

new jersey turfgrass association



# clippings

Green  
& World



Fall 2006 | VOL 64

## Rutgers Turfgrass Student Awards Banquet

*Inside this issue:*

- ❖ **Expo Registration**
- ❖ **IR-4 Ornamental Horticulture Program**
- ❖ **2006 Rutgers Award Banquet Pictorial Review**



# Storr Tractor Company

Distributor of Toro Commercial Turf Care Equipment



**TORO.**

**Count on it.**



3191 Route 22 • Somerville, New Jersey • 08876

[www.storrtractor.com](http://www.storrtractor.com) 908-722-9830

# President's Message

By Chris Carson, NJTA President



**Chris Carson**  
NJTA President

## On Giving Thanks

I write this with Thanksgiving approaching, and like most of you I will shortly be spending time with my family and appreciating what they mean to me. I'm looking forward to being with my two college kids and in finding out how they've been, and I won't forget to be thankful for my family, my friends and – yes – my job.

From NJTA's perspective, we have a lot to be thankful for as well. Our new partnership with the NJ Landscape Contractors Association promises to be a fruitful one; our lifelong affiliation with Rutgers and The Center for Turfgrass Science is superb – and getting better every year; your Board of Directors continues to work hard to make NJTA grow and thrive; and so many new initiatives are being worked on that we are energized by our future. As your president, I am delighted with the many people who've worked hard to ensure our success: to all of you I thank you from the bottom of my heart.

I hope you receive this message just before our annual Expo, because I would like you to do something important for NJTA in Atlantic City: Our trade show vendors have been loyal partners, and without their presence and support Expo – and NJTA – would not be the same. These wonderful people are trying to do business, of course, but they are also saying with their attendance that they support what we are and what we do. I would like every attendee to visit the trade show floor, to seek out our vendors, and to give them a personal thank you for their support. I will also be writing business for my club at Expo, and I encourage you to do the same. If our trade show partners receive personal thanks from attendees – and do some business as well – they will be more inclined to continue to support us in the future... so please, help NJTA with your presence on the trade show floor at Expo!

Some of these faithful supporters have taken the significant step of becoming sponsors of our Expo: to Course Contractors Inc., Grass Roots, Storr Tractor, Syngenta, and Tree Tech I thank you most sincerely. You truly rise above and beyond!

Like most of you, I look forward to Expo week with great anticipation. It is a great way to learn what's new in turf, but also to meet new friends and to greet old ones. I am thankful that Dr. Henry Indyk began this event 31 years ago, and I hope you share with me the strong desire to ensure Expo thrives... not just as a legacy to Henry but because it is an exciting, fun, and educational conference. I hope to see you there!

## Table of Contents Clippings

President's Message	3
Life's Journey	4
The IR-4 Ornamental Horticulture Program	5
Rich Buckley Receives Rutgers Alumni Achievement Award	7
17th Annual Rutgers Turfgrass Student Award Banquet	8
12th Annual Rutgers Turfgrass Research Golf Classic Notice	10
17th Annual Rutgers Turfgrass Student Awards Banquet Pictorial Review	12
2006 Expo Information & Registration Form	14
2006 Rutgers Scholarship & Award Recipients	16
County Extension Office Contact List	17
New Member Welcome	18
Clippings Ad Info.	19
NJTA Membership Application	19
NJTA Patron Listing	22
Calendar of Events	23

## Green World

Diseases of Turfgrass	21
-----------------------	----

Cover Photo Courtesy of Jerry Schoonmaker.



**New Jersey  
Turfgrass  
Association**

P.O. Box 340  
Milltown, NJ 08850-0340  
Phone: (215) 757-NJTA  
Fax: (215) 741-NJTA  
[www.njturfgrass.org](http://www.njturfgrass.org)

# Life's Journey

By Michelle Rickard, NJTA Executive Director

"Life is a journey," she said, with the clatter of dishes and silverware being cleared from the well-dressed tables. We sat in a quaint little café just down the street from Storr Tractor Company. The aroma of the food enveloped us almost as promptly as the maitre d', who greeted her with fondness and swiftly sat us next to a window. It was truly a glorious, autumn day. Indeed, the perfect day to spend discussing business, politics, *and life* with Mary Lou DesChamps.

When she accepted my invitation several weeks before, I was delighted that she would clear her busy schedule to have lunch with me. I told her I wanted to discuss business, but my motive for inviting her was equally personal, perhaps more so.

As we neared the end of our lunch, Mary Lou told me of a speech she had to present several years earlier. It was a speech which meant a lot to her, and she shared its theme with me that life is a journey. We talked about our careers; I was particularly interested in hers. Her career certainly wasn't an easy path and my suspicions were dead on...I have a lot to learn from Mary Lou. Inside that tiny, elegant package is a tower of strength and business savvy which continues to astound me.

It was during my ride home from our lunch that I began to really explore that simple phrase, "life is a journey." I repeated it in my head several times trying to absorb its depth. One may think it superficially refers to the everyday goings on in our lives...taking the kids to school, picking up the dry cleaning, or any other daily chore with which we inevitably fill our lives. But, the more I recited that phrase the more I began to think about how I started my journey with NJTA. Then my thoughts quickly turned to everyone who has helped me navigate through all the twists and turns of being NJTA's Executive Director.

Expo 2004 was my inauguration into the NJTA family. I'll never forget my first dinner when Dick Caton, my predecessor, toasted me with a sincere, "Welcome home!" And, to steal a bit from Chris' President's Message, I find it very apropos this Thanksgiving season to give thanks to those who have helped me over the last few years and to express my heartfelt appreciation for the allied associations which make up the foundation of the green industry in New Jersey.

*continued on page 22*



**Don't miss your opportunity to advertise in Clippings.  
Call (215) 757-NJTA (6582) to learn more.**

# TRUCKS! ANY JOB YOU DO, WE HAVE A TRUCK FOR YOU!

<b>2004 AND 2005 F-650 DUMP TRUCKS</b> 	<b>2004 AND 2005 F-350 DRW CREW CAB PICKUP</b> 	<b>2004 AND 2005 F450 DUMPING RACK BODY</b> 	<b>2004 AND 2005 STERLING ACTERRA M8500 DUMP</b> 
---	---	---	---

**MEADOWLAND FORD-STERLING TRUCKS**

**ALWAYS 250 NEW & USED TRUCKS IN STOCK!**  
Explorers • Excursions • Escapes • Windstars & much more!

## 201-617-0700

<http://www.meadowlandford.com> • email: [sales@meadowlandford.com](mailto:sales@meadowlandford.com)  
330 COUNTY AVENUE, AT SECAUCUS ROAD SECAUCUS NJ  
Opp. Motor Vehicle Inspection Station



## The IR-4 Ornamental Horticulture Program

By *Cristi L. Palmer, Ph.D.*  
 IR-4 Project Headquarters  
 Princeton, NJ

*Introduction by Dr. Karen Plumley, NJTA Vice President*

*As part of our ongoing series on "Getting to Know Rutgers," this month we turn our attention to The IR-4 Project based at Rutgers University. Most of us in the turfgrass industry have had little or no contact with IR-4 directly, but many of us have reaped the benefits of this program.*

*According to their website, the mission of the IR-4 Project is to provide safe and effective pest management solutions for specialty crop growers including sod farms and ornamentals. Registering a pesticide in the U.S. requires a large financial commitment by the manufacturer to generate the data necessary for registration. When compared to pesticide use on field crops like corn and soybeans, specialty crops may not present the same financial incentive for data development. The IR-4 Project is a federally sponsored program designed to assist growers by collecting the data necessary to register pest control products for use on specialty crops.*

*We have asked Dr. Cristi Palmer of The IR-4 Ornamental Horticulture program to tell us more about IR-4...*

The IR-4 Project works with growers, researchers, registrants and regulatory agencies to develop research data so that new products can be registered and new crops, diseases, insects and weeds can be added to existing product labels. The IR-4 program is the only government sponsored organization which has a mission to listen to and address growers' needs by collecting data which will lead to registered products

with state and federal agencies. The IR-4 Ornamental Horticulture Program, one of several programs under the IR-4 Project, develops information for non-edible specialty crops grown in greenhouses, nurseries, landscapes, Christmas tree farms, forestry production nurseries and sod farms.

*continued on page 11*

**Thank you to all of our advertisers.  
 Without your support this publication  
 would not be possible.**



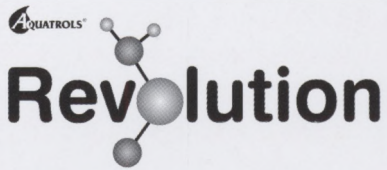
**Wilfred Mac Donald Inc**  
 Turf Equipment Specialists

**TEXTRON**  
 TURF CARE AND SPECIALTY PRODUCTS

19 Central Boulevard  
 South Hackensack, NJ 07606

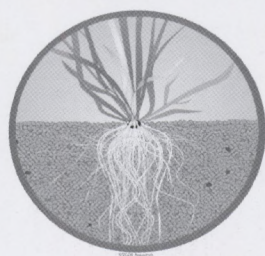
Sales: (888)-831-0891  
 Parts: (888)-831-0911  
 Service: (888)-831-0919

[www.wilfredmacdonald.com](http://www.wilfredmacdonald.com)



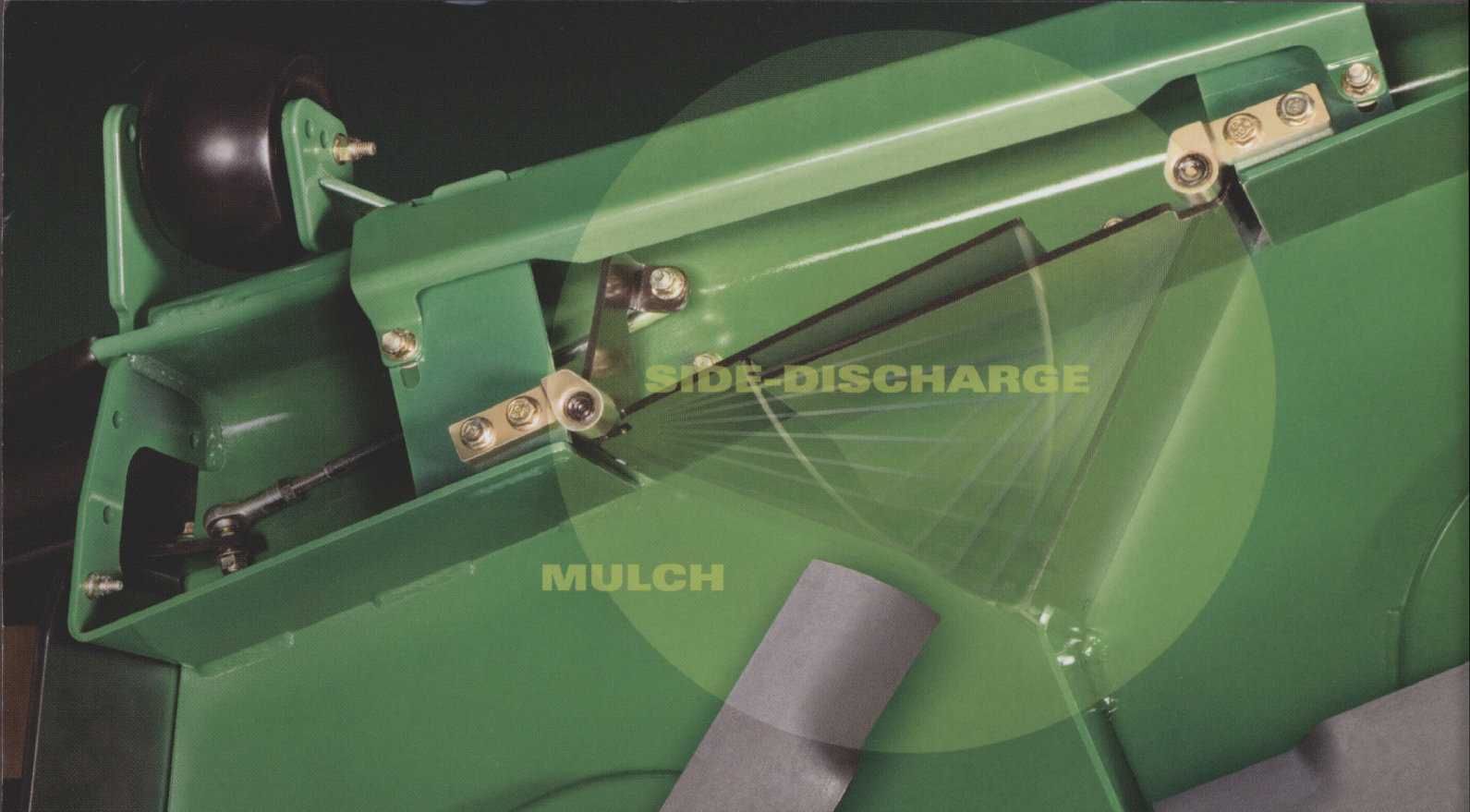
**Revolution**

There's no reason for you or your turf to stress over maintaining healthy, fast greens. Revolution® puts you in control of rootzone conditions. It ensures top performance and better plant health throughout the season, and increases turf survival under extremes.



Isn't it time you joined the Revolution?

**grass roots** (973) 361-5943  
 Distributing Aquarols products since 1978



**"In a matter of seconds,  
you can go from  
mulching to side-discharge.  
There's not another  
mower that can do that."**

**The New John Deere 7-Iron II™ Mulch-On-Demand Deck.**

"When we want to side-discharge, we can do it right from the seat," says Mike. "And we don't have to carry an extra piece of equipment." Just by engaging a lever from the operator's seat, the 7-Iron II mulch-on-demand deck goes from mulching to side-discharge in an instant.

Mike Dykstra, Dykstra Landscape Services Inc., Grand Haven, Michigan



**7IRONII™**

See more of what Mike Dykstra has to say at [www.mowpro.com](http://www.mowpro.com)



**JOHN DEERE**

## Rich Buckley Receives the Rutgers Turfgrass Alumni Association Achievement Award

By Sabrina Tirpak, Rutgers Plant Diagnostic Laboratory



If you are involved in the green industry in New Jersey, chances are you have been, or soon will be, in the audience during one or more of “Buckley’s” enthusiastic, diet-Coke induced high-energy lectures about dead plants and bugs! Perhaps you’ve even sent him some dying turf, or

maybe a dead tree or two. This year, Richard J. Buckley, was presented with the Rutgers Turfgrass Alumni Association Achievement Award. This honor was initiated in 1990 by the Association to recognize individuals who have made a significant contribution to the turfgrass industry in New Jersey and have provided outstanding service to the turfgrass program at Cook College. Mr. Buckley was presented with the award at the 17th Annual Graduation Ceremony for The Rutgers Professional Golf Turf Management School and Turfgrass Student Awards Banquet. The event was hosted by the Cook College Office of Continuing Professional Education and the Center for Turfgrass Science, on the evening of Saturday, November 4, 2006 on Cook Campus.

Mr. Buckley is coordinator of the Rutgers Plant and Soil Testing Services. He received his M.S. in turfgrass pathology, having studied insect resistance to endophytes under the guidance of Dr. Phil Halisky, from Rutgers University in 1991. He has a B.S. in entomology and plant pathology from the University of Delaware. He also has received special training in nematode

detection and identification from Clemson University. Mr. Buckley started working at the Rutgers Cooperative Extension Plant Diagnostic Laboratory and Nematode Detection Service as a program associate in 1991, and later went on to become laboratory coordinator in 1993. He has work experience in diagnostics, soil testing, and field research, and is currently responsible for sample diagnosis,

*continued on page 9*

PROVEN PERFORMANCE WITH

Adams Earth<sup>®</sup>  
Organic Soil Amendment

AND



Liquid  
Fertilizers

*some formulations include:*

- 0-0-25 w/Sulfur
- 12-3-12 50% SRN & Micros
- 18-3-6 50% SRN & Micros
- 20-0-0 50% SRN
- 20-3-3 20% SRN & Iron
- Sugar Cal 10%



**PLANT FOOD COMPANY, INC.**  
The Liquid Fertilizer Experts

38 Hightstown-Cranbury Station Rd. • Cranbury, NJ 08512  
Toll Free: (800) 562-1291 • Fax: (609) 443-8038  
E-Mail: [pfc@plantfoodco.com](mailto:pfc@plantfoodco.com)  
Visit our Website @ [www.plantfoodco.com](http://www.plantfoodco.com)

# 17th Annual Turfgrass Student Awards Banquet... A Night to Remember!

By Shaun Barry, NJTA Board Member

On November 4, 2006 over 200 very enthusiastic people gathered on the Cook College campus. They were there to be part of the graduation ceremony for the 2006 Rutgers Professional Golf Turf Management School. This took place during the 17th Annual Turfgrass Student Awards Banquet. Joining the graduates and scholarship winners were their parents, family members, friends, employers, industry representatives and many of their dedicated instructors.

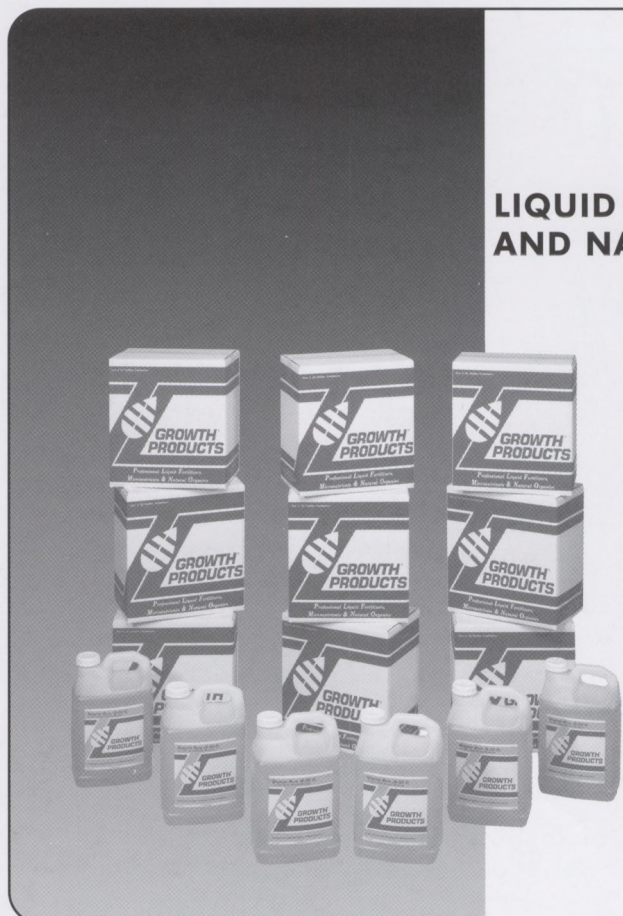
Receiving their certificates from Dr. Bruce Clarke and Marie Pompei were the 25 students from the Fall Class of 2005. Their class president, Paul Bradley, came to Rutgers from England but this night he flew up from Florida to complete another part of his journey. Aragon Schafer is the class president from the Winter Class of 2006 and his class was comprised of 43 students. This group of students came from all over North America and Europe. The diversity of this group was evident by students like Danielle Skoba and Timothy Sibicky. I chose Danielle because she was

skydiving the morning of the banquet, and Tim because he has interned at The Old Course in Scotland under the watchful eye of Gordon Moir. Knowing that there are many other stories like these two it is easy to see that many of the leaders in our industry will come from this program.

Before the scholarships were given out Ned Lipman, Jr. and Thom Ritchie surprised Rich Buckley with the Alumni Association Achievement Award. Rich had no idea he was to receive this award and he was almost speechless. He, however, truly deserves the award and it was great to see him honored.

In total, there were 65 scholarships given out. 17 students received their awards in the name of Peter S. Loft and 14 in the name of Ralph Geiger. The Duke Polidor Memorial Scholarship, The New Jersey Turfgrass Foundation and The Ralph Engel Fund awarded 6, 5 & 4 scholarships

*continued on page 17*



Available Through:

**grass roots**  
(973) 252-6634

## LIQUID FERTILIZERS, MICRONUTRIENTS, AND NATURAL ORGANICS

### Fall Preparedness

- **Pro-Balance (15-2-15)** focuses on increasing potassium to improve cold tolerance, strengthen roots and build up carbohydrates.
- **Micrel Total (6-0-0)** with 8 fully chelated minors cover all of your micronutrient bases.
- **Control-De Thatcher** treatments helps to keep thatch at bay.
- **Essential® Plus** adds your fundamentals, including Organic L-Amino Acids, Humic Acid, Kelp, and Biostimulants to improve root structure prior to winter stress.

(800) 648-7626  
www.GrowthProducts.com  
*Celebrating Over 20 Years In The Green Industry!*



# Rutgers Alumni Achievement Award (cont.)

soil analysis for nematodes, and the day-to-day operation of the PDL&NDS. In the past fifteen years, the laboratory has processed nearly 30,000 turfgrass, ornamental plant, and insect samples submitted for diagnosis or identification. Almost half of all samples have been turfgrass, and thanks to Mr. Buckley's national reputation for turf diagnostics, the laboratory receives samples from across the country, with as many as 500 turfgrass samples a year from out-of-state.

In addition to his responsibilities as laboratory coordinator, Mr. Buckley is also an instructor in the Rutgers Professional Golf Turf Management School. He started teaching in the program in 1992 and currently teaches four different courses in diseases and insect pests of turfgrass and ornamental plants. He also is a frequent lecturer and invited speaker on disease and insect pest problems in turfgrass and ornamentals, plant problem solving, and pest management techniques, teaching as many as 150 lectures a year throughout the northeast and mid-Atlantic region. Mr. Buckley is a regular contributor of articles to

newsletters, including the RCE Plant and Pest Advisory and Cornell University's ShortCUTT, and is co-author of many RCE turfgrass and ornamental plant fact-sheets.

Mr. Buckley's enthusiasm for plant diagnostics and his valuable service to Rutgers University, Rutgers Cooperative Extension, his colleagues, stakeholders, and students make him truly deserving of this year's Rutgers Turfgrass Alumni Association Achievement Award.

Congratulations Rich!



**New Jersey  
Turfgrass  
Association**



## The Rutgers Plant Diagnostic Lab

The Plant Diagnostic Laboratory provides accurate and timely diagnoses of plant problems.

Below is a sample of services performed:

- ▶ Disease and Insect Pest Diagnosis
- ▶ Plant and Weed Identification
- ▶ Insect Identification
- ▶ Fungus and Mold Identification
- ▶ Nematode Assays
- ▶ Screening for Neotyphodium Endophytes
- ▶ Fungicide Resistance Screening
- ▶ Other Services Available by Contract

For more information please call us at 732/932-9140 or visit the web for sample submission instructions and forms at:

[www.rcrc.rutgers.edu/plantdiagnosticlab](http://www.rcrc.rutgers.edu/plantdiagnosticlab).



## The Rutgers Soil Testing Lab

The Rutgers Soil Testing Laboratory performs chemical and mechanical analyses of soils.

The following services are routinely performed:

### Landscape

- Level 1** Fertility Test: Nutrients, pH, recommendations
- Level 2** Problem Solver {soil/plant suitability test}
- Level 3** Topsoil Evaluation

### Greenhouse

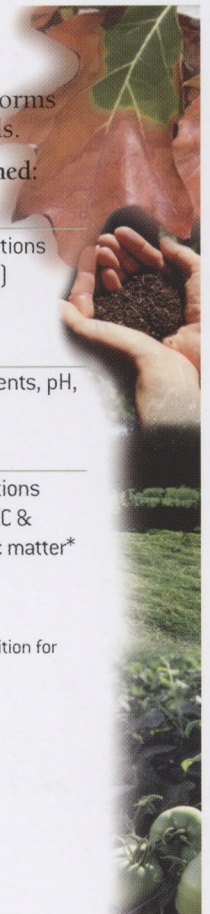
**Saturated (Organic) Media Extract Analysis:** Nutrients, pH, electrical conductivity, inorganic nitrogen

### Sport Turf

- Level 1** Fertility Test: Nutrients, pH, recommendations
- Level 2** Complete Test: Nutrients, pH, estimated CEC & cation saturation, soluble salt level, organic matter\* content, soil textural class
- Level 3** Sand Root Zone Test

\*Organic matter content would be determined by loss-on-ignition for golf course greens, as described by USGA guidelines.

For more information please call us at 732/932-9295, or visit us on the web at: [www.rcrc.rutgers.edu/soiltestinglab](http://www.rcrc.rutgers.edu/soiltestinglab).



[www.rcrc.rutgers.edu/services](http://www.rcrc.rutgers.edu/services)

Come Celebrate with us!  
The New Jersey Turfgrass Foundation Presents...



The 12th Annual Rutgers Turfgrass Research Golf Classic

Monday, May 7, 2007



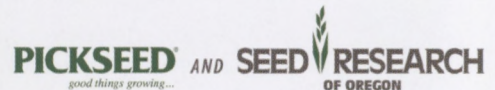
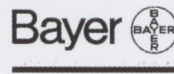
FIDDLER'S ELBOW COUNTRY CLUB

811 Rattlesnake Bridge Road  
Bedminster Township, NJ 07921

For sponsorship and registration information, please visit:

[www.njturfgrass.org](http://www.njturfgrass.org)

2006 Premier  
Sponsors



# The IR-4 Ornamental Horticulture Program (Cont.)

The IR-4 Ornamental Horticulture Program is supported by two major funding sources: the USDA Agricultural Research Service (ARS) and the USDA Cooperative State Research, Education, and Extension Service (CSREES). The ARS research staff conducts research trials across all pest disciplines and is critical in the effort to provide pest solutions to the green industry. The funding provided by CSREES typically supports research through the state university and State Experiment Station systems.

The first step for the IR-4 Ornamental Horticulture Program to select research projects is to determine the most pressing disease, insect, and weed problems facing growers and landscape professionals. IR-4 solicits input on these issues several ways. Growers, researchers, and extension personnel can fill out project request forms and submit them to either their regional coordinator or State Liaison Representative, or to the ornamental horticulture program manager via a web-based form. Growers, researchers, and extension personnel can also complete an annual survey to determine which diseases, insects, and

weeds are the most problematic, meaning they may not be easily or economically managed with current products.

During 2006 over 337 growers, landscape care professionals, researchers & extension agents, and allied-industry professionals participated in the survey. The top 5 diseases mentioned were Phytophthora, Botrytis, powdery mildew, Rhizoctonia, and downy mildew. The top 5 insects listed were thrips, whiteflies, scales, mealybugs, and spider mites. The top 5 weed problems were spurge, bittercress, nutsedge, Oxalis, and Eclipta.

At the annual workshop, attendees discuss the major pest issues using the survey results and submitted projects requests and then assign research priorities for the IR-4 Program during the following year. Attendees at the 2006 IR-4 Ornamental Horticulture Program Workshop selected several high priority projects for research in 2007. The two entomological projects were thrips and anything coleopteran (borers, beetles, white grubs and root weevils), a continuation of the 2006 research priorities. For plant

*continued on page 22*

## PLANT FOOD COMPANY, INC. The Liquid Fertilizer Experts

We specialize in liquid fertilizers and sell many other types of fertilizers, biostimulants, lime and protection products. Everything in the green industry, including trees and shrubs, turf and flowers, grow stronger and more beautiful with our products. Contact us to learn more and request your free catalog.

800.562.1291  
609.443.8038 (fax)  
pfc@plantfoodco.com  
www.plantfoodco.com



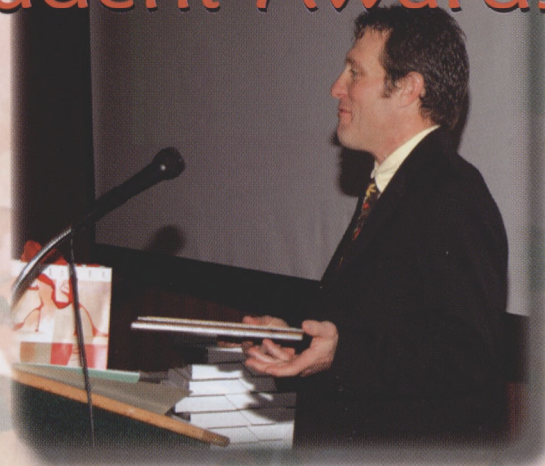
*Grow with us as part of our expanding family of customers.*

# 17th Annual

# Rutgers Turfgrass Student Awards



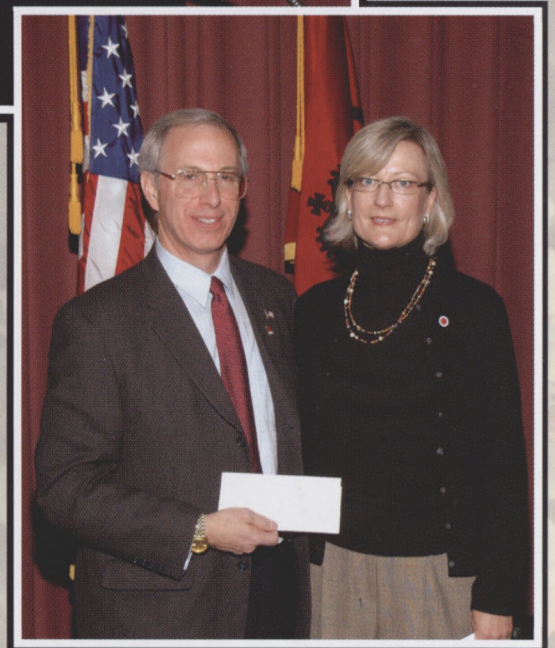
Ned Lipman (left) and NJTA Board Member, Thom Ritchie (right) present Rich Buckley with the Rutgers Turfgrass Alumni Achievement Award.



Rich Buckley is surprised to learn he is the recipient of the Rutgers Turfgrass Alumni Achievement Award.



Dr. Bruce Clarke presents Danielle Skoba with the Paul DesChamps Memorial Scholarship.



NJ Turfgrass Foundation President, Marie Pompei presents Dr. Bruce Clarke with a check for \$64,000 to help support the Center for Turfgrass Science.



**New Jersey  
Turfgrass  
Association**

*All Photos (Including Background) Courtesy of Jerry Schoonmaker.*



Shaun Barry, NJTA Board Member prepares to present one of the many scholarships offered on this special night.



Dr. Rich Hurley and Ned Lipman present Sean Hoolehan, CGCS, with the award for Professional Excellence.



Marie Pompei, Foundation President, presents the Foundation Scholarships.



Left to Right: Mark Kuhns, CGCS, Sean Hoolehan, CGCS, Dr. Bruce Clarke, and Ken Kubik.



Attendees include graduates, families, vendors, NJTA Members and award recipients. It was truly a night to remember!



Brad Park presents student and NJTA Member, Daniel Purner with the SFMANJ Scholarship.

# Banquet 2006

The 31st Annual

# New Jersey Turf and Landscape Conference & Expo

**December 5-7, 2006** • Trump Taj Mahal • Atlantic City, New Jersey



**A Conference Dedicated to the Green Industry Professional!**



**Register Online Today!**

*Proudly Presented by:*



*In Cooperation With:*

**GCSANJ • SFMANJ • Rutgers, The State University of New Jersey**  
**[www.njturfgrass.org](http://www.njturfgrass.org)**

# Official Registration Form

# TURF & LANDSCAPE CONFERENCE and EXPO 2006

DECEMBER 5, 6 & 7, 2006 • TRUMP TAJ MAHAL CASINO & RESORT • ATLANTIC CITY, NJ

The New Jersey Turfgrass Association and  
the New Jersey Landscape Contractors Association  
proudly present the  
New Jersey Turf & Landscape Conference and Expo 2006  
In cooperation with: GCSANJ, SFMANJ, and  
Rutgers University/Cook College

Name \_\_\_\_\_  
 Company Name \_\_\_\_\_  
 Title \_\_\_\_\_  
 Mailing Address \_\_\_\_\_  
 \_\_\_\_\_  
 City \_\_\_\_\_ State \_\_\_\_\_ Zip Code \_\_\_\_\_  
 Tel # \_\_\_\_\_ Fax # \_\_\_\_\_  
 E-mail \_\_\_\_\_  
 Spouse Name \_\_\_\_\_  
 (If ordering badge for \$35.00 - fee must accompany registration.)

If necessary, duplicate entire form and list additional registrants on separate form. **Please provide complete information for each registrant.**

**HOTEL ROOM RESERVATION INFORMATION:**  
 ALL REQUESTS FOR LODGING DURING EXPO 2006 MUST BE HANDLED DIRECTLY THROUGH TRUMP TAJ MAHAL CASINO-RESORT. Please call (800) 825-8888 and provide Registration Code: ANJTA06.



Online Registration available at [www.njturfgrass.org](http://www.njturfgrass.org)

Please make check payable and send with application to:  
 New Jersey Turfgrass Association  
 P.O. Box 340, Milltown, NJ 08850-0340  
 Phone: (215) 757-NJTA (6582) Fax: (215) 741-NJTA (6582)

All confirmations will be sent via e-mail unless otherwise requested.

TAKE ADVANTAGE OF EARLY REGISTRATION:  
 (Cut-off Date: November 10, 2006)

NJTA MEMBER:  YES  NO

Late Registration will be \$10.00 more per category	NJTA Member	Non Member	Total
1-DAY EDUCATION SESSIONS & TRADE SHOW <input type="checkbox"/> Tuesday <input type="checkbox"/> Wednesday <input type="checkbox"/> Thursday (Please Specify 1 Day)	\$85	\$95	\$ _____
2-DAY EDUCATION SESSIONS & TRADE SHOW <input type="checkbox"/> Tuesday <input type="checkbox"/> Wednesday <input type="checkbox"/> Thursday (Please Specify 2 Days)	\$135	\$155	\$ _____
3-DAY EDUCATION SESSIONS & TRADE SHOW (Tuesday, Wednesday, and Thursday)	\$175	\$205	\$ _____
SPOUSE BADGE (Entire Event)	\$35	\$35	\$ _____
TRADE SHOW ONLY (Price Per Day)	No. _____ @	\$35	\$ _____
INDIVIDUAL MEMBERSHIP (List Name Below)	\$60	\$60	\$ _____
G.C., LAWN & LANDSCAPE MEMBERSHIP (List 3 Names Below)	\$150	\$150	\$ _____
GREEN INDUSTRY BUSINESS MEMBERSHIP (List 4 Names Below)	\$200	\$200	\$ _____
BALANCE DUE (For All Registrations)			\$ _____

NJTA MEMBERSHIP:  RENEWAL  NEW MEMBER

(Good from January 1, 2007 - December 31, 2007)

1. \_\_\_\_\_ 3. \_\_\_\_\_  
 2. \_\_\_\_\_ 4. \_\_\_\_\_

Check Enclosed: \_\_\_\_\_ \$ \_\_\_\_\_

Credit Card Payment:  Visa  MasterCard  American Express

Card No. \_\_\_\_\_ Exp. Date \_\_\_\_\_

3-Digit Security Code (Located on back of credit card) \_\_\_\_\_  
 (Payment cannot be processed without this number.)

Cardholder's Name \_\_\_\_\_

Signature \_\_\_\_\_



**TURFGRASS INTEREST**

Check one category which best describes your profession:

- Golf Course
- Lawn Care Applicator
- Landscape/Lawn Maintenance
- Cemetery
- Irrigation
- Sod Producer
- Parks & Recreation
- Schools & Athletic Fields
- Manufacturer/Supplier
- Professional (Architect, University)
- Student
- Other \_\_\_\_\_

FINAL DEADLINE DATE FOR RECEIPT OF APPLICATION IS NOVEMBER 24, 2006. ALL OTHERS MUST REGISTER ON-SITE.

DO NOT WRITE BELOW THIS LINE

Date Received \_\_\_\_\_ Date Deposited \_\_\_\_\_ No. Trade Show Only \_\_\_\_\_  
 Day(s) Selected: \_\_\_\_\_ Purchase Order Received \_\_\_\_\_  
 No. of Registrants \_\_\_\_\_ Payment Enclosed \_\_\_\_\_ \$ \_\_\_\_\_

# 2006 Rutgers Scholarship and Award Recipients

## New Jersey Turfgrass Foundation Scholarships

HF Timothy Sibicky  
NJTF Justin Hughes  
NJTF Christopher Skvir  
NC Alexander Tekulsky  
LV Ted Pickering

## Peter S. Loft Memorial Scholarship

Sara Baxer	Kyle Mead
Matthew Brennan	Emily Merewitz
Ryan Cecil	Zane Raudenbush
Laura Cortese	David Rotter
JoAnne Crouch	Kate Stokes
Daniel Elmowitz	Monica Torres
Kevin Kinney	Jonathan Wagner
Matthew Koch	Yan Xu
Benjamin McGraw	

## Rutgers Turfgrass Alumni Assoc. Scholarship

Peter Stone

## Bayer Scholarship

Daniel Purner

## Ralph Engel Scholarship

Kevin Abila	Tim Kassler
Jason Busch	Artur Skarzynski

## Ralph Geiger Scholarship

Jonathan Bokmeyer	Patrick McCullough
James Devaney	Mary Provance-Bowley
Rolland Gesimondo	Zane Raudenbush
Joshua Honig	William Reardon
John Inguagiato	Robert Shortell
Eric Koch	Danielle Skoba
Stephen McCann	Christopher Skvir

## Cleary Chemical Scholarship

Brian Holz

## Dr. Paul Sartoretto Memorial Scholarship

Steven Tomlinson

## Paul DesChamps Memorial Scholarship

Corey Heasley  
Danielle Skoba

## HEALTH INSURANCE FOR YOUR TURF.



It's all about the kind of coverage you have. And Hunter irrigation products deliver performance that ensures your turf is lush and healthy over every inch. As a sports turf manager, your work is on display for the world to see. That's why I use Hunter.

**Hunter**<sup>®</sup>  
The Irrigation Innovators

Ask for your Free Hunter Products Catalog 1-800-733-2823 [www.HunterIndustries.com](http://www.HunterIndustries.com)



**Rutgers Student Award Banquet - continued from page 8.**

respectively. 12 other companies and associations completed this generous evening of giving.

The final major award of the evening went to Sean Hoolehan, CGCS, graduate from the Class of 1981. He is a superintendent at Wildhorse Resort in Oregon and is also the president of the GCSAA. His keynote speech was quite inspiring, and I am sure everyone took some important message away from his presentation. We also had surprise visits from Dr. Richard Caton and Mark Kuhns, CGCS. Dick was the past executive director of the NJTA and Mark is the superintendent at Baltusrol CC. He is a graduate from Penn State but this evening he was happy to be at Rutgers with Sean and to catch some Scarlet Fever from Ken Kubik.

It was a wonderful night of celebration for the students and their families, but it also showed them that with hard work anything is possible. They saw proof of that in Sean Hoolehan, CGCS and they know that they can have a great future doing what they love. ■

**Thank you to all of our advertisers.  
Without your support this publication  
would not be possible.**

## Extension Offices

RCE of Atlantic County	(609) 625-0056
RCE of Bergen County	(201) 336-6780
RCE of Burlington County	(609) 265-2900
RCE of Camden County	(856) 566-2900
RCE of Cape May County	(609) 465-5115
RCE of Cumberland County	(856) 451-2800
RCE of Essex County	(973) 228-2210
RCE of Gloucester County	(856) 307-6450
RCE of Hunterdon County	(908) 788-1339
RCE of Mercer County	(609) 989-6830
RCE of Middlesex County	(732) 398-5262
RCE of Monmouth County	(732) 431-7261
RCE of Morris County	(973) 285-8307
RCE of Ocean County	(732) 349-1246
RCE of Passaic County	(973) 305-5742
RCE of Salem County	(856) 769-0090
RCE of Somerset County	(908) 526-6293
RCE of Sussex County	(973) 948-3040
RCE of Union County	(908) 654-9854
RCE of Warren County	(908) 475-6505

# 3336™

**BEEN THERE, DONE THAT...  
and STILL GOING STRONG**

Continuous field testing shows that 3336 remains strong today and will continue to be effective well into the future. 3336 fungicide provides broad spectrum systemic control of major turf diseases year after year, time after time. It has excellent handling and delivery characteristics that insure total release in your application equipment.

Formulated three ways for your convenience:

- 3336 F, a flowable;
- 3336 WP, a wettable powder in water soluble bags; and
- 3336 G and GC, granulars

3336 lets you do what's needed to get the job done.



[www.clearychemical.com](http://www.clearychemical.com)  
178 Ridge Road, Dayton, NJ 800-524-1662, 732-274-0894 fax  
The Cleary logo and 3336 are trademarks of Cleary Chemical Corporation



**The "Green Industry" Supplier**  
SUPERIOR PRODUCTS FOR THE  
TURF & HORTICULTURAL PROFESSIONAL

*Grigg Brothers*

*EarthWorks*

*TriCure*

*Lebanon Fertilizers*

*Lido Chem*

*Plant Health Care*

*Grass Seed*

**Randy Rider**  
302-242-6848

**Bruce Cadenelli**  
732-245-2599

**Jeff Borajkiewicz**  
609-532-4837

[www.fisherandson.com](http://www.fisherandson.com)

# Reed & Perrine

Fertilizers • Grass Seed • Control Products **SALES, INC.**  
MAIN STREET • TENNENT NJ 07763

*Cleary 3336F • Cleary 3336G Granular • Spectro 90 • Defend • Protect*

*• Tank Cleaner • Drift Proof II • Cleary 3336 Greens Grade • Spotrete •*

*Liquid Lime • Cleary 3336F • Cleary 3336G Granular • Spectro 90 • Defend • Protect*

*Cleary 3336F • Cleary 3336G Granular • Spectro 90 • Defend • Protect*

*• Tank Cleaner • Drift Proof II • Cleary 3336 Greens Grade • Spotrete •*

*Liquid Lime • Cleary 3336F • Cleary 3336G Granular • Spectro 90 • Defend • Protect*

*Cleary 3336F • Cleary 3336G Granular • Spectro 90 • Defend • Protect*

*• Tank Cleaner • Drift Proof II • Cleary 3336 Greens Grade • Spotrete •*

**CLEARY**

**800-222-1065 ext. 5**

**Chris Zellej • Chuck Reynolds • Keith Haines • Greg Mendina**

# **Come Grow With Us...**

*Kevin Collins – Aquatrols*

*Kathy Conard – Aquatrols*

*Maria Donapel – Aquatrols*

*Scott Stetser – Atlantic Irrigation Specialties*

*Mark Kuhns – Baltusrol Golf Club*

*Scott Houston – BASF Corp.*

*Artur Skarzynski – Bedens Brook Club*

*Rick Baum – Central Irrigation Supply*

*Anthony Luciano – Central Irrigation Supply*

*Larry Oliva – Central Irrigation Supply*

*Peter Candelora – Cold Spring Country Club*

*Felix Ganz – Couch Braunsdorf Insurance*

*Jake Schlenker – Couch Braunsdorf Insurance*

*Dave Staggard – Couch Braunsdorf Insurance*

*Brett Garrard – Dow AgroSciences*

*Daniel J. Tedesco, Jr. – Duke's Lawn Service, Inc.*

*Daniel J. Tedesco, Sr. – Duke's Lawn Service, Inc.*

*Theresa A. Tedesco – Duke's Lawn Service, Inc.*

*Dave Kefner – F.M. Brown's Sons, Inc.*

*Joe Obara – F.M. Brown's Sons, Inc.*

*Pete Pyett – Forsgate Country Club*

*Jim Clinton – Goose Creek Golf Course*

*Joe Kennedy – Grass Roots, Inc.*

*Sean Remington – Green Valley Country Club*

*Christopher Brown – Hillsdale Landscaping*

*Richard Henderson – Lawn Growers of America*

*Ken Conboy – Ledden Palimeno (ProGreen)*

*Bret Brennan – McDonald & Sons, Inc.*

*Andrew Green – McDonald & Sons, Inc.*

*Mike Goff – Northern Nurseries, Inc.*

*Paul Richards – Northern Nurseries, Inc.*

*Kim Zajack – Ocean County Vocational Tech. School*

*Paul Parascondolo – Old Tappan Golf Course*

*Blair Bakker – Rabbit Hill Farms*

*Robert Reed – Rabbit Hill Farms*

*Joe Brenner – Rock Spring Club*

*Nick Kelly – Rock Spring Club*

*Ken Keseday – Rock Spring Club*

*Teresa Hancock – Shearon Golf*

*Chip Kern – Shearon Golf*

*Dennis Metz – Shearon Golf*

*Darrell Marcinek – Somerset Cty. Park Commission*

*Anthony Giacona – South Brunswick B.O.E.*

*Michael Griffiths – Sportsturf, LLC*

*Warren Savini – SynaTek*

*Michael Dougherty – Township of Wayne*

*Lee Bogart – Twin Rivers Community Trust*

*Anthony Tedesco – Twin Rivers Community Trust*

*Bill Becker – United Rentals*

*Rocco Conforti – United Rentals*

*Scott Dille – United Rentals*

*Jason Barich – USGA*

## **Welcome New Members!**

Photo Courtesy of Jerry Schoonmaker



2007 AD CAMPAIGN

Clippings & Green World is NJTA's quarterly newsletter publication. It is sent out each Winter, Spring, Summer and Fall.

Through the years, we have worked to increase the size, scope, and usefulness of this periodical.

Our present circulation is approximately 800 per issue.

*Please contact NJTA at (215) 757-6582 for additional information and pricing.*

**Membership Application**

Name: \_\_\_\_\_

Business: \_\_\_\_\_

Address: \_\_\_\_\_  
\_\_\_\_\_

City: \_\_\_\_\_

State: \_\_\_\_\_ Zip: \_\_\_\_\_

Phone: \_\_\_\_\_ Fax: \_\_\_\_\_

Email: \_\_\_\_\_

Check one category which best describes your profession:

- Golf Course
- Lawn Care Applicator
- Landscape/Lawn Maintenance
- Cemetery
- Irrigation
- Sod Producer
- Parks & Recreation
- Schools & Athletic Fields
- Manufacturer/Supplier
- Professional (Architect, University)
- Student
- Other \_\_\_\_\_

Green Industry Business Partners  
Manufacturers & Suppliers\*  
\$200.00 (4 members)

1. \_\_\_\_\_
2. \_\_\_\_\_
3. \_\_\_\_\_
4. \_\_\_\_\_

Golf Course, Lawn Care &  
Landscape Industry Partner\*  
\$150.00 (3 members)

1. \_\_\_\_\_
2. \_\_\_\_\_
3. \_\_\_\_\_

Individual Member  
\$60.00 (1 member)

1. \_\_\_\_\_

Student Member  
\$20.00 (1 member)

1. \_\_\_\_\_

\*On a separate sheet of paper, please provide a mailing address for each member if it differs from main contact.

NOTE: Please make check payable to NJTA or provide credit card information.  VISA  MasterCard  American Express  
Card # \_\_\_\_\_ Exp. Date \_\_\_\_\_

Cardholder's Name \_\_\_\_\_ Signature \_\_\_\_\_

Please check this box and write the amount of money in the space provided if you wish to make a contribution to the  
New Jersey Turfgrass Foundation \$ \_\_\_\_\_

MAIL TO: New Jersey Turfgrass Association • P.O. Box 340 • Milltown, NJ 08850-0340  
Phone: (215) 757-NJTA Fax: (215) 741-NJTA Or Join Online at [www.njturfgrass.org](http://www.njturfgrass.org)





# Green World

## ► Diseases of Turfgrass

Applied Turfgrass Research from Rutgers, the State University, and the New Jersey Turfgrass Association

### **Editor's Note:**

Each year, NJTA and the New Jersey Turfgrass Foundation work to raise funds for Rutgers University. These funds are used to provide scholarships for students interested in pursuing careers within the green industry and to help fund the many research projects that are conducted at Rutgers.

### **New Strobilurin Fungicide Approved by EPA**

The EPA has just approved Disarm 480SC, a new strobilurin (QoI) fungicide for use on turf. The active ingredient in Disarm is fluoxastrobin. Like azoxystrobin (Heritage), pyraclostrobin (Insignia) and trifloxystrobin (Compass), fluoxastrobin is very effective against a broad range of diseases including anthracnose, brown patch, gray leaf spot, pythium blight and summer patch.

### **PCNB Reregistration in Doubt**

The EPA has recommended that turf uses of PCNB be considered ineligible for reregistration. Interested parties had until October 2, 2006 to submit comments in support of retaining PCNB for use on turfgrasses. If the proposed ban is upheld, then PCNB could no longer be sold for the control of snow mold diseases on golf courses in the United States. The final decision from the EPA is expected later this year.

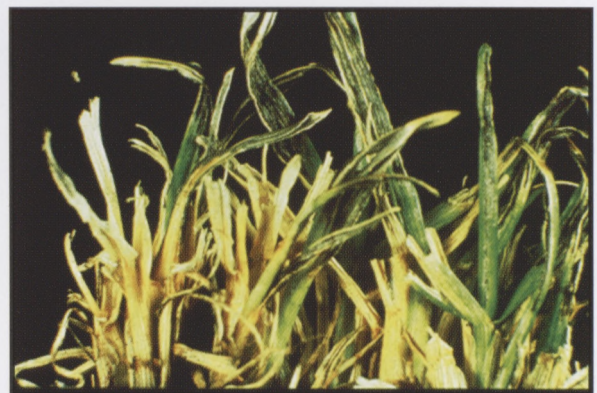
### **Pink Snow Mold**



A picture of pink and gray snow mold on an annual bluegrass and bentgrass green.

This disease, caused by the fungus *Microdochium nivale* (*Fusarium nivale*), will develop soon on golf and landscape turf. To prevent pink snow mold from developing on susceptible turf this fall, avoid excessive nitrogen applications, continue mowing turf until dormancy, and apply Armada, Banner, Chipco 26GT, chlorothalonil, Compass, ConSyst, Eagle, Headway, Heritage, Insignia, Intrata, Medallion, PCNB, Spectro, Tartan, thiophanate-methyl, or vinclozolin. For best results, apply any of these fungicides now and then repeat in late-January if the snow cover recedes. Do not, however, reapply PCNB after January 15 due to the possibility of phytotoxicity during warm weather next spring.

### **Stripe Smut**



Shredded leaf blades of Kentucky Bluegrass infested with *ustilago striiformis*, the causal agent of Stripe Smut.

Stripe Smut, is apparent on susceptible Kentucky bluegrass varieties at this time. This disease is caused by the fungus *Ustilago striiformis*. Symptoms appear as long black streaks (striations) between the veins of infected blades. These areas eventually rupture releasing abundant black smut spores. One well-timed application of an appropriate fungicide now will provide excellent control and is, therefore, far superior to multiple applications in the spring (mid-May). For best results, apply Armada, Banner,

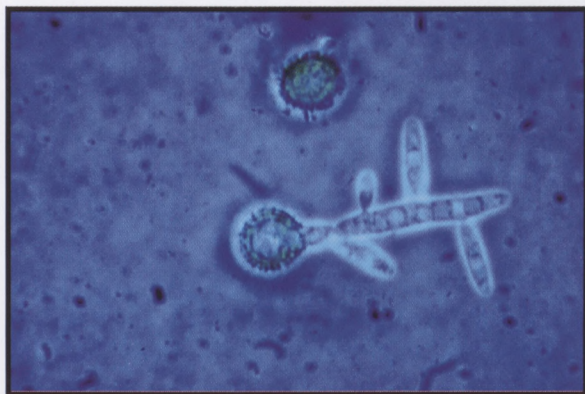
► by Bruce B. Clarke, Ph.D., Turfgrass Pathology

# Green World



Applied Turfgrass Research from Rutgers, the State University, and the New Jersey Turfgrass Association

Bayleton, Eagle, Rubigan, Tartan, or thiophanate-methyl now per manufacturer's recommendations.



Germinating teliospores of the Stripe Smut pathogen.

### Take-all patch

This disease, caused by the root and crown infecting fungus, *Gaeumannomyces graminis* var. *avenae*, has been reported on several bentgrass greens and fairways in the tri-state region. Although this disease is most prevalent from April through June, late-summer and fall outbreaks are not uncommon. Infection takes place during cool, wet weather and symptoms are most striking after stress. Infected grass first appears bronze to reddish-brown in color and then fades to a dull brown. Patches are usually circular or ring-shaped and range in size from several inches to two feet or more in diameter. The centers of affected turf are frequently colonized by bluegrass (*Poa* spp.), fescue (*Festuca* spp.), or weed species. Upon close examination, decaying roots and leaf sheaths appear black and dark strands of mycelium often develop parallel to the root axes. The disease is enhanced by poorly drained, light-textured, and high pH soils.

Although take-all is difficult to control, best results have been achieved through the use of acidifying fertilizers (e.g., ammonium sulfate) during cool weather and preventive applications of Banner, Bayleton, Headway, Heritage,

Insignia, or Rubigan in October and November. If the disease has been particularly severe, fungicides should be reapplied twice next spring at 21 to 28-day intervals beginning in early April. Chemicals should be applied in 4 gal water/1000 sq ft or lightly irrigated into the root zone (1/8 to 1/4" of water) for maximum effectiveness. Whenever practical, overseed infested areas with less susceptible grasses such as fine fescue, Kentucky bluegrass, or perennial ryegrass to mask symptom expression. Maintain soil pH at approximately 6.0 since the disease is enhanced in alkaline soils. Manganese, applied as a foliar spray (@2 lb Mn/A) containing manganese sulfate or another water soluble source, can reduce the severity of take-all patch on sites deficient in this nutrient.



A close up of take all patch on a bentgrass fairway with a sample removed for laboratory analysis.

### Turf Expo

This year's Turf Expo will be held at the Trump Taj Mahal Casino/Resort on December 5-7, 2006. This is an excellent opportunity to receive the latest turf management information from nationally renowned speakers. For additional information, please contact Michelle Rickard at (215) 757-6582 or [njtadirector@yahoo.com](mailto:njtadirector@yahoo.com), or Marlene Karasik at (732) 932-9400 ext. 339 or [mkarasik@aesop.rutgers.edu](mailto:mkarasik@aesop.rutgers.edu). ■

### *Life's Journey - continued from page 4*

From my initial interview for this position to today, I have made a great circle of friends, an eclectic family of sorts. My friends at NJTA and the other associations have become my mentors, my sounding board, and in many ways, my inspiration.

So, this holiday season, I give thanks to those who have helped me along this stretch of life's journey and to those who have grown with NJTA. It has been a truly enlightening experience to work with such talented individuals, and to witness the enthusiasm of this great industry. ■

---

### *IR-4 - continued from page 11*

pathology, the ongoing Phytophthora and Pythium efficacy projects were continued. Workshop attendees committed to two new projects dealing with sedge efficacy and crop safety of products for sedge control along with finishing the 2006 project on crop safety of Sedgehammer, Sulfentrazone, SureGuard, and V-10142 on select ornamental horticulture plants.

For more information about the IR-4 Ornamental Horticulture Program, contact Cristi Palmer at 732-932-9575 extension 4629 or visit the website at [www.ir4.rutgers.edu](http://www.ir4.rutgers.edu). A Regional Coordinator can also help those who wish to learn more about studies in a particular region. Regional Coordinators can be contacted at: Northeast Region – Edith Lurvey, 315-787-2308, [ell10@cornell.edu](mailto:ell10@cornell.edu); North Central Region – Satoru Miyazaki, 517-336-4611, [ncrir4@msu.edu](mailto:ncrir4@msu.edu); Southern Region – Charles Meister, 352-392-2399, [cmeister@ifas.ufl.edu](mailto:cmeister@ifas.ufl.edu); Western Region – Rebecca Sisco, 530-752-7634, [rsisco@ucdavis.edu](mailto:rsisco@ucdavis.edu); and USDA-ARS Office of Minor Use Pesticides– Paul Schwartz, 301-504-8256, [schwartz@ba.ars.usda.gov](mailto:schwartz@ba.ars.usda.gov). ■

---

### *2006 Scholarships - continued from page 16*

#### **NJ Landscape Contractors Assoc. Scholarship**

Daniel Purner  
William Reardon  
Robert Shortell

#### **Duke Polidor Memorial Scholarship**

Edwin Alvarez	Michael Robertson
James Cunningham	Jacob Shapiro
Jason Hobson	Brandon Wollesen

### *2006 Scholarships - continued from page 16*

#### **Center for Turfgrass Science**

Allisyn Gillet  
Mahalaxmi Veerasamy

#### **Golf Course Supt. Assoc of NJ Scholarship**

Justin Hughes  
Zane Raudenbush

#### **NJ State Golf Assoc. and Ralph Engel Caddie Scholarship**

Rolland Gesimondo  
Timothy Sibicky

#### **Sports Field Managers Association of New Jersey**

Daniel Purner

#### **Center for Turfgrass Science H.S. Achievement Award**

Eddie Zhang

#### **Golf Course Builders Association**

Jonathan Mullineaux  
Timothy Sibicky

## **NJTA Patrons...**

*Clippings & Green World* would like to thank our Patrons for their continued support. Please consider adding your name and/or business name to what we hope will be an extensive list of supporters so that this periodical can continue to grow! **New Patrons are listed in green.**

- John Barlok - Finch Services, Inc.
- Shaun Barry - Bayer ES
- Fred Blaicher - Finch Services, Inc.
- Bryan Bolehala - Cleary Chemical
- Steve Chirip - Grass Roots, Inc.
- Kevin Collins - Aquatrols Corp. of America
- Ken Kubik - Grass Roots, Inc.
- Leon's Sod Farm
- Zenon Lis - Burlingham Seeds
- Mike Oleykowski - Fisher & Son
- Plant Food Company, Inc.
- The Scotts Company
- Barbara Vydro - Bloomfield Cemetery

Call (215) 757-NJTA for more information.

RATES: \$100.00 per year - 4 issues

# Calendar of Events 2006

- December 4**    **3rd ANNUAL NJTA STRATEGIC PLANNING MEETING**  
*at Expo 2006 (Invitation Only)*  
*Trump Taj Mahal Casino & Resort*  
*Atlantic City, NJ*
- December 5**    **NJ TURFGRASS FOUNDATION MEETING**  
*at Expo 2006 (Invitation Only)*  
*Trump Taj Mahal Casino & Resort*  
*Atlantic City, NJ*
- December 6**    **GREEN INDUSTRY ALLIED ASSOCIATION MEETING**  
*at Expo 2006*  
*Trump Taj Mahal Casino & Resort*  
*Atlantic City, NJ*
- December 6-7**    **EXPO 2006 TRADE SHOW OPEN**  
*at Expo 2006*  
*Trump Taj Mahal Casino & Resort*  
*Atlantic City, NJ*

## 2007

- May 7**    **12TH ANNUAL RUTGERS TURFGRASS RESEARCH GOLF CLASSIC**  
*Fiddler's Elbow Country Club*  
*Bedminster Township, NJ*
- August 2**    **LAWN, LANDSCAPE & SPORTS TURF FIELD DAY**  
*Adelphia Farm*  
*Adelphia, NJ*
- August 3**    **GOLF & FINE TURF FIELD DAY**  
*Hort. Farm II*  
*New Brunswick, NJ*

### IT'S NEVER TOO LATE TO START PLANNING FOR EXPO 2006...

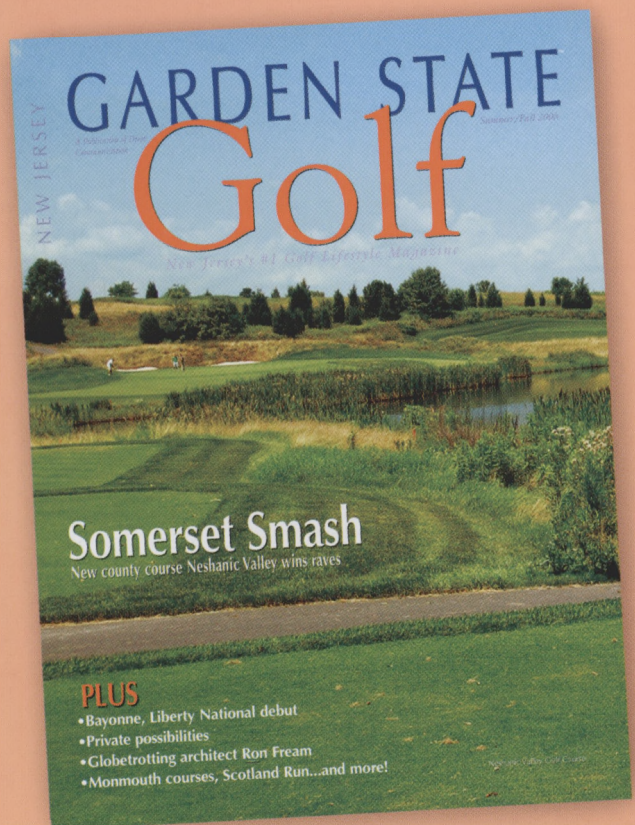
- December 5-7**    **NEW JERSEY TURF & LANDSCAPE CONFERENCE AND EXPO**  
*Trump Taj Mahal, Atlantic City, NJ*  
[www.njturfgrass.org](http://www.njturfgrass.org)



**New Jersey  
Turfgrass  
Association**

# GARDEN STATE GOLF Magazine & Divot Communication

Proudly Support  
New Jersey Turfgrass  
Association



Official Magazine of



**For Advertising Information**  
Contact Us - 800-639-1941  
[www.playnortheastgolf.com](http://www.playnortheastgolf.com)

2005 Expo



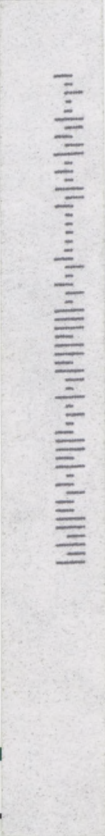
First Class Mail  
U.S. Postage  
PAID  
Bellmawr, NJ  
Permit #58

New Jersey Turfgrass Association  
P.O. Box 340 • Milltown, NJ 08850-0340  
(215) 757-NJTA Fax (215) 741-NJTA  
www.njturfgrass.org

## Board of Directors

- Chris Carson, President &  
Expo Education Chairman
- Dr. Karen Plumley, Vice President
- Barbara Vydro, Treasurer
- Jerry Schoonmaker, Secretary
- Marie Pompei, Immediate Past-President
- Robert A. Dickison, Expo General Chairman
- Shaun Barry, Director
- Jeff Cramer, Director
- Brian Feldman, Director
- Keith Kubik, Director
- Rick Krok, Director
- Pedro Perdomo, Director
- Thom Ritchie, Director
- Michelle Williams, Director
- Dr. Bruce Clarke, Advisor
- Dr. Jim Murphy, Advisor
- Michelle Rickard, Executive Director

MR. JAMES T. SNOW  
U.S. GOLF ASSOCIATION  
PO BOX 708  
FAR HILLS NJ 07931-0708



# PlantStar<sup>INC.</sup>

# CARBOTROL<sup>®</sup> Corp.



## Advanced Washwater Recycle System



- Engineered System Provides:**
- Zero Pollutant Discharge
  - Best Available Technology
  - High Reliability & Low Maintenance

- Designed To Integrate:**
- Vehicle Wash • Fueling • Chemical Mixing
  - For Reuse of All Waters

*Let us show you how INTEGRATED CHEMICAL MANAGEMENT can work for you!*

# PlantStar 706-769-9210