

new jersey turfgrass association



clippings &

Green
World



Spring 2009 | VOL 72

MAY:

**Rutgers Turfgrass
Research Golf Classic**

AUGUST:

**RUTGERS TURFGRASS
RESEARCH FIELD DAYS**

**DECEMBER: GREEN EXPO
TURF AND LANDSCAPE
CONFERENCE**

Turf Equipment & Irrigation Solutions



Storr Tractor Company
Branchburg, NJ
908-722-9830

One great result.

visit www.toro.com



Count on it.

President's Message

by Dr. Karen Plumley, NJTA President

Legacy Benefits

There have been many references in the news lately to the issue of "legacy costs", but for the New Jersey Turfgrass Association our legacy continues to bring us nothing but benefits. So many benefits, in fact, that the New Jersey Turfgrass Association will be kicking off a 40th anniversary celebration at our Green EXPO Turf and Landscape Conference in December to commemorate them.

In preparation for the event, we have formed a "40th Anniversary" Subcommittee, chaired by Ken Kubik, to plan the festivities. You can see the beginnings of our efforts to mark the anniversary in this issue of Clippings, starting with a list of alumni of the turf/agronomy program at Rutgers on page 11. We know the list is incomplete, so please help us complete it. In addition, we will also be recognizing our Hall of Fame winners (see page 16), alumni, former board members and others who have helped to make the nearly 40 year old partnership between the New Jersey Turfgrass Association and Rutgers University so successful. It was the foresight of those like Dr. Henry Indyk, our first executive director, and Leo Cleary, our first president, which helped to build the foundation of our current industry-academic partnership that is today successful beyond measure. A true test of such a partnership comes in times like these, which many agree, are tougher than most. Yet in spite of it all, the partnership continues to thrive.

Witness:

o The continued success of the **Rutgers Turfgrass Research Golf Classic** presented by the New Jersey Turfgrass Foundation to support research and scholarship at the university (Many thanks to Shaun Barry and Rick Krok, co-committee chairs, and the rest of their committee for bringing us another outstanding outing.)

o The upcoming **Rutgers Turfgrass Research Field Days**, whose logistics are facilitated by NJTA, where Rutgers faculty and staff will showcase their world class research efforts.

o The upcoming **Green EXPO Turf and Landscape Conference**, the largest turfgrass educational conference in the state where Rutgers faculty and staff, as well as other prominent turfgrass professionals from around the

continued on pg 4

Table of Contents

Clippings

President's Message	3
From the Executive Director	4
2009 NJTA Patrons	4
What's A Field Day?	5
Where R. U.?	8
Meet Dr. Ning Zhang	9
Meet Board Member: Shannon Sked	10
Rutgers Turfgrass Alums - Missing?	11
Turfgrass Research Wins Again	12
Finding Opps in Economic Downturn for Landscape & Lawn Care Professionals	14
NJTA Hall of Fame Award - 1978	16
Rutgers County Extension Contacts	17
14th Annual Golf Classic Photos	20
Calendar of Events	23

Green World

Integrated Management of Important Turfgrass Insect Pest in New Jersey	6
--	---

CHANGE YOUR RECORDS
TO REFLECT OUR ACCURATE
MAILING & BILLING ADDRESS.
As of 3/1/09, do not use the address below:
PO Box 340, Milltown NJ 08850

All Mail should go to:
NJTA
25 US Highway 46 West
Wayne NJ 07470-6801



**New Jersey
Turfgrass
Association**

25 US Highway 46 West
Wayne, NJ 07470-6801
Phone: (973) 812-6467
Fax: (973) 812-6529
www.njturfgrass.org

President's Message

continued

country share their knowledge and expertise with attendees from New Jersey and surrounding states.

o Our membership rolls, which continue to hold steady demonstrating the value our members see in their association.

All of these are examples of how the turfgrass community continues to benefit from the partnership born almost forty years ago between NJTA, Rutgers University and the turfgrass industry. Virgil once said that "your descendents shall gather your fruits" and those of us in the turfgrass industry most assuredly continue to gather the delectable fruits of our predecessors to this day.

PATRONS

Clippings & Green World would like to THANK our Patrons for their continued support.

Add your name and/or business name to a growing list of supporters:

- DeLalio Sod Farms Inc - Len DeLalio
- DuPont Professional - Karen Hartman
- F.M. Brown's Sons, Inc. - Marie Pompei
- Syngenta - Lee Kozsey
- Stephen Kay Golf Design - Stephen Kay

Call (973) 812-6467
to become a Patron
or email:
execdirector@njturfgrass.org
RATE: \$100.00
for one or more 2009 issues.

Loyalty Reigns

by Cece Peabody, MAT, CMP,

NJTA Executive Director




The fund-raising event of the year, the Rutgers Turfgrass Research Golf Classic, is over. With the current economy and the wet weather a few days before, the committee was concerned. However, the enthusiasm and participation was tremendous!

Loyalty to support this event definitely reigned! There were over 300 attendees and 265 of them golfed... even in the rain. We added the new education hour, "Rutgers Turfgrass Research", with credits available from NJ, PA, NY, and GCSAA. Thirty certificates were signed to earn pesticide credits. Thanks to the Rutgers' professors who designed the talks and power point presentations for this.

The Silent Auction showcased donated products, golf, dinners, and much more...all to add to the bottom line of supporting research programs, grants, special projects, and scholarships for the Center for Turfgrass Science.

It's great to be part of the turfgrass community where friends and colleagues are loyal to the end. And, if you were a golfer, we hope you enjoyed wearing your Oakley sunglasses -- of course, on the next sunny day. Thanks for all you do for turfgrass!



Fisher & Son
COMPANY, INC.
The "Green Industry" Supplier since 1928.

Superior Products for the
Turf and Horticultural Professional!

Tom Currie
Tom Defino
Randy Rider

800.262.2127

110 Summit Drive
Exton, Pennsylvania 19341
800.262.2127 * fax 610.363.0563
fisherandson.com

Andersons

BASF

Bayer

Civitas

EarthWorks

Grigg Brothers

Lebanon

Lido Chem

Plant Health Care

PROKoZ

Redox

Syngenta

TriCure

What's a Field Day?

*by Pedro Perdomo
Field Days Chairman*

As a Rutgers grad and member of the NJTA, I have been to many field days over the years. While having a conversation with a friend recently I came to realize that there are still a few people that haven't attended and are not familiar with what Field Day has to offer. I thought I would take a few lines to give an overview and encourage all interested parties to attend.

The Rutgers Turfgrass Research Field Days are an annual event where the Rutgers Farms that devote space to Turfgrass research invite the public in to see what is new and exciting in the Turfgrass world. The two day event is divided into Golf and Fine Turf on one day, with the second day concentrating on Lawn and Landscape and Athletic fields. The number of people attending can get quite large so we split the attendees into three smaller groups. Don't worry though, because the groups will be rotated and everyone will have the opportunity to visit each and every scheduled stop.

Visit the event and you will quickly notice that there is a real world approach to doing research at Rutgers. Questions that the industry may have on such things as cultural management of disease, managing water use on greens and fairways, how to avoid failure of crabgrass pre-emergent applications, and what are the best grass varieties to use for specific situations are answered here. The researchers will highlight what they have found and what other questions still need to be answered. For those of you needing pesticide credits you will find a healthy amount of pesticide credits for New Jersey and many neighboring states.

If you get the opportunity to attend this year make sure you bring your questions. You may also want to bring a notepad to write down all of the tips that you will get during the day. Also, bring your appetite because the barbeque style lunch has become a field day tradition. And save room for the brownies.



Above: HORT FARM II

Below: ADELPHIA FARM





Integrated management of important turfgrass insect pest in New Jersey

Albrecht M. Koppenhöfer, Associate Professor and Extension Specialist

Benjamin A. McGraw, Postdoctoral Associate, Turfgrass Entomology I

Dept. Entomology, Rutgers University, New Brunswick, NJ 08901

Presently: Assistant Professor, Dept. Golf & Plant Sciences, State University of New York, Delhi, NY 13753

Applied Turfgrass Research from Rutgers, the State University, and the New Jersey Turfgrass Association

The turfgrass entomology program at Rutgers University pursues various avenues to develop information that turfgrass managers can use for safer and more environmentally sound and sustainable management of insect populations in most turfgrass situations. These include testing of new chemical products and their effects on beneficial insects, biological controls, pheromone-based mating disruption technology, and better sampling/monitoring techniques for pest insects.

Entomopathogenic nematodes for white grub management

Entomopathogenic or insect parasitic nematodes are microscopic roundworms that are being studied and commercialized as biological control agents of numerous insects including white grubs in turfgrass. Our research has shown that white grub species vary in their susceptibility to nematodes. The commercially available nematode *Heterorhabditis bacteriophora* has generally provided around 75% control of Japanese beetle grubs when applied in early to mid-September. However, other white grub species such as oriental beetle, European chafer, or masked chafers appear to be less susceptible to *Heterorhabditis* species. Additionally, we found that Japanese beetle and oriental beetle grubs were less susceptible to *Heterorhabditis bacteriophora* as they aged from 2nd to 3rd stage larvae. Therefore, the best time to apply most EPN species against white grubs should be from mid-August into early September when grubs are young and temperatures are optimal for nematode activity.

We have extensively studied *Steinernema scarabaei*, a new species we recently isolated from infected Japanese beetle and oriental beetle larvae in turfgrass areas in New Jersey. *S. scarabaei* holds great promise for curative and long-term suppression of white grubs. It appears to be rather specialized to white grubs as hosts and is highly virulent to larvae of numerous white grub

species. *S. scarabaei* can provide long-term suppression of white grubs at extremely low rates for at least 2 years after applications. Applied against oriental beetle in September, *S. scarabaei* persisted for 4 years after application, providing 50–100% oriental beetle control at 1 month after application (MAT), 96–100% in the following spring (8 MAT), 62–91% at 13 MAT (following grub generation), and 31–94% at 25 MAT. *S. scarabaei* also showed excellent efficacy and persistence over the range of typical turfgrass soils from sandy loam to clay loam. Attempts to mass produce this nematode have been unsuccessful so far. Therefore, we are examining the biology of the nematode to overcome problems with its commercial production.

Synergistic combinations of nematodes and chemical insecticides

In the absence of highly effective, commercially-available nematode species/strains, combining nematodes with synergists may be a feasible alternative for curative white grub management. The most feasible and reliable synergists for nematodes appears to be the neonicotinoid insecticide imidacloprid (Merit). We found that imidacloprid interacts synergistically with several nematode species on the mortality of various white grub species, had no negative effects on nematode reproduction in infected larvae, and was compatible with the nematodes in tank mixes. Combinations of the nematode *H. bacteriophora* and imidacloprid were as effective as imidacloprid alone even at rates as low as 25% of the regular rates for each agent against oriental beetle and Japanese beetle grubs when applied in late August.

We found a similar synergistic interaction on white grub control in combinations of *H. bacteriophora* and chlorantraniliprole, a recently registered turf insecticide (Acelepryn) from the new insecticide class of the anthranilic diamides.

continued on page 7

www.njturfgrass.org

Integrated management of important turfgrass insect pest in New Jersey

Albrecht M. Koppenhöfer, Associate Professor
and Extension Specialist

Benjamin A. McGraw, Postdoctoral Associate,
Turfgrass Entomology I

Dept. Entomology, Rutgers University, New Brunswick, NJ 08901

Development of tools for annual bluegrass weevil IPM

The annual bluegrass weevil (ABW) (formerly 'Hyperodes weevil') is a serious and expanding pest of close-cut annual bluegrass on golf courses through much of the Northeast. The standard control practice is a preventive application of a pyrethroid insecticide targeted at the adults in late April/early May before the females lay eggs. Even though there are only 2–3 ABW generations per year and usually only the first generation causes significant damage (early to mid-June) many superintendents apply 2–6 treatments per year, often covering much of their fairways, tees, and greens. Not surprisingly, incidences of pyrethroid resistance are in the increase.

We have found that various commercially available species/strains of entomopathogenic nematodes can provide good control of the first generation larvae when applied before damage appears. The most promising species at this point appear to be *Steinernema carpocapsae*, *Steinernema feltiae*, and *H. bacteriophora* which have given up to 92% control. However, results have been variable. The most consistent of these species thus far has been *S. carpocapsae*. Species combinations and split applications (1 week apart) may give even better control but need to be further studied. We are also finding that naturally occurring strains of *S. carpocapsae* and *H. bacteriophora* are important natural mortality factors of ABW larvae in fairways that do not receive preventive ABW applications.

Whether using biological or newer and safer insecticides chemistries, our ultimate goal is to allow superintendents to effectively manage ABW populations with spot treatments only when and where necessary to prevent damage. To this end we are also developing more effective monitoring tools based on non-destructive sampling techniques that will allow superintendents to predict ABW problems and dramatically reduce insecticide use. This, in turn, would allow natural enemies of ABW and other turfgrass insects to play a more significant role in suppressing insect pest populations, thereby further decreasing the need for insecticide applications.

We are examining the use of a standard leaf blower inverted to be used as a vacuum to monitor for ABW adults as they emerge on fairways in spring. The vacuum method

www.njturfgrass.org

Green World



has so far proven to be highly effective in detecting adult presence on short mown turfgrass areas. Additionally, when vacuum sampling is conducted over a two to three week period around peak adult activity, the number of adults captured in an area strongly correlates to future larval densities, allowing turfgrass managers to forecast damage.

Oriental beetle mating disruption

The oriental beetle is the most important white grub species in New Jersey and surrounding areas. Our previous research has shown the feasibility of using a sprayable sex pheromone to disrupt oriental beetle mating and reduce larval damage. However, sprayable formulations need to be applied at least twice during the pest's flight period and can contaminate clothing coming in contact with treated surfaces.

Our research has shown that a granular form of the pheromone last longer than the sprayable formulation and does not contaminate shoes or clothing. In 2007, a single application of uniformly distributed granules reduced male trap captures >90% for 5 weeks (total seasonal reduction 97%), but reduced larval populations only by 69%. However, since white grub species other than oriental beetle are often present in NJ turfgrass areas, the efficacy of the mating disruption should be above 90% to be cost effective. Therefore, at least one more season of trials will be necessary to optimize this technology. The cost of mating disruption, once the pheromone is produced in large quantities should be lower than that of new chemical insecticides.

Fig. 1. *Steinernema scarabaei*-infected oriental beetle larvae.



Fig. 2. Oriental beetle – male pursuing female.

Where R.U.?

Mission Statement:

*"The New Jersey Turfgrass Association's mission is to promote the Turfgrass Industry and enhance the environment through education, professionalism, leadership, and our partnership with **Rutgers**, the State University of New Jersey."*

In 2010, the NJTA will celebrate its 40th Anniversary. Since the "**Rutgers** Partnership" is part of our mission, we want to know the status of the R.U. alumni. Whether it was a Certificate, B.S., Master's or Ph.D, we want to know "Where R.U.?" We are planning to launch the 40th Anniversary celebration at the 34th Annual GREEN EXPO Turf & Landscape Conference at Trump Taj Mahal on December 8th-10th, 2009. This Expo will highlight the long tradition of the NJTA and Rutgers working together. We want the alumni to be a part of it.

Please fill out the info below and:

- **Fax** it to the NJTA at (973) 812-6529
 - **Mail** it to the NJTA at 25 U.S. Highway 46 West, Wayne, NJ 07470-6801
 - **Email** it to execdirector@njturfgrass.org
-

Name: _____

Year of Graduation: _____

Check all that apply:

☐ **Certificate** ☐ **Bachelor's Degree** ☐ **Master's** ☐ **Ph. D**

Major: _____

Club/Company: _____

Address: _____

Telephone: _____

Fax: _____

Cell: _____

Email: _____

Home Address: _____

Home Telephone: _____

If you have any question, please contact Keith Kubik at Keith.Kubik@GrassRootsTurfOnline.com

R.U. Rah! Rah!

Meet Dr. Ning Zhang

Dept. of Plant Biology and Pathology
Rutgers, The State University of New Jersey
59 Dudley Road, Foran Hall 201
New Brunswick, NJ 08901
phone: 732-932-9711 x162
zhang@aesop.rutgers.edu

<http://aesop.rutgers.edu/~plantbiopath/faculty/zhang/zhang.htm>

Hello, I would like to introduce myself to the turfgrass industry in New Jersey. My name is Ning Zhang and I am a new faculty member in the turfgrass program at the School of Environmental and Biological Sciences at Rutgers University. I am a mycologist by training and have studied genetics and molecular diagnostics of various groups of plant pathogenic fungi. I received my Ph.D. from Louisiana State University and had postdoctoral training at Penn State and Cornell University before joining the Department of Plant Biology and Pathology and the Center for Turfgrass Science at Rutgers in January 2009.

I have two primary research interests: (1) The development of a rapid and accurate turf disease detection system called a “pathochip,” and (2) studying the population biology of *Rhizoctonia* species and other pathogens that attack turf. The first area will focus on a new technology that could be used to identify multiple pathogens in turfgrass samples. I have had experience developing a pathochip for vegetable diseases and look forward to applying this concept for the detection of turfgrass pathogens. I am very interested in developing molecular tools for the rapid detection and identification of important fungal pathogens of turfgrasses, which will hopefully facilitate and improve disease management.



Dr. Ning Zhang

The second area of interest deals with gaining a better understanding of the diversity of fungal populations. To date, little is known about the variability of *Rhizoctonia* species that attack turf. So I will be comparing isolates of *Rhizoctonia* from throughout the US to learn more about the biology and ecology of this important turfgrass pest. From these population studies, I will try to address key questions associated with plant disease origin, spread and fungicide resistance for this and other turfgrass pathogens.

I look forward to meeting many of you at meetings and field days over the coming year and hope that I will have the opportunity to speak to you about my research interests in turfgrass pathology.

Meet a Board Member...

Shannon Sked

Shannon Sked was elected onto the Board of Directors of the NJTA this past December 2008. Shannon is in senior management of TruGreen LandCare, which offers full service landscape services to commercial clients and is a sister company of TruGreen LawnCare. He is involved in business management in the green industry in NJ, CT, and PA. Shannon is a graduate of Rutgers University (Natural Resource Management, CC 2000); with honors as a George H. Cook scholar, Rutgers Undergraduate Research fellow, and Censor of Alpha Zeta agricultural fraternity. He then went on to graduate studies to earn a Master Thesis in Science in Entomology at Penn State University.



He has been involved in the green industry, focusing on sustainable land management in the landscape field since 1992 in NJ with prior experience as a scientist for the Department of the Navy as well as serving in several positions for landscape contracting companies in NJ. He is a Certified Turfgrass Professional with PLANET and a Board Certified Entomologist with the Entomological Society of America. Shannon is married to Megan Sked with two young boys, Seamus and Aidan ages 2 and 3. They reside in Bordentown and are active in many organizations throughout the state. Shannon hopes to bring a perspective to NJTA as it relates to synergizing momentum between landscape management and how it relates to the turf industry.

The Rutgers Plant Diagnostic Lab

The Plant Diagnostic Laboratory provides accurate and timely diagnoses of plant problems.

Below is a sample of services performed:

- ▶ Disease and Insect Pest Diagnosis
- ▶ Plant and Weed Identification
- ▶ Insect Identification
- ▶ Fungus and Mold Identification
- ▶ Nematode Assays
- ▶ Screening for Neotyphodium Endophytes
- ▶ Fungicide Resistance Screening
- ▶ Other Services Available by Contract

For more information please call us at 732/932-9140 or visit the web for sample submission instructions and forms at:

www.rcrc.rutgers.edu/plantdiagnosticlab.



The Rutgers Soil Testing Lab

The Rutgers Soil Testing Laboratory performs chemical and mechanical analyses of soils.

The following services are routinely performed:

Landscape

- Level 1** Fertility Test: Nutrients, pH, recommendations
- Level 2** Problem Solver (soil/plant suitability test)
- Level 3** Topsoil Evaluation

Greenhouse

Saturated (Organic) Media Extract Analysis: Nutrients, pH, electrical conductivity, inorganic nitrogen

Sport Turf

- Level 1** Fertility Test: Nutrients, pH, recommendations
- Level 2** Complete Test: Nutrients, pH, estimated CEC & cation saturation, soluble salt level, organic matter* content, soil textural class
- Level 3** Sand Root Zone Test

*Organic matter content would be determined by loss-on-ignition for golf course greens, as described by USGA guidelines.

For more information please call us at 732/932-9295, or visit us on the web at:

www.rcrc.rutgers.edu/soiltestinglab.

www.rcrc.rutgers.edu/services

Rutgers Turfgrass Alumni - Who's Missing?

If You know Names Not on this List - Send Any Info to execdirector@njturfgrass.org

***Four Year Rutgers / Cook Students who Graduated with a B.S degree in Plant Science
(Horticulture / Turf Industry Option) or Equivalent at the Time of Graduation.***

Chuck Fatum, 1950's	Bob Wolverton, 1990's	Matt Koch, 2005
Joe Flaherty, 1960's	Gary Gentilucci, 1990's	Mary Provance-Bowly, 2005
Mike Hosfield, 1960's	Tim Andresean, 1990's	Rosemond Pierre, 2005
Al Neuberger, 1960's	Victor Frederico, 1990's	Paul Scapellato, 2005
Bernard McGuinness, 1960's	Howard Nakase, 1990's	Brian Ducey, 2005
Al Turgeon, 1960's	Pedro Perdomo, 1990's	Brad Hart, 2006
Charlie McCrea, 1960's	Craig Tolley, 1990's	Michael Schaeffer, 2006
Bill Dickson, 1960's	Sean Klotzbauch, 1990's	Bruce Culver, 2006
Joe O'Donnell, 1960's	Steve Cronin, 1990's	Dan Purner, 2006
Al Rathjens, 1960's	Margret Stegman, 1990's	Chris Hendrickson, 2007
Chris Carson, 1970's	Carie Mansue, 1990's	Danielle Skoba, 2007
Bruce Clarke, 1970's	Chris Boyle, 1990's	Tim Sibicky, 2007
Marie Pompei, 1970's	David Neufeld, 1990's	Alex Tekulsky, 2007
Bruce Neary, 1970's	Dennis DeSanctis, Jr, 2002	Pete Stone, 2007
Phil Catron, 1970's	Jeff Borajkiewicz, 2003	Chris Skivar, 2008
Mary Beth Clarke (Rue), 1970's	Peter Crawl, 2003	Justin Hughes, 2008
Laura Betts, 1980's	Mike Laudato, 2003	Dale Cruzan, 2009
Victor ????? (Married Laura Betts), 1980's	John Ralli, 2003	Kate Venner, 2009
Brian Minemier, 1980's	Lauren Giordano, 2004	Rolland Gesimondo, 2009
Karen Plumley, 1980's	Robert Shortell, 2004	Zane Raudenbush, 2009
Joe Clark, 1980's	Mike D'Ascanio, 2004	Chris Charnesky, 2009
Rick Krok, 1980's	Dave Kobrick, 2004	Keith Eilertsen, 2010
Josh Honig, 1990's	Ryan Kocsis, 2005	Stephanie Alea, 2010
Brian Feldman, 1990's	Mike Lyons, 2005	Robert Mathias, 2010
Keith Kubik, 1990's	Brian Ducey, 2005	Ryan Pettitti, 2010
Chris Boyle, 1990's	Jim Devaney, 2005	Will Rearson, 2010
Scott Fritz, 1990's	Chris Young, 2005	Michael Morvay, 2010
		Eric Koch, 2010
		Patrick Burgess, 2010
		Gregory Bohus, 2010

Turfgrass Research Wins Again At Fiddler's Elbow

by Shaun Barry

2009 was supposed to be another record breaking year for the Rutgers Turfgrass Research Classic. It was the 14th edition of this event and the results have grown each year. In the life of fundraisers that is a long run. Normally tournaments capture the interest of supporters and great things happen in the first few years. Then as time passes interest wanes and other worthy causes get their attention. That has not happened because Dr. Bruce Clarke and Dr. Bill Meyer are totally committed to the success of the Classic. Each one appeals to their base and those companies have responded. It is not just because a world-renowned scientist or turfgrass breeder is making the request but also because they recognize the strength of the people and the research done at Rutgers.

As it turned out, 2009 was not a record year. It however may have been the most successful event that we have ever had. This has been a year in which the whole world has felt the pain of a terrible recession. Many of the top companies in the world have closed their doors, received bail-outs from the government or filed for bankruptcy. Unemployment will soon exceed 9% and golf tournaments at the PGA and LPGA level are losing sponsors and some are ceasing to exist. It definitely was not the best atmosphere to ask anyone to support anything but it had to be done.

The 16 member golf committee had many meetings to discuss what to do. We lowered our expectations but not our efforts. Bill and Bruce were rewarded for their persistence. Some sponsors were unable to support the event at all and some reduced their level of support but most found a way to repeat their generous donations. The committee also decided that we needed to give the golfers an extra reason to come out and participate. The nice bag that players received in 2008 was replaced by Oakley sunglasses. This choice doubled our cost for a gift but it was extremely popular. We lost money on every golfer but the size of the field exceeded all of our expectations. We ordered 275 pairs expecting to have

25 left-over if we got lucky. When the number of golfers passed the 300 number we had to decide on a response. Unfortunately for the golfers from Rutgers, they were chosen to be the ones not receiving sunglasses. That allowed us to present all of the other golfers with their gift and no one was disappointed. Well maybe a few of the Rutgers people were, but they understood why we had to make this decision.

The only thing that came close to be disappointing was the weather. Our event occurred in the middle of 5 straight days of rain. There was enough rain to cause us to cancel but the committee decided we should play.

It was a good choice. For 15 holes it was fairly dry. The final 3 holes however tested everyone's rain suits and the last green we played was starting to puddle. After a nice hot shower the weather was forgotten and everybody was ready for some great food, bidding on the silent auction and hearing

who had played well enough to win the prizes.

Bruce Clarke thanked all of our sponsors and attendees but he paid special attention to our **Premier Sponsors**. Their help is what allows this tournament to make money. Many of these companies have been Premier Sponsors for all 14 years. **Storr Tractor** and **Syngenta** fall into that category. The other sponsors at this level were **Bayer ES**, **John Deere**, **Maxwell Turf**, **Pennington Seed**, **Proseed Marketing** and **The Scotts Co**. Just below them were the **Eagle Sponsors** and they were **BASF** (with three teams), **Lebanon Turf**, **Paige Electric** and **Mountain View Seeds** and we also had an increase in our **Birdie** and **Par** level sponsorships. Hopefully the economy will turn around and they will be able to move up next year but their support at any level is truly appreciated. Bruce introduced Dean Robert Goodman who spoke briefly and then people started enjoying a well-deserved meal.

continued on page 13



Turfgrass Research...At Fiddler's Elbow

...continued

After dinner we thanked our host Dave McGhee who does everything possible to make this a successful day. In an effort to move things along quickly, I hurried through my announcements and thank-yous. In doing so I forgot to acknowledge the people who allowed us to play that day. These fellows are Tom Breiner, Bob Fellner, Mark Loos and Gary Shupper. Tom is the head superintendent at Fiddlers and Gary, Mark and Bob are responsible for their own course at this 54 hole complex. It was through their knowledge and efforts that kept the courses playable. Without them we would have had to cancel. I apologize for the over-sight gentlemen especially since it was right there on my agenda. Hopefully this thank-you isn't too late.

Once dinner was over we closed the silent auction and started with the prizes. There were no holes-in-one but the winners of the closest to the pin contests came close. All of the winning shots were within 10 feet. Walking away with a Callaway golf bag for their wins were Tony DiBartolomeo III, Pete Giauque, Bill Goodrich, Rick Krok, J.P. Olson, and Chris Walick. Our long drive winners won a pair of Callaway golf shoes. Earning those honors were Roger Christenson, Christine Dyhr, Doug Gray (twice), Darrell Marcinek CGCS, Steve McDonald and NJTA President, Dr. Karen Plumley.

In the team events we will start with the Rutgers Cup. For the third year in a row the group from Maxwell Turf on Long Island gets to place their name on the trophy. Their gross score of 71 on the Forest Course was great playing. The team included Doug Heron, Paul Bidorn, Ken Lockridge and Steve Rabideau. The only year that they haven't won was the first year when John Farrell led his team to victory. As Doug was leaving he told me that they were coming back next year to win it again. With their track record I have to believe him.

We also rewarded the top three teams from each course. This is the scramble event and there were lots of good

scores from many teams and most of the winning teams won on a match of cards. The first place teams were Jeremy Daubert, Brian Lescrinier, Mark Peterson and Dave Walsh (Harrell's), Jack Ayers, Bob Dilk, Joe Memdolia and Ethan Pautis (Grasslands Oregon) and George Buruch, David Bushman, Jim Grassi and Dennis Smith (Lebanon Turf).

We had Mark Kuhns CGCS (President of GCSAA), Jason Dorn, Dan KilPatrick and Tim Moraghan (Baltusrol GC), Rick Krok, Nancy DiRienzo, Mike Pastori and Grover Snyder (Paige Electric) and Rick Fritz, Bill Goodrich and Mark Labree (Bayer ES) finish in second place on their courses. Finishing in third were Steve Craig, Brad Fox, Gordon Kauffman and Joe Kinlin (Grigg Brothers) Ken Kubik, Scott Bosetti, Tim McAvoy

and Mark Mielder (Grass Roots) and Dr Mike Agnew, Dr, Bruce Clarke, Steve McDonald and Dr Mike Fidanza (Syngenta) This last team was an unexpected winner but it proved to be a popular victory. A team with three Ph.D's and one educator is not expected to win anything and the look of surprise on Dr Clarke's face was

priceless. I can only imagine what will happen if he ever beats Dr Meyer in their fundraiser contest.

The evening ended nicely with most of the field there until the end. They walked out into more rain but they took lots of great memories with them. It is a day not to be missed and hopefully you will join them in 2010.

Note: When Dave McGhee reads this I hope he will thank everyone at the course for all of their hard work in making this a success. In particular please thank Doug Graubard for his constant help and for smiling every time I came to him with a change to our players list. Weather like this will always cause disruptions but Doug and the pro-shop were terrific and they need to know we appreciate their professionalism.



Finding Opportunities in an Economic Downturn for Landscape and Lawn Care Professionals

by Shannon Sked, Branch Manager
Board Certified Entomologist (ESA)
Certified Turfgrass Professional (PLANET)
TruGreen LandCare

As a professional organization, NJTA is comprised of various proficient businesses within the greater green industry. And while we, as a combined force, offer benefits for all during times of market downturns, we each face the current economic situation with an degree of uncertainty. We are facing drastic fluctuations in fertilizer costs. We have had to develop creative marketing techniques to try to find our niches. But as a subset of the greater industry, those of us in the landscape and lawn care professions are faced with a sales environment unlike anything experienced in decades.

We are fortunate to have a variety of services we provide, and of which we can redirect our focus as the economy adjusts itself. We are malleable in our business as our client base adjusts its spending habits accordingly. From arbor-care and silvaculture to turf management, we have a variety of services to transition our sales focus as the market demands. This diversity in services offered affords us the great opportunity to retain a healthy revenue flow, employ a healthy workforce, and retain healthy bottom line profit percentages; even if our absolute operating profit suffers. As trends toward “green initiatives” become more commonplace, we can alter our operational programs towards a more sustainable land management approach. As legislation puts restrictions on products we used to have available in our tool-belt, we are able to utilize this trend and focus our ornamental pest control efforts to market Integrated Pest Management principles. As clients’ budgetary constraints limit capital improvements, construction projects, and enhancement installations, we can still streamline our service lines to be more focused on general landscape and lawn maintenance.

I believe it is critical for us to count our blessings in this respect and find the opportunities available for entrepreneurs to do what we do best; get creative and develop our employees into true professionals. An example of using such an opportunity lies in the NJTA Annual Green Expo, where landscape and lawn care professionals have the unique occasion to network and learn key principles that will steer our businesses in a positive direction. Examples of this include:

- **The Education Sessions:** where Rutgers professors and other experts give us the best information available; as well as safety compliance instruction and pesticide credits – but much more than mere “training” we may be used to receiving.
- **The Trade Show Floor:** where local vendors display cutting edge technologies available to landscape and lawn care businesses in order to assist us in selling new services and increasing field productivity through technological advancements.
- **NEW THIS YEAR: Round-robin discussion tables:** where you can directly interface with other professionals and discuss various topics that are critical to your business – the concept of collective intelligence is the cornerstone of the discussion tables.

These are just a few of the great opportunities at the NJTA Annual Green Expo to network and develop talent afforded to participants yearly. The Green Expo is just one example of how we, as landscape and lawn care entrepreneurs, can find opportunity even among all the concerns related to the current economic conditions. I invite each of you to participate in this year’s show in December. It is just one form of an available opportunity.

There are many things we can do collectively, as a subset of the green industry, to help ensure we all thrive as a business without compromising our competitive spirit. I am very interested in hearing your ideas. I offered one here (taking advantage of our own Green Expo and Trade Show right here in NJ) to start the dialogue. If you have any ideas of what we could do as a professional organization to negotiate the current economy, please feel free to reach out to me directly (shannonsked@landcare.com). I will compile your ideas and seek trends, working closely with the Board of Directors and the Expo Committee, in order to ensure we capture best management ideas for our Round-robin discussion tables at the Green Expo. Additionally, if there are any forums that we can use to communicate these collective novel concepts, please feel free to make suggestions.

Here’s to noticing and taking advantage of opportunities as they arise in 2009!

Rutgers Golf Classic Photo Gallery

Some Photos Courtesy of Jim Snow, USGA



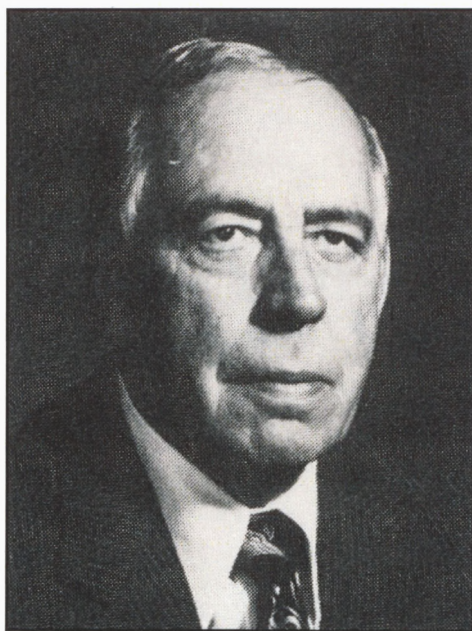
NJTA'S HALL OF FAME AWARD

by Keith Kubik

The New Jersey Turfgrass Association's Hall of Fame Award is "presented annually to a person in recognition of a continuing lifetime commitment of dedication, service, and achievements contributing to the advancement of the turfgrass industry of New Jersey." This award was first given in 1974. As the NJTA nears our 40th anniversary in 2010, we felt it was appropriate to highlight the past winners of our highest award. The following is a reprint from the "New Jersey Turfgrass Association 10th Anniversary Commemorative Book (1980).

Wiley Miner (1978)

"From his early beginning as a farm boy with a likely potential of becoming a professional in basketball, Wiley Miner gained wide fame as an inventor of time and cost-saving machinery and as a leader in the sod industry. A native of Nebraska, Wiley developed an alfalfa dehydration plant and later invented the master stem crusher; a vertical hammermill used throughout the world. In the early 1960's, Wiley migrated to New Jersey and organized the Princeton Turf Farms. Reflecting his intense interest and closeness to "soil and plant" his initial 18 acre venture grew to 2,500 acres in Missouri, Maryland, and New Jersey. Wiley also found time to invent and develop a sod harvester which revolutionized the harvesting of sod, spearheaded a Sod Certification Program, and helped organize the Cultivated Sod Association of New Jersey and the American Sod Producers Association; serving as President of both Associations. Wiley Miner also played a viable role as one of the early organizers in the development of the New Jersey Turfgrass Association and served as the Association's first Treasurer."



Wiley Miner

Customize your
nutrition program
AND reduce your
budget!



Create your own program using
Contec DG with the TNT (turf
nutrition tool) program calculator.

You can download it FREE at
www.ContecDG.com.

See how you can provide MORE
baseline nutrition and reduce
your nutrition budget!

Contec DG[®] Dispersing Granule Technology

Dissolves into
the turf within
10 minutes
after contact
with moisture.



- Eliminate mower pickup
- No golf ball or shoe pickup
- Reduces player downtime

Contact Seeton Turf, Fisher & Son
Co., Terre Company, or your
Andersons territory manager
John Pope 215-441-8420



RUTGERS EXTENSION OFFICES & NUMBERS

RCE of Atlantic County	(609) 625-0056
RCE of Bergen County	(201) 336-6780
RCE of Burlington County	(609) 265-2900
RCE of Camden County	(856) 566-2900
RCE of Cape May County	(609) 465-5115
RCE of Cumberland County	(856) 451-2800
RCE of Essex County	(973) 228-2210
RCE of Gloucester County	(856) 307-6450
RCE of Hudson County	
RCE of Hunterdon County	(908) 788-1339
RCE of Mercer County	(609) 989-6830
RCE of Middlesex County	(732) 398-5262
RCE of Monmouth County	(732) 431-7261
RCE of Morris County	(973) 285-8307
RCE of Ocean County	(732) 349-1246
RCE of Passaic County	(973) 305-5742
RCE of Salem County	(856) 769-0090
RCE of Somerset County	(908) 526-6293
RCE of Sussex County	(973) 948-3040
RCE of Union County	(908) 654-9854
RCE of Warren County	(908) 475-6505

*Please notify the NJTA office if any of the above
numbers have changed. Thank you.*

973-812-6467

RUTGERS EXTENSION OFFICES & NUMBERS

Rutgers Golf Classic Photo Gallery





New Jersey Turfgrass Association 2009 Membership Application

_____ RENEWAL
_____ NEW

Company/Individual Information (Please Print Clearly)

Company Name: _____
Primary Member Name: _____
Title: _____
Address: _____
City: _____ State: _____ Zip: _____
Phone: _____ Fax: _____
E-Mail: _____

Please Select a Membership Level:

- ☐ I - Business Partner \$250.00
(Up to 4 members)
- ☐ II - Business Partner (5 or more)
Each Additional Member(s) \$60.00
(Must first be registered as a Business Partner.)
- ☐ Individual Member
\$75.00 (1 member)
- ☐ Student Member
\$20.00 (1 member)

List Business Products or Services Your Company Provides

- ☐ _____
☐ _____
☐ _____
☐ _____
☐ _____
☐ _____

Check one category which best describes your profession:

- ☐ Golf Course
☐ Lawn Care Applicator
☐ Landscape/Lawn Maintenance
☐ Cemetery
☐ Irrigation
☐ Sod Producer
☐ Parks & Recreation
☐ Schools & Athletic Fields
☐ Manufacturer/Supplier
☐ Professional (Architect, University)
☐ Student
☐ Other _____

Business Partner Additional Member Information

Use another sheet for more members.

1. Name: _____
E-Mail: _____
Address: _____
City, State, Zip: _____
Phone: _____ Fax: _____

2. Name: _____
E-Mail: _____
Address: _____
City, State, Zip: _____
Phone: _____ Fax: _____

3. Name: _____
E-Mail: _____
Address: _____
City, State, Zip: _____
Phone: _____ Fax: _____

Payment Information

_____ Check (payable to NJTA) _____ Visa _____ MasterCard _____ AmEx

Account Number: _____

Exp. Date: _____

Name on Account: _____

3-Digit Code: _____

Authorized Signature: _____

NJTA Dues: \$ _____

NJ Turfgrass Foundation Contribution: \$ _____

Legislative Initiative Contribution*: \$ _____
(*This portion is non-deductible.)

Total Amount Enclosed: \$ _____

Mail to: 25 US Highway 46 West
Wayne NJ 07470-6801
Phone: (973) 812-6467

Fax to: (973) 812-6529

E-Mail: execdirector@njturfgrass.org

Web Site: www.njturfgrass.org

Cece Peabody, MAT, CMP
Executive Director

**RUTGERS
TURFGRASS
RESEARCH
FIELD DAYS**

**AUGUST 4 & 5,
2009**

BE THERE!

SIGN UP FOR FIELD DAYS! USE THIS FORM, WATCH YOUR MAIL, OR REGISTER ONLINE.

2009 RUTGERS TURFGRASS RESEARCH FIELD DAYS

Mail Check (Payable to 'NJTA') to: 25 US Hwy 46 W, Wayne NJ 07470
Fax this form with Credit Card Info or Purchase Order # to: (973) 812-6529
Call if Questions: (973) 812-6467 • **Click** to register: www.njturfgrass.org

NJTA Use Only:
 Date Received: _____

**P
R
O
G
R
A
M**

Tuesday, August 4, 2009
Golf and Fine Turf Day
 Hort. Farm II
 102 Ryders Lane, North Brunswick, NJ
 ** No entry to Farm until 7:00 a.m. **

7:30 AM		Registration Open
8:00 - 8:30 AM	Optional Early Bird	Core Session 1st 80 to sign in
9:00 AM		Tours Begin
1:00 PM		Tours End
1:00 - 2:00 PM		Lunch
2:00 - 2:30 PM	Optional	Core Session Repeat of 8 AM
2:30 PM		Field Day Ends

Wednesday, August 5, 2009
Lawn, Landscape & Sports Field Day
SFMANJ Trade Show & Equipment Demos
 Adelphia Research Farm
 594 Halls Mill Road, Freehold, NJ
 **Vendors can arrive at 6:30 a.m. **

7:30 AM	Visit Vendors	Registration & Trade Show Open
9:00 AM		Tours & Equipment Demos Begin
1:00 PM		Tours & Demos End
1:00 - 2:00 PM		Lunch
2:00 - 2:30 PM	Optional	Core Session
2:30 PM		Field Day Ends

BOTH DAYS: Pesticide Recertification and GCSAA Education Credits Offered

REGISTRATION FEES Each Day (Tuesday or Wednesday) **Onsite Registration or Postmarked After 7/17/09							
Before 7/17/09		EARLY Member ** Registration: \$ 40		Before 7/17/09		EARLY Non-Member Registration: \$ 50	
After 7/17/09 or OnSite		Member ** Registration: \$ 55		After 7/17/09 or OnSite		Non-Member Registration: \$ 65	
** This includes the following associations: New Jersey Turfgrass Assn, Sports Field Mgrs Assn of NJ, Golf Course Superintendents Assn of NJ, NJ Landscape Contractors Assn, Cultivated Sod Growers Assn of NJ, NJ Nursery Landscape Assn. Membership is subject to verification. Check which association you are a member of:							
<input type="checkbox"/> NJTA	<input type="checkbox"/> SFMANJ	<input type="checkbox"/> GCSANJ	<input type="checkbox"/> NJLCA	<input type="checkbox"/> CSGANJ	<input type="checkbox"/> NJNLA		
Circle Which Day(s) Attending:		BOTH DAYS		TUESDAY ONLY		WEDNESDAY ONLY	
EARLY Member		x \$ 40 Each Day		\$ _____		Use this box to add your total from all separate lines. TOTAL MONIES DUE \$ _____	
Member OnSite or After 7/17		x \$ 55 Each Day		\$ _____			
EARLY Non-Member		x \$ 50 Each Day		\$ _____			
Non-Member OnSite or after 7/17		x \$ 65 Each Day		\$ _____			
EARLY Order Rutgers Hat		x \$ 10 Each		\$ _____			
OnSite or After 7/17 Rutgers Hat		x \$ 15 Each		\$ _____			
2009 Individual NJTA Membership		x \$ 75 Each		\$ _____			

R FIELD DAYS REGISTRATION INFORMATION

Register ONLINE at www.njturfgrass.org

PLEASE PRINT CLEARLY • FIELD DAYS will be held Rain or Shine.

* Use ONE Form for no more than 2 Attendees.

Today's Date: _____

First & Last Name/s: (1) _____ (2) _____

Company: _____

Address: _____

City: _____ State: _____ Zip: _____

Phone: (_____) _____ Fax: (_____) _____

**E-mail for Confirmation: _____

** We need your email to send confirmation and directions, plus any updates and future events. Thanks very much.

Payment: Total Amount Enclosed: \$ _____ *All registration fees are non-refundable.

Check # _____ || Credit Card? ☐ Visa ☐ Mastercard ☐ American Express || Purchase Order # _____

Account Number: _____

Exp. Date (MM/YY): ____ / ____ Security Code: _____

Name on Account: _____

Billing Address: _____ Billing Zip Code: _____

Authorized Signature: _____

Purchase Orders must be signed by NJTA. Send PO or Voucher with registration form.

Meet a Board Member...

Dennis Granahan

After graduating from the University of Maryland's Turfgrass and Golf Course Management Program in 1997, I started my career in golf course maintenance at the Echo Lake Country Club in Westfield, NJ as an assistant. From there I moved to The Country Club in Brookline, MA and then to the Westchester Country Club in Rye, NY. I finally broke the ranks as a superintendent at Navesink Country Club in the winter of 2006.

Some career highlights include the opportunity to work closely with PGA officials to elevate the Westchester Country Club to PGA standards for the annual Barclays Classic tournament and help prepare Echo Lake Country Club for the 1999 New Jersey State Open.

Prior to pursuing my desired career path, I was employed in the Economics Department of the U.S. Labor Department. In 1991, I received an economics degree (earth and environmental sciences minor) in 1991 from Wilkes University. Moreover, serving in the National Guard between 1989 and 1995, helped me develop the leadership skills that have carried over to my current career.

I currently reside in Lincroft, NJ, with my wife Raquel (a.k.a. Rocky) and two sons - Reily Paul and Owen Manius.



When We Meet, We Change Our World

Meetings are the birthplaces of ideas, the drivers of business results, the connecting points for people, and the catalysts for sparks of innovation. Attendees and Vendors continually experience the positive return on investment when attending well-conceived, strategically-executed meetings. Be part of one -- the 34th Annual GREEN EXPO in December.

At the **2009 GREEN EXPO Turf and Landscape Conference**, we'll demonstrate ways to enhance the value of your business. Through compelling educational content and vibrant trade show connections, you'll quickly discover that your world will change and what you do is essential to the success of your turf and landscape business.

SAVE THE DATES!
December 8-10, 2009
Atlantic City, NJ



CALENDAR

~ 2009 NJTA Events ~

Monday, May 4, 2009

Rutgers Turfgrass Research Golf Classic

Fiddler's Elbow Country Club

Tuesday, August 4, 2009

Rutgers Turfgrass Research Field Day 1

Golf and Fine Turf

Hort Farm II, New Brunswick NJ

Wednesday, August 5, 2009

Rutgers Turfgrass Research Field Day 2

Lawn, Landscape & Sports Fields

Adelphia Farm, Freehold NJ

Tuesday, December 8th -

Thursday December 10, 2009

34th Annual Green Expo

Taj Mahal Resort

Atlantic City NJ

~ Additional Events ~

Tuesday, November 10 -

Thursday November 12, 2009

6th Annual GCSANJ Crystal Conference

Crystal Springs Resort

Hamburg NJ

For info: www.gcsanj.org

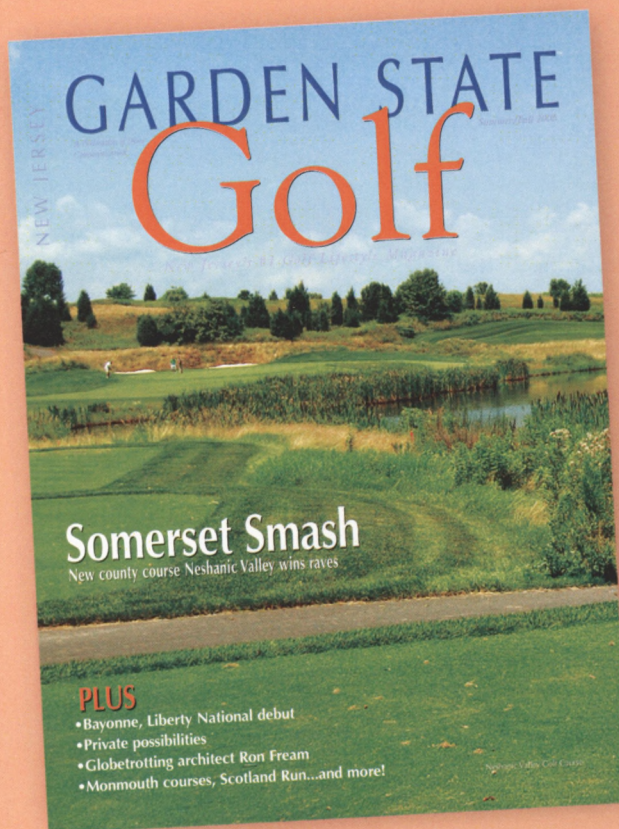
GARDEN STATE GOLF Magazine

&

Divot Communication

Proudly Support

New Jersey Turfgrass Association



Official Magazine of



For Advertising Information

Contact Us - 800-639-1941

www.playnortheastgolf.com



New Jersey Turfgrass Association

25 US Highway 46 W • Wayne, NJ 07470-6801

Phone (973) 812-6467 • Fax (973) 812-6536

Email: execdirector@njturfgrass.org • Website: www.njturfgrass.org

2009 Board of Directors

Dr. Karen Plumley, President

Keith Kubik, Vice President

Matt Sweatlock, Treasurer

Shaun Barry, Director

Patrick Dolan, Director

Brian Feldman, Director

Dennis Granahan, Director

Rick Krok, Director

Pedro Perdomo, Director

Thom Ritchie, Director

Shannon Sked, Director

Michelle Williams, Director

Chris Carson, Immediate Past President & Expo Chairman

Dr. Bruce Clarke, Advisor

Dr. Jim Murphy, Advisor

Richard Buckley, Advisor

Cece Peabody, MAT, CMP, Executive Director

*****AUTO**3-DIGIT 079

James Snow

U.S. Golf Association

PO Box 708

Far Hills NJ 07931-0708

