

new jersey turfgrass association

Green
World



clippings

Issue 3: 2014- Fall | VOL 88

Turf & Landscape GREEN EXPO



**Tuesday - Thursday
December 9 - 11, 2014**

WE'VE MOVED TO THE BORGATA!

**INSPIRE
YOUR
FUTURE!**



2014 Patron Directory

BASF

David Schell
1717 Pleasantville Road
Forest Hill, MD 21050
Ph: (410) 420-0568 Fx: (410) 420-0247
David.Schell@basf.com

MOUNTAIN VIEW SEEDS

Ted Kuenzi
8955 Sunnyview Road NE
Salem OR 97305
Ph: (503) 588-7333

BAYER

Jeffrey Weld
91 Schofield Road
West Milford, NJ 07480
Ph: (914) 419-9384 Fx: (877) 492-1897
jeff.weld@bayer.com

PROSEEDS MARKETING, INC/ ALLIANCE SEED

JP Olsen, Henry Lesinski
13965 Westside Ln S
Jefferson OR 97013
Ph: (541) 928-9999

GRASS ROOTS INC.

Ken and Keith Kubik
PO Box 36
Mt. Freedom, NJ 07970
Ph: (973) 252-6634 Fx: (973) 252-6630
keith.kubik@griturf.com
ken.kubik@griturf.com

STORR TRACTOR COMPANY

Mary Lou DesChamps
3191 Highway 22 East
Branchburg NJ 08876
Ph: (908) 722-9830
kindyk@storrtractor.com

JOHN DEERE GOLF

Tom Hannigan
6 Berkshire Road
Westampton NJ 08060
Ph: (609) 265-1524
hanniganthomasj@johndeere.com

SYNGENTA

Dennis E. DeSanctis Jr.
Lee Kozsey
Plant Protectants
PO Box 7182
Monroe Township, NJ 08831
Ph: (732) 580-5514 Fx: (609) 918-1696
Dennis.DeSanctis@syngenta.com

LEBANON TURF

1600 East Cumberland Street
Lebanon PA 17042
Ph: (315) 263-1974

THE SCOTTS COMPANY

Eric Nelson
14111 Scottslawn Road
Marysville OH 43041
(937) 644-5249

President's Message

Shannon Sked, NJTA President

Record Numbers - What They Really Represent



Any of us who are in a business capacity have some form of numbers or metrics that we use to help determine whether our businesses are considered successful. Business managers and entrepreneurs look at gross profits, operation profits and revenue sustainability to determine the health of the business. Sales representatives look at year-over-year or month-over-month growth to look for trends in how the business is growing or shrinking. But these numbers and metrics, in and of themselves, would be only academic if we didn't know how to interpret these numbers into everyday business realities. The business manager or owner looks at the profits to determine how they can reinvest into the business and drive even further growth and profits. The sales representative uses the growth trends to make informed decisions on how to better penetrate their markets.

In short, numbers and metrics allow us to understand what we are doing well, where we need to focus resources and energies, and how to better support our businesses. The same is true of associations. However, associations determine success in how that association is supporting its membership (adding value) and reaching its mission statement (determining purpose). Still, metrics are used to allow the association determine if it's meeting its goals.

So when we have an incredible event with record numbers, it's not just about bragging about numbers. Instead, it's about understanding that we are meeting our association objectives, supporting the membership, and reaching our mission effectively. And I'm all too proud to announce, **we've had another record breaker in the 2014 Rutgers Field Days**, in which the NJTA coordinates the logistics of the event. Under the leadership of Co-Chairs Pedro Perdomo, Tracy Wadhams, and Craig Tolley along with our stellar Executive Director, Cece Peabody, the event was another incredible success! So thanks to the chairs, all the committee volunteers, and all those who had any hand in supporting this event. It really is about the people that make things happen – and I can report to the entire membership that the Field Days Committee is jammed full of great people doing great things for our industry!

But what does this mean? What does having a record number of attendees have to do with success? For one, it means that the event is seen as a value added activity for many within our membership. Taking time out of the field for a day or two is a sacrifice, and I have to assume that the sacrifice is worth it for so many within our membership. Additionally, it's an event that allows Rutgers to display their research directly to industry professionals, many of which are part of the NJTA. This event in particular is an undeviating demonstration that we are meeting our mission, to "promote the Turfgrass Industry and enhance the environment through education, professionalism, leadership, and our partnership with Rutgers..." After all, it's Rutgers research staff interacting with industry professionals. And the NJTA is proud to be a supporting coordinator of this great Rutgers event!

continued on pg 4

Table of Contents

Clippings

2014 NJTA Patron Directory	2
President's Message	3
From the Executive Director	4
2014 Rutgers Field Days Draws Record Attendance	5
GREEN WORLD: Virus Posts	6 - 8
Legislative Corner - Meet Dominick Mondì	9
Green Expo is Moving!	10
Rutgers Field Days Wrap Up	11
Green Expo GOLF Sessions	12
Green Expo LAWN & LANDSCAPE Sessions	13
Green Expo SPORTS FIELD Sessions	14
Green Expo REGISTRATION form	15
Fun Facts about The Borgata	16
Finding Your Way Around the Borgata	17
Dr. William Meyer Receives 2014 NAPB Impact Award	21
Membership Application	22
Rutgers County Extension Offices & Numbers	23
Calendar of Events	23
NJTA Board of Directors	24

YOU CAN NOW UPDATE YOUR OWN MEMBER INFORMATION at our new

website: www.njturfgrass.org
(Company/Address/Email)

Contact us below if you need help.

NJTA

25 US Highway 46 West

Wayne NJ 07470-6801

(973) 812-6467

execdirector@njturfgrass.org



**New Jersey
Turfgrass
Association**

25 US Highway 46 West
Wayne, NJ 07470-6801
Phone: (973) 812-6467
Fax: (973) 812-6529
www.njturfgrass.org

Change is Good!



by Cece Peabody, MAT, CMP,
NJTA Executive Director

We, the New Jersey Turfgrass Association, are ready for a change. We weren't necessarily looking for it but it found us. Changes brings opportunity.

We heard about the casino closures in Atlantic City - Trump Plaza, Revel, and ShowBoat in late August. We weren't worried about our event at the Taj Mahal at first -- and then heard our own news that they may be closing.

Surprise at first was one reaction...but we took charge calmly and professionally and did full site tours of other hotel properties in AC. We took the challenge to find a new property and make the best decision for our show.

The result is that the Green Expo is moving this year to The Borgata! This is exciting for us - after 18 years at one property, the buzz and beauty of The Borgata should be energizing for everyone. Sure, we'll have to make the hotel change, and we'll have to change a few ways we've held sessions and food events in the past, but we have found a place that welcomes the Green Expo...and they are happy to have our business.

We welcome you to come see the changes in the Green Expo in December...a new hotel, new updated guest rooms, a variety of new restaurants, new places for our social functions, and a new side of Atlantic City.

Please join us for this exciting change! Be ready to see even more when you check in. And, after you have spent your time at The Borgata, be sure to share what you think of the changes that the Green Expo conference has made.

"All things must change to something new, to something strange." Henry Wadsworth Longfellow

President's Message

All within our membership can be proud. The Field Days were a great success! But what is more important than the success of an individual event is what that event implies; in this case, record breaking numbers mean that the NJTA is still delivering value to its membership and meeting its mission.

I would hope that if there is any way at all that we can even better achieve these two goals, anyone within our membership would feel free to reach out to me directly to discuss such possibilities. I am always all-ears for discussions about improvements. There is nothing better than being able to say, "We did it again!"

Shannon Sked
NJTA President

WILL YOU BE THERE? 2014 Green Expo Turf & Landscape Conference December 9-11, 2014

Scott's Turf Builder
eZ seed

GROWS ANYWHERE!*
GUARANTEED!

*Subject to proper care. ©2012 The Scotts Company LLC. World Rights Reserved. 12SE04

Annual Rutgers Turf Research Field Days Draws Record Attendance

by Paula Quintin, SEBS/NJAES
Office of Communications

On July 29-30, 2014, Rutgers held its annual Turfgrass Research Field Days at the Turf Research Farm – Hort Farm II, off Ryders Lane in North Brunswick, NJ. A record setting 800 plus industry professionals attended this two-day event, which has its roots in the 1920s, although regular turf field days in New Jersey did not occur annually until after World War II.

In what may well be the largest “outdoor classroom” event at the university, the latest field research was passed on to industry practitioners in highly-interactive sessions in which the researchers summarized their research and the attendees listened and asked questions. Attendees also qualified for Golf Course Superintendents Association of America education points as well as pesticide applicator re-certification credits from New York, New Jersey and Pennsylvania.

The first of the two days, the “Golf and Fine Turf Research Field Day,” was designed to assist golf course superintendents, over 400 of them, while day two, the “Lawn, Landscape and Sports Field Research Day,” focused on landscapers, landscape contractors and sports field managers.

“This is one of the best attended and anticipated field day events in the country and we are very proud of our efforts to extend the very latest information on turfgrass breeding and management to stakeholders in the mid-Atlantic and Northeastern regions of the U.S.,” says Bruce Clarke, director of the Rutgers Center for Turfgrass Science.

According to a 2001 Economic Survey conducted by the New Jersey Agricultural Experiment Station and the Rutgers Center for Turfgrass Science, the turfgrass industry contributes more than \$3.2 billion each year to the New Jersey economy.

Clarke, a professor and chair of the Department of Plant Biology and Pathology whose faculty predominantly present the cutting-edge research during the field days, stressed that while most of the attendees come from the Garden State, approximately 30 percent are from other states as far away as Oregon, Florida,

www.njturfgrass.org

Texas, and Washington and international industry practitioners from neighboring Canada.

A principal focus of the Rutgers Turf Research Field Days is to highlight new and improved turfgrass varieties developed by Bill Meyer and Stacy Bonos, two world-renowned turf breeders at Rutgers. These new varieties possess enhanced disease, insect and stress tolerance. In other words, “we showcase the best varieties of turfgrass that use less pesticide, fertilizer and water yet still exhibit excellent turf quality,” explains Clarke.

In addition, the two-day event also offered the latest information on best management practices for maintaining turf-

grass in the region as well as research results from Rutgers entomologists, physiologists and weed scientists. The event also included time during both afternoon sessions for “Basic Training for Professional Fertilizer Applicator Certification,” a session conducted by Jim Murphy, extension specialist in turf management. Participants

also had the option to take the examination to become a certified professional fertilizer applicator.

A key partner in the annual field days is the New Jersey Turfgrass Association (NJTA), the largest turfgrass organization in the state, which assists with the non-research portion of the event, including registration and logistical support for both days. This essentially frees up the Rutgers professors to concentrate on the science and teaching during the field days. “This valuable partnership with the NJTA dates back to the 1970s and we’re immensely grateful for their help, year after year,” says Clarke.

The Sports Field Managers Association of New Jersey also assisted with the Lawn, Landscape and Sports Field portion of the program and sponsored tabletop displays by leaders in the turfgrass industry.

A number of other statewide organizations also participate in the Rutgers Turfgrass Research Field Days by advertising the event to their members. These include the Golf Course Superintendents Association of New Jersey, New Jersey Landscape Contractors Association, Cultivated Sod Growers Association of New Jersey, and the New Jersey Nursery and Landscape Association.



Applied Turfgrass Research from Rutgers, the State University, and the New Jersey Turfgrass Association

Landscape X-Men -Richard Buckley

The mighty hosta is no super hero, but its nemesis Hosta virus X sure is. Hosta virus X (HVX) is a rather new disease of hosta that has become a regular visitor to the Plant Diagnostic Laboratory. We get samples of hosta with the disease once or twice every summer, usually from a nursery, and we just got this year's supply.



Line patterns caused by Hosta Virus X. Photo: Sabrina Tirpak, Rutgers PDL

Virus symptoms are quite variable in any plant. The symptoms of HVX in hosta can include some or all of the following: line patterns, mosaics, chlorotic blotches, puckering and twisting, or ringspots. HVX can take leaves and reduce the overall vigor of infected plants. Careful with symptoms, because similar symptoms can be caused by other viruses. Furthermore, there are hosta varieties that can become infected, but display no symptoms at all. Another major complication for recognizing HVX symptoms is that some perfectly normal hosta varieties – and there are thousands of varieties – are variegated or have line patterns, blotches, and oddly shaped leaves that look scarily like diseased plants. In fact, before the disease was characterized in 1996, there were several named varieties on the market that were indeed HVX infected!



Abnormal growth and color due to infection by Hosta virus X. Photo: Sabrina Tirpak, Rutgers PDL

The primary route of infection for HVX is through propagation from infected plants in nursery production. We generally count on our nursery producers to recognize the disease and practice clean culture, which of course, is why most of our samples do indeed come from concerned nursery folks. Once the disease reaches the field, however, transmission is mechanical. Mechanical transmission can occur through HVX-contaminated cutting tools when dividing plants, when removing senescent leaves and scapes, or by routine handling of infected and healthy plants. There are no controls for HVX. Infected plants should simply be destroyed. When culling diseased specimens, be sure to get all the plant material, because residual plant tissues (and composted plants for that matter) can cause infection in susceptible replacement plants.

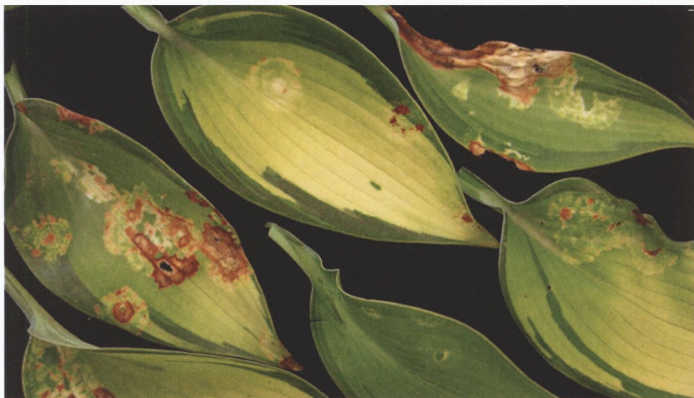


Ringspots due to infection by Impatiens Necrotic Spot Virus. Photo: Sabrina Tirpak, Rutgers PDL

Virus Posts

.continued from page 6

Be aware that not all odd looking hostas are infected with HVX. Hostas are occasionally found to be infected with several other viruses including: Impatiens necrotic spot virus (INSV), Tomato spotted wilt virus (TSWV), Arabis mosaic virus (ArMV), Tobacco ringspot virus (TRSV), Tomato ringspot virus (ToRSV), and Tobacco rattle virus (TRV). We see our fair share of INSV infected plants in the laboratory too. Of course, ISNV is a whole different ball of wax and fodder for another post!



*Necrotic ringspots caused by Impatiens Necrotic Spot Virus.
Photo: Sabrina Tirpak, Rutgers PDL*

My friend Dr. Frank Rossi at Cornell hates hosta like I hate boxwood. I've heard him say on more than one occasion on our weekly turfgrass conference calls that he hopes the deer eat the hosta his wife plants around his farm. (I once read an article that implicated deer transmission of HVX.) I've got a suggestion for Frank – I'll send you an HVX infected plant and then you can leave the gate to the alpacas unlocked... maybe not... the alpacas probably hate them too!



How about a little heat stress to eliminate the surplus hosta? This hosta cooked during high heat stress in 2010. This is not a virus disease! Photo: Richard Buckley, Rutgers PDL

If, however, you are a hosta lover and wind up with some infected specimens, enjoy them for what they are – just be sure to keep from handling or injuring them in any manner... or carefully yank them out and get some new ones. The hosta might be mighty, but they are also disposable...

www.njturfgrass.org

Storr Tractor Company

Storr Tractor Company
Branchburg, NJ 908-722-9830

Thank you

To our valued customers!

Plant Health Focused!

We are your local Liquid Fertilizer Manufacturer and Plant Health Service Provider. Our focus is on providing you with exceptional service and quality products that will exceed your expectations, but not your budget!

- Liquid Fertilizers
- Biostimulants
- Soil Amendments
- Secondary & Micronutrients
- Wetting Agents
- Water Treatments
- Soil Amendments

PLANT
FOOD
COMPANY, INC.

New Jersey
(800) 562-1291
www.plantfoodco.com
[Twitter@PlantFoodCo](https://twitter.com/PlantFoodCo)
[facebook/plantfoodcompany](https://facebook.com/plantfoodcompany)

Your Liquid Fertilizer Experts & Perfectionists Like You!

Applied Turfgrass Research from Rutgers, the State University, and the New Jersey Turfgrass Association

Taken from <http://plant-pest-advisory.rutgers.edu/alfalfa-and-pachysandra/> August 24, 2014

Alfalfa and Pachysandra Together Again? -Richard Buckley

Among the boxwood blight scare come samples of pachysandra with small yellow leaf spots. And rightly so—landscape contractors and residential clients alike are worried that they have a disease in the lowly pachysandra that will move into their fancy boxwood garden. The most common disease of pachysandra is volutella blight, which is caused by the fungus *Volutella pachysandrae*. We definitely see our fair share of volutella blight in the Plant Diagnostic Laboratory, but recently several samples were submitted with atypical leaf spots. Of course the fear of boxwood blight brought them in, but the reality is that these plants were infected with alfalfa mosaic virus (AMV).



Ringspots on pachysandra due to alfalfa mosaic virus. Photo: Pete Nitzsche, Rutgers Cooperative Extension

Symptoms of AMV on pachysandra include chlorotic (yellow) ring spots and blotches on the leaves. This virus is transmitted by the green peach aphid and at least 14 other aphid species. It is also transmitted via seed and mechanically via infected sap from damaged plants. AMV is a generalist and has a host range that includes over 600 plant species in 70 families, so be alert to other odd looking leaf spots in the landscape and vegetable garden.



Ringspots on pachysandra due to alfalfa mosaic virus. Photo: Sabrina Tirpak, Rutgers PDL

This disease is not likely to kill the planting, so control is not usually necessary. For pachysandra, simply removing the symptomatic plants as they appear is the best approach. Remember, the virus moves in sap, so be careful not to wound the adjacent healthy plants as you eradicate the diseased ones. Lastly, insecticides to control the virus spread by killing those poor little aphids has not proven to be successful, so leave your pesticides in the shed!

LEGISLATIVE CORNER

by Dominick Mondì, Executive Director

New Jersey Green Industry Council Update



There is something about a new adventure that gets most people excited. I am no different, and I am very excited about this new opportunity presented to me by the Board of Directors at the New Jersey Green Industry Council.

As Executive Director, I hope that I can build on the work done by my predecessor, *Nancy Sadlon*, and continue to strengthen the voice that the Council gives to the industry in Trenton and beyond.

My career in association management started a little over four years ago when I left the landscape design build world and transitioned into the role of Executive Director of the New Jersey Nursery and Landscape Association. This experience has been rewarding, challenging, and ultimately one of real professional growth. I came out of the green industry and have a real appreciation for it. I view managing NJNLA, and now NJGIC, very much as service positions. As I tell people all the time, I used to work in the industry, now I work for the industry. I could not feel any stronger that professional associations like NJTA and others are essential to a serious and professional industry. I hope that I can bring my talents and passions to bear to effectively grow and strengthen the Council for the benefit of all in the Green Industry.

Of course, while I am new to the Council, the Council certainly should not be new to the readers of *Clippings*! NJGIC and New Jersey Turfgrass Association have enjoyed a fruitful working relationship for years, and that should only continue to grow in the future. At Green Expo this year, whether you stop by the NJGIC booth, attend my seminar, or visit the Silent Auction, be sure to say hi, introduce yourself, and let me know where you think the

NJGIC can better serve the industry professionals and businesses we represent.

Speaking of opportunities to introduce yourself, you might be interested in two chances to engage with NJGIC coming up in the near future. The first **NJGIC Pollinator Conference**, November 11, at the Holiday Inn and Conference Center in East Windsor, just off exit 8. This event is packed with information from industry leaders and academic experts all discussing the concerns surrounding protecting our native and managed pollinators. We will have speakers, including the New Jersey State Apiarist, addressing topics such as understanding the importance of protecting bees and other pollinators, the latest research being conducted, how you can play a role as

a landscape and turf manager, communicating around this issue, and the latest legislative and regulatory implications that will affect your business in the future. This is the first time this event is being held, and you can get all the information at the NJGIC website, www.njgic.org.

The second I mentioned earlier, and it is the silent auction at the NJ Green Expo. If you are coming to Green Expo this year (and I sure hope you are!), don't miss this chance to support the Council's efforts by bidding on some of the exciting entertainment gifts, sports memorabilia, and industry products available at this year's auction. This event has grown to be more exciting each year!

Finally, I want to take a quick chance to say thank you to the leadership at both the New Jersey Green Industry Council and the NJNLA for continuing to put their faith in me to lead these organizations to success, now and in the future. I look forward to continuing a great working relationship with Cece and the whole team at the New Jersey Turfgrass Association.

**2014
Green Industry
Silent Auction**

December 9 & 10 at Green Expo

When you visit Expo, be sure to take a spin down the festive rows of gifts, memorabilia, and more. These treasures await your bid, and you won't need to give up your beads to win at this fundraising jamboree!

Proceeds from the auction benefit the Industry advocacy efforts of the NJGIC

**Bon
chans!**

EXPO IS MOVING!

by Chris Carson
Green Expo Chairman

All was set for the 39th annual Green Expo, with an excellent set of speakers and topics and a full social agenda, when we were hit with the news that our long-standing host hotel was closing. The Expo Committee promptly went into action, visiting a number of possible replacement sites, and I am pleased to report that we have signed a contract with **The Borgata Hotel** in Atlantic City, and the show will go on!

AND WHAT A SHOW WE HAVE:

- Education on the highest order, custom designed to provide you with the information you need to thrive in the green industry
- Pesticide credits in abundance, presented by some of the finest researchers in the country
- Social opportunities to meet your old friends and greet new ones
- A significant upgrade in the quality of our host hotel, including much nicer rooms and lots of first-rate restaurants and meeting areas
- New, fresh meeting rooms and trade show floor
- The chance to interact with the world-class Rutgers faculty, who are there to answer your specific questions and offer solutions to the problems you are facing.

Expo is all about education and sharing, and your committee has worked hard to ensure that you receive full value from your experience at our show. We've scheduled a number of opportunities to meet your peers in a relaxed social setting, and our new host hotel is filled with excellent restaurants and meeting places where you can continue your conversations.

If you figure out the cost of our show relative to the number of credits available, I think you will agree that ours is the best bargain in town: quality education, the least cost-per-credit around, and a fun experience all add up to a show that you can't afford to miss.

Staying overnight? Our contract room rate of only \$89 per night (which includes "Turbo" wi-fi and free gym access) will only last till November 17th, after which availability and cost might change.

Please come to Expo 2014. All of your friends will be there, and we'll be looking for you!



grass roots

*The Best Service
In The Tri-State*

We Pride Ourselves in

- Customer Service
- Technical Support
- Quality Products

We carry a full line of turf maintenance supplies from the leading manufacturers in the industry. Products include: plant protectants, fertilizers, grass seed, tools, golf course accessories, soils, topdressing, mulches, adjuvants and much more.

Website 

Follow & Tweet Us

www.facebook.com/GrassRootsTurf

www.twitter.com/GrassRootsTurf

Serving The Turfgrass Professional Since 1978

**Grass Roots
Turf Products**

www.griturf.com

Address: 4 Middlebury Blvd., Suite 7, Randolph, NJ 07869
Phone: 973-252-6634 - Email: sales@griturf.com

Rutgers Field Days - A Must Attend Event

by Shaun Barry

Is the success experienced by The Rutgers Turfgrass Research Field Days what would be considered another case of “if we build it they will come?” That is possible, but very few Field Days have the attendance seen at Hort Farm II. There must be other reasons.

People attend because the quality of these Field Days is always top-notch. If you weren't able to attend the day that was specifically designed for your industry, you missed seeing or hearing something that would have been helpful. The fact that The Golf Field Day and the Lawn, Landscape, and Sports Field Days set attendance records reflects the respect the industry has for these trials, but this year it also showed how many attendees were able to leave their businesses because the “Fall-Like” weather created lower stress levels throughout the industry in our area. For many years that has not been the case and still the attendance levels have been high. The weather this year was just an extra bonus.

The Center For Turfgrass Science is always striving to do as much research as possible while addressing ongoing issues and improving current methods for controlling pests, diseases, weeds etc. The fight against nature will never end but the people at Rutgers are always giving turfgrass professionals tools and advice that helps them succeed.

If I tried to list every trial from both days, this would be a very long article and that is not its purpose. Most likely someone or some research at Field Day would have addressed your issue. These scientists don't just work in a vacuum. They all extend their research out into what we call the real world. They see and understand what you are going through. They want to help and they are available to do so. Come to the next Field Day and see what you have been missing.

It doesn't get any better than this.

COMPANION

A broad-spectrum biological fungicide for soil-borne and foliar diseases.

Companion's GB03 strain of *Bacillus subtilis* has multiple modes of action to prevent plant diseases. It produces a broad-spectrum Iturin antibiotic and triggers Induced Systemic Resistance (ISR) in plants, where the plant's natural immune system is activated. Companion forms a protective shield along the plant root and crowds out pathogens.

Used by grower's across the country, who will attest to Companion benefits. Including fast-colonizing beneficial rhizobacteria stimulate root growth, promotes plant vigor, and increases crop yield.



POWERFUL!

BIOLOGICAL FUNGICIDE
BACILLUS SUBTILIS GB03

FIGHT DISEASE



Craig Lambert
(917) 416-4588
CLambert@GrowthProducts.com
www.GrowthProducts.com

GOLF EDUCATION PROGRAM

Tuesday, December 9, 2014

CORE SESSION 9 - 11:45 AM & LUNCH

- 9:00 - 11:45 AM CORE SESSION** 5 Credits Core
- 9:00 - 10:00 **NJ DEP Update of Pesticide Rules and Regulations**
Stephen Brass, NJ Dept of Environmental Protection
- 10:00 - 10:30 **NJGIC Update: Issue Spotlight: Neonicotinoids**
Dominick Mondy, Executive Director, NJGIC
- 10:30 - 10:45 **NJTA ANNUAL MEETING**
- 10:45 - 11:45 **Let's Play the Core Quiz! An interactive game show using hand-held voting devices**
Joe Clark, Rutgers University

11:45 AM - 1:00 PM ATTENDEES LUNCH



Sponsored by STORR TRACTOR COMPANY
NJTA's loyal friend, **Mary Lou DesChamps** sponsors lunch again. We thank her for all she does for the industry!

NOTE: Credits listed are anticipated BUT NOT CONFIRMED at print.

GOLF SESSIONS 1-4 PM

- 1-4 PM: 1 Credit Core; 3 Credits - 3B, 6B, 8C, PP2**
- 1:00 - 2:00 **A Very Candid Look at the State of the Golf Industry**
Pat Jones, Editor/Publisher, Golf Course Industry Magazine
- 2:00 - 2:30 **How Do We Prevent Water and Stress Through Effective Techniques of Water/Syringing**
Dr. Bingru Huang, Rutgers University
- 2:30 - 3:15 **Do We Really Know What to Expect from Lime and Gypsum Applied to Annual Bluegrass?**
Chas Schmid, Rutgers Graduate Student
- 3:15 - 4:00 **Annual Bluegrass Weevil Control**
Dan Peck, Grass Systems Entomology
- 4:00 - 8:00 PM TRADE SHOW - DAY 1**
Grand Opening - **Sponsored by SYNGENTA**
"Dine Around" the Trade Show - **Sponsored by BASF**
- LEARNING CENTER SESSIONS:**
- 5:00 - 6:00 PM **3A on Floor (3A credits - 2) - "Tips for Implementing a Landscape IPM Program"**, Rich Buckley, Rutgers U.
- 6:30 - 7:15 PM **GCSANJ Assistant Superintendent Session: Pat Jones, "Tips and Ideas for Going to the Next Level"**
- 8:00 PM - 12:00 AM Hospitality Suite - Signature Room, Casino Level**
Sponsored by Seeton Turf Warehouse

WEDNESDAY, DECEMBER 10, 2014

GOLF SESSIONS 9 - 11:30 AM

- 9 - 11:30 AM: 2 Credits - 3B, 6B, 8C, PP2**
- 9:00 - 9:30 **Fescue to the Rescue: Understanding Your Choices for Different Applications**
Dr. William Meyer, Rutgers University
- 9:30 - 10:15 **Managing Turfgrass to Reduce Pesticide Inputs**
Dr. Gerald Henry, University of Georgia
- 10:15 - 10:45 **How fine it is! Topdressing, sand, soil structure, and disease** James Hempfling, Rutgers Graduate Student
- 10:45 - 11:30 **Primary Rough is not a Secondary Concern!**
Steve McDonald, Turfgrass Disease Solutions
- 11:30 AM - 2:30 PM TRADE SHOW - DAY 2**
- LEARNING CENTER SESSIONS**
- 12:30 - 1:30 **3A on the Floor (3A credits - 2): "Ash: Our New Problem Child"**, Rich Buckley, Rutgers University
- 1:30 - 2:00 **NJLCA Talk: "How to Get Paid for Your Designs"**
Jody Shilan, Jody Shilan Designs/NJLCA

GOLF SESSIONS 2:30 - 5 PM

- 2:30 - 5:00 PM: 2 Credits - 3B, 6B, 8C, PP2**
- 2:30 - 3:00 **Mobile Applications for Enhancing Turfgrass Education** Dr. Pat McCullough, Univ of GA
- 3:00 - 3:30 **Optimizing Fungicide Applications Techniques Revisited** Dr. Mike Fidanza, Penn State University
- 3:30 - 4:15 **How Cultivation and Manganese Fertilization Affect Summer Patch** Dr. John Inguagiato, Univ. of Conn.
- 4:15 - 5:00 **Scheduling Fungicides for Turf Disease Control**
Dr. Rick Latin, Purdue University
- 5:00 - 7:00 PM **MIX & MINGLE Reception** 28 West, Casino Level
Sponsored by GRASS ROOTS
- 8:00 - 11:00 PM **GCSANJ SOCIAL** The Water Club, Indoor Pool
Sponsored by FISHER & SON

THURSDAY, DECEMBER 11, 2014

GOLF SESSIONS 8 AM - NOON

- 8 AM - NOON: 8 Credits - 3B, 6B, 8C, PP2**
- 8:00 - 12:00 PM RUTGERS SEMINARS**
This session is dedicated to the memory of Dr. Stephen Hart, Associate Extension Specialist in Turf and Ornamental Weed Control
- 8:00 - 8:40 **Controlling Perennial Weeds in Cool-Season Turfgrasses**
Dr. Patrick McCullough, Univ. of Georgia
- 8:40 - 9:20 **Reducing Turfgrass Inputs Through Site-Specific Mgmt**
Dr. Gerald Henry, Univ. of Georgia
- 9:20 - 10:00 **Contemporary Issues in Turf Disease Management: Acidovorax Bacteria and SDHI Fungicides**
Dr. Rick Latin, Purdue University
- 10:00 - 10:30 **Fairy Ring Control from an Ecological Perspective**
Dr. Mike Fidanza, Penn State University
- 10:30 - 11:00 **Dr. Stephen Hart's Research on Methiozolin (PoaCure) in NJ**
Dr. James Murphy and Carrie Mansue, Rutgers Univ.
- 11:00 - 11:30 **Fungicide Application Strategies and Selection for Effective Disease Control**
Dr. James Inguagiato, Univ. of Connecticut
- 11:30 - 12:00 **Impact of Soil Characteristics on Turfgrass Diseases**
Dr. Bruce Clarke, Rutgers University



CORE 1 - 3 PM • ProFACT Session 1 - 4 PM

- 12:00 - 1:00 **LUNCH ON YOUR OWN**
- 1:00 - 3:00 PM **CORE Session** 4 Credits Core
Using Chemicals Properly
Rick Fletcher, NuFarm
- OPTIONAL**
- 1:00 - 2:30 **ProFACT - Training for Professional Fertilizer Applicators.**
Training qualifies professionals to take certification exam. Certified Fertilizer Applicators will receive 3 credits (CEUS) of continuing education for training.
Dr. Jim Murphy, Rutgers University
- 2:30 - 4:00 **ProFACT Exam for Certified Fertilizer Applicators (Separate \$75 Exam fee required)**
Dr. Jim Murphy, Rutgers University

LAWN & LANDSCAPE EDUCATION PROGRAM

TUESDAY, DECEMBER 9, 2014

CORE SESSION 9- 11:45 AM & LUNCH

9:00 - 11:45 AM CORE SESSION 5 Credits Core

- 9:00 - 10:00 **NJ DEP Update of Pesticide Rules and Regulations**
Stephen Bross, NJ Dept of Environmental Protection
- 10:00 - 10:30 **NJGIC Update: Issue Spotlight: Neonicotinoids**
Dominick Mondì, Executive Director, NJGIC
- 10:30 - 10:45 **NJTA ANNUAL MEETING**
- 10:45 - 11:45 **Let's Play the Core Quiz! An interactive game show using hand-held voting devices**
Joe Clark, Rutgers University

11:45 AM - 1:00 PM ATTENDEES LUNCH

Sponsored by STORR TRACTOR COMPANY



NJTA's loyal friend, Mary Lou DesChamps sponsors lunch again. We thank her for all she does for the industry!

NOTE: Credits listed are anticipated BUT NOT CONFIRMED at print.

L & L SESSIONS 1 - 4 PM

1:00 - 4:00 PM: 2 Credits - 3B, 6B, 8C, PP2; 4 Credits - 3A

- 1:00 - 1:30 **Why Neonicotinoids Still Matter to You**
Dan Peck, Grass Systems Entomology
- 1:30 - 2:15 **What's New in Landscape Weed Control**
Carrie Mansue, Rutgers Soils and Plants Technician
- 2:15 - 3:00 **It's Not Drought, It's Disease!** *Rich Buckley, Rutgers U*
- 3:00 - 4:00 **How to Add Organic Methods to your Tool Box**
Barry Draycott, Tech Terra Environmental

4:00 - 8:00 PM TRADE SHOW - DAY 1

Grand Opening - **Sponsored by SYNGENTA**

"Dine Around" the Trade Show - **Sponsored by BASF**

LEARNING CENTER SESSIONS:

- 5:00 - 6:00 **3A on the Floor - "Tips for Implementing a Landscape IPM Program"**, *Rich Buckley, Rutgers University*

8:00 PM - 12:00 AM Hospitality Suite - *Signature Room, Casino Level*
Sponsored by Seeton Turf Warehouse

WEDNESDAY, DECEMBER 10, 2014

L & L SESSIONS 9 - 11:30 AM

9 - 11:30 AM: 1 Credit Core; 1 Credit - 3A, 6B, 8C, PP2; 4 - 3B

- 9:00 - 9:30 **How to Use Lime, Gypsum, and Fertilizer to Properly Maintain Soil pH**
Dr. James Murphy, Rutgers University
- 9:30 - 10:30 **Using Insecticides More Effectively by Targeting Multiple Species with the Right Rate at the Right Time**
Dr. Albrecht Koppenhofer, Rutgers University
- 10:30 - 11:00 **Managing Turfgrass to Reduce Pesticide Inputs**
Dr. Gerald Henry, University of Georgia
- 11:00 - 11:30 **BMP's for Residential and Commercial Lawn Maintenance** *Dr. Eric Lyons, University of Guelph*
- 11:30 AM - 2:30 PM TRADE SHOW - DAY 2**
- LEARNING CENTER SESSIONS**
- 12:30 - 1:30 **3A on the Floor: (3A credits - 2) "Ash: Our New Problem Child"** *Rich Buckley, Rutgers University*
- 1:30 - 2:00 **NJLCA Talk: "How to Get Paid for Your Designs"**
Jody Shilan, Jody Shilan Designs/NJLCA

L & L SESSIONS 2:30 - 5 PM

2:30 - 5:00 PM: 1 Credit - 3B, 6B, 8C, PP2; 1 Credit - 13

- 2:30 - 3:30 **Managing Sports Fields, Lawns, and Grounds using Alternative Pesticides in Canada**
Dr. Eric Lyons, University of Guelph
- 3:30 - 4:30 **Compliant Fertilizer Programming for Sports Fields, Lawns, and Grounds in New Jersey**
Dr. James Murphy, Rutgers University
- 4:30 - 5:00 **Performance of Cool-Season Turfgrass Blends and Mixtures Under Low-Input Management**
Brad Park, Rutgers University
- 5:00 - 7:00 PM MIX & MINGLE Reception** 28 West, Casino Level
Sponsored by GRASS ROOTS

THURSDAY, DECEMBER 11, 2014

BUCKLEY'S BOOT CAMP 8 AM - NOON

8 AM - NOON: 4 Credits - 3A, 6B, 8C, PP2; 4 Credits - 3B

- 8:00 - 12:00 PM BUCKLEY'S BOOT CAMP**
Rich Buckley and Sabrina Tirpak, Rutgers Plant Diagnostic Laboratory
- 8:00 - 9:30 **Lepids in the Landscape (covering gypsy moths, bag worms, and others)** *Sabrina Tirpak, Rutgers University*
- 9:30 - 10:00 **Break and Credit SignUps for morning 3A session**
- 10:00 - 11:00 **Turf Diseases of the Third Kind: Serious Diseases We Rarely Talk About** *Rich Buckley, Rutgers University*
- 11:00 - 12:00 **Lepids (and friends) in the Lawn - sod webworm, common army worm, chinch bug, billbug, and crane fly**
Rich Buckley, Rutgers University
- 12:00 - 1:00 **LUNCH ON YOUR OWN**

CORE 1 - 3 PM • ProFACT Session 1 - 4 PM

- 1:00 - 3:00 PM CORE Session** 4 Credits Core
Using Chemicals Properly
Rick Fletcher, NuFarm

OPTIONAL

- 1:00 - 2:30 ProFACT - Training for Professional Fertilizer Applicators.**
Training qualifies professionals to take certification exam. **Certified Fertilizer Applicators will receive 3 credits (CEUS) of continuing education for training.**
Dr. Jim Murphy, Rutgers University
- 2:30 - 4:00 ProFACT Exam for Certified Fertilizer Applicators (Separate \$75 Exam fee required)**
Dr. Jim Murphy, Rutgers University

SPORTS FIELD MANAGERS EDUCATION PROGRAM

TUESDAY, DECEMBER 9, 2014

CORE SESSION 9- 11:45 AM & LUNCH

- 9:00 - 11:45 AM CORE SESSION** *5 Credits Core*
- 9:00 - 10:00 **NJ DEP Update of Pesticide Rules and Regulations**
Stephen Bross, NJ Dept of Environmental Protection
- 10:00 - 10:30 **NJGIC Update: Issue Spotlight: Neonicotinoids**
Dominick Mondì, Executive Director, NJGIC
- 10:30 - 10:45 **NJTA ANNUAL MEETING**
- 10:45 - 11:45 **Let's Play the Core Quiz! An interactive game show using hand-held voting devices**
Joe Clark, Rutgers University

11:45 AM - 1:00 PM ATTENDEES LUNCH



Sponsored by STORR TRACTOR COMPANY
NJTA's loyal friend, **Mary Lou DesChamps** sponsors lunch again. We thank her for all she does for the industry!

NOTE: Credits listed are anticipated BUT NOT CONFIRMED at print.

SPORTS FIELD SESSIONS 1 - 4 PM

- 1- 4 PM: 4 Credits - 3B, 6B, 8C, PP2; 6 Credits - 13**
- 1:00 - 1:30 **Pesticide Risk: A School Perspective** *Dr. Roy Meyer*
- 1:30 - 2:15 **Overseeding and Other Strategies to Reduce Weed Pressure on School Sports Fields**
Dr. Eric Lyons, University of Guelph
- 2:15 - 2:45 **Cultural Strategies To Reduce Turfgrass Diseases On School Sports Fields & Grounds**
Dr. Bruce Clarke, Rutgers University
- 2:45 - 3:00 **SFMANJ Field of the Year Presentation**
- 3:00 - 3:30 **Weed Management on School Sports Fields & Grounds Using Fewer Pesticides**
Dr. James Brosnan, University of Tennessee
- 3:30 - 4:00 **Implementing IPM: Documenting Pest Pressures at a New Jersey School** *Rich Watson, Deptford Twp Schools*
- 4:00 - 8:00 PM TRADE SHOW - DAY 1**
Grand Opening - **Sponsored by SYNGENTA**
"Dine Around" the Trade Show - **Sponsored by BASF**
- LEARNING CENTER SESSIONS:**
- 5:00 - 6:00 PM **3A on the Floor (3A credits - 2) "Tips for Implementing a Landscape IPM Program"**, *Rich Buckley, Rutgers U*
- 8:00 PM - 12:00 AM Hospitality Suite - Signature Room, Casino Level**
Sponsored by Seeton Turf Warehouse

WEDNESDAY, DECEMBER 10, 2014

SPORTS FIELD SESSIONS 7:30 - 11:30 AM

- 7:30 - 8:30 **Early Bird Sports Field Managers**
Networking Roundtable
- 8:30 - 9:00 **Annual Business Meeting**
- 9:00 - 9:30 **The Year in Review**
Brad Park, Rutgers University
- 9:30 - 10:30 **Research on Baseball and Softball Skin Surfaces**
Dr. James Brosnan, University of Tennessee
- 10:30 - 11:00 **The Good, Bad, & Ugly of Synthetic Turf**
- 11:00 - 11:30 **Maintenance** *Jim Cornelius, CSFM, FSC Pro Sciences*
- Sports Field Management at Northern Burlington School District** *Bernard Luongo, No. Burlington Co. Reg. School Dist*
- 11:30 - 2:30 TRADE SHOW - DAY 2**
- LEARNING CENTER SESSIONS:**
- 12:30 - 1:30 **3A on the Floor: (3A credits - 2) "Ash: Our New Problem Child"** *Rich Buckley, Rutgers University*
- 1:30 - 2:00 **NJLCA Talk: "How to Get Paid for Your Designs"**
Jody Shilan, Jody Shilan Designs/NJLCA

SPORTS FIELD SESSIONS 2:30 - 5 PM

- 2:30 - 5:00 PM: 1 Credit - 3B, 6B, 8C, PP2; 1 Credit - 13**
- 2:30 - 3:30 **Managing Sports Fields, Lawns, and Grounds using Alternative Pesticides in Canada**
Dr. Eric Lyons, University of Guelph
- 3:30 - 4:30 **Compliant Fertilizer Programming for Sports Fields, Lawns, and Grounds in New Jersey**
Dr. James Murphy, Rutgers University
- 4:30 - 5:00 **Performance of Cool-Season Turfgrass Blends and Mixtures Under Low-Input Management**
Brad Park, Rutgers University
- 5:00 - 7:00 PM **MIX & MINGLE Reception** *28 West, Casino Level*
Sponsored by GRASS ROOTS

THURSDAY, DECEMBER 11, 2014

CORE 1 - 3 PM • ProFACT Session 1 - 4 PM

- 12:00 - 1:00 **LUNCH ON YOUR OWN**
- 1:00 - 3:00 PM **CORE Session** *4 Credits Core*
Using Chemicals Properly
Rick Fletcher, NuFarm
- 1:00 - 2:30 **OPTIONAL ProFACT - Training for Professional Fertilizer Applicators.**
Training qualifies professionals to take certification exam. **Certified Fertilizer Applicators will receive 3 credits (CEUS) of continuing education for training.**
Dr. Jim Murphy, Rutgers University
- 2:30 - 4:00 **ProFACT Exam for Certified Fertilizer Applicators (Separate \$75 Exam fee required)**
Dr. Jim Murphy, Rutgers University

TRADE SHOW HOURS

Tuesday, December 9, 2014

4:00 PM - 8:00 PM

"Dine Around" the Trade Show

Sponsored by BASF

Wednesday, December 10, 2014

11:30 AM - 2:30 PM

Lunch on Trade Show Floor

Updated Pesticide Credits Awarded from all states will be posted at: www.njturfgrass.org

The BORGATA Hotel • Atlantic City, NJ

15

- THE BORGATA HOTEL CASINO AND SPA - FUN FACTS

Here's some information about our new hotel:

The Borgata Hotel Casino and Spa is located on the Marina side of Atlantic City at 1 Borgata Way.

The trade show will be in The Event Space, an 88,000 square foot room, column-free, and flexible to hold our education sessions as well as our exhibits. Additional Studio Rooms are on the same floor for break-out sessions, as well as two executive boardrooms.

Downstairs right off the casino floor, there is The Music Box, a stage and stadium seating space where our Core Session will be held.

There are five signature restaurants for the ultimate dining experience brought to you by world-class chefs: Bobby Flay Steak, Fornelletto, Izakaya, Old Homestead Steakhouse, and Wolfgang Puck American Grille.

For more casual dining options, there are the Borgata Buffet, Borgata Baking Company, Bread and Butter, Now, Sunroom, The Cafeteria, and The Metropolitan. Two of Expo events will be held in either 28 West, or the Signature Room.

Of course, Borgata has a 161,000 square foot casino that is always buzzing, two spas, five indoor/outdoor pools and five boutique shopping experiences.

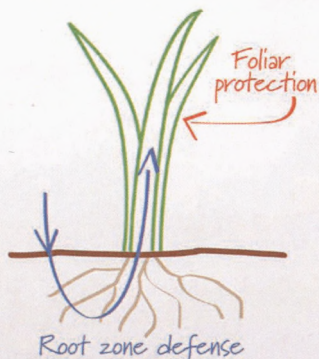
You can also always relax in The Living Room, the comfortable lobby space with wifi and small tables and couches.

The Green Expo is excited about the positive change to the 2014 conference. We hope you will experience it all when you're there.

Phone: (609) 317-1000

Web: www.theborgata.com

Protect from root to leaf tip with one defensive play.



Headway® fungicide takes the guesswork out of disease control by providing truly broad-spectrum control of all major turf diseases, including anthracnose, brown patch and dollar spot. Featuring two active ingredients, Headway moves into the leaf and sheath upon application and also moves from the soil into the roots and translocates upward.

For more information contact:

Dennis DeScantis

732-580-5514

Dennis.Descantis@syngenta.com

Lee Kozsey

215-796-0409

Lee.Kozesy@syngenta.com



syngenta®

©2014 Syngenta. Important: Always read and follow label instructions. Some products may not be registered for sale or use in all states or counties. Please check with your state or local extension service to ensure registration status. Headway®, the Alliance Frame and the Syngenta logo are trademarks of a Syngenta Group Company. MW 1LGG4006 3/14

Finding Your Way Around The Borgata

Map Key

FINE DINING

- 1 Fornelletto
- 2 Izakaya
- 3 Old Homestead
- 4 Bobby Flay Steak
- 5 Wolfgang Puck American Grille

CASUAL DINING

- 1 Borgata Baking Company
- 2 The Metropolitan
- 3 Noodles Of The World (N.O.W.)
- 4 Borgata Buffet
- 5 Bread + Butter
- 6 The Cafeteria
- 7 Sunroom

SHOPPING

- 1 Retail Piazza
- 2 Borgata & Co.
- 3 The Shoppes at The Water Club

SPA

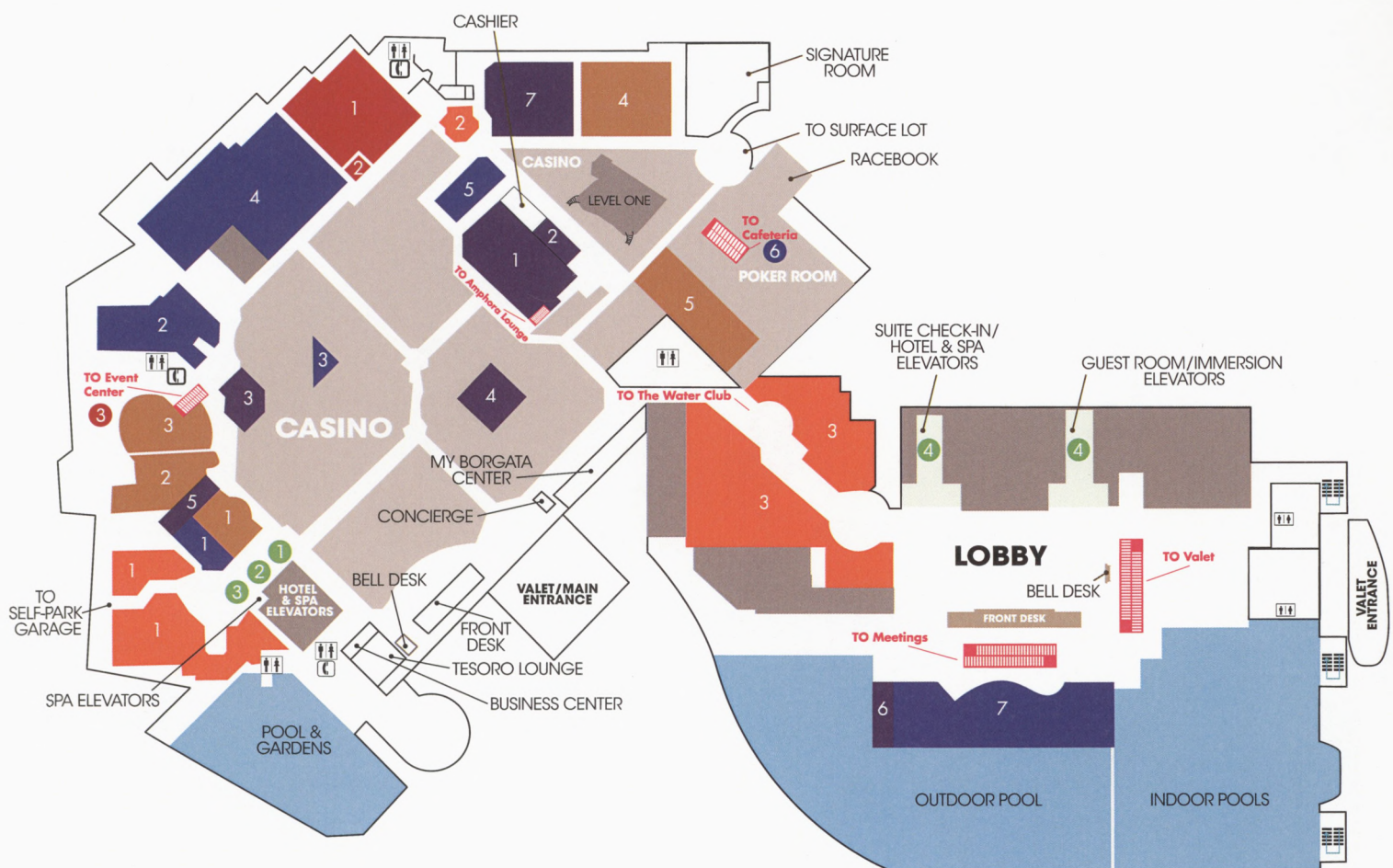
- 1 Spa Toccare
- 2 The Salon
- 3 The Barbershop
- 4 Immersion Spa at The Water Club

NIGHTLIFE/BARS

- 1 MIXX
- 2 mur.mur
- 3 Gypsy Bar
- 4 B Bar
- 5 Long Bar
- 6 Sunbar
- 7 28 West

ENTERTAINMENT

- 1 The Music Box
- 2 Box Office
- 3 Event Center



Level 1
BORGATA

Level 1
THE WATER CLUB

NJNLA Summer Plants Symposium - August 12, 2014



Above: *Thom Ritchie*, NJTA Board Director, attends our allied association New Jersey Nursery & Landscape Association event, Summer Plants Symposium



Top Right: *Brad Park*, Rutgers University

Bottom Right: *Dominick Mondì*, Exec Director, speaks to attendees.





When failure isn't an option...

NEW!







The Chemical Company

Say hello to the next generation in broad-spectrum disease control and advanced plant health. With benefits like enhanced photosynthesis and root growth, **Lexicon™ Intrinsic™ brand fungicide** helps you – and your greens – stand up to turf challenges. Because when the stakes are this high, failure is not an option.

For more information please visit betterturf.basf.us

Always read and follow label directions.

SNAPSHOTS FROM THE 2014 RUTGERS TURFGRASS RESEARCH FIELD DAYS

JULY 29th - Golf & Fine Turf Day

Photos Courtesy of Matt Sweatlock, NJTA



More SNAPSHOTS FROM THE DAY...2014 RUTGERS TURFGRASS RESEARCH FIELD DAYS JULY 30, 2014 - Lawn, Landscape & Sports Field Days



Dr. William Meyer Receives 2014 NAPB Impact Award

National Association of Plant Breeders made the presentation of awards in Minneapolis, MN in August at the NAPB Annual Meeting.

The National Association of Plant Breeders (NAPB), was begun as an initiative of the Plant Breeding Coordinating Committee (PBCC) which arose from a Plant Breeding Symposium in 2005. The PBCC (official committee SCC 080) is a forum for leadership, regarding issues, problems, and opportunities of long-term strategic importance to the contribution of plant breeding to national goals. The NAPB is the outreach group that represents plant breeders in federal, state, commercial and non-government organizations.

PLANT BREEDING IMPACT AWARD

Recognizes an individual who has made significant advancements in the field of plant breeding, specifically in the area of applied variety and/or technology development. Public or private plant breeders whose improved germplasm or technological contributions have had a measurable impact on crop production are eligible to receive this award.



Dr. William (Bill) A. Meyer was raised on a small farm in Lisle, Illinois as one of six children. He began his career in the golf course industry working for his father who was a Golf Course Superintendent. In 1968, he received a B.S. from the University of Illinois Champaign /Urbana and went on to receive his M.S. (1969) and PH. D. (1972) in Plant Pathology from the same university.

As part of his Ph.D. studies, he spent one year in Central India working as a USAID member studying soybean root diseases. After completing his Ph.D., he obtained a Research Director's position at Warren's Turf Nursery Inc., Illinois.

He moved to Western Oregon in 1975 and became a partner in Turf-Seed Inc. and Pure-Seed Testing Inc., based out of Hubbard Oregon. At Pure Seed Testing, he developed the leading commercial plant breeding program in the USA at the time with over 70 Plant Variety Protection Certificates issued for improved turfgrasses. He sold his interests in these corporations in 1996 and took a position as a tenured Full Professor and Director of Turfgrass Breeding at Rutgers University.

Under his leadership, the turfgrass breeding program at Rutgers has flourished with over 400 new improved turfgrass cultivars being developed or co-developed by his efforts. In addition, the resulting turfgrass cultivars have been top performers in the National Turfgrass Evaluation Program compared to all other cool-season turfgrass entries.

His most important accomplishments, however, have been the students he has mentored including Crystal-Rose Fricker who received her M.S. from Oregon and the seven Ph.D. and two M.S. students he has advised at Rutgers.

In all, the success of Dr. Meyer's students and his numerous awards are a testimony to his contributions to the turfgrass seed industry at both the national and international level.



New Jersey Turfgrass Association

25 US Highway 46 West • Wayne NJ 07470
Phone: 973.812.6467 • Fax: 973.812.6529

New Jersey Turfgrass Association MEMBERSHIP APPLICATION

Membership shall be open to all interested in the development and maintenance of turf.
It shall represent all facets of the turf industry, including persons or organizations
that grow or manage turf, or supply materials and services to the Green Industry.

JOIN ONLINE: www.njturfgrass.org

• BENEFITS OF MEMBERSHIP •

- Savings on Green Expo & Field Days Registration fees
- Opportunities to earn Pesticide Applicator License Credits
- *Clippings* Quarterly Magazine
- Membership Directory
- Outreach & Education impact in Trenton
- Support of Rutgers University's Turf Research and turf programs
- Marketing opportunities in NJTA publications
- Participation in events that raise scholarships for the NJ Turfgrass Foundation
- Website: www.njturfgrass.org

Membership Category Types (Annual Dues based on calendar year: January 1 – December 31)

All members receive separate mailings of NJTA publications and meeting notices.

- | | |
|---|---------------------|
| <input type="checkbox"/> BUSINESS PARTNER (Manufacturer/Supplier or Sod Producer)
<i>UP TO FOUR individuals covered in this membership fee.</i> | \$275.00 |
| <input type="checkbox"/> ADDITIONAL BUSINESS PARTNER (5 or more) | \$65.00 each |
| <input type="checkbox"/> TURFGRASS PARTNER (Golf Course, Lawn Care, Landscaper)
<i>UP TO THREE individuals covered in this membership fee.</i> | \$210.00 |
| <input type="checkbox"/> ADDITIONAL TURFGRASS PARTNER (4 or more) | \$65.00 each |
| <input type="checkbox"/> INDIVIDUAL MEMBER (ONE Business or Turfgrass Partner) | \$80.00 |
| <input type="checkbox"/> STUDENT MEMBER (Those enrolled in turf-related educational programs.) | \$20.00 |

Member Information

Name # 1 _____ Title _____	
Association/Company _____	
Address _____	
Is Address? _____ Business _____ Home	
City _____	State _____ Zip _____
Phone _____	Fax _____
Email _____	Website _____

Name # 2 _____ Title _____	
Association/Company _____	
Address _____	
Is Address? _____ Business _____ Home	
City _____	State _____ Zip _____
Phone _____	Fax _____
Email _____	Website _____

CALENDAR

2014 Event Dates

Tuesday - Thursday

December 9-11, 2014

GREEN EXPO

Turf & Landscape Conference

2015 Event Dates

Monday, May 4, 2015

Rutgers Turfgrass Research Golf Classic

Fiddler's Elbow Country Club

Tuesday, July 28, 2015

Wednesday, July 29, 2015

Rutgers Turfgrass Research Field Days

Hort Farm II and Adelphia Farm

RUTGERS EXTENSION OFFICES & NUMBERS

RCE of Atlantic County (609) 625-0056

RCE of Bergen County (201) 336-6780

RCE of Burlington County (609) 265-5050

RCE of Camden County (856) 216-7130

RCE of Cape May County (609) 465-5115

RCE of Cumberland County (856) 451-2800

RCE of Essex County (973) 228-3179

RCE of Gloucester County (856) 307-6450

RCE of Hudson County (973) 353-5525

RCE of Hunterdon County (908) 788-1339

RCE of Mercer County (609) 989-6830

RCE of Middlesex County (732) 398-5262

RCE of Monmouth County (732) 431-7260

RCE of Morris County (973) 285-8304

RCE of Ocean County (732) 349-1246

RCE of Passaic County (973) 305-5740


RCE of Salem County (856) 769-0090

RCE of Somerset County (908) 526-6293

RCE of Sussex County (973) 948-3040

RCE of Union County (908) 654-9854

RCE of Warren County (908) 475-6505



Interface® is a versatile plant health solution that works throughout the year. Control disease and get stronger, healthier turf. Learn more at backedbybayer.com/interface.

Contact Jeff Weld at (914) 419-9384 or Jeff.Weld@bayer.com.

Bayer CropScience LP, Environmental Science Division, 2 TW Alexander Drive, Research Triangle Park, NC 27709, 1-800-331-2867, www.BackedbyBayer.com. Bayer, the Bayer Cross, and Interface are registered trademarks of Bayer. Not all products are registered in all states. Always read and follow label instructions carefully. ©2013 Bayer CropScience LP.

Please notify the NJTA office if any of the above numbers have changed. Thank you.

973-812-6467 • execdirector@njturfgrass.org



New Jersey Turfgrass Association

25 US Highway 46 W • Wayne, NJ 07470-6801

Phone (973) 812-6467 • Fax (973) 812-6536

Email: execdirector@njturfgrass.org • Website: www.njturfgrass.org

2014 Board of Directors

Shannon Sked, President

Dennis DeSanctis Jr, Vice President

Darrell Marcinek, Secretary

Matt Sweatlock, Acting Treasurer

Cece Peabody, MAT, CMP, Executive Director

Matt Sweatlock, Past President & Foundation President

Keith Kubik, Past President, NJTA & NJTF

Shaun Barry, Director

Brian Feldman, Director

Matt Paulina, Director

Nick Polanin, Director

Pedro Perdomo, Director

Thom Ritchie, Director

Craig Tolley, Director

Tracy Wadhams, Director

Chris Carson, Expo Chairman

Dr. Bruce Clarke, Advisor

Dr. Jim Murphy, Advisor

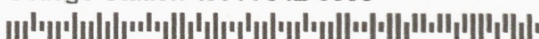
*****AUTO**MIXED ADC 07099

Dr. James B. Beard

International Sports Turf Institute

PO Box 10065

College Station TX 77842-0065



The Rutgers Plant Diagnostic Lab

The Plant Diagnostic Laboratory provides accurate and timely diagnoses of plant problems.

Below is a sample of services performed:

- ▶ Disease and Insect Pest Diagnosis
- ▶ Plant and Weed Identification
- ▶ Insect Identification
- ▶ Fungus and Mold Identification
- ▶ Nematode Assays
- ▶ Screening for Neotyphodium Endophytes
- ▶ Fungicide Resistance Screening
- ▶ Other Services Available by Contract

For more information please call us at 732/932-9140 or visit the web for sample submission instructions and forms at:

www.rcrc.rutgers.edu/plantdiagnosticlab.



The Rutgers Soil Testing Lab

The Rutgers Soil Testing Laboratory performs chemical and mechanical analyses of soils.

The following services are routinely performed:

Landscape

- Level 1 Fertility Test: Nutrients, pH, recommendations
- Level 2 Problem Solver (soil/plant suitability test)
- Level 3 Topsoil Evaluation

Greenhouse

Saturated (Organic) Media Extract Analysis: Nutrients, pH, electrical conductivity, inorganic nitrogen

Sport Turf

- Level 1 Fertility Test: Nutrients, pH, recommendations
- Level 2 Complete Test: Nutrients, pH, estimated CEC & cation saturation, soluble salt level, organic matter* content, soil textural class
- Level 3 Sand Root Zone Test

*Organic matter content would be determined by loss-on-ignition for golf course greens, as described by USGA guidelines.

For more information please call us at 732/932-9295, or visit us on the web at:

www.rcrc.rutgers.edu/soiltestinglab.

www.rcrc.rutgers.edu/services