

The Grange Visitor

SCHOOLCRAFT, - - MAY 1

Single copy, six months, 25
Eighty copies, one year, 50
Eleven copies, one year 5 00

To ten trial subscribers for three months we will send the VISITOR for \$1 00
For new subscribers, canvassers are authorized to retain one-third of the regular subscription price to compensate for their work.

OUR CLUBBING LIST.

Table with columns: Name, Regular Price, With Variations. Lists various publications like American Farmer, Grange Bulletin, etc.

INDEX TO THIS NUMBER.

Set Out Trees - Farm Drainage Again - Butter-Making - Rural Prize Essay - No. 11 - Sound and Pathy Advice to the Farmer - Exchange Table - Ducking Horses' Tails. 1

Secretary's Department.

J. T. COBB, - - SCHOOLCRAFT.

SEED CORN.

Have you tested your seed corn. Falling to do so may expose you to the loss of a corn crop this year.

Those interested in creamers will notice that the advertisement of McCall and Duncan now bears date Kalamazoo instead of Schoolcraft.

"TEXAS" wants a very short anonymous letter published in the VISITOR. He gives us a little of his wisdom by quoting Shakespeare, but all this must be thrown away, because he overlooked the fact that grange papers like newspapers see the propriety of refusing all anonymous articles.

We had the pleasure of entertaining Mrs. A. C. Bristol at our house when on her lecture tour in March last, and became much interested in her description of a co-operation association in France.

As a more exact answer to enquiries, she gave me some manuscript, which I take the liberty of presenting to the readers of the VISITOR.

Here is illustrated the substantial benefits of intelligent co-operation guided and guarded by an intelligent unselfish friend of his race, with such important business elements introduced and recognized, as seem to give some hope of permanence to the scheme.

THE DYNAMITE QUESTION.

England is deeply agitated by the late attempt to destroy life and property by explosions of dynamite in different parts of London.

Yet the fact remains that the study and invention of explosives have been made especially within the last few years with marvelous results.

The whole course of modern civilization has been molded and shaped by the introduction and use of gunpowder, the first great explosive.

The Invincibles and other malcontents who are waging war against England seem not at all discouraged by their repeated failures to touch their dynamite at the right time and in the right place to produce the maximum of destructive effects.

The indifference and merry-making on the part of the press and people on this side of the Atlantic are not at all reassuring in such emergencies.

Other leading papers in England are uniting in the demand that our government should exert itself to suppress the conspiracies openly formed in our cities for the purpose of wholesale murder and assassination.

It cannot be denied that these miscreants are often encouraged in their crimes by the press and people of this country. The schemes thus encouraged are plots not merely against England, but they are conspiracies against civilization in all countries.

As those who have been thinking about growing sorghum must soon get about the work. We have given some space in this number to the subject, hoping it will stimulate to plant more.

No subject relating to practical agriculture should receive more attention at this time than growing sorghum and the Grange furnishes the very best possible opportunity for considering the subject in all its bearings.

Civil government is far from perfection, and all efforts of good citizens in that direction will come short of attaining that condition; but as the fellow said who fired at the moon he did not expect to hit it, but he knew he would come nearer hitting it than he would if he fired the other way.

THE HUDSON BAY ROUTE TO EUROPE.

The wheat raisers of the Red River valley have determined that railroad and elevator extortions can no longer be patiently endured.

The very low price of wheat has served to stimulate the search for a way of escape that had some show of permanent relief.

The plan thus far seems to be entirely feasible. The principal objection is the uncertainty about the navigation of Hudson Bay.

There is an abundance of timber, and endless supplies of anthracite coal, iron, copper and other minerals.

By adopting such a route, the escape from railroad oppression would be most complete. The products of the country would be taken out of the back door and laid down in Europe at an immense saving.

It is not necessary that farmers neglect their farming business in order to take part in politics. The successful farmer sees to it, that he has good teams, and employs only good, capable men to drive them.

What we have said is only in line with what we have been saying in the last half dozen issues of the VISITOR.

What we have said is only in line with what we have been saying in the last half dozen issues of the VISITOR.

What we have said is only in line with what we have been saying in the last half dozen issues of the VISITOR.

What we have said is only in line with what we have been saying in the last half dozen issues of the VISITOR.

What we have said is only in line with what we have been saying in the last half dozen issues of the VISITOR.

We think it time farmers gave this matter more intelligent attention. We think they should look at the facts which we have given in regard to representations in congress from this State and for State officers.

Bro. E. R. Williams, of Ionia, has furnished an excellent jotting for this number. We want more than we get of such, that is, a brief, free expression of opinion upon any subject of interest to the farmer.

Now this does not accord with our opinion of the better way. If this is a government of the people, for the people; then the people will not be protected in their rights if they abandon their interests to the care of "lawyers" and "politicians."

We do not say that a lawyer working in the line of his profession may not be an honorable man and a useful citizen. So of the politician.

Our advice to farmers is, keep up with the times as farmers. Don't raise scrub stock; don't keep sheep that shear 3 or 4 pound fleeces; don't use the old make of tools that your fathers did 30 years ago; don't think you know all there is to be known about farming; don't suppose your farm will run itself and keep you out of debt if you don't give it your personal attention.

Our advice to farmers is, keep up with the times as farmers. Don't raise scrub stock; don't keep sheep that shear 3 or 4 pound fleeces; don't use the old make of tools that your fathers did 30 years ago; don't think you know all there is to be known about farming; don't suppose your farm will run itself and keep you out of debt if you don't give it your personal attention.

Our advice to farmers is, keep up with the times as farmers. Don't raise scrub stock; don't keep sheep that shear 3 or 4 pound fleeces; don't use the old make of tools that your fathers did 30 years ago; don't think you know all there is to be known about farming; don't suppose your farm will run itself and keep you out of debt if you don't give it your personal attention.

Our advice to farmers is, keep up with the times as farmers. Don't raise scrub stock; don't keep sheep that shear 3 or 4 pound fleeces; don't use the old make of tools that your fathers did 30 years ago; don't think you know all there is to be known about farming; don't suppose your farm will run itself and keep you out of debt if you don't give it your personal attention.

Our advice to farmers is, keep up with the times as farmers. Don't raise scrub stock; don't keep sheep that shear 3 or 4 pound fleeces; don't use the old make of tools that your fathers did 30 years ago; don't think you know all there is to be known about farming; don't suppose your farm will run itself and keep you out of debt if you don't give it your personal attention.

Our advice to farmers is, keep up with the times as farmers. Don't raise scrub stock; don't keep sheep that shear 3 or 4 pound fleeces; don't use the old make of tools that your fathers did 30 years ago; don't think you know all there is to be known about farming; don't suppose your farm will run itself and keep you out of debt if you don't give it your personal attention.

Our advice to farmers is, keep up with the times as farmers. Don't raise scrub stock; don't keep sheep that shear 3 or 4 pound fleeces; don't use the old make of tools that your fathers did 30 years ago; don't think you know all there is to be known about farming; don't suppose your farm will run itself and keep you out of debt if you don't give it your personal attention.

We think it time farmers gave this matter more intelligent attention. We think they should look at the facts which we have given in regard to representations in congress from this State and for State officers.

Farmers have acted on Bro. Williams advice, and the lawyers and politicians have only allowed to their farmers, three per cent of the representation, when we had more than 50 per cent of population.

We acknowledge the receipt of the first quarterly report of the Kansas State Board of Agriculture. There are several valuable papers in this report, but the article relating to Sorghum seems most seasonable.

Although sorghum succeeds better in some parts of Kansas than in others; makes larger yields in certain years, and special methods of cultivation produce the best results, yet the crop never fails in any part of the State, with reasonably good cultivation under any system or methods.

The seed of sorghum is small, compared with the size of the plant. The roots penetrate deeply into the soil. The stalk is tall, as compared with its diameter, and is composed of a hard, smooth shell, and a very juicy, pulpy interior.

As a fifth characteristic, the perfected sorghum cane has in its structure very little of the ingredients of the soil. Sugar contains nothing but what is derived from the air and water, and the solid parts of the cane are composed very largely of carbon, derived from what the chemists call "carbon dioxide" of the air.

The best advice which can at present be given as to planting and cultivating sorghum is, First, prepare the land deeply and thoroughly at the time of planting. Second, plant in drills not more than three and a half feet apart, and have canes about six or eight inches apart in the row.

The circular over the signatures of some of the most prominent fruit growers of the Michigan Fruit Belt, should invite the attention of all those interested in fruit culture.

It is not necessary that farmers neglect their farming business in order to take part in politics. The successful farmer sees to it, that he has good teams, and employs only good, capable men to drive them.

What we have said is only in line with what we have been saying in the last half dozen issues of the VISITOR.

What we have said is only in line with what we have been saying in the last half dozen issues of the VISITOR.

We are in receipt of a butter-mold, the first of his make, from Mr. Levi Wood, of Richland, Michigan. It has a familiar look as we saw hundreds of them when in California four years ago.

By a line from Bro. Whitney, we learn that he is again established in his old business at Muskegon. He writes that he shall open his Green House May 1st, and be prepared to fill all orders for plants etc, from a choice selection that he has on hand.

Farmers' Institute and other Matters.

From the printed description I received of the farmers' meeting at Vicksburg it must have been a very enjoyable and profitable gathering; but cannot these meetings be made more so in the future by defining the object to be "How to make farming more remunerative?"

What treatment the different soils require to be the most productive, what kind of implements to use, and how to procure them without paying all the profits of the farm, the best horses to raise for the farmers' use, the most profitable cattle, sheep and hogs and how best to care for them; after this how their products can be marketed at the least expense, so as to compete with the cheap lands west and north.

Papers, however learned, on the "Rise and Fall of the Roman Empire," including a discussion of the tariff question according to the democratic standpoint seems out of place at these meetings, unfortunately for the country, too many vital questions are used in the interest of party, such as the liquor question, the currency and the tariff. This is all wrong.

It seems to me that we are doing all that can reasonably be required of us when we receive so large a number of their surplus population every year, furnishing them employment and homes, almost free of cost, (Take the case of our own state. We go so far as to employ a commissioner of emigration who points out to the poor immigrant where he can find the cream of our unoccupied lands to despoil it of its valuable timber, that the more settled portions of the state will soon feel the want of.)

No, no, self preservation is the first law of nature. Let us then encourage our own manufactures so far as we have the material; and where we have not let us take from those other countries with which we can exchange commodities.

Many false statements are made by comparing the price that an article can be bought for in Europe and then adding the tariff to show how much more we pay for the same article made here than we should have to pay if we had free trade, when the reverse is frequently the case.

The fruit prospects thus far, are of a favorable character, with the exception of blackberries. The severe frost on the night of the 17th of September last, seriously effected Mammoth, Chester, and Kittatiny; killing the canes almost to the ground.

We need not go out of our own state to realize the benefit our people derive from the manufacture of one single article, that of iron. Go to Elk Rapids and Iron-ton, on Pine Lake, in Charlevoix Co., and there learn the benefit those iron works are to that part of the state, and also to numbers of other places where the pig iron is reduced to a more refined article, and so on through all the different processes before it reaches the uses to which it is applied.

In reducing the ore to pig iron a very large quantity of wood is required, and they use that portion of the forest that is of but little value for anything else. Pine Lake is said to have over one hundred miles of coast,

Communications.

PLUCK AND PRAYER.

There wa'n't any use o' fretting, An' I told Obadiah so, For we couldn't hold on to things, We'd just got to let 'em go.

To be sure the barn, was' most empty, An' corn an' potatoes so'ter, An' not much of anything plenty an' cheap.

But laws! if you only heard him, At any hour of the night, A prayin' out in that closet there,

To me he said mighty little Of the 'horny folks we try', But at least a dozen times a day

But I am that way contrary That if things don't go just right I felt like rollin' my sleeves up high

With the point of a sambric needle I drove the wolf from the door, For I knew that we needn't starve to death

But I said to myself in a whisper; "God knows where His gift d-cends; An' tain't always that faith gets down

What Do They Mean.

Mr. Editor:—In the November 1st number of the VISITOR in the postal jottings, C. M. B. asks a few questions and in the 3d inquiry he asks what do Grangers mean when they talk something like this.

The men who established our nation gave to succeeding ages all the blessing and privilege of political and religious liberty and to-day it is our duty to hand down to posterity that which has been left in our care unimpaired.

To-day the two great contending political parties are rallying their forces for the presidential contest. In the heat and hurry of a national campaign everything else is absorbed by what they call questions of great importance.

to work and just a little too honest to steal and too proud to brag unless it is for cakes which he would do with sang froid enough to make a Sioux Indian turn pale with envy.

Secretary of Groveland Grange, No. 143.

The "Grange Visitor" of the Future—A Few Reasons Why it Should be the Best Paper Ever Offered to the General Public.

It being the representative organ of the profession upon which all other professions must really be dependent, its editor should be a Solomon, the wisest man on earth, and the best way to make him such is for

What would our universities and colleges be worth without the primary or preparatory course? What would or could the national or state Granges accomplish without the subordinates?

Now, with all the county papers, representing the interests of everything and everybody excepting the farmer, and depending largely upon us for their financial support, it would argue a moral and intellectual weakness too lamentable for comment, were we to admit our inability to properly conduct or support a local paper.

Michigan patrons should form clubs and secure their binding twine as near to first hands as possible. The present price of wheat will not warrant reckless expenditure for supplies among wheat growers.

We have acted as business agent for this State for the past ten years, our only respite from business is during the busy season of harvest, then patrons here gradually adjourn their meetings until after the busy season is over.

We have no objection to a modest advertisement, but when it takes the great portion of a newspaper page for one or two parties to croak their goods and wares in, when but a small percent of the readers live within trading distance: it may prove profitable to the VISITOR but makes mighty poor reading for the intelligent Granger.

EDWARD MARSH, Berrien County.

The Evils of Freight Discrimination and the Remedy.

Bro. Cobb:—The Western Transportation Company line of lake boats have March 1st gone into the hands of Vanderbilt as the Western Transit Company, with H. Rutter, (President of the New York Central), as its President.

The Tallest Trees in the World.

It is usually considered that this epithet belongs, par excellence, to the famous "Big Trees" in California, variously known by the names of Wellington or Sequoia. These are, however, far surpassed in height, and probably also in the total amount of timber in a single tree, by the real giants of the vegetable kingdom, the noble gum trees of the genus Eucalyptus, which grow in the Victorian State Forest, on the slopes of the mountains dividing Gipps Land from the rest of the colony of Victoria.

The land of England has ruled it for 600 years. The corporations of America mean to rule it in the same way, and, unless some power more radical than that of ordinary politics is found, will rule it inevitably.

Bro. Cobb:—We have been talking a little in our Grange upon the road question, and we have a few questions to ask, v. z.: What kind of a farmer would make a man pass for that would select his foreman without once considering his fitness for the place?

Do you think that railroad would be first class, and yet this would be ahead of our plan of road making. In our town there are thirty-three districts and as many overseers, with thirty or forty miles of road, and 1,500 day's work to do.

Mr. Editor, if any of these rambling thoughts will call out something good from the many who are much better at quill driving than the undersigned we shall be content.

It is usually considered that this epithet belongs, par excellence, to the famous "Big Trees" in California, variously known by the names of Wellington or Sequoia. These are, however, far surpassed in height, and probably also in the total amount of timber in a single tree, by the real giants of the vegetable kingdom, the noble gum trees of the genus Eucalyptus, which grow in the Victorian State Forest, on the slopes of the mountains dividing Gipps Land from the rest of the colony of Victoria.

The land of England has ruled it for 600 years. The corporations of America mean to rule it in the same way, and, unless some power more radical than that of ordinary politics is found, will rule it inevitably.

Mr. Vanderbilt says he has more faith in good railroad stocks, than in "Governments." Yet he sold "lots" of the first to invest in the last.

The Happiness of a Family, And prosperity, also, depends on the health of a mother. She should maintain her health, and correct any monthly difficulties, or uterine weakness by using Zo-Phora Woman's Friend. See advertisement in another column.

Singer Sewing Machine advertisement with image of the machine and price \$15.

YOUNG MEN AND WOMEN Can save money by attending the KALAMAZOO Business College.

German Horse and Cow POWDERS advertisement with image of a horse and text describing the product's benefits.

OUR SOIL PULVERIZER advertisement with image of the machine and text describing its use for soil preparation.

Fish's American Manual of PARLIAMENTARY LAW advertisement with text describing the manual's content and price.

PATENTS advertisement with text describing patent services and contact information for Lucius O. West.

Homes in Texas and Arkansas advertisement with text describing land opportunities and contact information.

ACME CREAMER and BUTTER COOLER advertisement with image of the machine and text describing its features.

FENNO & MANNING, Wool Commission Merchants advertisement with text describing their services.

THE DINGEE & CONARD CO'S BEAUTIFUL EVER-BLOOMING ROSES advertisement with text describing the roses and their availability.

DEREDICK'S HAY PRESSES advertisement with image of the press and text describing its benefits for hay processing.

FOR SALE AT A BARGAIN advertisement for Jersey Cows, Bull and Heifer Calves.

KING'S HAY CARRIER advertisement with image of the carrier and text describing its features.

Most Liberal Premium Offers Ever Made advertisement with text describing the offer and contact information.

JONES OF BINGHAMTON, The State Agricultural College advertisement with text describing the college's offerings and location.

MICHIGAN CENTRAL RAILROAD DEPARTURE OF TRAINS FROM KALAMAZOO advertisement with a detailed train schedule table.

L. S. & M. S. R. R. KALAMAZOO DIVISION TIME TABLE advertisement with a detailed train schedule table.

GRAND RAPIDS & INDIANA R. R. Passenger Time Table advertisement with a detailed train schedule table.

Advertisement for a business or service with text and contact information.

Advertisement for a business or service with text and contact information.

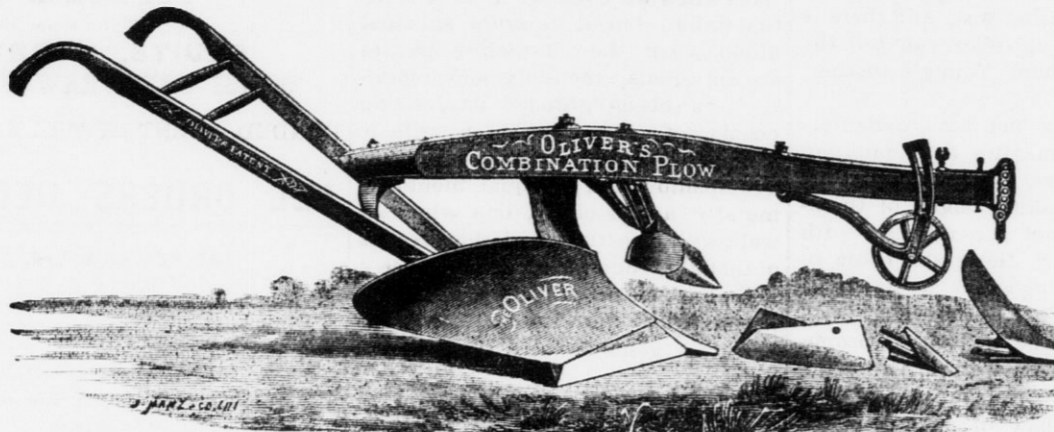
Advertisement for a business or service with text and contact information.

Advertisement for a business or service with text and contact information.

Alabastine. Is the only preparation based on the proper principles to constitute a durable finish for walls, as it is not held on the wall with glue, etc., to decay, but is a Stone Cement that hardens with age, and every additional coat strengthens the wall. It is ready for use by adding hot water, and easily applied by anyone.

How Watch Cases are Made. A plate of solid gold 14 1/2-10 karats fine is soldered on each side of a plate of hard nickel composition metal, and the three are then passed between polished steel rollers. From this plate the various parts of the cases—backs, centers, bezels, etc. are cut and shaped by dies and formers. The gold is thick enough to admit of all kinds of chasing, engraving, and engineering. The composition metal gives it needed strength, stiffness and solidity, while the written guarantee of the manufacturers...

OUR LATEST COMBINATION PLOW. OLIVER'S COMBINATION PLOW.



THIS PLOW IS THE LATEST PRODUCT OF THE OLIVER CHILLED PLOW WORKS, and combines more points of merit in one implement than any other plow heretofore placed on the market. It has a reversible wing and point, making a complete reversible self-sharpening share, and can be fitted with a combination of steel and chilled parts, or with either metal alone.

Oliver Chilled Plow Works, SOUTH BEND, IND., apr 31. Call on your dealer and see the plow, or address

The Cooley Creamer. Saves in labor its entire cost every season. It will produce enough more money from the milk to pay for itself every 90 days. It is the only Creamer or Milk Can which can be used water sealed or submerged without injury.

Clover Leaf Can FOR THE Cream Gathering System. THE CHEAPEST AND BEST. Has the latest cooling surface. It is the most successful cream raiser and gives the best satisfaction of any can now in use. Patent allowed. Send for price list.

PATRONS IN MICHIGAN! You can Save Money by joining the Wisconsin State Grange in a co-operative purchase of Tea, Coffee, Barbed Wire, and many articles bought in large lots at corresponding reductions. We have a flourishing agency just across the lake in Milwaukee, with low rates of freight via Detroit or Ludington Lines.

MONARCH HORSE HOE AND CULTIVATOR COMBINED. For Hoeing & Hilling Potatoes, Corn, Onions, Beets, Cabbages, Turnips, &c. SENT ON 30 Days' TRIAL.

SEEDS TO P. of H. AT 20 PER CENT DISCOUNT. Being a fruit grower and a Patron I will supply Patrons of Husbandry with fresh seed direct from my SEED FARM at 20 PER CENT DISCOUNT from catalogue prices. Send me a trial order and test my seeds. Buy of the grower and save the profit of the middleman. CATALOGUE SENT FREE.

DAIRY QUEEN CHURN. The easiest Churn to run in existence, requiring but one-third the labor of any other Churn made. Worked by hand or treadle. As easy to clean as a butter tray. A success with wind-mill power. Giving the best of satisfaction. Every Churn guaranteed. Send for Price List.

PATENTS Hand-Book FREE. R. S. & A. P. LACEY, Patent Attys., Washington, D. C.

CHAMPION CABINET CREAMERY. Awarded Silver Medal at Provincial Exhibition, Toronto, Ont., Sept. 1883. First Premium and Medal. Toronto Industrial Exhibition, Toronto, Canada, September 1883. Has taken the first premium at the State Fair in nearly every Western State. Raises the most cream with least labor. Makes the best butter. Is made of the best material. A great number in use. All sizes for factories or dairies. Send for Illustrated Circulars. Dairy Implement Co., Bellevue Falls, Vt.

IT WILL PAY YOU. If you run a Flour or Reaper, to purchase a POWELL & DOUGLAS, Waukegan, Ill. Manufacturers of Wind Mills, Pumps, etc. It will pay you if you want to handle a reliable sickle grinder and one that will sell at reasonable prices, to handle a BOSS. More Boas Sickle Grinders are sold every year than all others made. Send for Price List and Catalogue. Address: POWELL & DOUGLAS, Waukegan, Ill. Manufacturers of Pumps, Windmills, etc.

IT WILL PAY YOU. If you run a Flour or Reaper, to purchase a POWELL & DOUGLAS, Waukegan, Ill. Manufacturers of Wind Mills, Pumps, etc. It will pay you if you want to handle a reliable sickle grinder and one that will sell at reasonable prices, to handle a BOSS. More Boas Sickle Grinders are sold every year than all others made. Send for Price List and Catalogue. Address: POWELL & DOUGLAS, Waukegan, Ill. Manufacturers of Pumps, Windmills, etc.

Burlington Route. CHICAGO, PEORIA & ST. LOUIS, THROUGH THE HEART OF THE CONTINENT BY WAY OF PACIFIC JUNCTION OR OMAHA TO DENVER, and all points in the Far West. Shortest Line to SAN FRANCISCO, and all points in the South-West. And all points in the South-West. TOURISTS AND HEALTH-SEEKERS should not forget the fact that Round Trip tickets at reduced rates can be purchased via this Great Through Line, to all the Health and Pleasure Resorts of the West and South-West, including the Mountains of COLORADO, the Valley of the Yosemite, the CITY OF MEXICO, and all points in the Mexican Republic. HOME-SEEKERS should also remember that this line leads direct to the heart of the Government and Railroad Lands in Nebraska, Kansas, Texas, Colorado and Washington Territory. It is known as the GREAT THROUGH CAR LINE of America, and is universally admitted to be the Finest Equipped Railroad in the World for all classes of Travel.

THE NIAGARA FALLS AIR LINE



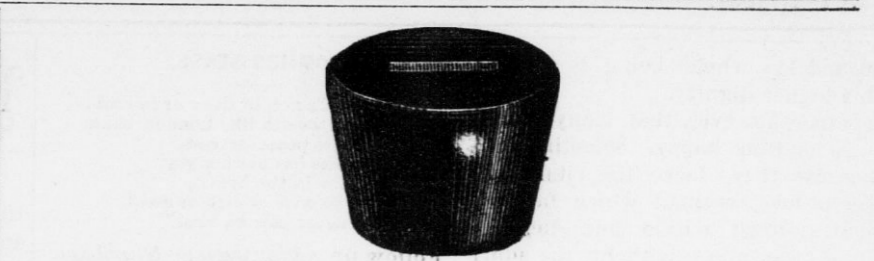
CHICAGO & GRAND TRUNK RAILWAY TIME TABLE.

Table with columns for Stations, No. 2 Mail, No. 4 Express, No. 6 Express, No. 8 Pass'g'r., No. 1 Limited Atlantic, No. 3 Express, No. 5 Express, No. 11 Accom. Includes times for various routes like Port Huron, Chicago, Valparaiso, etc.

M. B. CHURCH "BEDETTE" CO., GRAND RAPIDS, MICH. SOLE MANUFACTURERS OF THE "BEDETTE."



Patented June 13, 1882. This invention supplies a long-felt want for a cheap portable bed, that can be put away in a small space when not in use, and yet make a roomy, comfortable bed when wanted. Of the many beds that are in the market there is not one, cheap or expensive, on which a comfortable night's rest can be had. They are all narrow, short, without spring, and in fact not bed at all. While the BEDETTE folds into an small space, and is as light as anything can be made for durability. When set up it furnishes a bed long enough for the largest man, and is as comfortable to lie upon as the most expensive bed.



This cut represents our Miniature Closed PATENT FLOWER POT.

With every purchase of \$5.00 or more in Clothing, Hats, Caps and furnishing goods we give one of these Pots. On breaking the same will be found a card giving the holder one of these presents.

ELEGANT UPRIGHT PIANO. STYLISH CARRIAGE HORSE, FINE TOP BUGGY. 1 SLENDID 8 PIECE BEDROOM SET.

FAMILY SEWING MACHINE. Caire, Toilet, Sewing Tables, Fancy Chairs, Toilet Cases, Brushes, Fine Shirts, Watches, and hundreds of other handsome presents. Remember you receive your present right after your purchase.

THIS IS NO LOTTERY. But a fair legitimate scheme

We guarantee to sell goods as low as can be bought anywhere in the town. Men Suits \$5.00 to \$30. Boys Suits \$2 to \$18. Men's Hats 35c. to \$4. Boys Hats 25c. to \$2.

We sell a good all wool Casimere Men suit at \$5.50 This is cheap at \$10.00. We warrant all goods to turn out satisfactorily.

STAR CLOTHING HOUSE, GRAND RAPIDS, MICH. Mention GRANGE VISITOR.

People who may reside at so great a distance from Grand Rapids that they cannot conveniently come to the city, can avail themselves of the most extensive and varied stock of DRY GOODS AND CARPETINGS

DRY GOODS AND CARPETINGS

of every description to be found in Michigan, simply by writing us. Samples of nearly all kinds of goods can be sent by mail.

All orders strictly attended to, and any goods sent, not satisfactory, can be returned, and the money paid for the same will be refunded.

SPRING & COMPANY, GRAND RAPIDS, MICH. (Mention the Visitor.)

Special Notice

We are the Original Grange Supply House, organized in 1872 to supply the consumer direct with all classes of Goods at Wholesale Prices, in quantities to suit the purchaser. We are not purchasing agents or commission men who buy their goods after they get an order. We buy from first hands in large quantities and carry in stock all the goods we handle, embracing Dry Goods, Clothing, Boots, Shoes, Hats, Caps, Fancy Goods, Hosiery, Gloves, Underwear, Watches, Clocks, Jewelry, Silverware, Sewing Machines, Hardware, Tinware, Guns, Revolvers, Fishing Tackle, Crockery, Harness, Saddles, Trunks, Groceries, and in fact nearly Everything that is required in the House or on the farm.

Our Buyer's Guide is issued in March and September of each year and will be sent free to any address upon receipt of postage, 7 cents. It is a book of 216 pages, 8 1/2 x 11 1/2 inches, with over 3,300 illustrations of articles we handle, also prices and descriptions of all the goods we sell. Invaluable as a book of reference. Let us hear from you. Respectfully, MONTGOMERY WARD & CO., 227 & 229 Wabash Ave., Chicago, Ill.

LANG'S LIVE SEEDS. NORTHERN GROWN, THOROUGHLY TESTED. Flower, Vegetable and Field. 20,000 Catalogues free. Send names of your friends. For Sale by Furniture Dealers Everywhere.

