

GOLF COURSE
SUPERINTENDENTS
ASSOCIATION
of NEW JERSEY

THE

Greenet Side

Vol. 6 No. 4

August 1983

Dates to Remember

August 8-13, 1983

USGA Junior Girls Championship,
Somerset Hills C.C., Les Stout,
Superintendent

August 15-20, 1983

USGA Women's Amateur Championship,
Canoe Brook C.C., Skip Cameron,
Superintendent

August 23, 1983

The Bedens Brook Club, Jim Gilligan, Host,
District 5

September 21, 1983

Fourth Annual Met Area Team Cham-
pionship, Grossinger's Hotel and
Country Club, Liberty, New York, John
Sauchuck, Superintendent

September 13, 1983

Annual TPC Day, Peace Pipe Golf Club,
Denville, N.J., Ernie and Buddy Rizzio
and Rick Berberich, Hosts

September 27, 1983

GCSANJ Sixth Annual Invitational Tour-
nament, Essex County C.C., John
Schoellner, CGCS, Host, District 2

October 4, 1983

GCSANJ Annual Field Day, Rutgers
University

October 17, 1983

Rumson Country Club, Charlie Cross, Host,
District 7

October 1983

Annual Monroe Invitational. Date and place
to be announced

September - October, 1984

GCSANJ Seventh Annual Invitational
Tournament, Canoe Brook Country
club, Skip Cameron, Host

Putting Green Speed

"Boy those greens were fast"! "The greens don't seem to be holding today, how come? These comments and many others regarding certain characteristics of putting greens are often discussed by golfers.

Is there a so called "perfect speed" for putting greens? I don't think so.

Each golf course has different priorities concerning its greens. Some want nothing but the greenest in appearance. Others want greens that will hold virtually any kind of golf shot. Many golf courses take special pride in the fact that their greens are particularly fast. Some courses maintain their greens as dictated by the sheer number of golfers that trample them every day.

Putting on a green where the ball rolls evenly with good pace is a challenging and enjoyable experience. Achieving this type of surface is all in the hands of the Golf Course Superintendent. Whether the greens are cut at one-quarter of an inch or at one-eighth of an inch, a smooth putting surface may be obtained by using the proper management practices. Vertical mowing, topdressing, aerating, pesticide scheduling, watering practices, and mowing practices when used properly will lend themselves to a smooth putting surface.

The decision is up to the Golf Course Superintendent to decide what is best for the golfers that play his course.

The Golf Course Superintendent must take into consideration the size of each green which in turn dictates the amount of available cupping space, the contours of each green, the amount of play his greens will receive, and the funds available to achieve a quality putting surface.

The above specifics along with the good management practices he chooses to carry out will allow him to decide what will be best for his golfers.

Speaking with many Superintendents the majority seem to enjoy putting on a firm

surface with good pace to it. Yes, firm with good pace. That can be decided by the Superintendent without the use of any mechanical devices. Simply by playing golf on his course once or twice weekly (yes, quite often it is difficult to set aside the time to do so) a feel for how the greens play may be obtained. A lot may be learned from those two rounds of golf per week. Many things are seen while golfing that are not noticed otherwise.

I could go on and on about putting green speed for it is a very fascinating subject.

In summary, the area of turf specially prepared and maintained for putting otherwise known as the "putting green" should be looked upon as not a landing area but as a putting surface. If a majority felt this way the turf and the golfer would be better off for it. C.C.



The Stimpmeter can be a useful tool if utilized properly. Consistency should be your most important commodity when dealing with green speed.

the GREENER SIDE

GCSANJ Newsletter is published six times a year by the Golf Course Superintendents Association of New Jersey, P.O. Box 231, New Brunswick, N.J. 08903.

Ed Walsh, CGCS
Editor

Wayne Foster, Photography
Charlie Cross, Special Projects
Maraliese Goosman, Illustrations

Please address inquiries concerning advertising to:

Ken Kubik, Advertising Manager
489 Millbrook Avenue
Randolph Twp., N.J. 07869



GOLF COURSE SUPERINTENDENTS ASSOCIATION of NEW JERSEY

Cook College - Rutgers University
Box 231
New Brunswick, New Jersey 08903

OFFICERS OF GCSANJ

Bob Dickison, CGCS
President

Bob Ribbans
Vice President

Wayne Foster
Secretary

Ed Walsh, CGCS
Treasurer

Ed Nickelsen
Past President

EXECUTIVE BOARD

Mike Dale
Director, District 1

Glenn Gallion
Director, District 2

Dennis Shea
Director, District 3

John Fenwick
Director, District 4

Charlie Dey
Director, District 6

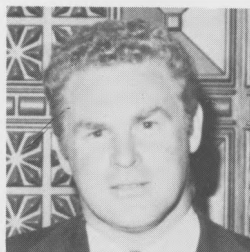
Wayne Ballinger, CGCS
Director, District 7

Chip Pfisterer
Director, District 8

Dr. Henry Indyk
Executive Director

President's Message

Bob Dickison
CGCS



Over the past six or seven months I have written four other President's messages. They have dealt with supporting our commercial members, relations with other groups in golf, the needed changes in our by-laws and membership involvement.

We will always need more membership involvement. Things are improving on this level and hopefully will continue to do so.

Some changes have been made on the by-laws which are helping the association run smoother. We still need to make changes on our districts.

Our relations with other allied groups is ongoing and things are improving all the time.

I know that our members are always in full support of our commercial membership.

Now that we are in the summer it is difficult to think of subjects that need to be written about. Therefore, I hope that everyone's summer is not too hot, too wet, too dry, or has too much disease, too many insects and the POA stays alive.

In other words, I hope everyone has a good summer.

Smith Resigns NGF Post

Frank M. Smith Jr. has announced his resignation as president of the National Golf Foundation.

In office since May 1982, Smith was the Foundation's first paid president after a restructuring created the position.

"The board of directors and I have mutually agreed that my resignation is in the best interests of the Foundation," Smith said. "This is in no way a reflection on the staff of the Foundation. I feel that we accomplished a great many things in the last year and I regret that I won't be a part of what I feel is a bright future as far as the NGF is concerned."

Smith, prior to joining the NGF, served in a variety of executive positions with CBS including president of CBS Sports, senior vice president of the Broadcast Group and vice president in charge of Sales.

The appointment of Sheridan (Joe) Much as acting executive director was announced by Jerry Martin, chairman of the Foundation board. Much, 60, has been director of field services since September 1982, after serving as a field representative of the West Coast since 1968.

MEMBERSHIP APPLICATIONS

GCSAA Membership Applications are available through the Greener Side. Call Ed Walsh, 652-1650.

From the Editor's Desk



Well, it looks like all us paranoid and pessimistic supers were right. We told you Mother Nature was too good to us last year. We told you not to become too relaxed. We told you not to start enjoying yourselves this summer. We told you this year was going to be a real (female dog). But did you listen. Most of you smart, experienced guys did and you're making it. But what about you other guys? Losing some turf? Losing some sleep. Losing some hair (that's why K.K. is in sales). If you are, you can sit back and make all the excuses you want but I have never seen an excuse that brought back grass. Or you can get off your ... (trying to save the ones in the grand canyon) and correct the problems you have. Nobody ever said the business was easy. If it seems like I am being a little too harsh during a time when that's the last thing you want to hear, don't get too upset. There's really only one person I want to read this column.

I guess I am not as paranoid or pessimistic as I thought.

xxx

Last Monday (July 25), I had a talk with our President, Bob Dickison. Bob informed me that his attempts to present a plaque to Dave Pease for his outstanding achievements in the preparation of Hominy Hills for the just concluded USGA Amateur Public Links Championship were disallowed. This plaque was to have been presented at the Championship's closing ceremonies. This is the second such attempt squashed by USGA officials. Jack Martin, then the GCSANJ President, tried to gain a few moments during the 1980 U.S. Open closing ceremonies at Baltusrol for the same purpose.

The reason this time was similar to the one in 1980, the USGA does not want to start something that may embarrass themselves sometime in the future. This thinking is absolutely absurd. Should we stop voting because we elected a poor official? Should we not purchase another car if the last one we owned was a lemon? Should we stop playing golf because our last round wasn't very good? Should my wife and I get a divorce because we had an argument?

The USGA official who made the decision pointed to a situation that was encountered a few years ago with the conditions of one of their championship's courses. Make sure you understand they (or he) were referring to one of the courses they played. Not two or three or four, but one.

The USGA holds 12 major championships

Continued on page 3

The History of Golf in America

The first mention of golf in America was in 1793 when the South Carolina and Georgia Almanac spoke of the formation of a golf club in Charlestown, S.C. in 1786. A careful examination of newspapers in Charlestown during this period suggests that although golf may have been played, the primary purpose of the club was social. It is known that in 1795 a club was formed in Savannah, Ga., however, that club seemed to disappear during the War of 1812 and not restarted. The oldest continual golf club on this continent is the Royal Montreal Golf Club, established in 1873. During the 1870's golf seemed to explode in Canada and at least four other clubs were started. Royal Quebec in 1874, Toronto Golf Club and Niagara on the Lake Golf Club in 1876, and Brantford Golf Club in 1879 all began continual operation during the decade.

In 1884 Russel Monyague, with a group of friends, began playing golf on a course of their own design near Oakhurst, West Virginia. There is also evidence that the game was played in Texas in 1886, Nebraska in 1887 and Connecticut in 1889.

However, as the history of golf is so interrelated with the club idea, these individual occurrences did not really take hold. It seemed for a long time that some individual golfer would go out into a local field, plan and layout a golf course, and he and some friends would play for several years, then they would disband and that was the end of that. One individual who did not take that route was John Reid. Reid, of Scottish ancestry and most familiar with the game in his native land, invited some friends to play golf across the street from his house in Yonkers, N.Y. on February 22, 1888. This was the beginning of the St. Andrews Golf Club of Yonkers, the first documented golf club in the United States.

As Reid and friends played that summer and fall they attracted the attention of many of their neighbors. Soon all were playing the three holes laid out in the pasture. This led to a dinner at John Reid's house on November 18, 1888 at which the club was officially formed. Reid was elected president and John B. Upham was elected secretary. It is primarily due to the minutes kept by Mr. Upham that St. An-

drews at Yonkers is considered the earliest club in the U.S. During the next several years St. Andrews made two moves, first to Grey Oaks, N.Y. and then several years later to Mount Hope at Hastings-on-the-Hudson, where it finally became an eighteen-hole golf course.

Golf saw a tremendous interest during the next several years; by 1895 there were more than 75 clubs operating. In 1894 two different clubs, St. Andrews and the Newport Golf Club both held their own Amateur Championship of the United States. To make it even more confusing, Newport used medal play and St. Andrews used match play. Order was needed in the golfing world of the U.S. and it came in 1894 with the formation of the United States Golf Association. That is for next time. What is important, in a land of vast open spaces and a sport loving population, golf grew and flourished. By 1900 over 1000 golf courses were in operation in America, an absolutely incredible growth had begun.

Next issue: "The USGA, and Golf Moves West"

CREDIT: Mark Curtin, CGCS, Editor of the Bonnie Greensward-PAGCS

From the Editor's Desk

Continued from page 2

each year. If we only go back five years we are discussing 12 tournaments per year, times five years, which gives us a total of 60 championships played on 60 golf courses. (The figure is probably lower because during this period some courses have had more than one championship.) Why should Joe Flaherty then and Dave Pease now be neglected because one course or superintendent didn't meet the USGA standards. Didn't Joe and Dave far surpass those standards? Weren't the Open in '80 and this year's Amateur Public Links two of the most successful events the USGA ever held? Why do you penalize the majority for the faults of the minority?

The most alarming occurrence in the entire situation is the lack of good common sense the USGA gives us credit for. We as individuals, or as a group, know when a good job has been done. We know when one of our constituent's efforts warrant recognition and when one doesn't, we certainly wouldn't be promoting our profession by focusing attention on a poor situation. Please USGA, give us a little credit.

It's incredible to believe but there are still people associated with the USGA who don't think the golf course superintendent is an important part of the game. I have to feel that if Bill Campbell or Frank Hannigan were involved, the decision at Hominy would have been different.



In the North
Fran Berdine

R.D. 1, P.O. Box 331

Pine Bush, N.Y. 12566

Telephone: (914) 361-4105



In the South
Bob Dwyer

Technical Representative

33 Shetland Road

East Brunswick, N.J. 08816

Telephone: (201) 238-5941



BLEND [80] A highly effective wetter & spreader on surfaces, therefore requiring more control in the manner and frequency of application.

BLEND [30] BLEND [37] Mild, culturally compatible surfactants. Our choice for improving the best or worst green or tee. Most effective in mat and thatch. These blends promote thatch decomposition, aid spring greenup of bents, root initiation, color and denseness of turfgrass. Overwinter with surfactants to improve snow-mold and desiccation problems.

SURF-SIDE [SA] Nonionic spray adjuvant.

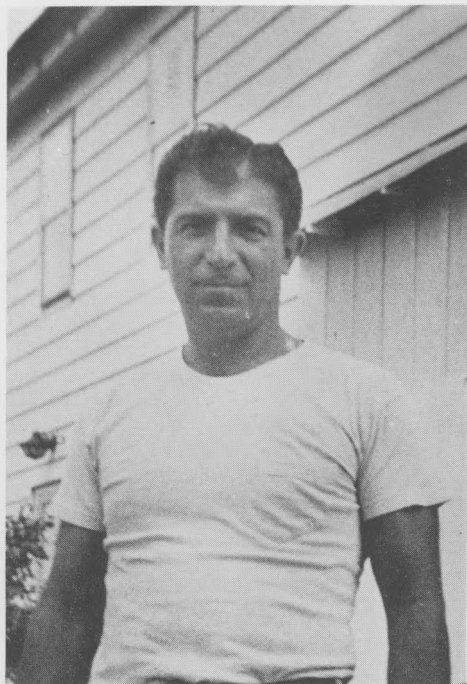
**SPREADABLE
GRANULAR #37**



MONTCO PRODUCTS CORPORATION
BOX 404 AMBLER, PA. 19002

MEET OUR PATRONS

Sam Leon



Sam Leon

Sam Leon produces some of the finest mineral grown, premier certified sod in the metropolitan area out of Frenchtown, N.J.

Sam was born in Glen Ridge, N.J., but was brought up on a farm in Flemington, N.J. He graduated from Flemington H.S. and later served as a non-commissioned officer and paratrooper in the 11th Airborne. After WWII, Sam established himself as one of the very few chick sexers in the country. Sam has now been growing sod for over 15 years. His farm features Bluegrass blends and Fescue mixtures.

Irene is Sam's hard-working wife and they have one daughter, Diane, and two grandchildren, Jamie and Chrissy. Sam has been on the Board of Directors of the New Jersey Turfgrass Association since 1976. He is a member of the Cultivated Sod Producers Association of America and serves on the Board of Directors of the Delaware Valley Cooperative.

Sam was mayor three of the four years he served on the Kingwood Township Committee. He also has served on the Kingwood Township Board of Education for nine years, it's President for five years. Sam has been a member of the Elks for thirty years.

Leon's Sod Farm has been a patron of the GCSANJ newsletter since its rebirth in 1978. We wish him and his lovely wife continued success and good health.

Ken Kubik

Need to Buy

One small flail mower in good condition. Must fit on small Ford tractor. Contact Ed Walsh, 652-1650.

Ask: Willet Wilt



Willet Wilt has taken time off from his busy schedule as Caddy Master-Club Cleaner at Mazda Brook C.C. to answer agronomic questions from our astute readers.

Q: The golfers at my course are complaining that my greens are too hard and therefore aren't holding their shots. What should I do? S.M., Metropolis

A: University tests have shown that the grass with the best holding power is Crown Vetch. Why not plant that on your greens? W.W.

Q: What is this I heard about a Greensakeep Olympics? T.P., Hoboken, N.J.

A: The first Annual Greensakeep Olympics is to be held this fall at Maplewood C.C. Some of the featured events are: "Hide and Seek" in which your crew hides about the golf course and then the superintendent has twenty minutes to see how many he can find. Another is "Search and Destroy" in which you put your

rough cutter on a set of mowing units and he attempts to run over as many sand trap rakes and tee markers as he can in 30 minutes. Getting off the mower to move a rake or tee marker results in automatic disqualification. These are just some of the great events the Greensakeep Olympics will have. W.W.

Q: At the next GCSANJ meeting at the Bedens Brook Club, would you suggest I get a golf car or a caddy? C.U., Death Valley, N.J.

A: A caddy, definitely, because I have yet to see a golf car that can kick your ball out from under a tree. W.W.

The first annual GCSANJ Garage Sale will be held this year at the Rock Spring Club. For fifty dollars (\$50) you get booth space to sell your peers all that junk you have laying around your golf course that isn't bad enough to throw away and not good enough to keep. Please send cash (no checks) to reserve your space to Willet Wilt, c-o Ken Kubik, P.O. Box 336, Mt. Freedom, N.J. 07970.



Serving Northern New Jersey
for 60 Years

FULL SERVICE COMPANY

Serving You With:

- PRUNING
 - REMOVALS
 - BOLTING & BRACING
 - SPRAYING
 - CAVITYWORK
 - insect control
 - FERTILIZING
 - disease control
 - STUMP REMOVAL
 - LIGHTING PROTECTION
 - TREE CONSULTANTS
- (914) 948-0101**

Turf Pro 84®
Every inch
a Professional.



TORO
THE PROFESSIONALS
THAT KEEP YOU CUTTING.

The Toro® Turf Pro 84 is an all hydraulic triplex that gives you the right clip for the right height of cut and type of grass. All three reels and wheels are hydraulically powered, reducing maintenance time and cost. Reels have independent suspension, providing a better quality of cut. With movement of a single pin, cutting height adjusts from 3/8" to 2 1/2". Front rollers, grass catchers and deluxe seat are optional.

STORR TRACTOR COMPANY

3191 U.S. Highway 22
SOMERVILLE, N.J. 876
(201) 722-9830

CHIP SHOTS

Mel Summer, formerly superintendent at Knob Hill C.C. in Heights town, has taken a superintendents job in California. Good luck Mel!

Terry Stanley, formerly assistant superintendent to Dan McGlynn at Suburban C.C. is the new super at Knob Hill. Best of luck Terry!

Les Carpenter Jr. of Picatinny G.C. was married this spring to Dana. The reception was held at the club.

Todd Polidor's (of Heritage Hills) son Duke was also married this spring.

Tom Zimich became a three time grandfather in less than six months recently.

Joe Flaherty is recuperating from an operation for a perforated ulcer. Get well soon Joe!

Pat Campbell Sr. is going back into the hospital for an operation.

Rumor has it that Bob Dickison's Cocus Plumosa has produced a new frond. Keep up the good work Bob!

Nat Binns has been retained as the superintendent at the Hopewell Valley C.C. He replaces Tom Hamulak who has taken a job as golf course superintendent at the Hiwan G.C. in Evergreen, Colorado.

Ralph McNeal, the former assistant to Bob Ribbans at Fairmount C.C. has taken the job as golf course superintendent at Harkers Hollow C.C.

Gary Stedman of Battleground C.C. is in the process of automating his irrigation system.

Charles Edgar has done major rebuilding of some greens and tees at his Green Acres C.C. course.

Angelo Petraglia, super at Navesink C.C. has been playing some great golf as of late. He finished seventh in the State Amateur Championship held at the Plainfield C.C. He qualified for the U.S.G.A. Public Links Championship to be held at Hominy Hill Golf Course July 11th-16th. His qualifying score of 146 (75-71) made him one of the nine golfers that qualified in regional qualifying held at the Howell Park Golf Course. In the first round of qualifying for the U.S. Open Ange shot a two round score of 147 which advanced him to the next round. He was the only amateur in the state to accomplish this. He and Mike Hocho won the NJGCSA two man team championship held recently at the Essex Fells C.C. All this came after Angelo won the Winter League championship at the Old Orchard C.C. shooting a fine 72. Not even the pros scored lower that day. Thats quite a list of accomplishments. Congratulations Angelo! Oh by the way Ange, do you manage to find time for work.

Charles Sweisberger has taken over the job as golf course superintendent over the three Essex County Park System courses.

Jim Goerlich has returned to McCrackens Funeral Home as Turf Maintenance Director. He and his lovely wife are proud parents of a fine baby girl.

Tim McAvoy of Fox Hollow C.C. was married this past spring. Congratulations Tim!

Even with the torrential rain storms, Wayne Remo and his crew produced a quality golf course for the June NJGCSA meeting. The only way you could have gotten a bad lie was if you hit over the hedges and landed on Eagle Rock Ave.

Dave Pease has informed the Greener Side that the action at the San Juan Beach Club in Colts Neck has been wild and crazy the past few weeks. Dave is going to talk to Beach Club Manager Gene Mack to set up an outing some time soon.

Food Prices

The price of food would increase from 50 to 75 percent without the use of agricultural chemicals.

In the U.S. we now spend 13.8 percent of our gross income for food (or 16.6 percent after taxes). This compares to:

- 60 percent in China
- 40.9 percent in Mexico
- 31 percent in the Soviet Union
- 21.5 percent in Japan

In 1951, Americans spent 23 percent of their budget on food.

TREES OF THE MONTH

Bald Cypress (Taxodium Distichum)

The Bald Cypress is a large needle-bearing tree that loses its foliage each autumn. This low maintenance tree will grow in swampy areas, even with some standing water. Its natural range is from New England to Florida. If you have a super wet area on your course and have a hard time growing trees, then plant a Bald Cypress.

American Yellow-Wood (Cladrostis Lutea)

The Yellow-wood is a medium-size rounded tree with compound leaves and light grey bark. In early June it has large racemus of fragrant white flowers. This is one of the forgotten trees that should be planted more often.

Willow Oak (Quercus Phellos)

The Willow Oak is a medium size tree that grows somewhat like a pin oak. The leaves are the size and shape of a willow leaf which makes it a low maintenance tree. Willow Oaks are easily transplanted in the spring and will grow in reasonably wet soil. These facts make it a good tree for wet areas of a golf course.



Pumps for Water

Vertical Turbine Horizontal End Suction In-Line

SOLD AND SERVICED BY:

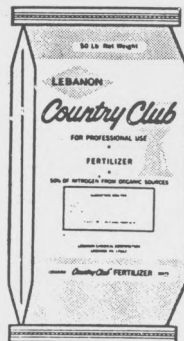
Artesian Pumping Systems

A DIVISION OF ARTESIAN WELL & EQUIPMENT CO., INC.

12 ROCHELLE AVENUE
ROCHELLE PARK, N.J. 07662

PETER J. MAURO

201-845-7080 OFFICE
201-391-5336 HOME



COUNTRY CLUB greenskeeper Products

for GOLF COURSES
and PROFESSIONAL USE

LEBANON CHEMICAL CORPORATION
201-329-4011



Tip

USE REGULAR

Don't use lead-free gas to power your mower, tiller or chainsaw. Use "regular" or leaded gas only. The lead in gasoline acts as a lubricant somewhat like graphite. Leaded gas prevents valve troubles - a common occurrence when non-leaded gas is mistakenly used in air-cooled engines with their much higher than auto engine operating temperatures. Car engines are liquid cooled and run at lower temperatures.

Even so, those using non-leaded fuel have specially engineered valve components that do not need the lead content to keep them functioning without excessive wear and heat failures.

PARTAC TOP-DRESSING

FOR GREENS THAT'LL SUIT
YOU TO A TEE!

The Standard of Excellence in Golf Course Top-Dressing. Heat Treated, Made to the Most Modern Specifications, and pH Balanced. Also Available: High-Sand Top-Dressing, Tee Mix Blends, and Construction Mixes for Tees & Greens.



DISTRIBUTED IN N.J. BY:

FARM & GOLF COURSE SUPPLY
Howard Scott, 215-483-5000

FISHER & SON
Frank Fisher, 215-644-3300

GRASS ROOTS TURF PRODUCTS
Ken Kubik, 201-361-5943

GREEN HILL TURF SUPPLY
Jim Roach, 201-462-2349

PRO-LAWN PRODUCTS
Andy Mulick, 201-967-9124
Ingrid Kern, 215-750-1732

TURF PRODUCTS CORP.
Ernie Rizzio, 201-263-1234

Charting the Course

Speed, Slope and Skill

by Dr. Michael Hurdzan, Golf Course Architect

In a 1929 issue of Golfers Magazine, I ran across an article where a British golf pro had built a putting machine to demonstrate that, statistically, holing a ten-foot putt was more luck than skill due to surface imperfections of greens. He was lobbying to increase the size of the cup so that a putt could be made by the putting machine within a predictable probability. What he was asking for was to make putting a test of skill and not a matter of luck. Fifty years later, I too, am campaigning for making putting a skillful endeavor, but not by increasing the cup size.

Given the vastly improved surface conditions of the average green in 1983, I have almost no doubt that the putting machine could consistently hole putts into the standard 4 1/4" hole; but ONLY on a perfectly flat green. This is because there is only one determining factor for a flat putt and that is line. The speed of the ball can vary greatly and still have the putt drop. But as soon as one introduces "break" into the putt, there begins a very complex relationship between speed and break, that is directly dependent upon, and proportional to, the slope of the green. On mild slopes the factors are not as critical, but as one increases the slope, the situation becomes an extremely complex matter of vector physics. The amount of break played is dependent upon the speed of the ball and vice versa. Given much slope to the green, I would seriously doubt if the putting machine could consistently hole putts, for the steeper the slope and the faster the green, the more luck, rather than skill, becomes the dominant force in putting.

The point is, if putting is to be a skillful pursuit, then speed and slope must be matched. Golf course architects determine the slope, and the golf course superintendent determines the speed. These two people must understand what the other is trying to achieve, and not violate the basic

tenets of fair and skillful golf. To emphasize my premise, let me give you two well-documented examples of where these tenets were violated.

The examples involve two of the greatest architects of the past, A.W. Tillinghast and Dr. Alister MacKenzie, two of the most famous golf courses in the world, and 150 of the best players of our time. The first example is the 1974 U.S. Open at Winged Foot, where greens were shaved down to cutting heights that were unimaginable by the golf architect when the course was built in 1923. Because Tillinghast was such a skilled designer, he perfectly matched the slope of the greens with the speed of the greens as determined by the prevailing maintenance practices of that time. The other example is the 1982 Masters at Augusta national, where again the premier golf architect, MacKenzie, perfectly matched the slopes of the greens with the anticipated speed of the Bermudagrass turf. At Augusta, the switch to bentgrass on slopes designed for bermuda produced the same results as at Winged Foot: putting became luck, not skill. In both instances, I watched as the best players in the world, three and four putted from 10 to 12 feet away. To my mind such situations are more emblematic of Russian roulette than golf.

Citing these examples is not meant to tarnish the image of the victors, for they indeed may have been the most skillful players on each course for that particular tournament. But one cannot help wondering if our fetish to protect par has not led us to maintain facilities that separate players on some other basis than skill. To avoid such miscarriages of intent requires only a little intuitive thought about what is the optimum speed for your particular greens, and then adjusting your maintenance procedures to realize that goal. Unless your greens are perfectly flat, I would throw away the Stimp meter, and rely on your own good judgement by playing your course as often as possible, talking with your members and using common sense. If both the golf course architect and superintendent understand the design intent and probable maintenance while remembering the 3-S's — speed, slope and skill — golf will be better for it.

CREDIT: Golf Course Management Magazine.

EDITOR'S NOTE: Golf Course Management is published by the GCSAA. It is a monthly publication that is sent to all GCSAA members and green chairmen of members. Articles like this one appear on a regular basis and help make it the very best publication in the turf management industry. If you are not a member of the GCSAA, give some thought to joining. It may be the best investment you will make in your professional career.

891-1764

WYCKOFF, N.J.

FULLY
INSURED



QUALITY
SERVICE

JAMES DAVENPORT

BS IN FORESTRY • U of MAINE
• NJ CERTIFIED TREE EXPERT

401 K Deferred Salary Plan

The 401 K Deferred Salary Plan has come of age during the fall of 1981. This qualified salary reduction plan allows employees to take a phantom pay cut. This phantom pay cut will lend itself to a better W-2 report on his or her gross income. By lowering the taxable income, the employee will be saving on his state, local and federal income taxes. The deferred salary reduction plan allows a worker to take 2 percent to 15 percent off the top of his wages and treat it as a company contribution to a profit sharing or savings plan.

Like any plan, this 401 Deferred Salary Plan has some drawbacks:

1. When a club or business wants to instrument this plan, all of the employees of said club must use the same percentage of deferred salary. For example, if the number is 10 percent, then the same percentage must be allowed for everyone. The IRS will be meeting in April or May, 1982 to make final ruling covering the highly compensated employees of which the golf course superintendents would be classified.

For example: an individual who earns \$25,000.00 a year, married and has two children, assuming the individual contributed 5 percent of the 401 K Plan and using the 1981 federal tax rates, his take home pay would be \$20,290.00 using after tax dollars. Using pre-tax dollars, take home pay would be \$20,619 and still have a contribution of \$1,250.00 to the 401 K Plan.

With the 401 Deferred Salary Plan, one could possibly put away a lot more money for retirement in a shorter period of time. From the research, I understand a person could use the 401 K Plan and IRA retirement account at the same time. This would depend on the person and the amounts one would want to put away, so get your club involved.

With the higher pay the superintendents are receiving today, everyone should be checking out all avenues. The 401 K could be a super program for the whole club operation. The more we hear about social security and the future of the social security program, the more I am convinced that I should set up my old age retirement programs.

The 401 Deferred Salary Plan has some very good points of interest:

1. The money can be used during a financial crisis (no penalties). Money can be withdrawn for retirement before the age of 59½. The IRS has not stated what it considers a hardship. At most companies, an employer committee will determine what it constitutes hardship on a case by case basis.
2. The monies are available when the employee retires, quits or is fired.
3. The money can be taken out in one lump sum and then can use the special 10 year forward averaging. With an IRA account you can only use regular income averaging.

The 401 K Deferred Salary Plan should cause no problems to the company employees or the company, most experts say.

One of the problems that could arise in the anti-discrimination test. The IRS states that the top third of the employees, the highest paid employees in the company cannot defer more than the lower two thirds of the employees paid. In this case if a plan doesn't meet the test or qualify, an individual could end up paying the taxes that would otherwise have been due on the deferred amount. Social Security taxes—if an employee's income after deferred salary plan is less than the taxable wage base (\$32,400.00) the employee may lose some of the benefits from social security.

Here are some examples of income that is not taxable:

1. Accident and health insurance proceeds, unless they were reimbursement for medical deduction claimed in previous year.
2. Casualty insurance proceeds, as long as they do not exceed the basic cost of the property.
3. The first \$5,000.00 in a death benefit paid by employer upon death of an employee.
4. Up to \$1,000.00 annually in interest received from an insurance company upon death of a spouse, if survivor has elected to receive the insurance proceeds on installments.
5. Life insurance proceeds.
6. Scholarships and fellowship grants.
7. Gift, inheritances, bequests.
8. Workman's compensation disability income.

Ken Goodman

Credit: Divots, MVGCSA

OZONE OOPS

The environment handwringers sell fear, as we have often pointed out. When the fear bandwagon starts to roll, these would-be "world savers" ask for federal grants to prove the fear is justified. In such cases, wild estimates nearly always replace scientific fact.

A good example: In recent years, it has been wildly believed that as much as 30 percent of the nitrogen applied to crop land escapes as nitrous oxide. One couldn't ask for a more ideal scenario for weaving a circle of fear. Obviously, the potential exists for surrounding and choking the world, and fertilizer is to blame.

Why? Because those God-awful fertilizer companies sell more and more of the stuff despite what we can all remember from school - in the stratosphere, nitrous oxide breaks down to form nitric oxide. Nitric oxide can, as TV has taught everyone by now, strangle the earth's ozone layer, which is our shield from ultraviolet radiation.

But there's more to fear. Cancer can result from ultraviolet radiation. And cancer has become the all-American, apple-pie way to sell fear. And what is spewing forth this fear but the agrichemical industry.

Oops, no one had asked for scientific evidence. Fortunately, we now have evidence. After five years of study, USDA scientists report that less than 2 percent (not 30 percent) of nitrogen applied to crops escapes in the form of nitrous oxide. At that rate, sunbathing is far more dangerous to the nation's health than fertilizer. Yet, we can't help but wonder if the damage to our industry will ever peel off.



Bill Buchanan can't get over it. He's seen Stan Zontek lose before - he's just never seen him pay before. I certainly won't complain.

Green Speed — Is Eight Enough?

Thoughts of Oakmont and the recent US Open, or the picture of Jack Nicklaus perfectly struck 4-iron landing four feet from the pin and drawing back to 45 feet on the 16th hole at Augusta, brings to mind a question that is debated frequently and energetically at clubs and green committee meetings all over the country. How fast should greens be?

Something called the STIMPMETER (named after its originator Edward S. Stimpson) gives us a number to attach to green speed. Until this simple but clever device was first widely used in the mid '70's, golfers relied on a variety of adjectives (some we can't print here) to describe a green's speed. Recently, common references to stimpmeter readings, combined with that occasional breeder of bad habits "TV golf", have unfortunately caused a number of misconceptions about green speeds and what is best for a particular club. Hearing commentators with British accents comment on readings of 10' or above and how "wonderfully" fast the greens are for this or that major championship, has left many club golfers with the impression that faster is always better and in some cases it has even started subtle competition between clubs to see who can obtain the highest readings.

Such notions can cause problems. When determining green speed, there are a number of things to consider and, as always, the factors have to be applied to the specific set of circumstances at each club. Golf course architect, Dr. Michael Hurdzan, in a recent article in *Golf Course Management* pointed out that when talking about green speed two very important factors should always be considered—slope, and the overall course design. Greens that are severely sloped or undulating and courses that require demanding approach or recovery shots should not be super fast or they will not properly reward skillful play.

And what about the calibre of player that you are preparing the course for? Is it the US Open, a club championship or a softball league outing? Most would agree that greens of the right speed should reward a deft touch and a skillful stroke, and that the measure of such qualities varies greatly. When you see the greens at Oakmont double cut and possibly reaching "stimp" readings of 11' or even 12', remember that it is The National Championship and that the greens are being prepared for the best players in the world. Preparing greens at or near this speed would obviously not be practical at most country clubs.

Another related factor to consider is the effect of green speed on another speed—the speed of play; a real problem and one that is rising faster than the stimpmeter readings. Although there is no stimpmeter-like device to calculate this relationship, remember that almost half of our strokes are taken on the green and if a mid-handicap player has to sweat over this third putt because the greens are too fast for him, be prepared for five-hour rounds.

A discussion of fast greens also brings up questions of maintenance and budget. To maintain greens at very low heights clubs should recognize that it will require more time and money. Most of the sites we see on TV have a great deal of time and money to spend preparing their golf courses. Greens cut near or below $\frac{1}{8}$ " are very susceptible to wear and tear and disease and will need more care, watering and chemical protection. This is especially true during the critical summer months in our metropolitan area when extreme heat and humidity combined with heavy traffic make the superintendent's job particularly difficult.

These points are not meant to encourage slow greens or to de-emphasize the importance of putting. The fact is that fast greens usually putt truer and add to golf as a test of skill. And, at your club, maybe gradually making the greens little faster for the club championship or the big member-guest can add a "major" touch to the event. And we hope that golfers understand that the stimpmeter can be used to insure consistency in pace from green to green as well as to determine such facts as linoleum, stimps out, as 21 feet.

The point is: use good common sense and do what is right for your club and your membership and on the average, maybe "Eight is Enough."

Credit: MGA Golfing News

"How Fast Is Fast?"

Sherwood A. Moore, CGCS
Superintendent of Golf Courses,
Winged Foot Golf Club

In the English language the word fast has many meanings, such as you can run fast, hold fast, go on a fast, have fast women and have fast greens.

The topic on conversation around the locker and grill rooms of golf clubs these days in "how fast are the greens today?" In some areas of the country it is referred to as "the roll of the green." It all boils down to the speed of the ball on the green. Lost is the art of stroking the ball—today a tap is all that is required. I think some of the golfers want the ball to roll into the cup just by looking at it. At some clubs they post the speed of the green on the bulletin board for the day.

Are we becoming victims of the stimp-meter, fast greens and tournament play? When big tournaments are on TV all we hear about is how fast the greens putt, that they double cut the greens daily, even triple cut, and yes, on some greens quadruple cut to increase the speed.

Whenever a group of golfers or superintendents congregate, golf and turf are naturally discussed, greens speed for the average club is a favorite topic. Seven, eight, nine, ten or more feet is suggested.

Has the superintendent contributed to the dilemma? Yes, in a way. He probably has perfected his course to the point where only incredible fast greens will save par. Also the competition to have faster greens than your neighbor is not helping the situation in any way.

In any event, an increasing amount of pressure is put on the Superintendent to increase the speed of the greens. Every Superintendent has heard the following remarks: "Are the greens going to be mowed today?" "When are you going to lower the height of cut?" "The greens at such and such a club are faster than ours."

Seriously, I am concerned about this trend of "fast greens." Can we afford to maintain greens of the caliber—that require frequent topdressing; frequent verticutting, daily cutting or double cutting of greens; close, close mowing—even to the point of grinding the underside of already thin bedknives.

And in all my conservation and reading and listening, I have never heard anyone mention a thing about the little grass plant. How is it standing up under all this abuse? I was tutored under the late Professor Lawrence Dickenson of Massachusetts and one of his often quoted phrases was "Give the grass plant half a chance. It wants to live." Under these conditions of shaving the grass plant to $\frac{1}{8}$ " or less are we giving it "half a chance?" I do not think so. We are giving it very little chance. Sooner or later we are headed for trouble.

We all know that the root growth of the grass plant is in proportion to the top growth. That the grass pants needs leaf surface for survival—for transpiration,

Mystic KENTUCKY BLUEGRASS

Mystic is so aggressive it rapidly fills in divot scars and fights *Poa annua* invasion making it ideal for use on golf course fairways and tees. It possesses the following characteristics:

- ★ Tolerant of close mowing ($\frac{3}{4}$ ")
- ★ Provides a dense and aggressive turf
- ★ Resists *Poa annua* invasion
- ★ Fine texture
- ★ Bright green color

Mystic was evaluated at Rutgers University by Dr. Ralph Engel and Dr. C.R. Funk under the experimental designation P-141.

For more information contact your local Lofts distributor, or



Lofts Seed, Inc.
Bound Brook, NJ 08805
(201) 356-8700

From Where I Sit

by Bonnie Smoyer

With summer coming and the college students returning home, the public announcements on television and radio begin to perk up one's ears and the tension and frustration mounts. "It's 10:00 p.m. Do you know where your children are?" No, but if you could find my missing car I think I would have the answer. I know where they were at 6:00 p.m. though, because they showed up for breakfast while we were eating dinner. Now if they would only make a minor change in the announcement and say, "It's 10:00 a.m. Do you know where your children are?" A quick bed check would probably give me the answer. Then they always bring forth guilt feelings like, "Have you hugged your child today?" It wasn't because I didn't care to, it's just that I went to bed before they ever got up and out of the shower.

The announcements are so one-sided. Where's the concern for the harried parents? Never do you hear things like, "It's Saturday morning children, do you know where your father's missing tools are?" Or, "It's 5:00 p.m. children. Do you remember where you left your Mom before borrowing her car?" These public announcements could be so helpful to parents if they really tried. For instance, they could say, "Children, it's 12:00 noon-time for lunch NOT breakfast." Or, "Children, did you make your bed today?"

I think more importantly these announcements could help the public to save on food bills by asking, "Children, did you put the milk away?" or "Children, did you close the freezer door completely?"

It seems misleading when they ask, "Do you know that millions of people will go to bed hungry tonight?" How can that be? From the appearance of my disheveled kitchen and ransacked cupboards every morning, most of them were fed right here.

There's no doubt these public service announcements could reach millions of kids--every one you see is hooked up to a set of earphones.

CREDIT: "The Tea Leaf," Ridgewood Country Club's newsletter. Loretta Healey, editor.

How Fast is Fast?

Continued from page 8

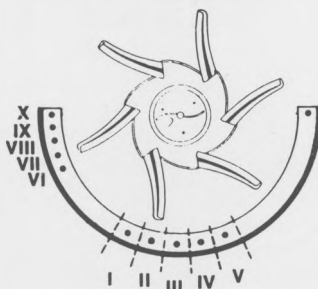
respiration, the manufacturing of carbohydrates to maintain life and growth. It also needs nitrogen and other nutrients that we are withholding so as to increase speed by limiting plant growth.

I predict that in the not too distant future we will get back to the basics of good putting green surface--that the demands of the grass plant will be given equal or more consideration than the demands of the golfers. A firm, true, healthy green with reasonable speed is much more pleasurable than putting on dead grass and plain soil. We will return to stroking the ball, not tapping it.

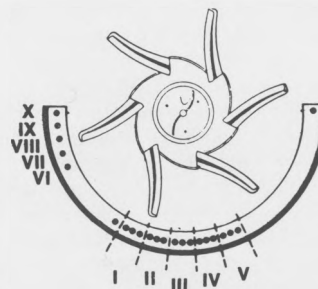
Credit--Tee To Green

KNOW YOUR LELY

Old Lely Model



New Lely Model



Without a doubt, the Lely Spreader is one of the golf course superintendent's biggest allies. When set correctly and operated at the proper ground speed, the Lely applies granulars - fertilizers, pesticides and combination products - quickly, efficiently and economically. But unfortunately, the Lely Spreader settings can often be confusing.

The numbers that control the size of the feed ring opening present no difficulty because they are displayed on the feed ring calibration device. However, the Roman number settings, which control the pattern of the spread, can be confusing because

they are not marked on the spreader. When this adjustment is set incorrectly, some materials are thrown against the framework of the spreader - resulting in striping and uneven applications.

The diagram on this page illustrates the position of these Roman numeral settings. Marking these numerals on your Lely can save a lot of time and effort and prevent a lot of application errors. They can be painted on, scratched in the paint, labeled with a magic marker or labeling machine. Once the Roman numerals are clearly marked, you can be confident your products are being applied accurately.



**LONGO
INDUSTRIES**

*Service Thru Knowledge
Since 1923*

- **Pumps**
- **Motors**
- **Bearings**

SALES • SERVICE

REPAIR • REBUILDING

*Call us if it breaks down,
wears out or just doesn't work right.*

PATERSON, RIDGEFIELD, MORRISTOWN
LINDEN, MORRIS PLAINS

**201-539-4141
24 HOURS**

*Alan G. Cruse,
Inc.*

GOLF COURSE MATERIALS

- Top Soil
- White Sand
- Yellow Stone
- Crystal Spar
- Humus

Loader, Bulldozer,

Royer and Truck Rentals

290 SO. ORANGE AVENUE
LIVINGSTON, N. J. 07039

(201) 992-2335

Turfgrass Research Assisted by the NYS Turfgrass Association

Turfgrass research at Cornell University conducted by Drs. A. Martin Petrovic, Richard Smiley, Haruo Tashiro and Arthur Bing has been aided during the past year through the efforts of the New York State Turfgrass Association and the granting of over \$20,000.

The research extends over all areas of turfgrass management and includes work on diseases and fungicides, insects and insecticides, weed control and herbicides, soil fertility, wetting agents, cultivar evaluations, sewage sludge utilization, renovation and establishment techniques and comparison of liming materials. As a part of this research undertaking, NYSTA is funding a graduate student.

During the past twelve months, contributions have been received by NYSTA for turfgrass research and have been donated to Cornell University. The firms and associations that made these donations are: J. & L. Adikes, Inc.; Agway Inc.; Central NY Golf Course Superintendents Association; Diamond Shamrock Inc.; CIBA-GEIGY; Finger Lakes Association of Golf Course Superintendents; ICI Americas Inc.; Lilly Research Laboratory; Long Island Golf Course Superintendents Association; Long Island Landscape Gardeners Association; Metro Milorganite; Metropolitan Golf Course Superintendents Association; Mobay Chemical Company; Monsanto Agricultural Products Co.; New York Turf & Landscape Association; Northrup King Co.; Rhone Poulenc Inc.; 3M Agricultural Products; Velsicol Chemical Corp.; and the Western New York Golf Course Superintendents Association.

For more information, write to the NY State Turfgrass Association, c/o Executive Director Ann Reilly, 210 Cartwright Blvd., Massapequa Park, NY 11762.

GUIDANCE FOR PESTICIDE WASTE DISPOSAL

This 11 pp. publication was developed by the N.J. Bureau of Pesticide Control in order to simplify the Hazardous Waste Regulations. They have distilled information from the rather complex regulations of the N.J. Bureau of Hazardous Waste in order to portray the basic requirements in straight-forward understandable terms. Although these guidelines are NOT the N.J. legal requirements for pesticide disposal the Bureau of Pesticide Control has written them as a service to the public involved with pesticides.

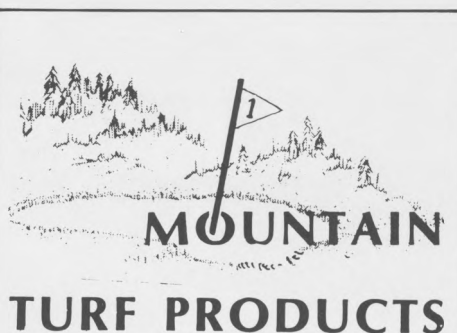
These guidelines were distributed with the March, 1982 issue (Volume 1, No. 1) of "The Pesticide Scoop" which is a new general newsletter from the bureau. Single copies of the newsletter "The Pesticide Scoop" and the summary of the requirements of the Pesticide Disposal Regulations may be obtained without charge from the Bureau of Pesticide Control, 380 Scotch Road, West Trenton, N.J. 08628, (609) 292-5890.

Met Area Team Championship Grossinger's Country Club September 21, 1983 GCSANJ Low Averages to Date

	4/12	5/24	6/28	7/21	Average
Terry Stanley	78	76			77
Shaun Barry	77	83		79	78
Ed Walsh	87	81			84
Dick VanZandt	84	83			83
Richie Brown	79	79			79
Paul Granger		79		82	80
Wayne Remo		83	85		84
Harry Harsin		78		80	79
Phil Scott		86		80	83
Chris Gaynor	85			79	82

Players must have two recorded scores from GCSANJ monthly meetings to qualify. The two lowest scores will count toward the average. Because the Essex Fells (June 29) meeting was, for all practical purposes, a washout, we will allow those players who were at that meeting and wish to participate in the team championship, two options: The player can either (a) play a round at Essex Fells and give me the score (call Wayne Remo to confirm), or (b) let me know what his certified handicap is at his club and I will use that score toward his average. Also, any player who did enter a score at Essex Fells and feels that score would have been better under improved weather conditions can utilize one of the available options.

Please call me with any questions: Ed Walsh, (201) 652-1650, office; (914) 782-5935, home.

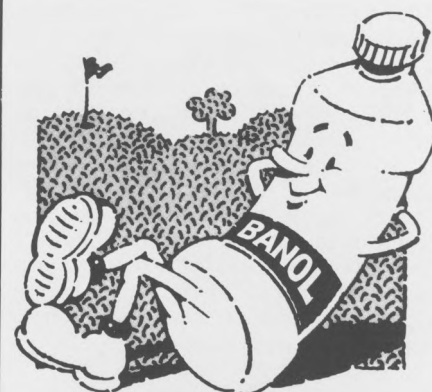


BOX 683
Pocono Pines, Pa. 18350

Tel. (717) 646-7220
(201) 762-6668

*Everything
for the fine Turf Industry*

Now serving all your equipment needs. Buying, selling, trading used equipment. Before buying new, why not see what we can do?



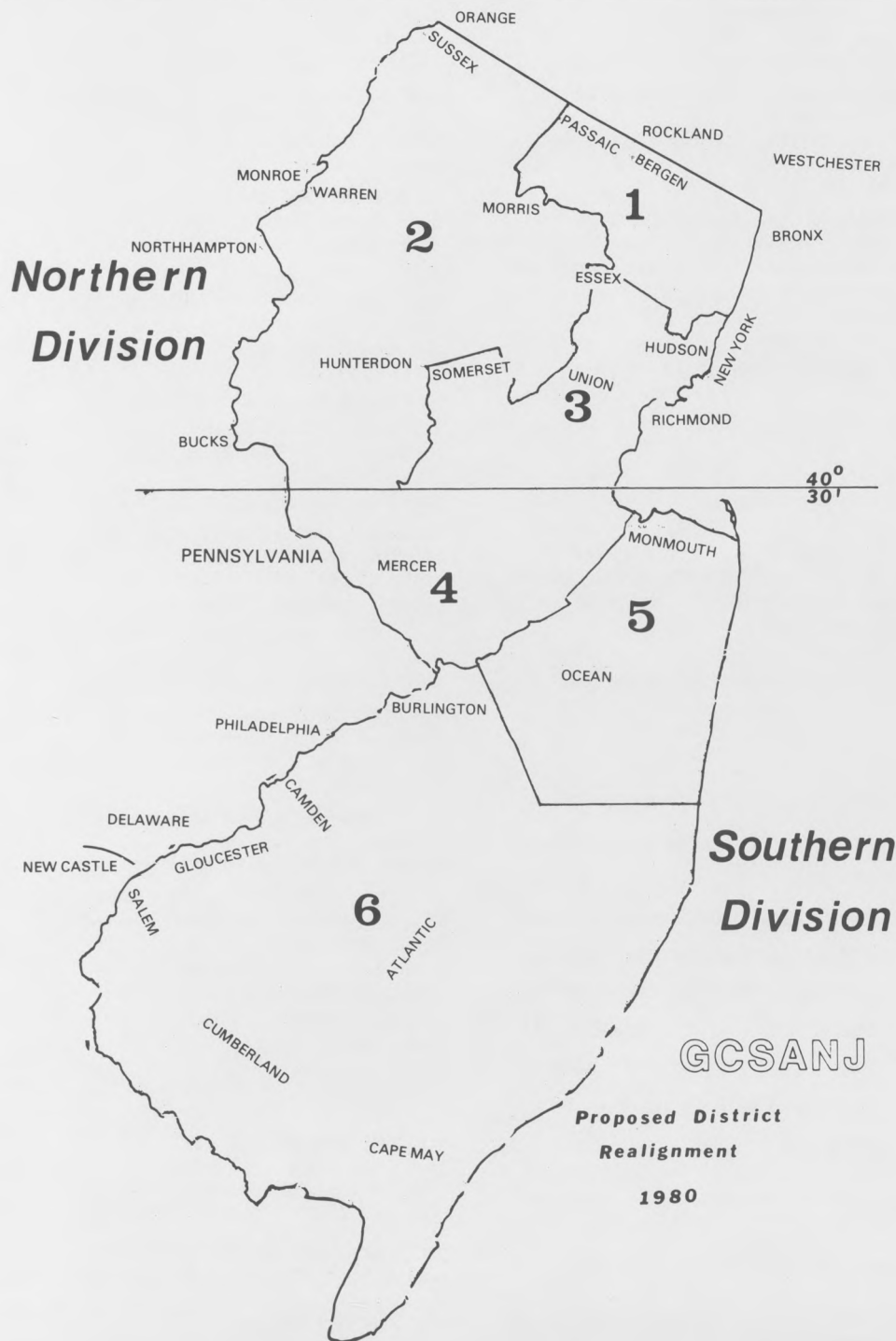
**BANOL™ TAKES
THE WORRY OUT
OF PYTHIUM!**

DAVID J. SYLVESTER
AREA SALES REPRESENTATIVE
TUCO AGRICULTURAL CHEMICALS

311 CARRIAGE DRIVE
KENSINGTON, CONNECTICUT 06037
203/828-8905

TUCO DIVISION OF THE UPJOHN COMPANY
KALAMAZOO, MICHIGAN 49001 616 / 323-4000

An Old Idea Brought Back to Life?



Angie, if I had the time to work with your game, I think we could make a golfer out of you.



I will not stop smoking until I reach the age of --?

Dol-Drum Industrials

Rainfall	Up
Attitudes	Down
Clippings	Up
Members' Attitudes	Down
Pythium	Up
Crew Morale	Down
O.T.	Unchanged
Green Speed	Down
Summer Projects	Down
Crabgrass	Up
POA	AMF
Handicaps	Up
Trap Sand	Out
Forecast	Who Cares!
Weekend Golf	Down
Cart Revue	Down
Revised Drainage Projects	Up
New Water Holes	Up
Oftanol	Down
Sub-due	Outlook Optimistic
Fairway Mowing Height	Up
Top Dressing	Down
Martin's Handicap	Unchanged

A Quick Note

Pete Pedrazzi and I had the opportunity a few weeks ago to play Plainfield Country Club. Plainfield is a course I had been on many times watching various tournaments but had never played before. I must admit Red Wender has one of the finest courses to be found anywhere. I have played most of the great golf courses in the New York metro area, and from a layout and condition standpoint, Plainfield is one of the very best. Great job Red, and thanks!

the VAUGHAN'S SEED CO.

Chimney Rock Rd.
Bound Brook, N.J. 08805
(201) 356-4200



SEED • FERTILIZER • TURF CHEMICALS
• GOLF COURSE SUPPLIES

SKY BERGEN
P.O. BOX 202
CHATHAM, N.J. 07928
(201) 377-2054

BOUND BROOK, N.J. 08805
(201) 356-4200

CALL TOLL FREE

N.J. 800-942-7706
Out of State 800-526-3814

THE GREENER SIDE PATRONS

ALAN G. CRUSE, INC.

Top Soil, Sand, Stone, Spar, & Humus
Al Cruse
(201) 992-2335

ALPINE TREE CARE, INC.

Serving Northern N.J. for 64 years
Bob Mullane - Peter Moritz
(914) 948-0101

AMERICAN TENNIS & TRACK, INC.

Repair and Construction -
Tennis Courts and Running Tracks
Harold G. Skinner
(201) 778-1171

ANDREW WILSON, INC.

Irrigation, Chemicals, Equipment
Drew Morrison
(201) 467-1400 (office)
(201) 273-8555 (home)

ARTESIAN PUMPING SYSTEMS

Pumps for Watering, Systems
Peter J. Mauro
(201) 845-7080

AQUATROLS CORPORATION

OF AMERICA
AQUA-GRO — it drives your dirt to drink...
& drain.
Demie, Andy, or Bob Moore
(609) 665-1130

BLUE RIDGE PEAT FARMS, INC.

Top Dressing, Peat, Humus, & Potting Soil
Gene Evans
(717) 443-9596

BRUE DAN CORPORATION

Golf Cars & Industrial Vehicles
Jake Kriney - Richard Lewis
(914) 469-2275

DAVENPORT TREE SERVICE

New Jersey Certified
John Schaus
(201) 891-1764

DOUBLE EAGLE GOLF &

- INDUSTRIAL PRODUCTS
The Cushman People
(201) 521-2500

EGYPT FARMS, INC.

Golf Green Top-Dressing
John Strickland
(301) 335-3700

FERTL-SOIL

Turfgrass Supplies
Martin Futyma
(201) 388-0100

GARDEN STATE GOODALL

Goodall Turf Equipment
Phil Mowery, Stan Stevenson,
Dave Walter (609) 799-4101

GEO. SCHOFIELD COMPANY, INC.

Sand, Stone, Mulch Chips, Compost Plus
(201) 356-0858

GOLF BY JANIS INC.

Golf Course Construction,
Renovation, Irrigation
Al Janis (301) 641-8156

GRASS ROOTS TURF

PRODUCTS, INC.
Turfgrass Supplies
Ken Kubik (201) 361-5943
Bert Jones (201) 686-8709

JEP SALES, INC.

Turf Maintenance Equipment
Jack Poksay - Tony Ripple
(609) 585-2300

KOONZ SPRINKLER SUPPLY

COMPANY
Rainbird Irrigation Equipment
William Koonz
(201) 379-9313

LAKESHORE EQUIPMENT & SUPPLY COMPANY.

Manufacturers, Distributors Turfgrass
& Horticultural Supplies
Les Guedel
(800) 321-5325

LEBANON CHEMICAL CORP.

Country Club Fertilizers & Chemicals
Bill Nist
(201) 329-4011

LEON'S SOD FARMS

Certified Sod Grown on Mineral Soil
Samuel Leon
(201) 996-2255

LOFT'S PEDIGREED SEED, INC.

Seed for the Turfgrass Industry
Richard Hurley
(201) 356-8700

LONGO MOTOR & PUMP, INC.

Motors - Pumps - Bearings
Rewind, Repair, Sales
(201) 539-4141 24 hours

**The listed PATRONS are
the sole financial supporters
of this publication. Without
them this newsletter would
not exist. Please give strong
consideration to supporting
them whenever possible. If
you don't support them,
they will not be able to sup-
port us.**

EDITOR

METRO MILORGANITE, INC.

Turfgrass Supplies
Tony Grasso and John Wistrand
(914) 769-7600

MID-ATLANTIC EQUIPMENT CORP.

Golf Cars & Turf Maintenance Equipment
Sam Baird, Jr. - Tom Haskell
Bill Marberger (215) 489-1400

MONTCO PRODUCTS CORPORATION

Surf Side & Zap
Robert Oechsle
(215) 628-3144

MOUNTAIN TURF PRODUCTS

Turfgrass Supplies
Richard Grant
(717) 646-7220

O.M. SCOTT PROTURF

Fertilizer, Chemicals
Fran Berdine (914) 361-4105
Bob Dwyer (201) 238-5941

PARTAC PEAT CORPORATION

Golf Course Top-Dressing
James Kelsey
(201) 637-4631

ROCKLAND CHEMICAL CO., INC.

Turfgrass Chemicals & Fertilizer
Cliff L. Belden, III
(201) 575-1322

REES JONES, INC.

Golf Course Design
Rees Jones
(201) 744-4031

SEACOAST LABORATORIES, INC.

Granular Turfgrass Pesticides
Richard Baker
(201) 257-7772

STANDARD GOLF COMP.

Pro Line Golf Course Equipment
Steve Tyler - Chief Waseskuk
(319) 266-2638

STEVEN WILLAND INC.

Ransomes Grass Machinery
Bill Rapp
(201) 227-5612

STORR TRACTOR COMPANY

Turf Maintenance Equipment, Irrigation
Paul Deschamps - Gene Tarulli
(201) 722-9830

STUMP REMOVAL CO.

Clean - Efficient - Inexpensive
Ron Manning
(201) 444-0676

THE TERRE COMPANY

Turfgrass Supplies
Dennis DeSanctis - Greg Hutch
(201) 473-3393

TURF PRODUCTS CORPORATION

Turfgrass Supplies
Ernie Rizzio - Rich Berberick
(201) 263-1234

UPJOHN - TUCO COMPANY

Turfgrass Chemicals
David Sylvester
(203) 828-8905

VAUGHAN'S SEED CO.

Turfgrass Seed and Supplies
Sky Bergen (201) 635-6469
(201) 356-4200 (800) 942-7706

VIC GERARD GOLF CARS, INC.

New & Reconditioned Golf Cars
Vic Gerard, Jr.
(201) 938-4464 (office)
(201) 367-5303 (home)

W.A. CLEARY CHEMICAL CORPORATION

Turfgrass Chemicals
Clay Nelson - Shaun Barry
(201) 247-8000

WILFRED MacDONALD, INC.

Turf Maintenance Equipment
Ed Lott - Ed Rockhill - Bill Luthin
(201) 471-0244

WM. STOTHOFF CO., INC.

Pump Sales and Service
Wm. "Pete" Stothoff, III
(201) 782-2717 (bus.)
(201) 782-7060 (res.)