

THE GREENERSIDE

Vol. 8 No. 3

May - June 1985

RIBBANS HOSTS LPGA

by Jim Gilligan

CHATHAM TOWNSHIP

The Fairmount Country Club, Chatham Township, will host the LPGA Chrysler-Plymouth Charity Classic from May 13-May 19, 1985. A Pro-Celebrity Day on Wednesday, May 15th kicks off the tournament; regular play begins on Friday, May 17th and the final round is played Sunday, May 19th.

Bob Ribbans, CGCS, Fairmount Country Club Golf Course Superintendent has been preparing for this tournament since September, 1984 when the LPGA selected Fairmount as their site for the 10th anniversary of this LPGA event. Under Bob's firm hand Fairmount has been in tournament condition, having hosted the 1984 NJPGA Championship.

No major changes on the golf course were necessary to provide the LPGA with the finest playing conditions. The course will measure 6265 yards and play to a par 73; one of the longest courses on the LPGA tour.

A minor change was necessary on the eleventh hole. Two 30 foot white pine trees were moved from the right side of this par 5, 446 yard dog-leg left hole to protect the left side; water and bunkers guard the green offering the players a challenge to make birdie.

The LPGA players will be covering the full 6265 yards from a combination of ladies tees and the front portion of men's tees. The large, strongly-sloped, and contoured greens will present excellent target areas. The greens mowed at 5/32" will contest the putting ability of the players.

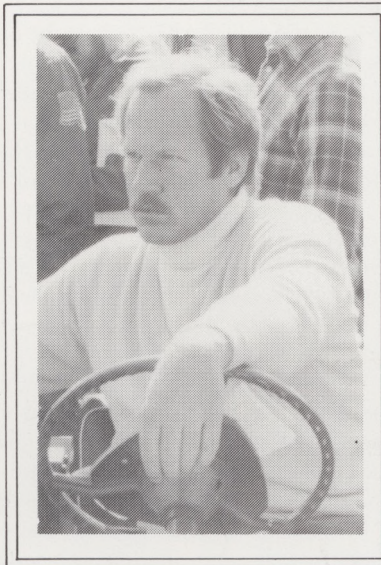
The greens, predominantly Pennncross, have been topdressed regularly. Earlier fertilizer applications were made to counter a flush growth during the tournament. A preventative disease control program was initiated to combat the possibility of an early season outbreak of Dollar Spot and Brown Patch. A normal schedule of Leaf Spot control on the fairways is being maintained.

Bob's staff, headed by Assistant Golf Course Superintendent Bob Novack have been involved in numerous projects in preparation for the tournament. One of the logistical problems has been the erection of a large protective net around the practice range. The range is short—long woods travel through the range, landing on an adjacent fairway. This net installation has required knowledge, experience and ingenuity of

all involved. A temporary 2.5 mile fence has been erected on the perimeter for security reasons. The accompanying photograph shows Bob Ribbans and some staff members assembling one of the scoreboards. These will be utilized to keep contestants and spectators informed.

Fairmount increased their maintenance staff for the tournament by adding four permanent people. The golf course operating budget increased 12%.

Bob Novack, Assistant Superintendent, is receiving his introduction in tournament preparation early in his career. This being his first as Assistant Superintendent.



continued on page 4

THE GREENERSIDE

GCSANJ Newsletter is published six times a year by the Golf Course Superintendents Association of NJ, P.O. Box 231, New Brunswick, NJ 08903.

Jim Gilligan, *Editor*
Ed Walsh, *Editor Emeritus*
Ken Kubik, *Special Projects*
Wayne Foster, *Photography*

Please address inquiries to the Editor,
P.O. Box 143, Skillman, NJ 08558.

GOLF COURSE SUPERINTENDENTS ASSOCIATION OF NEW JERSEY

Cook College - Rutgers University
Box 231, New Brunswick, NJ 08903

Officers:

Bob Ribbans, CGCS, *President*
Wayne Foster, *Vice President*
Bob Matthews, CGCS, *Secretary*
Wayne Ballinger, CGCS, *Treasurer*
Bob Dickison, CGCS, *Past President*

Directors:

District 1	District 3
Jo-Ann Ward	Dave Pease
Joe Kennedy	Charlie Edgar
District 2	District 4
Jeff Drake	John Boyer
Chris Gaynor	Len Forlenza

Executive Director:

Dr. Henry Indyk

*Art and Typography by Backes Graphics,
Hopewell, New Jersey*

CONTENTS

Ribbans Hosts LPGA	1
Editorial	2
GCSANJ Policy	3
Willet Wilt	3
District 4 Opens	4
NJ Water Use Facts	5
GCSANJ Meets Dept. Com.	5
Thoughts from X-Editor	6
PGA Golf Show	6
MGA Forms Green Com.	7
Meet the Patron	8
PA Press Release	8
GCSAA Assignments	9
Back-9	10
Greenerside Calendar	11
Patrons	12

EDITORIALS

WATER OR LACK OF

THE COVER STORY for "Golf Course Management" magazine this month is *water!* The subject of the President's Message for that issue concerns itself with *water!* The state of NJ is in "Phase One" of the drought emergency because of the lack of *water!*

At present the northern counties of NJ are under water restrictions. Golf courses in these counties are only permitted to water between the hours of 3AM-5AM. For those courses that are supplied by "city-water" the crisis is far more critical because they may be shut off completely. These restrictions and the areas restricted may be extended if the drought continues.

In the near future, representatives from the GCSANJ and the NJ State Golf Association will be meeting with our lobbyist, Peter McDonough, in Trenton with the Water Emergency Task Force to request a more reasonable allocation of water to allow the golf industry in our state to survive.

The water crisis is real and we all understand the importance of conservation—but we also want our government officials to realize how important our industry is, not only to the environment, but to the thousands of people employed and millions of dollars spent in the golf industry.

Through your cooperation and water conservation we can still reduce our water usage and "Keep Golf Green."■

Bob Ribbans, CGCS
GCSANJ President

AN INTRODUCTION

WHAT DOES IT TAKE to become an editor of an association newsletter? The recipe should include equal parts of disorder, nerve, procrastination, time, and patience.

Being a golf course superintendent has prepared me well for this adventurous task. This is a deadline business as is golf course maintenance. We all know the grass is a living creature that needs to be nurtured, watered, manicured, and it never knows the time of the day or day of the week.

I hope all these years of experience on the golf course will give me the insight to the harshness and joy of being a golf course superintendent. This newsletter can be a vehicle each one of us can use to express ourselves; we need to be heard, we have been silent too long. I will give you the opportunity on the pages of The Greenerside to present your viewpoints, register your complaints, and if there is any justice, an appreciation of the effort.

Ed Walsh, Editor Emeritus, set a precedent for quality, pugnacity and punctuality that established the standards for this newsletter. It will be my job to maintain his standard of excellence and if the newsletter falters, Ed will be there to stand it up. I am not replacing Ed; I'm only moving into his desk. Ed has done an outstanding job as editor and I hope to measure up to his success.

The format will not change; the change I'm looking for is in the bylines. I want to edit articles and opinions of the GCSANJ membership. I enjoy writing, but I am the editor; I can help you write an article. Put your concepts on paper and send them to: **THE GREENERSIDE**, P.O. Box 143, Skillman, NJ 08558. (*Skillman is only thirty miles due north of Hog Wallow.*)■

Jim Gilligan, Editor
The Greenerside

*"The ambition of the Irish is to say a thing as everybody says it,
only louder."*

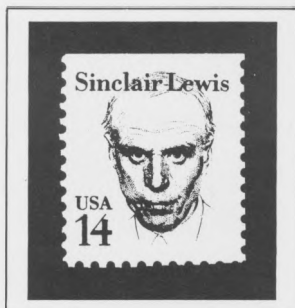
Gerald Manley Hopkins

A TRIBUTE TO ED WALSH

ED WALSH, A MODEST INDIVIDUAL, has succeeded in quietly stepping aside as editor of The Greenerside. This is ludicrous, we know he isn't modest, we know he isn't quiet, let us mimic Ed for a moment and sound off an overdue **Thank You**. He edited and produced this fine newsletter for over six years, he represented the members of GCSANJ in a profound way, he kept us informed. Ed isn't finished. Being Editor Emeritus, he has a career pass to page 6 to say what is on his mind. If you don't believe it see page 6. Thanks, Ed Walsh.■

Jim Gilligan

GCSANJ POLICY



The face you see on this page belongs to *Sinclair Lewis*, winner of the Nobel Prize for literature in 1930. His importance to us is not his literary reputation, but the fact that he graces the 14¢ stamp. 14¢ is the current cost of U.S. postal cards.

These 14¢ postal cards are part of the Attendance Policy being enforced by the GCSANJ. In conjunction with the Attendance Policy is the Cancellation Policy, both of which are explained in detail below. A Guest Policy is also on the agenda—be cooperative in all these policies.

POLICIES

A. Guest Policy

1. Each member is allowed *one* guest per meeting and only *two* guests total per year, except for guests who are golf club officials.
2. Guests must not sign for expenses at a meeting. Any member bringing a guest must sign for him.

B. Attendance Policy

Attendance will not be permitted without proper reservations made by return of the card provided with the Meeting Notice within the specified deadline date or by a phone call to the Executive Director's office no later than 48 hours before the scheduled meeting date.

C. Cancellation Policy

If reservation(s) are made but unable to attend for unforeseen reasons, cancellation of reservation(s) will be required and accepted up to 48 hours before the scheduled meeting. Any reservations which are not cancelled within the prescribed period will be billed and obligated for payment of dinner cost.

This Meeting Policy will provide for more orderly meetings for all concerned as well as improve upon our professionalism. Your cooperation in adhering to this policy is requested.■

Willet Wilt says:

CAN A DROUGHT BE GOOD?



The drought emergency has compounded the problems of the Jersey Golf Course Superintendent. The Governor said you can water between 3 and 5AM. That's fine if you have a waterman who has insomnia and can see in the dark. In the summer, by 3AM most superintendents have been asleep for 6 or 7 hours.

The fairways are getting so hard one fellow got a hole-in-one last week on a par four hole. A superintendent said he had not realized how hard his greens were getting until he heard the "BOINGS" when the golf balls hit the greens.

The spring drought is supposed to be good for the roots of the grass. By July your grass will be brown, but you will be able to tell the golfer how great the roots look. One superintendent's tees have become so dried out that he spreads Calcium Chloride on them to keep the dust down.

With the drought and greens being cut so short for speed, no grass will be able to survive. Therefore, we'd better develop a putting green quality moss.

Willet's next lecture in his series will be on how to make your putting greens not fast and not slow, but "Half-fast." If you plan to attend this "Half-fast" lecture, please let Ken Kubik know as soon as possible because of the limited seating capacity in Willet's van.■

If you have any topic requests for Willet Wilt, send them to Ken Kubik, P.O. Box 336, Mt. Freedom, NJ 07970.

THE TENSION RELIEVER.

You can worry about turf problems caused by too much or too little water, or you can use **AQUA-GRO**, the 100% active ingredient water management tool.

**AQUA-GRO ELIMINATES
LOCALIZED DRY SPOTS. . .
AND COMPACTION.**

**AQUA-GRO INCREASES
FERTILIZER AND
PESTICIDE ACTIVITY.**

**AQUA-GRO REDUCES
WATERING COSTS 30%-50%.**
AQUA-GRO reduces irrigation costs, because water is used more efficiently. There's less run-off and less evaporation . . . you use less water, plants get more. And **AQUA-GRO** lasts, because it won't leach.

For free illustrated brochure and more information call TOLL FREE 800-257-7797, in N.J. 609-665-1130.

AQUA-GRO®



AQUATROLS CORPORATION OF AMERICA, INC.
1432 Union Avenue, Pennsauken, New Jersey 08110

KOONZ

WILLIAM F. KOONZ
President

WILLIAM F. KOONZ, Jr.
General Manager

WILLIAM HOWELL
Director of Sales

**Master Distributors
for
RAIN BIRD, WEATHERMATIC
and HUNTER
Sprinkler Equipment**

*We maintain a complete inventory of
pipe, fittings and repair clamps. Call us
for all your irrigation requirements.*

**KOONZ
Sprinkler Supply, Inc.
39 Waverly Avenue
Springfield, New Jersey 07081
(201) 379-9314**

*Specialists in Golf Course
Irrigation Design*

RIBBANS HOSTS LPGA

continued from page 1

Fairway conditioning is always measured by people when judging the quality of the golf course. Fairmount's bent grass populated fairways will be mowed at 5/8" during the tournament. A Toro 350D unit will be used each evening to mow the thirty-acre fairway. Regular mowing patterns consume 5 1/2 hours; alternate mowing patterns will be used.



Photo: Susan M. Pace

Bob Ribbans and crew working on scoreboards

Being early in the season irrigation shouldn't be a major concern. However, this season New Jersey is experiencing a major drought. There may be significant water restrictions enforced at tournament time. Bob's irrigation plan is to use less irrigation during the tournament. The drought restrictions will make him an honest man.

Fairmount will close to member play on Sunday, May 12th send the staff immediately into their tournament maintenance schedule.

Tournament preparation can be frustrating, exhausting, and almost endless, but Bob has planned well; his staff is trained, the turf is in fine shape, and maybe in the end—good weather. ■

DISTRICT 4 OPENS WITH TAVISTOCK

MEMBERSHIP MEETING

District 4 directors John Boyer and Len Forlenza, hosted the Opening General Membership Meeting at Tavistock Country Club. Tom Grima, Superintendent, (Stock Bridge '79) provided the golf course and nature provided the beautiful weather. The program included golf (results on pg. 10), dinner and education. Sixty-eight members and guests attended.

Tavistock has embarked on a unique program of converting their fairways to zoysia. They have completed plugging 14 acres of fairways with 11 acres remaining. If this isn't enough they are in the third year of a three year bunker rebuilding program.

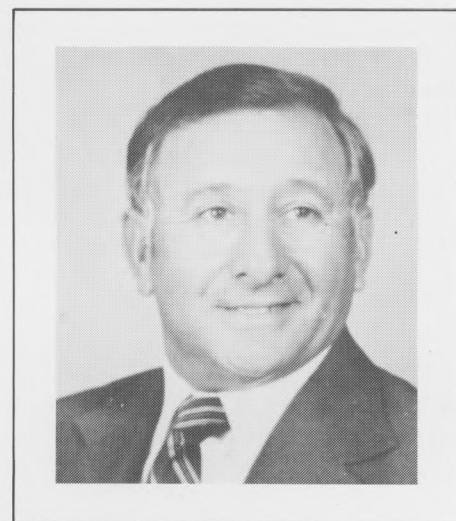
EDUCATION

The education program was highlighted by the appearance of John Segui, CGCS, GCSAA Membership Chairman. John presented a slide program on GCSAA history, scenes of headquarters at Lawrence, KS and benefits of a GCSAA Membership.

John outlined the current certification process. The role of the attestor drew a sharp reaction from the audience. The concern was whether the attestor was at-

testing a superintendents qualification to be certified or making an evaluation of his ability. Segui listened and promised to relay this concern to the GCSAA Board of Directors.

Tom Grima acknowledged his two assistants Mark Williams and Steve Hesser, praising them for their fine work in preparing for this meeting. ■



John Segui, CGCS, GCSAA Membership Chairman, promises to relay concerns to GCSAA Board of Directors.

grass roots

turf products, inc.

You can't grow GRASS without ROOTS

KEN KUBIK
(201) 361-5943

BERT JONES
(201) 686-8709

★ ★ ★ TIPS ON WRITING PUBLISHABLE MATERIAL ★ ★ ★

- Be interesting
- Know what you are talking about
- Re-write your material
- Be grammatical
- Get the facts
- Use short concise sentences
- Use ordinary English
- Have your work edited

DROUGHT: A PERIOD OF LITTLE OR NO RAIN

We are in a major drought for the second time in this decade. The rainfall deficit since August, 1984 is 12 inches and it is the first time in 50 years there has been no significant spring runoff. What snowpack there was in the watershed evaporated during the extremely warm spell in February, 1985.

This eight month shortage is significant, because it resembles the pattern during the prolonged drought of 1961-1965. During this period New Jersey was declared a disaster area. At the height of the drought in 1965 the annual deficit was 16 inches, the rate we are experiencing.

Armed with the low percentages in the reservoirs, the gloomy forecast and the long summer approaching Gov. Kean issued Executive Order 97-1 on April 18, 1985, enumerating 94 communities in North Jersey, putting them into a Phase 1 Water Emergency. Golf courses in those communities may water greens and tees from 3:00 AM to 5:00 AM on odd numbered days of the month. In a related manner clay tennis courts may be watered by means of sprinklers for no more than 10 minutes once each day between 3:00 AM to 5:00 AM.

With the continuance of dry weather it is expected the water use restrictions will spread to more communities impacting more golf courses.■

The National Weather Service will be issuing a drought potential-water resources statement detailing the previous two week's rainfall and predicting the ensuing two weeks. These statements will be issued every second and fourth Wednesday each month, beginning April 24th.■

NEW JERSEY GOLF COURSE WATER USE FACTS

There are approximately 264 golf courses in New Jersey. Of this number 143 are public or daily fee courses. Over the past year on public courses alone, 6.7 million rounds of golf were played with the golfers spending over 5.4 million dollars.

On an industry wide basis the New Jersey Golf Industry spends over 300 million dollars a year. There are over 12,000 people employed on our state's golf courses and the courses pay well over 120 million in taxes each year. Each year the golf business raises over five million dollars for local charities. We are probably the state's largest fund raiser outside of the "United Way".

Our golf courses employ thousands of low income minorities, students of local high schools and colleges each year who otherwise would be unemployed. These people are the ones who would be affected most if there are any major cutbacks in our industry, resulting from water restrictions.

The average golf course is 150 acres in size. Greens and tees total about 4 acres and fairways approximately 30 acres. The value of this fine turf is six hundred thousand dollars on each 18 hole golf course.

Well over 90 percent of New Jersey golf courses have their own non-potable water supplies, that are derived from holding ponds, lakes, streams and wells on their property. As an industry that depends on water for the quality of its product we have always tried to develop extra water sources as a hedge against prolonged dry spells.

Environmentally speaking, the average 150 acre golf course can: infiltrate into ground water supplies 82,000 gallons from an average rain, this is enough water for more than 1,000 people; supply enough oxygen to sustain life for over 9,000 people. In our highly urbanized state, golf courses are the providers of the much needed "green belts". In some cases golf courses are the only "green areas" in a community.

The New Jersey Golf Course Superintendents have always been looking for ways to efficiently irrigate their fine turf. We have installed automatic controllers and moisture sensors, supported research for drought resistant turf, increased surface water holding ponds and lakes, backed increased use of effluent for irrigation and work closely with the DEP to monitor water supplies within New Jersey. We have done, and will be willing to do, our part in water conservation for the future. We also know that many decisions regarding drought conditions are of a political or arbitrary nature and we will not jeopardize our investments under those circumstances.

The New Jersey Golf Course Superintendents feel that in setting guidelines with the DEP regarding irrigation during a drought, prior to the emergency period, will eliminate the problems that would arise if it were done at the last minute, as in the 1980 drought.■

GCSANJ MEETS WITH DEP COMMISSIONER

On Tuesday, April 23rd, three GCSANJ Representatives met with Donald Graham NJ Department of Environmental Protection Assistant Commissioner of Regulatory and Government Affairs. The Representatives, Bob Dickison, GCSANJ Governmental Relations Chairman, Jim Gilligan, Editor of The Greenside and Peter McDonough, Legislative Representative, know the two hour watering on odd number days is not sufficient. In this early phase of the drought emergency, more time should be allocated.

Mr. Graham advised the GCSANJ to appeal this allocation to the Water Emergency Task Force, chaired by Dirk Hofman, Deputy Director of the Division of Water Resources.

The GCSANJ in partnership with New Jersey State Golf Association is forming a committee to make the appeal to the Task Force. Bob Dickison will be heading the GCSANJ delegation.■

Vic Gerard Golf Cars, Inc.



**Electric Vehicle &
Battery Specialists**

**Tire, Batteries and
Distilled Water**

**FOR GOLF COURSE
MAINTENANCE EQUIPMENT
or
UTILITY VEHICLES**

Stop in or give us a call!

(201) 938-4464

R.R. 2, Box 28, Hwy. 547
Farmingdale, NJ 07727



Thoughts from the X-Editor

Although it is said you should not bring your job home with you, I find that almost impossible as a Golf Course Superintendent, and I am sure I am not alone.

How often have you attended a social function with other superintendents and listened to our wives discuss labor problems, golf carts use, fertilization programs or gov-

ernmental regulations? Probably so often it becomes surprising only if they don't talk turf to some extent. Most often our children are usually well versed in our professional problems also. As an example, just a few short weeks ago I was discussing the drought situation over dinner. I explained that in our area we could only water our greens and tees from 3 AM to 5 AM and only on odd numbered days. Without another word, my son, Christopher, aged 16, suggested that didn't seem fair. He asked how a course with nine holes could be granted the same allocations as a 18, 27 or 36 hole course. Then my daughters, Jennifer (15) and Beth Ann (13) started discussing the last drought crisis in 1981. I am sure they remembered because Ridgewood hosted a L.P.G.A. event than year. They said they didn't think those kinds of restrictions would be imposed after all the cooperation we provided the State of New Jersey (D.E.P.) with regarding water usage, taxes, employees, purchased goods, etc., etc., etc. (it's amazing what kids remember).■

ED WALSH, CGCS

FOR SALE:

Lockers—6' x 14' x 24" deep. Excellent for staff lockers or storage. Make an offer. Contact: **Charlie Dunlap, Dunlap Construction** (patron). Office: (201) 489-4562 Home: (201) 488-7803

P.G.A. GOLF SHOW

On April 1 the GCSANJ participated in the New Jersey P.G.A. Golf Show held at the Aspen Hotel in Parsippany. The P.G.A. provided us with a complimentary booth where we had a slide presentation, copies of the Greenerside and a raffle on some fine golf books. The booth was located in an active area. The slides, featuring many golf courses and a tree identification quiz, grabbed the attention of many attendees long enough for them to find out who we are and what our association is all about. The show was geared to golf pros and their suppliers, and attracted many club members, public golfers and people interested in the game. Our participation in this show was a good public relations tool for us and could be even more effective in the future. We must thank the following people for providing slide trays that were shown during

the show: Ed Walsh, Ted Horton, Bruce Cadenelli, Steven Cadenelli, Ray Korbobo and Roger Rulewich (of R.T. Jones.)

We also appreciate the efforts of those who helped with the show and manned the booth throughout the day: Ed Walsh, Bob Matthews, Jim Gilligan, Bob Dickison, Bruce Cadenelli, Bob Ribbans, Skip Cameron, Jack Martin and Dr. Henry Indyk.

Gary Danbeck, NJPGA President and golf professional at Alpine Country Club, acknowledged the GCSANJ participation in his comments to the general audience.

George Sauer, NJPGA Golf Show Chairman and Steve Jubb, NJPGA Executive Director were very cooperative with the set-up of the booth and educational presentations.■

BOB MATTHEWS, CGCS

PARTAC[®] GOLF COURSE TOP-DRESSING



AMERICA'S PREMIUM TOP-DRESSING

HEAT TREATED

AVAILABLE IN BULK OR BAGS

DISTRIBUTED IN N.J. BY:

FARM & GOLF COURSE SUPPLY
HOWARD SCOTT, 215-483-5000

FISHER & SON CO.
FRANK FISHER, 215-644-3300

GRASS ROOTS TURF PRODUCTS
KEN KUBIK, 201-361-5943

GREEN HILL TURF SUPPLY
JIM ROACH, 201-938-7007

PRO-LAWN PRODUCTS
ANDY MULICK, 201-967-9124
INGRID KERN, 215-750-1732

TURF PRODUCTS CORP.
ERNIE RIZZIO, 201-263-1234

JEP

Sales Inc.

**Specialists in
TURF MAINTENANCE EQUIPMENT**

Jacobsen
John Bean
Bunton
Gravely
Yazoo
E-Z Go
National
Smithco

(609) 585-2300

211 Yardville-Hamilton Sq. Rd.
P.O. Box 11126
Yardville, N.J. 08620



MGA FORMS GREEN COMMITTEE

The Metropolitan Golf Association has formed the MGA Green Committee. It is comprised of Golf Course Superintendents representing New Jersey, Westchester and Long Island, plus Club Green Committee Representatives and MGA Executive Committee Representatives. Bob Dickison, Ed Nickelsen, and Bob Ribbans are the NJ Delegates to the committee.

The MGA Green Committee was formed in part to emphasize the role the superintendent plays in the success of a golf club. The Committee Chairman is Arthur Weber, Old Westbury, NY. A series of Green Chairman Seminars were conducted in March. The New Jersey Seminar was held at the Montclair Golf Club in West Orange, NJ on Saturday afternoon March 16th. The seminar focused on the relationship between Superintendent and Green Chairman. Participants in the seminar were Mr. Marty Rakowitz, former Mountain Ridge Chairman; Jim Gilligan, Bedens Brook; Pete

Pedrazzi, Crestmont; Bob Dickison, Upper Montclair all GCSANJ members.

Future seminars will be conducted providing a forum for superintendents and chairman to share some thoughts.

Another role for the Green Committee will be the establishment of research projects focusing on specific problems in the Metropolitan area. The current research project centers on the moss problem on Long Island. Cornell University is scheduled to begin evaluating data as soon as the particulars are completed. The MGA Green Committee is prepared to organize a research project for any major turf problem in any of the three states in their jurisdiction. These projects would be financed through the active participation of MGA member clubs.■

METROPOLITAN GOLF ASSOCIATION
125 Spencer Place, Mamaroneck, New York 10543
(914) 698-0390

Rees Jones, Inc.

GOLF COURSE DESIGN

(201) 744-4031

COPING WITH THE WATER SHORTAGE

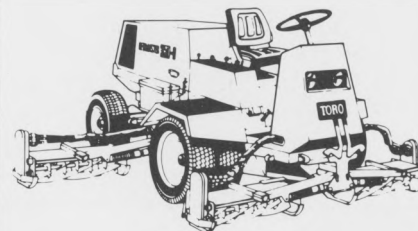
The Irrigation System

A well-designed, correctly installed and properly utilized automatic irrigation system provides the best means of conserving water. Water savings of 40% to 75% have been documented on golf courses which converted from a manual to an automatic system. However, regardless of the type of irrigation system available, it should be operating at peak efficiency and steps should be taken to increase its efficiency if the situation permits.

- Repair all leaks.
- Check nozzle size as it relates to available pressure and resulting coverage.
- Check for nozzle wear.
- Where necessary, relocate heads to improve water distribution.
- Use half-circle sprinklers where applicable.
- Check pump performance and other pumphouse systems.■

JAMES T. SNOW,
AGRONOMIST USGA GREEN SECTION

New Reelmaster® 350-D.



You'll get a good quality cut with our 5- or 7-blade 350-D. It offers a variety of great features, including hydraulically-driven reels, variable clip, independent reel suspension, large tires for minimized compaction and a height of cut ranging from 3/8" to 3". Best of all, it delivers renowned Toro durability to keep you cutting. See the Toro distributor below for details.



Storr Tractor Co.
U.S. Hwy. Route 22
Somerville, New Jersey
(201) 722-9830

MILORGANITE

BEST FOR BUILDING
HEALTHIER
TURF!

CURBS:

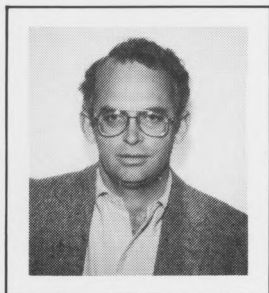
- DOLLAR SPOT
- BROWN PATCH
- SNOW MOLD
- NEMATODES



Metro Milorganite, Inc.

TONY GRASSO
JOHN WISTRAND
(914) 769-7600

MEET THE PATRON



James McC. Barrett
Irrigation Designer and Consultant

James McC. Barrett has joined the ranks of the Greenside's Patrons. Jim is a graduate of Brown University, 1965 (B.A.) and served in Uncle Sam's Navy (brown water duty) from 1965-1969. He began his career at the Crag Burn Golf Club, Elma, NY, a new construction project in 1969. 1970 saw Jim with the Florida Golf Corporation as Irrigation Installer/Job Foreman. Robert Trent Jones, Inc. beckoned in 1972 and he was a Design Associate/Irrigation Designer with the firm until 1985.

James McC. Barrett Associates was formed in 1985, specializing in golf course irrigation design. The company services include evaluation of existing systems, redesign of existing systems and design of new installations.

His current work includes the design of the new irrigation system installed at the Ridgewood Country Club, Ridgewood, NJ. He also designed the system for Flanders Valley, Flanders NJ and IBM Country Club, Poughkeepsie, NY.

Press Release

PENNSYLVANIA CONFERENCES AND TRADE SHOWS

During the course of the next year, Pennsylvania will have three Turf Conferences and two Trade Shows. One Conference and Show will be in the East (Valley Forge Convention Center) and the other in the West (Expo Mart in Monroeville). In addition, a Golf Turf Conference will be held at Penn State. For the past several years, Pennsylvania's Turf Conference and Trade Show has been held at the Hershey Lodge and Convention Center during December. The Western PA Turf and Grounds Maintenance School and Trade Show has been held in Monroeville, PA and the Southeastern PA Turf School and Trade Show has been held in Jeffersonville, PA. The format in the West will remain the same and the Conference will be held February 25-27, 1986. The name will be changed to the Western PA Turf Conference and Trade Show. The former Southeastern PA Turf School and Trade Show and the former Hershey Turf Conference will be merged into the Eastern PA Turf Conference and Trade Show and be held at Valley Forge Convention Center, January 20-22, 1986. The educational program for the Eastern and Western Conferences will be expanded and include a day of educational workshops.

The Golf Turf Conference will be held at Keller Conference Center on the Penn State Campus on November 10-12, 1985. The program for this Conference will be oriented toward the golf course superintendent and no Trade Show will be held.■

THE PENNSYLVANIA
TURFGRASS COUNCIL, INC.



QUALITY
SERVICE

FULLY
INSURED

JAMES DAVENPORT

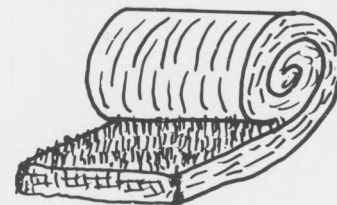
BS IN FORESTRY • U of MAINE
• NJ CERTIFIED TREE EXPERT

891-1764

WYCKOFF, N.J.

Leon's
Sod Farms

INSTANT LAWN
MERION KENTUCKY BLUEGRASS BLENDS
KENTUCKY BLUEGRASS MIXTURES



CERTIFIED SOD
GROWN ON MINERAL SOIL

SAMUEL LEON
R.D. FRENCHTOWN, N.J. 08825

PHONE (201) 996-2255

Quiz

DO YOU KNOW THE RULES OF GOLF?

SITUATION: In stroke play, a player declares a ball unplayable and lifts it. He then discovers that the ball was lying in ground under repair.

- ☐ A. The player may take relief without penalty from ground under repair.
- ☐ B. The player must proceed with the procedure for an unplayable ball because of his declaration that the ball was unplayable.
- ☐ C. The player incurs a one-stroke penalty for lifting his ball.

CORRECT CHOICE: A. Since the player did not put the ball into play under the unplayable ball Rule, he may still take relief from ground under repair without penalty.

RULES 25 and 28. Dec 28/11

Courtesy: Metropolitan Golf Association

News of Affiliate Associations

1985 GCSAA COMMITTEE ASSIGNMENTS

COMMITTEE	CHAIRMAN	STAFF CONTACT
Allied Associations in Golf	Eugene D. Baston, Chairman	John M. Schilling.
Certification Committee	Dennis D. Lyon, Chairman Donald E. Hearn, Vice Chairman	James G. Prusa
Communications/Awards Committee	James M. Taylor, Sr., Chairman	Clay Loyd
Conference and Show Committee	John E. Laake, Chairman	John M. Schilling.
Education Committee	Dennis D. Lyon, Chairman Donald E. Hearn, Vice Chairman	James G. Prusa
Election Committee.	James A. Wyllie, Chairman	Diana Green.
Finance Committee	Donald E. Hearn, Chairman.	John M. Schilling.
Government Relations Committee	Gerald L. Faubel, Chairman.	John M. Schilling.
Internal Affairs Committee	Riley L. Stottern, Chairman	John M. Schilling.
Membership Committee	John A. Segui, Chairman.	Diana Green
Nominating Committee	Robert W. Osterman, Chairman	Diana Green.
Planning Committee.	Riley L. Stottern, Chairman	John M. Schilling.
Public Relations Committee	James M. Taylor, Sr., Chairman	Bill Shelton
Standards Committee (ethics, bylaws).	James W. Timmerman, Chairman	John M. Schilling.
Tournament Committee	John E. Laake, Chairman	Diana Green
Scholarship and Research Committee	Gerald L. Faubel, Chairman.	James G. Prusa

Source: GCSAA Newsline

C. DUNLAP CONSTRUCTION CORP.

GENERAL CONTRACTOR

- CONCRETE SIDEWALK
- CURBING
- PATIOS
- ASPHALT DRIVEWAYS
- AND MUCH, MUCH MORE

For further information
please call

(201) 489-4562

or write to:

C. Dunlap Construction Corporation
109 Sussex Street
Hackensack, New Jersey



Sterilized Top Dressing

EGYPT FARMS EXCLUSIVE! All top dressing ingredients are thoroughly mixed and sterilized by indirect heat in our special process. The sand particles are actually coated with a mixture of top soil and peat humus for a completely homogenous mixture that will not separate during handling and spreading.

301-335-3700

Egypt Farms top dressing is formulated especially for the transition zone to specifications recommended by the United States Golf Association, Texas A&M, Penn State, North Carolina, and the University of Maryland.

Many years of research and testing by these leading universities have produced a soil mixture for superior growth; to maintain the best balance of percolation; to resist compaction; for good aeration; and for the retention of usable water and nutrients in the growing medium.

*Green and tee construction materials & mixes conforming to U.S.G.A. specs are also available.

Distributed by
Metro-Milorganite, Inc. (914) 769-7600
The Terre Co. (201) 473-3393
Wagner Seed Co., Inc. (516) 293-6312



American Mech Tech Inc.

Pumps

Vertical Turbine Horizontal • End Suction In-Line

Sales and Service

Stocking Distributor for Peerless Pumps

With our modern shop facility we can overhaul your pumps, deisel engines and air compressor regardless of make, type or age.

Peter J. Mauro
(201) 785-1270 Office
(201) 391-5336 Home

BACK



HIGHLIGHTS...

Bruce and Janet Peeples, (Howell Park Golf Club) are the proud parents of **Robert Carlton Peeples**. Robert was born on March 2nd and weighed in at 8 lbs. 2 oz., CONGRATULATIONS!

Steven Cadenelli is the superintendent at the new golf course project in Jackson Township, The Links at Vista Center. He will assume his duties June 1st. GOOD LUCK, STEVE. Welcome to New Jersey. Is Jackson far enough from Deal?

Ed Walsh, CGCS, (Ridgewood Country Club) is serving on the GCSAA Education Committee, chaired by Dennis Lyon, CGCS. Ed will be attending the GCSAA Education Committee meeting in San Francisco May 9-10th.

Gerald Fountain, (Trenton Country Club) is working on the Scholarship and Research Committee with **Gerald Faubel**, CGCS.

DEPARTMENT OF CORRECTIONS:

Sky Bergen's (Vaughan Seed) musical ability was mistakenly attributed to the reed instrument family. It is duly noted the instrument in question was the cornet, a valved bass instrument. Sky is interested in joining with other jazz musicians in the association to form a jam group.

Ken Kubik's (Grass Roots) name was inadvertently left off the list of scholars who appeared at the Winter Turf Program at Cook College.

HANDICAP POLICY

Dave Pease, GCSANJ Golf Chairman, requests that all GCSANJ members establish and maintain a current golf handicap. This policy will be in force as soon as possible this year. It means we all are going to have to play more golf.

Shaun Barry (Cleary Chemical) is the Handicap Committee for the GCSANJ Golf Committee.

SUPER HOBBIES

We all have a hobby of some type, even if it's watching our POA fade! Here are some of the more unique hobbies we found in the golf course trade:

Nat Binns, Hopewell Valley Country Club—builds balsa-wood model planes

Dennis DeSanctis, Wilfred MacDonald Equipment—salt water fish aquarium

John Wantz, North Jersey Country Club—an avid stamp collector (philatelist)

Leo McKnee, Terre Company—aviary breeding of zebra finches and canaries

Les Stout, Somerset Hills Country Club—still trying to rebuild his 1955 T-bird

*We'll have more in our next issue.

"ON THE COMMERCIAL SIDE"

Fluf, a liquid urea-form flowable (18-0-0), may be delivered in bulk. **Shaun Barry**, W.A. Cleary Corp., reported that fluf, manufactured by Cleary, will be delivered in bulk containers to Mt. Ridge Country Club and Shackamoyon Golf Club. This is an experiment that Shaun hopes proves successful.

Send in your **Highlights, Hobbies, or News** to be included on our "BACK 9" page.

TAVISTOCK GOLF RESULTS

J. Hyland—Closest to Pin #4 (4'8")
L. Dodge—Closest to Pin #13 (8'5")
R. Broome—Longest Drive #2

BLIND 9 BOGEY TOURNAMENT RESULTS

B. Milsap—34
D. DeSanctis—35
G. Miller—36
N. Binns—36
L. Dodge—36
M. Armstrong—36

GCSAA 1985 TOURNAMENT SCORES Palmetto Dunes—Hilton Head, S.C.

Red Flight
D. McGhee—169 2nd Gross Prize
Blue Flight
J. Schoellner—146 2nd net prize
J. McNally—149 4th net prize
J. Fenwick—152 5th net prize

Source: GCSAA Newline Vol. 10 No. 2, Feb./Mar. 1985

KENILWORTH OFFICE:
316 North 12th Street
Kenilworth, NJ 07033
(201) 272-6262

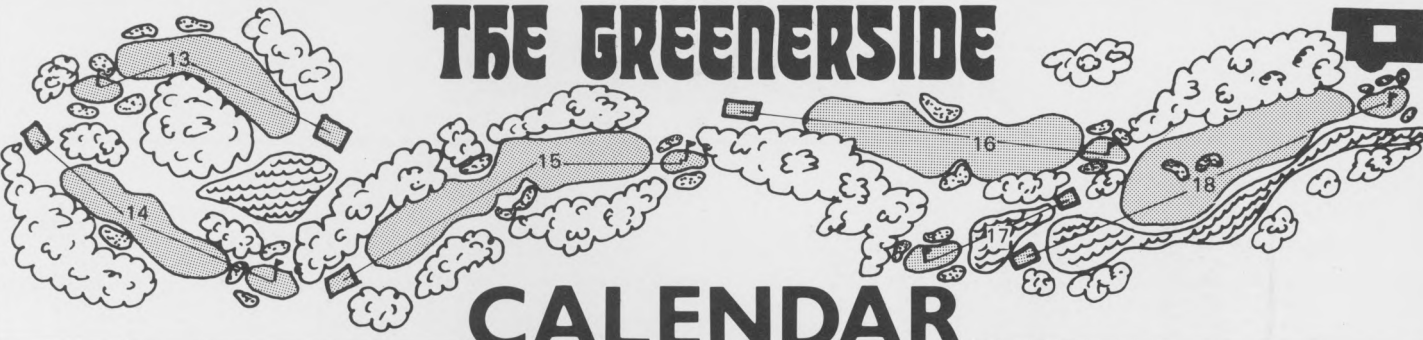


BORDENTOWN OFFICE:
Rising Sun Road
Bordentown, NJ 08505
(609) 298-6868

CONSOLIDATED STEEL & ALUMINUM FENCE CO., INC.

A Minority Business Enterprise

EUGENE T. McLAUGHLIN
VICE PRESIDENT



THE GREENERSIDE

CALENDAR

GOLF COURSE SUPERINTENDENTS ASSOCIATION OF NEW JERSEY

DATE	EVENT	LOCATION	HOST
<i>May 23</i>	GCSANJ Membership Meeting	Bamm Hollow Country Club Lincroft, New Jersey	Phil Scott Golf Course Superintendent
<i>June 4</i>	GCSANJ at the Races	Monmouth Park Race Track Oceanport, New Jersey	Ben Dziebicz Track Superintendent
<i>June 11-13</i>	NJSGA Amateur Championship	Alpine Country Club Alpine, New Jersey	Jerry Schoonmaker Golf Course Superintendent
<i>June 19</i>	USGA Women's Amateur Public Links	Flanders Valley Golf Club Flanders, New Jersey	Tom Murphy Golf Course Superintendent
<i>June 20</i>	GCSANJ Membership Meeting	Colonia Country Club Colonia, New Jersey	Chris Gaynor Golf Course Superintendent
<i>July 10-12</i>	NJSGA/First Fidelity Open Championship	Echo Lake Country Club Westfield, New Jersey	Don Pullen Golf Course Superintendent
<i>July 11-14</i>	USGA Women's Open	Baltusrol Golf Club Springfield, New Jersey	Joe Flaherty, CGCS Golf Course Superintendent
<i>August 14</i>	Irrigation Association of NJ Field Day	Reed Sod Farm Princeton, New Jersey	Linda Errickson Administrator
<i>August 21-22</i>	Walker Cup	Pine Valley Golf Club Pine Valley, New Jersey	Dick Bator Golf Course Superintendent
<i>August 27-29</i>	Michelob-NJPGA Championship	Forsgate Country Club Forsgate, New Jersey	Joe Schoen Golf Course Superintendent
<i>Aug. 27-Sept. 1</i>	USGA Men's Amateur	Montclair Golf Club Montclair, New Jersey	Ed Nickelsen Golf Course Superintendent
<i>October 1</i>	GCSANJ Field Day	Rutgers University New Brunswick, New Jersey	Dr. Henry Indyk Executive Director
<i>October 24</i>	GCSANJ Championship	Hollywood Golf Club Deal, New Jersey	Bruce Cadenelli Golf Course Superintendent
Coming in October: The Eighth Annual GCSANJ Invitational The Seventh Annual Metropolitan Area Superintendents Associations Team Championship, Stanwich Club, Greenwich, CT. Scott Niven, Golf Course Superintendent			

THE GREENERSIDE

ALAN G. CRUSE, INC.

Top Soil, Sand, Stone, Spar, & Humus
Al Cruse
(201) 992-2335

ALPINE TREE CARE, INC.

Serving Northern N.J. for 64 years
Bob Mullane - Peter Moritz
(914) 948-0101

AMERICAN MECH TECH, INC.

Irrigation, Pump Repairs and Installation —
Diesel Engines and Air Compressor Repairs
Peter Mauro
(201) 735-1270

AMERICAN TENNIS & TRACK, INC.

Tennis Courts — Repair and Const.
Jim Snagusk
(201) 778-1171

ARTESIAN PUMPING SYSTEMS

Irrigation Pumps and Repairs
Graham Every
(201) 845-7080

AQUATROLS CORP. OF AMERICA

AQUA-GRO
Demie, Andy, or Bob Moore
(609) 665-1130

BLUE RIDGE PEAT FARMS, INC.

Top Dressing, Peat, Humus, & Potting Soil
Gene Evans
(717) 443-9596

BRUEDAN CORPORATION

Bunton, Club Car, Cushman, Yamaha
Richard Lewis - Sam Baird, Jr.
1-(800) 535-1500 (914) 469-2275

CONSOLIDATED STEEL & ALUMINUM

FENCE CO., INC.
Eugene T. McLaughlin
(201) 272-6262

DAVENPORT TREE SERVICE

New Jersey Certified
John Schaus - Jim Davenport
(201) 891-1764

DOUBLE EAGLE GOLF &

INDUSTRIAL PRODUCTS
The Cushman People
(201) 521-2500

C. DUNLAP CONST. CO.

Paving, Concrete, Patios
Charlie Dunlap
(201) 489-4562

EGYPT FARMS, INC.

Golf Green Top-Dressing
John Strickland
(301) 335-3700

FERTL-SOIL TURF SUPPLY, INC.

Greens Topdressing/Turf Supplies
Martin Futyma
(201) 388-0100

GARDEN STATE GOODALL

Goodall Turf Equipment
Phil Mowery - Stan Stevenson - Dave Walter
(609) 799-4101

GEO. SCHOFIELD COMPANY, INC.

Sand, Stone, Mulch Chips, Compost Plus
(201) 356-0858

GLENMORE LANDSCAPE SERVICE

Irrigation Installations
Glenn S. Moore
(914) 764-4348

GOLF BY JANIS INC.

Golf Course Construction, Renovation, Irrigation
Al Janis
(301) 641-8156

GRASS ROOTS INC.

Turfgrass Supplies
Ken Kubik (201) 361-5943
Bert Jones (201) 686-8709

JAMES McC. BARRETT ASSOCIATES

Golf Course Irrigation
Design and Consulting
(201) 744-8237

JEP SALES, INC.

Turf Maintenance Equipment
Jack Poksay - Tony Ripple
(609) 585-2300

KOONZ SPRINKLER SUPPLY COMPANY

Rainbird Irrigation Equipment
William Koonz
(201) 379-9313

LESCO, INC.

For all your golf course needs
Rocky River, Ohio 44116
Toll Free — (800) 321-5325

LEBANON CHEMICAL CORP.

Country Club Fertilizers & Chemicals
Bill Nist
(201) 329-4011

LEON'S SOD FARMS

Certified Sod Grown on Mineral Soil
Samuel Leon
(201) 996-2255

LOFT'S PEDIGREED SEED, INC.

Seed for the Turfgrass Industry
Richard Hurley
(201) 356-8700

LONGO MOTOR & PUMP, INC.

Motors - Pumps
Rewind, Repair, Sales
(201) 539-4141 24 hours

MALLINCKRODT, INC.

Turfgrass Chemicals
John Magnus, Regional Rep.
(609) 654-0476

METRO MILORGANITE, INC.

Turfgrass Supplies
Tony Grass - John Wistrand
(914) 769-7600

MID-ATLANTIC EQUIPMENT CORP.

Golf Cars & Turf Maintenance Equipment
Paul Brandon - Dave McDermott
(215) 489-1400

MONTCO PRODUCTS CORPORATION

Surf Side & Zap
Robert Oechsle
(215) 628-3144

MOUNTAIN TURF PRODUCTS

Turfgrass Supplies
Richard Grant
(717) 646-7220

O.M. SCOTT PROTURF

Fertilizer, Chemicals
Fran Berdine (914) 361-4105
Bob Dwyer (201) 665-9728

PARTAC PEAT CORPORATION

Golf Course Top-Dressing
James Kelsey
(201) 637-4631

PRO LAWN TURF PRODUCTS

Services for the Professional
Andrew Mulick (201) 967-9124
Ingrid A. Kern (215) 750-1732

ROCKLAND CHEMICAL CO., INC.

Turfgrass Chemicals & Fertilizer
William Dunn - Steve Stys
(201) 575-1322

REES JONES, INC.

Golf Course Design
Rees Jones
(201) 744-4031

R&S LANDSCAPE CO., INC.

Golf Course Construction
Claus I. Raven
(201) 278-0616

SEACOAST LABORATORIES, INC.

Granular Turfgrass Pesticides
Richard Baker
(201) 257-7772

STANDARD GOLF COMP.

Pro Line Golf Course Equipment
Steve Tyler - Chief Waseskuk
(319) 266-2638

STEVEN WILLAND INC.

Ransomes Grass Machinery
Bill Rapp - Kurt Wagner
(201) 227-5612

STORR TRACTOR COMPANY

Turf Maintenance Equipment, Irrigation
Paul Deschamps - Gene Tarulli - Paul Granger
(201) 722-9830

THE TERRE COMPANY

Turfgrass Supplies
Byron Johnson - Leo F. McNee
(201) 473-3393

TURF PRODUCTS CORPORATION

Turfgrass Supplies
Ernie Rizzio - Buddy Rizzio
(201) 263-1234

VAUGHAN'S SEED CO.

Turfgrass Seed and Supplies
Sky Bergen (201) 635-6469
(201) 938-4200 (800) 942-7706

VIC GERARD GOLF CARS, INC.

New & Reconditioned Golf Cars
Vic Gerard, Jr. (201) 367-5030 (home)
(201) 938-4464 (office)

W.A. CLEARY CHEMICAL CORP.

Turfgrass Chemicals
Shaun Barry
(201) 247-8000

WILFRED MacDONALD, INC.

Turf Maintenance Equipment
Ed Lott - Ed Rockhill - Bill Luthin -
Dennis DeSanctis
(201) 471-0244

The listed PATRONS are the sole financial supporters of this publication. Without them this newsletter would not exist. Please give strong consideration to supporting them whenever possible. If you don't support them, they will not be able to support us.