

PLAT BOOK

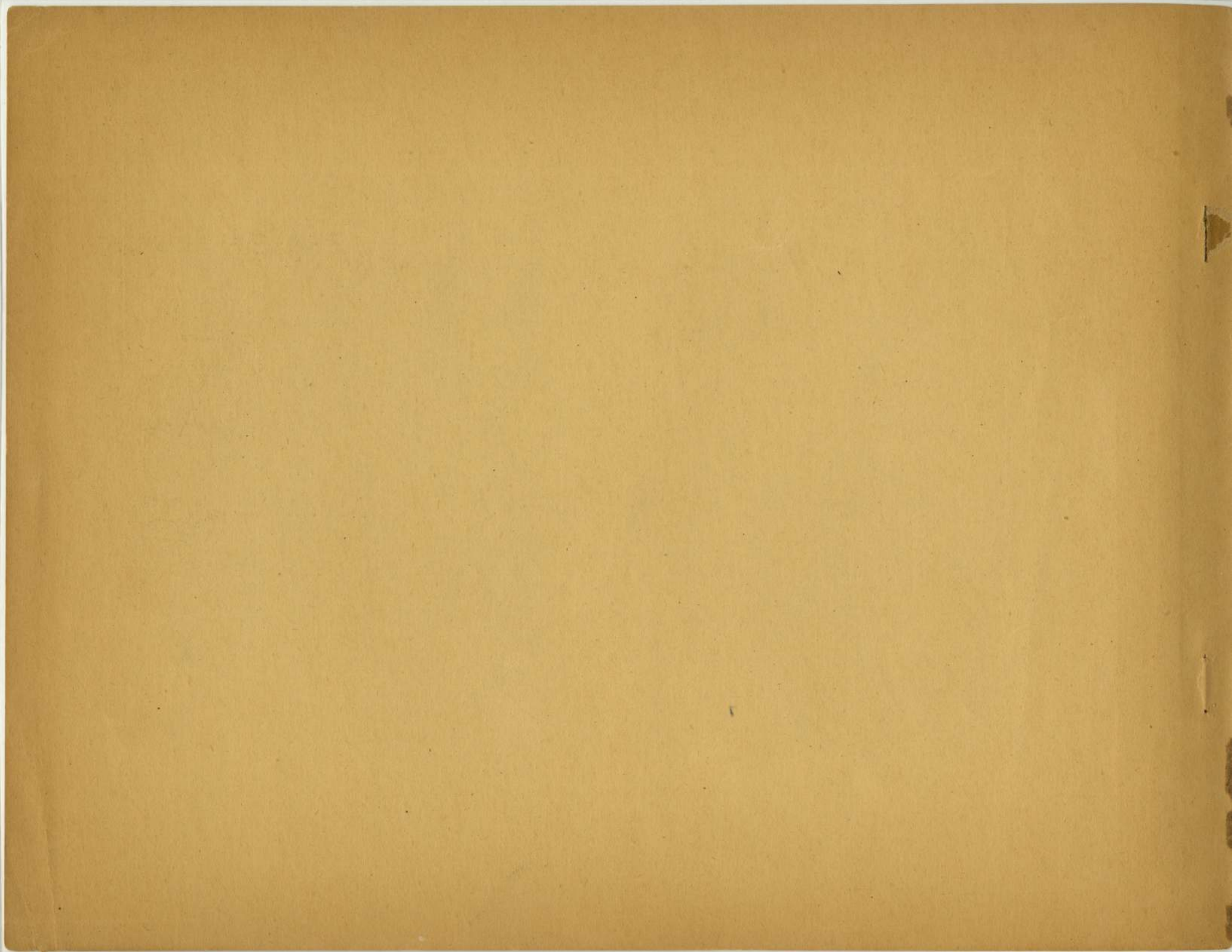
OF

ALPENA COUNTY,
MICHIGAN

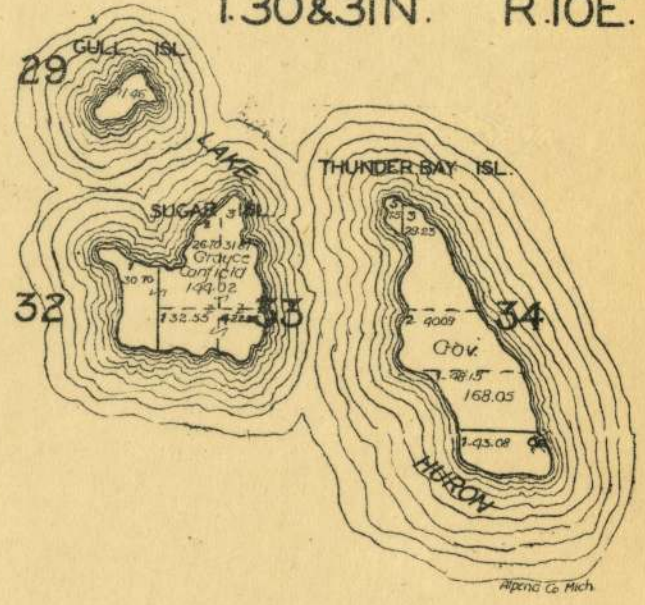
Published by

W.W.HIXSON & CO.

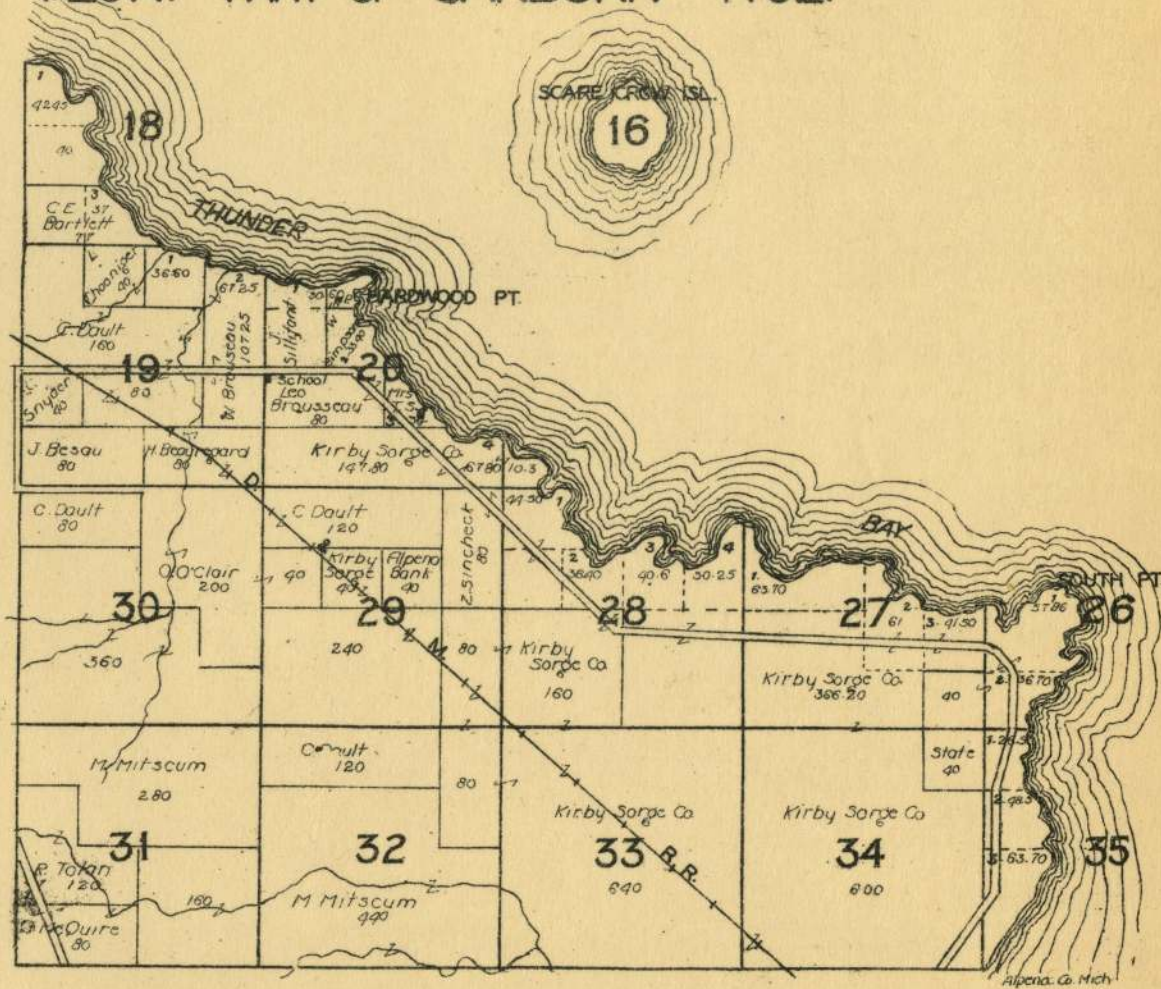
Rockford, Illinois



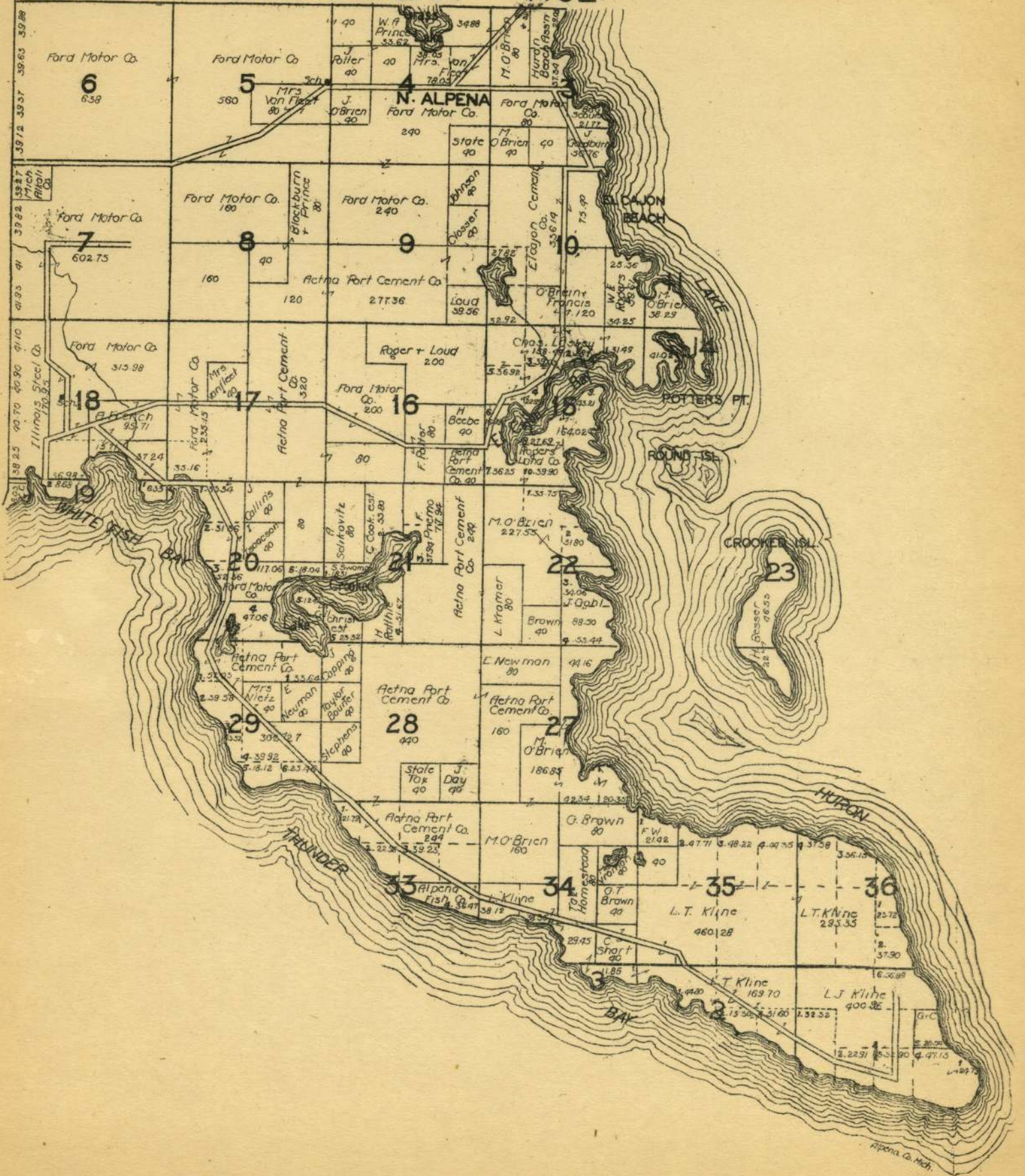
T.30&31N. R.10E.



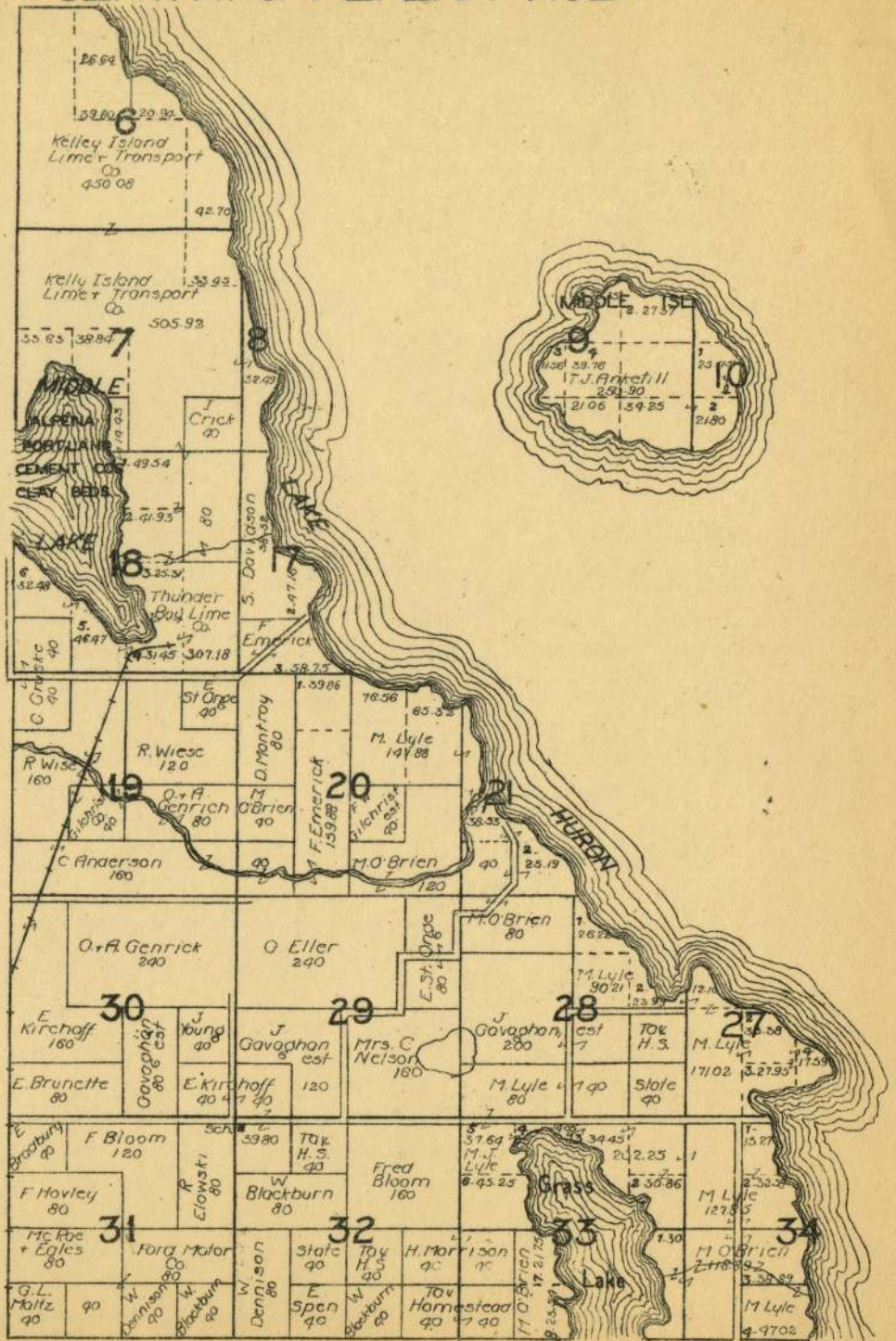
T.29N. PART OF SANBORN R.9E.



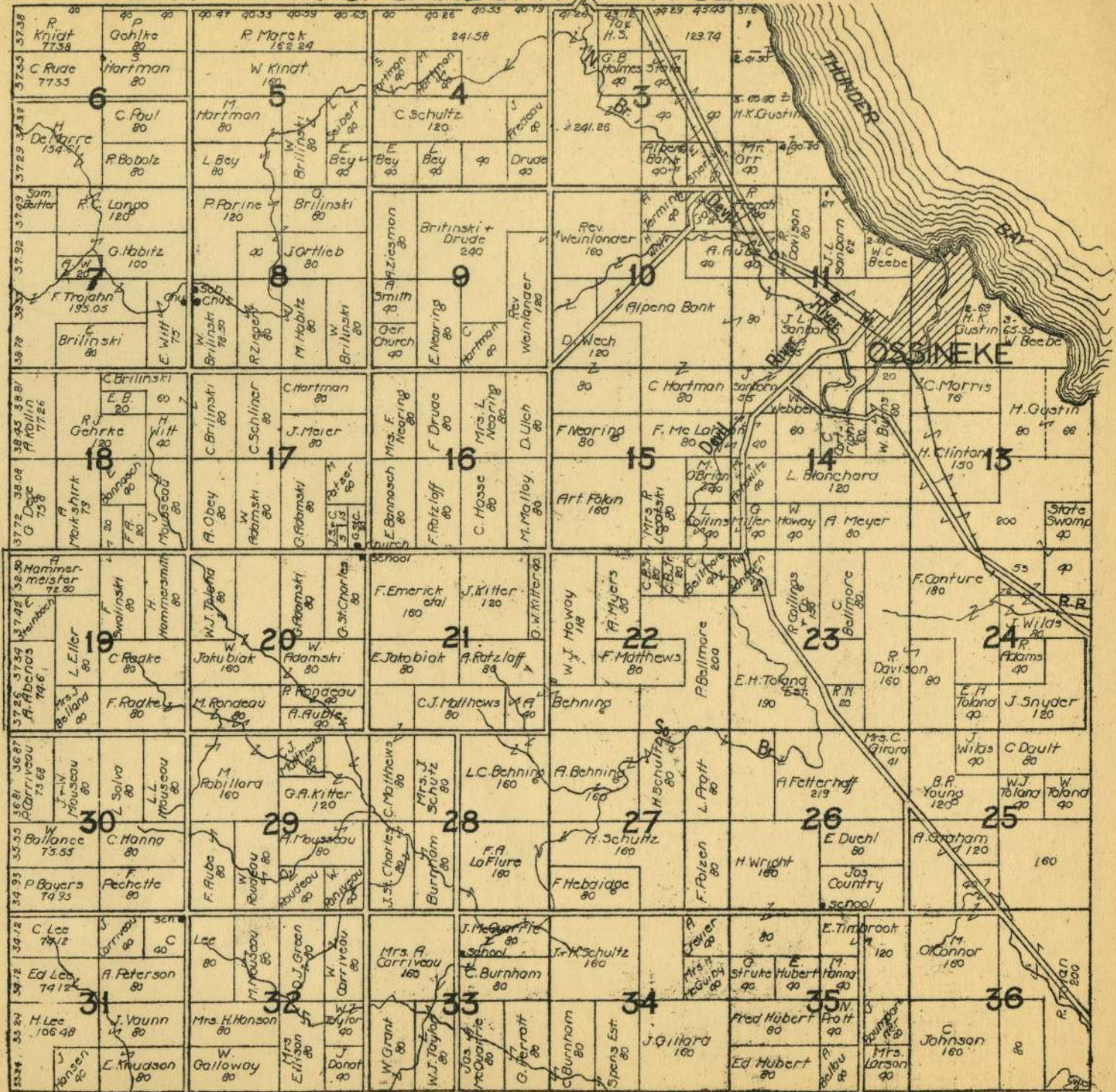
T.30 & 31N. PART OF ALPENA R.9E.



T.32N PART OF ALPENA R.9E.



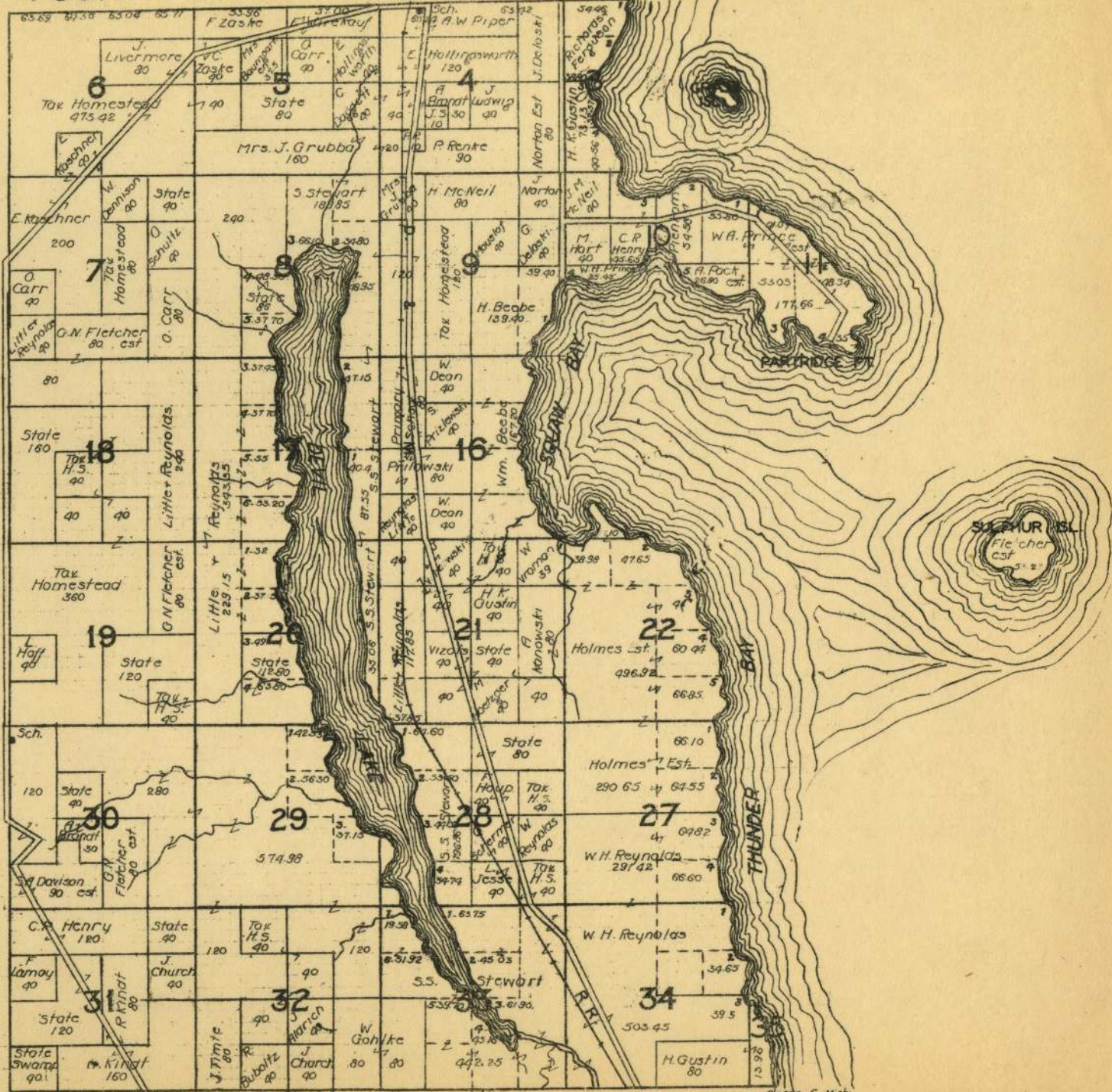
T.29N. PART OF SANBORN R. 8E.



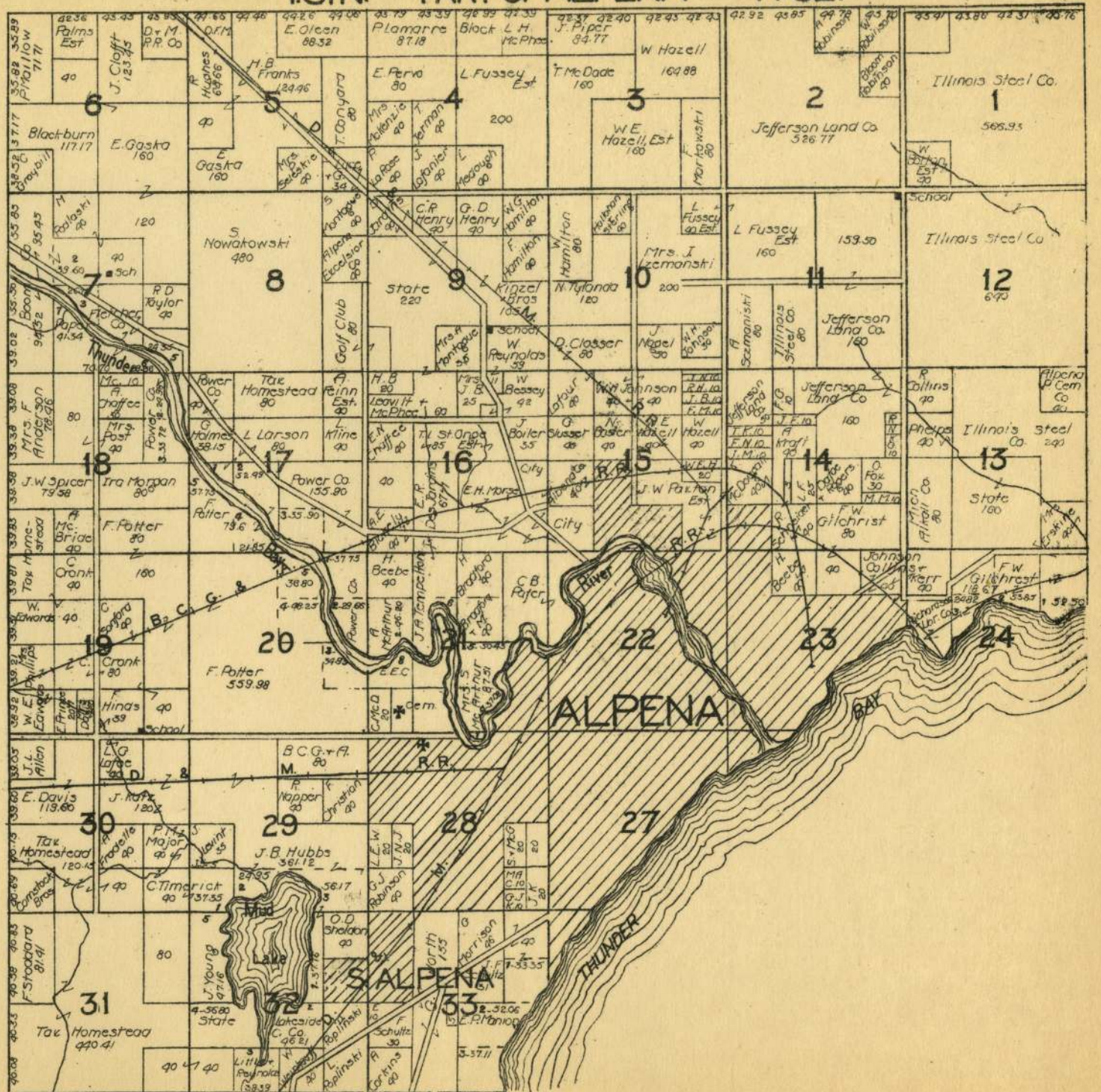
T.30N.

PART OF ALPENA

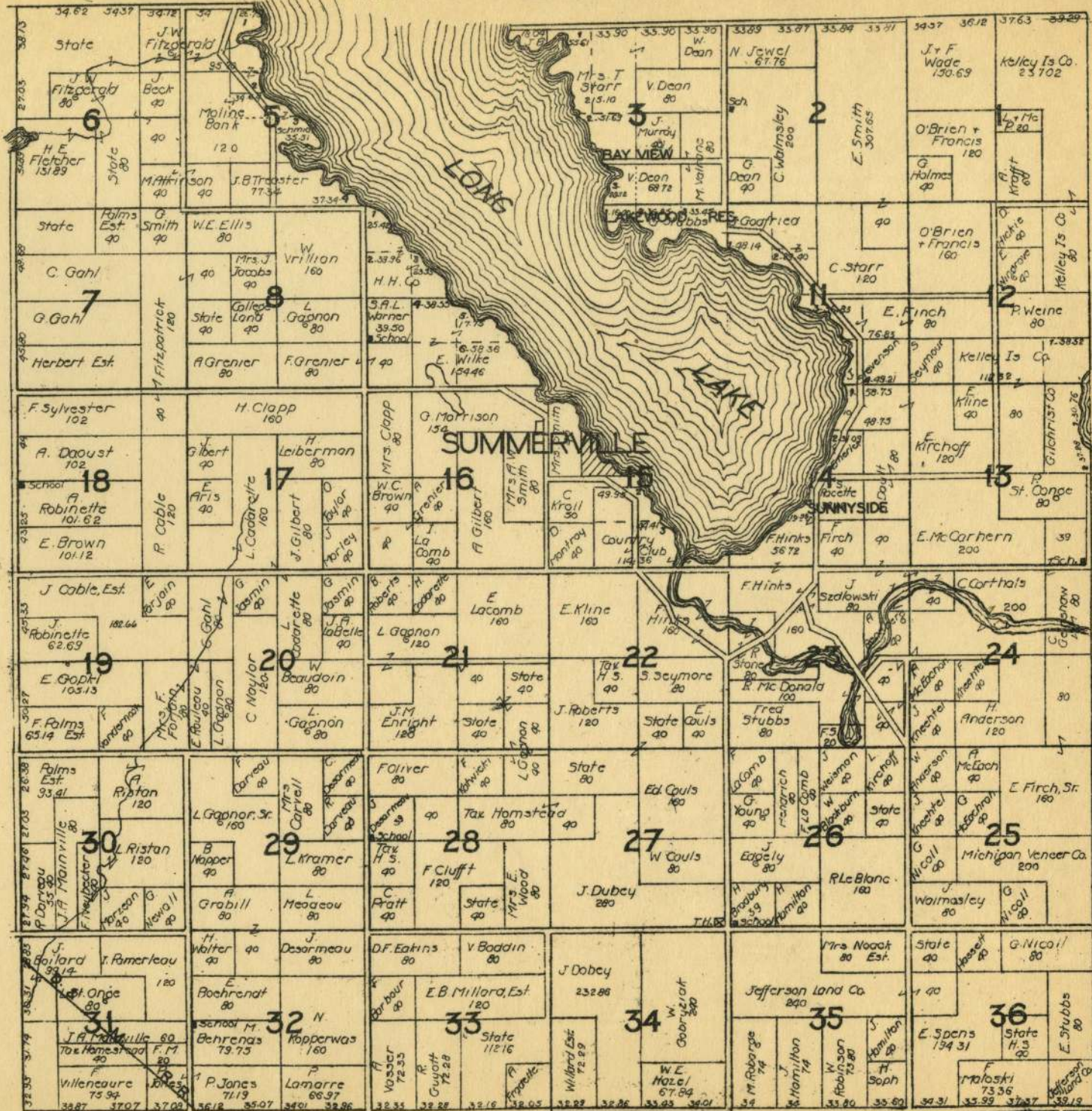
R.8E.



T.31N. PART OF ALPENA R.8E.



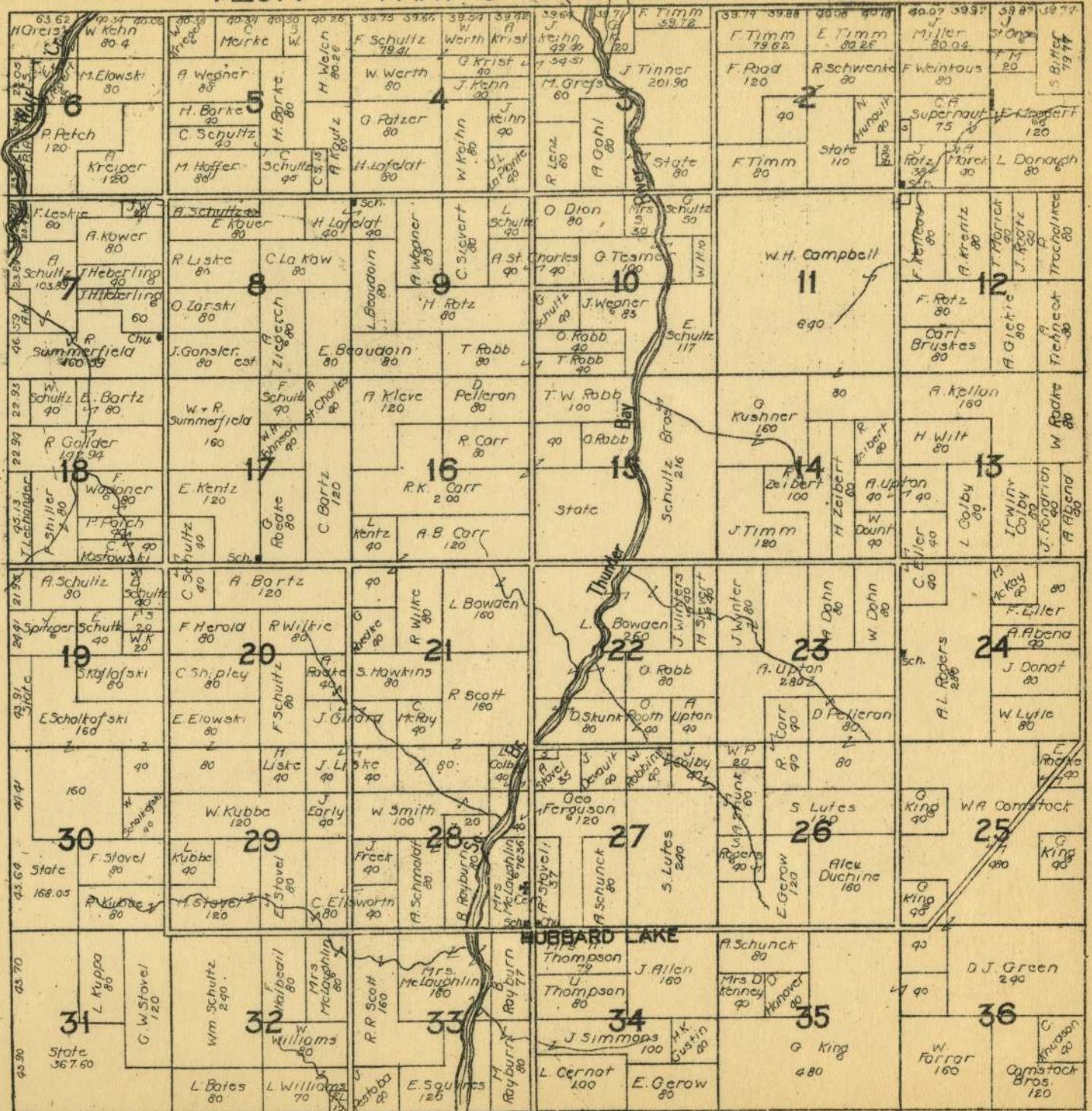
T.32N. PART OF ALPENA R.8E.



T.29N.

PART OF OSSINEKE

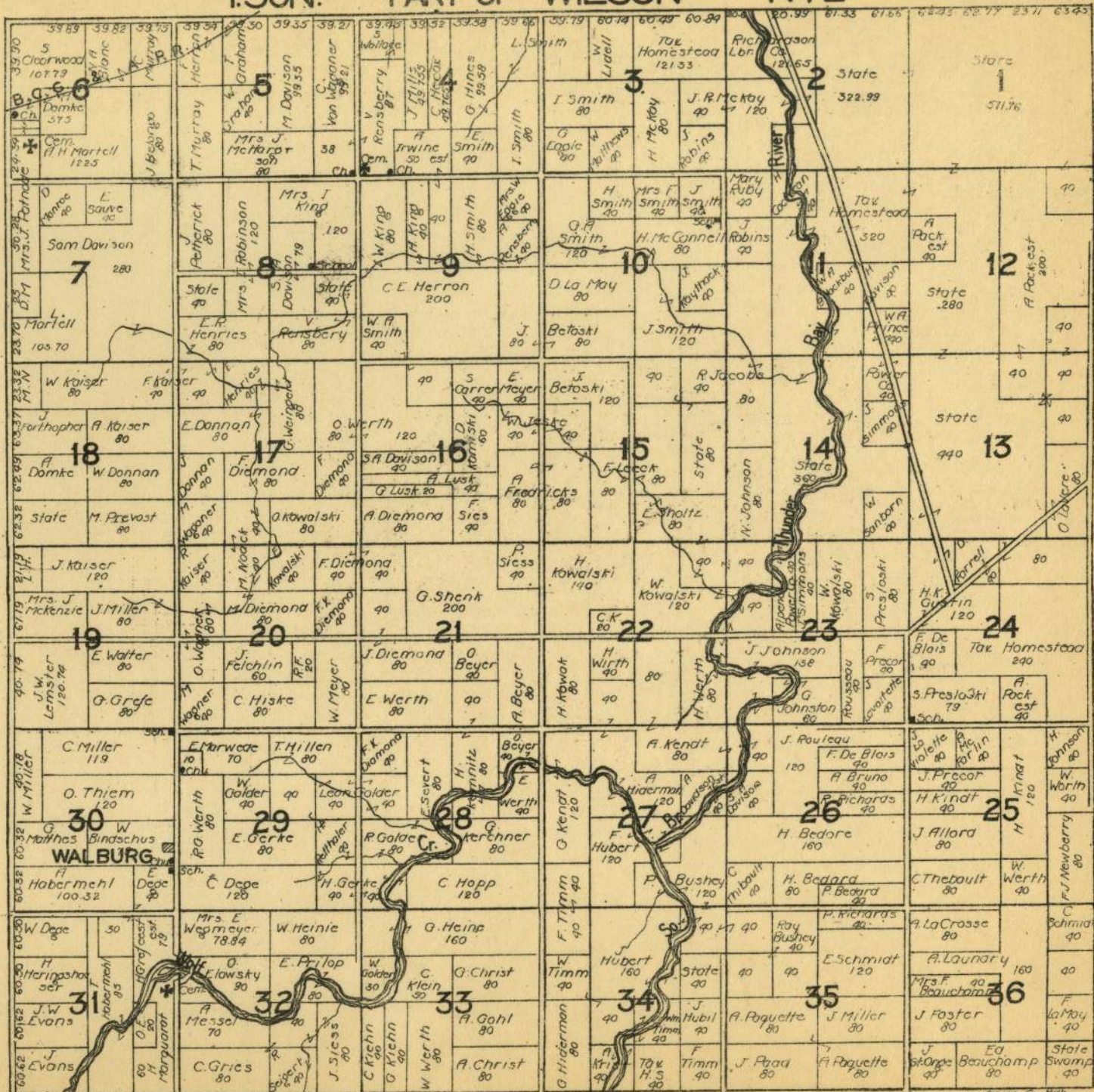
R.7E.



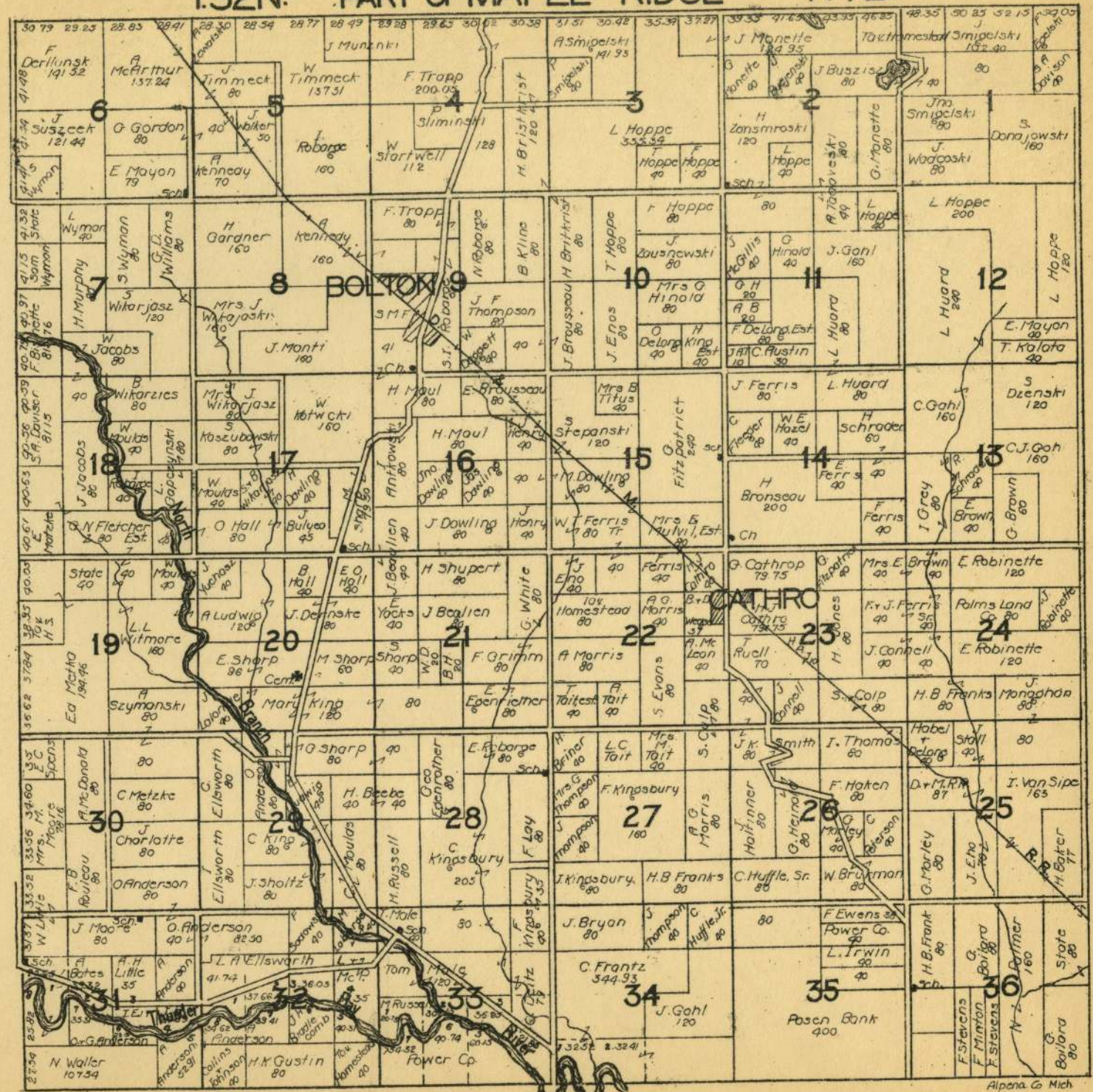
T.30N.

PART OF WILSON

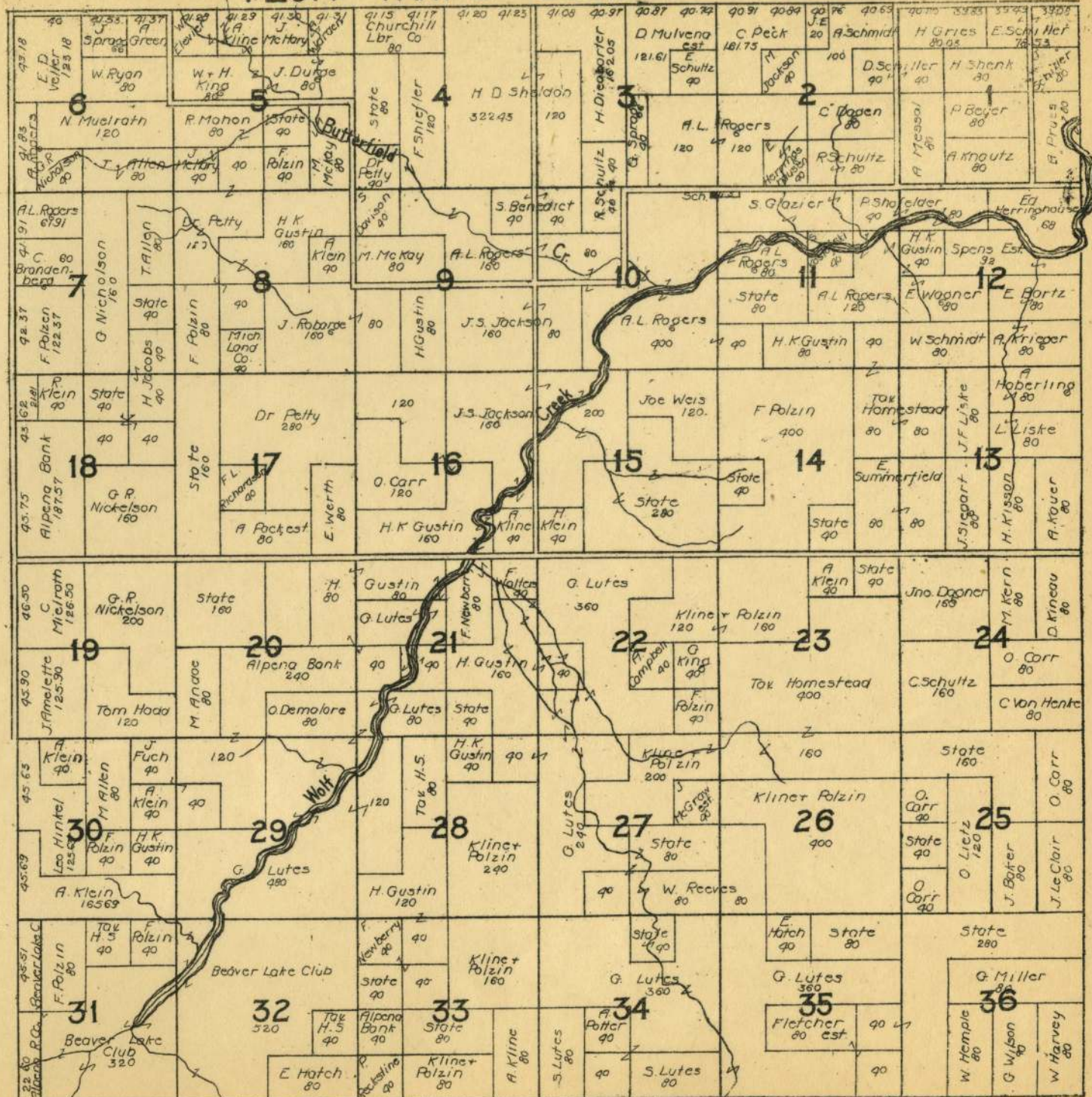
R.7E.



T.32N. PART OF MAPLE RIDGE R.7E.

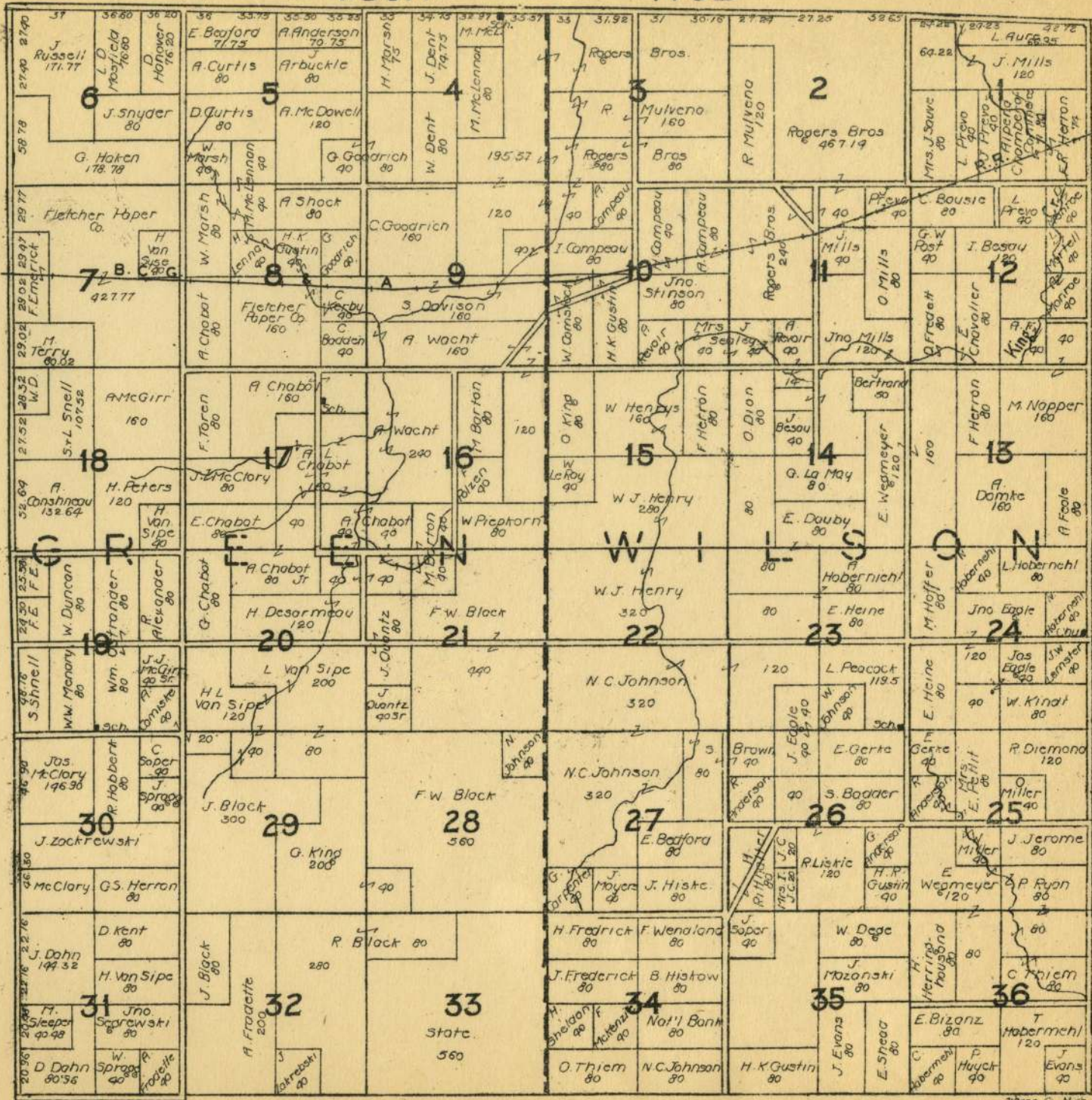


T.29N. PART OF OSSINEKE R.6E.

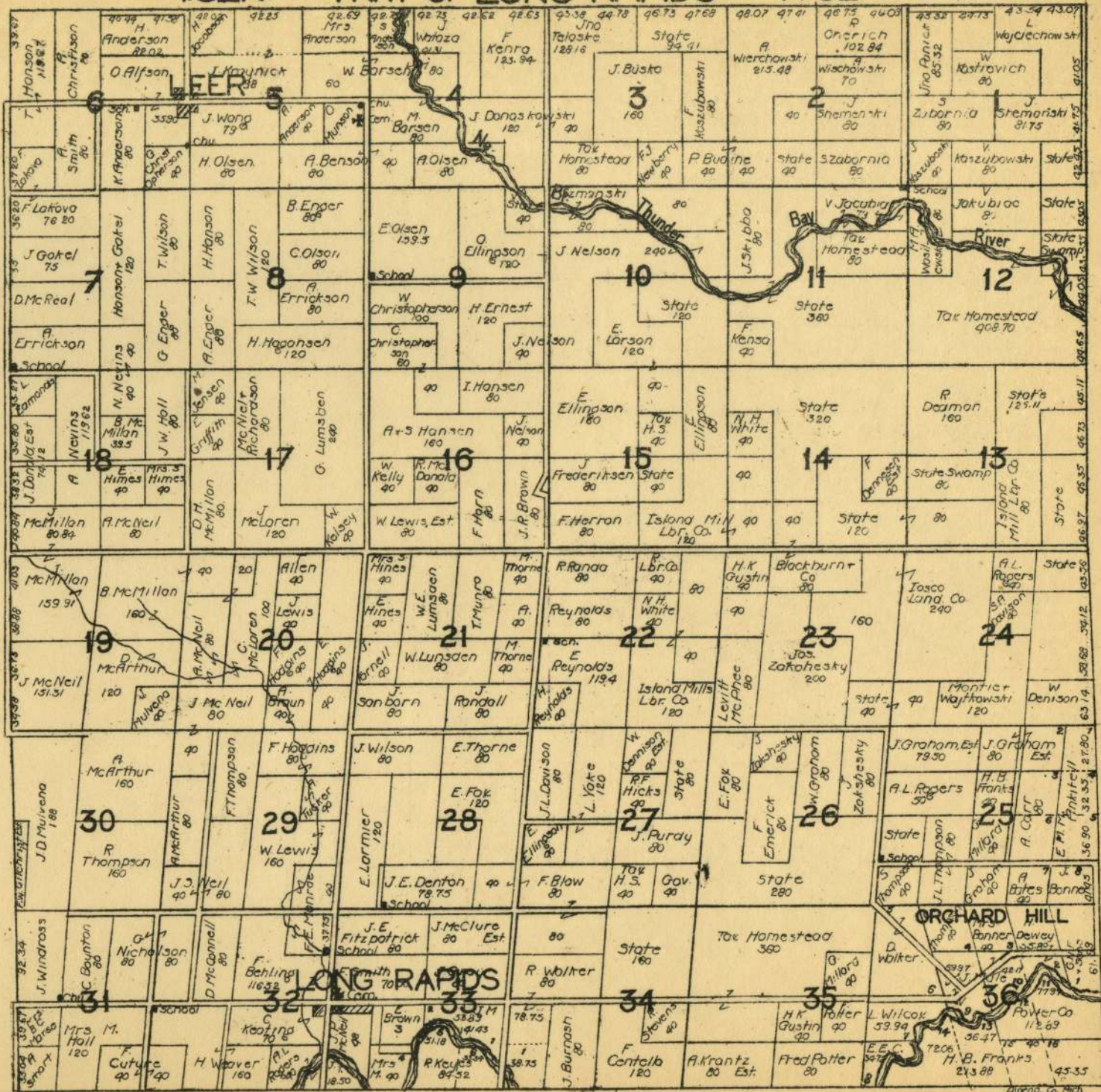


T.30N.

R.6E.



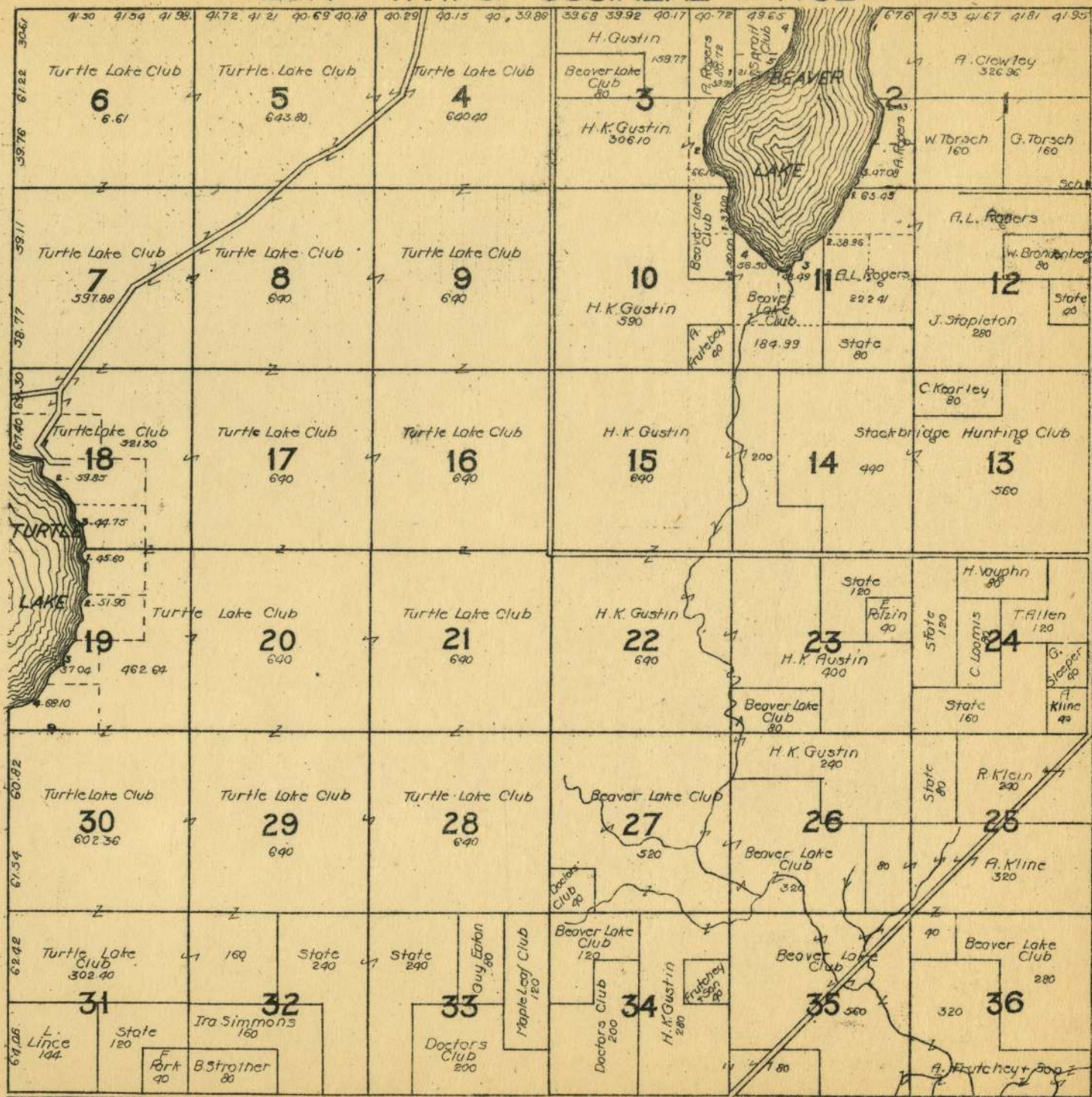
T.32N. PART OF LONG RAPIDS R.6E.



LONG RAPIDS

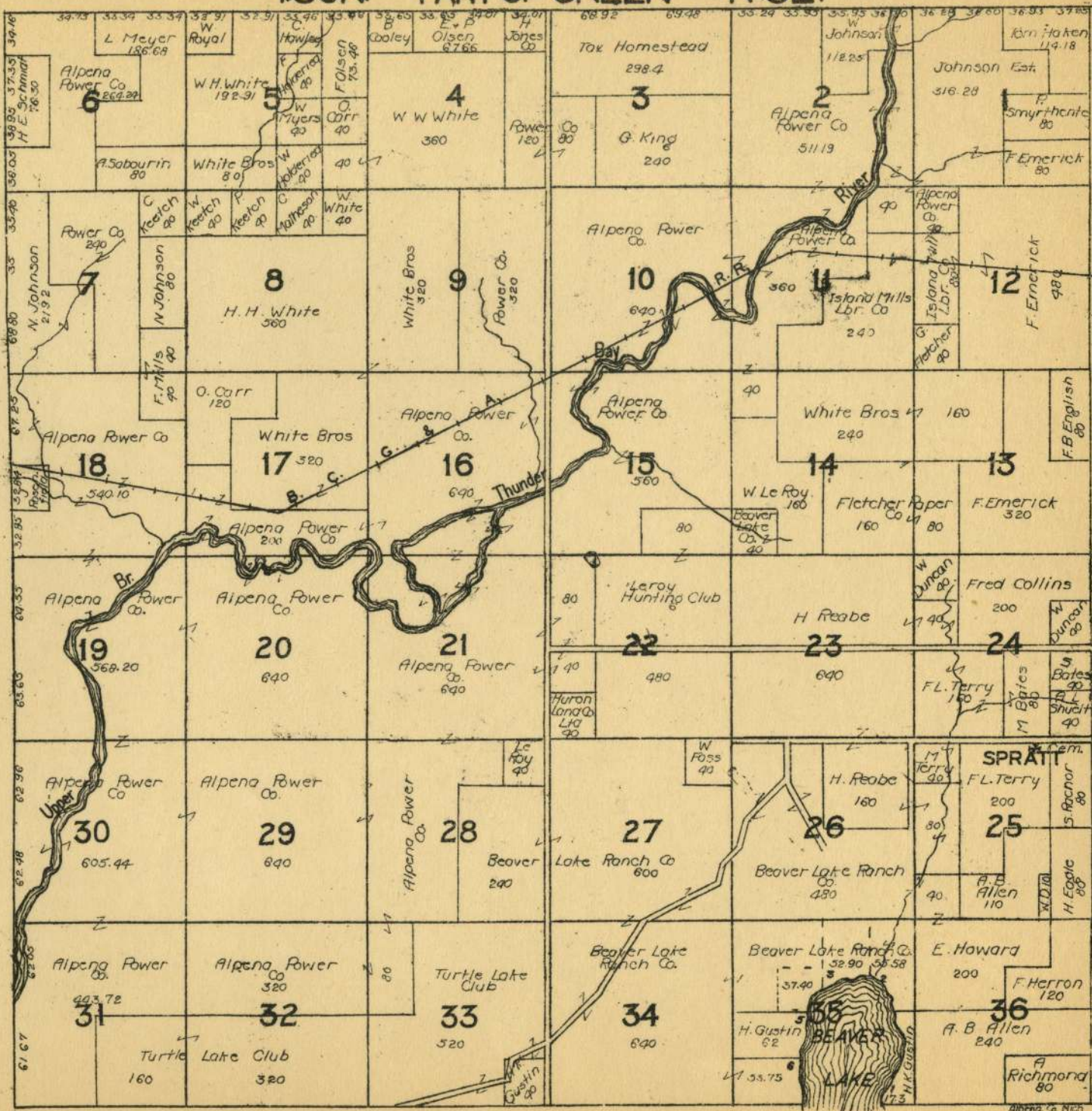
ORCHARD HILL

T.29N. PART OF OSSINEKE R.5E.



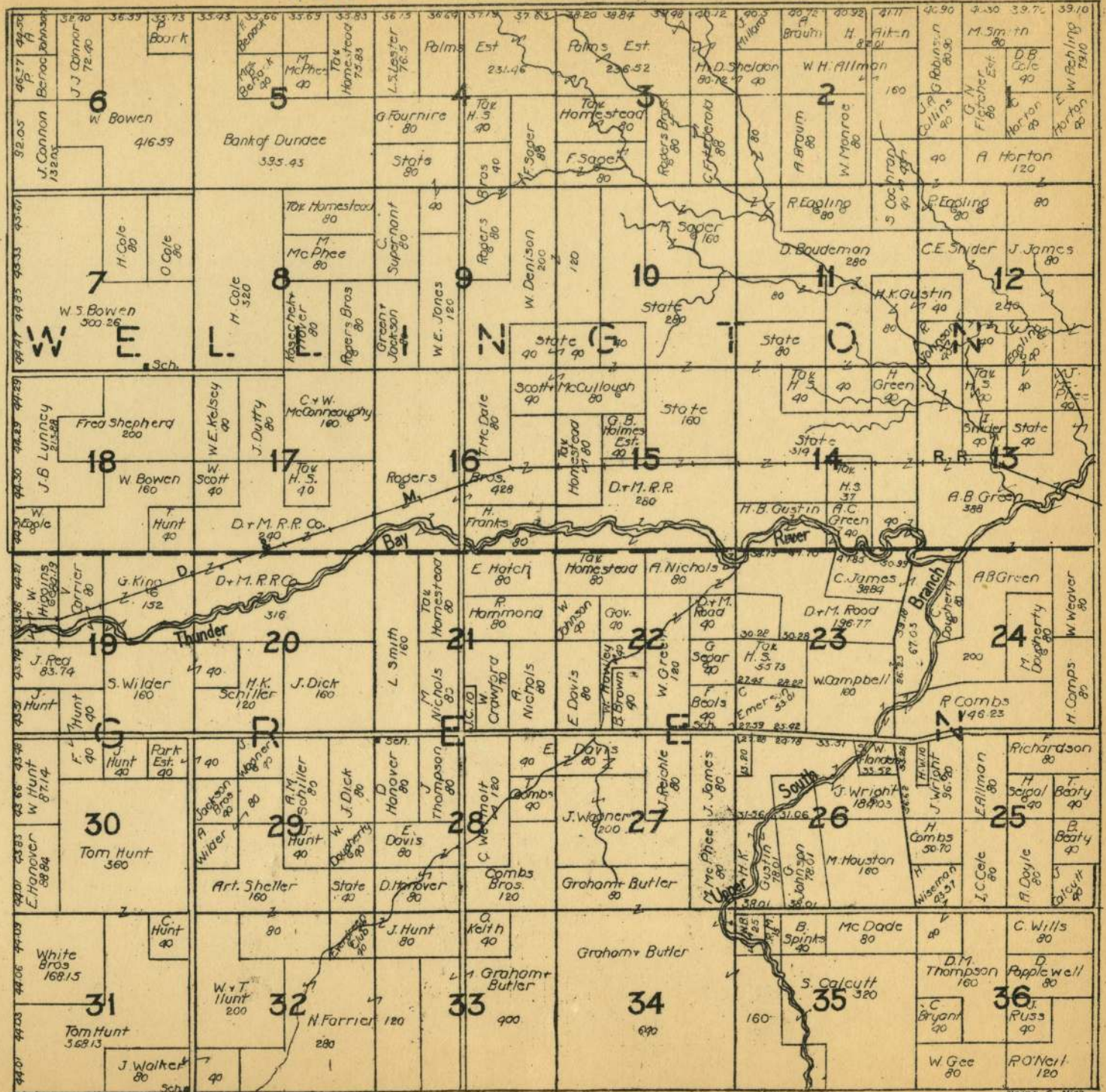
Alpena Co. Mich.

T.30N. PART OF GREEN R.5E.



T.31N.

R.5E.



T.32N. PART OF WELLINGTON R.5E.

