

1913  
14  
86  
195-2

# PLAT BOOK

OF

*Ingham Co.*

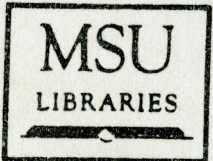
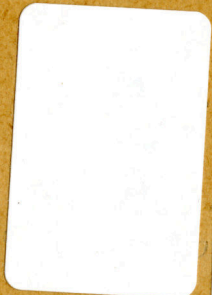
IVAN F. SCHNEIDER  
Associate Professor - Research  
Soil Science Department  
Michigan State College  
East Lansing, Michigan

Published by W. W. HIXSON & COMPANY, Rockford, Illinois

DO NOT DESTROY

**LIBRARY**  
**Michigan State**  
**University**

MAPS

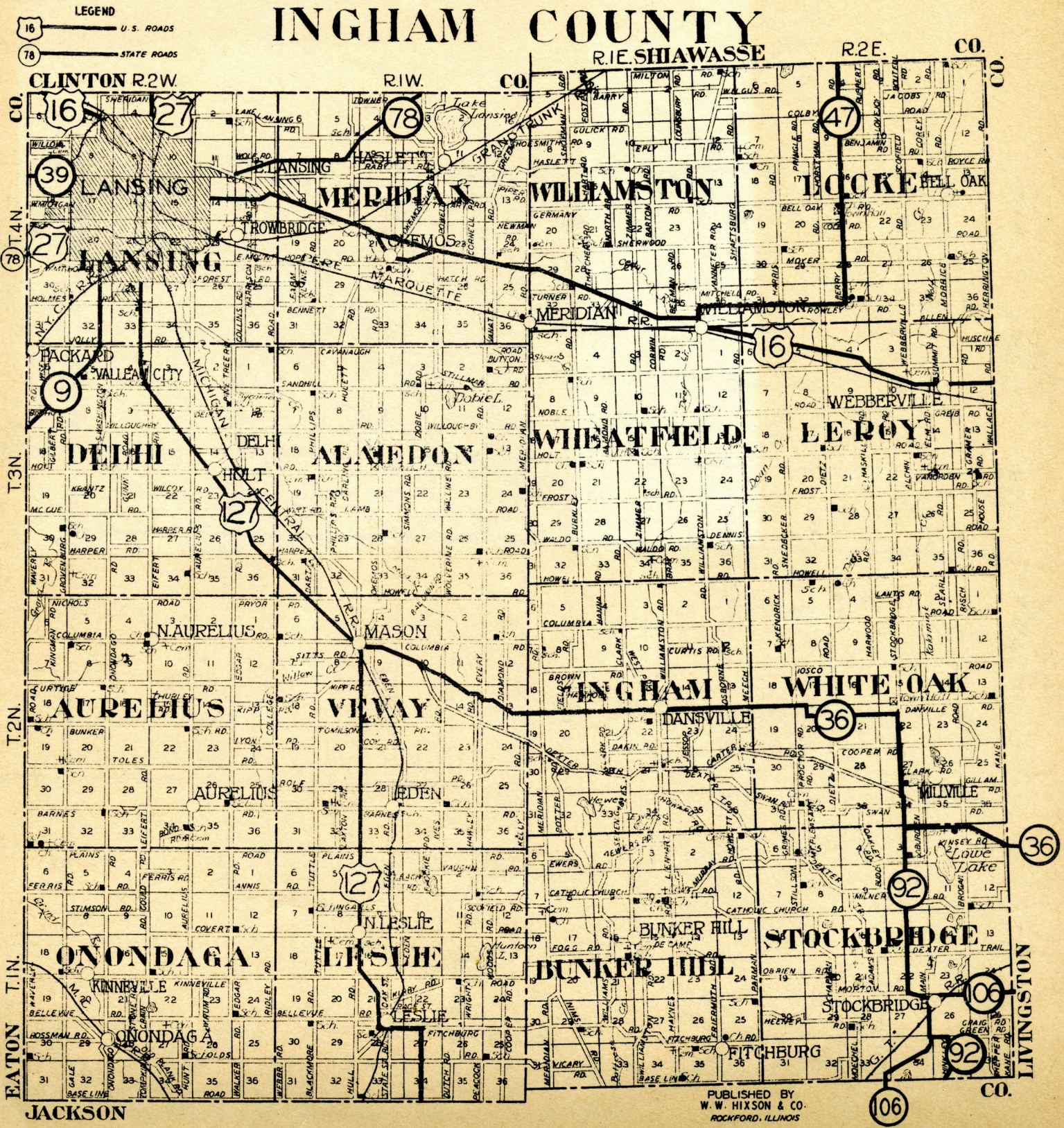


RETURNING MATERIALS:  
Place in book drop to  
remove this checkout from  
your record. FINES will  
be charged if book is  
returned after the date  
stamped below.

**ROOM USE ONLY**  
**MAP LIBRARY**

197-1098

# INGHAM COUNTY



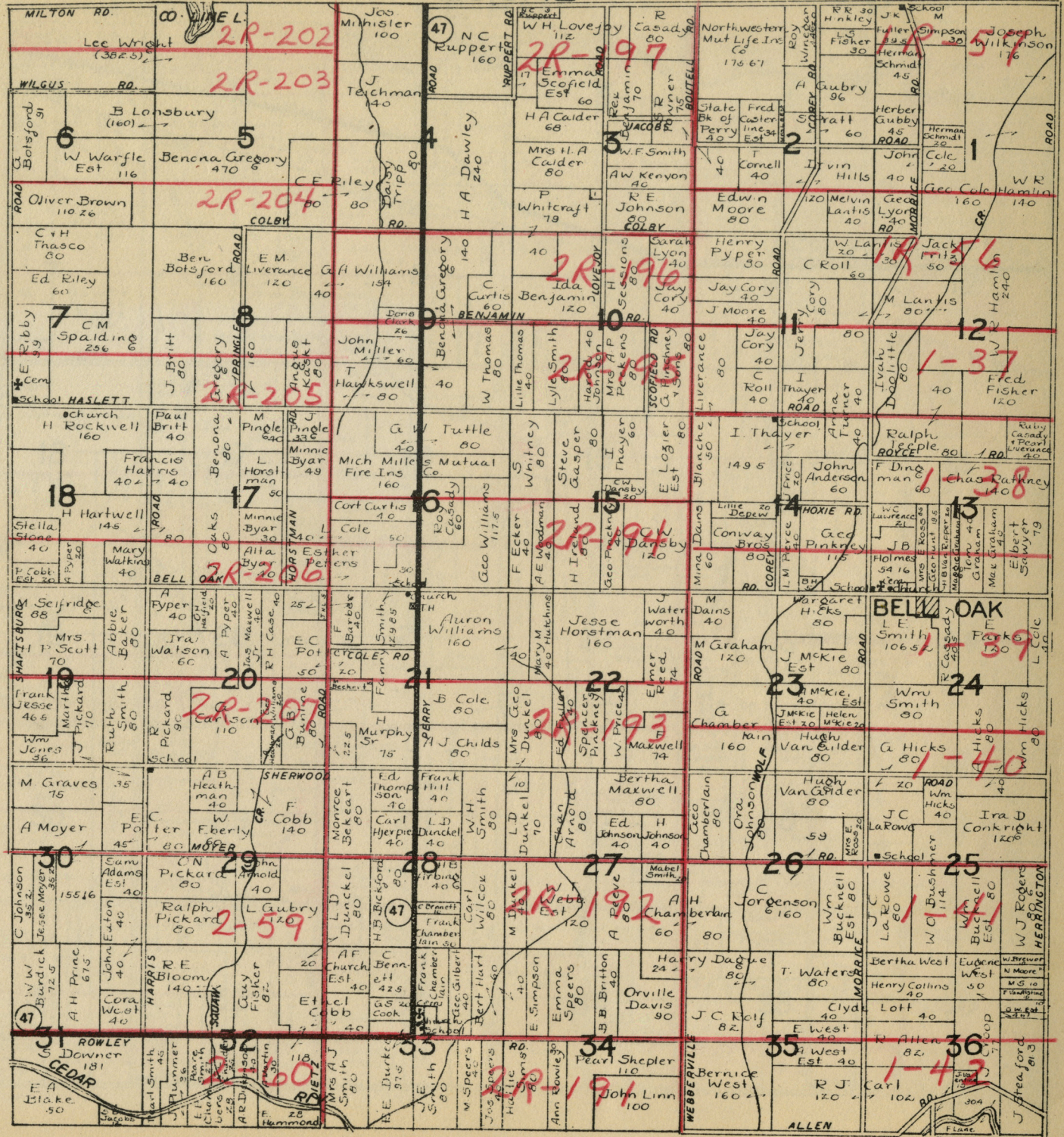
**LEGEND**  
 16 — U.S. ROADS  
 78 — STATE ROADS

PUBLISHED BY  
 W. W. HIXSON & CO.  
 ROCKFORD, ILLINOIS

T. 4N.

LOCKE

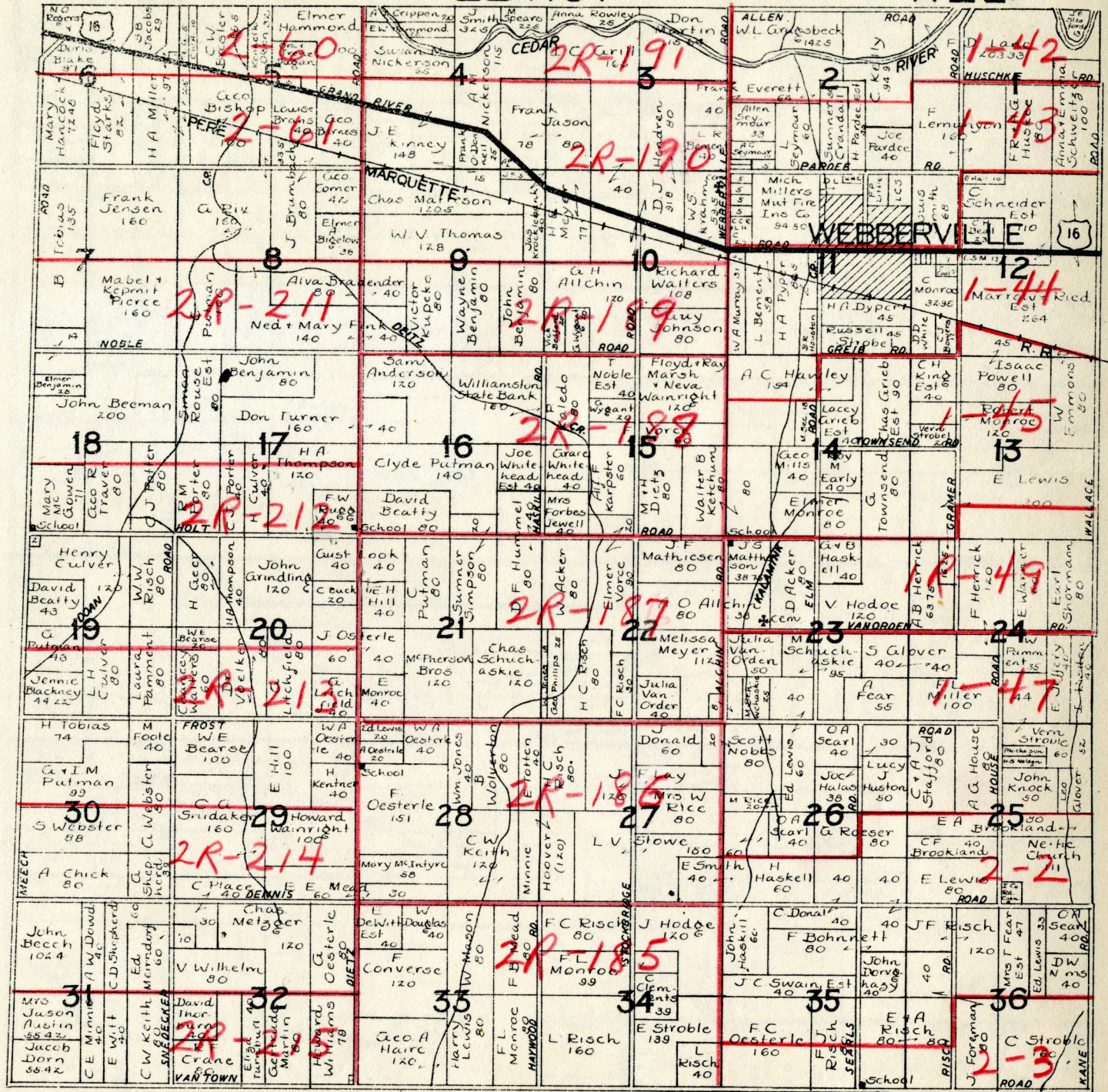
R. 2E.



T.3N.

LE ROY

R.2E.



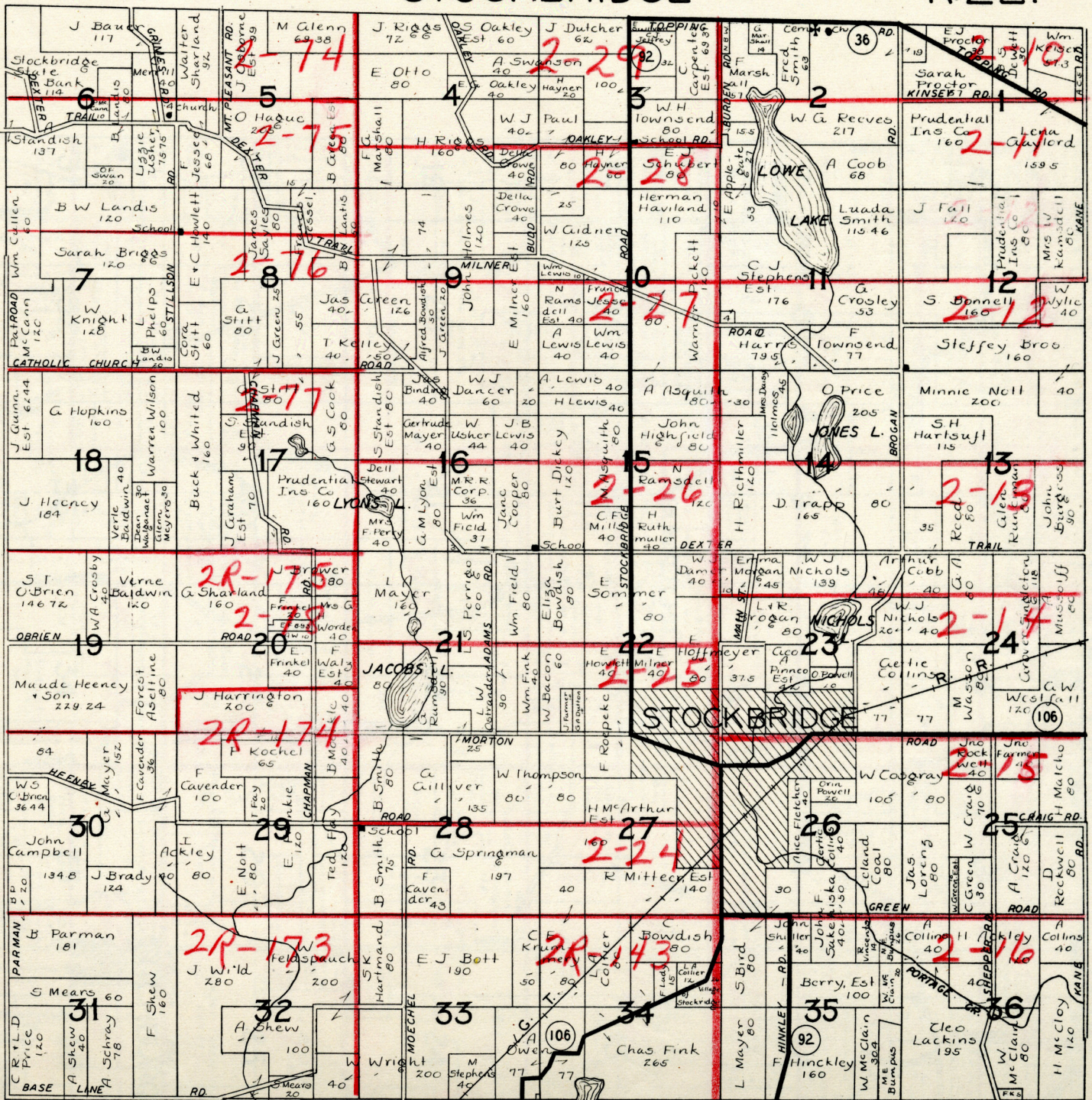
Ingham Co Mich



T. 1 N.

STOCKBRIDGE

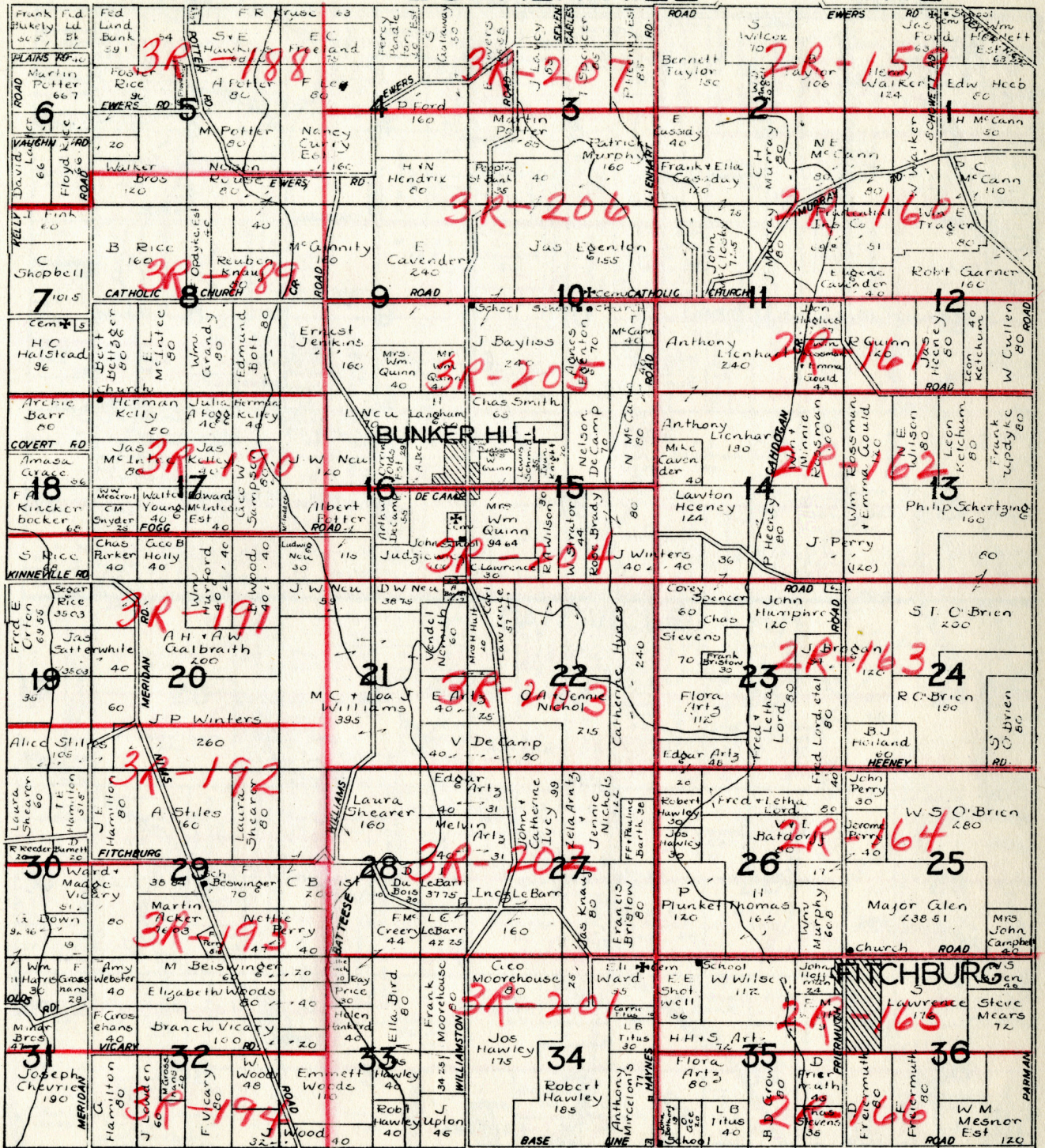
R. 2 E.



T.1N.

BUNKER HILL

R.1E.

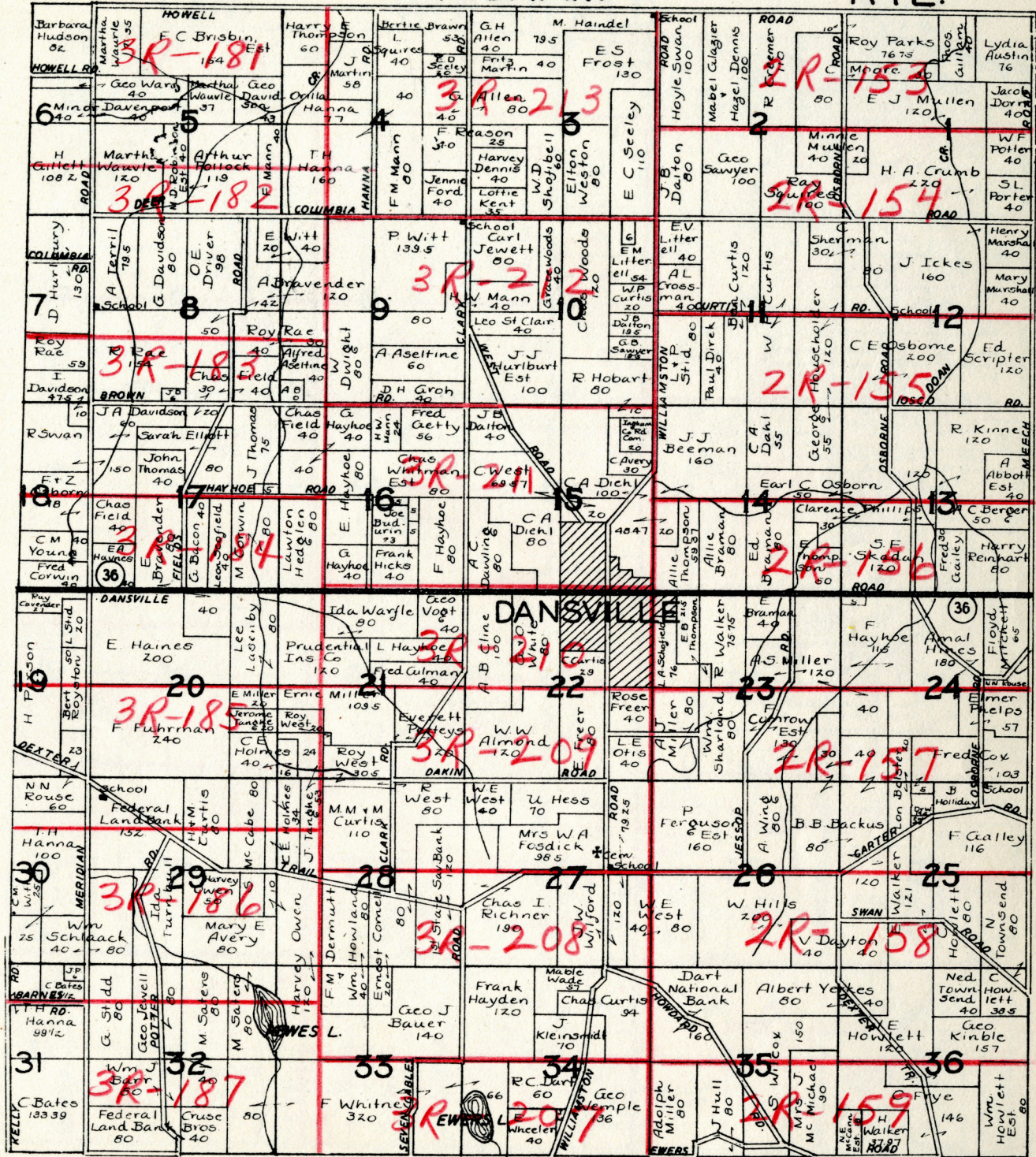




T. 2N.

INGHAM

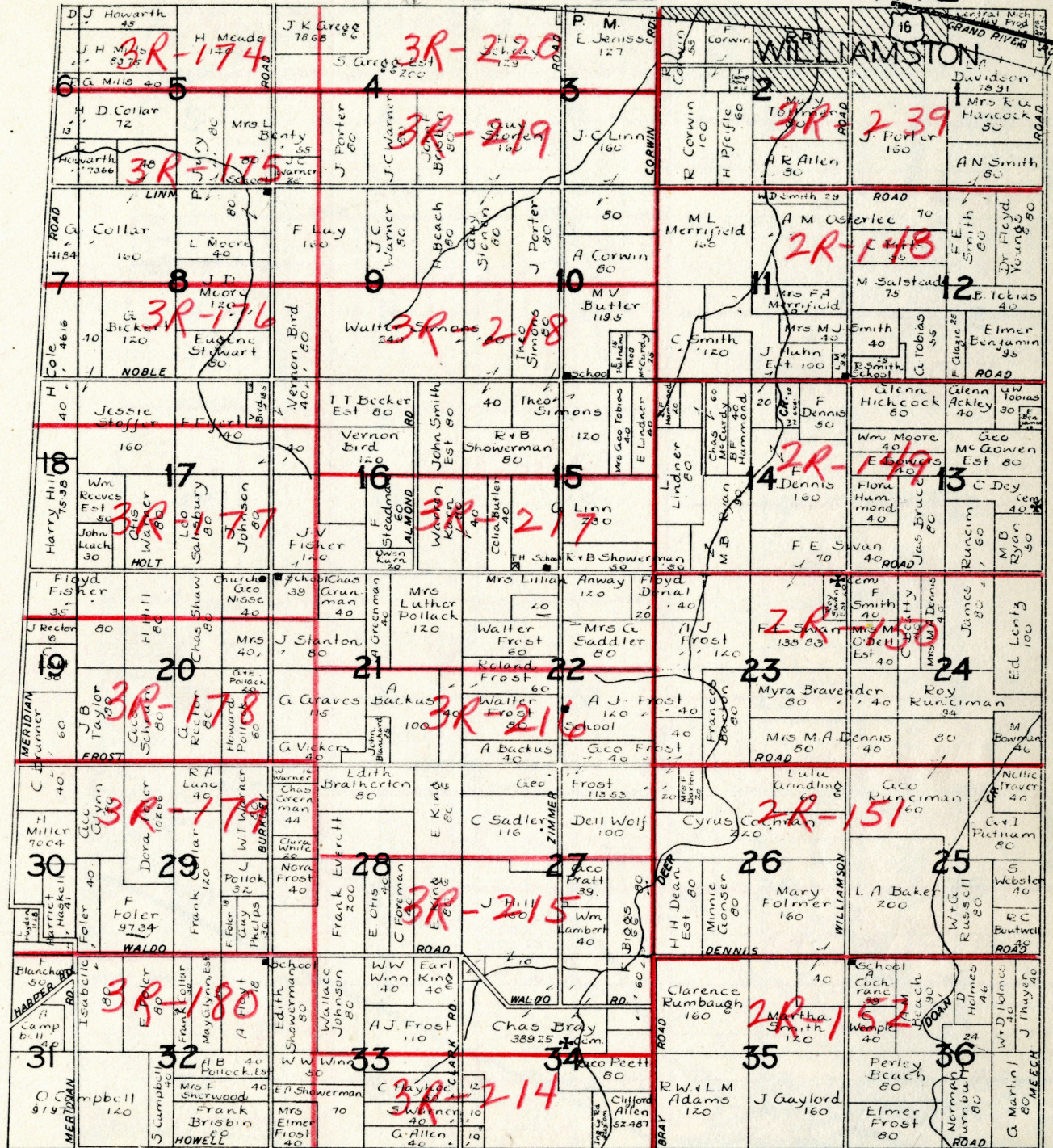
R. 1E.

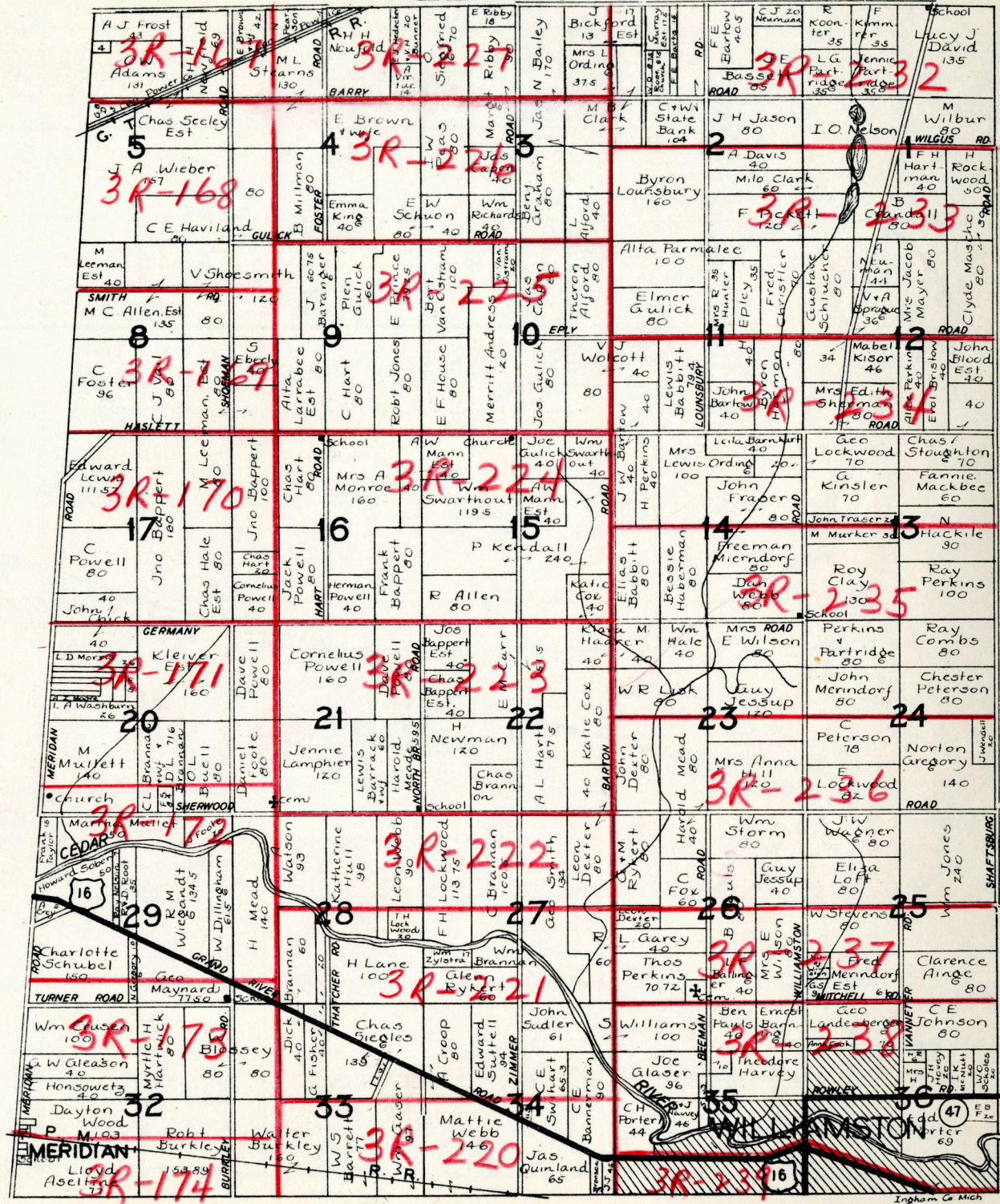


T.3N.

WHEATFIELD

R.1E.

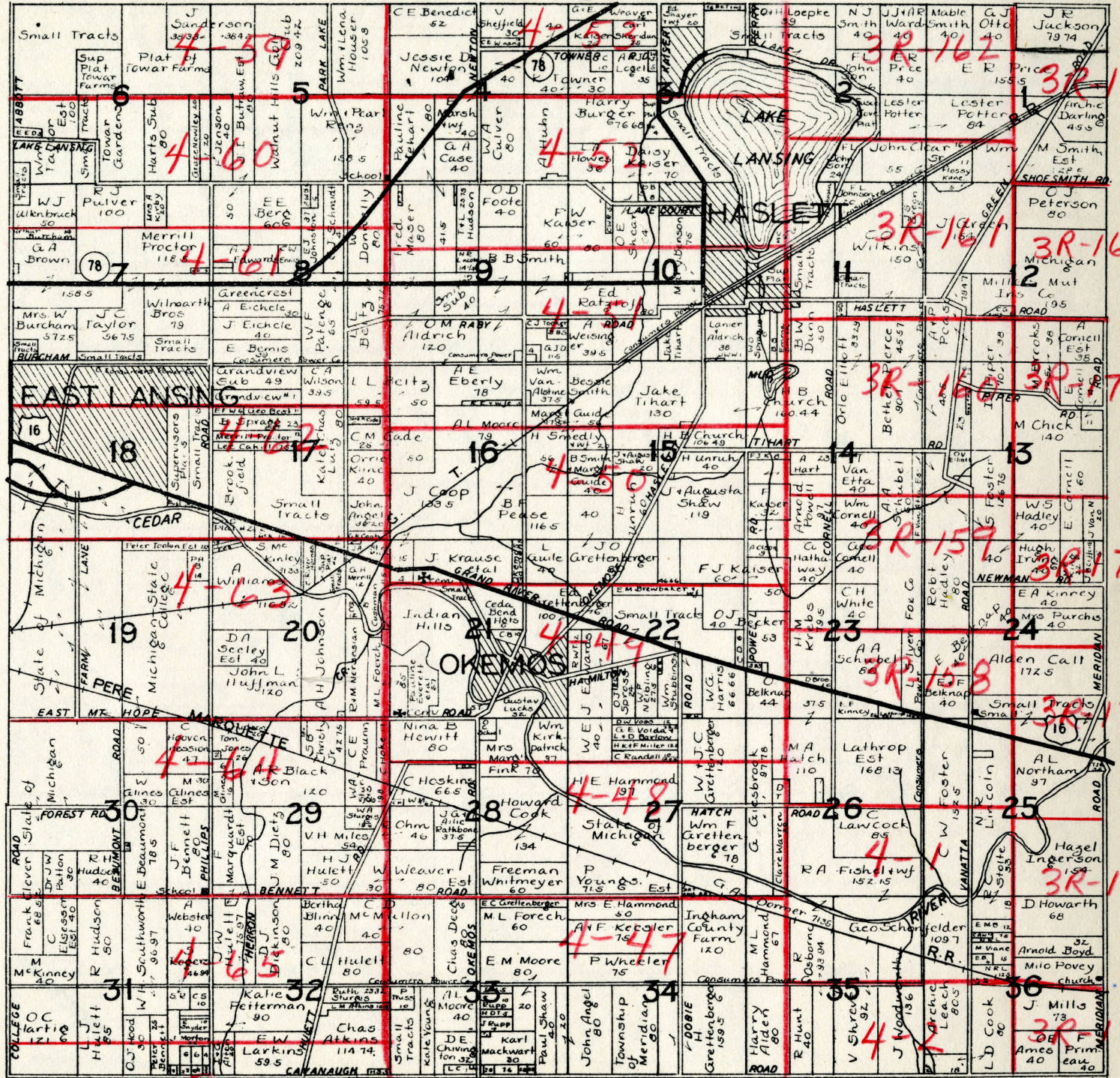




T. 4 N.

MERIDIAN

R. 1 W.



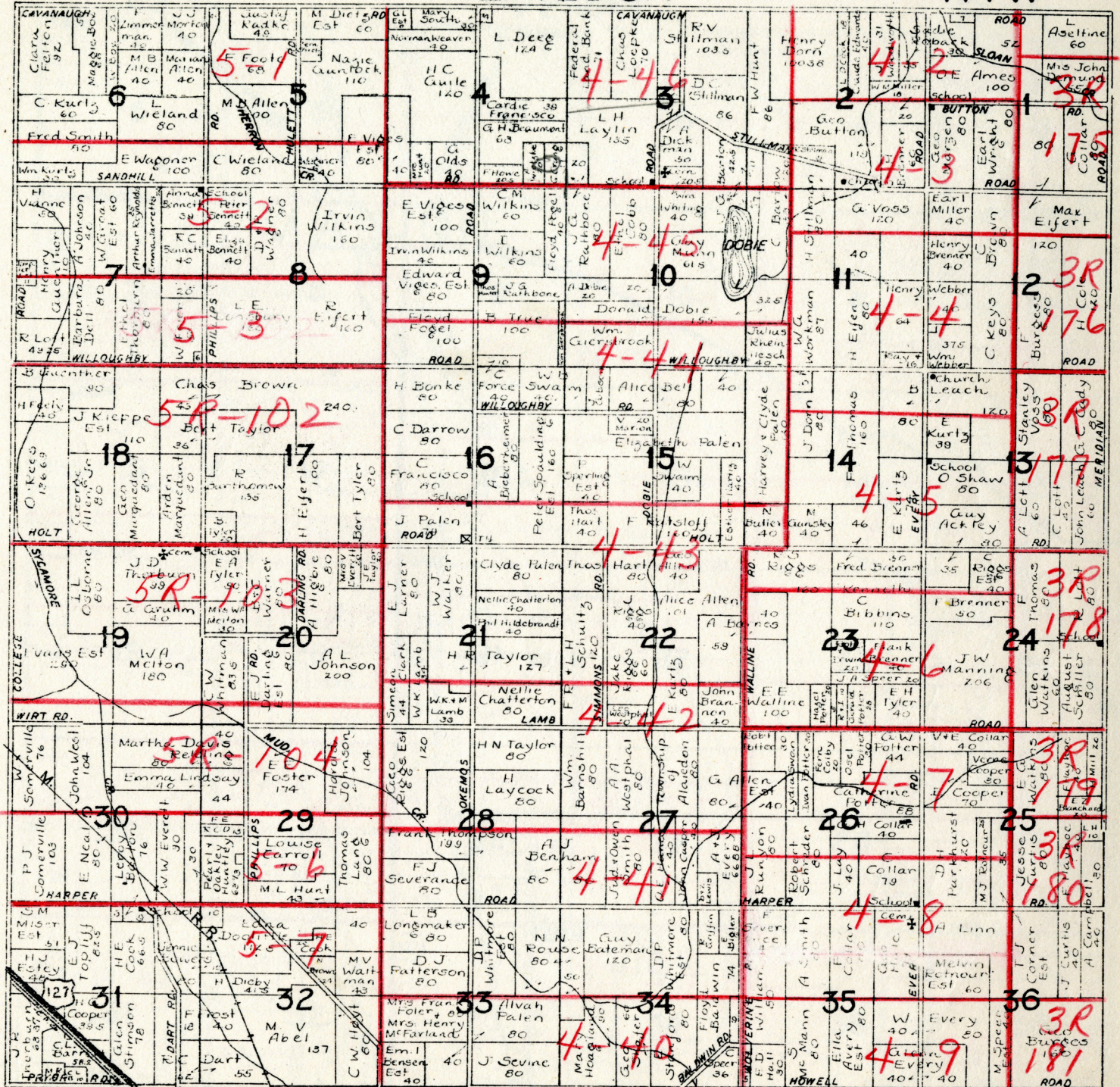
3-1

Ingham Co. Map

T.3 N.

ALAIEDON

R.1 W.





T.I.N.

LESLIE

R.I.W.

Map grid containing various plots with names, acreages, and road designations such as 'PLAINS', 'ANNIS', 'COVERT', 'KINNEVILLE', 'BELLEVUE', 'FITZBURG', and 'BLACKMORE'. Includes handwritten numbers and names like 'W. Huntton' and 'W. D. Barr'.

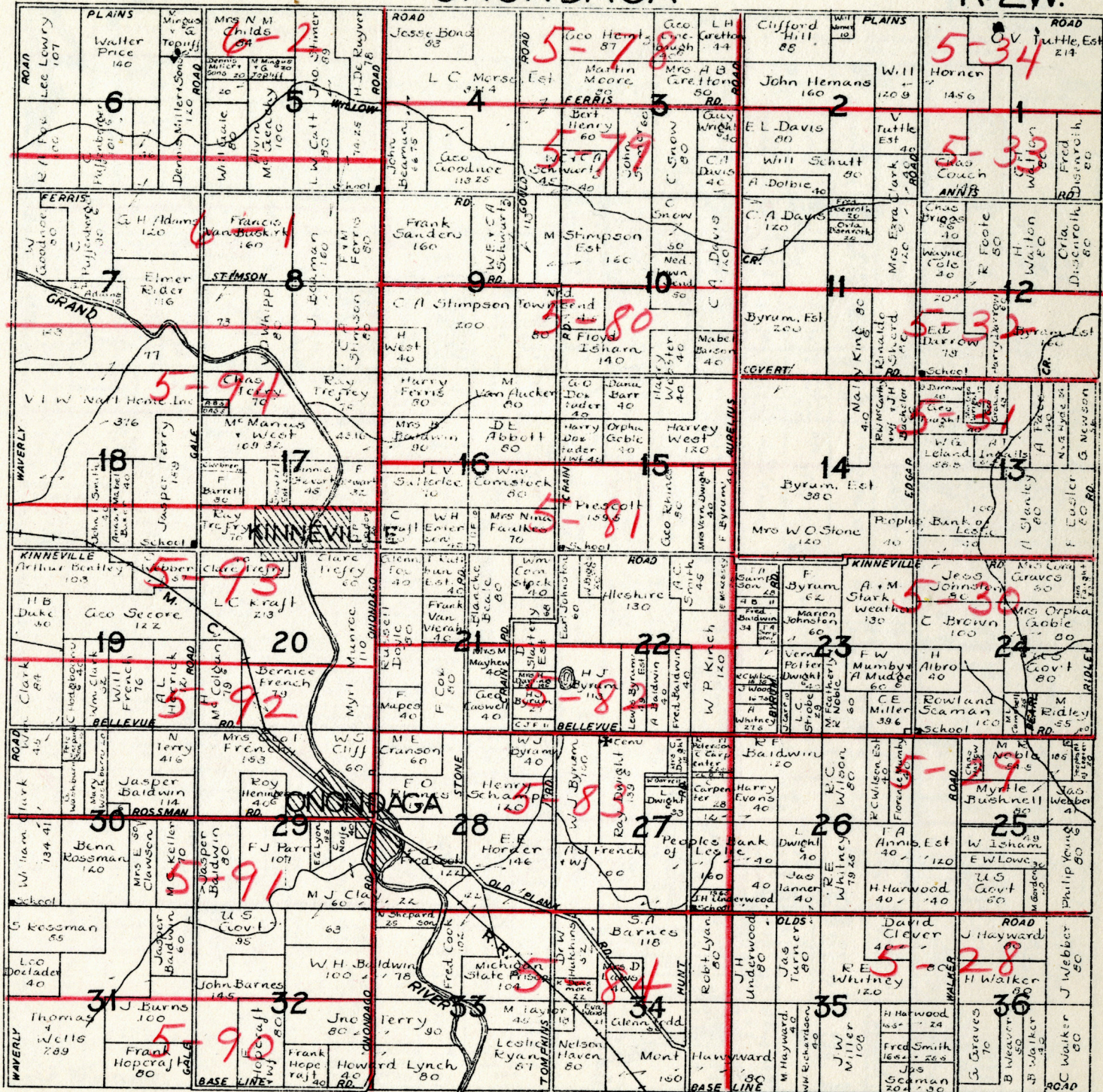
4-22

Ingham Co Mich

T. 1N.

ONONDAGA

R. 2W.

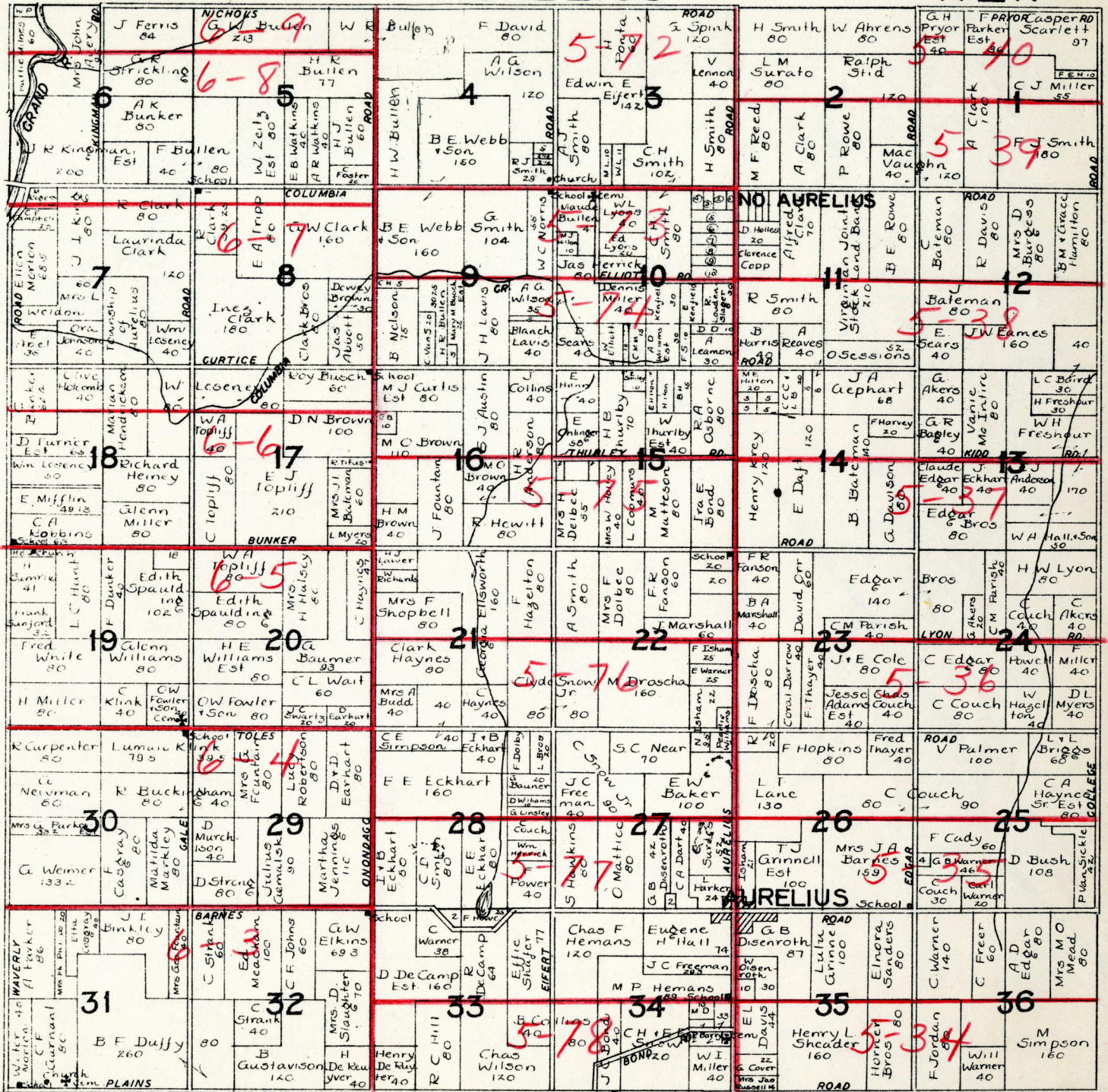




T.2N.

AURELIUS

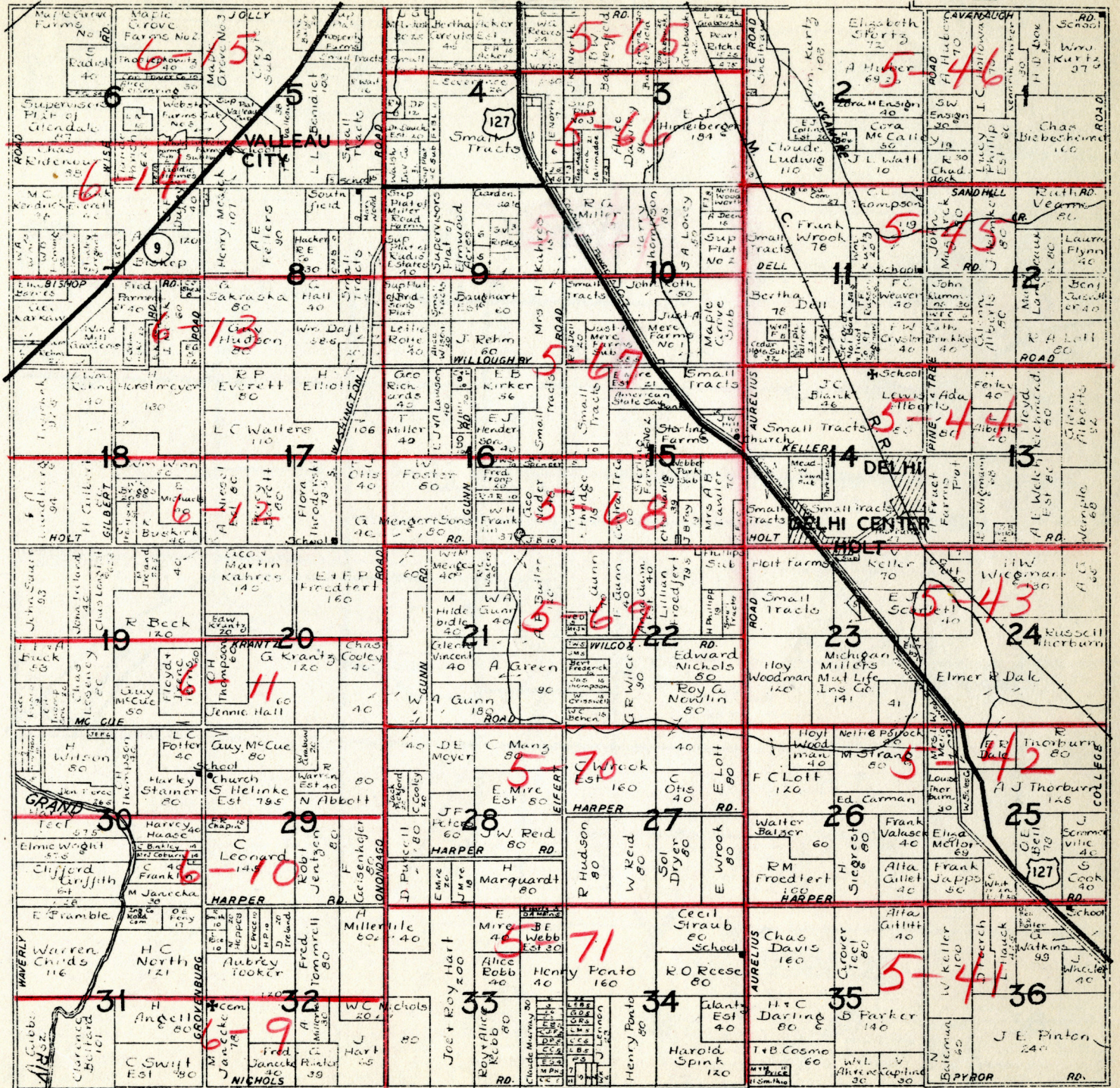
R.2W.



T.3N.

DELHI

R.2W.



T.4N.

LANSING

R.2W.

