

G  
1413  
.M25  
R6  
192-?

M  
P

PLAT BOOK

OF

*Waco Co., Michigan*

Published by W. W. HIXSON & COMPANY, Rockford, Illinois



DO NOT DETACH

MAPS

G

1413

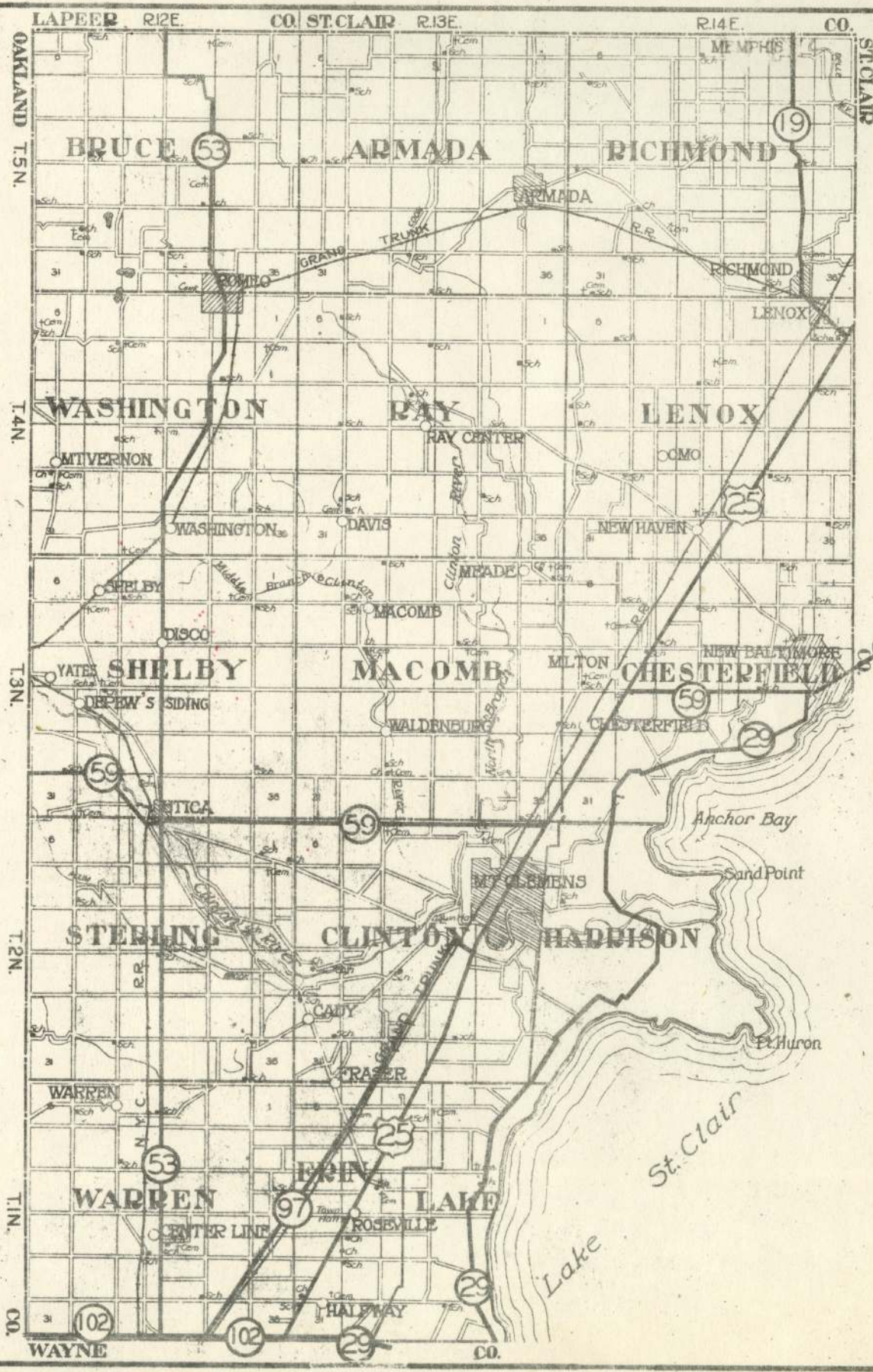
M25

R6

1931

MAP LIBRARY  
ROOM USE ONLY





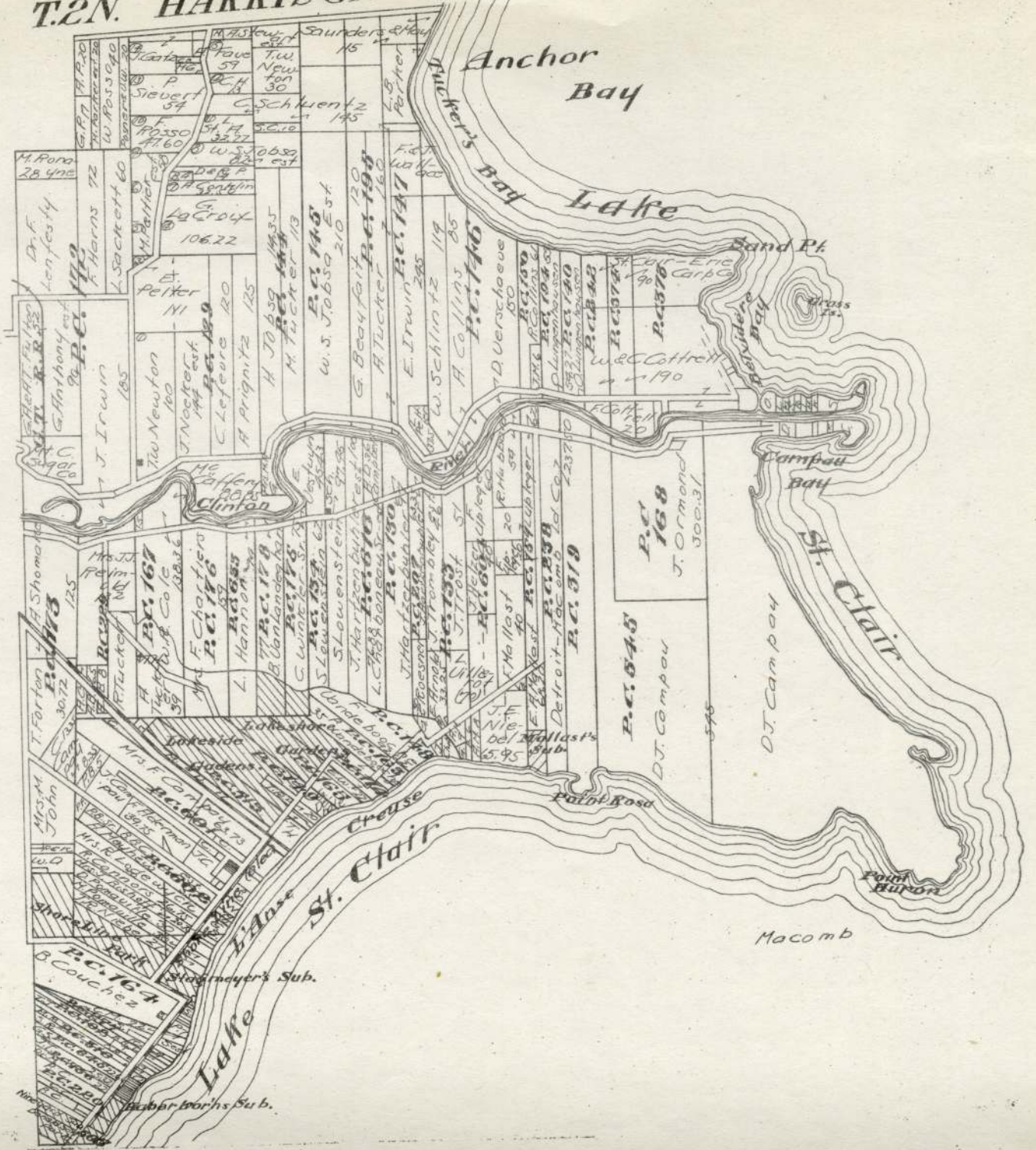
MACOMB COUNTY

MACOMB



365-7723

# T.2N. HARRISON R.10, E.1



Macomb

St. Clair  
Campau Bay  
Sand Pt.  
Anchor Bay

Lake St. Clair  
Lake St. Clair  
Lake St. Clair

Huber's Sub.  
Stagmayer's Sub.



















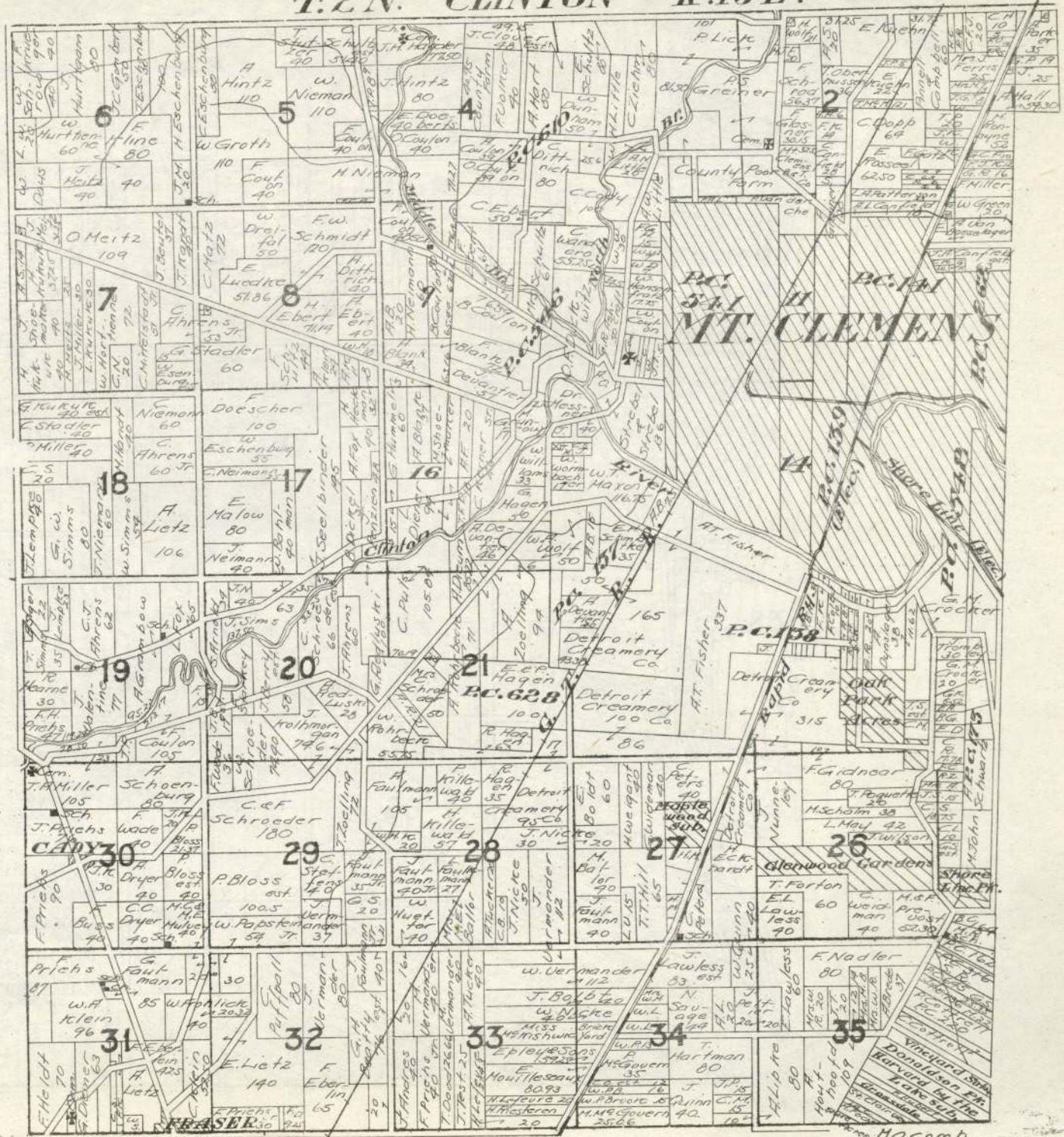






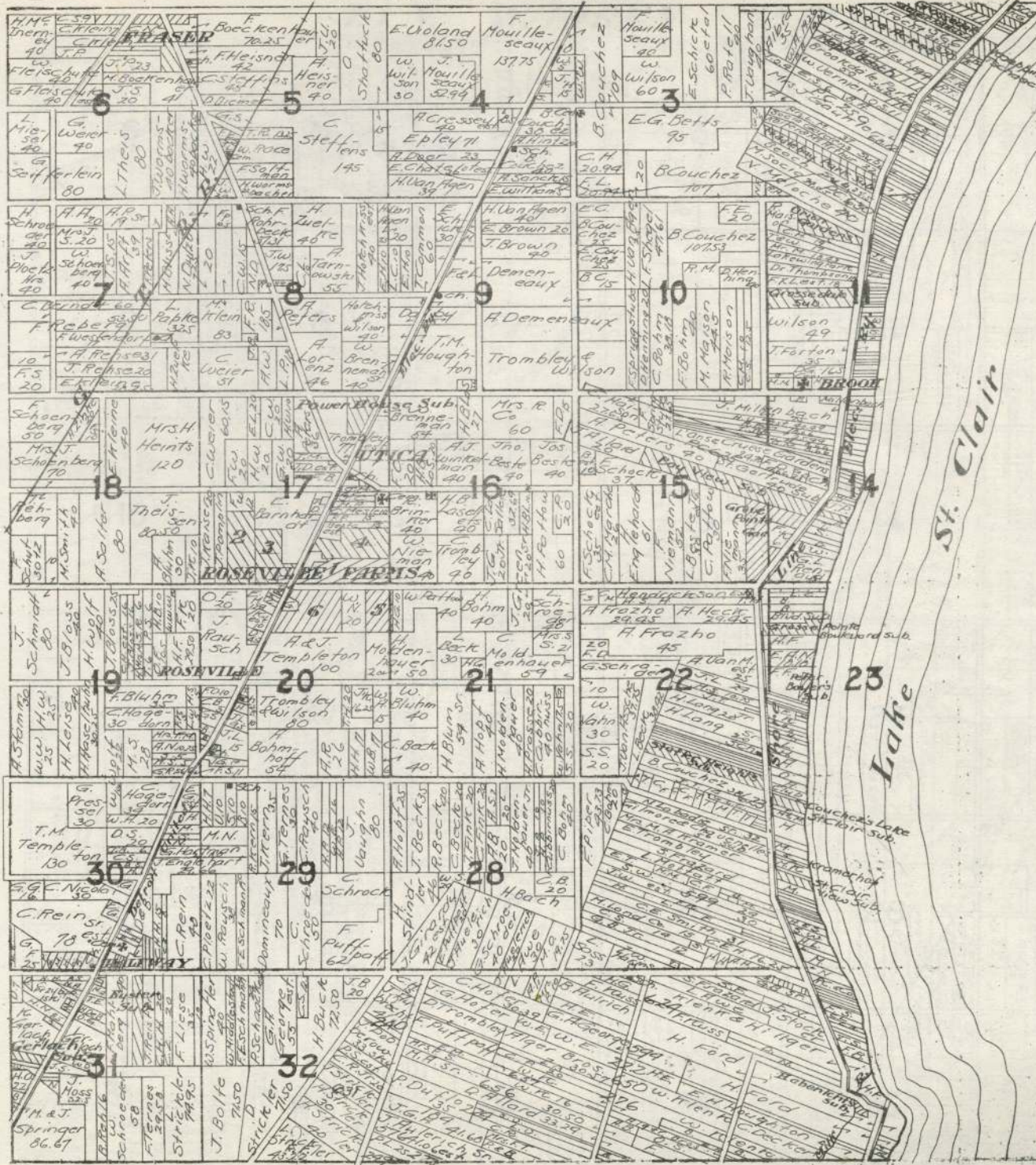


T.2N. CLINTON R.13E.





T.1N. R.13E.



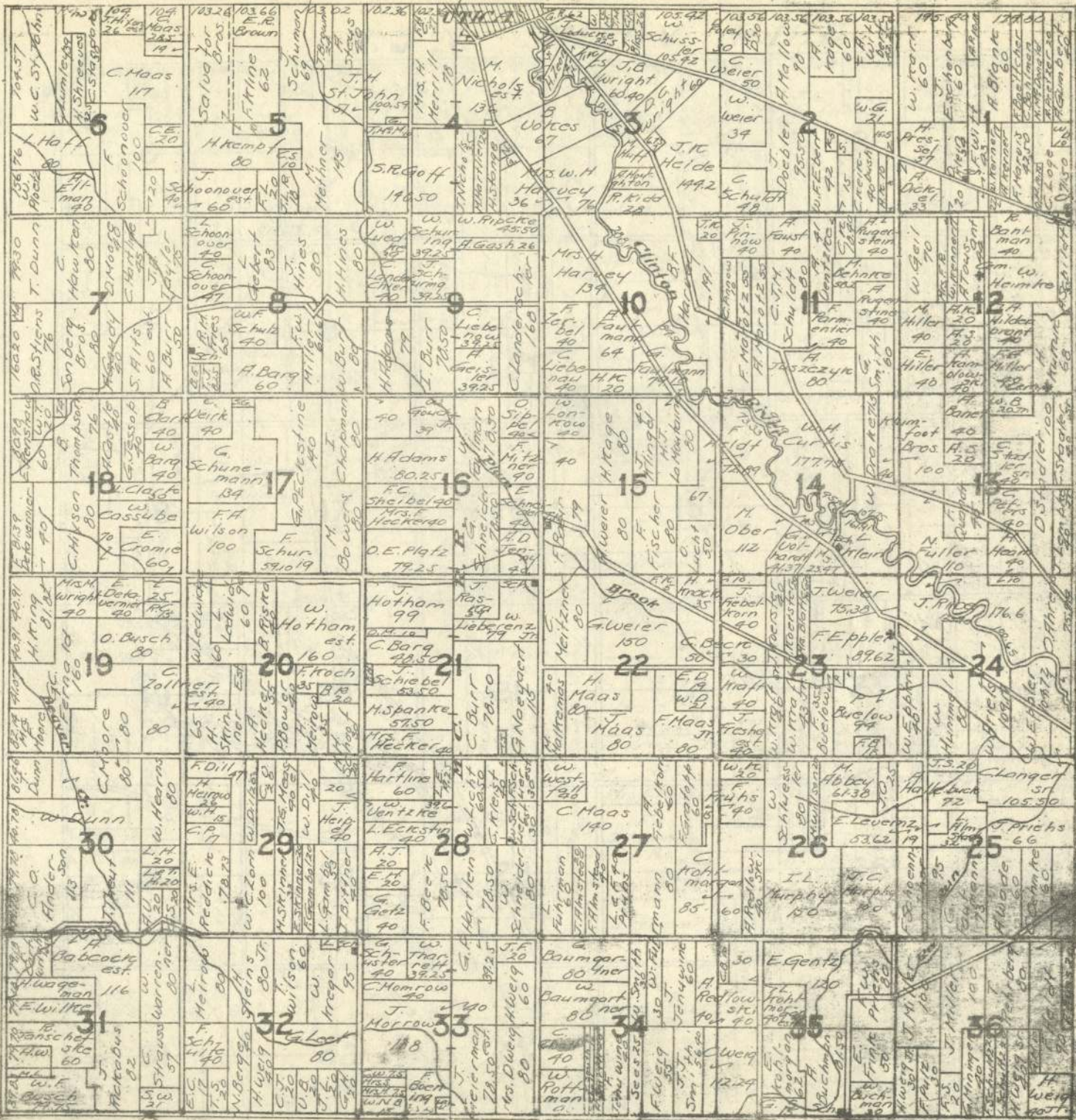


# T.1 N. WARREN R.12 E.

6	5	4	3	2	1
7	8	9	10	11	12
18	17	16	15	14	13
19	20	21	22	23	24
30	29	28	27	26	25
31	32	33	34	35	36



T. 2N. STERLING R. 12E.



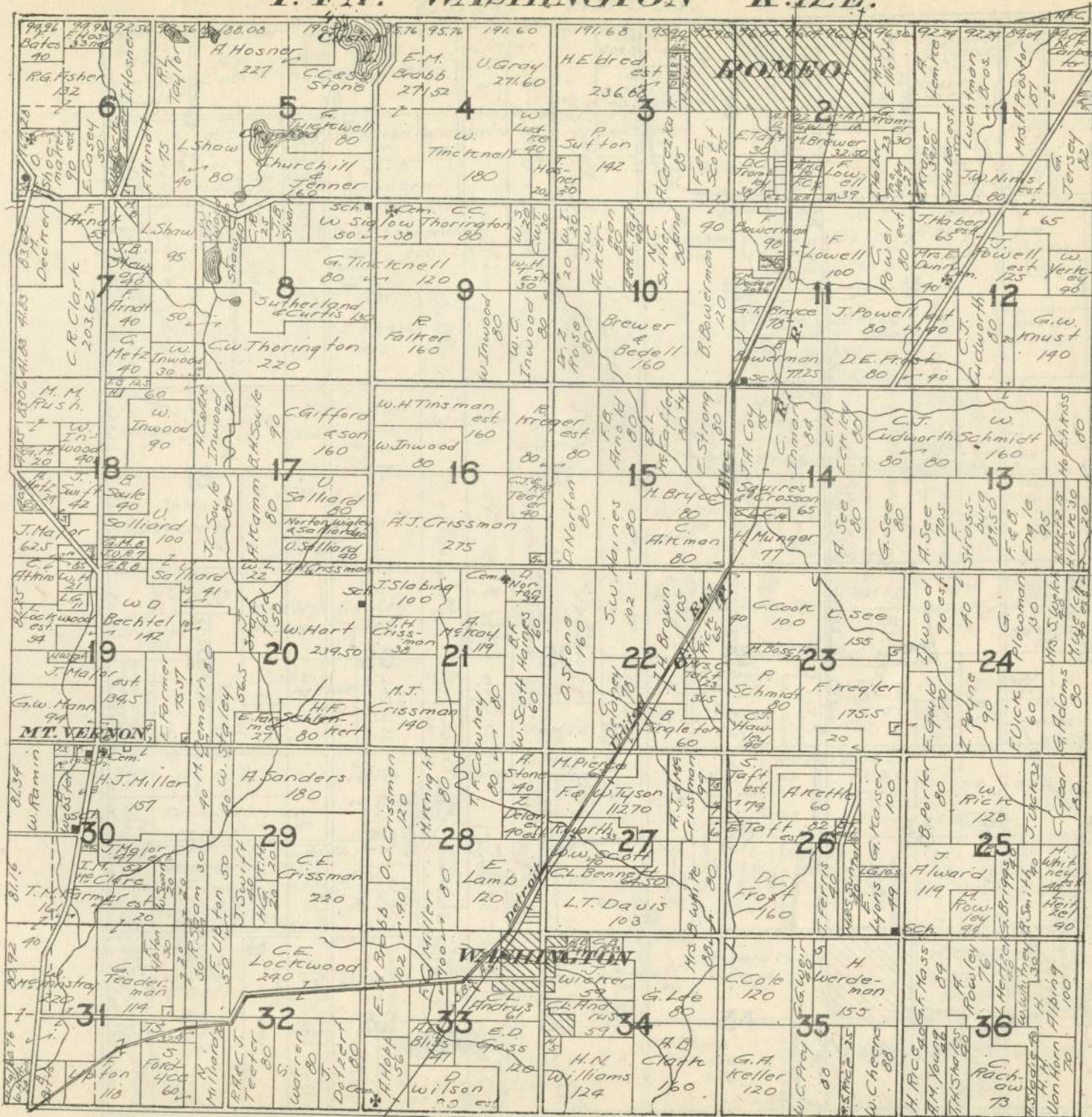


T.3 N. SHELBY R.12E.





T.4 N. WASHINGTON R.12 E.





# T.5N. BRUCE R.12E.

