

G  
1413  
.M55  
R6  
[1930]

326  
19

Plat Book  
OF  
MISSAUKEE CO.

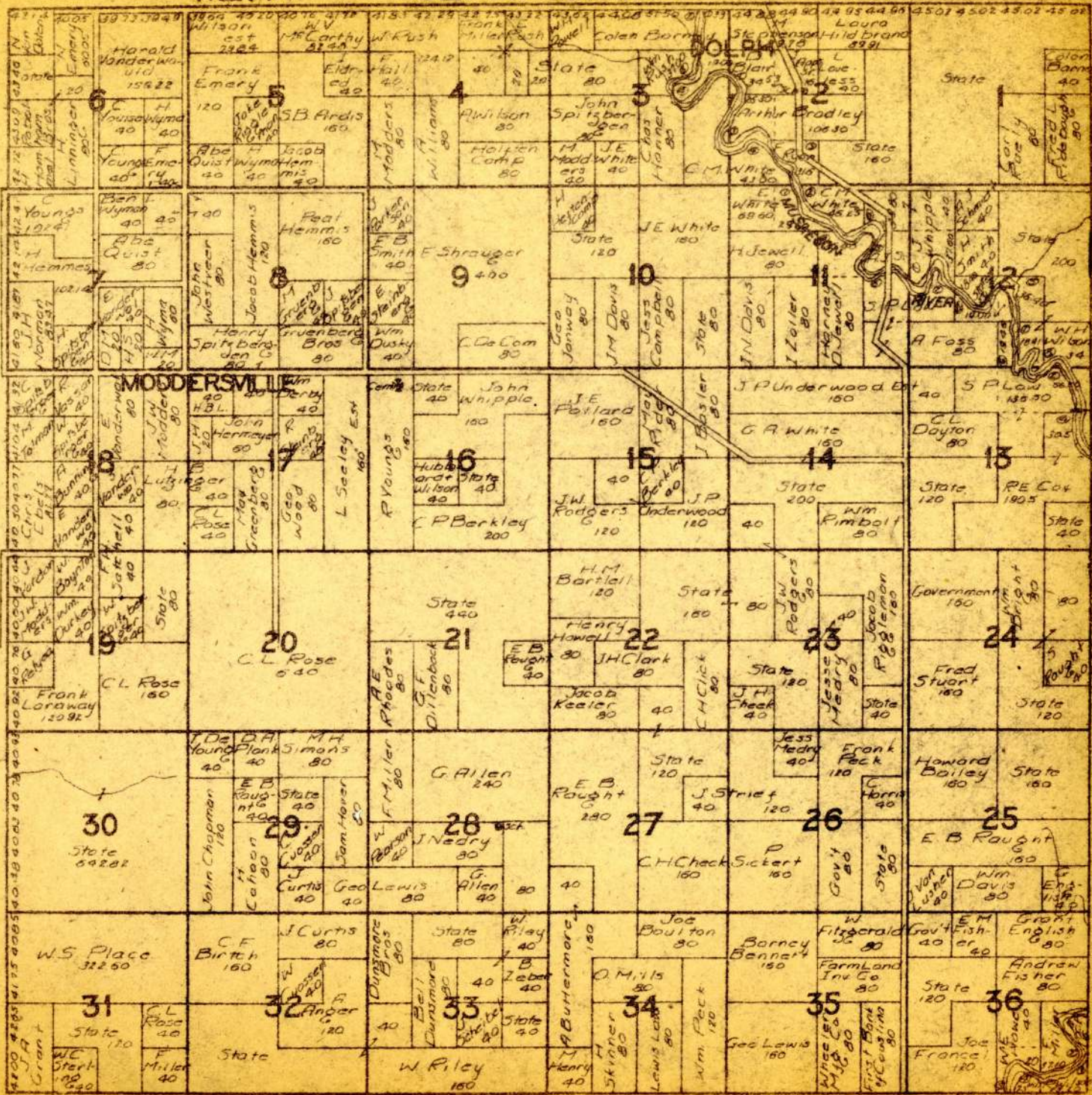
**LIBRARY**  
**Michigan State**  
**University**



PART OF  
T.21N. CLAM UNION R.5W.

MAPS  
G  
1413  
.M55.  
R6  
[1930]

20400251









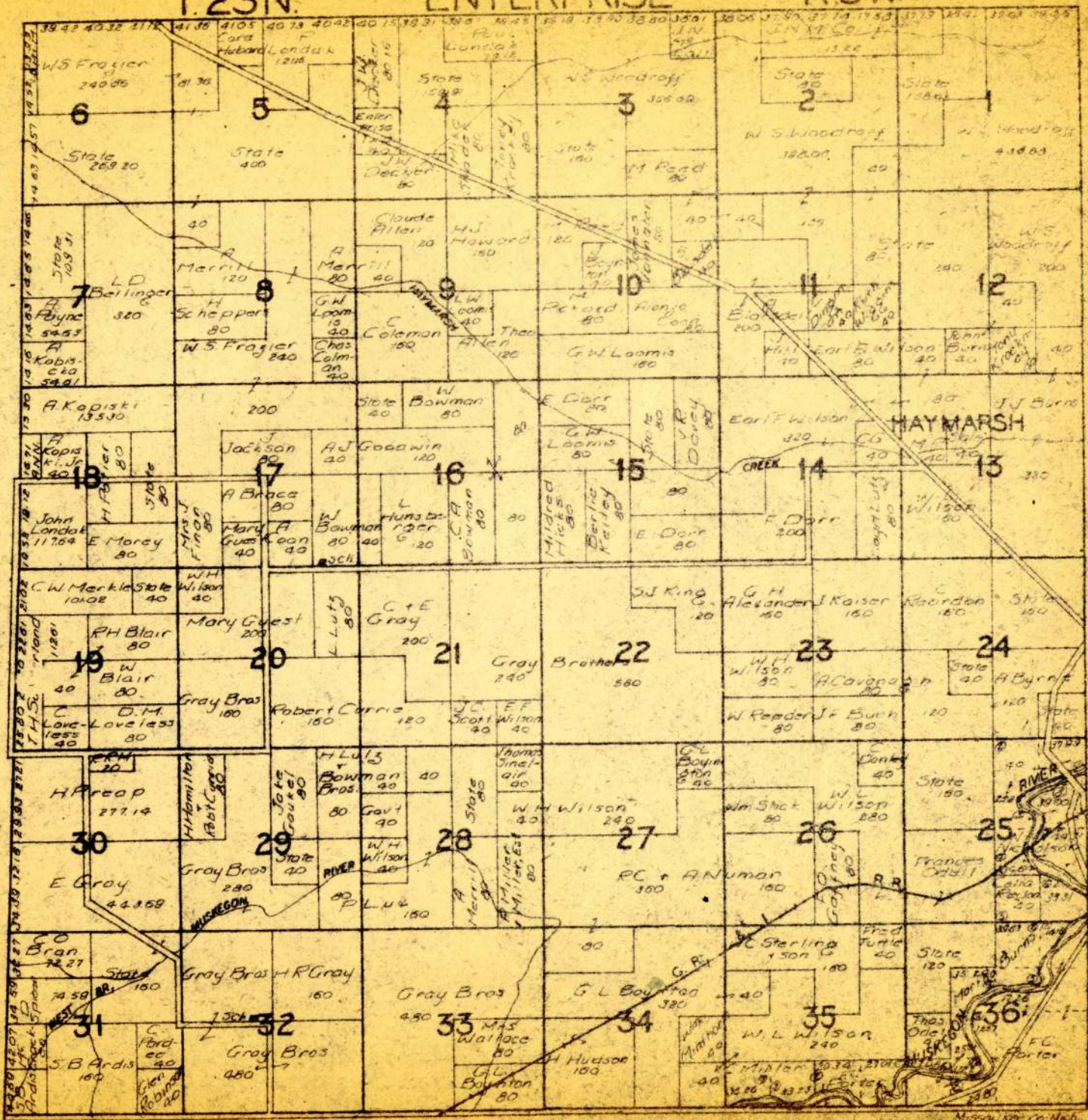




T.23N.

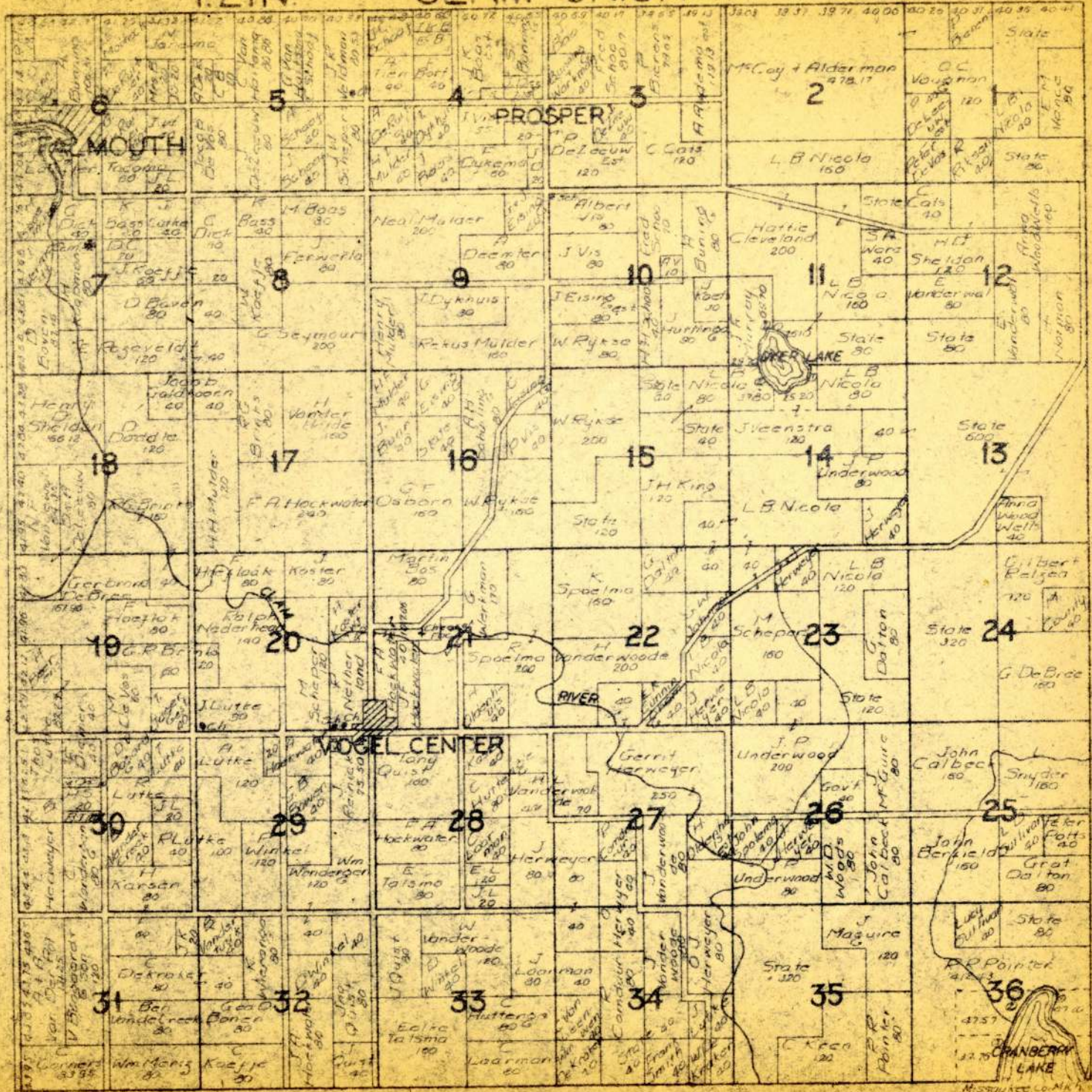
ENTERPRISE

R.5W.





T.21N. PART OF CLAM UNION R.6W.

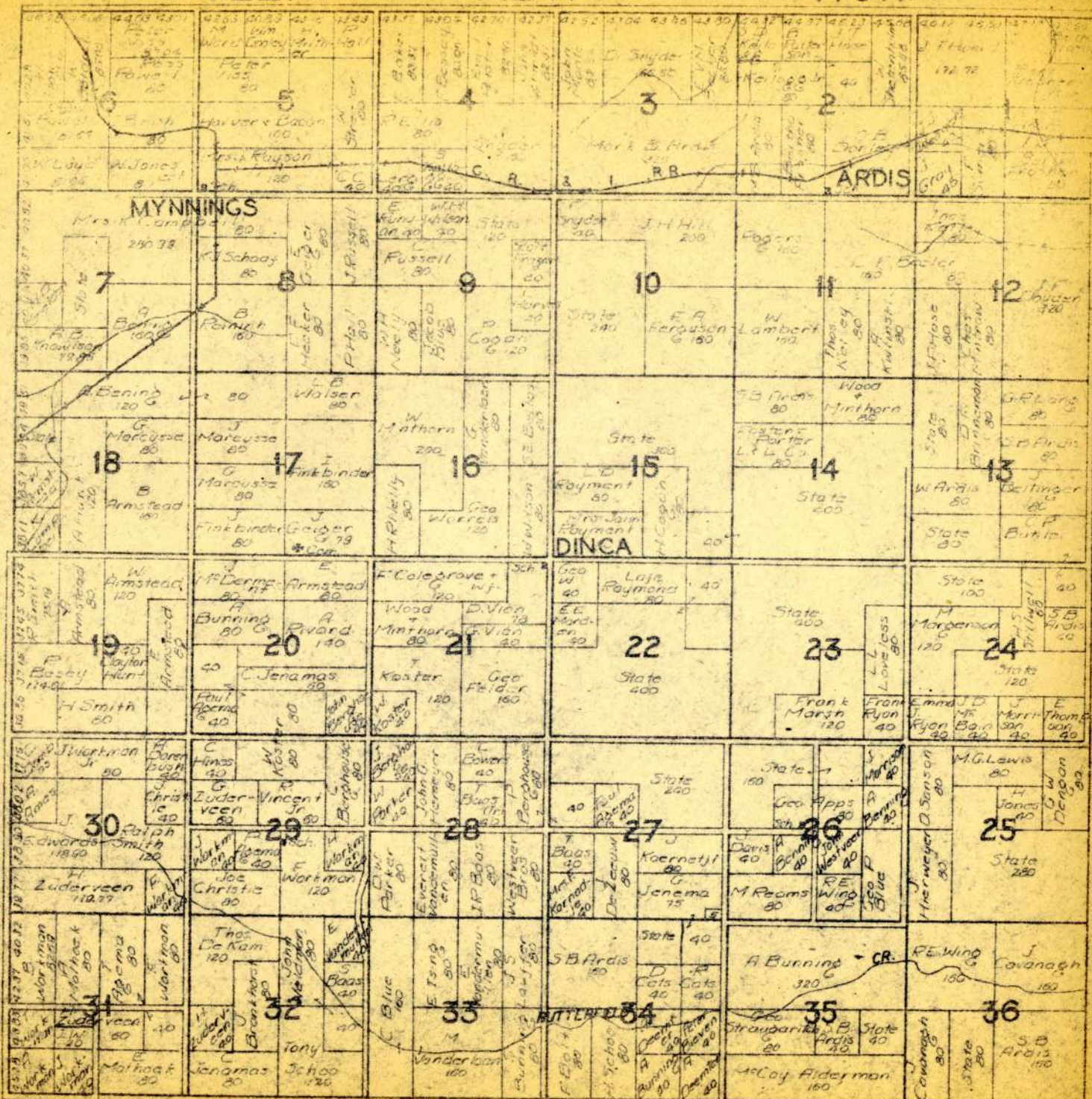




T.22N.

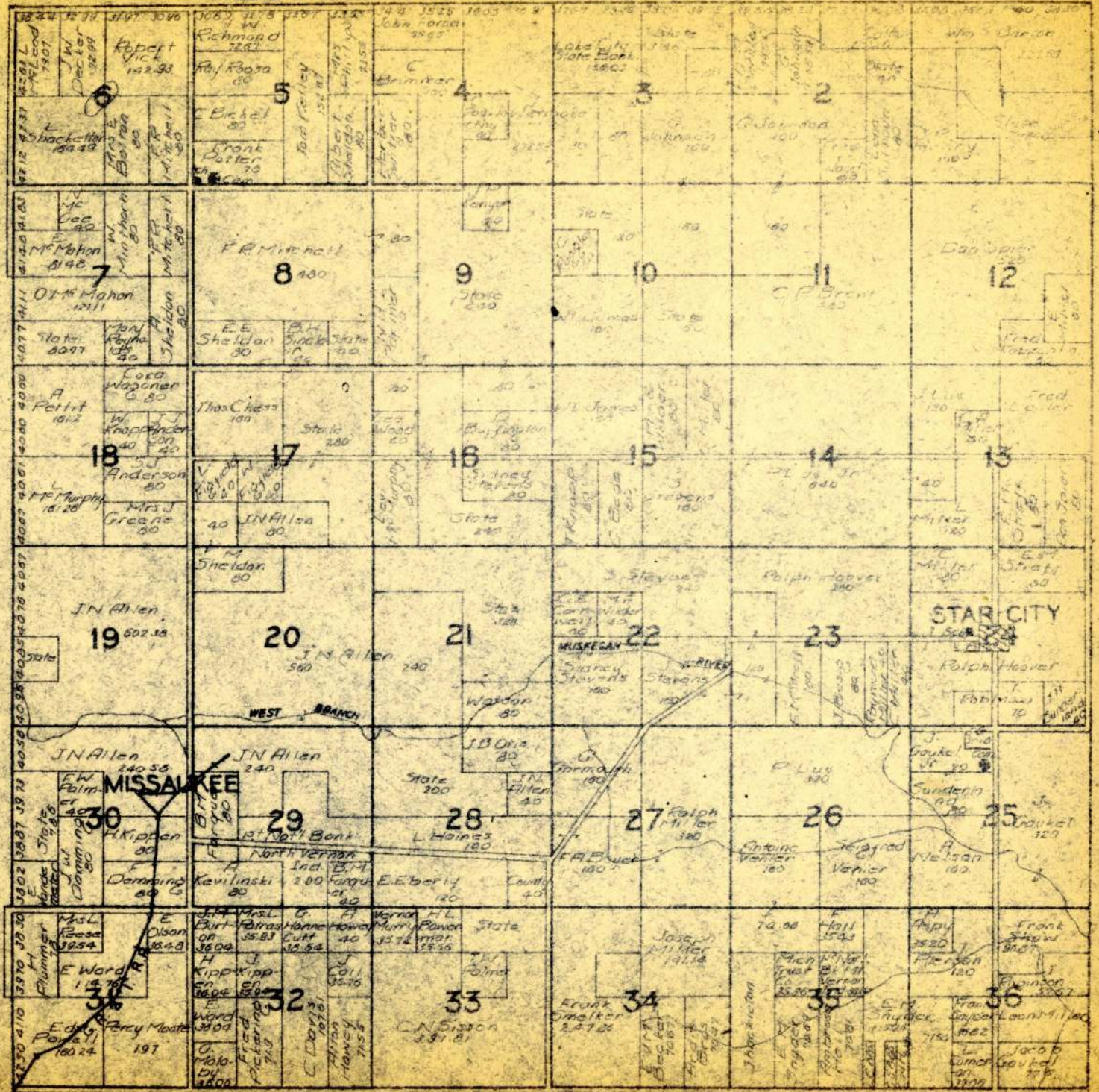
AETNA

R 6W.





T.23N. WEST BRANCH R.6W.









T.21N

RIVERSIDE

R.7W.

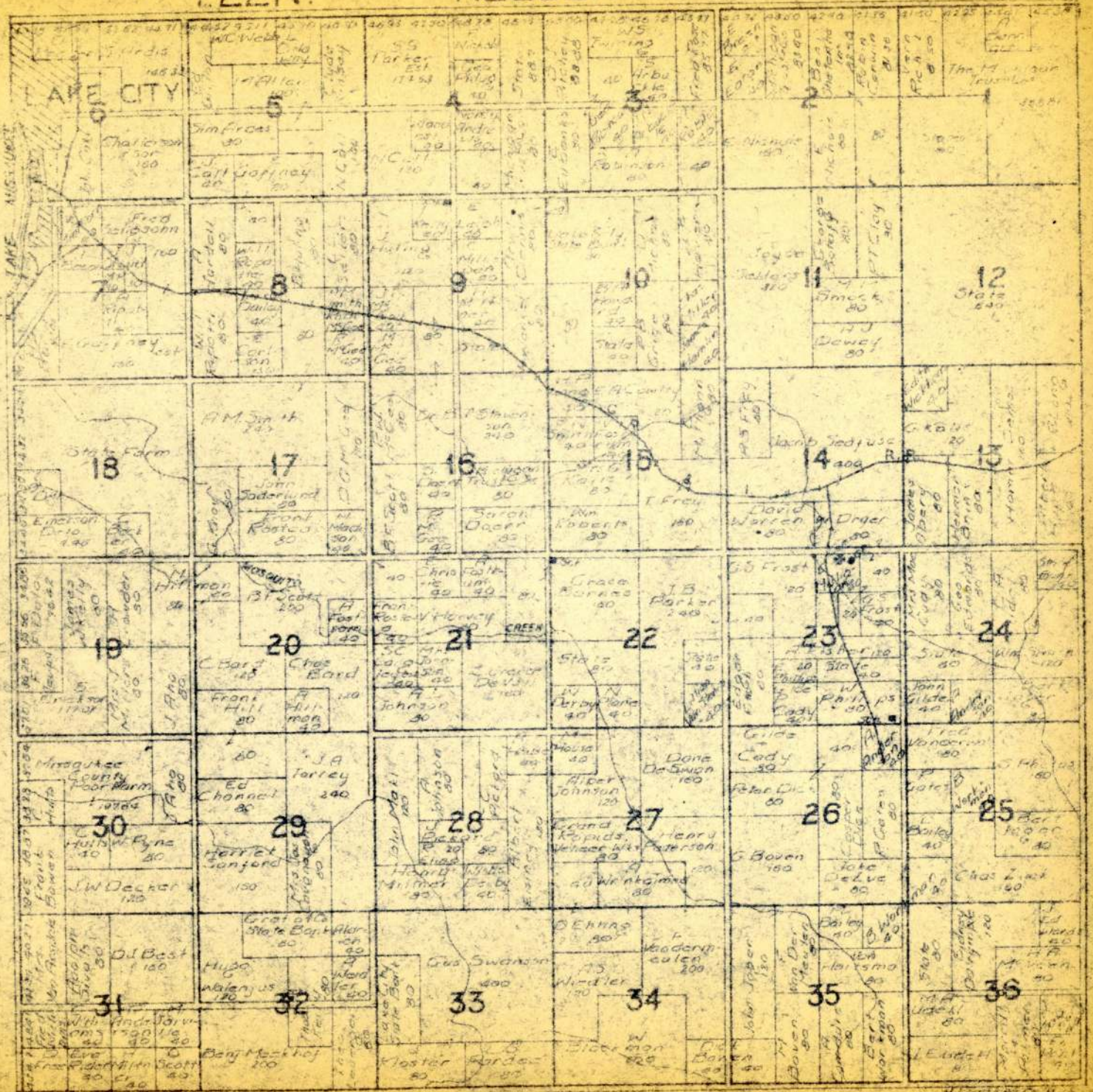
477 44 15 E & A Shahr	453 3 W Gardner	465 0 A Merz	470 2 A Smith	48 0 0 Gee Worren	49 0 0 John Swan	50 0 0 John Swan	51 0 0 John Swan	52 0 0 John Swan	53 0 0 John Swan	54 0 0 John Swan	55 0 0 John Swan	56 0 0 John Swan	57 0 0 John Swan	58 0 0 John Swan	59 0 0 John Swan	60 0 0 John Swan	61 0 0 John Swan	62 0 0 John Swan	63 0 0 John Swan	64 0 0 John Swan	65 0 0 John Swan	66 0 0 John Swan	67 0 0 John Swan	68 0 0 John Swan	69 0 0 John Swan	70 0 0 John Swan	71 0 0 John Swan	72 0 0 John Swan	73 0 0 John Swan	74 0 0 John Swan	75 0 0 John Swan	76 0 0 John Swan	77 0 0 John Swan	78 0 0 John Swan	79 0 0 John Swan	80 0 0 John Swan	81 0 0 John Swan	82 0 0 John Swan	83 0 0 John Swan	84 0 0 John Swan	85 0 0 John Swan	86 0 0 John Swan	87 0 0 John Swan	88 0 0 John Swan	89 0 0 John Swan	90 0 0 John Swan	91 0 0 John Swan	92 0 0 John Swan	93 0 0 John Swan	94 0 0 John Swan	95 0 0 John Swan	96 0 0 John Swan	97 0 0 John Swan	98 0 0 John Swan	99 0 0 John Swan	100 0 0 John Swan																																						
6	7	8	9	10	11	12	13	14	15	16	17	18	19	20	21	22	23	24	25	26	27	28	29	30	31	32	33	34	35	36	37	38	39	40	41	42	43	44	45	46	47	48	49	50	51	52	53	54	55	56	57	58	59	60	61	62	63	64	65	66	67	68	69	70	71	72	73	74	75	76	77	78	79	80	81	82	83	84	85	86	87	88	89	90	91	92	93	94	95	96	97	98	99	100



T.22N.

REEDER

R.7W.

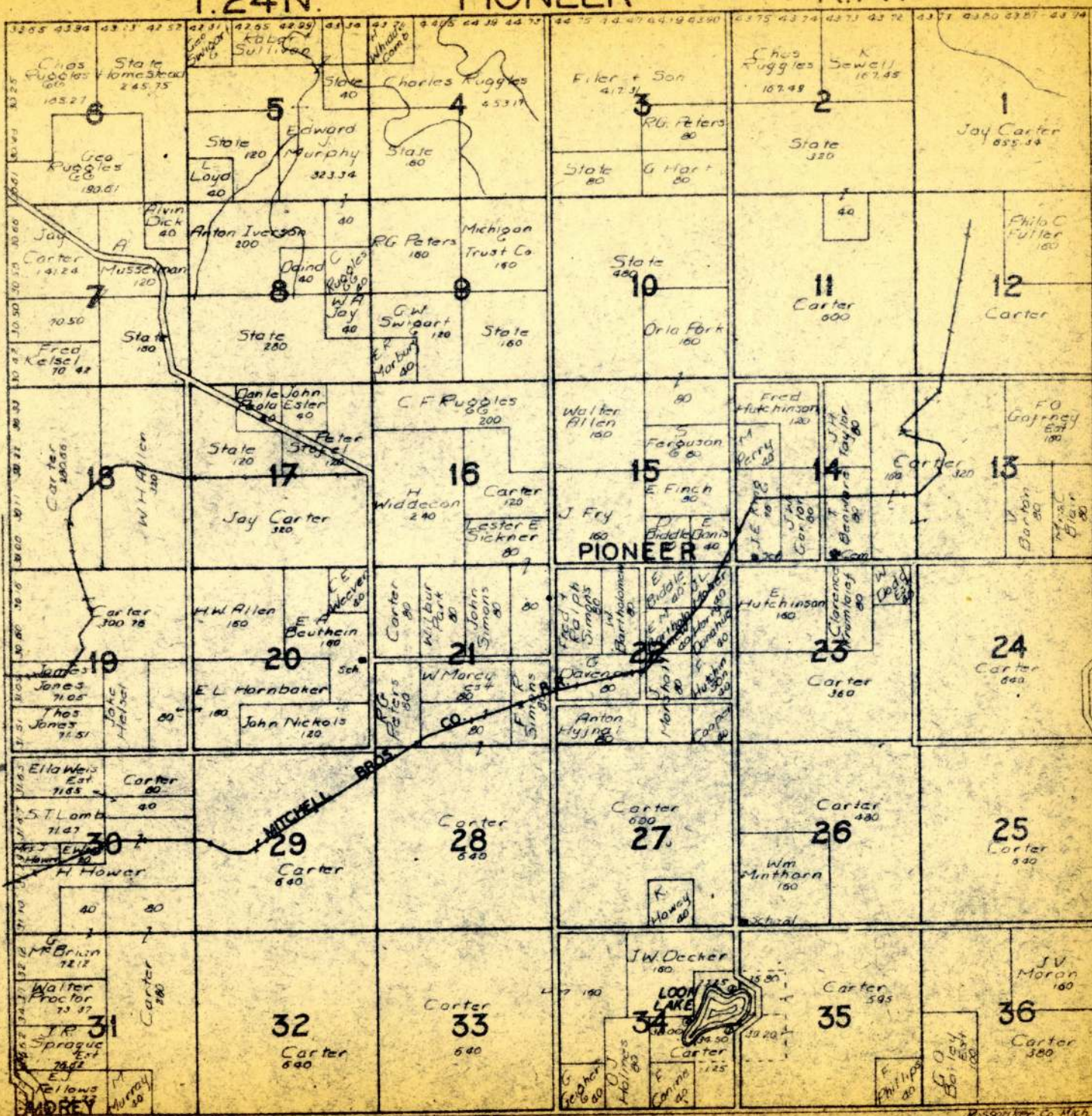




T.24N.

PIONEER

R.7W.

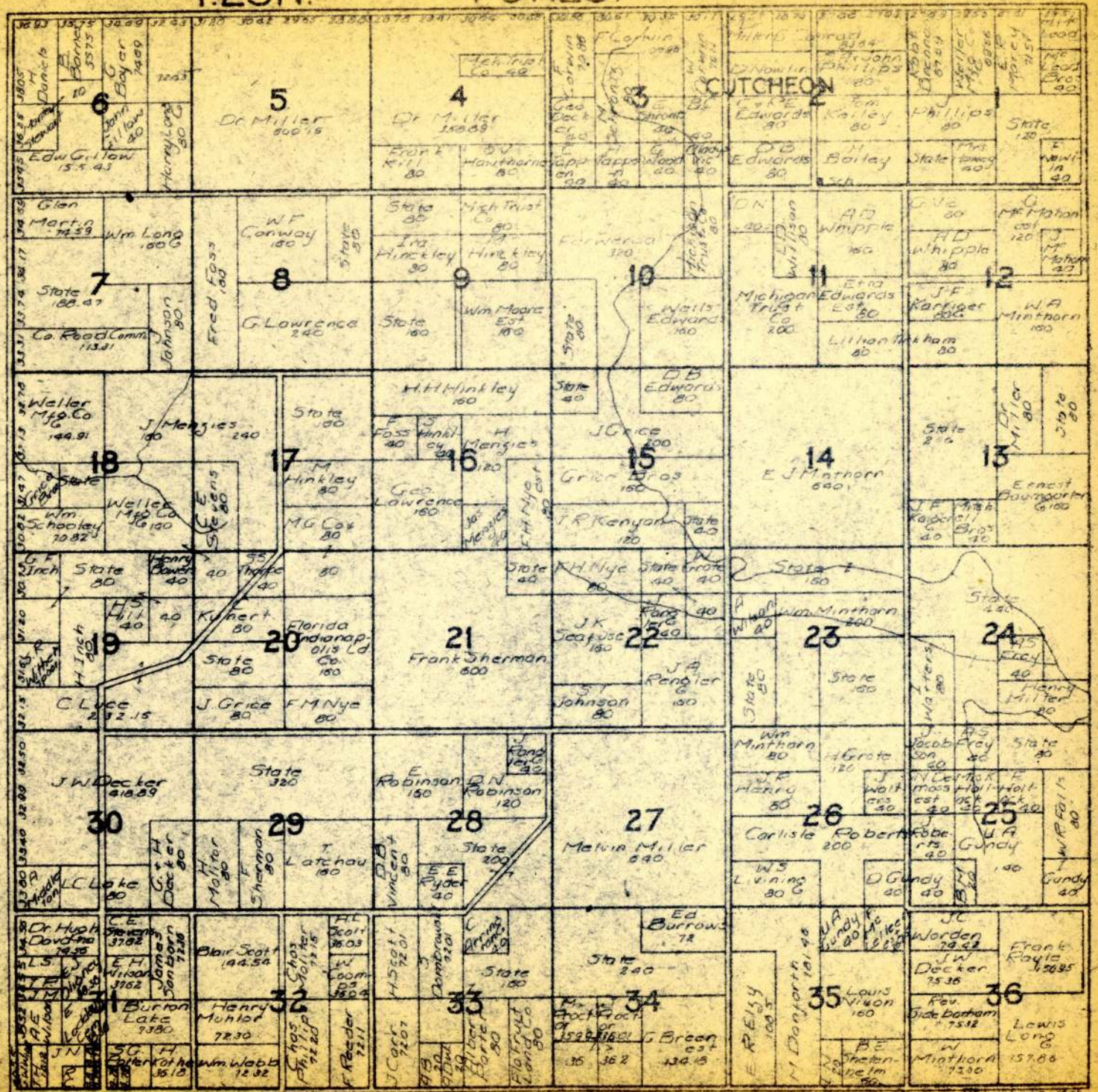




T.23N.

FOREST

R.7W.





T.21N.

RICHLAND

R.8W.

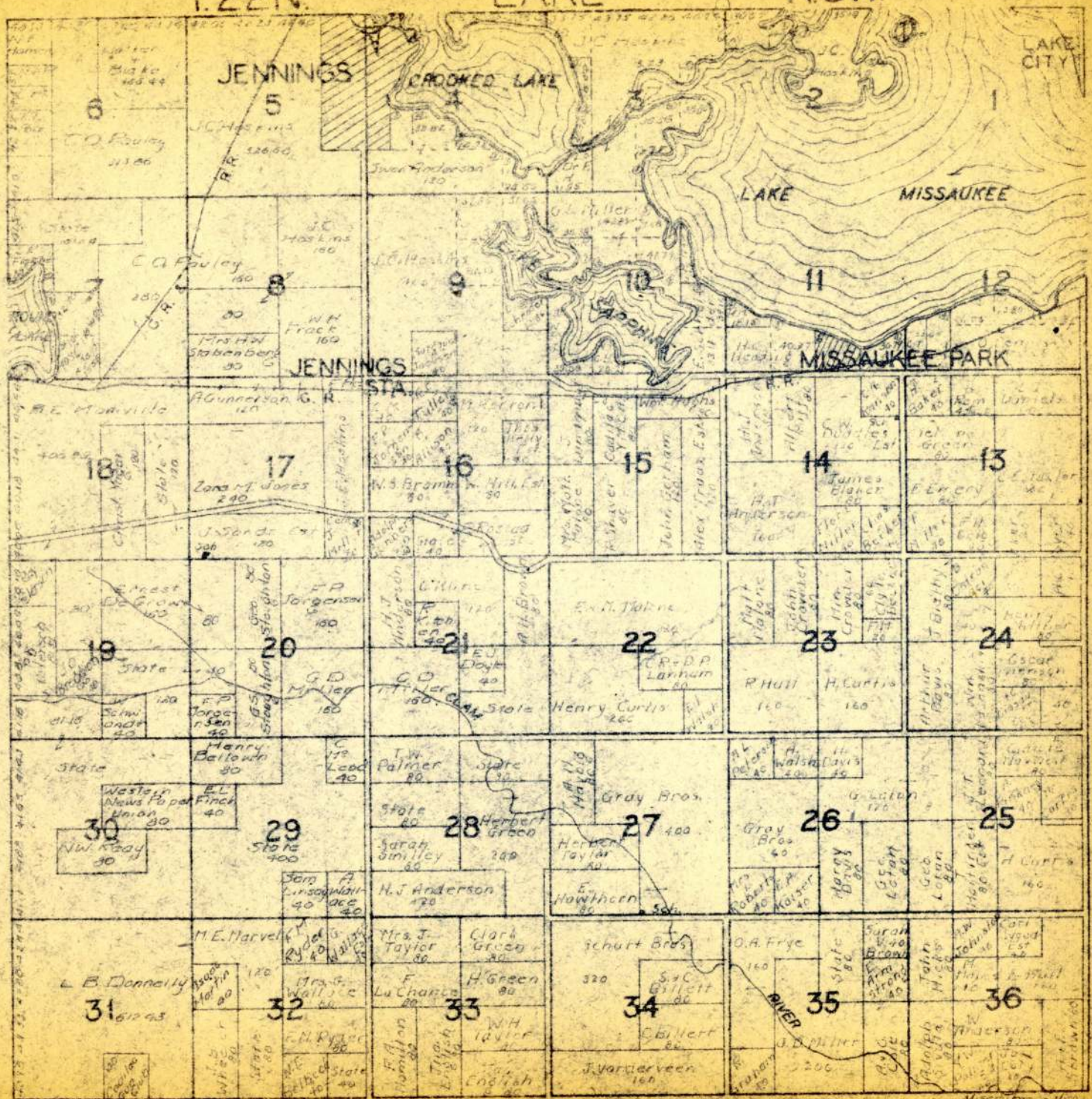
<p>6 James Bogosta 68103</p>	<p>5 Whitman College 600 25</p>	<p>4 Hickey 100 25</p>	<p>3 E. S. Hall 100 25</p>	<p>2 John 100 25</p>	<p>1 Clements 100 25</p>	<p>1 B. Carry 100 25</p>
<p>7 W.H. Taylor 100</p>	<p>8 G.W. Elliott 100</p>	<p>9 J. English 100</p>	<p>10 D. Lucas 100</p>	<p>11 R. Prince 100</p>	<p>12 Mrs. F. Syme 100</p>	
<p>18 K. Nielson 100</p>	<p>17 W.H. Taylor 100</p>	<p>16 M. Lucas 100</p>	<p>15 A. Arbor 100</p>	<p>14 D. Schurte 100</p>	<p>13 Hughes 100</p>	
<p>19 Robt Wymor 100</p>	<p>20 W.H. Taylor 100</p>	<p>21 J.H. Klinge 100</p>	<p>22 H. Schurte 100</p>	<p>23 Lindsay 100</p>	<p>24 Bogard 100</p>	
<p>30 M. Mac hoff 100</p>	<p>29 M. Meckhoff 100</p>	<p>28 W. Herrema 100</p>	<p>27 Brimink 100</p>	<p>26 O. Boer 100</p>	<p>25 A. Kuiper 100</p>	<p>MC BAIN</p>
<p>31 S. Shine 100</p>	<p>32 D. B. Kelly 100</p>	<p>33 G. Newen 100</p>	<p>34 W. J. Meckhoff 100</p>	<p>35 C. Van Houten 100</p>	<p>36 A. B. Van der 100</p>	



T.22N.

LAKE

R.8W









T.24N.

BLOOMFIELD

R.8W.

