

G  
1413  
.N4  
W2  
1900  
193?

**M**

502 93

# PLAT BOOK

OF

NEWAYGO COUNTY,  
MICHIGAN

Published by

W.W.HIXSON & CO.

Rockford, Illinois

**LIBRARY**  
**Michigan State**  
**University**

DO NOT DETACH

**MSU**  
LIBRARIES

RETURNING MATERIALS:  
Place in book drop to  
remove this checkout from  
your record. FINES will  
be charged if book is  
returned after the date  
stamped below.

**MAP LIBRARY**  
**DO NOT CIRCULATE**

MAPS

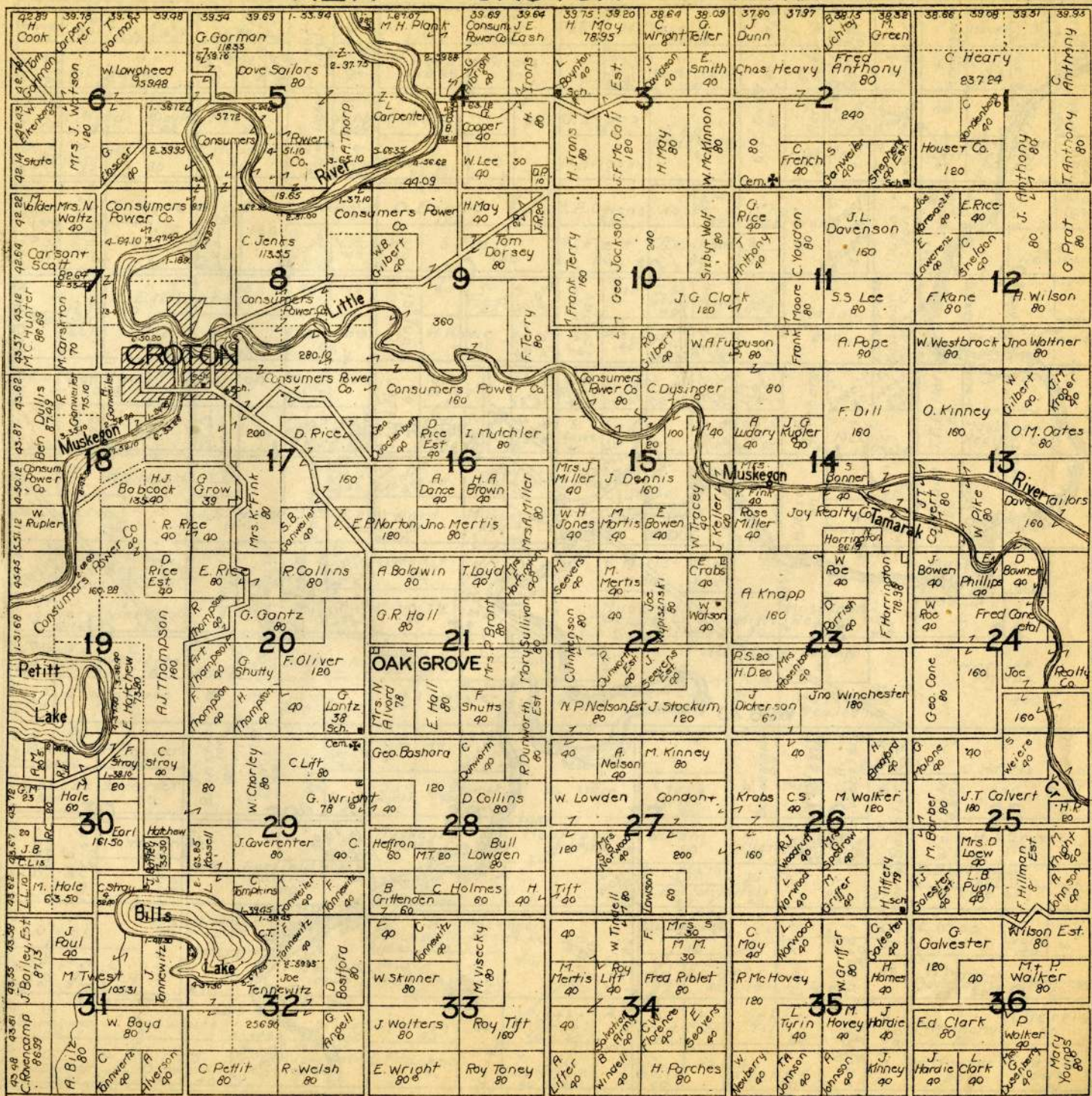
G  
1413  
N4  
R65  
1930  
c.2



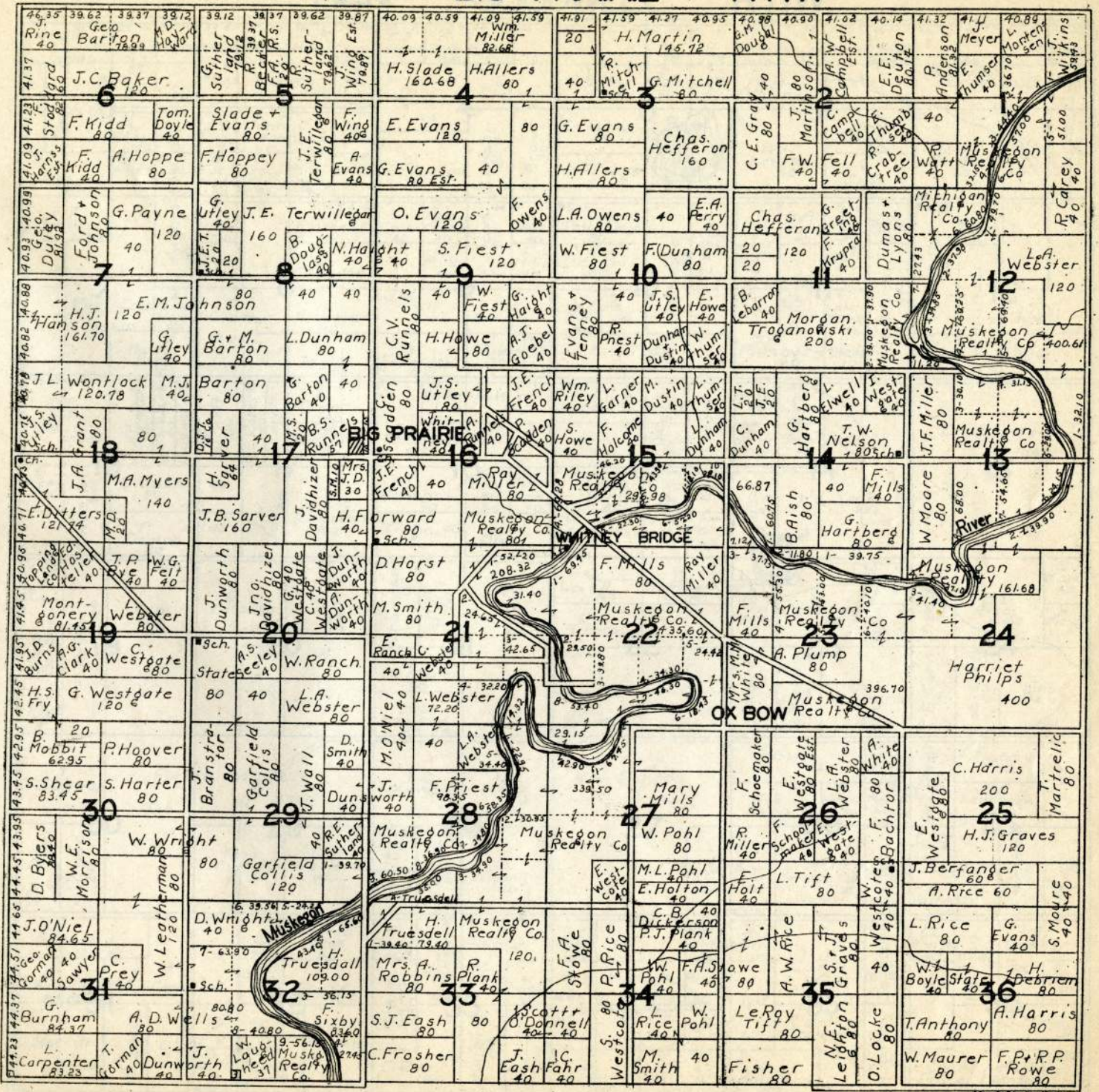
T.12N.

CROTON

R.11W.



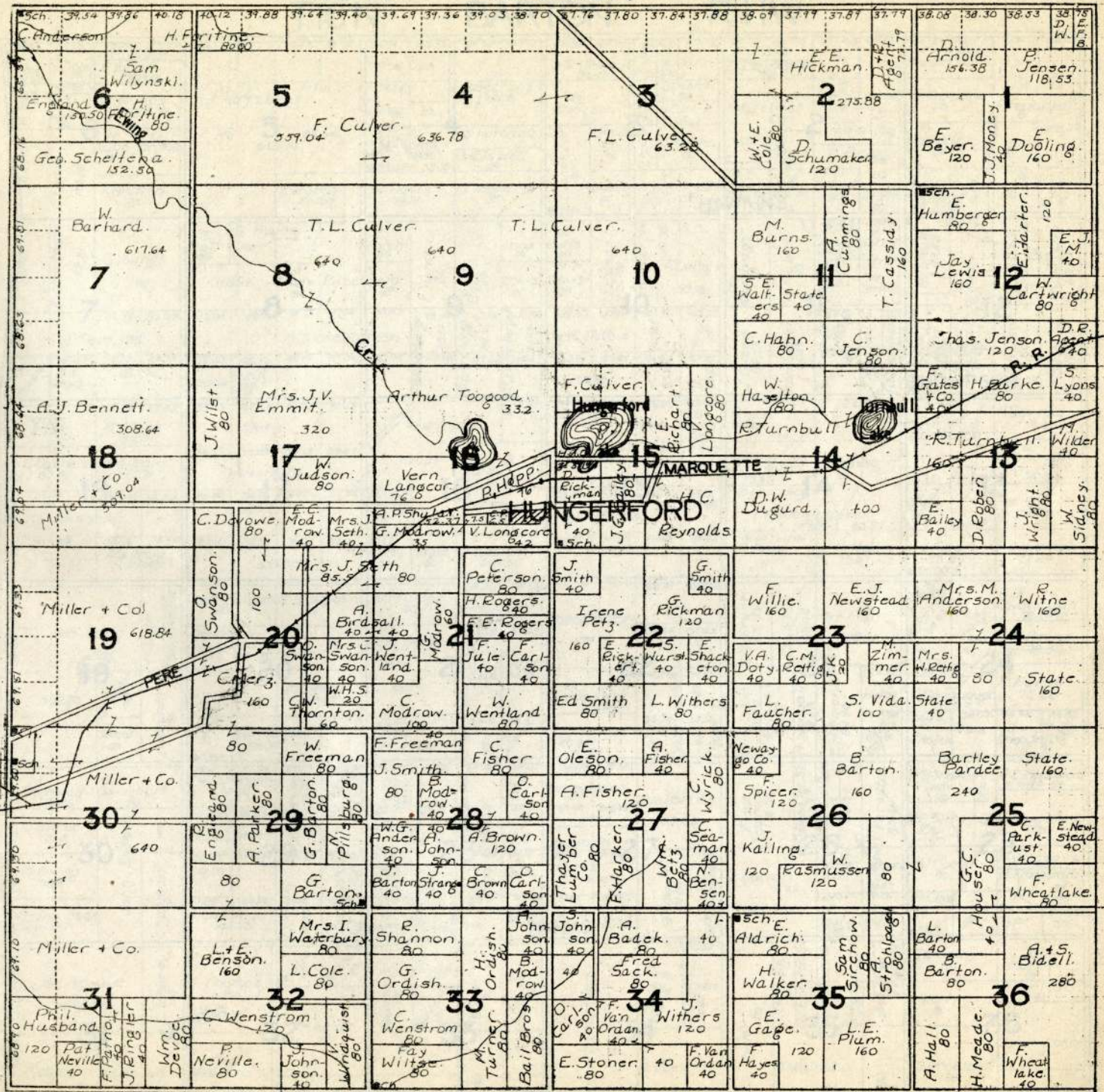
# T.13N. BIG PRAIRIE R.1W.



T.14N. GOODWELL R.11W.

38.40 37.90 Chas Lucas 77.90	34.10 34.10 H Toirn 77.10	34.30 34.30 M.J. Neville 79.35	34.35 34.35 Deval Anderson 77.20	34.75 34.75 E. Atkinson 77.20	34.80 34.80 C. Bullman 77.20	40.00 40.00 C. Bullman 77.20	40.10 40.10 C. Bullman 77.20	40.45 40.45 F. Sack 161.95	41.01 41.01 I. I.	41.09 41.09 C. Bullman 77.20	41.16 41.16 C. Bullman 77.20	41.32 41.32 Thom Hayes 77.20	41.78 41.78 Mrs. O. Fowler 83.46	41.85 41.85 Rosa McPherson 63.68	41.89 41.89 W. Lands	41.99 41.99 L. Green 80	41.27 41.27 W. Lands	41.37 41.37 W. Lands		
J.D. Burns 120	A. Reynolds 40	G. Wilson 40	J.B. Johnson 40	C.J. Cole 40	Carl Benson 120	C. Clark 120	C. Hoag 80	C. Clark 80	C. Clark 80	C. Clark 80	Bessel 80	G.A. Hancy 80	W. Lewis 160	Bea Smith 80	D.H. Smith 160	H. Stargard 80	W. Stargard 80	W. Stargard 80	W. Stargard 80	
P. Husband 74.7	F.H. Smith 76.72	J. Hughes 80	F. Alger 40	C. Edwards 80	E. Cole 40	F. Fairchilds 40	J. Harris 40	J. Harris 40	Sch M. Fetterley 80	J. Harris 80	B. Meier 80	Ed. Laundry 80	G.A. Hancy 40	D.H. Smith 120	Sch C. Miller 120	C. Dichtl 40	C. N. Miller 120	J. Hall 200	J. Hall 200	
Roy L. Cook 354.05	Harris Bros 80	C. Clarey 120	N. Nicklison 80	J.W. Hull 120	J. Fetterley 80	H. Kline 80	H. Kline 80	H. Kline 80	H. Kline 80	H. Kline 80	H. Kline 80	H. Kline 80	H. Kline 80	H. Kline 80	H. Kline 80	H. Kline 80	H. Kline 80	H. Kline 80	H. Kline 80	H. Kline 80
D.D. Harris 158.49	Jec Rogans 80	O. Stewart 40	G. Burkett 80	A.E. Roberts 40	E. Taylor 80	J. Fetterley 40	H. Kline 80	H. Kline 80	H. Kline 80	H. Kline 80	H. Kline 80	H. Kline 80	H. Kline 80	H. Kline 80	H. Kline 80	H. Kline 80	H. Kline 80	H. Kline 80	H. Kline 80	H. Kline 80
F. Nestle 119.87	C. Cash 80	P. Denton 80	J.P. John 80	C. & G. Rittenhouse 160	E. Fairchild 80	J. Fetterley 120	H. Kline 80	H. Kline 80	H. Kline 80	H. Kline 80	H. Kline 80	H. Kline 80	H. Kline 80	H. Kline 80	H. Kline 80	H. Kline 80	H. Kline 80	H. Kline 80	H. Kline 80	H. Kline 80
F. Nestle 160	F.E. Clark 320	K. Krouse 240	T.E. Clark 80	E. L. Packer 320	J. Taylor 80	J. Fetterley 40	H. Kline 80	H. Kline 80	H. Kline 80	H. Kline 80	H. Kline 80	H. Kline 80	H. Kline 80	H. Kline 80	H. Kline 80	H. Kline 80	H. Kline 80	H. Kline 80	H. Kline 80	H. Kline 80
F. Nestle 160	F.E. Clark 320	K. Krouse 240	T.E. Clark 80	E. L. Packer 320	J. Taylor 80	J. Fetterley 40	H. Kline 80	H. Kline 80	H. Kline 80	H. Kline 80	H. Kline 80	H. Kline 80	H. Kline 80	H. Kline 80	H. Kline 80	H. Kline 80	H. Kline 80	H. Kline 80	H. Kline 80	H. Kline 80
Kaufman 164.80	Porter + Wyman 320	J.E. Terwilliger 160	H. Allers Jr. 160	R.W. Gannon 560	J. Taylor 80	J. Fetterley 40	H. Kline 80	H. Kline 80	H. Kline 80	H. Kline 80	H. Kline 80	H. Kline 80	H. Kline 80	H. Kline 80	H. Kline 80	H. Kline 80	H. Kline 80	H. Kline 80	H. Kline 80	H. Kline 80
Durlak 80	McGown 80	Fred. Everette 160	T.J. Walters 160	J. Allers 160	J. Taylor 80	J. Fetterley 40	H. Kline 80	H. Kline 80	H. Kline 80	H. Kline 80	H. Kline 80	H. Kline 80	H. Kline 80	H. Kline 80	H. Kline 80	H. Kline 80	H. Kline 80	H. Kline 80	H. Kline 80	H. Kline 80
A. Kalpaitis 123.41	J. Terwilliger 80	L. Rouse 80	F. Wings 40	J. Allers 120	J. Taylor 80	J. Fetterley 40	H. Kline 80	H. Kline 80	H. Kline 80	H. Kline 80	H. Kline 80	H. Kline 80	H. Kline 80	H. Kline 80	H. Kline 80	H. Kline 80	H. Kline 80	H. Kline 80	H. Kline 80	H. Kline 80
J. McGriff 165.00	McGown 80	D. Trumble 120	C. Row 120	J. Allers 80	J. Taylor 80	J. Fetterley 40	H. Kline 80	H. Kline 80	H. Kline 80	H. Kline 80	H. Kline 80	H. Kline 80	H. Kline 80	H. Kline 80	H. Kline 80	H. Kline 80	H. Kline 80	H. Kline 80	H. Kline 80	H. Kline 80
J. Terwilliger 80	J. Terwilliger 80	L. Rouse 80	F. Wings 40	J. Allers 120	J. Taylor 80	J. Fetterley 40	H. Kline 80	H. Kline 80	H. Kline 80	H. Kline 80	H. Kline 80	H. Kline 80	H. Kline 80	H. Kline 80	H. Kline 80	H. Kline 80	H. Kline 80	H. Kline 80	H. Kline 80	H. Kline 80
J. McGriff 165.00	McGown 80	D. Trumble 120	C. Row 120	J. Allers 80	J. Taylor 80	J. Fetterley 40	H. Kline 80	H. Kline 80	H. Kline 80	H. Kline 80	H. Kline 80	H. Kline 80	H. Kline 80	H. Kline 80	H. Kline 80	H. Kline 80	H. Kline 80	H. Kline 80	H. Kline 80	H. Kline 80
J. Terwilliger 80	J. Terwilliger 80	L. Rouse 80	F. Wings 40	J. Allers 120	J. Taylor 80	J. Fetterley 40	H. Kline 80	H. Kline 80	H. Kline 80	H. Kline 80	H. Kline 80	H. Kline 80	H. Kline 80	H. Kline 80	H. Kline 80	H. Kline 80	H. Kline 80	H. Kline 80	H. Kline 80	H. Kline 80
J. McGriff 165.00	McGown 80	D. Trumble 120	C. Row 120	J. Allers 80	J. Taylor 80	J. Fetterley 40	H. Kline 80	H. Kline 80	H. Kline 80	H. Kline 80	H. Kline 80	H. Kline 80	H. Kline 80	H. Kline 80	H. Kline 80	H. Kline 80	H. Kline 80	H. Kline 80	H. Kline 80	H. Kline 80

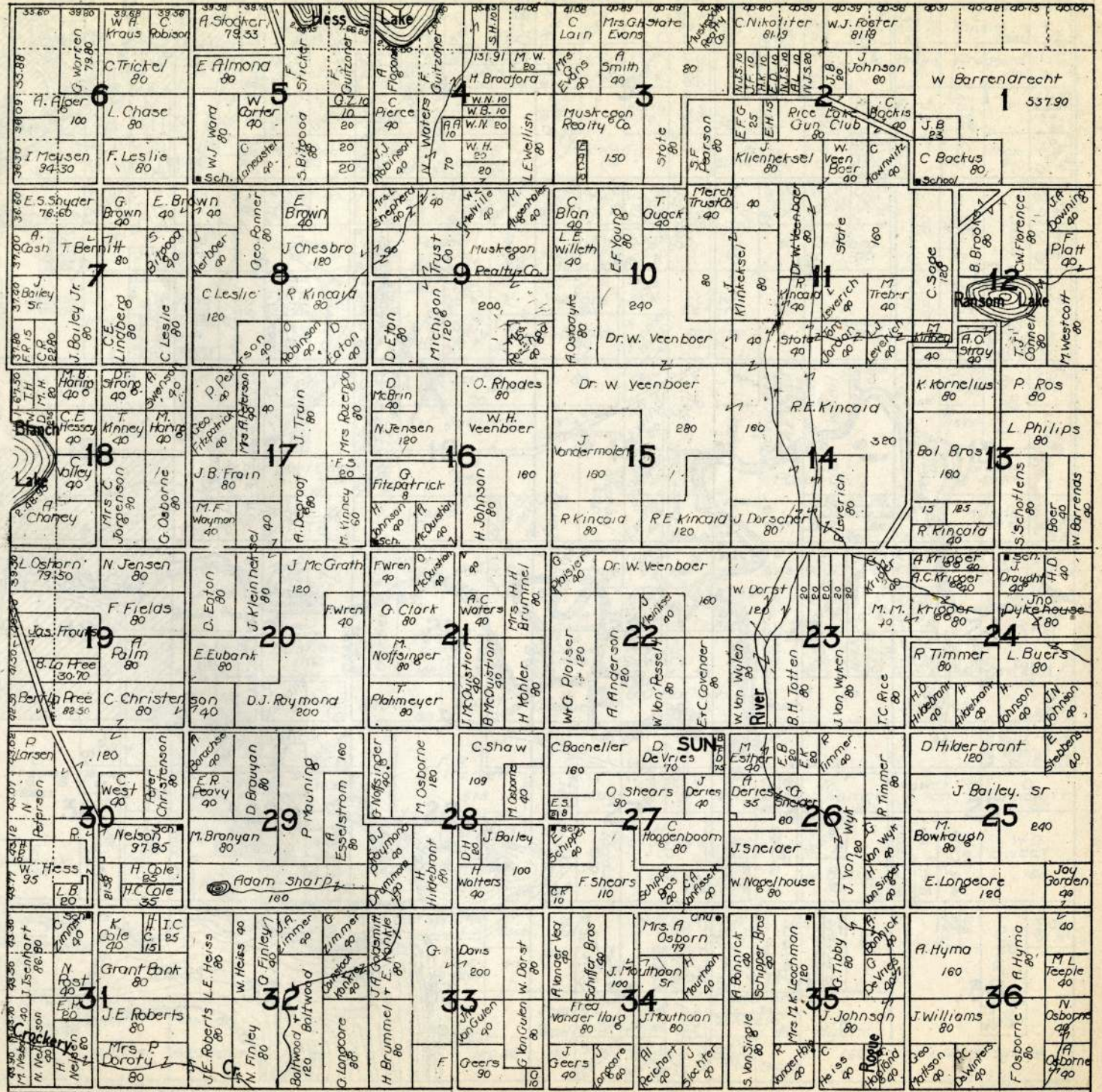
T.15 N. NORWICH R.1 W.







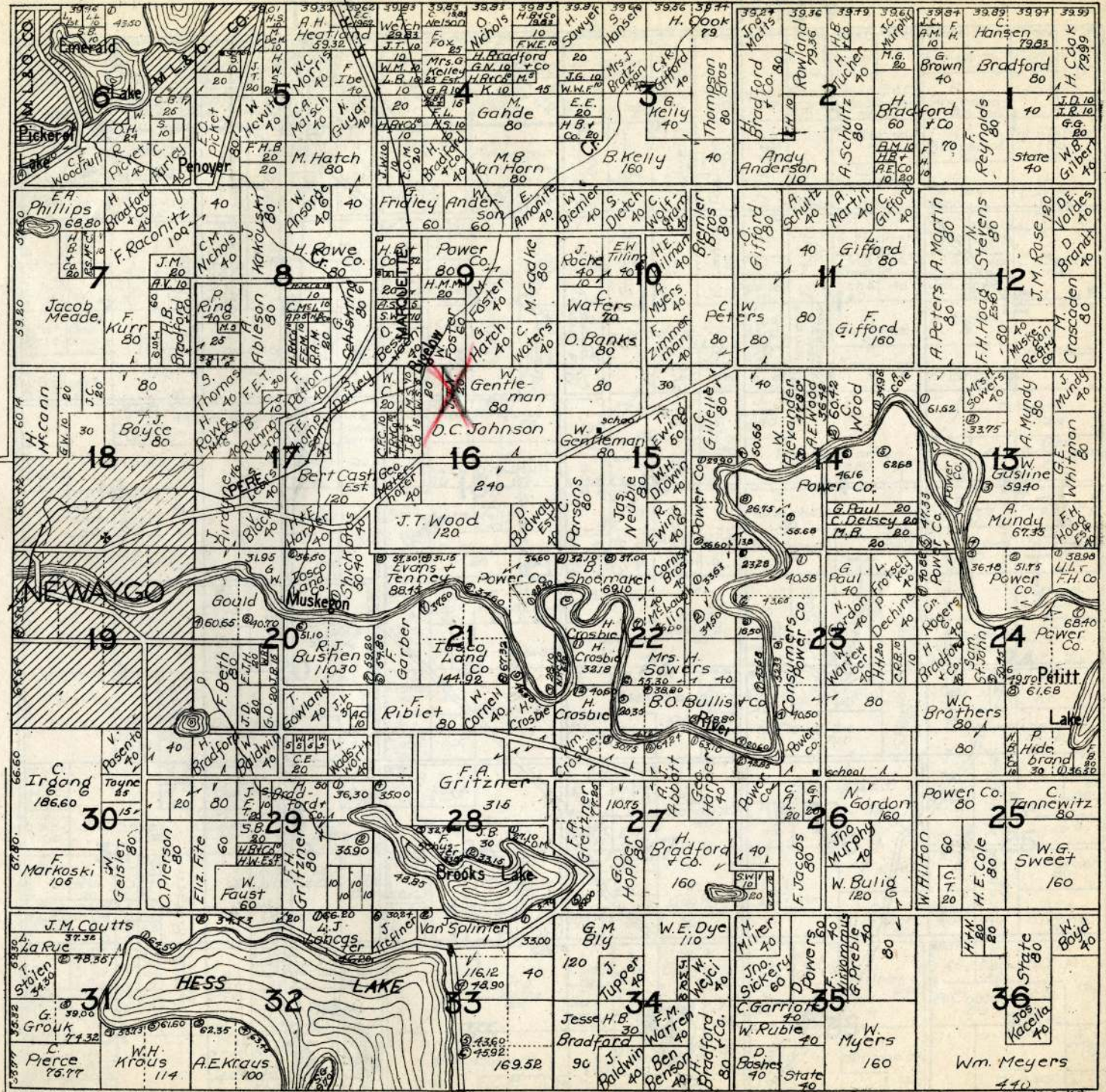
# T.11N. GRANT R.12W.



T.12 N.

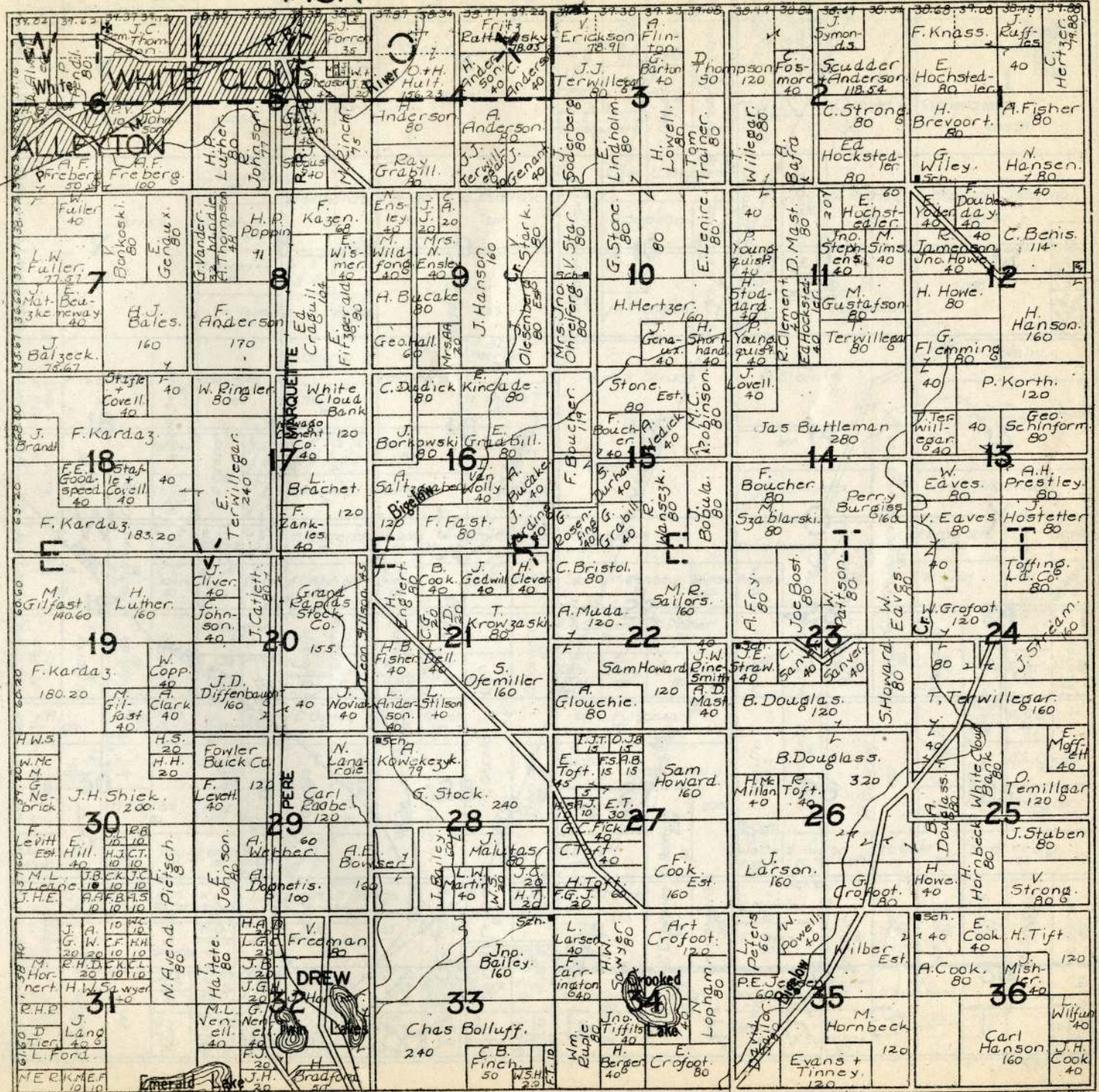
BROOKS

R.12W.



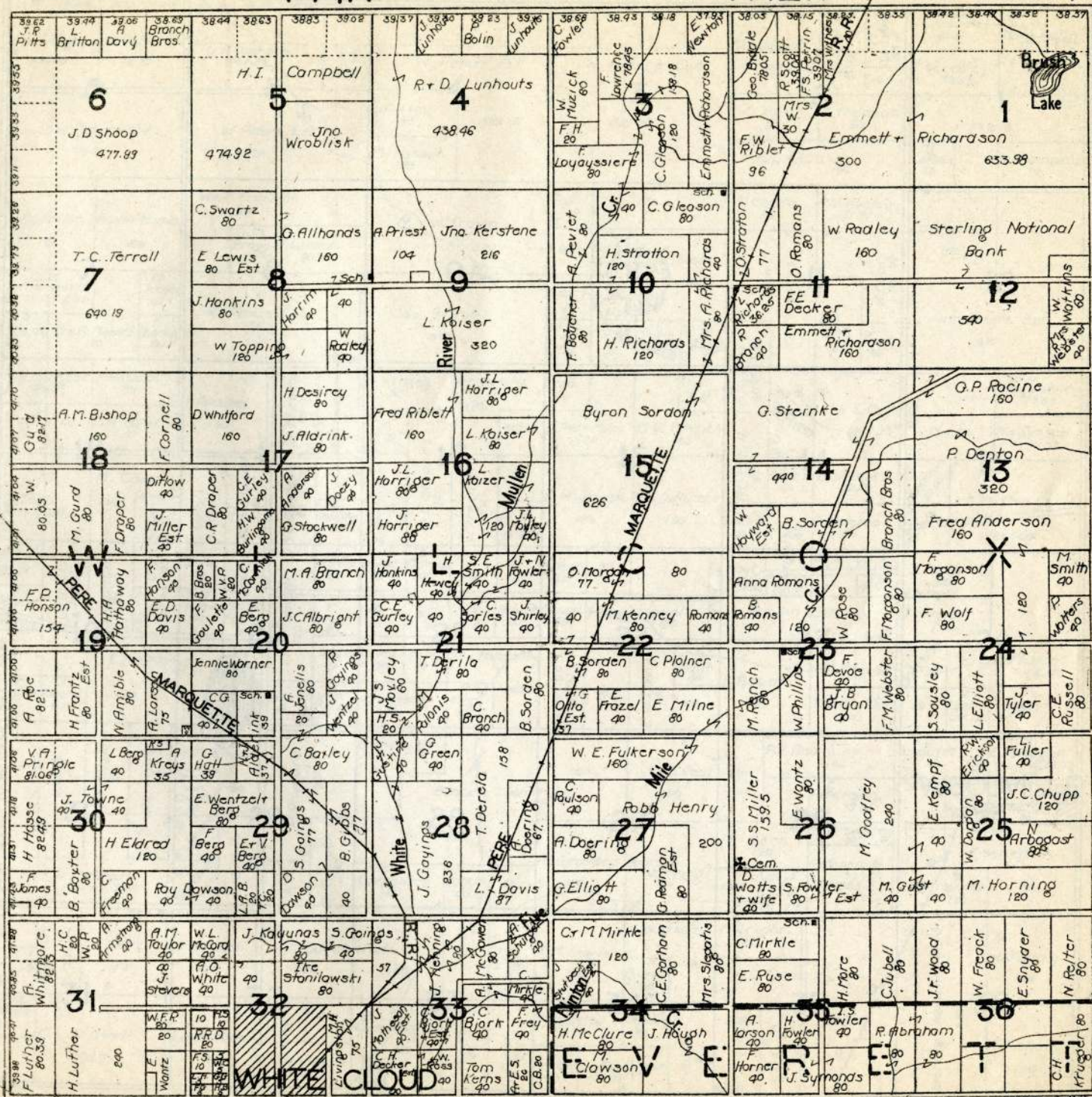
T.13N.

R.12W.

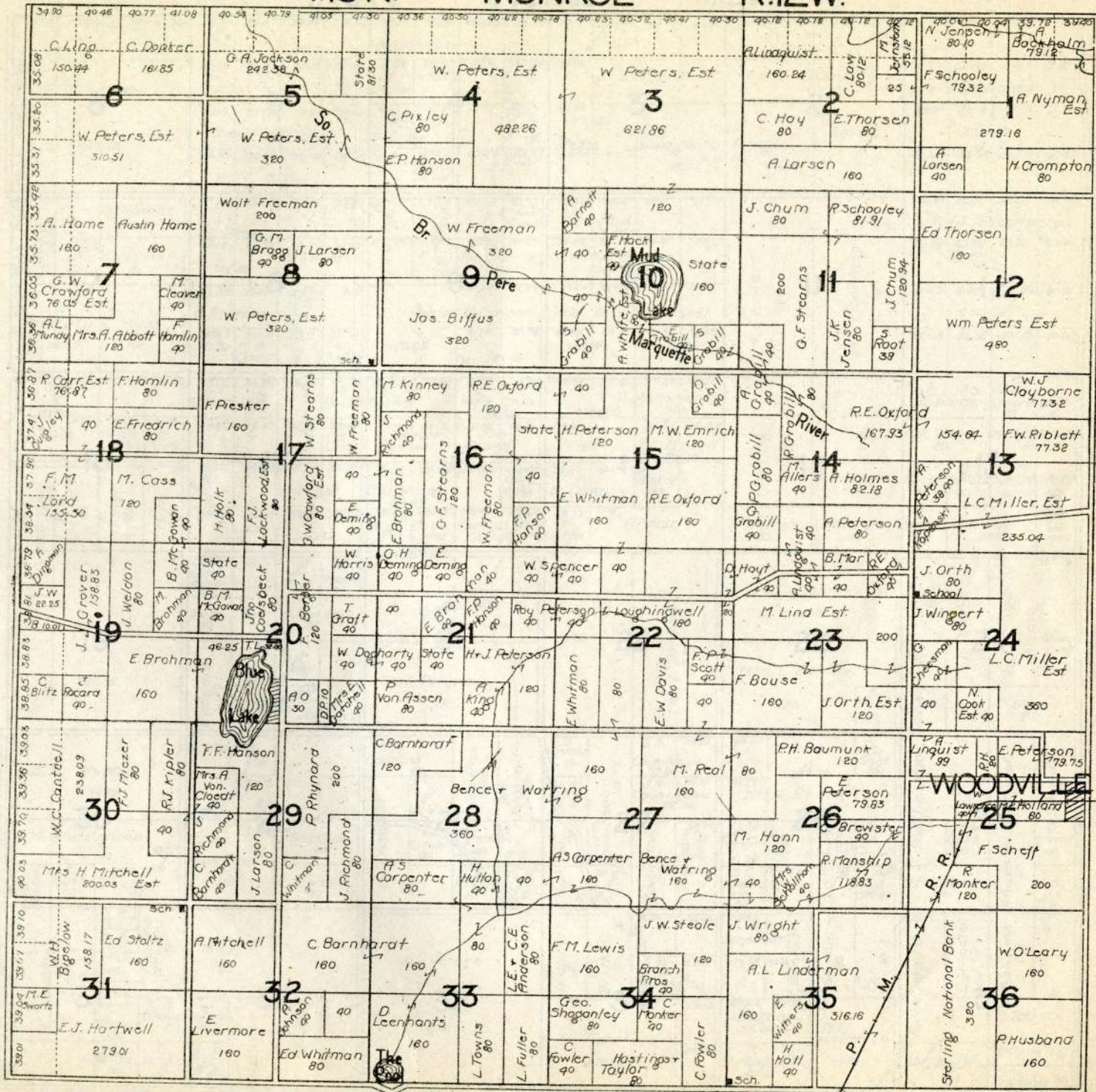


T. 14N.

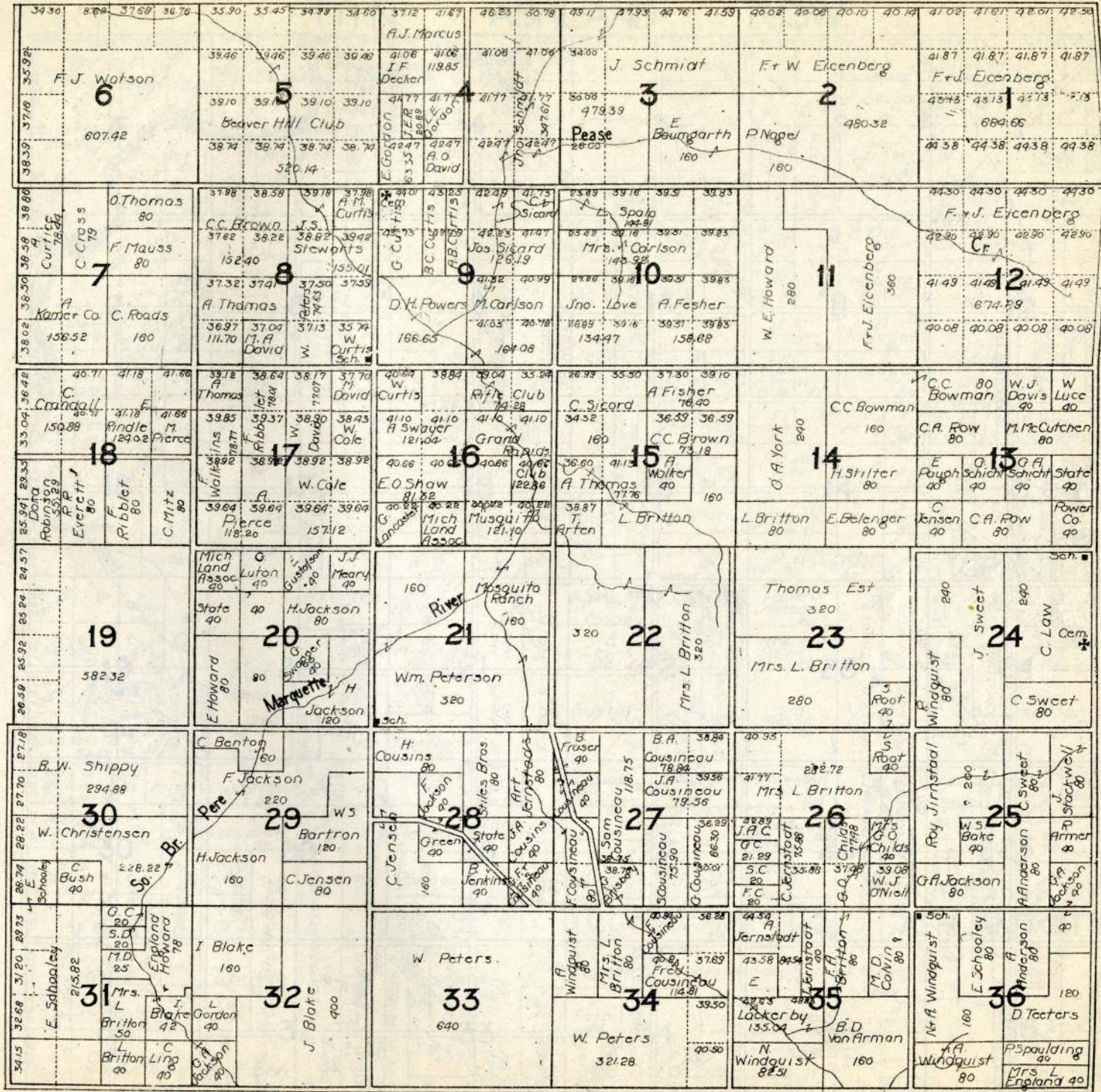
R. 12W.



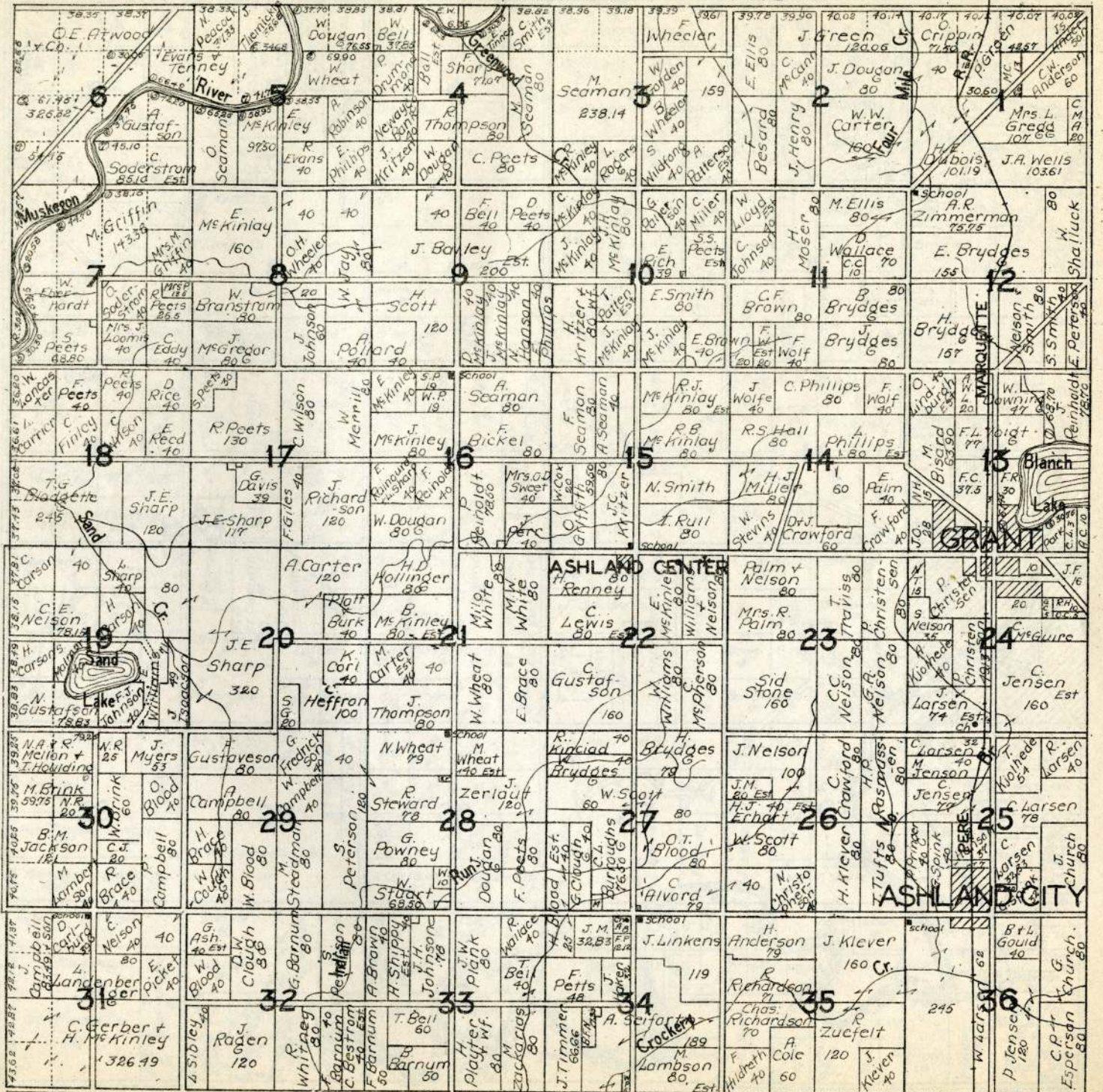
T.15 N. MONROE R.12W.



T.16 N. HOME R.12 W.



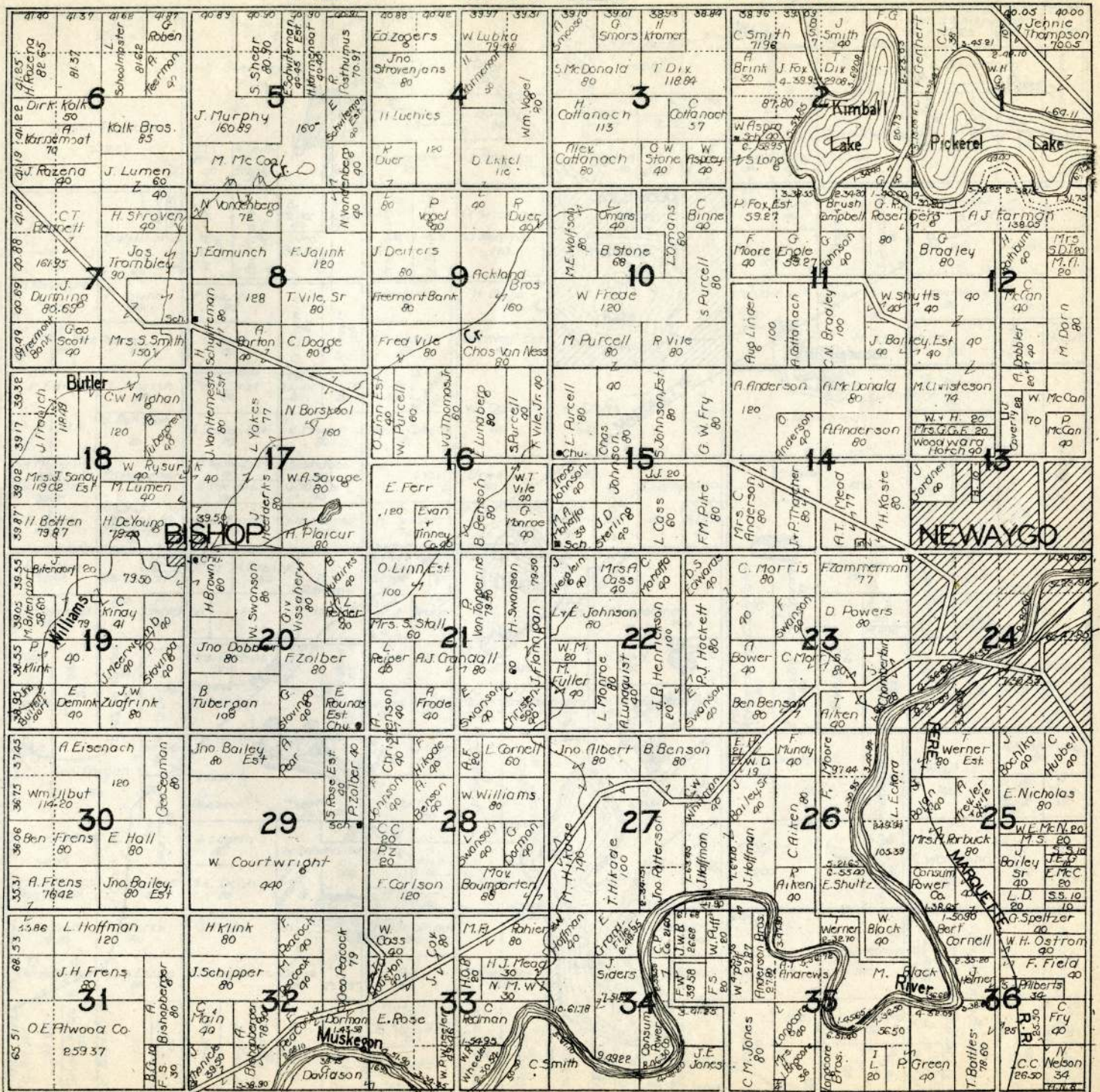
T.11N. ASHLAND R.13W.



T.12N.

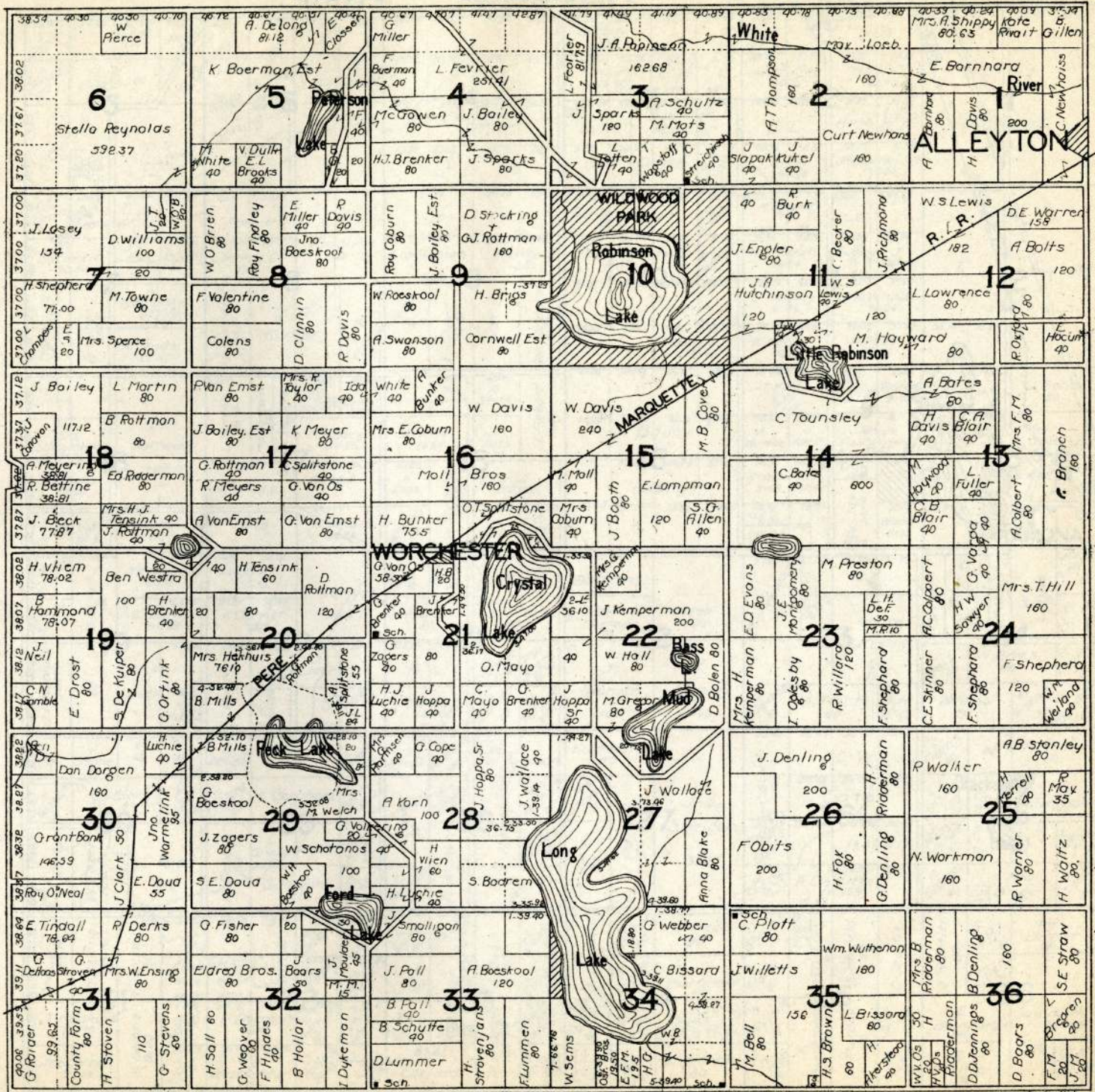
GARFIELD

R.13W.





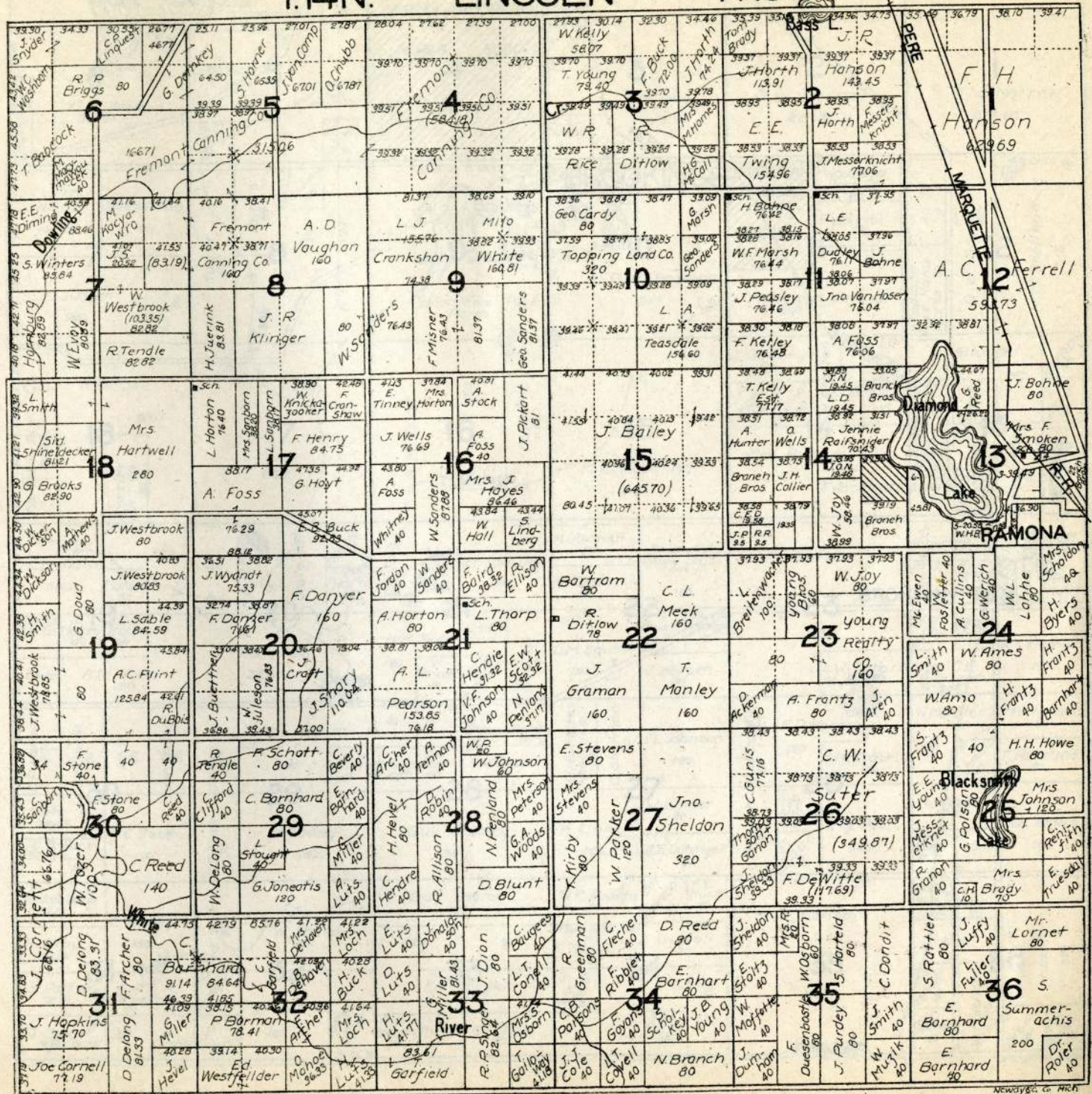
T.13N. SHERMAN R.13W.



T.14N.

LINCOLN

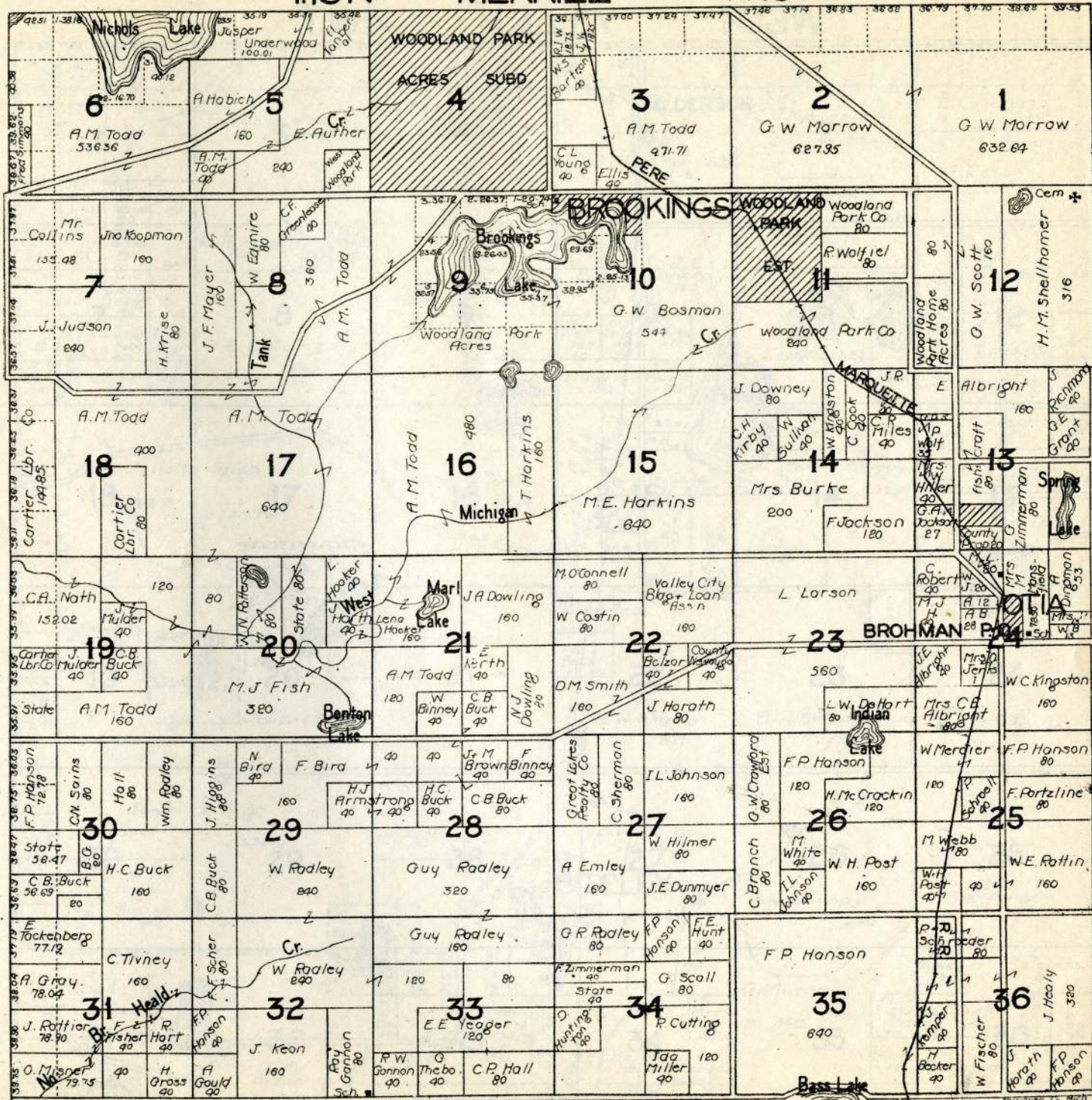
R.13W



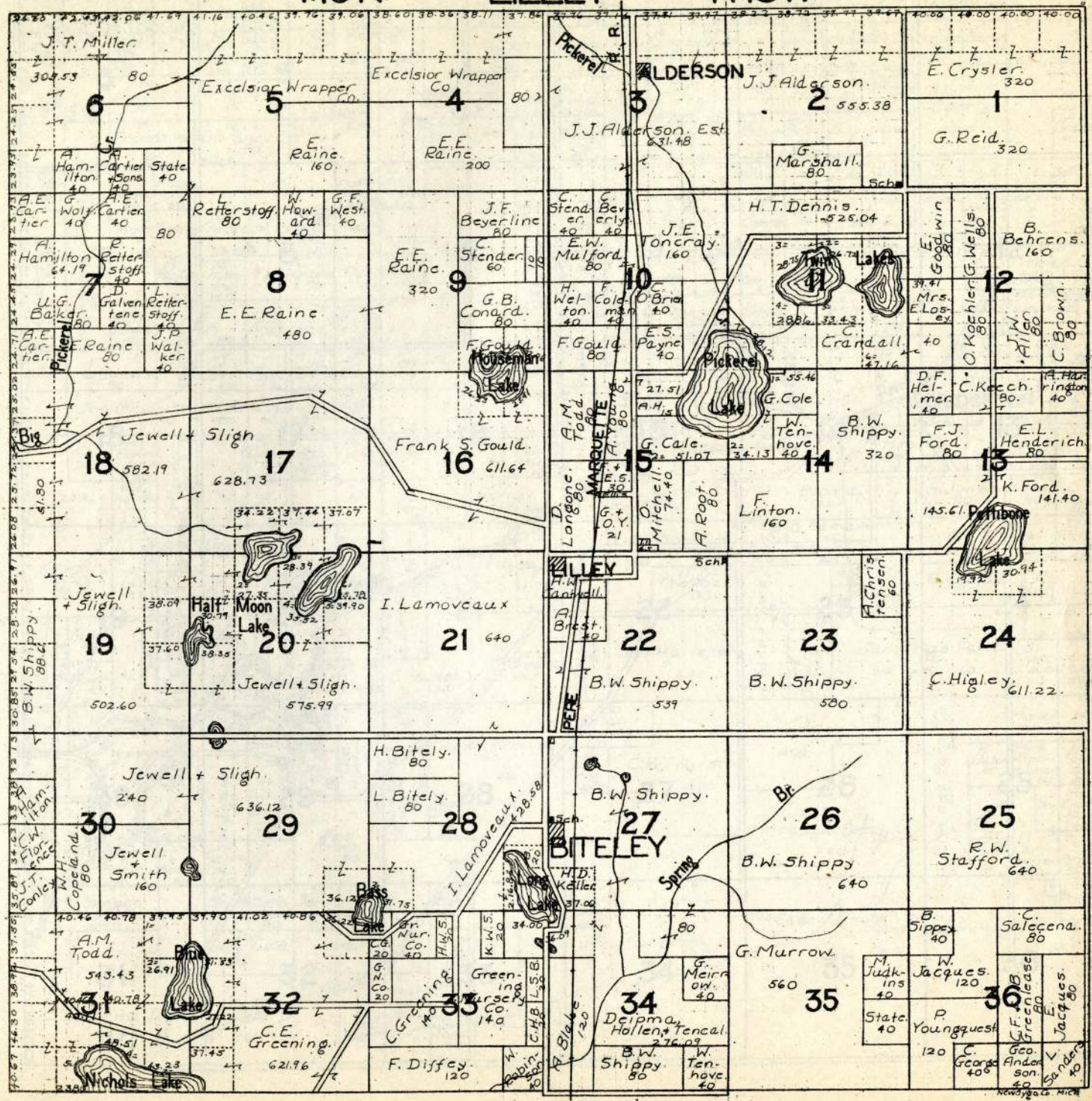
T.15N.

MERRILL

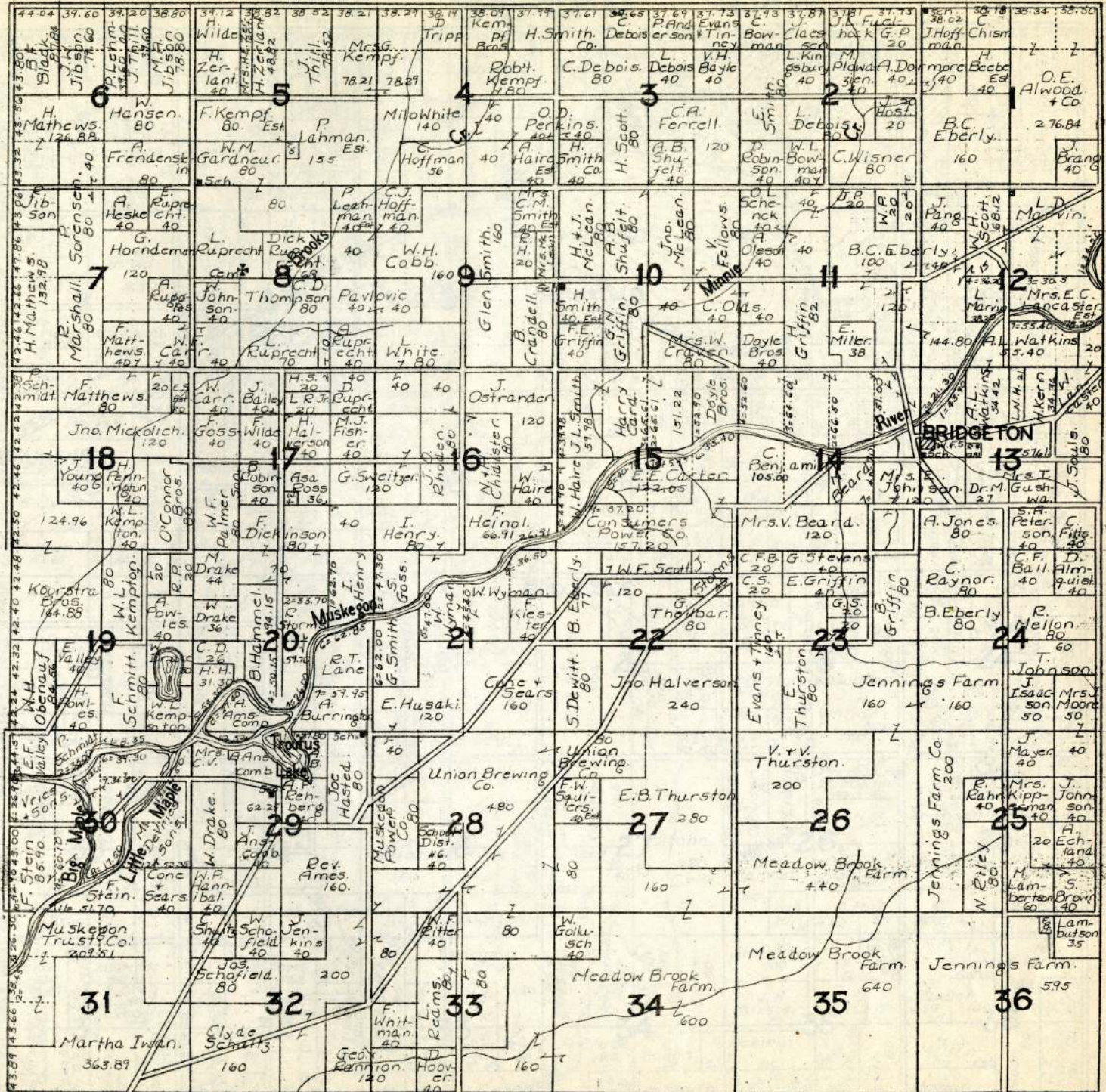
R.13W.



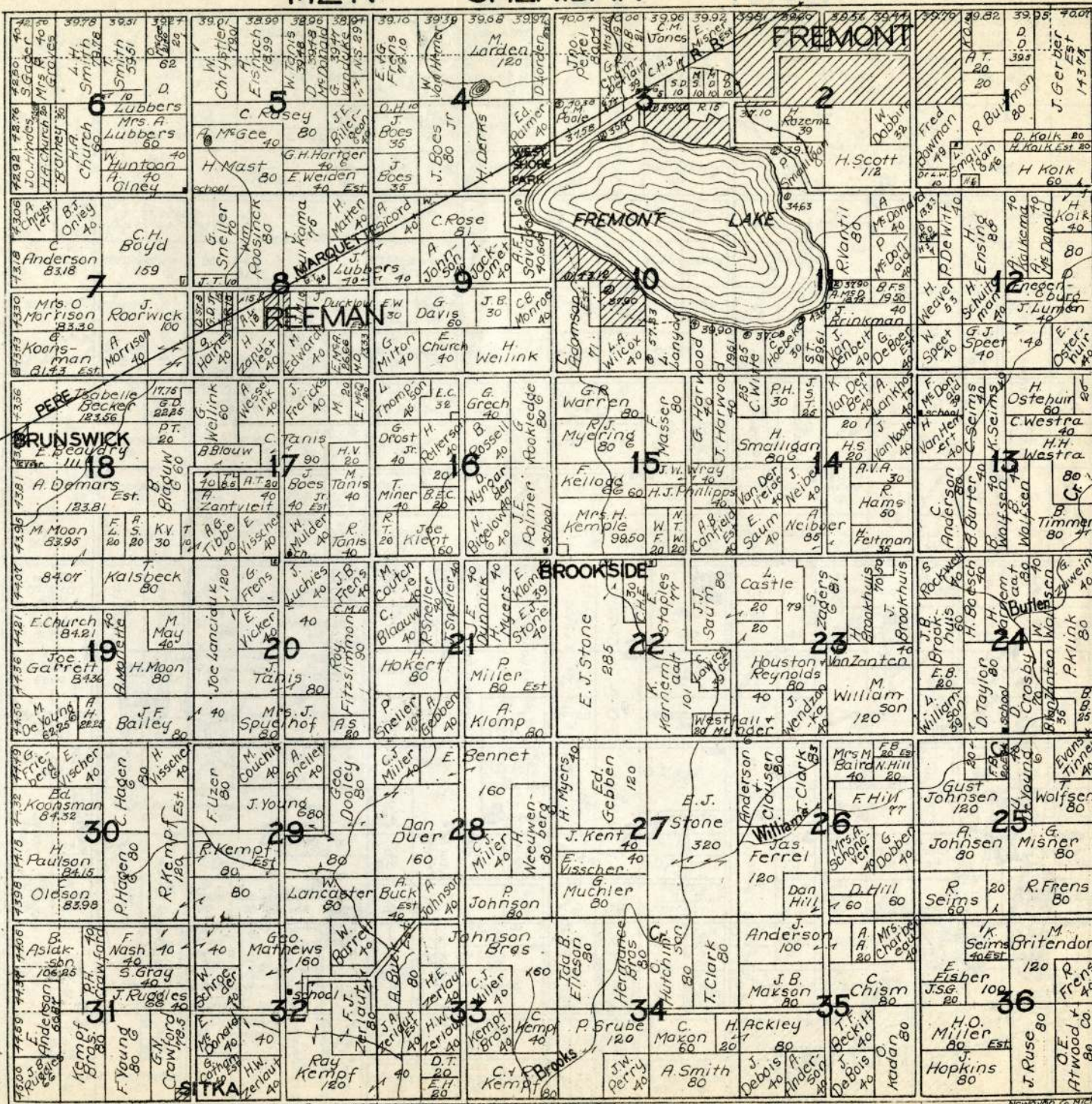
T.16N. LILLEY R.13W.



T.11N. BRIDGETON R.14W.

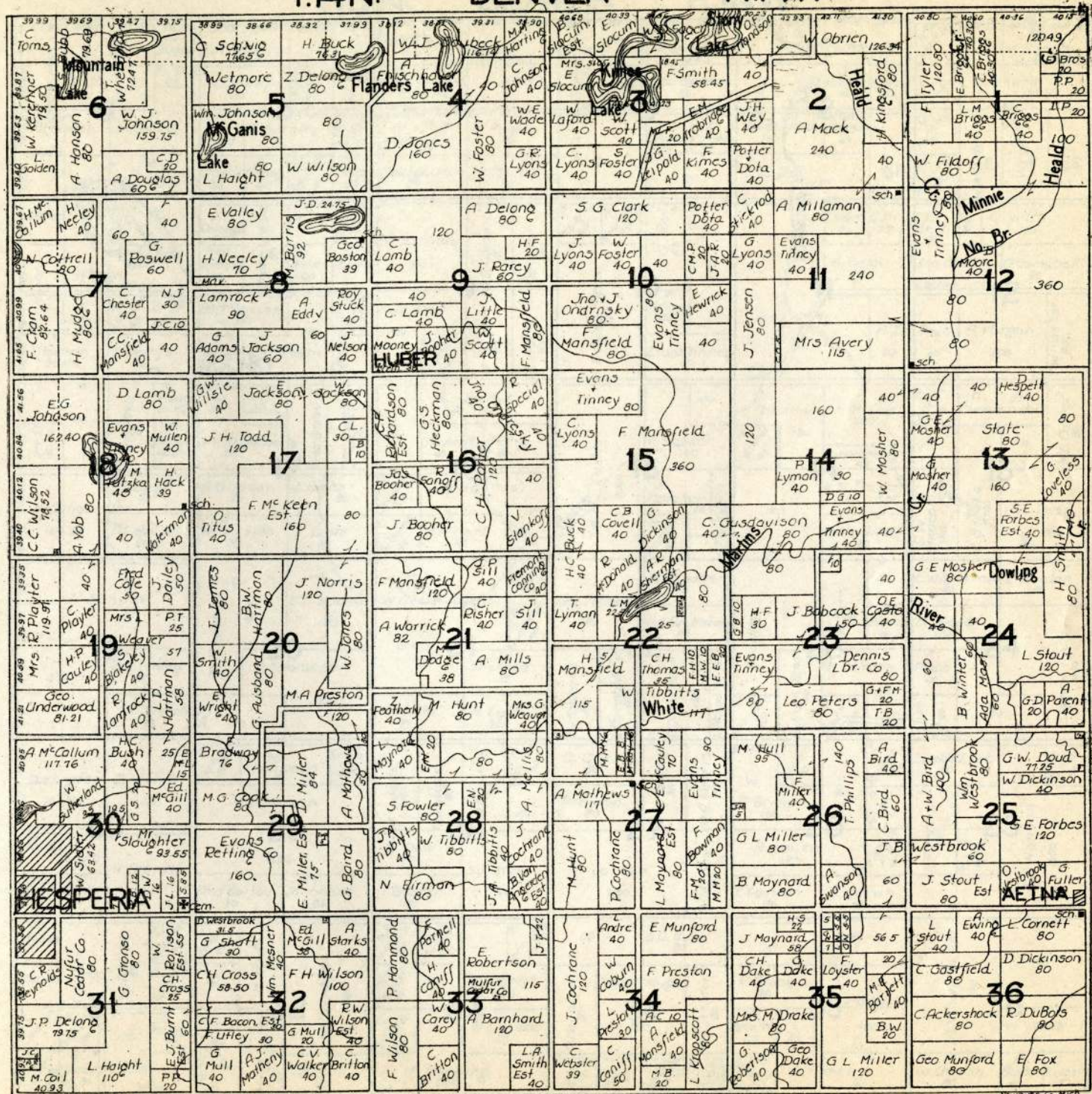


T.12 N. SHERIDAN R.14W.



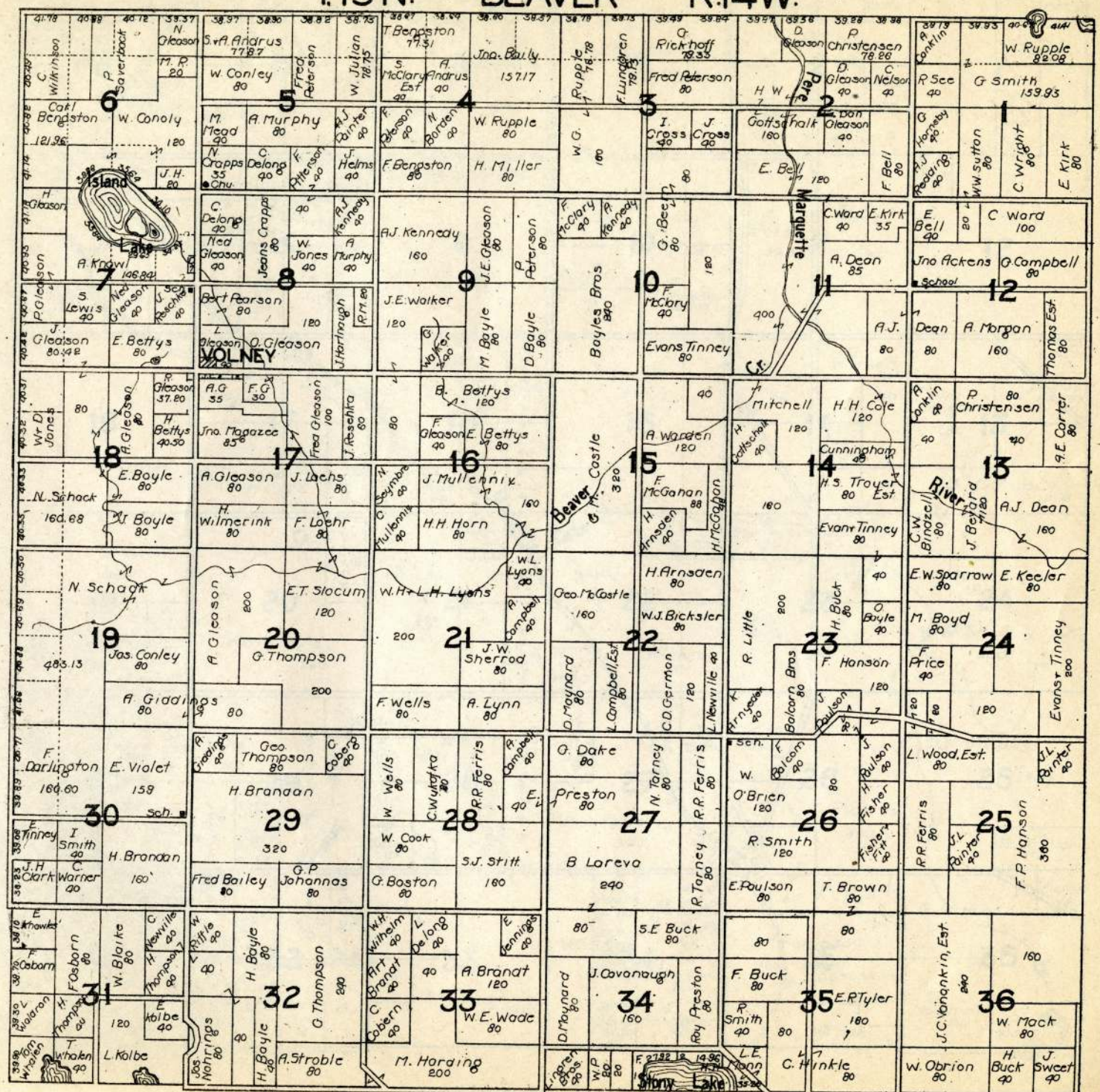


T.14N. DENVER R.14W.





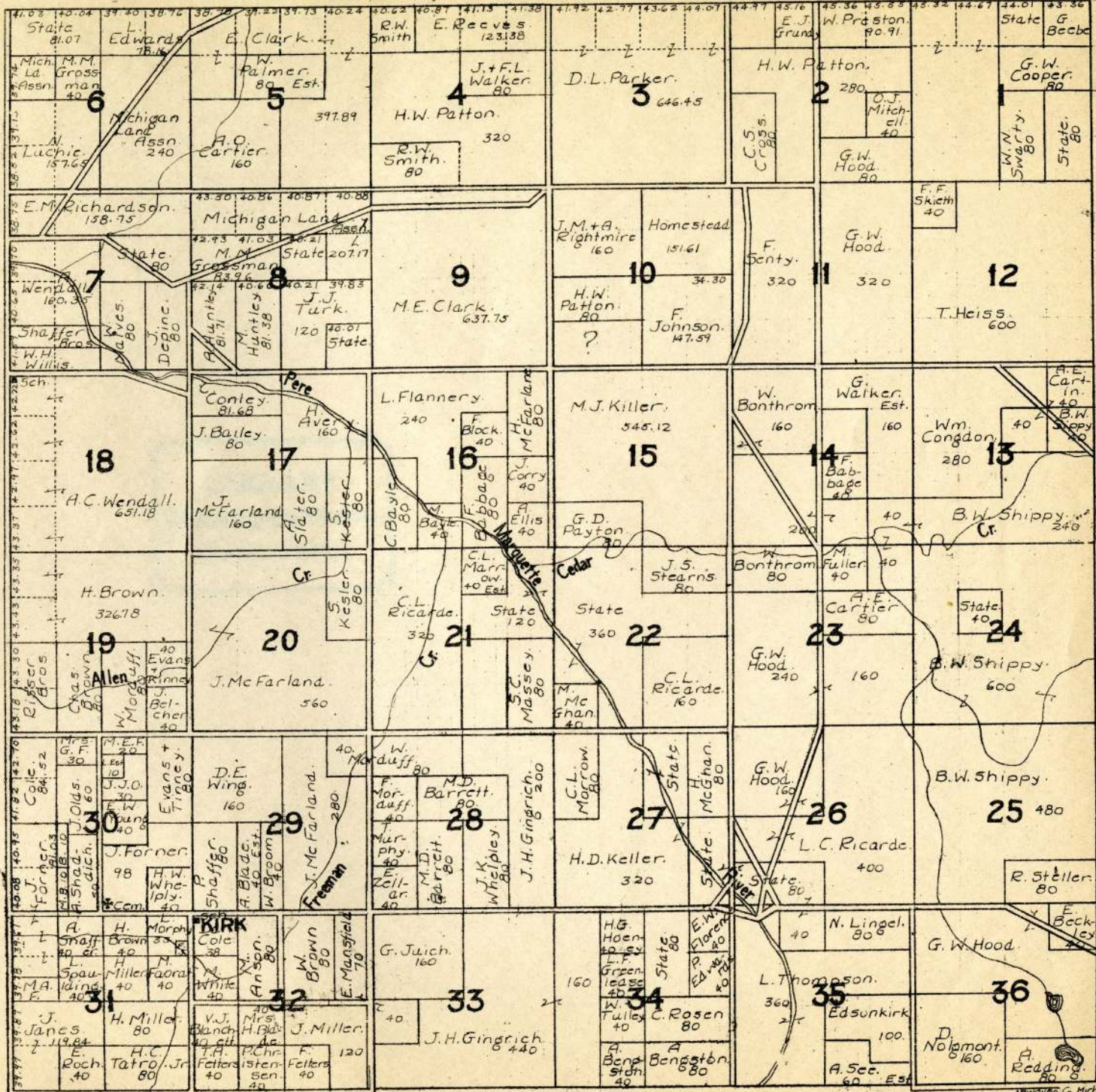
T.15 N. BEAVER R.14 W.



T.16 N.

TROY

R.14W.



Osceola County  
Abstract Company

REED CITY, MICH.

Phone 21

RAY TRUCKS, Attorney at Law

MARTIN JENSEN, Manager

Lake County  
Abstract Company

BALDWIN, MICH.

Phone 8-F2

RAY TRUCKS, Attorney at Law

CLARENCE LOREE, Manager

MICHIGAN STATE UNIVERSITY LIBRARIES



3 1293 02683 0426

North Branch  
County  
Office

Established 1879

WHITE CLOUD, MICH.

Phone 54

S. K. RIBLET

Attorney and Manager

ABSTRACTS OF TITLE

TITLE INSURANCE

TAX SERVICE

DUAL COUNTY SERVICE

ABSTRACTS

TAX PAYMENT SERVICE

TITLE INSURANCE

PLAT BOOKS

MEMBERS OF

THE MICHIGAN TITLE ASSOCIATION

—AND—

THE AMERICAN TITLE ASSOCIATION

CONSULT YOUR ABTRACTER