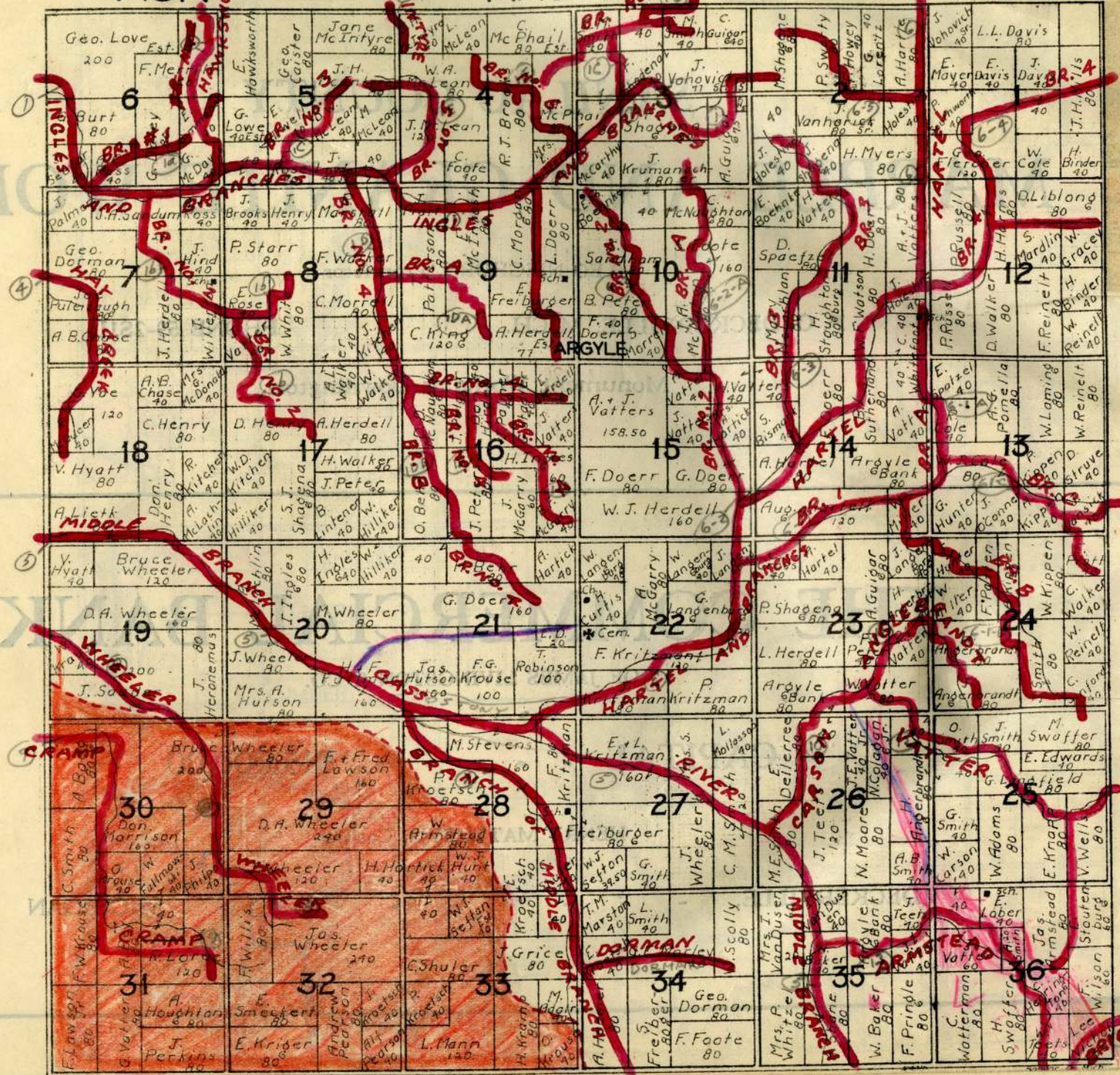


T.13N.

ARGYLE

R.13E.



ARGYLE

4

5

30

31

36

SANILAC COUNTY
MARBLE AND GRANITE WORKS

LEO NIEGHORN, Proprietor

P. O. DECKERVILLE, MICH.

PHONE 59-2S1L

Monument Works at Downington

THE COMMERCIAL BANK

OF JAMES LIVINGSTON & CO.

CAPITAL - - - - - \$15,000.00

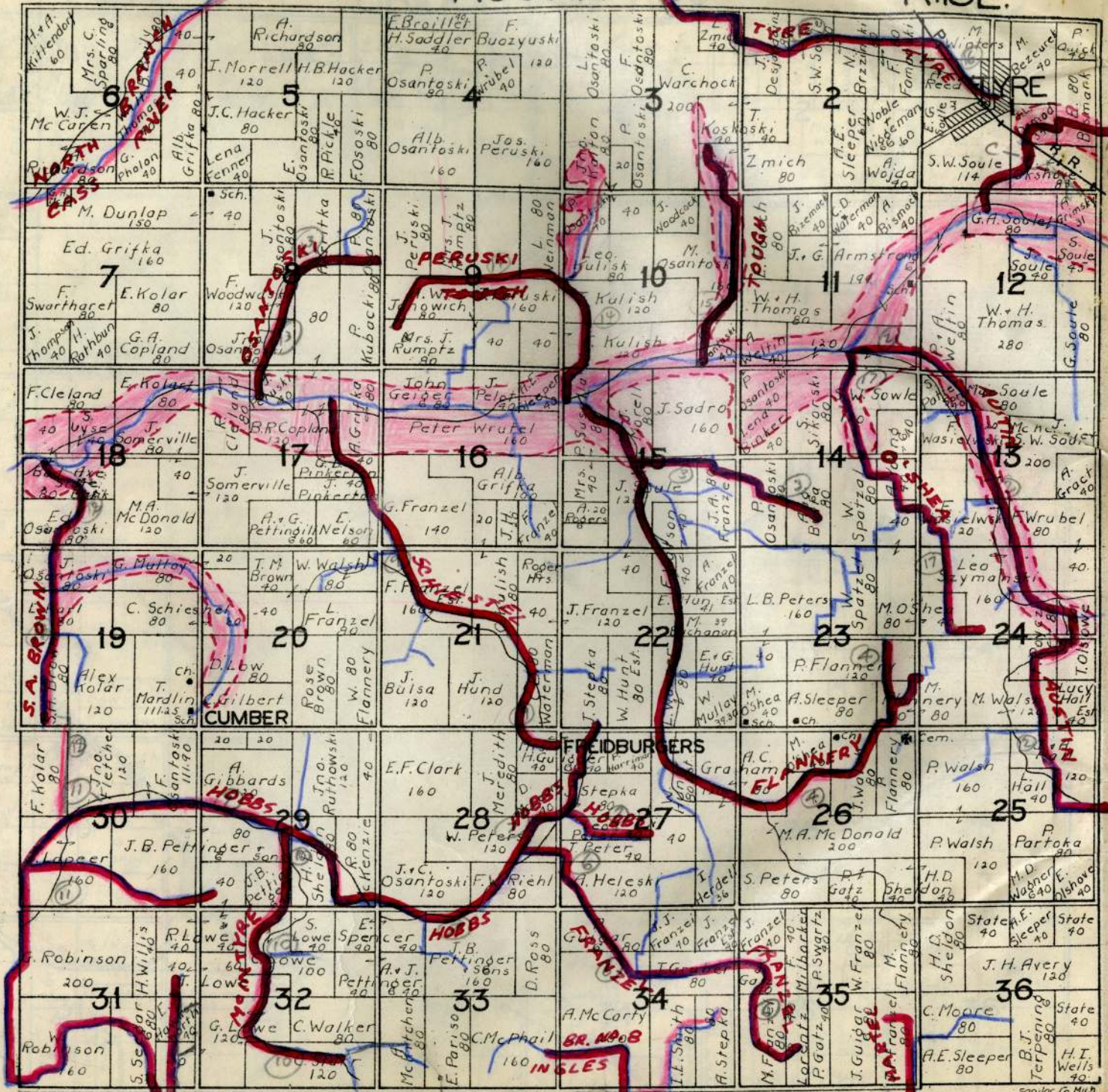
HENRY MATTHEWS, Cashier

DECKERVILLE, - - - - - MICHIGAN

T.14N.

AUSTIN

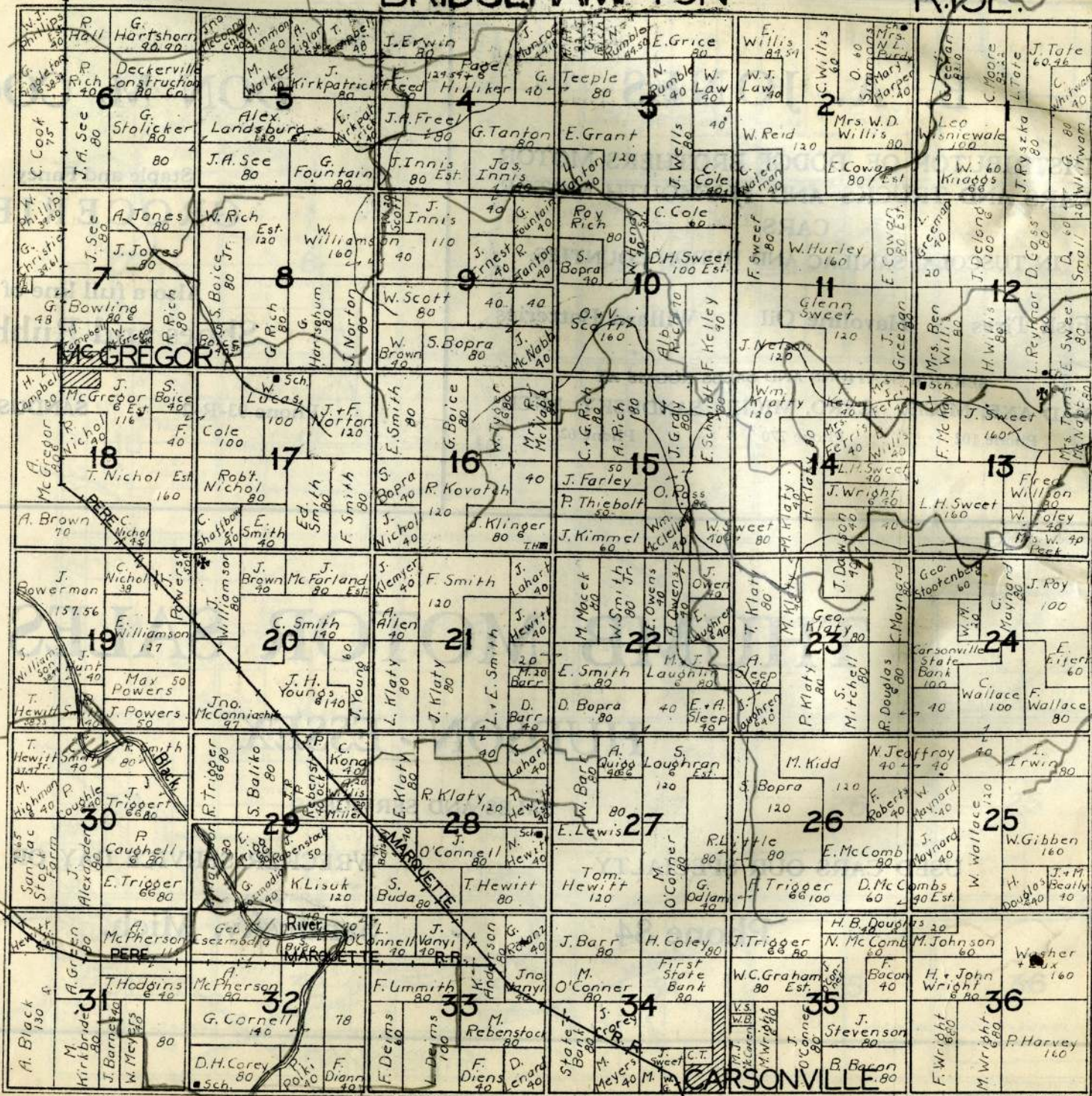
R.13E.



T. 12N.

BRIDGEHAMPTON

R. 15E.



E. A. JONES

DISTRIBUTOR OF DODGE BROTHERS MOTOR
CARS AND TRUCKS AND PLYMOUTH MOTOR
CARS

IN TUSCOLA, SANILAC AND HURON COUNTIES.

Fisk Tires Havoline Oil Willard Batteries

SERVICE STATIONS AND SALES ROOMS AT

BAD AXE, MICH. CARO, MICH. SANDUSKY, MICH.

Phone 102

Phone 270

Phone 62

DON M. COON

Staple and Fancy

GROCERIES

Also a full line of
Shoes and Rubbers

Phone 93-R-2

SANDUSKY, MICH.

THUMB MOTOR SALES

HUDSON - ESSEX

SALES AND SERVICE

USED CARS OUR SPECIALTY

WRECKER SERVICE DAY OR NIGHT

Phone 84

Sandusky, Mich.

JAMES McCAREN, President
A. E. SLEEPER, Vice President
O. A. MUNN, Vice President

CHAS. L. BELL, Cashier
E. F. VATTER, Ass't Cashier

SNOVER STATE BANK

Capital and Surplus \$30,000.00

SNOVER,

MICHIGAN

E. BROWN & SONS

ALL



PRODUCTS

OFFICIAL A. A. A. SERVICE

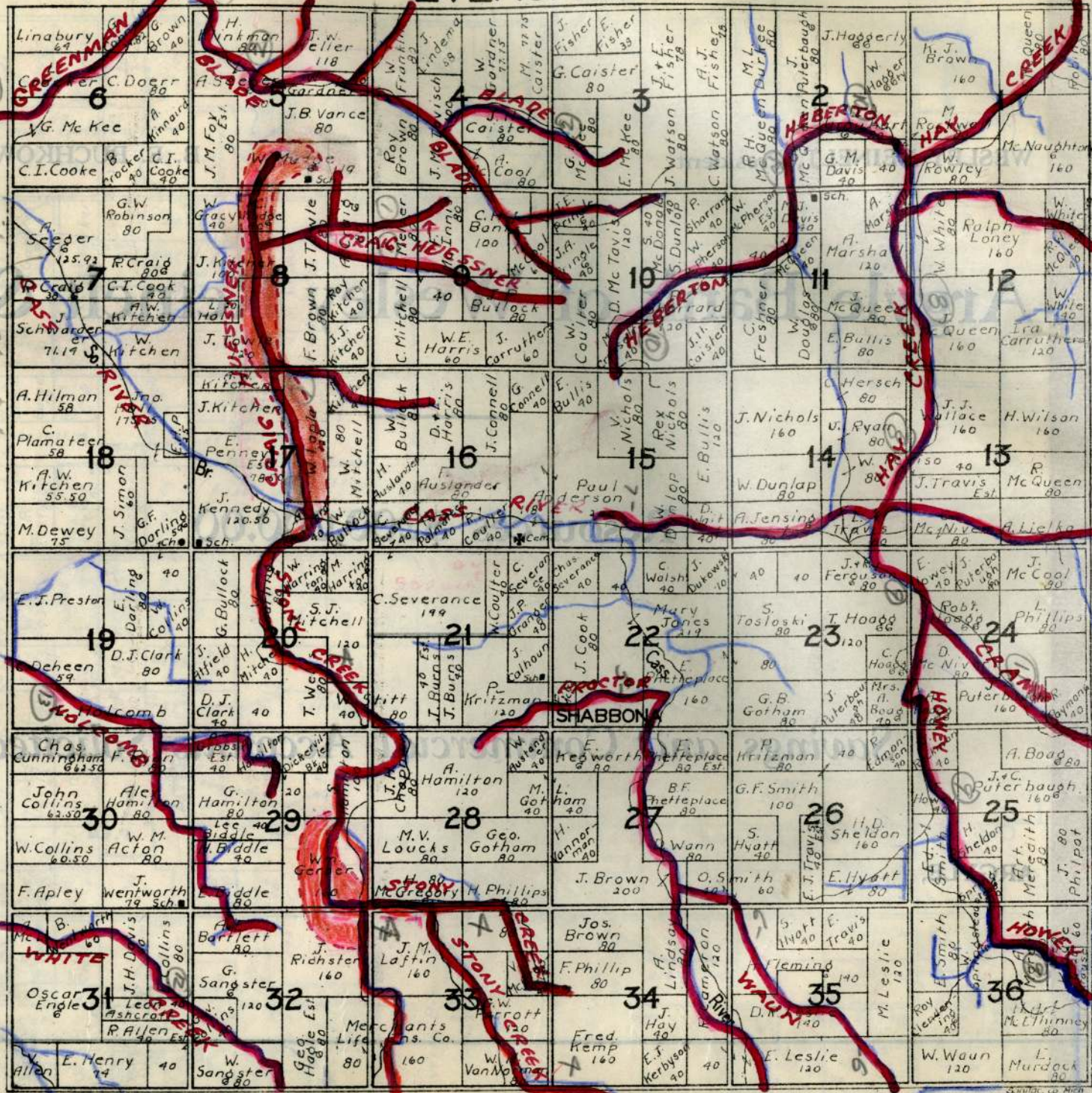
Phone 118

SANDUSKY, - - MICHIGAN

T.13N

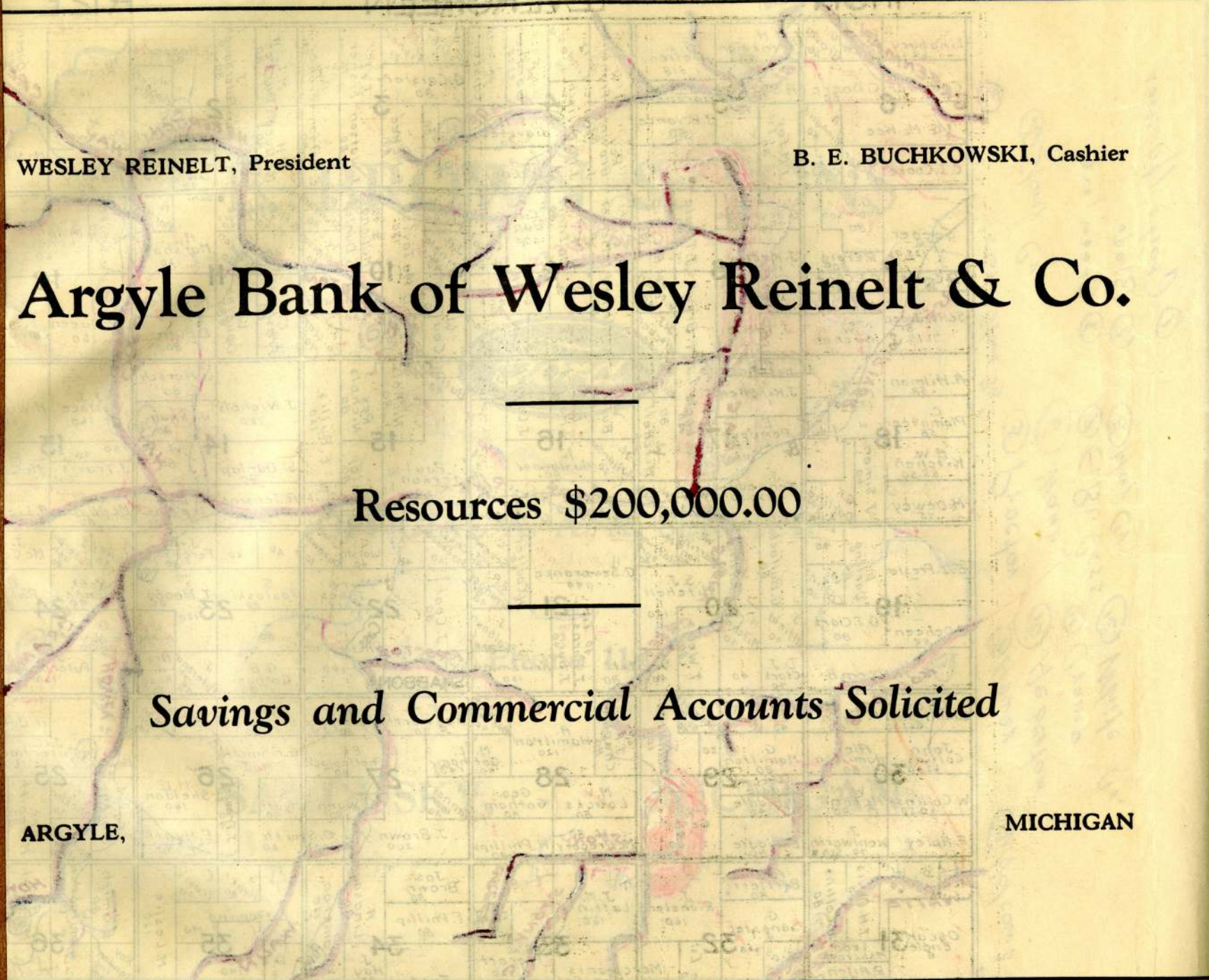
EVERGREEN

R.12E



- 1 Craig Husner
- 2 Blade
- 3 Greenland
- 4 Stony Cr
- 5 State Stone Br
- 6 Wann
- 7 C. B. Cess
- 8 Hay Cr
- 9 Proctor
- 10 Heberton
- 11 Honey
- 12 Crump
- 13 Adcoml

BUE
ELK
EVE
FOR
EX
VAL
MAR
LET
MIN
VAT



WESLEY REINELT, President

B. E. BUCHKOWSKI, Cashier

Argyle Bank of Wesley Reinelt & Co.

Resources \$200,000.00

Savings and Commercial Accounts Solicited

ARGYLE,

MICHIGAN

JAMES FOSTER, President

HOWARD FOSTER, Cashier

L. E. COCHRAN, Vice President

STATE SAVINGS BANK

PECK,

MICHIGAN

ARTHUR GRIMES & COMPANY



SALES AND SERVICE

Tires and Accessories

PECK,

MICHIGAN

T.14N. PART OF DELAWARE R.16E.



P. Vogel 68.48 W. Roberts 37.63 W. Harris 37.63	J. Heilig 80 H. Oswald 72.50 S. Roth 70	C. Oswald 80 H. Heilig 80 C. Heilig 80 C.F. Block 75 A.C. Clor 118 J. Moses 75	P. Clor 118 J. Messing 80 W. Block 90 Theo. Block 80 H. Heilig 80	T. Messing 80 H. Block 60 J. Moss 80 Jno. Smith 80 H. Heilig 80	Geo. Ulrich 40.30 Tony Michalaski 119.59 B. Holdwick 80 J. Clor 80 C. Lass 40 W. 40	E. Missing 80 A. Kirsch 80 Lass 80	T. Schack 80 A. Schocks 80 O. Erdman 160	C. He 41.60 C. Messing 121.48 H. Gebhardt 80 H. Poppt 80	G. W. Reich 80 G. He 80 Mrs. C. Miller 80	W. Wendt 80	
Ed. Hous 75.52 W. Heilig 80 M. Oswald 80 C. Oswald 80	W. Heilig 80 M. Oswald 80 C. Oswald 80	A. Oswald 80 E. Thompson 80 W. Bostwick 80 W. Vencik 80	H. Bostwick 60 W. Vencik 80 A. Moses 80 Florence Block 80 August Block 80	W. Vencik 80 A. Moses 80 Florence Block 80 August Block 80	J. Clor 40 D. Bennett 80 Andrew Cox 80	R. Klawn 160 W. Rauh 80	R. Klawn 160 W. Rauh 80	W. Mosier 80 G. Reiche 80 L. Rauh 40	C. Klaus 79 Klosterman 80 C. Klaus 80	C. Rauh 120	
A. Heilig 34 Jno. Hupp 80 H. Oswald 80	Wm. Halifax 80 H. Oswald 80	Jno. Halifax 80 A. Brud 40 F. Brud 40 Kerbo 40	A. Brud 40 F. Brud 40 Kerbo 40	W. Heiden 60 Kate Mahon 80	J. Bast. 80 A. Schobel 157.50	J. Cox 40 F. Kirsch 70 Cem.	A. Schobel 157.50	A. Popp 40 L. Poppel 40 E. Groetz 40	C. Klaus 80	L. Poppel 40 E. Groetz 40	
W. Hipp 100 J. Y. Roth Est. 75.41 L. Uhl 36.70	Mrs. F. Oswald 180 John Halifax 80	E. Hunt 80 Jno. Kerbyson 80 C. Halifax 80 M. Halifax 80	Warczynsky 120 Jno. Kerbyson 80 C. Halifax 80 S. Halifax 80	Warczynsky 120 Jno. Kerbyson 80 C. Halifax 80 S. Halifax 80	Warczynsky 120 Jno. Kerbyson 80 C. Halifax 80 S. Halifax 80	Warczynsky 120 Jno. Kerbyson 80 C. Halifax 80 S. Halifax 80	Warczynsky 120 Jno. Kerbyson 80 C. Halifax 80 S. Halifax 80	Warczynsky 120 Jno. Kerbyson 80 C. Halifax 80 S. Halifax 80	Warczynsky 120 Jno. Kerbyson 80 C. Halifax 80 S. Halifax 80	Warczynsky 120 Jno. Kerbyson 80 C. Halifax 80 S. Halifax 80	
Geo. Noble 75.86 L. Halifax 80 G. Rath 160 W. Donald 40	H. Halifax 80 J. Oswald 40 J. Higgins 80 J. Mc 80	N. Hunt 80 H. Rieger 80 N. Guitary 80 Donald 80	H. Rieger 80 N. Guitary 80 Donald 80	H. Rieger 80 N. Guitary 80 Donald 80	H. Rieger 80 N. Guitary 80 Donald 80	H. Rieger 80 N. Guitary 80 Donald 80	H. Rieger 80 N. Guitary 80 Donald 80	H. Rieger 80 N. Guitary 80 Donald 80	H. Rieger 80 N. Guitary 80 Donald 80	H. Rieger 80 N. Guitary 80 Donald 80	H. Rieger 80 N. Guitary 80 Donald 80
J. Dyer 210 W. Olmara 100 M. Mc Namara 80	Wm. Mc Donald Est. 120 W. Pool 80 Mrs. A. Brophy 80	C. W. Wolf 80 W. Wolf 80 F. 120 B. Kramer 80	C. W. Wolf 80 W. Wolf 80 F. 120 B. Kramer 80	C. W. Wolf 80 W. Wolf 80 F. 120 B. Kramer 80	C. W. Wolf 80 W. Wolf 80 F. 120 B. Kramer 80	C. W. Wolf 80 W. Wolf 80 F. 120 B. Kramer 80	C. W. Wolf 80 W. Wolf 80 F. 120 B. Kramer 80	C. W. Wolf 80 W. Wolf 80 F. 120 B. Kramer 80	C. W. Wolf 80 W. Wolf 80 F. 120 B. Kramer 80	C. W. Wolf 80 W. Wolf 80 F. 120 B. Kramer 80	C. W. Wolf 80 W. Wolf 80 F. 120 B. Kramer 80
J. Donion Est. 148.99 J. Brophy 73.27 B.L. 80 Thayer	W. Pool 80 E. Warezynsky 80 Mrs. N. Oswald 80 Fred 40 Warezynsky 80 A. Brown 120	E. Cripps 80 T. Young 80 Mary Varty 80 W. Young 80 D. Taggart 80 W. O'Brien 80 F. Varty 80	E. Cripps 80 T. Young 80 Mary Varty 80 W. Young 80 D. Taggart 80 W. O'Brien 80 F. Varty 80	E. Cripps 80 T. Young 80 Mary Varty 80 W. Young 80 D. Taggart 80 W. O'Brien 80 F. Varty 80	E. Cripps 80 T. Young 80 Mary Varty 80 W. Young 80 D. Taggart 80 W. O'Brien 80 F. Varty 80	E. Cripps 80 T. Young 80 Mary Varty 80 W. Young 80 D. Taggart 80 W. O'Brien 80 F. Varty 80	E. Cripps 80 T. Young 80 Mary Varty 80 W. Young 80 D. Taggart 80 W. O'Brien 80 F. Varty 80	E. Cripps 80 T. Young 80 Mary Varty 80 W. Young 80 D. Taggart 80 W. O'Brien 80 F. Varty 80	E. Cripps 80 T. Young 80 Mary Varty 80 W. Young 80 D. Taggart 80 W. O'Brien 80 F. Varty 80	E. Cripps 80 T. Young 80 Mary Varty 80 W. Young 80 D. Taggart 80 W. O'Brien 80 F. Varty 80	E. Cripps 80 T. Young 80 Mary Varty 80 W. Young 80 D. Taggart 80 W. O'Brien 80 F. Varty 80

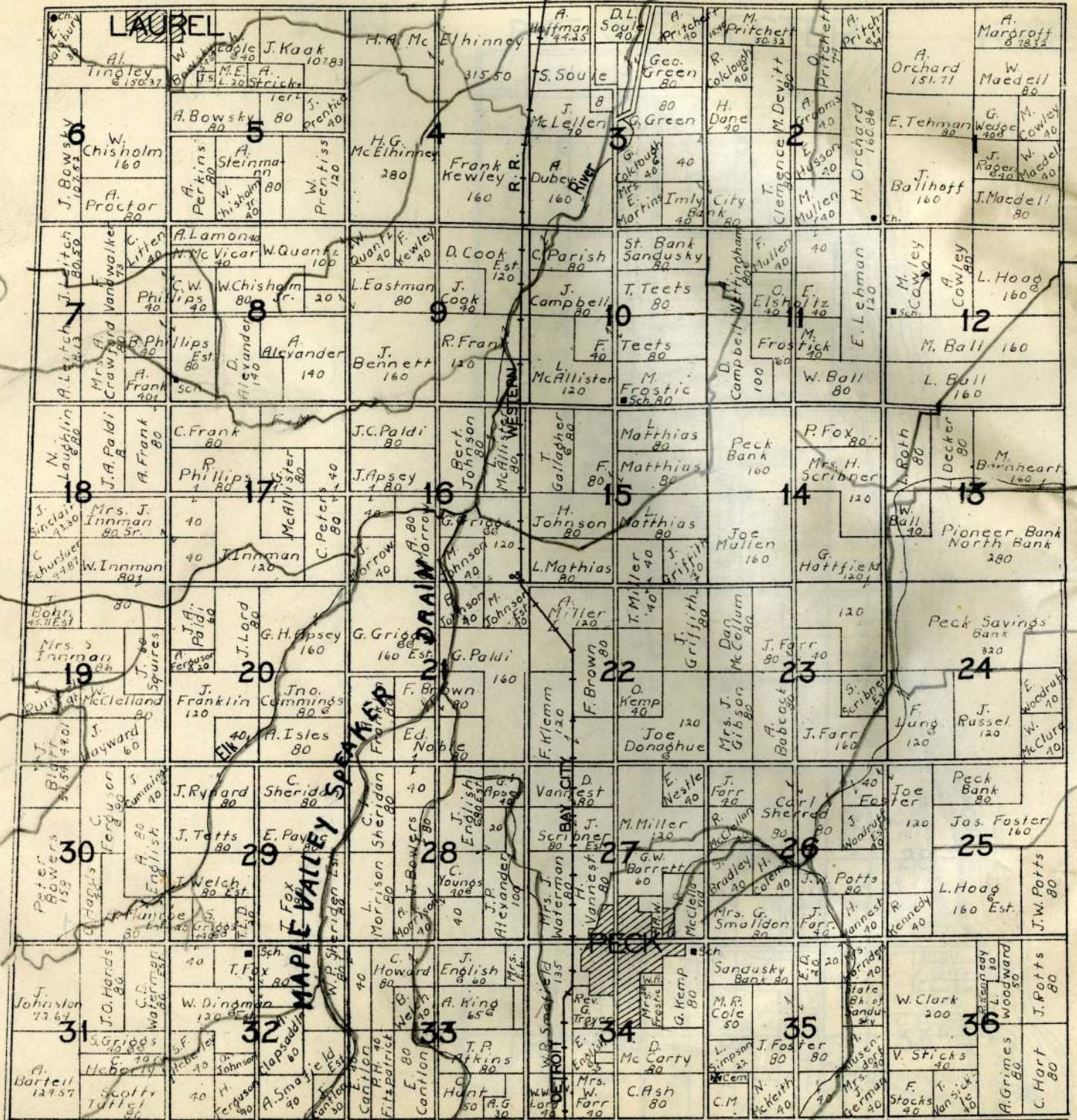
MILWAUKEE

CHARLESTON

TION.

ELK

R.14E.



DAVID CROREY, President
W. C. VIVIAN, Vice President

W. J. McCAREN, Cashier
F. C. CROREY, Ass't Cashier

EXCHANGE STATE BANK

Capital and Surplus \$45,000.00

CARSONVILLE,

MICHIGAN

CHAS. M. COOK

W. J. McCAREN

DAVID CROREY

FRANK CROREY

JAMES McCAREN

EXCHANGE BANK

OF

CHAS. M. COOK & CO.

A CO-PARTNERSHIP

CAPITAL AND SURPLUS \$15,000.00

PARTNERS ADDITIONAL RESPONSIBILITY \$100,000.00

McGREGOR, - - - - -

MICHIGAN

WM. J. REGAN

**WILLYS-KNIGHT AND WHIPPET
SALES AND SERVICE**

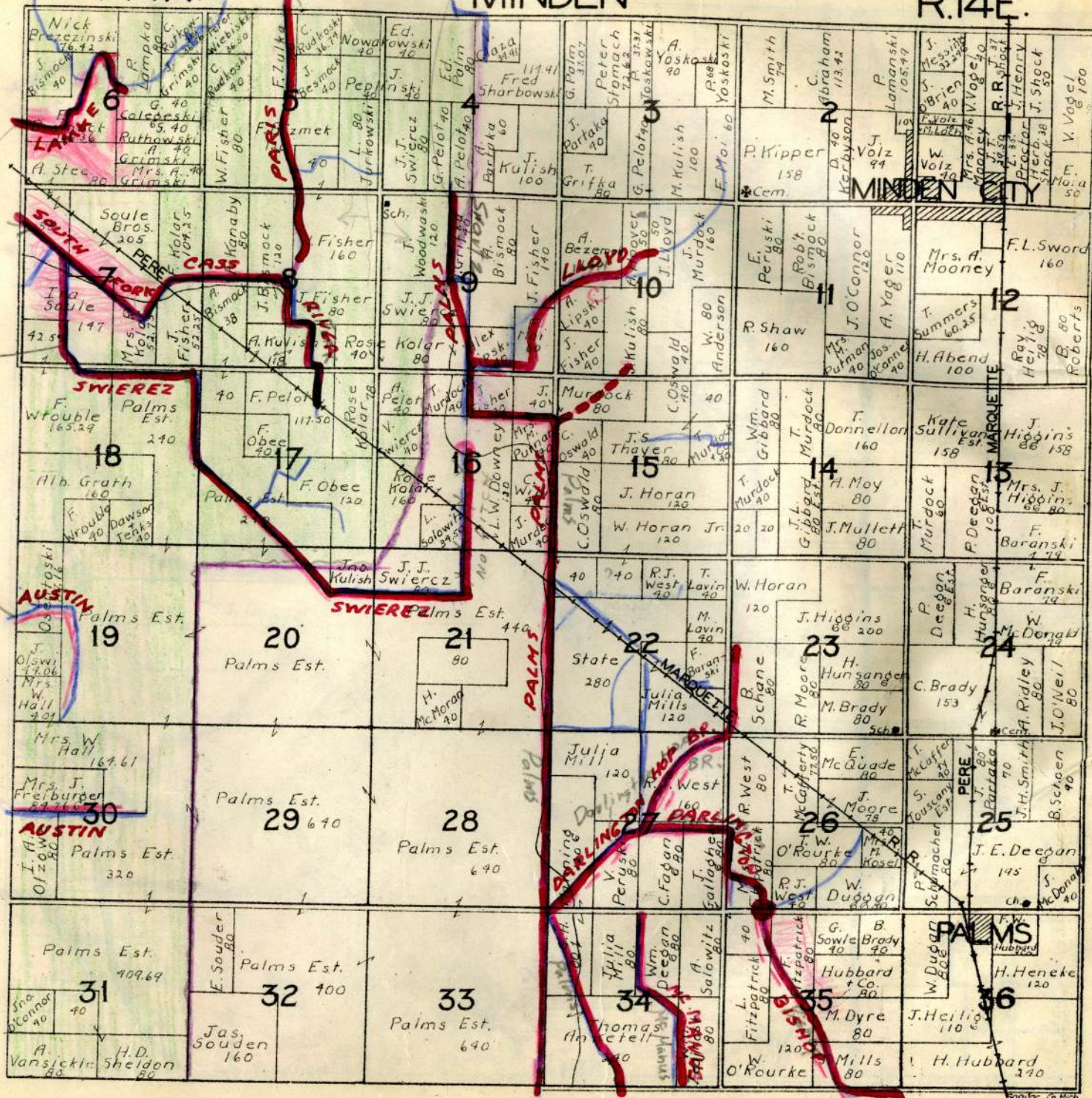
Phone 163

BROWN CITY, MICHIGAN

T. 14N.

MINDEN

R. 14E.



Lamke
S. Fork

Swiercz

Austin

Swiercz??
Poland??

Sec. 27 - Darlington
Dr. - wind filled
with muck in 4 years

Sec. 35 - Bridge
needed, water
will flow N. or S.

MAR
ION

MIN

VAT

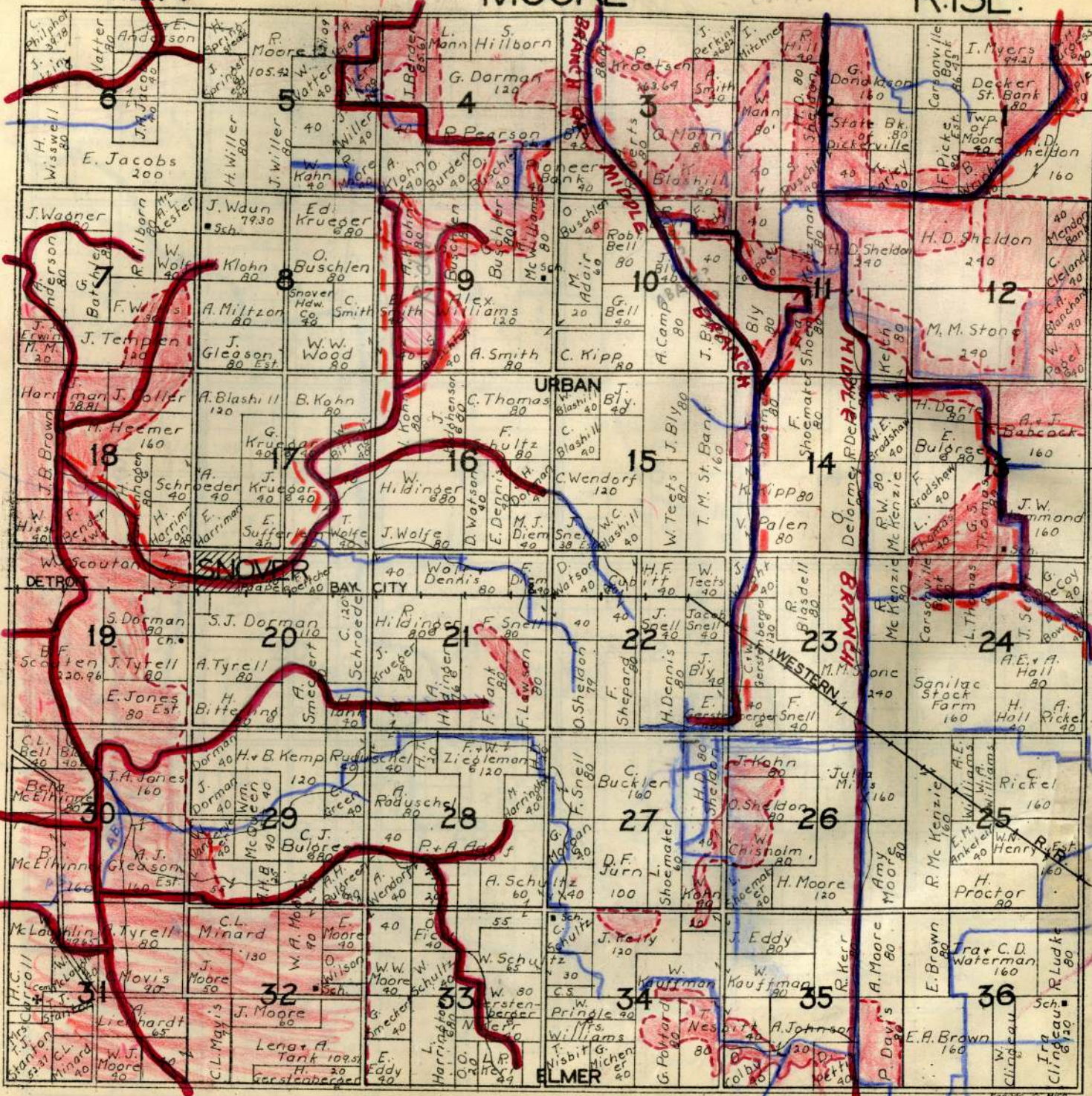
1-Cass R., S.Br.

T.12N.

MOORE

R.13E.

NOT - PHOTO CH.
DR. OFF.
COMM



Turtle Cr

MAR
ION

MOO

WAT

A. E. SLEEPER, President
JOHN P. NIGGEMAN, Vice President

WALTER CALKINS, Cashier
CHAS. O. MURRAY, Ass't Cashier

STATE BANK OF APPELEGATE

Capital \$20,000.00

Surplus \$4,000.00

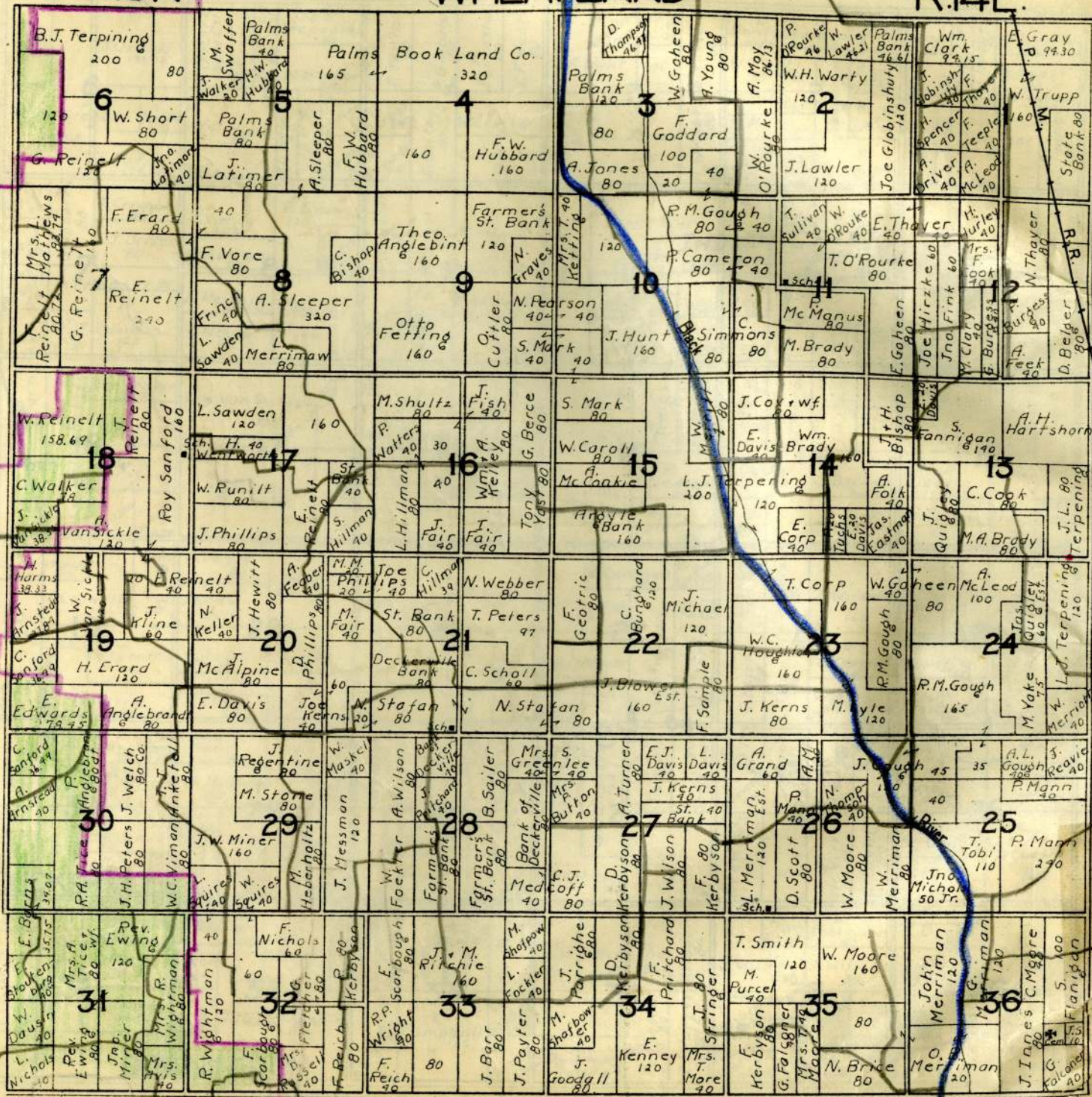
APPELEGATE,

MICHIGAN

T.13N.

WHEATLAND

R.14E.



MARION

SAN

WHE

A. R. SCHILL, Cashier
E. B. SHIPLEY, Asst. Cashier

MICHIGAN

Market

MICHIGAN

J. Maher 80	M. Maher 80 C. F. 80 Mrs. J. 40 Hussan 80 Dan 80 T. Mylen 80	F. Wright 80	F. Muller 100	J. Ford 80	L. Dugan 80	Geo. Hyde 40	J. Walsh 40	Chas. Albrecht 80	Strawick 60	J. C. Massman 80	G. W. Greening 119.47	Guy Markel 80	W. Wilson 80	W. Greening 40	W. Whiting 40	PORT SANILAC	Mrs. A. E. Harrison Est. 160	C. N. Oldfield 60	H. Oldfield 60
J. Brown 80	R. Maher 78.50 Mrs. J. Hussan 80 F. Hussens 80	J. Maher 80	W. Goodall 120	W. Albrecht 80	G. Hyde 140	T. Monzo 80	F. Albrecht 110	A. Bartles 40	W. Bartles 60	F. Bingle 40	R. Finlyson 40	R. Weidle 120	G. G. Burns 40	T. E. Heron 87	Wm. Wright 897	S. J. Burns 100	Wm. 103	J. Jarchow 71	M. Morzo 50
R. Maher 80	T. Maher 80	W. Goodall 120	W. Albrecht 80	V. Paradawski 120	L. Wood 100	H. Woods 70	W. T. Brown 80	F. Fierk 100	H. Behn 60	A. Dettman 80	J. Albrecht 60	F. Jarchow 120	S. J. Burns 100	Wm. 103	J. Jarchow 71	M. Morzo 50	Wm. Kuhl 80	M. Hendra 40	F. Baxler 40
G. Robshaw 40	J. Robshaw 40	M. Brown 80 Est.	G. Brown 80	W. Willis 140	W. T. Brown 40	M. Cuppen 100	C. Schatt 110	H. H. Behn 80	H. W. Schuch 80	W. J. Smith 80	J. Smith 80	F. Westphal 160	E. Bingle 80	L. Schultz 80	S. Budney 80	L. Falls 80	A. Nurenbery 80	R. Williams 50	F. Falls 40
Jno. Huygee 80	N. Goodall 100	J. Ferrier 60	J. Muttart 100.75	H. Willis 40	W. Henderson 80	S. Schultze 80	J. Branton 40	M. Pouge 80	C. Petra 80	F. Westphal 160	E. Bingle 80	L. Schultz 80	S. Budney 80	L. Falls 80	A. Nurenbery 80	R. Williams 50	F. Falls 40	Wm. Kuhl 80	M. Hendra 40
J. Maxwell 80 Est.	J. Andrews 80	J. Garboe 80	S. Henderson 140	W. Albrecht 40	D. Kirk 120	J. P. Henderson 80	J. Branton 80	H. Massman 80	C. Pickerman 40	H. Massman 40	H. Massman 40	Joe Empel 100	W. Smith 80	M. Falls 80	M. Hendra 40	F. Baxler 40	Mortzo 40	R. Sverwier 80	F. Baxler 40
G. Hagebrand 80	A. Hawkins 80	M. Heyman 80 Est.	J. Man 40	F. Kirk 40	W. Branton 80	H. Willis 80	L. Bingle 80	H. Harnack 40	A. R. Schell 80	C. Gath 40	A. Hoppeworth 80	F. Monzo 80	L. Gath 40	M. F. Hulversch 80	H. Hulversch 80	H. Beck 40	L. Gath 40	H. Hulversch 80	H. Beck 40
B. Dickinson 80	G. Hawkins 80	J. Cutler 40	W. Cutler Jr. 40	M. Nichol 40	E. Dickenson 40	P. Wideman 80 Est.	J. Cutler 40	A. R. Schell 110	E. G. 10	W. Erbe 40	J. Macofec 80	B. Erbe 40	L. Gath 40	M. F. Hulversch 80	H. Hulversch 80	H. Beck 40	L. Gath 40	H. Hulversch 80	H. Beck 40
J. Sudney 40	B. Band 40	E. Pearson 160	Guy Cutler 80	W. Cutler 80	F. C. Derby 39.7	Derby Lee 40	J. Lee 40	G. H. Wheatly 100	H. McVay 40	T. Wood 80	Suerwier 120	H. Massman 80	W. Lintz 40	A. Hoppeworth 108	H. Legatz 40	A. Hoppeworth 108	G. W. Cragford 40	W. Monzo 40	L. Debien 40
Roach 160	E. F. Cutler 160	W. Cutler 80	E. Cutler 80	Lee Doyle 40	Derby 40	Ed. 80	D. Riley 40	P. Mason 80	T. Wood 40	C. Massman 80	G. W. Cragford 40	W. Suerwier 120	W. Massman 40	L. Debien 40	L. Debien 40	L. Debien 40	G. W. Cragford 40	W. Monzo 40	L. Debien 40
N. Murry 40	J. Kirk 40	A. Long 80	W. Murray 80	J. E. Cain 80	S. Conklin 80	M. O. 40	McDonald 40	E. Derby 80	R. Hill 80	F. Hill 80	G. A. Surrooks 80	H. Patterson 40	J. Wood 40	C. Conkith 100	A. Suerwier 40	J. Lewis 80	M. Loren 40	L. Debien 40	L. Debien 40
E. Thrush 40	W. Murray 80	C. Reynolds 40	J. E. Cain 80	S. Conklin 80	M. O. 40	McDonald 40	E. Derby 80	R. Hill 80	F. Hill 80	G. A. Surrooks 80	H. Patterson 40	J. Wood 40	C. Conkith 100	A. Suerwier 40	J. Lewis 80	M. Loren 40	L. Debien 40	L. Debien 40	L. Debien 40

HURON

LAKE

JNO. P. NIGGEMAN, Jr., Pres.
M. J. CRUICKSHANK, Vice Pres.

A. R. SCHELL, Cashier
E. B. SHIPLEY, Ass't Cashier

State Bank of Lexington

CAPITAL AND SURPLUS \$35,000.00

DIRECTORS

A. E. SLEEPER

M. J. CRUICKSHANK

A. R. SCHELL

WALDO WIXSON

JNO. P. NIGGEMAN, JR.

LEXINGTON,

MICHIGAN

Cash and Carry Meat Market

WM. F. HILL, Proprietor

Phone No. 3

CROSWELL,

MICHIGAN

T.1 IN.

WASHINGTON

R.15E.



QUINN, Cashier

Methman Dr.

Michigan

WAS

VOR

JAMES McCAREN, President

NONA QUINN, Cashier

Port Sanilac Bank of Platts, Burgess & Co.

RESPONSIBILITIES \$200,000.00

W. J. McCAREN
W. C. VIVIAN
DAVID CROREY
EDWARD MEYER
H. A. RUTTLE
FRANK CROREY
JAS. J. MEIGS

J. E. BURGESS
CHAS. M. COOK
JAMES McCAREN
FRED RAYMOND
WM. BARNES
GUY D. PLATTS

Port Sanilac,

Michigan

T.9N.

WORTH

R.16&17E.



NOR