

# Here's List of Planned Improvements

James Decker Munson hospital's proposed construction and remodeling program is designed to cost \$870,300. Following is a list of the improvements to be included in this program:

I. Addition to south end of building.

A—2,700 sq. ft. basement.

B—Remodeling of present ground floor; 1, kitchen bulk storage; 2, new classrooms and interns quarters; 3, cart storage.

C—First floor (existing); 1, remodel south end of building for laboratory; 2, new lab areas; 3, connecting corridor from main building to annex; 4, new nurses' quarters.

D—Second floor (existing); 1, remodel nursing unit; 2, new nursing unit; 3, new connecting corridor; 4, unfinished area.

II. Addition to north end of main building and expansion of building to remodel physical therapy facilities.

A—Ground floor; 1, remodel physical therapy area; 2, new physical therapy area.

B—First floor; 1, remodel present nursing unit; 2, new construction with unfinished area.

C—Second floor; 1, new passage to clinic; 2, remodel area for premature center; 3, remodel area for formula room; 4, new nursing unit.

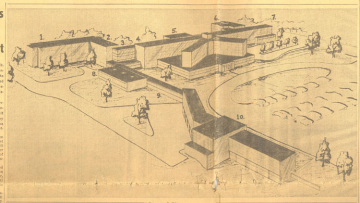
III. Remodeling of ground floor area vacated by moving of laundry to county building to expand X-ray and medical records.

A—Ground floor; 1, move laundry; 2, remodel and expand X-ray dept.; 3, remodel expanded records office; 4, move laboratory and remodel for a pharmacy and autopsy room; 5, new emergency suite.

IV. New west wing to provide an out-patient clinic.

A—Basement; 1, storage area and footings for future growth.

B—Ground floor; 1, out-patient clinic.



# General View

This sketch made by Harford Field and Associates, local architects for the program, shows how James Decker Munson hospital and the new Grand Traverse county medical care facility will look upon completion of the major construction and expansion program now approved. By number, the units shown here are:

1. Present Munson Nursing Annex.
  2. New Annex Facilities.
  3. New Connecting Passage.
  4. New South Wing Addition (Pathology Lab).
  5. New Out-Patient Clinic.
  6. Present Children's Clinic.
  7. New North Wing Addition (Physical Therapy Dept.).
  - \*8. New Laundry.
  - \*9. New Connecting Passage.
  - \*10. New Medical Care Facility.
- (\* These units to be built by Grand Traverse county.)