

The Knothole

MUNSON MEDICAL CENTER
TRAVERSE CITY, MICHIGAN

A publication dedicated to our sidewalk superintendents

Munson's addition takes shape

We've come a long way on our construction since our last "Knothole." Our addition now has a form, even if it is still of a skeletal nature.

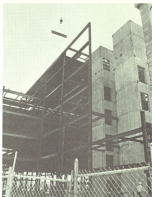
Currently, steel for connecting corridors between the old building and new addition is being put in place. Concrete is being poured for floors, and partitions are going up, giving a better idea of what the final floor plan will be.

Construction has reached the point where sometimes it has been unpleasant for patients and employees. When the old lobby section was being opened in order to build a corridor to the new building, the noise from the jackhammers was unbearable. Patients were supplied with ear plugs upon admission. However, it must be we are blessed with a special breed of uncomplaining patients because they just seemed to take it in stride and know it's all in the name of progress.

The next phase of building will involve putting up the precast concrete outer walls. Employees and visitors will miss the fun of watching the steel workers at work once they have finished their job and the building is closed in.

Finding your way through the maze of temporary construction partitions has become a real challenge. But, no one has been lost yet -- at least for very long.

In spite of the inconvenience and disturbance, everyone (except maybe the switchboard operators and information desk people) actually is enjoying the excitement of seeing this large structure take shape. Employees and medical staff know that in the end it will mean more than added space--it will mean a growth in services and health care which is so important to our area.



Agile and fearless steel workers bring oohs and aahs from all our "sidewalk superintendents" as they scramble around seemingly oblivious to the fact they are five stories up.

\$941,000 to go

Building info --

This summer will mean a concentrated effort by Development Council members to raise the remaining \$941,000 to achieve their \$2.575 million goal.

Plans are to contact local businesses during a special "Munson Week" August 15. The Council is working to achieve their goal by February, 1978, as stipulated by a \$250,000 grant from the Kresge Foundation. The Kresge Foundation is making the grant available only if local support for the project is demonstrated by achieving the goal within that time.

By raising this \$2.575 million, the Council will save patients more than \$400,000 every year, which is equivalent to \$5 per day per patient. The remainder of the \$11 million program will be financed through a bond issue and previously accumulated funds. The hospital governing board, preferring to maintain local authority, is not requesting any federal funds for the project.

CAT COMES TO THE NORTH

The addition of a CAT (computerized axial tomography) scanner to Munson's radiology department next spring will make available the latest achievement in radiological diagnostic equipment to northern Michigan. It makes possible the visualization of organs of the body and head not possible with conventional X-ray equipment with very low risk or discomfort to the patient.

The scanner will be used to detect brain and body disorders, such as tumors, cysts and hemorrhages. Because of the fact that the scans often allow patients to forego other expensive and risky surgical and diagnostic tests, such as angiograms and pneumoencephalograms, the overall cost to the patient is expected to be reduced.

Cost to Munson for leasing the equipment will be \$154,000 per year with operating costs estimated to be another \$250,000, depending on the number of scans done. Approximately \$15,000 will be spent to adapt a room for the equipment. The cost of equipment and construction is not included in the current expansion program.

*The 5-level addition is 130,000 square feet costing approximately \$9-1/2 million.

*Completion is set for summer 1978.

*Renovation of the present building is to begin following completion of the addition and will cost approximately \$1-1/2 million.

*The addition will include new intensive and coronary care units, emergency facilities, and admitting and administrative offices.

*Construction will mean 134 new beds, some replacing beds in the present building which are no longer up to code.

*Total number of beds will be 325 upon completion. Presently there are 259 beds.

*The addition will meet the projected needs of the community until 1985.

*A new 20-bed psychiatric unit will be included in the renovation plans.

*A 16-bed rehabilitation unit will make available a full-range of rehabilitation facilities for the first time in northern Michigan.

*The Neo-natal Intensive Care unit will double in size to 12 beds with a 4-bed step-down unit in addition.

INVESTMENT OPPORTUNITIES IN THE EXPANDED MUNSON MEDICAL CENTER

Some sample investments:

To Provide:	Your gift:
4 beds	\$1,000
Furniture for a room	\$1,000
A patient room	\$1,000
A coronary care room	\$10,000
An emergency waiting room	\$5,000
One patient examination room	\$5,000

All donations of \$100 or more will be listed on a plaque in the new lobby. Donations of \$5,000 or more will be recognized on a plaque in the unit for which the donation was made.

You may become a Donator by a cash or check or bill or more per year. Donations become an addition to the fund and will be recognized in the Munson's quarterly publication "The Munson."

For additional investment opportunities, please contact:

Frank Moss, Vice President
Munson Medical Center
3001 and Cadillac Streets
Traverse City, Michigan 49781
(517) 937-4100