

BUSINESS LAW.

Brief Digests of Recent Decisions in Courts of Last Resort.

HUSBAND AND WIFE—VOID NOTE.

A husband and wife made a note to obtain money for the husband's business. The wife had no interest in the business except as her husband's creditor, some of her separate property being used therein. The Supreme Court of Michigan lately held the note void as to the wife in the case of Littlefield vs. Dingwall.

INSURANCE—COLLECTION—ASSIGNMENT.

The owner of an insurance policy placed the same after loss in the hands of an attorney for collection, and instructed the latter to apply the proceeds of the policy in payment of his debt to a third party. The United States Circuit Court for the District of Iowa held, in the case of Aultman vs. McConnell, that this action of the owner of the policy did not amount to assignment of it to the third party in question.

SALE OF GOODS—MEASURE OF RECOVERY.

In a case where there was an agreement to purchase goods of a designated quality and to pay the price on delivery a portion of the goods were returned as being inferior to the quality agreed upon, the New York Court of Appeals held (Gardiner vs. Schwab) that the measure of the seller's recovery in an action against the buyer was not the difference between the market value of the goods and the contract price, but the contract price for all the goods delivered less the amount not actually complying with the contract in quality.

LEGALITY OF TRADE COMBINATIONS.

Judgment was given recently by Lord Chief Justice Coleridge in the Queen's Bench Division of the High Court of Justice (England) in an important case, in which the legality of trade combinations was somewhat considered. The action (Mogul Steamship Company, Limited, vs. McGregor et al.) was brought to recover damages from a number of steamship companies and others for an alleged conspiracy to boycott the plaintiffs, and to prevent, by means of bribery and intimidation, certain merchants and others in China from sending goods to Europe by the plaintiffs' steamships. The plaintiffs were a company of shipowners trading, or desirous of trading, between Australia and England, taking China by the way. They were also desirous of sharing in the carrying of the tea harvest of the late spring and early summer months, the places for loading which were at Shanghai, the mouth of the Yangtziang River and Hankow, a place about 600 miles up the stream of that great river. The defendants were a number of steamship companies and private persons trading mostly to China direct, and being desirous of getting this trade into their own hands, and of preventing the lowering of rates, they entered into what they called a conference, and offered a rebate of five per cent. to shippers by conference vessels, but such a rebate was not to be paid to shippers who shipped on any vessels but those belonging to the conference. The conference was commenced in 1884, and during that year the plaintiffs were admitted to share in its benefits. They were excluded in 1885, but they refused to acquiesce in the exclusion. It was for the loss which the plaintiffs say they suffered by the exclusion from and the action of the conference that the action was brought. The plaintiffs set up that the defendants entered into an unlawful combination against them, and bribed, coerced and induced shippers not to ship with them. Lord Coleridge gave judgment for the defendants. He said that the defendants were traders with enormous sums of money embarked in their adventures, and they had a right to push their lawful trade by every lawful means, and they had the right to endeavor by all lawful means to keep that trade in their own hands. They had also the right to offer inducements to customers to deal with them rather than with their rivals. They might, if they liked, offer inducements to customers to deal exclusively with them by giving them notice that only exclusive customers would have these exceptional advantages. It was a bargain which persons in the position of the defendants had a right to make, and those who were parties to the bargain must take it or leave it as a whole. Of coercion or bribery, in this he could see no evidence in the sense in which these were used legally. As to the contention that this combination was unlawful because it was a restraint of trade, it seemed to him that it was no more restraint of trade than for two village tailors to give five per cent. off their Christmas bills on condition of their customers dealing with them and them alone. Restraint of trade in the legal sense had nothing to do with the case in question.

Stinginess to be Avoided.

It is astonishing to think what little things will turn a customer against his grocer. For this reason the latter should be a careful student of human nature. Never allow your customers to think you are stingy. There is a wide difference between being stingy and economical, according to the customers' views, as is the case, although they are sometimes confounded. The grocer who is found to be what they call stingy will have poor success in the neighborhood, because in a man who has developed this trait they look for sharp dealing. Customers form their opinions of a grocer by the small things in their dealings. "Mamma" sends Johnny to her grocer for an empty box, but the grocer wants his boxes for kindling, or he may see fit to charge for them, and in either case tells Johnny in words that are characteristic of his humor. Johnny returns without the box, but with the grocer's words, which he delivers with an emphasis that is likely to pervert the meaning. "Stingy old grocer can keep his boxes," is the sentence likely to escape "mamma's" lips.

A good customer orders choice vegetables from your clerk for a special occasion. The order is filled, but contrary to your expectations they turn out to be tough, or otherwise undesirable, for the particular use to which she wishes to put them. Her first thought is that you wanted to work off your old stock on her, and that you were too stingy to concede the smallest favor. These are examples of little things that are hard to avoid. On the whole it is best to be liberal with your customers. Make them think you are, at least. Profits are very small and the grocer cannot afford to give much away, but in order to hold a good customer and know that you will have so much income from him every month it is better to show little favors once in a while, even if they cost fifteen or thirty cents.

GUMMINGS & YALE,

Importers and Manufacturers of
Crockery
Glassware
Fancy Goods
Bottles
Corks, Etc.

Write for prices, with illustrations.
Visiting merchants are requested to call and
look over our samples.

19 SO. IONIA STREET,
GRAND RAPIDS, - MICH.

WALES - GOODYEAR

CONNECTICUT

Rubbers.



Write for Fall Prices and Discounts.

G. R. MAYHEW,

86 Monroe Street,

GRAND RAPIDS.



Crown Prince!

THE FAVORITE BRAND
With Grocers.

Orders from Retail Trade Solicited.
Newaygo Roller Mills
NEWAYGO, MICH.

DETROIT SOAP CO.,

DETROIT, - - MICH.

Manufacturers of the following well-known brands of

SOAPS!

QUEEN ANNE, MOTTLED GERMAN, MICHIGAN, ROYAL BAR,
TRUE BLUE, SUPERIOR, CZAR, MASCOFFE,
MONDAY, PHENIX, VABASH, CAMEO,
AND OTHERS. For quotations address

W. G. HAWKINS, Salesman for Western Michigan,
Lock Box 173, - GRAND RAPIDS.

GEO. E. HOWES, S. A. HOWES, C. N. RAPP.

GEO. E. HOWES & CO.,

JOBBERS IN

Apples, Potatoes AND Onions.

SPECIALTIES:

Oranges, Lemons, Bananas.

3 Ionia St., GRAND RAPIDS, MICH.

WHO URGES YOU

TO KEEP

SAPOLIO?

THE PUBLIC!

By splendid and expensive advertising the manufacturers create a demand, and only ask the trade to keep the goods in stock so as to supply the orders sent to them. Without effort on the grocer's part the goods sell themselves, bring purchasers to the store, and help sell less known goods.

ANY JOBBER WILL BE GLAD TO FILL YOUR ORDERS.

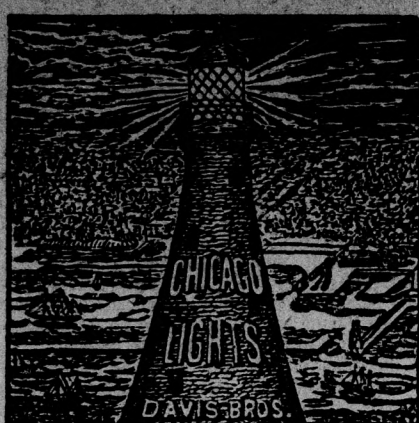
WM. SEARS & CO.

Cracker Manufacturers,

Agents for

AMBOY CHEESE.

87, 89 & 41 Kent Street, Grand Rapids, Michigan.



The Finest 5-ct. Cigar Manufactured.
LONG HAVANA FILLER.
THEY HAVE NO EQUAL.
A. S. DAVIS,
70 Canal St., Grand Rapids, Mich.



JULIUS HOUSEMAN, Pres.,
A. B. WATSON, Treas.,
S. F. ASPINWALL, Secy.
CASH CAPITAL, \$200,000.



Photo & Zinc Engraving
LEADS, SUGS, BRASS RULE
WOOD & METAL FURNITURE
BOX WORK
MAPLE, EQUEST GRAND RAPIDS MICH.

LEMON, HOOPS & PETERS,

Wholesale Grocers

AND

TEA

IMPORTERS.

GRAND RAPIDS, - MICH.

SWIFT'S

Choice Chicago Dressed Beef

—AND—

MUTTON

Can be found at all times in full supply and at popular prices at the branch houses in all the larger cities and is Retailed by all First-Class Butchers.

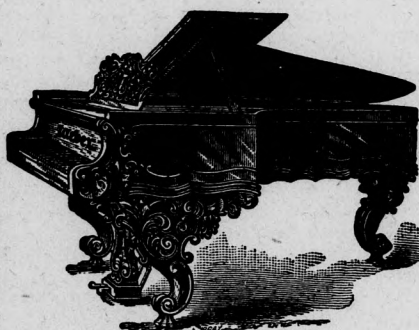
The trade of all marketmen and meat dealers is solicited. Our Wholesale Branch House, L. F. Swift & Co., located at Grand Rapids, always has on hand a full supply of our Beef, Mutton and Provisions, and the public may rest assured that in purchasing our meats from dealers they will always receive the best.

Swift and Company,

Union Stock Yards, - CHICAGO, ILL.

WEBER

Grand, Square and Upright Pianos.



The Weber Piano is recognized beyond controversy as the Standard for excellence in every particular. It is renowned for its sympathetic, pure and rich tone combined with greatest power. The most eminent artists and musicians, as well as the musical public and the press, unite in the verdict that

The Weber Stands Unrivaled.

Sheet music and musical merchandise. Everything in the musical line.

Weber Pianos, Fischer Pianos,
Smith Pianos, A. B. Chase Organs,
Estey Organs, Hillstrom Organs,

JULIUS A. J. FRIEDRICH,

(Successor to Friedrich Bros.)

30 and 32 Canal St., Grand Rapids, Mich.

HESTER & FOX,

Manufacturers' Agents for

SAW AND CRIST MILL MACHINERY,



Planers, Matchers, Moulders and all kinds of Wood-Working Machinery,
Saws, Belting and Oils.

And Dodge's Patent Wood Split Pulley. Large stock kept on hand. Send for Sample Pulley and become convinced of their superiority.

Write for Prices. 44, 46 and 48 So. Division St., GRAND RAPIDS, MICH.

RINDGE, BERTSCH & CO.,

MANUFACTURERS AND WHOLESALE DEALERS IN

BOOTS AND SHOES.

AGENTS FOR THE

BOSTON RUBBER SHOE CO.

14 and 16 Pearl Street, - Grand Rapids, Mich.

KAMPANE
GOODS

Cleveland Saxony Wool Plug Hats, Pearl Color.
Harrison " " " " Light Brown.

\$10.50 per doz.

Lapel Buttons

For Both Parties.

MEDALS, ETC. LOWEST PRICES.

Did you get our Fall Catalogue? If not,
send for one.

I. C. LEVI,

34 to 42 Canal Street.

I. M. CLARK & SON,

—THE—

LEADING TEA HOUSE

—IN—

MICHIGAN

P. STEKETEE & SONS,

JOBBERS IN

DRY GOODS,

AND NOTIONS,

88 Monroe St.,

AND 10, 12, 14, 16 AND 18 FOUNTAIN STREET,

GRAND RAPIDS, MICH.

Peerless Carpet Warps and Geese Feathers
American and Stark A Bags

{ A Specialty.

Groceries.

A Poor Soap Market.

"This is the poorest soap market I ever struck," remarked the representative of a soap manufacturer who has spent a year in this territory the other day. "No one manufacturer owns the trade and none seems to be able to maintain the lead for any length of time. Most of the merchants catch on to every snap that comes along—buy five or ten boxes every time they can get an extra box—but they seldom think of giving a second order unless they can get the same advantage again. The result of this is, that the grocer has not got any great proportion of customers who demand the same brand every time they buy soap, but rely largely on the judgment of the dealer. While this is bad for the manufacturer, it is a good thing for the retailer, as it enables him to cut down the sales of a brand on which there is little or no profit to nothing. I see nothing to prevent Western Michigan maintaining her present position as 'fighting ground' for many years to come."

"How about an advance in soap?" asked the reporter.

"Unless tallow takes a downward turn, which is not at all probable, the manufacturers will be compelled to advance their prices to avoid doing business at a loss."

"How about the soap trust? Bell is engineering?"

"It can't be worked. There are too many small men in the business. I understand the project is shelved for the present."

The Wool Market.

There is less excitement in the wool markets than a fortnight ago, though a steady volume of business is under way, with prices sustained at the advance. On the whole, the outlook for the coming season is considered much better than there was reason to look for at the beginning of August. Buyers of clothing are placing contracts with great caution, but yet somewhat more liberally than heretofore, and more or less machinery that has been idle is starting up. The supply of choice fine fleeces, moreover, appears to be less than was anticipated, so that the market for this description of wool is strong, particularly in the country.

Holders of wool at Boston express the utmost confidence in the steadiness of the market. While the manufacturers are operating rather less freely than during the latter part of August, their requirements for consumption are considerable. At the prices which prevailed before the advance they would, without question, buy liberally; at the present level they are inclined to operate with caution.

New Fish and Oyster House.

Elsewhere in this week's paper will be found an announcement to the effect that Bliven & Allyn will shortly engage in the wholesale fish and oyster business at 63 Pearl street. The manager of the business will be H. M. Bliven, who has had over twenty years experience in the oyster business, having handled the Big F. Farren brand in this market for many years and acted as manager for the oyster department of Putnam & Brooks for the past five years. Mr. Bliven informs THE TRADESMAN that he has secured the sole agency for Michigan for the above named brand and with admirable facilities for handling and long acquaintance with the trade, he proposes to do his share of the business naturally tributary to this market.

The firm will also carry a full line of ocean fish products, such as shell clams, soft and hard crabs, fresh mackerel, fresh cod, halibut, lobsters (shipped alive), bluefish, smelts, etc.

Now It's a Rice Trust.

An extensive combination has been formed of Chicago, St. Paul, Pittsburg and New York capitalists for the purpose of handling, milling and marketing rice, with the ultimate design of controlling the entire rice product of the South. Two million five hundred thousand dollars have been subscribed, and an immediate investment of \$200,000 has been made in New Orleans in elevators for the storage of rice, a mill for cleaning, and in facilities for handling it. The projectors of the company will operate this year's crop, and within the last three months several meetings of the shareholders have been held in this city. A. Leo Weil, of Pittsburg, the general counsel for the syndicate, is at the Richelieu. He has just returned from New Orleans. "This is a private business enterprise," said he, "in which are engaged a number of gentlemen who have avoided notoriety, and sought to conduct their business without unnecessary publicity. They own stock created by them for convenience in several companies."

The Grocery Market.

An advance in raw sugar has been followed by a corresponding movement in the refined article. Tea is steady. Rio coffees are firmer, in consequence of which the package manufacturers have advanced their prices 1/2c. Cloves have advanced 3/4c. during the past ten days, allspice 1/2c. and cassia the same. Rape seed is up 1/2c., hemp 3/4c. and celery seed 3/4c. Fresh beef is higher and firmer. Spot lard touched 10c. in Chicago on Monday. Soaps are firm in price and are bound to go higher. Dealers can make a mistake in purchasing at present prices. Kirk & Co. have placed the sale of their goods exclusively with Hawkins & Perry. New sauerkraut is already in market, commanding from \$4 to \$5.50 per barrel, according to quality.

Grocers wanting good cheese should order from I. B. Smith & Son, proprietors of the Wayland Cheese Factory, Wayland. Satisfaction guaranteed.

Telfer Spice Company,

SOLE MANUFACTURERS OF

ABSOLUTE SPICES,

—AND—

Absolute Baking Powder.



JOBBERS OF
Teas, Coffees and Grocers' Sundries,
46 Ottawa St., GRAND RAPIDS.

Otto Klein, Manager

Dealer in

Gloves and Mittens

—IN—

Buckskin, Dogskin, Nappa and Sheepskin.

IMPORTED AND DOMESTIC KID GLOVES A SPECIALTY.

—Full Line of—

MISSSES AND YOUTHS' GLOVES.

Mail Orders will receive Prompt Attention.
79 PEARL STREET,
Grand Rapids, Mich.

Millers, Attention

We are making a Middlings Purifier and Flour Dresser that will save you their cost at least three times each year.

They are guaranteed to do more work in less space (with less power and less waste) than any other machines of their class.

Send for descriptive catalogue with testimonials.

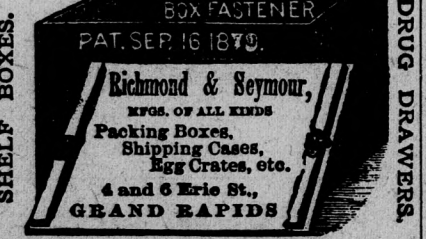
Martin's Middlings Purifier Co.,
GRAND RAPIDS, MICH.



MAGIC COFFEE ROASTER



Robt. S. West,
150 Long St.,
Cleveland, Ohio.



JUDG & CO.,
JOBBERS OF SADDLERY HARDWARE
And Full Line Summer Goods.
102 CANAL STREET.

W. H. I. P. S.
Full line. Cash prices this month.
GRAHAM ROYS, - Grand Rapids, Mich.

PLACE to secure a thorough and useful education both the GRAND RAPIDS (Mich.) BUSINESS COLLEGE, write for Catalogue. Address, C. G. SWENBERG.

WHOLESALE PRICE CURRENT.

The quotations given below are such as are ordinarily offered cash buyers, who pay promptly and buy in full packages:

BAKING POWDER.	RAISINS, LOOSE CALIFORNIA.	CLIMATE.	PROVISIONS.
100 cans, 8 doz. 15	Raisins, Loose California, 2 doz. 30	Climate, 3 doz. 30	The Grand Rapids Packing & Provision Co. quote as follows:
100 cans, 4 doz. 15	Raisins, Loose California, 4 doz. 60	Climate, 4 doz. 40	
100 cans, 2 doz. 15	Raisins, Loose California, 6 doz. 90	Climate, 6 doz. 60	
100 cans, 1 doz. 15	Raisins, Loose California, 8 doz. 120	Climate, 8 doz. 80	
100 cans, 1/2 doz. 15	Raisins, Loose California, 10 doz. 150	Climate, 10 doz. 100	
100 cans, 1/4 doz. 15	Raisins, Loose California, 12 doz. 180	Climate, 12 doz. 120	
100 cans, 1/8 doz. 15	Raisins, Loose California, 14 doz. 210	Climate, 14 doz. 140	
100 cans, 1/16 doz. 15	Raisins, Loose California, 16 doz. 240	Climate, 16 doz. 160	
100 cans, 1/32 doz. 15	Raisins, Loose California, 18 doz. 270	Climate, 18 doz. 180	
100 cans, 1/64 doz. 15	Raisins, Loose California, 20 doz. 300	Climate, 20 doz. 200	
100 cans, 1/128 doz. 15	Raisins, Loose California, 22 doz. 330	Climate, 22 doz. 220	
100 cans, 1/256 doz. 15	Raisins, Loose California, 24 doz. 360	Climate, 24 doz. 240	
100 cans, 1/512 doz. 15	Raisins, Loose California, 26 doz. 390	Climate, 26 doz. 260	
100 cans, 1/1024 doz. 15	Raisins, Loose California, 28 doz. 420	Climate, 28 doz. 280	
100 cans, 1/2048 doz. 15	Raisins, Loose California, 30 doz. 450	Climate, 30 doz. 300	
100 cans, 1/4096 doz. 15	Raisins, Loose California, 32 doz. 480	Climate, 32 doz. 320	
100 cans, 1/8192 doz. 15	Raisins, Loose California, 34 doz. 510	Climate, 34 doz. 340	
100 cans, 1/16384 doz. 15	Raisins, Loose California, 36 doz. 540	Climate, 36 doz. 360	
100 cans, 1/32768 doz. 15	Raisins, Loose California, 38 doz. 570	Climate, 38 doz. 380	
100 cans, 1/65536 doz. 15	Raisins, Loose California, 40 doz. 600	Climate, 40 doz. 400	
100 cans, 1/131072 doz. 15	Raisins, Loose California, 42 doz. 630	Climate, 42 doz. 420	
100 cans, 1/262144 doz. 15	Raisins, Loose California, 44 doz. 660	Climate, 44 doz. 440	
100 cans, 1/524288 doz. 15	Raisins, Loose California, 46 doz. 690	Climate, 46 doz. 460	
100 cans, 1/1048576 doz. 15	Raisins, Loose California, 48 doz. 720	Climate, 48 doz. 480	
100 cans, 1/2097152 doz. 15	Raisins, Loose California, 50 doz. 750	Climate, 50 doz. 500	
100 cans, 1/4194304 doz. 15	Raisins, Loose California, 52 doz. 780	Climate, 52 doz. 520	
100 cans, 1/8388608 doz. 15	Raisins, Loose California, 54 doz. 810	Climate, 54 doz. 540	
100 cans, 1/16777216 doz. 15	Raisins, Loose California, 56 doz. 840	Climate, 56 doz. 560	
100 cans, 1/33554432 doz. 15	Raisins, Loose California, 58 doz. 870	Climate, 58 doz. 580	
100 cans, 1/67108864 doz. 15	Raisins, Loose California, 60 doz. 900	Climate, 60 doz. 600	
100 cans, 1/134217728 doz. 15	Raisins, Loose California, 62 doz. 930	Climate, 62 doz. 620	
100 cans, 1/268435456 doz. 15	Raisins, Loose California, 64 doz. 960	Climate, 64 doz. 640	
100 cans, 1/536870912 doz. 15	Raisins, Loose California, 66 doz. 990	Climate, 66 doz. 660	
100 cans, 1/1073741824 doz. 15	Raisins, Loose California, 68 doz. 1020	Climate, 68 doz. 680	
100 cans, 1/2147483648 doz. 15	Raisins, Loose California, 70 doz. 1050	Climate, 70 doz. 700	
100 cans, 1/4294967296 doz. 15	Raisins, Loose California, 72 doz. 1080	Climate, 72 doz. 720	
100 cans, 1/8589934592 doz. 15	Raisins, Loose California, 74 doz. 1110	Climate, 74 doz. 740	
100 cans, 1/17179869184 doz. 15	Raisins, Loose California, 76 doz. 1140	Climate, 76 doz. 760	
100 cans, 1/34359738368 doz. 15	Raisins, Loose California, 78 doz. 1170	Climate, 78 doz. 780	
100 cans, 1/68719476736 doz. 15	Raisins, Loose California, 80 doz. 1200	Climate, 80 doz. 800	
100 cans, 1/137438953472 doz. 15	Raisins, Loose California, 82 doz. 1230	Climate, 82 doz. 820	
100 cans, 1/274877906944 doz. 15	Raisins, Loose California, 84 doz. 1260	Climate, 84 doz. 840	
100 cans, 1/549755813888 doz. 15	Raisins, Loose California, 86 doz. 1290	Climate, 86 doz. 860	
100 cans, 1/1099511627776 doz. 15	Raisins, Loose California, 88 doz. 1320	Climate, 88 doz. 880	
100 cans, 1/2199023255552 doz. 15	Raisins, Loose California, 90 doz. 1350	Climate, 90 doz. 900	
100 cans, 1/4398046511104 doz. 15	Raisins, Loose California, 92 doz. 1380	Climate, 92 doz. 920	
100 cans, 1/8796093022208 doz. 15	Raisins, Loose California, 94 doz. 1410	Climate, 94 doz. 940	
100 cans, 1/17592186044416 doz. 15	Raisins, Loose California, 96 doz. 1440	Climate, 96 doz. 960	
100 cans, 1/35184372088832 doz. 15	Raisins, Loose California, 98 doz. 1470	Climate, 98 doz. 980	
100 cans, 1/70368744177664 doz. 15	Raisins, Loose California, 100 doz. 1500	Climate, 100 doz. 1000	

MEATS.	TOBACCOES—FINE CUT.	TOBACCOES—SMOKING.	PRODUCE MARKET.
Meat, 100 lbs. 15	Tobaccoes, Fine Cut, 100 lbs. 15	Tobaccoes, Smoking, 100 lbs. 15	Apples—Buyers pay from 40c to 51c per bbl.
Meat, 50 lbs. 15	Tobaccoes, Fine Cut, 50 lbs. 15	Tobaccoes, Smoking, 50 lbs. 15	Beans—The new crop is coming in freely,
Meat, 25 lbs. 15	Tobaccoes, Fine Cut, 25 lbs. 15	Tobaccoes, Smoking, 25 lbs. 15	commanding \$12.25 per bu.
Meat, 10 lbs. 15	Tobaccoes, Fine Cut, 10 lbs. 15	Tobaccoes, Smoking, 10 lbs. 15	Butter—Good quality is scarce and high.
Meat, 5 lbs. 15	Tobaccoes, Fine Cut, 5 lbs. 15	Tobaccoes, Smoking, 5 lbs. 15	Dealers pay 15c and hold at 18c.
Meat, 2 lbs. 15	Tobaccoes, Fine Cut, 2 lbs. 15	Tobaccoes, Smoking, 2 lbs. 15	Cabbages—Home grown command \$2.00 per
Meat, 1 lb. 15	Tobaccoes, Fine Cut, 1 lb. 15	Tobaccoes, Smoking, 1 lb. 15	100.
Meat, 1/2 lb. 15	Tobaccoes, Fine Cut, 1/2 lb. 15	Tobaccoes, Smoking, 1/2 lb. 15	Celery—12c per doz.
Meat, 1/4 lb. 15	Tobaccoes, Fine Cut, 1/4 lb. 15	Tobaccoes, Smoking, 1/4 lb. 15	Cheese—Full cream readily commands 9c
Meat, 1/8 lb. 15	Tobaccoes, Fine Cut, 1/8 lb. 15	Tobaccoes, Smoking, 1/8 lb. 15	9c.
Meat, 1/16 lb. 15	Tobaccoes, Fine Cut, 1/16 lb. 15	Tobaccoes, Smoking, 1/16 lb. 15	Cider—10c per gal.
Meat, 1/32 lb. 15	Tobaccoes, Fine Cut, 1/32 lb. 15	Tobaccoes, Smoking, 1/32 lb. 15	Clover Seed—Mammoth or medium, \$4.50 per
Meat, 1/64 lb. 15	Tobaccoes, Fine Cut, 1/64 lb. 15	Tobaccoes, Smoking, 1/64 lb. 15	bu.
Meat, 1/128 lb. 15	Tobaccoes, Fine Cut, 1/128 lb. 15	Tobaccoes, Smoking, 1/128 lb. 15	Copperage—Pork barrels, \$1.25; produce barrels, 35c.
Meat, 1/256 lb. 15	Tobaccoes, Fine Cut, 1/256 lb. 15	Tobaccoes, Smoking, 1/256 lb. 15	Cucumbers—50c per bu.
Meat, 1/512 lb. 15	Tobaccoes, Fine Cut, 1/512 lb. 15	Tobaccoes, Smoking, 1/512 lb. 15	Dried Apples—Jobbers hold sun-dried at 7c
Meat, 1/1024 lb. 15	Tobaccoes, Fine Cut, 1/1024 lb. 15	Tobaccoes, Smoking, 1/1024 lb. 15	and evaporated at 9c.
Meat, 1/2048 lb. 15	Tobaccoes, Fine Cut, 1/2048 lb. 15	Tobaccoes, Smoking, 1/2048 lb. 15	Eggs—Jobbers now pay 13c and sell at 14c.
Meat, 1/4096 lb. 15	Tobaccoes, Fine Cut, 1/4096 lb. 15	Tobaccoes, Smoking, 1/4096 lb. 15	Grapes—Concord, 4c per lb.
Meat, 1/8192 lb. 15	Tobaccoes, Fine Cut, 1/8192 lb. 15	Tobaccoes, Smoking, 1/8192 lb. 15	Honey—Scarc, not equal to the demand. All
Meat, 1/16384 lb. 15	Tobaccoes, Fine Cut, 1/16384 lb. 15	Tobaccoes, Smoking, 1/16384 lb. 15	choice offerings are grabbed up quick at 17c
Meat, 1/32768 lb. 15	Tobaccoes, Fine Cut, 1/32768 lb. 15	Tobaccoes, Smoking, 1/32768 lb. 15	per lb.
Meat, 1/65536 lb. 15	Tobaccoes, Fine Cut, 1/65536 lb. 15	Tobaccoes, Smoking, 1/65536 lb. 15	Hay—Baled is in small demand at \$15 for No. 1
Meat, 1/131072 lb. 15	Tobaccoes, Fine Cut, 1/131072 lb. 15	Tobaccoes, Smoking, 1/131072 lb. 15	and \$14 for No. 2.
Meat, 1/262144 lb. 15	Tobaccoes, Fine Cut, 1/262144 lb. 15	Tobaccoes, Smoking, 1/262144 lb. 15	Muskellons—Osage, 10c per doz. Nutmegs,
Meat, 1/524288 lb. 15	Tobaccoes, Fine Cut, 1/524288 lb. 15	Tobaccoes, Smoking, 1/524288 lb. 15	25c per doz.
Meat, 1/1048576 lb. 15	Tobaccoes, Fine Cut, 1/1048576 lb. 15	Tobaccoes, Smoking, 1/1048576 lb. 15	Onions—Home grown dry stock command
Meat, 1/2097152 lb. 15	Tobaccoes, Fine Cut, 1/2097152 lb. 15	Tobaccoes, Smoking, 1/2097152 lb. 15	40c per bu.
Meat, 1/4194304 lb. 15	Tobaccoes, Fine Cut, 1/4194304 lb. 15	Tobaccoes, Smoking, 1/4194304 lb. 15	Peaches—Barnards command 75c per bu. and
Meat, 1/8388608 lb. 15	Tobaccoes, Fine Cut, 1/8388608 lb. 15	Tobaccoes, Smoking, 1/8388608 lb. 15	Crawfords \$1.25 per bu.
Meat, 1/16777216 lb. 15	Tobaccoes, Fine Cut, 1/16777216 lb. 15	Tobaccoes, Smoking, 1/16777216 lb. 15	Pears—Bartlett's or Flemish Beauties, \$1.75
Meat, 1/33554432 lb. 15	Tobaccoes, Fine Cut, 1/33554432 lb. 15	Tobaccoes, Smoking, 1/33554432 lb. 15	per bu.
Meat, 1/67108864 lb. 15	Tobaccoes, Fine Cut, 1/67108864 lb. 15	Tobaccoes, Smoking, 1/67108864 lb. 15	Plums—Damsons, \$2.50 per bu.
Meat, 1/134217728 lb. 15	Tobaccoes, Fine Cut, 1/134217728 lb. 15	Tobaccoes, Smoking, 1/134217728 lb. 15	Pot Corn—2 1/2c per bu.
Meat, 1/268435456 lb. 15	Tobaccoes, Fine Cut, 1/268435456 lb. 15	Tobaccoes, Smoking, 1/268435456 lb. 15	Potatoes—Jobbing generally at 35c for
Meat, 1/536870912 lb. 15	Tobaccoes, Fine Cut, 1/536870912 lb. 15	Tobaccoes, Smoking, 1/536870912 lb. 15	home grown.
Meat, 1/1073741824 lb. 15	Tobaccoes, Fine Cut, 1/1073741824 lb. 15	Tobaccoes, Smoking, 1/1073741824 lb. 15	Squash—Hubbard, 1 1/2c lb.
Meat, 1/2147483648 lb. 15	Tobaccoes, Fine Cut, 1/2147483648 lb. 15	Tobaccoes, Smoking, 1/2147483648 lb. 15	Sweet Potatoes—Baltimore, \$3.50 per bbl.
Meat, 1/4294967296 lb. 15	Tobaccoes, Fine Cut, 1/4294967296 lb. 15	Tobaccoes, Smoking, 1/4294967296 lb. 15	Jerseys, \$4.50 per bu.
Meat, 1/8589934592 lb. 15	Tobaccoes, Fine Cut, 1/8589934592 lb. 15	Tobaccoes, Smoking, 1/8589934592 lb. 15	Tomatoes—40c per bu.
Meat, 1/17179869184 lb. 15	Tobaccoes, Fine Cut, 1/17179869184 lb. 15	Tobaccoes, Smoking, 1/17179869184 lb. 15	Turnips—25c per bu.
Meat, 1/34359738368 lb. 15	Tobaccoes, Fine Cut, 1/34359738368 lb. 15	Tobaccoes, Smoking, 1/34359738368 lb. 15	Watermelons—Indiana, 10c per piece.
Meat, 1/68719476736 lb. 15	Tobaccoes, Fine Cut, 1/68719476736 lb. 15	Tobaccoes, Smoking, 1/68719476736 lb. 15	GRAINS AND MILLING PRODUCTS.
Meat, 1/137438953472 lb. 15	Tobaccoes, Fine Cut, 1/137438953472 lb. 15	Tobaccoes, Smoking, 1/137438953472 lb. 15	Wheat—City millers pay 8c for both white and
Meat, 1/274877906944 lb. 15	Tobaccoes, Fine Cut, 1/274877906944 lb. 15	Tobaccoes, Smoking, 1/274877906944 lb. 15	red.
Meat, 1/549755813888 lb. 15	Tobaccoes, Fine Cut, 1/549755813888 lb. 15	Tobaccoes, Smoking, 1/549755813888 lb. 15	Wheat—Jobbing generally at 8c in 100 bu.
Meat, 1/1099511627776 lb. 15	Tobaccoes, Fine Cut, 1/1099511627776 lb. 15	Tobaccoes, Smoking, 1/1099511627776 lb. 15	lots and 8c in car lots.
Meat, 1/2199023255552 lb. 15	Tobaccoes, Fine Cut, 1/2199023255552 lb. 15	Tobaccoes, Smoking, 1/2199023255552 lb. 15	Oats—White, 4c in small lots and 40c in
Meat, 1/4398046511104 lb. 15	Tobaccoes, Fine Cut, 1/4398046511104 lb. 15	Tobaccoes, Smoking, 1/4398046511104 lb. 15	car lots.
Meat, 1/8796093022208 lb. 15	Tobaccoes, Fine Cut, 1/8796093022208 lb. 15	Tobaccoes, Smoking, 1/8796093022208 lb. 15	Rye—50c per bu.
Meat, 1/17592186044416 lb. 15	Tobaccoes, Fine Cut, 1/17592186044416 lb. 15	Tobaccoes, Smoking, 1/17592186044416 lb. 15	Barley—Brewers pay \$1.30 per cwt.
Meat, 1/35184372088832 lb. 15	Tobaccoes, Fine Cut, 1/35184372088832 lb. 15	Tobaccoes, Smoking, 1/35184372088832 lb. 15	Flour—Higher. Patent \$5.50 per bbl in sacks
Meat, 1/70368744177664 lb. 15	Tobaccoes, Fine Cut, 1/70368744177664 lb. 15	Tobaccoes, Smoking, 1/70368744177664 lb. 15	and \$5.00 in wood. Straight, \$4.80 per bbl. in
Meat, 1/140737488355328 lb. 15	Tobaccoes, Fine Cut, 1/140737488355328 lb. 15	Tobaccoes, Smoking, 1/140737488355328 lb. 15	sacks and \$5.00 in wood.
Meat, 1/281474976710656 lb. 15	Tobaccoes, Fine Cut, 1/281474976710656 lb. 15	Tobaccoes, Smoking, 1/281474976710656 lb. 15	Meal—Bolted, \$2.90 per bbl. Bran, \$3.50 per bbl.
Meat, 1/562949953421312 lb. 15	Tobaccoes, Fine Cut, 1/562949953421312 lb. 15	Tobaccoes, Smoking, 1/562949953421312 lb. 15	Mill Feed—Screenings, \$1.00 per ton. Bran, \$1.50
Meat, 1/1125899906842624 lb. 15	Tobaccoes, Fine Cut, 1/1125899906842624 lb. 15	Tobaccoes, Smoking, 1/1125899906842624 lb. 15	per ton. Ship, \$1

The Michigan Tradesman

THE PHARISEE OF PIGEON CREEK.

(CONTINUED FROM FIRST PAGE)
Error had set her mark upon that wrongdoer.

The mind of the faithful servant of a re-buked Heaven was often troubled. To whistle on Sunday; to read as a cormorant eats, and of worldly history, when the Advocates and Exemplars, and Expositors offered mines of precious truth; to be infamously homesick; to say he was glad so feebly that the lie shivered upon his weak lips—it was all that could be expected of the progeny of Satan! Cyrus began to believe the women-folk; the viper was already stinging him!

With a view of sounding the basest depths of this child's ingratitude, it was with some diplomacy wormed from him that, if Squire Woodman gave him up, he would go. There would be no tarrying under difficulties, as your vagrom dog clings to the hope of an asylum in a house where he has attracted enough attention to be kicked.

This state of mind, mildly as the boy had depicted it, made a decided commotion in the household. The daughter who had worked up the case was forced to substantiate her statements. In a horror, fortified with a few firm whippings, the good Cyrus visited the relatives who had passed the wretched youth upon him, and announced that the boy must be returned. The relatives, now knowing more of Cyrus than they had once known, accepted his ultimatum in good spirit, and the die was cast.

The boy was stripping sorghum in a field near by. He was called to the house and asked if he still harbored the base discontents which neither mildewed pieplant pie nor blacksnake horsewhippings had seemed to eradicate.

In the dawning light of faith in prayer, the boy, with a thousand saving clauses, admitted once more that he might possibly be willing to abide elsewhere.

There came an I-can't-sparkle in Cyrus Worthy's eye, which nearly brought the boy to beg to stay on any terms, but the demonstration ended in a hymn, and the boy was sent to the garret to pack his little box. He came below again. His good cousin was at the gate. The bad child walked down the pathway, and the good family honored him with a scornful glance. Their minds traveled to John Milton's picture—

As when a prowling wolf,
Whom hunger drives to seek new haunt for prey,
Watching where shepherds pen their flocks at eve,
In hurdled cotes, amid the fields secure,
Leaps o'er the fence with ease into the fold
So clomb this first grand thief into God's fold.
So had this prowler also clomb into God's fold. So clomb he now into the wagon of his own sinful generation, and the malediction of the chosen house went with him and all his.

But the boy took naught for granted until he was a mile out of that hamlet. Then, as the four corners were sinking on the horizon, his heart leaped forth in thoughts of indescribable joy.

The God of Orphans had harkened unto his supplication.

Alas! how was it to go with that blessed home whence he had been ejected all too late. The harm was done. The heresy had hatched along with the hornets. The wrath of the God of the Ishmaelites, of the Egyptians, of Judah's pestilence and of Herod's massacre was gathering over Woodman's Corners. Such is the sublime justice of a jealous God. Such is the reaping where the sowing has been the seed of heresy. Let us briefly speak of the storm:

A fire breaking out in the premises, burned the mansion to the ground. In the difficulties and afflictions arising from this disaster, the goodwife died and made no sign. This, being interpreted, led to a somewhat unexpected second marriage within nine or ten months, whereby the saintly man took for a helpmeet a vixen of resolute mould. The church would have none of it, and put out the shining light forthwith. Cyrus was churched. The people of the township affirmed the finding, and took away his dignities and their library. The second wife was in no way fitted to hold a position so exalted in a household previously so distinguished. The solemn visage, the unctuous dogma, ay, the previously never failing psalm of Beebe's landlord, refused to do their perfect work; and the wife!—instead of pining into the green and yellow melancholy of complete subjugation, she henpecked Cyrus Worthy Woodman with precision and effect!

A son went to war, to escape in battle the turmoil that was rending his revered father's household.

The daughter was driven out of the house, as Hagar had been driven into Beersheba. The Worthy Cyrus was ingloriously forced to allow her to go at work flagbottoming chairs in a neighboring town.

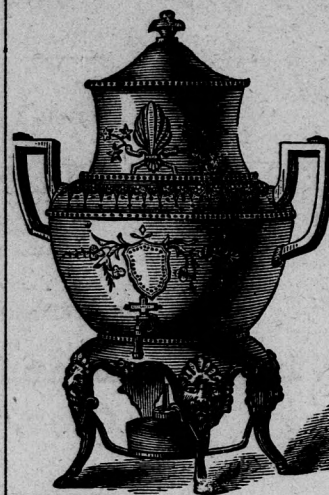
At last it pleased the Power that had reached out for Pharaoh and Herod to thrust the father out of his own homestead. The great disciplinarian fled before an angry woman, and sued for a divorce.

Then all those perverse elements of men that persecute the righteous banded together to espouse the cause of the grass-widow. And Beebe's named all the rest! At the end of divers ingenious litigations of fabulous cost, there remained but one course for the illustrious subject of this truthful chronicle. That course lay due west.

He who had been magistrate, deacon, township librarian, trustee, farmer, prominent citizen, and proprietor of orphans, set out one fine morning for Northern Illinois. His worldly possessions had dwindled to a horse and divorce.

I have heard that the horse died at Valparaiso.

JOHN MCGOVERN.



RETAIL GROCERS
Who wish to serve their Customers with **GOOD COFFEE** would do well to avoid Brands that require the support of Gift Schemes, Prize Promises or Lottery Inducements.

DILWORTH'S COFFEE,

Which Holds Trade on Account of Superior Merit Alone.
Unequaled Quality. Improved Roasting Process. Patent Preservative Packages.

For Sale by all Jobbers at Grand Rapids, Detroit, Saginaw, East Saginaw and Bay City.

DILWORTH BROTHERS, Proprietors, PITTSBURGH, Penn.



E. G. STUDLEY,
Wholesale Dealer in

RUBBER BOOTS AND SHOES

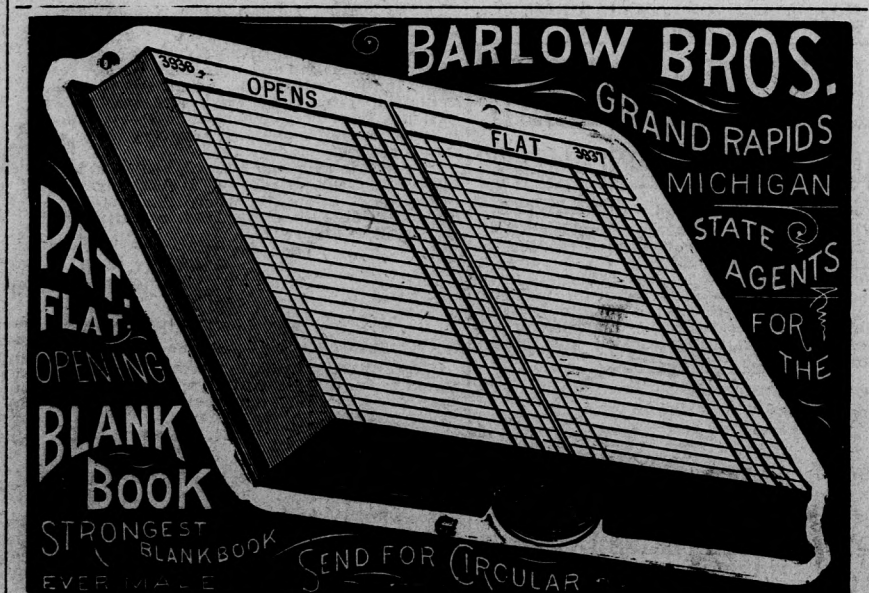
Manufactured by

Candee Rubber Co.
Send for Large Illustrated Catalogue and Price List.
Telephone 434.

No. 4 Monroe Street, GRAND RAPIDS, MICH.

CURTISS & CO.,
Successors to CURTISS & DUNTON.

PAPER WAREHOUSE,
Houseman Building, Cor. Pearl & Ottawa Sts.,
GRAND RAPIDS, MICH.



THEO. B. GOOSSEN,
WHOLESALE
PRODUCE COMMISSION MERCHANT

Dealer in STOVEWOOD and Jobber of FOREIGN, TROPICAL and CALIFORNIA FRUITS.

33 Ottawa Street, GRAND RAPIDS, MICH.
Orders for Potatoes, Cabbage and Apples in Car Lots solicited. Consignments solicited. Sole Agent for MOLINE CHEESE.

E. P. CLARK & SON,
WHOLESALE
COMMISSION MERCHANTS,
AND DEALERS IN

Seeds, Produce, Vegetables, Fruit, Butter, Eggs, Cheese, Etc., Etc.,
CONSIGNMENTS SOLICITED.

Big Rapids, Michigan.

ALFRED J. BROWN,
—JOBBER IN—
FOREIGN,
TROPICAL
AND
CALIFORNIA

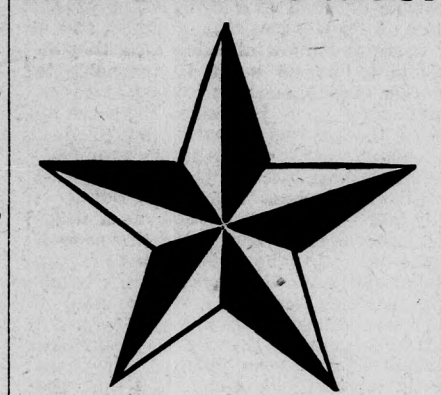


FRUITS.

Bananas, Our Specialty.

16 and 18 No. Division St.,
GRAND RAPIDS, - MICH.

WM. L. ELLIS & CO.



BRAND
Baltimore Oysters

Broker in CANNED GOODS.
Salt and Sea Fish.

B. F. EMERY, - Manager,
20 Lyon St., GRAND RAPIDS, MICH.

EDWIN FALLAS,
PROPRIETOR OF
VALLEY CITY COLD STORAGE,
JOBBER OF

Oranges, Lemons, Bananas, Butter, Eggs and Egg Crates.

No. 1 egg crates, 37c. No. 2 egg crates, 30c. No. 1 fillers, 13c. No. 2 fillers, 10c.

I have facilities for handling each line above named that are unsurpassed.

I aim to handle the best that can be obtained. Mail orders filled promptly at lowest market price. A liberal discount on Egg Crates and fillers in large lots.

SALESROOM, - No. 9 Ionia St., Grand Rapids.

WANTED!

POTATOES, APPLES, DRIED FRUIT, BEANS

and all kinds of Produce.

If you have any of the above goods to ship, or anything in the Produce line, let us hear from you. Liberal cash advances made when desired.

EARL BROS.,
COMMISSION MERCHANTS
157 South Water St., CHICAGO.

Reference: FIRST NATIONAL BANK, Chicago. MICHIGAN TRADERMAN, Grand Rapids.

POTATOES.

We give prompt personal attention to the sale of POTATOES, APPLES, BEANS and ONIONS in car lots. We offer best facilities and watchful attention. Consignments respectfully solicited. Liberal cash advances on Car Lots when desired.

Wm. H. Thompson & Co.,
COMMISSION MERCHANTS,
166 South Water St., CHICAGO.

Reference: FELSETHAL, GROSS & MILLER, Bankers, Chicago.

STANTON, SAMPSON & CO.,
Manufacturers and Jobbers of

Men's Furnishing Goods.

Sole Manufacturers of the "Peninsular" Brand Pants, Shirts and Overalls.

State agents for Celluloid Collars and Cuffs, 120 and 122 Jefferson, Ave.,
DETROIT, - MICHIGAN.
GEO. P. OWEN, Grand Rapids; Western Michigan Salesman.

H. LEONARD & SONS,

WHOLESALE
Crockery, House Furnishing Goods, Holiday Goods.
GRAND RAPIDS, MICH.



"IONA." Gold Band Ironstone China.
A new and pleasing shape, decorated with real Gold Band and Sprig, as shown. Positively the Finest Quality ENGLISH WARE at low and popular prices. It is having an unprecedented run, exceeding even the Luster Band, as it is a brighter and more attractive style. Will not wear off or wash off with ordinary use, as the gold is thoroughly burnt in.
Our small assorted crates of this pattern, amounting to \$96.56, is shown on page 145 of our Illustrated Catalogue, which will be sent on request. Try a package. YOUR LADY CUSTOMERS WILL BE DELIGHTED.

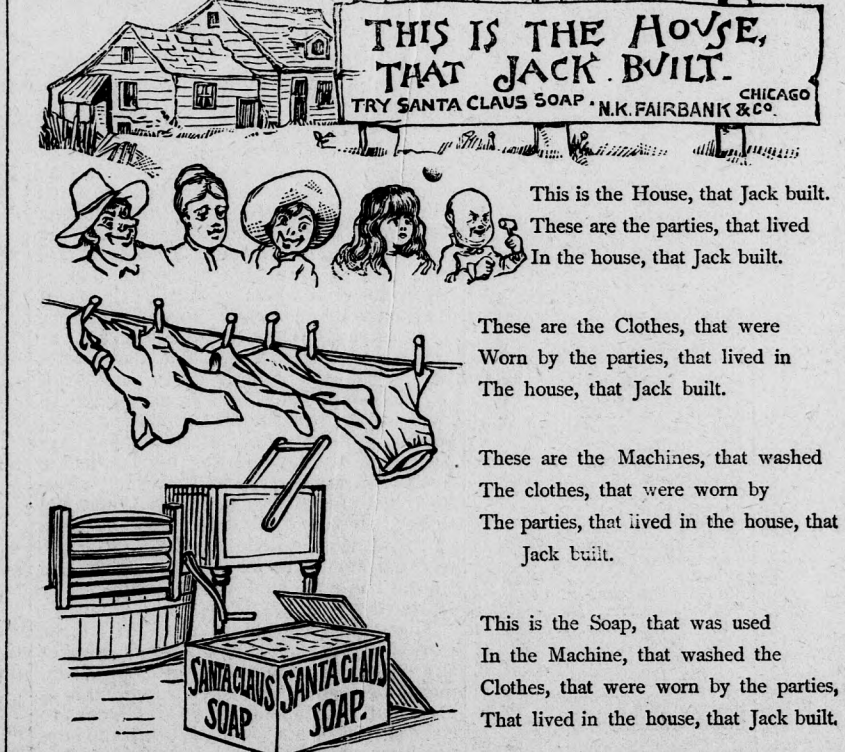
REDUCTION IN FRUIT JARS.

NOW IS THE TIME TO ORDER

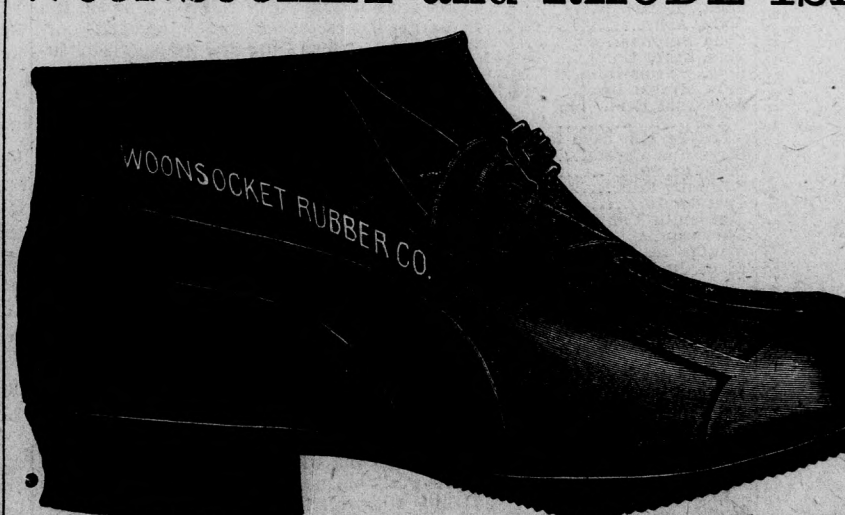
MASON'S PORCELAIN TOP,
OF THE "LIGHTNING" GLASS COVER,

OR, THE GLOBE FRUIT JARS.
Never so low as to-day. Prices subject to change.

H. LEONARD & SONS.



Woonsocket and RHODE ISLAND RUBBERS



OUR FALL LINE OF
School Supplies
AND
Fine Stationery
—IS NOW COMPLETE.—
OUR TRAVELERS
J. L. KYMER (of our firm),
GEO. H. RAYNOR
and GILBERT J. HAAN
Will soon call upon the trade with a complete line of samples.
EATON, LYON & CO.,
20 and 22 Monroe St., Grand Rapids.

Woonsocket and RHODE ISLAND RUBBERS

Write for Fall Prices and Discounts

G. R. MAYHEW,
Grand Rapids, Mich.

Boston and Lawrence
Felt and Knit Boots.

NEAL'S CARRIAGE PAINTS

Re-paint your old buggy and make it look like new for LESS THAN ONE DOLLAR. Eight beautiful shades. Prepared ready for use. They dry hard in a few hours, and have a beautiful and durable gloss. They are the ORIGINAL, all others are IMITATIONS. More of our brand sold than all the other brands on the market.

GRANITE FLOOR PAINTS

The Great Invention. Six Handsome Shades. Ready for use. DRY HARD OVER NIGHT, and are very durable. Give them a trial, and you will be convinced that it does not pay to mix the paint yourself.

ACME WHITE LEAD & COLOR WORKS
DETROIT,
Dry Color Makers, Paint and Varnish Manufacturers.
CUT THIS ADVERTISEMENT OUT AND TAKE IT TO YOUR DEALER, IT WILL SECURE YOU A PRIZE.