



# THE NEWSLETTER

March 2000

of the **Golf Course Superintendents Association of New England, Inc.**

Sponsors and administrators of the Troll-Dickinson Scholarship Fund – Awarded yearly to deserving Turf Management Students.

## Bert Frederick's retirement will involve turf, but definitely not the 'out to pasture' variety

Like many of us, Bert Frederick doesn't like to see a day when he hasn't been productive.

"It's in my makeup, in my blood," Frederick mused recently while looking back on his 38-year career at the Vesper Country Club that ended recently when he accepted a retirement and compensation program he hadn't sought. "The thought of 'sleeping in' every morning doesn't cut for me. I have to be active. I'm not good at doing nothing. Never was."

Frederick, a solid citizen in the ranks of the Golf Course Superintendents Association of New England, is 58 years old, but right in step with the streamlined version of conditioning fairways, greens, and other country club grounds. However, he understands that dropping out of sight as a day-to-day contributor to the Vesper grooming schedule is a sign of the times.

"The break with Vesper turns out to be one without bitterness," Bert said.

*"I guess you can call me retired and one of the 'old coots'. But in reality, I feel rejuvenated. I still have a lot to offer golf."*

**Bert Frederick**

"The people there want me to help the new superintendent they hire, like on a consultant basis. They've made it possible for me to live a lifestyle close to the one I've enjoyed for so long. They threw a retirement party for me and gave Joyce and me a ski trip to Steamboat Springs. That was nice."

Joyce, of course, is Bert's multi-talented wife. She is a registered nurse who has more than just a flair for painting. Her watercolors and other works have hung in art galleries, she has a studio in their Dunstable home, and she remains a rock in the Bert Frederick admiration society.

So, reporting to the birds and land of birdies at 5:30 a.m. seven days a week isn't all that hard to forget when Bert stops to smell the roses around him away from the golf course.

"Yeah, I'm going to miss the place I've called my second home (Vesper) for almost 40 years, but there are other places to

see and other things to do," Bert offered. "There are opportunities out there and I'll pick up on them this spring. In fact, I just might like slowing down."

Frederick already has an agenda, since he's also a virtuoso when it comes to other wings of golf's spreading house. As a prodigy of the late, great Manny Francis, Bert is in demand as a course designer and maintenance manager. In other words, he wasn't on the outside looking in when Francis designed and aided in the conditioning process of some 25 New England golf courses.

This month Bert will be homing in on the development of two layouts: the Campbell Scottish Highland course in Salem, N.H. and the Kimball Farms Golf Club in Westford, Mass. Actually, it's old stuff to Frederick. He's been in the business of course design and maintenance consulting for the last 30 years. His first project, the Hickory Hill Club in Methuen, Mass. was completed in conjunction with the master, Francis.

The Frederick-Francis connection pretty well sums up Bert's professional life when you consider that for the past 70 years the Vesper Country Club has had only two superintendents, Manny and Bert.

Frederick got a jump on his career when, as a 14 year-old kid, he worked for duper-super Bobby Mucciarone at the Merrimack Country Club. A few years later Bert zeroed in on a future as a superintendent when Dave Clement and he hooked on with Francis at Vesper.

The next year, 1960, Bert marched through

*continued on page 2*

### INSIDE . . .

	Page
Calendar of Events . . . . .	2
The Super Speaks Out . . . . .	3
GCSAA News . . . . .	4
Business News . . . . .	4
GCSANE Committees . . . . .	4
UMass Snow Mold Study . . . . .	5
Friend of the Association Profile . . . . .	5
Divot Drift . . . . .	6
Host Superintendent Profile . . . . .	8





**PRESIDENT**  
Robert Ruszala  
69 Gelinus Drive, Chicopee, MA 01020  
413-256-8654 Fax 413-256-8654  
Hickory Ridge Country Club

**VICE PRESIDENT**  
James R. Fitzroy, CGCS  
357 W. Squantum Street, North Quincy, MA 02171  
617-328-1776 Fax 617-328-9479  
Presidents Golf Course

**SECRETARY**  
Michael V. Iacono, CGCS  
42 Newton Street, Weston, MA 02493  
781-899-7913 Fax 781-647-0602  
Pine Brook Country Club

**TREASURER**  
Daniel P. Higgins, CGCS  
68 Hutchinson Road, Winchester, MA 01890  
781-729-3809 Fax 781-721-1561  
Winchester Country Club

**TRUSTEE**  
David Comee  
65 Marquette Road, Gardner, MA 01440  
978-297-1223 Fax 978-297-0911  
The Winchendon Golf Club

**TRUSTEE**  
Wayne F. LaCroix, CGCS  
5 Radcliff Drive, Andover, MA 01810  
978-475-6638 Fax 978-475-9488  
Andover Country Club

**TRUSTEE**  
Patrick S. Kriksceonaitis  
4 Lakemans Lane, Ipswich, MA 01938  
978-256-4600 Fax 978-526-8333  
Essex County Club

**FINANCE CHAIRMAN**  
Arthur Silva, CGCS  
35 Pennacook Road, Tewksbury, MA 01876  
781-484-5440 Fax 781-484-6613  
Belmont Country Club

**GOLF CHAIRMAN**  
Michael J. Hermanson  
P. O. Box 145, Gardner, MA 01440  
978-632-2713 Fax 978-632-2713  
Gardner Municipal Golf Course

**EDUCATION CHAIRMAN**  
Ronald P. Dobosz, Jr.  
1137 Park Street, Stoughton, MA 02072  
781-341-8564 Fax 781-341-8564, \*51  
Cedar Hill Golf Course

**NEWSLETTER CHAIRMAN**  
Russell E. Heller  
59 Park Street, Melrose, MA 02176  
978-256-5664 Fax 978-256-5664  
Chelmsford Country Club

**PAST PRESIDENT**  
Kevin F. Osgood  
14 Inman Lane, Foxborough, MA 02035  
617-630-1950 Fax 617-969-8756  
Newton Commonwealth Golf Course



**GCSANE Headquarters**  
175 Highland Avenue, Needham, MA 02494-3034  
(781) 453-8668 Fax (508) 758-6474

Newsletter Editor . . . . . **Russell Heller**  
Contributing Editor . . . . . **Gerry Finn**  
Business Manager . . . . . **Daniel P. Higgins, CGCS**

Information contained in this publication may be used freely, in whole or in part, without special permission as long as the true context is maintained. We would appreciate a credit line.

*continued from page 1*

the winter turf program at Stockbridge under the guidance of three distinguished teachers, Jeff Cornish, Joe Troll, and Lawrence Dickinson. Therefore, he was dripping golf course maintenance blueblood when he returned to Vesper as Francis' assistant.

It was in that capacity that Bert got into design and advisement in a serious vein. "That year (1963) I helped Manny design and build Fort Devens Golf Course," he told. "That really was a thrill, an experience I'll always remember. We used combat engineers to get the heavy work done. That really got me interested in course design and construction."

Designing and building in Francis' day was really a labor and learning of love for Bert. He and Manny would tend to the regular grooming program at Vesper from break of day to late afternoon, then take off for the course under construction where they worked until dark.

Francis, of course, is the man credited with discovering the Vesper strain of bentgrass. Manny named it after the club and its popularity zoomed to the point where over 80 New England courses are decked out in Vesper Velvet. That and his all-around command of the profession became Manny's legacy, and after he left the country club, Bert was named head superintendent. From that moment on, Bert carried on for his mentor.

Bert has carried on in grand style, too. Certainly, Vesper, originally a boat club started in 1875 that eventually came to include a Donald Ross golf course, has prospered from Bert's presence. During his tenure as head man, Vesper has undergone reconstruction of 10 greens, a switch to automatic irrigation, the modification of bunkers, and the redesign of teeing areas. With Bert at the maintenance controls, it has more than maintained its stature as a top-grade private club.

Now, Bert, with Manny, becomes part of Vesper's history. "I guess you can call me retired and one of the 'old coots,'" Bert sassed. "But, in reality, I feel rejuvenated. I still have a lot to offer golf. They haven't built the pasture to put me out in. How's that for putting words together?"

**GERRY FINN**

## CALENDAR . . .

- |            |   |
|------------|---|
| March 28   | <b>GCSANE Monthly Meeting</b><br>USGA Seminar<br>The International Golf Club<br>Bolton, Mass.<br>Supt. - Ron Milenski, CGCS   |
| April 24   | <b>GCSANE Monthly Meeting</b><br>Chicopee Municipal G.C.<br>Chicopee, Mass.<br>Supt. - Don Nunes  |
| May 2      | <b>Pro/Media/Supt. Tournament*</b><br>The International Golf Club<br>Bolton, Mass.<br>Supt. - Ron Milenski, CGCS<br>(*Register through NEPGA)                       |
| May 8      | <b>Pro/Supt./Manager/President Tournament*</b><br>Wellesley Country Club<br>Wellesley, Mass.<br>Supt. - David Barber, CGCS<br>(*Register through Club Mgrs. Assoc.) |
| May 23     | <b>GCSANE Monthly Meeting</b><br><b>Joint Meeting with Cape Cod</b><br>Poquoy Brook Golf Club<br>Lakeville, Mass.<br>Supt. - Mike Cummings                          |
| June 6     | <b>Scholarship &amp; Benevolence Tournament</b><br>Franklin Park Golf Course<br>Dorchester, Mass.<br>Supt. - David Laffey   |
| July 10    | <b>GCSANE Monthly Meeting</b><br><b>Supt./Club Official Tournament</b><br>Pleasant Valley Country Club<br>Sutton, Mass.<br>Supt. - Chris Tufts                      |
| August     | <b>GCSANE Monthly Meeting</b><br>TBA  |
| Sept. 25   | <b>GCSANE Monthly Meeting</b><br><b>Team of Two Championship</b><br>Country Club of Pittsfield (tentative)<br>Pittsfield, Mass.<br>Supt. - Jim Conant, CGCS         |
| October 2  | <b>GCSANE Monthly Meeting</b><br><b>Individual Championship</b><br>Mt. Pleasant Country Club<br>Boylston, Mass.<br>Supt. - Todd Sauer                               |
| October 18 | <b>John Shanahan Memorial Pro/Supt. Tournament</b><br>Willowbend Country Club<br>Mashpee, Mass.<br>Supt. - Mark Casey   |
| November 6 | <b>GCSANE Monthly Meeting</b><br><b>Annual 9-Hole Meeting</b><br>Lexington Country Club<br>Lexington, Mass.<br>Supt. - Len Curtin                                   |



# The Super Speaks Out

## This month's question:

*How did the early winter moratorium on snowstorms affect your off-season maintenance schedule?*

### Darren Perry, Wenham Country Club:

"I suppose the difference in early winter snow cover wasn't really a difference at all because of the relatively snow-free winter we had a year ago. But, yes, this year's lack of snow in December and the first part of January gave us some unexpected time to work outside.

"Of course, that lack of snow also meant that we had more than the usual number of golfers still playing deep into December and beyond. In fact, we had a comparatively busy New Year's Day weekend here and even had a tournament as an added attraction. That event, plus low incidence of frost for that time of year, had me keep the pins in until January 7. It could be that our real winter began then, because it snowed six days later. That storm, plus another late in the month, put us under a pretty good cover of white stuff.

"The main advantage of operating without appreciable measure of snow allowed us to concentrate on the maintenance projects that couldn't get our attention during the summer. So, that was a plus.

"The outside work wasn't anything major. It consisted of the normal leaf removal, clearing out of dead trees, drainage work and general police work (debris removal) all over the course.

"Once the course was under influence of appreciable snow in late January, our business retreated to the normal equipment and clubhouse maintenance chores which occupy our winter months.

"The way the weather turns in winter doesn't affect my maintenance plans too much, since my objective on this job (I've been on the course 10 years with four of them as head super) is to accommodate the members. That's my chief concern, to see that their needs are met. That means allowing them to play as long into the winter as possible without making a dent in the projected condition of the course in the spring.

"So, I don't mind it when the weather can't make up its mind as to what we'll get after the high season ends. I can live with a little or a lot of snow cover because there's always something to do regardless of whether I'm working outside or inside."

## THE SUPER SPEAKS

### Tim Hood, Needham Golf Club:

"This is my first year as head super here so I can't compare it with a year ago. In fact, at the time I was on the Belmont Country Club crew.

"However, I'm a Needham native and I'm familiar with the lay of the land and whatever around here.

"My off-season schedule is sort of limited because we carry a small crew in that period. This year, with the no-cover conditions around a little longer than usual, we delayed putting on green covers a couple of weeks. However, they were in place by mid-December. That put our golfers on temporary greens and they continued playing until the first storm in mid-January.

"The off-season, on-course maintenance included normal clean-up work and some refining of bunkers. The main outside project, though, was to continue the concentration on landscape incidentals.

*"I think our turf is tough enough to endure the winter cold. So, the less snow cover, the better."*

**Tim Hood  
Needham G.C.**

"The members here have been pleased with the cosmetics on the approach to the clubhouse and surrounding area. Therefore, while we still could keep improving that aspect of their needs, we did a lot of clean-out and spruce-up work on the clubhouse entrance island. In effect, we were into some serious gardening.

"After that, the attention shifted inside where clubhouse projects like locker room renovations and painting kept us busy. As for the no-snow portion of the winter, I like it a lot. I'd rather not see any snow at all. We don't need snow cover as a turf protector. I think our turf is tough enough to endure the winter cold. So, the less snow cover the better."

### Terry Baker, Cohasset Country Club:

"I liked the big delay in the coming of snowstorms this winter. It gave me a big piece of outdoor time to do some of the things I wanted to do in preparation for an improved golf course in the spring and summer.

"Because of the weather conditions we were able to dredge our brooks and bulldoze a pond that was in need of being cleaned out. That turned out to be a big part of our winter maintenance. That and tree work.

"We're a nice, nine-hole private club with members who really cherish the course and the rest of the grounds. For some reason there has been a hassle about removing trees. However, the trees have encroached on the golf course, causing potential problems with much-needed sunlight and circulation around our greens.

"This winter I think we eliminated one of those problems, a giant pine tree that was blocking out the sun and air at our #2 green. That green had no early morning sun and was a target for strong north winds. But we took that tree down and it has to help bring that green up to snuff.

"Funny thing about the lack of early winter snow cover. It gave us a chance for more time outside but held us back on doing the things that are usually done by now. Which means by late January we were racing to complete our chores such as bringing equipment back to top form. So, it's sort of a Catch-22 situation. But we did the things we knew we had to do if we had the time to do them . . . our outside work. This winter the weather came through for us, for a change."

**GERRY FINN**



# Lawyer threatens golf courses with ADA lawsuit

The GCSAA has been alerted to a form letter being sent to superintendents at various golf courses from a lawyer in Michigan who states that he is wheelchair confined, a golfer, and interested in playing the golf course.

## GCSAA NEWS

The lawyer references the American with Disabilities Act and the Casey Martin case ruling in his effort to require that within 10 days, he and the golf course can "enter into an amicable resolution respecting the offering of a single cart together with removal of any barriers to the parking lot (van accessible parking spots), pro shop (no illegally elevated ramping or steps) and bathrooms (separate stall with wider door, grab bars, adequate counter height). He says if his terms are not met, he will file a complaint. He goes on to list possible dollar amounts that can be recovered per violation. However, he says to avoid litigation, he demands from the club:

1. Purchase of at least two single rider carts;
2. \$2,500 in compensatory damages, costs and attorney fees; and
3. ADA compliant parking spots, entry to pro shop, and bathroom.

The GCSAA government relations staff has spoken to legal counsel concerning this issue and the advice that was given to us was that golf courses should ignore this lawyer's requests and demands. Golf courses are under no obligation to respond to this individual. The standard for this man to sue, which is being injured by a party, does not seem to be present.

We know of at least seven golf courses that have received this letter. If you have received or do receive this letter, you should direct it to your golf course's legal counsel and should not attempt to contact the letter's author. Also, please let Carrie Riordan, GCSAA government relations manager, know you have received a letter. We are tracking this situation in case some action is taken against this individual.

Please contact Carrie Riordan at (800) 472-7878, ext. 610, if you have any questions or need further information. For more information on the ADA, see the GCSAA's 2000 Legislative/Regulatory Agenda.

## GCSANE announces committees for 2000

The following are the complete GCSANE committee assignments for 2000.

**Membership:** Wayne LaCroix, Russell Heller, Carl Oliveira, Robert Ruzsala, David Stowe

**Employment:** Michael Iacono, James Fitzroy, James Reinertson, Robert Ruzsala, Richard Zepp

**Publicity:** James Fitzroy, Bill Spence, Rich Tworig, John LeClair, Russell Heller

**Conference:** Kevin Osgood

**Finance:** Arthur Silva, Michael Iacono, Daniel Higgins

**Welfare:** David Comee

**By-Laws:** Kevin Osgood, Chip Brearly, Robert DiRico

**Scholarship & Benevolence:** David Comee, Greg Frederick, Robert Healey, Michael Iacono, Kevin Osgood, Robert Ruzsala, Arthur Silva, Russell Heller

**Education:** Ron Dobosz, Jr., Ed Gianni, Patty Knaggs, Brian Linehan, Mary Owen  
**Newsletter:** Russell Heller, Mark Casey, Jim Cohen, Greg Albanese

**Golf:** Michael Hermanson, Larry Anshewitz, Daryn Brown, David Comee, Robert Healey, Robert LeBlanc, Chris Tufts

**Turf Research:** James Fitzroy, Rob Larson, Michael Kroian, Jr., Daryn Brown

**IPM:** Michael Iacono, Ron Dobosz, Jr. (co-chair), Daryn Brown, Daniel Higgins, Pat Kriksceonaitis

**Quimet Fund:** James Fitzroy, Richard Duggan, Rob Larson, Roy Mackintosh, Jim Reinertson, Chris Tufts

**GCSAA Chapter Liaison:** James Fitzroy

**AMGO:** Kevin Osgood, Robert Ruzsala

**Handicap:** David Comee, Michael Hermanson

**Certification Attestor:** Robert DiRico

**First Tee:** Scott Hurt

**Government Relations:** Kevin Osgood

## Scotts sells professional turf division

The Scotts Company has agreed to sell its professional turf businesses in the United States and Canada to The Andersons and Nu-Gro. The transaction includes a long-term supply agreement under which Scotts will use its proprietary manufacturing processes to produce products for the two companies.

The acquisition includes Pro-Turf, Contec, and several other brand names, as well as the distribution network, customer lists, and trademarks and copyrights associated with the professional turf market. It doesn't include the use of the Scotts brand or any of the company's consumer, professional grass seed, or professional horticultural businesses. The agreement is expected to be finalized by May.

According to James Hagedorn, president of Scotts North America, the decision to sell this well-established line of products is designed to focus company resources on consumer brands and consumer markets.

The Andersons Processing Group is recognized as a leader in particle size

technology with its TeeTime, Anderson Professional Turf products, and other granular products. Nu-Gro is a leading Canadian manufacturer/marketer of consumer lawn and garden products under brand names that include CIL and Wilson.

## BUSINESS NEWS

All three companies expressed the belief that the people involved in the agreement are as important as the technology. "Scotts' associates are valued for their knowledge and dedication to this industry and will be essential to the success of the business," said Rick Anderson, president of The Andersons Processing Group.

"This sale provides Andersons with every significant nitrogen source, other than Polyon, in North America," said Scott Todd, senior vice president of The Scotts Company professional business group.

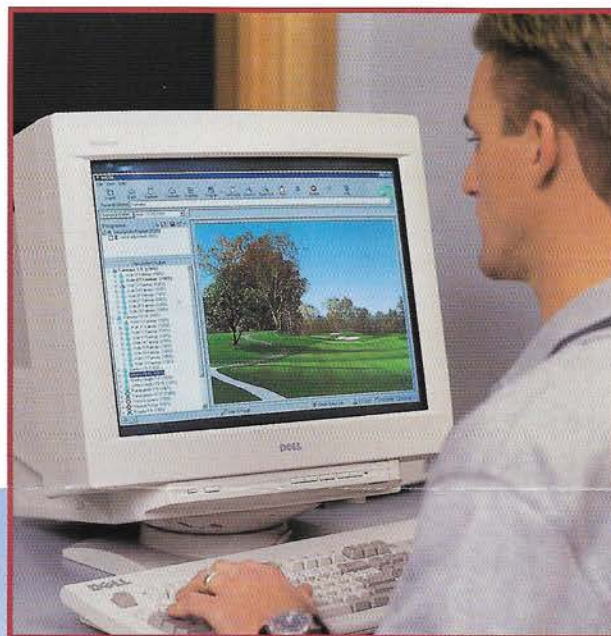


*It's Time to Take a Closer Look at Hunter Golf*

## Introducing *Vista* - With the Power of Real-World Visual Control

**Reality-Based** Software with Animated Graphics

Hunter Golf introduces Vista, the most advanced and powerful irrigation control system available today. Vista utilizes the precision of your irrigation consultant's AutoCAD™ design to create realistic 3D graphics that allow you to "drive" every fairway on your course, fine-tuning the system from a real-world golf cart perspective. Advanced yet easy to use, Vista features truly automated programming, real-time dynamic flow balancing and a familiar internet-style interface. See your local distributor and take a closer look at the full range of innovative products from Hunter Golf.



1940 Diamond Street, San Marcos, California, USA 92069  
Tel: 760-744-5240 • Fax: 760-744-7461 • [www.huntergolf.com](http://www.huntergolf.com)



# UMass seeks assistance with snow mold study

Dr. Gail Schumann at the University of Massachusetts is conducting a study to help deal with some of the snow mold problems and Fusarium patch (pink snow mold) in particular. The study will include fungicide choices and timing of fall applications for winter snow mold control, disease prediction, and fungicide choices during spring/fall outbreaks, and evaluation of possible fungicide resistance problems.

*Try to submit samples in the early stages of the disease. Note if the disease is from winter activity or new outbreaks in spring and/or fall.*

To obtain as much information as possible in this study, we need cooperators to:

1. Submit samples of Fusarium patch (pink snow mold) to add to our culture collection. Try to submit samples in the early stages of disease. Note if the disease is from winter activity or new outbreaks in spring and/or fall. Include as much cultural information as possible (location of sample, recent fertilizer and chemical applications, soil pH, turfgrass species and cultivar, weather conditions at the time of activity - minimum and maximum temperatures, recent rainfall). Any of this information will be helpful.

2. Record conditions during spring and fall Fusarium patch outbreaks to help us develop a prediction system for this 11-month New England disease.

If you would like to be a cooperator in this study, please contact us. We will mail or fax you recording forms.

The form includes the following introductory information: "This record sheet is for information on Fusarium patch outbreaks in spring and fall. These usually

appear quite suddenly as small coppery to greasy looking patches (1"-3" in diameter). They are most common on high

## UMASS NEWS

fertility turf and in shady or poorly drained areas. Sometimes symptoms are confusing because the fungus is easily streaked during mowing. If you are uncertain about the diagnosis, try putting a cup-cutter plug in a plastic bag overnight and see if the pinkish fungus appears on the edges of the patches by the next morning. You may also send samples to the UMass Turf Disease Diagnostic Lab

for confirmation and to add to the research collection."

The form requests information on date/location of outbreak, severity, air and soil temperatures in days leading up to the outbreak, rainfall, drainage, fertilizer/fungicide applications, soil pH, and recent lime applications.

The forms are also available at the UMass Turf Program website: <http://www.umass.edu/umext/turf>.

Mail samples and reports to: Dr. Gail Schumann, Department of Microbiology, Fernald Hall, UMass, Amherst MA 01003-2420. Phone: (413) 545-3413; fax: (413) 545-2532; E-mail: [schumann@pltpath.umass.edu](mailto:schumann@pltpath.umass.edu).

## Green Environmental, Inc. offers clients consulting, engineering, & construction

Glenn C. Ferguson founded Green Environmental, Inc. (Green) in 1986. This New England-based environmental consulting firm has grown from a single-man operation to approximately 70 employees. The firm includes three divisions: environmental consulting, civil engineering, and construction.

## FRIEND PROFILE

Glenn has one basic philosophy towards project work: Keep things simple for the client! This was the central idea behind the foundation of Green. Glenn feels that it is beneficial for clients to have the ability to do "one stop shopping", meaning the same firm will see projects through from inception to completion. This approach is unique, because many companies do only a portion of a project. Green's primary goal is to provide complete and cost-efficient services. We strive to deliver projects on or ahead of schedule and within budget.

Green has provided services for real estate developers, industry, underground storage tank facilities, municipalities, federal agencies, state agencies and private individuals that require professional

assistance in environmental engineering and construction. Green is involved in a wide variety of projects including site assessments, hazardous waste management, remediation system design/construction, site work design/construction, underground storage tank design/replacement, and utility design and construction.

Green employs a seasoned staff of professional engineers, licensed site professionals, geologists, hydrogeologists, environmental scientists, environmental technicians, construction superintendents, and licensed heavy earth work personnel. Green's professionals specialize in meeting the demand for a mixture of consulting, engineering and contracting services. Green takes pride in offering clients speedy and competent assistance through any environmental process, including those which require services of a Massachusetts Licensed Site Professional (LSP). The staff at Green possesses a combined total of over 350 years of experience in environmental engineering, geotechnical engineering, geology and earthwork services.

For more information on Green's services, contact Glenn C. Ferguson, president, at (617) 479-0550, or visit the web site: [www.greenenvironmental.com](http://www.greenenvironmental.com).



## SoftSpikes and Superintendent News announce new award for superintendents

SoftSpikes and *Superintendent News* plan a new award to honor the top professional in the golf course management business. The "Superintendent of the Year" award will be presented in February 2001. Nominations will be accepted through Nov. 1, 2000.

"We constantly work with golf course superintendents in our product development and testing process, and are keenly

aware of how demanding their jobs are," said Jon Hyman, SoftSpikes CEO. "We're pleased to sponsor an award that honors their skill and dedication."

Selection of the winner will be based on skills in managing labor, working within budgets, educating & advancing coworkers, negotiating with government agencies, preparing for tournaments, serving golfers,

upgrading the course, and dealing with extreme situations or emergencies.

Nominations can be made by anyone, and should be mailed to Supt. of the Year, Supt. News, 7657 Commerce Center Drive, Orlando, FL 32819. Nomination forms will appear in coming editions of *Superintendent News*. For more information, call Bradley Klein at (407) 345-5500.

## DIVOT DRIFT...announcements...educational seminars...job opportunities ...tournament results...and miscellaneous items of interest to the membership.

### MEMBERSHIP

**Welcome New Members:** Manuel DeSousa, Quail Hollow C.C., Supt.; David Huss, Groton C.C., Supt.; Matthew Behl, Haverhill C.C., Asst.; John Laffey, Fresh Pond G.C., Asst.

**Proposed for Membership:** Gary Kessener, Quarry Hills G.C., Supt.; William Salinetti III, Portsmouth C.C., Supt.; Rod Karchner, CGCS, Ipswich C.C., Supt.; James Biundo, Oakley C.C., Asst.; Theodore Symonowicz, Winchester C.C., Asst.; Matt Elsworth, Meadowbrook G.C., Asst.

### INFORMATION

**We were sorry to learn** of the passing of Carol (Pepin) French on February 18. She was the wife of Bear Hill G.C. superintendent Dick French, with whom she celebrated their 31st anniversary on January 19. Carol was an art teacher at McCarthy Junior High School in Chelmsford, and worked for the school department for 30 years. She was a member of the Puritan Chapter of the Order of the Eastern Star #54 of Lowell, and a board member and member of the New England Paint Horse Association. In addition to her husband, she leaves a daughter, Heather Rager; two brothers, Everett "Skip" Pepin, Jr. and Garry Pepin; and many nieces and nephews. Our condolences are extended to the entire French and Pepin families.

**Thanks to the following staff** at Salem C.C. who hosted a terrific February meeting: supt. Kip Tyler, club mgr. Paul Guidi, banquet mgr. Ann Grieves, and chef Fred Yanosick. Thanks also to Terry Bastion, who spoke on environmental management.

**The Chapter Team** of Mike Iacono, Ron Kirkman, Wayne Zoppo, and Gary Luccini won their flight at the GCSAA Golf Championship in Alabama. Congratulations to all. In addition to his team win, Ron Kirkman won the Senior II division of the Golf Championship. Well done, Capt. Kirk.

**Best wishes** for a speedy recovery to Jack Cronin, who is experiencing health problems.

**Greg Mackintosh** recently left Twin Brooks G.C. to take the superintendent position at Widow's Walk G.C. Good luck, Greg.

**Matt Crowther** of Mink Meadows G.C. recently achieved Certified Golf Course Superintendent status from the GCSAA. Well done, Matt.

**The First Annual Stockbridge Alumni Golf Classic** will be May 18 at Westminster C. C. Cost per person is \$100 and proceeds go to the Stockbridge School. Checks may be made out to the Stockbridge Foundation, Inc. and sent to Carol Nashe, 566 Commonwealth Ave., Ste. 601, Boston, MA 02215. Call Carol at (617) 437-9757 for more information, or consult [golfonthego.com](http://golfonthego.com).

**Congratulations to Glen LaChepelle.** He recently accepted the superintendent position at The Orchards G.C., and on January 24 his wife, Gina, gave birth to a baby girl, Giavann.

**The position opening notice** in last month's *Newsletter* for Framingham C.C. should have read *2nd assistant*. Our apologies for the mistake.

**Purdue University** is offering its Turfgrass Pest Management Correspondence Course. The course covers fundamentals of turf management; IPM; chemical pesticides & environmental fate; safety; equipment & calibration; turf diseases; weeds; and management of arthropod & vertebrate pests. Course materials include reading materials/chapter exams for each section. Upon passing the final exam, you will receive a Purdue University Certificate of Completion. GCSAA has approved this course for 3.0 CEUs. Cost is \$275. For information contact Self-Directed Learning Programs, Purdue University, 1586 Stewart Ctr., Rm. 116, W. Lafayette, IN 47907-1586, or call (800) 830-0269.

**Mark your calendar** now for two GCSANE sponsored seminars. Integrated Environmental Management (Nov. 14) and Turfgrass Traffic Stress: Physiology & Management (Nov. 15) will be held at The International G.C., Bolton, Mass.

**WANTED:** The *Newsletter* plans a Super Speaks Out topic on equipment leasing. Anyone leasing maintenance equipment and willing to talk to Gerry Finn for a few minutes can call Russ Heller at (978) 256-5664.

### POSITIONS AVAILABLE

**Assistant.** Sharon C.C. is a 9-hole private facility currently involved in construction of three new holes. They seek an individual to assist the superintendent in all aspects of course maintenance. Individual must have a good background of work experience and good work ethic. Must have or obtain a Mass. pesticide applicator's license. Compensation includes salary, health insurance, vacation, sick and personal time, dues paid for local associations, conferences/seminars, and golf privileges. Send resume to Andrew Streeter, GCS, Sharon C.C., 149 East St., Sharon, MA 02067.

**2nd Assistant.** Pine Brook C.C. is a private, 18-hole course in Weston, Mass. designed in 1924 by Styles and Van Cleek. Individual should possess a desire to excel. Education required depends on experience level achieved. Must be self-motivated and able to work long hours. A team-play attitude is a must. Responsibilities include crew supervision, implementing daily schedule, course setup, plant protectant applications, record-keeping, scouting, and irrigation system maintenance. Salary/wages commensurate with experience. Included are paid winter vacations, 90% employer-paid health insurance, 401(k) plan, dues for local & national associations, expenses for local turf conference & seminars, and golfing privileges. Send resume to Michael V. Iacono, CGCS, Pine Brook C.C., 42 Newton St., Weston, MA 02493.

**Assistant.** Wachusett C.C. is a semi-private 18-hole golf course bordering Worcester, Mass. Established in 1927, the course was designed by Donald Ross. The club is currently involved in an in-house restoration project. Individual must have a minimum of a winter school certificate and two years of golf course experience. Individual must be highly motivated and willing to work long hours. Must be able to attain a Mass. Pesticide applicator's license (cat. 37). Salary is commensurate with experience. Compensation includes paid vacation, 80% employer-paid health & dental insurance, and golf privileges. Send resume by March 17 to: Golf Course Supt., Wachusett C.C., 187 Prospect St., West Boylston, MA 01853.



# Please Patronize these FRIENDS of the ASSOCIATION

## A-OK Turf Equipment Inc.

1357 Main St., Coventry, RI 02816-8435  
Articulator, Terra Topper, Greens Groomer  
brush, & used equipment.  
Mike Cornicelli - (401) 826-2584

## A.A. Will Materials Corp.

168 Washington St., Stoughton, MA 02072-1748  
Top dressing & bunker sand, decorative stone,  
landscape materials.  
Frank Will, Charlie Downing  
(800) 4-AA-WILL

## Agr-Evo U.S.A. Co.

Wilmington, DE  
Acclaim Extra, Banol, ProStar, ProGrass,  
Finale, Turcam, DeltaGard.  
David Sylvester - (860) 828-8905

## Allen's Seed Store Inc.

693 S. County Trail, Exeter, RI 02822  
Specializing in quality seed and related  
golf course maintenance supplies.  
Gregg Allen - (800) 527-3898

## Bay State Fertilizer/MWRA

100 First Ave., Boston, MA 02129  
Manufacturer & supplier of dry organic fertilizers.  
Kristen Patneude - (617) 788-4437

## Bayer Corporation

118 Ellery Ave., Middletown, RI 02842  
Bayleton, Merit, Dyllox, Tempo  
Brad Herman - (800) 842-8020

## The Borden Company

114 Summer St., Maynard, MA 01754-2216  
Bulk limestone dealer.  
Jack Borden - (978) 897-2571

## Boston Irrigation Supply Company

60 Sturgis Way, Dedham, MA 02026  
Distributor, irrigation supplies & accessories.  
John Ramey, Paul Kenyon, Robert Barbati  
(781) 461-1560

## Breudan Corporation

40 Walker St., Swansea, MA 02777  
Doug Hopper - (508) 379-0092

## The Cardinals, Inc.

166 River Rd., P.O. Box 520  
Unionville, CT 06085-0520  
Golf course and landscape supplies.  
John Callahan, Dennis Friel - (800) 861-6256

## Cavichio Landscape Supply, Inc.

110 Codrj Lane, Sudbury, MA 01776  
Annuals, perennials, garden mums, ground  
covers, loam, and mulch.  
Darren Young - (978) 443-7177

## Cedar Lawn Tree Service, Inc.

32 Nickerson Rd., Ashland, MA 01721  
Pruning, fertilization, removal,  
and professional care.  
William P. Maley - (508) 881-2622

## Cornish, Silva, & Mungeum, Inc.

207 N. Main St., Uxbridge, MA 01569  
Golf course architects.  
(508) 278-3407

## Country Club Enterprises

P.O. Box 820, Cataumet, MA 02534  
Club Car golf cars, Carryall utility vehicles.  
Ed McGuire, Dave Farina, Steve Butler  
(800) 662-2585

## Country Golf, Inc.

4852 Westchester Dr., Traverse City, MI 49684  
Golf course construction & reconstruction;  
specialists in Donald Ross courses.  
Jerry Deemer - (616) 947-5751

## Douglas Equipment Corp.

90 Douglas Pike, Smithfield, RI 02917  
John Deere golf and turf equipment dealer.  
Paul T. Surabian, Allen Vadaia  
(401) 232-3700

## Dow/Elanco

560 Ashwood Rd., Springfield, NJ 07081  
Bob Scott - (908) 510-5549

## Michael Drake Construction, Inc.

240 Walnut St., Framingham, MA 01702  
Golf course reconstruction; professional shaper.  
Michael Drake - (508) 875-8247

## F.A. Bartlett Tree Expert Co.

640 Hale St., Beverly Farms, MA 01915  
Complete tree care, landscape design  
& construction, disease control,  
long-range planning.  
Ben Staples - (978) 927-1590

## F.D.I., Inc.

(Fairway Design Illustration)  
95 Railroad Ave., Warren, RI 02885  
Custom granite signs and markers.  
Joseph K. Martin, Robert Page  
(800) 358-8337

## Gold Star Nursery & Sod Farm

250 West Rd., Canterbury, NH 03224-2127  
Growers of turfgrass and ornamentals  
Malcolm McPhail  
Lexington, MA - (781) 861-1111  
Canterbury, NH - (603) 783-4717

## Green Environmental

216 Ricciuti Dr., Quincy, MA 02169  
Civil engineering, Title V, environmental consulting/  
site assessment, aboveground/UST construction  
Glenn Ferguson - (617) 479-0550

## Greeno, Inc.

2352 Main St., Concord, MA 01742  
Tree transplanting, landscape construction,  
and masonry  
Kevin Mulcahy - (800) 439-7244

## Charles C. Hart Seed Co., Inc.

P.O. Box 9169, Wethersfield, CT 06109-0169  
Roy Sibley, Dick Gurski  
(800) 326-HART

## Hartney Greymont

433 Chestnut St., Needham, MA 02492-2822  
Tree care, landscape construction, consulting.  
Mark Tobin - (781) 444-1227

## International Golf Construction Co.

5 Purcell Rd., Arlington, MA 02474  
Golf course construction.  
Antonios Paganis - (781) 648-2351;  
(508) 428-3022

## Irrigation Management & Services

21 Lakeview Ave., Natick, MA 01760  
Irrigation consultation, design, and  
system evaluation.  
Bob Healey, ASIC, CID - (508) 653-0625

## Tom Irwin Inc.

118 A St., Burlington, MA 01803-3404  
Jack Peterson, Wayne Ripley, Paul Skafas,  
Chris Peterson, Jack Pluta, Greg Misodoulakis  
(800) 582-5959

## Ken Jones Tire, Inc.

71-73 Chandler St., Worcester, MA 01613  
Distributor of tires for lawn & garden, trucks,  
cars, industrial equipment, and golf cars.  
Gerry Jones - (508) 755-5255

## Koonz Sprinkler Supply, Inc.

39 Waverly Ave., Springfield, NJ 07081  
(973) 379-9314

## Landmark Construction

P.O. Box 662, Winchester, MA 01890  
Tee/bunker shaping & remodeling, cart paths,  
drainage, tree planting, landscape construction.  
Daniel Champion - (781) 729-3250

## Larchmont Engineering

11 Larchmont Lane, Lexington, MA 02420-4483  
Keith Savage - (781) 647-3361

## Lazaro's Golf Course

**Supplies & Accessories**  
dba Hammond Paint and Chemical Co., Inc.  
738 Main St., Suite 223, Waltham, MA 02154  
Complete line of golf course accessories;  
Standard, Par Aide, Eagle One.  
Joe Lazaro - (781) 647-3361

## Lesco, Inc.

20005 Lake Rd., Rocky River, OH 44116  
Ron Tumiski, Mike Donohue, Jim Wierzbicki  
(800) 321-5325

## Lofts Seed, Inc.

22 Lantern Lane, Exeter, RI 02822  
Victoria Wallace - (800) 648-7333

## D.L. Maher Co.

71 Concord St., P.O. Box 127  
North Reading, MA 01864-0127  
Water supply specialists; water wells  
& pumping equipment.  
(781) 933-3210

## McNulty Construction Corp.

P.O. Box 3218, Framingham, MA 01705-3218  
Asphalt paving of cart paths, walkways,  
parking areas; imprinted asphalt.  
John McNulty - (508) 879-8875

## Miller Golf Construction

1 Leicester Rd., Marblehead, MA 01945  
Golf course construction & renovation  
John Miller - (781) 631-2030

## R.F. Morse & Sons, Inc.

22 Cranberry Hwy., Wareham, MA 02576-0099  
Larry Anshewitz, Jack Cronin, Chris Cowan,  
Alan Anderson - (508) 295-1553

## Nardone Sand and Gravel, Inc.

37 Power Rd., Westford, MA 01886-4112  
Topdressing sand & mixes, bunker sands, root-zone  
mixes, loam, cart path materials, drainage stone.  
Greg Frederick - (978) 692-8221

## North Shore Hydroseeding

20 Wenham St., Danvers, MA 01923  
Hydroseeding, erosion control, & tree services  
Brian King - (978) 762-8737

## Novartis Specialty Products, Inc.

394 Monson Tpk. Rd., Ware, MA 01082  
Banner MAXX, Barricade, Subdue MAXX, Primo  
Dave Ravel - (413) 967-6745

## Partac Peat Corporation

Kelsey Park, Great Meadows, NJ 07838  
Heat treated topdressing, golf hole targets,  
turf blankets, other specialty golf supplies.  
Jim Kelsey - (800) 247-2326

## P.I.E. Supply Co.

For your irrigation needs; dedicated to sales  
and service of quality irrigation equipment.  
(203) 878-0658

## Prescription Turf Services, Inc.

P.O. Box 39, Middleton, MA 01949  
Deep-tine and hydro-injection services,  
custom fertilizer & pesticide applications,  
fairway aeration, topdressing operations.  
(978) 777-1663

## Read Sand and Gravel, Inc.

171 VFW Drive, Rockland, MA 02370  
Topdressing, root-zone mixes, bunker sand,  
3/4 & 3/8 screened loams, cart path materials,  
mulch, drainage stone.  
Joe Farina - (800) 660-2955

## Sawtelle Brothers

65 Glenn St., Lawrence, MA 01843  
Bob Brown, Larry Bunn, Mike Hannigan,  
Frank Higgins, John Lenhart - (978) 682-9296

## SBI Turf Services

65 Glenn St., Lawrence, MA 01843  
Deep-tine, core, & water-injection aerification,  
DOL & Verti-Seed overseeding, irrigation services.  
Jim Favreau - (800) 999-TURF

## Shawnmark Industries, Inc.

P.O. Box 8966, Warwick, RI 02899  
Matt Howland - (401) 295-1673

## Sodco Inc.

P.O. Box 2, Slocum, RI 02877  
Bluegrass/Fescue, Bluegrass/Rye,  
Bluegrass/Fescue/Rye, Bentgrass  
Matt Faherty, Pat Hogan - (800) 341-6900

## Sports Club Management

104 Wyman Rd., Braintree, MA 02184  
OSHA and EPA compliance services and training  
Ron Smith - (781) 848-5978

## Dahn Tibbitt

### Professional Golf Services

dba Weed & Feed, Inc.  
20 Clark Lane, Marshfield, MA 02050  
Specialists in golf course construction,  
bunker restoration, and irrigation installation.  
(781) 837-3503

## Tee and Green Sod, Inc.

P.O. Box 418, Exeter, RI 02822  
Bentgrass, Bluegrass, and Blue/Fescue sod.  
Dave Wallace, Robin Hayes  
(401) 789-8177

## Tuckahoe Turf Farms, Inc.

P.O. Box 167, Wood River Junction, RI 02894  
Chris Beasley - (800) 556-6985

## Turf Enhancement Enterprises

6 Jessica J Dr., Millbury, MA 01527  
Florist products, Precision Small Engine Co.,  
Douglas Rollers, Trion Lifts.  
Tom Fox - (508) 865-9150

## TurfNet Associates, Inc.

21 Brandywine Rd., Skillman, NJ 08558  
Cutting edge communication for  
the golf course industry.  
Peter McCormick - (800) 314-7929

## Turf Partners, Inc.

15 Londonderry Rd., Londonderry, NH 03053  
Turf & ornamental supplies.  
Chuck Bramhall, Jim Cohen, Geoff Houghton,  
Rick Howe, Mike Kroian, Scott Mackintosh,  
Mike Nagle - (800) 228-6656

## Turf Products Corp.

157 Moody Rd., Enfield, CT 06082  
Distributors of Toro irrigation and maintenance  
equipment and other golf-related products.  
Irrigation: Tim Berge, Palmer Whitney  
Commercial: Paul Hallock, Rick Moulton,  
Mike Turner - (800) 243-4355

## United Horticultural Supply

18 Legate Hill Rd., Sterling, MA 01564  
Fertilizer, seed, chemicals, and IPM.  
Glenn Larabee, Bruce Chapman, Mark Miller  
(800) 224-4440

## Varney Bros. Sand & Gravel

79 Hartford Ave., Bellingham, MA 02019  
Concrete golf cart paths.  
Kenneth Mooradian - (800) 441-7373

## Waterflowers Ecological Design

116 North Street, North Reading, MA 01864  
Environmental audits, planning/design,  
& permits for all environmental details  
Terry Bastion - (978) 664-8059

## Winfield Nursery, Inc.

1320 Mountain Rd., Suffield, CT 06109  
Wholesale nursery trees and shrubs.  
Stan Hildreth

## Philip Wogan & George F. Sargent, Jr.

Golf Course Architects  
17 Walker Rd., Topsfield, MA 01983  
(978) 887-3672

## Zip Type Service

50 Kent Street, Newburyport, MA 01950  
Design, printing, mailing, advertising specialties.  
Sheila Johnson - (978) 462-9358



## Meet host superintendent Ron Milenski, The International G.C.

The host superintendent for the March meeting of GCSANE is Ron Milenski of The International Golf Club in Bolton, Mass.

Ron has been the superintendent at The International for the last 20 years. His prior stints include Innisbrook Golf and Country Club, Greenock Country Club, and Greylock Glen Golf Club. He has been certified for over 15 years.

Ron's educational stops include the University of Massachusetts, Fitchburg State College, and Berkshire Community

College. He has served on the GCSAA communication and publications committees. In addition, he has served GCSANE as treasurer and education chairman.

### HOST PROFILE

He is active in the Audubon Cooperative Sanctuary System, having completed the IPM, Water Enhancement, Water Conservation, and Wildlife Management programs.

When not working, he spends his free time at his home in Princeton with his wife, Deb, and 5-year old son Michael. He enjoys family activities, golf, and reading. He also coaches local tee-ball and soccer teams.

The International Golf Club is a Cornish Jones design that was organized in 1955. The private 18-hole club plays 8325 yards from the Tiger tees and a mere 6550 from the regular (mortal) tees. The velvet/Pennncross greens average 10,000 square feet. Tees and fairways consist of bentgrass and poa. The rough is a mixture of bluegrass, fescue, and rye.

FIRST CLASS

First Class Mail  
U.S. Postage  
PAID  
Newburyport, MA  
Permit No. 61

THE NEWSLETTER



Return to:  
175 Highland Avenue  
Needham, MA 02494-3034