



THE NEWSLETTER

August 2013

of the **Golf Course Superintendents Association of New England, Inc.**

Sponsors and administrators of the Troll-Dickinson Scholarship Fund – Awarded yearly to deserving Turf Management Students.

GCSANE Scholarship & Benevolence Tournament

By: Mike Hughes

In February of 1924, 41 greenkeepers got together in Boston for dinner to formally organize their tightly knit professional community. What came from this dinner is what we now call the Golf Course Superintendent's Association of New England. The early years of our Association were instrumental in creating camaraderie among greenkeepers, as well as elevating the professional standards of the industry. Over the last 90 years, GCSANE has evolved into a vast and diverse collection of professionals in the turf care industry. From educators to researchers to golf course superintendents, GCSANE is the framework that connects us all. The community created by GCSANE is there to support its members. I know many of us have picked up the member directory at least once or twice to contact a superintendent, salesperson, or educator to get a different perspective or advice regarding maybe a new maintenance practice or an unfamiliar pest. This support system is instrumental in the evolution and the constant progression of our professional industry but is just as instrumental to its association members on a personal level.

In 1993, GCSANE established the Scholarship and Benevolence Fund, a fund created to help members and their families. Scholarships are awarded annually by a committee to spouses, children, and grandchildren of GCSANE members who are pursuing higher education. The S & B fund also assists families of association members when tragic or health issues debilitate. Since 1993, the S & B fund has helped many members in difficult times and has afforded many of our children, grandchildren, and spouses the opportunity to attend college and pursue their dreams. The S & B fund is there to support us, if and when we need it. The engine that drives its funding is the Annual Scholarship and Benevolence Golf Tournament set this year for September 23, 2013. This year's tournament is being hosted by Golf Course Superintendent Eric Richardson at the historic Essex County Club.

The north shore of Massachusetts is quite the "hot bed" for distinguished golf courses. Right at the top of the list is Essex County Club, located in Manchester-by-the-sea, MA. Along with being a classic 18 hole Donald Ross design, Essex CC is loaded with historical significance with regards to

the game of golf. Opened in 1893, Essex CC helped golf get going in America, as it began as the first 9 hole golf course in New England. In fact, if it weren't for a delay in the U.S. Mail over 100 years ago, Essex would have been one of the founding 5 courses of the USGA. Instead, Essex CC was admitted as the 6th member of the USGA.

Renowned golf course architect, Donald Ross not only designed the current layout at Essex, but also was the club professional, starting in 1909. The third green at Essex was part of the original 9 holes and is considered to be the oldest green in continual use in the United States. Essex County Club is also meaningful to women's golf. In 1912, club member, Margaret Curtis, won the Ladies' National Amateur Championship for the 3rd time, this time at her home course of Essex CC. After her victory, Margaret and her sister Harriot (the Champion in 1906), donated the Curtis Cup to the USGA and Ladies Golf Union (LGU). In 1931, the Curtis Cup Matches were created, a competition between United States and Great Britain and Irish amateur female golfers. Essex County Club has hosted the 1938 and 2010 Curtis Cup matches.

Superintendent Eric Richardson will be hosting the S & B for the first time and considers it an honor. "For me personally" said Eric, "there are very few causes better than helping a fund that helps kids get an education and helps support families that have fallen on tough times." Eric describes his club as one that is always trying to give back to the game of golf, whether it be hosting MGA and WGAM events or supporting the Ouimet Scholarship Fund. "It took about 10 seconds to get approval to host this event", said Eric.

Eric's path to Essex CC has brought him from west to east, with a few stops on the way. Growing up in suburban Los Angeles, CA, Eric began mowing lawns and doing landscaping throughout his teenage years. While attending college for Criminal Justice, Eric got a job on a golf course to



Eric Richardson

GCSANE BOARD OF DIRECTORS

PRESIDENT

Mark Gagne
233 Baker Street, Walpole, MA 02081
508-668-3859 Fax: 508-668-9969
Email: Mgage@walpolecc.org
Walpole Country Club

VICE PRESIDENT

Scott Lagana, CGCS
840 Oak Hill Road, Fitchburg, MA 01420
978-342-6451 Fax 978-345-2044
Email: slagana@oakhillcc.org
Oak Hill Country Club

TREASURER

Michael Luccini, CGCS
10 Griffin Road, Franklin, MA 02038
508-520-3615 Fax: 508-528-1885
Email: Mluccini@verizon.net
Franklin Country Club

SECRETARY

David W. Johnson
179 Fletcher Street, Whitinsville, MA 01588
508-234-2533 Fax: 508-234-2533
Email: djohnson.wgc@verizon.net
Whitinsville Golf Club

TRUSTEE (Membership)

Jeffrey Urquhart
70 Green Lodge Street, Canton, MA 02021
781-828-2953 Fax 781-828-3220
Email: jmartin101@gmail.com
Milton-Hoosic Club

TRUSTEE (Government Relations)

J. Michael Rose
181 Winter Street, Belmont, MA 02478
617-484-5360 Fax 617-484-6613
Email: mrose@belmontcc.org
Belmont Country Club

TRUSTEE (Scholarship & Benevolence)

David Stowe, CGCS
30 Western Avenue, Natick, MA 01760
617-789-4631 Fax 617-789-4631
Email: Newtonmaint@aol.com
Newton Commonwealth Golf Club

AFFILIATE TRUSTEE

Mark Casey
890 East Street, Tewksbury, MA 01876
617-990-2427 Fax: 978-409-0445
Email: mcasey@mte.us.com
MTE - Turf Equipment Solutions

FINANCE CHAIRMAN

Donald D'Errico
25 Tiot Street, Sharon, MA 02067
508-530-2113
Email: donny@springvalleycountryclub.com
Spring Valley Country Club

GOLF CHAIRMAN

Jason VanBuskirk
58 Randall Road, Stow, MA 01775
978-568-1100 ext. 121
Email: jvanbuskirk@stowacres.com
Stow Acres Country Club

EDUCATION CHAIRMAN

Patrick VanVleck
103 Cochituate Road, Wayland, MA 01778
508-358-1104 Fax: 508-358-2359
Email: patrickvanvleck@sandyburr.com
Sandy Burr Country Club

NEWSLETTER CHAIRMAN

Peter J. Rappoccio
246 Ornae, Concord, MA 01742
978-371-1089 Fax: 978-369-7231
Email: ges@concordcc.org
Concord Country Club

PAST PRESIDENT

Jason S. Adams
27 Cherry Street, Wrentham, MA 02093
781-828-6540 Fax: 781-326-3801
Email: jadams@bluehillcc.com
Blue Hill Country Club

ASSOCIATION MANAGER

Donald E. Hearn, CGCS
300 Arnold Palmer Blvd., Norton, MA 02766
774-430-9040 Fax: 774-430-9101
Email: donhearn@gcsane.org

BUSINESS MANAGER, THE NEWSLETTER

Julie Heston
Phone: (401) 934-7660 Email: jheston@verizon.net

GCSANE Headquarters

300 Arnold Palmer Blvd., Norton, MA 02766
Tel: (774) 430-9040 Fax: (774) 430-9101
Web Site: www.gcsane.org

Any opinions expressed in this publication are those of the author and/or person quoted, and may not represent the position of GCSANE. Information contained in this publication may be used freely, in whole or in part, without special permission as long as the true context is maintained. We would appreciate a credit line.

Notice of the Annual Pro-Superintendent Championship

**2013 NEPGA Pro-Superintendent
Wednesday, October 23 (this is a change of date)**

**Black Rock Country Club
9am Shotgun**

**\$300 entry fee for the team, includes:
Golf, Cart, Range, Continental Breakfast, Lunch and Prizes**

**Format is Select Drive, Alternate Shot,
40% of Amateur Handicap**

**Professionals will register the teams through the
NEPGA. For event details, please visit the tournament
information page below:**

**[http://nepga.bluegolf.com/bluegolf/nepga13/event/
nepga1386/index.htm](http://nepga.bluegolf.com/bluegolf/nepga13/event/nepga1386/index.htm)**



Hillcrest Turf Services

**Providing quality service to
golf courses**

- **Dethatching**
- **Root Pruning**
- **Seeding**

Michael Parks

617-852-0479

michaelparks09@comcast.net

earn some extra money. It was at this moment that Eric realized his true passion for the golf course industry and decided to earn his Turfgrass Management degree from Michigan State University. At Michigan State, Eric participated in an internship for David Heroian at Myopia Hunt Club. At Myopia, Eric found both a mentor in David and an affinity for the north shore of Massachusetts. Upon graduation, Eric found his way to Chicago Golf Club as an Assistant Superintendent under Jonathan Jennings. Eric credits Jonathan for instilling in him a strong work ethic and lessons of dedication. While at Chicago GC, Eric received and accepted an offer from Dave Heroian to return to Myopia Hunt Club as the First Assistant. Four years later, Eric became only the 6th Golf Course Superintendent of Essex County Club.

Golf course maintenance is no easy task, especially when dealing with a course that has been around for a century. Superintendent Eric Richardson does an outstanding job, not only maintaining the course but constantly making improvements to adapt the course to today's high demands. Over the last 6 years, Eric and his staff have taken on many course improvement projects. Under the guidance of Bruce Hepner of Hepner Golf Designs, Eric and crew have removed over 10,000 trees, renovated and uncovered many bunkers, expanded tees and collars, and renovated tees. All but about 50% of the tree work was completed "in-house". Along with these improvements, Eric hosted a televised golf event, the 2010 Curtis Cup, and has overseen the construction of two new maintenance buildings as well as the installation of a new irrigation system. Eric credits his staff for all they do to help maintain the course. Equipment Technician, Mark Sheridan is a New England native that Eric considers "one of the most talented techs around". Assistant Superintendent, Kevin Richardson, worked previously at Myopia Hunt Club and has spent the last three years under Eric while Randy Corbin, previously of Winged Foot, became an Assistant Superintendent of Eric's in 2012.

The Scholarship and Benevolence Tournament is a great way to give back to our Association. Entrance fees go right to the fund, so sign yourself and maybe a few of your club officials up for a foursome. If you are unable to play, donations to the fund are always welcome. However, participating in this event is not just a great opportunity to support an Association that does so much to support its members but also to play one of the great golf course layouts in the country. So we hope to see you in Manchester-by-the-sea on September 23 and make sure to say hello to Eric and his staff! ❖

Essex Country Club



N.E.S.S.



Rick Moulton

Cell: 978-230-2244

email: rick@nesoils.com

Ed Downing

Cell: 978-230-2300

email: ed@nesoils.com

Office: 978-466-1844

Fax: 978-466-1882

**1mm. & 2mm. Top Dressing Sand
Rootzone Mixes • HD & Buff Bunker Sand
Divot Blends • Tee Mixes
Bridging Stone • Cart Path Mix • Soil Blend**

We will customize blends to meet your specific needs!



435 Lancaster Street, Leominster, MA 01453

Thoughts From Your Association Manager

The Summer 2013 issue of the *North Shore Golfer* has a nice feature about backyard putting greens. Affiliate Member Doug Preston, whose company, Southwest Greens of Boston, has installed many artificial greens in the area, was featured for his skill designing the layouts. Doug not only knows the business of custom putting green installations, but he can play the game at a high level. He was the Massachusetts Amateur Champion in 1994. You can read the article in the *North Shore Golfer* by [clicking here](#). Doug's company, Southwest Greens of Boston is also a Friend of the Association.

Dr. Joseph Troll, retired professor and mentor to many graduates of the Stockbridge School at the University of Massachusetts, has been elected to the Western Mass Golf Hall of Fame. This is a well deserved honor for Dr. Troll and he along with Tom DiRico, Director of Golf at Chicopee Country Club; Tracy Mehr past Mass Amateur Champion; Sue McLellan, well known and very accomplished golfer; Jackie Mattson, superb amateur player and superintendent at Wilbraham Country Club; Ron Letellier, outstanding amateur player and PGA of America Hall of Fame member; and Allan Mackintosh, 40 year head professional at Wilbraham Country Club will be inducted October 4, 2013. The ceremony will take place at the Tekoa Country Club in Westfield, MA. For more information about the day's event please visit Tekoa Country Club's website by [clicking here](#)

The UMass Turf Research Field day was held August 1, in South Deerfield at the Dr. Joseph Troll Turf Research Center. The overall turnout was good, but there was a scarcity of superintendents. It's a shame not more attend because the university staff spend many hours doing research, setting up the plots for viewing and presenting information of value. It was a first-rate event with a lot of information available for attendees.



L-R Dave Stowe, Steve Mann and Bruce Chapman comparing notes on turfgrass trials.

The PGA Championship played at Oak Hill Country Club in Rochester, NY showcased a beautiful and superbly conditioned golf course. Understandably, the emphasis was on the players and scoring but a morsel of sanity also came from the event. When Kerry Haigh, the person in charge of course set-up was asked about green speed, he gave an answer I wish had been seen and heard on the telecast. Unfortunately, it was at a press question-and-answer session where the following exchange took place:

Q. I want to know some numbers about green speed in the few days on this weekend, and can you talk about the big difference compared with the other three Majors, the course setups, the biggest difference?

KERRY HAIGH: The first question, I'm not sure the green speed?

Q. Can you tell some numbers of the green speed?

KERRY HAIGH: Championship speed. (Laughter).

Q. Can you tell me anything that you think it could be?

KERRY HAIGH: It's a speed that's appropriate to the greens that we feel is right. We don't give out a number. To be honest we don't think that's necessarily good for the overall country clubs out there; I don't. I think everyone hears a number and then everyone starts saying, well, we need it at this number. I think all clubs should set at a green speed that is appropriate for their play and the quality of their members and the slope of those greens. Throwing out numbers, I'm just not comfortable; so it's a green speed that is appropriate for a championship and the best players in the world.

The reality is it doesn't matter what the number is. If Kerry Haigh had said the greens were at 10 and an influential player thought they were at 12, what difference would it make? The player has to adjust his stroke for the speed that gets the ball in the hole! For those who have to post stimp-meter readings because the players at your club insist on it, have you ever asked any of them what happens in their mind when they see the posted number is lower or higher than they were expecting? I'd be curious to know how it affects their strategy for putting. ❖

By Don Hearn

Kevin Doyle - GCSAA Updates



Perhaps you have seen the emails floating around your inbox: "Volunteers needed!" Most of you probably just delete that one, right? Well, perhaps you might be willing to reconsider. In a year and a half in my new position, I have volunteered at four events, and am leaving in two days to make it five. Why do I volunteer you might ask? Well, I am almost

certain my reasons would be similar to yours when you break it down. For those of you that have worked on a staff hosting a large scale event or volunteered as part of one, I'd like to hear feedback if my assessment is off the mark. If you have never volunteered for an event, perhaps you might want to try after reading about it?

Why?

In short, why not! The facility, our colleague and often our friend, is looking to put its best foot forward, not just once, but for an extended period of time. Challenge the competitors, impress a world-wide audience, or attain member satisfaction, whatever the specific reason, achieving these lofty conditions take an immense amount of labor. Whether a facility operates with a crew of twenty or sixty, extra help is always needed. What kinds of tasks are needed to be done? Anything and everything are on the table, and the skill set can vary from simply filling divots, to walk-mowing or rolling greens. All duties are not the same. Fluffing rough

(standing up four inch rough around greens with a fan rake) can be a work-out, while towing a turbine to blow debris off fairways isn't exactly going to work up a sweat, so physical demands should not hold you back. The long and short of it is, when the tasks are complete and the first ball is struck to begin play, you have helped bring a facility as close to perfection as possible. That is a great feeling!

Who?

The volunteer staffs I have been with are a mix of affiliates, superintendents, assistants, interns and regular staff from courses near and far. Learning what happens inside the ropes to make events a success has great value, especially to students and assistants. Superintendents and affiliates can often use these opportunities to further build relationships. In short, anyone can benefit from volunteering.

Will Work for Food!

Probably a better way to phrase the above: What do I get out of it? They seem to feed the volunteers very well. Often, a uniform is part of the package, so a nice golf shirt or other swag might be part of the deal. Your volunteer badge allows access to the event, so you might see some of the best athletes competing at the highest level while you are there. Above all, I've found that it is fun! The business of perfection is extremely serious, but the conversation and interaction

continued on page 8

**TEE TO GREEN
SOIL SOLUTIONS**

- USGA Green Construction
- USGA Bunker Sand
- Tee Mix Materials
- USGA Fairway Topdressing Sands

read custom soils
888-475-5526

2014 UMASS Winter School

The perennial goal of the UMass Winter School for Turf Managers is to furnish turf managers with the concepts essential to the maintenance of high quality turf, while instilling a sense of environmental stewardship and fiscal responsibility. This highly acclaimed certificate program runs for seven weeks, beginning January 6, 2013 and concluding on February 21.

Winter School is especially suited for those who desire to take their career in turf management to the next level, but are unable to schedule a two or four-year degree program. Some Winter School students have several years of experience in the turf industry and simply want to sharpen their skills. At the same time, the course is appropriate for folks just getting started, and those who are seeking a career change.

Winter School provides 32 hours of intensive, expert instruction each week for 7 weeks, covering general turf management, pest management (insects, diseases, and weeds), turf physiology, personnel management, irrigation, and much more.

For complete information on the program and application materials, refer to:

<http://extension.umass.edu/turf/education/turf-winter-school>

GCSANE

Calendar of Events 2013

September 23

**Essex County Club
S & B Tournament**

September 25

**Wedgewood Country Club
Assistants meeting**

October 7

**The Ledges Golf Club
Monthly Meeting**

October 15

**Sterling Country Club
New England Supt. Champs**

October 23

**Black Rock Country Club
Pro/Super Championship**

November 4

**Milton-Hoosic Club
9-Hole Tournament**

The logo for Atlantic golf & turf features the word "Atlantic" in a large, bold, green, sans-serif font. To the left of the letter "A" is a stylized green grass tuft. Below "Atlantic", the words "golf & turf" are written in a smaller, green, cursive script font.

Airplane Etiquette

This isn't the kind of topic that comes to mind when thinking of etiquette but I think you'll realize when you read about it, there's a lot of consideration of others needed to make a flight pleasant.

When traveling by air, you're sometimes forced to rub elbows (literally) with people you don't know. In close quarters and for extended periods of time, a little consideration can go a long way. To make a flight as smooth as possible for both yourself and others (and to avoid dirty looks) you might find the following tips helpful.

Carry your bag in front of you and low to the ground as you walk down the aisle in search of your seat. Holding it up and at your sides will inevitably bump seated passengers on their arms, shoulders, and heads. You can pull it along if it has wheels.

Utilize the overhead space above your own seat row. Don't place your bags in the overhead bins at the front of the plane unless you are sitting in that row. Don't put your bag in a bin near the front of the plane for a quick exit -- it means someone else will have to wait until the entire plane has emptied to walk back to get his or her bag. Taking the storage space of other passengers is rude and can potentially delay departure as they search for storage.

Keep your chair upright at least until you're told it can be reclined. Don't lean your chair back as soon as you get on. When you do recline your chair, do it *slowly*. Otherwise, you risk bumping the head of the unsuspecting passenger behind you who's getting something from the bag at her feet, or you could knock over the drink on his or her tray. Remember to return the seat back to the upright position during meal and drink servings, or if possible, wait until food and beverages are finished being served and cleaned up.

- Check behind you—is that person tall, or do they have a child on their lap? If so, consider keeping your seat upright out of consideration, especially if it's a short flight. By reclining, you're taking space away from the passenger behind you; you may be more comfortable, but at someone else's expense. You can also ask them if reclining your seat would be all right. If you're someone who can't make yourself comfortable without reclining, then try to choose a bulkhead, or exit row seat when booking the flight so the person behind you has extra space.
- If you are traveling with one or more children, keep a close eye on them. Children have a tendency to bump, kick, or yank the seat in front of them without realizing it throughout the flight, which can make the person in front of them very uncomfortable. It's difficult enough to con-

continued on page 9

Discover MTE Platinum Equipment

Better than used. Feels like new.

Sure, you can risk your money buying someone's old equipment, or you can invest in an MTE Platinum machine - recent-model, pre-owned equipment that's reconditioned from the frame up.

Imagine a proven model - a 2008 Jacobsen GKIV+ or LF-3400 - that's undergone a rigorous 60-point overhaul and inspection by our factory-trained and certified technicians - everything from the engine, to hydraulic system, to cutting units, to paint job. Platinum machines are like-new units with real value. And they're just one of our smart, budget-friendly options.

Discover yours today:



Eastern MA

Mark Casey

617-990-2427

mcasey@mte.us.com

Western MA, VT

Matt Lapinski

978-551-0093

mlapinski@mte.us.com

NH, Maine

Bob Doran

207-653-5750

bdoran@mte.us.com

online at: www.mte.us.com

JACOBSEN
A Textron Company

When Performance Matters™

MTE
Turf Equipment Solutions.

with your peers can make for a very enjoyable experience. This year was a particularly busy year in the Northeast region for large-scale events. The need for volunteers was greater this year with the U.S. Amateur, U.S. Open, U.S. Women's Open, Walker Cup, and PGA Championship all making appearances in the area. If you didn't have the chance to get inside the ropes there, there are many annual opportunities as well with the Deutsche Bank Championship, The Barclay's, Dick's Sporting Goods Open as well as others. If you have volunteered in the past, I hope you have found it as rewarding as I have and will consider lending a hand again. If you have never stepped to the plate to help out, I recommend you try it. You never know what golfers might do when you put a collection of superintendents together in search of perfection....possibly make history!

GCSAA Resources and Deadlines

Hopefully, this section will serve as a reminder of benefits you receive already but forgot, or highlight new benefits beyond the award winning magazine you already receive!

YouGet

Cool

Stuff

Already from your

Association

All eligible members are automatically enrolled into the dues term life insurance group policy at no additional cost! Benefits range from \$1000-10,000 depending on the age of the member. For specifics on this member benefit visit GCSAA.org and click on "Membership & Benefits" near the top of the page. Be sure to visit if you need to update your beneficiary.

Housing Open:

Housing for the 2014 Conference and Show in Orlando is now open! Reserve your housing early before they fill up. Details, including changes to the 2014 show and highlights from 2013 can be found [here](#).

The Melrose Leadership Academy

The Academy supports the professional development of GCSAA member superintendents by providing individuals the opportunity to attend the GCSAA Education Conference and Golf Industry Show. The program is set up to provide up to 20 scholarships every year. The academy is open to applicants who meet the following eligibility requirements:

- Must be a GCSAA Class A member and have been for five or more years
- Have not attended the education conference in the past five years or more

Grant recipients will receive the following:

- GCSAA Education Conference and Golf Industry Show full package registration
- Education seminars and leadership sessions
- Airfare
- Four nights' hotel accommodations
- \$200 spending money

Following the conference and show, grant recipients will continue to receive communications recommending education, tools and resources offered by GCSAA to keep class participants engaged.

Deadline to apply is **September 15th**, and details are linked [here](#).

Bayer Plant Health Scholarship

Two Class A and superintendent members of GCSAA will each receive a \$2,500 award for continuing education in the area of plant health. The award can be used in the following ways:

- Toward costs for continuing education at an institution of higher learning. A check will be issued to both the scholarship recipient and the institution.
- Toward costs for attending a local, regional or national educational conference or workshop for the purpose of continuing education. The award check will not have taxes withheld for federal or state purposes. Recipients choosing this option will receive Form 1099 from GCSAA in 2014 stating the value of the package based on actual costs, which they will report as other income for 2013. Please consult a tax adviser with any questions.

Application deadline is October 4th, and more information can be found [here](#).

Very Important FREE Webcast!!!!

Hazard Communication, the Globally Harmonized System & Your Golf Course:

As I have communicated to many of you, the MSDS system as we know it now is GOING AWAY! Join Kathy Landkrohn, OSHA health scientist, for this 90-minute webcast designed to answer many of the questions OSHA has received in this first year of Hazard Communication 2012 implementation. This valuable webcast has already taken place, but is archived and viewable by members FREE OF CHARGE. Follow [this link](#) for more information, and access to the archived webcast.

Excellence in Government Relations Award

Nominations for the 2014 EGR Award are open through Oct. 15, 2013. For more information about the award, or how to nominate, visit GCSAA's website [here](#).

Again, if I can be of any assistance, please feel free to contact me. ❖

Kevin Doyle

GCSAA Field Staff

kdoyle@gcsaa.org

Follow me on Twitter @GCSAA_NE

trol some children on a long flight, but it's even more difficult to deal with an angry passenger in front of you. If your child has difficulty flying, do everything you can to relax the child so you do not disturb other passengers near by. Change diapers in the restroom on the plane. In most restrooms there are changing tables and trash bins for diaper disposal. Recently I was on a flight where the parent of a child changed its diaper in the seat. Nice!

- If another passenger breaches etiquette by, for example, constantly thumping or yanking your seat back, and refuses your polite request not to do so, don't get any further involved. Ask a flight attendant to handle the situation, and if they can't or even won't (this does happen), ask politely but insistently for the chief flight attendant (purser) to handle it.
- *Avoid grabbing the back of the seat in front of you.* Grabbing the seatback as you walk in the aisle or in your row, can be unpleasantly jarring to the person sitting in it. Copy the flight attendants who balance themselves in the aisle by grabbing the luggage compartments above their heads, rather than the seat backs.

Respect personal space.

- No matter how much you love to make new friends on the plane, the person next to you might rather get some work done, or simply may not feel like being chatty. If a friendly comment gets a minimal answer, take the hint and leave them be. If you're traveling with children, try to avoid letting them think of passengers as playmates. Some passengers will smile to be polite, but may not be interested in playing "peek a boo" with your child.
- If you want to watch a movie on your personal DVD player, keep in mind your screen is visible to those behind you. If your movie has nudity, graphic violence, etc. it may offend the more sensitive viewers (e.g. children) looking on. Using a smaller, handheld device to view movies, such as on an iPod Touch, may be more practical in this situation.
- Watch your elbows. If you're reading a newspaper or using a laptop, try not to let your elbows "spill over" onto someone else's personal space. Do your best not to hog the arm rests, especially if the person next to you is in the middle and has limited space to begin with.
- Make use of your own arm rest and headphone plug outlet. Don't use someone else's because it's more convenient for you.
- Keep your stuff close. If you put a bag or a jacket at your feet, don't let it spill over onto the legs or feet of the person sitting next to you.
- If you're stuck in an aisle seat but still want to enjoy the view, *don't* lean over the person next to you to look out the window.
- Get your own reading material-- don't read theirs. They'll notice, and it's nosy and rude.
- Pack headphones for any portable

electronics, especially games and DVD players. Hearing someone else's music and sounds can be very irritating.

Avoid hogging the aisle. Remember that space is limited on board. Always be swift and alert while putting things in the overhead bins, as other people need the aisle space to get around you and to their seat. Place the items that you will frequently use in your seat back pocket or under the seat in front of you. Get up to use the lavatory or to walk around only when necessary. Go through your carry-on luggage at intervals. If you need something, think ahead and retrieve items you might need later on during the flight.

- When you get up, don't yank on the seat in front of you for support; use the seat armrests.
- If you want to get up but there is one or more passengers between you and the aisle, politely request that they get up to let you pass. Don't try to clamber over them; apart from the discomfort this will inevitably cause, you might injure yourself or them if you lose your balance and fall.

Be considerate of other passengers when you exit the plane. Resist the urge to push your way out first; let those nearest the exit disembark the plane first. When your turn comes, move quickly so people with connecting flights can make it in time.

- Take care when retrieving luggage from the overhead compartment! It may be positioned to fall on you or someone else.
- If you have a lot of bulky, heavy luggage in the overhead bin, wait until others have left before standing and blocking other people from leaving the plane (they may have another flight to get to), or ask somebody to help you get your luggage down while everybody is waiting to leave the plane. This will help with traffic flow and allows all passengers to leave the plane as fast as possible.
- If you know you'll need a connecting flight, think ahead and book your flight early so you can get a seat up front and exit quickly.

By Don Hearn

693 SOUTH COUNTY TRAIL, EXETER, R.I.

ALLEN'S SEED

401-294-2722 1-800-527-3898

**PROFESSIONAL TURF SUPPLIES,
EQUIPMENT, PARTS & SERVICE**

Total Solutions

For over 40 years, Turf Products continues to be the single source supplier for all your irrigation and turf management equipment, delivering superior quality and unmatched customer service to the golf industry.



turf products



From drainage pipe to chainsaws
TPC can supply all your golf course needs.
Pond aerators, ball washers, soil sensors and
lightning detectors are just a few of the
thousands of items we carry.

For All Equipment & Irrigation:
PARTS DIRECT: (800) 296-7442
Email: partsdept@turfproductscorp.com
SERVICE DIRECT: (800) 442-9910
Email: servicedept@turfproductscorp.com
MAIN OFFICE: (800) 243-4355
www.turfproductscorp.com



Friend and Affiliate Members of the GCSA of New England

FROM: GCSA of New England Scholarship and Benevolence Committee

SUBJECT: Tournament Sponsorship and Membership Participation

The Golf Course Superintendents Association of New England Scholarship and Benevolence Committee is seeking the financial support of your business for this year's S&B Tournament being held Monday, September 23, at the Essex County Club.

The S&B Fund has awarded more than \$235,000 in aid to Superintendent, Friend and Affiliate members and their families since its inception in 1993. This tournament, your donations and the sale of raffle tickets are the only source of revenue for this worthy cause. If you or your company donated last year, could you possibly match or exceed that in 2013? If you did not make a donation in the past would you consider doing so this year? Sponsorship levels have been established in the following increments:

**Premier \$2000 includes Foursome
Gold \$1500 includes Twosome
Silver \$1000
Bronze \$100-500**

You or your company may also receive a follow-up phone call from a committee member regarding this letter. Further information regarding this year's event will be released soon in a mailing and on the GCSA of New England's website.

We are asking all members to show support and participate in this event by a combination of the following:

Playing in the event
Buying/Selling raffle tickets for rounds of golf
Provide corporate seats to sporting events, airline tickets, etc.
Volunteer time at registration
Send donations directly to the fund

**Donations may be mailed to:
Don Hearn, Association Manager
GCSA of New England
300 Arnold Palmer Blvd.
Norton, MA 02766**

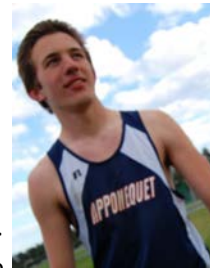
Thank you in advance for your support and we hope you will participate, as the Scholarship & Benevolence Fund is an important benefit to all members in need.

Sincerely,
David A. Stowe, CGCS
Chairman, Scholarship & Benevolence Committee

3rd Annual GREG'S RUN 5K - October 5, 2013

To benefit the Gregory G. Misodoulakis Memorial Scholarship

Website: www.gregsrn.org E-Mail: gregsrn10@gmail.com



The 3rd Annual *Greg's Run 5K* will be held on Saturday, October 5, 2013 at 10:00 am at Apponequet Regional High School (ARHS). This run/walk event will benefit the **Gregory G. Misodoulakis Memorial Scholarship**, established by his family to honor the memory of 2010 Apponequet Regional High School graduate Gregory Misodoulakis. Greg died unexpectedly a few days prior to beginning his freshmen year at UMass Amherst. The financial and in-kind support of local businesses and community members is vital to ensure the success of this event.

Since 2011, eight scholarships totaling \$7,500 have been awarded to Apponequet Regional High School graduates. It is our hope to award Greg's scholarship to deserving ARHS graduating seniors for years to come. Proceeds from this annual 5K fundraising road race will be put towards his scholarship which is managed by the Community Foundation of Southeastern Massachusetts, a **501(c)(3)** tax exempt public charity.

Please join us in making the *3rd Annual Greg's Run 5K* a memorable event that benefits current and future students of the Freetown and Lakeville communities. Any donations -- monetary, post-race refreshments or raffle prizes -- would be greatly appreciated. Attached you will find information about corporate and individual sponsorship opportunities. All sponsors will be listed according to their sponsorship level on the race webpage www.gregsrn.org and will be recognized during race day activities. Sponsors may set up a display table the day of the event and distribute promotional materials (if desired). Sponsors may also display a banner or logo at the event.

The deadline to guarantee sponsorship recognition on the race website and printed materials is September 14, 2013.

We are proud to support the **3rd Annual Greg's Run 5k Race** to benefit the **Gregory G. Misodoulakis Memorial Scholarship**. We are requesting our corporate name on all materials consistent with our sponsorship level below:

___ \$200 (corporate name listed on T-Shirt, subject to printing deadline)

___ \$100 (corporate name displayed at kilometer marker or water table)

___ Friends of Greg (donations under \$100, to be listed on website and noted on Race Day)

___ In-Kind Sponsor (raffle prizes, refreshments, other)

Name: _____ Company: _____

Address: _____

Phone: _____ Email: _____

The deadline to guarantee sponsorship recognition on the race website and printed materials is September 14, 2013.
Please return this form and make checks payable to GGMMS: Greg's Run, c/o Kristine Donnelly, 19 Brookstone Drive, Lakeville, MA 02347 (508) 947-7126

*Please include your name, company name, address, phone number and email with your donation so that we can give proper recognition to all our sponsors.

ANNOUNCEMENTS

Welcome New Members:

- **Helena Chemical Company**, Friend
- **Lou Bettencourt, CGCS**, Affiliate with Helena Chemical Company
- **Hartney Greymont**, Friend
- **Michael Colman**, Affiliate with Hartney Greymont
- **William J. Burke III**, Assistant, Bass Rocks Golf Club

Our condolences are extended to Steve Carr and family on the passing of Steve's father, William T. "Bill" Carr, who passed away on July 31, 2013. Steve Carr is the superintendent at the Pocasset Golf Club.

Our condolences are extended to Ed Gianni and family on the passing of Ed's father, Angelo Gianni, who passed away on August 3, 2013. Ed Gianni is the superintendent of the Country Club of Halifax.

Best wishes on a speedy recovery to Steve Murphy, superintendent at Gannon Golf Club, who is recuperating from rotator cuff surgery.

Wishing a speedy recovery to retired member Orrin Ellis who is recuperating from back surgery.

Best wishes to retired member Manny Francis, Sr. who is recovering from Lyme disease.

As in the past, *The Newsletter* continues to invite Affiliate members to submit a press release about new personnel, new products or a company bio. We will print each and every release **free of charge**. This is a great way to advertise for free. Who said nothing in this world is free? Free advertising to better your company, wow what an offer.

Golf Results - August 26 - Marlborough CC Superintendent Championship

Superintendent Division:

Gross: Patrick Van Vleck 80
Net: Russ Heller 74

Affiliate Division:

Gross: John Winskowicz 73
Net: Dennis Friel 70

Retired Division:

Gross: Mike Hermanson 91
Net: Joe Rybka 75



From L-R: Scott Hermanson and his dad Mike Hermanson with the US Amateur Trophy. Scott works for Bill Spence, Superintendent at The Country Club who hosted the event this year.



GCSANE Offers Website Banner advertising at www.gcsane.org

The price is \$500 for one year which will be re-occurring annually from your first billing unless otherwise specified.

For more information, please contact Jeff Urquhart at 781-828-2953 or jmartin101@gmail.com

Please Patronize these FRIENDS of the ASSOCIATION

Page 1

A.A. Will Materials Corp.

198 Washington St., Stoughton, MA 02072-1748
Root zone mixes, divot mixes, topdressing blends, bunker sands,
cart path mixes, bridging stone, & hardscape supplies.
Rob Fitzpatrick - (800) 4-AA-WILL
www.aawillmaterials.com

Agresource, Inc.

100 Main St., Amesbury, MA 01913
Tim Gould, Guy Travers (800) 313-3320, (978) 388-5110

Agrium Advanced Technologies Direct Solutions

Suppliers of Chemicals, Fertilizer, and Grass Seed
Jim Pritchard 401-259-8-5472 jpritchard@agriumat.com
Glenn Larrabee 401-258-3762 glarrabee@agriumat.com

Allen's Seed

693 S. County Trail, Exeter, RI 02822
Specializing in quality seed, fertilizer, chemicals, and related golf
course maintenance supplies.
Michelle Maltais (401) 835-0287 Peter Lund (401) 474-8171
www.allensseed.com

Atlantic Golf and Turf

9 Industrial Boulevard, Turners Falls, MA 01376
Specializing in agronomy through the distribution of fertilizer, seed
and chemicals throughout New England.
Chris Cowan (413) 530-5040, Gregg Mackintosh (508) 525-5142,
Scott Mackintosh CPAg (774) 551-6083

A-OK Turf Equipment Inc.

1357 Main St., Coventry, RI 02816-8435
Lastec, Tycrop, Blec, Wiedenmann, Therrien, Graden, Sweep
& Fill, Baroness, and used equipment.
Mike Cornicelli - (401) 826-2584

Barenbrug USA

Great in Grass
10549 Hammond Hill Road, East Otto, NY 14729
Bruce Chapman, Territory Manager (401) 578-2300

BASF Turf & Ornamental

47 Falmouth Rd., Longmeadow, MA 01106
"We don't make the turf. We make it better."
John Bresnahan - (413) 565-5340

BACKED by BAYER

Building on an already solid foundation of proven products to help
you succeed. Brian Giblin 508-439-9809 brian@bayer.com
www.backedbybayer.com

Boston Irrigation Supply Co. (BISCO)

60 Stergis Way, Dedham, MA 02026
New England's single source for a complete line of irrigation and
pumping equipment featuring Rain Bird, plus landscape lighting,
drainage, tools and all related accessories. www.gobisco.com
Andrew Langlois, Jay Anderson III, Dan Fuller, Jeff Brown, Greg
Hennessy, Chris Russo (800) 225-8006

The Cardinals, Inc.

166 River Rd., PO Box 520, Unionville, CT 06085
Golf course and landscape supplies.
John Callahan, Dennis Friel - (800) 861-6256

Cavicchio Landscape Supply, Inc.

110 Codjer Lane, Sudbury, MA 01776
Annuals, perennials, garden mums, ground covers, loam, & mulch.
Darren Young - (978) 443-7177

Charles C. Hart Seed Co., Inc.

304 Main St., Wethersfield, CT 06109
Authorized distributor for Bayer, Syngenta, Grigg Brothers foliar
fertilizers, and Aquatrols. Specializing in custom seed blends.
Robin Hayes 508-237-2642 Dick Gurski 413-531-2906
Mike Carignan 603-540-2562

Country Club Enterprises

PO Box 670, 29 Tobey Rd., W. Wareham, MA 02676
Club Car golf cars, Carryall utility vehicles.
Dave Farina, Keith Tortorella, Mike Turner (800) 662-2585

DAF Services, Inc.

20 Lawnacre Rd., Windsor Locks, CT 06096
Provider of prefabricated pump stations and water management
systems. Richard Young - (860) 623-5207

DGM Systems

153A Foster Center Road, Foster, RI 02825
Your New England specialty products distributor: Reelcraft, POK,
Allen, Kenyon, Echo, Carhartt Office - (401) 647-0550
Manny Mihailides - (401) 524-8999
David Mihailides - (401) 742-1177

DHT Golf Services

8 Meadow Park Road, Plymouth, MA 02360
Serving the GCSANE for over 20 years. Planning to proposal to
completion. Golf construction and irrigation consulting.
Emergency irrigation repairs. Dahn Tibbett (20 year member),
Jaime Tibbett 508-746-3222 DHTGOLF.COM

G. Fialkosky Lawn Sprinklers

PO Box 600645., Newton, MA 02460
Irrigation services to golf courses throughout New England.
Gary Fialkosky - (617) 293-8632
www.garyfialkoskylawnsprinklers.com

Harrell's LLC

19 Technology Drive, Auburn, MA 01501
Turf & Ornamental supplies. Chuck Bramhall, Mike Kroian,
Mike Nagle - (800) 228-6656

Hartney Greymont

433 Chestnut Street, Needham, MA 02492
www.hartney.com
Hartney Greymont is a company that specializes in tree care, land-
scape services, strategic woodland management and plant health-
care. Michael Colman (781) 727-7025

Helena Chemical Company

101 Elm Street, Hatfield, MA 01038
www.helenachemical.com
National distributors of all your turf chemicals and fertilizers.
Extensive line of Helena Branded wetting agents, foliars,
micronutrients and adjuvants.
Louis Bettencourt, CGCS (978) 580-8166

continued on next page

Please Patronize these FRIENDS of the ASSOCIATION

Hillcrest Turf Services

P.O. Box 767, Medfield, MA 02052
Mike Parks 617-852-0479
Providing specialty cultural services to golf courses and sports turf.

International Golf Construction Co.

5 Purcell Rd., Arlington, MA 02474
Golf course construction. Antonios Paganis - (781) 648-2351;
(508) 428-3022

Irrigation Management & Services

21 Lakeview Ave., Natick, MA 01760
Irrigation consultation, design, and system evaluation.
Bob Healey, ASIC, CID - (508) 653-0625

John Deere Golf

Offering our customers the most complete line of products, service and expertise in the industry.
John Winskowicz - (978) 471-8351
Ron Tumiski 1-800-321-5325 x6219

Ken Jones Tire, Inc.

71-73 Chandler St., Worcester, MA 01613
Distributor of tires for lawn & garden, trucks, cars, industrial equipment, and golf cars. Gerry Jones - (508) 755-5255

Larchmont Engineering & Irrigation

11 Larchmont Lane, Lexington, MA 02420-4483
Kevin Rudat - (781) 862-2550

Lazaro's Golf Course Supplies & Accessories

dba Hammond Paint and Chemical Co., Inc.
738 Main St., Suite 223, Waltham, MA 02154
Complete line of golf course accessories; Standard, Par Aide, Eagle One. Joe Lazaro - (781) 647-3361

Maher Services

71 Concord Street, N. Reading, MA 01864
Specializes in Water well drilling, pump sales, pump repair, well redevelopment and preventative maintenance
Peter Maher cell: (781) 953-8167 or (978) 664-WELL (9355)
Fax (978) 664-9356 www.maherserv.com

MAS Golf Course Construction LLC

60 Hope Ave., Ste. 107, Waltham, MA 02453
Fulfilling all your renovation and construction needs.
www.masgolfconstruction.com Matthew Staffieri (508) 243-2443

Maltby & Company

30 Old Page Street, P.O. Box 364, Stoughton, MA 02072
Provides expert tree pruning, tree removal and tree planting services. Our two other divisions include Natural Tree & Lawn Care, which treats for winter moth caterpillars, ticks and mosquitoes etc. Forest Floor recycling manufactures color enhanced mulch and natural composted leaf mulch. For more information or to speak with one of our arborists please call Bill Maltby at 781-344-3900

Matrix Turf Solutions

29 Gilmore Drive - Unit C, Sutton, MA 01590
Providing the finest turf care products and accessories.
Jim Favreau - (978) 815-9810 - Larry Anshewitz - (508) 789-4810
www.matrixturf.com

Mayer Tree Service

9 Scots Way, Essex, MA 01929
Your one source tree care company. Our certified arborists specialize in plant health care as well as tree pruning and technical removals. Jeff Thomas (978) 768-7232

McNulty Construction Corp.

P. O. Box 3218, Framingham, MA 01705
Asphalt paving of cart paths, walkways, parking areas; imprinted asphalt. John McNulty - (508) 879-8875

MTE, Inc. – Turf Equipment Solutions

118 Lumber Lane, Tewksbury, MA 01864
New England's source for equipment sales, service and parts. New and pre-owned mowers, tractors, attachments and much more from: Jacobsen, Turfco, Smithco, Ventrac, Redexim, Neary Grinders, Ryan, Buffalo Turbine, Mahindra, Husqvarna, Gravely, Standard, Par-Aide and others. Office: 978-654-4240.
Mark Casey: 617-990-2427. Matt Lapinski: 978-551-0093

Mungeam Cornish Golf Design, Inc.

195 SW Main Street, Douglas, MA 01516
Golf course architects
Office: 508-476-5630
Cell: 508-873-0103
Email: info@mcgolfdesign.com
Contact: Mark A. Mungeam, ASGCA
www.mcgolfdesign.com

New England Lawn & Golf

15 Del Prete Drive, Hingham, MA 02043
Distributor of Express Dual and Anglemaster Speed Roller and Converted Organics a liquid compost & fertilizer from food waste
John Lenhart - (781) 561-5687

New England Specialty Soils

435 Lancaster, Street, Leominster, MA 01453
1mm. Top Dressing Sand, High Density Bunker Sand, Rootzone Mixes, Tee Blends, Divot Mixes, Bridging Stone, Cart Path Mix, Infield Mixes, Inorganic Amendments, SLOPE LOCK Soil.
Ed Downing - 978-230-2300 Rick Moulton (978) 230-2244
www.nesoils.com

New England Turf

P.O. Box 777, West Kingston, RI 02892
Phone: 800-451-2900 or Ernie Ketchum 508-364-4428;
Mike Brown (508) 272-1827
Website: www.newenglandturf.com

NMP Golf Construction Corp.

25 Bishop Ave., Ste. A-2, Williston, VT 05495
Golf course construction. Mario Poirier - (888) 707-0787

Northeast Golf Company

Golf Course Architectural/Consultation Services
118 Beauchamp Drive, Saunderstown, RI 02874
Robert McNeil (401) 667-4994

Northeast Nursery Inc.

6 Dearborn Road, Peabody, MA 01960
Complete line of Golf Course, Landscape & Lawn Care Construction and Maintenance Supplies
Tom Rowell (978) 317-0673

continued on next page

Please Patronize these FRIENDS of the ASSOCIATION

North Shore Hydroseeding

20 Wenham St., Danvers, MA 01923
Hydroseeding and erosion control services.
Brian King - (978) 762-8737 www.nshydro.com

On-Course Golf Inc., Design/Build

16 Maple Street, Acton, MA 01720
We serve all your remodeling and renovation needs. You can trust your project with us! We make you look good!
Sean Hanley (978) 337-6661 www.on-coursegolf.com

Putnam Pipe Corp.

90 Elm St., Hopkinton, MA 01748
Underground water, sewer, & drain pipe and fittings-Erosion and sediment control material. 24-hour service.
David Putnam, Eli Potty - (508) 435-3090

Read Custom Soils

125 Turnpike St., Canton, MA 02021
Custom soil blending, top dressing sands, Root zone blends, "early green" black sand, divot & cart path mixes.
Terry Driscoll, Garrett Whitney - (888) 475-5526

Slater Farms (Holliston Sand Products)

P. O. Box 1168, Tift Rd., Slatersville, RI 02876
USGA recommended topdressing, root-zone mixes, compost, pea stone, angular & traditional bunker sand.
Bob Chalifour, CGCS (Ret.) - (401) 766-5010 Cell: 860-908-7414

Sodco Inc.

P. O. Box 2, Slocum, RI 02877
Bluegrass/Fescue, Bluegrass/Rye, Bluegrass/Fescue/Rye, Bentgrass. Sean Moran, Pat Hogan - (800) 341-6900

Southwest Putting Greens of Boston

P.O. Box 827, Westford, MA 01886
Synthetic turf, tee lines, practice greens, outdoor and indoor practice facilities. Douglas Preston - (978) 250-5996

Stumps Are Us Inc.

Manchester, NH
Professional stump chipping service.
Brendan McQuade - (603) 625-4165

Syngenta Professional Products

111 Craigmere Circle, Avon, CT 06001
Melissa Gugliotti (860) 221-5712

Tartan Farms, LLC

P.O. Box 983, West Kingston, RI 02892
Dave Wallace
(401) 641-0306

Tom Irwin Inc.

11 A St., Burlington, MA 01803
Turf management products. Paul Skafas, Rob Larson, Chris Petersen, Greg Misodoulakis, Mike DeForge, Brian Luccini, Jeff Houde, Fred Murray (800) 582-5959

Tree Tech, Inc.

6 Springbrook Rd., Foxboro, MA 02035
Foxboro, Wellesley, Fall River Andy Felix - (508) 543-5644
Full service tree service specializing in zero impact tree removal, stump grinding, tree pruning and tree risk assessments by our team of Certified Arborists.

Tuckahoe Turf Farms, Inc.

P. O. Box 167, Wood River Junction, RI 02894
Joe Farina (774) 260-0093

Turf Products Corp.

157 Moody Rd., Enfield, CT 06082
Distributors of Toro irrigation & maintenance equipment and other golf-related products. Tim Berge, Dave Beauvais, Nat Binns, Andy Melone - (800) 243-4355

Valley Green

14 Copper Beech Drive, Kingston, MA 02364
Phone: 413-533-0726 Fax: 413-533-0792
"Wholesale distributor of turf products"

Winding Brook Turf Farm

Wethersfield, CT 06109
Scott Wheeler, Mike Krudwig, Sam Morgan - (800) 243-0232

NEW Lower Rates to Help Make Advertising in The Newsletter More Budget Conscious

THE NEWSLETTER 2013 DISPLAY ADVERTISING ORDER FORM

Company Name: _____

Address: _____

Contact Name: _____ Phone # _____

Issues (List month and total number): _____

Amount of Check: _____ (Made payable to "GCSANE")

<u>Member Rates:</u>	Monthly Rate	4 Times Per Yr. (Save 5%)	6 Times Per Yr. (Save 10%)	8 Times Per Yr. (Save 10%)	Annual Rate (Save 15%)
<input type="checkbox"/> 1/4 page (vertical; 3.75" wide x 5" deep)	<input type="checkbox"/> \$ 90.00	<input type="checkbox"/> \$ 342.00	<input type="checkbox"/> \$ 486.00	<input type="checkbox"/> \$ 648.00	<input type="checkbox"/> \$ 918.00
<input type="checkbox"/> 1/2 page (horizontal; 7.5" wide x 5" deep)	<input type="checkbox"/> \$150.00	<input type="checkbox"/> \$ 570.00	<input type="checkbox"/> \$ 810.00	<input type="checkbox"/> \$1080.00	<input type="checkbox"/> \$1530.00
<input type="checkbox"/> Full Page (vertical; 7.5" wide x 10" deep)	<input type="checkbox"/> \$200.00	<input type="checkbox"/> \$ 760.00	<input type="checkbox"/> \$1080.00	<input type="checkbox"/> \$1440.00	<input type="checkbox"/> \$2040.00

Non-Member Rates: *All payments must be received in full before the ad appears in The Newsletter.

<input type="checkbox"/> 1/4 page (vertical; 3.75" wide x 5" deep)	<input type="checkbox"/> \$120.00	<input type="checkbox"/> \$456.00	<input type="checkbox"/> \$648.00	<input type="checkbox"/> \$ 864.00	<input type="checkbox"/> \$1224.00
<input type="checkbox"/> 1/2 page (horizontal; 7.5" wide x 5" deep)	<input type="checkbox"/> \$180.00	<input type="checkbox"/> \$684.00	<input type="checkbox"/> \$972.00	<input type="checkbox"/> \$1296.00	<input type="checkbox"/> \$1836.00
<input type="checkbox"/> Full Page (vertical; 7.5" wide x 10" deep)	<input type="checkbox"/> \$240.00	<input type="checkbox"/> \$912.00	<input type="checkbox"/> \$1296.00	<input type="checkbox"/> \$1728.00	<input type="checkbox"/> \$2448.00

***DEADLINE for ads: The first of the month for that month's issue.**

Ad Preparation Specifications:

File Specifications for Ads Supplied in Digital Format: Ads may be sent either by email or by mailing a CD to the address below. Formats preferred are .GIF; .JPG and .PDF. Ads can also be accepted in Microsoft Word or Microsoft Publisher files. Full color is available with all ads.

Advertising Design Services: Design services are available by request and consultation and will be billed separately.

Send all Newsletter ads to:

Julie Heston

36 Elisha Mathewson Road, N. Scituate, RI 02857

Phone: 401-934-7660 / Fax: 401-934-9901

jheston@verizon.net