



# ON THE CAMPUS

## Michigan State College

Michigan State College  
of Agriculture and Applied Science  
East Lansing, Michigan

ON THE CAMPUS  
AT  
MICHIGAN STATE



MICHIGAN STATE COLLEGE  
OF AGRICULTURE AND APPLIED SCIENCE  
EAST LANSING, MICHIGAN

*C*OLLEGE trained men enter business life later than those individuals who go into the world of trade immediately after graduation from high school, but many surveys have shown that the earning power of the college graduate rapidly overtakes and exceeds the earning power of men who have not had college training.

## A COLLEGE OPPORTUNITY



HOICE of the particular institution in which he is to seek a college education is a serious question with the high school graduate.

He looks for surroundings which will approach the ideal in a college community. He looks for the course of study which will fit him best for a life career. He asks for complete and modern facilities to make possible the utmost efficiency in educational methods, and for a faculty made up of teachers who are both scholars and leaders. He inquires as to the opportunities for student activities outside the classroom—for enjoying to the full “student life” in its broad scope. In short, he demands an institution with the strength and prestige to give the greatest possible value to his diploma upon graduation.

These requirements of the prospective student are fully met by the Michigan State College.

Founded nearly three-quarters of a century ago, the first college of its kind in the world, the college has kept its position of leadership throughout the years and stands today a great state university, offering the very best of educational opportunities to young men and women. Strongly financed, completely equipped, and soundly organized, Michigan State College enjoys an enviable position among the leading colleges and universities of the country.

While agriculture was the first course of study established, and the one from which the college took its name for many years, the work of the institution has grown and expanded during the years until today we find six major divisions offering courses of study suited to the demands of practically every prospective college student.

The major divisions include Agriculture, Engineering, Home Economics, Veterinary Medicine, Applied Science, and Liberal Arts. Courses in business administration, medical biology, hotel training, physical education for both men and women, and a five year course in combined home economics and nursing offer special professional training.

In order that the name of the college might more fully represent the breadth of work offered in the various courses, the name was changed on May 13, 1925, from “Michigan Agricultural College” to the “Michigan State College of Agriculture and Applied Science.”

The young man or woman who desires a technical education can get it in one of the older divisions, while he who seeks a more



general education, in preparation for business or professional career of less highly specialized nature, can find work exactly suited to his needs in the courses of Applied Science and Liberal Arts.

The faculty of the college is not only large in numbers, including nearly three hundred professors and instructors in the various departments, but is also characterized by the training and ability of its members. Sound scholars and able teachers, the men and women who compose the instructional staff at Michigan State College provide the inspiration and leadership which make up so important a part of the deep and lasting training a student carries with him from the college campus. Relationships between the teacher and the student at M. S. C. are marked by the friendly attitude of mutual respect with which the two groups meet, both in and out of the classroom.

The Michigan State College is unusually well supplied with the physical equipment necessary to carry on its work. More than sixty buildings, many of them new and containing the most modern and complete educational facilities, house the various divisions of the college.

Among the latest units completed in the college building program are a Library, a Home Economics building, a Union building, a Horticultural building, a Chemistry building, an Armory and field house, and a Memorial Tower—a group of unusually fine structures constructed at a cost of approximately three million dollars. In addition, the plan which calls for the grouping of all barns on the college farms, across the river from the main campus, is well under way with the completion of new horse and dairy barns which are model additions to the equipment of the agricultural division.

Major structures among the somewhat older group are buildings of which the college is justly proud. The Gymnasium is one of the largest and best college athletic plants in the country. The Agricultural Building, the Engineering Building and Shops, and, in fact, all other buildings of the campus group contain the most modern and complete equipment for laboratory and classroom work.

These things are important in that they guarantee all State College students the best in educational facilities.

Outside the classroom, a broad field of campus activities offers opportunities for every student. A complete program of inter-collegiate athletics is supplemented by inter-class and inter-fraternity games in practically all sports, a plan which brings hundreds of men and women students into actual competitive

play. Expert coaches train all Varsity teams and handle the intra-mural games.

Dramatics, music, journalism, debating—to name but a few of the many organized activities—are highly developed and offer training and experience of untold value to the college man and woman.

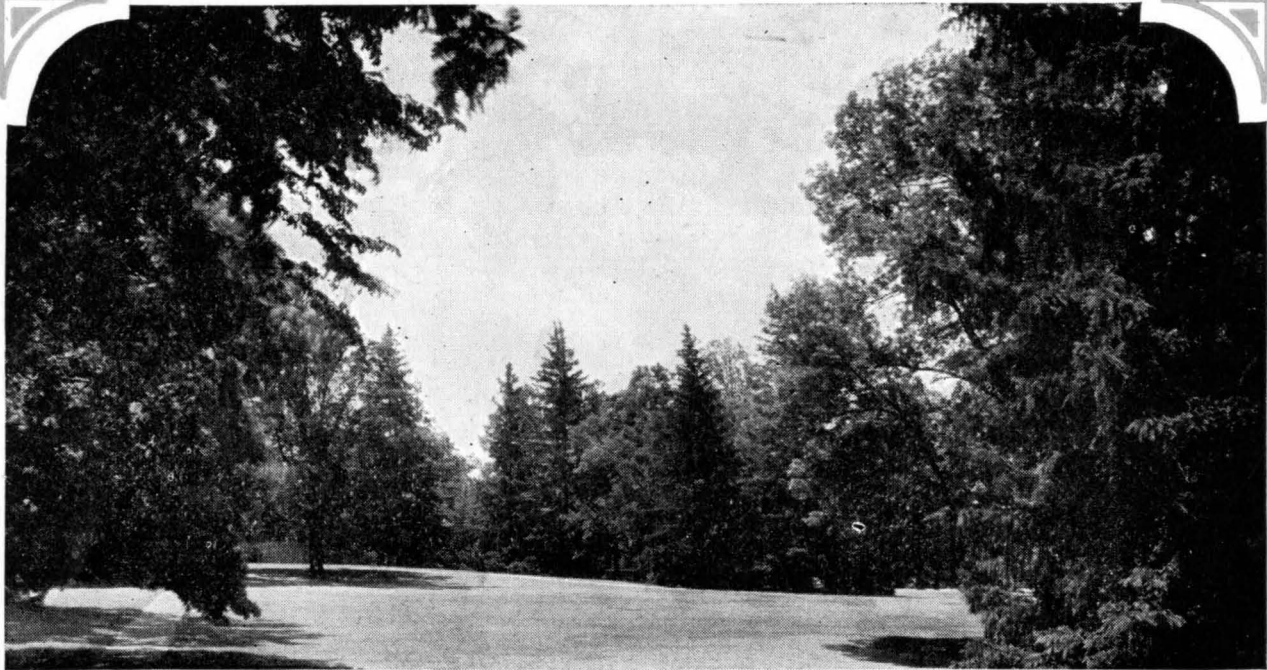
Nineteen men's and ten girls' fraternities and societies form the basis for an important part of the social life of the student body. In addition, the various college classes are organized. There are several honorary fraternities and a number of special clubs and groups. All these are units in the broad social life of the campus, characterized by splendidly democratic associations and by the best of wholesome fellowship. Mingling with those from other divisions of the college, and with fellow students from all sections of Michigan, as well as many other states, the Michigan State College student gains a breadth of training through these social contacts which is in many ways one of the most valuable features of his college course.

The problem of expense, an important consideration with most college students, is not so difficult to meet at M. S. C. as at many other institutions. Board in the college dining clubs is kept to a moderate figure through large scale, co-operative buying and management. Room rents for those in the college dormitories, and for those who live "off campus" in the city of East Lansing, are relatively low.

Many of the students earn part, or nearly all of the expenses of their college course during the years they are in school. Both the college Y. M. C. A. and the Y. W. C. A. maintain employment agencies which seek to find work for the student who must help finance his education.

Michigan State College is particularly fortunate in its location. East Lansing, the "college city," is a community of homes with the wholesome atmosphere of a typical college community. Lansing, the state Capital, is three miles away, with direct and frequent electric car service. The advantages of a larger city are therefore at hand, with the college still far enough removed to dominate its own community and avoid the disadvantages of city life.

M. S. C. has many features which commend it to the prospective college student. There is no better place in which to spend four years of college life, and the varied courses of study offer a range of selection which will fit the needs of almost every young man and woman. The following pages give glimpses of the college campus—its work and its play.



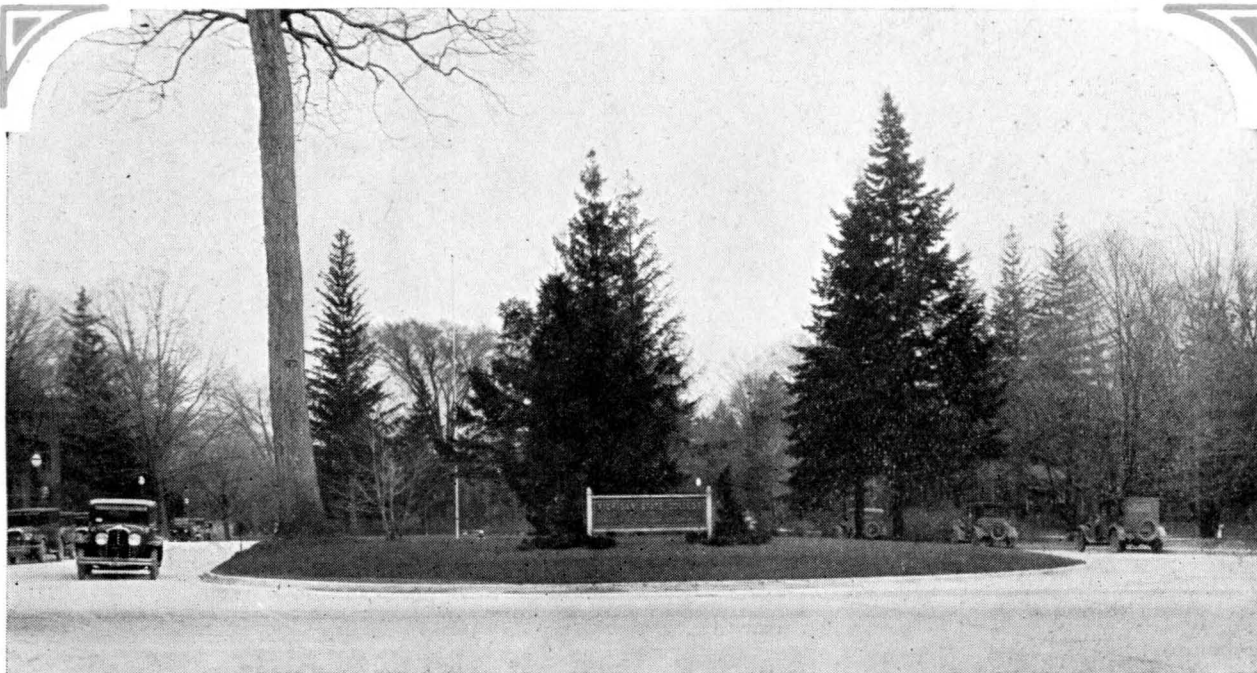
ON THE CAMPUS



THE MICHIGAN STATE College campus is frequently called the most beautiful college campus in America. Stately forest trees break the broad expanses of well kept lawn, giving the whole the appearance of a great natural park. There are nearly one hundred acres in the "front" campus, in addition to the hundreds of acres included in the college farm lands. Landscape effects on a generous scale are thus made possible.

A WOODLAND PATH

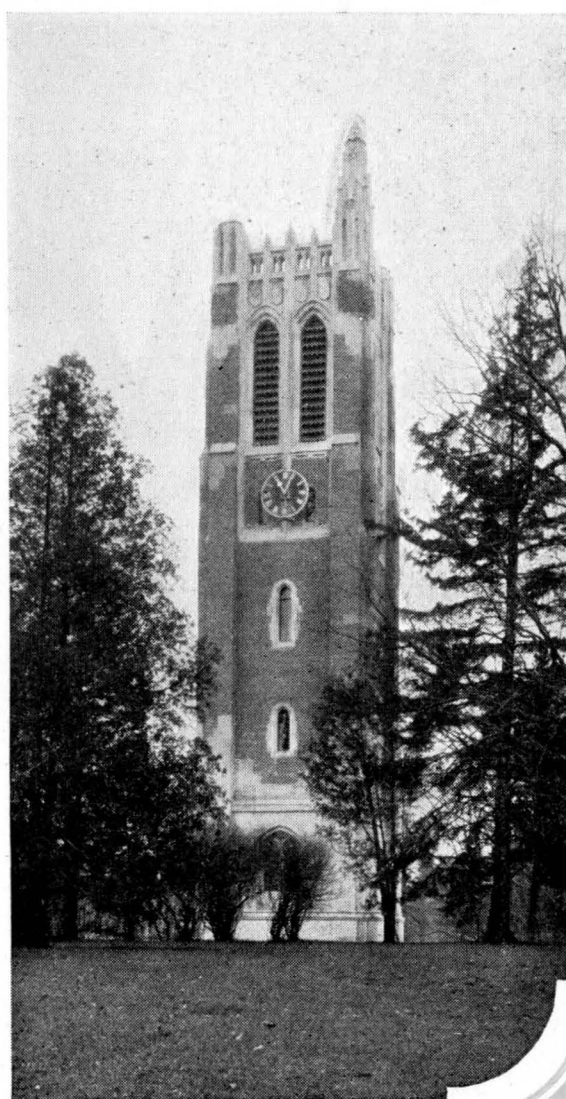




ENTRANCE TO THE CAMPUS

THE first glimpse of the campus is impressive. A paved boulevard entrance leads to the shaded drive which encircles the grounds. On the highest point of the area devoted to the college buildings, and visible from all points on the campus, stands Memorial Tower, marking the site of the first building in the world erected for the teaching of agriculture. The tower is one hundred and five feet in height, and is equipped with costly imported chimes.

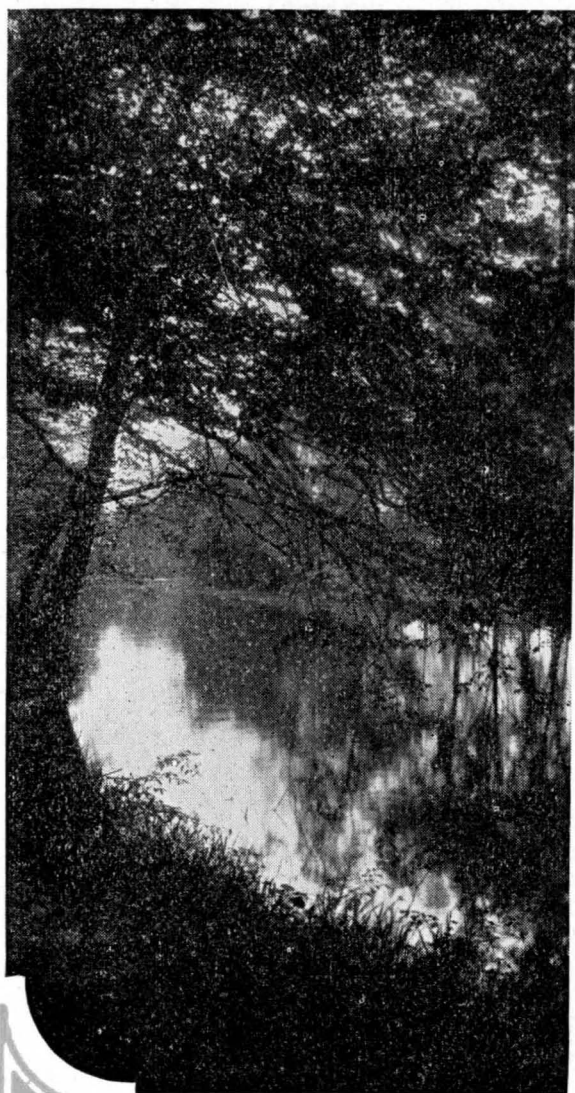
MEMORIAL TOWER







A RIVERSIDE PATH



**F**LOWING through the edge of the campus is the Red Cedar river, famous in song and story of the college. The river creates many of the most beautiful vistas about the grounds, overhanging trees lending an artistic charm to its banks. A new concrete dam raises the level of the water through the college property and makes possible safe and delightful canoeing for a long distance up stream.

THE RED CEDAR RIVER



WHEN SNOW FALLS

THE beauty of the campus is not lost in winter. When most of the two hundred species of trees and shrubs have shed their foliage, snow comes to spread a blanket of even greater loveliness. The hundreds of evergreens are particularly attractive in their winter coats. It is no wonder that M. S. C. students take deep pride in the beauty of their campus.

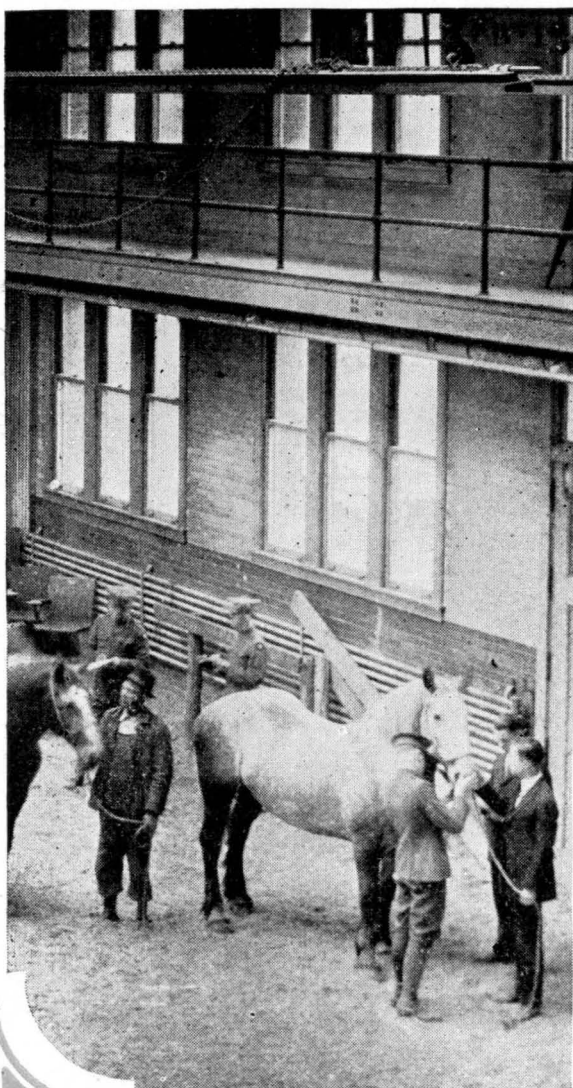
A WINTER VISTA







THE AGRICULTURAL BUILDING



MICHIGAN'S great agricultural industry is given a triple service by the college. The Experiment Station carries on a broad and practical program of research and investigation; the Extension Division disseminates the knowledge thus gained among the farms of the state; the agricultural division of the college proper trains hundreds of young men to become leaders in the various phases of the industry. Many of the graduates of this division become scientific, efficient farm managers; still others find professional careers of opportunity with private, state, or national agricultural service institutions.

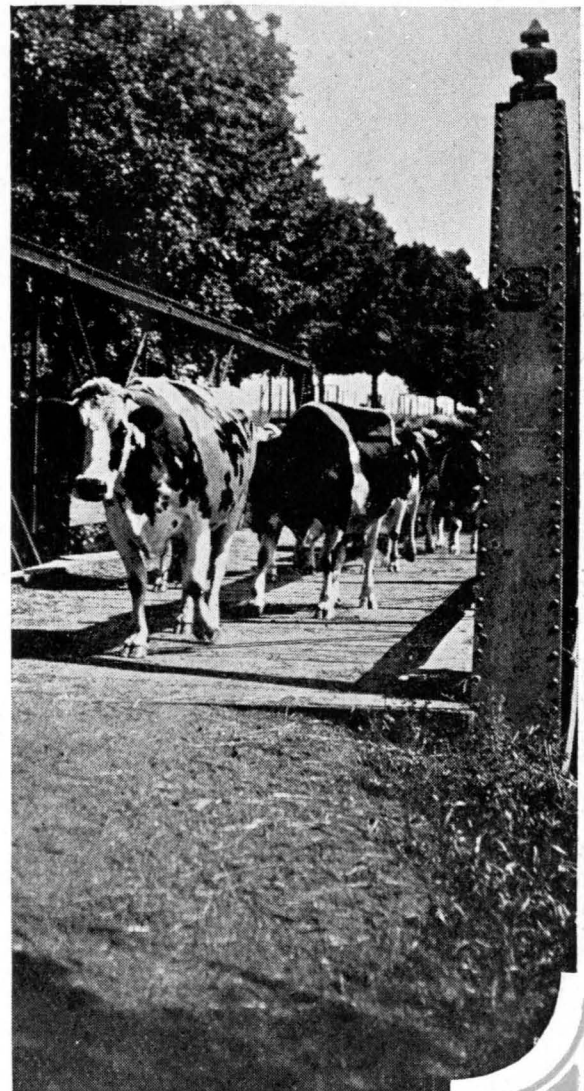
A JUDGING CLASS



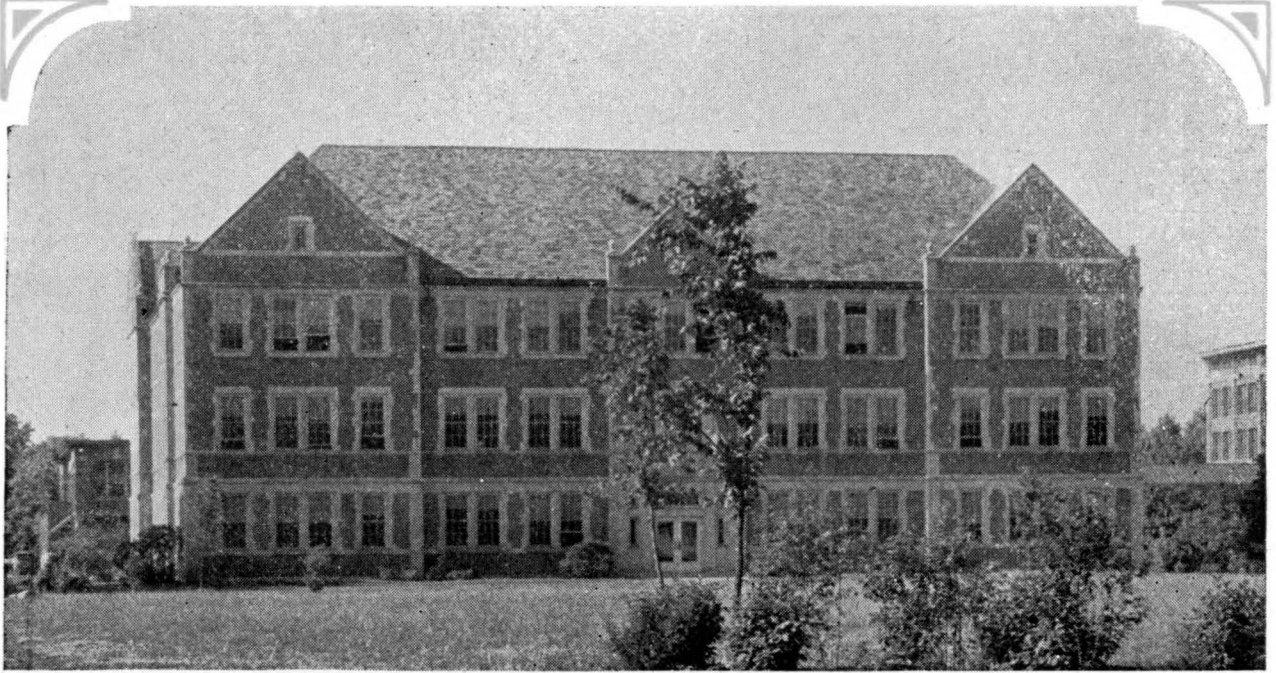
DAIRY AND HORSE BARN

WITH the rapid expansion of the college and the construction of many new buildings to afford facilities for the increasing student body, a new plan has been inaugurated for the arrangement of buildings. All of the barns which house the college livestock are to be moved across the Red Cedar river, back of the main campus. Model dairy and horse barns, equipped with all modern conveniences, have been completed and form the nucleus for the new unit.

AT EVENING







THE HORTICULTURAL BUILDING



**E**QUIPMENT of the different departments under the agricultural division is unexcelled. The buildings, centered around the main Agricultural Building, are large and modern. Laboratory and class room facilities are of the best. The college livestock herds include blooded animals in practically all standard classes, championships falling to Michigan State entries at state and national live stock shows each year. More than a thousand acres of farm and woodlot lands in demonstration and experiment programs complete the equipment for efficient agricultural instruction.

COLLEGE CROPS EXHIBIT



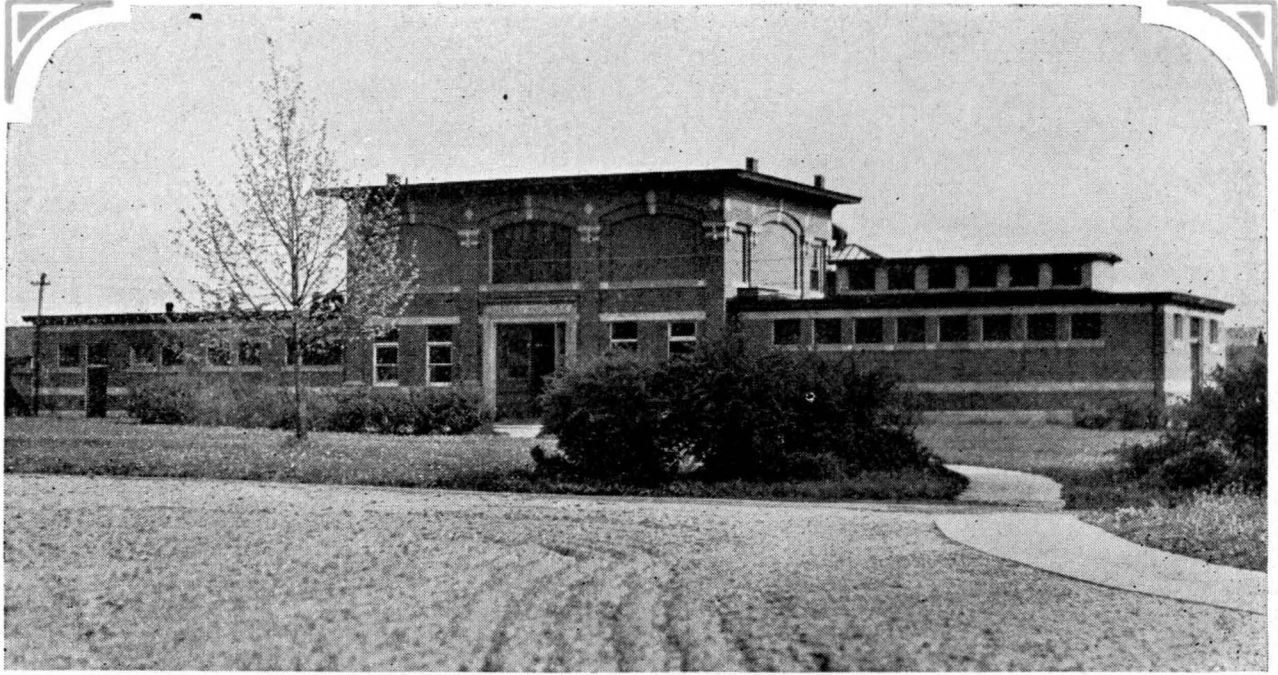
THE DAIRY BUILDING

ALL branches of agriculture are represented by special departments, each with its own separate organization and equipped to develop high standards of instruction and research. Dairy Husbandry, Animal Husbandry, Farm Crops, Soils, Poultry Husbandry, Agricultural Engineering, Farm Management, Marketing and other branches are included in the department roster. All this makes possible the very best of agricultural education, in training men to take advantage of the varied and numerous opportunities open to graduates of this division.

A FARMERS' MEETING





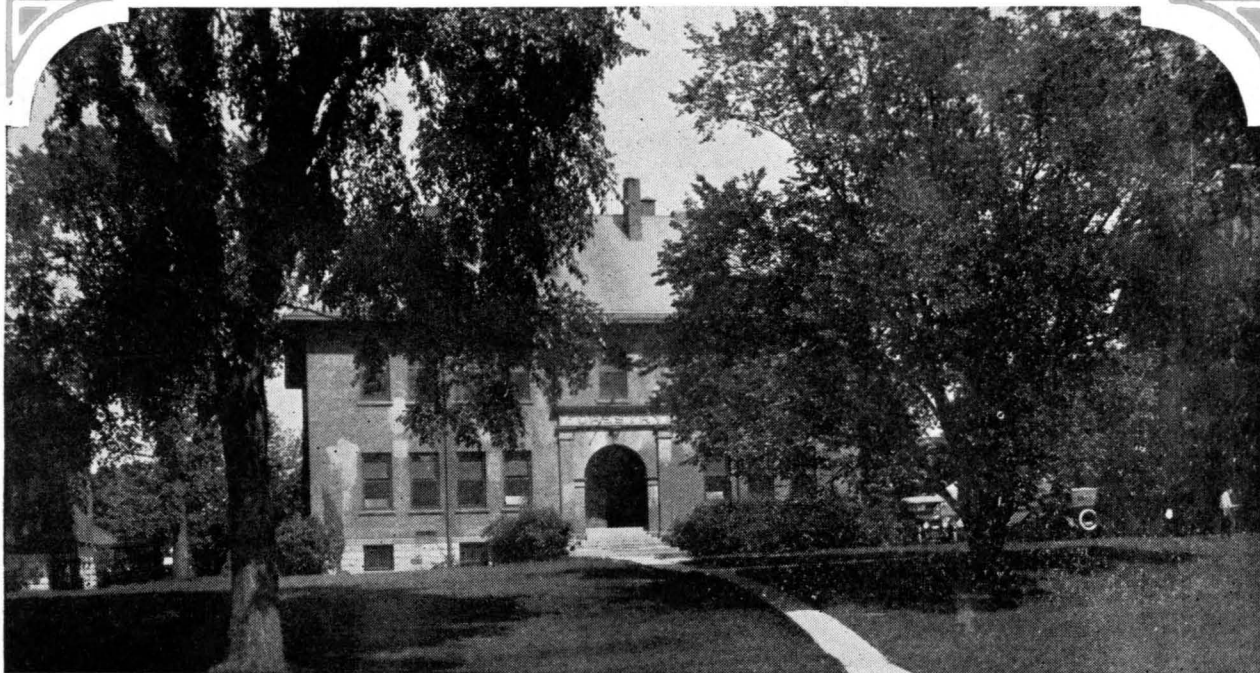


THE VETERINARY CLINIC



CLOSELY allied with the agricultural school is the division of Veterinary Medicine, which offers training of high order for those who wish to enter professional careers in serving the animal industry of the state. Opportunities in this field are said to be greater today than ever before. Forestry and Horticulture are other branches, closely related to the general agricultural division, in which students may major in order to qualify as trained specialists.

A PASTURE SCENE



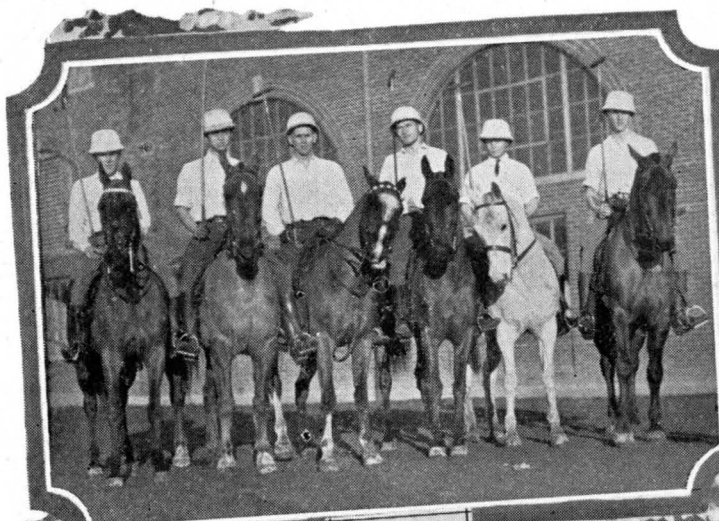
THE FORESTRY BUILDING

**G**RADUATES of the forestry school at Michigan State hold responsible positions in federal, state, county, and city forestry work. A large forest tract in northern Michigan serves both as an experiment station and as a summer camp for students of this division. Forestry nurseries in the Upper Peninsula and at East Lansing, and large wooded tracts on the college farms complete the outdoor laboratories, which are unexcelled for practical work in this field.

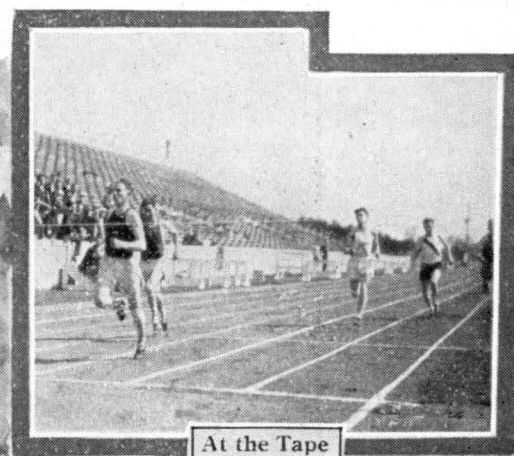
THE SUGAR CAMP







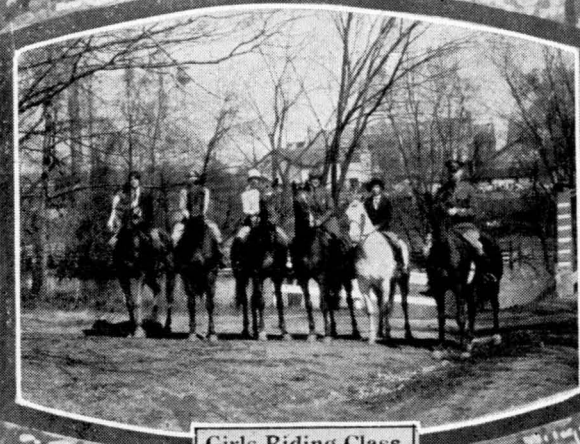
Polo Team



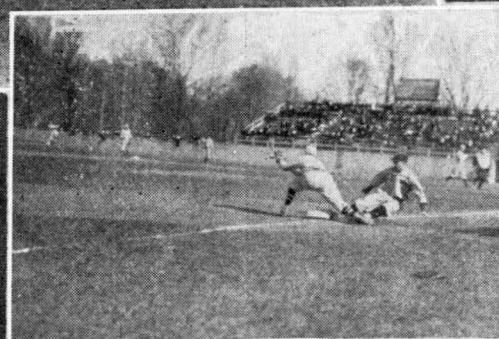
At the Tape



The King of Sports



Girls Riding Class



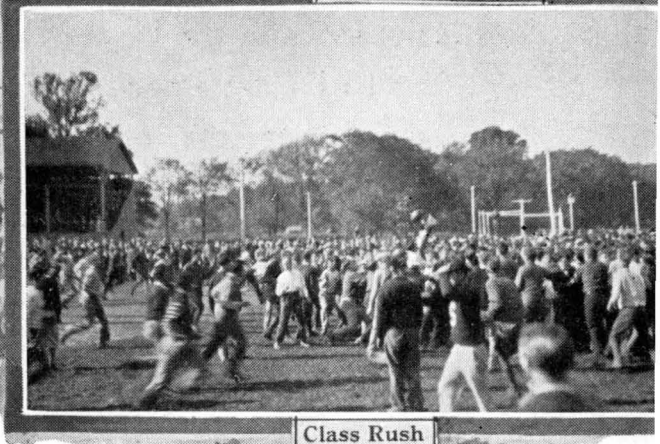
Safe



M. S. C. Glee Club

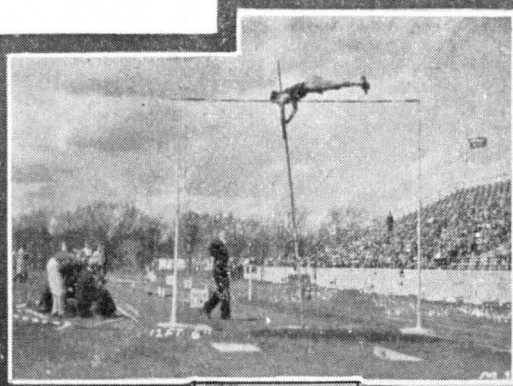


M. S. C. J-Hop



Class Rush

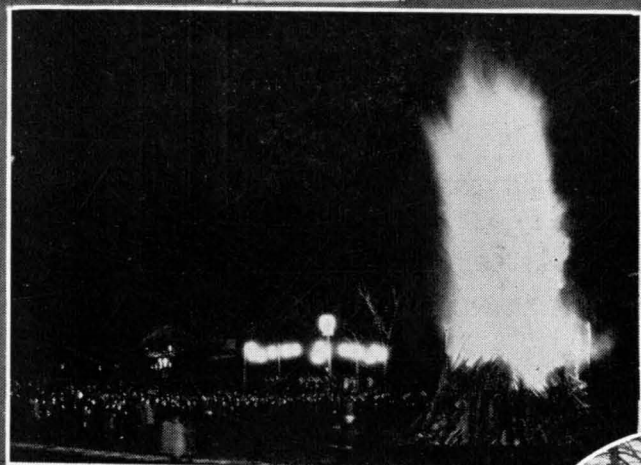




Over the Top



Dramatics



Annual Barbeque

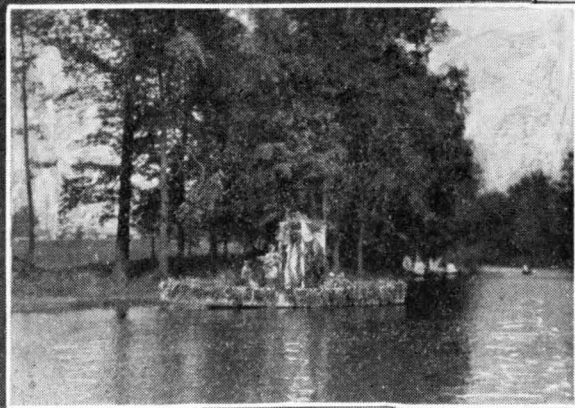


Canoeing on the Red Cedar

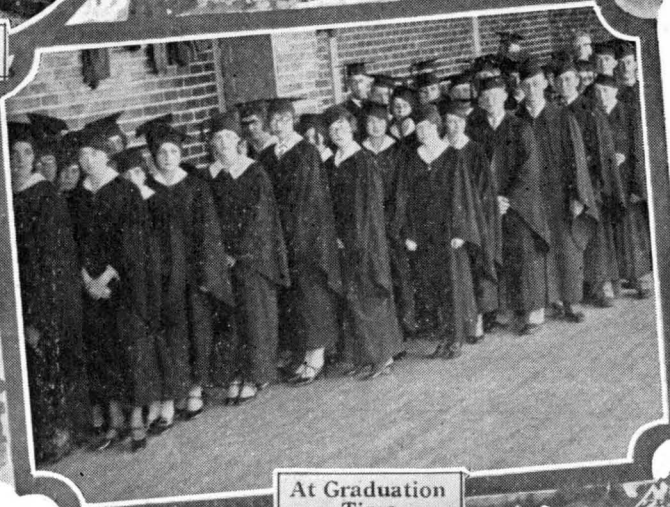


Nature's Beauty

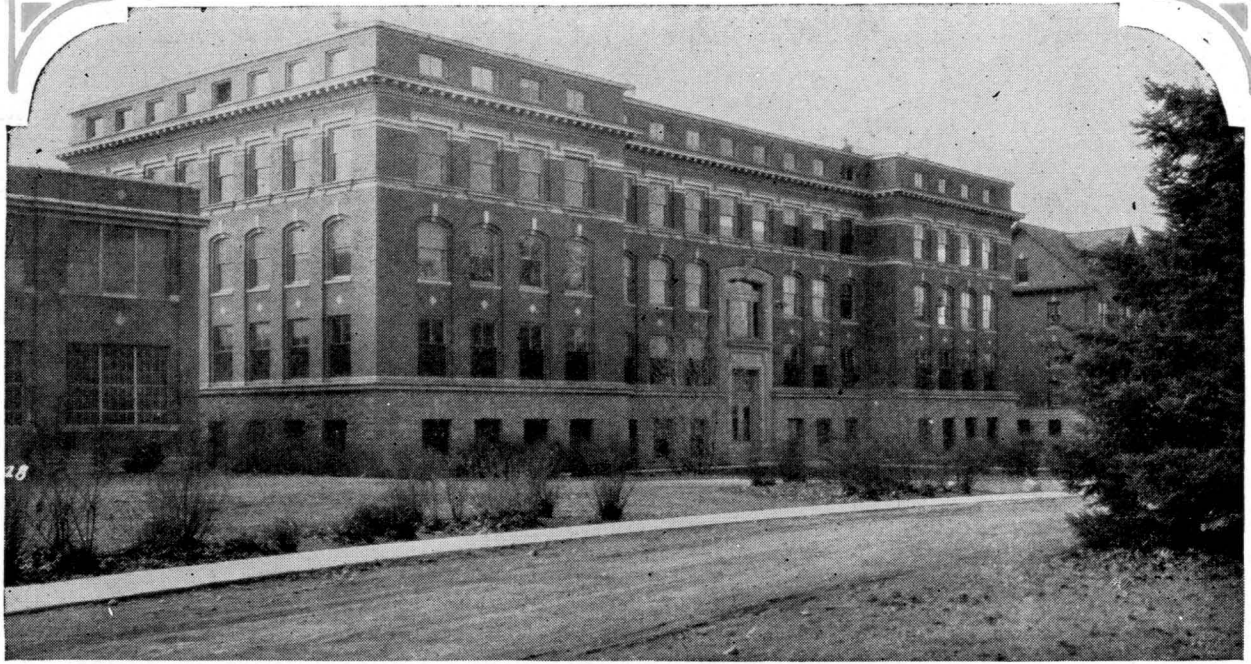
**Glimpses of College Life at M.S.C.**



Water Carnival on River



At Graduation Time



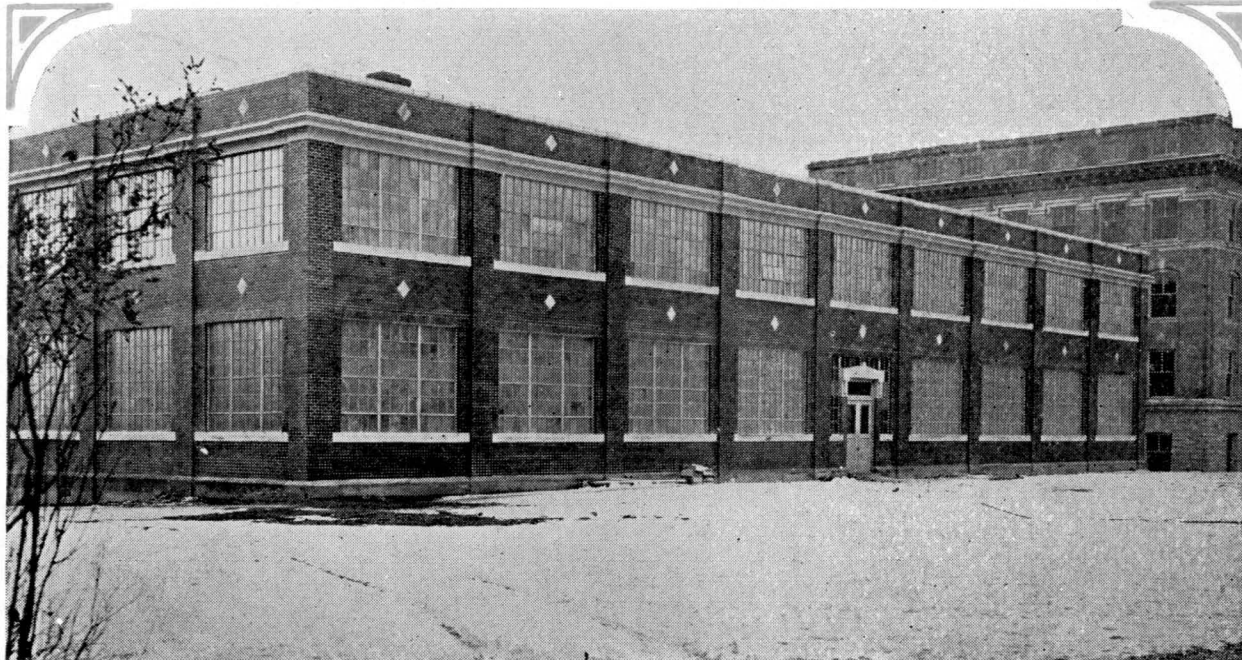
THE ENGINEERING BUILDING



THE Engineering Division of the college, founded in 1885, has grown to be one of the outstanding engineering schools of the country. Its buildings and shops contain the best of modern equipment in all branches, while a large staff of highly trained engineering specialists make up its faculty. Five distinct divisions of work allow specialization leading to professional degrees. They are: Chemical Engineering, Civil Engineering, Electrical Engineering, Mechanical Engineering, and Engineering Administration.

STUDENT SURVEYING CLASS

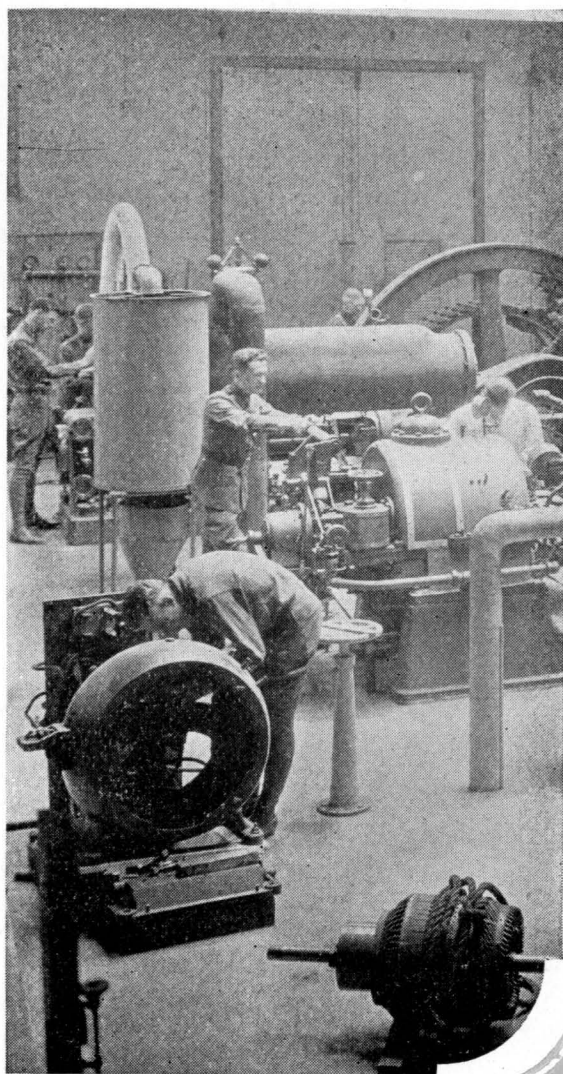




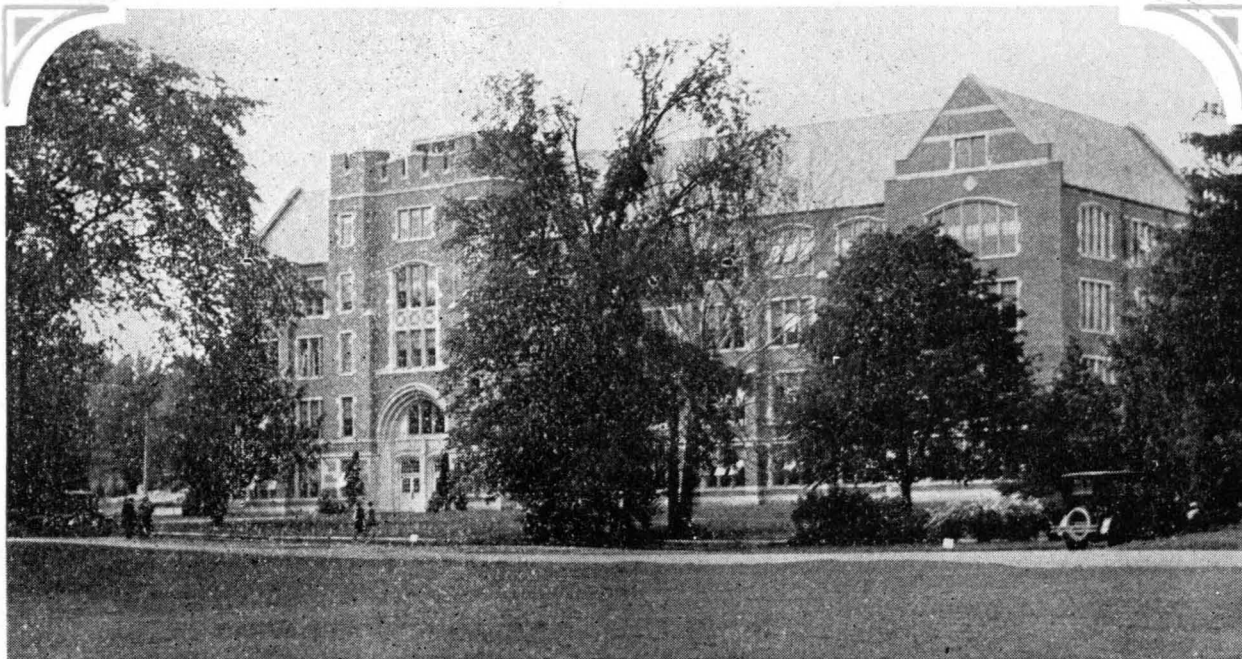
THE ENGINEERING SHOPS

**G**RADUATES of the Michigan State Engineering Division have won an enviable reputation for ability to meet successfully the practical problems which arise in their professional duties. With sound technical training as a foundation, and the practical application of technical problems wherever possible, the work of the school develops individual initiative to a high degree.

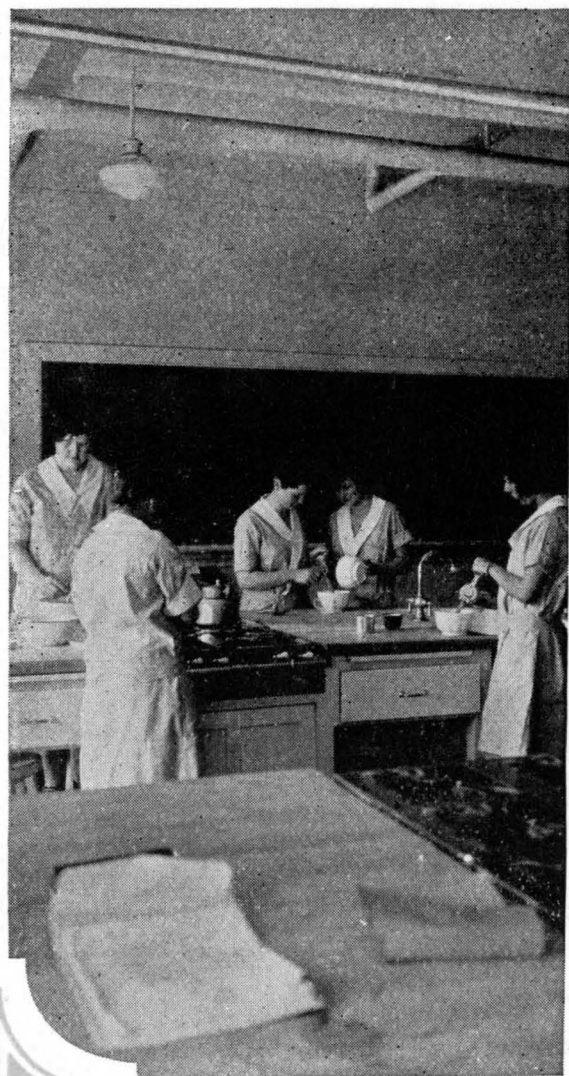
THE POWER LABORATORY







THE HOME ECONOMICS BUILDING



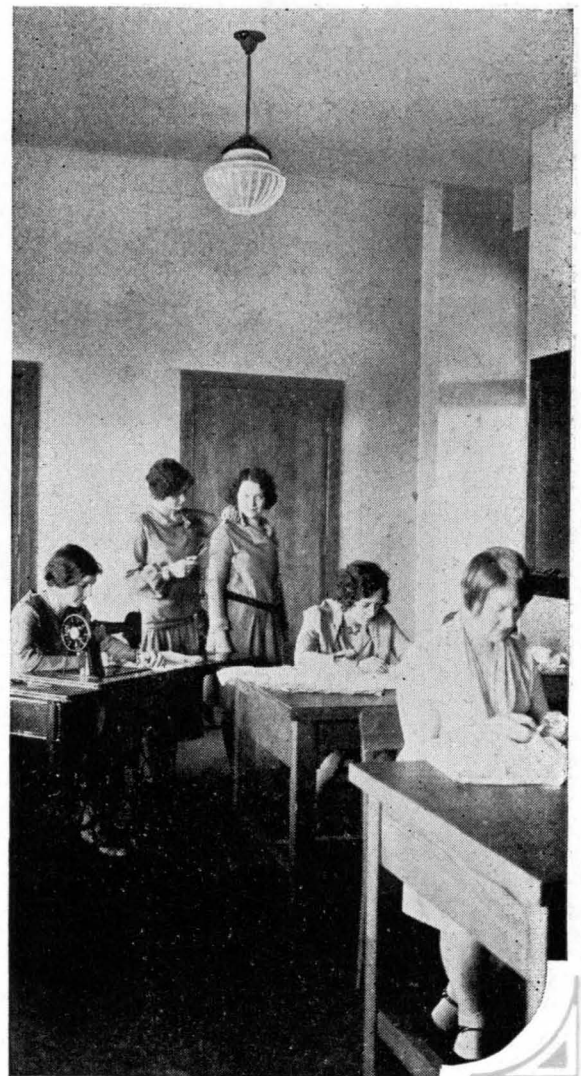
CONSTRUCTION of the new Home Economics Building has given this division model equipment. Complete laboratories, pleasant classrooms, and numerous special features in this building furnish everything that could be desired for effective study. Girls in the Home Economics Division have a choice among several groups for major study, making possible a wide range of selection. The groups are: Foods and Nutrition, Institutional Management, Clothing, Textiles, Related Arts, Vocational, Nursing, and General.

AN H. E. LABORATORY



THE H. E. PRACTICE HOUSE

THE ultimate purpose of the courses in Home Economics is to train young women in the application of the principles of the sciences fundamental to living and the improvement of the home. Professional opportunities for graduates of this division in teaching and other special fields are also many. A practice house, where senior girls have opportunity for practical application of their scientific training, is maintained in connection with the Home Economics department.

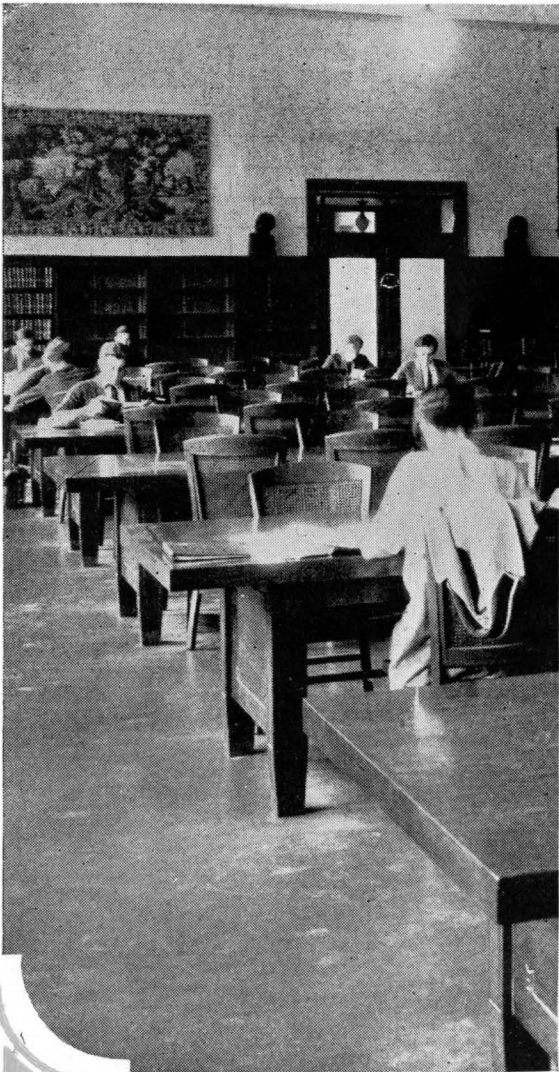


A SEWING CLASS





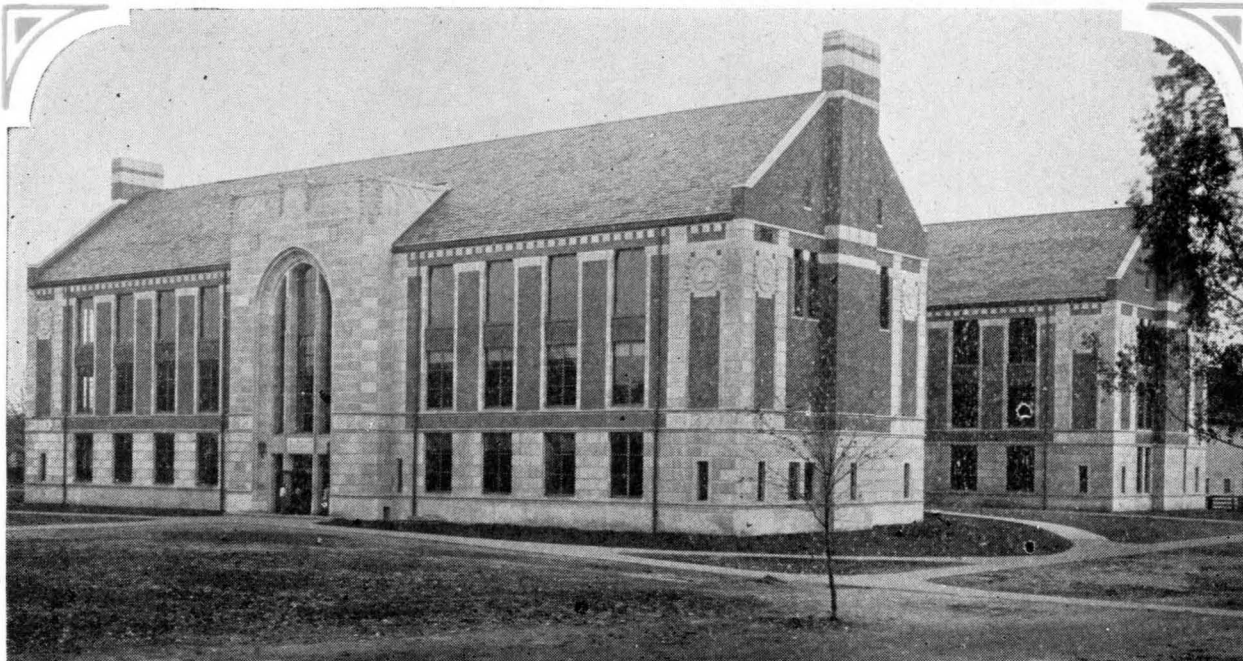
THE LIBRARY



**O**PPORTUNITY for a broad and general education is offered in both the Liberal Arts and Applied Science Divisions. Those who do not wish to take up the technical studies in a professional field can find the sort of training which is adapted to their needs in either of these courses. In these two courses, a wide range of subjects is offered in which the student may specialize.

A LIBRARY STUDY ROOM

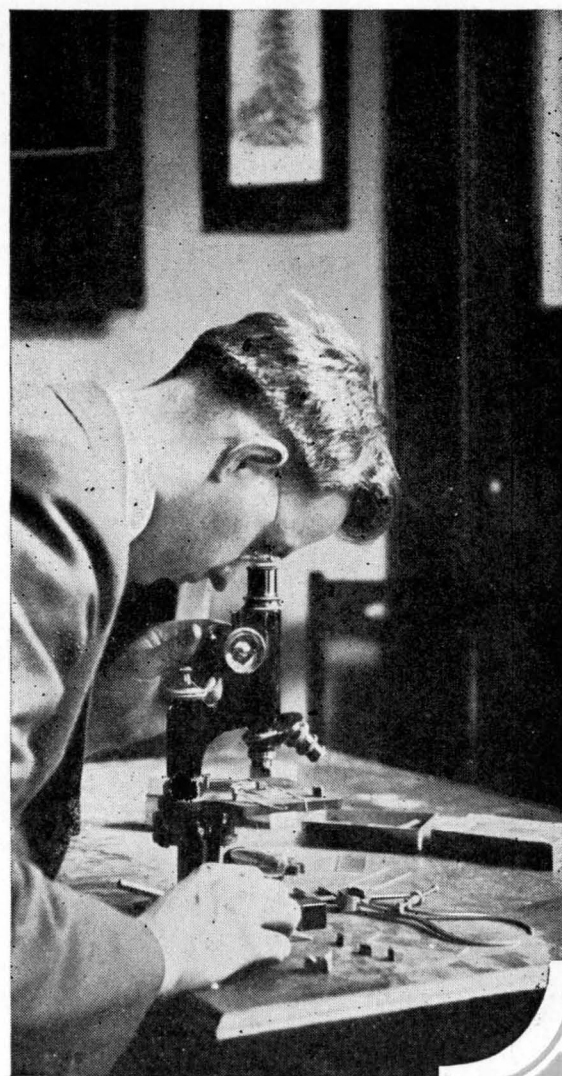


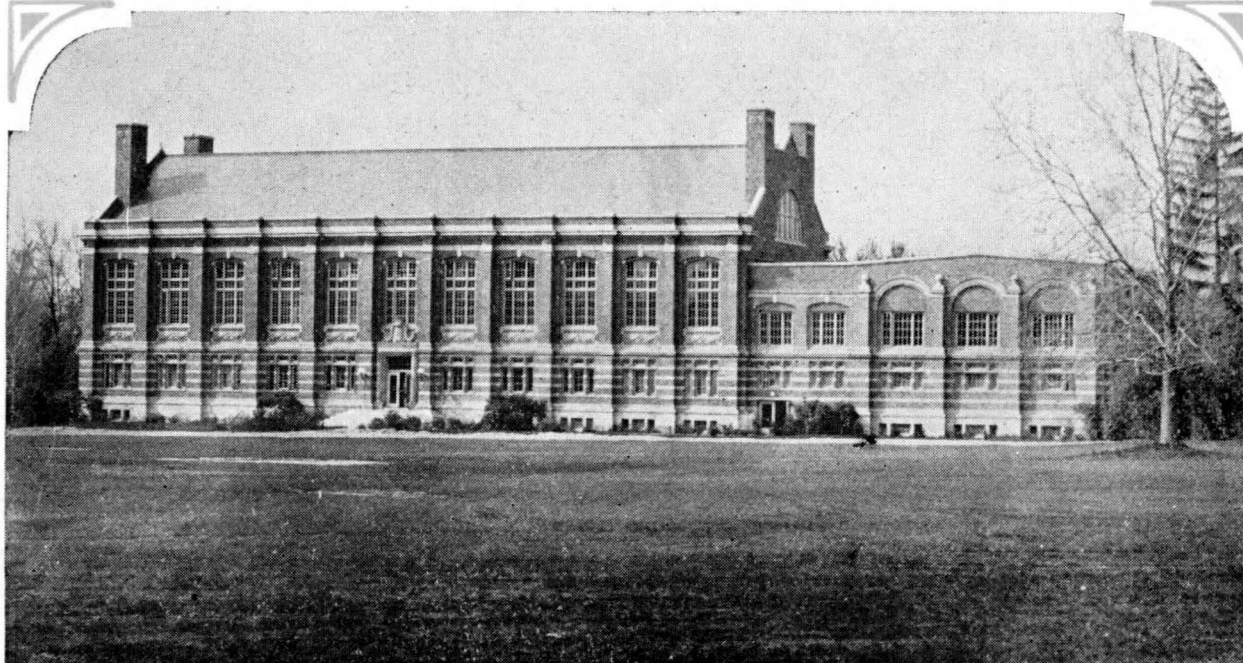


THE CHEMISTRY BUILDING

SCIENCE departments and those dealing with the humanities are of particular interest to science and art students. Among the subjects with which they will come in contact are: History and Political Science, Economics, Sociology, English, Modern Languages, Drawing and Design, Music, Mathematics, Chemistry, Physics, Botany, Bacteriology, Entomology, Physiology, Geology, and Zoology.

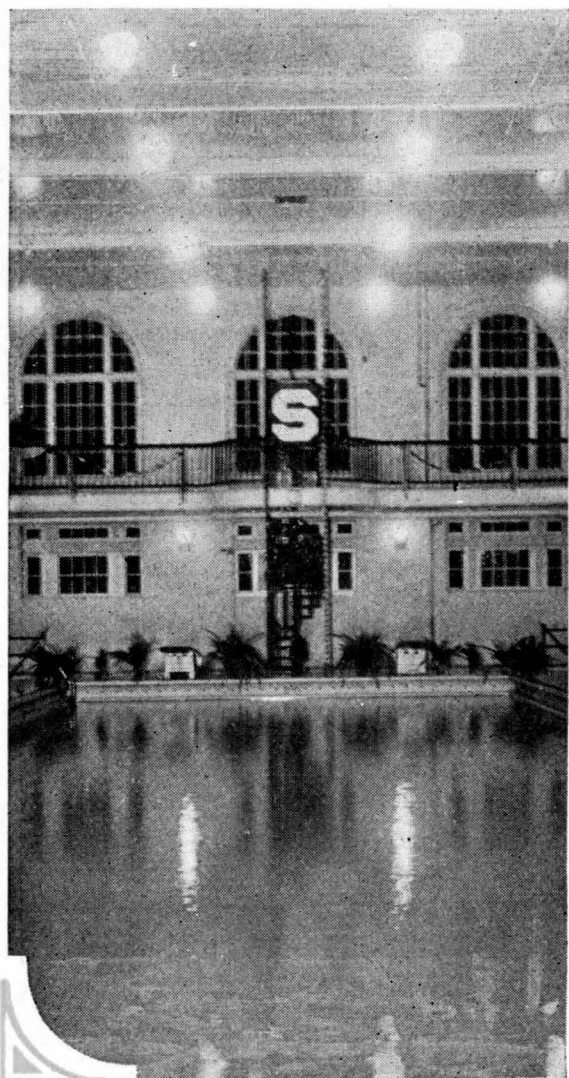
IN THE LABORATORY





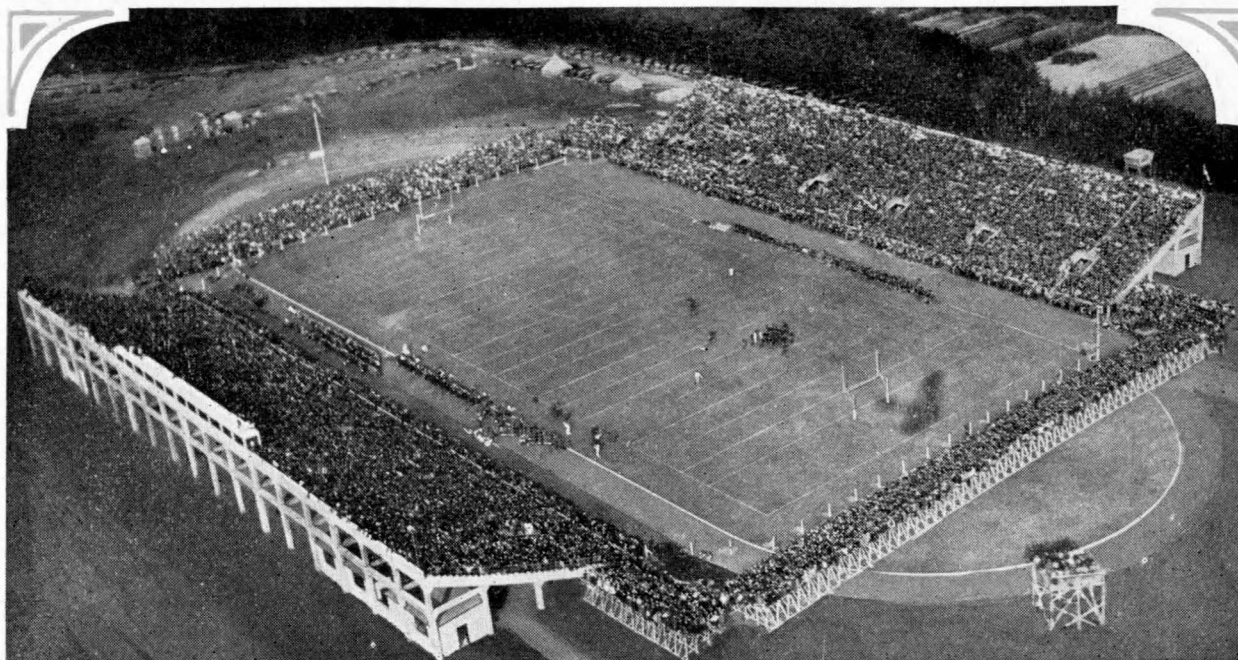
THE GYMNASIUM

**D**EMAND for trained men to coach athletics and teach physical education has created an attractive vocational field for college graduates. Michigan State College has joined the ranks of the leading universities and colleges in offering special four-year courses of study to prepare men for professional service in the physical education field. The course in physical education meets both the college and the state requirements fully.



THE SWIMMING POOL





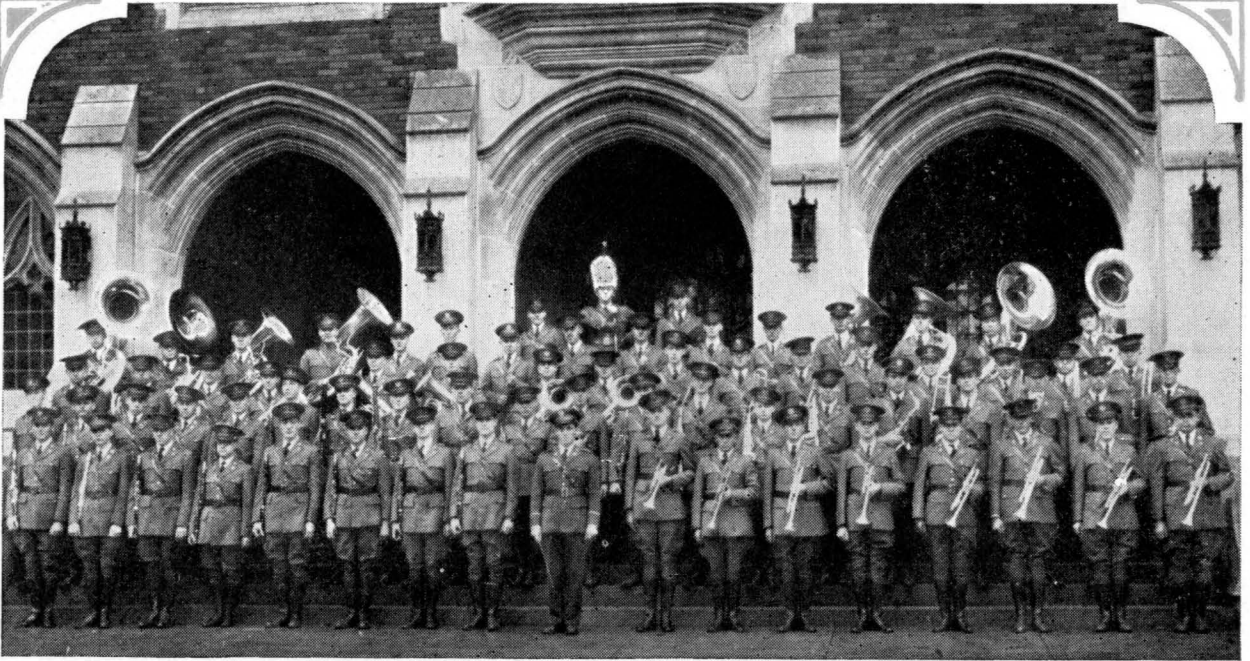
THE STADIUM

**W**OMEN students who desire to enter the physical education field can prepare at Michigan State to serve as instructors and directors of physical education in public schools and colleges; as playground supervisors, as camp directors, and as club leaders. The courses of study for both men and women afford the student the opportunity to major in physical education, to carry a minor course of study in other subjects, and to take the required courses for the state teacher's certificate.

A CANOEING CLASS





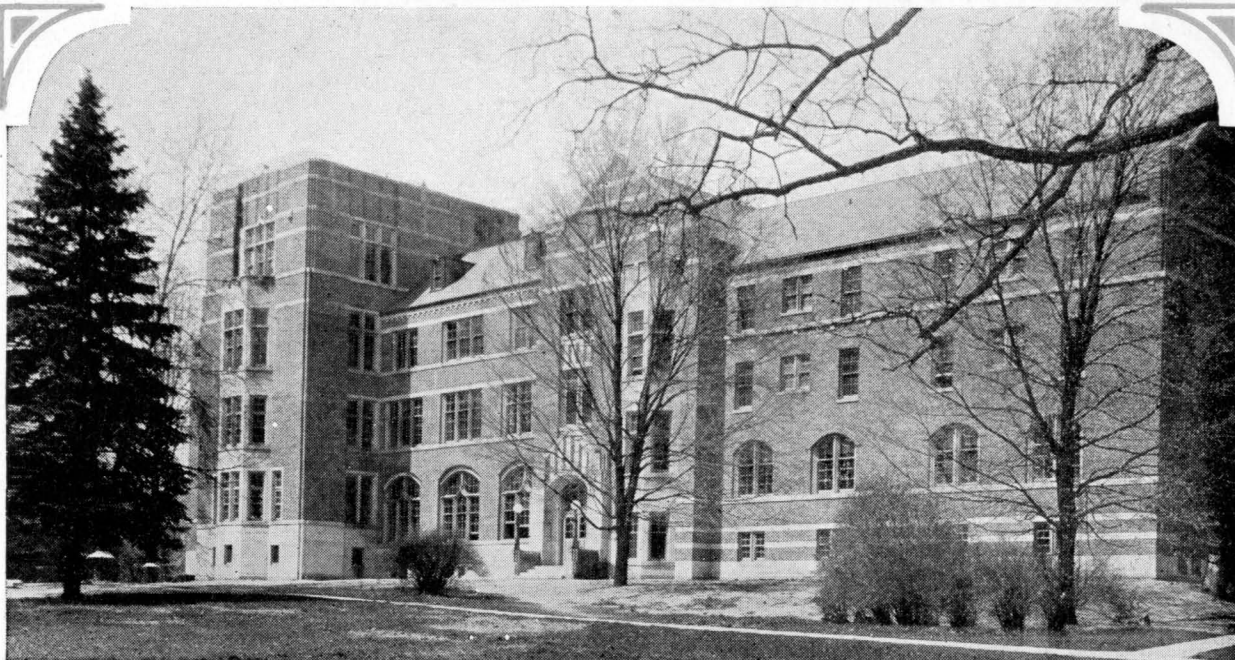


THE MILITARY BAND



REORGANIZATION of the school of music has made available instruction of the highest type. A staff of instructors, many of whom are nationally and internationally famous for their work on the concert stage, make up the personnel of this department. The course in Public School Music offers opportunity for those who wish to teach, while students enrolled in other courses of study may elect to study voice or instrumental music in this department.

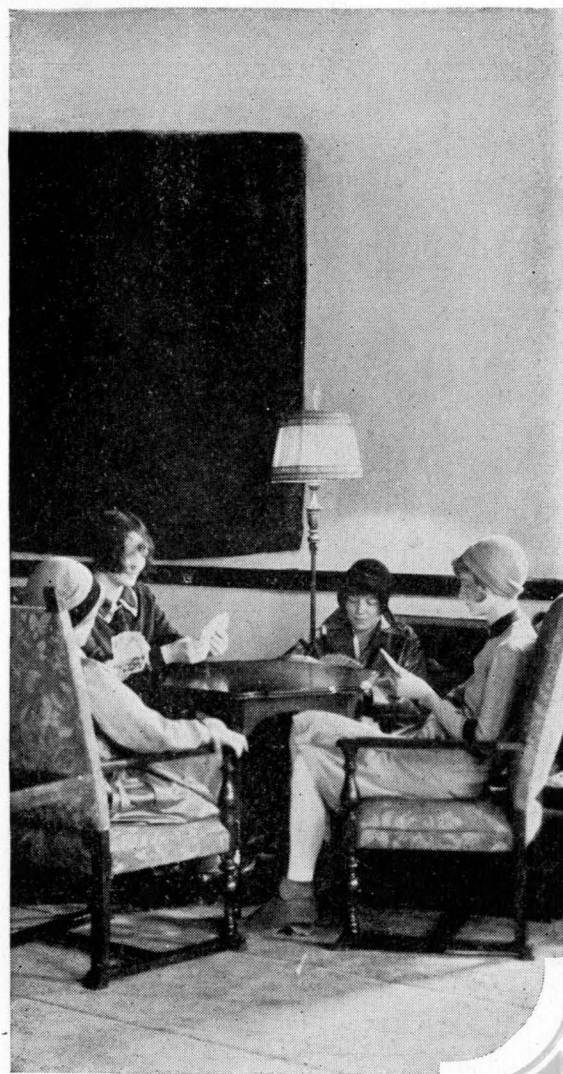
THE MUSIC BUILDING



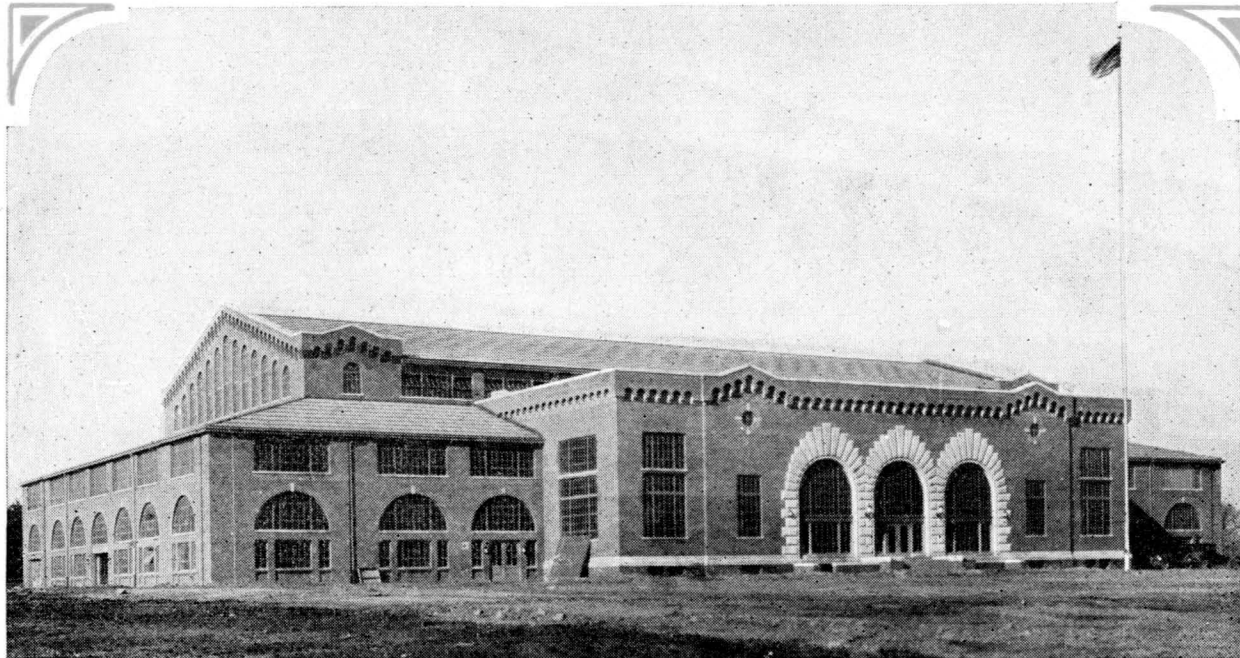
THE UNION BUILDING

ONE of the finest College Unions in the country serves as a social center for Michigan State students, and as a campus home for M. S. C's. seven thousand loyal alumni. The building is equipped with lounging and recreation rooms for men and for women, a large ballroom for social functions, a cafeteria, and public and private dining rooms. The policy of the Union, in regard to its service to the student body, is regulated by a Student Board.

WOMEN'S LOUNGE







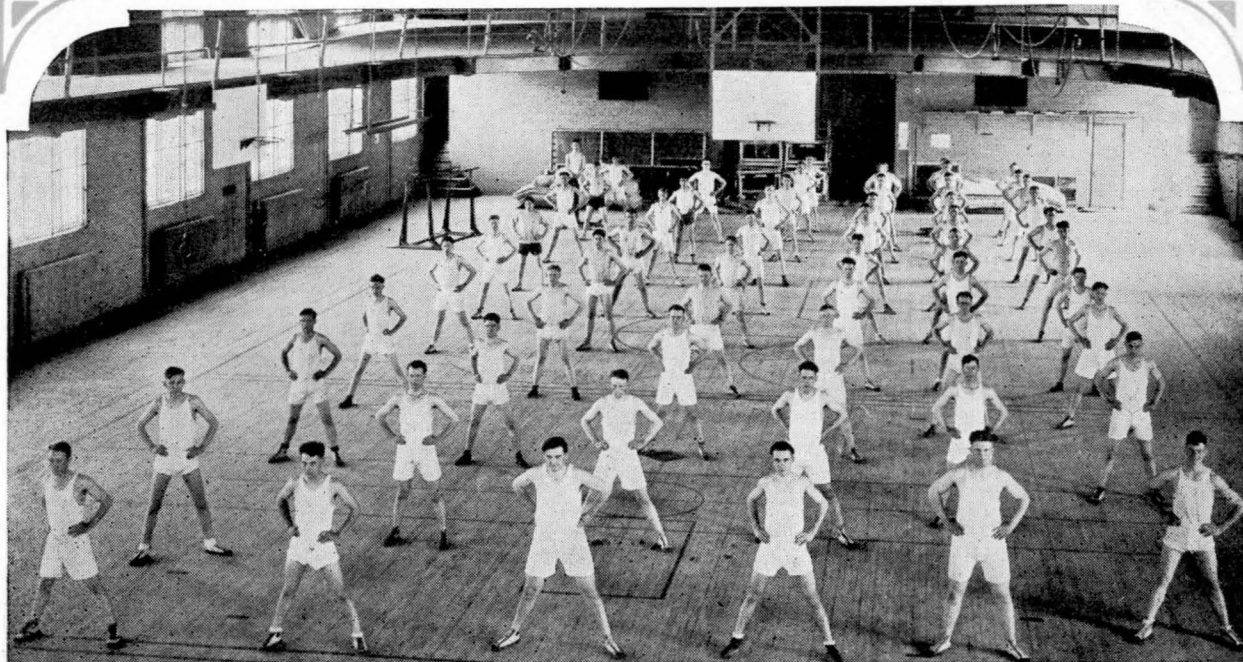
DEMONSTRATION HALL



INTERESTING military training is given Michigan State men through the Reserve Officers Training Corps, which is part of the organization of all Land Grant colleges. Military work is a requirement for freshmen and sophomores, while upperclassmen who qualify may elect advanced work in cavalry, coast artillery, or infantry groups. Complete and modern equipment, including more than fifty cavalry horses, lends effectiveness to the military instruction. Regular army officers are in charge.

ARTILLERY MANEUVERS



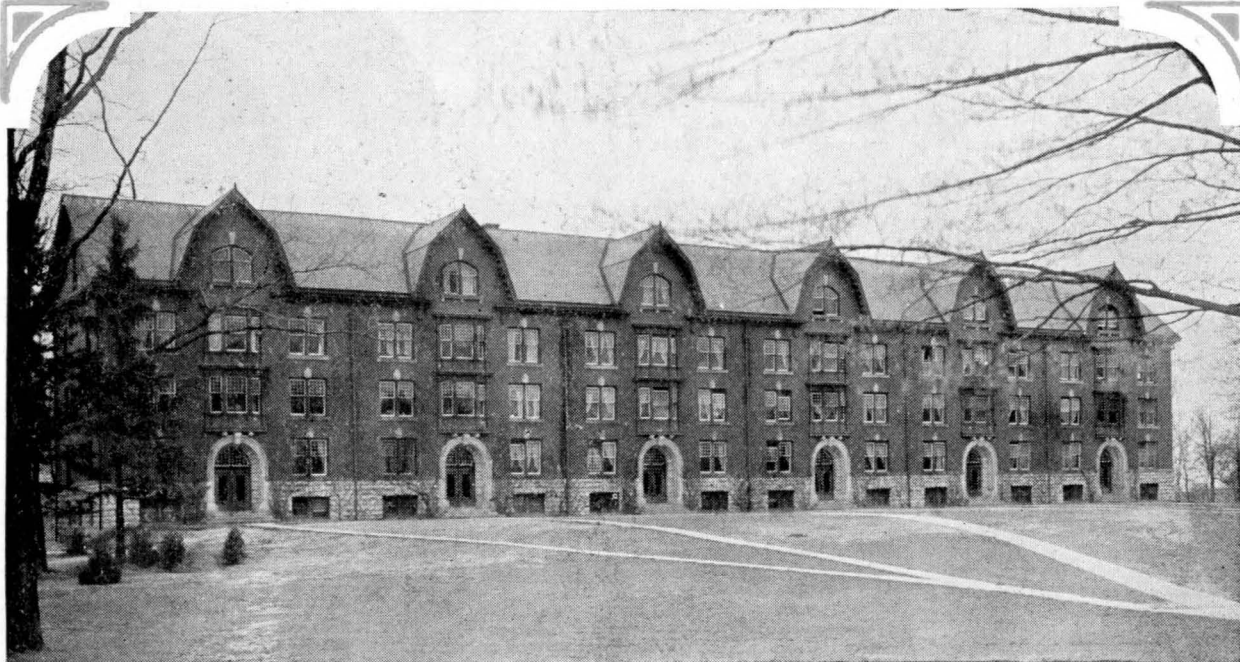


A GYMNASIUM CLASS

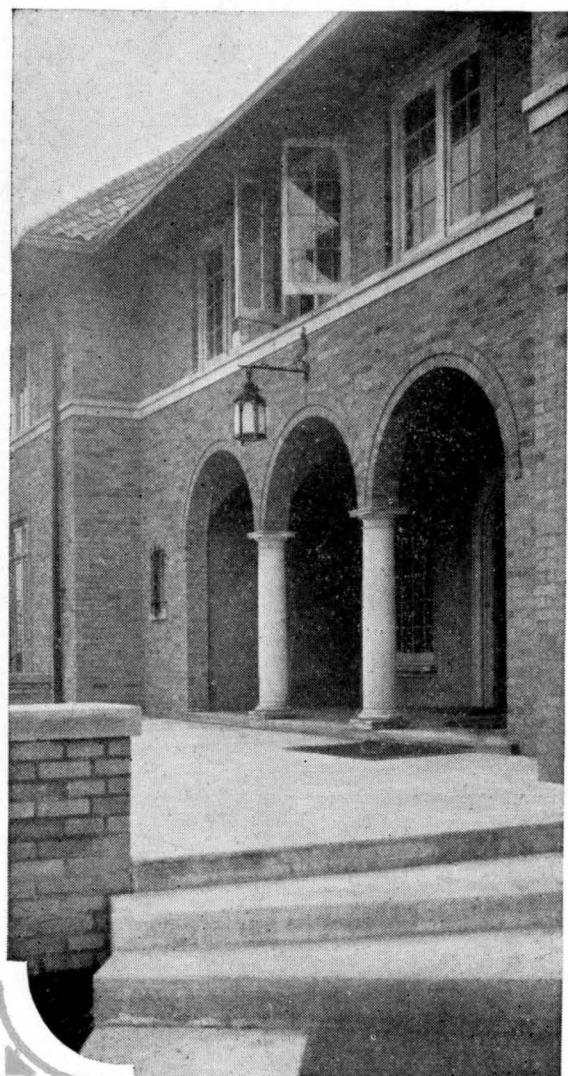
THE health of Michigan State students is carefully guarded by the college. A hospital with ample capacity for the needs of the student body and a resident physician serve the needs of the college throughout the school year. Students are entitled to unlimited advice and treatment at the dispensary, a medical examination at any time during office hours, and sixty days' free care in the hospital per year. Freshmen are required to have a complete physical examination by the health service physician.

THE COLLEGE HOSPITAL





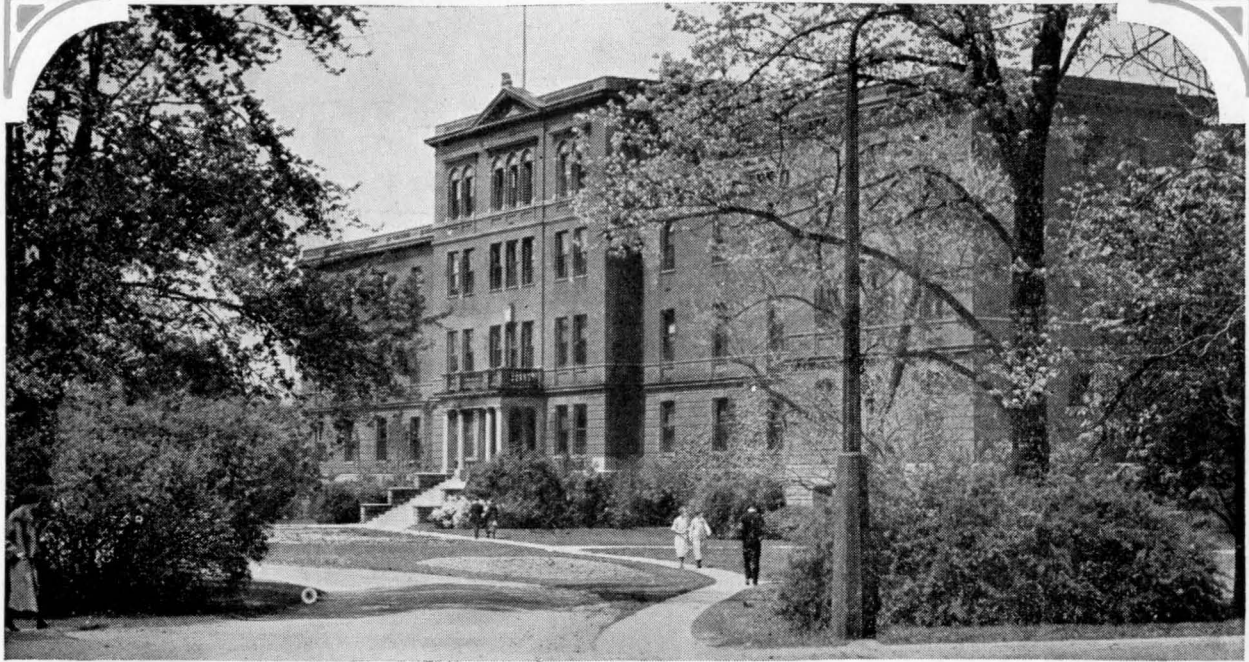
WELLS HALL



A FRATERNITY HOUSE

**D**ORMITORIES play an important part in building the spirit of the campus. Wells Hall houses many of the men, while girls make their college home in the Woman's Building, in Abbott Hall, and in a number of special college houses which serve as auxiliary dormitories. This dormitory system not only makes possible a comparatively low room rent, but also tends to bring large groups of the student body together.

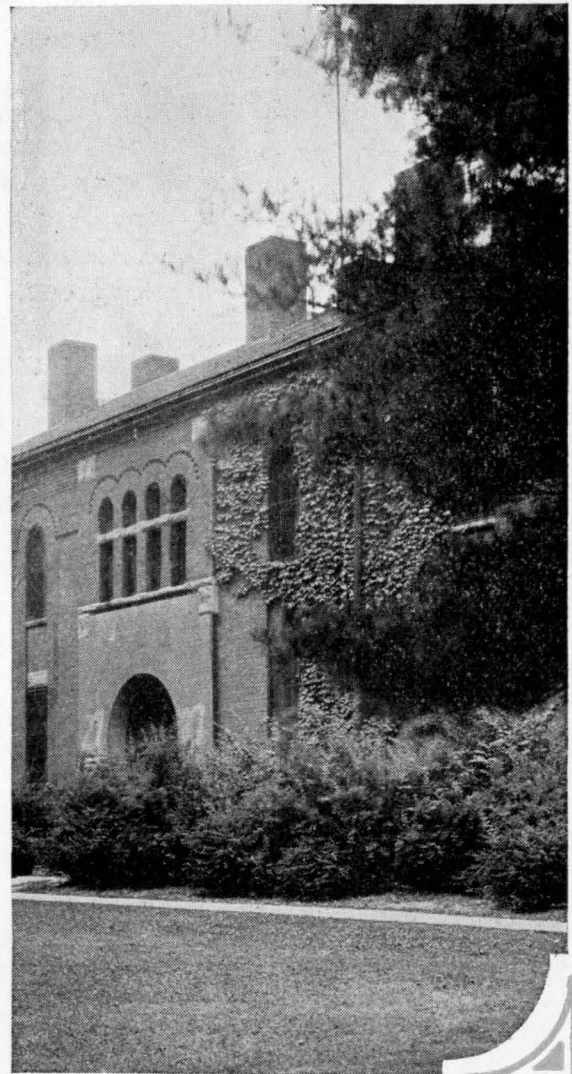




WOMAN'S BUILDING

PRACTICALLY all of the fraternities have their own houses "off" campus, an average of about thirty upperclassmen of each group making the fraternity house their home. Freshmen as a general rule are encouraged to live in the dormitories as much as possible, for the sake of the broadening influence to be gained by contact with many students from different divisions of the college and from different sections of the state and nation.

ABBOT HALL



## COURSES OF STUDY AT THE MICHIGAN STATE COLLEGE

AGRICULTURE—Four year courses, leading to Bachelor of Science degree. (Including Horticulture and Landscape Architecture.)  
Special Winter Short Courses.

ENGINEERING—Four year courses, leading to Bachelor of Science degrees in Electrical, Chemical, Civil, and Mechanical Engineering, and Engineering Administration.

HOME ECONOMICS—Four year course leading to Bachelor of Science degree; and five year course leading to Bachelor of Science and Registered Nurse degrees.

VETERINARY MEDICINE—Four year course leading to degree of Doctor of Veterinary Medicine; and six year courses (in combination with Agriculture or Applied Science), leading to Bachelor of Science and Doctor of Veterinary Medicine degrees.

FORESTRY—Four year course, leading to Bachelor of Science degree.

APPLIED SCIENCE—Four year course, leading to Bachelor of Science degree.

LIBERAL ARTS—Four year course, leading to Bachelor of Arts degree. Four year courses in Physical Education for men and for women, Business Administration, Public School Music, and Hotel Administration are administered by the Liberal Arts Division.

ADMISSION—Graduates of accredited high schools, and others on examination in equivalent subjects.

(Note:—Admission to Winter Courses in Agriculture open to any resident of the State over sixteen years of age.)



**F**OR INFORMATION regarding  
various courses of study, admis-  
sion, or copies of the College catalog,  
write to

THE REGISTRAR,  
Michigan State College,  
East Lansing, Michigan

Michigan State College of Agriculture and Applied Science Bulletin

East Lansing, May, 1929. Vol. 23, No. 9.

Entered at P. O. in East Lansing, Michigan as second class matter.