



the
helmet

1948-49



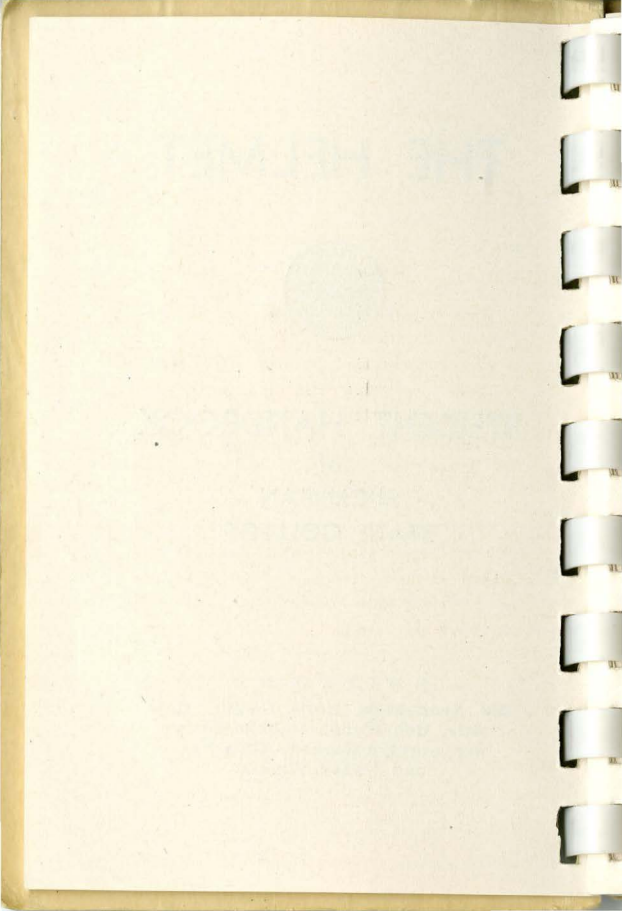
THE HELMET



STUDENT HANDBOOK of MICHIGAN STATE COLLEGE

E D I T E D B Y

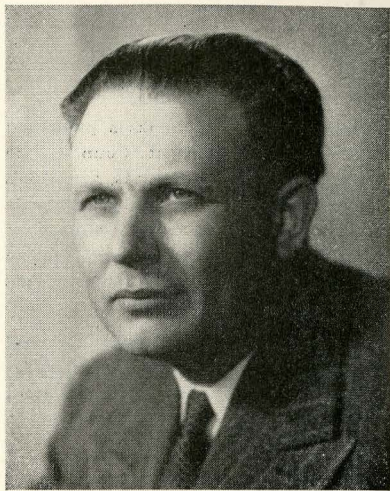
**Bill Sonneborn, Doris Owens, Rose
Nahra, Bob Wendt, Isabelle Bruck-
ner, Carolyn Karney, Alma Eva,
and Nancy Wixom.**



FOREWORD

This Student Handbook is published jointly by the Student Council, the Associated Women Students, the Men's Council and the Journalism Department to provide a short summary of interesting and necessary information for freshmen and other new students at Michigan State College.

Freshmen are also urged to read the college catalog and become familiar with scholastic rules, content of courses, and courses required in their chosen fields.



JOHN A. HANNAH
President

**GREETINGS
FROM PRESIDENT HANNAH**

TO ALL FRESHMEN AND
OTHER NEW STUDENTS:

Among the traditions most highly honored at Michigan State College is that this is a friendly institution, one at which students, faculty, and staff make a conscious effort to exchange greetings, keep formality at a minimum, and create an atmosphere of good-will in which to study, work, and live.

In that same spirit, it is a pleasure to extend this official greeting to freshmen and other new students on behalf of the State Board of Agriculture, the faculty, and the staff. We are glad to have you with us.

As the months pass by, I am sure you will become increasingly happy that you have selected Michigan State College as your Alma Mater. It is an institution with a proud history, running back almost one hundred years. It is a land-grant college, with all the devotion to service of the people that the phrase implies. The excellence of its faculty and its educational philosophy have been accorded recognition in many fields. Its growth in

size in recent years to a front rank among the great universities of the United States has been paralleled by its growth educationally. For example, the Basic College, in which the great majority of you will be enrolled, is accepted generally as an outstanding development in the field of general education.

The success achieved by graduates of Michigan State College in the many fields of human activity in which they serve is the best evidence of the quality of the education available to you here. Faculty and equipment are top quality; you have been admitted as students because you are of top quality. The opportunity for which hundreds of thousands of other young Americans yearn in vain is open to you all.

In welcoming you to Michigan State College, I counsel you to justify the faith of your parents and friends who are supporting you here, to justify the confidence of this college that you are men and women of college caliber, and to justify your faith in yourselves by developing your talents and intelligence to the fullest degree.

JOHN A. HANNAH,
President

Welcome!

It is a pleasure to extend a cordial welcome to all students who are entering Michigan State College for the first time. Also, we are happy to welcome back those who are returning for a continuation of their education.

After a lapse of several years, the publication of the student handbook is being resumed. We hope it proves of great value to the new student in becoming better acquainted with Michigan State College in what it has to offer in the manner of services and opportunities for a complete college education.

S. E. CROWE,
Dean of Students.



S. E. CROWE
Dean of Students

HISTORY

As the oldest land grant college in the United States and the oldest agricultural college in the world, Michigan State College provides a technical, practical and cultural education for its student body, in addition to extensive research and extension services to the people of Michigan.

Now in its 93rd year, Michigan State College has grown from one building and four faculty members to one of the largest universities in the nation. It has approximately 1,400 staff members, 150 modern permanent and 988 temporary buildings, and almost 12,000 acres of land.

In 1855, the course of study at Michigan State College consisted largely of learning the fundamentals of farming by cultivating the college grounds. Today, more than 50 different courses of study are offered in the schools of Agriculture, Business and Public Service, Engineering, Home Economics, Science and Arts, and Veterinary Medicine. This excludes the curriculum of the Basic College which has been hailed as one of the most progressive ideas for higher education in the nation today; and the Graduate

School, which offers courses leading to the degrees of master of arts, master of science, master of music, master of forestry, doctor of philosophy. and doctor of education.

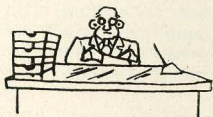
Michigan State College continually strives to expand its service to the people of the state. Five sub-stations of the Agricultural Experiment Station are maintained in various parts of the state, and more than 60 conferences, short courses and special courses are held each year on the Spartan campus. During the 1947-1948 year, more than 40,000 persons attended these "extra-curricular" educational courses and meetings.

Today, some 15,000 students from Michigan and other states and from nations all over the world are attending the college at East Lansing—11,000 of whom are housed on the campus proper. With about 85 per cent of these students coming from communities in every section of the state, Michigan State College is doing its part to fill the greatly increased demand of the younger generation for higher education.

In the agricultural, business and professional fields, Michigan State College has proved its worth to people

of the state of Michigan, paying dividends many times the appropriation for its maintenance made each year by the state and national governments. Noted for its democratic and friendly spirit, the student body harmonizes with the college faculty to make Michigan State College a first class educational institution.

Administration



ADMINISTRATIVE OFFICERS

JOHN A. HANNAH, President (Administration Building)

KARL H. McDONEL, Secretary (Administration Building)

PHILIP J. MAY, Comptroller and Treasurer (Administration Bldg)

STANLEY E. CROWE, Dean of Students and Director of Summer School (Administration Building)

RALPH C. HUSTON, Dean of the Graduate School (Kedzie Chemical Laboratory)

ERNEST L. ANTHONY, Dean of Agriculture (Agricultural Hall)

C. S. BRYAN, Dean of Veterinary Medicine (Veterinary Hospital)

MARIE DYE, Dean of Home Economics (Home Economics Building)

LLOYD C. EMMONS, Dean of Science and Arts (Morrill Hall)

LORIN G. MILLER, Dean of Engineering (Olds Hall)

HOWARD C. RATHER, Dean of Basic College (Basic College Building)

DORSEY R. RODNEY, Dean of Business and Public Service (Morrill Hall)

WILLIAM H. COMBS, Administrative Assistant on Academic Affairs (Administration Building)

JAMES H. DENISON, Administrative Assistant to the President (Administration Building)

ROBERT S. LINTON, Registrar (Administration Building)

Other Administrative Officers

DALE FAUNCE, Counselor for Men (Administration Building)

ISABELLE GONON, Counselor for Women (Administration Building)

HAROLD SPONBERG, Assistant Counselor for Men (Administration Building)

MABEL F. PETERSEN, Assistant Counselor for Women (Administration Building)

DR. CHARLES F. HOLLAND, Director of Health Service (Olin Memorial Health Center)

RALPH H. YOUNG, Director of Athletics (Jenison Gymnasium)

EMERY G. FOSTER, Manager, Dormitories and Food Services (Administration Building)

DEPARTMENT LOCATIONS

- Agriculture—113 A.H.
Agricultural Engineering—216 Ag. Engineering Bldg.
Anatomy—201 Anat.
Animal Husbandry—107 A.H.
Art—36 Art Bldg.
Bacteriology—12 Bact.
Biological Science—201 B.C.B.
Botany and Plant Pathology—10 Bot.
Business Administration—25 B.A.
Chemical and Metallurgical Engineering—413 O.H.
Chemistry—128 K.C.L.
Civil Engineering—104 O.H.
Conservation—409 A.H.
Dairy—216A Dairy
Economics—304 M.H.
Education—224 M.H.
Electrical Engineering—114 O.H.
Engineering Drawing—312 O.H.
English—202 M.H.
Entomology—Ent. Bldg.
Farm Crops—201 A.H.
Farm Management—201 A.H.
Foods and Nutrition—113 H.E.
Foreign Languages—102 Lang.
Foreign Studies—310 M.H.
Forestry—For. Bldg.
Geology and Geography—4 M.H.
History and Political Science—428 M.H.
Home Economics—7 H.E.

- Home Management and Child Development—401 H.E.
Horticulture—203 Hort.
Hotel Administration—34 J.B.
Hygiene and Public Health—12 Bact.
Institutional Administration—4 H.E.
Journalism—28 J.B.
Mathematics—214 M.H.
Mechanical Engineering—1 O.H.
Military Science—1 D.H.
Music—102 M.B.
Parasitology—12 Bact.
Philosophy—11 P.B.
Physical Education, Health and Recreation for Men—216 J.G.
Physical Education, Health and Recreation for Women—1 W.G.
Physical Science—4 M.H.
Physics and Astronomy—103 Phys.
Physiology and Pharmacology—206 V.H.
Police Administration—5 S. Campus
Poultry Husbandry—35 Poult.
Psychology—3 P.B.
Public Administration—223 M.H.
Social Science—428 M.H.
Social Service—219 M.H.
Sociology and Anthropology—14 M.H.
Soil Science—210 A.H.
Speech, Dramatics, and Radio—145 Aud.
Surgery and Medicine—106 V.H.
Textiles, Clothing, and Related Arts—205 H.E.

Veterinary Surgery and Medicine—
106 V.H.
Written and Spoken English—W.S.E.
Zoology—305 M.H.

BUILDING ABBREVIATIONS

Administration Building	Adm. Bldg.
Agriculture Hall	A.H.
Anatomy Building	Anat.
Auditorium	Aud.
Bacteriology Building	Bact.
Basic College Building	B.C.B.
Berkey Hall	B.H.
Botany Building	Bot.
Business Administration Building	B.A.
Chemical Engineering Building	Ch. Engr. Bldg.
Dairy Building	D.
Demonstration Hall	D.H.
Effective Living Building	E.L.
Entomology Building	Ent.
Forestry Building	For.
Home Economics Building	H.E.
Horticultural Building	Hort.
Jenison Gymnasium	J.G.
Journalism Building	J.B.
Kedzie Chemical Laboratory	K.C.L.
Landscape Architecture Building	L.A.
Language Building	Lang.

Literature and Fine Arts	
Building	L.F.A.
Morrill Hall	M.H.
Music Building	M.B.
Olds Hall	O.H.
Philosophy and Psychology	
Building	P.B.
Physics Building	Phys.
Poultry Building	Poult.
Veterinary Hospital	V.H.
Women's Gymnasium	W.G.
Written and Spoken English	
Building	W.S.E.

PERSONNEL DIVISION

Centrally located on the campus is the "Ad" building, which contains the administrative and business offices. On the first floor are the offices of the registrar, who had the responsibility of admitting you to Michigan State College. The offices of the Housing Director who helped you to find your room here are also on the first floor in the new wing. On that same floor is the Placement office. Students beat a path to this door to receive help in finding part-time employment.

The offices of the president, are located on the second floor in the older wing. He is a friend to all the students

and is always gracious to those who go to see him. His Spartan Round Table, where he meets at dinner with other administrators, the presidents of student organizations, provides students an opportunity to discuss with him, informally and frankly, problems which are troubling him as an administrator and questions which the students wish to raise. In these meetings as he puts it "no holds are barred."

Because he is too busy a man to meet you personally, he has delegated to the Personnel division the task of serving you directly and of guiding the general development of all undergraduate students. The Student Personnel offices occupied by the Dean of Students and his staff occupy the top floor of the new wing. To the Dean of Students falls the responsibility of coordinating the work of the Counselor for Men, Counselor for Women, the Registrar, the Director of Housing, the Counseling staff, the Board of Examiners, the pre-college counseling through high school publicity and visitation. He has responsibility too for summer school and for Lecture-Concert series.

The Counselor for Men and the Counselor for Women and their staff

are the persons with whom you will more directly come in contact. Their role is to serve you as individuals and as officers or members of student organizations. They are given the responsibility of helping you in your orientation in your residences, to adjust to group living, and to have a satisfying social as well as academic experience. Your study habits, your standards of conduct are a matter of concern to them as contributory factors in your success and development at college. Their role is an interpretive one to help you understand academic and administrative procedures, and to guide you toward a recognition of your privileges and responsibilities to your student government organizations, Student Council and Associated Women Students.

The Dean of Students, the Counselor for Men and the Counselor for Women are members of standing committees appointed by the President which guide student affairs, such as the Student Loan committee which makes it possible for you to arrange loans from the loan funds of the college, and the Student-Faculty Social committee which regulates the facilities available to the students, so that some organiza-

tions will not have an excessive number of parties to the exclusion of others.

The office of the Counselor for Women has been delegated by the Social Committee as the clearing house for social activities. Student social chairmen receive information here as to procedure for carrying out their plans and register here their parties and their chaperones.

The office of the Counselor for Men has been delegated by the Committee on Student Organizations to act as a clearing house for all student organizations. The Counselor for Men and the Counselor for Women have joint responsibility for student organizations affecting both men and women students.

Constitutions and revisions are submitted to the office of Counselor for Men as chairman of the Faculty Committee on Organizations, for approval by this committee. Lists of members and officers of student organizations are kept on file in the office of the Counselor for Men. A list of members and officers of women's organizations is kept in the office of the Counselor for Women.

As advisors the Counselor for Men and Counselor for Women help the students to assume responsibility, to develop leadership and to delegate responsibility within their organizations to stimulate interest and develop future leaders.

The Counselor for Men has the responsibility for the personnel staff in the men's residences and works closely with them on all matters pertaining to your adjustment and activities there. He is in charge of the Service Men's institute and chairman of the committee on student loans. He works closely with I.F.C., and with fraternity and men's cooperative house advisors.

The Counselor for Women has a similar responsibility for the program of the women's residences, whether they are on or off campus. The personnel staff of all women's residences including off campus householders are responsible to her and work closely with her to help the students assume responsibility for themselves and for each other. As advisors to A.W.S. (Associated Women Students, the student government for women), to W.C.L. (the Women's Cooperative League, the inter-cooperative women's council) and to the Off Campus Coun-

cil, she and her staff help the students to develop standards within their residences, and to plan and carry out group projects and social activities.

The Health Service, Counseling Center, Placement Center, and Testing program, and remedial services such as the speech clinic and adapted sports programs, are all closely correlated in guiding each student.

Directions and Regulations



UNION MEMORIAL BUILDING

The Union Memorial building, located at the entrance of the campus, has served as the center of student activities since 1925. Faculty members, alumni, and visitors also have taken advantage of the many features of the Union.

Now being enlarged, the Union will soon have a cafeteria seating 400 persons, a soda bar and grill with a capacity of 325, 16 bowling alleys, a billiard room, men's and women's lounges, a large mixed lounge, a ping pong room, barber shop, music rooms, meeting rooms, and men's faculty club rooms. The large Union ballroom is the scene of many dances throughout the year.

The college bookstore is located on the first floor in the east wing.

There is a free checkroom for students near the cafeteria. The campus lost and found service is also located in the check room.

Publications Row is on the third floor of the east wing and contains offices of the State News, Wolverine, Spartan magazine, and publications darkrooms. Offices of Student Council, Associated Women Students,

Y.M.C.A., Y.W.C.A., and Independent Students Association, are across the hall.

The second floor of the east wing contains the offices of the union manager, food director, director of activities, alumni association, and two large meeting rooms for student groups.

Tickets for all college functions may be purchased at the Union ticket office.

The Union desk in the lobby sells tobacco, class supplies, magazines and newspapers.

UNION BOARD

Social activities in the Union building are managed by Union Board, a student group, plus the manager of the Union and his director of activities. Union Board is made up of 14 students of junior or senior standing.

HEALTH SERVICE

The health of the student body is under the supervision of the Health Service. This includes a modern hospital with a capacity of sixty beds, and a dispensary which is located in the hospital. All students are entitled to unlimited advice and treatment at the dispensary, a medical examination

by appointment, and sixty days' care in the College Hospital per year. A 25 cent fee is charged for each office call. When the Health Service physician is called to a student's room, the fee is two dollars for a call between 7 a.m. and 7 p.m., and three dollars for a call between 7 p.m. and 7 a.m. No room calls will be made unless the student is unable to come to the hospital. A car will be sent if the student does not feel able to walk. No student is allowed to remain ill in his room longer than 24 hours.

All new students are required to report to the Health Center at an assigned time for a chest X-ray. Failure to do so may result in cancellation of enrollment until rule is complied with. All other compulsory examinations have been suspended until such time as sufficient help makes such a program again practical.

Clinic office hours are: Monday through Friday 8 a.m. to 11 a.m., 2 p.m. to 4:30 p.m.; Saturdays 8 a.m. to 11 a.m. No evening or Sunday hours are kept. The ill student is urged to report to the clinic during the daytime hours and not wait until evening or night. However, admission to the hospital is possible at any hour.

PLACEMENT SERVICE

A placement service, located in the Administration building, aids all MSC graduates, including prospective teachers, who are seeking placement in the field of their specialty. Assistance is also provided for any student seeking full-time or part-time placement.

Women students who desire to work for their room and board in private homes in East Lansing should make application at the office of the Counselor for Women. Women students who desire work in a dormitory should make application to the Manager of Dormitories for Women.

COUNSELING CENTER

Counseling service is available to students in the Counseling Center, Building A-2, South Campus. The purpose of the Counseling Center is to aid students in making their best possible adjustment to college. Toward this end, the counseling staff has been selected on the basis of special training in psychology and student personnel techniques as well as demonstrated ability to work effectively with students and their problems. Complete testing service is provided to aid in

appraising students' aptitudes, interests, emotional and personality traits and related factors. Also, a file of vocational and educational information is maintained in the Center.

In offering these services the Center cooperates closely with the Basic college, since most problems arise during a student's first two years in college. Each non-preference Basic college student is assigned to a counselor in the Counseling Center. The counselors are familiar with all the curricula, and consequently are of service to the student who is in doubt as to what he wished to do in college. Basic college students, other than non-preference are assigned to enrollment officers chosen from the school of the student's preference. These students may use the Counseling Center for help on other problems and should consult with counselors before changing their preference. However, all students whether Basic college school or graduates may use the facilities of the Center.

A student may confer with a counselor about any problem that concerns him. The Center emphasizes clinical and personal counseling that is initiated by the student. It is designed to

assist the student in arriving at suitable solutions to his problems by providing a permissive atmosphere in which the student may express his feelings and thoughts and, with the help of the counselor, gain new insight into his problems and their solutions.

SPEECH CLINIC

Any student who has difficulty with his speech (i.e. stuttering, lisping, nasality, foreign accent) should report to the Speech Clinic for diagnosis and special training. This service is given free of charge to regularly enrolled students. No credit is given. A clinic for persons not enrolled in the college is held each Saturday between 9 and 11:30 a.m. Free diagnosis and a limited amount of treatment are available to residents of the state. This clinic is open only when school is in session. It is held in 247 Auditorium.

LIBRARY HOURS

The College Library is open from 7:30 a.m. to 10 p.m., Monday through Friday; from 7:30 a.m. to 6 p.m. on Saturday, and from 2 p.m. to 6 p.m. on Sunday.

COLLEGE BOOK STORE

The college bookstore, located on the first floor of the Union annex, is operated under the management of the college for the purpose of selling books and other materials to students. This bookstore stocks all textbooks in current use. Veterans may obtain books and supplies there in exchange for book cards issued them at registration.

SOCIAL RULES FOR MIXED STUDENT GROUPS

The Student-Faculty Social committee, appointed by the President, is composed of ten members including a representative of the Student Council, the Interfraternity Council, the Pan Hellenic Council, and Associated Women Students, and the Married Housing Area. Faculty members include the Dean of Students acting as chairman of the committee, the Counselor for Men, the Counselor for Women, and two staff members. Secretary of the Committee is the Assistant Counselor for Women.

Meetings of the committee are held at the start of each term and at other times when dictated by necessity.

The function of the committee is to administer the social rules, approve facilities used for parties, deal with petitions for parties, supervise the registration of social functions, review infractions of social rules, and establish and enforce attendant penalties. This committee has authority to govern all affairs at which mixed student groups are in attendance.

All social chairmen of campus organizations should be familiar with the social rules for party registration and procedure. Copies of these rules should be picked up at the Counselor for Women's office. A few of the rules are outlined below:

1. Registration procedure.
 - a. Facility must be reserved.
 - b. Parties must be registered at the Counselor for Women's office not later than Tuesday of the week preceding the week in which the affair will be held.
 - c. Chaperons must be registered at the Counselor for Women's office not later than Thursday of the week preceding the week in which the affair is to be held.

- d. In event of cancellation of a party previously registered, notification must be given to the Counselor for Women's office.
- e. All social chairmen must call for a copy of the social procedure at the Counselor for Women's office.

NOTE: The regulation barring liquor and beer from the campus and all college-operated facilities is as old as the college. The bringing of liquor or beer onto the campus or into any building or facility operated by the college, and the drinking of beer or liquor on the campus or in any college-operated building or facility are prohibited alike. Known violators are, without exception, automatically suspended from college.

CAMPUS TRAFFIC RULES

Section I — Student Regulations

1. Michigan State College students are prohibited from operating any motor vehicle until such vehicle has been registered with the college police department. Permission to drive ve-

hicles will be granted at the discretion of the Chief of Police. Registration of student cars must be renewed at the beginning of each school year. Old permits expire October 1 of each year.

2. The following rules will govern the issuance of permits and tags:

- a. Health or physical reasons. For obvious physical disabilities or on the recommendation of the college Health Service. Permanent or temporary permits may be issued.
- b. Business use. Upon written request from employer stating need and agreeing to notify college police of termination of employment.
- c. Commuters living two or more miles from the campus and a reasonable distance from transportation facilities. College police will be notified within five days of any change of address.
- d. Married students living with their families.

3. Special parking and driving permits will be provided for emergencies.

4. Students making application for driving permits must present evidence of public liability (\$10,000) and property damage (\$5,000) insurance.

- a. An operator's or chauffeur's license issued by the state in which the vehicle is registered.
- b. Title or certificate of registration for the vehicle to be operated.
- c. If under twenty-one (21) years of age this application must be accompanied by the written consent of parent, and registered owner of vehicle if parent and owner are not the same person.

5. These automobile regulations govern the use of motor vehicles as well as the operation. Violations of existing traffic regulations, or conduct prejudicial to the interests of the community, may result in revocation of permits.

6. Student tags issued for campus driving will be rigidly attached in a conspicuous position on the rear license plate. Registration forms permitting students to drive a vehicle must be carried at all times while driving on campus.

7. The rules and regulations for driving, parking, and control of automobiles on the campus are binding on all students. Copies of these regulations may be obtained from the college police department.

8. An automobile can be registered in the name of only one student and that student is responsible for the conduct of the car and the people in it.

9. Any student receiving a traffic violation ticket who does not report with the ticket within 72 hours shall have his campus driving permit revoked.

10. Any student receiving three or more traffic violation tickets during any one school year shall have his campus driving permit revoked. The college police will notify the Dean of Students of such action.

11. Any student transporting intoxicating liquor in an automobile at any time or place, shall be subject to disciplinary action.

12. Any student driving an automobile after his permit has been revoked may be subject to expulsion from school.

13. Any student driving a car registered as a faculty or employee car for his or her own personal use shall park same in student parking lot only.

14. Student permits shall be revoked for a minimum period of three months.

15. Schedule of fines:

Driving in Prohibited Areas—\$2.00

Failure to Park in Designated Areas
—\$2.00

Failure to Register Vehicle—\$5.00

Failure to Park in Designated Area
and not Displaying Student Tag—
\$5.00

Second Offense—\$5.00

Third Offense—\$10.00 and Revoke Per-
mit

Fourth Offense—Referred to Dean of
Students

Fines are payable at the cashier's
office in the Administration Building.

PHYSICAL EDUCATION, HEALTH AND RECREATION FOR MEN

Physical Education is required of all men students during the freshman and sophomore years, or until completion of six quarters of Physical Education, unless excused by the Health Service. Veterans of the Armed Forces are exempt from Physical Education on the same basis as they are exempt from Military Science. Exemption certificates must be secured by the student from the Registrar and presented at the time of the enrollment. If for any reason a course is deferred, it must be made up.

Students with marked physical handicaps are assigned by the Health Service to courses in Adapted Sports. Students may not receive credit in the same course more than once, except in P. E. 104 (Adapted Sports). Students exempt from Physical Education will not receive credit therefor.

Students are required to purchase a complete standard gymnasium outfit consisting of shirt, shorts, socks, supporter, and shoes. These outfits are on sale at the Gymnasium store.

The courses in Physical Education consist of the Service Curriculum and the Professional Curriculum.

Service Curriculum. This Curriculum is prescribed for all freshman and sophomore students who are required to take Physical Education, Health and Recreation. It is grouped into Aquatics, Games, Stunts, and Combatives. First year students are required to complete one course in Aquatics and courses in two of the other three groups.

Professional Curriculum. This curriculum is prescribed for students who are majoring in Physical Education, Health and Recreation.

**PHYSICAL EDUCATION, HEALTH
AND RECREATION FOR WOMEN**

Physical Education is required of all women students during the freshman and sophomore years, or until completion of six quarters of Physical Education, unless excused by the Health Service. Veterans of the armed forces are exempt from Physical Education: six month service, one year exemption, 12 month service, two years exemption. Students who have reached their thirtieth birthday are exempt from Physical Education. Exemption certificates must be secured by the student from the Registrar and presented at the time of enrollment. If for any reason a course is deferred, it must be made up.

All freshmen and all new students in the College who are required to enroll in Physical Education, Health and Recreation for Women are given a physical examination at the Women's Gymnasium by members of the staff of the Department.

All students are required to have gymnasium suits. In order to insure uniformity they should be purchased at the Gymnasium store. The outfit consists of short bloomers, gymnasium

shoes, dance costume, tank suit and cap. The various articles may be purchased from time to time as required.

The courses in Physical Education, Health and Recreation consist of the Service Curriculum and the Professional Curriculum.

Service Curriculum. This curriculum consists of courses for freshman and sophomore students who are required to take Physical Education, Health and Recreation. Freshmen are required to elect work in courses 141 to 188 inclusive. Sophomores are required to elect work in courses 250a to 385 inclusive.

Professional Curriculum. This curriculum is prescribed for students who are majoring in Physical Education, Health and Recreation.

ROTC

The military program at Michigan State College consists of basic and advanced courses in the senior division of the Reserve Officers Training Corps established by the National Defense Act.

ROTC is supervised by the Department of the Army in Washington, D.C. and is divided into two parts, basic,

which is required of all non-veteran physically fit men students; and advanced which is optional. Each part requires six terms to complete.

The basic course requires four hours per week for 1½ credits. The advanced course requires five hours per week and attendance at a six-weeks summer camp. The advanced course is for three credits.

All students completing the advanced course are eligible for commissions in the Officer's Reserve Corps, and those who are designated as Distinguished Military Graduates are eligible for commissions in the Regular Army.

Students who believe they are exempt from the basic course should consult the Registrar, Robert S. Linton, in the Administration building.

Full college credit for the basic ROTC course and eligibility for the advanced course will be granted those who:

1. Have served one full year or more in the Army, Navy, Marine Corps, or Coast Guard during the period, January 1, 1941 through March 2, 1946.
2. Have successfully completed two years work at the United States Mili-

tary Academy, The United States Naval Academy, or The United States Coast Guard Academy.

Men students with less service time should consult the Registrar.

Statements of exemption from basic ROTC must be obtained from the registrar and presented at the time of enrollment.

A contract between the United States Government and the advanced ROTC student is signed at the time of enrollment in the advanced course which requires that the student complete the course and attend summer camp. The contract specifies that the student be paid an amount equal to the commuted U. S. Army ration.

Basic students must pass a physical examination equal to the minimum requirements for enlistment in the army. Advanced students must pass a physical exam equal to the minimum requirements for a commission in the army.

OFFICE OF ALUMNI RELATIONS

The office of Alumni Relations, directed by Tom King is located on the second floor of the Union Annex. Here

records are kept on all graduates and former students of the college.

The "Record," the Alumni publication, is sent free of charge to all alumni whose addresses are available. Further services include sending out information to alumni clubs concerning new graduates in their areas, organizing new clubs and furnishing speakers for club meetings.

MEN'S DORMITORIES

Abbot Hall—8-5005
Mason Hall—8-5041
Phillips Hall—8-1501
Quonset Village—8-1566
Snyder Hall—8-1553
Wells Hall—8-5051

WOMEN'S DORMITORIES

North Campbell—8-5081
South Campbell—8-3563
East Landon—8-2557
West Landon—8-2506
East Mary Mayo—8-2591
West Mary Mayo—8-3513
North Hall—8-3568
North Williams—8-3571
South Williams—8-5086
East Yakeley—8-1591
West Yakeley—8-5021

MEN'S COOPERATIVE HOUSES

- Asher House—417 Bailey, 8-7037
Bower House—708 W. Michigan, 8-5937
Ellsworth House—218 Albert, 8-3591
Hedrick House—903 E. Grand River,
8-3632
Howland Student Co-op—323 Ann
Street
Motts House—117 Louis, 8-1440
Ulrey House—532 Abbott Rd., 8-2447

WOMEN'S COOPERATIVE HOUSES

- Benson House—321 M.A.C., 8-4744
Catherine Black House—118 Albert,
8-1429
Concord House—129 Division, 8-4538
Ewing House—307 Abbott Rd., 8-1843
Potter House—334 Evergreen, 8-3341
Robinson House—123 Albert, 8-1730
Rochdale House—406 M.A.C., 8-2636
Sanford House—432 Abbott Rd., 8-3334

F R A T E R N I T I E S

- Alpha Epsilon Pi—318 Elm Place, 8-1338
Alpha Gamma Rho—803 E. Grand
River Ave., 8-4629
Alpha Phi Alpha—110 Mason Hall,
8-5041
Alpha Tau Omega—451 Evergreen,
8-2575
Beta Tau—247 Delta, 8-2571 or 8-2572

- Delta Chi—101 Woodmere, 8-4439
Delta Rho—
Delta Sigma Phi—1212 E. Grand River
Ave., 8-5065
Delta Tau Delta—335 E. Grand River
Ave., 8-5122
FarmHouse—526 Sunset Lane, 8-3553
Kappa Epsilon—522 Bailey, 8-3875
Kappa Sigma—224 Michigan Ave.,
8-2128
Lambda Chi Alpha—128 Haslett, 8-1225
Phi Delta Theta—626 Cowley, 8-5329
Phi Kappa Tau—223 Delta, 8-3577
Pi Kappa Phi—
Psi Upsilon—810 W. Grand River Ave.,
8-3026
Rho Beta—
Sigma Alpha Epsilon—131 Bogue,
8-3941
Sigma Chi—729 E. Grand River Ave.,
8-2839
Sigma Nu—444 Abbott Rd., 8-4696
Theta Chi—453 Abbott Rd., 8-3581
Zeta Beta Tau—

SORORITIES

- Alpha Chi Omega—548 M.A.C., 8-5063
Alpha Gamma Delta—139 Bailey, 8-2511
Alpha Omicron Pi—505 M.A.C., 8-2519
Alpha Phi—616 M.A.C., 8-5061
Alpha Xi Delta—413 Hillcrest, 8-4637
Chi Omega—239 Oakhill, 8-3555

Delta Gamma—327 Hillcrest, 8-3528

Delta Zeta—523 Abbott Rd., 8-3579

Gamma Phi Beta—314 Evergreen,
8-1128

Kappa Alpha Theta—303 Oakhill, 8-2567

Kappa Delta—421 Abbott Rd., 8-3337

Kappa Kappa Gamma—605 M.A.C.,
8-2569

Pi Beta Phi—215 Evergreen, 8-3938

Sigma Kappa—518 M.A.C., 8-2515

Zeta Tau Alpha—207 Bogue, 8-3241

MARRIED HOUSING

M.S.C. Trailers—8-1617

Women's Cooperative League

The eight cooperative houses for women are represented by a women's cooperative league composed of one representative elected from each house. Through weekly meetings the council studies coordination of the work of the individual houses and cooperation with other college organizations in activities.

Women's cooperative houses at MSC are unique in that they are semi-cooperative. This means that the women students plan the menus, and do all cooking, cleaning and schedule mak-

ing, while the resident director is the buyer and advisor.

Residence in a cooperative house provides excellent opportunity for training in group living and home management.

Applicants for women's cooperative housing must present three recommendations indicating their good citizenship and adaptability to cooperative living. Information about women's cooperative housing may be obtained at the Housing Director's office.

CAMPUS CHURCHES

College Lutheran Church—Division at
Ann St. (Rev. H. C. Wolf)

Episcopal College Center—445 Abbott
Road. (Rev. William B. Clebsch)

First Church of Christ Scientist—
314 M.A.C. Ave.

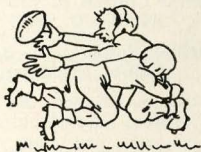
Hillel Foundation—319 Hillcrest Ave.
(Rabbi Friedman)

Peoples Church—200 W. Grand River
Ave.

St. Thomas Aquinas—601 Abbott Road.
(Fr. J. V. MacEachin)

Unity Association—309 Orchard St.

Activities and Sports



COLLEGE CALENDAR — 1948-49

Fall Quarter

- Sept. 13—Last day for filing credentials without penalty.
16—Entrance examinations.
18—Auditions in applied music and music tests.
20-24—Orientation week and registration.
21, 22—Foreign film, "King's Jest-
ter."
23, 24—Foreign film, "Volpone."
25—University of Michigan foot-
ball here.
27—Classes begin.
27—New York Philharmonic Or-
chestra (lecture-concert)
27-29—Fall term tryouts all stu-
dent productions.
- Oct. 1—All College dance, Audi-
torium.
2—Last day for adding courses
or changing sections.
2—Football, University of Ha-
waii here.
2—Curtis Nagel (lecture-concert)
4—Foreign film, "Farrebique."
6, 7—Opera, "Romeo and Juliet."
9—Murl Dusing (lecture-con-
cert).

- 9—Track, Notre Dame at South Bend, Ind.
- 9—Football, Notre Dame at South Bend, Ind.
- 11—"Antoine et Antoinette," foreign film.
- 12, 13—Ballet Russe de Monte Carlo.
- 16—Football—University of Arizona here.
- 16—Homecoming dance.
- 18—"Naked Fury" (foreign film).
- 23—Last day for dropping courses.
- 23—Harvest Ball, Women's Gym.
- 23—Alfred Wolff (lecture-concert)
- 25—Two year agricultural short course begins.
- 25—RCA Victor show (lecture-concert).
- 26-29—Extension conference.
- 27—Clifton Fadiman (lecture-concert).
- 28, 29, 30—Experimental theater.
- 29—IFC-PanHel Dance.
- 30—John Ott, Jr., (lecture-concert)
- 30—Last day for withdrawal with one-half course fee refund.

Nov. 1—Foreign film.

- 2—Vienna Boy Choir (lecture-concert).
 - 5—Soph Ball, Auditorium.
 - 5, 6—Children's Theater.
 - 6—Herb and Lois Crisler (lecture-concert)
 - 8—Margaret Webster Shakespearean group (lecture-concert).
 - 9—Rebecca West (lecture concert).
 - 13—Lowell Thomas, Sr. (lecture-concert)
 - 17, 18, 19, 20—Term play.
 - 18—Entrance Examinations.
 - 19—Last day for applying for diploma fall term.
 - 19—Coronation Ball.
 - 20—Football, Washington State here.
 - 20—College Carousel.
 - 22—NCAA Track Meet here.
 - 22—Kermit Roosevelt (lecture-concert).
 - 25-28—Thanksgiving recess.
 - 27—Clifford Kamen (lecture-concert).
 - 29—Foreign film.
 - 30—Eva LeGalliene (lecture-concert).
- Dec. 2, 3, 4—Studio Theater.

- 2—Carey McWilliams (lecture-concert).
- 3—Last day for clearing deficiencies fall term.
- 4—I S A Dance.
- 4—Michigan basketball at Ann Arbor.
- 4—John Craig (lecture-concert).
- 5—Band Concert, Auditorium.
- 6—Foreign film.
- 8—Bennett Cerf (lecture-concert).
- 9-17—Final examinations.
- 12—Christmas Concert, Auditorium.
- 17—Fall quarter closes.
- 18—Iowa at East Lansing, basketball.
- 20—Cornell at East Lansing, basketball.
- 29—Mississippi at East Lansing, basketball.

Winter Quarter

- 30—Entrance examinations.
- Jan. 3-5—Registration of students.
- 5—Winter short courses begin.
- 6—Classes begin.
- 6—Max Eastman (lecture concert).
- 7—Basketball, Marquette here.

- 8—Lowell Thomas, Jr. (lecture-concert).
 - 10—Basketball, Detroit here.
 - 12—Last day for adding courses or changing sections.
 - 13—William Laurence (lecture-concert).
 - 14—Basketball, Western Reserve here.
 - 15—Robert Stanton (lecture-concert).
 - 17—Jussi Bjoerling (lecture-concert).
 - 19—Helen Kirkpatrick (lecture-concert).
 - 22—Cleveland Grant (lecture-concert).
 - 24-28—Farmer's Week.
 - 26—Minneapolis Symphony (lecture-concert).
 - 27—Basketball, Wayne here.
 - 27—John Mason Brown (lecture-concert).
 - 29—Alan Villiers (lecture-concert).
 - 31—Basketball, Michigan here.
- Feb. 2—Last day for dropping courses.
- 2—Trudi Schoop (lecture-concert).
 - 4—Licia Albanese (lecture-concert).

- 5—Count Byron de Prorok (lecture-concert).
 - 8—Last day for withdrawal with one-half course fee refund.
 - 8—Walter Duranty (lecture-concert).
 - 11, 12—J-Hop.
 - 12—Basketball, Purdue here.
 - 14, 16—Vladimir Horowitz (lecture-concert).
 - 14—Basketball, Minnesota here.
 - 17—Entrance Examinations.
 - 17—Archibald MacLeish (lecture-concert).
 - 19—Basketball, Virginia here.
 - 19—Karl Robinson (lecture-concert).
 - 22—Basketball, Notre Dame here.
 - 22—Last day for applying for diploma winter term.
 - 23, 24, 25, 26—Winter term play.
- Mar. 4—Eight week short course closes.
- 4—Senior Ball.
 - 5—Frederick Machtetanz (lecture-concert).
 - 6—Band concert.
 - 8—Herbert Agar (lecture-concert).
 - 10—Burl Ives (lecture-concert).
 - 12—Herbert Knapp (lecture-concert).

- 13—Orchestra concert.
- 14-22—Final examinations.
- 18, 19—High school basketball tournament.
- 22—Winter quarter closes.

Spring Quarter

- Mar. 24—Entrance Examinations.
- 28, 29, 30—Registration of students.
- 31—Classes begin.

- April 2—John Jay (lecture-concert).
- 4—Robert Shaw chorale (lecture-concert).
- 5, 6, 7, 8—Dionysians production.
- 6—Last day for adding courses or changing sections.
- 9—Peter Koch (lecture-concert).
- 16—Vincent Palmer (lecture-concert).
- 20—Nadine Conner (lecture-concert).
- 27—Last day for dropping courses.
- 28—Entrance examinations.

- May 6—Last day for applying for diploma spring term.
- 8, 9, 10—Beethoven festival.
- 18, 19, 20, 21—Spring term play.
- 20—Last day for clearing deficiencies spring term.

28—Lower peninsula state track meet.

June 4—Alumni Day.

5—Commencement.

7-15—Final examinations.

15—Spring quarter closes.

LECTURE - CONCERT SERIES

Each year great symphonies, world renowned singers, ballet companies, and speakers on literature, science, national and international affairs are brought to the campus. Students exchange activity book coupons for tickets at the Union ticket office. The ticket, activity book and student identification are necessary for admittance at the door of the auditorium. A schedule of events is posted at the Union ticket office and is printed in the State News.

INTERNATIONAL CENTER

International Center, operated by the all-college International Institute, functions with a three-fold purpose. It helps to acquaint foreign students with the American way of life, provides opportunities for local students and townspeople to meet foreign students, and strives to foster and pre-

serve international good-will and friendship.

Thirty-seven foreign countries are represented at MSC by students and professors. International Center is directed by Dr. Shao C. Lee, of China, who is aided by an advisory committee appointed by President Hannah.

Open houses and "get acquainted teas" are held frequently to emphasize that local students as well as foreign students are invited to participate in all activities. Cultural groups hold weekly discussion meetings. Friday evenings the club sponsors social gatherings, and forums are held Sundays.

Foreign interest and language groups, such as the French and Latin clubs, have meetings within the Center. Special events sponsored by these clubs include an annual Cosmopolitan Ball and International Festival, holiday parties and foreign programs.

Weekly radio talks, speaker and information services, and personal help to students are among the Center's other activities. It also sponsors a monthly publication, the MSC International Center News, a library and art exhibitions.

MUSIC

In addition to the regular courses offered by this department, there are now many extra curricular student activities open to both men and women. Tryouts for these organizations are held in the opening week of fall term, the time of the actual tryouts being announced on the various bulletin boards on the campus. This group includes the Michigan State College Band, the Symphony Orchestra, the Women's Glee Club, the Men's Glee Club, the Chorus and the A Cappella Choir. All these organizations give public concerts at intervals throughout the year. The Orchestra offers a series of concerts and accompanies one artist on the Concert Course in a concerto; and the Band will continue its open air concerts in the spring term. besides appearing at athletic events throughout the year.

A Concert Series was instituted for the music auditorium to meet the need for soloists and chamber music recitals in more intimate surroundings than those provided by the college auditorium. Music majors are admitted without charge, but any student may purchase a season ticket for a small sum. Typical of the outstanding ar-

tists to be enjoyed are Huberman, violinist; the Budapest String Quartet; Lotte Lehman, soprano; and John Kirkpatrick, pianist.

Further information concerning the Department of Music and its activities may be obtained at the office in the Music Building.

STUDENT COUNCIL

The Student council is the elective body representing and directing the activities of all undergraduate students. Its powers include legislation concerning student affairs, and recommendation to the administration on matters between the students and faculty or administration. Control of student elections, supervision of all honoraries, and action on matters pertaining to the student body are more of the functions of Student council, which strives to bring closer understanding and cooperation between students and faculty.

Representatives are elected to the Student council from living districts which the council designates. Elected representatives must live in the district from which they were elected during the tenure of their office. All Student council members must maintain an all-college one-point.

During the past year, Student council has co-sponsored the Mardi Gras, the Homecoming celebration, and the publication of this handbook. These are but a few of the many activities of the Student council.

**CONSTITUTION OF THE STUDENT
GOVERNMENT OF MICHIGAN
STATE COLLEGE**

Preamble

We, the students of Michigan State College, recognizing that the purpose of this institution is to train young men and women in the higher ideals of citizenship; and believing that a representative student government to assist the faculty in maintaining orderly supervision of student affairs and organizations is essential to this end, do establish this constitution.

Article I — Legislative

Section 1. All legislative functions of the student government shall be vested in the Student Council.

Section 2. Representation on the Student Council shall be accorded by districts, as provided in the Ordinances of the Student government.

Section 3. Ex-officio representation shall be accorded the Counselor of Men and the Counselor of Women.

Section 4. All legislation pertaining to the student body shall be in the

form of Ordinances of the student government.

Section 5. Ordinances of the student government shall become effective upon receiving a majority of those votes cast on the question.

Section 6. Standing rules of the Student Council shall become effective upon receiving a two-thirds majority of those votes cast on the question at two consecutive regular meetings. They shall provide for the conduct of Council business including:

- (a) Frequency of regular meetings.
- (b) Parliamentary authority for those procedures not covered in this constitution.
- (c) Compilation and publication of all Ordinances of the student government.

Section 7. Special meetings of the Student Council shall be called by the President upon written request of twenty-five per cent of the active members.

Section 8. Two-thirds of the active members of the Student Council shall constitute a quorum.

Section 9. The Student Council may, by two-thirds majority vote, expel any

officer or member of the student government for cause.

Article II — Executive

Section 1. The executive functions of the student government shall be vested in the office of the President of the student government.

Section 2. At the fourth meeting following the election of new members of the Student Council the Council shall elect by secret ballot, from among its members, a President, Vice President, Secretary and Treasurer. Balloting shall continue until one candidate shall receive a clear majority. Those elected shall hold office from the time of their election until such time as succeeding officers shall have been installed. Nominations for these offices shall not be made before the third meeting of the new Student Council.

Section 3. The President may call special meetings of the Student Council upon twenty-four hour notice.

Section 4. The President shall:

- (a) With the consent of the Student Council, fill all vacancies on the Student Council by ap-

pointment of a qualified resident of the district in which the vacancy occurs.

- (b) Be advised and assisted by an Executive Board composed of:
 - (1) President of Men's Council.
 - (2) Presidents of Associated Women Students, Activities Board and Judiciary Board
 - (3) President of Union Board.
 - (4) Class Presidents.
 - (5) Chairmen of such Student Council standing committees as the President deems necessary.

Section 5. The Vice President shall assume the duties of the President in the event of the President's absence or removal.

Section 6. The Secretary shall maintain complete records of the student government, and perform other duties generally expected of a secretary.

Section 7. The Treasurer shall prepare and submit for Council approval, at the second meeting of the fall term, a budget for the ensuing year, and perform other duties generally expected of a treasurer.

Article III — Amendments

Section 1. Amendments to this constitution may be proposed by the Student Council or by a petition signed by five per cent of the regularly enrolled undergraduate student body.

Section 2. Proposed amendments shall be put to the vote of the student body at the next succeeding regular general college election, or, if the cause is deemed sufficient by the Student Council, at a special vote for that purpose by the Student Council.

Section 3. The proposed amendment, together with the parts affected by the amendment, shall be published in the MSC student newspaper on at least four separate days during the two weeks prior to the vote.

Section 4. Proposed amendments, upon receiving the affirmative vote of a majority of those votes cast on the issue, and having been approved by the faculty of this institution, shall immediately become a part of this constitution.

Article IV — Adoption

Section 1. This constitution shall be declared adopted immediately following faculty approval and a majority

affirmative vote of those students voting on the question. It shall take effect immediately upon adoption.

ASSOCIATED WOMEN STUDENTS

A.W.S. are the initials representing the women's self-governing body. Every undergraduate becomes a member upon registration, privileged to vote in all A.W.S. elections. Business of the association is carried on by activities and judiciary boards.

The Judiciary board is the law enforcing agency of A.W.S. Its purpose is to supervise all matters pertaining to the social conduct of the women students and to interpret and enforce rules governing conduct. The Activities Board considers plans for women's activities, helps finance worthy projects, and formulates social policies. It is composed of elected members from sixteen women's organizations.

The A.W.S. aids in college residence elections each term, conducts leadership training, the Big Sister program and Lantern Night. It helps sponsor freshman orientation and the annual Spinster Spin.

Further particulars may be obtained at the A.W.S. office in the east wing of the Union.

MEN'S COUNCIL

Men's Council coordinates the activities of all men's organizations and presents men's problems to the administration and to the Student Council. Any men's organization on campus may become a member of this governing body by petitioning for and being accepted by a two-thirds vote of the council.

INTERFRATERNITY COUNCIL

The Interfraternity council is an organization set up by social fraternities on campus for the purpose of promoting the interests of Greek letter societies. Among the functions of the IFC is the sponsoring of rushing smokers and open houses through which the active members of the fraternities become acquainted with other students who are interested in joining a social fraternity.

The IFC consists of two representatives from each of the nineteen social fraternities on campus and acts as a representative of these groups in matters concerning the student body and college administration. Other activities of the council include the sponsoring of intramural athletics for member

fraternities, awarding of a trophy to the group having the highest scholastic average throughout the school year, and the sponsoring of a test given to all pledges before they may take active initiation in a fraternity.

PANHELLENIC COUNCIL

PanHellenic Council, nicknamed "PanHel," composed of two representatives from each of State's sixteen national sororities, is the supervisory board of sororities. Its purpose is to maintain high standards of fraternity life and govern interfraternity relations within the college.

Projects include sponsoring Towar Gardens, the Sorority Sing and Greek Week, and supervising all rushing. PanHel also organizes the sorority side of the Interfraternity-PanHel Dance.

BIG-SISTER COUNCIL

Headed by two co-chairmen and made up of voluntary upperclassmen, the Big Sister Council system aims to help freshmen and transfer women to become acquainted with, and make adjustments to life at Michigan State.

In the spring, women wishing to be councilors are given a brief train-

ing course to acquaint them with their duties as "big sisters." The "big" and "little" sisters correspond during the summer, and contact each other when they arrive on the campus. It is the duty of the "big" sister to be confident, friend and guide for her "little" sister, both in social and scholastic matters.

WOMEN'S ATHLETIC ASSOCIATION

The Women's Athletic Association program on the Michigan State College campus is varied in scope to appeal to all coeds. In an attempt to completely fulfill its purpose, W.A.A. organizes and executes two activity programs, intramural and interclass.

Intramural Program

The intramural program, which does not require any particular skill, is set up for competition between dormitories, sororities, co-ops and other organizations. Competition in volleyball, swimming, bowling, golf, tennis, and softball is included in the year's schedule of play.

Each organization which wins a championship in any particular sport

is presented a trophy and the Women's Intramural Trophy is awarded in the spring to the group that has won the highest number of points competing in the six sports. This trophy becomes the permanent property of any group which manages to win it three years in succession.

Interclass Program

The W.A.A. Interclass program furnishes competition to the more skilled coeds on the campus. Sports included in the interclass competition are hockey and soccer in the fall term; basketball and bowling in the winter term; and softball in the spring term. Individual activities, such as bicycling, canoeing, hiking, horseback riding, ice skating and roller skating are also included in the interclass program.

Annual Events

W.A.A. sponsors three annual events each year: a hike to the W.A.A. cabin for freshmen held early in the fall term; a cross-country hike for all coeds also held fall term; and an overnight canoe trip on the Red Cedar held spring term.

Telegraphic Meets

In addition to the intramural and interclass programs, skilled coeds compete in the National Telegraphic Meets in bowling, swimming, and archery. Scores are telegraphed to colleges and universities throughout the United States.

Governing Board

Directing and supervising the W.A.A. programs is the Women's Athletic Association Board of six student officers elected each winter term. Also on the board are ten sport managers drawn from the various activities.

Membership

All coeds on the MSC campus are automatically members of W.A.A. but only those who have earned 100 activity points within the organization are considered eligible to vote. Points are allotted to each W.A.A. activity.

D R A M A T I C S

Any student in good academic standing is invited to try out for the major play presented each term by the department of Speech and Dramatics and Theta Alpha Phi, national dra-

matics honorary. The major term play is presented in Fairchild Theater for four night's duration. Tryouts will be held at the beginning of each term.

Freshmen and sophomores are urged to try out for Studio Theater productions. The Studio Theater presents a series of one-act plays and one full-length play each term in room 49 Auditorium. The organization's 85 members are chosen at the beginning of fall term on a trial basis. Studio Theater is a group which trains students who are not experienced enough to be given a part in the major term play.

Tryouts are also held each term for Children's Theater, a department-sponsored group which presents plays to an audience of children in Fairchild theater and on state tours.

Backstage workers are needed for each production to arrange set design, costume work, lighting, and stage management.

BOARD OF PUBLICATIONS

The Board of Publications supervises the six campus publications by approving appointments to staffs and acting in an advisory capacity. The seven-

man board is composed of the managing editor of The State News, Wolverine editor, and a third student member selected by vote, with the dean of students, administrative assistant to the president, college comptroller, and head of the Journalism department.

THE MICHIGAN STATE NEWS

The Michigan State News, daily student newspaper, welcomes any student who wishes to work on its staff. The State News offices are on the third floor of the east wing of the Union building. Positions on the newspaper in editorial, advertising, and circulation departments are open to any student in good standing.

THE WOLVERINE

The Wolverine, college yearbook, is published late in the spring term. It presents a panoramic view in stories and pictures of the important events on the campus during the school year. Including a survey of departmental activities, athletics, classes, and campus features, the Wolverine depicts the highlights of college life. The Wolverine offices are on the Union building's third floor of the east wing.

SPARTAN MAGAZINE

The Spartan magazine is a student monthly publication devoted to interviews, sketches, essays, fiction, poetry, cartoons, pictures, and columns, both serious and humorous. Offices of the magazine are located on the third floor of the east wing of the Union building.

MSC VETERINARIAN

A quarterly magazine published by students of the School of Veterinary Medicine for the profession. Articles of interest to the field of veterinary medicine are included in this official publication of the student chapter, MSC Veterinary Alumni association.

SPARTAN ENGINEER

Students of the School of Engineering publish this quarterly magazine which serves as a professional magazine but contains many articles of interest to students of engineering.

THE HOMESTEADER

The Michigan State Homesteader is an outlet for the exchange of students' ideas on problems in agriculture and

home economics, which aims to integrate the schools of agriculture and home economics. The student magazine is published from room 112, Agriculture hall. Any student interested in agriculture or home economics may work on either the editorial or business staff.

ORGANIZATIONS

Announcements of Meetings in State News

Alpha Epsilon Rho—Honorary radio fraternity is made up of students who have participated in radio programs in the capacity of actor, writer, director, producer, or sound effects technician. Radio broadcasts are prepared and presented by members of this organization.

Alpha Psi — Veterinary medicine honorary, requires a high academic rating for membership and sponsors trips to laboratories for members.

Alpha Zeta — Agricultural honorary, limits membership to men who rank in the upper two-fifths of their classes. A field day is sponsored each year.

Beta Alpha Sigma—Landscape architecture and allied arts honorary, is made up of upperclassmen who have achieved an above average scholastic rating in their field of landscape architecture or the allied arts.

Delta Phi Delta — Art honorary. Sponsors art workshops, trips to art centers, lectures and exhibits. The honorary cooperates with the Lincoln community center.

Kappa Alpha Mu — Photographic honorary of the Journalism department. Membership is limited to talented and interested photo-journalists of sophomore class standing or higher. Photographic exhibits are sponsored.

Kappa Alpha Sigma—Honorary floriculture sorority, admits to membership women floriculturists with a high point average in horticulture courses.

Kappa Delta Pi—Education honorary, sponsors talks by speakers who present the chief educational problems of the present day. Limited to upperclassmen with a high scholastic standing.

Omicron Nu—Home economics honorary promotes scholarship, leadership, and research in home economics. Membership is limited to junior and

senior home economics majors who maintain a high scholastic average.

Phi Kappa Phi—National scholastic honorary for all departments of the college. Members are those students who have attained the highest scholastic averages. Scholastic awards are presented to outstanding freshmen and sophomores.

Pi Kappa Delta—Interest group in forensics is open to all interested students who have participated in a specified number of debates, or in oratory or extemporaneous speaking contests.

Pi Mu Epsilon—Mathematics honor society, composed of students interested in mathematics who have attained a high scholastic average in that field.

Scabbard and Blade—Honorary for the advanced corps of cadets. Eligible students are notified by their first sergeant and upon expression of desire to affiliate, are considered for membership.

Sigma Delta Pi — Spanish language honorary limits membership to students who have completed three college years of Spanish or the equiva-

lent, with a high scholastic average in that study.

Tau Beta Pi—Engineering honorary honors outstanding students in the field and functions as an engineering service organization.

Tau Sigma—Honorary for students in the schools of science and arts, or business and public service. The organization distributes an effective study booklet to freshmen.

Agricultural Extension Club — Local organization which limits membership to students who are interested in agricultural and home economics extension activities.

The Alethians—The campus philosophy club for all interested in the study of philosophy who are cooperative in discussion and tolerant of the attitude of others.

Amateur Radio Club—Local group owns an amateur radio station on campus. Senior members are licensed amateurs and supervise other members who wish to use the club's radio equipment.

MSC Band—Plays at football and basketball games, at commencement exercises and other college functions.

Membership requirements include an audition. Band members may obtain college credit for participation in the band. Women do not take part in the marching band.

Block and Bridle Club—Local organization which limits membership to students majoring in animal husbandry or interested in livestock. This group sponsors annual horse shows and intercollegiate meat and livestock judging teams.

College Chess Club — An interest group for students interested in chess. The organization conducts tournaments among its members and inter-club matches to aid its members in improving their knowledge of the game.

Chinese Student Club—An organization of students who are interested in China which lists as its purpose the promotion of international understanding.

Dairy Club—Any student or faculty member interested in dairying may become a member. The club plans talks, a dairy club breakfast on alumni day, and presents awards to outstanding dairy students.

Delta Gamma Mu—Interest group in women's fencing. The organization

provides for fencing instruction and sponsors intercollegiate women's fencing meets.

Delta Psi Kappa—Women's physical education honorary, provides recreational events and studies the future promotion and requirements of recreational work.

Dionysians — An all student group which writes, produces, directs, and stages a musical comedy each year on campus. The musical comedy runs four nights each spring term.

D. Z. V. Brotherhood — An athletic brotherhood which aims to further the efforts of men interested in athletics through organizing teams for competition in all college athletic programs. Students who have athletic ability are eligible for membership. A unanimous vote of members is required for candidates to be admitted to the organization.

Farm Economics Club — Interest group for students and faculty interested in farm management and agricultural economics problems. The problems are investigated, discussed and acted upon by members of the club.

Forestry Club—All students enrolled in the forestry courses are eligible to join the club. Dances, a field day, and smokers are sponsored. Members take care of plantings in the Toumey arboretum.

Campus 4-H—An organization for students who are interested in social and educational leadership of rural youth.

M.S.C. Geographers Club—Membership limited to students who have been accepted as a major or graduate student and the staff of the Geography Department. Activities include field trips, lectures, discussions, and social events.

Graduate Student Organization—Any person enrolled in the school of graduate studies is eligible for membership. The group is organized to further social and cultural unity among the graduate students.

Green Splash—An interest group for women students in water activities. Green Splash is limited to qualified swimmers who have been a member of their class swimming team. The club sponsors swimming parties and a water pageant.

Horticulture Club — Local organization for students interested in horticulture.

Hotel Association—All students enrolled in or indicating a preference for hotel administration curriculum are eligible for membership. The organization operates an employment bureau and has established an alumni association.

Housing and Lumber Merchandising Club—Limited to students majoring in Housing and Lumber Merchandising. Speakers, movies, and other instructional data are obtained for general meetings of the organization.

Independent Students Association — Conducts a ride bureau and the flash card cheering section at football games. It also sponsors parties, picnics and dances.

International Relations Club — Any registered student may become a member of the organization. Members study and discuss international affairs and attempt to promote the interest in international problems among the student body.

Jazz Club — Prospective members

must declare an interest in jazz. The organization polls the student body for preference of name bands and soloists, holds jazz concerts, jam sessions, record sessions, and enables members to collect and exchange records.

Junior Farm Bureau — Attempts to develop the interests of young people in all phases of rural welfare, particularly stressing the value of cooperation, unified action and organization consciousness; to further educational advantages and promote programs which will result in new rural leadership.

Junto Club — Students must have completed the Basic English course and one term's work in literature or composition to be qualified for membership. The club promotes interest and attempts to further knowledge in the literary arts.

Landscape Architecture and Urban Planning Society—Interest group limited to students of Landscape Architecture and Urban Planning.

League of Women Voters — Campus group promotes political responsibility through informed and active partici-

pation of citizens in government. Membership is limited to those duly registered students who subscribe to policies of the organization.

Le Tricolore—Students who are interested in France and the French language, and who wish to speak French may join this organization. Group discussions and the showing of films and slides are planned to increase the interest of students in France and the French language.

Men's Glee Club—Limits membership to students who have the ability to sing on pitch and read music. This group performs at functions on and outside the campus.

Men's Physical Education Majors Club—Limited to men majoring or minoring in physical education, and in instructors associated with physical education courses.

Metallurgical Engineering Society — An interest group for all students interested in the field of metallurgy. The society meets for the purpose of extending the knowledge and interests of its members in the field.

Officers Club — All students in ad-

vanced military classes are eligible for membership. The club sponsors several social and educational events each year.

Orchesis — Modern dance interest group open to women who are able to pass a test in technique and composition of the dance. A program of dances is presented each spring.

Parachute Club—A voluntary non-profit association of former paratroopers which promotes social activities for its members.

Women's PEM Club — Limited to women majoring or minoring in physical education, the organization sponsors social affairs and publishes a newsletter of alumni doings.

Phi Alpha Theta—History honorary made up of students of high academic rating in history who are interested in encouraging the study of history.

Police Science Group—Open to all male students participating in Police Administration or Military Police. The group aims to promote a greater understanding of police science.

Porpoise Fraternity—Organization for

men who have shown a marked ability and active interest in swimming. All candidates for membership in Porpoise must have been in attendance at MSC for at least three terms.

Poultry Science Club—Interest group for any student or members of the faculty interested in poultry husbandry.

Pre-Law Club—Limited to students who are undergoing pre-law training on campus. The organization obtains information on the various law schools.

Progressive Party—Limited to undergraduates desirous of supporting actively the Progressive Party of the United States, its candidates and principles.

Psychological Society—Open to psychology majors and others who have demonstrated an interest in psychology. Members are afforded an opportunity to become more familiar with vocational opportunities in psychology and explore special fields of interest.

Public Administration Club—Open to majors in public administration. The organization promotes extra-curricular study and practical application of pub-

lic administration methods and procedures through group discussion.

Radio Guild—Provides an opportunity for experience in all activities connected with the production of radio drama. The organization presents fifteen minute weekly shows over WKAR.

Red Cedar Riding Club—Open to all students. The purposes of the club are the promotion of interest in riding and horsemanship, and sponsoring social activities which are enjoyable to those interested in the advancement of horsemanship.

Rifle and Pistol Club—Open to all students. The club promotes skillful marksmanship and social cooperation among those persons interested in rifle shooting.

Sailing Club—Open to all students interested in sailing. The organization participates in intra- and inter-collegiate sailing programs.

Scimitar—Limited to students interested in fencing. The group promotes interest and competition in fencing, provides for financial support to the

varsity fencing squad, and promotes the ideals of sportsmanship.

Sigma Chi Gamma—Interest group for women students interested in chemistry. For initiation the declaration of a chemistry major in the applied science division is necessary.

Sigma Delta Chi—Men's professional journalistic fraternity, limited to upperclassmen who intend to enter the field of journalism after graduation, and who have maintained a high academic rating in journalism courses.

MSC Skating Club — Students and faculty members who are interested in ice and roller skating may join this organization. The skating club teaches beginners and is promoting the erection of an indoor artificial ice skating rink on campus.

Ski Club—Open to all students, faculty members, and alumni interested in skiing. The organization is formed to teach and promote the art of skiing and provide an opportunity for all members to enjoy the pleasures of skiing.

Soaring Spartans—Any undergraduate may become a member of this

organization. The club instructs members in motorless flight, participates in national and regional flight contests.

Soccer Club—Open to all students. The object of the organization is to promote soccer as an intramural and varsity sport at MSC.

Spartan Bowmen—Open to all students or faculty members who are interested in archery. Intercollegiate and intramural archery matches are sponsored by the organization.

Spartan Citizen's Committee — Open to all undergraduates. The committee proposes to provide an educational program on which may be built an intelligent interest in vocational, social, political, and civic problems, and a greater ability to cope with these problems.

Spartan Guard—Open to all members of first and second year ROTC, the group is organized for drill practice and wears distinctive insignia on the military uniform.

Weight Lifting Club — Open to all students. The club is organized to promote physical and mental health through the use of weight training,

posted reading material and demonstrated exercises.

Spartan Wives—Any woman whose husband is a student at Michigan State may be a member. Social and informational meetings are held by the group.

Speech Majors Club — Open to all speech majors. The organization coordinates activities among the departments of Speech and Dramatics. A major social activity is sponsored each term.

Students For Democratic Action Chapter—Promotes interest and participation in public affairs. Any student who subscribes to the SDA statement of principles may become a member of the organization.

Town Girls—All women students who are living "off-campus" in Lansing or East Lansing with parents, relatives or friends in houses not regularly approved by the college are eligible for membership. Weekly luncheons will be held in the Union.

U. P. Club—Limited to students from Michigan's Upper Peninsula who wish to take part in varied and inexpensive social activities.

Varsity Club — Open to juniors and seniors who have won a varsity letter, performed a service for the betterment of athletics at MSC, and who have been voted in by a majority of active members.

Wildlife Conservation Club—Affords students in wildlife management the opportunity to meet members of state and federal conservation organizations. The club is open to all students.

Women's Glee Club—Membership approval by audition. The club gives concerts and participates in functions on and off the campus.

Spartan YMCA—Membership is open to any student who agrees with the organization's purposes and wishes to take an active part in activities. Four interest groups within the YMCA promote many varied activities.

Young Democrats—Open to students who have passed their eighteenth birthday, who do not belong to any other political organization, and who intend to aggressively support the nominees and platform of the Democratic Party.

Young Republicans — Open to all undergraduates who do not belong to any other political party or group. The organization promotes the growth and influence of the Republican Party.

YWCA—An organization of women students who state as their purpose the desire to realize a full and creative life through a growing knowledge of God. Many charitable and educational drives and programs are sponsored by the YWCA.

Latin American Club — An interest group limited to Latin American students and students who speak Spanish and fulfill qualifications required of members of the International Club. Members serve as tutors in Spanish, collect Latin American music, give talks to other groups, and are organizing a Latin American library.

Winged Spartans—An aviation interest group, Winged Spartans owns two ships, participates in air meets and holds air meets of its own. Instruction in aviation is available to members at a minimum cost.

Alpha Phi Omega—Limited in membership to former Scouts, this service fraternity organizes college functions,

provides a loan fund, and participates in charitable drives.

Blue Key—All-college men's honorary for upperclassmen. This organization publishes a newsletter of campus happenings and notices.

Excalibur—Senior men's leadership society composed of the thirteen seniors who are judged most active in MSC affairs. New members are tapped in fall and spring terms.

Green Helmet — Recognizes sophomore men who have an all-college average of 2.2 or better and actively participate in extra-curricular activities.

Mortar Board—Senior women's honorary admits students to membership who have maintained high grades and performed services to the college in extra-curricular work. This group sponsors educational and social functions.

Tower Guard — Sophomore women's honorary, assists at registration, sponsors social affairs, tutors freshman students, and assists in charitable programs.

Xi Sigma Pi—National forestry honorary, promotes a high standard of scholarship in forest education and a fraternal spirit among professional foresters.

Agricultural Education Club—A professional society for students and faculty in the field of agricultural education. The club promotes F. F. A. activities and sponsors meetings of active, associate, honorary and alumni members during Future Farmers' Week.

Alpha Chi Sigma—National professional chemistry fraternity limits its membership to majors in chemistry, chemical engineering or metallurgy.

Alpha Delta Theta — Professional medical technologists' sorority sponsors lectures on current happenings in the medical world.

American Institute of Electrical Engineers—National society limited to students preparing for the profession of electrical engineering.

American Institute of Chemical Engineers—All students enrolled in chemical engineering courses are eligible to join this organization. Speakers are

brought to the campus to acquaint members with professional practices.

American Society of Agronomy — Professional society for students majoring in Farm Crops and Soils and for members of the faculty of these departments. The society sponsors a speaking program and several social events during the year.

American Society of Civil Engineers —National society to which all students in civil engineering courses belong. The organization makes inspection trips to places of engineering interest.

American Society of Mechanical Engineers—Limited to students taking mechanical engineering. The organization brings nationally known speakers to the campus.

Junior American Veterinary Medical Association — Regularly enrolled students of veterinary medicine may become members of this society. The organization sponsors educational and social affairs.

Food Technology Club—Limited to candidates for a baccalaureate or advanced degree in the food technology curriculum and related fields who have an interest in food technology.

Gamma Phi — Women's veterinary medicine interest group is open to all women who have achieved sophomore standing in the school of veterinary medicine. Lectures, field trips, and social affairs are sponsored.

Home Economics Club—Interest group for students who are majoring in home economics or Basic College home economics preference students. The organization is affiliated with the Michigan Home Economics association, and the American Home Economics association.

Pi Alpha Xi—Floriculture honorary promotes high scholarship among majors in floriculture or ornamental horticulture. The year's activities include planning exhibits, and presenting the florist's conference.

Sigma Epsilon—Business administration honorary for upperclassmen. The organization provides a free income tax service to persons on campus each year, and sponsors social affairs.

Sigma Gamma Epsilon—Honorary of the earth sciences. A lecture series is scheduled by this organization.

Sigma Gamma Upsilon—Hotel honorary of the Hotel Administration de-

partment. A conference of students and the nation's leading hotel men is sponsored by this organization.

Phi Mu Alpha-Sinfonia—Professional music fraternity which attempts to advance the cause of music. Students must have finished their freshman year before they are eligible to become members of this organization.

Theta Alpha Phi — Students earn points toward a membership in this society by active participation in campus dramatics. The organization produces term plays, experimental theater work, and children's theater productions.

Theta Sigma Phi—Women's journalism honorary requires active participation on a student publication of all members, and a high scholastic average in journalism courses.

American Society of Agricultural Engineers—Limited to students enrolled in the agricultural engineering curriculum, and students showing a strong interest in agricultural engineering. The group sponsors speakers, social affairs and field trips.

RELIGIOUS GROUPS

Spartan Christian Fellowship — Is open to all interested students. This group holds Bible studies, daily prayer periods, intercollegiate conferences, and social activities. Their purpose: "To know Christ and to make Him known."

Lutheran Student Club — Sponsors Sunday evening devotional and social hours, a yearly intercollegiate conference between regional colleges, and participates in a national summer camp.

Interfaith Council—An organization made up of two members elected from each religious group active in student affairs. The Council correlates activities of the student religious organizations.

Christian Science Organization—Sponsors lectures, literature distribution, and Christian Science services. Faculty members and students who are not members of any church other than a Church of Christ, Scientist may become members of the organization.

Christian Student Foundation — An

interdenominational organization of Peoples Church which gives students an opportunity for participation in worship, religious study, and recreational events.

Canterbury Club—A service organization of Episcopal students, but open to all interested students. The club sponsors clothing drives, benefits, and social affairs.

Newman Club—Catholic student organization. Provides one religious, educational and social event each month; a marriage-doctrinal lecture series; sponsors a philosophy club, and is represented on approved student movement groups.

Gamma Delta—International association of Lutheran students, is an organization which promotes a program of Christian fellowship, religious, educational, and social, and trains for intelligent leadership in the church.

Hillel Foundation — Center of the Jewish community is open to all interested students regardless of religion. Regular religious, cultural and social programs are held.

VETERAN'S ORGANIZATIONS

American Veterans Committee — An organization for veterans of the armed services which favors the development of a world government, a strong price and rent control policy, a tax program based on the ability to pay, abolition of racial discriminatory laws, enactment of the FEPC, action to safeguard civil liberties, and a pro-democratic foreign policy.

Marine Corps Club — An interest group made up of honorably discharged former men and women of the Marine Corps and Naval personnel who were attached to Marine Corps organizations.

American Legion — For honorably discharged men and women of the armed services, students and faculty members, offers service to the veteran and his family. Projects are based on service to college veterans.

SPORTS AT STATE

Athletic director Ralph H. Young has been at Michigan State College for 26 years and is in complete charge of all men's athletic training and sports at the college.

Assisting Young is Lyman L. Frimodig, assistant director of athletics.

Overall supervision of athletic teams and events is in the hands of the Michigan State College Athletic council, a 13-man body made up of representatives from the faculty, alumni and student body. The council acts subject to the approval of President Hannah and the State Board of Agriculture.

The Sports List . . .

Michigan State competes in 12 sports on an intercollegiate basis. Included are:

Football	Fencing
Cross country	Gymnastics
Basketball	Track
Swimming	Baseball
Wrestling	Golf
Boxing	Tennis

In addition, MSC sponsors a gigantic intramural program. Each year thou-

sands of students compete for honors in:

Touch football	Swimming
Basketball	Track
Softball	Badminton
Handball	Table tennis
Golf	Wrestling
Tennis	Boxing

A sports skills program which allows Spartans to compete for points toward the all-college sports skills title includes 12 activities and lasts the entire school year.

Frank Beeman holds the post of intramural sports director.

FOOTBALL

The Spartan football coaches are:

Head Football coach — Clarence L.
(Biggie) Munn

Backfield coach—Forrest Evashevski

Line coach—Hugh (Duffy) Daugherty

Ends coach—Laverne (Kip) Taylor

Assistants—John H. Kobs, Alton S.
Kircher

Freshman coach—Robert L. Flora

Trainer—John G. (Jack) Heppinstall

1948 Team Captain—Robert (Bob) Mc-
Curry

MICHIGAN STATE COLLEGE 103

Michigan State's 53rd year of football will begin September 25 as the Spartans dedicate their enlarged 51,000 seat Macklin Field stadium in a game against the University of Michigan, 1947 Big Nine and Rose Bowl champions.

Coach Biggie Munn will have 28 men back from the 1947 list of 32 major letter winners. George Guerre of Flint, leading individual threat on the last two Spartan elevens is reported ready for action after suffering a broken leg when the Spartans lost to Kentucky last fall.

Football Facts and Figures 1947 Record

		MSC
Michigan	55	0
Mississippi State	0	7
Washington State	7	21
Iowa State	0	20
Kentucky	7	6
Marquette	7	13
Santa Clara	0	28
Temple	6	14
Hawaii	19	58

1947 Record: Won 7; Lost 2

1948 Season Schedule

- Sept. 25—University of Michigan
at East Lansing
- Oct. 2—University of Hawaii
at East Lansing
- Oct. 9—Notre Dame
at South Bend, Ind.
- Oct. 16—University of Arizona
at East Lansing (Homecoming)
- Oct. 23—Pennsylvania State College
at State College, Pa.
- Oct. 30—Oregon State College
at Corvallis, Ore.
- Nov. 6—Marquette
at Milwaukee, Wis.
- Nov. 13—Iowa State College
at Ames, Iowa
- Nov. 20—Washington State College
at East Lansing
- Nov. 27—Santa Clara
at San Francisco, Calif.

BASKETBALL

A veteran of 23 years as basketball coach at Michigan State, Ben F. Van Alstyne has earned a reputation for bringing the nation's toughest teams into the Spartan's schedule.

Returning basketball lettermen are:

Robert Geahan

Jack Wulf

Stanley Petela

William Rapchak

Donald Waldron (Capt.)

Hugh Dawson

Robert Robbins

Robert Stevens

Leon Hess

In winning 12 of their 22 games in the 1947-1948 season, the Spartans tied the MSC team season scoring record of 1,125 points. Center Bob Brannum set a new individual scoring record with a 22 game total of 344 points.

BASEBALL

Baseball coach John Kobs is a veteran member of the MSC coaching staff. This spring he will observe his 25th anniversary as head coach of Spartan diamond teams.

Assisting Kobs is Alton S. Kircher, assistant football, baseball and basketball coach.

MSC's diamond teams have won 292 games, lost 186 and tied 10 for a .598

percentage since Kobs began coaching.

MINOR SPORTS

Coach Charles McCaffree leads the Michigan State swimming team. Since coming to State in 1941 he has helped the Spartans to six successive Central Collegiate conference titles.



Wrestling mentor Fendley Collins has established MSC as the Midwest wrestling stronghold. His team last year was undefeated in dual competition and placed second in the National Collegiate championships.



George Makris brought his first Spartan boxing team home with the National Collegiate second place trophy last year. A former top collegiate boxer himself, he tutored two national champions to fame last year, Charles (Chuck) Davey and Ernie Charboneau.

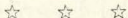


Michigan State's track teams have dominated the Midwest Independents for two years under Coach Karl Schlademan. He developed the first track team to beat Michigan. The

cindermen turned the trick in 1947, 68 $\frac{1}{3}$ to 63 $\frac{2}{3}$.



A former MSC tennis captain, Harris F. Beeman, was named last spring to coach the tennis team after the death of Coach Gordon Dahlgren. Beeman headed the team in the years 1942-43.



Coaching State's newest sport, gymnastics, is George Szypula, former NAAU tumbling champion of 1940-43. Gymnastics is a regular minor sport this year at MSC.

Traditions and Traditional Events



TRADITIONS AT STATE

Traditions are a rich part of life on the MSC campus. Developed over many years, they have come to be an integral member in the diverse educational being that is Michigan State College.

These well-loved traditions are not laws carefully written down somewhere, but are courtesies which MSC students acquire when they first come to the campus. No one will try to enforce them for they are time-honored customs which have been accepted by the student body for many years.

It is interesting that every student feels it to be his personal duty to watch over these traditions, to help them along, as his token of appreciation to those who have gone before him and those who will come later.

Traditions at MSC are, therefore, an intangible set of rules of courtesy, compiled by no one, enforced by no one, yet obeyed by all.

The more important MSC traditions follow:

1. Everyone does his part to foster the friendly, democratic spirit which sets MSC apart by speaking to every-

one he meets on campus, whether he knows them or not.

2. No one cuts across lawns and each student takes a personal interest in the beauty of the campus, which has several times been judged as one of the most beautiful in the nation.

3. No one defaces or abuses college property.

4. No one smokes on campus except in the Union building and other especially designated places. During the war years this tradition was somewhat left behind but is expected to return strongly in the near future.

5. In line with keeping the campus beautiful is the familiar slogan, "Use the sidewalks." State's broad expanses of green remain beautiful only when students keep on the sidewalks and don't wear paths across them.

6. It's a popular feeling that no woman student is really a coed until she has been kissed at midnight in the shadow of Beaumont tower. North of Beaumont is the stone bench which is reserved for engaged couples only.

TRADITIONAL EVENTS

Following are some of the more

outstanding traditional events of the college year:

Soph-Frosh Tug-Of-War

Class Day, as it was formerly called, consists of a tug-of-war across the Red Cedar River between the Sophomores and the Freshmen. Other events are the climbing of a greased pole and similar contests. The affair is under the sponsorship of the Student council.

May Morning Sing

The May Morning Sing is one of the most beautiful of MSC traditional events. An appropriate program of musical numbers is sung early in the morning before Beaumont Tower after which distinguished women students are honored by being tapped into Mortar Board, senior women's honorary and Tower Guard, sophomore women's honorary.

Senior Swingout

The first of a series of senior activities is the senior swingout, which is held late in May or early June. The graduating seniors march together in cap and gown across the campus.

Lantern Night

Only coeds participate in Lantern Night, a procession of senior and underclass women held in the spring term. Lantern Night symbolizes the transferring of duties from the upper classes to the class to follow, the lanterns carried by the seniors are passed to the juniors in a simple ceremony. About 150 outstanding senior women are presented white carnations for being outstanding leaders during their college years.

Water Carnival

The annual three-day Water Carnival is 22 years old this year. The event is built around about 45 student organization-built floats which pass before an audience of about 4,500 persons three nights on the Red Cedar river late in spring term. In past years other events have been added to make the three days nearly packed with such activities as a dance, a land float parade on Grand River avenue and a baseball game.

Another feature fo the Water Carnival is the traditional water sports contest.

Homecoming

A Saturday in fall term is set as "Homecoming" each year. Alumni gather on the campus to mingle with students and faculty and the welcome mat is spread out in front of each campus building, fraternity and sorority house. A feature of Homecoming is a special football game held in Macklin Field stadium.

Class Dances

The four classes each sponsor a special dance each year. The Senior Ball, the J-Hop, the Sophomore Prom, and the Frosh Frolic are parties especially for the particular class members but are open to all students on the campus and their guests.

MICHIGAN STATE COLLEGE SONGS

Wherever Spartans meet to enjoy or recall days at MSC, these songs are always in order. Every true Spartan should know them.

Alma Mater

Close beside the winding Cedar's
Sloping banks of green,
Spreads our campus, alma mater,
Fairest ever seen.

Swell the chorus; let it echo
Over hill and dale.
Hail to thee, our loving mother,
M. S. C. all hail.

First of all thy race, fond mother,
Thus we greet thee now,
While with loving hands the laurel
Twine we o'er thy brow.

M. S. C. Shadows

M. S. C., we love thy shadows
When twilight silence falls,
Flushing deep and softly paling
Our ivy covered halls.
Beneath the pines we'll gather
To give our hearts to thee,
Sing our love for Alma Mater
And thy praises, M. S. C.

When from the scenes we wander
And twilight shadows fade,
Our mem'ry still will linger
Where light and shadows played;
In the ev'ning oft we'll gather
And turn our thoughts to thee,
Sing our love for Alma Mater
And thy praises, M. S. C

Spartan Fight Song

On the banks of the Red Cedar
Is a college known to all;
Their specialty is winning,
And those Spartans play football.
Spartan teams are never beaten—
All through the game they fight—
Fight for the only colors
Green and White.

Chorus

Smash right through that line of blue,
Watch the points keep growing,
Spartan teams are bound to win,
They're fighting with a vim,

Rah! Rah! Rah!

See their line is weakening,
We're going to win this game,
Fight! Fight! Rah! team, Fight!
Victory for M. S. C.

M. S. C. Fight Song

You've got to fight! fight!
If you want to win,
You've got to fight! fight!
If you want to win.
Come on you Spartan
Oh, come on you Spartan
You can win for M.S.C.:
You've got to hit hard!
Let 'em know that you can
Hit 'em hard! hard!
Let 'em know that you're a
Fighting Spartan
Oh, Come on you Spartan
You can win for M. S. C.

Spartan Loyalty Song

M. S. C. is the college that all Spartans
love,
Old traditions and standards so high,
And the widespreading campus that
can't be compared,
'Neath America's spacious blue sky.
So we'll cheer for thy name, for thy
colors we'll fight,
Alma Mater we'll always love thee,
And down through the ages we'll ever
remain,
Loyal Spartans from old M. S. C.

Spartan Salute

Alma Mater, hear thou our song—
Spartans all, we join in the chorus,
Loyal sons now sing of thy fame—
We exalt thy glorious name,
Words impart to every heart our love
of thee,
Fair M. S. C.
And this chorus ever shall be
Symbol of Spartan loyalty.

M. S. C. Rouser

Fight for M. S. C. to victory
Smash your way right down that field
Keep that good old Spartan spirit
strong
Stand your ground and never yield
Loyal, true and faithful ever
Unto you we'll always be
We will give our all, we'll stand
and never fall
Win this game for M. S. C.

M. S. C. will always conquer
Ever will our team come through
Victory will be with the Spartan men
If we're loyal and we're true
Smashing down the field we'll
vanquish
Every team that comes our way

We will give our all, we'll stand
and never fall
M. S. C. will win today.

SPARTAN CHEERS

Fight Locomotive

Michigan State — Michigan State
Fight — Fight — Fight — Fight
Michigan State — Michigan State
Fight — Fight — Fight — Fight
Michigan State — Michigan State
Fight

Spartan Hoo-Rah

S-p-a-r-t-a-n
S-p-a-r-t-a-n
S-p-a-r-t-a-n
Hoo Rah — Hoo Rah — Hoo Rah
Team Team Team

State Fight

S Fight
T Fight
A Fight
T Fight
E Fight

Fight

Yea State, Yea State, Yea State
Fight Fight Fight

SECTIONAL YELLS

Green and White

Green and White Fight Fight
Green and White Fight Fight
Who Fight
We Fight
Green and White Fight Fight

Huddle

16 — 32 — 64 — Hike

1 — 2 — 3 — 4

Fight Team Fight

We Want a Touchdown
(Repeats)

Block That Kick
(Repeats)

Hold That Line
(Repeats)

Note: For information about college fees, registration, eligibility rules, requirements to the various schools, examinations and courses, consult the college catalog. A housing booklet may be secured at the registrar's office. A booklet with information concerning students loans is available at the counselor for men's office.

INDEX

	Page
A Cappella Choir	58
Activities	49
Adapted Sports	38
Administrative Officers	4
Agricultural Education Club	94
Agricultural Extension Club	78
Alethians	78
Alpha Chi Sigma	94
Alpha Delta Theta	94
Alpha Epsilon Rho	75
Alpha Phi Omega	92
Alpha Psi	75
Alpha Zeta	75
Alumni Relations	42
Amateur Radio Club	78
American Institute of Chemical Engineers	94
American Institute of Electrical Engineers	94

MICHIGAN STATE COLLEGE 121

	Page
American Legion	100
American Society of Agricultural Engineers	97
American Society of Agronomy	20
American Society of Civil Engineers	95
American Society of Mechanical Engineers	95
American Veterans Committee	100
American Veterinary Medical Association	95
Associated Women Students	25, 66
Band	58, 78
Baseball	105
Basketball	104
Beaumont Tower	110
Beta Alpha Sigma	76
Big Sister Council	68
Block and Bridle	79
Blue Key	93
Board of Publications	72
Book Store	31
Boxing	106
Calendar	49
Campus 4-H	81
Canterbury Club	99
Cheers	118
Chinese Student Club	79
Christian Science Organization	98
Christian Student Foundation	98

	Page
Churches	47
Class Dances	113
Coaches	102
Concerts	56, 58
Constitution of Student Council	61
Cooperative Houses for Men	43
Cooperative Houses for Women	44
Cooperative League	46
Counseling Center	28
Counselor for Men	19
Counselor for Women	19
Dairy Club	79
Dean of Students	19
Delta Gamma Mu	79
Delta Phi Delta	76
Delta Psi Kappa	80
Department Locations	15
Dionysians	80
Dormitories	43
Dramatics	71
D. Z. V. Brotherhood	10
Engineering Magazine	74
Excalibur	93
Farm Economics Club	80
Food Technology Club	95
Football	102
Forestry Club	81
Fraternities	44

MICHIGAN STATE COLLEGE 123

	Page
Frosh Frolic	113
Gamma Phi	96
Geographers' Club	81
Graduate Student Organization	81
Green Helmet	93
Green Splash	81
Gymnastics	107
Health Service	26
Hillel Foundation	99
History	9
Homecoming	113
Home Economics Club	96
Homesteader	74
Horticulture	82
Hotel Association	82
Housing and Lumber Merchandising Club	82
Housing Director	18
Independent Students' Association ..	82
Intramural Men's Sports	101
Intramural Program for Women	69
Interfaith Council	98
Interfraternity Council	67
International Center	56
International Relations Club	82
Jazz Club	82
Junior American Veterinary Medical Association	95

	Page
Junior Farm Bureau	83
Junto Club	83
Kappa Alpha Mu	76
Kappa Alpha Sigma	76
Kappa Delta Pi	76
Landscape Architecture and Urban Planning Society	83
Lantern Night	112
Latin American Club	92
League of Women Voters	83
Lecture-Concert Series	56
Le Tricolore	84
Library	30
Lutheran Student Club	98
Marine Corps Club	100
Married Housing	46
May Morning Sing	111
Men's Athletics	101
Men's Cooperative Houses	44
Men's Council	67
Men's Dormitories	43
Men's Glee Club	84
Men's Physical Education Major's Club	84
Metallurgical Engineering Society ...	84
Michigan State News	73
Military Department	40
Minor Sports	105
Mortar Board	93

MICHIGAN STATE COLLEGE 125

	Page
MSC Band	78
Newman Club	99
Officer's Club	84
Officer's Reserve Corps	41
Omicron Nu	76
Orchesis	85
PanHellenic Council	68
Parachute Club	85
P E M Club	85
Personnel Division	18
Phi Alpha Theta	85
Phi Kappa Phi	77
Phi Mu Alpha-Sinfonia	97
Physical Education for Men	37
Physical Education for Women	39
Pi Alpha Xi	96
Pi Kappa Delta	77
Pi Mu Epsilon	77
Placement Service	28
Police Science Group	85
Porpoise Fraternity	85
Poultry Science Club	86
Pre-Law Club	86
Progressive Party	86
Psychological Society	86
Public Administration Club	86
Publications	73
Radio Guild	87
Red Cedar Riding Club	87

	Page
Rifle and Pistol Club	87
R O T C	40
Sailing Club	87
Scimitar	87
Scabbard and Blade	77
Senior Swingout	111
Sigma Chi Gamma	88
Sigma Delta Chi	88
Sigma Delta Pi	77
Sigma Epsilon	96
Sigma Gamma Epsilon	96
Sigma Gamma Upsilon	96
Skating Club	88
Ski Club	88
Soaring Spartans	88
Soccer Club	89
Social Rules	31
Songs	114
Soph-Frosh Tug-of-War	111
Soph Prom	113
Sororities	19
Spartan Bowmen	89
Spartan Citizen's Committee	89
Spartan Engineer	74
Spartan Guard	89
Spartan Magazine	74
Spartan Wives	90
Speech Clinic	30
Speech Major's Club	90
Sports	101
State News	73

MICHIGAN STATE COLLEGE 127

	Page
Student Council	60
Student Council Constitution	61
Student-Faculty Social Committee ..	31
Students for Democratic Action	90
Studio Theater	72
Swimming	105
Tau Beta Pi	78
Tau Sigma	78
Tennis	107
Theta Alpha Phi	97
Theta Sigma Phi	97
Tower Guard	93
Town Girls	90
Track	106
Traditional Events	110
Traditions	109
Traffic Rules	33
Trailers	46
Union Board	26
Union Memorial Building	25
U. P. Club	90
Varsity Club	91
Veterinarian	74
Water Carnival	112
Weight Lifting Club	89
Wildlife Conservation Club	91
Winged Spartans	92
Wolverine	73

	Page
Women's Athletic Association	69
Women's Cooperative Houses	44
Women's Cooperative League	46
Women's Dormitories	43
Wrestling	106
Xi Sigma Pi	94
Y M C A	91
Young Democrats	91
Young Republicans	92
Y W C A	92

Acc # 345



