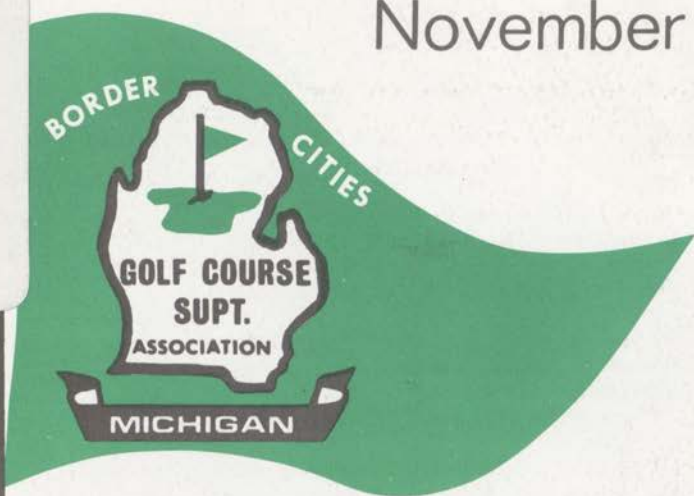


GV
975
A1
P3
1979

November 1979



55 OCT 1979
MICHIGAN STATE UNIVERSITY LIBRARIES

A PATCH of GREEN

Official Publication of the
Michigan & Border Cities Golf Course Superintendents Association



TURFGRASS, INC.

365 WOODLAND DRIVE
SOUTH LYON, MICHIGAN 48178
Phone: Area 313 437-1427

*Autumn is here, and so is inflation,
Eating your dollars with great jubilation.
Perhaps we can help you to be "penny-wise"
And save you some money as prices do rise.*

*By ordering early our COUNTRY CLUB line,
The prices are less and the product is fine.
Additional funds are saved by the thrifty,
By your timing of payment, which is really quite "nifty".*

*As those of you know who bought MALLINCKRODT,
The dollars you saved for the product you got.
If your timing was right and your action was wise,
You ordered the product 'fore prices could rise.*

*For our fine UPJOHN products, there are savings as well,
It's a quality product (that's all that we sell).
By ordering early there's more for the money,
And as dollars are squeaking, you know that's not funny.*

*Those are a few of the products we sell,
And the following items we handle as well.
Quality merchandise comes from FORE PAR,
And their personalization is superior by far.*

*Most of you know the good LEWIS line,
For golfing supplies their product is fine.
YANKEE makes squeegees and levelers and rakes,
No other can beat them for quality sake.*

*The marker by RICHWAY will assist you in mapping,
And a savings in dollars by not overlapping.
And if you have spots where there's travel and tearing,
The GRASS CELLS by TURFGRASS will keep them from wearing.*

*ELANCO for sampling areas small,
And DUPONT and CLEARY, we handle them all.
VELSICOL, AQUATROLS, FOX VALLEY too,
CYCLONE and PRATT to name just a few.*

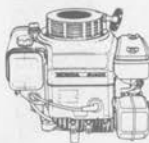
*ROUNDUP control for particular places,
For specialized areas a "good super" faces.
So let us assist you however we may.
We try to give SERVICE and not much delay.*

*RHODIA TWENTY-SIX, ZERO, ONE, NINE.
And MICROGREEN liquid will do a job fine.
As you're planning through winter and thinking of spring,
Let us assist you, just give us a ring.*

SUPERINTENDENTS - CHOOSE HONDA FOR 1980

HONDA ENGINES

Recondition your equipment this winter with a Honda.
Built tough for Dependability - Durability - Quiet
Precision Engineering - Economy



ENGINE SPECIFICATIONS

Horserpower	Model	Type	Variation	Horizontal Shaft	Vertical Shaft	Crankshaft P.T.O.	6 TO 1 Reduction	2 TO 1 Reduction	Mech. Governor	Top Gov. Speed No Load	Recoil Starter	Starter 12v	Point Type Ignition	C.D.I.	Air Cleaner*	Fuel Tank (Qt.)	Weight
3.5	GV150	A1			X	3 5/32 x 7/8 DIA, TAPPED 3/8 24 UNF				3600	X	X		SD	2.12	28.7	
	GV150	A2			X	2 7/16 x 7/8 DIA, TAPPED 3/8 24 UNF				3600	X	X		SD	2.12	28.7	
	G150	Q	AF	X		2 7/16 x 3/4 DIA, TAPPED 5/16 24 UNF			X	4000	X		X	OB	2.64	29.8	
	G150	PE	AF	X		2 7/16 x 5/8 THREADED			X	4000	X		X	OB	2.64	29.8	
	G150	HQ	AF	X		2 3/4 x 3/4 DIA.	X	X	X	4000	X	X	X	OB	2.64	37.1	
5	GV200	(1)	N40		X	3 5/32 x 1 DIA, TAPPED 3/8 24 UNF			X	3200	X			X	DE	2.01	37.5
	GV200	(2)	N50		X	1 13/16 x 1 DIA, TAPPED 7/16 20 UNF			X	3200	X			X	DE	2.01	37.5
	GV200	(3)	N4C		X	3 5/32 x 1 DIA, TAPPED 3/8 24 UNF			X	3700	X	X		DE	OPT.	35.3	
	G200	Q	AF	X		2 7/16 x 3/4 DIA, TAPPED 5/16 24 UNF			X	4000	X		X	OB	3.68	33.1	
	G200	V	A5	X		2 53/64 x 0.755 DIA, TAPER 2 1/4 PER FT.			X	4000	X		X	OB	3.68	33.1	
	G200	PE	AF	X		2 7/16 x 5/8 THREADED			X	4000	X		X	OB	3.68	33.1	
	G200	S	AG	X		2 3/64 x 22 mm DIA.	X	X	X	4000	X		X	OB	3.68	46.5	
	G200	HQ	AF	X		2 3/64 x 3/4 DIA.	X	X	X	4000	X	X	X	OB	3.68	41.5	
7	G300	Q	B6	X		3 31/64 x 1 DIA, TAPPED 7/16 20 UNF			X	4000	X			X	DE	6.36	48.5
	G300	V	B6	X		4 11/64 x 7/8 DIA, TAPER 2 1/4 PER FT.			X	4000	X			X	DE	6.36	48.5
	G300	S	B7	X		2 3/32 x 22 mm DIA.	X	X	X	4000	X			X	DE	6.36	63.5
	G300	HQ	B6	X		3 7/32 x 1 DIA, TAPPED 7/16 20 UNF	X		X	4000	X			X	DE	6.36	59.0
	G300	Q	J0	X		3 31/64 x 1 DIA, TAPPED 7/16 20 UNF			X	4000	OPT.	X	X	DE	6.36	59.0	
10	G400	Q	B6	X		3 31/64 x 1 DIA, TAPPED 7/16 20 UNF			X	4000	X			X	DE	6.36	66.1
	G400	V	B6	X		4 11/64 x 7/8 DIA, TAPER 2 1/4 PER FT.			X	4000	X			X	DE	6.36	66.1
	G400	Q	J0	X		3 31/64 x 1 DIA, TAPPED 7/16 20 UNF			X	4000	OPT.	X	X	DE	6.36	76.0	
11	GV400	(4)	AA		X	3 5/32 x 1.0 DIA, TAPPED 7/16 20 UNF			X	3550	X		X	DE	2.44	61.7	
	GV400	(5)	AB		X	3 5/32 x 1.0 DIA, TAPPED 7/16 20 UNF			X	3550	X		X	DE	OPT.	61.7	
	GV400	(6)	JB		X	3 5/32 x 1.0 DIA, TAPPED 7/16 20 UNF			X	3550	X	X	X	DE	OPT.	68.4	
	GV400	(7)	JD		X	3 5/32 x 1.0 DIA, TAPPED 7/16 20 UNF			X	3550	OPT.	X	X	DE	OPT.	66.2	

TYPE: (1) N40 with CDI & Extended Oil Filler Tube
(2) N50 with CDI & Extended Oil Filler Tube
(3) N4C (without tank, oil filler tube, with S-type muffler)
(4) AA - STD. type

(5) AB - STD. type (with SN muffler, w/o fuel tank)
(6) JB - Electric Start (with SN muffler and recoil starter, w/o fuel tank)
(7) JD - Electric Start (with 80w lamp coil, w/o fuel tank and muffler)

* SD - SEMI-DRY
OB - OIL BATH
DE - DUAL ELEMENT



CUSHMAN
TUFF-CARE
EQUIPMENT

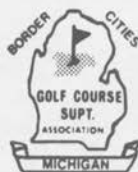
GOLF CAR DISTRIBUTORS

1980 W. WIDE TRACK DR. (US 10) PONTIAC, MICH.
338-0425 MON.-FRI. 8-5, SAT. 8-1



Easy Terms
To Fit Your Budget

SPECIAL PRICES TO M.B.C.G.C.S.A. MEMBERS



**MICHIGAN & BORDER
CITIES GOLF COURSE
SUPERINTENDENTS
ASSOCIATION**

PRESIDENT

CLEM WOLFROM
DETROIT GOLF CLUB
530 Kendry
Bloomfield Hills, Michigan 48018
Off. 345-4589, Res. 384-0140

VICE PRESIDENT

JAMES TIMMERMAN, CGCS
ORCHARD LAKE COUNTRY CLUB
7183 Buckthorn
Orchard Lake, Michigan 48038
Off. 682-2150, Res. 682-7234

SECRETARY-TREASURER

BRUCE WOLFROM, CGCS
BARTON HILLS COUNTRY CLUB
639 Barber Street
Ann Arbor, Michigan 48103
Off. 662-8859, Res. 663-9213

BOARD OF DIRECTORS

JAY DELCAMP
GOWANIE GOLF CLUB
19957 Great Oaks Circle South
Mt. Clemens, Michigan 48043
Off. 468-1432, Res. 791-8481

ED HEINEMAN
WATERS EDGE COUNTRY CLUB
10531 Bellevue
Grosse Ile, Michigan 48138
Off. 675-0927, Res. 676-3095

CHARLES GAIGE
LAKELANDS GOLF & COUNTRY CLUB
7390 Rickett
Brighton, Michigan
Off. 231-3003, Res. 227-4617

WALTER TROMBLY, CGCS
ARROWHEAD GOLF CLUB
3130 Orion Road
Lake Orion, Michigan 48035
Off. 373-5240, Res. 693-2924

MICHAEL EDGERTON
MEADOWBROOK COUNTRY CLUB
3066 Sesame
Howell, Michigan 48843
Off. 349-3608, Res. 517-546-5927

FRITZ MC MULLEN, CGCS
FOREST LAKE COUNTRY CLUB
3912 Fieldview
Orchard Lake, Michigan 48038
Off. 335-1410, Res. 363-8030

PRESIDENT EMERITUS

GEORGE W. PRIESKORN
BURROUGHS FARM GOLF CLUB
5341 Brighton Road
Brighton, Michigan 48116
Off. 227-1381, Res. 229-9437

"A PATCH OF GREEN"

Published monthly by the
**MICHIGAN AND BORDER CITIES GOLF
COURSE SUPERINTENDENTS ASSOCIATION**

Circulation: 1,250

Ted Woehrl, CGCS, Oakland Hills C.C.
James Timmerman, Orchard Lakes C.C.
CO-EDITORS

Printed At

BLAKEMAN PRINTING COMPANY
31823 Utica Road
Fraser, Michigan 48026
Phone: (313) 293-3540

MONTHLY ADVERTISING RATES

Double Page Spread.....	\$150.00
Back Outside Page.....	75.00
Full Page.....	65.00
Half Page.....	40.00
Quarter Page.....	30.00
Eighth Page.....	15.00
Sixteenth Page.....	10.00
Classified Ad (per column inch).....	7.50

DISCOUNT RATE: One Year 10%

Note: Advertising fees may not be deducted
from the above rates.

*This Month's
Advertisers...*

Crown Lubricant & Specialties Ltd.
FDS Fertilizers, Inc.
Golf Car Distributors
Jessens Inc.
Lakeshore Equipment Corporation
Lawn Equipment Corporation
Lebanon/Agrico
W. F. Miller Garden & Equipment
Oxford Peat Company
O. M. Scott & Son, Inc.
Wm. F. Sell & Son, Inc.
Sprinkler Irrigation Supply
Terminal Sales Corporation
Tire Wholesalers, Inc.
Turfgrass, Inc.
Turf Supplies, Inc.
USS Agri-Chemicals
Wilkie Turf Equipment Company



Left to right: Jim Standish, Executive Director of the Golf Association of Michigan; Jim Timmerman, Director of MTF; Clarence Wolfrom, an early member of MTF; Jim Smith, past President of MTF; Clem Wolfrom, President of Michigan & Border Cities Golf Course Superintendents Association; Gordy LaFontaine, past President MTF; and "Tuck" Tate, President of MTF.

A dream comes true

On October 11, 1979, a dream which started 14 years ago came true. The groundbreaking ceremonies for the Robert W. Hancock Turfgrass Field Lab took place at MSU.

The location of the Lab will be on the Southeast corner of Mt. Hope and Farm Lane on the MSU Campus, East Lansing, Michigan.

You may ask, "Who is Robert W. Hancock?"

The late Robert W. Hancock was a past President and Greens Committee Chairman of the Country Club of Jackson. He became interested in the many difficulties growing turfgrasses in the State of Michigan. Because of his desire to assure that Michigan would always have most attractive golf courses, he was encouraged by the Michigan Turfgrass Field Laboratory.

These generous contributions, coupled with the proceeds from all previous "golf days" including this

year's \$12,000.00 will be used to equip the Laboratory. We can all be proud of the results. Many people have devoted countless hours and a lot of hard work to make this dream come true.

Congratulations to all and a special "Thanks" to the early dreamers.



Some of the hearty guests at the groundbreaking ceremonies — braving the cold, wet weather.



MICHIGAN & BORDER CITIES GOLF COURSE SUPERINTENDENTS ASSOCIATION Board of Directors. Left to right: Back row – Mike Edgerton, Charlie Gaige, Ed Heineman, Kevin Dushane, Frtiz McMullen, Chris Myers, and Walter Trombley. Front row – Bruce Wolfrom (Sec.-Treas.), Past President Clem Wolfrom, newly elected President Jim Timmerman, and newly elected Vice President Bob Hope.



Clarence Wolfrom, right, presents Gene Johanningsmeier with trophy for winning the 1st Annual "Clarence Wolfrom Classic" tournament.



Above: Host Don LaFond, left, and Bay Pointe Golf Club owner, Ernie Fuller.

Below left: MBCGCSA President, Clem Wolfrom, thanking the crowd for their support.

Below right: Fritz McMullen, Golf Chairman, and Dr. Joe Vargas of MSU.



Helping the superintendent through turf research...

- Controlled Release Fertilizers
- Fertilizer/Pesticide Combinations

- Fungicides—Herbicides—Insecticides
- Soil Testing—Weed & Disease Identification

SCOTTS • LELY • GANDY SPREADERS

Finest quality turfgrass seed—Fairways • Greens • Tees • Roughs
Scotts Windsor and Victa blends

Jim Brocklehurst

Technical Representative
1964 Catalpa
Berkley, Michigan 48072
Telephone: 313-547-9632



Softball game benefits turf research

A softball game benefitting Michigan Turf Grass Research was played by teams from the Michigan and Border Cities Golf Course Superintendents Association and Century Rain-Aid Irrigation Specialists. Century Rain-Aid offered to donate \$100 to Turfgrass Research if the Superintendents would field a team. An equal amount was to be donated to the cause if the Superintendents won. Although it hurt the pocketbook, Century Rain-Aid presented \$200 to Turf Grass Research as the Superintendents won the game, 5-2.

The game was played Friday, September 28. All seven innings were completed in just one hour. Jerry Gill, the Superintendent's co-manager, said it was a "good defensive ball game on both team's part."

The only outstanding offensive play of the game came when Superintendent Kevin Dushane hit a home run.

The real surprise of the game came from the superb defensive play of Superintendent Jerry Gill, who looked like a combination of Brooks Robinson and George Kell, yet older than both. Gill states that the team "would like a rematch - another challenge" from Century. "Every member really enjoyed the game. Our thanks to Century for a

fine gesture on their part."

Century Rain-Aid is preparing now for next year's game. They report that it will be their turn to pick the field because this year's field conditions were "similar to the Majove Desert in the dry season."

Both teams commend the fine umpiring of Dick Roberts. Century would like to extend a special thanks to Ted Woerhle, Clem Wolfrom, and Bruce Wolfrom for helping to get this project in the air and flying, (even if the softball wasn't).

50TH ANNUAL
MICHIGAN TURFGRASS CONFERENCE
January 15 & 16, 1980
Kellogg Center
Michigan State University
East Lansing, Michigan

Superintendent position open

The Interlachen Country Club, located in the suburb Edina of Minneapolis is accepting applications for the position of Grounds Superintendent.

Send resume to: Interlachen Country Club, 6200 Interlachen Blvd., Edina, Minn. 55436, Att'n: Donald W. Abel.



TEAM ROSTERS

MICHIGAN AND BORDER CITIES GOLF COURSE SUPERINTENDENTS ASSOCIATION

Lee Bidwell - Farmington C.C.
 Kevin Dushane - Wabeek C.C.
 Mike Edgerton - Meadowbrook C.C.
 *Jerry Gill - Tam O'Shanter C.C.
 *Roger Gill - Pine Lake C.C.
 Glen Korhorn - Salt River Golf Club
 Fritz McMullen - Forest Lake C.C.
 Don Ratcliff - Glengarry C.C.
 Jim Timmerman - Orchard Lake C.C.
 Marty Miller - Knollwood C.C.

CENTURY RAIN-AID

*Dick Carpenter
 Richard Comyn
 Scott Foerstner
 Mike Gris
 Mark Gunderson
 Ernie Hodas
 Ken Hodas
 Paul Kendrick
 Vern Mace
 Scott MacIntyre
 Bcb Neumaier
 Mark Roberts
 Ben Taliaferro

*Managers

***No synthetically produced fertilizer can compare with
MILORGANITE***

Golf Courses Use More

MILORGANITE

Than Any Other Fertilizer



TERMINAL SALES CORP.

12871 EATON AVE.
 DETROIT, MICH. 48227
 (313) 491-0606

Can you afford not to?

by Stanley J. Zontek
Director USGA, Northeastern Region

One of the most valuable and unique services the USGA offers to its Member Clubs is the Turf Advisory Service. How else can you receive a one-half day visit by an experienced golf turf-oriented agronomist candidly discussing your course in detail, followed by a comprehensive written report. . . all for \$200 per visit?

For many clubs this is an exceptional opportunity for club officials and the superintendent to meet, better understand, and develop the programs for the maintenance of their golf courses. Some golf courses routinely receive one Turf Advisory Service visit annually as a kind of "physical examination." Others prefer two or more visits per year to monitor more closely the conditions on the course through the golf season. In either case, these thoughtful clubs and their superintendents use and appreciate the services offered by the USGA to its Member Clubs and the expertise of the Green Section staff. For such a small investment they are supporting the activities of the organization that governs the game of golf. They also are reinforcing their own thinking on the management of their golf facility.

Isn't this a worthwhile endeavor for all those people concerned and involved with the care of their golf courses? We certainly believe it is.

To those clubs already utilizing the services of the USGA Green Section, we thank you and hope that this support continues.

To those other golf courses not taking advantage of this service, we invite you to participate actively in the USGA and its turf extension arm, the Green Section.

There are six well-staffed regional offices conveniently located across the country. A golf course superintendent or club official just needs to contact one of these offices and schedule a Turf Advisory Service visit. Golf courses certainly have something to gain by utilizing this service at a most economical price.

North Central Region:

P. O. Box 592

Crystal Lake, Ill. 60014

(815) 459-3731

Carl H. Schwartzkopf, Director

USGA Green Section Record

The *USGA Green Section Record*, devoted to golf course management, is published six times per year in January, March, May, July, September, and November. Subscriptions are \$3 per year. Subscription requests should be sent to the USGA, Golf House, Far Hills, N.J. 07931.

"PREMIUM PRODUCTS - Economically Priced"

We Distribute:

**Fertilizers
Chemicals
Lime & Gypsum
Trees & Shrubs**

**Seeds
Accessories
Paving Blocks
Equipment**



F D S FERTILIZERS, INC.

5324 W. BLOOMFIELD LAKE • W. BLOOMFIELD, MI. 48033

PHONE: (313) 851-7766

TORO**GROUNDSMASTER 72®**

worth more



**Durability, versatility and
top performance features make the
Groundsmaster 72® worth more.**

The optional Two-stage 48-inch Snowthrower with driftbreaker auger clears snow from sidewalks in a hurry. Oversized Second Stage prevents clogging, Electric Chute Rotator puts snow where you want it.

**WILKIE****Turf Equipment Division, Inc.****TORO**

P.O. Box 749 • 1050 Opydyke Road • Pontiac • Michigan • 48056 • 313/373-8800

FAIRWAY • ROUGH • GREENS

MOWER

Sharpening & Repairing

PICKUP & DELIVERY

JESSEN'S INC.
OUTDOOR POWER EQUIPMENT

3365 Highland Rd. (M-59)—Highland
Milford, Michigan 48042

CALL COLLECT FOR FREE ESTIMATE
(313) 887-1500

**ARE YOU INTERESTED IN JOINING THE
MICHIGAN AND BORDER CITIES
GOLF COURSE SUPERINTENDENTS
ASSOCIATION?**

FILL IN THE QUESTIONNAIRE BELOW AND MAIL TO:



BRUCE WOLFROM
BARTON HILLS COUNTRY CLUB
639 Barber Street
Ann Arbor, Michigan 48103
Office 662-8359, Residence 663-9213



DATE _____

NAME _____

ADDRESS _____

CITY _____ STATE _____ ZIP _____

OR YOU MAY CONTACT THE NEXT GOLF COURSE SUPPLIER WHO CALL ON
YOU AND GIVE HIM THE INFORMATION NEEDED FOR APPLICATION.

51st INTERNATIONAL Turfgrass Conference And Show



**FEBRUARY 17-22, 1980
ST. LOUIS, MISSOURI**

Bob Pontius celebrates 25 years as Superintendent

Robert Pontius' first introduction to golf course maintenance began in April, 1943. He was employed at Congress Lake Country Club, Hartsville, Ohio. September, 1954 began Bob's first Golf Course Superintendent job at Squaw Creek C.C., Vienna, Ohio. From there, in 1961, he moved on to Lyndhurst, Ohio with Acaria C.C. After being with Acaria C.C. for 11 years, he moved on to Franklin Hills C.C. in Franklin, Michigan. He has been employed there since 1972.

Bob read of the certification program and became interested in April, 1972. He was the 57th person in the United States to be certified. He became the 18th person in the United States to be recertified in 1977. During his years as a golf course Superintendent, five men working with him

have become Golf Course Superintendents.

Bob is married, has four children, one grandson. He loves the outdoors, hunting, fishing, snowmobiling, and golf, a left hander, with a 7 handicap. 1972 - Class A Championship of the Cleveland, Ohio Left Handers Tournament was won by Bob.

PENNSYLVANIA TURFGRASS CONFERENCE

February 26-29, 1979

Hershey Motor Lodge & Convention Ctr.
Hershey, PA 17033

Contact: Arthur D. Wick, P.O. Box 362,
Sewickley, Pa. 15143, or Christine E. King,
Secretary-Treasurer, Pennsylvania Turfgrass
Council, 412 Blanchard Street,
Bellefonte, Pa. 16823.



Vertagreen

A product for all reasons



- Balan offers pre-emergence control of Poa Annuua, crabgrass, goose grass, water grass and foxtail.
- One-fourth the nitrogen is Urea-Formaldehyde.
- Uniform particles flow smoothly, spread evenly.
- Contains secondary and micro-nutrients.



Agri-Chemicals

Division of United States Steel

P.O. Box 1685
Atlanta, Georgia 30301

From FOREFRONT

Why you need an Employee Handbook

A new job can be one of life's traumatic experiences. There is an endless stream of information to be assimilated, names to be memorized and duties and procedures to be learned. Supervisors and new employees are often strangers, so there is little opportunity for either to read additional meanings into the other's conversation. In any case, information transmitted verbally is often misinterpreted or forgotten, making the transition period that much more difficult for both parties.

An employee handbook or personnel manual can be an easy source of information about the day-to-day operation of a company, its policies and the responsibilities of both employees and supervisors. It can give the new employee a friendly welcome and serve as a continuing source of information about the company.

Handbooks were once considered a frill that only large companies could afford. Today many small companies use them to give employees the information they need to know to do their jobs.

The handbook should begin with a brief welcome message to the new employee. It might also emphasize the importance of the employee's job to the company.

You also may want to include sections on the history of the company or organization and its products, services or sales. This information will help the new employee feel that he belongs in the organization.

To fit in with other employees, a new person needs information on working hours, lunch and other breaks, time clock regulations, reporting of absences, supervisors, wages and

Continued on next page

paydays. Since salaries change frequently, it might be a good idea to make a general statement on the subject in the handbook itself and keep the information current by inserting a supplementary mimeographed sheet.

Information on health insurance, vacations, wage reviews and promotions, savings and pension plans, service awards and employee profit-sharing plans also should be included.

Above all, keep the information current. If certain aspects of your operation change rapidly, it might be less expensive to keep the information in the handbook general to avoid having to rewrite and reprint it.

TEN COMMANDMENTS FOR LIVING WITH PEOPLE

1. *Speak to people.* Nothing is so nice as a cheerful greeting.
2. *Smile at people.* Takes 72 muscles to frown, 14 to smile.
3. *Call people by name.* Sweetest sound is one's own name.
4. *Be friendly and helpful.* If you want friends, be a friend.
5. *Be cordial.* Speak and act to prove everything you do is a genuine pleasure.
6. *Be genuinely interested in people.* Just try and you can like almost everyone.
7. *Be generous with praise - and courteous with criticism.*
8. *Be considerate with others.* There are often three sides to a controversy; yours, his and the right side.
9. *Be alert to give help.* . . . what we do for others lives and is immortal.
10. *Add to all this a good sense of humor,* loads of patience, a dash of humility and you will be rewarded many fold.

John S. Swift Company, Inc.

To accuse others for your own misfortune is a sign of lack of education; to accuse yourself shows that your education has begun; to accuse neither others nor yourself shows that your education is complete.

Epictetus



Tire Wholesalers Company, Inc.

19240 West Eight Mile Southfield, Mich. 48075
(1/2 Mile West of Southfield Road)

Phone: (313) 354-5644



**TRUCK-CAR
TRAILER
MOTORCYCLE
INDUSTRIAL
TIRES**





WHOLESALE PRICES TO COMMERCIAL ACCOUNTS

BLOW!

AS LOW AS

\$665



You can forget about being stuck in the snow when you have a reliable Kubota snowblower and Kubota diesel tractor clearing the way for you.

A FULL LINE OF
MID-RANGE DIESEL
TRACTORS AND IMPLEMENTS

KUBOTA®

Test drive a Kubota Diesel Tractor now at:

WM. F. SELL & SON, INC.

16555 TELEGRAPH ROAD
TAYLOR, MICHIGAN 48180
Telephone: 313/282-5100

LAKESHORE

EQUIPMENT & SUPPLY CO.
HOME OF

LESCO® PRODUCTS

And

SULFUR COATED FERTILIZERS

Distributor & Formulator

GRASS SEED, FERTILIZERS
INSECTICIDES FUNGICIDES, HERBICIDES

Call Us Today
TOLL FREE
1-800-321-5951

300 S. Abbe Rd. Elyria, Ohio 44035 (216) 323-7544
Price Quotation On Request

"For Land's Sake-Use Peat"



OXFORD PEAT CO.

1430 E. Drahnner Rd.
Oxford, Michigan 48051

PROCESSED PEAT
Bulk or Bag
Custom Blending

FRED LATTA

313/628-5991

TURF SUPPLIES INC.

6900 Pardee Rd., Taylor, Michigan
(313) 291-1200

DON'T EVEN THINK
OF BUYING

GRASS SEED
FERTILIZERS
FUNGICIDES

WITHOUT CALLING

291-1200

TURF SUPPLIES INC.

6900 Pardee Rd., Taylor, Michigan
(313) 291-1200

Russell H. Tiller named to TUCO sales force

KALAMAZOO, Michigan - Russel H. Tiller has been promoted to agricultural chemical sales representative for TUCO, Division of The Upjohn Company. The announcement was made by Owen B. Lewis, Agricultural Chemical Marketing Manager.

In his new position, Tiller will be responsible for TUCO agricultural chemical sales in the states of Michigan and Indiana, and will report to Donald J. Maske, North Central District Manager.

Formerly a biology/biochemical assistant with Upjohn's Agricultural Division, Tiller holds a B.S. Degree in Agribusiness from Western Michigan University. The Otsego, Michigan native, his wife Sara, and their two sons reside in Richland, Michigan.

Preventative maintenance

Preventive maintenance will not solve all production problems but a properly designed program will prevent most unexpected breakdowns and save a lot of unnecessary expense.

Maintenance takes place whether it is planned or not. It can take the form of expensive repairs or unnecessary replacement of parts; or maintaining machines and equipment in good operating condition. There is a choice - roll the dice or bet on a sure thing.

CROWN LUBRICANT & SPECIALTIES LTD.

Lubricants  Designed
to make the Superintendent's job easier.

WE ARE GEARED TO SERVE YOU BETTER

CHAS. W. KING
313/525-3902

BOX 2065
LIVONIA, MICH. 48151

CHAS. W. KING, JR.
313/398-5964

How to repair a ball mark

The ball landed with a thud. The green was soft, and as the ball bounced forward it left a deep little crater in the turf, exposing brown earth at the back and grass blades pushed together at the front.

Ignoring the little crater, the golfer walked up to his ball, cleaned it, holed his putt and glowed with self-satisfaction.

Some hours later, after the exposed earth in the ball mark had dried out, another golfer found the damaged area in his line of putt. He attempted repairs, but the result was not very satisfactory. An unflattened bit of turf twisted his putt off line.

Next morning an inexperienced greenkeeper mowed the putting surface without repairing ball marks. The result was a putting surface pocked-marked, untrue and covered with bare spots where the mower scalped the grass from the turf.

What Happens

What actually happens when a ball mark is not promptly and properly repaired?

1. Soil is exposed, and so the area immediately surrounding the ball dries up faster than it would if the ball marks were repaired; and thus a blemish is left on the green.

2. There is a chance that the raised turf caused by the ball will dry quickly and may die out.

3. The open soil invites weed invasion, such as crabgrass, silver crabgrass, POA ANNUA, dandelion, plantain, or Pearlwort. . . seed of which could be brought in on the shoes of golfers, caddies or workers or on mowing equipment.

4. The improperly repaired or neglected ball marks leaves a bumpy spot in the green. If not corrected before cutting the next day, then the spot is scalped by the mower and the bruise mark remains for several days. This is especially noticeable in the Northeast during the summer season.

William H. Bengeyfield, Western

Sisco
ENGINEERED RAIN

Turf Topics

Precision Controllers With Unmatched Flexibility.

J-M Buckner is first in the industry to offer you solid-state microelectronics in an irrigation controller. Our KCS line of controllers are as easy to operate as pocket calculators. KCS offers unmatched flexibility with 12 or 24 individual circuits and four 14-day schedules . . . all with timing accuracy down to a fraction of a second. The KCS totals daily watering time, allows skipping up to nine days, has both automatic and manual syringe cycles for services such as dew removal and many more unique features. Operation is simple, fast and accurate.



Now is the time to consider converting existing quick coupling valves or manual systems to automatic -- with J-M/Buckner, solid state KCS automatic equipment and new automatic valves and sprinkler heads.

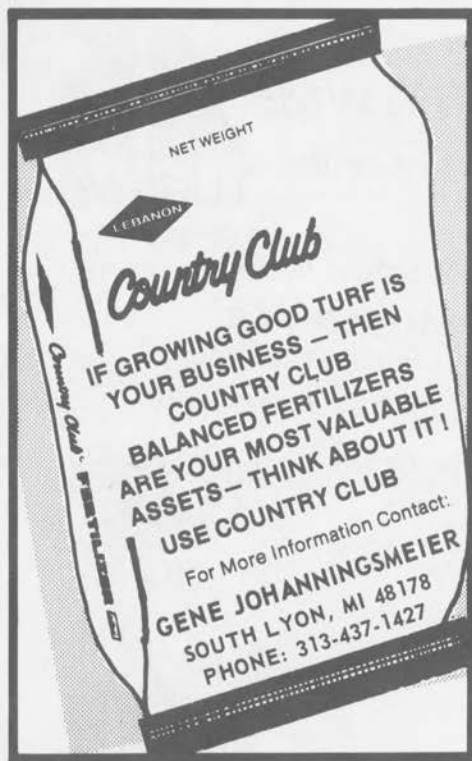
You may do it yourself -- or check with Jim Vince, Nick Licari or Mike Byrnes, on design and installation.

make natural beauty automatic

Write or call direct

Sisco
ENGINEERED RAIN

Sprinkler Irrigation Supply Co. A division of A.J. Miller Inc.
1316 No. Campbell Rd. Royal Oak, Mi. 48067 Phone (313) 398-2233



If you have changed your address, please let us know so we can keep our addressing plates up to date.

Present Address:

NAME _____

ADDRESS _____

CITY _____ STATE _____ ZIP _____

Fill In New Address:

NAME _____

ADDRESS _____

CITY _____ STATE _____ ZIP _____

Mail this form to:

A PATCH OF GREEN

31823 Utica Road
Fraser, Michigan 48026

Director of the Green Section, says:

"From an agronomic viewpoint, a ball mark bruises the grass plant and severely damages or destroys the meristem or growing point. This means that turf recovery must take place from the perimeter of the damaged area, and this takes considerable time. Rapid drying of the damaged area is a major factor in delaying recovery. Some soil compaction also results from the ball's impact.

How To Make Repairs

There is a correct way to repair a ball mark and, simply stated, it is to stretch the turf back over the bruised area, then loosen the soil beneath so that the bruised turf is able to root again.

To loosen the soil, some sharp-pointed instrument is required, such as a golf tee. The instrument must be sharp enough to penetrate the soil easily, and strong enough to cut through soil laterally at a depth of one inch or less.

In stretching the turf back over the ball mark area, try not to tear it loose. After the soil is loosened, the bruised and stretched turf must be firmed or pressed down to make contact with the soil again; otherwise, it may dry and die.

If a divot is taken when the ball hits the green and skids, the divot must be carefully stretched and replaced.

GOLF IN THE LATER YEARS

My muscles are flabby;

I can't hit a drive.

My mind often doubts if

I'm really alive.

My chipping is lousy,

I never could putt.

I guess I'll just stay home and
just sit on my butt.

My iron plays awful,
my woods are as bad,

I'm describing my game as a
shade short of sad.

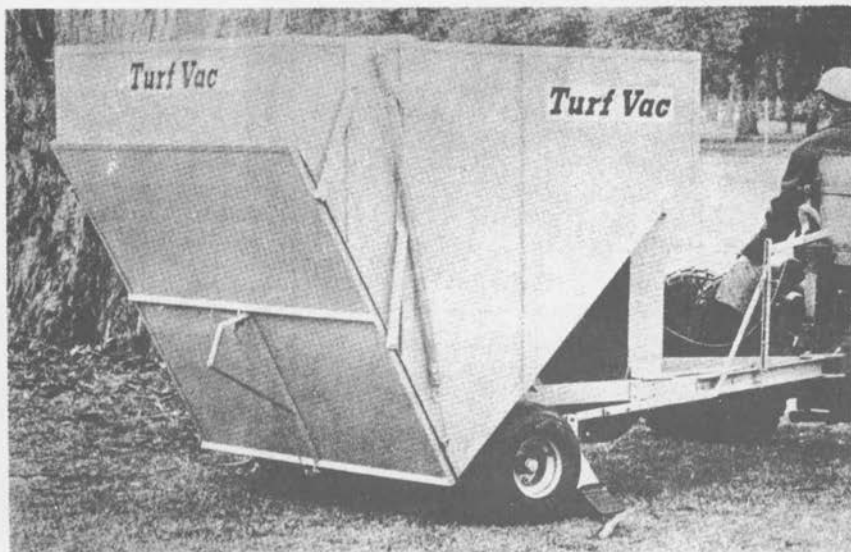
So the outlook today is for
grief and for sorrow.

Say! who can we get for a
fourth tomorrow?

Now! A Full Five-Foot Wide Model-FM5 Turf Sweeper by



- * PICKS UP EFFICIENTLY
- * FULL 5' SWEEP
- * HUGE HOPPER CAPACITY
- * EASY DUMP
- * FLOATING SCOOP
- * EASY TRANSPORT
- * LOW MAINTENANCE
- * PICKS UP WET OR DRY



Engine: 14 HP

Frame: welded structural steel

Hopper: 5 cu. yards

Welded steel construction

Overall: Width 5'-4"



CALL FOR A DEMONSTRATION

LAWN EQUIPMENT CORPORATION

520 W. 11 MILE ROAD ROYAL OAK, MICH. 48068

TELEPHONE: 313-398-3636

JACOBSEN



154-154T SWEEPERS

The patented rubber pick-up fingers is the reason that the Jacobsen Model 154 Sweeper picks up the debris that other sweepers leave behind. Two reels of counter-rotating, interlocking rubber fingers pick up everything in sight . . . from small branches to cigarette butts. They'll police your grounds better than a company of recruits. With a 48" sweeping width and a one cubic yard hopper capacity, the Jacobsen Sweeper lets you stay ahead of the job.

The Model 154 self-propelled Sweeper (pictured above) and the Model 154T pull behind Sweeper are designed to sweep wet and dry clippings, leaves, rocks, cans, bottles, branches and litter of both, turf and hard surfaces.

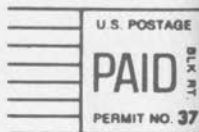
— CALL 313-647-7700 FOR A DEMONSTRATION —

W.F. Miller Garden & Lawn
Equipment Company

1593 S. WOODWARD AVE. BIRMINGHAM, MICHIGAN 48011
TELEPHONE: (313) 647-7700

"A Patch of Green"

31823 UTICA ROAD
FRASER, MICHIGAN 48026



MICHIGAN STATE UNIVERSITY
LIBRARY - SERIALS
EAST LANSING, MICH. 48823