

February 1980

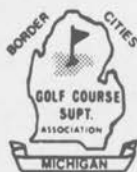
Property of  
JAMES B. BEARD  
Soil, Crop Sciences Dept.  
Texas A&M Univ.



A PATCH  
of  
GREEN

*JB*  
BEARD  
COLLECTION

Official Publication of the  
Michigan & Border Cities Golf Course Superintendents Association



**MICHIGAN & BORDER  
CITIES GOLF COURSE  
SUPERINTENDENTS  
ASSOCIATION**

**PRESIDENT**

**JAMES TIMMERMAN, CGCS**  
ORCHARD LAKE COUNTRY CLUB  
7183 Buckthorn  
Orchard Lake, Michigan 48033  
Off. 682-2150, Res. 682-7234

**VICE PRESIDENT**

**ROBERT HOPE, CGCS**  
THE LOCKMOOR CLUB  
20740 Marter Road  
Grosse Pointe Woods, Michigan 48236  
Off. 881-8112, Res. 884-8684

**SECRETARY-TREASURER**

**BRUCE WOLFROM, CGCS**  
BARTON HILLS COUNTRY CLUB  
435 Stein Road  
Ann Arbor, Michigan 48103  
Off. 662-8359, Res. 663-9213

**BOARD OF DIRECTORS**

**KEVIN DUSHANE**  
WABEEK COUNTRY CLUB  
2191 Greer  
Sylvan Lake, Michigan 48033  
Off. 852-1689, Res. 681-3515

**MICHAEL EDGERTON**  
MEADOWBROOK COUNTRY CLUB  
3066 Sesame  
Howell, Michigan 48843  
Off. 349-3608, Res. 517-546-5927

**CHARLES GAIGE**  
LAKELANDS GOLF & COUNTRY CLUB  
7390 Rickett  
Brighton, Michigan 48116  
Off. 231-3003, Res. 227-4617

**ED HEINEMAN**  
WATERS EDGE COUNTRY CLUB  
10531 Bellevue  
Grosse Ile, Michigan 48138  
Off. 675-0927, Res. 676-3095

**FRITZ MC MULLEN, CGCS**  
FOREST LAKE COUNTRY CLUB  
3912 Fieldview  
Orchard Lake, Michigan 48033  
Off. 335-1410, Res. 363-8030

**CHRIS MYERS**  
BLOOMFIELD HILLS COUNTRY CLUB  
2831 Saturn Drive  
Lake Orion, Michigan 48035  
Off. 642-0707, Res. 391-2074

**PRESIDENT EMERITUS**

**CLEM WOLFROM**  
DETROIT GOLF CLUB  
530 Kendry  
Bloomfield Hills, Michigan 48013  
Off. 345-4589, Res. 334-0140

**"A PATCH OF GREEN"**

Published monthly by the  
**MICHIGAN AND BORDER CITIES GOLF  
COURSE SUPERINTENDENTS ASSOCIATION**

Circulation: 1,250

**Ted Woehrie, CGCS, Oakland Hills C.C.**  
**James Timmerman, Orchard Lakes C.C.**  
**CO-EDITORS**

Printed At

**BLAKEMAN PRINTING COMPANY**  
31823 Utica Road  
Fraser, Michigan 48026  
Phone: (313) 293-3540

**MONTHLY ADVERTISING RATES**

Double Page Spread.....	\$150.00
Back Outside Page.....	75.00
Full Page.....	65.00
Half Page.....	40.00
Quarter Page.....	30.00
Eighth Page.....	15.00
Sixteenth Page.....	10.00
Classified Ad (per column inch).....	7.50

DISCOUNT RATE: One Year 10%

Note: Advertising fees may not be deducted  
from the above rates.

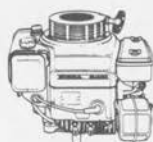
*This Month's  
Advertisers...*

**Benham Chemicals**  
**Crown Lubricant & Specialties Ltd.**  
**FDS Fertilizers, Inc.**  
**Golf Car Distributors**  
**Lakeshore Equipment Corporation**  
**Lawn Equipment Corporation**  
**Lebanon/Agrico**  
**W.F. Miller Garden & Equipment**  
**Oxford Peat Company**  
**O.M. Scott & Son, Inc.**  
**Wm. F. Sell & Son, Inc.**  
**Sprinkler Irrigation Supply**  
**Terminal Sales Corporation**  
**Tire Wholesalers, Inc.**  
**Turfgrass, Inc.**  
**Turf Supplies, Inc.**  
**USS Agri-Chemicals**  
**Wilkie Turf Equipment Corporation**

# SUPERINTENDENTS - CHOOSE HONDA FOR 1980

## HONDA ENGINES

Recondition your equipment this winter with a Honda.  
Built tough for Dependability - Durability - Quiet  
Precision Engineering - Economy



### ENGINE SPECIFICATIONS

Horsepower	Model	Type	Variation	Horizontal Shaft	Vertical Shaft	Crankshaft P.T.O.	6 TO 1 Reduction	2 TO 1 Reduction	Mech. Governor	Top Gov. Speed No Load	Recoil Starter	Starter 12v	Points Type Ignition	C.D.I.	Air Cleaner*	Fuel Tank (Qt.)	Weight
3.5	GV150	A1			X	3 5/32 x 7/8 DIA. TAPPED 3/8 24 UNF.				3600	X	X		SD	2.12	28.7	
	GV150	A2			X	2 7/16 x 7/8 DIA. TAPPED 3/8 24 UNF.				3600	X	X		SD	2.12	28.7	
	G150	Q	AF	X		2 7/16 x 3/4 DIA. TAPPED 5/16 24 UNF.			X	4000	X	X		OB	2.64	29.8	
	G150	PE	AF	X		2 7/16 x 5/8 THREADED			X	4000	X	X		OB	2.64	29.8	
	G150	HQ	AF	X		2 3/4 x 3/4 DIA.	X	X	X	4000	X	X		OB	2.64	37.1	
5	GV200	(1)	N40		X	3 5/32 x 1 DIA. TAPPED 3/8 24 UNF.			X	3200	X		X	DE	2.01	37.5	
	GV200	(2)	N50		X	1 13/16 x 1 DIA. TAPPED 7/16 20 UNF.			X	3200	X		X	DE	2.01	37.5	
	GV200	(3)	N4C		X	3 5/32 x 1 DIA. TAPPED 3/8 24 UNF.			X	3700	X	X		DE	OPT.	35.3	
	G200	Q	AF	X		2 7/16 x 3/4 DIA. TAPPED 5/16 24 UNF.			X	4000	X	X		OB	3.68	33.1	
	G200	V	A5	X		2 53/64 x 0.755 DIA. TAPER 2 1/4 PER FT.			X	4000	X	X		OB	3.68	33.1	
	G200	PE	AF	X		2 7/16 x 5/8 THREADED			X	4000	X	X		OB	3.68	33.1	
	G200	S	AG	X		2 3/64 x 22 mm DIA.	X	X	X	4000	X	X		OB	3.68	46.5	
	G200	HQ	AF	X		2 3/64 x 3/4 DIA.	X	X	X	4000	X	X		OB	3.68	41.5	
7	G300	Q	B6	X		3 31/64 x 1 DIA. TAPPED 7/16 20 UNF.			X	4000	X		X	DE	6.36	48.5	
	G300	V	B6	X		4 11/64 x 7/8 DIA. TAPER 2 1/4 PER FT.			X	4000	X		X	DE	6.36	48.5	
	G300	S	B7	X		2 3/32 x 22 mm DIA.	X	X	X	4000	X		X	DE	6.36	63.5	
	G300	HQ	B6	X		3 7/32 x 1 DIA. TAPPED 7/16 20 UNF.	X	X	X	4000	X		X	DE	6.36	59.0	
	G300	Q	J0	X		3 31/64 x 1 DIA. TAPPED 7/16 20 UNF.			X	4000	OPT.	X	X	DE	6.36	59.0	
10	G400	Q	B6	X		3 31/64 x 1 DIA. TAPPED 7/16 20 UNF.			X	4000	X		X	DE	6.36	66.1	
	G400	V	B6	X		4 11/64 x 7/8 DIA. TAPER 2 1/4 PER FT.			X	4000	X		X	DE	6.36	66.1	
	G400	Q	J0	X		3 31/64 x 1 DIA. TAPPED 7/16 20 UNF.			X	4000	OPT.	X	X	DE	6.36	76.0	
11	GV400	(4)	AA		X	3 5/32 x 1.0 DIA. TAPPED 7/16 20 UNF.			X	3550	X	X		DE	2.44	61.7	
	GV400	(5)	AB		X	3 5/32 x 1.0 DIA. TAPPED 7/16 20 UNF.			X	3550	X	X		DE	OPT.	61.7	
	GV400	(6)	JB		X	3 5/32 x 1.0 DIA. TAPPED 7/16 20 UNF.			X	3550	X	X	X	DE	OPT.	68.4	
	GV400	(7)	JD		X	3 5/32 x 1.0 DIA. TAPPED 7/16 20 UNF.			X	3550	OPT.	X	X	DE	OPT.	66.2	

TYPE: (1) N40 with CDI & Extended Oil Filler Tube  
(2) N50 with CDI & Extended Oil Filler Tube  
(3) N4C (without tank, oil filler tube, with S-type muffler)  
(4) AA - STD. type

(5) AB - STD. type (with SN muffler, w/o fuel tank)  
(6) JB - Electric Start (with SN muffler and recoil starter, w/o fuel tank)  
(7) JD - Electric Start (with 80w lamp coil, w/o fuel tank and muffler)

\* SD - SEMI-DRY  
OB - OIL BATH  
DE - DUAL ELEMENT



## GOLF CAR DISTRIBUTORS

1980 W. WIDE TRACK DR. (US 10) PONTIAC, MICH.  
338-0425 MON. - FRI. 8 - 5, SAT. 8 - 1



Easy Terms  
To Fit Your Budget

SPECIAL PRICES TO M.B.C.G.C.S.A. MEMBERS

# Control of Creeping Speedwell in Turfgrass

John E. Kaufmann, Michigan State University, East Lansing

Creeping speedwell (*Verronica filiformis*) has recently become an important lawn pest because it is competitive in well-maintained, irrigated lawns and golf courses. While its spread is more rapid in shade, it can survive and spread in sunny areas as well. Creeping speedwell spreads by both seed and vegetative parts. During cool weather of spring and fall, cuttings are dragged by the mower to new sites where they easily root when in contact with the soil.

Creeping speedwell was introduced into the United States as early as 1930 as a rock garden plant because it had an attractive blue and white flower. Subsequently it escaped into adjacent lawns. Although a somewhat localized problem, it is considered serious because of (1) its disease susceptibility, (2) lack of tolerance to extreme environments, and (3) general disruption of lawn uniformity. Most major metropolitan areas have at least one older subdivision densely infested with creeping speedwell. Often the origin of the weed in a locale can be traced back to a single homeowner who imported the weed.

Creeping speedwell is tolerant of 2,4-D, and has varying degrees of tolerance to silvex, MCPP and dicam-

ba. In the 1950's, 1 pound per acre of endothall was found to control creeping speedwell. Higher rates were too toxic to desirable grasses while lower rates were not effective in controlling the weed. However, endothall treated areas were often reinfested within two years.

Since creeping speedwell may cover 80 to 90 percent of the area, chemical control measures must include methods to reestablish desirable turfgrass species. Recently, Dacthal (DCPA), Roundup (glyphosate) and Atrinal (HLR Sciences) have been found to effectively control creeping speedwell.

If site examination indicates insufficient desirable turfgrasses present for reestablishment, Roundup can kill both creeping speedwell and turfgrasses, but will allow reseeding of the treated area soon after application.

Atrinal has been used as an experimental chemical growth retardant of turfgrasses as well as for selective control of creeping speedwell. In areas where creeping speedwell covers 80 percent or more of the surface, Atrinal inhibits rather than encourages remaining turfgrasses to fill in areas left vacant by the pest. Thus the role of Atrinal in controlling creeping speedwell would be in areas where

Continued on page 17



## Helping the superintendent through turf research...

- Controlled Release Fertilizers
- Fertilizer/Pesticide Combinations

- Fungicides—Herbicides—Insecticides
- Soil Testing—Weed & Disease Identification

**SCOTTS • LELY • GANDY SPREADERS**

Finest quality turfgrass seed—Fairways • Greens • Tees • Roughs  
Scotts Windsor and Victa blends

**Jim Brocklehurst**

Technical Representative  
1964 Catalpa  
Berkley, Michigan 48072  
Telephone: 313-547-9632

# Grooming The Putting Surface

by James T. Snow, Agronomist, Northeastern Region

To most golfers, turf management involves little more than mowing, fertilizing, irrigating and occasional applications of chemicals to control various unidentified pests. The many details of a good turfgrass management program go unnoticed by most of us, and perhaps this is as it should be.

One of these details which golf superintendents concern themselves with is the grooming of the putting surface. Providing a smooth, true, fast surface involves much more than frequent mowing. Many little tricks of the trade are utilized to obtain the desired results.

To appreciate fully why some of these techniques are necessary and how they work, it is helpful to understand how the putting green grasses grow if they receive only minimum maintenance. Both bentgrass and bermudagrass, two of the most important grasses cultured for use on greens in this country, tend to produce prostrate-type growth when they receive a minimum program of regular mowing. If allowed to continue, this results in a textured, leafy appearance which is sometimes referred to as grain. Grain is the subject of lengthy arguments in many locker rooms, but there is little doubt that slow, bumpy, untrue greens are one of the consequences.

To combat this problem, techniques have evolved to force the prostrate-type growth to grow more upright. The results are comparable to putting on a shag rug versus putting on a tightly-knit, dense carpet, although the actual cutting height has much less to do with the difference than many people believe.

Perhaps the best place to begin a program of grooming the putting turf is with the greens mower itself. Some models have accessory brushes which

can be mounted to the frame and project out in front of the mower as it moves across the green. These brushes are made of wire or thin metal strips and act to fluff up the turf, especially the prostrate-type growth, before it is mowed to produce a crisp, clean cut. Another accessory is the comb, which is mounted near the front roller on the mowing unit. It is simply a bar with metal teeth which project down into the turf and fluff it up before it is cut. Also, a special grooved roller, called the Wiele Roller, can be used instead of the traditional solid roller on the front of the mowing unit. This grooved roller tends less to mat the grass down before it is cut than the other. These three accessories are inexpensive and convenient to use. They function as part of the mowing machine and do not require an extra operation to achieve the desired results. However, sometimes other techniques also must be employed to combat successfully the buildup of grain on the greens.

An effective, easy method is to drag some type of mat across the turf surface before the green is mowed. This works on the same principle as the mower-mounted brushes, but good results are achieved usually much faster. The mats are made often of metal, but any convenient material may be used. In fact, utility brooms are used often to brush the greens before mowing.

Another very effective technique for grooming the turf is to vertical mow the greens. This is known also as verticutting the greens and involves the use of specialized mowing units with vertical cutting blades to cut down into the turf surface. They are similar to the units available to

Continued on page 18

## Today's Confusing Economic Language



Have you ever wondered what some of these terms meant when you heard them? . . . Budget deficit, Consumer Price Index (CPI), Depression, Gross National Product (GNP), Inflation, Prime Rate, Recession, Stagflation.

**Budget deficit**—A situation in which the government spends more than it takes through taxes and other revenue. Governments finance deficits by borrowing from the public. The interest on the public debt becomes part of government spending in future years.

**Consumer Price Index (CPI)**—A statistical figure that measures the change in price of a selected market basket of goods assumed to be purchased by the average urban worker with a wife and two children (often called the cost-of-living index).

**Depression** — A period of low general economic activity marked especially by unemployment.

**Gross National Product (GNP)** — The total dollar value of goods and services produced by the economy in a given year. It is the broadest measure of the health of an economy. "Real"

GNP is the GNP adjusted to eliminate the distorting effects of inflation.

**Inflation** — The situation in which prices in general are rising. There are two kinds of inflation: Cost-push inflation which comes about because special interests have the power to force wages or prices up on their own; excess-demand inflation which occurs when demand for goods and services rises more swiftly than the society's ability to produce them. Both types of inflation may occur at the same time.

**Prime rate** — The rate of interest charged by commercial banks for short-term loans to the most credit-worthy corporations.

**Recession** — A period in which the economy's output of goods and services undergoes a prolonged, deep decline. Many economists consider a recession a decline in real Gross National Product that stretches on for more than six months.

**Stagflation** — A new word coined several years ago to describe the situation in which output is constant or falling (stagnation) while prices are rising (inflation).

— *The International Teamster, Nov. '74*

## CROWN LUBRICANT & SPECIALTIES LTD.

Lubricants  Designed  
to make the Superintendent's job easier.

---

WE ARE GEARED TO SERVE YOU BETTER

---

CHAS. W. KING  
313/525-3902

BOX 2065  
LIVONIA, MICH. 48151

CHAS. W. KING, JR.  
313/398-5964

**ANNOUNCEMENT-From  
Dr. Harry Niemczyk**

The first national "Symposium on Turfgrass Insects" will be held Tuesday and Wednesday, October 14 and 15, 1980, in Columbus, Ohio.

This scientific meeting will be sponsored by the Chem Lawn Corporation and is *open to everyone*.

As the time for this Symposium approaches, more information on the program, lodging, registration, etc. will appear in the Patch of Green.

---

**Midwest Regional Turf Conference**

March 3 - 5, 1980

Purdue University

Once again the program will be divided into three segments.

Private and Public golf course operations and the Lawn Care Industry. The Program looks great. There will also be a portion devoted to athletic fields on Wednesday morning, March 5, 1980.

16 Attend USGA Meeting in Chicago  
January 25, 1980

Ted Woehrle  
Clem Wolfrom  
Bruce Wolfrom  
Jack Lorenz  
Harry Schuemann  
Ward Swanson  
Jim Timmerman  
Glenn Korhorn  
Mike Edgerton  
Chris Myers  
Lee Bidwell  
Roger Barton  
Al Bidwell  
Jeff Gorney  
Gerald Faubel  
Roy Peck

---

Many ideas grow better when transplanted into another mind than the one where they sprang up.

Oliver Wendell Holmes

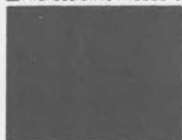
*SWIFT AGRICULTURAL  
CHEMICAL CO.*

*Is Proud to Announce ...*

**BENHAM CHEMICALS**

*As Their NEW Par-Ex IBDU*

**par ex**  
PROFESSIONAL PRODUCTS



**624-3200**

*Distributor.*

*Benham Chemicals*

*3190 Martin Rd.*

*Walled Lake, MI 48088*

WAREHOUSE PHONE: 834-3010

# 6 ANSWERS TO QUESTIONS WE NEVER THOUGHT YOU'D ASK (BUT DECIDED TO ANSWER ANYWAY)

**1** Yes, GCSAA can help you become a better superintendent. One way it does this is through educational seminars and conference sessions it sponsors each year to help you become better informed about turfgrass diseases, pesticides, landscaping and management practices.

**2** Yes, GCSAA is helping to further the advancement of the turfgrass industry. Through the GCSAA Scholarship & Research Fund, Inc., GCSAA provided more than \$13,500 last year in research grants to leading turfgrass programs. GCSAA also provides educational opportunities to turfgrass students through annual turfgrass scholarships.

**4** Yes, GCSAA offers recognition for superintendents. Through its public relations efforts, its magazine, and its award programs, GCSAA helps promote the image and the professionalism of the superintendent. GCSAA also provides information to superintendents about how they can use public relations to promote their own image to their course, their community and their association.

**3** Yes, GCSAA provides a meeting ground for superintendents. Each year, GCSAA sponsors an annual conference and show for its members. Last year more than 6,500 educators, industry representatives and members from all over the world attended. GCSAA's executive committee decided at its last board meeting that the conference experience is so valuable that first-year members should be encouraged to attend by being given free admission.

**5** Yes, GCSAA provides each member with a life insurance program. Supplemental insurance, disability and pension programs also are available.

**6** No, GCSAA can't help you with your golf handicap. You'll have to work on that yourself.



## GCSAA

The association that offers you  
more than just a name.

1617 ST. ANDREWS DRIVE • LAWRENCE, KANSAS 66044  
913 / 841-2240



# Walter Buetikofer



Walter Buetikofer and his wife Isabel (Dodie)

Walter Buetikofer, the singer-entertainer from Erie, Pennsylvania, came to Detroit in about 1936. Walter bought out the Ideal Mower Sales & Service, that had been struggling to stay alive for many years. Not knowing much about the mower business, he joined the Michigan & Border Cities Golf Course Superintendents Association. His friendly association with us started by singing Wagon-Wheels at the Meetings, and he won the friendship and good will of all our membership. We looked forward to Walter's songs and the sing-alongs we so often had.

In about 1940, Walter started the first Christmas party for all the members and their wives. The first time we were to take the girls with us. It

was at his office. Two of the girls baked a turkey and each of the men brought a bottle on their hip. Walter furnished the mix, entertainment, and prizes. We often played bunko. This was the beginning of the fine Christmas party we have today. Walter always attended and supported our Turf Conferences at Michigan State University and liberally supported our Turf Foundation and Turf Research work these many years and still does to this day.

Congratulations, and thank you for all the nice things you did for your friends and the Michigan & Border Cities Golf Course Superintendents Association.

***No synthetically produced fertilizer can compare with  
MILORGANITE***

Golf Courses Use More

**MILORGANITE**

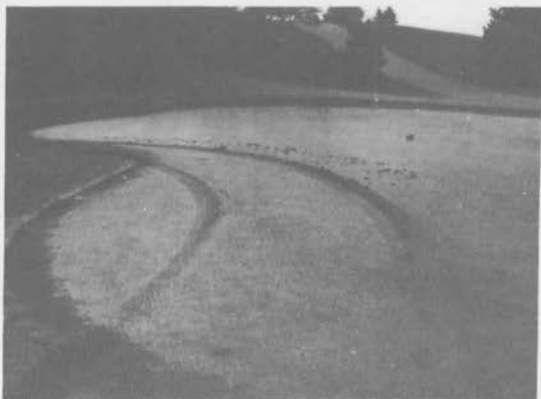
Than Any Other Fertilizer



**TERMINAL SALES CORP.**

12871 EATON AVE.  
DETROIT, MICH. 48227  
(313) 491-0606

## Driving Damage on Golfing Surfaces



Typical vandalism - Easy to repair, but damage remains visible for a long time.

Driving on white frost - Damage remains for several days.



*"PREMIUM PRODUCTS - Economically Priced"*

We Distribute:

**Fertilizers**  
**Chemicals**  
**Lime & Gypsum**  
**Trees & Shrubs**

**Seeds**  
**Accessories**  
**Paving Blocks**  
**Equipment**



**F D S FERTILIZERS, INC.**

5324 W. BLOOMFIELD LAKE • W. BLOOMFIELD, MI. 48033  
PHONE: (313) 851-7766



**TORO**

worth more

**GREENSMASTER 3<sup>®</sup>**

**Still the leader...  
...outsells competition two to one.**

**Features like: Thatching Reels  
Powered spikers  
Variable Quick Height of Cut  
Unit Interchangeability**

**Backed by The Toro Promise - and  
Wilkie Turf Equipment Company**

**WILKIE TURF *Equipment Company***

P.O. BOX 749 • PONTIAC, MICHIGAN 48056  
1050 OPDYKE ROAD • PHONE (313) 373-8800

## USGA OFFICERS FOR 1980

President	Will F. Nicholson, Jr.	Denver, Colo.
Vice-President	William C. Campbell	Huntington, W. Va.
Vice-President	James R. Hand	Ossining, N.Y.
Secretary	William J. Williams, Jr.	New York, N.Y.
Treasurer	William C. Battle	Eden, N.C.
<u>NEW GENERAL COUNSEL</u>	John C. Baity	Mamaroneck, N.Y.
<u>NEW EXECUTIVE COMMITTEE MEMBERS</u>	C. Grant Spaeth	San Francisco, Calif.
	J. Kimball Whitney	Wayzata, Minn.
<u>RE-NOMINATED TO EXECUTIVE COMMITTEE</u>	Howard J. Carey, Jr.	Hutchinson, Kans.
	Howard L. Clark	New York, N.Y.
	Gordon H. Ewen	Winnetka, Ill.
	James R. Gabrielsen	Atlanta, Ga.
	Stephen J. Horrell	El Cajon, Calif.
	John K. Mahaffey, Jr.	Pittsburgh, Pa.
	Edward E. Marshall	Bethayres, Pa.
	Arthur W. Rice, Jr.	Chestnut Hill, Mass.

### ARE YOU INTERESTED IN JOINING THE MICHIGAN AND BORDER CITIES GOLF COURSE SUPERINTENDENTS ASSOCIATION?

FILL IN THE QUESTIONNAIRE BELOW AND MAIL TO:



BRUCE WOLFROM, CGCS  
BARTON HILLS COUNTRY CLUB  
435 Stein Road  
Ann Arbor, Michigan 48103  
Office 662-8359, Residence 663-9213



DATE \_\_\_\_\_

NAME \_\_\_\_\_

ADDRESS \_\_\_\_\_

CITY \_\_\_\_\_ STATE \_\_\_\_\_ ZIP \_\_\_\_\_

OR YOU MAY CONTACT THE NEXT GOLF COURSE SUPPLIER WHO CALL ON  
YOU AND GIVE HIM THE INFORMATION NEEDED FOR APPLICATION.

# USS Tournament Plus 19-5-9... We'll help put the green back in your fairways!



If you're looking down yellow or off color fairways, take a walk on them with your local USS Vertagreen distributor as soon as possible. He'll show you how USS Tournament Plus 19-5-9 can be the answer to your problems. This great product, developed especially for fairways, will release 48% of its nitrogen content in a sustained, uniform manner because of the urea-formaldehyde

content. And that deep, dark green color will come from the sulfate of potash.

It also contains guaranteed amounts of secondary and micro-nutrients as well as chelated iron for uniform growth. USS Tournament Plus is another reason we say "see the best, for the best" — and that's your local Vertagreen distributor. He'll put the green back in your fairways.



**Agri-Chemicals**  
Division of United States Steel  
P. O. Box 1685, Atlanta, Ga. 30301

TRADE MARK

## *More Christmas Party Pictures*



Kenny, hard at work recruiting a new member.

Bill Madigan - having a good time.



It was a very enjoyable evening.

**Green Seminar  
at the  
Detroit Golf Club**

Remember this date: Saturday,  
March 8, 1980, 8:30 AM - 3:00 PM.

The GAM and Michigan and Border  
Cities GCSA plan on holding another  
one of their highly successful Green  
Seminars at the Detroit Golf Club.

- 8:30 - 9:30 Registration & coffee
- 9:30 - 10:30 Winter injury - panel
- 10:30 - 10:45 Break
- 10:45 - 11:45 Living with *Poa annua*  
Lunch
- 1:00 - 2:00 Sand topdressing -  
Energy
- 2:00 - 3:00 Course maintenance and  
the golfer.

Sometime during this program, the  
new USGA film "The golfer and the  
golf course" will be shown. DO NOT  
MISS THIS PROGRAM!

**LAKESHORE**

EQUIPMENT & SUPPLY CO.

HOME OF

**LESCO PRODUCTS**

And

**SULFUR COATED FERTILIZERS**

Distributor & Formulator

**GRASS SEED, FERTILIZERS**

**INSECTICIDES FUNGICIDES, HERBICIDES**

Call Us Today

**TOLL FREE**

**1-800-321-5325**

300 S. Abbe Rd. Elyria, Ohio 44035

Price Quotation On Request

(216) 323-7544

"For Land's Sake - Use Peat"



**OXFORD PEAT CO.**

1430 E. Draher Rd.

Oxford, Michigan 48051

**PROCESSED PEAT**

Bulk or Bag

Custom Blending

FRED LATTA

313/628-5991

**URFCRASS**

**JOIN THE THRIFTY**

*Country Club*

*Early Bird*

**ORDER EARLY**

Eugene D. Johanningsmeier  
437-1427

# Did You Know?

5.3% of the land surface area of Michigan is maintained in some form of turfgrass?

Turfgrass maintenance generates more than \$500 million of business each year in Michigan?

Michigan's more than 500 golf courses play an important role in the business "environment" of the State of Michigan?

Over \$750,000 of revenue to the State of Michigan is derived each year from tourists who indicate on surveys that golf is the primary reason for their visit?

---

## LATE ANNOUNCEMENT

This announcement will be too late for this year, but plan to attend next year's meeting.

February 13-14, 1980

Public Golf Course

Operations Institute

MSU - Kellogg Center

"Up front Golf Course Management"

Power Carts - Lease or purchase

Golf Fees and Charges

Golf Course Safety

Operation of Golf Driving Ranges

Golf Special Events

Off Season Activities

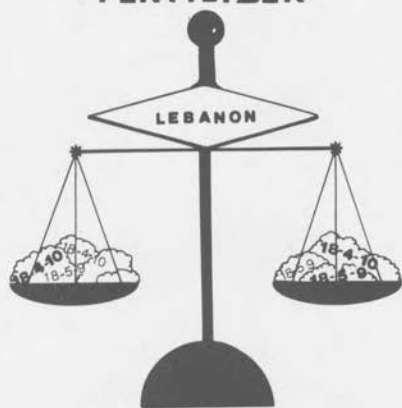
Promoting Golf Operations

---

## EDITORIAL NOTE

In case you find any mistakes in this magazine, please remember they are put there for a purpose. We try to offer something for everyone in this magazine. Some people are always looking for mistakes.

# COUNTRY CLUB THE BALANCED FERTILIZER



.....a valuable asset....  
in growing good turf

FOR MORE INFORMATION CALL  
LEBANON CHEMICAL CORP.  
P.O. Box 647 Danville, IL 61832

If you have changed your address, please let us know so we can keep our addressing plates up to date.

### Present Address:

NAME

ADDRESS

CITY

STATE

ZIP

### Fill In New Address:

NAME

ADDRESS

CITY

STATE

ZIP

Mail this form to:

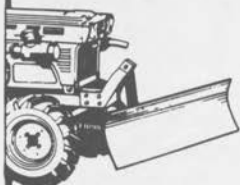
**A PATCH OF GREEN**

31823 Utica Road

Fraser, Michigan 48026



# PUSH!



Kubota front dozer blades are available for B-Series and L-Series Kubota diesel tractors, and are ideal for a wide variety of dozing type functions.

AS LOW AS **\$523**

A FULL LINE OF  
MID-RANGE DIESEL  
TRACTORS AND IMPLEMENTS

**KUBOTA**

Test drive a Kubota Diesel Tractor now at:

**WM. F. SELL & SON, INC.**

16555 TELEGRAPH ROAD  
TAYLOR, MICHIGAN 48180  
Telephone: 313/282-5100

## TURF SUPPLIES INC.

6900 Pardee Rd., Taylor, Michigan  
(313) 291-1200

DON'T EVEN THINK  
OF BUYING . . . . .

GRASS SEED  
FERTILIZERS  
FUNGICIDES

WITHOUT CALLING  
**291-1200**

## TURF SUPPLIES INC.

6900 Pardee Rd., Taylor, Michigan  
(313) 291-1200

### Creeping Speedwell cont.

pest density is 50% or less.

Dacthal is normally used as a pre-emergence herbicide for annual grasses. Surprisingly, it also is an effective herbicide in turfgrass for the selective post-emergence control of creeping speedwell. Dacthal is advantageous because it can kill creeping speedwell, prevent the establishment of annual grassy weeds, but allow perennial turfgrasses on the site to grow and spread throughout the treated area. Chemical treatment of creeping speedwell is most effective when the plant is actively growing, usually in the spring or fall.

In research trials, granular formulations of Dacthal did not control creeping speedwell, indicating that Dacthal must be applied to and absorbed by the foliage. Both the wettable powder and the flowable formulations were effective.

Flowing application of Dacthal, the visual appearance of the lawn is improved. Creeping speedwell, normally yellow-green in color, will darken and blend better with the turfgrasses. This symptom remains for 4 to 5 weeks. At the end of that period, the creeping speedwell begins to curl, wilt and disintegrate. At no time does the pest turn the yellow or brown color that is commonly associated with herbicide injury.

Dacthal applied on creeping speedwell at the recommended rate and time for preemergence crabgrass control in the spring has been found to control both pests very effectively. Fall treatments of Dacthal may not kill creeping speedwell until the following spring. The pest may still appear dark green and healthy at snowfall but will simply be non-existent after the snow melts. The fall treatment has been used very successfully on golf courses since at no time does the golfer notice adverse symptoms.

---

To achieve all that is possible, we must attempt the impossible.

---

## Grooming Putting Surface cont.

the homeowner from rental centers and are used for dethatching lawns. This technique is based on the principle that the vertical blades will cut through the thatch and remove the prostrate-type growth, to produce a smooth, true putting surface. The secret of this operation is to set the units very shallow, so that they just nick the surface of the turf. A good rule of thumb is that if you can see the grooves the machine is making, it is cutting too deeply. It is recommended that verticutting be done frequently, several times per month is possible, especially during the spring and fall when weather conditions are favorable. Verticutting greens is a very effective means of controlling the grain, but it requires the purchase of a separate machine or units which fit into the triplex putting green mower, and it takes extra time to perform the operation. However, the results would appear to justify the means.

Other factors must be considered for the development and control of grain on greens including cutting height and frequency, fertility programs, topdressing programs, the species or variety of grass involved, etc.

---

To be as much as we can be, we must dream of being more.

---



## Tire Wholesalers Company, Inc.

19240 West Eight Mile Southfield, Mich. 48075  
(1/2 Mile West of Southfield Blvd)  
Phone: (313) 354-5644

**MICHELIN** **TRUCK-CAR** **TRAILER** **MOTORCYCLE** **INDUSTRIAL** **TIRES**

**UNIROYAL** **GOODYEAR**

WHOLESALE PRICES TO COMMERCIAL ACCOUNTS

**SUSCO**  
ENGINEERED RAIN

# Turf Topics™

## Precision Controllers With Unmatched Flexibility.

J-M Buckner is first in the industry to offer you solid-state microelectronics in an irrigation controller. Our KCS line of controllers are as easy to operate as pocket calculators. KCS offers unmatched flexibility with 12 or 24 individual circuits and four 14-day schedules... all with timing accuracy down to a fraction of a second. The KCS totals daily watering time, allows skipping up to nine days, has both automatic and manual syringe cycles for services such as dew removal and many more unique features. Operation is simple, fast and accurate.



NOW is the time to consider converting existing quick coupling valves or manual systems to automatic -- with J-M/Buckner, solid state KCS automatic equipment and new automatic valves and sprinkler heads.

You may do it yourself -- or check with Jim Vince on design and installation.

Write or call direct

**SUSCO**  
ENGINEERED RAIN

Sprinkler Irrigation Supply Co. A division of A.J. Miller Inc.  
1316 No. Campbell Rd. Royal Oak, Mi. 48067 Phone (313) 398-2233  
Chicago Sales Office/Warehouse  
1738 Armitage Court, Addison, Ill. 60101 (313) 629-7730

# HOWARD

## COMMERCIAL TURF EQUIPMENT



### COMMERCIAL 60" MOWER

The Howard 60" Commercial Mower with forward mounted cutting head affords maximum visibility, non-tracking performance and unparalleled trimming capabilities around and under bushes, chains, guard rails, picnic tables, etc. By having your cutting head out in front, independently attached, you can actually see the mower following the contour of the

ground, not the tractor. The Howard Commercial Mower with hydrostatic transmission enables you to set your cutting speed to an infinite range, between the speeds of 0 and 6.2 M.P.H., depending on your mowing conditions. The heavy duty transmission and differential allows for a responsive, yet smooth, operating forward and reverse action in open or congested areas. The transmission is backed by the strongest warranty in the field. The outstanding versatility of our tractor is evidenced by the attachments which are available. The attachments are quick change and may be run off our live P.T.O.



#### LAWN EQUIPMENT CORPORATION

520 W. 11 MILE ROAD ROYAL OAK, MICH. 48068

TELEPHONE: (313) 398-3636



## The E-Z-GO Maintenance Machine.

The E-Z-GO GT-7 Truck is a vital part of any efficient maintenance system.

The GT-7 is engineered for versatility and durability.

Its all-steel construction takes on the tough jobs longer.

# E-Z-GO

## TEXTRON

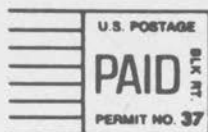
Call Now For A Demonstration And Price Quotation

**W. F. Miller** Garden & Lawn  
Equipment Company

1593 S. WOODWARD AVE. BIRMINGHAM, MICHIGAN 48011

TELEPHONE: (313) 647-7700

"A Patch of Green"  
31823 UTICA ROAD  
FRASER, MICHIGAN 48026



DEPT, SOIL & CROP SCIENCES  
TEXAS A & M UNIVERSITY  
COLLEGE STATION, TEXAS 77840  
ATTN: DR. JAMRS BEARD

**BEARD  
COLLECTION**