



MICHIGAN STATE NEWS

Daily Student Publication of Michigan State College

FRESHMAN
EDITION

Section 1

VOL. 332,334

EAST LANSING, MICHIGAN, SATURDAY, SEPTEMBER 9, 1944

20 PAGES

NO. 41

Today's Campus

... With Bells On

One of the first things to be seen and heard on the Michigan State campus is Beaumont tower.

Containing a clock and a carillon, the tower forms a picturesque sight when glimpsed through interlacing branches from almost any point on the campus.

As is usual with carillon clocks, Beaumont strikes four times for the quarter hour, eight for the half hour, 12 for the three-quarter hour and 16 times plus the hour on the hour.

When strains of the "Alma Mater" or "MSC Shadows" issue forth it is a pretty good indication that a carillonneur is at the levers.

... MSC Alma Mater

Sung to the familiar tune of Cornell's alma mater, Michigan State's song goes as follows:

Close beside the winding Cedar's
Sloping bank of green
Spreads the campus, alma mater
Fairest ever seen.

Swell the chorus, let it echo
Over hill and vale;
Hail to thee, our loving mother
MSC, all hail.

Other MSC songs include "MSC Shadows," which has been seriously considered for the alma mater; "MSC Fight Song," and "All Michigan State Men," with words by Glen Stewart, director of alumni relations.

... Green Frosh

One of the first things most freshmen remember about the college is the sight of seemingly hundreds of green pots dotting the campus. This year's class will most remember the sight of freshmen men wearing a placard inscribed in green block letters "Frosh," for the first week of school, instead of the traditional pots.

Record Wartime Enrollment of Coeds Approaches 2,377

Mason and Wells Halls to House Women

A total of approximately 2,377 coeds will live in 10 cooperative houses, three dorm annexes, East and West Mayo, North and South Williams and North and South Campbell dormitories, Mason and Wells halls, 14 sororities and in various off-campus houses this fall.

A record wartime enrollment of women students is anticipated for the 1944-45 school year, and in order to accommodate all of them, Mason hall and Wells hall, both formerly used exclusively as men's residences or army quarters have been taken over. There will be no doubling up in women's residences this fall with additional coeds in rooms planned to accommodate only two.

Mason hall will house 440 coeds and will continue to be managed by Curtis Beachum. Mrs. Margaret Luker, who was social hostess at Mason hall when civilian men lived there, will be hostess for the coeds.

Precinct Plan
Junior counsellors will be chosen in Mason hall to head precincts of 50 coeds each, as was the governing plan for the men. The counsellors will be given room and board free in return for this activity.

Wells hall will be divided into five sections, each independent of the other and managed by a

1,500 Expected For Freshman Week

From President Hannah

It is a real pleasure to welcome to Michigan State college the members of the class of 1948 and other students who are enrolled here for the first time.

We are particularly happy to welcome former members of the armed services. Every effort will be made to assist these men in every reasonable way. A servicemen's institute has been established under the direction of Dr. Fred T. Mitchell.

Each veteran will be dealt with as an individual. The college will try to work out a program that will assure



JOHN A. HANNAH

... college president ...

him the type of training that he wishes to acquire. It is suggested that all former service men arrange to visit with Mitchell and make use of the facilities of this institute.

A changing world and a radical change in America's future part in world affairs provide an added incentive for all young people to prepare for a useful part in that future.

The war has brought about a greater appreciation for trained minds and skilled hands. The armed services have found it necessary, not only to utilize all the trained personnel that was available but to institute great training programs of their own. Much of this training was necessarily directed toward the immediate objective of winning the war with little reference to the peace time utility of such training.

Our future rests in the hands of the engineers, chemists, physicists, bacteriologists and other trained scientists. Persons trained and with college degrees in the field of Veterinary medicine, Agriculture, Home Economics, Science and Arts, Engineering, and in the various fields of Business and Public Service, will find themselves in better position to serve in the peace following this war than those without college training. Every thinking young man and woman will acquire all of the educa-

See—HANNAH—Page 3

Enrollment Figures Increase Over Previous Total Mark

Activities Will Open Tuesday, Sept. 19; Each New Student to Be Assigned Faculty Counsellor for Guidance

Freshman enrollment at Michigan State this year will number an estimated 1,500 students, Registrar R. S. Linton predicted this week.

The total of freshman students will be somewhat higher than last year because of the increased number of women planning to attend MSC. Several 17 year-old men have registered and many returning war veterans will help swell final figures.

Class of 1948 To Test New Basic College

Core Courses Highlight Curriculum Change Set Up In Spring

Students of the class of 1948 will be the first group to enter Michigan State college under the new basic college curriculum set-up, which was approved by the state board of agriculture spring term, 1944.

The change in curriculum organization has as its main purpose, to give all students an opportunity to share in certain basic learnings regardless of what their life work is to be.

Contrary to some ideas concerning the set-up, the new system does not de-emphasize specialization, but supports it with an undergirding of broad training and education to help the specialist appreciate the relation of specialization to other activities and needs of society as a whole.

Under the new plan, students will take courses of general interest in a two year basic college instead of laying the groundwork for specialization. However, if a student knows definitely when he is as freshman, what his major is to be, he may go directly into courses in his field, while completing basic college requirements.

Students in the basic college curriculum will be required to take five of the seven courses offered. The seven include written and spoken English, biological science, physical science, social science, effective living, history

See—COLLEGE—Page 3

More Women Than Ever

One reason for the great number of women who are starting this year in excess of previous years, is that parents are making more money in war industries and are better able to afford to send their children to college.

Each incoming student has been assigned a counsellor and will follow the week's activities with a group under the supervision of that counsellor.

Transfer students and those freshmen already registered in summer school will join with others from all over the nation and South American and Pan-American countries to make up the total.

Freshmen Take Tests

In addition to arranging their schedules, classifying and paying fees, the new students will attend various meetings, take tests and attend certain social functions with the idea of getting acquainted with the college, its administrators and some of its professors.

Lack of civilian men on campus has greatly decreased the enrollment in some of the schools, Linton said. Incomplete figures showed 28 in Agriculture and 36 in Engineering, the two hardest hit by the man shortage.

Health Center Provides Student Medical Care

Freshmen entering MSC this fall will be required to take the usual physical examination required of all new students. Olin Memorial health center, located on the campus, is the scene of all medical activity for students.

The hospital provides excellent care for all students needing medical attention, with a staff of doctors and nurses headed by Dr. C. F. Holland.

fire wall. A junior hostess will be in residence in each section and will be either a graduate student or a married student who has returned to college.

There will be a parlor and junior hostess sitting room in each section for entertaining guests. Miss Mabel Nelson will serve as senior housemother in Wells hall.

Served Meals

North hall, formerly used as a women's dormitory, has been temporarily abandoned for such use and is being held in case of emergency. Meals in all residences will be served again this year except in Mason, where cafeteria style will be observed.

All women's dorms reverted to cafeteria style last year because of the crowded conditions which were not sufficient to allow all persons living in each dorm to be seated in the dining rooms at one time.

Freshmen in Dorms

Mayo will house 246 coeds this fall; Campbell, 300 plus 28 in the recreation room; Williams, 258 plus 32 in the rec room; Mason, 440; Wells, 180; annexes, 83; 10 co-ops, 153; 14 sororities, 407 and numerous off-campus houses, 250.

Freshmen women are required to live in the dormitories insofar as possible and are not permitted to live in sorority houses.



MICHIGAN STATE NEWS

Entered as second-class matter at the post-office, East Lansing, Mich. Office located on ground floor of east wing of Union Building Annex, room 8. Published daily except Sunday and Monday mornings during the regular school year and Thursday mornings during summer session by the students of Michigan State college.

Member Associated Collegiate Press
Telephone — College Phone 8-1511. Editorial Office—Ext. 269; Business Office—Ext. 268.
Subscription rates—3c per copy; \$3.00 per year by mail; \$1.50 per year by college carrier to students; \$2.25 per year by college carrier to non-students.

MEMBER OF THE ASSOCIATED PRESS
The Associated Press is exclusively entitled to the use for republication of all news dispatches credited to it or not otherwise credited in this paper and also the local news published therein. All rights of publication on special dispatches herein are also reserved.

FACULTY ADVISER A. A. APPLIGATE
MANAGER PEG MIDDLEMISS
EDITOR BARBARA DENNISON
ADVERTISING MANAGER, BARBARA FEARNside

TRADITIONS

Each Functions to Improve State

Now more than 80 years old, Michigan State college is rich in traditions which many generations of students leave with any college. As new students, if you know something about these traditions, it will help you to feel at home more quickly.

No one smokes on the campus north of the Red Cedar at Michigan State, except in the Union building and specially designated rooms in other buildings. There is no rule against smoking, but no one does it on the walks or in the classrooms.

Refraining from smoking on campus helps preserve its beauty and State's campus is rated the second most beautiful in the United States.

Another tradition students adhere to, for the same reason, is that of using the sidewalks so as not to cut paths across the lawns. Buildings and grounds men have scientifically laid out a maze of walks for every destination.

A third tradition is that all freshman men wear green caps, better known as pots, for the first few weeks on campus. By wearing pots, freshman men identify themselves with others and thus become better acquainted. These pots are sold during registration by members of Varsity club, an organization of major letter winners in athletics. Wearing of pots and adherence to the above tradition are enforced by the same organization.

Among the better known traditions observed by students at MSC is that only engaged couples sit on the engagement bench, north of Beaumont Tower, and women are not to be seen in the smoke shop. It is a man's territory.

More thoroughly adhered to than some rules, these traditions are a part of college life at State. It is the privilege and duty of all new students to maintain and perpetuate them.

Buy War Bonds and Stamps

STATE STUDENTS
MAKE ONE OF THEIR
FIRST STOPS AT—

CARR'S GRILL



You'll Like the
Spartan Spirit
and the Good Food

GRAND RIVER AVE.

Wolverine Yearbook To Depict MSC in '45

With fall term less than four weeks away, the 1944 Wolverine which is Michigan State's official yearbook, has begun to take form.

Editor for the coming year is Sui Foo, St. Johns senior, and business manager is Phyllis Boss, Lansing junior.



SUI FOO
... editor ...

The Wolverine organization has grown to a sizeable staff. Basically there are the editor and business manager and their assistants. The editorial staff has an assistant editor, copy and organizations, classes, and photography editors, each of whom has an individual staff working throughout the year on the material it is responsible for.

Persons filling these editorial positions for the coming year will be Dorothy Englehardt, Lansing junior, assistant editor; Sue Averill, Birmingham junior, copy and organizations; Bethany Beardslee, East Lansing sophomore, classes, and Bill Stickel, Detroit junior, photography.

The business staff includes Doris Englehardt, Lansing junior, office manager, and Doug Hird, Farmington senior, circulation manager.

There is opportunity for former high school yearbook staff members and other interested persons to join in the work of producing a large publication such as the Wolverine.

With Michigan State's return

to the field of intercollegiate sports competition, major sports will again take their place in the Wolverine after having been absent in last year's book.

Theme for the book this year is "MSC in 1945." A sales campaign will get under way with the beginning of freshman week and will continue throughout the year.



PHYLLIS BOSS
... business manager ...

Hi-Ya Chum

THE WOLVERINE

Welcomes the Class of 1948
and Urges You Not to Hesitate
to Keep Your Date to Buy
Your WOLVERINE—

VISIT THE WOLVERINE
BOOTH IN THE UNION—
FIND OUT ABOUT YOUR
COLLEGE AND ITS
YEARBOOK

Remember It's Your "'45 Yearbook
Jive" — So Come on '48 Don't Wait

GET HEP TO THE
REDUCED RATE.

FALL ——— \$4.50
WINTER ——— 5.00
SPRING ——— 5.50

WOLVERINE

College Functions to Give Students Broad Background Training

Freshmen Enter Newly Approved Curriculum Plan

(Continued from Page One)

of civilization and literature and fine arts.

Comprehensive Exams

No grades will be recorded for students taking the core courses until three terms of work have been completed and a comprehensive examination passed. The examinations are to be formulated by a board of examiners, and will be largely objective in form.

Transfer students will have their credits evaluated in terms of courses offered at Michigan State, and will go ahead with their work with no appreciable loss of time. Students with more than one term of college work will continue on the same basis as other upper classmen, and will not be affected by the basic college.

Students in the basic college who do not complete a full year's work, and wish to transfer to another college or university, may transfer one or two terms work without having passed the comprehensive examination given upon completion of three terms of work in the core courses.

Rather is Dean

H. C. Rather, formerly professor and head of the department of farm crops, is the dean of the new basic college. The seven departments or core courses of the basic college and their new deans are: Prof. Paul Bagwell, formerly acting head of the department of speech and dramatics, written and spoken English, and Prof. C. A. Lawson, of the zoology department, biological science.

Others are Prof. W. R. Fee, of the history department, social



H. C. RATHER
... basic college dean ...

science; Dr. L. J. Haak, formerly head of the department of sociology at Tulsa university, Tulsa, Okla., effective living, and H. H. Kimber, acting head of the department of history and political science, history of civilization.

Prof. Ben Euwema, acting head of the English department, will head literature and fine arts. The head of the new department of physical science had not been appointed at the time this paper went to press.

Schools Established

With the addition to the educational system of the basic college, the former divisions were changed to schools and slight changes made in administration. Four divisions went into the school system with little change. They were Home Economics, of which Marie Dye is dean; Engineering, with H. B. Dirks as dean; Agriculture, with E. L. Anthony as dean, and Veterinary

science, of which Ward Giltner is dean.

Changes resulted in the formation of the school of Science and Arts, headed by Dean L. C. Emmons; and the school of Business and Public Service, headed by Col. Dorsey R. Rodney. S. E. Crowe was appointed dean of students, and R. C. Huston will continue as dean of the graduate school.

All New Students To Be Assisted By Counsellors

Getting adjusted to new surroundings and to college life is one of the major problems facing new students. Both students and faculty at Michigan State realize this, and both cooperate in programs designed to help freshmen become oriented as rapidly as possible.

The college conducts separate orientation programs for men and women, and student organizations such as Tower Guard, Mount Board and Student Council assist in various ways during freshman week and in the period following.

Each new student will be assigned to a faculty counsellor, of which there are 17. Each counsellor will have charge of from 70 to 100 new students, and will spend half of his time teaching and half counselling.

In the past an adviser had only a small group of advisers and taught full time in addition. Under the new system, the counsellor is responsible for everything concerning his advisees, and devotes more time to their special problems.

Student who know what their major is to be and who are heading toward a certain course of study, will be assigned to counsellors in that field.

After the new counselling system is well established, a central headquarters with a place for counsellors and students to meet and where records of all students can be kept will be set up. Dr. Paul Dressel is director of counselling for new students.

Board Disciplines Women

Disciplinary board for Spartan women is judiciary board, which operates under the supervision of AWS. All petitions for excuses of late minutes, late permission and special hours are dealt with by the board.

The board is composed of representatives from the cooperative houses, the president of each dormitory and chairman of the off-campus judiciary board.

From President Hannah—

(Continued from Page One)

tion and knowledge, both technical and cultural, that is obtainable.

Members of the class of 1948 are pioneers in a new development in college education. They are the first students in our new Basic College designed to provide all students with two years of broad comprehensive training as a foundation for satisfying, effective lives as American citizens and upon which they may build the specialized skills taught in the upper schools.

Michigan State college is proud of its beautiful campus, of its buildings and equipment, of its able, conscientious and friendly staff. Michigan State students have always been noted for their friendly, democratic spirit. Many nationally and internationally known leaders in many fields of endeavor are numbered among its alumni and former students.

I would remind all students enrolling in college for the first time that what you get from your college experience will be in direct ratio to what you put into it. You have before you a great and challenging opportunity. We are all anxious and willing to help you in every way that we can. We welcome you into membership into our rapidly growing Michigan State college family.

JOHN A. HANNAH.

Mimeograph Office Turns Out Class Papers

After a new student has attended classes for a few weeks, he may begin to wonder where all those sheets of reading references, course outlines, review questions, project instructions, laboratory directions and a number of other things come from.

The answer is the college mime-

ograph department, a small but busy branch of the college located in the basement of the foreign language building.

Headed by Lauren P. Brown, who doubles as assistant track coach, the department turns out everything from examination questions to text books.

FOR MANY YEARS THE NAME

Twichell's

HAS MEANT

EXCELLENT DRY CLEANING

AND

EXPERT TAILORING

FOR MICHIGAN STATE COLLEGE STUDENTS

TWICHELL'S

221 M. A. C.

Phone 8-1812

THE SMOKE SHOP

"Where the Fellows Get Together"

FOR MORE THAN 25 YEARS Charley Washburn's SMOKE SHOP has been the meeting place for M S C men — for tobacco, for recreation and for just plain bull sessions.

YOU'LL LIKE the friendly Spartan Spirit of the SMOKE SHOP. You'll enjoy the billiard tables and the lunch counter. The SMOKE SHOP is one place where you can find nearly anything you need.

TOBACCO — MAGAZINES — PIPES — LIGHT LUNCHES — SCHOOL SUPPLIES
TOILET ARTICLES — LAUNDRY SERVICE

You'll Want to Get into the Smoke
Shop Tradition

Famous Personages Will Be Heard At MSC in 1944-45

College Lecture Series Lists 13 Performers for Season

Headlined by such famous names as Guthrie McClintock, Eliot Janeway, Richard Crooks and Bidu Sayao, Jan Struther, the Minneapolis symphony and the Russian Ballet, the 1944-45 college lecture series will bring 13 numbers to Michigan State.

World Adventure series programs will fill in Saturday evenings when no program is scheduled for the lecture series.

First of the 13 performances will be the opera "La Traviata," to be presented by the Wagner Opera company, Saturday, Oct. 7, in College auditorium. The same group gave a performance of "Faust" at Michigan State last year. The opera features Metropolitan stars and a symphony orchestra.

C. J. Hamber, Norwegian statesman and former president of the league of nations, will give a talk on Thursday, Oct. 12.

To Give Opera

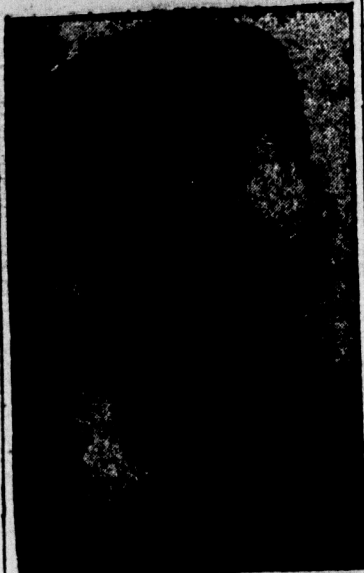
"The Gypsy Baron," which will be sung by the New York Civic Opera company, will be the attraction Tuesday, Oct. 17.

Jan Struther, author of "Mrs. Miniver," is scheduled to speak Friday, Nov. 10, in an appearance she was unable to fill last year as scheduled.

On Wednesday, Nov. 15, Richard Crooks, tenor of the Metropolitan Opera company, and Bidu Sayao, Brazilian Metropolitan soprano, will present a program of music. Ruth Draper will give a series of dramatic monologues Wednesday, Nov. 22.

Russian Ballet Again

One of the most imposing members of the season will be the performance of the Russian



SERGE JAROFF

... cossack leader ...

Ballet to be given Tuesday, Dec. 5 in College auditorium. The ballet has drawn huge crowds each time it has appeared at MSC in the past several years.

Playing a repeat performance at State will be Don Cossack choir, led by Serge Jaroff, conductor. They will appear Saturday, Jan. 13.

Eliot Janeway, editor of Fortune magazine, will discuss problems after the war at a lecture to be held Wednesday, Jan. 24.

Musical Programs

Dimitri Mitropoulos will conduct the Minneapolis symphony in a musical program Monday, Jan. 29, and Guthrie McClintock, producer and husband of Katherine Cornell, will speak Friday, Feb. 2.

On Saturday, Feb. 24, the dancing term of Velez and Yolando and company of 15, will present a program of dancing and music.

A Metropolitan quartet composed of Jarvila Novotna, soprano; Hertha Glaz, contralto; Martial Singher, baritone, and Raoul Jobin, tenor, will sing a number of selections on Thursday, March 8 to round out the year's schedule of 13 programs of varied content.

Lecture Supplement

World Adventure series programs, which will supplement the lecture course for the year, include speakers and travel movies, some of which are shown accompanying a lecture. The World Adventure series programs are all scheduled for Saturday evenings.

First program on the series will be Victor Coty, presenting "America Out of Doors," on Oct. 14, followed by John Bryan, with a lecture on "Chile" Oct. 21. Fredric and Sylvia Christian will present "River of No Return" Oct. 28.

Will Speak on Alaska

November programs will include William Darden, speaking on "Alaska" the fourth, and Burton Holmes, with a lecture on "Colorado" Nov. 25.

On Dec. 9, Joe Fisher, who has made several previous appearances at MSC, will give a talk on "South Africa." Programs for 1945 will start Jan. 6 with Count Byron de Propok speaking on the "French Underground."

Others include Laura Boulton, with a talk on "Canada" Jan. 20 and John Furbay, who will give



DIMITRI MITROPOULOS
... symphony conductor ...

a lecture on Jan. 27 on "Liberia."

Fashion Expert

"Nature" will be Sam Campbell's topic when he appears Feb. 10. Vyvyan Donner, well known fashion expert, will show "Fashions of Mexico" March 31.

Two April programs will complete the year's presentations. Martin Bovey will give "Adventures On and Around Hudson Bay" April 7, followed by a lecture on "Birds" to be given by Cleveland Grant, April 14. Grant has also made several past appearances at the college.

Million Dollar Building

Jenison fieldhouse and gymnasium is one of the largest and best equipped physical education and athletic plants in the country.

Built at a cost of more than a million dollars, it contains a fieldhouse and indoor track which will seat a capacity of 12,000 persons. There are three complete basketball courts in the gymnasium.

Servicemen's Bureau Helps Former Vets

Institute Aids Returned Veterans Adjusting To College Life

War veterans, whether they be former students or new to college, will find both a hearty welcome and a special agency to help them when they return from service and come to Michigan State college for a resumption of their education.

A servicemen's institute whose principal aim and concern is the welfare of former servicemen has been set up on campus this summer. Supervised by Prof. S. E. Crowe, dean of students, the institute is under the direction of Dr. Fred T. Mitchell, counselor for men.

The institute's program is designed to give returning veterans guidance and attention from the time they arrive on campus to such time as they complete their studies and get jobs.

At the end of World War I more than 70 per cent of the veterans who returned to school failed, or left shortly after, mainly because they went right into the degree-granting program without any preparation or mind-refreshing. Little, if anything was done to help them adjust themselves to a civilian-student way of life.

But, now, at Michigan State college, veterans of this war can get a better chance to start over.

See—BUREAU—Page 12

UNION GRILL UNION DESK UNION CAFETERIA

—For Quick Cokes, Lunches,
Special Dates.

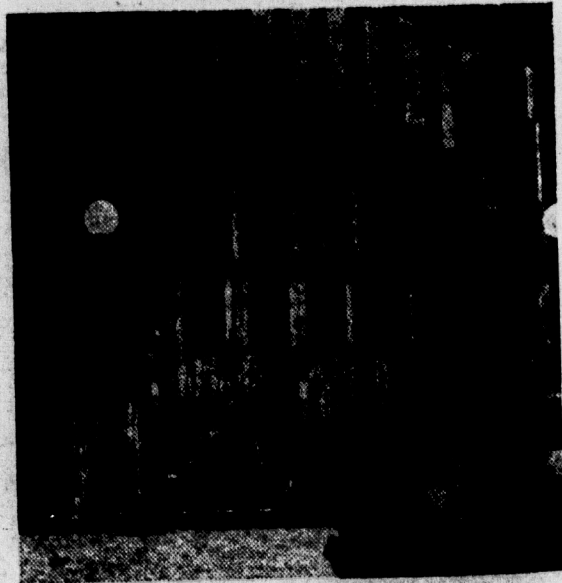
—For School Supplies, Tobacco,
Magazines, Candy

—For Good Food at Reasonable
Prices.

Union Memorial Building — The Most
Popular Spot on Campus

PARENTS and VISITORS

When you visit your son or daughter at Michigan State College you'll find the hotel facilities of the Union at your convenience. Modern, up-to-date hotel rooms at moderate prices—right on the campus.



WHERE SPARTANS MEET

MSC Sororities Will Initiate New Rushing Plan

15 Groups Will Begin Formal Season With Parties Saturday, Sept. 23

Formal sorority rushing at Michigan State will follow a new plan this year with 15 sororities holding introductory parties Saturday, Sunday and Monday, Sept. 23, 24 and 25, to complete stage one of the system.

In order to be considered for formal rushing, women must pay a \$2.50 rushing fee, which may be sent by money order to Mrs. Joseph Gagnier, 604 West Main street, Lansing, Mich. Letters have been sent to all freshmen and transfers explaining rushing and the fee requirement.

A convocation will be held on Thursday, Sept. 21 at 7 p.m., in the music auditorium for all women interested in formal rushing whether freshmen or upperclassmen. Attendance at the convocation will be required, for at that time the schedule for stage one and the PanHellenic handbook will be given each rushee.

Stage One Required

Twenty-five rush parties are planned for the two week rush period beginning with stage one Saturday, Sept. 23. The 15 parties of stage one, attendance at which is required of all women will be held Saturday at 1, 2, 3, 4, 5 and 7 p.m.; Sunday at 8 and 9 a.m. and 2, 3, 4, 5 and 7 p.m., and Monday at 7 and 8 p.m. for 35 minutes each.

Stage one is to serve as an opportunity for each rushee to get better acquainted with every group than has been possible in the past. Each woman who pays the rushing fee will go to the various houses in a group of approximately 30, and will be accompanied by a hostess. Hostesses will be chosen from alumni groups having no chapter on campus, and will merely guide



JEAN McKERRING
... PanHellenic president ...

the groups from house to house. To Have Refreshments

Refreshments will be served at every house at the same hour, once Saturday and once Sunday afternoon, to avoid the possibility of rushees having refreshments several times each day.

Stage two, which begins Tuesday, Sept. 26, will consist of hour parties from 6:45 to 7:45 p.m., Tuesday through Friday, and from 2 to 3 and 4 to 5 Saturday and Sunday. All parties in stage two are invitational, each house issuing invitations to women of its choice.

Pledging Oct. 9

Stage three includes parties on Tuesday and Thursday, Oct. 3 and 5, from 7 to 8:45 p.m. and the preference dinner Friday, Oct. 6, from 6 to 8:30 p.m. Silence period will last from the close of the preference dinner until pledging Monday evening, during which time no sorority members are allowed to speak to any rushees.

Preference lists will be out Saturday and must be returned the day of pledging. Bids will be issued Monday afternoon, Oct. 9, the day of pledging.

Michigan State has 15 sororities, 13 national and two local. Last year two new sororities were installed on campus, Gamma Phi Beta, national, and local Pi Phi Gamma, which expects

to affiliate with Pi Beta Phi this fall. The other local is Epsilon Chi.

Remaining national sororities include Alpha Chi Omega, Alpha Gamma Delta, Alpha Omicron Pi, Alpha Phi, Alpha Xi Delta, Chi Omega, Delta Zeta, Kappa Alpha Theta, Kappa Delta, Kappa Kappa Gamma, Sigma Kappa and Zeta Tau Alpha.

Several groups have moved into vacated fraternity houses for the duration. These include Chi Omega in the Delta Sigma Phi house, Delta Zeta in the Phi Delta Theta house and Kappa Delta in the Alpha Tau Omega house. The Gamma Phi Betas will live in the Psi Upsilon house and the Pi Phi Gammas in the Delta Chi house. Zeta Tau Alphas will live in the Lambda Chi Alpha house.

Music Audition Plan Prepared

New students will have an opportunity to try out for all Michigan State music organizations during freshman week.

Auditions will be held Wednesday, Sept. 20, through Friday, Sept. 22, in the music building. Posters will be up in the dormitories, houses and various campus buildings announcing the time and place for them.

A cappella choir auditions will be heard in room 203 in the music building from 1 to 3 p.m. daily. Auditions for the band, open to both men and women, will be heard in room 118 from 3 to 6 p.m. daily.

Orchestra auditions will be held in room 202 from 1 to 3 p.m. daily and women will have an opportunity to try out for the women's glee club in room 207 from 2 to 5 p.m. daily.

BACK TO SCHOOL AGAIN!

"Back to school" can be a lot less painful if you're wearing clothes which reflect the ultimate in correctness and good taste. At Sam's we specialize in school togs which fit this description to a T. Make Sam's your headquarters for your school apparel.



SPORT COATS

100% Wool

\$11.85

SECOND FLOOR

NEW PLAIDS — NEW CHECKS
NEW NOVELTIES — Sizes 32 to 44.
All the new autumn shades.

NEW SLIP-OVER SWEATERS

New colors in new novelty knits — in all the new solids and fancys, now so popular. V and crew necks.

\$3.85

First Floor

WELCOME— FRESHMEN

We're here to keep you healthy with Scientifically Processed

DAIRY PRODUCTS

MILK — CHEESE — BUTTER

Delivered at Your Door Every Other Day

W. B. GLINES Distributor

of

MSC DAIRY PRODUCTS

JACK CLAUCHERTY, Manager

Call 8-1511 Ext. 559 for Deliveries

SPORT SLACKS

New Tweeds — New Glen Plaid — New Herringbones and Diagonals in all the new Fall patterns.

\$4.98

First Floor



Upperclass Coeds To Be Counsellors

Record Number of 500 Big Sisters to Guide Freshman, Transfer Women Through First Year's Activities at State

Women's guidance activities at Michigan State are centered in the women's counsellor system, traditionally known as the Big Sister program.

In a drive sponsored by the Big Sister council late spring term, a record number of more than 500 upperclass coeds signed up to serve as Big Sisters during the coming year. They will help freshman women become acquainted with Michigan State college.

Counsellors correspond with their little sisters during the summer and are on hand to help them during their first year. In order to establish closer contact between new students and upperclass women, Big Sisters are being assigned by residences.

Town Girls Tea

Activities will get under way during freshman week with get-acquainted programs planned for dormitory, co-op, off-campus and town women.

Tuesday of freshman week, from 4 to 6 p.m. in the Town Girls lounge in the Union building, Town Girls will sponsor a tea for freshmen from Lansing and East Lansing. In the dormitories, Tuesday night upperclass women will entertain the new coeds at an informal get-together from 9:45 to 10:30 to introduce the new women to their neighbors.

Dean's Reception

The annual reception for new students will be held Wednesday, Sept. 20 from 8 to 9:15 p.m. in Williams dormitory, highlighting the program of orientation for women.

Sunday from 8:30 to 9:30 p.m. big and little sisters will meet in College auditorium for a candle lighting ceremony to be known as the First Flicker, because it represents the end of the first stage of college life for the little sisters. Little sisters will be escorted to the affair by their big sisters.

The Big Sister council is made up of representatives from each housing group. Included in this group are cooperative representatives Marion Hadsall, Ruth Smythe and Mary Greene. Town Girls are Lois Banzet, Dorothy Bloomhuff and Virginia Boehler.

Representatives

Off-campus representatives

Barbara Bennett and Donna Meyer.

West Mayo representatives are Emily Noll and Frances Joyner; East Mayo, Joyce Duttweiler and Marcella Gast; North Campbell, Lois Robinson and Betty Satterley, and South Campbell, Betty Bolander and Lynn Kelly.

Co-chairmen of the Big Sister council are Pat Fisher, Evanston, Ill., senior, and Dorothy Englehardt, Lansing junior. Jean Zook, Hamburg, N. Y., junior, is secretary of the council.

Band to Present Three Concerts

The MSC band, under the direction of Leonard Falcone, will give three band concerts during the coming year, one each term, it was announced this week by Roy Underwood, head of the music department.

Lack of bass players makes it impossible for the band to pre-

sent pop concerts this year, which proved so popular when started two years ago.

All new students with two or more years of experience in high school bands are urged to bring their instruments to college with them and try out for the MSC band.

Last year, for the first time, women played in the college band. Auditions for the band will be held in room 118 in the music building, from 3 to 6 p.m. Wednesday, Sept. 20, through Friday, Sept. 22 of freshman week.

START PLANNING FOR COLLEGE

Bright Wool SWEATERS

3.95 to 8.95

CAMPUS HONOR ROLL

From California

CARDIGAN COMBINE. Casual hound's tooth check cardigan jacket with deep patch pockets 17.95

Smart pleated skirt, strictly tailored the sport shop way 7.95

OTHER JACKETS from 7.95 up

OTHER SKIRTS from 5.95 up

B

HARLEQUIN DRESS of supple wool jersey in jet black with rose or lime, also beige with brown, beige with purple 21.95

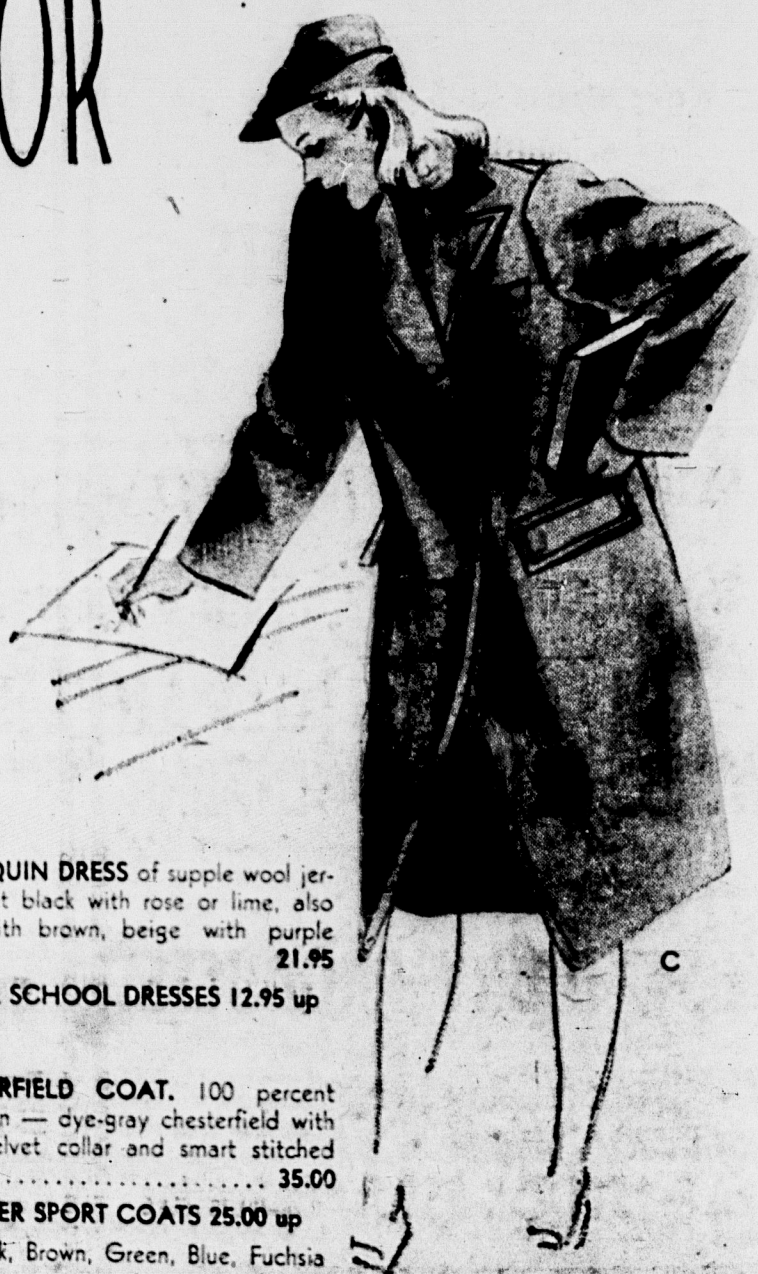
OTHER SCHOOL DRESSES 12.95 up

C

CHESTERFIELD COAT. 100 percent wool yarn — dye-gray chesterfield with rayon velvet collar and smart stitched lapels 35.00

OTHER SPORT COATS 25.00 up

In Black, Brown, Green, Blue, Fuchsia



Visit our store for everything in music.

See our sheet music and record department for both popular and classical music.

Budd's Music House

"Everything In Music"

318 S. Wash. Ave.
Phone 4-6515

Saturday, Sept...

Women Save Pa Shopping

The fall of fighting and lege wardrobe to save in o So let's lo step in you and sweaters material th

Sweaters a

The styles h anything. T threatening to may be just mired and se

Number one is skirts and straight skirt, economic savi for every figu They can be

Heavy lin for Michig very much will be a w good thing

Suits Are

The top of with kerchie flap beanie chief or bean silver barrette

A smart w maker suit, on quota of war wardrobe. W trip home, or

Informal "special occ dines would some time s ner dress i definitely a color to ha

Jumpers

On Sunday you will be r so pick it ou serviceable b or one of the ing furs — t

Fitted cloth popular with much depend

The new c ality and va

Slacks an the wintry

W

Wo

C

Bib

Thursd

"

S

WOMEN'S FASHION NOTES

Women Have Stock Style Trends at MSC Save Part of Your Clothing Budget to Spend in College Shopping Area to Take Advantage of Spartan Fashions

By MAY ANN MAJOR, Women's Editor

The fall of 1944 brings us closer to the end of World War II, but we are still fighting and that will make a difference as we pack our bags for school. The college wardrobe of one coed seems like a minute matter, but it is one way we can help to save in order to hurry the victory.

So let's look back over the high school wardrobe. Although college will be a new step in your life it does not necessarily mean a complete turnover in clothes. Skirts and sweaters, especially if they are pre-war models, will be better made and of better material than recent ones.

Sweaters and Skirts Tops

The styles have not changed enough to discard anything. That sloppy sweater you have been threatening to throw away for the last two years may be just the shade your roommate has admired and searched for.

Number one on the dress parade at any college is skirts and sweaters. The newest style is the straight skirt, which is popular because of the economic saving in material. But there is a style for every figure and that's important.

They can be pleated, gored, circular, or peasant

in plaids, checks and tweed. Material too, is difficult to get, but wools, gabardines and corduroys are always popular.

Sweaters range in all colors, both pastels and brights, and are still worn as large as the OPA permits. A little larger if you knit them yourself, we might add.

The starched white Peter Pan or pointed dickie is the touch that refreshes. Gay Norwegian sweaters and argyles are always welcome items and seem to be successful in keeping out the strong winds prevalent on Michigan State's campus.

Heavy-lined coats — the polo coat, boxy tweed and reversible raincoat are perfect for Michigan's changeable weather. The fur lined coat, a big hit last year, is still very much in the running, with the sailor's pea coat only a length behind. There will be a warm month or so before snow flies so the snap-in lining is definitely a good thing to consider.

Suits Are Suitable

The top of the head must be kept intact too, with kerchiefs (the brighter the better) and ear flap beanies doing the trick. Under that kerchief or beanie is an initialed or name engraved silver barrette keeping the hair in place.

A smart wool suit or a smooth fitting dress-maker suit, or both if you have bought over your quota of war bonds, is the basis of a good college wardrobe. Whether for weekends at college, a trip home, or better yet, to visit the fellow who

receives the letters, a suit is always right.

Shoes are our biggest problem because of the ration must. Moccasins, stadium boots, saddle shoes and sneakers get a workout and you can't have too many. So bring all you have accumulated during high school and don't forget a pair of warm slippers for nights when the lights burn late. Three pairs of dress shoes are the maximum. There will still be dates, church and teas, but three pairs should fill every need.

Informal parties have become more the thing since the war, so one dress marked "special occasion only" will suffice while two or three soft wools or tailored gabardines would be wise. Fraternity and sorority strictly formals have been missed for some time so the low backed dress and sequins is that much extra baggage. The dinner dress is the most practical and most apt to be worn. The wrap to go with it is definitely a luxury, but if you're buying one make it floor length wool in a gay color to harmonize with your dresses.

Jumpers Take Spotlight

On Sunday morning and at the rushing parties you will be mighty conscious of your dress coat so pick it out carefully. If fur it is, make it serviceable by getting muskrat, mouton, raccoon or one of the other not too expensive, long wearing furs — the kind papa likes.

Fitted cloth coats, fur trimmed or plain, are popular with smart Spartan women, but again much depends on the figure to be fitted.

The new catch hit is the jumper. It's practicality and variability has made its place in the

race. Three of the best known styles are the lumber jack jumper, which is cut for comfort; the drawstring jumper, worn over your shirts and sweaters in any solid color, and the crisscross jumper, usually plaid with a pancho effect top and a kilt skirt, to give the finishing touch to any dream wardrobe.

Now you are wondering about hats. The style is to be light lidded so bring a tam for the sport date and an off the face felt to be sure. Small hats and half hats are still high in popularity, especially among State coeds.

Slacks are still on the "handle with care" list. Discretion must be used, but the wintry blizzards and snow banks make their usefulness noted. Shop for a

Sep—FASHIONS—Page 19

Local Mailmen Have Busy Time

More than 8,000 letters and postcards on a day's average handled by the East Lansing postoffice during the school year, give evidence that Michigan State students do not entirely neglect the folks at home or men in service during the rush of school activities.

Business for East Lansing postmen has increased proportionately with Michigan State's enrollment for the past decade

until fiscal statements total around a \$70,000 volume in a year's time.

Sixteen regular employees are under the supervision of acting postmaster Leo Francisco, who sees that letters are kept in proper channels going from mothers to sons or sons to sweethearts.

Incorrectly addressed mail both from the students and parents, is the postman's biggest problem.



Church Directory

FIRST CHURCH OF CHRIST, SCIENTIST

EAST LANSING MASONIC TEMPLE

314 M. A. C. AVENUE

Sunday School 9:30 a. m. Sunday Service 11 a. m.
Reading room and lending library, 211 Abbot building,
open daily 1-4:30 p. m. and Sundays 3-6 p. m.

PEOPLES CHURCH

Interdenominational

Junction of Michigan and Grand River Avenues, East Lansing

9:30 and 11 a. m. Worship Services

NEWELL A. McCUNE, Preaching

STUDENT CHRISTIAN UNION FOR COLLEGE MEN AND WOMEN

5:30—"Hand Shakes and Hand Outs"

6:15—"Slow, Crossroad Ahead"

Student Parlors, Second Floor

LUTHERAN STUDENTS

WELCOME TO

CHRIST LUTHERAN CHURCH

(Missouri Synod)

122 So. Penna. Ave., near 1000 E. Michigan

E. L. WOLDT, Synod's Student Pastor

MORNING WORSHIP 10:45

Communion on 4th Sunday

GAMMA DELTA — A Lutheran Fraternity for Synodical Conference Students meets at the Union on 2nd and 4th Sunday at 7 p. m.

ST. THOMAS AQUINAS CATHOLIC CHURCH

405 Abbott Rd.

SUNDAY MASSES
8, 10, 12 a. m.

HOLY COMMUNION
7, 7:30, 7:45, 8 a. m.

WEEKDAY MASS
7 a. m.

CONFESSIONS
Saturday, 4-5:30 p. m.
7:30-9 p. m.

MIRACULOUS MEDAL DEVOTIONS
Monday, 7:30 p. m.

Before Sunday and Weekday Masses
5:15 p. m. daily

ROSARY NOVEN DAILY 5:15 p. m. Daily

NEWMAN CLUB 2:30 p. m. Sunday
Religious, Social, Cultural

Newman Club Mixer — 8-9:15 p. m., Thursday, Sept. 21
Little Theater, Home Ec Building

Rev. Jerome V. MacEachin, M. A., Pastor
Rev. Michael J. Mleko, J.C.L., Assistant
Residence 601 Abbott Rd. Phone 8-3736

WELCOME FRESHMEN!—

Worship on Sunday Brings a Blessed Monday COLLEGE LUTHERAN CHURCH

EAST LANSING

extends you a cordial invitation
To make this your CHURCH HOME

Bible Study 10:00 A. M.

Worship Service 10:30 A. M.

Lutheran Student Club 7:00 P. M.

Thursday, Sept. 21, Freshman Week, GET ACQUAINTED meeting, Organization Rooms, Third Floor, Union, 8:15 P. M.

"EVERYBODY In Church Sunday", September 24th

Sermon Theme: THE ROYAL ROAD TO KNOWLEDGE

(Services in the East Lansing State Theater, 215 Abbott Rd.)

WILLIAM YOUNG, M. A., B. D., Pastor

If It's Typically Campus,

It's Typically JACOBSON'S

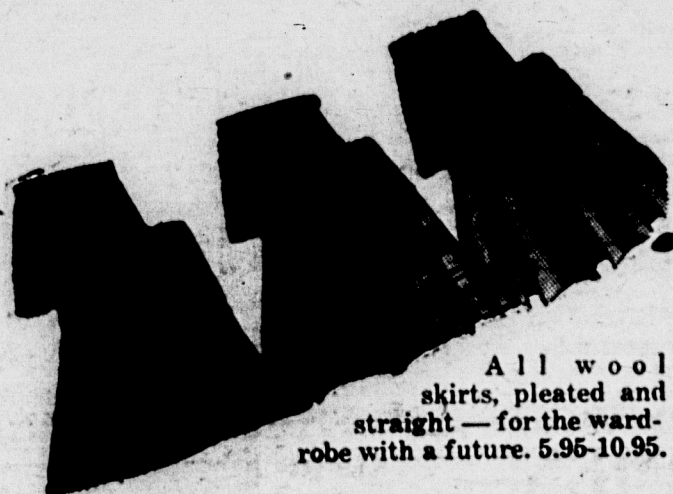
Jake's is THE store in town for those luscious sweaters, smooth slacks, perfectly tailored suits and coats — for your bestest dress-up clothes and the most comfortable of sleeping togs.

And don't forget sox, cosmetics, handbags, gloves, and hats . . . all MUSTS in your collegiate wardrobe.



Tailored as beautifully as those of the boys in uniform . . . wool slacks from 7.95.

Knubby knits, soft cashmeres, your favorite slippers and cardigans in the newest of fall hues and the best in classic colors. 3.95 — 14.95.



All wool skirts, pleated and straight — for the wardrobe with a future. 5.95-10.95.

And come here for your formals, too. You can always find it at Jacobson's.

Jacobson's—

Open Thursday evenings until 9



Just what the old suit needed — a fresh new blouse of white or colors. Every style, every size starting at 2.00.



VOL. 332.334

State

Freshman

(Freshman women Thursday and by TUESDAY, SE

Tea for new Union bu Informal Ge Women women st Faculty Fires by YMCA Informal Ge 10:30 p.m.

WEDNESDAY

YMCA supper church, 8 Michigan Sta interested Reception for of basic sellers, 1 students

THURSDAY,

Society rush (For all fee)

Student club Student

Canterbury c Road, Fo

Christian Se auditorium

Hillel found students

Lutheran stu 2, third

Newman club building

Spartan Chr third floor

FRIDAY, SEE

Freshman al room, for

Entertainment can mus

SATURDAY,

All-college d upon pre

SUNDAY, SEE

The First F upperclass requested

*Men and women this event.

Student

Each fall a the carefree, g istic of the f thinking that their hidden t The typical a world."

It isn't long of college is n incoherently p to it than jus them become

They feel th studying wha here for; tha instructors an that you can't time and stud

This happer everyone at som in his college that way, and others in my c the first term have a differ

We could business of g cation is a lon that many of once consider weren't so bac found that v time to enjoy our studies c came to Mich

The same t freshmen thi year. Going t students with fident that th ind, as every not only a h is the best sch

State News Receives Daily A P News Coverage

Freshman Week Social Calendar

(Freshman women must be in their residence by 9:30 p.m. Tuesday through Thursday and by 12:30 a.m. Friday and Saturday of Orientation week.)

TUESDAY, SEPT. 19

Tea for new town girls, 4 to 6 p.m.—Town Girl's room (fourth floor Union building)

Informal Get-Together in each of the women's dormitories — 9:45

Women's parlors, Peoples church, sponsored by YMCA (New women students may come at any time during this interval)

Faculty Fireside for men, 7:30 to 9:30 p.m.—Peoples church, sponsored by YMCA.

Informal Get-Together in each of the women's dormitories—9:45-10:30 p.m.

WEDNESDAY, SEPT. 20

YMCA supper for men, 6 to 7:30 p.m.—Faculty dining room, Peoples church. Sponsored by YMCA.

Michigan State Interfraternity council smoker for all new men students interested in fraternities—Union ballroom, 8 p.m.

Reception for freshman women given by the dean of students, the dean of basic college, the counsellor for women and the upperclass counsellors, 8 to 9:15 p.m.—Informal, Williams dormitory. (Women students may come at any time during this interval)

THURSDAY, SEPT. 21

Society rushing and membership explained, 7 to 8 p.m. Music auditorium. (For all women students who have paid \$2.50 PanHellenic rushing fee)

Student club party, 8 to 9:15 p.m.—Peoples church, sponsored by the Student club and the Student Christian Union.

Canterbury club party, 8 to 9:15 p.m. — Canterbury house, 445 Abbott Road. For Episcopalians and friends.

Christian Science organization meeting, 8 to 9:15 p.m.—206 music auditorium. All Christian Science students invited.

Hillel foundation, to 9:15 p.m.—Spartan room, Union. All Jewish students invited.

Lutheran student club party, 8 to 9:15 p.m.—Organization rooms 1 and 2, third floor of Union. All Lutherans invited.

Newman club mixer, 8 to 9:15 p.m.—Little Theater, Home Economics building. All Catholic students are invited.

Spartan Christian Fellowship, 8 to 9:15 p.m.—Faculty dining room, third floor of Union

FRIDAY, SEPT. 22

Freshman alumni scholarship group meeting, 7 to 8 p.m.—Spartan room, fourth floor of Union

Entertainment, 8 p.m.—College auditorium. The "Osta's"—South American music and dancing team.

SATURDAY, SEPT. 23

All-college dance, 9 to 12 p.m.—College auditorium. Open to students upon presentation of identification card and to men in uniform.

SUNDAY, SEPT. 24

The First Flicker, 8:30 to 9:15 p.m.—College auditorium. Given by upperclass counsellors for freshman women. Counsellor sisters are requested to bring their Little Sisters.

*Men and women students may come singly, by couples, or in groups to this event.

Three Will Head 1944-45 Paper



PEG MIDDLEMISS
... manager ...



BARBARA DENNISON
... editor ...



BARBARA FEARNSIDE
... ad manager ...

College Paper Enters Third Year of Daily Publication

Varied Services Give Michigan State News High Ranking Among College Newspapers

The Michigan State News, college student newspaper, will resume its third year of daily publication on Tuesday, Sept. 26, and will continue to bring college students up-to-the-minute news of the campus and the world.

State News Lends Opportunity for Work and Fun

The end of the second year of the Michigan State News as a daily paper climaxes a period of 63 years during which the college student publication grew from an unpredictable bi-weekly to its present status.

Appearing every morning except Sunday and Monday, the Michigan State News will bring to the student body all the latest happenings both from the campus and the world news fronts.

The organization which makes this possible is entirely student manned and controlled. Heading the organization are the editor and manager who direct the work of the editorial and business departments respectively. An advertising manager handles all advertising ventures for the paper.

Thus, two avenues of advancement are open to the student who wants a taste of real newspaper life. There is the editorial side of the paper, reporting, writing, rewriting and general handling of the actual news content of the paper.

The other is the advertising end, providing experience in writing and selling ads, handling billing and collections, circulation and other business angles of the paper.

Many positions will be open to freshmen, both men and women, this year, in each department. For those who keep at it and make good, high salaried positions are at the top of the heap in junior and senior years.

For the last 10 years the Michigan State News has been rated among the 10 best college newspapers in the nation. And at the present time many of its former editors, reporters and business managers blanket the state and country as successful newspaper and advertising employees and executives.

All of which goes to prove the Michigan State News is good hard work when there's work to be done and lots of fun when the work's all done, as the saying goes.

For the benefit of enterprising freshmen, both men and women, the State News office is located in the Union annex, room 8. Editor of the paper is Barbara Dennison, East Lansing senior; manager is Peg Middlemiss, Detroit senior, and advertising manager is Barbara Fearnside, St. Clair Shores junior.

Parking Regulations to Remain the Same

Student and faculty parking rules for the regular school year will be the same as in past years, according to the campus police.

All student cars must be registered with the campus police. Students who drive cars on campus are to use the parking lots north of the stadium, north of the tennis courts and south of the Veterinary clinic at all times.

Election to membership in Associated Press two years ago enabled the Michigan State News to receive complete world-wide news coverage by a direct wire, and prompt news picture service.

World's Largest Agency

Membership in AP, which is the world's largest news gathering agency places the State News on an equal footing with the nation's topflight collegiate publications.

The first daily publication of the Michigan State News this fall will be the morning of Tuesday, Sept. 26. The paper is delivered by carriers to all students living in campus dormitories, sorority houses and residential houses within the city limits of East Lansing. Students who commute from Lansing, East Lansing rural areas and other towns in the vicinity may pick up their daily paper at the Union desk.

Indicate your local address plainly or your intention to pick up your copy at the Union desk on the Michigan State News delivery card at the time of registration.

Besides the 1,400 commercial members of AP, other select college members include Michigan, Wisconsin, Ohio State and Dartmouth.

60 Words Per Minute

The teletype machines, which will pound out the news from all parts of the world at the rate of 60 words per minute, are installed in the State News office in the Union annex.

Unlike many other college newspapers which have become wartime casualties, the Michigan State News will continue in operation in full force this year, working for the second consecutive year with women in charge and a staff composed almost entirely of coeds.

Social Committee Directs Parties

Social affairs at Michigan State are centered in the college social committee, composed of four faculty and four student members appointed by Pres. John A. Hannah.

The committee acts as a traffic committee and does not sponsor any social functions itself. Its purpose is to make certain that several organizations giving parties do not plan them to conflict with one another.

An organization's finances and other factors are figured before it is allowed to sponsor a party. If an all-college party is planned for a certain night, all other groups wanting to sponsor a dance that night are automatically postponed until some less conflicting night.

Student representatives of Interfraternity council, PanHellenic council, Associated Women Students and Student council work with representatives of the counsellor for women's and counsellor for men's offices, and one faculty member, with the entire committee headed by Prof. Tom King, of the placement office.

Student Council Message

Each fall a new class enters college, and with it comes the carefree, gay and enthusiastic air which is characteristic of the freshmen. Many of them come to college thinking that they are going to show the world all of their hidden talents in about the first month of school. The typical attitude is . . . "the class of '48 against the world."

It isn't long before they realize that their conception of college is nothing more than a collection of half truths incoherently put together. They learn that there is more to it than just one happy merry-go-round, and many of them become discouraged.

They feel that they aren't studying what they came here for; that some of the instructors are unfair, and that you can't have a good time and study too.

This happens to most everyone at some time or other in his college career. I felt that way, and so did a lot of others in my class. But after the first term we seemed to have a different attitude.

We could see that this business of getting an education is a long time process, that many of the courses we once considered worthless weren't so bad after all. We found that we had more time to enjoy ourselves, that our studies came easier and that we were darn glad we came to Michigan State.

The same thing is going to happen to many of the freshmen this year, perhaps more than any previous year. Going to school in times like these confronts the students with many additional problems. But I am confident that the members of the class of '48 are going to find, as every class before them has, that Michigan State is not only a beautiful school with a friendly attitude, but the best school in the country for them.



JIM BIBBINS
... council president ...

JIM BIBBINS,
Student Council President.

Wanted

Freshmen students to carry Michigan State News routes before 8 a. m. every morning except Sunday and Monday. Write Jane Walker, circulation manager, 25 Leander Road, Rochester, N. Y., before Sept. 16.

Topflight Musical Artists Will Perform Here in 1944-45

Violist, Violinist, Cellist and Quartet to Highlight Series

Budapest Quartet to Play Repeat Program

In a series of four and possibly five concerts scheduled for 1944-45, outstanding musical artists will appear in the music auditorium for a newly planned concert series.

Distinctly separate from the college lecture series, the programs will be presented mainly for the enjoyment of music students and faculty especially interested in fine music.

Musical programs of greater public appeal have been included in the college lecture series and are open to the public in College auditorium.

First of the four selections given on the music series will be William Primrose, noted viola player, who will appear Nov. 1. Born in Glasgow, Scotland, Primrose first showed an interest in his father's violin at the age of four and made his first public appearance at the age of 10.

Played In Africa

He studied violin at the Guildhall school and made his London debut in 1923, with the Royal Albert hall orchestra under Landon Ronald. His main interest was in the viola, however, and with his father's cherished Amati instrument, he studied under Eugene Ysaie in Belgium.

Primrose later gave concerts in Kenya and Uganda in Africa and upon his return to England received an offer to play with the London String Quartet, then in the United States. He accepted and remained with the group from 1930 to 1935, touring through South America, Europe and the United States.

His real debut as a solo violist came when he appeared in London under Sir Thomas Beecham in the Handel Viola Concerto. Primrose's ambition to play under Toscanini was fulfilled in 1937 when the new NBC symphony was being formed in New York for Toscanini. Primrose was chosen chief viola player.

In 1942 he began his present solo concert work in pursuit of a new musical career.

String Quartet Listed

The world famous Budapest string quartet will begin winter term for the series on Jan. 17 playing a repeat performance by public demand. Composed of two violins, a viola, and a cello, the quartet is one of the best known in musical circles.

Violinists Josef Reisman and Alexander Schneider, cellist Mischa Schneider and viola player Boris Kroyt will appear in the program.



STRING QUARTET

Woman Violinist

Erica Morini, famous violinist, who will play at State Feb. 20, is the heroine of many tonal achievements in this country and abroad. Besides her many appearances in America and Europe, she has also played in Australia and the Orient.

Miss Morini began her musical career at the age eight, playing as soloist under Arthur Nikisch in Leipzig. She has been studying since she was four and before her eighth birthday had completed the master course at the Vienna conservatory under Anton Sevcik.

In her late teens she came to the United States where she was introduced as soloist with a symphony orchestra conducted by Arthur Bodanzky.

Beethoven Expert

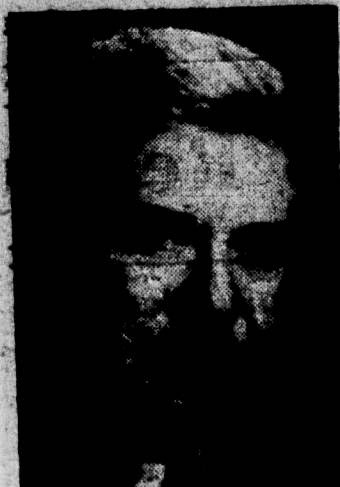
Last scheduled number on the music course will be Arthur Schnabel who will appear on April 7. Schnabel, one of the major pianists of the time and an authority on the music of Beethoven, was born in Lipnik, Austria.

After six years of study with Leschetizky, Schnabel began his concert career with tours through all of Europe. He appeared as soloist with the famous European orchestras mainly in concertos by Mozart, Beethoven and Brahms.

In 1930 Koussevitzky invited Schnabel to participate in a festival of prominent musicians with the Boston symphony orchestra. In 1935 Schnabel gave a cycle of all the Beethoven piano sonatas in Carnegie hall.

Teacher and Composer

He has achieved a world reputation as a teacher of piano and composer of a piano concerto, chamber music works, works for the piano and violin, and some songs. In 1926 he abandoned the piano to conduct several German orchestras, and again in 1932 he



ARTHUR SCHNABEL

turned temporarily to motion picture directing.

A probable fifth presentation of the music series programs will be John Jacob Niles, folk singer, although no definite date has been established as yet for his appearance.

Season Tickets Only

Niles makes his own lute and other instruments, and sings folk songs of various regions. Last winter his activities were illustrated in Life magazine.

Season tickets for the music series will be on sale after Oct. 1. All seats will be reserved by purchase of season tickets and no single admissions will be sold.

All music majors will be given season tickets upon payment of tax only. All other students of the college may purchase tickets at regular prices.

ALL-AROUND-THE-TOWN-AND-CAMPUS

Ken Whitmore
TAILOR

BY

Ken Whitmore
TAILOR

There's nothing like a Ken Whitmore all-wool classic to keep you snug come wind, come rain ... to glamorize you with vivid color or jet black ... to fit and flatter. You'll love the lustrous Skinner's rayon lining with its glove pocket, slick piping, toss-on straps. For your all-around coat, come in and see our handsome Ken Whitmores, today. Sizes 9 to 17

29.95

MILLS

DeCamp's
EAST LANSING
MICHIGAN

PRESENTS

Moccasounds

\$5.95



COBBLERS

Made in California

We also feature BASS Weathers, DANIEL GREEN Outdoorables, SIMPLEX Co-Ede, Girl Scouts.

"Serving State Students Since 1927"

Music Organizations Put Out Welcome Mat For Freshmen

Band, Orchestra, Glee Club Opened to New Students

Groups Participate in Concerts, Programs

Whether a flute player, or an aspiring manager, there is just such a place for students in one of Michigan State's several musical organizations, which include several hundred members in all.

Musical groups which anyone can try out for include women's glee club, a cappella choir, band and orchestra. Activities of these groups are centered in the music building, one of the newest on campus, which has sound proof practice rooms and an echoless auditorium.

Women's glee club last year was made up of 96 coeds under the direction of Dr. William Sur, who came to State last year from the University of Wisconsin.

Members are chosen on the basis of their musical ability, voice quality and blending possibilities after tryouts the first week of fall term. The club expects to give several regular programs over WKAR, college radio station, this year.

Michigan State's 100 piece marching band is a thing of the past but there is still a band and many women have places in it. No longer a marching unit, the band nevertheless expects to have a group large enough to play in the stands at the football games this fall.

There will be positions for many women in the band this year in addition to those already playing in it. Those who have had experience in high school bands are urged to bring their instruments and try out. Leonard Falcone is the director of the MSC band.

40 In A Cappella Choir

Secular and sacred music is the forte of the a cappella choir, which numbers about 40 members. Under the leadership of William Kimmel, the black-robed group sings a series of radio broadcasts over WKAR each year.

Formerly the largest musical organization on the campus, the mixed chorus will not function this year for lack of male voices. If sufficient men should show an interest, however, its activity would be resumed.

If such a group is organized, it too would be under the direction of Kimmel.

The college symphony orchestra, numbering about 50 students presents some of the finest music of any campus organization. Under the direction of Prof. Alexander Schuster, the group gives a number of concerts each year.

Outside trips and out of town concerts put on by the various campus musical groups, will be out of the picture this year as a result of difficulties with traveling accommodations.



ROY UNDERWOOD

Spartan Women Relieve Shortage of B and G Men

One CDC project that has gained considerable recognition as a service unit is the SWAVE program for Spartan women. Organized spring term 1943, it has as its main object, the maintenance of the appearance of the campus.

The SWAVEs work for the building and grounds department. They volunteer their services to do such work as cutting grass, sweeping sidewalks and raking leaves.

SWAVEs Clean Office

They also work inside cleaning classrooms and offices, filing papers and bulletins and other such tasks.

The project was originally organized to aid in the man-power shortage in the buildings and grounds department and it has been met with enthusiasm by Spartan women and the B and G department.

Open to Freshmen

In commenting on the work, women say that it provides exercise besides giving an opportunity to be of service to the college.

The activity will be open to all women who are interested and an opportunity will be given to sign up for the work during regular registration.

College Radio Station Serves Michigan

WKAR Provides Informational, Educational Programs

Michigan State's radio station, WKAR, which is one of the most powerful stations in the state, is a source of entertainment and education to students and non-students alike.

As well equipped as any station in the United States, WKAR is located in College auditorium, where its facilities include three studios, three offices, a transcription room and a room for continuity writers.

Interlocking control panels of the latest design and huge glass windows enable programs to be presented simultaneously or continuously from all of the three sound-proof studios.

Has 5,000 Watts

WKAR's federal authorized output of 5,000 watts is surpassed by only one other station in Michigan. Equipment for the studios includes two pianos for concert work and a special transcription file. Four turn tables for playing 10,000 musical records owned by the station, are also housed in the studios.

Main studios are housed on the third floor of the auditorium with a few offices on the fourth floor. In addition to these facilities, the studio has direct lines to many campus buildings where programs may be held.

Student Help

Thus groups too large for the studio may be put on the air from such places as the Union, fieldhouse, music building, Home Economics building or auditorium stage.

Twelve students are employed part time by the station for work on the programs. Six are announcers, two continuity writers and four student operators.

Station manager is R. J. Coleman, N. T. Grover is chief engineer, program supervisor is Larry Frymire and chief of continuity is Kenneth Richards, formerly of the college speech department.

870 Kilocycles

Operating daylight hours on a frequency of 870 kilocycles, WKAR provides a direct connection between the college, students and parents.

WKAR is the only station in Michigan operating on public funds with two main purposes of providing informational and educational material available

Michigan Education Association, Grange, Farm Bureau, and others.

Student programs comprise a large part of the station's programs. Discussions, dramatic skits, children's programs and musical programs give 50 to 60 students opportunity to broadcast each week in addition to the student announcers.

WKAR is a non-commercial station, having no sponsor, and allowing no advertising to be broadcast.

FOR THE BEST IN —

SCHOOL SUPPLIES

COSMETICS and TOILETRIES

STATIONERY

FOUNTAIN SERVICE

PRESCRIPTIONS

STOP AT

COLLEGE DRUG STORES

111 East Grand River — 116 West Grand River

At the TOP of the hill

YOUR FRIENDLY GROCER

Top Off a Busy Day By Shopping Leisurely at

LEE'S MARKET

Here you will find the finest selection of quality groceries and meats.

OPEN for your CONVENIENCE from
9 A. M. to 6 P. M.

FRIDAY AND SATURDAY UNTIL 8 P. M.

519 WEST GRAND RIVER
Lee Guernsey — Owner

Make **FREEMAN'S**



Your Beauty Center
During Your
College Career

Where Quality of
Work and Service
Blend to Give You
Perfect Results

211 MAC

Phone 8-3539



Freshmen

Welcome to

M S C

and

Reid's

The Friendly Spirit of State's Campus Holds True
in our Flower Shop. Drop in and see us when
you arrive in East Lansing.

Reid's

For Flowers

REID MILLIGAN, Manager

128 W. Grand River

Phone 8-3551

Changes Made in Women's Hour, Ration Systems

Rising Hour Will Be Enforced; AWS to Decide Best Study Plan

Time ration stamps, a wartime innovation added to women's rules last year, will be continued for women living in campus residences again this year, Jane Cumming, AWS president, has announced.

Slight changes have been made in the number and use of stamps, but they are essentially the same. Rising and retiring hours for women, which were enforced at 11:30 p.m. and 7:30 a.m. last year, have also undergone a change.

Ration books will include two A coupons, which are to be used for one night away from the coed's college residence during the week, and are to be used at the discretion of the student, providing arrangements are made with the housemother in advance. Friday, Saturday and Sunday nights are ration free.

Two C's, Six D's
Two C coupons are also being provided and are good for one complete trip of any duration away from college during the week, involving overnights. These may also be used at the student's discretion with proper arrangements completed in advance with the housemother.

Each D coupon, of which there are six, is good for one and one half hours extension of time beyond week night hours. They cannot be used Friday or Saturday nights and only one D coupon may be used any one night.

Overnights Allowed
Each student is allowed either one overnight in Lansing or East Lansing, or two overnights in another college residence. For the former, an A coupon is required during the week, but no coupon is required for a week night in another campus residence.

Freshman hours after freshman week are 9 p.m. weeknights and 9:30 p.m. Sundays. Upperclassmen have until 10 week nights and 10:30 p.m. Sundays. Weekend hours are 12:30 a. m. both Friday and Saturday, except winter term when Friday hours will be 1 a.m.

The 7:30 a.m. rising hour which was instituted last year has been abolished but the 11:30 retiring hour will continue in force with certain modifications. For the first six weeks of the term lights must be out at 11:30 p.m., Sunday through Thursday.

AWS To Vote
Special study rooms in each college residence will be kept open for study beyond 11:30 and may be used with special permission. In houses having sleeping quarters separate from



JANE CUMMING
... AWS president ...

study rooms, coeds will be allowed to study in their rooms after 11:30 with special permission.

For the last six weeks of fall term, those wishing to study after 11:30 p.m. may do so in their rooms providing both roommates want to study. If only one wishes to study she must use the study room provided.

At the end of fall term AWS council will vote on which of the two systems used during the term in to continue in effect winter and spring terms.

INSTITUTE

(Continued from Page 3)

Admission to college will be a joint decision, with the registrar and the institute getting together to decide each case on its own merits.

After admission, tests will be given to determine the individual's background and indicate what preparations and refresher courses are needed before he starts in on college-level work.

Past experiences, army training, and courses taken in various army programs and through

the armed forces institute will all be evaluated for college credit. Individual treatment is the keynote of the servicemen's institute. Each veteran will have

Mitchell as his faculty counselor to advise and assist him in straightening out his curricular problems and making special arrangements with members of the various departments of the

college for tutoring, if needed. Mitchell will also aid the men in registering and classifying at the beginning of a term of study; and will supply them with general educational information.

FOR YOUR FIRST "TURN"

ABOUT THE CAMPUS



tailored by Hart Schaffner & Marx

A fellow simply can't be a "sad apple" in these smart rough fabric suits and sport coats by Hart Schaffner & Marx. They're styled the way the fellows like 'em ... in fabrics and colors that are right on the beam. Approved, too, by the slick chicks ... and that's very important!

Suits from \$45

Sport Coats from \$18.50

Make Small's your headquarters
When you are in Lansing

SMALL'S

211 SO WASHINGTON AVE.

"Always a Good Show — Often a Great One"



THEATRE

EAST LANSING

When you are in need of relaxation — Your friendly State theatre is just the place to patronize. The latest in cinema entertainment, presented in beautiful surroundings. Follow the crowd to the State Theatre.

BUY BONDS and STAMPS at Our Box Office—

Buy More Than Before

Dramatics Play Important Role at MSC

'Tomorrow The World,' 'The Damask Cheek,' 'Blythe Spirit,' Picked As Student Term Productions for 1944-45 Dramatic Season

Dramatics at Michigan State range from the amateur to the near professional and include everything from a short one-act production of Studio Theater to a long three-act presentation once each term during the year.

Plans for the coming year

are well under way and there will be no duration-holiday for dramatics at State. Don Buell, director of the term plays and professor of speech and dramatics, believes in the adage, "The play must go on," and it will.

Training spot for larger productions such as term plays, is Studio Theater. Under the direc-

tion of a graduate instructor in speech, the theater will continue its activities as usual.

Many Roles For Women

More spots than ever are open to women to play roles in Studio Theater short plays. The group meets once every two weeks to work on its productions, many of which are taken out to various spots for entertainment.

Freshmen are urged to partici-

pate in this organization's activities if they aspire to play leading roles in major productions later on. Faculty members thus get the opportunity to become acquainted with the interested persons and learn their abilities as well as to make suggestions for improvement while still in the beginning stage.

Major dramatic productions of the year include three term plays and a Farmer's week play. The three productions for the coming year have been tentatively chosen and work will begin in the fall term choice as soon as school opens.

James Gow's and Arnaud d'Usseau's current "Tomorrow the World" has been chosen to start the year, and the play will be presented Friday and Saturday evenings, Nov. 17 and 18.

Casting will begin the first week of school and rehearsals shortly thereafter. Buell emphasizes that some persons should discard the erroneous idea that casting is done before tryouts even take place.

Equal Chance

Everyone has an equal chance in every play and if he fails to get a part the first time he is eligible to try again. Once a person tries out for a play, a card is kept as a permanent record of his abilities, and if he does not fit the picture in one play he may be the answer to a prayer in the next.

Freshman Women Ineligible

Freshman women are seldom eligible for major productions partly because of lack of proper training and partly because the hours which they must keep do not coincide with rehearsal hours. However, second term freshmen with upperclass hours are eligible.

The play for spring term is indefinite, but Buell hopes to do Noel Coward's "Blythe Spirit," although it has not been released for amateur performances yet. Dates for the winter term feature are Friday and Saturday, March 2 and 3 and the spring production will be part of the senior week activities as usual.

All the work of putting out a play is not the rehearsals of the members of the cast, however. Students help make the sets, produce costumes, and scenery when necessary, act as prompters, make-up helpers, stage hands, curtain pullers and do many other tasks behind the scenes.

C. H. Nickle has charge of set construction for the presentations.

Buell plans to do a series of shows at Fort Custer and Percy Jones general hospital in Battle Creek during the coming year,

Don't be a tradition breaker—no smoking on campus.

Love, "TUBBY."

"Tubby" says Hi-yah to the Freshman Co-eds

A chatty, personally conducted tour through Arbaugh's, Lansing's oldest department store, into a few ramifications, and things.

When you're at State, you'll be called "women" . . . but we'll just call you "gals" and be friendly. So, of course, the first thing you'll want to buy, will be something to take off that cold chill look of your room. After consulting with your roommate (or plural) you can decide on some cheerful drapes . . . and lots of sofa pillows to strew around, and sometimes kick. Arbaugh's always have such a big heap of gay pillows, you'll be tempted literally to dive into them . . . and as for drapery materials, you'll find them by the bolts and bolts on Arbaugh's third floor . . . luscious colors . . . sharp patterns . . . prices that won't hurt a bit. And, since you're going to wear formals often during the year, you'll need at least one full-length mirror, which Arbaugh's sell for only \$2.25. Across from the drapery and mirror dept. you'll find lots of little throw rugs, so soft and thick, you'll irresistibly dig your toes into them beside your bed. Now, your room is rapidly assuming a more human, lived-in look, and since Arbaugh's is a complete department store in every sense of the word, you'll find everything from your pet stationery to your one and only . . . to the niftiest new addition to your sweater collection. In fact, that Arbaugh Sports Dept. is simply swell, and you'll like the kids who do the selling, too. Of course, if you're determined to have something in your wardrobe that's out and out "he-man" . . .

you'll find a warm welcome in Arbaugh's Men's departments on the first floor . . . or the Boys' dept. for that matter. There you'll find just the right, rugged sweaters to sag from your shoulders, slacks with that precision tailoring found only in men's wear, loud plaid flannel shirts, ad infinitum. The fashion mags are devoting pages and pages to the college girl's appearance, and it appears as if your hair will be neater, and if not more confined, at least it won't gallop behind your shoulders a half-yard in the wind . . . so, in the matter of hair-glamour, you'll find at Arbaugh's all manner of bows, flowers and colorful things to challenge the imagination of the professors, and to give personality to your hair-do, different every day in the week, if you desire. Of course, you won't squander too much time shopping (there are movies to be done, too) . . . so all the more reason to cultivate Arbaugh's where there's everything under one roof. Even your favorite sandwiches, cokes, and sodas in the basement soda fountain. Oh, sure, sure . . . you'll have to walk an extra block or two downtown to get to Arbaugh's, but shucks, it's such a friendly, down-to-earth store, you'll get some extra pleasure out of the jaunt after you get there. Well, gals, you're off to college; may you have good flying weather, no stratosphere flights, and happy landings. S'long, and see you later.

Women Direct Special Class For Freshman Orientation

Weekly Discussion Led By Upperclass Coeds

Michigan State college's only course given for credit and supervised by students is the women's freshman orientation program offered in connection with the regular required physical education courses.

Supervised by the phys-

ical education department, informative class periods are offered once a week under the direction of coed leaders selected by AWS, women's governing body.

This year the classes will be held at regularly scheduled periods. Section A will meet Tuesdays from 2 to 3 p.m. and section B will meet Saturdays from 10 to 11 p.m.

Aids Freshmen

The classes this year will be headed by Sue Averill, Birmingham junior, and Pat Darr, Detroit junior as co-chairmen. They will be assisted by the various discussion leaders.

With the aim of assisting freshman women in adapting themselves to college life, orientation courses take form of discussion groups headed by upper-class women and lectures given by faculty members and other speakers.

Between 15 and 20 women meet in special interest groups for an exchange of ideas, get acquainted sessions and question periods.

Discussion Groups

Such topics as campus interest

points, methods of parliamentary procedure, proper etiquette demanded on various occasions, study habits, personality hints, clothing advice and others are included in these sessions.

Incoming women students are offered a choice of discussion groups from a wide range of interest. Matters of immediate campus organization and social life form the fall term program.

Health Series

Winter term meetings are devoted to a special health and hygiene series under the direction of the women's physical education department.

Winter term classes present outside speakers such as prominent Lansing physicians for talks on health and hygiene. Fall classes often feature talks by campus leaders and administrative heads of the college.

Orientation classes are not offered spring term.

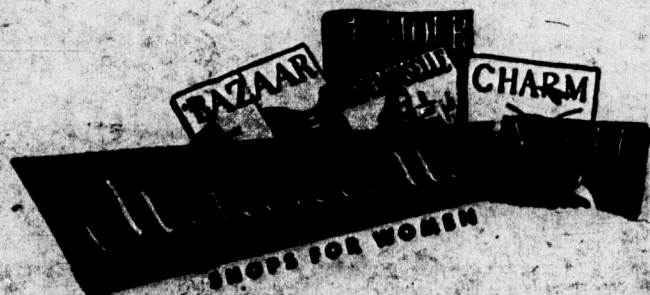
Michigan State is the only college in the world offering musical therapy as a distinct course and was one of the first colleges to offer instruction in Japanese and Russian.

Mademoiselle . . .

It's a
Sweater'n
Skirt
date



- Coats
- Suits
- Dresses
- Cosmetics
- Lingerie
- Perfume



Welcome Freshmen —

THE STATE COLLEGE BOOK STORE

A Department of Michigan State College operated non-profit for the benefit of its students—located off-campus, near the Peoples Church.

WE'LL BE SEEING YOU

STATE COLLEGE BOOK STORE

Fraternities' Rushing Plan Unchanged

Fraternity rushing at Michigan State, although on a greatly reduced scale, will be continued in much the same manner as it has been carried on in the past.

There are 17 national fraternities at State, 16 of which are attempting to carry on a semblance of former activities.

All incoming men students interested in fraternity rushing, will meet at a smoker to be held at 8 p.m. Wednesday, Sept. 20, in the Union ballroom, according to Jack Carrier, Detroit junior and president of Interfraternity council.

No Obligation

Purpose of the smoker will be to give men a chance to meet representatives of all fraternities functioning on campus, but will not obligate rushees to attend future parties of any one group unless they wish to.

Bob Edgell, Elmira, N. Y., senior, will present a program of magic acts at the smoker, for entertainment, and refreshments will be served.

No fraternity group is allowed to pledge for the first three weeks of fall term, in accordance with the council's deferred rushing system, in order to give all houses an equal length of time in which to become acquainted with the men being considered, and to guarantee that the men will have ample opportunity to get acquainted with the various groups before making their decision.

Few in Own Houses

Among the national groups on campus only a few will be occupying their own houses this fall. Others have leased their residences to various sorority groups.

Eight members of Alpha Epsilon Pi will be living at—501 Sunset Lane this fall, with Al Chaefts, Detroit senior, as president.

Twelve active members of Alpha Gamma Rho will be housed at 803 East Grand River, with Prince Bondarenko, Akron junior, serving as president of the group.

Exchanged Houses

Bill MacReynolds, Detroit sophomore, is president of Alpha Tau Omega for the coming year, and the men will live at 421 Abbott Road, having exchanged houses with the Kappa Deltas for the duration. The ATO house is at 451 Evergreen.

Members of Delta Chi will be headed by Jerry Kenney, Detroit sophomore, the Pi Phi Gammas will live in the Delta Chi house at 101 Woodmere this fall.

FarmHouse fraternity, principally for students in Agriculture, forestry and Veterinary medicine, has 16 active members who will live in the former Hedrick co-op at 903 East Grand River this fall. John Bardens, Lowell, Ind., junior, is president.

Several Members

Eight active members of Psi Upsilon fraternity will continue activities this fall with Bob Edgell serving as president. A majority of the members will be living at 403 Oxford Road.

Mac Cropsey Marcellus senior, will head the activities of Phi Kappa Tau in their house at 223 Delta Street. Active membership includes 19 men.

Sigma Alpha Epsilon has 21 active members on campus at the present time, with Bob Azelton, Lansing senior, serving as president. They will be living in their house at 131 Bogue Street this fall.

Other Fraternities

Twenty-three members of Sigma Chi are active on campus at present. Tom Reutner, St. Louis, Mo., senior, is president of the group, which occupies the house at 720 East Grand River.

Approximately 15 Sigma Nus, headed by Jim Bibbins, Buffalo, N. Y., senior, are living in the Sigma Nu house at 444 Abbott Road now.

Other active fraternities on the Michigan State campus are Kappa Sigma, Lambda Chi Alpha, Pi

Sec—FRATERNITIES—Page 15



WARDROBE STRETCHING

Sweaters

398

All-Wool Slipovers
— and Cardigans!



Both these styles in soft, lady-like fine-gauge knitting or rough and tumble coarse knit. Delicate pastels: blue, maize, pink, lilac. Jockey Red, White, Black and Spice Brown, too. Some novelty and plain knit coat sweaters.

FINE OR COARSE KNIT
ALL WOOLS

4⁹⁸

A "must"—for campus wear. Try twinning up a slipover and cardigan! Soft, precious all wool in colors to go with all your skirts. White, Rose, Maize, Aqua, Red and Blue. Sizes 34 to 40.

LONG OR SHORT SLEEVE
ALL WOOLS

2⁹⁸

Lovely colored sport sweaters to wear the whole three terms! Long sloppy style push-up sleeves or dainty short puffed sleeves. All wool, too! Soft-toned pastels and useful neutrals. 34 to 40.

THIRD FLOOR

PENNEY'S
J. C. PENNEY CO., INC.

In the a
big shots,
where the
in East L
(Big Men
Campus)
als, coord
eau chiefs

State has
and OWIs,
well organ
ment syste
who run it
bility in th
collegiate a

Since me
now, it is l
most impo
or campus
orities in a
dent of Stu
ing body
the smooth

Bibbins Co
Jim Bibb
falo, N. Y.,
tlemen who
Key, men's
all importa
tan man ho
situation is Ja
good lookin
is president
council.

One not
way of ca
at least in
to the war
ing promi
campus po
by men.

For the
tory all to
tions are b
Occupying
in Publicat
ion annex,
men who h
agement o
the absence

Student Jo
In the fir
home of
humor ma
the duratio
ara Fearn
junior, whe
ger of the
she isn't th
getting ad
paper.

Next do
office, bea
down type
piring jour
Amid th
type mach
Detroit ser
nison, East
ager and c
rect the a
night edito
for each o
Kay Bes
Betty Jo C
ior, Mario

A

R

Elimi

using

servic

city.

SERV

up to

Then

dry sh

For y

ward

PH

A

BMOC to BWOC Tells Tale of Campus Personalities

Infiltration Into Men's Jobs Becomes Common

In the army they have big shots, in the navy they have big shots, in Washington they have big shots . . . everywhere they have big shots, even in East Lansing. Only in East Lansing they are known as BMOCs and BWOCs (Big Men and Women on Campus) instead of generals, coordinators and bureau chiefs.

State has no WPBs and OPAs and OWIs, but it does have a well organized student government system and the persons who run it have a great responsibility in the smooth running of collegiate affairs.

Since men are a scarce article now, it is logical that one of the most important male students on campus should receive priorities in attention. He is president of Student council, governing body which accomplishes the smoothness of affairs.

Bibbins Council President

Jim Bibbins, senior from Buffalo, N. Y., the quiet spoken gentleman who is president of Blue Key, men's honorary, holds this all important job. Another Spartan man holding a prominent position is Jack Carrier, blond and good looking Detroit junior, who is president of Interfraternity council.

One noticeable trend in the way of campus leadership, due at least in some small measure to the war effort, is the increasing prominence of women in campus positions formerly held by men.

For the second time in history all top publications positions are being held by women. Occupying two adjacent offices in Publications row in the Union annex, are the mobs of women who have taken over management of the State News in the absence of the men.

Student Journalists

In the first office, formerly the home of the Spartan, college humor magazine suspended for the duration, is vivacious Barbara Fearnside, St. Clair Shores junior, who is advertising manager of the State News. Or if she isn't there she is probably out getting ads for the next day's paper.

Next door at the State News office, beating away at broken down typewriters, are MSC's aspiring journalists and whatnot.

Amid the din of the AP teletype machines, Peg Middlemiss, Detroit senior and Barbara Denison, East Lansing senior, manager and editor respectively, direct the activities of the five night editors who are responsible for each of the five issues.

Kay Besemer, Belleville senior; Betty Jo Cornish, Standish senior; Marion Heckel, Detroit junior, Janice Hopps, Ypsilanti junior and Barbara Jones, Glen Rock, N. J. junior, are the night editors for the coming year who daily look for a janitor to sweep the office while they edit yards of copy.

Women Head Wolverine

At the other end of Publications Row is the Wolverine office where two more coeds hold sway over their staffs. Editor of the yearbook is Sue Foo, St. Johns senior, with a ready wit as sharp as a tack, and business manager is friendly Phyl Boss, Lansing junior, who is always willing to make a deal.

More women . . . hard working, energetic Sally Selfert, Grand Haven senior, is head of Michigan State's CDC, now a student branch of the American Red Cross.

Up in the counsellor for women's office, attractive Jane Cumming, Detroit senior, president of AWS, Associated Women Students, and Jean McKerring, Flushing senior, president of PanHellenic, coordinate affairs affecting women students.

One of the top women of the senior class is Dorothy Jury Shaw, Detroit senior, who is president of Mortar Board, senior women's honorary. Peggy Frimodig, East Lansing sophomore, holds the same position in Tower Guard, sophomore women's honorary.

FRATERNITIES

(Continued from Page 14)

Kappa Phi, Theta Chi and Phi Delta Theta, the latter with 25 members living at 523 Abbot road, having exchanged houses with the Delta Zetas for the duration. The Phi Delt house is at 626 Cowley.

Student Jobs Handled By Placement Office

Part time jobs for students in town and in college departments will be handled through the college placement office, headed by Prof. Tom King.

Any students who know in advance that they will need work, are asked to write King, addressing mail to the placement office, Michigan State college.

College authorities prefer that freshmen do not work during fall term. They are encouraged to establish their scholastic standing first, King said.

MEN'S FASHION NOTES

Balanced Wardrobe Should Be Male Goal Frosh Men Have Problem of Matching Items to Blend Into a Clothing Ensemble to Wear for Any Occasion

By JERRY KENNEY

Despite clothing caution for those who expect to go to the armed forces soon, the problem of what to wear is still of more importance than the question of freshman English or college algebra to prospective freshmen.

Balanced Wardrobe Gets Bid

For the average freshman, leaving home for the first time, or perhaps returning to civilian life after a hitch in the army, the first year in college means the biggest splurge in clothes buying since the purchase of the first pair of pants. And regardless of the size or extent of the clothing budget, the most important fact to be born in mind is that the buyer is striving for a balanced wardrobe. He is not buying individual trousers, coats

or shirts, he is buying to go with what he already has.

The shortage of clothing, fabrics and colors will mean that even more than the usual care will have to be taken in selecting clothes. Most fabrics obtainable today are not all virgin wool. The cotton or rayon added to the wool, while not greatly affecting the appearance, do reduce the amount of wear and tear they will stand up under.

There is always a temptation on a clothes buying spree to get the thing which catches your eye, and then find out in a week or so that it won't blend in with your wardrobe.

Flashy Sport Coat Out

The flashy sport jacket can have its place, but if it doesn't fit with what you have, the money is much better spent for a couple of substantial shirts or a good supply of socks, neckties, and accessories.

Each college town has its own style eccentricities, and what is correct at Michigan State might not fit in at an eastern or southern school. For this reason it's always a good idea to wait until looking at the Lansing and East Lansing shops before completing your wardrobe.

General style trends come first to college stores and campuses, and often college wear starts the trends.

Military Fabrics Popular

Military fabrics and flannel are the most popular suit materials, while corduroy is often favored for the casual "station-wagon" jackets. These sport coats have the quality to blend with almost any type of sport or dress slacks.

Not the least important item of clothing is shoes, and here the old rule of quality above quantity, essential to a well dressed person, is enforced by rationing. Heavy brown shoes are both popular and necessary, for that military class. Loafers too are very popular for mild weather wear.

Some sort of raincoat is needed for the long treks from class to class on rainy days. Light weight jackets find plenty of use also.

Laundry Becomes Problem

Another point which is easily forgotten in filling out a wardrobe is the laundry problem. Reserves in underwear, socks, shirts and handkerchiefs must be enough to hold out in case the post office is slower than it should be.

Belts in hand tooled leather or plastic conform to the trend toward ruggedness. Socks may range in color from loud to screaming with argyles rated

tops, except for three or four of a moderate tone, suitable for dress wear. Sweaters of all types are very popular, blue and yellow are great color favorites. Heavy woolen shirts, either plain or plaid, are very well liked also.

It's not really important that you follow the fashions. They are not compulsory — but nothing can take the place of a press in your pants and a shine on your shoes.

AWAY WITH YOUR LUGGAGE TO
COLLEGE BY DEPENDABLE

RAILWAY EXPRESS

Eliminate that luggage transportation worry by using RAILWAY EXPRESS. Direct delivery service to the college or any address within the city. Phone your Express Agent for PICKUP SERVICE. Reasonable rates. Free insurance up to \$50.00 without additional charge.

Then use RAILWAY EXPRESS for those laundry shipments at our special laundry rates.

For your convenience shipments may be forwarded prepaid or with charges collect.

PHONE YOUR EXPRESS AGENT FOR
ANY ADDITIONAL INFORMATION

For Your Eating
Pleasure



As Ever THE NEW HUT Is at
Your Service



Stamps will buy his socks and helmet,
Bonds will buy his gun.
Save — So Uncle Sam can spend,
Until the war is won.

— Buy War Bonds and Stamps —

THE NEW HUT Steak House

312 E. MICHIGAN — LANSING

Hours 12 a. m. — 9 p. m.

Closed All Day Monday

The Only Store Handling a Complete Line of USED BOOKS

PAPER SUPPLIES

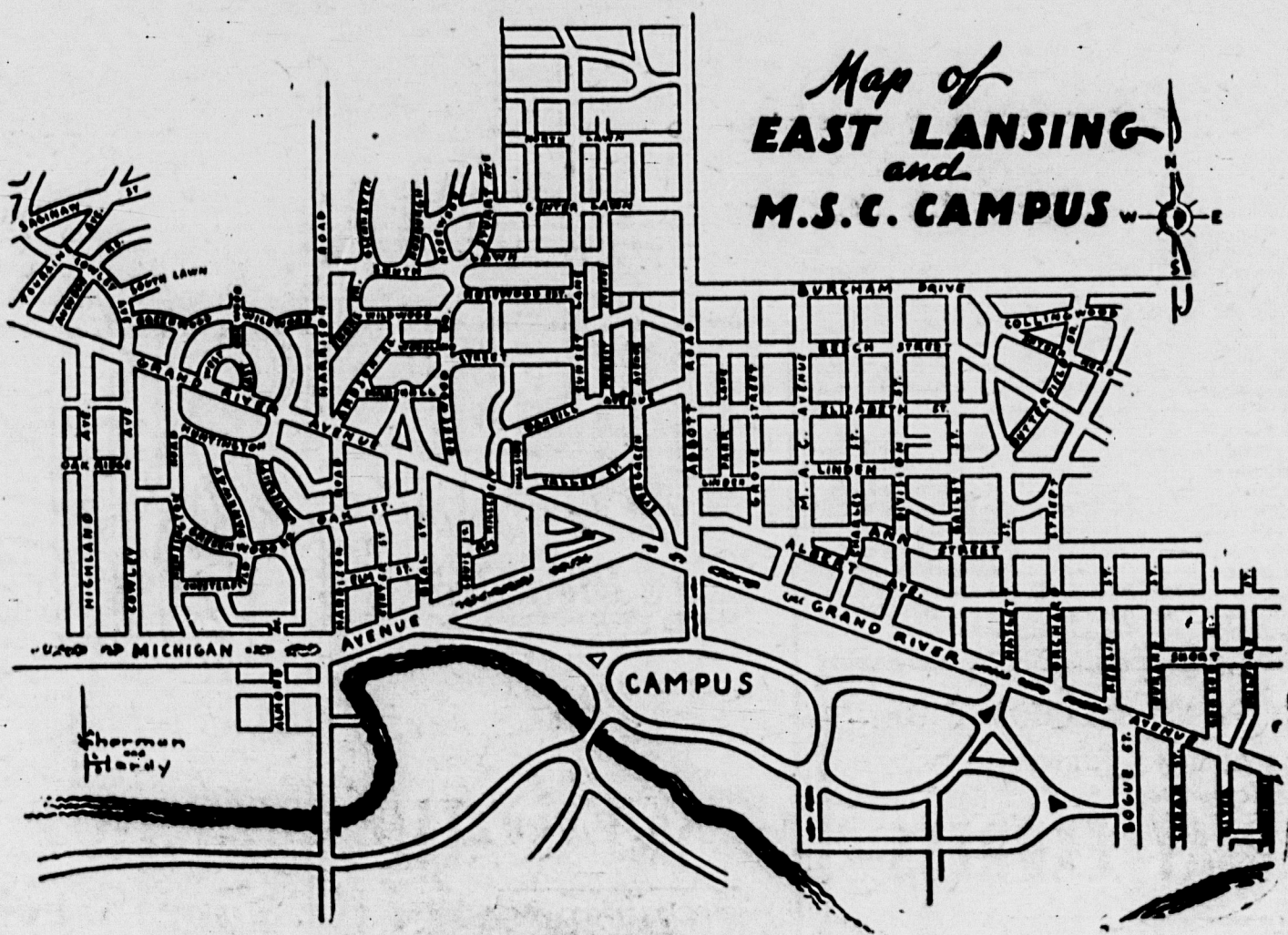
LAB EQUIPMENT

STUDY LAMPS

PENNANTS

JEWELRY

STATIONERY



CAMPUS BOOK STORE



VOL. 332,33

MS

Meeting

Let's put
prowl across
and gymnas
are guiding
intercollegia

Out in the
lege field ca
ball Maestro
and Backfield
singer explain
his backfield
man coached a
team last fall

Over by the
drilling stalwa
Kobs, who has
as baseball co
football line
formerly the
coach.

In the cool
gym we find
whose set shot
ball is widely
templating the
his team will
winter. He als
team that took
tercollegiate
spring.

Athletic D
Young is up i
a long distanc
effort to sche
ball game for

Karl Schlae
Brown are tal
pects for trac
Charles Schmi
out for some
Mentor Char
down in the
with some pr
in anticipation
this winter.

Fendley C
coach, is up
teaching a clas
of takedown a

Intramural
Frimodig has
working out a
year. Helpin

Burt, his offic
way off to c
Dahlgren, "Br
Daubert, and
who designed
course. All o
instructors.

AWS
Govern

Judiciary.

Women's ac
State are gove
Women Stud
women studen
AWS and are
its constitution

At the begi
each new coe
AWS handboo
plain the cod
students and
and provision

AWS coun
representative
which are el
vote each sp
also includes
from all wom
This year's
Cumming, Det

Working un
of it is Judici
composed of
each dormitor
off-campus re
board deals w
AWS rules.

Another bra
Point Limitati
fice or activi
campus carri
amount of thi
the activity.

The number
may hold is li
ership may l
that more stu
pate in activ

MSC Returns to Intercollegiate Competition

Meeting the MSC Coaches

Let's put on the comfortable shoes and take a prowling across the Red Cedar to the Jenison fieldhouse and gymnasium for a look at the men who once more are guiding Spartan athletic teams, after a year without intercollegiate sports.

Out in the sun of old college field can be found Football Maestro **Charles Bachman** and Backfield Coach **Joe Holsinger** explaining a new play to his backfield candidates. Bachman coached a Camp Grant army team last fall.

Over by the blocking sleds drilling stalwart linemen is **John Kobs**, who has served 20 years as baseball coach and is now football line coach. Kobs was formerly the freshman football coach.

In the cooler interior of the gym we find **Ben VanAlstyne**, whose set shot system of basketball is widely known. He is contemplating the powerful schedule his team will have to face this winter. He also developed a golf team that took a fifth in the intercollegiate tournament this spring.

Athletic Director **Ralph H. Young** is up in his office making a long distance phone call in an effort to schedule another football game for this fall.

Karl Schladerman and **Lauren Brown** are talking over the prospects for track this year while **Charles Schmitter** is on the lookout for some fencers. Swimming Mentor **Charles McCaffree** is down in the pool working out with some promising swimmers in anticipation of competition this winter.

Fendley Collins, wrestling coach, is up on the fourth floor teaching a class the fundamentals of takedown and pin holds.

Intramural Director **Lyman Frimodig** has his hands full working out a program for this year. Helping him is **Warren Bart**, his office assistant. On their way off to class we spot **Jake Dahlgren**, "Brick" **Burhans**, **Jake Daubert**, and **King McCristal**, who designed the safety skills course. All of them are phys ed instructors.



CHARLES BACHMAN
... football coach ...

Experience in Radio Made Available By Workshop Group

Actual opportunity for work in radio production is offered to Michigan State students under the Radio Workshop group directed by **Joe Callaway**, director of radio education.

The student organization presents a half hour dramatic broadcast over station WKAR every Thursday.

Radio Workshop offers an opportunity for both directing and acting and this year will also give experience in writing and adapting radio scripts.

Freshmen who are interested will be given an opportunity to try out fall term with a five minute audition stressing characterization and interpretation.

Council Heads MSC Student Government

Organization Contains Elected, Ex-officio Representatives

A provisional council to carry out war and student activities for the duration is the purpose of the reorganized Student council at Michigan State college.

Reduction of the size with a view toward increasing the efficiency and competence of the student governing organization was carried out spring term of 1943 under the group's first woman president.

Bibbins Is President

Newly elected Pres. **Jim Bibbins**, Buffalo, N. Y. senior, is carrying out the plans set up by the body a year ago spring term.

Formerly candidates campaigned for election to the Student council. Under the new system, anyone is eligible to submit a petition for election, but the actual choosing of members is done by a vote of the present members and newly ascended members at the time of election.

Has Ex-Officio Members

Ex-officio members now include representatives of AWS, PanHellenic council, CDC, State News, Union Board, women's dormitories and off-campus, Interfraternity council and Interfaith council.

The representatives may be either the president of the organization or an elected representative to be chosen by the group itself.

Faculty advisers for the group include Pres. **John A. Hannah**, Miss **Elisabeth Conrad**, Counselor for women; **Fred T. Mitchell**, counselor for men; **Tom King**, social chairman; **Prof. J. T. Caswell** of the history and political science department and a member of the military staff to be selected when the need arises.

Council projects for the ensuing year promise a renewed interest in student affairs with the council backing every worthwhile affair possible.

Faculty Votes to Resume Athletics After Year's Absence From Field

Kansas State, University of Missouri, Carnegie Tech, University of Maryland and Wayne Listed as Spartan Opponents for 1944

After going through a full season last year without any intercollegiate athletic competition at all, State will return to its former sports fields this fall with a five game football schedule facing the Spartan grid hussies.



RALPH YOUNG
... athletic director ...

Local YWCA Provides Big Activity Program For Spartan Women

The YWCA at Michigan State plays a prominent part in extra-curricular activities of a large number of women students. Membership is open to all women, and both sorority and independent women work on a common basis in the organization.

Widening the social and educational scope of the college woman is the main purpose of the organization. During the year the Y sponsors many events, including a tea late fall term to introduce freshman women to members and to faculty members.

Every other week YWCA members meet in groups to discuss particular subjects or plan their part in some program. President of the Y for the coming year is **Joanne D'Arcy**, Detroit senior.

Seven basketball games have already been booked for this winter's cage team. More games are in the cards and only talking is needed to cinch them.

First foe the Spartans will face will be Kansas State Saturday, Oct. 14, in Macklin field on the campus. The next game is scheduled for Saturday, Nov. 4, with the University of Missouri at Columbia, Mo. The Armistice day competition will be provided by the University of Maryland, Nov. 11 at State.

Last Game Nov. 18

Carnegie Tech will come to East Lansing Nov. 18 to play the Spartans in the last game of the season. State's other away game will be with Wayne university in the University of Detroit stadium in Detroit. It will be played on a Saturday afternoon, but the date has not been fixed yet.

Negotiations, under the direction of **Ralph H. Young**, athletic director, are continuing with other colleges in an effort to fill out the schedule to six or seven games. Young hopes to fill the three vacant dates in October, but prospects are not too good.

Return Vote

Michigan State's faculty voted to return to intercollegiate athletics after a year's absence too late this spring to get scheduling under way before most teams were booked solid for the fall.

August saw some 70 grid candidates turn out for a month of summer practice. Head Coach **Charlie Bachman** was elated at the number of candidates, which far exceeded his hopes. Only one of the candidates has had any previous experience with Spartan intercollegiate sports. He is **Morgan Gingrass**, who was a varsity fullback in 1941 and 1942.

Experienced Player

Gingrass dropped out of school at the end of his junior year. He had an opportunity to work out with the Detroit Lions, professional football team, but he was injured and never played. His injury may keep him on the bench this fall, too.

Several of the candidates have had experience in the campus league, an intermural organization formed last fall when intercollegiate sports were dropped. Among them is **Jack Breslin**, fullback from Battle Creek, who is a good ball carrier and an outstanding punter. **Bob Godfrey**, a top notch guard, played last fall also, and may be courted on this year for plenty of action.

Basketball foes for this winter include: Ohio State, University of Iowa, University of Kentucky, Syracuse, Temple, Wayne, University of Detroit, Albion and Indiana. Schedules for other sports are being considered or will be drawn up as the season comes around.

Organizations to Meet

Michigan State has more than 100 separate clubs, organizations and societies. Several of them are not functioning during the war for lack of members, but those which are will hold individual meetings during the first month of fall term.

AWS Comprises Women's Governing Body at State

Judiciary, Point Limitation Boards Function

Women's activities at Michigan State are governed by Associated Women Students' council. All women students are members of AWS and are under the rules of its constitution.

At the beginning of the term, each new coed will be given an AWS handbook, which will explain the code of the women students and list all the rules and provisions of AWS.

AWS council is made up of representatives from each class which are elected by popular vote each spring. The council also includes ex-officio members from all women's organizations. This year's president is **Jane Cumming**, Detroit senior.

Working under AWS as a part of it is Judiciary board, which is composed of the presidents of each dormitory and sorority and off-campus representatives. The board deals with all violations of AWS rules.

Another branch of the AWS is Point Limitation board. Each office or activity for women on campus carries with it a certain amount of time and service in the activity.

The number of points any coed may hold is limited so that leadership may be spread out and that more students can participate in activities.

Campus Beauty Brought About by Planning

The beauty of Michigan State's campus is the result of a long time program of retention and maintenance of natural beauty under the supervision of MSC officials.

Although the original purchase of 676 acres in 1856 was finely wooded, it took working students and faculty many years to eliminate the beauty mars of scrubby timber and poor shrub plants.

Employment of **Adam Oliver**, landscape gardener from Kalamazoo, to lay out the college park and locate paths and drives, started the first landscape planning in 1862.

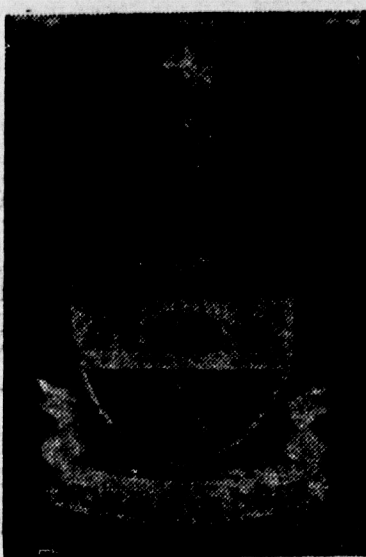
Planted Fir Trees

While **Oliver** was planting Norway pines and evergreens, many of which are standing today, **Dr. H. M. Thurber**, second professor of horticulture, was planting such exotic trees as Ginkgo, Siberian pea, Kentucky coffee and Japanese quince.

Tree planting continued under the supervision of **Dr. W. J. Beal**, who in the spring of 1896 planted the first rows of white pine on the extreme eastern end of the

college grounds. Now known as Pinetum, this grove has been firmly interwoven with college tradition.

The first campus walks were laid out in 1893 and in 1894



MSC COAT OF ARMS

Prof. W. O. Woodworth installed the first campus lighting system and the campus began to take on a planned appearance.

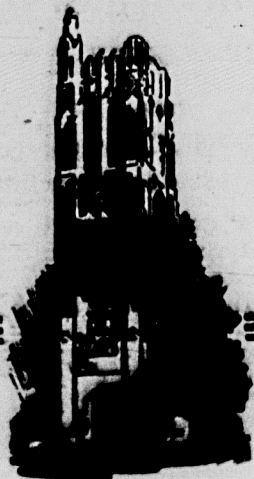
Campus architecture went on at State with only minor improvements and additions until, in 1912, **John W. Beaumont**, then a member of the state board of agriculture (later he donated Beaumont memorial tower) suggested that a master plan for building placement should be formulated for future reference.

Master Plan Adopted

At this suggestion in 1921, **T. Glenn Phillips** was engaged by the board as college architect. Under his direction a landscape plan for the college was adopted. The plan embraced a planting system for shrubs and trees and location plans for roadways and walks, existing and proposed buildings.

Following this master plan 40 obsolete college buildings have either been razed or moved to allow for the growing needs of the college. Post war plans call for 17 additional buildings to be built as soon as priorities allow.

There Is A Place for You at MICHIGAN STATE COLLEGE



Fall Quarter Opens September 19

Beaumont Memorial Tower occupies the central spot on the Michigan State College campus. To faculty, alumni, and former students it symbolizes the spirit of the Spartan men and women.

AS THE oldest land grant college in the United States and the oldest agricultural college in the world, Michigan State college gives a technical, practical, and cultural education to its student body of soldiers and civilians.

In the 89 years since its founding in 1855, Michigan State college has grown from one building and four faculty members to a progressive university with an educational program that includes the adult and youth, the scientist and the non-technical man, the agriculturist and the engineer, the homemaker and the dietitian, the businessman and the teacher. It has approximately 137 modern buildings and more than 2,500 acres of land. These provide facilities for training men and women for war and peace.

Eighty-nine years ago the courses of study at Michigan State college consisted largely of cultivating the college grounds. Most of the labor—removing of stumps, digging ditches through the new clearings and cultivating cleared land—was done by students. Today, the courses of study are divided into six major schools. They are Agriculture, Engineering, Veterinary medicine, Home Economics, Science and Arts, and Business and Public Service. More than 60 departments of study provide cultural and technical opportunities for specialization.

The graduate school provides opportunities for students to enroll in courses leading to the degrees of master of arts or of science and doctor of philosophy.



Administration Building

War has brought many changes to the academic structure of Michigan State college. The school of Agriculture has established courses to train men and women for specialized work in agriculture, including food production. In addition, more than 30 short courses, special courses, and conferences are offered during the year.

The school of science and arts provides special courses in physics, chemistry, geography, radio, meteorology, photogrammetry, applied music, public school music, pre-law, pre-medical, pre-dental, economics of war, contemporary history, psychology of war, elementary and advanced navigation, Russian, Arabic, and Portuguese. Many of these courses are a part of the curriculum for the several army training detachments on the Michigan State college campus.

In the school of Engineering, Michigan State college offers training to students in chemical and metallurgical engineering, civil and sanitary engineering, electrical and mechanical engineering. Since war began, the school of engineering has been offering a series of short, intensive engineering courses for men in war industries. These twelve week courses are usually given at night.

The school of Home Economics offers courses in clothing, foods and nutrition, institution administration, related arts, and vocational education in homemaking. The school also offers a five-year course in home economics and nursing given in cooperation with the local hospital. War has created many demands in the school of Home Economics. Refresher courses and institutes are given throughout the year to help bring to home economists in Michigan the newest information which, in turn, can be taken to local communities.

The school of medicine has been operating on an accelerated basis during the war time. On this basis, it is possible for veterinary students to complete the four-year course in three calendar years. Demands for veterinary graduates by the army, civil service, and private practices are greater than at any other time in the past.

With the opening of the fall quarter, Michigan State college starts its program of basic education for all students. Basic education is designed to provide a broad foundation on which students may build an intelligent interest in personal, family, vocational, social and civic problems, a better understanding of these problems, and a greater ability to cope with them. It includes study of man's relationship to physical, biological, and social sciences, and increased knowledge of the historical background of present-day civilization, and an enhanced appreciation of cultures, past and present, that have been expressed in literature, music and art.

Called the basic college, all freshman students will enroll in the school the week of Sept. 19. They will be classified in this school for two years where they are required to take at least five of the seven comprehensive core courses. Students already decided on their special interests will enroll in the school offering that specialty, as well as in the basic college, thereby identifying themselves with their special fields while studying the broader basic courses.

The health of the student body is under the supervision of the health service on the campus. This includes a modern hospital with a capacity of 60 beds and a dispensary located in the hospital. All full-time students are entitled to advice and

treatment, a medical examination by appointment, and 60 days of free care in the college hospital each year.

Michigan State college exerts every effort to assist the student in starting a college career that will be a successful one. Members of the faculty give liberally of their time to serve as freshman advisers during freshman week and throughout



Laboratory

their freshman and sophomore years. Department heads serve as advisers to junior and senior students who specialize in the various departments.

To keep pace with increased enrollments at Michigan State college during the past decade, major buildings have been constructed costing more than \$6,000,000. Prior to the war, the civilian enrollment reached approximately 7,000 with a teaching staff of about 600. In addition 368 men and women are engaged in extension, experimental and research work.

Army schools represented on the campus are the Army Specialized Training Program, Army Specialized Training Reserves, and the Air Corps Enlisted Reserve Corps. The army began operating its first school at Michigan State college in April, 1943. These students receive degree credit for work completed at Michigan State college. The soldiers have the privilege of transferring this credit to any school where they desire to continue their education following release from the army.

A Servicemen's Institute has been established on the campus for returning war veterans who are eligible to receive benefits from the "G. I. Bill of Rights."

College and university accrediting agencies have placed their stamp of approval on Michigan State college as a class-A institution. These agencies include the North Central Association of Colleges and Secondary Schools, the Association of American Universities, the Association of American Colleges, the American Association of University Women, the National Association of Schools of Music, the Society for the Promotion of Engineering Education, and the American Veterinary Medicine Association.

For additional information on how Michigan State college serves its student body in war and in peace send your request to the office of the registrar, Robert S. Linton.

MICHIGAN STATE COLLEGE . . . EAST LANSING

Teaching . . . Research . . . Extension

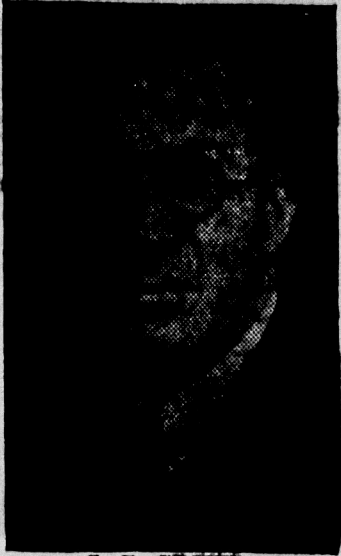
Welcome to Freshmen

The Freshman week orientation committee is very happy to extend a most cordial welcome to all new students.

A great deal of planning is done to make your entrance into Michigan State college as easy as possible. The period known as Orientation week is set aside to aid you in becoming acquainted with the college and its policies.

During this week you will meet your counsellor, make out your study program and complete your registration details. A certain amount of social activity is mixed in with the business of academic orientation and registration.

We hope and believe that you will enjoy your entrance into Michigan State college. It is a great institution with as fine a student body as there is anywhere in the United States. Very soon you will discover its friendly spirit and later you will help to maintain and carry on the long established traditions.



S. E. CROWE
... dean of students ...

64 Freshmen Will Attend College on Alumni Scholarships This Fall

Sixty-four members of the class of 1948 will attend school this year on alumni scholarships. Half of the number will represent each of the state's 32 senatorial districts, while the other 32 are selected from the state at large.

Equivalent to the \$120 fees for the three terms of the regular school year, the scholarships are awarded to needy outstanding high school students for high scholastic standing plus extra-curricular activities.

Although such awards are given only for the freshman year they may be renewed at the end of each year on attainment of a sufficiently high college grade average.

Recipients of alumni scholarships are requested to meet with the committee on scholarships and with Glen Stewart, acting chairman of the committee, from 7 to 8 p.m. Friday, Sept. 22, in the Spartan room of the Union.

FOR 24 HOUR LOVELINESS

GET YOUR

Shampoo

Manicure

Permanent

AT

Peggy's Beauty Shop

223 ABBOTT ROAD

PHONE 8-2812

WOMEN'S FASHIONS

(Continued from Page 7)

pair that is well tailored, in wool or gabardine, and will go well with brother's jacket. It is an unwritten rule at Michigan State that women must wear a full length coat over slacks at all times when on campus.

Fur Mittens Rate

Sad is the kitten who forgets her mittens and it is nice to have a change, so bring two pairs. They are easy to knit and everyone does. Then too, a pair of dress gloves to go with the good coat is taken for granted. Angora or bunny fur mittens have taken over the hand situation for evening wear.

A couple years ago it was knee socks; this year

it's coeds in boys' pants. They are the knee length shorts like the ones the kid brother goes scootering around in; very sharp in grey wool or a bright gabardine.

Too many silver bracelets, huge wrought rings, ear rings and pearls are expected and accepted. Gold and silver identification bracelets are still the thing and the bigger the chain the more he loves you.

Army Groups On Campus Total 759

Since March 1943, Michigan State has had one or more army groups in training on the campus continuously. Four specialized groups remain on campus at the present time although the larger part of the trainees, air force pre pre-flight men, left in June.

The campus always has been more or less military, with the various branches of Reserve Officers Training corps (ROTC) offering instruction to students.

In Abbott Hall

The lack is partially made up for by the 759 army men stationed at the college at the present time. The men are all living in Abbott hall, former men's dormitory east of campus and adjacent to Mason hall, which will house coeds this fall.

Included in the four specialized groups now in training are 100 ASTPs (Army Specialized Training Program) including 47 Veterinary students and 53 engineers; 31 ASTRs (Army Specialized Training Reserves), 17-year-olds, and 628 ACERCs (Air Corps Enlisted Reserve Corps), also 17-year-olds.

CAP Cadets

The 17-year-old ASTRs are in their second term of work which will end Sept. 30. These men are automatically ordered to army training bases on their 18th birthdays.

Included in the ACERC program are 628 men who arrived at the college in July and August from the sixth service command, made up of Michigan, Illinois and Wisconsin. They were civilians recruited especially for training leading to air force cadet status.

Only August Quota

In some cases they may remain after they are 18 depending on the replacement needs of other air force bases. On arriving at the air force training bases, they will be screened to determine which category they will best fit, such as bombardier, navigator or pilot.

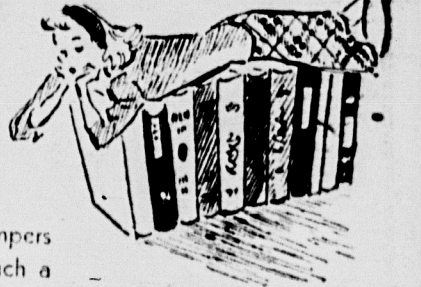
The ASTR and ACERC groups follow a 59 hour week, taking such subjects as mathematics, physics, chemistry, biology, engineering, physical education, English, drawing, history, geography and military science.

If you don't like East Lansing weather, wait a minute, it will change.

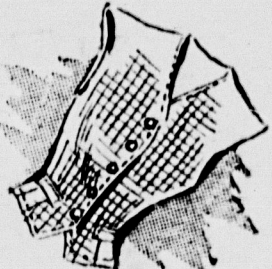


Lansing's Foremost Fashion Institution Since 1917

COLLEGE CLASSICS



Sweaters and skirts; jumpers and shirts are all as much a part of college life as literature and math! And there's a newcomer you'll want ... the vest! Get yours in check or plaid ... or better still, have both!



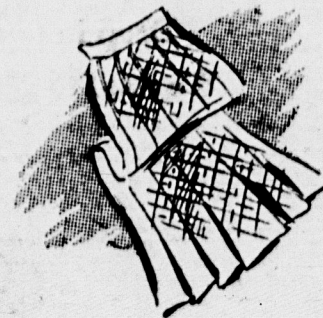
\$5.00

up



\$5.00

up



\$5.95

up



\$7.95

up

The Style Shop

116 W. Allegan Street

Prestidigitation

NO—The printer didn't make an error —
The word Prestidigitation means
Magic and Magic means ...

BOB EDGELL

For the Best in Entertainment

Phone 8-1231 or Write Box 583

'till the boys come home . . .

McGregor Sportswear
Pendleton Shirts
Belmont Rain Coats
Hickok Belts & Jewelry



Arrow Shirts
Stetson Hats
Lord Jeff Sweaters
Inter-woven Hose

ORDINARILY we should be welcoming — as we have done the past 20 years — the thousands of men returning to Michigan State for the opening of fall term. To the comparatively few men who will be attending State this fall, all the more welcome because so few in number, greetings! — and a genuine welcome to make Hurd's your headquarters.

Until the boys return, the girls seem to have 'taken over' the place. Young women shopping for gifts for that Special Someone — and often finding here merchandise designed for men but fitting their own needs — continue to look upon Hurd's as a place where State's finest traditions are kept alive.

One of our 'best buys' now is WAR BONDS. We sell lots of those, too.

Drop in to see us soon — won't you? — if only to say hello. We want to get acquainted with you.

HURD'S
LANSING AND () EAST LANSING
YOU CAN'T LEAVE DISSATISFIED



VOL. 33

To d
Car

The Ne

Rumor
 section w
 near futur
 and adve
 like their
 breakfast.
 ma
 Early to
 Psych
 me
 groans, m
 approval.
 will be fo
 as soon as
 taining b
 peace with
 alarm goe
 are ironed

Wande

To prov
 to the fu
 (only free
 give you
 Jorie She
 man, app
 Bay City
 where the
 could be
 curious a
 interest in
 ed her w
 have in
 replied M
 the BCB
 else cou
 be the E
 Who know

Coed F

Student
 skeptically
 tion pin Y
 dale senio
 fe
 New w
 Pledge be
 ca
 soul que
 seems, w
 that she
 Omega
 down, th
 pression.

Red
Into

HELSE
 25—(AP)
 the Finn
 sinki, tod
 Red fleet
 into the
 trolled E
 time in r
 Russian
 to be fir
 sighted
 Nazi atte
 men even
 two Ge
 which in
 ering the
 drawal fr
 Window
 ware sho
 of gunfi
 hour in t
 Meanw
 somewhe
 stretching
 from Oul
 sian bord
 mishing
 the Nazis

B
 SHAE
 mined
 threatene
 Dempsey
 well as
 troops
 Holland,
 still were
 row corri
 announce
 Headq
 the situat
 bridge an
 firm jun
 sky troop
 circled fo
 bank of t