

Michigan State News

EAST LANSING, MICHIGAN—THURSDAY, FEBRUARY 5, 1959

THE HEIGHT OF ADVERSITY
Clouds are here,
Snow will come
And a high of 15
To make us glad.

PRICE 5 CENTS

ON THE INSIDE
Farmers' Week Photos p. 3
MSU Relays p. 4
I-C Highlights p. 8

VOL. 50, No. 127

MSU Fund Problem Eased

Industries Pay Taxes In Advance

Crisis Solution Only Temporary

Reassuring financial news was received by MSU Wednesday from Sanford Brown, state treasurer, according to Phillip May, MSU treasurer.

As a result of early tax payments by several large Michigan corporations, the state can pay MSU and if of M about five million dollars this month for setting their February payroll. The good news is also accompanied by not-so-promising undertones. According to Brown, if the big corporation tax payments are used to meet current bills and payrolls, the treasury will soon be in trouble again unless the legislature "gives us a large sum of cash — 35 to 40 million dollars."



WATER CARNIVAL rush brought a number of prospective committee members in the Union Wednesday night. The traditional open class project opened places on its several committees to members of all classes this year.

Brown is waiting until he has the money in hand before setting the date of university payments. He stated, however, that the early payments averted state employees and welfare recipients would be paid through February.

Although the premature tax payments by several large corporations will ease the financial crisis for February, the month ahead will have to have new solutions. The Governor's Veterans Trust Fund bills made a little headway in the legislature. The Taxation Committee made technical changes and then sent the bills to the House.

According to May, the anticipated payments from the state for this month's payroll will be in actually the allotments for last November, the first month of deficit. More permanent provisions will have to be determined for future state funds.

Contest Reopened

Because of a mixup in registering J-Hop tickets for the dormitory precinct sales contest, the contest's publicity committee has reopened the competition. Dorm residents may register their tickets in the Union Courtyard today from 1-5 p.m.

Plan Called Discriminatory Williams' Taxation Ideas Meet GOP Resistance

By LYNN SHEPARD
State News Capitol Reporter

Governor Williams' tax proposals met cold resistance in the Senate Wednesday as Republicans lined up against his recommended state income tax.

"Only approximations of fairness can be reached through levying an income tax," Sen. Carlton Morris (R-Kalamazoo) said in opposing the Williams plan to raise tax.

Morris and other Republicans have favored raising the state sales tax to 4 cents per dollar, but have not yet discussed the counter proposal on the Senate floor.

Sen. L. Harvey Lodge (R-Dragon Plains) urged Williams to follow Gov. Robert Meyer's New Jersey formula of balancing the budget "by being frugal with the taxpayer's money."

Democrats answered Lodge and Morris by calling for statesmanship rather than partisan politics.

"You have been asked to come up with something better if something can be devised," Minority Leader Harold Ryan (D-Detroit) told Williams critics.

Sen. Philip Rahol (D-Iron Mountain) warned Republicans that the Democrats have gained strength consistently since Williams first became governor in 1948.

"We're even in the House this year and in 1950 we're going to give you a real chase in the Senate," he said.

Sen. Philip Rahol (D-Iron Mountain) warned Republicans that the Democrats have gained strength consistently since Williams first became governor in 1948.

Sen. Philip Rahol (D-Iron Mountain) warned Republicans that the Democrats have gained strength consistently since Williams first became governor in 1948.

Sen. Philip Rahol (D-Iron Mountain) warned Republicans that the Democrats have gained strength consistently since Williams first became governor in 1948.

Sen. Philip Rahol (D-Iron Mountain) warned Republicans that the Democrats have gained strength consistently since Williams first became governor in 1948.

Sen. Philip Rahol (D-Iron Mountain) warned Republicans that the Democrats have gained strength consistently since Williams first became governor in 1948.

Sen. Philip Rahol (D-Iron Mountain) warned Republicans that the Democrats have gained strength consistently since Williams first became governor in 1948.

AUSG Approves New Sparty Head

Pedestrian Safety Resolutions Proposed for Campus Buildings

Student Congress Wednesday night voted to shrink a "Sparty head" to almost life-size for use at indoor sporting events. The original Sparty used at football games is too clumsy and inconvenient for indoor events, stated Spartan Spirit Director Wayne Reginald.

Acting on a bill tabled last week after remaining in committee for two weeks, Congress changed the original proposal from three heads to one and from 30 to 40.

Three resolutions providing safety measures in campus buildings were quickly passed. They proposed more adequate lighting in the stairwells of Berkeley and Nat Sci buildings, non-skid devices on the stairs and non-skid floor mats at the doors of Berkeley and all other classroom buildings.

Two appointments to the executive branch of AUSG were approved unanimously.

Patricia Meloy, Libertyville, Ill. senior, as personnel director and Jules Hanslovsky, East Lansing senior, as director of public relations.

President Chuck Walther said Miss Meloy was selected because of her wide campus activities and experience. She explained the basic essentials of her new program as an effort to tap leadership potential when it first appears, recruiting leaders and training them to fill responsible cabinet positions.

Hanslovsky's efforts will include supervision of mimeograph cutting, silk screening, letter-writing, hometown news and general publicity.

A bill to appropriate \$50 transportation expenses of Bert Green, academic benefits director and representative to the model-UN session this week in Montreal was referred to Finance committee.

Greek Convo Set Monday

The PanHellenic meeting was held tonight in Student Services. Plans were announced for the IFC and PanHellenic Convention which will be held Monday, 7-8:30 p.m. in the Auditorium.

The program of the convention will feature five key university speakers. A question and answer period will follow the program to give students an opportunity to ask questions about fraternity and fraternity life.

PanHellenic is issuing a pamphlet throughout Michigan and out of state, to high schools for the purpose of acquainting future freshmen with fraternity life. This is the first time that such an effort has been made.

Plans for a survey are being made to determine the actual expense of fraternity membership. This survey will be tabulated and made available to any interested group.

Farm Week Slates Family Fashion Fair

"Family Fashion Fair" will be the theme of the annual Farmers' Week Fashion Show in the Auditorium at 8:15 p.m.

Fashions for the whole family will be shown along with clothes designed and made by the home economics students.



DOROTHY DOANE (left) of WELA and the Jean Severd modeling agency, looks on as late women's fashions are displayed at the Spartan Women's League show Wednesday night. Miss Doane moderated the show, held as part of Kikquette Emphasis Week.

Junior Awards Petitioning to End One Day Later

Petitioning for outstanding junior awards has been extended from Friday until Saturday. Petitions may be picked up and returned to the box in the Union Courtyard.

All juniors except members of Junior Council are eligible for the awards, which will be presented April 25 at J-Day activities.

Selection from among those who petition will begin next week by a committee of two junior class officers, one representative each from Excalibur, Mortar Board, AUSG, Spartan Women's League, Blue Key and the faculty.

Work in living units and campus activities, offices and chairmanships held, athletics, scholarship and religious groups will be among items considered in selection.

Presidents of living units and major campus organizations have been asked to nominate outstanding juniors in their groups to petition for the awards.

From 1891 to 1959, Carriages to Ella

J-Hop Boasts Colorful Background

By JULIE SHEPARDSON

The year was 1891. The event was small and informal. It was held in the rooms of one of the literary societies. This was how the Michigan State J-Hop began.

Progressing up to 1910, the J-Hop became more formal, and by then was the most important dance of the year.

It became so important that a local concern advertised in the paper "Order your J-Hop carriage from J. A. Carr & Son—We have a good line of hacks and carriages." Even grandpa had his transportation problems.

It became traditional to have a banquet starting around 5:30 the night of the dance. Toasts were always given by honored guests to the junior class.

Around 9 the dance began, and at 10 a grand march was in order.

The party-goers at the 1910 dance waited under a southern atmosphere to the strains of Finzel's orchestra from Detroit. At 2:30 a perfect evening ended and the girls rushed home to make the 3 o'clock deadline.

In 1920, a grand total of 153 couples attended the J-Hop. This was almost a record attendance because the dance was open only to juniors and to seniors who had never attended one. This had been the policy of the dance since it started in 1891.

Advertisements were now seen for "Correct footwear for the J-Hop for men, including patent and cloth top button shoes."

Classes were excused after 3 Friday afternoon and Saturday morning for those going to the dance, but evidence had to be shown to teachers to prove that you went to the dance.

The girls were enticed by advertisements in newspapers to buy formal which averaged between \$7.96 and \$10.95 in price.

Tickets for the J-Hop were 38, and students were warned that there would not be a reduction in prices at the last minute.

The men were also encourag-

Sing Again, Patriots! Star Spangled Banner Is Back

The Star Spangled Banner will be played before all home basketball games, beginning with the University of Michigan contest Feb. 14.

Official approval was received Wednesday from both the athletic department and the department of public safety, in response to AUSG's resolution favoring the playing of the anthem and to newspaper and student interest evident in the request.

Arthur Brandt, public safety head, said he encouraged the playing of the Star Spangled Banner.

He stated that he would approve the safety of the stands in a standing crowd, but added that a calculated risk exists. "A calculated risk is involved in anything of this sort," Brandt said, "but in this case it is not so great as to prevent the stand for the national anthem."

Athletic Director Clarence "Biggie" Munn is "all for playing the national anthem especially in bringing out what it and our American flag represent to our citizens."

"We will do it on a trial basis with the thought in mind that there is nothing more important than the safety of our students," Munn declared.

The stands are inspected regularly, and if at anytime they are found unsafe for a standing crowd, the playing of such songs as the Star Spangled Banner and the MSU Fight Song would have to be discontinued.

The national anthem has not been played at MSU basketball games since shortly after the war, following a collapse of bleachers at a Purdue basketball game. Munn made clear.

Activities Band Director Oscar Stover said the Star Spangled Banner is part of the band's standard repertoire. "We play

what we are instructed to play," he said, "and make no decisions of selection. If it is on the program, we'll play it."

FARMERS' WEEK EVENTS

TODAY

- 9:00 Devotional Period
Alumni Memorial Chapel
- 9:00 Dairy
Anthony Auditorium
- 9:00 Agricultural Economics
Fairchild Theater
- 9:00 Agricultural Engineering
Room 116, Agricultural Engineering Building
- 9:00 Beekeepers
Room 108, Kelllogg Center
- 9:00 Farm Crops—Soil Science
Kelllogg Center Auditorium
- 9:00 Home Economics
Union
- 9:00 Turkey Day—Poultry Science
Room 116, Anthony Hall
- 9:00 Resources Development
Tower Room, Union
- 9:00 Sociology and Anthropology
Room 106, Kelllogg Center
- 9:00 Michigan Flying Farmers
Red Cedar B. Kelllogg Center
- 9:00 Veterinary Medicine
146 Gilmer Hall
- 9:00 Style News
University Auditorium
- 9:00 Forest Products
Forestry Cabin
- 9:00 Michigan Association of Farm Managers and Rural Appraisers
Fairchild Theater
- 9:00 World Adventure—Argentina

Farmers' Week Special

Argentina Travelogue Set Tonight

"Argentina Smiles Again" is the title of the lecture film to be narrated by Eric Pavel tonight in the Auditorium.

The program, a feature of the World Travel Series, is being shown in cooperation with Farmers' Week and will begin at 8 p.m. There will be no admission charge.

Edited and narrated by Eric Pavel, who received a degree in engineering at the Swiss Federal Institute of Technology and a degree in economics at the University of Bern, Pavel

speaks six languages including English.

He worked for three years in the film department of the University of Zurich, has made educational color films for the Venezuelan government, and has directed and photographed color films for industry, education, travel and scientific purposes in South America since 1937.

In "Argentina Smiles Again," Pavel will take his audience on a tour of one of the most

attractive countries in South America, Buenos Aires, the capital of Argentina and the largest city in South America, will be staged along with the Pampa, the flat, fertile plain that makes Argentina one of the leading nations in the world in wheat and wool trade.

Other highlights of the film are a visit to Igazu, one of the world's most spectacular waterfalls, and a visit to Bariloche, the Switzerland of South America during the skiing season.

Students Rate L-C Symphonies High

Studies Also Show Interest In Semi-Classical Programs

Symphony orchestras rank very high on the list of things MSU students said they would like in the Lecture Concert Series, according to Dr. Wilson Paul, director of the series.

Dr. Paul found this true when he conducted studies to determine what type of entertainment students wanted at the L-C series.

Beside symphony orchestras, students also showed a preference for orchestras that specialize in semi-classical music such as the Boston Pope.

Of course students like well-known dance and pop orchestras too, he said, but they seem to prefer these at college dances rather than at the concert.

Dr. Paul said he believes that a college student's maturity is reflected in his desire to hear good music.

Since it is good to appreciate all types of good music, the L-C series offers students other music besides the classics. Many students cannot fully enjoy or appreciate a symphony orchestra without having first heard such orchestras as Melachino or the Boston Pope. In other words, taste can broaden a student's appreciation of music, he said.

The L-C series tries to acquaint students with music they might not otherwise hear, said Dr. Paul. Music that has lasted for generations and that has high cultural appeal is stressed.

College students do not seem to be "hip" to rock and roll at all. According to a recent record sales survey, rock and roll records in college student are extremely low. Even though sales of classical records have dropped some in the last year, they still outsell rock and roll records.

Closed-Circuit TV Classes Come of Age

Closed-circuit television is coming of age on the Michigan State campus.

Since winter term 1958, educational TV has been used here to teach classes in advertising, chemistry, communication skills, education, social sciences, and some educational courses.

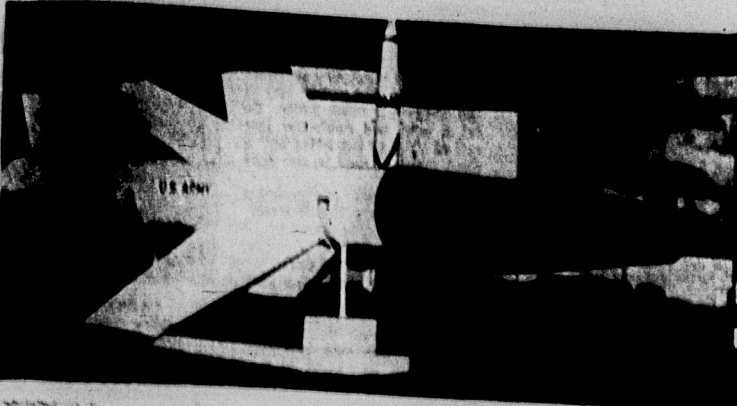
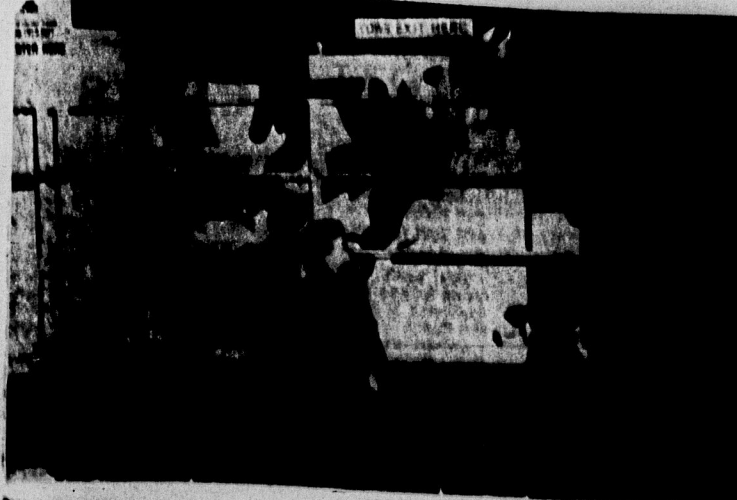
Culler Hall serves as both the studio and the receiving room for the courses. Each viewing room has three television sets and a two-way voice speaker for direct interchange of questions and answers.

The average class size is 30, although there may be two or three sections of one subject at the same time.

The instructors are regular faculty members who had previously been teaching the subject in non-television classes. Television students can come to the cameras and handle other minor production details.

Statistics show very little difference between classes taught on TV and non-TV in respect to grades.

Practically all the world's supply of vanadium, used in the making of high speed airplanes, is exported from Callao, Peru. Vanadium is a metal which has a high percentage of nitrogen and phosphorus.



FARMERS' WEEK CANDIDS

ABOVE: Jack Schottfeld of Inlet City shows the Pet Milk display in Spartan Stadium to his children. He is visiting Farmers' Week as a representative of the Michigan Milk Farmers Assn.

CENTER: The U. S. Army's Latouche missile is among projectiles on display in Dem Hall. The missile is a replica of the real Army weapon.

BELOW: Dr. Charles Etker, MSU DVM, performs an operation to clean a cow's stomach of swallowed hardware before a studio audience and TV cameras. (Photos by Mike Schulman)



RALPH'S "KEWPEE" Cafeteria
Service is Fast

THE FOOD IS GREAT . . .

- ★ Home Baked Pastry
- ★ Delicious Coffee
- ★ Television Room

Open 6 a.m. - 12 p.m.
1:30 a.m. on Fri. - Sat.
LOTS OF ROOM

1 DAY LEFT TO BUY YOUR J-HOP TICKET

THE CHARCOAL HOUSE
IN FRANDOR
WILL BE OPEN UNTIL 2:00 A.M.
FRIDAY & SATURDAY
J-HOP NIGHTS
FEBRUARY 6th & 7th

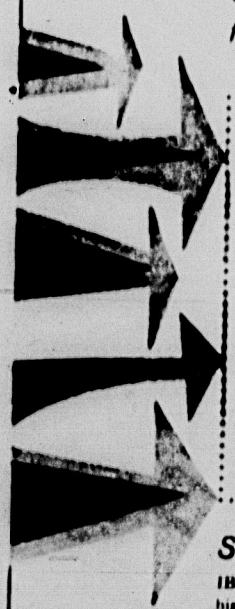
Great buy! the trim-fitting ARROW Glen

It's the shirt with the standard choice in collars—the regular button-down, or permanent stay Arrow Glen Exclusive Mitoga® tailoring carries through the trim, tapered look from collar to waist to cuff. "Sanforized" broadcloth or oxford in stripes, checks, solids \$4.00 up. *Cluett, Peabody & Co., Inc.*



ARROW — first in fashion

IBM invites the 1959 Graduate with Bachelor's or Master's Degree to discuss career opportunities. Contact your college placement office for an appointment for campus interviews.



FEBRUARY 10 & 11

Career opportunities	If your degree major is in
Sales	Liberal Arts • Business • Accounting • Engineering • Mathematics
Applied Sciences	Physics • Mathematics • Engineering
Product Development	Physics • Mechanical • Electrical • Engineering Physics • Mathematics
Research	Physics • Mechanical • Engineering Physics • Mathematics

Some facts about IBM

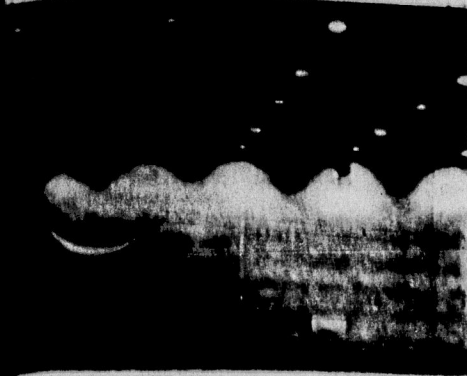
IBM's phenomenal growth offers unlimited professional opportunities to highly qualified graduates. Company policies lay a firm groundwork for stimulating and rewarding careers in the areas listed above. At IBM, you will find respect for the individual . . . small-team operations . . . early recognition of merit . . . good financial reward . . . outstanding company-paid benefits . . . and many educational and training programs.

IBM's laboratories and manufacturing facilities are located in Endicott, Kingston, Owego, Poughkeepsie, Yorktown, N.Y., Burlington, Vt., Menlo Park, Calif.; Lexington, Ky.; and Rochester, Minn. Sales and service offices are located in 186 principal cities throughout the United States.

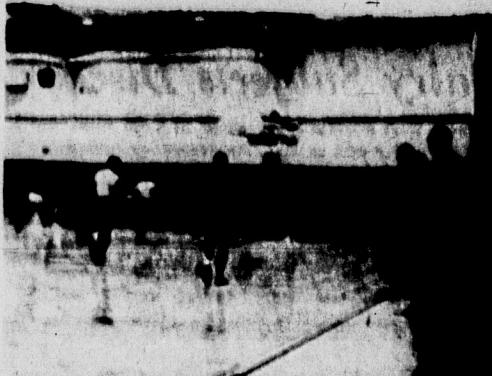
If you cannot attend the interviews, write or call the manager of the nearest IBM office:

IBM Corp.
600 S. Washington Ave.
Lansing 7, Mich.

IBM INTERNATIONAL BUSINESS MACHINES CORPORATION
DATA PROCESSING • ELECTRIC TYPEWRITERS • MILITARY PRODUCTS
SPECIAL ORDERING SERVICE • SUPPLIES • IBM EQUIPMENT



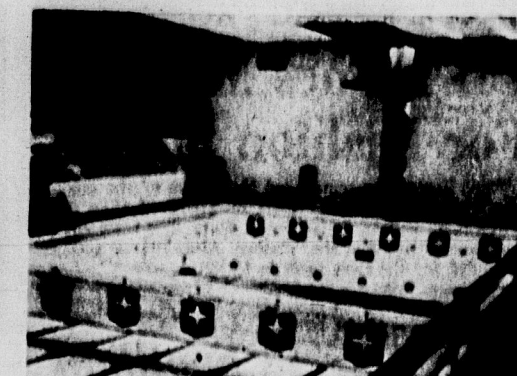
BATTING CAGE is one of the additions to the Men's Intramural Building. The new building will house all of the school's intramural sports.



THERE ARE THREE of these auxiliary gymnasiums primarily for basketball and badminton. It is in use most hours of the day, and at night for IM basketball games.



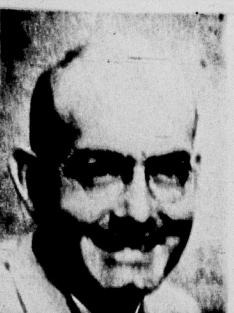
THIS LARGER GYMNASIUM is especially pleasing to tennis players who now have adequate facilities for indoor tennis during winter months.



VARIETY SWIMMING MEETS are slated for this spacious pool which seats 2,000 spectators. It will also be available shortly for student use.

Men's Intramural Building Is Modern Athletic Plant

LARRY WHOLEWISKI, director of the Men's Intramural Building, says the new building is one of the most modern athletic plants in the country. The new multi-million dollar building is centrally located between the main building and the new stadium. The main building is the largest building in the country, and the new stadium is the largest stadium in the country. The new building is the largest building in the country, and the new stadium is the largest stadium in the country.



FRANK DEMAN heads new building.

The building is centrally located between the main building and the new stadium. The main building is the largest building in the country, and the new stadium is the largest stadium in the country. The new building is the largest building in the country, and the new stadium is the largest stadium in the country.

The building is centrally located between the main building and the new stadium. The main building is the largest building in the country, and the new stadium is the largest stadium in the country. The new building is the largest building in the country, and the new stadium is the largest stadium in the country.

The building is centrally located between the main building and the new stadium. The main building is the largest building in the country, and the new stadium is the largest stadium in the country. The new building is the largest building in the country, and the new stadium is the largest stadium in the country.

The building is centrally located between the main building and the new stadium. The main building is the largest building in the country, and the new stadium is the largest stadium in the country. The new building is the largest building in the country, and the new stadium is the largest stadium in the country.

Campus Classifieds - Low Cost

LUCON Starts TODAY

Feature: 1:30 - 4:10 - 6:45 - 9:25

MARLON BRANDO'S GREATEST HIT!

A Streetcar Named Desire

5 ACADEMY AWARDS

ADDED: Cartoon, Novelty, News

Agers' Key to Success

WAGY 147 First place Agers State may not boast leading scores in the Big 10 football race, but Spartan Agers are all right with the two reasons in the league. Michigan State's top scorer is the Green, ranked No. 8 in a 10.5 point average, well ahead of runner-up Ron Johnson of Minnesota who has 24.1. Bob Anderson is ninth in 10.8 average. Green leads in yards with 116 followed by the team's Harry a...

State News Sports

Night sports Editor: Chuck Richard. Address: 1000 State Avenue, February 5, 1959 - Page Five

TODAY & FRIDAY! STATE

This is the First in a new series of... International Film Presentations! Please Watch For Our Coming Attractions!

Feature Show Tonight 7:35 - 9:30

"TENSION ATTAINS A NEW DIMENSION!"

"POWERFULLY CRAFTED SUSPENSE!"

Late Show Friday 10:30 P.M.

ADULTS 70c CHILDREN 50c

"a man escaped"

STARTS SATURDAY! John Saxton

FIRST SHOW 1:00 P.M.

"The RESTLESS YEARS"

UNION Barber Shop

Special!

Open 8-5:30

Closed Sat. 12 Noon

8 Barbers - Fast Service

TOMORROW IS SUPER BARGAIN DAY!

See Two Features - All Day Preview!

"I WANT TO LIVE" and "THE PERFECT FURLOUGH"

Continuous from 1 p.m.

287 CERTIFIED LAUGHS!

Certified in audience tests by Sindlinger & Co., Inc. Research Division MOLEY PARK PENN.

104 SNOW-BOUND G.I.s PICKED HIM TO SPEND THEIR FURLOUGH IN GAY PAREE...WITH TWO DELICIOUS DAMES!

...now he's gotta make good for each and every one of them!

TONY CURTIS JANET LEIGH *The Perfect Furlough*

with KEENAN WYNN - ELAINE STRITCH - LES TREMAYNE - MARCEL DALIO - LINDA CRISTAL

TODAY and FRIDAY!

"I WANT TO LIVE" - Susan Hayward

1:00 - 3:10 - 5:20 - 7:35 - 9:50

MICHIGAN

FINAL WEEK Sale!

Scotch House

815 E. Grand River ED 7-0371

GLADMER TODAY & FRIDAY

HOUSE ON HAUNTED HILL VINCENT PRICE

EMERGO Starting Saturday

Specialty featured for this Engagement! THE THINGS FLY RIGHT INTO THE AUDIENCE!

STARRING: FRANK BOON, BEAN O'NEIL, MARTIN DONOVAN, MARY ANN MURPHY

Gigantic Tire Sale

Bud's Mobile Service

Grand River and Haslett Phone ED 7-9178

First Line Mobile Premier Nylon Tires

710x15 Tubeless White	Reg. 45.00	Now 30.25
700x15 Tubeless White	Reg. 49.30	Now 33.85
670x15 Tubeless White	Reg. 41.10	Now 27.72
670x15 Tubeless Black	Reg. 33.55	Now 22.81

First Line Mobile Deluxe Rayon "Tyrex"

670x15 Tubeless White	Reg. 27.55	Now 21.11
710x15 Tubeless White	Reg. 30.55	Now 23.30
670x15 Tubeless Black	Reg. 22.50	Now 17.43
710x15 Tube Type Black	Reg. 24.95	Now 17.28
670x15 Tube Type Black	Reg. 19.30	Now 12.85

This Offer Good Only Feb. 5-6-7th

All Tires Plus Tax And Recappable Tire

