

# ... Step Out Tonight to 'Tambika,' '59 J-Hop ...

## Michigan State News

SNOW AND COLDER  
Mostly cloudy, windy and cold... with scattered snow falling today. Westerly in northwesterly winds 10 to 15 mph diminishing slowly. High 45, low last night 1.

ON THE INSIDE  
Canadian-U.S. Summit...  
Piers Week...  
TAMMERS...  
U. S. OF MSU...

EAST LANSING, MICHIGAN—FRIDAY, FEBRUARY 6, 1959

PRICE 5 CENTS

### Top Trackmen Tangle MSU Relays Biggest Yet

**SATURDAY'S** 33th annual Michigan State Relays, scheduled to be held in Jenison Fieldhouse, promises to be one of the biggest track carnivals in the Midwest.

It seems certain that some records will be broken with the likes of Ohio State's Glenn Davis, Eastern Michigan's James Jones, Michigan's Felix Landstrom, Kansas' Kenie Shelby and Oklahoma's Dee Givens included in this year's Relays.

Both Davis and Jones appear capable of equaling or breaking meet and fieldhouse records in the high and low hurdles. Last year the Buckeye speedster set a meet mark of 39.3 in the lows. But only last week in the Michigan AAU Jones won the high and the low, capping this dual victory with dash triumph at night.

**SOONER SPRINTERS** Givens will challenge Davis in the dash event on the basis of 97.5 winning effort last year. Davis, who is primarily a 140 specialist, may find the shorter distance hard to adjust to. In any case Givens will find plenty of competition from Michigan's Tom Robinson, a British Empire Games winner, and Robinson's teammate, John Gregg.

Michigan's Landstrom, the European title holder, won the Michigan AAU pole vault title with a 14' 8" effort and has done over 15 feet in Europe. The meet record is 17' 6 1/2", set by Marquette's Ed Hoyle last year. Ironically enough, the fieldhouse mark was set by Landstrom himself at 14' 2" in 1956.



**TIM STEBER** doesn't seem too happy as he receives a bath in preparation for a Farmers' Week judging contest. Bob Rosh of Romeo is administering the hose.

### Receive Helpful Hints Farmers Complete Successful Week

Farmers' Week wound up its five-day conference today on a note of success.

To carry out the theme of "Health, Wealth, Animals and Men" meetings were held in every phase of agriculture.

In dairyman meetings pointers were given on how to improve cows and milking standards.

Twelve mineral elements are required for all good dairy cattle it was decided. Tips were given on sanitary equipment and liquid dairy feeds.

Dairy cow diseases such as leptospirosis, the second most costly disease of livestock in the U. S., were discussed. Diseases can be remedied by good herd management.

In beef meetings the Michigan Artificial Breeders' cooperative used the theme of "maintaining a position of leadership in all phases of artificial breeding."

Good pasture management was described as a means of rearing young calves.

Vegetable growers talked on the unlimited field of commercial vegetable farming. Encouragement was given on consumption trends, farm management, contract farming, and scientific development.

Crop rotation for specialization of potato production and ways to plant beans for a better yield came out at other crop meetings.

American farmers pay out about one billion dollars annually by crop losses due to soil parasites. Chemicals, fertilizers and soil tests were suggested remedies.

Work through science was described as the best way to control major plant disease problems. Drainage was also discussed.

Dairy scientists reported that penicillin was becoming one of the best means of controlling diseases along with new vaccines.

Foresters gathered for Farmers' Week said that small private timber lands comprise about 50 percent of the total forest land in the U. S. They urge better forest management.

Christmas tree growers were encouraged to grade their own trees and keep the bad ones off the market to cut down prices and insure a better consumer acceptance.

Beekeepers were encouraged to start bee farms in the spring rather than winter. A bee's health is of great importance since poor health and old age can mean a poor colony.

### Ernie Shelby Will Defend Titles in Relays

**SHELBY, KANSAS'** 26-foot broad jumper, will be on hand Saturday afternoon to defend the title he won last year. While not approaching the magic 26-foot-plus mark, the lithe Kansan gave Spartan spectators a 24' 4 1/2" performance. This year the Jayhawk athlete could break the meet record of 24' 9 1/2", set by Wayne's Lorenzo Wright in 1948. The fieldhouse record stands at 25' 4 1/2", which Michigan State's great Fred Johnson set in 1948 also.

### At Counseling Center Tests Offer Clues to Future

**By SUZETTE RAMSEY**

How do you feel about Bolsheviks or people with gold teeth? Does "skribis" mean "subscribed" or "wrote"? Your answers to these questions may give some clues to your future.

These are typical questions in two of the tests, one interest and the other foreign language aptitude, offered by the Counseling Center. The purpose of all the varieties of tests is to help the student learn more about himself; so the type of test taken depends upon what the student wants to learn.

An interview with a counselor must first be arranged. Together the two decide which tests will be most helpful. The interest tests are often given when the student wants help on career planning.

Most tests fall into one of five types. The **Self-Concept** tests, which help determine a student's aptitude. **Achievement** Tests try to measure how much one has already learned in contrast to the mental ability tests which attempt to measure capability.

The third type is **Vocational Interest** Tests which try to reflect vocational areas in which the student's interests are highest and lowest.

**Personality** Tests show how personality characteristics compare with other people's. These tests are used in most kinds of counseling problems for personal and social adjustment.

The last type of test is **Special Aptitude**. Aptitude is essentially the capability to learn to do a certain type of thing. The most common in this area are mechanical and clerical aptitude tests.

There are about 400 different tests in the sample test file. Fifty of these are most commonly used. Of the different interest tests, one has to be scored in Milwaukee, where special equipment is available.

### African Night Planned

**African Night** will be held in 31 Union tonight at 8.

Dr. Frederic Wickert of psychology department will lecture on social and economic development of the continent and show slides.

### Sales Tax Boost Halted

#### Blood Drive Sets Week of Signups

**'Don't Be a Dud. It's Only Blood'**  
Say Annual Event's Sponsors

The annual winter term blood drive, sponsored by A.W.S. and Men's Activities Council, will be initiated next week, according to co-chairmen John Steiler, Lansing junior, and Gloria Donati, Mount Vernon, N.Y., junior.

A week of signups for the drive with the theme "Don't Be a Dud—It's Only Blood" will begin next Monday and continue through Friday.

From Feb. 16-20, donations will be made in the Tower room of the Union. All interested persons may sign up in the Union Concourse from 10 a.m. to 4 p.m. any day next week.

The donations aren't limited to MSU students. The faculty, staff and East Lansing residents are also invited to give their share.

Donors wishing to donate blood should fill out a physical card stating the time and day the donation will be made.

Advanced registration is encouraged in order to provide an even flow of donors throughout the day and eliminate waiting lines at the blood center. It was necessary, however, to register.

In last winter term's drive first living units reached 199 percent and a total of 1,544 pints were donated. The record at MSU is 2,146 pints.

Approximately 45 minutes is required for the entire process of giving blood. A physical examination is given to each donor and coffee and doughnuts will be served following the donation.

The Lansing Red Cross Regional Blood Center is in charge of the blood donations.

### Housemother Hit by Car

Miss Pearl Gordon, housemother at the Alpha Epsilon Phi sorority house, was hit by a car Thursday afternoon on Grand River just west of the Peoples Church.

Miss Gordon was crossing a driveway when a car backed into her. The accident occurred around 1:30 p.m.

"Resting comfortably" at Sparrow Hospital, officials said she is suffering from bruises and a possible leg fracture.

She has been with the A. E. Phi since the purchase of the house in 1954.

### Fund Boost Asked

**WASHINGTON—Dr. Werneher Braun**, one of the Army's chief missile scientists, pleaded Thursday for 140 million dollars more than allotted to build a rocket engine with 1 1/2 million pounds of thrust.

### U.S. Missiles Gaining

**WASHINGTON—A top defense department official** said Thursday "I believe we are overtaking" the Russians in the missile-space race. Dr. Herbert Gold, the Senate Armed Services committee's Russian expert, said the United States is developing a missile engine planned to have more thrust than those of the Soviet Union.

### Moonshiners Beware!

**MOSCOW—Nikita Khrushchev** Thursday ordered a war on Soviet moonshiners. The Soviet premier and party chief told the party central committee and government cabinets of the 15 union republics to get measures under way to move against "the abuse of spirituous liquors."

### Williams Dislikes Proposal

#### Trust Fund Use Opposition Dims

**By THE ASSOCIATED PRESS**

Republicans failed Thursday to sell Gov. Williams on allowing a four cent sales tax proposition to go on the April 6 Michigan general election ballot.

However, the Governor's Democratic House leaders not altogether close the door on the possibility in a 10-minute conference in the executive office.

They set a date to reconvene at 10:30 a.m. Thursday on the condition that the GOP would take a special stand on a tax program in the event the sales tax proposition went to a vote and lost.

Meanwhile resistance was apparently weakening in the Governor's proposal for mortgaging the Veterans Trust Fund at an answer to the state's short term cash emergency.

Adding a penny to the state tax has emerged as the official Republican alternative in accepting the state income tax favored by Williams. Along with a new tax on corporation profits as a solution to the long run fiscal problem.

Governor Williams proposed to shift about 22 million dollars in the fund's supplies to the University of Michigan and MSU for use as collateral in borrowing. Another 12 million dollars in securities would go to the public school employees retirement fund releasing more cash for state school aid payments.

In another move to solve off state bankruptcy, the House Democrats proposed to boost the ceiling on state debt from the present \$214,000 to 54 million dollars.

After the long conflict, House Speaker Don Peary (R-Buchanan) said he thought there was little chance the Republicans would counter the 19 Democratic votes needed to put the sales tax ballot proposition through the House, assuming GOP lines hold firm.

Legislators reported the tempo of protests against the veterans fund proposal was tapering off.

### Housemother Hit by Car

Miss Pearl Gordon, housemother at the Alpha Epsilon Phi sorority house, was hit by a car Thursday afternoon on Grand River just west of the Peoples Church.

Miss Gordon was crossing a driveway when a car backed into her. The accident occurred around 1:30 p.m.

"Resting comfortably" at Sparrow Hospital, officials said she is suffering from bruises and a possible leg fracture.

She has been with the A. E. Phi since the purchase of the house in 1954.

### Gov. Offers \$20 Million Plan For MSU Future

Michigan State University will receive over \$20 million for building purposes if Gov. Gordon Williams' capital outlay bonding program is accepted by the legislature.

Gov. Williams' program, listing 164 projects with costs of over \$154 million, was put in the legislature Wednesday.

The Governor includes six projects on the MSU program. He submitted a bonding plan which would provide \$5 million for a general classroom and office building, \$4 million for a mechanical engineering building, \$3,132,000 for an addition to the chemistry building, \$2 million for a phytotron and \$2 for a research reactor.

Last year a similar plan made by Williams was rejected. "One purpose of a bond financing program," said Williams, "is to avoid another moratorium on needed capital facilities without disturbing the 1958-60 budget situation. Further, a state building program at this time would provide an economic stimulus which would pump purchasing power into many distressed areas."

The first program, "Love is Not Enough," will feature Dr. Bruno Bettelheim.



**ERNIE SHELBY** (left) and **DEE GIVENS** will defend titles in Relays.

### FARMERS' WEEK EVENTS

**TODAY**

9:30 Michigan Much Farmers' Association—Michigan Union Growers' Association  
Music Building Auditorium

10:00 Resource Development—St. Lawrence Seaway  
Lincoln Room A and B, Kellogg Center

Michigan State Grange  
Room 31, Union

Botany and Plant Pathology  
Music Building Auditorium

10:15 American Dairy Association of Michigan  
Kellogg Center Auditorium

11:15 Township and County Planning and Zoning  
Lincoln Room A and B, Kellogg Center

Read Daily by MSU's 5,000 Students and Faculty

Vol. 50, No. 128 Friday, February 6, 1959 Page Two

Farmers' Week Visitors Lauded

MSU HARBOUR AGAIN extended its hand and welcomed visitors to the campus...

Although the scope of MSU's public service has broadened immensely from that 44 years ago...

Founded on an agricultural basis, the school has passed through phases of growth...

Throughout this rapid growth, interest in agriculture has remained. The university has not forgotten those concerns that first put it "in business."

To farmers, this annual week-long affair is more than a vacation from daily chores...

Michigan State's College of Agriculture is known across the nation as one of the finest...

In the College of Agriculture, new techniques for producing better crops are found...

THE AG SCHOOL is no longer considered top on campus. Not in prestige or enrollment does it rank first...

Farmers' Week serves not only to inform the "tillers of the soil" concerning their own vocation...

Displays of other schools on campus bring the farmer a satisfaction to take home with him...

But it's never been forgotten on this campus that production of food and livestock remain as the most vital necessity in the U.S.

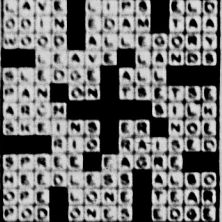
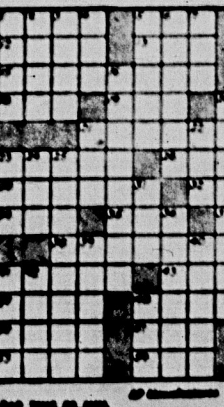
Our hats are off to the 50,000 people who now take back with them fresh knowledge of research...

Thanks to AUSA

OUR THANKS and commendations go to Student Congress for their assistance in bringing back the "Star Spangled Banner" before home basketball games...

Crossword Puzzle

- Across: 1. Soviet news agency, 2. Drink, 3. Achievement, 4. Crime scene, 5. The method wife, 6. Then character, 7. Publishing without authority, 8. Sign, 9. Goddess of mischief, 10. Boat, 11. Bound with fabric, 12. Hygiene activity, 13. Cockatoo, 14. Taper, 15. To scratch, 16. Revolve, 17. Boiled leaves of young plants, 18. Converged, 19. Sick, 20. So American mountains, 21. Kerosene agents, 22. Devil, 23. Turn right, 24. Frequently, 25. High mountains, 26. Ways of access, 27. Archipel, 28. Same as, 29. Passenger steamers, 30. Saucy collog, 31. Affirmative, 32. Equal, 33. Largest vegetable organism, 34. Grit, 35. Revenue raised by levies, 36. Performs a certain chemical analysis, 37. Ass, 38. Tooth of a gear wheel, 39. Take up weapons, 40. Fish eggs, 41. Tires, 42. Chemical suffix, 43. Feminine ending, 44. Old times poet, 45. Type measure, 46. Ambassador, 47. Towers, 48. City named, 49. River barriers, 50. Charles Lamb, 51. Bohemian mending, 52. Postcard, 53. Former ruler, 54. Dormitory, 55. Unseen



- Solution of Yesterday's Puzzle: Down: 1. Polynesian paper, 2. Came to rest, 3. ARMY along, 4. Huge wave, 5. Burning, 6. Passenger steamers, 7. Urge on, 8. Small wild oven, 9. Took part in a contest, 10. Largest vegetable organism, 11. Grit, 12. Revenue raised by levies, 13. Performs a certain chemical analysis, 14. Ass, 15. Tooth of a gear wheel, 16. Take up weapons, 17. Fish eggs, 18. Tires, 19. Chemical suffix, 20. Feminine ending, 21. Old times poet, 22. Type measure, 23. Ambassador, 24. Towers, 25. City named, 26. River barriers, 27. Charles Lamb, 28. Bohemian mending, 29. Postcard, 30. Former ruler, 31. Dormitory, 32. Unseen



Criticize S'News GOP, Dems Agree

To the Editor: Last Wednesday evening Clark Brock, member of the State Board of Agriculture, spoke to the Young Republicans on the topic "Politics and Control of a State University"...

Michigan State News 201 Student Services Building. Published on days, every Monday through Friday...

Film Fare 'Streetcar' Still Ranks With Top Productions

Tennessee Williams' Pulitzer Prize winning play, "A Streetcar Named Desire," was first adapted for the screen and released in 1951. Shortly thereafter, it began a collection of film awards that few films can match even today.

In addition to being a well honored play, "Streetcar" has as its title a rather provocative phrase. At the outset, we see Vivien Leigh, as Blanche Du Bois, arriving at her sister's French Quarter home in New Orleans aboard a trolley with the improbable destination name 'Desire' displayed in front.

Frenchman Robert Bresson's "A Man Escaped" is the first in a series of international film releases which will play the State Theater in the next six weeks. If the program is successful, the series will continue.



INFORMATION: TODAY INTERNATIONAL CLUB AND AFRICAN CLUB, CATHOLIC STUDENT ORGANIZATION, LIBERALS, SUNDAY RADIO WORKSHOP, FELLOWSHIP OF BELIEVERS, WENLEY FORUM, CATHOLIC STUDENT ORGANIZATION.

CAMPUS CLASSIFIEDS ED 2-1311 EXT 2615 DEADLINE: 1 p.m. DAY BEFORE PUBLICATION FOR TUES., WED., THURS., AND FRI. EDITIONS. MON. EDITION DEADLINE: 1 p.m. FRI.

CLASSIFIED RATES minimum 15 words: 1 day 50c, 2 days \$1.00, 3 days \$1.50, 4 days \$2.00, 5 days \$2.50.

THOMPSON'S FEBRUARY SALE: DIAMONDS AND JEWELRY, WATCHES, GLOVES, HATS, COATS, SUITS.

FOR SALE: 1956 FORD Falcon, 1957 PLYMOUTH, 1957 CADILLAC, 1958 VOLKSWAGEN.

EMPLOYMENT: EXPERIENCED SECRETARY, ARTIST, TEACHER, NURSE, SOCIAL WORKER.

HOUSING: EAST LANSING FLORIS, WEST LANSING, HARTFORD LAUNDRY.

PERSONAL: JACKIE WILLIAMS WELCOME TO Michigan State University, KENNY DAVIS ORCHESTRA.

REAL ESTATE: ATTENTION FRATERNITIES AND SOCIETIES, THE TICE HOUSE, TRANSPORTATION.

FOR SALE: THOMPSON'S FEBRUARY SALE.

FOR SALE: 1956 FORD Falcon, 1957 PLYMOUTH, 1957 CADILLAC.

EMPLOYMENT: EXPERIENCED SECRETARY, ARTIST, TEACHER, NURSE.

HOUSING: EAST LANSING FLORIS, WEST LANSING, HARTFORD LAUNDRY.

PERSONAL: JACKIE WILLIAMS WELCOME TO Michigan State University, KENNY DAVIS ORCHESTRA.

REAL ESTATE: ATTENTION FRATERNITIES AND SOCIETIES, THE TICE HOUSE.

TRANSPORTATION: WANTED: RIDE FROM Park Lane Road, Bath, to MSU arriving 8:30 leaving 5 a.m.

FOR SALE: THOMPSON'S FEBRUARY SALE.

FOR SALE: 1956 FORD Falcon, 1957 PLYMOUTH, 1957 CADILLAC.

EMPLOYMENT: EXPERIENCED SECRETARY, ARTIST, TEACHER, NURSE.

HOUSING: EAST LANSING FLORIS, WEST LANSING, HARTFORD LAUNDRY.

PERSONAL: JACKIE WILLIAMS WELCOME TO Michigan State University, KENNY DAVIS ORCHESTRA.

REAL ESTATE: ATTENTION FRATERNITIES AND SOCIETIES, THE TICE HOUSE.

TRANSPORTATION: WANTED: RIDE FROM Park Lane Road, Bath, to MSU arriving 8:30 leaving 5 a.m.

FOR SALE: THOMPSON'S FEBRUARY SALE.

FOR SALE: 1956 FORD Falcon, 1957 PLYMOUTH, 1957 CADILLAC.

EMPLOYMENT: EXPERIENCED SECRETARY, ARTIST, TEACHER, NURSE.

HOUSING: EAST LANSING FLORIS, WEST LANSING, HARTFORD LAUNDRY.

PERSONAL: JACKIE WILLIAMS WELCOME TO Michigan State University, KENNY DAVIS ORCHESTRA.

REAL ESTATE: ATTENTION FRATERNITIES AND SOCIETIES, THE TICE HOUSE.

TRANSPORTATION: WANTED: RIDE FROM Park Lane Road, Bath, to MSU arriving 8:30 leaving 5 a.m.

## Canadian-American Seminars Planned

Eleven speakers, including one MSU professor and ten visiting guests, will participate in the 1959 Canadian-American Seminars, this month, March and April, sponsored for the third consecutive year by MSU.

The first of three seminars in the series is set for Monday at 8 p.m. in the Physics-Math Conference Room.

Speaker's topic is "The St. Lawrence: A New Dimension in Canadian-American Relations." Dr. John Macdonald, professor of geology and transportation administration here, will chair the three-member group. The included will be H. C. Duhal, Milwaukee's municipal port director, and Gerald Brown, Canadian Consul General in Chicago.

"Canadian-American Relations 1959: The New Awareness" will theme the second seminar March 9. Speakers at the seminar will be Prof. Ed. of Michigan, president of the Canadian Institute of International Affairs; Frank Coffin, of the U. S. House of Representatives Foreign Affairs Committee; and Paul Martin, member of the Canadian Parliament and former minister of national health and welfare.

Frank Scott, professor of constitutional law at McGill University, Montreal, has been invited as chairman of the final seminar set for April 13.

The "ends and means" of Canadian and American higher education will be discussed at the third seminar. Other speakers listed are James Corry, Queen's University, Kingston; Lawrence Dennis, Pennsylvania University; Jean-Charles Fauriol, Université Laval, Quebec; and Donald Love, secretary, Berlin College.

### Professor to Speak

Dr. Carl W. Hall, professor of agricultural engineering, will speak on "Agriculture in the World Union" as part of Farmers' Week activities. The address will be broadcast over KEAR today at 1 p.m.

## Casual Styles Highlighted In Family Fashion Show

Casual and easy-to-wear-for clothes highlighted a fashion show Thursday, climaxing of homemakers' activities during Farmers' Week.

The show entitled "Family Fashion Fair" was presented by the textiles, clothing, and related arts department. All clothing except that made by home economics students was provided by the I. W. Knapp Co. of Lansing.

Casual clothes for the whole family were featured in a scene entitled "Have Clothes, Will Travel." Many of the clothes were made of new miracle fabrics that wash easily and are wrinkle resistant.

Co-ordinated playclothes highlighted the "Big Top Activities" scene. Bathing suits with matching tops, towels and casual dresses and suits were shown. Many of the items and tops were reversible and so provided double fashion. Wrap-around skirts were featured throughout the show.

Clothing students in home economics showed some of their original designs in a scene called "The Ribbon Winners." Several wool dresses and suits were shown along with cocktail dresses in floral prints and bright plain colors.

Models for the show included Nancy Anderson, fashion senior; Joy Agnes, Grace Poole, junior; Mary Ellen Hill, Lansing junior; Jane Ringham, Greenville, Fla. sophomore; Warren Holt, Farmington junior; Pat Bergman, Kalamazoo sophomore; Marlene Butler, Grand senior; Nancy Campbell, Marshall senior; Jean Cary, Lansing sophomore; Linda Castello, Ingham junior; Diana Lutz, Kalamazoo sophomore; Loretta Banforth, Paradise sophomore; Bobbi Burke, Ingham sophomore; Madeline Eber, Berlin Harbor junior; Cordey Campbell, Lansing senior; Judy Evans, Hill, Burtchard freshman; Carol Gromel, Ingham sophomore; Betty Hopkins, Bedford, Va. junior; Nancy Johnson, Farmington senior; Marlene Kuhl, Chelsea sophomore; Carol Lanning, Westphalia sophomore; Judith Lehtinen, West Branch sophomore; Inanna Lundquist, Grand Rapids sophomore; Carole Waldstrom, Burtchard sophomore; Rosemary Meyer, Lansing junior; Marlene Mower, Grand Rapids sophomore; Sandra Michaels, Vincennes junior; Larry Williams, Chicago, Ill. sophomore; Beverly Parker, Boston, Mass. sophomore; Nancy Peterson, East Lansing senior; Bill Seymour, Ingham junior; Inanna Smith, Detroit sophomore; James Ross, Battle Creek junior; Warren Platt, Farmington Park junior; Richard Schiff, Grand Rapids senior; Roger Sherman, Wixom, Ill. sophomore; Robert Wilson, Allen Park freshman.



FFA STUDENTS visit Virginia Weiler's "Homemakers' Hour" at the WKAR-TV radio studios Wednesday. Included are Farmers' Week guests (back, l-r) Jim Ritter, Danny Guizar and Delbert John, all from Red Axe.

## Milstein, Violinist, to Appear

When Nathan Milstein will appear in the MSU Auditorium Tuesday, he will play one of the greatest violinists left in posterity by the most famous of all violin-makers, Antonius Stradivarius.

The concert is a feature of the university's Lecture-Concert Series "A" and will begin at 8:15 p.m.

When Milstein made his first trip to the U.S. in 1929 he brought with him a European reputation second to none. In his debut with the Philadelphia Orchestra and the New York Philharmonic Symphony the violinist established himself as a fabulous technician and a supremely sensitive interpreter.

### the EAGLE CAFE

DOWNTOWN LANSING  
TRY OUR CHEF'S SPECIAL  
STRIP SIRLOIN STEAK  
1/2 lb LEAN MEAT — \$1.35  
Open Until 1:00 a.m. Convenient City Parking



HUNTING A REAL "ENGINEER'S COMPANY"?  
Looking for a company where research and development are primary objectives? Where a big share of earnings goes into new research equipment? Where one out of eight employees is an engineer? Where professional matters get special corporate attention from engineers in top management? Our representative will be in your PLAZAVIEW OFFICE  
FEBRUARY 3-10  
VOUGHT AIRCRAFT  
INDIANAPOLIS, INDIANA, U.S.A.

**Darling!**  
Of Course  
Louis Does My  
Laundry.

Free Parking in The Rear

**Louis**  
short laundry • dry cleaning  
service from new  
student services bldg

**J-Hoppers**  
— Special —  
**CORAL GABLES**  
**IL FORNO ROOM**  
1 Mile East of MSU  
Open This Weekend ONLY  
TUN 3 A.M. Both Nites!

# This Is IT-Sales End TODAY

# WOLVERINE

## \$7.00

Union — 1-5 p.m.

Wolverine Office — All Day Long  
344 Student Services Building

# Attend Church This Sunday

## EAST LANSING CHURCHES

<h3>MARTIN LUTHER CHAPEL</h3> <p>SUNDAY BROADCAST</p> <p>Morning Worship 10:00 and 11:15 (Miscellaneous)</p> <p>905 Abbott Road Chapel Bldg. 2-9710</p> <p>9:30 Bible Study</p> <p>Paul Cuppen</p> <p>Home Bible Program 8 P.M.</p> <p>Vespers 6:15 P.M.</p> <p>Station Pastor: Rev. Donald Gilman</p> <p>905 Main Ave. East Lansing, Michigan</p> <p>Parsonage No. 415 2-2362</p>	<h3>UNIVERSITY LUTHERAN CHURCH AND STUDENT CENTER</h3> <p>(National Lutheran Council) Division of Ann Arbor 1700 North State St. (at North Hall) BX 1-2512 or BX 1-2735</p> <p>SUNDAY WORSHIP</p> <p>The Service: 9:00, 10:15, and 11:30</p> <p>Morning Service Sermon: Taylor</p> <p>"God's Mercy - Man's Faith" Nativity</p> <p>Vespers: 5:00 P.M.</p> <p>Sermon: Taylor</p> <p>"Now Sing the New"</p> <p>Students and Faculty Welcome</p>	<h3>PEOPLES CHURCH EAST LANSING</h3> <p>Interdenominational 302 West Grand River at Michigan REV. U. BRANDS TULLI, Pastor</p> <p>SUNDAY SERVICE</p> <p>Sermon: Taylor</p> <p>"GIVE US THIS DAY"</p> <p>by Rev. U. Brands Tull</p> <p>Church School</p> <p>9:30 A.M. 11:00 A.M.</p> <p>Club room through high school age</p>	<h3>CHRISTIAN STUDENT FOUNDATION</h3> <p>124 W. Grand River Rev. Joseph Foster, Minister</p> <p>10:00 RESIDENT BOUND YAMER at College Home</p> <p>Topic: "Introduction to 'MORNING IN THE MOUNTAINS'"</p> <p>9:30 A. 11:00 Worship Service at People's Church</p> <p>Vespers 1:30 Campus Vespers</p> <p>RAIS REUNIONS SUNDAY Three former students will present a program on the Middle Sea. We will meet Harold Nelson from Jordan, Tang Shu-cheng from Hong Kong, and Vera Adolfsen from Denmark.</p> <p>1:30 P.M. 2:30 P.M.</p> <p>Everyone Welcome</p>	<h3>FIRST CHURCH OF CHRIST SCIENTIST</h3> <p>Branch of The Mother Church The First Church of Christ Scientist, 600 East 100 E. Grand Street</p> <p>Church Services: 11 A.M. Sunday School: 11 A.M.</p> <p>Subject: "SCEPTER"</p> <p>Reading Room 100 W. Grand River</p> <p>Mon., Tues., Thurs. 9 A.M. - 9 P.M. and 1 P.M. - 9 P.M.</p> <p>Wed., Friday 9 A.M. - 9 P.M.</p> <p>Saturday 9 A.M. - 1 P.M.</p> <p>All are welcome to attend Church Services and visit and use the Reading Room</p>		
<h3>ST. JOHN CHURCH &amp; CATHOLIC STUDENT CENTER</h3> <p>P.O. Box 252069 St. P. 2155 201 S.E. 6th Avenue</p> <p>Sunday Masses 7:00 - 9:00 - 10:30 - 11:30 (Club service at 9:00 A.M. 10:00 Masses)</p> <p>Daily Masses 9:00 &amp; 9:30 A.M. Confessions Daily 9:00 &amp; 11:00 A.M. 8:00 P.M. (after Sunday)</p> <p>Saturday 7:00 &amp; 1:00-2:00 P.M.</p> <p>CATHOLIC STUDENT ORGANIZATION MEETS SUNDAY 1:00 P.M. Phone BB 1-2110</p>	<h3>METHODIST CHURCH OF EAST LANSING and WESLEY FOUNDATION</h3> <p>Wesley M. Tarrant George L. Jordan Ministers</p> <p>SUNDAY WORSHIP</p> <p>9:00 A.M. 11:00 A.M. 10:00 A.M. 1:00 P.M. 1:00 P.M. 5:00 P.M.</p> <p>SUNDAY SCHOOL 9:00 A.M. 11:00 A.M. 1:00 P.M. 3:00 P.M.</p> <p>10:10 A.M. All Ages and 1:00 P.M. 2:00 P.M.</p>	<h3>EDGEWOOD PEOPLES CHURCH</h3> <p>Interdenominational 204 N. Saginaw Road 13 blocks north of Grand Street</p> <p>Rev. Truman A. Morrison, Minister Rev. Robinson A. Lapp, Minister</p> <p>9:30 A.M. &amp; 11:00 A.M.</p> <p>"THE SHINE DIMBLY SHINE" by Rev. Truman A. Morrison</p> <p>Church School at 9:00 and 11:00 A.M. Club room through Junior High School</p> <p>Devoter Club 1:00 - 3:00 P.M. High School Fellowship 1 to 3 P.M.</p>	<h3>EASTMINSTER PRESBYTERIAN CHURCH</h3> <p>Rev. Robert L. Murrell, Minister 600 Division Street</p> <p>SUNDAY PROGRAM 9:30 A.M. Church School and Adult Study</p> <p>10:30 A.M. Worship and parting Church School for children 9:30-10:30 and under.</p> <p>SERMON "CHILDREN OF LIGHT"</p> <p>Lead Minister, Rev. Jack Harrison Presbyterian University Pastor</p> <p>STUDENTS WELCOME</p>	<h3>EAST LANSING TRINITY CHURCH</h3> <p>100 Spruce Avenue</p> <p>A Bible Teaching Ministry in the Center of East Lansing</p> <p>Rev. G. Eugene Williams, Pastor</p> <p>WORSHIP SERVICE 11:00 A.M. "WHILE SAINTS ARE ASLEEP"</p> <p>9:00 A.M. SUNDAY SCHOOL AND A MEET FOR UNIVERSITY STUDENTS</p> <p>9:00 P.M. TRINITY COLLEGIATE FOLLOWERSHIP</p> <p>All University Students Welcome 100 S.W. Wednesday Evening Service</p>		
<h3>ALL SAINTS EPISCOPAL CHURCH</h3> <p>220 Abbott Road - SD 2-1112 Rev. John P. Poirer - Chaplain</p> <p>SUNDAY SERVICES</p> <p>9:00 A.M. Holy Communion</p> <p>9:30 A.M. Family Service and Choir School</p> <p>10:45 A.M. Morning Prayer of Holy Communion and Sermons</p> <p>CATERING CLUB 9:00 P.M. Sunday</p> <p>SERVICES FOR CHILDREN Department from 9:00 A.M. to 11:00 A.M. in addition to Main Parking Lot</p> <p>10:45 A.M. Service 11:00 A.M. Mass and Parking Lot</p> <p>10:45 A.M. Mass and Parking Lot</p> <p>Reference to some points after church</p>	<h3>SOUTH BAPTIST CHURCH</h3> <p>South Washington at State Street Drive Donald P. Dupont, D.D. Donald A. Bell</p> <p>SUNDAY BIBLE SCHOOL 9:00 A.M. Bible School Open, College Class taught by Dr. David Harrison, National Secretary 9:00 P.M.</p> <p>9:00 A.M. SERMON "GOD'S PLAN FOR YOU" 1:00 P.M. SERMON "GIBBY AND HIS CHRISTIAN SPIRIT"</p> <p>9:00 P.M. Adult Church Fellowship PANEL OF DOCTORS - OPPORTUNITIES FOR WITNESS</p> <p>Free bus service leaving 8:00 and 7:00 P.M. and 9:00 P.M. Directed through campus. For further information call TV 2-5555</p>	<h3>FIRST WESLEYAN METHODIST CHURCH</h3> <p>1000 Spruce Ave. at E. Michigan 100 Spruce &amp; Michigan - Bldg. 2</p> <p>Sunday School - 9:00 A.M. Morning Service - 10:30 A.M. Evening Service - 8:00 P.M. Worship Service - 1:30 P.M.</p> <p>SPECIAL INVITATION: Unmarried students in young people's Sunday School class taught by Dr. Gordon Clark, a Michigan State Education Consultant</p>	<h3>EAST LANSING UNITY CENTER</h3> <p>210 W. Grand River DORIS G. HALL, Pastor</p> <p>BURNING BUSH AT 11 A.M. "SERIAL LIFE OF GARY" Sunday School 11 A.M.</p> <p>DORIS G. HALL, Organist Worship Meeting 9:00 A.M. - Study Class TEST - "HOW I GUESS YOU" Associated with Unity School of Christianity, 407 S. Grand, St. Louis, Mo.</p>	<h3>FIRST CHRISTIAN CHURCH</h3> <p>(Disciples of Christ) Burton and Park Streets 1 1/2 blocks South of Sparten Hospital</p> <p>Church School 9:30 A.M. Morning Service 10:30 A.M. 9:30 P.M. C.T.S. (at St. &amp; College age)</p> <p>6:30 P.M. 8:00 P.M.</p>	<h3>VISIT THE UNIVERSITY CHAPEL</h3> <p>First Presbyterian Church 100 East of Chestnut (Behind Old Law)</p> <p>Rev. William C. Egan, Minister David L. Frapp, Pastor Emeritus The People's Church of Christian Education</p> <p>10:00 and 11:30 Two Services of Holy Communion 10:00 A.M. 11:30 A.M. 1:00 P.M. Evening Service of Holy Communion 1:00 P.M. Sunday Evening Service of Holy Communion 1:00 P.M. Sunday Evening Service of Holy Communion 1:00 P.M. Sunday Evening Service of Holy Communion 1:00 P.M. Sunday Evening Service of Holy Communion 1:00 P.M. Sunday Evening Service of Holy Communion 1:00 P.M. Sunday Evening Service of Holy Communion 1:00 P.M. Sunday Evening Service of Holy Communion</p>	<h3>CENTRAL METHODIST CHURCH</h3> <p>Corner of Chestnut Worship Services at 10:00 and 11:30</p> <p>SERMON: "LET'S JOIN THE 'SUNDAY RACE'"</p> <p>Paul Morrison preaching Sunday School at 9:00 Young Adults Sunday 1:00 Center is a Friendly Lounge</p>
<h3>OLIVET BAPTIST CHURCH</h3> <p>211 S. Michigan Rev. William Dornham, Pastor</p> <p>SUNDAY SERVICES</p> <p>9:00 A.M. 11:00 A.M. 11:00 A.M. 1:00 P.M. 1:00 P.M. 3:00 P.M. 3:00 P.M. 5:00 P.M.</p> <p>Worship Services: 9:00 A.M., 11:00 A.M., 1:00 P.M., 3:00 P.M., 5:00 P.M. Sunday School: 9:00 A.M. - 10:00 A.M. 11:00 A.M. - 11:45 A.M. 1:00 P.M. - 2:00 P.M. 3:00 P.M. - 4:00 P.M. 5:00 P.M. - 6:00 P.M.</p> <p>Worship Services: 9:00 A.M., 11:00 A.M., 1:00 P.M., 3:00 P.M., 5:00 P.M. Sunday School: 9:00 A.M. - 10:00 A.M. 11:00 A.M. - 11:45 A.M. 1:00 P.M. - 2:00 P.M. 3:00 P.M. - 4:00 P.M. 5:00 P.M. - 6:00 P.M.</p> <p>Worship Services: 9:00 A.M., 11:00 A.M., 1:00 P.M., 3:00 P.M., 5:00 P.M. Sunday School: 9:00 A.M. - 10:00 A.M. 11:00 A.M. - 11:45 A.M. 1:00 P.M. - 2:00 P.M. 3:00 P.M. - 4:00 P.M. 5:00 P.M. - 6:00 P.M.</p>	<h3>INTER-CITY BIBLE CHURCH</h3> <p>207 S. Michigan Independent Fundamental Pre-Millennial REV. G. J. TUNSTRA, PASTOR</p> <p>9:00 A.M. Sunday Bible School 11:00 A.M. Morning Service 1:00 P.M. Church School 7:00 P.M. Evening Service</p> <p>(History Re-organized For Better Service) For Transportation call TV 2-1702</p>	<h3>FIRST PRESBYTERIAN CHURCH</h3> <p>100 East of Chestnut (Behind Old Law)</p> <p>Rev. William C. Egan, Minister David L. Frapp, Pastor Emeritus The People's Church of Christian Education</p> <p>10:00 and 11:30 Two Services of Holy Communion 10:00 A.M. 11:30 A.M. 1:00 P.M. Evening Service of Holy Communion 1:00 P.M. Sunday Evening Service of Holy Communion 1:00 P.M. Sunday Evening Service of Holy Communion 1:00 P.M. Sunday Evening Service of Holy Communion 1:00 P.M. Sunday Evening Service of Holy Communion 1:00 P.M. Sunday Evening Service of Holy Communion 1:00 P.M. Sunday Evening Service of Holy Communion</p>	<h3>CENTRAL METHODIST CHURCH</h3> <p>Corner of Chestnut Worship Services at 10:00 and 11:30</p> <p>SERMON: "LET'S JOIN THE 'SUNDAY RACE'"</p> <p>Paul Morrison preaching Sunday School at 9:00 Young Adults Sunday 1:00 Center is a Friendly Lounge</p>			
<h3>FIRST CHRISTIAN REFORMED CHURCH</h3> <p>600 Michigan St. Rev. John W. Graham, Pastor</p> <p>Sunday Service 10 A.M. Sunday School 1 P.M.</p> <p>Worship Services: 10 A.M., 1 P.M. Sunday School: 1 P.M.</p>	<h3>LANSMING CENTRAL FREE METHODIST CHURCH</h3> <p>Washington at Jackson</p> <p>Morning Service - 9 A.M. Evening Service - 7:00 P.M. Worship Service - 7:00 P.M.</p> <p>Prayer Meeting Wed. Evening 7:30 P.M. "The Church of the Light and Life" The Church of the Light and Life</p>	<h3>UNIVERSALIST UNITARIAN CHURCH</h3> <p>211 S. Michigan at Project 6 blocks South of Sparten Bus</p> <p>Sunday Service 11:00 A.M. Church School and Nursery Adult Fellowship at 1:30 P.M.</p> <p>on Campus Admission of Congregants: Liberal Sun 7:00 - 9:00 P.M. 10:00 A.M. Rev. Gordon L. Egan, Minister Phone - TV 2-5555 (TV 2-5555)</p>	<h3>OKEMOS BAPTIST CHURCH</h3> <p>NEAR THE CAMPUS Rev. Edward Johnson, Pastor Service 10:00</p> <p>Sunday School 10:00 A.M. Church 11:00 A.M. Young People 6:30 P.M. Nursery 7:30 P.M.</p> <p>Worship Services: 10:00 A.M., 11:00 A.M., 6:30 P.M., 7:30 P.M.</p>	<h3>BETHANY BAPTIST CHURCH</h3> <p>120 E. Pennsylvania Street Lansing</p> <p>Worship Services: 10:00 A.M., 11:30 A.M., 7:00 P.M. Sunday School: 10:00 A.M. - 11:30 A.M. 7:00 P.M.</p> <p>For M. L. M. M. M. Attributed with The Northern Baptist Conference Maple Conference For Transportation call 211-5125</p>		



**Miss MSU To Reign At J-Hop**

Miss MSU of 1959, sponsored by Blue Key, will be crowned and crowned at 1:30 Friday night, during intermission at the J-Hop in the Auditorium. Last year's Miss MSU, Denny Donmyer, Birmingham Junior, will present the crown to the new queen.

The seven finalists for the title are Holly Arnel, Massena, N.Y.; Junior, Doria Arnold, Poland, Ohio, freshman; at Borgman, Kalamazoo sophomore; Joan Cary, Lansing sophomore; Margie Robinson, Kalamazoo sophomore; Joy Teuch, East Lansing Junior; and Diane Filkins, Arlington, Va., sophomore.

As Miss MSU, the winner will be the official representative of the university at legislative dinners in Lansing and at university functions.

She will be sent to California to participate in the "Miss Football" contest, sponsored by the Berkeley Jr. Chamber of Commerce.

**By Frosh-Soph Council**

**Pizza Week Planned**

All-University Pizza Week, sponsored by the Frosh-Soph Council, will be held Feb. 10-12, according to chairman Jim Frink.

During Pizza Week all regular pizzas with one item on them will be sold at a discount. Price will be \$1.25.

Every 50th call to the Pizza Pit will receive a free pizza. Free delivery to all living units by Frosh-Soph Council members is available at all times.

Many of the balloons in the Union grill today have coupons inside them which entitle holders to a free pizza during Pizza Week.

Frosh-Soph Council members will wait on tables and wash dishes at the Pizza Pit during Pizza Week.

**Schlitz Grants Scholarships, Research Aid**

The city of Houghton has invited the new queen in advance to attend the Northern Michigan J-Hop.

A traveling trophy will be presented by her living unit. The queen will receive a personal trophy and the crown as keepsake of her reign.

This year's J-Hop, Lansing, will feature the music of Tommy Doney's band Friday night and the Mauter-Finnigan orchestra Saturday night. Ella Fitzgerald will be guest artist on both evenings.

**Music Students Receive Honors**

Two students from the music department, who competed in the Battle Creek symphony auditions last Sunday, placed first in their respective divisions. It was announced Wednesday.

Fred Ormandy, classical and piano, Texas, graduate student in the woodwind specialist course, won first in the instrumental division.

Barbara Halstead, soprano from Okemos, won in the vocal division.

Both winners will appear as soloists with the Battle Creek Symphony Orchestra later in the season.

**Music Students Receive Honors**

Extensive facilities are available in the food service research laboratory under the direction of Dr. Leon Newcomer. The lab is devoted to basic research for the food industry as well as applied research in marketing and related restaurant problems.

**Demonstrator Tells of Fair At Luncheon**

A can of frozen orange juice may seem very commonplace to you, but to the people of Poland, it's something of a miracle. Miss Barbara Sampson found this to be true when she set up frozen food demonstrations in U.S. exhibits at the International Trade Fair in Poznan, Poland in 1957.

Miss Sampson, a product representative for the Bird Eye Division of the General Foods Corporation, spoke at the Homemakers Luncheon Wednesday noon at Kellogg Center. The luncheon was held in connection with Michigan State's annual Farmers' Week.

The only American woman to participate in the Poznan fair, Miss Sampson supervised 12 Polish university students in the demonstration of frozen food. She also demonstrated major and minor electrical equipment.

In her talk entitled "My 29 Days Behind the Iron Curtain," she told of the huge crowds that visited the American exhibition. As many as 20,000 curious and friendly onlookers passed through the exhibit in an hour, she said.

**SMALL'S**

stays comfortably hidden...

**Jockey V-neck T-shirt**  
made only by *Cosper*

For men who like a lot of comfort without it showing at the neck-line... the ideal T-shirt... Jockey brand V-neck T-shirt Soft, absorbent cotton gives you comfortable coverage. Special construction features make the shirt last and last. Get some today. Sizes S-M-L-XL.....\$1.80

**SMALL'S**  
211 SO. WASHINGTON

**Have a WORLD OF FUN!**

Travel with \$17.95! Unbelievably Low Cost!

**ORIENT**

60 Days from \$44.95  
100 Days from \$54.95  
150 Days from \$64.95  
200 Days from \$74.95  
250 Days from \$84.95  
300 Days from \$94.95

College Travel Office  
120 W. GRAND STREET  
2-2-3000

## Mrs. Hannah Plays Dual Role at MSU

By JUDY VANDONGEN

Mrs. John A. Hannah, wife of the University president, not only is the first lady of MSU, but also takes care of a home and family of four children.

Mrs. Hannah has been a resident of the campus for all but three years of her life. The daughter of ex-President Robert H. Snow, she grew up in the home of Family Row.

As a campus child she took advantage of many unusual opportunities. One of these was the reviewing of the 1937 parade which she watched on the field next to the president's home. This was considered an important social event and attracted large crowds.

After attending East Lansing High School, motivated by a natural love for the college, studied at Michigan State. Majoring in chemistry, she graduated at the end of the depression.

She became acquainted with Mr. Hannah when he visited her father on home business. They married in 1938 and lived off campus until he was appointed president in 1941.

Now the first lady of Cowles House, she supervises the house work of 15 rooms.

With four children three boys at ages 10, 11 and 16 and a 19 year old daughter, now a MSU student and dorm resident, Mrs. Hannah has all the duties of a busy housewife.

Although a housekeeper the most of the actual cooking, she does in three days of the week. This she regrets is not enough.

however to really "keep a hand in things."

As the wife of the president, Mrs. Hannah enjoys unusual privileges. She entertains many foreign visitors in her home, recently the President of the University of the Philippines, Adolfo Sison, and Vice President Richard Nixon were her guests during last year's commencement exercises.

Mrs. Hannah is a member of the Lansing and East Lansing Women's Clubs and of the Faculty Folk Club. She represents her children at Cub Scout and PTA meetings. With her family, she attends the All Saint Episcopal Church in East Lansing.

As a personal interest, she enjoys reading for a pastime. She is also a devoted follower of the MSU football game and shared the thrill of traveling to California when State played in the Rose Bowl.

A born horse lover, Mrs. Hannah is an enthusiastic rider. She had her own horse when young and now takes great pride in the Arabian she and Mr. Hannah recently acquired for their farm.

Their first Arabian was given to them as a Christmas gift. But with four children in the family, all enjoying the new possession, three additional horses soon joined the circle.

Visitors will find Mrs. Hannah a pleasant friendly woman. With her easy smile she explains that her campus home makes entertaining and providing an excellent opportunity to feel and appreciate the University's atmosphere.



Mrs. Hannah occasionally has a few leisure moments for relaxation. Here Mrs. John Hannah reminisces over a scrapbook.

## Ballot Box

Newly elected officers of Alpha Chi Omega are president, Charles Lockhart, Niagara Falls, Ont., senior; first vice president, Thomas McHugh, East Lansing junior; second vice president, John Matthews, East Lansing sophomore; recording secretary, John Bierlin, reporting secretary, Marshal Goren, Detroit junior; treasurer, Philip Schelma.

Recently elected officers of Alpha Kappa Phi are president, Charlie Schneider, Flint junior; vice president, Elaine Schwartz, Lansing sophomore; secretary, Eileen Kearney, Detroit sophomore; treasurer, Sherry Foster, Highland Park, Ill., sophomore.

New sophomore initiates of Alpha Lambda Delta, women's scholastic honorary, are Susan Booker, Birmingham, Nancy Duke, Hillsdale, Donna Goff, Muskegon, Karla Hoover, Henderson, Barbara Hubbard, Wayne, Mary Ellen Johnston, East Lansing, Judy Kaufman, Chicago, Judy Martinson, Tonawanda, Janice Riggs, Wayne, Linda Templeman, Findlay, Ohio, sophomore; Finlay, Ohio, Helen Wilson, Traverse City.

Recent initiates of Gamma Alpha Chi, women's national advertising honorary, are Kathy Javonoff, Battle Creek senior; Igi Gannon, Detroit sophomore; Jacqueline Frost, Dearborn, Ill., senior; Sara Furr, Dearborn, Ill., junior; Diana Geria, Dearborn, senior; Stephanie Young, New York, freshman; Rosalind Matthews, Saginaw junior; Linda Templeman, Findlay, Ohio, sophomore; Barbara Allen, Williamston junior.

Newly elected officers of Kappa Delta are president, Corrie Pearce, Detroit junior; vice president, Nancy Edmundson, Saginaw junior; secretary, Gloria Gannon, Detroit sophomore; treasurer, Sara Furr, Dearborn, Ill., junior.

Recently elected officers of International Sororities Club are president, Roger Gerth, Ft. Lauderdale, Fla., senior; vice president, Robin Murray, Glenview, Australia, senior; secretary, Hilda MacGregor, Dearborn junior.

Newly elected officers of Phi Sigma Kappa are president, Al Turner, Flushing, N.Y., junior; vice president, Bob Charbonneau, Rochester, N.Y., junior; secretary, Larry Miller, Marquette junior; treasurer, Hank Parsons, Clarkston junior.

New initiates of Sigma Delta Pi, national Spanish honorary, are Peggy Canfield, East Lansing sophomore; Diane Cramer, Lansing senior; Edwin Green, Kingston, Jamaica, graduate student; George Holt, Lansing graduate student; Allaire Schlicher, Lansing senior; Sarah Tallon, Dearborn senior.



SPRING LARK - Among Paris winter showings in this harbinger of spring fashions, the outfit features an exaggerated collar.

## Pinnings

ALPHA GAMMA RHO  
Jean Fille, MSU graduate and Alpha Omicron Pi, to Ed Graham, Rochester senior; Beth Wilson, Wyandotte sophomore and Pi Beta Phi, to Carroll Hart, Clayton junior; Mitz Stevens, Battle Creek freshman; to Tom Allen, Battle Creek sophomore; Judi Dixon, Warren junior; to Douglas Smith, Plainwell junior; Kathy Brian, Jackson senior; and Alpha Gamma Delta, to Bob Barrett, New Canaan, Conn., senior.

ALPHA TAU OMEGA  
Mary Brown, Niles junior and Alpha Chi Omega, to Doug Smith, East Lansing junior; Marge Miller, Grosse Pointe junior; and Alpha Phi, to Ron Cavall, MSU graduate; Dorothy Roy, Houghton senior; to Fred Gannon, Curtis senior.

DELTA GAMMA  
Nelda Trout, East Lansing senior; to Rick Schultz, St. Joseph senior; and Delta Sigma Pi.

DELTA TAU DELTA  
Adele Laxas, Birmingham junior; and Kappa Kappa Gamma, to Bill Young, Allegan junior.

## Engagements

DELTA GAMMA  
Bobbie Dye, Lansing senior, to Donald Peto, Oak Lawn, Ill.  
DELTA TAU DELTA  
Ketty Arnold, Bloomfield Hills, to Harry Durbin, Birmingham sophomore.



THE YEAR J-HOP will be semi formal both nights which means you may wear either dark suits or a tux Friday or Saturday night will still stick to their favorite cocktail dress. Modeling for the big night are Mike Mills, Georgetown, Conn., junior; Gene Wilton, Conn., sophomore; and Dan Earle, Pravit, Ill., senior.

## Tambika' Sets Exotic Theme

A fabulous, long-awaited, THE weekend of the year rally here — J-Hop!

The world famous Ella Fitzgerald, first lady of song, will entertain several times each evening.

Although men will be seen wearing dark suits or tux, coeds will be in style in cocktail dresses or ballerina length formals. It is traditional that a coed does not expect flowers from her escort!

Miss MBE, who will reign over many festivities throughout the state, will be crowned this evening by last year's queen, Penny Donahoe. Candidates for the 1959 title are: Holly Arnold, Dorothy Arnold, Pat Bergman, Jean Cary, Margie Kuba, Joy Teach and Diane Tillman.

Favors are part of the atmosphere and are guaranteed to make each coed even more happy she attended. Favors will be distributed in a very unusual way, also in connection with the theme.

The usual 1 a.m. curfew will be forsaken for Tambika. Coeds will receive two hours of special grace this evening and must be in by 3 a.m. Saturday evening an hour's special permission will be granted to 2 a.m.

To make the weekend even a little more festive, Pi Kappa Phi has planned an early morning breakfast for Pi Kaps and their dates, from 1:20 a.m. Friday.

Acher Foundation's J-Hop dinner will be from 6:30-8 p.m. Saturday. Following the dance, the group will gather for a breakfast from 12-1:30 a.m.

## With Groups in Activities

Dinners, and discussions the weekend's festivities planned by the religious organizations, Pi Sigma Club meets Sunday at 5:30 for a costume. Following the dinner, Dr. Richard Cockrell, administrator of Christ in Grosse Pointe, will discuss "What I Taught About Himself." Members of the Fellowship of Christian Liberals meet at 7 p.m. Sunday in 36 Union to discuss "Astronomy."

The Student Organization scheduled an open house and record dance for 9 to 11 p.m. at the Catholic Student Center. A gala night has been scheduled in typical New Orleans style for CSO members Saturday evening. A Mardi Gras party will take place from 10:30 to 1:30 a.m. at the center.

# THE CHARCOAL HOUSE

IN FRANDOR

WILL BE OPEN UNTIL 2:00 A.M.

FRIDAY & SATURDAY

J-HOP NIGHTS

FEBRUARY 6th & 7th

## SPORTS CAR SHOW

NATION'S LARGEST

Open 9 to 9 - Feb. 6 thru 22

Entire Program Included in Museum Admission

Henry Ford Museum  
GREENFIELD VILLAGE • Information LO 1-1420

Famous sports cars, past and present  
Many shown in Detroit for the first time!  
Action films of 1938 Sebring Road Race  
All time greats — Ferrari, Maserati, Jaguar, Mercedes and many others!

## THE MAN OF DISTINCTION GOES TO THE J-Hop

HOW ABOUT YOU?

LAST DAY TO BUY TICKETS ON SALE AT UNION

TAMBIKA FEATURING —

- ☆ ELLA FITZGERALD
- ☆ SAUTER-FINNEGAN
- ☆ TOMMY DORSEY

## GOT YOUR EYE ON SPACE?

See how we matter of fact use Crusader lighter cases already wearing space suits. Space research vehicle studies are among our top priority projects. You might even say that of tonight the sky is no limit — for products — or means. Ask our representative about these and other projects of Vought Aircraft.

OUR REPRESENTATIVE WILL BE IN YOUR PLACEMENT OFFICE

FEBRUARY 9 - 10

**VOUGHT AIRCRAFT**

## Hurry... Last Day

# Shepard's

semi annual footwear

## CLEARANCE

BATES DESERT CHUKKER BOOTS

Camel Shag for Year Round Wear

REGULAR \$13.95 **\$10.88**

BATES BLIZZARD BOOTS

REGULAR \$16.95 **\$13.88**

EAST LANSING ONLY

# Shepard's HOES

315 EAST GRAND RIVER AT MICHIGAN STATE

High Scorer Wants Out

Yardley and Pistons May Part

DETROIT (AP)—The Detroit Pistons indicated Thursday they are prepared to trade high-scoring George Yardley.

The veteran Yardley, who led the National Basketball Association last year with a record 2,001 points, said earlier in the day he and the Pistons are through "by mutual agreement."

He has a broken hand and is returning to his home in California. Yardley said in an interview with the Fort Wayne News-Sentinel that he either will be traded by Feb. 15, the NBA's trade deadline, or will quit the same.

In Detroit, General Manager W. Nick Kerbow said, "We're not opposed to trading our top player if we get a top player in return."

He said he did not know what Yardley meant when he said he and the Pistons are through "by mutual agreement."

Yardley has not been scoring as well this year and has been plagued by illness and injuries.

Kerbow said the Pistons are just three or four days away from completing one major player deal. He added there might be two major trades.

Off to the Races  
State Skiing  
Teams Trek  
To Boyne Mt.

The MSU ski teams will travel to Boyne Mountain in competition in the Michigan Intercollegiate Ski Association races held this weekend.

Both the men's and women's teams will participate in the downhill event on Saturday and the slalom event on Sunday.

Many Michigan schools will be represented at the race.

The men's team is composed of five members: Ross Huber, Orchard Lake, Jr.; Dick Huey, Glen Arbor, Jr.; Dan Perry, Dayton, Ohio, Sr.; Homer Green, Glenora, Ill., Jr.; and Andy C. Bulsky, Petoskey, Pa.

The women's team also has five members: Velma Kerstik, Hancock, Pa.; Elaine Kerstik, Detroit, Jr.; Jackie Jaakelainen, Amnuk, Sharon Long, Hamden, Conn., Sr., and Mary Ann Thompson, Newberry, Jr.

Here Tonight

MSU, U of M Renew Ice Rivalry

By DAVE BARRELL

Michigan State and the University of Michigan resume one of the nation's oldest collegiate hockey rivalries tonight when the two teams tangle in the first of a two-game home-away series.

Tonight's game at the Ice Arena will be the school's 47th meeting since the rivalry began in 1922. Michigan holds a top-sided lead having lost to State only three times. All three defeats were registered last season when the Spartans first emerged as a prominent hockey power.

Both games will have a great bearing on determining the winner of the Michigan Press Trophy. The trophy is given each year by the Michigan Press Association to the team which winds up the season with the best record in intra-Michigan hockey play.

MSU won the award last year by splitting with Michigan Tech and beating Michigan three out of four.

Tech currently leads the race.



FRED DEVUONO

... will strengthen State's well balanced attack ...



BILL MACKENZIE

... will strengthen State's well balanced attack ...

With a pair of wins over the Wolverines and a split with the Spartans, a sweep of tonight's series would put State in a tie with Tech and give them a 10-3-1 record.

Leading Coach Ann Besonen's squad in its fifth home tilt of the series will be captain Joe Polans and Terry Moroney with 28 points a piece. Completing the power line and right behind in scoring is Dick Hamilton with 27 points. Fourth in scoring is defenseman Ed Pollock with 22 points.

The two teams will be familiar with each other's play as a

There Saturday

Michigan State and U of M Renew Ice Rivalry

result of the combined which played against the Michigan team.

Michigan Coach Al B. Ho has been plagued by depth all season, though perhaps his strongest and most solid squad all year.

The Wolverines' defense erred last week with the loss of sophomore defenseman Ed Matlock. B. Ho has been using two 19th round success, plus strong goalie Russ (Bill) Boyle will be in the net.

Boysen said, "The team seems to be up for this and I certainly expect performance both which I can see in Bob White and Macdonald as good forwards you'll find anywhere in the league."

The Spartans have eight left this season and each must if they are to stay in contention for the NCAA championship games in March.

**LUCON** Late Show  
Tonight at 10:00 P.M.  
5 ACADEMY AWARDS  
**MARLON BRANDO'S GREATEST HIT!**  
**"A Streetcar Named Desire"**  
Feature 1:00 - 3:20, 5:10 - 8:00, 10:20  
ETIA KAZAN  
**VIVEN LEIGH AND MARLON BRANDO**  
with KIM HUNTER-KARL MALDEN  
Starts Wed. 2:00s  
"MR. ROBERTS" "BATTLE CRY"

**AFTER THE J-HOP . . .**  
**... DINE IN COMFORT**  
at  
**ARCHIE TARPOFF'S**  
121 E. Kalamazoo  
Reservations IV 9-5150

Tank, Mat Teams Home This Weekend

Hoosiers Are Rated as Top Rivals So Far

Spartans Look for 5th Straight Win

By SUZETTE RAMSEY

Michigan State's swimming team faces its toughest meet to date this Saturday when it battles the Indiana tankers in the Jenison pool at 2 p.m.

Coach Charles McCaffree's Spartans are seeking their fifth straight win. Indiana has a 2-1 record, winning over Miami and Iowa and losing last weekend to Michigan, 66-39.

Indiana has what McCaffree calls the best backstroke in the nation in sophomore Frank McKinney. Jim Connelan, the Hoosier coach, calls him "probably the most talented swimmer I have ever worked with."

McKinney broke one American record and two national records as a freshman last year. He set new varsity, American and intercollegiate records in his first dual meet of the season with 2:04.0 in the 200-yard backstroke, which is a weak event for MSU.

Another Indiana sophomore, Bill Barton, is one of the top butterfly swimmers. Barton and fellow-sophomore, Dick Beaver, should be hard to beat in the individual medley. Beaver is also a top backstroke.

Spartans Al Coxon, Frank Mosine and Bruce Netzer will meet a good match in McKinney, Barton, Gerald Miki and Leslie Nakamura in the medley. This Hoosier combination is the one that placed a close second in the Big 10 relays in Ann Arbor last month.

Indiana will have plenty of competition from MSU as well. They're weak in freestyle, while State has champion Don Patterson in the 50 and 100-yard freestyle, along with Larry Jones in the 50, and Dennis Baker and Dave Digt in the 100.

Indiana is weak in long distance relays, where MSU has record-breaking Billy Stewart. State should have an edge in fancy diving with Tony Kaufman and Jerry Chadwick competing against lone Hoosier Bob Blann.

With the good competition that Indiana has, Saturday's meet should be as Coach McCaffree predicts, "a great meet."



TONY KAUFMANN

... in 'diver's' seat ...



NORM YOUNG

... has clean slate ...

Michigan State's young will be led by underclassman Young, a 130-pound sophomore. The former State high school wrestling champ has yet to be pushed by an opponent. Assistant coach Gayle Miles expects Illinois' Don Mart to be the first.

Two senior and one junior make up the core of the team. Senior Jim Ferguson, who dropped from the 177 to the 167, expects the toughest tussle in Harold Brown, Jerry Jackard (147) and the varsity after a week's absence to go against Tom Hard. The other upperclassmen are 157-pounder Bob Milet, tied with Mike O'Laughlin.

MSU's sophomore crewmen Jack Benson (121), Giacardo (137), John Mc (177) and Mike Senz (167).

Last season State got by nois, 19-9, in dual competition.

Michigan State grapplers hope to be the first successful varsity team in the Intramural Sports Association Friday night when they wrestle the University of Illinois wrestlers there at 8 p.m.

The home wrestlers are trying to keep a two-victory streak alive, along two straight dual meet falls. Coach Fredley Collins whipped his squad into winning form. The Spartans down Iowa Teachers and duo in order.

The Illinois will be a group of wrestlers as the battle will be the second three nights of combat a night they were at Waterloo and Saturday face Michigan.

Michigan State's young will be led by underclassman Young, a 130-pound sophomore. The former State high school wrestling champ has yet to be pushed by an opponent. Assistant coach Gayle Miles expects Illinois' Don Mart to be the first.

Two senior and one junior make up the core of the team. Senior Jim Ferguson, who dropped from the 177 to the 167, expects the toughest tussle in Harold Brown, Jerry Jackard (147) and the varsity after a week's absence to go against Tom Hard. The other upperclassmen are 157-pounder Bob Milet, tied with Mike O'Laughlin.

MSU's sophomore crewmen Jack Benson (121), Giacardo (137), John Mc (177) and Mike Senz (167).

Last season State got by nois, 19-9, in dual competition.

**THE STYLE MAJOR CREATES NEW STYLE MASTERPIECES IN**  
**NEAT and NARROW STRIPES and MODELS**  
Precisely right trim and slim styling in long-line natural-shoulder models and neat, narrow stripings of new hue Burnt Browns, Storm Greys, Smoke Blue and Black with Burgundy.  
\$65  
In a grand choice of Flannels and Fine Worsteds  
**H. KOSITCHEK BROS.**

**☆ TODAY IS SUPER BARGAIN DAY! ☆**  
SEE — "I WANT TO LIVE" AND "THE PERFECT FURLOUGH" — TWO FEATURES!  
Continuous from 1 p.m. **MICHIGAN**  
**104 POLAR-TRAPPED GL's** picked the army's champ woman-chaser to take their furlough by proxy!  
**287 CERTIFIED LAUGHS!**  
**TONY CURTIS - JANET LEIGH**  
**KEENAN WYNN - ELAINE STRITCH**  
**LES TREMAYNE - MARCEL DALIO - LINDA CRISTAL**  
DON'T MISS THIS OUTSTANDING BARGAIN-DAY SHOW!

**ESQUIRE**  
LAST 7 DAYS  
"MAN OR GUN" with Macdonald Carey  
AND  
"NO PLACE TO LAND"  
STARTS SUNDAY  
Shown at 2:30 - 5:30 - 8:45  
**NOTHING EVER MATCHED ITS VIOLENCE... ITS VENGEANCE... ITS WATNESS!**  
**THE BOWERY BOYS IN "UP IN SMOKE"**  
Shown at 1:00-2:10-7:25-8:40

**ONLY AT ODAM'S**  
"STEAK ON A BUN"  
COLE'SLAW FRENCH FRIES  
**ODAM'S** 75c  
E. GRAND RIVER  
**OdAM'S** 1040 e. grand river ... ED 2-637

# Aggers Wary of Purdue

## Anderson Looks for Tough Game

### Ballmaker Team Could Be Spoilers

CHUCK RICHARDS

Bob Anderson has been having a hard time living up to the high expectations in his basketball play this season. The Michigan State Spartans staff hasn't been too kind to him.

Anderson, who has been the star of the Spartans' offense, has been having a hard time living up to the high expectations in his basketball play this season. The Michigan State Spartans staff hasn't been too kind to him.

Anderson, who has been the star of the Spartans' offense, has been having a hard time living up to the high expectations in his basketball play this season. The Michigan State Spartans staff hasn't been too kind to him.



BOB ANDERSON  
... Spartan star leader ...

## Phi Deltas Cop IM Cage Win

Farmhouse Sigma Nu and Phi Delta Theta were winners in Thursday night IM Basketball action at the IM Building.

Farmhouse overcame an 18-16 half-time deficit to edge Phi Kappa Sigma 32-29. Frank Dvorak of Farmhouse and PE Sigma Ralph Przybyla, each with 11, led the scorers.

In another contest, Sigma Nu defeated a strong Kappa Alpha Psi team by a score of 49-29. Jim Terzante of Sigma Nu topped the scoring with 18 points while Ellmore Freeman of KA Psi dropped in 16.

Phi Delta Theta took a 13-7 lead at the end of the first quarter and extended it to a 40-24 victory over Lambda Chi Alpha. Phi Delta Theta Wheeler took game scoring honors with 17.

## Bob Anderegg Shines Without Star's Spotlight

By LARRY WRUBLEWICKI

In sports sometimes an unheralded athlete reaches stardom without ballyhoo and publicity from sports writers.

Such a case is Mike Bob Anderegg, who is enjoying his best collegiate year on the hardwood court.

During his college career Bob has starred, but his performance has been blurred to the public eye because teammate John Green happens to be probably the most exciting basketball player in the country.

Probably such a cast-off attitude by the public would bother an athlete, but not in Anderegg's situation. The 6-2 forward feels that a team effort is most important. "We all want to win the Big 10 title, and each one of the players is contributing to this goal," Bob said.

Compared to other top-notch players, Anderegg makes up with his fierce competition and desire what he lacks in finesse and ability.

Anderegg is a rough player and enjoys playing when the conditions get rough.

"Bob is big, strong and deceptive. He has the most wonderful handle of any athlete I've ever coached. He is our most consistent scorer and without a doubt our best defensive player, not even excepting John Green. What more can I say?" Coach Fordy Anderson exclaimed.

Bob's teammates nicknamed him "Hans" because of his lightning-quick hands. He continually tries to steal the ball

State News Sports

Night Sports Editor  
Jim Wallington  
Assistant: Carolyn Nelson  
February 6, 1959 Page Seven

## Wings Lose to NY, Leafs Beat Habs

The Toronto Maple Leafs thumped the Montreal Canadiens, 6-1 Thursday night to pull within one point of the league leader Red Wings who lost to New York, 5-6.

## IM Results

JUN 16 Phi Kappa Sigma 32-29  
Kappa Alpha Psi 29-49  
Sigma Nu 49-29  
Lambda Chi Alpha 24-40  
Phi Delta Theta 17-11  
Kappa Alpha Psi 16-49  
Sigma Nu 29-49  
Phi Delta Theta 13-7  
Lambda Chi Alpha 24-40  
Phi Delta Theta 17-11



WANT TO SEE WHAT YOU'RE DESIGNING?

What engineer doesn't long for a drafting board that is a special kind of drafting board? One that is easy to use, that is easy to clean, that is easy to store, that is easy to transport, that is easy to use, that is easy to clean, that is easy to store, that is easy to transport.

## Gymnasts Seeking Win No. 5

Plagued since the start of the season by ineptitudes and, more recently, key injuries, the defending NCAA on-champion Spartan gymnastics team will meet Indiana Saturday at Bloomington in an attempt to extend a four-meet winning streak.

Coach George Krzyzala, who lost most of his free exercise, tumbling and trampoline crew during last week's visit over Ohio State when Chuck Thompson and John Francis both received injuries, is sending a six-man squad against the Hoosiers.

Capt. Cal Girard, State's top point-scorer, and Angie Focht will work all-around along with sophomores Hal Sherr, Big 10 horizontal bar champ Stan Tar-who, unbroken this year, will enter his first collegiate event other than his specialty and apparatus man Mike Foss and Bob Strady will complete the team.

Francis began practicing on trampoline after the team lost



contact lenses let you see and look your very best

More and more people are discovering the true pleasure and good looks of contact lenses. The tiny plastic lenses are completely invisible and polished to your prescription, determined through an eye examination by our optometrist. They fit snugly over the entire cornea, leaving off the complete natural vision. Why not give us the pleasure of the complete story?

WALLACE OPTICIANS

State Theater Bldg., East Lansing • Ph. ED 3-1117

## Schmittermen Out for First Victory in Triangular Meet

By CAROLYN VALONE

The Spartan fencing team will seek its first victory of the season Saturday when they travel to Champaign, Ill. The Schmittermen will face Illinois and University of Chicago in a triangular meet.

Chuck Schmitter, Jr. will head the full team, followed by Dick Lawless and Terry Gilman. Schmitter, a sophomore, has a 6-0 record this year.

Art Dowd, who looked good at last week's meet, will be number one man on the open team. Down was top bouts against University of Buffalo

## Schmittermen Out for First Victory in Triangular Meet

By CAROLYN VALONE

lost Friday. Carl Knight and Doug Jewell will complete the open line-up.

The sabre trio will include Don Johnson, Steve Arnest and Neil Brown. Johnson also took two decisions in last week's meet.

The squad will be operating without the services of Randy Hipier, the only returning letterman. Hipier has been out of action all season.

The Spartans will meet some heavy competition in the Illinois team. Six lettermen, including All-American foil fencer Aubrey Silverstone, form the nucleus of the Illini squad.

## GLADMER THEATRE - PHONE IV. 2-9831

LAST DAY - VINCENT PRICE in "HOUSE ON HAUNTED HILL" STARTING SATURDAY

FRANK SINATRA  
DEAN MARTIN  
SHIRLEY MAC LAINE  
M-G-M PRESENTS A SOL C. SIEBEL PRODUCTION  
SOME CAME RUNNING  
MARTHA HYER  
ARTHUR KENNEDY  
NANCY GATES

By the author of "When Have You Starved?"

Screen Play by LEONARD BERNI - JOHN PATRICK and ARTHUR SHEENMAN. Based on the novel by JAMES JONES. Directed by VINCENTE MINNELLI.

LATE WORLD NEWS EVENTS  
COLOR CARTOON "TOY WATCHERS"  
Features Start Ad - 1:35 - 2:07 - 6:28 9:35 - 11:30

COMING SOON - "RALLY ROUND THE FLAG, BOYS"

## STATE

THE STORY OF A TOWN WITH A DIRTY MIND

Where evil grows and ugly rumors turned a tender young romance into a nightmare of despair!

THE RESTLESS YEARS

JOHN SAXON SANDRA DEE

LUCIA FITTEN - MARGARET LINDSEY - VIRGINIA GREY  
with JUDY MORGAN - ALAN BARTER  
- TERESA WRIGHT - JAMES WHITMORE

Program Information Dial ED 3-1617

Later Show Tonight 10:15 P.M.

See a man escaped

COMING SOON  
Film Presentations (In English) "DEMONIAC"  
Second In Our Series of International

WHAT ARE YOU DOING ON FEB. 27 & 28

## Public Administration Fellowships Available

Students interested in public affairs and public service careers who will receive their B.A. degree in June have been offered an opportunity to apply for fellowships to study at two universities.

The fellowships grant \$1,700 a year plus college fees. Each fellowship approximates \$2,200 in total value.

Beginning in June, men will serve three months with a public agency such as TVA or a department in a city or state government. In the 1939-40 school session they will take graduate courses at the University of Alabama and Kentucky or at the

University of Florida and Tennessee.

Completion of the 12-month training period entitles men to a certificate in public administration. They can be awarded a masters degree at either of the

two universities attended upon completing a thesis and passing examinations.

For eligibility requirements and other information, write to the Education Director, Southern

Regional Training Program in Public Administration, University of Alabama, Drawer 1, University, Alabama. The deadline for submitting applications is March 7.

## Four Artists Exhibit Works

Four MFA artists were honored with invitations to exhibit their works at the Invitational Craft Exhibition currently at the Ball State Teachers College in Muncie, Indiana.

Margaret Vuill is exhibiting a copper enameled bowl, Erling Branner a mahogany platter, Louis Rayner a "vase" ceramic vase and Irwin Whitaker an earth-glass bowl.

Three former students, each now well-known professionally, were also represented in the exhibition. They are the husband and wife team, Audrey and Robert Engstrom and David Van Donsumen. The Engstroms are each showing jewelry for which they are widely known and Van Donsumen is exhibiting a fabric wall hanging.

## Two Music Concerts Scheduled

The music department has scheduled two concerts in the Music Aud. this weekend.

On Friday, Ana Raquel Satre will present vocal selections in English, French and Spanish. Highlighting the evening will be seven Spanish Christmas carols.

Miss Satre, an eminent South American soprano, has had concerts and operas in Germany, Austria and South America. She was the winner of the International Concours at Paris in 1936.

Tickets for the 8:15 p.m. performance may be purchased at the door. Students will be admitted free upon presentation of their I.D. cards.

The Music Department Collection, directed by Dr. J. Murray



ANA RAQUEL SATRE

Nathour, professor of music, will present a program of Instrumental Favorites in the Music Aud on Sunday, at 4:00 p.m.

The program of fugues of the period from 1500-1800 will be performed by faculty and student musicians.

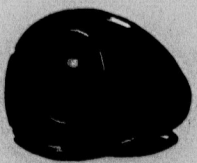
Student performers are: Albert Desiderio, Springfield, Pa., grad student; Barbara Lewis, Lansing senior; Doris Kaniewski, Buffalo, N.Y., junior; Marcia Mitchell, Grand Rapids, junior; Elizabeth Peets, Midland sophomore; Dean Wilson, Lathrop, Ill., grad student.

Russell Dahlen, Joliet, Ill., junior; William Mack, Grand Rapids, freshman; Thomas Jantzer, Atlanta, Ga., junior; and David Walters, Royal Oak, senior.

Students will comment on the fugue form, the basis of much twentieth century writing.

Radio WKAR and WKAR-FM will broadcast the program. The public is invited to attend this concert free of charge.

**ORDER YOUR  
M.S.U. RING  
NOW!**



**RANNEY Jewelers**

Registered Graduate  
JEWELRY APPRAISER

Next to  
State Theater

OPEN TODAY (FRIDAY) 9:30 A.M. to 9 P.M.



*enchantment*

## For the Easter Wedding

Planning an Easter Wedding? See us for the gown of your dreams. Our enchanting collection for the spring bride combines traditional charm with fresh new ideas . . . lovely ways to look on your day of days . . . exquisite creations in silk, lace, organzas, wedding taffeta and combinations all with elegant simplicity; new Watteau backs, bell, dome and lantern skirts. Misses' sizes 8 to 16 . . . \$39.95 to \$129.95

KNAPP'S WEDDING GOWNS — SECOND FLOOR



Julia Gray  
Wedding  
Consultant

For expert assistance  
help to carry every detail  
from engagement  
right through the wedding  
ceremony.

SECOND FLOOR



Jean King  
Gift  
Consultant

Register pattern preferences  
and gifts of china,  
crystals, linens and tableware  
to avoid duplication.

KNAPP'S MERRAINS



**PERMANENT  
OR REGULAR ANTI-FREEZE**  
At Kramer's Popular Low Prices

**COMPLETE MACHINE SHOP SERVICE**

LARGEST DISCOUNTS IN TOWN

**GENERATORS**

**STARTERS**

**DRIVE SHAFTS**

EXPERTLY SERVICED!

Crankshafts Ground  
In or Out of Car

Cylinder Reboring  
A specialty

— Wholesale & Retail —

**KRAMER AUTO PARTS**

MEMBER A. M. A.

800 E. KALAMAZOO PH IV 6-1335

SHOP DOWNTOWN TODAY

FRIDAY - 9:30 to 9 P.M.



*This silk shirtwaist  
is the prize!*

**\$22.95**

Our Fashion Co-ordinator found this exquisite dress in

Dallas at a world famous store . . . where it was the talk of the town. Dallas women were so excited about it . . . now Knapp's has it and you're the winner!

A lustrous silk broadcloth with deep hem, multi pleats, three-quarter sleeves and softly designed shoulder line. You'll love its neo-classic look in Black, Navy, Blue or Beige; sizes 12 to 18. You'll want it, for sure!

KNAPP'S BETTER DRESSES — SECOND FLOOR



Up to 4 Hours Free  
Parking Downtown

MAIL THIS COUPON

J. W. KNAPP COMPANY, Lansing, Mich.  
Please send me this prize-winning silk shirtwaist  
(I will add 3% sales tax.)

Size | | Color |

Name \_\_\_\_\_

Address \_\_\_\_\_

City \_\_\_\_\_ State \_\_\_\_\_

Charge  C. O. D.  Check Enclosed