

On to OSU!

Football Team Travels
To Columbus
See Page 5

Michigan State News

Serving MSU For 50 Years

The Weather

Cloudy, Possible Rain
Low Thursday 35
High Today 54

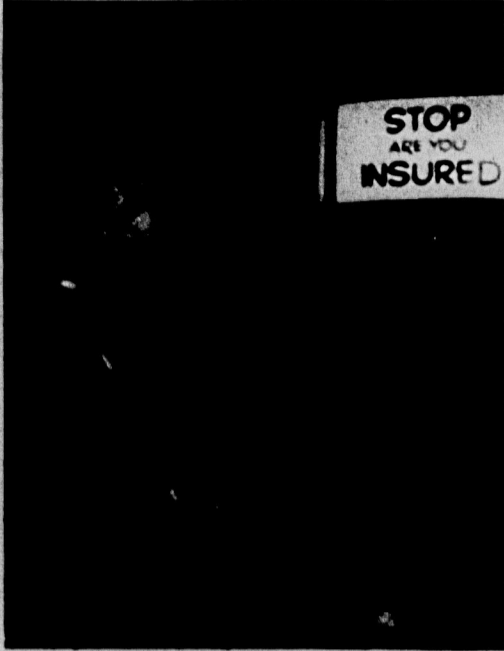
Vol. 51, No. 86

FRIDAY, OCTOBER 31, 1959

PRICE 5 CENTS



CRASHED WINDOWS, broken woodwork and other materials show the effect of the blast in the room next to where the explosion



IRONY OF DISASTER shows as fireman enters smoke-filled laboratory by sign urging student chemists to carry accident insurance.



THE INTERIOR OF the room where the explosion took place shows the destructive force of the blast which critically injured three persons and sent three others to hospitals. It was apparently a 'gas-type' explosion, and was followed by a small but 'very hot' fire.

State News Photo by Jerry Holmes

EXPLOSION IN KEDZIE CHEM LAB INJURES FIVE

Two Student Experimenters Merge Aflame From Lab

East Lansing Firemen Rescues Trapped Chemist From Smoke-Clogged Organic Research Room

By MARY HUFF
State News Editor-in-Chief
"God, help me!" screamed Philip Shreiner, trapped for 10 minutes in the smoke-filled organic research room of the East Lansing Fire Department crawled through the smoke and drag him bodily from the room. Shreiner said he learned from a student in the hall outside that one of the men

was still inside the room where the explosion occurred. He immediately put on a charcoal all-purpose mask and entered the room. Gordon said he told Shreiner to yell again. "Sound off," he said, "it's the only way I can find you." "He was a gritty sort of a guy when I got to him," Gordon said. "He tried to get up but couldn't, so I dragged him as best I could. He didn't say much, but just cried out, 'Try and save me.'"

Gordon managed to get Shreiner out of the room and into an office close by. Shreiner's body was charred beyond recognition, and a professor said at first view he mistook him for Fillmore Freeman.

The other two students critically burned got out of the lab on their own.

Harold Ringler, grad student working across the hall said he heard three explosions almost all at once. Then he saw two people running out, aflame from head to foot.

Other grad students rushed over with fire extinguishers and sprayed the flaming clothes and bodies of Harlo Mork and Freeman.

According to others working on the floor, two or three people rushed into the lab with fire extinguishers. They were forced to retrace their steps, unable to even see into dense smoke.

Gordon, 41, said it was his first experience in a fire rescue. He is a 12-year veteran fireman.

Joe McCoy, grad student working in the lab below the explosion, said it seemed as if it were in the office next door.

The entire lab was a shambles as firemen worked for hours cleaning up water and debris after extinguishing the fire.

Paint peeled off the walls and ceilings. Debris, a huge pile of mangled papers, charred desk tops and lab benches were smoking an hour after the explosion.

Shelves six to eight feet from the probable explosion stood in skeleton framework. Broken glass covered table tops and the floor, and was scattered on the ground outside.

In the room next to the organic research lab, the face of a plastic clock had completely melted off. The large electric wall clock at the opposite end of the room from the explosion had been jarred from its place.

The explosion apparently occurred in the corner of the lab farthest from the single exit.



FILLMORE FREEMAN, research chemist in the Kedzie organic research laboratory, is carried out of the building by St. Lawrence Hospital ambulance attendants. Freeman was in the

room when the explosion occurred. He suffered third degree burns over 20-30 percent of his body; his condition was listed as 'critical' by the hospital.

Three Critical Following Blast

Debris, Inch Deep Water Line Third Floor Room

By PETE WALTERS
State News Managing Editor
Five graduate students were injured Thursday night, three critically, when an explosion of undetermined origin rocked the organic research laboratory on the third floor of Kedzie chemical building.

In critical condition at Sparrow Hospital, Lansing, were Harlo Mork, 21, of Trenton, and Philip Shreiner, 25, of Lansdale, Pa. Fillmore Freeman of Chicago was on the critical list at St. Lawrence Hospital, Lansing.

Mork and Shreiner reportedly suffered from burns, shock and lacerations. Freeman had third degree burns on 20-30 percent of his body, attending physicians at St. Lawrence said.

The explosion occurred at 8:15 p.m. during a distillation experiment, according to chemistry department head Dr. Laurence Quill. Firefighters from East Lansing, Lansing Twp. and Meridian Twp. extinguished a small blaze following the blast.

Treated for minor injuries at Olin Memorial Hospital and released were Ernest Benson of New Castle, Pa., and James Corbin of East Lansing. A sixth man, Frank Chloupek of Berwyn, Ill., sustained minor injuries during rescue work and was released after receiving first aid.

An estimated 1,500 spectators encircled the building's main entrance as firemen, newsmen and chemistry department personnel sifted through debris in inch-deep water for more than an hour.

The damage was contained in the 20 by 40 foot lab and a smaller adjoining room. Firemen used an aerial ladder rig to fight the accompanying fire, then worked inside with the aid of oxygen masks until chemical fumes were cleared from the area.

Dr. Andrew Timnick, associate professor of chemistry who was in the building at the time of the explosion, said he heard someone shout "Call the fire department!" and telephoned East Lansing firemen when he saw smoke pouring from the research lab.

One of the student's safety glasses were blown off in the blast and badly twisted. A metal apparatus clamp, also distorted in the explosion, was fused to a piece of glass by the heat. Bloodstains and shreds of charred clothing trailed down the hall where the injured men were carried.

Shreiner, who was reportedly conducting the experiment, was burned so badly that his face could not be recognized, one observer said.

Michigan State Police quoted a chemistry department source as saying the students had left uncovered a chemical which was supposed to have a lid on it and that the substance flared up, causing the blowup.

East Lansing Fire Marshal Phil Patriarche and campus fire safety officer Robert Wisbal were not immediately available for comment.

Legislature Cautious

Newest Cash Crisis

Legislature cautiously came to grips Thursday with its newest cash crisis.

According to the AP, lawmakers resolved to meet on weekdays, except on weekends, until a solution is found, with the guess that it would take three weeks.

Some 70 million dollars behind payment of bills, the state is further losing ground at the rate of 10 millions monthly.

Legislative Republicans held the lead in framing measures to reduce the revenue loss from cancellation of the 110 mill dollar use tax increase vote.

It was readily conceded by Democrats in a special message that refrained from any tax recommendations.

Legislative Republicans produced more than a decision to set a 12-member joint Senate-committee to break through a solution. A long list of possibilities was only

over one new tax proposal was to go along with a list of more than two possibilities drawn up in a report by state revenue officials transmitted to the legislature by Williams.

Legislative Republicans set out in the Senate a bill, called for a cut of up to 25 million dollars in state revenue, with a \$10 million cut in the state's share of the cost of a motor vehicle.

The bill met with opposition from Democrats.

Legislative Republicans signed for a bill to cut P.L. 350 can do so under following schedule:

Monday - K-O
Tuesday - P-S
Wednesday - T-S

Band to Play At Ohio State Football Game

MSU's famous marching band will travel to Columbus, Ohio, Saturday for the MSU-Ohio State University football game.

Through the courtesy of Oldsmobile division of General Motors, the Spartan band will be on hand to present a half-time show.

Individual instruments will have a chance to shine as director Leonard Falconer "takes apart" his 125-man ensemble.

The trombones will show off first to the tune of "Trombone Blues." Tubes will get a chance next, followed by cornets. The clarinets, which seldom solo in the band, will play a reedy, musical "Shish-Kebab," and the drums will go Latin-American with "Cumbachero."

The band will reunite for the season favorite "Semper Fidelis." Drum major Ray Stewart will be introduced before the game, when the band will salute Ohio State with a monogrammed "Ohio" and its home university with "MSU" and its alma mater, "MSU Bluebonnet."

In Frosh Elections

Garrett Takes Presidency

Candidate tabulations Thursday night showed two land-slides for freshmen and student congress offices.

Bill Garrett, San Bernardino, Calif., and John Howell, Birmingham, won the offices of president and vice president, respectively, while coed Phoebe Matsuura, from Kaelakea Kona, Hawaii, became the newly elected treasurer.

Garrett brought in an overwhelming 866 votes over Roger Cayo's 437. Garrett lives in Kalamazoo.

Senior of the Week Full Petitioning Set

Friday's State News will feature the Senior of the Week column honoring two outstanding students graduating fall, winter or spring term. The series will be published every Friday during the school year.

Petitioning will again take place during the last two weeks of fall term.

Shaw, and is presently pledging Kappa Sigma.

Howell, who received 859 votes, became vice president over Mary Snell, 436 votes.

Miss Matsuura brought in an even 700 votes for treasurer, while Brenda Fields had 593.

Primaries for freshman secretary, were also held Thursday, as a revote was requested last week. Running next week will be Pat Girvin, Kirkwood, Mo., and Robin Wallen, Chicago, Ill.

Miss Girvin received 776 votes, Miss Wallen 765, and Mandy Kessler 639.

Final voting for secretary will be next week.

Student congress vacancies were also completed Thursday night.

Sororities representative is Lynn Chapman with 31 votes over Ellen Doyle with 9.

Snyder members are Sandy Marsh, 139, and Cleo Luce, 82 votes. Winnie Bailey received 78 and Betty Mellin, 71.

South Campbell elected Judy Speckman, 23, over Leatha Borodchuk, 6 votes.

Emmons victors were William Ryan, 83 votes, and Dave Scheel, 63, over Carl Boehm, 62.

Butterfield representatives are Ray Jenkins, 73, winning over Larry Simons, 70.

Pete Gilles received 90 votes over Harry Olson, 70 votes.

Each office had various numbers of write-in ballots.

Internationals to Meet

This week's meeting of the International club will be held tonight at 8 in 31 Union.

In addition to a short business meeting a student contest called "Deca Songs" will be included in the evening's program.

Read Daily by MSU's 23,000 Students and Faculty
The Michigan State News is published by students of Michigan State University, East Lansing, Mich., without direct faculty supervision.

Vol. 51, No. 86 Friday, October 30, 1959 Page Two

Attendance Should Be Student's Choice

THE MSU CATALOG, the university "bible," has a section entitled attendance. In it three policies are expounded. The first is that students are expected to attend all classes.

The section on attendance, in effect, states what most undergraduates in the U.S. accept as a matter of fact: to get credit for a course you have to attend classes.

There seems to be a feeling currently among upperclassmen that compulsory class attendance should be abolished. They argue that men and women in a university who are adult enough to choose their vocations, place their studies, etc., are also adult enough to decide when class attendance is actually doing them any good.

THERE IS A LOGICAL opposition to this view. Not all students are adult enough to decide. Many cannot make minor decisions; why allow them to judge what they may or may not need in such a major issue as education?

But advocates of the "attend at will" school have an answer to this. Why punish the majority of the students for the adolescence of a few? Most university students are capable of knowing their needs.

Take a hypothetical situation wherein no student is required to attend class. Everyone may come and go as they please. Some will attend all the time, some will miss occasionally but will make up for it outside of class. Some will suffer.

YET WHO IS ACTUALLY to blame? Certainly not the professor for not requiring attendance. It is rather the fault of the student who does not know his own capabilities and cannot estimate when he should and should not attend class. Does it not follow then that next term he will be more aware of his limitations and attend class more faithfully than if he had been dependent upon a professor to "bring" him to class every day?

Under our present system students are so used to having the administration make them attend class that they have ceased to evaluate the quality of instruction they are receiving. They make no decisions weighing the importance of what they hear in class against what they could read outside. They tend to listen to the instructor, take his lecture at face value and do no more thinking on the subject.

Under a non-compulsory system many students would be tempted to cut exorbitantly. But who are they harming? Not the professor. The student who misses that eight o'clock every day because "it's not required" will probably find it is required when he receives his grades at the end of the term.

FOLLOWING THE SAME hypothetical case, won't the superior student reap more benefits by being able to pursue other activities during the time which he might have previously spent in listening to a lecture he had already read out of class? It would also encourage him to do more independent study.

This style of university instruction is used extensively in Europe and has proved immensely successful. In England, for example, students attend only those lectures which they feel will be beneficial to them. We realize that we cannot extend this entire philosophy of education to MSU because of the completely different principles upon which our educational systems are based. Yet we could take a modified version of the European system and use it effectively without changing our own basic style.

We feel this would be beneficial to all concerned. Some students would find their limitations, others would be freed to use their time more valuably, and instructors, who tend to become lax in their lectures when they know students listen to them, would improve the quality of their lectures by inserting material which the student won't find in his

"Light?"



MAULDIN

Copyright 1959 The Pulitzer Publishing Co., St. Louis, Mo.

TGIF Bid Bye-Bye to Blackball!

By BILL CALLAHAN

IF THIS COLUMN has attracted any readership on campus, I hope the majority of readers will forgive me for addressing this week's message to a rather small segment of the campus population.

This is not entirely unjustified, for the subject is one of concern to all. At least, it should be.

I had the noisome experience this week of my first encounter with the time-honored custom of the "blackball."

Actually, it wasn't so much a blackball as a vote-swinging operation, but in overall effect and intent it was unmistakably a blackball.

THE INCIDENT OCCURRED the first time I attended a meeting of a group to which I was recently elected. I won't name the organization for that does not affect the principle involved and I have it hopefully "outgunned" as far as exchanging journalistic broadsides is concerned. Besides, those of whom I speak know I refer to them. I hope they will take this as advice rather than reprehension.

During the process of electing additional members one nominee, who was certainly as well (if not better) qualified as any of the present members, was rejected on purely personal grounds.

No sane or defensible grounds for objection were expressed by those in opposition to this nominee, other than personal dislike. But this was sufficient (on a recount) to swing the vote against election.

It so happens that the group involved is presently striving for recognition and hopes to benefit the student body at large

through its program. If it continues to reject members on such a basis, however, I cannot see how it can avoid defeating its own purposes.

IF THE ORGANIZATION were a strictly social one, I could understand the application of such criteria. I would not condone it or associate myself with it, but the position would be logically tenable for those who wished to accept it.

There is nothing personal in all this. I merely wish to suggest that if this group or any similar one hopes to achieve anything worthy of note, perhaps it would be to its advantage to re-examine its standards and select members according to their value, disregarding personal prejudices.

Although I have disassociated myself from the organization, this was not caused by spite or any personal vindictiveness. It is merely that I have to live with myself and find that I cannot, in conscience, do so while a member of any group that tolerates such methods.

I have certain standards of conduct. Perhaps they are not always correct, but they are mine and I must abide by them.

I REALIZE THAT the blackball is ancient, traditional and widespread, but I contend that an organization that needs doors rather than socialites has no room for it. For its own good it should eliminate such practices.

Personally, I find the custom distasteful and distasteful; fit only for petty power-seekers, who most likely are sick.

It is an odious thing which has no place on a university campus.

INFORMATION

Information section containing various notices and announcements for organizations like Hill House, Christian Student Foundation, Lutheran Student Association, Student Bible Class, Fellowship of Religious Liberals, Gamma Delta, Catholic Student Organization, and others.

Crossword Puzzle

- ACROSS: 1. Ocean, 2. Entrance, 3. Other, 12. Healer, 14. Horizontal timber, 15. Opposite of 31 across, 16. Thick degree, 18. Repair, 21. Cleaning implement, 23. Grain, 24. Righter, 25. Direct a missile, 28. Division of mankind, 30. Crafty, 32. Hinted, 33. Highways, 35. Opposite of 18 across.

Word puzzle grid with letters and numbers for clues.

- DOWN: 37. However, 38. Let it stand, 40. Sewer, 42. Impromptu, 44. Mail liquor, 45. Period of time, 47. Short stocky horse, 48. English letter, 50. Mince, 52. Large tub, 54. Flag, 56. Exist, 57. Leaf of a corolla, 58. Canal, 61. Tribe of Israel, 63. Effort, 65. Ireland, 66. Location, 67. Conjunction, 8. Compass point, 9. Chinese weight, 10. Kid, 11. German river, 13. Volcano, 17. Box, 20. Excavate, 22. Lasso, 23. Second-hand, 25. Spring month, 27. Lettuce, 29. Famous violinist, 31. Write, 33. Erasure, 34. Stalk, 36. Cravat, 38. Twisting, 41. Body of a church, 43. Cut short, 46. Charges, 48. Vegetable, 50. Competent, 51. Equal, 53. Cab, 55. Operatic solo, 57. Ornament of dress, 58. Allow, 60. Remnant, 62. Sex, 64. Concentrating.

Another crossword puzzle grid.

Life Can Be

CHAMPAIGN, Ill. (AP)—Prof. Joseph Sutton's name may become a footnote in textbooks on education, under the chapter "Modern teaching emergencies and how to meet them." Sutton taught a Journalism class at the University of Illinois Tuesday with a baby in his lap.

The emergency came up when one of Sutton's students arrived at class carrying his six-month-old son. The mother, who looks after the baby during that period, had been kept after class by another teacher.

Not one to stand in the way of learning, Sutton took over. "I didn't mind at all," he said. "The baby behaved quite maturely."

Published on class days Monday through Friday... Michigan State News is published by students of Michigan State University, East Lansing, Mich., without direct faculty supervision.


- City Editor: Sue Price, Editor: Sandy Letz, Asst. Editor: Jeannine Larkins, Sports Editor: Surette Ramsey, Associate Sports Editor: Jim Wallington, Editor: Connie Zekit, Night Editor: Sharon Coady, Art Editor: Sandra Dollahan, Ben Burns, Jane Wackerbarth, Asst. Night Editor: Howard Holmes, Larry Miller, Bill Egan, Linda Lofbridge, Joan Miller, Wire Editor: Mary Coplan, Wood: Haines, Linn Hoover, Joe Howard, Hank Bernstein.

CAMPUS CLASSIFIEDS DEADLINES: 1 p.m. Day Before Publication for Tues., Wed., Thurs., and Fri. Editions. Deadline for Mon. Edition: 1 p.m. Fri. Bills Payable 8-12 and 1-5 Monday through Friday. ED 2-1511 EXT. 261

Automotive, For Sale, Lost and Found, Personal, Catholic, Student Organization, National, Newman Clubs, Initiation, Real Estate, Service, Employment, Housing, Information, and various other classified advertisements.

GLADMER
 NOW SHOWING
HELD OVER
 ● ● 2ND EXCITING WEEK ● ●
THEY made this year's big picture

FROM THE FAMOUS NOVEL "THEY CAME TO CORDURA"
 WRITTEN BY GLENDON SWARTHOUT WHILE HE WAS
 A MEMBER OF THE FACULTY AT MICHIGAN STATE
 UNIVERSITY!



THEY CAME TO CORDURA
 RICHARD COYNE - MICHAEL CALLAN
 DICK YORK
 ROBERT ROSSEN

Late News Sport Reel Color Cartoon
 "Thrilling Chills" Merry Minstrel Magoon

Harriers Go to Notre Dame Today

The cross country team travels to Notre Dame today for a five-mile run. Spartan Coach Fran Dittrich has high hopes for his harriers in this dual meet. He says of the Spartans, "I feel that this is the best balanced team we've had in many years." Dittrich added, however, that he has three young sophomores who, although running well, might prove a little shaky in big time. The Notre Dame meet was originally scheduled for next week, but was moved up to prevent conflict with the Indiana state meet that weekend, and also because the Wisconsin-MSU meet for this weekend was canceled.

PLENTY OF FREE PARKING

ONLY D A M S

Serves the Biggest Beef Burgers in Town
 On Sesame Seed Buns —
 Eight Different Combinations



1040 E. GRAND RIVER — HOURS 7 a.m. - 1 a.m.

'S'-Wheaton Booters to Clash

Seeking to maintain a three-year mastery over Wheaton College and to extend their Midwest Soccer Conference record to three straight wins, the Spartan booters meet the Crusaders at 10 a.m. Saturday on the Soccer Field.

State is 5-1 overall, the only loss of the season and in MSC soccer history coming at the hands of St. Louis. Wheaton, 4-1 for the year, dropped a 4-1 decision to Chicago Navy Pier. Last year the Crusaders held St. Louis to the only tie in its otherwise-perfect 11-game history, 1-1.

State's previous wins over Wheaton were all defensive masterpieces, the Crusaders only netting one goal while the Spartans scored 11. Scores were 4-0 in 1956, 2-1 in 1957 and 5-0 last year.

The 1958 forward line, averaging 4.8 goals per game, has received extra help in recent weeks from an improved offense. The Spartans have 29 goals for 10 against this year.

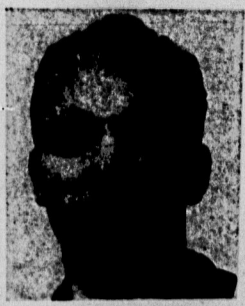
Key offensive men are Cecil Heron, who has a new single season scoring record already as a sophomore with three games to play, and Erich Stroder, last season's goal leader. Heron has 15 tallies, Stroder eight.

The defense, which has yielded only a single goal in the last two games, is receiving a good deal of its punch from new halfbacks Pete McKinnon and George Sepsyts, according to Coach Gene Kenney. Fullback Gerhardt Grentz, who sat out the last two tilts with a bad leg, is recovered and will start Saturday, Kenney said.

All goals in St. Louis' 4-2 over MSU were scored from Grentz' side of the field when he was on the bench, and Kenney rates the return of his defense as an important factor in coming contests.

MSU has topped Calumet and Indiana in conference games to date, with Wheaton and Purdue remaining on the long schedule. Winners of State's Eastern division and the Western will play off for the conference championship.

Saturday's game will be broadcast in the Central Michigan area.



PETE McKINNON . . . key defenseman . . .

Weightlifting Contest

The Weightlifting Club will sponsor an Olympic weightlifting contest at 1 p.m. Saturday in the Men's Gymnasium.

FOR SHOW TIME DIAL ED 2-5817

STATE
 EAST LANSING PHONE ED 2-2814

ADULTS 70c — KIDDIES 20c
 FIRST SHOW TONIGHT 7 P.M.
 SATURDAY CONTINUOUS FROM 1 P.M.

HEY KIDS! LOOK SAT - AT 1 P.M.

SPECIAL FEATURE
"COURAGE OF BLACK BEAUTY"

A NEW VERSION OF THE GREAT CLASSIC **KIDDIES 20c**

PLUS
7 - CARTOONS - 7

NOW SHOWING — 2 - BIG HITS

THE GRAPES OF WRATH Tobacco Road
by John Steinbeck

SHOWN ONLY AT 8:25 SHOWN AT 7 & 10:30

STARTING SUNDAY

"blue denim"
 CAROL BRANDON LYNLEY de WILDE
 MACDONALD MARSHA CAREY HUNT

ADDED FEATURE "BLOOD ARROW"

CREST Friday!
 Saturday!
 Sunday!

ON U.S. 16 - EAST LANSING

THE REVENGE OF FRANKENSTEIN

REVENGE OF FRANKENSTEIN SHOWN AT 7:14

"blue denim"
 CAROL BRANDON LYNLEY de WILDE
 MACDONALD MARSHA CAREY HUNT

MAN AGAINST DEMON!

DANA ANDREWS
CURSE OF THE DEMON

SHOWN AT 10:34

MACABRE

SO TERRIFYING WE INSURE YOU FOR \$1000 AGAINST DEATH BY FRIGHT

MACABRE LAST AT 12:15

Knapp's

Up to 4 hours of free parking when you shop in downtown Lansing . . . ask any salesperson for details. Knapp's is open all day Friday, 9:30 a.m. to 9 p.m.

PHONE IV 9-6551



Dashing, Youthful, All-Weather Coat

\$16.95

Water-repellent treated poplin coat, fully tafeta lined and carefully tailored in classic lines. With lightweight "Thoron" zip-in interlining which has long sleeves with knitted storm cuffs. In Natural, sizes 6 to 16.

KNAPP'S COATS—SECOND FLOOR




Wool Kasha Sheath to Slim a Junior

\$17.95

Unique . . . and delightful with its striking crossed-over bodice and button-down-the-side skirt! Trim belt with dashing chain and medalion accent; short sleeves and Peter Pan collar. In Beige, sizes 7 to 15.

KNAPP'S DRESSES—SECOND FLOOR



WOW-EE

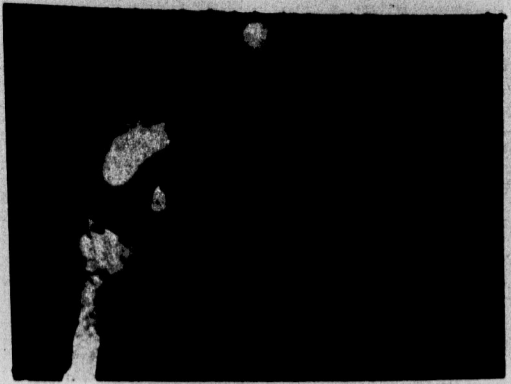
IT'S THE BIGGEST BESTEST & CHEAPEST COOL LAUNDRY IN THESE HYAR PARTS

UNIVERSITY LAUNDERETTE
 NEXT TO BUS STATION

There's still time to get your Ticket for the Coronation Ball Tonight!

State Gridders To Face OSU Spartans Need Victory To Stay in Big 10 Race

For second in the Big 10 with two wins and one loss, gridders will try their hand against a victory-hungry State team Saturday in Columbus, Ohio.



State News Photo by Jerry Holmes
... SAE griddier catches pass ...

The Spartans probably will use about the same offensive and defensive alignments that have seen action against Notre Dame and Indiana. A possible switch might be to place Carl Charon at fullback with the defensive unit known as "Cundiff's Crew" in place of Dick Baker, who has been sub-par physically.

"Cundiff's Crew" gets its name from center Larry Cundiff, who calls signals and plays the middle man in the line. In the Notre Dame and Indiana games the seven linemen made goal-line stands in crucial moments.

Preparing offensive styles for the game, State will use its "four and a half yard" pass and the Spar-gridders will have their wide open offense with its new double wing-T formation.

men in water will be All-American end and Capt. Jim White and All-American full-back White. White has carried in Rosters Now

will be for team badminton, country table tennis tournaments is today at noon, 10:30 to 11:30 a.m. in the IM office.

the ball 72 times for 229 yards and a 3.2 average this season. He hurt a shoulder last season, and may be out.

halfback Bob Ferguson is the best rushing average on the team with 5.7 yards per try (average on 34 carries).

State's line averages 215 pounds per man on the first try, the biggest being right guard Ernest Wright at 242 pounds and right tackle Jim

at 244. Bulky reserves 200-pound Birtho Arnold and 210-pound Ron Weldy.

IM Results
FOOTBALL
Chi 14, KAN 7
IOWA 16, ILL. 10
MICH. 14, OSU 10
MICH. 14, OSU 10
MICH. 14, OSU 10

Decker's Gridiron Gambles
By TOM DECKER
Michigan State moved to the top of the poll this week with its 17th victory over previously ranked Arkansas.

Michigan State ranked 17th, one place closer to first place in the Big 10 with its predicted victory in Columbus, Ohio. We do not see any stopping of the Spartans' unbeaten string in Indiana.

over KNU
over Pittsburgh
over California
over W. Virginia
over Air Force
over Florida
over Michigan
over Illinois
over Tech over Duke
over Rice
over UCLA
over N. Carolina
over Right 48, wrong 14:
week, right 12, wrong 2.

**BLACK SQUARE
END BOW TIES
ONLY \$1.50
VARSITY SHOP
224 ABBOTT RD.**

DTD's Strong Second Half Stops Sigma Nu's Snakes

Delta Tau Delta stamped itself as a major contender for the IM championship with a thorough 23-9 trouncing of Sigma Nu at Old College Field Thursday night.

One of the season's largest crowds saw DTD score first on a 36-yard pass play, Jim Draves to Jim Ver Plane.

promptly tied the game at 7-7 with a 25-yard strike to Jim Gersonde, and a safety with 10 seconds left in the first half put the Snakes on top, 9-7.

The Delt defensive unit decided the game in the second

half as a pair of key interceptions halted Snake drives and again supplied the offensive punch with scoring passes of 13, 24 and six yards.

Late Scores

HOCKEY
Boston 2, Detroit 6

GIVE YOUR CAR A "BRAKE"

\$12⁹⁵

COMPLETE BRAKE
RELINING

Includes labor
and materials —
no extras



Champion
Brake Reliners
IV 4-4649
2910 E. KALAMAZOO

BRING IT TODAY WEAR IT TONITE

BARYAMES

CLEANERS SHIRTS
U. S. 16 - M 78 INTERSECTION

State News
SPORTS
Night Sports Editor
Suzette Ramsey
Assistant — Gary Ronberg
October 30, 1959 Page Five

Contact Lens
and all your optical needs

WALLACE OPTICIANS

Branch Office — Vine at Clippert
(opposite Sears in Frandor)
eye examinations by
Dr. W. C. Jensen, registered optometrist
PH. IV 9-2774
HOURS: Mon. 1-5; Tues., Wed., Sat.,
9-5; Thurs. & Fri., 9-5

CHEMICAL SALESMEN

WALCO CHEMICAL COMPANY

Our growth company needs the additional salesmen and marketing men. We serve the pulp and paper, petroleum, chemical, food, textile, steel, and other heavy industries. Positions are open throughout the United States. Good salary plus expenses, profit sharing and excellent benefit program. Two years of college chemistry desirable, and a college degree required. Age 21 to 35.

M. R. McDonald
interviewing at
Michigan State University
NOVEMBER 3, 1959

KOSITCHEK'S EXPANSION SALE

BEFORE GAME TIME... COME DOWN... VISIT
KOSITCHEK'S... YOU'LL SAVE PLENTY

SEE - IVY STYLE CORDUROY SLACKS at \$4.99
SEE - IVY STYLE WORSTED SLACKS at \$9.99
SEE - BULKY POPCORN SWEATERS at \$9.99
SEE - ALL WOOL NEW SHADES BLAZERS at \$29
SEE - A REAL BARGAIN SHOES \$11.99

H. Kositchek Bros.
DOWNTOWN LANSING

CAMPBELLS SUBURBAN SHOP CAMPBELLS SUBURBAN SHOP

VISIT OUR DISTAFF ROOM FOR A Small, But Select Group Of Items For HER With HIS Tailoring. Such As Gant Shirts, Norfolk Skirts, Alan Paine Sweaters, Top-Siders, Foxhunt Raincoats, hurl-burl hingham Belts And Cumber-bunds, Lanett Ltd. Blazers.

The store with the Red Door
Has Window, Does Travel

CAMPBELLS SUBURBAN SHOP CAMPBELLS SUBURBAN SHOP

LUCON LAST 2 DAYS
"Houseboat"
2:25 - 6:30 - 10:30
"Teacher's Pet"
12:30 - 4:25 - 8:30
EAST LANSING - PHONE ED 26644

CLARK GABLE
DORIS DAY
TEACHER'S PET
GARY GRANT
SOPHIA LOREN
HOUSEBOAT
GIG YOUNG - MAMIE VAN DOREN
STARTING SUNDAY

MARK LON MONTGOMERY DEAN
BRANDO CLIFT MARTIN
20th CENTURY FOX PRESENTS ALL THE DAYS AND NIGHTS OF
the Young Lions
Irwin Shaw's monumental best-seller
HOPE LANGE - BARBARA RUSH - MAW BRITT
2nd Hit! A Great Comedy
GARY GRANT
JAYNE MANSFIELD - SUZY PARKER
with Ray Walston & Larry Ryan

ORDER YOUR M.S.U. RING

TM weight \$29.00 & Tx
TX weight \$34.00 & Tx
TXH weight \$39.00 & Tx
\$6.00 Deposit with Order

RANNEY Jewelers
NEXT TO STATE THEATRE
Certified Gemologist
REGISTERED JEWELER
AMERICAN GEM SOCIETY

15c	75c AND \$1.00	25c
H	CHICKEN DINNERS	F
A		S
M		H
B		S
U	Satellite Drive-In	A
R	511 S. CEDAR	N
G	1/2 mile south of Jolly	D
E	Yogi's Drive-In	W
R	2124 S. CEDAR	I
S	Across from Schmidt's Market	C
		H
		E
		S

UNIVERSITY STUDENTS' SPECIAL

YOUR CHOICE OF:
Prime beef open face sandwich au jus—extra large plate—whipped potato—coffee or milk
Roast Chicken—dressing—potato—milk or coffee

IN ADDITION, SAMPLE LIBERALLY FROM ANY OR ALL OF 9 SPECIAL APPETIZERS.

98c

DORM STUDENTS: Looking for a really fine meal this Sunday evening? For the finest cuisine at hard to beat prices be sure to visit ...

"HOUSE OF BEEF"

NOTICE: All meats served by the "House of Beef" are USDA Prime. Nothing but the best for you from ...

"HOUSE OF BEEF"

113 W. MICHIGAN AVE.
(NEXT TO HOTEL OLDS)
Hours: Mon. - Sat. 7 a.m. - 9 p.m.
Sun. 11 a.m. - 9 p.m.
Specializing in: roast beef, round beef, chicken, duck, steaks, etc.
"Food you always remember"

FOR A LONG WEEKEND—
Take Along an Arrow "Time-Saver"

See our selection of Arrow Wash and Wear "Time-Saver"—the shirts that give you perfect styling with more wearing time, less caring time. Superb in 100% cotton or Dacron-cotton blend. Your favorite collar styles in white, solids, stripes. \$5.00 up.

KNAPP'S UNIVERSITY SHOP
STREET FLOOR

THE SHIRT THAT LOVES TO TRAVEL ...

Great for a weekend—travel light with an Arrow Wash and Wear "Time-Saver" shirt—just wash, drip-dry, and you're ready to go. Lasting fit in wrinkle-resisting 100% cotton oxford, broadcloth, or Dacron/cotton blend—all with the famous soft roll button-down collar. \$5.00 up.

ARROW

Each Saturday see the NCAA football "Game of the Week"—ABC TV—sponsored by ARROW.

Air Sex and Censorship Sunday Over Viewpoint

"Sex, censorship and D. H. Lawrence," is the topic for discussion on WKAR's "Viewpoint" Sunday at 2 p.m. Major John Barron, host for the series, will have as his guest Dr. John Waite, assistant professor of English.

"The best descriptions of the sexual experience in English literature are contained in Lawrence's 'Lady Chatterley's Lover' and also in 'Rainbow' and 'Women in Love,'" said Barron.

"In Lawrence we also have one of the most superb stylists in English—a man of the most powerful vision of what man might be," Barron continued.

"The book has two themes, one is the relation between a man and a woman, and the other is the relation between man and machines," he said.

Sunday's program will be the first in this year's series, "Viewpoint" is beginning its fourth season on the air.

Important and timely topics are presented by members of the faculty in discussion as guests of Barron. More than 130 members of the faculty and staff have come to the show in its three years of broadcasting. "Viewpoint" is carried by radio stations throughout the state, including three in Detroit.

It is an unscripted program with no script. Barron researches the topic and makes notes that can be turned into comments and questions.

Barron, a professional Air Force officer with 18 years of service, originally began "Viewpoint" at Pepperell Air Force base in Newfoundland in 1954.

Barron brought the idea for "Viewpoint" with him to MSU. Other topics planned for the quarter include Behind the Steel Striker's General Johnson; The World's Greatest Curiousities; List; Students Talk About the University; and John Dewey, Philosopher of Education.

Petitioning

Today is the last day of petition for Water Carnival positions. Petitions for executive board and committee chairmanships must be in the Union course box or 317 Student Services by 5 p.m.

WMSB Plans Campus Coverage

On-the-spot coverage of campus activities will play an important part in WMSB programming this fall, according to Bruce Howard, station manager. Saturday, for the first time in Michigan, a soccer game will be telecast live, when State meets Wheaton College. Regularly scheduled visits to the library for discussions with university faculty and students are planned. "There are so many lively, stimulating things happening on campus that the university station can't afford to stay inside its own walls all the time," said Dr. Irving Merrill, director of research and promotion at WMSB.

"KEWPEE'S"
DINNER SPECIAL
FRIED PERCH
Mashed Potatoes
Hot Vegetable
Roll and Butter
49c
RALPH'S
"KEWPEE'S"
CAFETERIA
AN IDEAL PLACE TO EAT — TV TOO

PIZZA PIT
RESTAURANT
FRIDAY SPECIAL
Lake Perch Fillets, Mashed Potatoes & Butter, Cole Slaw, Bread & Butter, Tea or coffee.
80c
Pizza Delivery — ED 2-0863
HERE!
203 MAC AVE — DOWNSTAIRS

NOW SHOWING! MICHIGAN
...IT'S WHAT GOES ON WHEN THE LIGHTS GO OFF!
ROCK HUDSON
DORIS DAY
PILLOW TALK
TONY RANDALL **THEM RITTER**
Shown at 1:15, 3:15, 5:15, 7:15, 9:25 p.m.
SOON: "THE BEST OF EVERYTHING"

Headquarters for Jockey Brand Shorts
KNAPP'S UNIVERSITY SHOP
KNAPP'S STREET FLOOR

Who said it first?
A column of incidental intelligence by Jockey brand

"APPLE OF THE EYE"
For this overused phrase, we must turn to the world's richest source of quotations—the Bible. Specifically, the Old Testament, Deuteronomy, XXXII, 10. "He kept him as the apple of his eye."

"ALL IS NOT GOLD"
Seems like everybody had a crack at this piece of homely philosophy, but the originator seems to be Geoffrey Chaucer, in "The House of Fame", Book I. "Not is not all gold that gleameth."

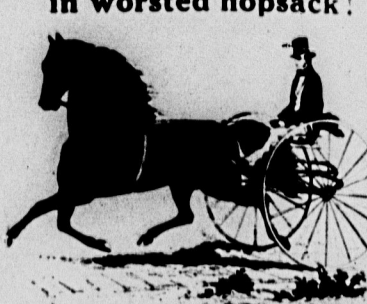
"COURT 10..."
Was there any limit to the talents of Thomas Jefferson? Statesman, scientist, architect—he also authored this admonition: "When angry, count ten before you speak; if very angry, a hundred."

Jockey T-Shirts
The most respected, creative name in underwear is Jockey brand. It stands to reason, then, that Jockey brand T-shirts are unmatched for quality as well as styling. You can choose from standard crew neck T-shirt, "paper-tee" shirt, sleeveless T-shirt, and V-neck T-shirt models. Every man needs a drawer full of T-shirts—and the label to look for is Jockey brand. Let it guide you to the world's finest underwear.
fashioned by the house of **Cooper**

SENIORS
Return senior picture proofs to Delma representative on fourth floor of Union

CIVIC CENTER 8 P.M.
THURS. 12 NOV.
JAZZ FOR MODERNS
STARRING
Dave Brubeck Quartet
FEATURING
Paul Desmond
★ ★ ★
Chris Connor
★ ★ ★
Chico Hamilton Quintet
★ ★ ★
Maynard Ferguson & Orchestra
★ ★ ★
Dave Lambert Trio
★ ★ ★
Leonard Feather
\$2.00, 2.50, 3.00, 3.50
TICKETS ON SALE AT CAMPUS MUSIC 217 E. GR. RIVER
PINO'S — FRANDOR
PARAMOUNT—103 E. MICH
DISCOUNT ON 20 TICKETS OR MORE & MAIL ORDER
WRITE OR CALL CIVIC CENTER

Faster, Bucephalus! I must get my DON RICHARDS NATURAL-SHOULDERED CLASSICS in worsted hopsack!



Not a moment is to be lost! No ordinary suits, these; but Natural-Shouldered Classics, which ennoble the masculine form as no other clothing can, with soft chest construction and feather-light padding. Don Richards alone tailors pure worsted hopsack with the touch of a master, and for but a few dollars more, I may also have a reversible vest of hopsack on one side and print chalis on the other. Press on, Bucephalus! Much may be gained by acquiring this royal robe forthwith.

Buy and wear your clothing now, pay later on our Budget Plan.
• Pay 1/3 in 30 Days
• Pay 1/3 in 60 Days
• Pay 1/3 in 90 Days

KNAPP'S Store for Men
STREET FLOOR

KWIK STOP SUPERETTE **KLOCK RESTAURANT**
OPEN 7 AM - 2 AM OPEN 6 AM - 3 AM
NOW DELIVERING
YOUR FAVORITE BEVERAGES & GROCERIES PARTY SPECIALTIES IV 4-7971
CORNER OF KALAMAZOO & CLIPPERT
PIZZA COMPLETE DINNERS LATE SNACKS
IV 7-5997-98

1960 COLLEGE GRADUATES
Here are the opportunities you have been seeking! Investigate our top salaries and excellent opportunities that prepare you for technical and administrative responsibilities.
Production Management Training
Research and Development
Quality Control
Electrical Engineering (installation, testing, and maintenance)
Field Engineering (construction projects at our own plant)
Engineering (planning and development of plant installations)
Industrial Engineering
Industrial Hygiene (Mechanical Engineering degree)
Accounting
Become a member of our future management team. On November 5th, our representatives will be on your campus. Contact Mr. Jack Kinney for an appointment.
INLAND STEEL COMPANY
East Chicago, Indiana

SOUTH BAPTIST CHURCH
South Washington at Moore River Drive, Lansing
HOWARD F. SUGDEN, D.D., Pastor
DESMOND J. BELL, Asst. Pastor
10 A.M. Bible School
Classes for Young People and Young Marrieds
11 A.M. Morning Worship "PLACED FOR A PURPOSE"
7 P.M. Evening Service "SOME SAYS, 'TUNE HIS TO DEATH'"
8:30 P.M. Adult Youth Fellowship
"CLEAN THINKING ON THE COLDS"

MID-TERMS ARE HERE AGAIN . . .
★ Check Our Paper Bound Book Room for Those Study Aids and Course Outlines. All Major Subject Areas Covered. Assigned Reading Titles.
★ Have Your Pen & Pencil Ready To Go - Complete Service & Refills For All Makes.
★ Blue Books . . . Accounting & Regular.
CAMPUS BOOK STORE
Across From The Union Building

KNAPP'S UNIVERSITY SHOP

STEP OUT in this fine heavy gauge vinyl film raincoat



Neater appearance and extra protection are yours in this waterproof heavy vinyl coat. Electronically sealed-in zipper has snap closing top and bottom. Roomy pockets, slit for easy access to trousers. In Tan, Charcoal, Grey or British Tan; sizes S-M-L-XL in Long and Regular.
\$4.95
KNAPP'S STORE FOR MEN