

NEWS  
YS...  
ANNUAL  
ROOM  
M.  
"SHOP"  
Begins  
THE  
TT RD.  
EKDAYS  
Nordic  
Viking  
\$39.95  
SIZES 38 to 44  
Regulars & Large  
SECTION  
to 155.00  
95 to 90.00  
95 to 10.00  
DENTS  
Lat  
REID  
TER  
m. Saturday  
RN  
RINE

### Grid Wind-Up

Spartans in Miami  
For Finale  
See Page 5

### Girl Parties?

## USG Discusses Mixing Standards

New standard of mixing may be in order for Michigan students.

Bill introduced by Rep. Schumann (co-ops), at Tuesday night's All-University Student Congress meeting centered around "setting new standards for the mixing of students in university approved organizations."

Government is of the opinion that the chaperone regulations as they exist now are obsolete and should be re-examined. Schumann said. He said that Dean of Students King was opposed to the

university constitution that student Government enact such an idea but not be put into practice until the dean of students approves.

calls for students of sexes to be permitted to live in the living rooms and all university-approved housing, providing that at least one member of one sex be present.

provides that no chaperone be assigned by the Student-Faculty Social Committee shall be required, guests must leave no later than 12:30 a.m. on week-ends and 12:30 a.m. on weekdays, finally, living units of holders shall have the responsibility of enforcing these

bill was referred to the Senate Rights and Welfare Committee for further discussion and a report is pending.

to equalize representation. This would amend the present apportionment of representatives.

the present time, off-campus students do not have equal representation because of curfew regulations. Enforcement of this bill was delayed by tabling the

### Union Board Ends Reps Convention

Board members about the Midwest will meet this weekend at Miami Beach, Florida, to discuss problems confronting unions and college unions.

representatives will be Hampton, Bloomfield senior and Union Board president Margaret Fleischer, junior; Judy Hoedaghe, senior; Robert Sanford, junior; John Jordan, Atlanta, senior.

White, Union Board president, and Michael Dmochowicz, Union manager, will accompany the members. Also attending will be George Frits, Oakland Union manager.

union leaders will be represented from each college or university. Hoffmeyer will be the district leader from MSU and discuss the effective use of union services.

union representatives selected from Ohio State, Iowa, University of Michigan and Western Michigan.

### Men Initiated to Honorary

Men were tapped for the annual initiation ceremony Thursday night in the Green Room of the Union.

were Lee Tunney, Kalamazoo, senior; Bill Mitchell, River, Ohio, junior; Martin, Bloomfield senior; Smith, Lansing senior; Ellis, Birmingham junior; William Durrell, Hamburg, junior; Ed Rowing, East Lansing senior; Robert Swanson, Farmington, Ill., senior; and Renbarger, East Lansing senior.

membership for the junior men's honorary is based on contribution to the university and scholarship.

# Michigan State News

Serving MSU For 50 Years  
EAST LANSING, MICHIGAN—FRIDAY, NOVEMBER 20, 1959

### The Weather

Mostly Cloudy  
High Today ..... 38  
Low Thursday ..... 18

PRICE 5 CENTS

## MSU Briefs

### Rush Begins Saturday

Sorority rush will begin Saturday at 12:30 p.m. with fall teas. Sunday's teas will begin at 1:30 p.m. Some 1,240 guests are expected to attend the weekend parties given by all 20 sororities. Rushes are asked to wear a wool dress, heels and a hat and gloves for this stage of rush.

### IFC Picks Chairman

Gary Sherman was named 1960 IFC Greek Week chairman Wednesday at the presidents assembly meeting. A Vicksburg senior and member of Alpha Gamma Rho, he was chairman of last year's IFC Sing. Panhellenic Council's chairman has not yet been chosen.

### Mag Sales Continue

Spartan Engineers sales continue today in Olds Hall, Electrical Engineering and the short course cafeteria. Sales will begin at 9 a.m. and continue until remaining copies are sold out. Eighty percent of magazines were sold in the first two days of sale.

### Last Day For Proofs

Today is the last day to return senior picture proofs to the Delta representative on the fourth floor of the Union. Seniors not purchasing pictures should select one pose to appear in the 1960 Wolverine.

### Socialist Club to Meet

"Social Workers and Socialists: Have They Anything in Common?" will be the topic of a talk Sunday by Dr. Walter Friedlander, distinguished visiting professor of social work from the University of California. The talk, sponsored by the Young Socialists Club and open to the public, is scheduled for 8:30 p.m. in the Union.

### Senior Ball Petitions

Petitions for Senior Ball chairman and committee members will be available in the Union concourse through Saturday. Open positions include chairmanship of decorations, publicity, favors and programs, guests and chaperones, band and secretary.

### Lab Period Moved

AFROTC leadership lab scheduled for 10:00 Monday will meet in 326 Nat Sci, according to Capt. Donald McClure, associate professor of air science. All other meetings will be at regularly scheduled times in the Music Aud. he said.

### Statistician Sets Talk

Dr. W. D. Bates, agricultural experiment station statistician and professor of statistics, will talk on "Lot Plot Techniques" at the State University of Iowa today.

### Milk Carton Fire?

Fire trucks were called to East Shaw Thursday night at 11:25 to investigate a report of smoke. They found no fire. Bystanders said the smoke smelled like someone had burned a milk carton in the hall.

### Campus Chest Closes Charity Drive Today

Today is the last day of Campus Chest's annual fall fund drive. The drive began on Monday.

General chairman Nancy Sarow, Seginaw junior, has requested that all contributions be turned in today between 4-6 p.m. to the Campus Chest office, 330 Student Services.

Money received will be divided on a percentage basis among the charities supported by Campus Chest.



MEMBERS OF the University Symphony Orchestra are framed by the grand piano cover as they practice for their first concert of the school year Sunday. See story page 3.

## Adenauer Satisfied British-German Fog Lifts in Conferences

LONDON (AP)—To the tune of cheers from a British crowd, Chancellor Konrad Adenauer went back to West Germany Thursday satisfied that he and Prime Minister Macmillan had cleared away some of the fog of British-German distrust.

### Water Carry Exec Board Announced

The executive board and committee chairman selected to head the 1960 Water Carnival were announced recently by Matt Surrill, general chairman.

Executive board members include: Bob Hutchinson, Production; Carol Gower, Theme and Continuity; Carole Kozuck, Programs; Dick Shapiro, Publicity; Scott Morrison, Judges and Trophies.

Bill Pilgrim, Band; Arnie Roberts, Public Relations; Glenn Hartman, Tickets; Bob Foley, Water Sports and Sidelights; Dick Nelson, Purchasing.

### Government Approves Berry Labeling Plan

WASHINGTON (AP)—The government Thursday approved a labeling plan it said will enable American housewives to buy Thanksgiving cranberries without fear they may be tainted by a cancer-producing weed killer.

The plan calls for speeded-up testing by both federal and industry chemists in an effort to clear as big a volume of berries as possible before the holiday.

### Counseling Tests May Be the Answer A Solution to Many Problems

MSU's counseling center has one of the finest testing departments of any university. The use of its services can be valuable in helping students plan their future careers.

Students who are undecided about their choice of major, or have academic problems or reading problems and want to know more about their capacities are most apt to utilize testing services.

Gwendolyn Norrell, supervisor of the testing room, said that such cases are illustrative of the kinds of problems where psychological tests may be of value in counseling to the student who visits the Counseling Center.

# Tax Again Stymied

## Republican Senators Can't Agree

Morning Meeting Scheduled Today

By JOAN DEPPA  
State News Capitol Reporter

Republican senators failed again Thursday after four caucuses to reach any agreement in the current tax stalemate.

They came out of caucus at 9:50 p.m. Senate majority leader Frank Bessie (R-St. Clair) said, "We can't get an agreement on any kind of tax."

"I know it's as discouraging to everyone outside the Legislature as it is to those inside," he said. "Any potential tax is in suspended animation, but anything can happen."

The Senate GOP will caucus again at 9 a.m. today.

Debate on the Senate floor continued to center around resolutions which would place tax proposals on the ballot in November 1960.

At noon Thursday the senators came out of their caucus to announce that they would insist on passing the proposals which would allow voters' expressions on the sales tax hike and on the personal and corporate income taxes.

After meeting briefly the GOP senators returned to closed door sessions for most of the afternoon.

A floor fight followed as Sen. Stanley Rozzycki (D-Detroit) proposed a two percent ceiling on personal income taxes and a six percent limit on corporate profit tax. In this amendment to the resolution which would place the corporate profit tax before the electorate, he included a two mill corporation franchise tax and a repeal of the business activity tax.

But Rozzycki added that he would not vote for any of the resolutions until the state treasury was given a cash infusion.

Sen. Edward Hutchinson (R-Fennville) rose to point out that this would only box in legislative neck. The amendment failed to pass although another amendment proposed by Hutchinson to enable passing of a plan-back tax (a tax based on a federal income tax) was adopted.

After fruitless reconsideration of the Rozzycki amendment, the Senate adjourned until 10 a.m. today, and Republican members headed for another caucus.

## NEWS IN BRIEF

### Quiz Report Hushed

NEW YORK (AP)—General Sesseloops Judge Mitchell Schwartz ruled Thursday that he will not make public the report of a grand jury that speared the probe into alleged television quiz shows. Where private citizens are involved, the function of the grand jury ends when it determines that no crime has been committed," said Schwartz.

### Union Refuses New Steel Offer

PITTSBURGH (AP)—The steel industry Thursday disclosed a new offer to end the long labor dispute with the United Steelworkers. The union rejected it as "something only a company-controlled union would accept."

R. Conrad Cooper, chief industry negotiator, said the offer would mean a 30-cent hourly package over a three year period.

USW President David McDonald called the proposal a rearrangement of "the same old package offered by industry Oct. 17." He said the new proposal would mean a gain of 24 cents an hour over the three years.

### Ore Carrier Grounds

SAULT STE. MARIE (AP)—The 600-foot ore carrier Richard Trimble went aground Thursday in the St. Mary's River after passing downbound through the Soo Locks.

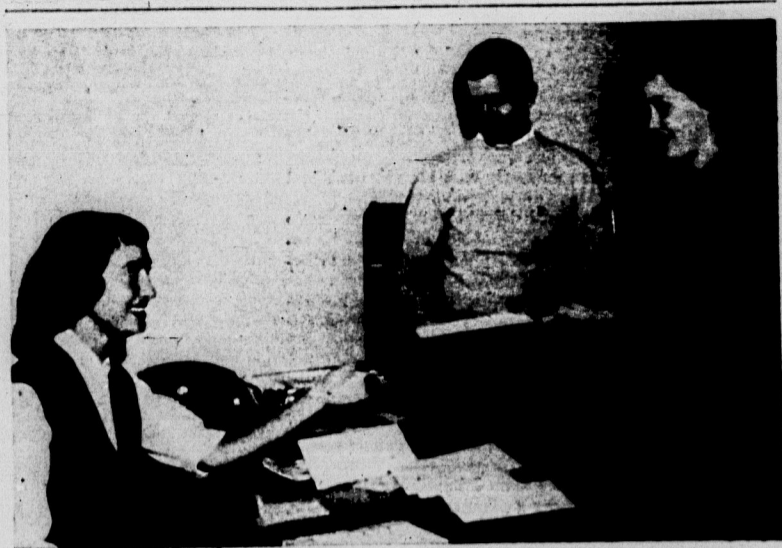
### To Investigate DJ's

WASHINGTON (AP)—Disc jockeys in at least half a dozen major cities are coming under the scrutiny of House investigators looking into bribery charges.

"Our aim is to get a general picture of the entire Payola racket," said Raymond Martin Jr., an aide of the House Legislative Oversight subcommittee.

### Mateos Accepts Invite

MEXICO CITY (AP)—Mexico's President Adolfo Lopez Mateos Thursday accepted in principle an invitation to visit Russia, Foreign Minister Manuel Tello reported.



NANCY SAROW (l.), chairman of Campus Chest's fall fund drive, accepts donations from Sandra Seppala and Paul Burbage. Last day donations for the drive may be turned in at 330 Student Services between 4-6 this afternoon. Miss Sarow said. See story column 2.

State News Photo by Jerry Holmes

## Trustees OK \$35 Million Request MSU Asks Budget Hike

MSU asked the state of Michigan Thursday for a \$7,601,453 boost in its appropriation for the 1960-61 fiscal year, as the Board of Trustees approved the request for a total \$35,471,221 tentative budget.

The appropriation request has been sent to the state budget division, the first stop on its travel through administrative and legislative offices before a final vote of both houses next spring.

The sum is about \$4 million

more than university officials asked last year. The 1959-60 request was cut \$3 million by Governor G. Mennen Williams and an additional half million dollars by the legislature before it received final approval.

Four separate appropriations comprise the request: \$28,069,220 for East Lansing operations; \$1,065,495 for MSU-Oakland; \$2,874,600 for co-operative extension; and \$3,461,906 for the agricultural experiment station.

The board is seeking \$3,620,702 more for the East Lansing university than it is scheduled to receive for the current fiscal year.

Planning an increased enrollment, 21,400 students compared to this fall's 20,309, 142 instructors will be needed, requiring \$1,065,000.

More funds are also drastically needed for equipment, university officials say, and they seek an increase of \$1,199,682 in this area.

The board also moved to ask the Senate Appropriations Committee for a hearing on a now-shelved \$12 million bill for capital outlay to state-supported higher educational institutions.

The bill was held up pending the use tax decision but has not yet received action. Its passage would mean more than \$5 million for MSU, including \$2,750,000 for an Ad Bldg. addition, \$2,200,000 for a classroom building and \$100,000 to house facilities for research on TB in cattle.

Dr. Hannah pointed out that delay in passing the bill would put off start of construction to probably 1963.

### 'Situation Wanted' Begins Saturday On WKAR Radio

"Situation Wanted," a 26-part series on unemployment, will begin Saturday at 1 p.m. over WKAR radio.

The program will discuss the various aspects of unemployment including migratory, old-age, young without experience and handicapped workers.

"Situation Wanted" is produced and narrated by Al LaGuire, producer-director of WKAR. The show will present taped interviews with people who are now unemployed. Their problems will be discussed and analyzed.

### Talent Group Performance Slated Tonight

A talent show with an international flavor will be presented tonight.

Built around student talent, the annual event, led by Dave Heber, Junior Council president, will be held in the Union Ballroom at 8.

The talent show is designed to acquaint students with some of the entertainment styles representative of different countries, said Mohammed Haniff, president of the International Club, sponsoring group.

Folk dances from Colombia, the Philippines, India and the Bahamas will be performed. A demonstration of "raga" will be featured by the Indian representative.

### Club Award Winner Discusses Marketing

Marketing appraisal is important to America to insure healthy growth and progress.

Daniel Bloomfield, recipient of the annual MSU Marketing award, made this observation Thursday night before the MSU Marketing and Transporting Club in Kellogg.

The honor was bestowed for Bloomfield's program contributions to the Boston Conference on Distribution for the past 20 years.

Bloomfield, in his acceptance speech, said the two problems in research are semantics and understanding by management.

### Club Award Winner Discusses Marketing

Marketing appraisal is important to America to insure healthy growth and progress.

Daniel Bloomfield, recipient of the annual MSU Marketing award, made this observation Thursday night before the MSU Marketing and Transporting Club in Kellogg.

The honor was bestowed for Bloomfield's program contributions to the Boston Conference on Distribution for the past 20 years.

Bloomfield, in his acceptance speech, said the two problems in research are semantics and understanding by management.

### Club Award Winner Discusses Marketing

Marketing appraisal is important to America to insure healthy growth and progress.

Daniel Bloomfield, recipient of the annual MSU Marketing award, made this observation Thursday night before the MSU Marketing and Transporting Club in Kellogg.

The honor was bestowed for Bloomfield's program contributions to the Boston Conference on Distribution for the past 20 years.

Bloomfield, in his acceptance speech, said the two problems in research are semantics and understanding by management.

### Club Award Winner Discusses Marketing

Marketing appraisal is important to America to insure healthy growth and progress.

Daniel Bloomfield, recipient of the annual MSU Marketing award, made this observation Thursday night before the MSU Marketing and Transporting Club in Kellogg.

The honor was bestowed for Bloomfield's program contributions to the Boston Conference on Distribution for the past 20 years.

Bloomfield, in his acceptance speech, said the two problems in research are semantics and understanding by management.

# TGIF Drinking Rules Called Unrealistic

By BILL CALLAHAN

**THE RECENT ADO** over the suspension of three students from the university for "a violation of housing regulations" has been boiling around inside me since I first heard of it.

No one, including the students involved, seems to know just what constituted the violation, but in the absence of any evidence to the contrary it seems to be a case of drinking in student housing.

This is, as everyone knows, outlawed by the rule book, and any student unfortunate to get caught at it cannot gripe too much about suspension or other disciplinary action he might be subjected to.

**THE RULES EXIST**, and those who get caught violating them must admit the violation.

This does not in any sense imply that the rules are just or have any sensible basis.

The official attitude toward drinking at MSU seems to be that if the line that students do not drink can be repeated often enough, the general public will come to believe it.

This is thought to be necessary because MSU is a state supported institution. Since the university depends on the legislature for its budget appropriations it fears that any "disreputable" conduct by students might have an adverse effect on the size of appropriations.

**THIS IS ALL** understandable, but it still has no relation to fact. The fact is that students do drink. Saying they don't is not only false, but tends to create a double standard.

If I had a dollar for every time I heard the idea that it's all right to drink—as long as you don't get caught—I would probably have no need to continue studying. I would already be wealthy.

This idea of a double standard does not seem to fit in with the concept of what a university should be. It would be refreshingly honest to admit that MSU's 20,000 students are not just some unique species, but are 20,000 human beings, complete with all the usual virtues, vices, strengths and weaknesses of any other 20,000 persons.

Entering college does not essentially change one's basic personality or transform him into any sort of paragon of virtue. To paraphrase Mr. Kipling: single men (or women) in dormitories don't grow into plaster saints.

**A CERTAIN PERCENTAGE** of the student body is going to drink. They are going to drink regardless of the actions of the legislature, and probably in nearly total ignorance of doings in the Capitol.

This isn't argument; it's a statement of fact that everyone might just as well face. The university certainly has every right to prohibit and discourage drinking on university property if it chooses to do so. But I cannot see from where it derives any right to regulate the peaceful and lawful conduct of students while they are off campus or in their own homes.

**IT CERTAINLY** doesn't make sense to interrupt a student's education over some triviality such as drinking beer in his home.

If the people of Michigan would rather curtail their system of higher education than face facts, then perhaps we are not so far from Little Rock as we like to think.

## "Your Slip's Showing"



"Block is away due to illness"

Copyright 1959 The Pulitzer Publishing Co.  
St. Louis Post-Dispatch

### Letters to the Editor

## Army Called Resource Waste

**To the Editor:**

In Robert Sorague's recent letter to the State News, he said we who object to ROTC ignore the real reason why it is taught. The real reason, which probably isn't recognized by anyone in the course, is that it should prepare people for the part of their lives that they will give to their country and to preserve freedom.

It is very important that we have highly trained men to serve this country. Insofar as ROTC fulfills this goal, it is necessary.

But the armed forces are acting neither to serve our country or to preserve freedom. The war with Russia which they are trying to avert is going on right now.

Russia has officially challenged us to a race to help underdeveloped countries. And we are trying to meet this challenge with an army. It can't be done this way.

The best way to serve our country is to wake its citizens out of their self-centeredness. The most pressing need in the preservation of freedom is to create freedom for a billion neighbors who are now chained by the ignorance and poverty.

If ROTC will prepare young men to serve, it is very important. If it prepares us to make a strong army, it only perpetuates one of the world's greatest wastes of human resources.

Wayne Stowe

**Sour Grapes?**

**To the Editor:**

It seems to me, after reading the articles in Wednesday's State News, that MHA is crying "sour grapes." They mean that the Greeks take over all the Water Carnival committees. Granted, they do, but who gets out and handles these "committee" things?

(Concerning the article about deferred rush, there is no obligation on a man to rush or pledge at any time. An individual may rush whenever he wishes, so why stop those who choose to rush their first term? Why should we hold first term freshmen captive in a free society?)

Jim Strader

### INFORMATION

- FRIDAY**
- GAMMA DELTA**  
7:30 p.m., Martin Luther Chapel. Swimming party.
- CHRISTIAN STUDENT FOUNDATION**  
8 p.m., Peoples Church. Gay Caravan, Folk-Ballad Singer. Public invited.
- CANTERBURY CLUB**  
8 p.m., All Saints Church. Game night.
- HAWAIIAN CLUB**  
8 p.m., 3rd floor Library.
- SATURDAY**
- WESLEY CHOIR**  
11 a.m., Wesley House. Practice.
- HILLEL**  
8 p.m., Hillel House. Married students—short meeting followed by bowling.
- SUNDAY**
- CHRISTIAN STUDENT FOUNDATION**  
9:30 a.m., College House. Student forum.  
7 p.m., College House. Campus Vespers. Topic, "Work and Prayer." Panel discussion.
- CATHOLIC STUDENT ORGANIZATION**  
8:15 p.m., Catholic Student Center. Sunday forum.
- WESLEY FOUNDATION FORUM**  
7 p.m., 31 Union. "What a Difference a Faith Makes as Lay People"
- FELLOWSHIP OF RELIGIOUS LIBERALS**  
7:30 p.m., Forestry Cabin. Social.
- EVENING VESPERS**  
8:15 p.m., Martin Luther Chapel. Choir supper.
- GAMMA DELTA**  
6 p.m., Martin Luther Chapel. Choir supper.
- HILLEL**  
6 p.m., Hillel House. Spaghetti supper. Prof. Myrtle Reul will discuss "Marriage and Love in Current Literature."
- STUDENT CLASS**  
11:30 a.m., University Lutheran Church.
- LSA SUPPER CLUB**  
5:30 p.m., University Lutheran Church. Dr. Beulah Hedahl—"God's Will in Vocation."
- CANTERBURY CLUB**  
6:30 p.m., All Saints Church. Evening prayer and supper followed by discussion "Can We Affirm Christian Unity?" led by Rev. G. Jones.
- YOUNG SOCIALISTS**  
8:30 p.m., Union. Dr. Walter Friedlander, distinguished visiting professor of social work of the University of California, will speak on the topic, "Social Workers and Socialists: Have They Anything in Common?" All welcome.

## Interpreting The News

J. M. ROBERTS  
AP News Analyst

Three things occurred Wednesday to indicate the trend of discussion which will take place during the next several months before a summit conference.

The Soviet Union reiterated that it didn't intend to try to throw anyone out of West Berlin, but repeated its threat to sign a separate peace treaty with East Germany unless the allies agreed to get out.

Dean Acheson, former American Secretary of State, described the kind of negotiations the Russians want as dangerous and a possible cover for allied surrender.

Great Britain assured West Germany that her willingness to talk about limiting armed forces and the Berlin problem did not mean she was entertaining any idea of military disengagement in Central Europe.

Acheson was one of the prime movers in the North Atlantic Treaty Organization which the Soviet is trying so hard to scuttle. He now takes his stand beside German Chancellor Adenauer and French President De Gaulle, against the British belief that talk in itself is a help, and against the agreement of the United States to go along with the British although less firmly convinced of the negotiation's value.

On the point of disengagement, the United States has only recently reiterated that planned troops cuts do not have anything to do with her firm intent to keep her divisions facing the Russians in Germany.

The developing West German army and the proposals that Britain and France are sufficiently strong economically to assume more of the military defense burden are not directly concerning.

United States forces in Germany alone would cut little ice against an all-out attack. But just by touching them the Soviets would pull the trigger on all-out war. The assurance that the United States would be fully immediately and automatically involved is considered by Europeans as second only to the dangers of nuclear war as a deterrent.



## Book Review 'Duveen', Life of a Connoisseur

Duveen  
By S. N. Behrman  
Modern Library Paperback  
95 cents

Behrman in this book has created an absorbing portrait of a figure known to connoisseurs of art, but not perhaps to the general public.

Joseph Duveen started from very humble beginnings at the turn of the century to emerge finally as the virtual dictator of American taste in art. His dealings in art were based on one major principle: Europe was filled with paintings and owners who could no longer afford to maintain them. America, on the other hand, was filled with a growing number of millionaires who could afford these expensive paintings and who wanted to purchase them.

Duveen's market then, was directed exclusively toward the new rich in the United States. He helped build up collections for such men as Mellon, Frick, Kress, Rockefeller, Morgan and Altman.

Certainly a very interesting part of Behrman's book deals with the question of why these rich men spent such great fortunes on paintings they knew were good, only because Duveen told them so.

One reason it seems, was that they all wanted to venerate their "arrivals." They wanted to create, through the possession of a few famous paintings, a feeling of depth and tradition they knew they didn't have.

A Mellon and a Carnegie knew that in spite of their Pittsburgh mansions with all their magnificence, that they were the "nouveau riches" and they hoped by amassing large collections of paintings to cover up this stigma.

Henry Ford, however, seems to be one of the few rich men who did not succumb to the lure of Duveen's paintings.

Duveen, in approaching a prospective client, would prepare an elaborate book of dupli-

cated paintings of the kind he wished to sell. This was to give the client an idea of what he was buying.

Duveen prepared such a book for Ford and took it to him for examination. Ford was properly enthusiastic, especially when he thought the book was for him. Duveen explained it was merely a book of illustrations and that he wished to interest Ford in the originals.

Ford was amazed. "But," he said, "what would I do with the original pictures when the ones right here in the books are so beautiful?"

"Duveen" by S. N. Behrman is not only a fine biography of a famous art dealer, but also an excellent portrait of the men dealt with and the era in which they lived.

John Alden

## Michigan State News

Read Daily by MSU's 25,000 Students and Faculty

The Michigan State News is published by students of Michigan State University, East Lansing, Mich., without direct faculty supervision. It is not the official voice of the university or of the student body, but while seeking to serve the best interests of both, it stands ready to handle any matter which would drive a wedge between them, whether it comes from within the university or from outside. Managing Editor: Associated Press Inland Daily Press and Associated Colleges Press.

Vol. 51, No. 101 Friday, November 20, 1959 Page 1

## CAMPUS CLASSIFIEDS

DEADLINES: 1 p.m. Day Before Publication for Tues., Wed., Thurs., and Fri. Editions. Deadline for Mon. Edition: 1 p.m. Fri. Bills Payable 8-12 and 1-5 Monday through Friday

ED 2-1511 EXT. 2615

<h3>AUTOMOTIVE</h3> <p>1958 CHEVROLET IMPALA convertible. Full motor. \$1750. 1962 Mercury. \$225. ED 2-2606 40</p> <p>BATTERY SALE—Six volt. \$10.95. twelve volt. \$14.95. Exchange. Russell Mobile Service. 2522 E. Michigan. Lansing. ED 2-1490 49</p> <p>1954 PLYMOUTH 8 standard shift. 4-door. Radio. Heater. \$250. Contact Irene. Ed. 2618. 8-5-50 40</p> <p>TAKE A DEMONSTRATION RIDE to the 1960 Ford or Ford Falcon. Contact Gene Seiden at Max Curtis. Ed. 2-2004. 45</p> <p>1958 FORD SEDAN. Good motor and body. Two door. \$80. ED-2-7087 41</p> <p>1958 FORD MUSTANG. Good motor and body. Two door. \$80. ED-2-7087 41</p> <p>1958 FORD MUSTANG. Good motor and body. Two door. \$80. ED-2-7087 41</p> <p>1958 FORD MUSTANG. Good motor and body. Two door. \$80. ED-2-7087 41</p> <p>1958 FORD MUSTANG. Good motor and body. Two door. \$80. ED-2-7087 41</p>	<h3>FOR SALE</h3> <p>21" PHILCO TV. mahogany table model. Wrought iron stand. Excellent condition. Phone IV 9-5517 on week-end 40</p> <p>BABY PARAKEET and one. Contact A-528. Rafter Hall. ED-2-2581 40</p> <p>1957 ELCAR ONE bedroom. Excellent condition. 8 x 38. Phone ED-2-7016 after 5 p.m. 40</p> <p>ALMOST NEW BLONDE oak combination expanding desk-table with four chairs. \$75. See advertisement. Write full address to Avalantic Ski Club. Bismarck, N.D. ED 2-2579 40</p>	<h3>PERSONAL</h3> <p><b>The Bud-Mor Agency</b></p> <p>featuring SMITH JACKMAN, JACK SMITH, ROBBY STEVENS, HARRY JACKSON, THE VALLIERS</p> <p>Phone IV 2-0624 plus many others</p> <p>ELDON GATES DANCE Co. Music provided in the mood of event. Phone IV 3-6293 IV 3-6111 40</p> <p>JOYCE ENDRES and her Zebra take this ad to the State office between 2-5 p.m. on the 23rd floor of the State Building, L.I.D.</p>
<h3>EMPLOYMENT</h3> <p>HELP WANTED: SKI instructor with administrative ability. sex appeal and self-restraint. to teach conversational, bratis and economic. Salary ability secondary consideration. Ph.D. preferred but will settle for M.A. Graduate without unusual ability. \$100 per week guarantee starting December 20th, with overtime pay. Write full address to Avalantic Ski Club, Bismarck, N.D. 40</p> <p>MALE JUNIOR OR SENIOR student majoring in accounting is wanted to work part time as bookkeeper and manager of a business. Business: Plano Toner. IV 2-1471. Leave name and phone 42</p> <p>PART-TIME POSITION open to men with car to work locally. Income will be \$100 per week plus bonus. No investment. Apply 315 E. Michigan. Lansing. 8 a.m.-5 p.m. 44</p>	<h3>HOUSING</h3> <p>TWO BEDROOM HOUSE, completely furnished wall-to-wall carpeting. Garage. Lansing. ED 2-9159 40</p> <p>MARRIED COUPLE to take charge of one house at 288 Bailey St. one block north of downtown. Phone 49 to Florida. Half rent. ED 2-2961 42</p> <p>EAST LANSING DUPLEX with large rooms and bath. Use of 1/2 of detached. Fully furnished except stove and refrigerator. 608. Also utilities. Available immediately. Adults. ED-2-3789 40</p> <p>EMPLOYED WOMAN to share home. Own transportation. ED-2-4518 40</p> <p>FURNISHED HOUSE FOR six month lease. low rent. Renting student preferred. Inquire at 201 S. Francis St. Lansing. 40</p> <p>DOWNSTAIRS, CLEAN REDECORATED, steam heated. Three rooms. bath, stove, refrigerator. Utilizing Garage. basement. IV 4-4860 40</p> <p>UNFURNISHED SMALL HOUSE in E. Lansing. Garage. Gas heat. Couple preferred. Available Dec. 1. ED 2-1488 40</p>	<h3>APARTMENTS</h3> <p>FIVE ROOM, FURNISHED apartment for rent. Four older students. Utilities, parking. ED 2-9005 or IV 9-8181 40</p> <p>THREE ROOM FURNISHED apartment. Utilities paid. Private entrance and parking. Two blocks to shopping and bus. Couple or woman. ED 2-5182 40</p> <p>FURNISHED APARTMENT in East Lansing. nice campus and close. Three rooms and bath, first floor. Utilities paid. Parking. Married couples or ladies only. IV 9-7132 41</p> <p>ATTRACTIVE TWO BEDROOM apartment. one block from dining and drive. Adults. 128 Durand. ED-2-4886 40</p> <p>MEN DON'T BE satisfied with inferior housing when you can live better for less at Howland Co-operative House. Contact Tom Beason. ED-2-6522 for information. 40</p> <p>APPROVED DOUBLE ROOM. Bunk beds. One available at once. both at end of term. ED 2-4661 41</p>
<h3>FOX HOLE P.K.</h3> <p>Flander Center IV 9-1017</p> <p>MI-FI COMPONENTS at half original cost. McIntosh 30 watt amp. McIntosh C-9 pre-amp. AR-2 speaker unit. Guard changer with GE timing headie. Complete neckless. \$2000. ED 2-6080 40</p> <p>USED TV REFRIGERATORS, ranges, washing machines, good condition. As low as \$25. Goodway Service Store, 1110 E. Michigan. 41</p> <p>ING BREAKFAST BONUS</p> <p>GOOD Coffee FRESH Spudnuts QUICK Service</p> <p>SPUDNY SHOP</p> <p>212 MAC Open 6 a.m.-6 p.m.</p> <p>SIX TRANSISTOR RADIO, regular \$8.95. Now in case, special \$5.95. 50-watt vacuum tube. North Prescription Center next to National Foods by Transfer. IV 9-1088 41</p>	<h3>1001 OTHER STUDENT AND FACULTY BARGAINS</h3> <p>2 Hydraulic pump 3 Protection against rain 4 Gum obtained from acacia 5 Cistern 6 Told an untruth 7 Terminated 8 Offset</p> <p>9 Scent 10 Small pig 11 Very much 12 Fabulous bird 13 Footlike part 14 Trenches 15 Small piece of ground 16 Humorous person 17 Clever respondent 18 Geological division 19 Write 20 Archbishop 21 Woodchuck 22 Amer 23 Eberly 24 Spring saw 25 Confronted 26 Frenchman 27 Alphabetic character 28 Ireland 29 One of Columbus' s. 26 30 H. H. Willce 31 Correlative of neither 32 Tibetan gazelle</p> <p>Solution of Yesterday's Puzzle</p> <p>ACROSS 1. Indeed Irish 4. Capable 8. Horribly 12. Sweet potato 13. Shower 14. Jewish month 15. Hugged 17. Learning 19. Seal 21. In core 24. Scouting group 25. The entire number 26. Intimidate 28. Indian trophy 32. Feeler 34. Old horse 36. Pa. lakeport 37. Gaze fixedly 39. Vapor</p> <p>41. Dress leather 42. Unpropitious 44. Irresponsible 46. Mischievous 50. Ship-shaped clock 51. Emanation 52. Restrictive adjective 56. Fixed quantity 57. Indigo plant 58. Soft murmur 59. Unspirated 60. Watchfulness 61. Epoch</p> <p>DOWN 1. Affirmative vote</p>	<h3>Crossword Puzzle</h3> <p>DIY CHAIR ORA FAME WALLY ACTORS GREAT ALL GREAT HAPPEN GIRL ZIM MAI IS RAVED RO VEY ACES PEEM ENEMIES GRADE SAC ANNA MAYER PATTED AGE ROPED OVE POP STARE RAN</p>

One Didn't Fade Away!

# Ford Announces Stoppage Of Edsel Car Production

Ford Motor Company today announced that one of its most popular cars, the Edsel, will be discontinued after only 23 months of production.

The Edsel, however, made a formal statement that Edsel will be dropped immediately. Eighteen Edsels were built Wednesday at Louisville, Ky., the only Edsel plant. "They were special orders," a Ford spokesman said, "although now I don't know whether the buyers will want them."

The birth of the Edsel, too, was first disclosed in the prospectus issued in December 1955, when the foundation first put Ford stock on public sale.

## Glen Taggart's Pakistan Global Tour

The main stop this time is Dr. Glen Taggart, dean of the University of Michigan, who is on a week-long globe-circling tour.

## Critic to View Nature of Art

Alfred Frankenstein, art and music critic of the San Francisco Chronicle, will speak on the question, "What is Modern Art?" Saturday in the staff room of Kresge Art Center.

## Teachers to Visit Physics Department

The department of physics and astronomy will be host Saturday to the Michigan section of the American Association of Physics Teachers.

# Symphony Orchestra Schedules Concert in Fairchild

The University Symphony orchestra plays its first concert of the current school year, Sunday, with Hans Lampl, conductor and Ernst Victor Wolff, pianist, as assistant artist.

The concert opens with Wagner's "Overture to Die Meistersinger," an overture closely knit with the opera it precedes.

The "Pre-Classical Suite" by Paul Creston brings a contemporary composer to the stage. The composition is built on three early dance forms, the Courante, the Pavane, and the Galliard.

Dr. Wolff appears as soloist in the majestic "Emperor" concerto by Beethoven. Karen Olson Mitchell, soprano, will sing the first senior recital of the current year in the music auditorium at 8:15 tonight.

three Italian songs: "Gloria in sol del Gange" by Scarlatti; "Vergin, tutto amor" by Durante; and "Dum, veni non tardar" from the "Marriage of Figaro" by Mozart.

MICHIGAN STATE NEWS  
November 20, 1959 Page Three

# Attend Church This Sunday

## EAST LANSING

### EAST LANSING TRINITY CHURCH

Endenominational  
120 Spartan Avenue  
Rev. E. Eugene Williams, Pastor

**WORSHIP SERVICES**  
8:30  
11:00 a.m.  
"Taking People For Graditude"  
1:30 p.m.  
"Where Are The Others?"

**OTHER SERVICES**  
9:45 a.m. Sunday School with 3 classes for University Students  
9:30 P.M. Buffet Supper  
All University Students Welcome  
7:00 p.m. Wednesday Evening Service

### UNIVERSITY LUTHERAN CHURCH AND STUDENT CENTER

(National Lutheran Council)  
Division at Ann Street  
(Two blocks North of Berkey Hall)  
ED 2-3571 or ED 2-2735

**SUNDAY**  
Morning Worship 9:00, 10:15 and 11:30 A.M.  
Student Class 11:30 A.M.  
Sunday School: 9:00 & 10:15 A.M.  
Nursery: 9:00, 10:15 & 11:30 A.M.  
Student Supper Club  
5:30 P.M.  
Speaker: Reulah Medal, M.S.E., Counseling "Christian Vacation"

### PEOPLES CHURCH EAST LANSING

Interdenominational  
200 West Grand River at Michigan  
Dr. P. Marion Simms  
Rev. Roy J. Schramm, ministers

**SUNDAY SERVICE**  
Sermon by: Dr. Harold N. Skidmore  
Guest Minister  
Church School  
9:30 A.M. 11:30 A.M.  
Crib room through high school age

### CHRISTIAN STUDENT FOUNDATION

148 W. Grand River  
Joseph A. Porter, Minister

**SUNDAY PROGRAM**  
9:30 Student Vespers  
1:00 P.M. Campus Forum

### FIRST CHURCH OF CHRIST, SCIENTIST

200 E. Grand River  
East Lansing

Church Service 11 A.M.  
Sunday School 11 A.M.

Subject  
SOUL AND BODY  
Wednesday Evening Meeting 8 P.M.

Reading Room  
131 W. Grand River

All are welcome to attend Church Services, and visit and use the Reading Room

### ST. JOHN CHURCH & CATHOLIC STUDENT CENTER

Fr. E. Kavanagh Fr. F. Zippa  
327 M.A.C. Avenue

**Sunday Masses**  
7:30 - 8:45 - 10:30 - 11:30  
(Baby sitting at 8:45 & 10:30 Masses)  
Daily Masses 8:45 & 9:00 A.M.  
Confessions Daily 9:00 A.M. & 5:30 P.M. (after hours)  
Saturday 8:30 & 1:30-9:00 P.M.

**CATHOLIC STUDENT ORGANIZATION MEETS SUNDAY**  
7:45 P.M.  
Phone ED 2-9778

### METHODIST CHURCH OF EAST LANSING and WESLEY FOUNDATION

Wilson M. Tennant, George I. Jordan, Ministers

**Sunday Worship**  
9:30 a.m. Red Cedar School One Block West of S. Harrison Rd. On Dover Dr.  
11:00 a.m. State Theatre Nursery for both services

**Church School**  
9:30 a.m. College Class Wesley House  
10:30 a.m. All Ages Red Cedar School

### EDGEWOOD PEOPLES CHURCH

Interdenominational  
459 N. Wagon Road  
(3 blocks north of Grand River)  
Rev. Truman A. Morrison, Minister  
Rev. Robinson G. Lapp, Minister

**Sunday Services At**  
9:30 A.M. & 11:00 A.M.

**SERMON**  
By Rev. Truman A. Morrison

Church School Sessions At 9:30 & 11:00 A.M.  
Crib room through Junior High  
Junior High Fellowship, 4 p.m.  
High School Fellowship-7 to 9 p.m.

### EASTMINSTER PRESBYTERIAN CHURCH

Rev. Robert L. Moreland, Minister  
345 Division Street, E.L.

**SUNDAY PROGRAM**  
E.L. Jr. High School, 815 Abbott Rd.

9:30 a.m. Church School and Adult Study in which students are welcome. Cribbery and Nursery are provided.

10:30 a.m. Worship and Continuing Church School for children third grade and under.

**SERMON**  
"The Meaning Of Community"

**STUDENTS WELCOME**  
Call ED 2-5619 for transportation

### LUTHER CHAPEL AND STUDENT CENTER

(Missouri Synod)  
411 Abbott Road  
Wm. J. Britton, Pastor

Chapel And Parsonage  
Telephone: ED 2-0778

**SUNDAY SCHEDULE**  
Divine Worship: 10 & 11:15 A.M.  
Bible Study: 9:00 A.M.  
Students' (Gamma Delta) Supper: 6:00 P.M.  
Vespers 8:15 p.m.

### ALL SAINTS EPISCOPAL CHURCH

(Missouri Synod)  
2300 Hazlett Road  
(1/2 Mile East of Wagon Road)  
East Lansing

Sunday School 9:15 A.M.

**SUNDAY WORSHIP 10:30 A.M.**

Rev. George W. B. Nibelsberg  
ED 2-2735 or ED 2-7001

### ASCENSION LUTHERAN CHURCH

(Missouri Synod)  
2300 Hazlett Road  
(1/2 Mile East of Wagon Road)  
East Lansing

Sunday School 9:15 A.M.

**SUNDAY WORSHIP 10:30 A.M.**

Rev. George W. B. Nibelsberg  
ED 2-2735 or ED 2-7001

### FIRST CHRISTIAN CHURCH

(Disciples of Christ)  
Holmes and Europa Streets  
1 blk south of Sparrow Hospital

Church School  
Crib Room  
(ages 12-14)

9:45 a.m. Morning Worship 10:45 a.m.  
9:00 p.m. C.V.F. 6:00 p.m.  
(Dr. Hi & College age)  
Call ED 2-2004

### FIRST WESLEYAN METHODIST CHURCH

North Magnolia Ave. at E. Michigan  
Rev. George B. Wilson - Minister

Sunday School - 9:45 A.M.  
Morning Worship - 11:00 A.M.  
Youth Service - 6:00 P.M.  
Evening Service - 7:00 P.M.

### ST. ANDREW'S EASTERN ORTHODOX CHURCH

2627 North East Street,  
E. Lansing  
9:00 A.M. Confessions  
9:30 A.M. Holy Communion  
Divine Liturgy in English and Slavonic

Students who need transportation call: Marianne Thach, 348 East London Hall.

### OLIVET BAPTIST CHURCH

225 E. Michigan  
Rev. William S. Gorman, Pastor

**SUNDAY**  
Sunday School 9:45 A.M.  
Morning Worship 11:00 A.M.  
Youth Groups 6:30 P.M.  
Evening Service 7 P.M.

**MEMBER SERVICE**  
Thursday 7:00 P.M.  
Transportation Service  
Sundays 9:00 A.M. Sunday of ED 2-2735 for a car.  
(Closed Regular Church to Campus)

### INTER-CITY BIBLE CHURCH

3027 E. MICHIGAN  
REV. G. J. TUINSTR, PASTOR

9:45 a.m. Sunday Bible School  
11:00 a.m. Morning Worship  
9:45 p.m. Three Youth Groups  
9:45 Teacher Training Class  
7:00 p.m. Evening Inspirational Service

"A Christ-Centered Bible Teaching Ministry"

### GIVE THANKS IN CHURCH THIS SUNDAY

LAANSING CENTRAL FREE METHODIST CHURCH  
Worshiping at 2000 East Lansing

Morning Worship 11 a.m.  
Sunday School 10 a.m.  
Youth Service 6:30 p.m.  
Evening Service 7:00 p.m.

Prayer Meeting Wed. Evening 7:30  
"The Church of the Light and Life Here"

### FIRST PRESBYTERIAN CHURCH

West Ottawa at North Chestnut  
DAVID S. FRASZEL, Minister  
F. WILKIE HARRIS, Minister

10:00 & 11:30 Worship Services  
10:00 & 11:30 Church School

Mr. Farrell preaching at both services

6:00 Sunday evening Calvin Club for single young adults.  
Mr. Farrell available for counseling Thursday evening 7 to 10 P.M.

### CENTRAL METHODIST CHURCH

Ottawa at Capitol  
Worship Services at 9:45 and 11:15

Paul Morrison, preaching  
Sunday School at 9:45

Central is a Friendly Church

### FIRST CHRISTIAN REFORMED CHURCH

300 Michigan St.  
Rev. John M. Hudson, Pastor

Morning Service 10 A.M.  
Evening Service 7 P.M.  
Counseling Available  
Dr. Cornelius Barbers  
300 Michigan St., E. L. ED 2-0102

### LAANSING CENTRAL FREE METHODIST CHURCH

Worshiping at 2000 East Lansing

Morning Worship 11 a.m.  
Sunday School 10 a.m.  
Youth Service 6:30 p.m.  
Evening Service 7:00 p.m.

Prayer Meeting Wed. Evening 7:30  
"The Church of the Light and Life Here"

### GIVE THANKS IN CHURCH THIS SUNDAY

LAANSING CENTRAL FREE METHODIST CHURCH  
Worshiping at 2000 East Lansing

Morning Worship 11 a.m.  
Sunday School 10 a.m.  
Youth Service 6:30 p.m.  
Evening Service 7:00 p.m.

Prayer Meeting Wed. Evening 7:30  
"The Church of the Light and Life Here"

### OKEMOS BAPTIST CHURCH

NEAR THE CAMPUS  
Rev. Howard Johnson, Pastor  
Invites You

Sunday School 10:00 a.m.  
Church 11:00 a.m.  
Young Peoples 6:30 p.m.  
Sunday Night Service 7:30 p.m.

Enjoy  
Friendship-good music's church family

Please call ED 2-0725 for a ride

### BETHANY BAPTIST CHURCH

2300 S. Pennsylvania Avenue  
Lansing

Sunday School 9:45 A.M.  
Training Union 9:15 P.M.  
Worship 10:35 A.M. & 7:30 P.M.

Paul B. Clark, Pastor  
Affiliated with the Southern Baptist Convention

For Transportation call ED 2-0725

### RUSHING

Don't forget  
ALPHA FALFA  
Circle Dr. E

### SOUTH BAPTIST CHURCH

South Washington  
One River Drive, Lansing  
DARD F. SUGDEN, D.D., Pastor

REMOND J. BELL, Asst. Pastor

9 A.M. Bible School  
for Young People and Young Marrieds

9 A.M. Morning Worship

7 P.M. Evening Service

9 P.M. Adult Youth Fellowship

### The OLE OWL SAYS:



**"KEWPEE'S" FEATURES:**  
"Kewpee-TV" time, all the time  
Coffee Call for Cooling Cookies  
Park in the rear...  
...with your dear  
and the Daily 49c Special

OPEN 6 A.M.



**Ralph's "KEWPEE'S" Cafeteria**  
AN IDEAL PLACE TO EAT - TV TOO

### PERMANENT OR REGULAR Anti Freeze

At Kramer's Popular Low Prices!

MUFFLERS - TAIL PIPES - EXHAUST PIPES  
POLISHES - WAXES - PAINTS - BRUSHES  
COMPLETE LINE OF ACCESSORIES

COMPLETE SPRING SERVICE For Cars, Trucks, Tractors	AUTO GLASS Expertly Installed While You Wait	New & Rebuilt -STARTERS -GENERATORS -FUEL PUMPS -WATER PUMPS -CLUTCH PLATES
---	--	--

## KRAMER AUTO PARTS

MEMBER A.M.A.  
800 E. KALAMAZOO ST. PHONE IV 4-1335

# FALL GRADUATES AND FACULTY ORDER CAPS AND GOWNS NOW FOR THE COMMENCEMENT EXERCISES ON DECEMBER 8.

## UNION BOOK STORE

## ATO Tops Sigma Phi Epsilon, 32-0

By GARY RONBERG.  
Just about everyone got into the scoring act Thursday night at Old College Field when ATO rolled over Sigma Phi Epsilon, 32-0.

Unable to move after the opening kickoff, Sig Eps punted to the ATO four. The Taus hit on their first play from scrimmage on a 56-yard pass play involving Marty Kleva, Fred Gowan and Tom Ryan.

Moments later, ATO's Mike Doyle returned an intercepted pass seven yards to the Sig Eps' eight. Kleva swept his left end

on the following play and the score read 14-0.

Before the end of the first half, Chuck Bruner pitched 41 yards to Don Savage for the game's third TD and the half-time count was 20-0.

The third period saw Tom Ryan snare his second scoring pass of the evening, an eight-yard strike from Kleva.

In the final quarter, Rog Herring fired 27 yards to Ron MacCannan to make the final score 32-0.

This was ATO's sixth win in as many tries.

### IM Results

FOOTBALL  
Phi Tau 8, Delta Phi 0  
Agor 19, AE Phi 8  
Bailey 2, 11; Bryan 2, 0  
DI 6, KAN 4  
Phi Kap Sig 21, AS Phi 0  
Sig Nu 22, Pi Kap Phi 0  
I.C.A. 35, RT Phi 0  
Bailey 3, 14; E Shaw 6, 0  
Bryan 3, 4; W Shaw 6, 0  
Butterfield 7, 13; Emmons 7, 4  
forfeits

Phi Delta over AK Phi  
Phi Chi over Sig Chi  
DTD over Theta Chi  
VOLLEYBALL  
E Shaw 10 over E Shaw 4, 14-16, 15-12, 16-14  
Rather 9 over Rather 6, 13-9, 15-9  
Butterfield 6 over Butterfield 4, 13-9, 15-9  
Bailey 4 over Bailey 2, 15-8, 14-16, 13-8  
Bailey 1 over Bailey 5, 15-7, 13-0  
Bailey 3 over Bailey 8, 15-2, 13-7  
forfeits

E Shaw 2 over E Shaw 3  
Emmons 1 over Emmons 3  
Rather 2 over Bryan 1  
Rather 3 over Rather 7, double forfeit

### IM Highlights

Bowling semi-finals will be held next Tuesday night at 7. Farnhouse will oppose Delta Tau Delta on alleys 5 and 6 at 7, and Sigma Nu will meet Delta Chi on alleys 7 and 8 at the same time.

Lambda Chi Alpha established a new team season high with a game total of 931 and a series of 2599.

Individual awards were won by Dick Galvin of LCA for his high game of 236, and Bill Porter of Delta Tau Delta for a 591 high series.

Deadline for signing up for fencing competition is Monday at 5 p.m.

Dormitory badminton matches originally slated for Thursday night have been rescheduled for Tuesday night at 8 because of a chemistry exam. Pairings for the matches will be announced in the Tuesday edition of the State News.

## Frosh Clash Today In Green-White T

### Future Varsity Grid Stars Reach Season's High Point

By MIKE SKINNER

Today is the day that the freshmen have been waiting for. At 3 p.m. in Spartan Stadium, Gordie Serr's grid will clash with Henry Bullough's unit in the annual Green and White football game.

The game promises plenty of rugged action, as the frosh gridgers will be out to prove themselves. It is the only game that they play during the season, and they should be out to make the most of it.

Besides the opportunity for the players, Spartan fans will be afforded an opportunity to

view future varsity gridgers in the making.

The freshmen team was broken down into the two squads on Wednesday. Head coach, Serr, will be guiding the White team, and line coach, Bullough, will be handling the Green unit.

According to Serr, the squads were divided as evenly as possible. He feels the contest may be a little ragged in its opening moments, but added that before it was over, it should be a good game.

Both coaches ran their forces through a light workout on Thursday, in final preparation for today's battle. Serr worked his team out in the private confines of the varsity's Secret Practice Field, while Bullough's outfit put on its finishing touches at Old College Field.

It was the final practice session of the season for the freshmen, thus closing out their seven week campaign.

Although regular practices

### Green-White Lineups

Green	White	
88 Sanders, Lonnie	LE	89 Clark, Ernie
71 Madd, Howard	LT	79 Youngs, La
65 Azar, George	LG	69 Schmeck,
58 Behrman, Dave	C	55 Kanickl, J
68 Behrman, Jim	RG	60 Hoffa, Jim
77 Bredde, Ed	RT	74 Max, Ken
88 Zorn, Bill	RE	84 Valdez, Ar
21 Abrecht, Jeff	QB	22 Jellis, Jerry
31 Watkins, Ron	LB	34 Marron, T
32 Eaton, Jim	RB	35 Wendorf, W
44 Paterra, Herb	FB	47 Stevenson,

GORDIE SERR, coach of the freshman White team, gives his football players advice in practicing for the game with the freshman Green team, which is today at 3 p.m. The squads will clash in Spartan Stadium.

## CLIP this COUPON!

You'll Get three Spartan Specials for only... \$2.50

- BRAKES ADJUSTED
- LUBRICATION
- TIRES ROTATED

Webber's SPARTAN Service  
2516 E. KALAMAZOO

## UNIVERSITY STUDENTS' SPECIAL

### YOUR CHOICE OF:

Prime beef open face sandwich on ju...  
extra large plate—whipped potato—coffee or milk

IN ADDITION, SAMPLE LIBERALLY FROM ANY OR ALL OF 9 SPECIAL APPETIZERS.

# 98c

DORM STUDENTS: Looking for a really fine meal this Sunday evening? For the finest cuisine at hard to beat prices be sure to visit...

### "HOUSE OF BEEF"

NOTICE: All meats served by the "House of Beef" are USDA Prime. Nothing but the best for you from...

## "HOUSE OF BEEF"

113 W. MICHIGAN AVE.  
(NEXT TO HOTEL OLDS)

Hours: Mon. - Sat. 7 a.m. - 9 p.m.  
Sun. 11 a.m. - 9 p.m.

Specializing in: roast beef, round beef, chicken, duck, steaks, etc.

"Food you always remember"

## NOW... 4th WEEK! MICHIGAN

...IT'S WHAT GOES ON WHEN THE LIGHTS GO OFF!



TONY RANDALL... THELMA RITTER  
Shown at 1:20, 3:20, 5:20, 7:25, 9:30 p.m.  
Starts THANKSGIVING DAY!

## Every place you go you'll be hearing about a Summer Place

FROM WARNER BROS. TECHNICOLOR  
EGAN - MCGUIRE - DEE - KENNEDY - DONAHUE

## TIME OUT FOR THAT WEEK-END SNACK!

Take a few minutes this weekend and relax with a snack from Odam's. It's the place to go for that friendly atmosphere and service that you want.

### YOUR CHOICE OF...

- ★ STEAKBURGER SPECIAL
- ★ YOUR FAVORITE ICE CREAM SUNDAE
- ★ ODAM'S FAMOUS BEEFBURGERS
- ★ PIZZA PIE
- ★ HOMEMADE PIE & CAKE

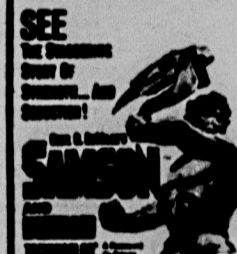
IMMEDIATE PICK-UP SERVICE

## ODAM'S GRILL

1040 E. GRAND RIVER

PLENTY OF FREE PARKING — HR. 7 a.m. - 1 a.m.

## GLADMER NOW SHOWING



WITH VICTOR MATURE  
MERYL LAMARR  
SHOWS TODAY AT —  
1:00 - 3:15 - 6:15 - 9:00  
TOMORROW IS SUPER BARGAIN DAY  
ALL DAY PREVIEW  
SEE 2 - FEATURES - 3

## SAMSON DEHAAR All Star Cast

SHOWN SATURDAY AT —  
2:37 - 6:15 - 9:30  
PLUS OUR NEW FEATURE

## Michigan State University FOREIGN FILM SERIES

presents

## "BORIS GODUNOV"

(Russian)

(Screen version of opera based on Alexander Pushkin's tragedy.)

Fairchild Theatre

Monday and Tuesday,

November 23 and 24

7 and 9 p.m.

Admission: 50c

## Decker's Gridiron Gamble

By TOM DECKER  
Mississippi and Syracuse for first place in our Southern California and State, Michigan State's are ranked ninth.

We predict that State's are pretty good as we Illinois over Northwestern Minnesota to dump We in one of the upsets of the Our Spartans will be am's Hurricanes in Orange Bowl Friday night.

Other games for the are:

Indiana over Purdue  
Michigan over Ohio State  
Iowa over Notre Dame  
Kentucky over Tennessee  
Southern Calif. over UCLA  
Pound State over Pittsburg  
Syracuse over Boston Uni.  
LSU over Tulane  
Washington over Washington  
Baylor over SMU  
Maryland over Virginia  
Oklahoma over Iowa State  
Oregon over Oregon State  
Arkansas over Texas Tech  
Clemson over Wake Forest  
Season: Right 65, wrong 2.  
Last week: Right 3, wrong 2

Pay More! What Turtle Neck T-Shirts Special Only \$1.95  
Len Kostich's VARSITY SHOP  
228 Abbott Rd.  
East Lansing, Mi.

## SENIORS: LAST DAY TO RETURN PICTURE PROOFS

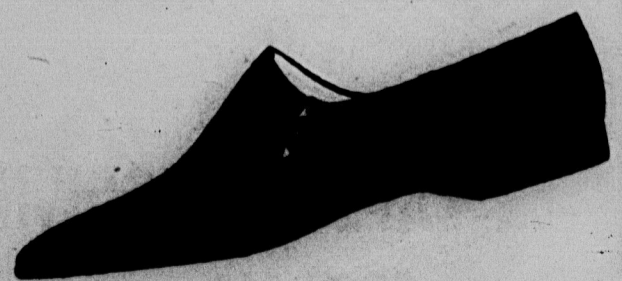
ALL PROOFS MUST BE RETURNED TO GET IN THE WOLVERINE

4th FLOOR UNION

PICTURES MAY BE PURCHASED C.O.D.

NO MONEY DOWN

## SALE! FAMOUS JOYCE BRUSHGLOVE TOGGLE BOOTEE



# 7.85

Casual shoe buy of the season! Your favorite gad-a-boot, a light-stopping and foot cushioning classic, now reduced to save you dollars. Its features: now adjustable velcro closure with sure-stick grip and finger-flick release, trim boot styling. Wild oats, black or irish setter brushglove.

...IT'S WHAT GOES ON WHEN THE LIGHTS GO OFF!  
TONY RANDALL... THELMA RITTER  
Shown at 1:20, 3:20, 5:20, 7:25, 9:30 p.m.  
Starts THANKSGIVING DAY!

Today  
te T  
nt  
ave been  
Serr's grid  
the annual  
Some plans  
ines next  
gridders  
feel was  
man  
er will be  
ed on two  
nains in  
offices, as  
lter one, w  
ms?  
White  
Clark, Eric  
Youngs, L  
Schmek, J  
Kaniell, J  
Hoffa, Jim  
Max, Ken  
Valder, An  
Jellis, Jerry  
Marron, T  
Wendro, S  
Stevenson,  
ker's  
idiron  
amble  
OM DECK  
and Str  
ace in cut  
followed  
ifornia ad  
gan State's  
h. Smith  
p to the B  
ood as we  
Northwest  
o dump W  
e upset of  
tans will  
loanes in  
Friday m  
ames for  
Purdie  
Ohio state  
ive team  
of Tennessee  
over UCLA  
over Pittsburg  
Boston Let  
lane  
Washington  
BMT  
of Virginia  
of Iowa State  
Oregon State  
Texas Tech  
State Farm  
at wrong  
light 3, wrong

# Florida Scene of Grid Finale

## Do Spartans Smell Roses in Miami Orange Bowl?

By JIM WALLINGTON  
Associate Sports Editor

Michigan State and Miami of Florida, two teams clinging to their bowl hopes, clash under the lights tonight at the Orange Bowl in Miami.

The game will be broadcast in audio only by radio stations WFLA, WFTS and WJIM.

Both bowl hopes rest on tonight's game. If the Spartans can do it, they will meet Saturday in the Big 10.

What situation could have led to the outcome of the game? The Hurricanes will be in the Orange Bowl and Gator



GRID CAPTAIN Don Wright (right), pictured here with Head Coach Duffy Daugherty, will be one of eight seniors making his final appearance in a Michigan State uniform when the Spartans meet Miami's Hurricanes in the Orange Bowl at 8:15 tonight.

## In Minneapolis, Champaign Spartans Eye Other Games

The Spartans will have their eyes on Minneapolis and Champaign Saturday for games that will seal the outcome of the Big 10 football race. Here are some late developments.

CHAMPAIGN, Ill. (AP)—Illinois football squad spent 90 minutes Thursday passing, punting and placekicking.

EVANSTON, Ill. (AP)—Guard Joe Abbatiello and end Irv

MINNEAPOLIS (AP)—Larry Johnson, whose passes nearly carried Minnesota to an upset victory over Purdue, was restored to first string quarterback Thursday.

MADISON, Wis. (AP)—The Badgers paid attention Thursday

reinforced defenses designed to spoil a Gopher passing attack. Cross retained Northwestern's football squad Thursday.

MIAMI, Fla. (AP)—Michigan State's football team came to Miami two days early to get acclimated to the Florida heat before its game with the Miami Hurricanes tonight in the Orange Bowl. But so far, the Spartans have seen nothing but chilly rain.

Miami's practice was washed out, too, but the lack of work could be most costly to the Spartans, because it is always more difficult for Daugherty to get the team up for a non-conference game than for a Big 10 opponent.

## 47 Schools Enter Nationals

Forty-seven schools are entered in the NCAA cross country meet which will be held at the Forest Akers Golf Course at 11:30 a. m. Monday.

MSU will defend its championship in team and individual classes. Friday Kennedy won the race for the Spartans last year.

Though 47 individual entries have been submitted, close to 150 are expected to run MSU.

## Rain Hits Miami

MIAMI, Fla. (AP)—Michigan State's football team came to Miami two days early to get acclimated to the Florida heat before its game with the Miami Hurricanes tonight in the Orange Bowl. But so far, the Spartans have seen nothing but chilly rain.

Miami's practice was washed out, too, but the lack of work could be most costly to the Spartans, because it is always more difficult for Daugherty to get the team up for a non-conference game than for a Big 10 opponent.

**State News Sports**  
Night Sports Editor  
Suzette Ramsey  
Assistant—Clary Renberg  
November 20, 1959 Page Five

CAMPBELLS SUBURBAN SHOP CAMPBELLS SUBURBAN SHOP

OURS ALONE  
ALAN PAINE SWEATERS  
CARDIGANS - CREWS  
BOTH  
MEN'S & WOMEN'S

Has Window, Does Travel  
The Store with the Red Door

JOHN SMITH'S STERILIZED JOHN SMITH'S STERILIZED

White  
Clark, Eric  
Youngs, L  
Schmek, J  
Kaniell, J  
Hoffa, Jim  
Max, Ken  
Valder, An  
Jellis, Jerry  
Marron, T  
Wendro, S  
Stevenson,  
ker's  
idiron  
amble  
OM DECK  
and Str  
ace in cut  
followed  
ifornia ad  
gan State's  
h. Smith  
p to the B  
ood as we  
Northwest  
o dump W  
e upset of  
tans will  
loanes in  
Friday m  
ames for  
Purdie  
Ohio state  
ive team  
of Tennessee  
over UCLA  
over Pittsburg  
Boston Let  
lane  
Washington  
BMT  
of Virginia  
of Iowa State  
Oregon State  
Texas Tech  
State Farm  
at wrong  
light 3, wrong

Headquarters for Jockey Brand Shorts  
**KNAPP'S UNIVERSITY SHOP**  
KNAPP'S STREET FLOOR

Who said it first?

APPLY OF THE EYE  
For this overworked phrase, turn to the world's best source of quotations—this book. Specifically, "The Old Testament," Chapter XXXII, 10.  
The tear line as the apple  
Who knew

**Jockey T-Shirts**  
The most respected, creative name in underwear is Jockey brand. It stands for reason, then, that Jockey brand T-shirts are unmatched for quality as well as styling. You can choose from standard crew neck T-shirt, t-shirt, t-shirt, t-shirt, t-shirt, and V-neck T-shirt models. Every man needs a drawer full of T-shirts—and the label to look for is Jockey brand. Let it guide you to the world's finest underwear.

fashioned by the house of **Cooper**

**EUROPE**  
We'll see the usual plus Russia, Scandinavia, Yugoslavia, A. N. Africa. A different trip—for those who don't want to be herded around. Also shorter trips. Budget priced.

**EUROPE SUMMER TOURS**  
255 Sequoia, Box C  
Pasadena, California

SHOWTIME DIAL ED 2-5817  
**STATE**  
ED 2-5814  
THURS. - NOV. 26th

**HEY, MOM!**  
15 CARTOONS AND COMEDY THANKSGIVING MORNING CARTOON and COMEDY FESTIVAL  
AT 10 A.M. KIDDIE'S 30c ADULTS 65c

**LUCON** LATE SHOW TONITE at 10 P.M.  
Feature: 1:25 - 3:35 5:55 - 8:15 - 10:30

The story that began in Lansing!  
FOUR OF TODAY'S MOST EXCITING STARS... IN THE MOST SCORCHING DRAMA OF YOUNG PEOPLE TO IGNITE THE SCREEN IN YEARS!

HAL WALLIS PRODUCTION  
**"career"**

DEAN MARTIN ANTHONY FRANCIOSA  
SHIRLEY M. LAINE CAROLYN JONES

SPECIAL KIDDIE SHOW SATURDAY MATINEE AT 1:00  
6 Cartoons plus Audie Murphy in "WORLD IN MY CORNER"

**PROUD COMPETITOR**

Eager to go at first command... The Austin-Healey 100 Six offers brilliant performance plus precision-built stamina... that puts the fun back into driving!

A product of the British Motor Corporation, Ltd., manufacturers of Austin, Austin-Healey, Sprite, Morris, MG, Magneton, and Riley Cars. From 1927 on out of Great Britain.

**AUSTIN-HEALEY**  
Brooks Imported Cars  
5016 W. GRAND RIVER

FOR SHOW TIME DIAL ED 2-5817  
**STATE**  
EAST LANSING - PHONE ED 2-2814

ADULTS 70c CHILDREN 20c  
NOW SHOWING - TONIGHT AND SAT.  
A True Epic Of The Emotions! Monumental In Its Impact And Suspense!

MILLIE PERKINS  
**THE DIARY OF ANNE FRANK**  
JOSEPH SCHALDKRAUT-SHELLEY WINTERS  
RICHARD BEYNER-GUSTI HUBER-ED WYMAN  
STARTING SUNDAY AT 1 P.M.  
BIG STORY - EXCITING STORY - THRILLS

**THE FBI STORY**  
JAMES STEWART-VERA MILES  
WARNER BROS. TECHNICOLOR

SPECIAL KIDDIES SHOW SAT. - 1 P.M.  
"ABBOTT AND COSTELLO MEET CAPT. KIDD"  
AND  
7 - CARTOONS AND COMEDY  
KIDDIES 20c ADULTS 50c

**KOOL CROSSWORD No. 8**

ACROSS  
1. Right laugh  
2. Watch over  
3. A very young  
4. A very young  
5. A very young  
6. A very young  
7. A very young  
8. A very young  
9. A very young  
10. A very young  
11. A very young  
12. A very young  
13. A very young  
14. A very young  
15. A very young  
16. A very young  
17. A very young  
18. A very young  
19. A very young  
20. A very young  
21. A very young  
22. A very young  
23. A very young  
24. A very young  
25. A very young  
26. A very young  
27. A very young  
28. A very young  
29. A very young  
30. A very young  
31. A very young  
32. A very young  
33. A very young  
34. A very young  
35. A very young  
36. A very young  
37. A very young  
38. A very young  
39. A very young  
40. A very young  
41. A very young  
42. A very young  
43. A very young  
44. A very young  
45. A very young  
46. A very young  
47. A very young  
48. A very young  
49. A very young

DOWN  
1. A very young  
2. A very young  
3. A very young  
4. A very young  
5. A very young  
6. A very young  
7. A very young  
8. A very young  
9. A very young  
10. A very young  
11. A very young  
12. A very young  
13. A very young  
14. A very young  
15. A very young  
16. A very young  
17. A very young  
18. A very young  
19. A very young  
20. A very young  
21. A very young  
22. A very young  
23. A very young  
24. A very young  
25. A very young  
26. A very young  
27. A very young  
28. A very young  
29. A very young  
30. A very young  
31. A very young  
32. A very young  
33. A very young  
34. A very young  
35. A very young  
36. A very young  
37. A very young  
38. A very young  
39. A very young  
40. A very young  
41. A very young  
42. A very young  
43. A very young  
44. A very young  
45. A very young  
46. A very young  
47. A very young  
48. A very young  
49. A very young

When your throat tells you it's time for a change, you need a real change...  
**YOU NEED THE Menthol Magic OF KOOL**  
Cigarettes

FORECAST: many good years of Fashion...  
Arrow Gordon Dover

Arrow's Gordon Dover sees you handsomely through the halls of learning. Notice its conservative style that means lasting fashion. See our extensive selection of Arrow shirts—button-downs, tabs, pins tabs—all in long-wearing "Sanforized" fabrics. Classic stripes, solids, and white. \$5.00.

**KNAPP'S UNIVERSITY SHOP**  
STREET FLOOR

The shirt with a future...  
You needn't be a man of science to recognize the superior styling of Arrow's Gordon Dover. Its fashion credentials number—the button-down collar with the perfect arched flare, the best "Sanforized" oxford cloth, Arrow's outstanding tailoring and enduring fit. Try one—you'll vouch for it! \$5.00.

**ARROW**  
Each Saturday see the NCAA football "Game of the Week"—ABC TV—sponsored by ARROW.



State News Photo by Eric Lundberg  
**RUSHEES AND SORORITY MEMBERS** are busy preparing for fall teas. Gwen Stephenson, St. Johns junior; Geri Billett, Wyandotte junior; playing the role of rushees, and Judy Todd, St. Clair Shores junior (seated left to right) are rehearsing a familiar scene to be enacted Saturday and Sunday afternoons.

## Rush Teas Highlight Weekend Festivities

By LINDA BAUMER

The social forecast for the weekend: teas, parties and dances. And enough of each to fulfill the desire of even the most sociable Spartan.

Approximately 1,200 rushees will be entertained by sorority women this weekend at annual fall teas. Rushees have been divided into 19 groups and will visit each house between 12:30 and 3:30 on Saturday and 1:30 and 6:30 on Sunday.

Greeks will celebrate the beginning of rush at the all-university IFC-PanHellenic Ball this evening. Decorations will complement the theme of "Mardi Gras" at the semi-formal affair.

Bob Eberhard will provide music for dancing from 9-12 p.m. at the Civic Center. Members of Theta Chi and their dates will dine and dance to the music of the Bachelors at the chapter house this evening. Following the dinner, they will attend the IFC-PanHellenic Ball.

The Theta Chi's will hold a hot dog roast and hay ride at a local dude ranch Saturday evening.

Phi Delta Theta will stage a "Hidden Desires" costume party tonight, with dancing to the music of Smith Jackman.

The pledges of Delta Sigma Phi are giving a French-themed left bank party for the active chapter Saturday evening. Prizes will be given for the most unusual costumes.

Residents of Gilchrist Hall will dance at a "Roman Holiday" at their term party from 9-12 p.m. Saturday.

Roman columns will grace archways as guests are greeted by toga-clad hostesses. Refresh-

ments will include unfermented grape juice.

Delta Chi will hold a "Wild West" party Saturday evening. Entertainment is to include gambling for favors, and dancing to the music of Bob Brown. Rather Hall is holding their term party Saturday evening at the American Legion Hall. Rose corsages will be given to the men's dates in keeping with the theme of "Moonlight and Roses."

The members of Alpha Epsilon Pi and their dates will visit Hawaii at their Saturday evening party. Decorations will include sand, especially imported for the event, and a smoking volcano. Palm trees and voodoo dolls will also help to set the mood.

Cheers attending the party will receive leis and fraternity pledge paddles. Refreshments are to be served from coconut shells.

"Autumnal" will theme the annual fall term party of Shaw Hall Saturday evening, with music provided by Buddy Spangler. Decorations will be patterned around four calendars of the fall months, with corresponding leaves and colors around each.

Elsworth Co-op has planned a "County Fair" for Saturday evening. Members will provide entertainment at side show booths and games of chance.

Union Board will hold an all-university dance Saturday from 9-12 p.m. in the Union ball room. In keeping with the frosty weather, "Autumn Leaves" will theme the event.

## Pinnings

**ALPHA GAMMA DELTA**  
 Arlene Cranmer, Zeeland junior, to George Stover, Berrien Spring senior and Alpha Gamma Rho; Sharon Hartell, Saginaw junior, to Dick Delor, Matlow senior and Alpha Gamma Rho; Ruthie Schlotter, Lansing sophomore, to Jerry Smith, U of M sophomore and Delta Tau Delta.

Detroit senior and Phi Delta Theta; Carol Winther, Menominee sophomore, to Bill Reinke, University of Wisconsin senior and Alpha Tau Omega.

**KAPPA DELTA**  
 Annette Krause, Grosse Pointe junior, to William DiGiulio, Medina, N.Y., senior and Phi Kappa Sigma.

**PHI KAPPA TAU**  
 Susan Baird, Dearborn freshman, to Ken Bray, Dearborn junior.

**PHI MU**  
 Charlene Peers, Buchanan senior, to Ronald Simpson, White Cloud senior and Phi Kappa Phi.

**PI KAPPA PHI**  
 Ann Cheney, U of M junior, to Clark Swayze, Midland junior; Linda Alm, National College of Education sophomore, to Walter Harry, South Haven junior; Sharon Palmer, MSU graduate, to Robert Tufts, Grand Rapids senior.

**THETA CHI**  
 Carole Ducharme, Northeastern University, to Jack Moore, Boston, Mass., junior.

**ZETA TAU ALPHA**  
 Lynn Rapp, Portland, Ind., junior, to Richard Hardin, Lansing junior and Sigma Phi Epsilon; Jeanne Somers, Arlington, Va., senior, to Jim Morse, Bellevue junior and Farmhouse.

**ALPHA SIGMA PHI**  
 Petra Johnson, Union City senior, to Ted Freers, Dearborn senior; Betty Meyer, MSU-O freshman, to Glenn Hartman, Pontiac senior; Suzanne DePasquale, West Palm Beach, Fla., to Jim Samuelson, Edina, Minn., junior.

**ASHER HOUSE FOR WOMEN**  
 Toni Graves, Pontiac sophomore, to Terry Hamilton, Cheslerland, Ohio, junior and Asher House for Men; Phyllis Zimmerle, Howell freshman, to Dean Johnson, Dearborn junior and Asher House for Men.

**DELTA ZETA**  
 Doris Jones, Cleveland senior, to George Evankovich, Dearborn senior and Lambda Chi Alpha.

**GAMMA PHI BETA**  
 Chris Simpson, Santa Barbara, Calif., junior, to John Caruthers, Durand junior and Sigma Chi; Joan Kane, San Angelo, Tex., junior, to Jerry Ricketts,

## Visiting Folk Singer Gives Performance

Gay Carawan, who has traveled throughout the country with his guitar, flute and banjo, will give a concert of folk songs in East Lansing this evening. The public performance, scheduled to begin at 8 p.m., will be held at People's Church.

Carawan first became aware of folk songs when he was 21. His imagination was stirred with the desire to keep alive America's heritage of song.

Carawan and two friends headed south on a pilgrimage working their way from farmstead to farmstead in North Carolina and Tennessee, while picking up songs of all kinds along the way. "That trip," Carawan said, "was one of the most important influences on my singing and playing."

Carawan's visit to East Lansing is being co-sponsored by the Christian Student and Wesley Foundation at Michigan State.

MICHIGAN STATE UNIVERSITY  
 November 26, 1959

## Ballot Box

Gamma Alpha Chi women's advertising board recently pledged the following: Lynda Gilchrist, freshman; Rose Leight, Fostoria freshman; Betsy art, Madison, Neb., junior; Holmes, Verona, N.J.; Diane Szobony, Elkhart, senior; Gail Prack, C junior.

Also Vicki Rusty, La ville senior; Liz Gaffie, junior; Gail Glendon, sophomore; Gail Schmitt, senior; Sharon Lutz, Durand junior; Linda Farmington junior; Linda Detroit sophomore; Julie Suelien Hoyt, Junior; Zeemke, Armada junior; reed Curry, Brookton, N.Y. lon; Donna Wenzel, Ontario, senior; Marie Gary Ind., sophomore.

Recently elected officers: Engineering Council are president, Bill Suttler, senior; public relations, Taylor, Dewitt senior.

## Full Social Calendar

### Religious Groups Plan Varied Social Activities

Members of campus religious organizations will be enjoying a variety of activities this weekend. Swimming parties, dances and a spaghetti dinner highlight their social calendar.

"Blue Coral," a record dance, will be presented by the Catholic Student Organization from 9-12 Saturday night at the center.

Fellowship of Religious Liberals is planning an evening of dancing, games and refreshments from 7:30-11 Sunday at the Forestry cabin.

Members of Gamma Delta will meet at the Men's IM building Saturday at 7:30 for an evening of swimming.

Married students will meet at Hillel House for a brief meeting Saturday evening at 8 before going bowling. Hillel foundation will hold a spaghetti dinner Sunday at 6 p.m. at Hillel House. Following the dinner, Mrs. Myrtle Reul, assistant professor of social work, will discuss "Marriage and Love in Current Literature" with the group.

Canterbury Club has planned a "game night" at All Saints Church for 8 this evening. The regular Sunday evening program will begin at 6:30. Following evening prayer and a cost supper, Rev. G. M. Jones will speak on "Can We Affirm Christian Unity?"

Members of Delta Sigma Phi are giving a French-themed left bank party for the active chapter Saturday evening. Prizes will be given for the most unusual costumes.

Residents of Gilchrist Hall will dance at a "Roman Holiday" at their term party from 9-12 p.m. Saturday.

Roman columns will grace archways as guests are greeted by toga-clad hostesses. Refresh-

**SAECA SAYS...  
 BE AT THE FIRST ANNUAL  
 BOWL GAME  
 BEHIND THE IL FORNO ROOM  
 TIME: SUNDAY 2 p.m.**

**LOOKING FOR A GOOD  
 USED CAR?  
 CARS SELECTED FOR YOU**

1959 KARMANN  
 GHIA COUPE  
 like new sports car. can be yours for only

\$2295.00

1958 MGA COUPE  
 One owner, low mileage. Beautiful black finish, and red leather trim. Price reduced to

\$1995

**FOSTER & PAUL, INC.**  
 USED CARS  
 WEST TOWARD LANSING ON US-16



Smoke Signal Says...

FOR HEAP CLEAN BLANKETS WASH AT

**UNIVERSITY LAUNDERETTE**

Next To E. Lansing Bus Station

Your complete Optical Headquarters... conveniently located, offering complete optical services

**WALLACE OPTICIANS**

Branch Office - Vine at Clippert (opposite Sears in Frander) eye examinations by Dr. W. C. Jensen, registered optometrist

PH. IV 9-2774  
 HOURS: Mon. 1-9; Tues. Wed., Sat. 9-5; Thurs. & Fri. 9-5

**PIZZA PIT RESTAURANT**

**FRIDAY SPECIAL**  
 Fish sticks and Cole Slaw, Scalloped Potatoes, Bread & butter, tea or coffee 75c

**PIZZA DELIVERY ED 2-0063**  
 10 Varieties - 3 Sizes  
 "The Pizza with the Thin Crisp Crust"  
 203 MAC AVE - DOWNSTAIRS

**QAM**  
 Home of the Unique  
**QAM Burgers**  
 Across from State Theater  
 FREE DELIVERY  
 ED 7-9174

**KWIK STOP SUPERETTE**  
 OPEN 7 AM - 2 AM

**KLOCK RESTAURANT**  
 OPEN 6 AM - 3 AM

**NOW DELIVERING**

YOUR FAVORITE BEVERAGES & GROCERIES PARTY SPECIALITIES IV 4-7971

CORNER OF KALAMAZOO & CLIPPERT

PIZZA COMPLETE DINNERS LATE SNACKS IV 7-5097-00

**'250 INCLUDES:**

ROUND TRIP TRANSPORTATION  
 HOTEL ACCOMODATIONS  
 MEALS  
 TRANSFERS  
 TIPS  
 COLLEGE WEEK ACTIVITIES  
 TAXES

**BERMUDA SPRING TOUR**  
 MARCH 23-28, 1960  
 REGISTER NOW

COLLEGE TRAVEL OFFICE 130 W. GRAND AVENUE ED 2-0063

**GIVE HIM THE LIGHTER THAT NEVER FAILS**

Colibril by **Kreiser**

**FASHION STRIPES**  
 Superior quality pattern in 12 colors, lasting colors \$6.95

**RAINBOW SWIRL**  
 Richly engine-turned. Bright finish in gold or silver. \$8.50

**Ranney Jewelers**  
 NEXT TO STATE THEATRE  
 Certified Gemologist  
 REPAIRING JEWELRY  
 AMERICAN GEM SOCIETY