

K. Attacks Colonialism

Demands End to All Colonies

Hits Hammar-skjold: Demands 12 Apology

UNITED NATIONS, N.Y. — Premier Khrushchev, in a direct appeal to Africa, declared today that unless the U.N. approves a Soviet proposal of immediate independence for all colonial areas, their peoples will have no alternative but "to take up arms."



Grad students majoring in chemistry are shown receiving rescue training from the staff of the department of public safety. The instruction in Keds was designed to prepare experimenters for future accidents. State News Photo by Don Sayles.

Kennedy To Appear On Campus

By SHARON COADY

State News City Editor Senator John F. Kennedy, Democratic presidential candidate, will speak for around 15 minutes Friday on the south steps of the Union.

Kennedy will arrive on campus in a motorcade with a police escort after a speech on the east steps of the capital.

Provost Paul Miller will officially welcome the senator on behalf of the university. Democratic gubernatorial candidate John Swainson will introduce him.

DAN RIEDEL, AUSG president, will present Kennedy with a copy of Dr. Madison Kahn's history of MSU.

Several members of the Board of Trustees and the state administration board will be at the speech.

Gov. Williams, Swainson, Neil Staebler, state chairman, Thomas Quimby, national committeeman, and James O'Rourke, candidate for U.S. representative from the sixth district, will travel with Kennedy.

Kennedy girls will welcome the senator when he arrives on campus. They will form an honor guard wearing the wide brimmed hats with Kennedy's picture on the crown, made famous in July at the national convention.

CAMPUS COEDS and East Lansing high school girls will sign up for the jobs at the Young Citizens for Kennedy meeting to night.

The club will spend all today working on preparations for Kennedy's arrival, said John Tripp, campus contact man for the Kennedy organization.

Kennedy will leave Lansing at 6:05 p.m. for stops at Owosso and Saginaw. He will arrive in Michigan at 11:45 tonight and will stay at the Michigan Union, U of M campus.

His agenda calls for stops at Jackson, Albion, Marshall, Battle Creek, Kalamazoo and Grand Rapids besides.

Sharon Coady and Al Royce will represent State News as reporter and photographer respectively on Kennedy's campaign train. They will travel with him throughout the state during the day.

IDENTICAL TV studio sets have been erected in each city, with a combination podium and desk which will allow each candidate to sit or stand as he chooses.

Both candidates have been asked to wear the same shade of attire and studio lighting has been duplicated at each end of the network.

ABC called it the most difficult and complicated telecast in broadcast history, and assigned more than 200 technicians to the program.

Both previous debates have found the two candidates in the same studio. The first was handled by CBS from Chicago, the second by NBC from Washington.

THE LAST of four originally scheduled debates is set for Oct. 21.

The three networks have offered TV time for a fifth debate the week before the November election. But Kennedy and Nixon have as yet not agreed on this proposal.

Meanwhile, WPIX-TV, New York, and WGN-TV, Chicago, Wednesday offered free time for a face-to-face debate between the two vice-presidential candidates, Democrat Lyndon Johnson and Republican Henry Cabot Lodge.

The stations suggested the two meet in New York Oct. 19, or Chicago about Oct. 22, with the one-hour program available to other TV stations desiring it.

Dick Nixon, Kennedy To Debate

NEW YORK, (AP) — The third of the presidential campaign debates tonight will be a split-screen, trans-continental show on television.

Staged by the American Broadcasting Co., it will find Republican candidate Richard M. Nixon in Los Angeles and Democratic candidate John F. Kennedy in New York.

The hour-long program goes on the TV network at 6:30 p.m. EST.

IDENTICAL TV studio sets have been erected in each city, with a combination podium and desk which will allow each candidate to sit or stand as he chooses.

Both candidates have been asked to wear the same shade of attire and studio lighting has been duplicated at each end of the network.

ABC called it the most difficult and complicated telecast in broadcast history, and assigned more than 200 technicians to the program.

Both previous debates have found the two candidates in the same studio. The first was handled by CBS from Chicago, the second by NBC from Washington.

THE LAST of four originally scheduled debates is set for Oct. 21.

The three networks have offered TV time for a fifth debate the week before the November election. But Kennedy and Nixon have as yet not agreed on this proposal.

Meanwhile, WPIX-TV, New York, and WGN-TV, Chicago, Wednesday offered free time for a face-to-face debate between the two vice-presidential candidates, Democrat Lyndon Johnson and Republican Henry Cabot Lodge.

The stations suggested the two meet in New York Oct. 19, or Chicago about Oct. 22, with the one-hour program available to other TV stations desiring it.

Senior Of The Week Friday is the last day to turn in petitions for Senior of the Week. Petitions may be turned in at the Union concourse by 5:30.

United Community Chest Opens Today

MSU's 1961 United Community Chest campaign opens today with a goal of \$79,058, a nine percent increase over last year.

Under the chairmanship of Dr. Clarence L. Schloemer, professor of natural science, twenty-three division leaders and many department representatives will work to reach their goals by November 1.

In commenting on the campaign, Dr. Schloemer said, "The faculty and staff of MSU have a well-deserved reputation with respect to its acceptance of community responsibilities."

"This fact has no better evidence to support it than the voluntary financial assistance given to the 53 Red Feather agencies and services sponsored by the United Community Chest Fund in the Greater Lansing Area."

"The challenge offered by this year's quota is great, but we have confidence that it will be accepted in stride by the members of the University, thus demonstrating once again the closer relationship university people have to the larger community of which they are an integral part."

COMMUNITY CHEST officials report that last year 2,725 MSU students, faculty, and staff used the services.

MSU division heads for the campaign are: Robert Quimby, University College; Jay Olin, Buildings and Utilities; Freeman Snyder and Wade McCall, Agriculture; Stuart B. Mead, Business and Public Service; Jack M. Bain, Communication Arts; Leonard Laker, Education; Gale Mikles, Physical Education; Leo Nothstein, Engineering; Mary Morr, Home Economics; Lewis Zerby and John Speck, Science and Arts; T. W. Jenkins, Veterinary Medicine; Thomas Dutek, Dean of Students; Norman Pflizer, Dormitories and Food Services; Elmer Antonen, Continuing Education Service; Robert Herron, Office of the Secretary; Richard Bernitt, Special Division; Paul Rumpus, University Business Office; Edward Zabrusky, University Relations; Charles Schuller, University Services; William Finn, Admissions, Scholarships and Registrar.

Alan Anderson, Stuart B. Mead, and A. Westley Rowland are serving as associate chairmen.

The advance pacemaker drive on the campus already has the campaign off to a flying start. Under the direction of Vice President for Special Services Dr. Gordon Sabine, this advance campaign has raised \$16,674, or 19.1 percent of its quota.

The students' contribution each spring to the Campus Chest are used to assist the University in meeting its quota. Last year the students contributed more than \$300.

Senior Of The Week Friday is the last day to turn in petitions for Senior of the Week. Petitions may be turned in at the Union concourse by 5:30.

Senior Of The Week Friday is the last day to turn in petitions for Senior of the Week. Petitions may be turned in at the Union concourse by 5:30.

In Japan

Assassination of Leader Raises Terrorism Fears

TOKYO, (AP) — The assassination of Socialist party chairman Inejiro Asanuma raised fears in this shocked nation Wednesday that ultranationalist terrorism may again become a force in Japanese political life. The body, anti-American politician was

stabbed to death by a fanatical right-wing student. The assassin, 17-year-old Ootaya Yamaguchi, attacked Asanuma yesterday as he addressed a political meeting, stabbing him in the chest twice with a foot-long samurai sword.

ASANUMA, an outspoken friend of Red China and militant foe of the U.S.-Japan military alliance, died en route to a hospital.

The youth, overpowered on the spot, later told police he considered the Socialist leader a traitor trying to sell out Japan to the Communists.

The government ordered an immediate crackdown on suspected terrorist organizations after 10,000 union members and leftist university students marched on police headquarters and the official residence of Prime Minister Hayato Ikeda.

ABOUT 500 of the marchers, hurling rocks at police, tried to break through the lines of guards. They were scattered without any serious violence.

The remainder of the crowd stood quietly and broke up after government officials promised to move swiftly to stamp out terrorism.

Police staged a series of raids last night, including one on the headquarters of the Nippon-style Japan patriotic society, Yamaguchi had been a member of the organization until last May.

ASANUMA's murder, the first involving a major Japanese political figure in 24 years, recalled the bloody era of "government by assassination" that raised militarists to power before World War II.

It was the third political stabbing by a right-wing fanatic in four months. The other victims, socialist party official Jotaro Kawakami and the then prime minister, Nobusuke Kishi, both survived. They were attacked during the outbreak of leftist riots last June and July against the new U.S.-Japanese security pact.

The death of Asanuma, 61, left the Socialist party temporarily leaderless at the beginning of a national election campaign that reaches a climax next month. But it gave the party's left wing a martyr and could help the Socialists reduce the conservatives' strong parliamentary majority.

"The United Nations makes fun of our national army," said information commissioner Albert Bolela. "If they intend to impose their trusteeship on us, let them say so."

Fire Department Answers 3 Calls Three separate fire runs kept the department of public safety literally hopping Tuesday evening.

The commotion started when a grease fire broke out at apartment 115 of Van Hoesen hall at 6 p.m. The small blaze was extinguished quickly by the occupants who smothered it with flour.

At 6:33 a student deliberately set fire to a pile of leaves at Mayo hall. No damage was reported. The student has been referred to the dean of students office.

Another apartment fire was reported at 8 p.m. Fire department officials reported a television had burned in a Spartan Village apartment occupied by Italo and Mary Scangas. No damage estimate was made.

Asylum Given To Seaman

NEW YORK, (AP) — The seaman who fled Soviet Premier Nikita S. Khrushchev's ship, the Baltika, two days ago won political asylum in the United States Wednesday—and with it the freedom he sought.

The seaman, Victor Jaanimets, was allowed to leave the immigration service offices where he had been held pending determination of his status and background.

The decision was announced by P. A. Esperdy, district director of the service.

ESPERDY SAID he made the decision after consulting with his superiors in Washington.

He said that "after checking sources of information, we have decided that Jaanimets is a bona fide political refugee."

The international rescue committee has been selected as sponsor for Jaanimets to "look after his welfare and get him settled," Esperdy said.

ASKED whether a guard would be provided to protect the seaman from possible reprisal by Soviet agents, Esperdy said: "Definitely not."

The rescue committee had announced earlier that it would try to provide a home and a job for Jaanimets if asylum were granted.

KHRUSHCHEV himself shrugged off the seaman's defection.

"He either lost his way or he wanted to stay," Khrushchev told news conference outside his Park Avenue residence.

"If he uses, it's all right with me. If he had approached me—I was on the same ship—I would have furnished him with some money for the first period until he finds a job."

Congo Heads Threaten UN Relations

LEOPOLDVILLE, THE CONGO, (AP) — The Congo's young leaders threatened to break relations with the United Nations Wednesday because the U.N. still refuses to turn over disputed areas to Patrice Lumumba.

Few observers dared guess what would happen next in the stalemate. Hostility toward whites increased and relations between the provisional Congo government and the United Nations grew worse by the hour.

The college of technical commissioners, appointed by army chief Col. Joseph Mobutu to run the government, threatened to halt U.N. broadcasts over Leopoldville radio.

"The United Nations makes fun of our national army," said information commissioner Albert Bolela. "If they intend to impose their trusteeship on us, let them say so."

IN THE AFTERNOON, problems solving roundtables will be held. Written and oral questions which arise during to session will be answered by a panel in each roundtable.

The panels will consist of one high school adviser, one MSU faculty member, one selected high school student, and an outside specialist.

Mr. James Brown, of the Ingham County News, Mason, Michigan, will head the section on printed newspapers.

Mr. Bert Halseth, of the H. C. Berger Co., Lansing, will head the section on duplicated newspapers, and Mr. Robert Hoerner, of the Lansing State Journal, will head the section on sports writing.

Circle to Meet Circle honorary will meet at 6:30 tonight in the recreation room of North Campbell.

Fire Department Answers 3 Calls Three separate fire runs kept the department of public safety literally hopping Tuesday evening.

The commotion started when a grease fire broke out at apartment 115 of Van Hoesen hall at 6 p.m. The small blaze was extinguished quickly by the occupants who smothered it with flour.

At 6:33 a student deliberately set fire to a pile of leaves at Mayo hall. No damage was reported. The student has been referred to the dean of students office.

Another apartment fire was reported at 8 p.m. Fire department officials reported a television had burned in a Spartan Village apartment occupied by Italo and Mary Scangas. No damage estimate was made.

La Palombara To Discuss Yanks Abroad

"Americans Abroad: Pretty Ugly" will be the topic for Dr. Joseph G. La Palombara, head of the MSU department of political science, this afternoon at the first fall meeting of the International Relations club, open to all interested students.

Speaking at 6 p.m. in 24 Union La Palombara will use the novel "The Ugly American" as a basis for a general evaluation of American diplomatic representation overseas and the changes which have occurred since the book was published.

LA PALOMBARA, author of the recently revised "The Ugly American," was a visiting professor in Rome and a trustee in 1957-58, and has traveled widely in Europe in research on comparative political systems.

The International Relations club's plans for the coming year will be discussed at the meeting. One IRC innovation this term will be the first of a projected series of "International Days," day-long conferences on specific areas or subjects.

School of Nursing Enrollment Rises Freshman enrollment in the school of nursing increased from last year's figure of 81 to 120, according to Miss Florence Kempf, director of the school of nursing.

Miss Kempf attributed the increase to a new awareness in high school graduates of the values of receiving nurses training in a collegiate institute rather than at a hospital only.

A collegiate background gives students a broader foundation for their careers, Miss Kempf said. The school of nursing, which was founded in 1950, offers a four year curriculum with nursing practice at various hospitals in Michigan.



THIS IS WHERE the bell sounds of Beaumont Tower originate. Sitting at the carillon controls is University Carillonneur Wendell Wescott, an asst. prof.

At Beaumont Tower Carillon Brings Sounds Of University Spirit

By ROGER SHERMAN
State News Feature Writer

"The beautiful sounds of the carillon bells in Beaumont Tower bring an expression of spirit to the campus community," said Wendell Wescott, university carillonneur and asst. professor of music.

The 47 bronze bells in Beaumont Tower range in weight from 20 pounds to three tons, and produce a sound that can be heard for quite a distance, he said.

Originally, the tower had ten bells, but through contributions made by alumni and parents of students in the Development Fund, the 13 and one-half ton project was completed in January, 1959.

Beaumont Tower was erected in 1929 on the site of Old College Hall.

"The university is fortunate to have one of the best settings for carillon in the country," said Wescott.

Wescott has been playing the carillon since 1941. He is graduate of the Carillon School of Muehlen, Belgium where he achieved the highest diploma rating.

He has played the major carillons in the United States and Europe.

During the school year, the bells are played at 8 a.m. and 5 p.m. Monday through Friday and at 2 p.m. Sunday. The bells are also used for campus activities, including before and after football games and for graduation.

"We have an automatic audience," he said.

Guests are invited inside the tower at the above times to see how the carillon is played, Wescott said.

"A complete tour of Beaumont Tower will be given immediately following the recital Sunday to anyone interested," he said.

The musical selections that are played on the carillon range from light to classical music.

To hear the bells most effectively, according to Wescott, the listener should remain several hundred feet from the tower. The library terrace is an excellent listening area.

Lutheran Church Dedicates \$110,000 Educational Unit

By BOB STEWART
State News Religion Editor

Dedication services will be held at 10 a.m. Sunday for the new \$110,000 educational facilities unit of University Lutheran Church, 600 Ann St., E. Lansing.

The Reverend Harold L. Yochum, D.D., President of Capital University, Columbus, Ohio will conduct the service.

A local broadcast of the service will be presented on WJLS at 11:00 a.m. Sunday.

Open house will be held from 3 to 5 p.m. and all Lansing and East Lansing area friends, visitors and guests are welcome.



WHEN YOU'RE DEPRESSED, IT MAKES A LOT OF DIFFERENCE HOW YOU STAND.

THE WORST THING YOU CAN DO IS STRAIGHTEN UP AND HOLD YOUR HEAD HIGH BECAUSE THEN YOU'LL START TO FEEL BETTER.

IF YOU'RE GOING TO GET ANY JOY OUT OF BEING DEPRESSED, YOU'VE GOT TO STAND LIKE THIS.

The Spartan Spear Dark Blue Skies Mark Colorful Month of October

By JESS MAXWELL

Suddenly the crispness of frost tints the afternoon air and golden-red leaves float lazily to earth amid the fragrant spell of burning leaves.

October—and autumn—has arrived. October! The month of marching bands, colorful football games and happy people is among the best months of the year.

Bright red maple trees are silhouetted against a deep blue Indian summer sky. The campus begins to look like the New England countryside after the season's harvest.

People bring their jackets out of storage and walk with a new vigor in the energized air. Fallen leaves form a soft carpet and make a pleasant sound as you walk.

This is October! The month where the Red Cedar becomes dotted with red and yellow leaves, floating slowly through the root-beer colored rapids.

It is the month of the sportsman—the hunter in quest of duck, pheasant and deer.

Ahead of the crisp air of October lies the adventure of winter. May the memories of autumn last through the snow, sleet and rain. Hail October!

Ever wonder how many buildings are operated on the campus by the university? MSU owns and operates some 600 buildings, including dorms, classrooms structures and offices. The task of maintaining this



ESSENTIALLY A LOVE Story, "Hiroshima . . . Mon Amour" — to be shown Monday and Tuesday in Fairchild as part of Foreign Film Series — is also a reminder of war and the atomic bombing of that city.

In the early 19th Century seven out of every 10 persons worked on the land in the United States. Today the average is one of every 10.

Pheasant Season Opens Thursday

Michigan's 1960 pheasant and small game season opens for a two week run Thursday.

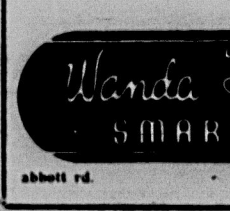
Nearly 400,000 hunters will go afield, reports the Michigan Department of Conservation.

Ever wonder how many buildings are operated on the campus by the university? MSU owns and operates some 600 buildings, including dorms, classrooms structures and offices. The task of maintaining this



THE PRICELESS LOOK \$3.98

A toast to MACSHORE'S Bavarian stein print shirt with comfortable roll-up sleeves and convertible mandarin collar. An ideal fashion accent for the "skirt 'n pants" set in wonderful DRIP DRY Cotton. High fashion colors. Sizes 30 to 38.



The State News

Published by the Students of Michigan State University. Issued on class days, Monday through Friday, during the fall, weekly during the summer term. Second class postage paid at East Lansing, Michigan.

Editorial and business offices at 341 Student Services Building, Michigan State University, East Lansing, Michigan.

Mail subscriptions payable in advance for one term, \$3. for two terms, \$4. for three terms, \$5.

Advertisement for BAY gasoline, featuring the BAY logo and text: 'THE FINEST QUALITY GASOLINE 94 plus Octane 101 plus Super Premium. Stop In Today, You Will Notice Improved Engine Performance And Additional Mileage With Your First Tankful. Check Your Savings At The Pump Too. 2516 E. KALAMAZOO AT MIFFLIN NEAR UNIVERSITY VILLAGE. ART KOEHLER MANAGER KENDALL MOTOR OILS'.



Advertisement for J. B. Towne umbrellas, featuring the text: 'Your Umbrella, Sir... The best looking way to keep dry... most practical way to save money—a J. B. Towne umbrella. Choose from a wide selection of imported handle styles including wood, bamboo, leather and ebony. These self-opening or regular umbrellas are available in patterns and the always-popular black nylon. Sensibly priced from just \$3.75. J. B. TOWNE Since 1960 211 E. Grand River'.

A large vertical advertisement for 'CAMPUS CLASSIFIEDS'. It includes a headline 'Michigan State News Campus Classifieds... Low Cost Your Key to Better Values...' and a list of various classified ads under categories like 'AUTOMOTIVE', 'FOR SALE', 'EMPLOYMENT', 'REAL ESTATE', 'FOR RENT', 'LOST and FOUND', 'PERSONAL', 'SERVICE', and 'WANTED'. Each ad includes details like car models, prices, and contact information.

Decision: 1960

Michigan Platform in Perspective

By JOAN MILLAR
State News Political Editor

Probably nothing is more confusing to the Michigan voter this year than the state gubernatorial election. The issues themselves are not clear. The differences between the major party platforms are indiscernible with a few exceptions, and fuzzy to say the least. In the race for president Nixon and the Republican administration are on the defensive against criticisms charged by Kennedy and the Democrats. But in the state campaign the shoe is on the other foot with John Swainson and the Democratic administration on the defensive against Republican charges expressed by Paul Bagwell. This, of course, adds to the voters' confusion. Let's forget about the negative for a moment and look at the positive. Briefly, here's what the Michigan parties propose for the coming election:

- | | | |
|---|--|---|
| <p>REPUBLICANS</p> <ol style="list-style-type: none"> Support of the proposed one cent increase in the sales tax with the idea that it is immediately and easily collectible. Promote service industries and increased tourist trade in Michigan. Organize labor-business-government meetings to solve Michigan unemployment problems. Strengthen the state Department of Labor to include all the functions of separate agencies. | <p>ECONOMIC POLICY</p> <ol style="list-style-type: none"> Taxes must be based on the ability to pay in the expressed belief that a sales tax would not balance the budget. Publicize industrial advantages in Michigan and increase appropriations to the Michigan Tourist Council budget. Establish a governor's council of economic advisors to seek legislation for stimulating employment. Establish separate agencies for specific labor problems. | <p>DEMOCRATS</p> <ol style="list-style-type: none"> Expand information on marketing and price information for producers and buyers. Establish a state milk commission to regulate marketing of dairy products. |
|---|--|---|

Caldwell Speaks On Educational TV

Educational Television was the topic of a talk given by John T. Caldwell, assistant manager of MSB-TV Sunday night at the first meeting of Alpha Epsilon Sigma, honorary for majors in radio and television. There are now 47 educational television stations in the country and the number is expected to grow to 70 in the next few years.

Best Selection Of New Records In Town - At

THE DISC SHOP
323 E. GRAND RIVER
OPEN EVERY EVENING

MEMO PAD and REFILL

George's Barber Shop
2 SHOPS TO SERVE YOU
211 E. Grand River, E. Linn.
109 W. Eakinson, Linn.
Modernization and Sanitation

See The Tri-Captains Of Football Crown The HARVEST BALL QUEEN

Saturday Night in Kellogg Center
9-12 p.m.
(2:00 "Late Pers")
Semi-Formal

ENTERTAINMENT REFRESHMENTS

\$4.00 For Couple **Kenny Davis Orchestra**

EXCLUSIVE AT SEARS

MSU Emblemed SCRIPTO VU-LIGHTER
The Lighter With The Visible Fuel Supply

3⁹⁵ "Charge It"

Get your lighter of remembrance. The Vu-Lighter with the visible Michigan State emblem. The permanent with that requires no service or replacement. Heavy but only a modest weight.

THURSDAY, FRIDAY AND SATURDAY SPECIALS!

50 DOUBLEDGE BLADES 49c Sears Own Quality Razor Blades	80 Yorkshire Flints - PLUS - 50c Can Yorkshire Lighters Fluid Reg. 99c Both for Only 79c
--	--

"Satisfaction guaranteed or your money back" SEARS
Prices Do Not Include Sales Tax

Newsletter Available
The Freshman Newsletter, a weekly bulletin which covers all campus events, is available to any student free of charge. Those wishing to receive it can contact John Hershey in 221 Student Services.

QUANDT Insurance Agency

Automobile Liability to \$300,000 for young and out of State drivers

We Handle Cancelled And Refused Risks

CALL IV 2-3375

SEARS

3 DAYS ONLY
Campus Styled Trim Socks

3⁹⁷ Reg. 5.98

New midwale cotton corduroy socks with latest diamond shaped pocket tabs, trim plain front styling in char-coal, tan, Italian olive Sizes 28 to 40.

SEARS

Placement Bureau

- OCT. 29, 1960**
- RICHARDS-WILCOX MANUFACTURING CO.**—Mech., Civil & Elect. (B) Engr. majors for industrial sales, product engineering, and R&D positions.
- MINNEAPOLIS-HONEYWELL** Elect. & Mech. Engr. majors & Physics (M)(D) majors for research, development, production, industrial engineering, quality control, evaluation & sales positions.
- K.V.P.-SUTHERLAND PAPER COMPANY**—Marketing (B), Gen. Business (B), & Production Mgt. (B) majors for sales positions. Packaging (B) majors for positions in related work. Chemistry (B)(M), & Mech. & Chem. (B) Engr. majors for research, production, & other technical openings.
- AMERICAN CYANIDE CO.**—Chemistry (M)(D), & Chem. (M)(D) Engr. majors for positions in R&D. Vet Pathology (D), Physiology (D), Pharmacology (D), Biochemistry (D), & Toxicology (D) majors for positions in laboratory work.
- THE MITRE CORP.**—Elec. Engr. majors for technical staff positions.
- SHELL OIL COMPANY**—Mech., Elect., & Chem. (B)(M) Engr. majors for positions in crude oil & gas production & processing work.
- EXPLORATION DEPT.**—Physics, (B)(M), Geology (B)(M) (with geophysics option), Math (B)(M), & Elect. (B)(M) Engr. majors for geophysical exploration. (Students in above fields who will have completed their junior year by June, 1961 may have interview for summer training in geophysics.)
- SHELL OIL COMPANY**—Chemistry, and Chemical Engineering majors for positions in refinery research, technology, and process development. This work is in the refinery & refinery research lab. Mech.-Met. (B)(M) Engr. majors for refinery construction, maintenance, design, power plants, & engine research positions.

SEARS

Frandor Shopping Center, Free Parking

OPEN TONIGHT 'TIL 9

Roomy and Economical Student Desk in

Solid Maple Finish
Low Priced **19.88**

Handsomely styled ponderosa pine desk. Clean simple lines harmonize with modern or Colonial setting. Mellow maple finish resists scuffing. 24 1/2 x 12 5/16 x 29-in. size Save now at Sears.

Bold and Beautiful Colored Bedspreads

4.99 Twin Bed 76 x 106-in

This handsome new plaid will lend a cheerful note to student's room. Pre-shrunk, completely washable, 100% cotton. Available in beautiful Harmony House colors: Cocoa Brown, Mint Green, Cherry Red.

Square Modern Bench Housseck 14 1/2 in. high..... 6.98 Buckles on bench or seat. 14 in square top in plastic foam filled with cotton. Plywood base. Hardwood legs.	Big 15 1/2 in. Square Lift-Tab Housseck 14 in. high..... 3.99 Moves easily with lift-tab handles. Plastic covered in heavy, Wipe or green wipe clear. Pump spring padding.	Flip-Fold 4-Pc. Snack Table Set Fold to store... 3.99 Furniture look-alike that they love most! black, white and color design. Removable steel trays, tubular steel legs.	Lovely Cotton Tufted Runner Rug 24 x 72-in. 1.99 Ideal decoration in front of fireplace, sofa, bed. Six colors in smart trend design.
--	--	---	---

For Those Cold Winter Nights Coming...

Automatic Electric Blanket

Twin Bed 10.88
Double Bed 11.88

Let the night go down to zero. Your Automatic blanket will hold the heat point you selected. Machine washable; guaranteed for TWO full years. 70% rayon, 20% cotton. 10% nylon blend. 5 beautiful colors to choose from. Get it at Sears today.

"Satisfaction guaranteed or your money back" SEARS
Prices Do Not Include State Sales Tax

Hours: Mon. 12 Noon to 9 P. M.
Thurs. Fri. 9:30 A. M. to 9 P. M.
Tue., Wed., Sat. 9:30 A. M. to 5:30 P. M.
2131 E. Michigan Phone IV 9-7321

Campus Classifieds . . . Low Cost

Prepare for Irish

Spartans Polish Offense, Defense

The Spartan gridder finished up heavy scrimmages in preparation for Saturday's game against Notre Dame as the alternate unit went through the final heavy workouts Wednesday.

On Tuesday the entire squad went through scrimmages as the Spartans attempted to polish their offense and defense for the Fight-Ing Irish.

Although State has piled up 673 yards rushing in the first three games this season, it has not been able to score consistently with but six touchdowns in those games.

"We have been moving the ball

The Spartan camp suffered the temporary loss of sophomore end Ken Jones, who will be out with a broken rib.

Dutch Kemmerling, the soccer-football player is still working with the football squad, although he will be going with the soccer squad Saturday to St. Louis.

Charon Top Big 10 Scorer

CHICAGO, (AP)—In his first Big 10 football game, stellar sophomore quarterback Ron Miller of Wisconsin grabbed the lead in conference total offense and in passing.

As the Badgers spilled Purdue 24-13 last Saturday, the admit Miller completed 12 of 23 passes for 203 yards. He also carried the ball 9 times for 39 yards, giving him a pacesetter total of 242 yards.

Official conference statistics also credited another quarterback, Wilburn Hollis of Iowa's tricky Hawkeyes, with the lead in the rushing department. Hollis, in two conference games, has carried 27 times for 150 yards. The best rushing average belongs to still a third Big 10 quarterback, Ohio State's Tom Matte with 129 yards in 13 rushes for a 9.9 mark in the Buckeye's 34-7 win over Illinois.

In scoring, Hollis and Carl Charon, Michigan State fullback, share the lead with 18 points each. Wisconsin's great sophomore end, Hugh Richter, leads in receptions, snagging 7 Miller tosses Saturday. Purdue's Bernie Allen, also a quarterback, has the best punting average, 42.3.

The No. 14 worn on his jersey by star MMichigan State halfback Gary Ballman has a great tradition. Other wearers were All Americans Lynn Chandross and Walt Kowalczyk and Rose Bowl hero Billy Wells.

Sailing Club Elects Officers

The MSU sailing club elected officers for the coming school year Tuesday.

The officers elected were Commodore, Jerry Walker; Vice-Commodore, Jim McNiff; Treasurer, Rosemary Bolen; Recording secretary, Debby Baker; Corresponding secretary, Ellen Hill; Fleet captain, Skip Martin; Racing Team Captain, Al Kranz.

The club also discussed the buying of new boats and the coming races of October 22. Crews will go to Delaware, Ohio, for the Ohio Wesleyans Women's Championships, and to Lafayette, Indiana, for the Purdue University Invitational.

In a team race with the University of Michigan last weekend, the MSU club won five of seven

races and won the overall trophy. The trophy is now on display in the IM building.

Mr. Universe To Perform


Mr. Universe of 1960, Bruce Randall, will give a weight lifting and physical fitness exhibition today in the IM Sports Arena at 7:30.

The exhibition will take 45 minutes and is open to the students at no cost. This exhibition was arranged with the cooperation of the Spartan weightlifting club.

FRATERNITIES ELECT KEN HANCE A.U.S.G. REPRESENTATIVE

MY IDENTITY IS KENNEDY FOR AUSG

Representing Sororities



MORT on the H-Bomb "There's no appreciable increase in radioactivity, but don't plan a large family."

An Evening With **MORT SAHL** and The Limelights

8:15 p.m., Saturday, October 29, 1960

Lansing Civic Center Auditorium

Reserved seats only. Prices: \$1.20, 1.80, 2.50 and 3.50. Tickets on sale in East Lansing at the Campus Book Store. Mail order — send with self-addressed, stamped, envelope to Arbaugh's, 8. Washington, Lansing.

Key

to your personality

Your writing paper expresses your personality when you visit by mail. That's why you owe it to yourself to have your pick from Eaton's lovely stylings of personality perfect papers which we feature in Open Stock.

Open Stock means that you can always get more matching paper or envelopes that're separately packaged. In white and sensitive colorings, in heavy textures and styles. Economical, too!

So come in soon and see our collection of

Eaton's FINE LETTER PAPERS IN OPEN STOCK

POWER STATIONERS

LUCON (LANSING) • PHONE ED. 36944

Hit No. 1 Shows 1:15 - 4:55 - 8:40

ALL THE YOUNG MEN featuring Mort Sahl

PLUS New Comedy Hit:

'I'M ALL RIGHT JACK'

Starring **PETER SELLERS** IAN CARMICHAEL TERRY THOMAS

A MULTICOLOR PRODUCTION - A COLUMBIA PICTURES RELEASE

Shown Today 2:45-6:30 10:10

"A COMIC MASTERPIECE ... HILARIOUS FARCE ... CONSTANTLY FUNNY!" —McCALLS MAGAZINE

"SURE TO TICKLE THE FANCY! SELLERS IS BRILLIANT!" —REDBOOK MAGAZINE

"The Brightest, Liveliest Comedy This Year!" —Rosalie Crowther, N.Y. Times

Milk Maid

MILK & Ice Cream

CASH & CARRY MILK

1/2 Gal. Grade A Homogenized

39c

1201 E. Grand River East Lansing 3055 E. Mich. Just West of Sears

LANSING FARM PRODUCTS CO.

GLADMER SUPER BARGAIN DAY All Day Preview of Two Features

Every second it's on the screen John Ford's **Sergeant Retledge** grabs you, grips you and stuns you with its suspense!

JEFFREY HUNTER CONSTANCE TOWERS BILLIE BURKE

Plus: Co-Feature at 2:50 - 6:20 & 10:00

BATTLE IN OUTER SPACE

ENDS TONIGHT — "CARRY ON NURSE"

PROGRAM INFORMATION CALL ED 2-3817

STATE EAST LANSING PHONE ED 2-2864

HOME OF THE BEST IN FOREIGN FILMS

ADULTS 90c — FIRST SHOW 7 P.M.

STARTS FRIDAY

THE SECOND IN OUR GREAT FOREIGN FILMS — DON'T MISS THIS

AN EXTRAORDINARY FILM by Ingmar Bergman

"... wholly extraordinary, being at once mystical, realistic and poetic ... it stands in the company of the great foreign films." —Archer Winsten, Post

THE SEVENTH SEAL

A piercing and powerful contemplation of the passage of man upon this earth. —Cineaste, N.Y. Times

A "Running, Jumping and Standing Still" With Peter Sellers

You Liked "Wild Strawberries" You Will Love This

NOW **MICHIGAN** Program Information Dell IV 2-3905

Feature 1:00-2:05-3:05-7:15-9:25

THE CROWDED SKY starring BADA ANDREWS-ANITA FLEMING EFFREN ZIMBALIST, JOHN KERR-ANNE FRANCIS-KEENAN WYNN and TROY DONAHUE From WARNER BROS. TECHNICOLOR

ADDED "BROKEN LEGHORN" Cartoon — Fox News

STARTS TOMORROW SUPER BARGAIN DAY ALL DAY PREVIEW OF TWO FEATURES "Dark at the Top of the Stairs" & "Crowded Sky"

Dark at the Top of the Stairs

THE KING OF CRIMINALS YOU MUST NEVER BE AFRAID OF ... THE KING OF BROADWAY HIT-PLAY THAT BECOMES A BOMB-SHELL ON THE SCREEN!

PRESTON-McGUIRE THE AMER-INDIA LANSING-SUNSHINE THEATRE

NOT A SIGN OF A SLIP-UP!

Typing errors disappear like magic when you use Eaton's Corrasable Bond. Never a trace of the word that was erased; errors can be flicked off Corrasable's special surface with an ordinary pencil eraser. Saves re-typing, time and money. And the sparkling new whiteness gives all typing a new brilliance. You can't make a mistake getting Eaton's Corrasable. (Rhymes with erasable.)

Eaton's Corrasable Bond is available in light, medium, heavy and onion skin weights. In convenient 100-sheet packets and 500-sheet ream boxes. A Berkshire Typewriter Paper, backed by the famous Eaton name.

Made only by Eaton

EATON'S CORRASABLE BOND Typewriter Paper

EATON PAPER CORPORATION PITTSFIELD, MASSACHUSETTS

Uppermost in a college man's mind ...

OUR SWEATERS! SWEATER HEADQUARTERS — MAIN FLOOR —

THE HIGH V-CARBONAN — SHAWL COLLAR ALL ARE HERE AND IN VARIETY OF POPULAR COLORS

\$12.95 to \$16.95

H. Hostichek Bros. 113 N. WASHINGTON

CAMPUS BOOK STORE

131-133 E. GRAND RIVER ACROSS FROM UNION

Yanks Whip Bucs; MSU Soccer Goalie Sees St. Louis as Revenge Game

Series Even, 3-3

Richardson Stars In 12-0 Rout; Ford Gains 2nd Win

PITTSBURGH, (AP)—The New York Yankees opened up their big guns again behind the sparkling pitching of Whitey Ford to crush the Pittsburgh Pirates 12-0 and tie the World Series at 3-3. The seventh and deciding game will be played at Forbes Field today.

It was the third runaway for the Yankees, who lost three tight thrillers to the clanking Pirates. The Yankees broke and tied a back of World Series batting records, headed by surprising Bobby Richardson.

The little second baseman, who hit only 252 and batted in only 26 runs during the regular season, drove in three runs with two triples. This gave him 12 RBIs breaking the World Series record of 10 set by Yogi Berra in 1956 and tied by Ted Kluszewski in 1959, both in seven games.

Ford, who pitched a four-hitter in the Yankees 10-0 third game victory, earned his second shut-out of the series with a seven-hitter. He fanned five and had the Pirates hitting into the dirt most of the way.

It was Whitey's seventh World Series triumph against four defeats, and the first time he has won a series game away from Yankee stadium.

Ford's scratch single with the bases loaded and two out in the second inning got the Yankees off in front. They broke the game wide open in the third and blasted right-hander Bob Friend from the mound with their five-hit, five-run attack for a 6-0 lead.

A two-run single by Mickey Mantle and Rich-

ardson's first triple—a two-run blow—were the big hits of the spree-off Friend and right-hander Tom Cheney.

Vincegar Bend Mizell blanked the Yanks in the fourth and fifth innings but the rampaging New Yorkers resumed their blasting against lefty Fred Green and right-hander Clem Labine in the sixth, seventh and eighth innings.

In the sixth, the Yanks clubbed Green and Labine for two runs on Cleve Boyer's triple and singles by Tony Kubek, Roger Maris and Berra.

In the seventh, catcher John Blanchard's double, Richardson's second triple—tying a series record for triples in one game—and Ford's sacrifice bunt made it 10-0. In the eighth, a single by Maris, a force play by Mantle and a steal of second by Mickey, a single by Berra and another double by Blanchard accounted for the final two runs.

Blanchard also rapped a single for three out of four. He got into the game when catcher Elston Howard was hit by a pitched ball in the second inning and was forced to leave the game. Howard suffered a fracture of the little finger of his right hand. With Berra playing in left field, Blanchard took over behind the plate.

Ford only walked one batter. He received fine support from his mates, who reeled off three double plays.

A partisan crowd of 38,500 watched in dismay as the Yankees piled up the most lopsided shut-out in World Series history.

By CURT RUNDLE.
Ted Saunders, goalie for the Michigan State soccer team, expects his teammates to go to St. Louis next Saturday intent on revenge.

Last year the bootmen were beaten by St. Louis 4-2. It was one of the two defeats suffered by the Spartans in four years.

"OUR TEAM is hungry for this win," said Saunders. "They should be out to avenge last year's defeat."

Saunders is very pleased with this year's team. He thinks they have a good chance of going all the way to an undefeated season.

Among his teammates, he points out Rubens Filizola, left halfback, and Cesar Dominguez, inside right, as promising players.

"RUBENS IS great," he said. "Cesar is a good player and a wonderful guy. Both are a big help to the team."

Saunders hails from Kingston, Jamaica, where he played goalie for St. George's college. He was an all-league selection while playing in the Detroit and Windsor amateur ranks.

He is presently a junior in the school of industrial education and he expects to graduate in 1962.

SAUNDERS PLAYS cricket as well as soccer. He also enjoys swimming and tennis, but he doesn't get too much chance to do either.

He used to raise tropical fish as a hobby. "At one time I was a head on them," he said. "But I outgrew that a few years ago."

Saunders regards last week's shutout as a good break and hopes that there will be many repetitions of such breaks in the future.

RICHARDSON

TED SAUNDERS
... Spartan starting goalie ...

VARSAITY DRIVE-IN

1227 E. Grand River
OPEN 11 A.M. TO 2 A.M.
Sun.—Open at 5 p.m. (Closed on Mon.)
DELIVERY SERVICE
8:30 P.M. TO 1:30 A.M.
ED 2-6517

MUTUAL BENEFIT LIFE

831 N. Washington Ave., Lansing
IV 4-8417 or IV 5-4810

Why Not Plan Now . . . For A Career That Attracts Many Men From Other Fields?

Want the opportunity to make high earnings while studying at M.S.U.? Many energetic students have earned higher annual incomes with our Company in only two years than they could expect to achieve yearly in a lifetime of other business employment.

We do a quality business in the life insurance field. We maintain a continuing program of training with modern sales aids to make this possible. If your standards are high, and you are enrolled at M.S.U., write or phone:

James H. Pohl, Supervisor (M.S.U. '60)

SPECIAL

BORDEN'S GLACIER CLUB
ICE CREAM
49c
ONE HALF GALLON
at
OADE'S GROCERY
OADE'S HAS A COMPLETE LINE OF PARTY FOODS AND BEVERAGES.
OADE PREDICTS THE SCORE.
STOP IN TODAY AND CHECK THE SCOREBOARD.
OADE'S GROCERY
2000 E. KALAMAZOO IV 9-8840
Near University Village

IM Football Independents' Season Opens With Close Games

By BRUCE FABRICANT
State News Intramural Writer

The 1960 edition of intramural football opened with a full schedule of games Tuesday night. A hardhitting Latecomer squad rocked the TD's 13-2, while SAECA outlasted the Campus Court, 13-7.

Lou Zivic, Latecomer field general, sparked the victors with two touchdown aerials. The tall, scored in the first and third periods, proved sufficient to win as the losers passing attack failed to materialize.

THE FIRST SCORE made in 4:50 of the opening session, was registered on a 60-yard march. After running end for a 35 yard gain, Zivic hit Chuck Mortenson for the initial six points.

The TD's finally scored after the start of the third quarter. Defensive lineman Bill Walsh nailed Zivic in his end zone for the losers only two points in the game.

"A 40 yard pass from Zivic to Howie Levy marked the Latecomers last scoring drive in the third period.

EAST AND ALEUT SAECA rallied from a scoreless first half, to notch an early season victory over the Campus Court, 13-7. Rebounding from a lopsely

Sophomores Dot Irish Starting Squad

Box Score

NEW YORK (A)	AB	R	H	RBI
Bever, 3b	4	1	1	0
Good, 1b	5	2	1	1
Merrill, cf	4	2	2	4
Mantle, lf	4	2	1	2
Berra, rf	4	2	2	2
LeMay, ss	4	0	0	0
Shawhan, 1b	4	0	2	1
Howard, c	4	0	0	0
A. Arns	4	0	0	0
Richardson, 2b	4	2	1	1
Richardson, 2b	4	1	2	1
Ford, p	4	0	1	2
TOTALS	41	12	17	12

PITTSBURGH (N)

AB	R	H	RBI	
Virdon, cf	4	0	1	0
Grant, ss	4	0	1	0
Walsh, p	4	0	0	0
Chambers, cf	4	0	0	0
Clayton, 1b	4	0	0	0
Trindle, lf	4	0	0	0
Smith, rf	4	0	2	0
Hoak, 2b	4	0	0	0
Mason, 3b	4	0	0	0
Friend, p	4	0	0	0
Harner, p	4	0	0	0
St. Baker	4	0	0	0
Mason, p	4	0	0	0
McNeil	4	0	0	0
Connel	4	0	0	0
Lahina, p	4	0	0	0
Labine, p	4	0	0	0
DeScheldt, ss	4	0	0	0
TOTALS	42	0	7	0

IM Football
East Shaw 4, East Shaw 7, 6
E.S. 9, 12; E.S. 4, 6
Johns 12; Newkirk 6
Newkirk 11; Ellsworth 6
Cassano 20; P. Phil 4
Johannes 12; Vite 14
Matta 28; Howland 6
Cato 29; Colleton 6
Entenberber 7; Aiken 2
Tonghin 4; Lathos 4
Boal 14; Bauer 9
Latschere 5; Saperstein 6
West Shaw 9, 11; W. Shaw 4, 6

IM Highlights

SATURDAY THE IM outdoor pool will close for the season.

THE DEADLINE for the IM best ball golf Tournament is 12 noon today. All interested must register at the IM office. Check for the starting times in Friday's State News.

Sport Shorts
Clarence "Biggie" Munn, Michigan State's athletic director, coached the track team at his alma mater, Minnesota, in 1934 and 1935.

Michigan State wrestling coach Fendley Collins and his new assistant Grady Peninger were outstanding mat performers as undergraduates at Oklahoma State.

Christian Science Organization

CORDIALLY INVITES YOU AND YOUR FRIENDS TO A
Free Lecture on Christian Science

Lecturer . . . **ELBERT R. SLAUGHTER, C.S.**, of Dallas, Texas

Place . . . **MUSIC BUILDING AUDITORIUM**, West Circle Drive

Time . . . **THURSDAY EVENING, OCTOBER 13, 1960 at 8:00 o'Clock**

Complete Optical Service

Eye Examined
Glasses Fitted
No Appointment Necessary

Office of: Drs. J. Christie and H. Beckwith, Optometrists

Redwood & Ross

205 E. GRAND RIVER EAST LANSING

Orion Pile Lined Tan & Olive \$13⁹⁵
Shawl Collar \$14⁹⁵

State News SPORTS

Night Sports Editor - John Schneider
Assistant - Carl Benner

Wrestling Meeting
There will be squad meetings of both the freshman and varsity teams this afternoon in 215 IM building according to fencing coach Fendley Collins.

Staffers Pick
The sports staff predicts:
MSU over Notre Dame
Illinois over Minnesota
Iowa over Wisconsin
Michigan over Northwestern
Indiana over Marquette
Ohio State over Purdue

Serving You

DOHM'S BARBER SHOP

B-16 FRANDOR AVE.
(Concourse)
Frantor Shopping Center

FRATERNITY MEN!

PROMOTE FRATERNITY PROGRESS AND RECOGNITION IN STUDENT GOVERNMENT

VOTE for Don Carden

I. F. C. REPRESENTATIVE
VOTE TODAY IN THE UNION

Styles For Wet Weather

with the look of luxury and excellence



Fashioned for style conscious career men and campus leaders. You'll always look your best rain or shine in one of the many styles of Rain-topcoats found at Holden and Reid.

\$19⁹⁵

Other Coats from \$22.95 to \$50.00
Size 34 to 50 on Regular, Shorts, Longs, Ex. Longs
30-60-90 Day Charge Accounts

HOLDEN REID

FRANDOR SHOPPING CENTER
"Famous Brands for Dad and Lad"

Michigan Economy Unsound

State Growth Rate Lags

By REV PRYSTASH
State News Staff Writer

The automobile has made Michigan great, but it may be its undoing.

This is the opinion of Andrew F. Brimmer, assistant professor of economics.

"Michigan economy is essentially based on the automotive industry," said Brimmer. Greater diversification of industry and the creation of new industries is necessary to reduce the dependence of the state's economy on automobiles, he said.

New industries are needed in Michigan if the present rate of economic growth is to be continued, said Brimmer.

"Michigan is still behind the nation in its rate of economic growth," he said, "however, the situation is better than the recession years of 1957-1958."

The overall demand for Michigan products, particularly automobiles, is not as great as it was in 1955, Brimmer said. The rapid rate of automation is decreasing the need for labor in the state, he explained.

The state should expand its research and development facilities, said Brimmer. He cited the General Motors technical center as an example.

"Michigan must remain a manufacturing and service state, because the nation as a whole is on a manufacturing decline," said Brimmer. He said that services would include vacation opportunities in the state and the development of Detroit as a financial center.

The state has a surplus of labor and a large supply of natural resources to aid in economic growth, added Brimmer. However, Michigan is making relatively little progress in wiping out the backlog of unemployment, he said.

Robert P. Briggs, president of the Michigan Chamber of Commerce, recently gave a speech on campus and said that the reduction of business taxes will expand business.

Briggs said that reduced taxes on business will improve our competitive position and result in lower product cost.

Brimmer said that this reduction of business taxes might or might not expand business.

"If there are no other cost increases," said Brimmer, "reduced business taxes might result in lower product cost."

"However, this may also result in higher profits, rather than lower costs," he continued.

Michigan has a strong market for sales, said Briggs. The question, commented Brimmer, is whether or not the market is a growing one.

Both men agree that Michigan is a long way from achieving its goal of economic growth, but studies indicate that we are moving in the right direction.

Media Honorary Rush

Open rush for Alpha Epsilon Rho will be held for all four classes of students majoring in radio and television, tonight at 7 p.m. in Room 35 of the Union.

The honorary has devised a ship for all students so they can gain points toward membership eligibility.

All media majors are invited to come to learn about the honorary and its activities.

Information

LUTHERAN STUDENT ASSOCIATION—12:10 p.m., University Lutheran Church, Grad. student-Faculty lunch

SPARTAN CHRISTIAN FELLOWSHIP — 7:30 p.m., 23 Union

AMERICAN BAPTIST STUDENT FELLOWSHIP — 7:30 p.m., Alumni Chapel, Rev. Scott Irvine, Speaker

2X4 CLUB—7:30 p.m., Forestry Cabin

KAPPA PHI — 7 p.m., Wesley Foundation

YOUNG SOCIALIST CLUB—8 p.m., Parlor C, Union, Debate and open discussion to follow. All welcome.

PHI ETA SIGMA—6:45, Old College Hall, Executive meeting, all members invited.

AMERICAN SOCIETY OF CIVIL ENGINEERS—8:30 p.m., 33 Union

PHI GAMMA NU—7 p.m., 41 Union

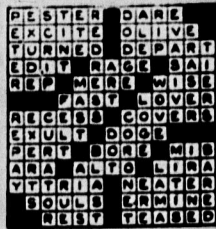
HILLEL—7:30 p.m., Hillel House, Synagogue Tora service and Oneg Yom Tov

MORTAR BOARD—6:30 p.m., 415 Park Lane

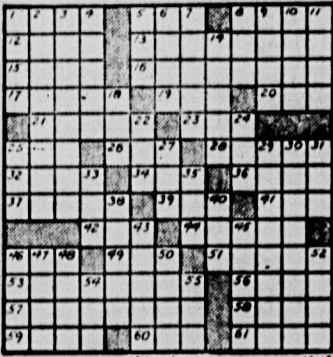
Crossword Puzzle

ACROSS
1. Gaiter
5. Eat the evening meal
8. Passing fashions
12. Tissue
13. Incidental
15. Hawaiian royal person
16. A mountain State
17. To mix
19. Particle of negation
20. Stack of hay
21. Up to the time that
23. Highest point
25. River in Ecuador
26. Two-wheeled carriage
28. Game of chance

DOWN
1. Pierce
2. Easy to understand
3. Estrange
4. To corrupt
5. Dry
6. Up and on
7. Steersman
8. In favor of
9. First man
10. Queen of Carthage



Solution of Yesterday's Puzzle



P. R. Time 28 MIN. AP Newsfeatures 10-13

stride through cold weather in style
CORDUROY
STADIUM
COATS with blanket plaid linings



Corduroy is the big Fabric this fall and its twice as smart with a bulky knit collar, twice as warm with an all-wool plaid lining. It's a standout in Olive or Antelope Shades.
\$39.95
others from \$29.95

SMALL'S
211 S. WASHINGTON

CORAL GABLES' ILFORNO .. RESTAURANT ..

'the name that made PIZZA famous in Lansing'

OPEN DAILY 5 P.M. - 2 A.M.

— ALSO SPECIALIZING IN —
★ ITALIAN SPAGNETTI ★

STEAKS - CHICKEN - SEAFOODS

For Something Really Different—Try Our
BAR · B · Q · RIBS

Dinners • Snacks • Sandwiches • Pizza

★ PHONE ED 7-1311 ★

COMPLETE TAKE OUT SERVICE

State Civil Service Steps Up Recruiting

The State Civil Service Commission plans to step up its recruiting campaign to interest more college graduates in career service with the state, Franklin K. DeWald, Director of the State Civil Service Commission, said today.

"We need more college graduates to fill vacancies in engineering, social science, and medical fields to help Michigan build its roads and adequately man its hospitals and other institutions. We also need college graduates in accounting, personnel, conservation, and other departments of state government."

"Michigan is in a better position to attract high caliber college level graduates into state service than many states because of its strong civil service system backed by constitutional amendment."

"It's our job to convince college students of the fact that the Michigan civil service system provides employment and promotion on the basis of competitive examination and merit, has eliminated political dismissals and demotions."

"WE NOW HAVE a governmental framework that guarantees true career service backed by competitive pay rates and working conditions."

DeWald said he estimates state agencies could use about 1,000 college graduates each year. The state has 30,000 employees classified under civil service and an annual turnover of about 3,000 persons.

JOHN BARON

"Viewpoint" Begins 5th Year Sunday

Viewpoint, WKAR radio discussion feature which presents faculty members on topics of timely and timeless interest, begins its 5th year of broadcasting Sunday, at 2 p. m.

Major John Barron, Air Force ROTC instructor who originated the show and conducts the discussion on the air, will have as his guests Dr. Joseph LaPalombara, head of the Political Science Department, and Dr. Roger Westcott, Director of the African Language Project on campus and an anthropologist. They'll discuss "Mr. K's challenge to the UN."

More than 200 professors and top administrative officials of the university have appeared on Viewpoint in its previous four years.

The Michigan State CONSERVATIVE CLUB

presents

L. BRENT BOZELL

Washington Editor of NATIONAL REVIEW

"Loyalty Oaths and Academic Freedom"

Tuesday, October 18, 8 P.M.

Room 33, Union Building

Michigan State University

All MSU Students and Citizens of Michigan

Are Cordially Invited as Guests

FREE ADMISSION

LIEBERMANN'S

for entertaining...
BUDGET PRICED GLASS



Clear crystal servers in attractive shapes that go so well with any decor. They're perfectly sized to fill many needs.

★ 6" CRYSTAL BOWLS \$2.95
SET OF EIGHT

★ 6" DESSERT PLATES \$2.95
SET OF EIGHT

24-PIECE TUMBLER SET

Eight large tumblers, eight medium tumblers and eight juice cups in attractive Scandinavian design. Clear fire-polished glass. \$4.49

Liebermann's

EAST LANSING . . . 209 E. Grand River
DOWNTOWN 107 S. WASHINGTON

Bridge Tournament

Judy Baker, UB student services chairman, announced that the bridge tournament, which was to begin tonight, will be delayed one week, due to the Royal Ballet

performances. The first night of tournament play will be Oct. 20 at 7 p.m. Signups are still being accepted at the Union Board desk in the Union concourse from 10 a.m. 4 p.m.

Bow Hunter Bargains



25% OFF
Shakespeare Bows

Hunting Arrows
Camouflaged Suits
Quivers

Rental Shotguns
For Bird Season

LINK'S SPORT SHOP

227 Ann St. Phone ED 2-6116 East Lansing

only at MARIA'S

ZION PRODUCTS

KOSHER CORNED BEEF
PASTRAMI
PICKLED TONGUE
KOSHER FRANKS
KOSHER KNOCKWURST

DELICATESSEN

FRESH HOMEMADE

ITALIAN BREAD and ROLLS
ITALIAN SAUSAGE
LASAGNA and RAVIOLI
PIES, CHEESECAKE, & PASTRIES

FRESH MARIA'S
PIZZA

IMPORTED CHEESE & CANNED GOODS

MARIA'S
DELICATESSEN

1808 · 1810 · 1812 S. WASHINGTON
LANSING

OPEN
DAILY

10 a.m. · 3 a.m.



SALE!

Rayon Challis Sleepwear

3.99

Wonderful timely value! Toasty warm rayon challis sleepwear with light-as-a-feather comfort! Floral wreath print or pretty pastel solids in granny gown, popover p.j., and shift gown styles. White, pink, or blue with ruffled long sleeves, wide collars, and yokes with lace and embroidery inserts. Buy several at this savings! SMALL sizes.