



VIEW FROM ABOVE -- Registrar Horace C. King is checking the success of the new registration procedures here as he observes the registration entrance lines in the IM Building. --Photo by Larry Fritzel

Registration Smooth Under New System

The winter term surge into the IM Building came to a halt late Tuesday as computers buzzed out class lists, cash registers rang up fee receipts and students prepared to start classes today.

For this term, however, most enrollment procedures were completed in advance and class schedules were filled before students entered the IM Building.

Less than 1,000 students did not have full schedules before final registration Monday and Tuesday, Registrar Horace C. King said. His office has modified registration procedures employed prior to this term.

With the University's 1401 computer, most of the headaches of past registration were overcome in advance.

After students enrolled in November for winter courses, the information was fed into the giant computer.

Then the desired student schedules and class listings were sent to each college so department heads could determine demand for courses and add or drop sections whenever possible.

"This new system has for the first time given departments a chance to look at projected enrollment figures before actual registration began," Assistant Dean of Social Science J. Geoffrey Moore said. "This was a great help in planning new class sections and making necessary adjustments ahead of time."

"We are trying to keep the present system of letting students schedule their own classes," King said. "We think this is superior to many universities which plan schedules for the students."

"This system still gives students personal attention that isn't available at other universities." For the first time, students were allowed to drop and add courses during registration this week.

"This eliminates lost time after classes begin," King said. With new drop and add procedures, some class lists might not be available until the second day of classes, he said.

However, students will also be able to drop and add classes starting Monday.

Under the new arrangement, the total time for final registration was cut from three to two days. Since most students completed schedules before January, they had only to pay fees and secure activity books.

Much of the credit for the efficiency processing about 140,000 class cards should go to Frank Martin, the director of the University Data Processing, King said.

"His staff works around the clock to see that class lists are available as soon as possible," he said.

King reports that he has received some criticism for changing registration procedures drastically, but he said tests and incorporated procedures have streamlined the system.

"The registration procedures are constantly being evaluated," King said. "And as the University keeps pace with new developments, we hope to streamline the process even more."

Exact enrollment figures will be available today.

The letter sent to parents said in part:

"Soon the most important week in your son or daughter's college career will be here..."

Because standards here at Michigan State University are very high, the pressure will be on.

"Being students ourselves we are aware of the complete loneliness one feels during 'finals.'"

A boost from home helps overall morale and studying is easier. We hope to help you help your son or daughter," it continued.

"We have designed a package--a six-pound mixture of fruit and candy--that will be delivered with an appropriate good luck card to your son or daughter. The cost of the package will be just \$3.50 and will be delivered on the day before the beginning of final exam-

inations. In addition to being a morale booster and because many meals are skipped during final week, the gift package will compensate for food losses."

The letter was over the signature--Gallen Smith, MSU class of '65.

Dean of Students, John A. Fuzak said this offer had nothing to do with MSU. He said, however that many checks have been mailed to his office and many letters have come from parents.

"We had a similar offer before known as the 'panic pack,'" Fuzak said.

Gallen Smith denied any connection with the former offer. Fuzak himself received one of the "panic packs" but estimated that its value was not very high.

"We objected to the implication that the University was involved," he said.

He told parents in return letters that they might send students a few extra dollars to buy their own food.

Smith said about \$50 parents had responded to the letters and that anyone dissatisfied with the offer could get a refund.

Smith said one student had asked for a refund and he submitted it to the home office of Student Enterprises Inc. in Bloomington, Ind.

Before coming here, Miss Lee earned her bachelor's and master's degrees from the University of Minnesota. She also taught high school in Minnesota.

The new dean is a member of the American Home Economics Association, the Adult Education Association, and Omicron Nu, Phi Upsilon and Phi Lambda Theta, home economics honoraries.

Dean Porter has administered the College of Home Economics since 1956. The college, under her administration has placed increased emphasis on research and continuing education. It is the 4th largest in the U.S.

Easy To Spot
TUCSON, Ariz. (AP)—The license plates stolen from Robert Orms' car should be easy to spot. Arizona plates are blue with white letters. The plates stolen from Orms, who recently returned from the South Pacific, are yellow with black letters.

They say, "14185 -- Okinawa."

Kremlin Remains Mum Over LBJ Invitation

'Apple A Day'--MSU In Dismay

By JIM STERBA
State News Staff Writer

Many freshmen students plus University officials are looking with dismay at boxes of fruit sent by consoling parents to their sons and daughters during exam week in December.

Actually the fruit was ordered by parents from Student Enterprises Inc., whose campus representative is Gallen Smith, a senior from Covert.

Student Enterprises Inc. sent a letter to parents of all freshmen, Smith said, with an offer to provide a fruit package for students during finals week.

The cost of the fruit package was \$3.50, but Richard Rouse, Pontiac freshman, said the fruit package was hardly worth the price.

His package containing two bananas, two oranges, eight apples and a roll of candy, which he valued at no more than \$1.10, using local prices.

The letter sent to parents said in part:

"Soon the most important week in your son or daughter's college career will be here..."

Because standards here at Michigan State University are very high, the pressure will be on.

"Being students ourselves we are aware of the complete loneliness one feels during 'finals.'"

A boost from home helps overall morale and studying is easier. We hope to help you help your son or daughter," it continued.

"We have designed a package--a six-pound mixture of fruit and candy--that will be delivered with an appropriate good luck card to your son or daughter. The cost of the package will be just \$3.50 and will be delivered on the day before the beginning of final exam-

inations. In addition to being a morale booster and because many meals are skipped during final week, the gift package will compensate for food losses."

The letter was over the signature--Gallen Smith, MSU class of '65.

Dean of Students, John A. Fuzak said this offer had nothing to do with MSU. He said, however that many checks have been mailed to his office and many letters have come from parents.

"We had a similar offer before known as the 'panic pack,'" Fuzak said.

Gallen Smith denied any connection with the former offer. Fuzak himself received one of the "panic packs" but estimated that its value was not very high.

"We objected to the implication that the University was involved," he said.

He told parents in return letters that they might send students a few extra dollars to buy their own food.

Smith said about \$50 parents had responded to the letters and that anyone dissatisfied with the offer could get a refund.

Smith said one student had asked for a refund and he submitted it to the home office of Student Enterprises Inc. in Bloomington, Ind.

Before coming here, Miss Lee earned her bachelor's and master's degrees from the University of Minnesota. She also taught high school in Minnesota.

The new dean is a member of the American Home Economics Association, the Adult Education Association, and Omicron Nu, Phi Upsilon and Phi Lambda Theta, home economics honoraries.

Dean Porter has administered the College of Home Economics since 1956. The college, under her administration has placed increased emphasis on research and continuing education. It is the 4th largest in the U.S.

Curfew Aimed At Indonesia
KUALA LUMPUR, Malaysia. (AP)—Malaysia imposed a curfew on territorial waters off the southern tip of the mainland Tuesday in anticipation of new Indonesian guerrilla raids.

A communique said the dusk-to-dawn ban on ship movements covers the southern coast of Johore state, next to Singapore, where a number of Indonesian infiltrations have taken place.

The curfew was the latest in a swift series of developments following reports of an Indonesian military buildup in bases surrounding Malaysia. British warships already patrol the area.

Indonesia's decision to quit the United Nations has been taken by Malaysia as further indication the Indonesians want to be free to mount a major offensive against the federation.



JEANETTE LEE

Home Ec Receives New Dean

Jeanette A. Lee, professor of home economics, was appointed dean of the College of Home Economics Dec. 17 by the Board of Trustees.

She has been acting dean since last July. She will succeed Theima E. Porter who will retire July 1, 1965.

Miss Lee came to MSU in 1957 as an instructor of foods and nutrition. She became a professor in 1963.

Before coming here, Miss Lee earned her bachelor's and master's degrees from the University of Minnesota. She also taught high school in Minnesota.

The new dean is a member of the American Home Economics Association, the Adult Education Association, and Omicron Nu, Phi Upsilon and Phi Lambda Theta, home economics honoraries.

Dean Porter has administered the College of Home Economics since 1956. The college, under her administration has placed increased emphasis on research and continuing education. It is the 4th largest in the U.S.

Books Available
About 700 books are available through the All University Student Government (AUSG) book exchange.

Lists of books available are in all residence halls and some classroom buildings. They are being bought and sold at a price midway between those paid and charged for used books by local book stores.

Congress Meets
Student Congress will meet at 7 p.m. today in the Con-Con Room of the International Center.

Speaker Howie Wilkins said that the meeting will consist mainly of winter term organizational planning.

Increasing shifts in responsibility from the University and parents to students is a major consideration of a five-member sub-committee of the Faculty Committee on Student Affairs set up to study the whole area of off-campus housing.

The group, established at the end of last term, held its first meeting during the Christmas vacation.

Louis F. Hekhuis, director of student activities and committee chairman, said MSU's tremendous growth, which has prompted examination of almost all areas of the University was a major

reason for the establishment of the study group.

"Most schools have been involved in this area for a much longer time than MSU has," he added.

One consideration of the study group concerns a letter which is mailed to parents of all students 21 and over living off-campus advising them of the responsibilities involved.

He emphasized that the letters are not sent to parents of graduate or married students, although a few have been mailed out due to clerical errors or errors on housing cards.

Hekhuis said recommendations by the study group may result in relaxation of some present social regulations governing possession of alcoholic beverages and entertaining members of the opposite sex in living quarters.

The sub-committee will meet with student representatives within the next week or two and is expected to make a report and recommendations to the Faculty Committee on Student Affairs by the first half of the term.

The parent committee will then make recommendations to President John A. Hannah and the Board of Trustees.

Protocol Requires Moscow Meeting

MOSCOW (AP)—President Johnson's invitation to the new Kremlin leaders to visit the United States comes at a time when Premier Alexei N. Kosygin is preparing for visits abroad. But no official reaction to Johnson's offer was made public.

The invitation to visit America was reported without comment by the Soviet government newspaper Izvestia. Its account of Johnson's State of the Union address said only that the President "expressed his hope that the new Soviet leaders could visit America together acquainted with it personally."

A U. S. Embassy spokesman said no official invitation had been issued through the Embassy here. He said the Embassy had no knowledge of a formal invitation extended in Washington. The Soviet Embassy in Washington was briefed in advance on Johnson's speech.

Under the normal rules of diplomatic protocol, which are sometimes ignored, Johnson would be expected to visit Moscow first. The Embassy spokesman said that no formal invitation had been issued to Johnson here.

After former Premier Nikita Khrushchev accepted President Dwight D. Eisenhower's invitation to the United States in 1959, the next meeting was expected to be held in Moscow.

But at a Paris meeting in May of 1960, Khrushchev raged over the U2 incident and Eisenhower's proposed trip to the Soviet Union the following summer was called off.

Protocol requires that the next meeting would be held on Soviet soil.

The last was held on neutral soil when the late President John F. Kennedy met Khrushchev in Vienna in 1961.

First word on the prospects of a meeting was not expected here before Ambassador Foy D. Kohler returns Saturday from consultation in Washington.

The Embassy spokesman said it was more likely that the invitation, if there is to be one, would be extended through Soviet Ambassador Anatoly Dobrynin in Washington.

The lack of Soviet official comment did not mean the Russians received Johnson's proposal unfavorably.

Kosygin's acceptance of an invitation to visit Britain, announced by Prime Minister Harold Wilson last month, has not yet been mentioned in the Soviet press. British diplomatic sources said there has been no indication that Communist party boss Leonid I. Brezhnev would accompany Kosygin to London.

An announcement in New Delhi which said Kosygin would visit India this year also has gone unreported here.

Medicare Struggle Revived
WASHINGTON (AP)—A revival--and possible early decision--of the titanic struggle over hospital care for the aged under Social Security took top billing Tuesday in the new 89th Congress.

Backers of the so-called "medicare" bill figured their chances of putting it across this year were excellent in view of the Lyndon B. Johnson landslide.

There was gloom among foes of the administration bill. One said his side lost 38 House votes, Republican and Democratic, in the November election, and thereby lost a "sure majority."

President Johnson, pressing for a big package of measures he said would lead eventually to "the Great Society," is planning to send the first of his special, detailed messages to Congress Thursday.

This will deal with health, and officials said it probably would include a health care plan, the beginning of a "massive attack" on such killer diseases as cancer, heart attacks and strokes, and steps to deal with mental ailments.

Organized "senior citizens" were rallying their lobbying forces for the health care bill. But the American Medical Association, which regards the administration bill as a socialist interference with the doctor-patient relationship, was not giving up its opposition.

In rapid-fire order, Johnson will send to the Capitol next Tuesday his aid-to-education program; two days later his plan for a new immigration law "based on the work a man can do and not where he was born or how he spells his name;" and then, before the inauguration Jan. 20, messages on space and foreign aid.

Responsibility For Students Concern Of Sub-Committee
Increasing shifts in responsibility from the University and parents to students is a major consideration of a five-member sub-committee of the Faculty Committee on Student Affairs set up to study the whole area of off-campus housing.

The group, established at the end of last term, held its first meeting during the Christmas vacation.

Louis F. Hekhuis, director of student activities and committee chairman, said MSU's tremendous growth, which has prompted examination of almost all areas of the University was a major

reason for the establishment of the study group.

"Most schools have been involved in this area for a much longer time than MSU has," he added.

One consideration of the study group concerns a letter which is mailed to parents of all students 21 and over living off-campus advising them of the responsibilities involved.

He emphasized that the letters are not sent to parents of graduate or married students, although a few have been mailed out due to clerical errors or errors on housing cards.

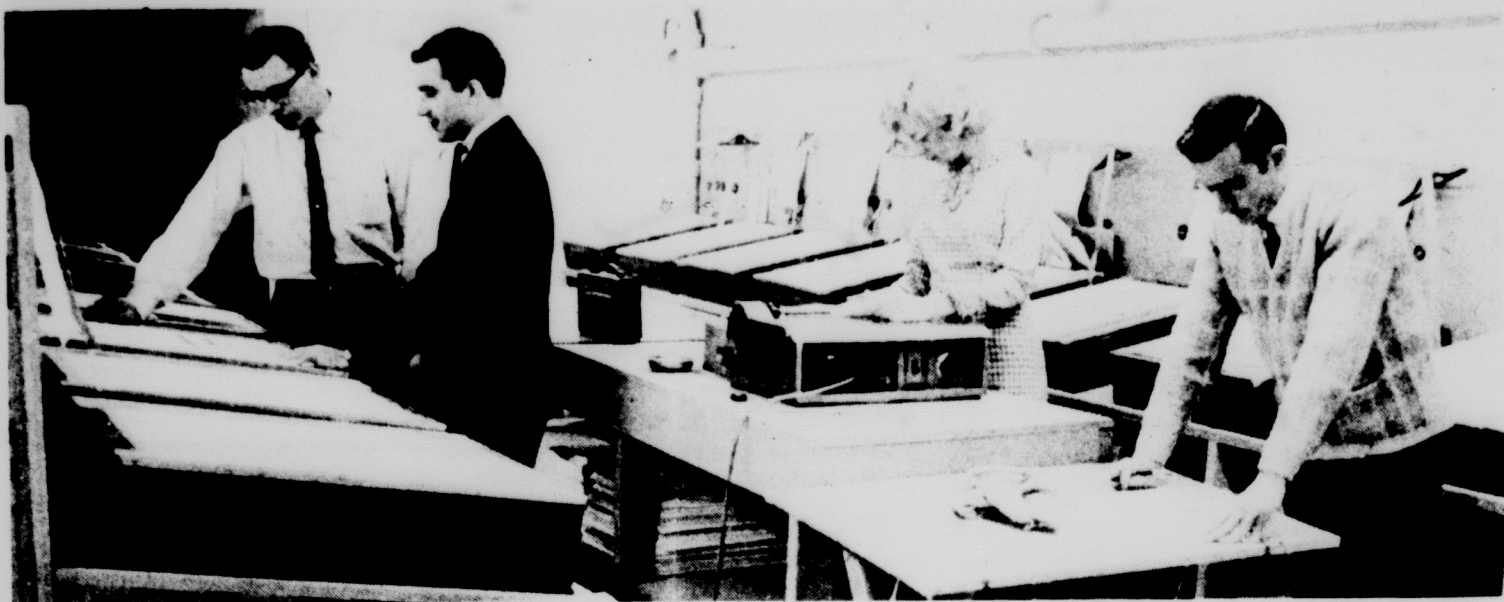
Hekhuis said recommendations by the study group may result in relaxation of some present social regulations governing possession of alcoholic beverages and entertaining members of the opposite sex in living quarters.

The sub-committee will meet with student representatives within the next week or two and is expected to make a report and recommendations to the Faculty Committee on Student Affairs by the first half of the term.

The parent committee will then make recommendations to President John A. Hannah and the Board of Trustees.



NOT TIME -- Stephen M. Sanders, Lambarville junior, is now minus one automobile. His car caught fire Monday night in front of East Akers Hall and was a total loss. Flames from the car were reported shooting 20 feet into the air. Speculation was that a cigarette was accidentally tossed under the car's gas tank, which was suspected of being leaky. --Photo by Mike Wong



COMPOSE YOURSELF -- That's what the employees of Willstaff, Inc., do as they compose the pages for the State News. Willstaff moved from its offices above the Big Ten Barber Shop to a new building on Albert Avenue during Christmas vacation. Here Charles C. Wells, left, State News campus editor,

and editor-in-chief John VanGieson examine a page on one of the light tables as Carolyn Heather of Willstaff prepares copy to be pasted on the page. Wire Editor Hugh J. Leach, right, is shown proofreading copy for this paper.

--Photo by Larry Fritzlan

\$2.6 Million MSU-AEC Project

New Research Lab Approved

A unique \$2.6 million laboratory for large-scale basic research on plants and their reactions to radiation is underway here.

Contracts for construction of the MSU-Atomic Energy Commission Plant Research Laboratory were approved Dec. 17 by the MSU Board of Trustees.

The building will offer highly advanced facilities for MSU botanists, biochemists and scientists from several other fields to explore fundamental life processes.

The project, being carried out through a contract with the AEC, will make Michigan State a national center for research on effects of radiation on plants and on fundamental plants studies in general.

Special facilities in the new building will include underground chambers for regulating growth of plants and exposing them to large doses of ionizing radiation. There will also be two electron microscopes and related equipment in one laboratory. The building will contain separate laboratories for nine professors and associate professors of various disciplines. Each will have a staff of post-doctoral researchers, graduate students and technicians. There will also be facilities for visiting professors. In all, about 90 persons will be involved.

The three-story structure will be built due south of the Biochemistry Building in the Science Complex.

Just west of the building will be a 3,000-square foot greenhouse, connected to the main building by an underground tunnel.

Opening of dormitory, and also

completely underground will be a 4,000-curie, Cobalt 60 radiation chamber, a 300-Kilovolt x-ray chamber, and a 2,500-square foot plant growth chamber.

The radiation chamber will measure 31 by 41 feet and will be shielded by concrete walls up to four feet thick.

The Cobalt 60 source (a highly radioactive form of cobalt) will be located in one corner of the room so that plants can be exposed to widely varying intensities of radiation according to the distance they are located from the source.

When someone enters the

room, the Cobalt 60 source will be automatically enclosed in three tons of lead shielding.

The Cobalt 60 source will provide prolonged exposure to radiation. The x-ray chamber, on the other hand, will enable researchers to expose plants to short periods of intense radiation.

The plant growth chamber will contain facilities for 18 to 20 individual chambers each capable of providing widely varying conditions of light, temperature and humidity.

Lloyd G. Wilson, assistant research professor of botany has

been in charge of overall planning. Radiation planning has been carried out by Leo W. Mericle, professor of botany.

The new laboratory will be directed by Anton Lang, internationally noted director of the Earhart Plant Research Laboratory and professor of biology at the California Institute of Technology. He was scheduled to start at MSU Jan. 1, but was working with the planners earlier.

The building was designed by Kenneth C. Black Associates of Lansing. The general contract has been awarded to Erickson and Lindstrom Co. of Flint.

University Artists Design Medallion

Two University Museum staff artists designed the bronze medallion commemorating Gov. Romney's second inauguration. Dirk Gringhuis, staff artist, and Val Berryman, exhibition technician for the museum, finished the medallion for the inaugural committee in eight days in his East Lansing studio.

"That's a fast pace for a big assignment," Gringhuis said, "but the committee was pressed for time."

Guests at the New Year's Day inauguration ceremonies could purchase the medallions as souvenirs.

The medallion could become a collector's item, said Harold M.

McClure, Jr., general chairman of the inaugural committee.

The front side of the medal shows a profile of the governor, his signature and the date of the inauguration.

On the reverse side is the slogan "Water Winter Wonderland," a map of Michigan, a star symbolizing the state capital, and a superimposed gull.

Working from photographs of the governor, Gringhuis completed sketches for the medal, then turned the sculpturing work over to Berryman.

He prepared four designs for the reverse side before settling on the chosen theme, Gringhuis said.

He discarded designs using a robin, a white pine cone, and the ancient symbols for the four seasons because they seemed too common-place, he said.

Gringhuis has painted a mural for the East Lansing public library and the fort on Mackinac Island.

Considered an authority on Michigan history and folklore, he has written and illustrated 10 children's books, all covering Michigan subjects.

The 24-year-old Berryman is a graduate student in art.



PROVING THEIR MEDAL -- Dirk Gringhuis and Val R. Berryman of the MSU Museum are shown with a clay model of the 1965 Governor's Inaugural medallion, which they designed.

Defense Schools Set

Hometown instructors who will utilize local radiological monitors and fallout shelter managers as part of the state and national civil defense program began schooling in January in four Michigan cities.

Schools provided by the Civil Defense Division of the Michigan State Police, the Office of Civil Defense of the Department of Defense and Michigan State University offer 32 hours of instructor training.

Student Worker Shortage Reports Termed Distorted

Recent publicity on a shortage of student employees at Michigan State has been a distortion of the actual situation, according to Jack D. Shingleton, director of the Placement Bureau.

"Although it is true that there is a shortage of student workers in certain areas, the total picture does not represent any real problem," Shingleton said.

According to recent articles, many jobs are not being filled because "students, their wallets fattened during the economic surge, are snubbing part-time jobs," or because "not enough students are willing to spend a few hours in gainful employment."

Shingleton, however, cited three main reasons for the recent shortage of student employees: The increasing emphasis on high academic achievement has prompted many students to forego working to spend more time on studies.

Families are in a better financial position than they were a few years ago. This means there is less need for students to work their way through school.

A large percentage of students work during vacation periods, especially in the summer.

A problem mentioned in one article was that of finding enough students to operate concession stands at home football games.

Shingleton explained that the first 1964 home game was played before the term began, and that attempts were made to line up student workers for all games before most students were even on campus.

An area currently faced with a shortage of student employees is

that of dormitories and food services, Shingleton said.

Last term only 2,000 of 2,850

hus boy, kitchen worker, custodian and waitress jobs in dormitories and on-campus restaurants were filled.

Work To Start Soon On High-Rise Dorm

Construction will start soon on MSU's tallest building, a \$7 million, 12-story dormitory located on Hagadorn Road, just east of Fee and Akers Halls.

It will be the eighth in a series of MSU's new academic residence halls designed to serve as a "college within a college."

MSU officials said the dormitory complex in which the student lives, attends classes and consults with advisors and professors enables him to identify with a small group and still be a part of a large university.

The dorm will house 609 men and 609 women in separate wings. Each wing will be joined by a two-story structure containing classrooms, faculty offices, a dining hall and laundry.

With all these facilities close at hand, it is possible for a student to attend class, work with a professor, see an art exhibit, attend a play, sleep, eat, study and even have a date without leaving his residence hall.

University officials say that

the new hall will provide an intellectual atmosphere that is unmatched by ordinary dormitories.

The new hall was designed by Ralph R. Calder and Associates of Detroit and will be constructed by the Granger Construction Company of Lansing. It is scheduled for completion in 1966.

Boom Boomed

Dozens of construction workers scattered to avoid being struck by a 130-foot crane boom and job that snapped and crashed down onto the addition to Over Graduate Center Thursday.

A section of the first floor of the east wing addition was torn away by the boom and job when the construction crane tilted in soft fill dirt.

In addition to the boom and job, which weighs more than four tons, a 5,400 pound bucket of concrete fell from the crane. The concrete landed clear of the building.

Granger Construction Company officials estimated the damage to the addition at more than \$5,000.

The cost of the two-wing addition to the Center, which will increase student capacity from 470 to 960, has been estimated at \$2.4 million.

MSU students assisted in the

82 Students Tour Plant

A group of 82 foreign students toured an automotive plant in Flint during the Christmas vacation.

The tour was part of the University's 1964-65 World Understanding, which draws from universities across the country to bring students from 45 different countries here for Christmas vacation.

The 1964 theme of "Adventure" was "The Challenge of Change."

The group also visited the Ketter Foundation and Cultural Center in Flint.

The program was centered in Kellogg Center during its two-week duration.

MSU students assisted in the program.

Green Splash players and future will meet at 6:30 p.m. today in the Women's Intramural building.

The Women's Intramural building pool will be open after 7:30 p.m. Wednesday for those wishing to practice for the Jan. 20 Green Splash event.

OLIN HOSPITAL REPORT

Admissions include Sandra Bobzien, Newfane, N.Y., sophomore; Edgar Glick, Columbia City, Ind., sophomore; Melvin West, Grand Rapids junior; Donald Vansinger, Grand Rapids student; Cary Emerson, Ann Arbor sophomore and Douglas Smith, Utica freshman.

Also admitted were Lester Youker, Bradenton, Fla., sophomore; Robert Arndt, Hazel Park freshman; Dexter Church, Adrian sophomore; Harvey Rose, Oak Park junior; Jan Perreault, Reading, Mass., sophomore; Ronald Kirk, Detroit junior and Maxwell Flood, Montreal, Quebec, graduate student.

Ag Program Discussion Scheduled

Richard M. Swenson, director of resident instruction, will present proposals for revision of the academic program of the College of Agriculture 7:30 p.m. Thursday in 213 Agriculture Hall.

In accordance with the Educational Development Project, agriculture faculty committees have been developing methods to provide better and more efficient education within the college.

Prompted by an expected enrollment of 50,000 students in 1971 to 1972 and a lack of faculty personnel, the project is aimed at concentrating student study programs.

Proposed changes include mass lecture sections, decreased credit-class hour ratios, elimination of overlapping courses, fewer classes with less than 20 students and increased emphasis on broader, less practical, education.

Alpha Zeta, sponsoring organization, welcomes all students, faculty and visitors to this advanced preview.

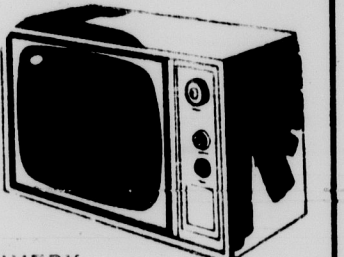
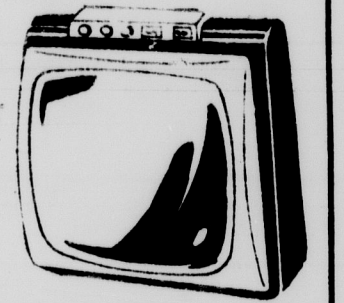
Nejac TV Rentals

NEW 19" Zenith Portables only \$9.00 per month

IV2-0624

Table Models Only \$7.00 & \$8.00 per month

FREE SERVICE AND DELIVERY



Purdue Prints Appel's Article

John J. Appel, professor of social and intellectual history at Michigan State has contributed an essay to "The Celtic Cross: Studies in Irish Culture and Literature," which was published by Purdue University Studies Dec. 30.

The book is a collection of 14 essays on Irish literature, folklore and history, originally presented at the first conference of the American Committee for Irish Studies held at Purdue in 1963. The studies are limited to 19th and 20th Century Ireland, and include the first American colloquy on the poetry of Austin Clarke.

Stock Show Scheduled

Students showing in the Black and Bridle Club Little International Jan. 16 will draw for their individual horses, lambs, heifers or hogs tonight at 7 p.m. at the judging pavilion.

The MSU herdsmen will demonstrate fitting and showing techniques to the novice showmen. Students will groom the University livestock for a week before showing them at the Little International. The Black and Bridle Club will award ribbons and trophies to the winners.

There are still some animals available for anyone interested, according to Tom Smith, Auburn, Ind., senior, chairman of the event.



STATE NEWS

Member Associated Press, United Press International, Inland Daily Press Association, Associated Collegiate Press, Michigan Press Association.

Published every class day throughout fall, winter and spring terms and twice weekly summer term by the students of Michigan State University.

Second class postage paid at East Lansing, Michigan. Editorial and business offices at 341 Student Services Building, Michigan State University, East Lansing, Michigan.

Editor John VanGieson
Advertising Manager Arthur Langer
Campus Editor Charles C. Wells
Managing Editor Liz Hyman
Wire Editor Hugh J. Leach
Sports Editor Richard Schwartz
Ass't. Advertising Manager Ken Hoffman
Photography Advisor Marcy Rosen
Circulation Manager Dave Jaehnig
Night Editor Bill Marshall
Copydesk Advisor Dave Stewart
News Advisor Henry Price
Editorial Editors Richard E. Hansen
Susan Wilson, Michael Kinnaman

CROSSWORD PUZZLE

ACROSS

- Expedition
- Responsive
- Mountain crest
- Cully
- Henry
- Lodge
- Cooked meats
- Old Fr. coin
- Centuries
- Singing bird
- Eclipse
- Esperanto
- Com-munistic
- Steam pipe
- Young rod fish
- Amusement
- The one
- Broad minded
- Gypsy
- Storm
- Fr. island
- Notwith-standing
- Musical instrument
- Blot out
- Pliers
- Softly
- Palm-tree seaport

DOWN

- Sketch
- Puzzle
- Jap. admiral
- Ran out; colloq.
- Dress
- War-torn country
- Herb eye
- Panoramas
- Lure
- Made a point in tennis
- Ethereal salt
- Wand
- Horse's gait
- America
- German measles
- Valuable violin
- Ire
- Stroll
- Pulp fruit
- Milkweed juice
- Severity
- Winged
- Camera's eye
- Miss Gam
- Conger
- Fabulous bird

A	R	A	A	L	A	S	C	O	B
R	I	G	P	O	L	A	O	R	A
C	A	R	T	E	A	G	E	N	C
E	E	L	S	E	L	F			
C	R	E	D	I	T	S	M	E	L
H	O	S	K	E	I	N	R	Y	E
O	U	R	E	R	G	O	T	R	E
P	E	A	R	E	N	D	U	R	E
N	O	W	S	A	L	E			
P	A	C	K	E	T		T	E	M
E	P	I	S	A	M	E	I	O	U
L	A	D	T	I	E	D	T	E	N

STORE HOURS: MONDAY THRU SATURDAY 9:30 A.M. TO 5:30 P.M. - WEDNESDAY NOON UNTIL NINE P.M.

JANUARY sale

FAMOUS MAKER BLOUSES

4 90

Regularly 6.98 to 9.98

Add to your blouse wardrobe now at outstanding savings...white, solid or print tailored and dressmaker blouses in a vast selection of colors and fabrics for immediate and spring wear. Sizes 10 to 18 and 30 to 38.

Sportswear

Jacobson's

World News at a Glance



From Our Wire Services

Favorable Response To LBJ Speech Sought

WASHINGTON-U.S. officials are looking for a favorable Soviet response to President Johnson's invitation to Kremlin leaders to visit America. Johnson might go to Russia, but seems likely to travel first to Western Europe and Latin America.

Administration sources emphasized Tuesday that no specific presidential trips abroad are yet scheduled, nor have specific invitations been solicited or received. This groundwork is to be laid in the weeks ahead.

Shastri Says U.S. Should Seek Solution

NEW DELHI, India-Prime Minister Lal Bahadur Shastri said Tuesday the United States should seek a negotiated solution in South Viet Nam.

In an interview with the Associated Press, Shastri said "a military solution will not be the best solution and a major conflict must be avoided. An effort should be made to hold a Geneva conference in order to find a solution of the various issues involved."

Informed sources say the Indian government believes the United States cannot win against the Viet Cong guerrillas under limited warfare, and an extension of the fighting to Communist North Viet Nam would draw in Red China.

Democratic Majority In Congress Grows

WASHINGTON-Democrats increased their strength on House committees, recognizing the heavy Democratic majority voted in last November's elections.

The result further eases the way of President Johnson's health care and other proposals.

The party ratio in two of the most important committees--Ways and Means and Appropriations--was changed for the first time in many years. Ways and Means, which since 1940 had been made up of 15 members of the majority party and 10 of the minority, will now include 17 majority Democrats and eight minority Republicans. The Appropriations Committee changes from the 30-20 ratio in force since 1951 to 34-16.

Sen. Long Opposes Anti-Filibuster Move

WASHINGTON-Sen. Russell B. Long, D-La., the senate's new majority whip, lined up with his Southern colleagues Tuesday to battle against changing the rules so choking off filibusters would be easier.

The move for a new rule that would permit debate to be limited by a three-fifths majority of senators voting is being spearheaded by Sen. Clinton P. Anderson, D-N.M. He was the senator who placed Long in nomination yesterday for whip, or assistant Democratic leader.

Electoral College System May Be Changed

WASHINGTON-President Johnson apparently intends to ask Congress to eliminate individual presidential electors or else require them to support the candidate in whose behalf they are elected.

Johnson sprang a surprise in his State of the Union speech Monday night when he said:

"I will propose reforms in the Electoral College--leaving undisturbed the vote by states--but making sure no elector can substitute his will for that of the people."

Police Fire On Mob In Karachi Suburb

KARACHI, Pakistan-Police opened fire on a mob in a Karachi suburb Tuesday as rioting continued between supporters of rival political parties in the wake of Pakistan's presidential election.

First reports said two persons were killed and a dozen injured in the shooting at Liaquatabad suburb. Rioters set fire to shops and houses and one double decker bus.

Last night troops were called out in Liaquatabad and two other Karachi suburbs to quell rioting between the rival groups.

Unofficial estimates then said 12 persons had died and 50 were injured.

A dusk to dawn curfew was reimposed in the three areas.

Reaction To LBJ Speech Split On Party Lines

WASHINGTON-Congressional reaction to President Johnson's State of the Union message understandably split along party lines and the views could be summed up like this:

Democrats--inspiring and practical.

Republicans--utopian and costly.

The superlatives naturally came from the Democrats and ranged from "excellent" to "magnificent".

Republicans bore down on the still largely undefined costs of Johnson's program and some called it a something-for-everyone outline that can't be financed if the budget is to be balanced.

Viets Vanish As Counteroffensive Formed

DAT DO, Viet Nam-The Viet Cong vanished from the Binh Gia area again Tuesday as government forces, rebounding from their worst mauling of the war, formed up for a counteroffensive. Patrols hunted vainly for the Red fighters.

"They are like ghosts," complained Brig. Gen. Cao Van Vien, commander of the Vietnamese 3rd Corps. "They disappear when you go after them."

Murph The Surf Accused Of Gabor Robbery

NEW YORK-Jack (Murph the Surf) Murphy, the Florida beach boy charged with stealing the fabulous Star of India sapphire, was accused in court Tuesday of pistol-whip robbery of actress Eva Gabor a year ago.

Accused with the 27-year-old Murphy was Allen Dale Kuhn, 26, also an alleged cohort in the burglary of the Museum of Natural History which yielded the Star of India and other gems worth a total of \$410,000.

As charges continued to pile up here and in Miami against Murphy and his fellow aquatic acrobats, a judge doubled his bail to \$100,000.

S. B. S.

Your Used Book Headquarters

Has

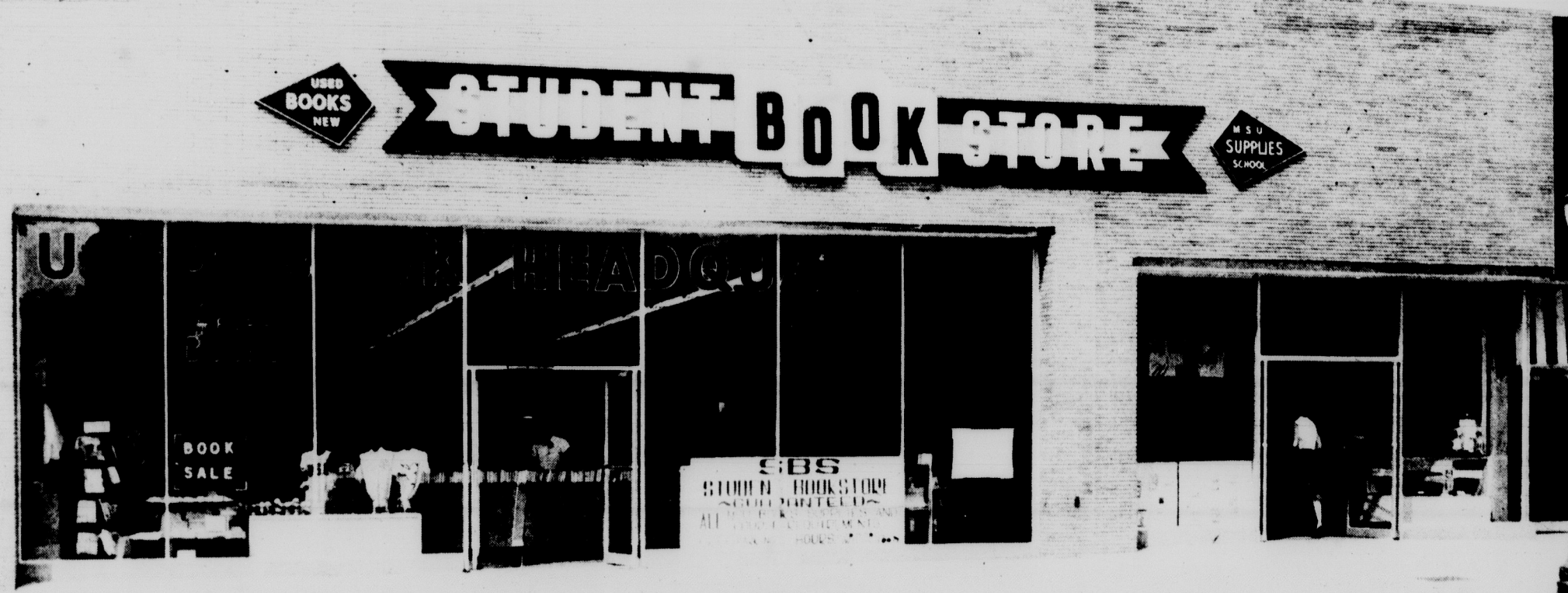
Free Book Lists For All Courses,
Stop In And Pick

Yours Up
Today

Plenty Of
Good
Used Books
Left

Full Line Of Art
& Engineering Supplies
Large Selection
Of Paperbacks

Student Supplies
Everything For
YOU
The Student



S. B. S.

TUDENT BOOK STORE

Free Parking In Large Lot At Rear - 421-25 E. Grand River - Across From Berkey Hall

Goodwin's

Across from the State Theater

Fabrics

KNITTERS SPECIAL!

Manufactures Overrun!

100 % VIRGIN WOOL

BULKY YARN

2000 SKEINS

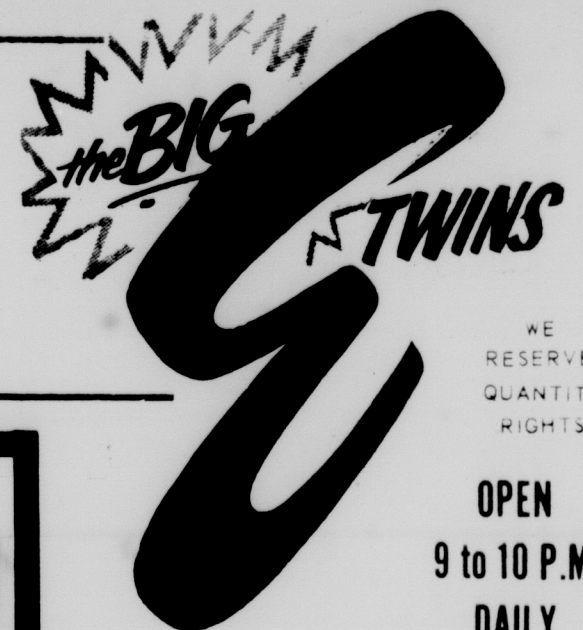
Choose from 5 colors
Brown Mix, Dk. Grey
Beige Mix, Natural
White

79¢

4 oz. Skein

FOOD COMES FIRST

IN LANSING AT
SHOPPERS FAIR
3301 E. MICHIGAN AVE.
NEXT DOOR TO FRANDOR
AND AT
TOPPS DISCOUNT CITY
921 WEST HOLMES ROAD
CORNER OF S. LOGAN



WE RESERVE
QUANTITY
RIGHTS

OPEN
9 to 10 P.M.
DAILY
CLOSED SUNDAYS
AS USUAL

Claims! Claims! Claims!

Every food supermarket claims lowest food prices! We know Big "E" food prices are the lowest in town!

You can prove it to yourself by comparing Big "E" prices with those you have been paying elsewhere. Shop and save at the Big "E" all 52 weeks during 1965 for total savings that really count!

Here Are Just A Few Of The
Low Prices In Every Dept!
Compare! See For Yourself!

COUNTRY FRESH SKIMMED MILK	Half Gal.	25¢
Kraft's VELVEETA	2 lb. Loaf	89¢
8 Delicious Varieties Frozen BANQUET DINNERS	Each	39¢
Pet Ritz Frozen Apple or CHERRY PIES	Each	29¢
Dixie Belle SALTINES	1-lb. Box	19¢
Eberhard's Hawaiian PINEAPPLE JUICE	1-qt. 14-oz. Can	25¢
Eberhard's Crushed SLICED PINEAPPLE	1-lb. 4-oz. Can	25¢
Plymouth Red GRAPEFRUIT JUICE	1-lb. 14-oz. Can	29¢
Big "E" GRAPE JAM	2 lb. Jar	39¢
Maxwell House COFFEE Reg. or Drip	2 lb. Can	149¢
Pet or Carnation CANNED MILK	Tall Can	14¢
All Flavors SEGO DIET DRINK	10-oz. Can	25¢
Gold Medal, Robinhood or PILLSBURY FLOUR	5-lb. Bag	49¢
Quick QUAKER OATMEAL	42-oz. Size	39¢
Three Little Kittens CAT FOOD	3 15-oz. Can Pak	19¢

Polly Anna Cracked Wheat BREAD or 1 Doz. Donuts Your Choice	19¢
---	-----

Whip 'N Chill Van., Choc., Strawberry Lemon JELL-O 3 3/4-oz. pkg.	21¢
---	-----



Reg. or Liver Vet's
Dog Food
1-lb. Can

8¢

AT THE BIG "E" IN '65

BIG "E" MONEY SAVOR ROUND STEAKS 64¢	BIG "E" MONEY SAVOR SIRLOIN STEAKS 74¢
Swift's Premium Proten Round Steak lb.	Swift's Premium Proten Sirloin Steak lb.
76¢	86¢

Grade No. 1 SKINLESS FRANKS 2 1/2 lbs.	Fresh, Ground LEAN HAMBURG lb.	Lean, Meaty SPARE RIBS lb.
99¢	39¢	38¢

3 to 4-lb. Average WHOLE BEEF TENDERLOINS lb.
89¢

Big "E" Money Savor T-BONE STEAKS lb.	89¢
Swift's Premium Proten T-BONE STEAKS lb.	99¢

SAVE 10c—Country Fresh ICE MILK Half Gal.	39¢
---	------------

COUPON SPECIAL! April Hill Frozen Bread Dough 3 Loaf Pak	38¢
--	------------

SAVE 10c—Royal Scott Margarine 4 1-lb. pkgs.	66¢
--	------------

SAVE 16c—Family Fare CHEESE LOAF 2-lb. Loaf	39¢
All Varieties Banquet FROZ. POT PIES 8-oz. pkg.	15¢



3 lb. Can **47¢**

PURE SHORTENING

Swift's

6 1/4-oz. Can
Eberhard's Chunk Style
TUNA 22¢

Swift's Tru-Tendered Sliced BEEF LIVER lb.	38¢
Swift's Premium SLICED BACON lb.	59¢
Farmer Peet's RING BOLOGNA lb.	48¢
Herrud's All Beef SKINLESS FRANKS lb.	59¢
Smoked PORK CHOPS Center Cuts lb.	69¢
Hygrade Roll PORK SAUSAGE 3 lbs.	100¢

COUPON SPECIAL! SAVE 14c SNOWY WHITE BLEACH Gal.	19¢ with Coupon
---	------------------------

EBERHARD'S WHITE Facial Tissues 400-ct. pkg.	15¢
--	------------

FANCY SALAD TOMATOES 5 TRAY OF ONLY	10¢
U.S. NO. 1 MICHIGAN SANDGROWN POTATOES 20-lb. Bag	99¢
CUCUMBERS Each 10c RADISHES 10c GREEN ONIONS bu. 10c GREEN PEPPERS ea. 10c	

BIG "E" SPECIAL COUPON April Hill Frozen BREAD DOUGH 3 Loaf Pak	38¢
WITH COUPON AND \$5 FOOD PURCHASE Coupon Good thru Sat., Jan. 9	

BIG "E" SPECIAL COUPON Save 16c—Family Fare CHEESE LOAF 2 lb. Loaf	39¢
WITH COUPON AND \$5 FOOD PURCHASE Coupon Good thru Sat., Jan. 9	

BIG "E" SPECIAL COUPON Save 14c—Snowy White BLEACH Gal.	19¢
WITH COUPON AND \$5 FOOD PURCHASE Coupon Good thru Sat., Jan. 9	

Obituaries

Philip J. Clark

Philip J. Clark, professor of zoology, was killed Dec. 24 when he was struck by a pickup truck in a hit-and-run accident on Abbott Road.

Mr. Clark, 44, of 6074 Abbott Road, was walking north on the shoulder, heading home from his campus office, when struck.

Edward E. Damer, 53, of 6776 Angle Road, Bath, was arrested later that evening and charged with manslaughter in connection with Mr. Clark's death.

Damer furnished \$2,500 bond and was released. He will be tried Jan. 18.

Ingham County Coroner Dorwin Hoffmeyer pronounced Mr. Clark dead of internal injuries at the scene of the accident.

Charles S. Thorton, chairman of the Zoology Department, said the victim of the Christmas Eve accident was an expert on biological statistics and had done promising research work.

A member of the MSU faculty for the past eight years, Mr. Clark was an active researcher in population genetics and population ecology. His research included extensive studies on relationships among physical characteristics, fertility and intelligence.

Born Jan. 28, 1920, at Takoma Park, Md., Mr. Clark received his B.S. degree in 1948, his M.A. in 1950 and his Ph.D. in 1953. All were from the University of Michigan.

Before coming to MSU as an assistant professor in 1957, he had been a junior biologist at the Institute of Human Biology, University of Michigan, from 1952-55, a post-doctoral fellow in statistics at the University of Chicago, in 1955-56 and an assistant professor in zoology at the University of Oklahoma, in 1956-57.

He was promoted to professor July 1, 1957. From Sept. 1, 1963, until Aug. 31, 1964, he was on leave to study and write at the University of North Carolina under a National Science Foundation grant.

He is survived by his wife Deborah, three daughters: Katherine, who is in the Peace Corps in Nigeria; Edith, a student at MSU; and Judith; his mother, Mrs. Ellen Lethin Clark of South Haven; six brothers and two sisters.

Funeral services were held Dec. 28 in the MSU Alumni Memorial Chapel. Interment was at Plummer Cemetery, Glenn.

Mrs. Catherine Miller

Mrs. Catherine Miller, 45, wife of Paul Miller, a former provost of MSU, died last Wednesday.

Mrs. Miller had been hospitalized for a kidney ailment, and died of a massive cerebral hemorrhage.

Her husband resigned his post as provost Feb. 1, 1962, to take his present position as president of the University of West Virginia.

Miller joined MSU as a graduate research assistant in sociology and anthropology in September of 1946, became an assistant professor the following June, director of the Cooperative Extension Service in 1955, and provost on June 1, 1959.

Surviving Mrs. Miller, who was born at Oxford, W. Va., are her husband, a daughter, Paula

K., 19, a sophomore at the University of West Virginia; a son, Thomas, 9, of the home; and her mother, Mrs. Gay Zinn Spiker, Pennsboro, W. Va.

Mrs. Janet S. Scott

A speeding Chesapeake and Ohio passenger train struck and killed an MSU graduate student as she attempted to cross the tracks on Farm Lane Dec. 14.

Officers said Mrs. Janet S. Scott, 46, of 4316 Christiansen Road, Lansing, walked under lowered gates at the crossing and attempted to beat the train across the tracks. Flashers and bells were working, they said.

Mrs. Scott, who was doing graduate work in nursing at MSU, attended the University of Michigan and graduated from Alma College in 1940.

Her daughter, Coralee, was struck and killed by an auto Jan. 8, 1963, police said.

Surviving Mrs. Scott are her husband, Dwayne, a Michigan Conservation Department surveyor; three sons, Ira D., 14-15-J Spartan Village, an MSU police administration student, and Randolph H. and Thomas M., both of the home; a daughter, Penelope L., at home; a brother, Ira Simmons, Hubbard Lake, and a sister, Mrs. Patricia Kensinger, Alpena.

Services were held at Gorsline - Runciman Funeral Home Dec. 17, with burial in Deepdale Cemetery.

Mrs. Katherine A. Towne

Mrs. Katherine A. Towne, 70, of 525 Butterfield Drive, East Lansing, wife of Jackson E. Towne, librarian emeritus of MSU, died Thursday in a local hospital.

Mrs. Towne was a member of St. Thomas Aquinas Church, past president of the Faculty Folk Club, a member of the East Lansing Garden Club, the East Lansing Woman's Club, the Lansing Y and I Club, and several other organizations.

She was once head of the periodical department of the University of Illinois Library.

The Townes have lived in East Lansing for 30 years, moving here from Urbana, Ill.

Mrs. Towne is survived by her husband, a sister, Miss Irene M. Doyle of Madison, Wis., and a brother, William J. Doyle of Decatur, Ill.

Funeral services were held at St. Thomas Aquinas Church Saturday, with burial at Woodlawn Cemetery, Clinton, Ill.

Those wishing to do so may contribute to the Library Memorial Fund in care of Friends of the Library, Michigan State.



T. S. ELIOT

T. S. Eliot Dies At 76 In London

LONDON, P-T. S. Eliot, American-born poet, playwright and a voice of the "Lost Generation" of the 1920s, died Monday night in London. He was 76.

Born in St. Louis, Mo., of a family that had been New Englanders since the 17th century, Eliot spent most of his adult life in Britain and became a British subject in 1927. He won the Nobel Prize for literature in 1948.

His poem "The Waste Land" caught the imagination of the disillusioned generation that survived World War I. It became a classic description of the mood of misery and pessimism of the intellectuals of that time.

Another of his famous poems, "The Hollow Men," contained the lines "This is the way the world ends ... Not with a bang but a whimper," memorized by legions of college students.

His two most successful plays were "Murder in the Cathedral," a dramatization of the murder of Archbishop Thomas Becket in Canterbury Cathedral and "The Cocktail Party," the story of a psychiatrist who helped people find peace of mind.

Although he celebrated the loneliness of modern man in his poetry, Eliot's critical essays in his later years were more and more concerned with problems of Christianity. He was an outspoken member of the Church of England and one of its leading defenders.

Eliot graduated from Harvard University in the same class with Walter Lippman, Heywood Brown, John Reed and Stuart Chase. He studied at the Sorbonne in Paris, and at the start of World War I, Eliot went to London. Thereafter, England was his home.

Senator Hart Urges World 'Rule Of Law'

A family of nations that observes the rule of law rather than the rule of force is the only solution that will bring world peace, U.S. Sen. Philip A. Hart told 11,000 graduates Dec. 18 in the Auditorium.

The way to world peace will be long, Hart said. More disarmament treaties, more trade and a possible joint space effort will come first.

"But thoughts of peace, international tension and tranquillity are going to be your nagging companions for many years after you leave this campus," Hart warned.

However, Hart said considerable progress has already been made.

"The H-bomb, I feel, is certainly helping to hasten the world toward maturity."

Even though world order is beyond this generation's lifetime, Hart said America must present a show window displaying what he described as the greatest

single moral force on our side, freedom.

Hart said world organization must allow people to protest, to dissent and to offer new ideas.

"Yet there are some in the Western world who discourage dissent," he said. "They say unity is what we need. The only strength is unity."

"I hope you will examine that argument carefully and reject it."

World rule is far away now, Hart said, but the test ban treaty shows that two antagonistic nations can find areas of agreement.

Also speaking to the graduates, President John Hannah said the federal government is becoming more important to higher education through federal aid programs.

He said the December graduating class brought to 75,000 the number of MSU graduates since the University was founded in 1855.

KRESGE'S

YOUR ADLER HOSE HEADQUARTERS

Shrink Controlled

S.C.

\$1.00

per pair

Knee Hi

IVY

\$2.00

per pair

Quality Favorite

ASPEN

\$1.25

per pair

Delicious Chocolate Covered

Cherries

10 oz. box

43¢

WITH THIS COUPON

Across From the Union

Knapp's

JANUARY

Sales Events



Barry corduroy cushions

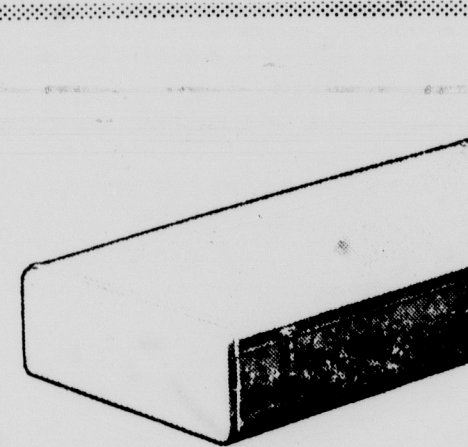
Reversible corduroy chair cushions with urethane foam fill, and cotton tie tapes. Neatly tufted on the square. Ideal for dining or kitchen chairs. Turquoise, red, green, brown or avocado.

1⁵⁹
2 for \$3

jumbo plastic dress bag

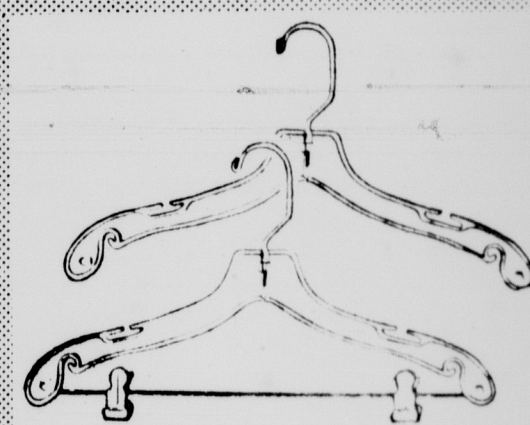
Sturdy heavy gauge plastic, fully tailored with quilted top and front. 3-hook frame with drop bar for hanging ease. Full length, zippered. Holds 14 to 16 garments. Choice of turquoise, pink, green or toast.

2 for \$5



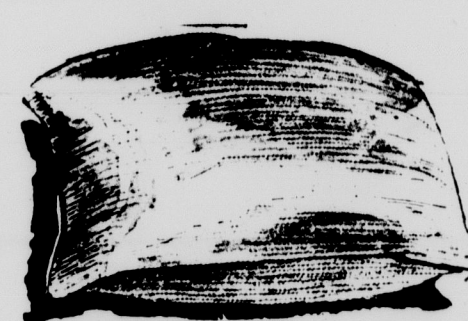
Nash all steel underbed chests
7.99

Large size, 48"x18"x6" on easy-rolling casters. Coated interior for added protection. Lock and key. Bronzefine finish.



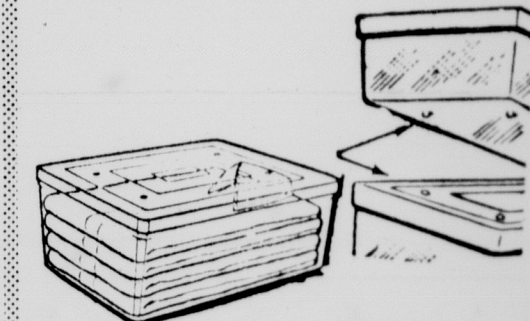
8 plastic dress or 4 suit hangers
88¢

Contoured neckline and shoulder, holds garments in wrinkle-free order. Revolving metal clips. Set of 8 dress hangers or 4 suit hangers.



corduroy bed pillow converters
1.49

Tailored full size covers to zip on over regular bed pillows. Red, gold, brown, avocado and turquoise. Save on 3 for \$4.



store and stack see-thru plastic boxes

Three convenient sizes to aid in closet organization. Ideal storage for small items. Strong clear plastic, grooved for stacking.

Shoe size . . . 4 for 1.88
Utility size . . 2 for 1.88
Super Stor-all . 2 for 3.00

KNAPP'S DOWNTOWN
5TH FLOOR AUDITORIUM

NOTIONS-EAST LANSING-SECOND LEVEL



You May Be Frozen
Our Pizza isn't . . .
But Our Price Is
Still Only

96¢
RICARDO'S

12" Pizza
one item
plus tax
and delivery

FOR DELIVERY
CALL

482-1554

482-1555

ABC Auto Parts

Discount Prices

GENERATORS and starters. Rebuilt 6 or 12-volt. Guaranteed!

Exchange price . . . 7.90

VOLTAGE REGULATORS

Rebuilt. exchange price . . . 2.26

REBUILT SHOCKS

guaranteed 15,000 miles or 1 year. each . . . 3.33

NEW MUFFLERS

as low as . . . 1.99

NEW BATTERIES

exchange price, as low as . . . 7.95

NEW SEALED BEAMS

.99

SALVAGE CARS

Large stock used parts.

MECHANIC on the job! Installation service available.

ABC AUTO PARTS

3 Blocks East of Grand Trunk

613 E. South St. IV-5-1921

Spartan Swimmers Meet Bowling Green Tonight

By DUANE LANCASTER
State News Sports Writer

Confidence and optimism are evident whenever MSU's swimming coach, Charles McCaffree, talks about his team and the upcoming season.

"We are more experienced and should have greater depth than a year ago," McCaffree said. State finished with a 6-2 mark last season.

"We have several outstanding performers and reasonable strength in every event. The boys are all working very hard and we should move back among the top 10 teams in the nation."

The swimmers enter their first dual meet of the season tonight against Bowling Green in what can be called a warm-up for the Big Ten Relays in Ann Arbor Saturday.

Students will be required to show I.D. cards for admission to the 7 p.m. event at the Men's Intramural Pool.

McCaffree said he is expecting little trouble from the Ohio school which finished fourth in the Mid-American conference last season. "We're ready," he said.

It's been a long time since the Michigan Collegiate Meet early last month but McCaffree's swimmers will not be suffering from inactivity. They have held strenuous workouts over the holidays, swimming five to seven hours a day and taking only four days off in the past two weeks. McCaffree estimated the workouts lasted about 5 1/2 hours.

Topping the youthful 18-man squad, which has only two sen-

iors, are captain Dick Gretzinger, a two-time All-American, and Olympic star Gary Dille. Gretzinger swims the butterfly, individual medley and freestyle equally well and Dille placed second in the Olympic 200-meter backstroke.

Jim Macmillan, a 100-yard freestyle specialist, is also an All-American and was named the outstanding member of last year's team as a sophomore.

Terry Hagan, a junior, is back to defend his number-one ranking in the butterfly but will have to ward off sophomores Danny Harner and John Ladd to keep his spot.

Perhaps the biggest reason for McCaffree's optimism, however, is the return of the Spartans' 400-yard freestyle team which captured first place in the Big Ten championships last winter. The relay squad is composed of Macmillan, Darryle Kifer, Gretzinger and Bob Sherwood. The team earned All-American honors in the event last year.

The Spartans, who finished with a 6-2 mark last year, swim against their first conference foe Jan. 16 in Iowa to begin a league schedule which includes every Big Ten team except Indiana.

UFL Cites Former Spartans

Four former Michigan State football players were recently named to the United Football League All-Star Team for 1964.

Bill Zorn, a Spartan letterman in 1962, captured a tackle spot on the offensive team, while Roger Lopes, who finished his college career in 1963, got the fullback nod.

Zorn plays for the Grand Rap-

ids Glaziers and Lopes is with the Indianapolis Colts.

Dan Underwood and Dewey Lincoln, both of whom played last at State in 1963 and are now teammates of Lopes' at Indianapolis, were named to the defensive team.

Lincoln was honored for his safety work and Underwood was recognized at both linebacker and cornerback.

Four Home Events Top Week's Sports Slate

Michigan State and Iowa will battle it out in wrestling and basketball this week to highlight the start of the 1965 Spartan athletic year.

The cagers will kick off the Big Ten season by taking on the Hawkeyes in a Saturday afternoon clash at Jenison Fieldhouse.

The Spartan wrestlers will face Iowa that night also at home, in their second Big Ten outing. They tied Indiana earlier in the season.

Michigan State's hockey team begins its quest for Western Collegiate Hockey Association honors by taking on Minnesota Friday and Saturday in Minneapolis.

State swimmers will be in action twice, playing host to Bowling Green tonight and tasting Big Ten competition for the first time in the Big Ten Relays Saturday in Ann Arbor.

The frosh-varsity gymnastics meet, also Saturday, will serve as the final tune-up before the beginning of Big Ten action against Iowa Jan. 16.

The NEWS In

SPORTS

Name 3 'S' Booters To All-America Team

Three Michigan State soccer players were named to the 1964 All-America team by the National Soccer Coaches Association. Only 11 other state soccer players have earned this distinction in the past.

Payton Fuller, junior from Kingston, Jamaica, was awarded a first-team berth at outside left. George Jones, junior from Detroit, earned a second-team position at inside right, while Capt. Louis Eckhardt, senior from Port Chester, N.Y., was placed on the third team at left halfback.

All played important roles on MSU's most successful team in history. The Spartans closed the season with a 10-1-1 record, having advanced to the NCAA finals before losing a close 1-0 contest to Navy.

Deadlines Set

Entries are being accepted today for residence hall intramural basketball and bowling. There will be a meeting tonight for residence hall managers of basketball and bowling at 7 in 208 Men's (M- and Independent and fraternity managers' meeting for basketball and volleyball at 8.

Cagers Emerge From Fog

Anderson Sets Sights On Iowa

By JERRY MORTON
State News Sports Writer

Coach Fordey Anderson is ready for the Iowa Hawkeyes, and he's working hard this week to make certain that his team will be, too.

"I'm really keyed for this one," Anderson said. "In fact, I've already lost a night's sleep over it."

"This is one game I really want to win," he said. "I only hope the boys do too."

Saturday's game will be a big one for the Spartans featuring a new year, a new line-up, and practically a new season.

After winning four of nine non-conference games in 1964, the Green and White will begin Big Ten play in a league that Anderson feels is even stronger now than he had anticipated before the season began.

"Before things started, I counted on Michigan, Illinois, Minnesota, Purdue and Northwestern as being real strong teams," he said. "Now I'd have to add Indiana and Iowa along with them."

The Hawkeyes gained attention in the Los Angeles Classic with a 70-74 win over Minnesota for third place.

MSU placed seventh in the same tournament with losses to Utah, 98-96, and Southern California, 100-69, and a win against Washington, 93-92.

Sophomore guard Joe Johnson injured his knee against Utah, and it's unlikely that he's ready to crack the starting line-up again. Ted Gray will start at guard, but Johnson should still see some action against the Hawkeyes.

The Spartan offense has been averaging 80.0 points a game but Anderson said he thinks MSU's biggest problem is still an offensive one.

"Our main weakness still has to do with turnovers," he said.



TWO FOR JOE -- Joe Johnson leaps high to score two points against Loyola (La.) in a 94-70 Spartan victory. A knee injury against Utah in the Los Angeles Classic makes Johnson a doubtful starter against Iowa Saturday. --Photo by Gary Shumaker.

"We've given the ball away too many times." Stan Washington still leads Spartan scorers with 195 points in nine games for a 21.6 average.

He's followed by Bill Curtis (18.6), Marcus Sanders (14.4), Joe Johnson (12.8), Ted Gray (8.3), John Shick (6.5) and Bob Miller (6.0).

State Defense Sags In Holiday Ice Set

By LARRY MOGG
State News Sports Writer

MSU's hockey team ended a 19-day layoff with a holiday

tournament date in Providence, R.I., on Jan. 1 and 2, and the Spartans showed all the effects of a New Year's Eve "hangover."

Coach Amo Bessone's squad came out on the short end of 6-2 and 6-5 decisions to hometowners Brown and Providence in the Brown University Holiday Tournament. Brown ultimately won the four-team tourney by tripping Colorado College 6-5 in an overtime championship final.

The Spartans entered the tournament bout skating high, wide and handsome with a 6-1 season mark before being decked by the eastern twosome.

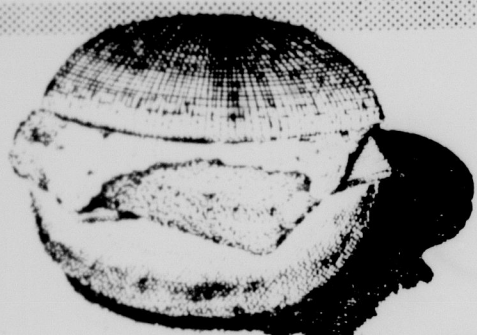
Bessone had labeled his defense as the big question mark before the games, but the Spartan boss came away with the answer:

His defensive forces still need more work.

"Both games added up to prove my fears about our defensive capabilities," said Bessone. "Brown and Providence skated real well and gave our defense lots of trouble."

As in previous games, Bessone was more than pleased with his offensive unit. "When and if our defense catches up to our offense, we'll be much better off," Bessone said, looking ahead to the upcoming conference schedule. The Spartans begin league play this weekend with a two-game set at Minnesota.

Injuries were held to a minimum during the trip. Defenseman Don Heaphy was bothered by a pinched shoulder muscle throughout the series. He played despite it and is expected to be in good shape for the Minnesota trip.



Let's go to McDonald's FOR A NEW TASTE TREAT McDonald's Filet-O-Fish

Crisp, golden Filet-O-Fish served piping hot on a plump, toasted bun with plenty of tangy tartar sauce to give you a real deep sea treat you'll love.

Look for the Golden Arches™

SOUTH LANSING— 4700 S. Cedar EAST LANSING— 234 W. Grand River EAST LANSING— 1024 E. Grand River

NORTH LANSING— 2120 N. Larch WEST LANSING— 4015 W. Saginaw

NAT. SCI. ATL. SOC. AND HUM.

BASIC OUTLINES

- Brand New
- Completely Up To Date
- Follows Course Material Exactly

Available At

Campus Music Shop

Across From The Union



it's smart to be square

in the proper circles



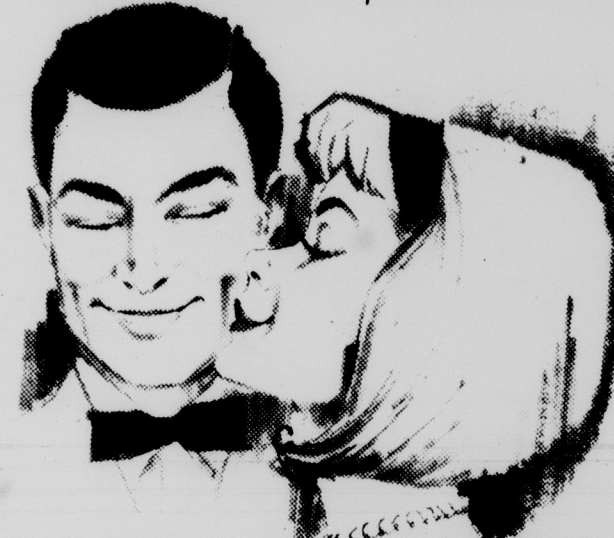
Wallace eyewear has a flair for attracting attention. These two styles are patterned after the design made so popular this summer with sunglasses. They're now available for all-around wear, at either Wallace location.

eye examinations by DR. W. C. JENSEN, registered optometrist

WALLACE OPTICIANS

3040 Vine (Opposite Frandor) Phone IV 9-2774 also offices downtown at 107 N. Washington. Dr. R.C. Jones and Dr. B.C. Bussard, registered optometrists

For That Extra-Special Ending To That Extra-Special Date



enjoy the candlelight dining of

ITALIAN VILLAGE

PIZZA AT ITS BEST

1101 E. Michigan Ave.

IV 2-2100



Get Rid Of Spots At

Louis

CLEANER AND SHIRT LAUNDRY

623 E. Grand River ED 2-3537 Across From Student Services Building.



WEDNESDAY'S 49¢ DAY

Dig into as many golden buttermilk pancakes as you can eat for just...

49¢

Now serving a complete line of meals and sandwiches

2820 E. Grand River IV 7-3761

Hours: Sun.-Thurs. 6 AM-12 Friday-Saturday 24 Hrs.

SPARTAN Bookstore

CORNER ANN & M.A.C.

[illegible]

Hours:
rs. 6 AM-12
aturday 24 Hrs.

[illegible]

MSU CONCERT SERIES Student Ticket Release Dates

January 11-15

Student Choices And Coupons

Coupon A-
Coupon B-
Coupon C-
Coupon D-

"Luther," Jan. 21; or "Beyond the Fringe," Jan. 26

Marian Anderson, Feb. 16; or Royal Welsh Male Choir, Feb. 19

Fred Waring, Feb. 22 or Feb. 23

Lewis & Madeira, Mar. 9

PROCEDURE

1. Take coupon book to Union Ticket Office.
2. Select concerts desired for the term and exchange the appropriate coupon plus 50¢ for each reserved seat ticket.
3. One person can present a maximum of four student coupon books for tickets to one program.
4. A validated ID card, plus a reserved ticket stub is necessary for admittance to the auditorium.

ASIAN - LATIN AMERICAN - AFRICAN SERIES

CORO DO BRASIL, Jan. 20 - University Auditorium
Students, \$2.00; Public, \$2.50

MANUEL LOPEZ RAMOS, Feb. 9 - Fairchild Theatre
Students, \$1.50; Public, \$2.00
- UNION TICKET OFFICE

International Film Series

(Formerly Foreign Film Series)

Seven Great Films - Only \$2.50 - Winter Quarter
Union Ticket Office
Open 8:00 AM - 5:00 PM, Mon. through Fri.

Caron, Kelly To Star In Film Series Opener

The Oscar-winning Gershwin musical, "An American in Paris," opens the winter term International Film Series at 7 p.m. Thursday and Friday in Fairchild Theater.

Leslie Caron and Gene Kelly dance and sing through a technicolor production that includes

12 Gershwin songs and a ballet done in nine different scenes, each in the decor of a celebrated French painter.

Alan Jay Lerner, of "Gigi" and "Camelot" fame, wrote the story and screenplay.

His ex-GI, Jerry Mulligan, remains in Paris after the war to live the precarious existence of an unknown painter on the Left Bank.

While being pursued by the rich American girl who sponsors him, Mulligan falls in love with a French salesgirl already betrothed to a famous singer.

Lewis Named TV Manager

Colby Lewis, professor of television and radio and coordinator of closed circuit television at Michigan State has been designated manager of television broadcasting for MSU.

The appointment was effective Jan. 1. Lewis has been serving as acting manager since July, 1964.

His new assignment will involve administrative responsibility for the operations of Michigan State's Channel 10 station WMSB. He will retain his present academic responsibilities for radio and television education here.

A native of New Hampshire, he earned his academic degrees in the dramatic arts from Cornell University.

Before joining Michigan State in 1957, he was production manager for Chicago educational television station WTTW, and assistant program manager for WTMJ-TV, Milwaukee.

Lewis has also served as head of dramatics for Rhode Island State University; instructor in speech and dramatics at Mills College, California; and technical director of the Cornell University Theatre.



PROPHECY OF FUTURE? -- The snow on the day of Gov. Romney's inauguration could indicate tough sledding ahead. With a Democratic-controlled legislature, Romney programs could be snowed under. --Photo by Tony Ferrante

Money For Research

MSU Accepts Stipends

An extensive communications research program at MSU received a \$1,535,371 boost with the award of four research grants.

The grants were accepted Dec. 17 by the Board of Trustees.

The largest grant, \$1,236,357 from the Agency for International Development, will support a four-year study of communication's role in "Diffusion of Innovation in Rural Societies."

The study will involve the establishing and staffing of rural communications research centers in Latin America, Africa and Asia.

The project is under the direction of Everett M. Rogers, associate professor of communication.

AID also granted \$136,224 for continuance of the seminars in communications conducted by MSU.

More than 190 week-long seminars have been carried out since the program began in 1958. Participants have included more than 8,500 foreign students from universities throughout the country and also foreign visitors who have come to the U.S. for special

training with industries, corporations and governmental agencies.

The seminars, conducted at Cacapon, Va., are directed toward assisting the visitors in the effective use of their U.S. training. Erwin P. Bettinghaus, associate professor of communication, is coordinator of the project.

A \$37,880 AID grant to study major communications research directions and dimensions has been awarded to David K. Berlo, associate professor and chairman of Department of Communication.

Berlo will direct a symposium of some 30 communications specialists in an interuniversity, interdisciplinary study of communications research as it relates to development.

A \$124,910 grant from the U.S. Office of Civil Defense is another communications project under Berlo's direction.

The civil defense project concerns an evaluation of current civil defense information programs.

Studies being done in the project include the influence of fear-producing messages and the effect of civil defense messages from various sources.

Moppets Highlight WMSB New Year

A chat with British moppets, music by the Cincinnati Symphony Orchestra and previews of Mariner III, Red China and the 89th Congress open a new year of broadcasting on the MSU campus this week.

WMSB, the University's radio and television station, shares its channel with WILX, a commercial station in Jackson.

The British moppets, a group of 7-year-old youngsters, will comment on Britain's political and social system today at noon on the "Seven Up" program.

Max Rudolf will conduct the Cincinnati Symphony Orchestra at 11:30 a.m. Friday in a performance of works by Gutche, Nelhybel and Tchaikovsky.

This show is part of a musical

series concluding at 6:30 p.m. Sunday with a performance of Sibelius' Symphony No. 2 by the Royal Philharmonic Orchestra of London.

Pianist Barb Nissman, University of Michigan undergraduate, will perform Schubert's "Wanderer Fantasy" and Liszt's "Etude de Concert" on the "Recital Hall" tonight at 7 p.m.

"Spectrum" reports Friday at 6 p.m. on the Mariner III Mars vehicle and its successor, the Multivator, a machine designed to test the Martian terrain for life similar to that on the earth when it lands on the planet in 1969.

On "The 700 Million" show at 4:30 p.m. Sunday, WMSB will trace the changes in Red China which reportedly produce nationalistic citizens.

WMSB also previews at 1 p.m. Sunday the major issues expected to come before the 89th Congress this year.

Also scheduled for the new year are additional hours on WMSB devoted to educational broadcasting. The new hours are effective Sunday.

SAVE ON CLASS NEEDS

COMPLETE
STOCK
OF ALL
TEXTBOOKS

BUY
USED BOOKS
SAVE
25%

• PAPERBACKS

Recommended and
Required

• REFERENCE BOOKS

For Every Course

If We Don't Have It, We'll

Special Order It At No

Extra Cost.

- Notebooks
- Bluebooks
- Supplies

You'll Find
Fair Prices
and
Friendly Service
PERSONALIZED

GIBSON'S

BOOKSTORE

ON GRAND RIVER-ONE BLOCK WEST OF THE UNION

The Fat Black Pussy
a coffee house
3000 1/2 East Kalamazoo
Lansing, Michigan
PRESENTS
Len and Judy

SHOWS AT 8:30 - 9:30 - 10:30 - 11:30 - 12:30 P.M. FRIDAY & SATURDAY
8:30 - 9:30 - 10:30 P.M. TUESDAY, WEDNESDAY, THURSDAY & SUNDAY

MSU International Film Series
(formerly Foreign Film Series)
An American in Paris
MGM's TECHNICOLOR MUSICAL
TO THE MUSIC OF GEORGE GERSHWIN
Starring **GENE KELLY** and
LESLIE CARON with
Oscar LEVANT, Georges GUETARY, NINA FOCH
Thursday, Friday-January 7 & 8 7:30 p.m.
FAIRCHILD THEATRE Admission: 50¢

CAMPUS THEATRE NOW SHOWING!
1:00-3:05-5:10-7:25-9:35
"One of the Year's Ten Best!"
N.Y. Times
Why did Emily call Charlie the most immoral man she'd ever met?
METRO GOLDWYN MAYER presents MARTIN RANDSHOFF'S PRODUCTION
JAMES GARNER JULIE ANDREWS DOUGLAS
THE AMERICANIZATION OF EMILY

BEST IN FOREIGN FILMS
TODAY ...
Thru Thursday:
from 7:00 P.M.
STATE Theatre
Phone 332-2814
THE ACADEMY AWARD WINNER! "Best Picture"
Tom Jones
EASTMANCOLOR At 7:10, 9:40 p.m.
FRIDAY: "My Nights With Françoise"
"Anatomy of a Marriage" is diverting ... A Fascinating
Exploration of Motives and Memories Each Partner Chooses!
-N.Y. Daily News
"ANATOMY of a MARRIAGE"
"My Days With Jean-Marc"

MICHIGAN THEATRE
482-7211
TODAY Feature at 1:00-3:05-5:15 7:25-9:35

**Cary Grant
Leslie Caron**

For Reasons too Funny
to explain the Name
of the Picture is...

"Father Goose"
TECHNICOLOR
TREVOR Howard
Next! "PLEASURE SEEKERS"
FRIDAY!
SNEAK PREVIEW
at 7:15 ONLY!

GLADMER THEATRE
482-9331
Continuous From 1:00 P.M.
NOW PLAYING!

Feature at 1:00-3:05
5:10-7:15-9:30 P.M.
The Comedy Hit Of
The Year!

She plays the girl who
became the leader of the
sex revolution in America...

He plays...

**Tony Curtis
Natalie Wood
Henry Fonda
Lauren Bacall
Mel Ferrer**

Sex and the Single girl

Co-Starring FRANK JEFFRIES
and COUNT BASIE and HIS ORCHESTRA
TECHNICOLOR From WARNER BROS.

NATIONAL'S Greatest—


NATIONAL
FOOD STORES

**Food
Budget**
SALE
TIME TO START SAVIN' SAVIN'

U.S.D.A. CHOICE, LEAN, TENDER AND JUICY...

ROUND STEAK 75^c lb.

Rolled and Tied, U.S.D.A. Choice Beef, Tender and Juicy

Boneless Rump Roast . . . 89^c lb.

Lean, Gristle Free

Cube Steaks 89^c lb.

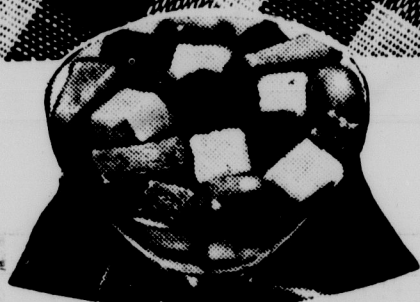
Young and Tender. Rich in Iron. Cook with Onions

Sliced Beef Liver 39^c lb.

**Banquet Frozen
POT PIES**

- Beef
- Chicken
- Turkey

15^c
**Banquet Frozen, Complete
DINNERS**
3 11-Oz. \$1
All Varieties Size

Ground Beef Round 69^c lb.


Orchard Fresh California

**FRUIT
COCKTAIL**
5 15-Oz. \$1
Cans

Orchard Fresh California

PEACHES
4 1-lb., 13-oz. \$1
Cans

Slices or Halves

Hillside Creamery

Fresh Butter 65^c lb.

Betty Crocker Sweet or Buttermilk

Biscuits 3 8-Oz. 25^c
Pkgs.

Detergent with Towel in Package

BREEZE
79^c
2-Lb., 6-Oz. Giant Box

Top Treat, All Varieties

Cake Mixes 4 19-Oz. \$1
Boxes

All Varieties, Ready to Mix

Knorr Soups 39^c
Pkg. of 2

Gets Your Clothes Really Clean

Liquid Chiffon 29^c
12-Oz. Size

Regular Tasty Party Treat

Appian Way Pizza . . . 39^c
12 1/2-Oz. Size

Ammoniated for Better Cleaning

Fels Cleaner 57^c
28-Oz. Size

Gets Stubborn dirt out fast

Instant Fels 79^c
5 1/2-Oz. Size

For Weight Watchers, All Flavors

Sego Beverages 29^c
10-Oz. Size

Creamy and Crunchy Delicious

Shedd's Peanut Butter . . 69^c
24-Oz. Size

Delicious Pizza with Cheese

Appian Way Pizza . . . 49^c
14-Oz. Size

Natco, Grade "A," Fresh

**Large
Eggs**
39^c
Dozen in Carton

NO COUPON NEEDED!


TISSUE SALE!
Softee TISSUE 5^c
4-Roll Pack, 20c Roll

Northern TISSUE 8^c
4-Roll Pack, 32c Roll

Scott TISSUE 12^c
Roll

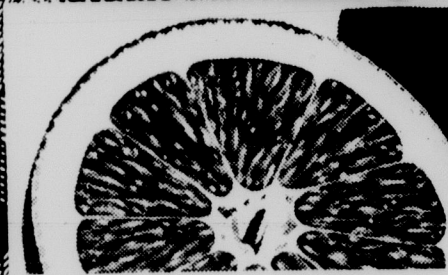
White or Assorted Colors

Cut From Young Lean Porkers

**PORK
CHOPS**
49^c
Rib Half of Pork Loin
Cut into Chops
LB.

59^c
Loin Half of Pork Loin
Cut into Chops
LB.

Packages Average 5-7 Pounds



Calif. Easy To Peel

**NAVEL
ORANGES**
12 59^c
For

NATIONAL COUPON
FREE WITH THIS COUPON
50 EXTRA S & H Green STAMPS
With Purchase of 3 Lbs. or More
FRESH HAMBURGER
Redeem This Coupon at
National Food Stores
Coupon Expires Saturday, Jan. 9

NATIONAL COUPON
FREE WITH THIS COUPON
50 EXTRA S & H Green STAMPS
With Purchase of a Bottle
TOP TASTE MAPLE SYRUP
Redeem This Coupon at
National Food Stores
Coupon Expires Saturday, Jan. 9

NATIONAL COUPON
FREE WITH THIS COUPON
25 EXTRA S & H Green STAMPS
With Purchase of a 10-Oz. Jar
TOP TASTE GRAPE JELLY
Redeem This Coupon at
National Food Stores
Coupon Expires Saturday, Jan. 9

NATIONAL COUPON
FREE WITH THIS COUPON
25 EXTRA S & H Green STAMPS
With Purchase of Any Size
BRECK Creme RINSE
Redeem This Coupon at
National Food Stores
Coupon Expires Saturday, Jan. 9

NATIONAL COUPON
FREE WITH THIS COUPON
50 EXTRA S & H Green STAMPS
With Purchase of a Gal.
EASY LIFE BLEACH
Redeem This Coupon at
National Food Stores
Coupon Expires Saturday, Jan. 9

NATIONAL COUPON
FREE WITH THIS COUPON
50 EXTRA S & H Green STAMPS
With Purchase of a 44-Oz. Jar
TOP TASTE GRAPE JAM
Redeem This Coupon at
National Food Stores
Coupon Expires Saturday, Jan. 9

NATIONAL COUPON
FREE WITH THIS COUPON
25 EXTRA S & H Green STAMPS
With Purchase of 4 Lbs. or More
BANANAS
Redeem This Coupon at
National Food Stores
Coupon Expires Saturday, Jan. 9

DAWN-DEW FRESH FRUITS & VEGETABLES

Hand Picked Sweet Juicy

Jonathan Apples 39^c
4-Lb. Bag

Florida Butter Tender

Sweet Corn 39^c
5 Lge. Ears

Double S & H Green Stamps EVERY Wednesday

BE AMONG THE FIRST TO SELL YOUR "DON'T WANTS"

get BIG RESULTS with a low cost WANT AD

- AUTOMOTIVE
- EMPLOYMENT
- FOR RENT
- FOR SALE
- LOST & FOUND
- PERSONAL
- PEANUTS PERSONAL
- REAL ESTATE
- SERVICE
- TRANSPORTATION
- WANTED

DEADLINE

11 a.m. one class day before publication
Cancellations - 12 noon one class day before publication

PHONE

355-8255

RATES

1 DAY . . . \$1.50
3 DAYS . . . \$3.00
5 DAYS . . . \$4.50

(Based on 15 words per ad)
There will be a 50c service and bookkeeping charge if this ad is not paid within one week.

The State News does not permit racial or religious discrimination in its advertising columns. The State News will not accept advertising from persons discriminating against religion, race, color or national origin.

Automotive

AUSTIN HEALEY, 1957, excellent condition. Radio, heater, spare wheels. New tires, new top. 332-4630.

CHEVROLET, 1955, six stick, radio, heater. Mechanically perfect. Body fair. \$75. Ask for Dick. 355-8291.

CHEVROLET BEL AIR, 1956, V-8, Standard transmission. New tires, battery. Good mechanical condition. 355-3011 after 5.

CHEVROLET, 1958 2-door automatic. White walls. Must sell immediately. Best offer. IV 2-2396 between 5-9 pm.

CHEVROLET 1960 2-door. Radio, heater. Automatic shift. One owner. Good condition. \$750. Phone IV 2-5705.

CHEVROLET STATIONWAGON, 1959 Parkwood. V-8, Automatic. Very clean. \$700. Call 487-6261.

COMET 1961. Call Dave Simmons. ED 2-6521 after 6 pm.

DAN O'SHAUGHNESSY 2501 E. Michigan Lot 2

1962 TR 4 with overdrive, radio, Sharpest in town. \$1,695. 487-5089

DAN O'SHAUGHNESSY 600 E. Michigan Lot 1

1962 Renault/Gordini for the economy minded. Low mileage. Excellent condition. \$795. 484-7445.

DODGE, 1961 4-door, six cylinder black stationwagon. Automatic transmission. Good condition. Must sell. NI 6-2101.

DODGE 57, V-8 automatic. Excellent mechanical condition. New tires. New exhaust. Radio, heater. 332-4630.

MERCEDES-BENZ, 1956, S.L. powered by 327 cubic inch V-8 engine. Becker AM-FM. Michelin X tires. \$3,500 invested. Best offer near \$2,200. ED 2-3846.

Moving?

Get this

Free Book

How to Buy a Move

Gives the facts about moving. Explains the moving estimate. Shows how charges are determined. It's FREE... call

484-1421

NORTH AMERICAN VAN LINES

WORLD WIDE MOVERS

1350 Haslett Road

332-5041

Automotive

OLDSMOBILE 1963 F-85. Cutlass. Full power. One owner. Low mileage. Top condition. Call ED 2-4422, afternoons. 3

OLDSMOBILE 1964 Jet Star '88'. 2-door, hardtop. 5,200 miles. Take over payments. Phone OX 4-6046. 3

OLDSMOBILE 1964 Jet Star Convertible. White with green interior. All power plus accessories. 11,500 miles. TU 2-8525. 3

RAMBLER, 1960 Rebel. V-8 4-door sedan. Automatic transmission. Power brakes and steering. A quality value. \$645. HAROLD PLETZ MOTOR SALES, 150 E. Grand River, Williamston. 655-1870. C3

VOLKSWAGEN 1958. 2-door sedan. Radio. Seat belts. Excellent condition. Private owner. Phone ED 2-3585. 5

Employment

COLLEGE GRADS. All academic majors considered. Numerous openings with nationally known organizations. Specialized training programs. MCGILL EMPLOYMENT, 710 Bank of Lansing Building. 5

WATRESS FOR counter. Full or part-time. No evening or Sunday. Uniform furnished. Spud-nut Shop, 225 M.A.C. 3

WANTED: BUS boys. Beta Theta Pi. Call 337-1495. Ask for the steward. 3

SECRETARY WANTED. Short-hand, typing required. Lansing Law office. Full or part time. Call IV 9-1441. 5

CHOOSE YOUR own hours. A few hours a day can mean excellent earnings for you as a trained Avon representative. For appointment in your home, write or call Mrs. Alona Hucks, 5664 School St., Haslett, Michigan or call evenings, FE 9-8483. C1

AUTO WASH. Full time and part-time. Seven days week. Apply, 248 West Grand River. • 5

BUSBOYS NEEDED. Bus evening meal, eat two meals. Kappa Sigma House, ED 2-5092. 3

For Rent

NEJAC TV RENTALS, 482-0624 Zenith portables - \$9 per mo. C8

GARAGE SPACE for two small cars and one large. Call IV 9-2593. 3

GARAGE FOR rent. 139 Kedzie. Call ED 2-5102 after 4:30 pm. 1

GARAGE, 213 Bailey St. \$20 per term. Call ED 2-5507 or ED 2-4546. 3

PARKING SPACES near campus and downtown East Lansing. Reasonable. Phone ED 7-2345. 5

WANTED ONE male roommate over 21. 314 Trailer Haven. Ask for Fritz. 355-9405. 3

Apartments

NEEDED FOURTH male roommate. Winter and/or spring terms. Six month lease. Riverside East. 351-4707. 5

LUXURY APARTMENT. Two men needed. \$43 per month. No lease. 324 E. Michigan Avenue. Apartment 1. 3

WANTED: ONE or two girls. Share 3-bedroom house. Two blocks from Berkeley. \$30 monthly. ED 7-0122. 3

EAST LANSING. One block from campus. New, unfurnished three room apartment available. Air conditioned, carpeted, paved parking. \$125 per month. Graduates and faculty only. Call 332-1959. 5

GIRL WANTED for cozy, two-bedroom, 2-bath apartment. 5 minutes from campus. Call 482-8519 or IV 5-8706. 3

451 M.A.C. Ave. Quiet room with kitchenette. Private entrance. Shower. Three blocks North Union. ED 2-3696. 3

WAGES. FREE rent of apartment. Exchange for little morning-evening work. Foreign girl welcome. ED 2-5977. 3

EYDEAL VILLA BURCHAM WOODS

Outstanding values in furnished apartments, if you're looking for a perfect location spacious well-appointed accommodations, color coordinated built-in Teraza kitchens, tile baths, ample closets, beautiful pool, air conditioning, wall-to-wall carpets, custom drapes and every feature for your comfort and convenience at sensible down-to-earth prices - you'll find it all at Eydeal Villa and Burcham Woods. We're equipped with the best GE range, refrigerator and air conditioning.

FIDELITY REALTY & INVESTMENT CO. 1350 Haslett Road 332-5041

For Rent

NEWLY RE-DECORATED. One block from Berkeley for one or two women over 21. 351-4266. 3

LUXURY FOUR man apartment. Need two male students to live with senior and graduate assistant. \$60 per month. Inquire. Apartment 12, 1320 E. Grand River. Phone 332-0445. 3

MODERN STUDIO apartment. Furnished. Moderate rent. 337-7094 after 6 pm. 5

FOURTH MALE student for winter and spring terms. Riverside East. Substantial discount. 351-4484. 3

ONE WORKING girl to share four girl luxury apartment. \$44. Call 337-1544 after 5. 5

TWO SINGLE girls needed to share beautiful luxury apartment with two other girls. Phone 351-4002. 1

EAST LANSING. Studio apartment. Two male students. Approved. Supervised. Share kitchen. Parking. \$10 weekly. 332-6078. 3

MALE ROOMMATE for two man apartment. Over 21. Parking. 101 Marshall. Call 482-6092. 3

NEEDED FOURTH man. \$60 per month. One block from campus. Immediately. 337-2146. 3

MALE STUDENT to share downtown apartment with a Junior. 337-2907 or TU 2-3715. 3

ROOMMATE NEEDED. Share completely furnished house near campus with three male graduate students. 337-1041 evenings. 3

EFFICIENCY. CLOSE IN. Two girls needed. Two girls over 20. Non-smokers. \$11 each. 337-1598. 3

ONE MALE student needed for luxury apartment. Winter-Spring terms. 609 West Grand River. 351-5478. 3

THREE ROOMS and bath. Furnished. Utilities paid. \$90 per month. 1125 McCullough. Lansing. IV 4-0741 after 4. 3

FOURTH MALE student to share apartment. Near East Lansing City Hall. 351-4062. 1

NEEDED ONE or two men to sublease luxury apartment for winter and spring terms. Close to campus. All conveniences. Urgent. 351-5149 after 5 pm. 5

RIVERSIDE EAST APTS. 1 apt. available for winter & spring terms for 2, 3 or 4 persons. Call 332-0255. 3

ARBOR FOREST APARTMENTS. East Lansing. Unfurnished. New, spacious, one-bedroom, ample closets, Frigidaire kitchen. Beautifully carpeted. Situated in charming quiet setting. Adults only. 337-0634. 3

ONE OR two roommates. One girl Winter-Spring. One girl Winter only. One block Berkeley. 351-4266. 3

TWO GIRLS, share nice two-bedroom apartment. 126 Fern. Two blocks North Union. 332-0091. 10

NEED ONE man for 4-man, unsupervised furnished apartment. Parking. 1034 S. Harrison. Phone 351-5596. 5

Houses

TWO BEDROOM furnished. Two or three MSU men. \$10 per month plus utilities. Call ED 2-4770. 5

EAST LANSING. One man to share furnished house with three others. Parking. ED 2-1027. 3

ATTENTION CO-EDS: Roommates needed to share first floor of a house. Near campus. Utilities paid. \$44 per month. Fully furnished with all conveniences of home. Call 351-5173. 3

FURNISHED CABIN at Lake Lansing for two male students. \$8 weekly per student. 332-8932. 3

ROOMMATE WANTED to share with two men. \$40 per month plus 1/3 utilities. 2213 Vine Street. Phone 484-4249. 3

GIRLS! SHARE nice house including dog. \$45 monthly. Parking. 526 Stoddard. ED 2-0747 after 5 pm. 3

EAST LANSING, furnished home, near campus. 4 male students. Call Winifred Dunham, IV 4-5469. Evenings, TU 2-4457. 3

FRANDOR, GENTLEMAN student to share furnished house with another male student. Parking. No drinkers. 332-4913. 1

ONE CO-ED to share house, single bedroom for winter and spring terms. Call 332-1212. 3

NEED TWO men to share modern spacious house for five. \$30 month. Car necessary. ED 2-0340. 3

For Rent

Rooms

NEAR CAMPUS. Serious mature men. Quiet studying. Kitchen. Parking. Economical living. \$9. 939 Burcham. 332-2788. 337-0881. 3

LARGE PRIVATE room. Furnished. Male graduate student. See at 603 Sunset Lane after 7:30 pm. daily. 5

EAST SIDE. Clean pleasant room for male. Cooking. Private entrance and bath. Parking. Reasonable. IV 5-8557. 3

NEAR MSU. Roommate over 21. Wanted for large sleeping room. Cooking privileges. Call 332-6471. 3

MALE STUDENT. Single. Share study, bath. Kitchen privileges. Parking. Will furnish bedlinens. Call IV 9-0583. 5

APPROVED DOUBLE room for men. Cooking, parking. One block from Berkeley. Call ED 2-5507 or ED 2-4546 or inquire at 213 Bailey St. after 5. 3

APPROVED ROOM for men seeking quiet for study. \$10. Parking. \$1. No in-room cooking. Hotplate in all OK. Close to Union, Berkeley, P.O. Ideal for man wishing to raise his GPA. Phone 337-1449 or 355-0089 or if no answer, visit 428 Grove St., and ask at side door. 3

MATURE SERIOUS students. (Vets, etc.). Clean quiet home. Private entrance. 5 minutes to campus. ED 2-0097. 1

PRIVATE ROOMS. Girls, unapproved. Walking distance. Quiet. Call Bob Swanson, ED 7-1641 or ED 2-1119. 3

ROOMS FOR ONE or two young ladies in exchange for light housekeeping. Holt, 699-2729. 8 am. to 4:30 pm. 3

UNSUPERVISED HOUSING for men. Four blocks to campus. Kitchen and lounge. Phone 485-6500. 3

MEN 21 or over. Nicely furnished rooms. Reasonable. Near campus. Kitchen, parking facilities. Phone ED 7-2345. 5

MEN. ONE-HALF double. Clean, quiet. Two blocks to Berkeley. 532 Ann. after 6 pm. 5

ONE MAN. Pleasant room. Private bath. Parking. ED 2-5374. 3

MEN. APPROVED. Singles, doubles. \$10 per week. Cooking, parking, laundry. Near campus. 327 Hilcrest. 332-6118. 3

QUIET ROOM. Woman. Separate bath, kitchen for roomers. Campus 3 blocks. Unsupervised. 332-0647 after 5 pm. 3

WOMEN. APPROVED. One block from campus. Cooking privileges. 332-8945. 5

TWO PRIVATE furnished rooms. Cooking. Male students. \$10 per week. 130 Fern. 332-0091. 10

TWO MALE graduate or senior students to share double room at 143-Boggs St. 332-4558. 1

UNAPPROVED. DOUBLE room. Recreation room included. Parking. Close. \$45. Call ED 2-3534 or 351-4079 after 5 pm. 3

SUPERVISED ROOMS and apartment. Male students. Cooking, parking. 1 1/2 blocks from Berkeley. Call IV 5-8836. 3

APPROVED ROOMS for men in new home. Ceramic showers. Parking. ED 2-1183. 3

For Sale

KIRBY SWEEPER with attachments. Less than six months old. Will sacrifice. \$75. Call 882-9886. 1

CELLO. RARE George Klatz. Certified. Will sacrifice. Easy terms. Wilcox Secondhand Store, 509 E. Michigan, Lansing. IV 5-4391. 5

SKIS, HEAD Standards. 6 ft. 9 in. Nevada Toe. Marker Heel. Excellent condition. \$75. 355-1038 after 6 pm. 3

FOR LOW RATES on auto insurance it's State Farm Mutual. World's largest auto insurer. Call or see your State Farm agent today. Ask for ED KARMANN, IV 5-7267. In Frandor. C1

SWEETERS. \$10 and up. Repair all makes. Free pick-up and delivery. Capital Vacuum Cleaners, IV 9-2636. 3

BICYCLE STORAGE - sales, service and rentals. EAST LANSING CYCLE, 1215 E. Grand River. Call 332-8303. C

ACCIDENT PROBLEM? Call Kalamazoo Street Body Shop. Small dents to large wrecks. American and foreign cars. Guaranteed work. 489-7507. 141 East Kalamazoo. C

NO RAISE IN prices at WENDROW'S ECON-O-WASH. 32 speed clean washers, 20¢ - ten minutes drying, 10¢. 3006 Vine St., 1/2 block west of Frandor. C1

LEARN BASIC fundamentals; hand-writing, analysis. East Lansing. 332-5694. 3

NEJAC TV RENTALS, 482-0624 Zenith portables - \$9 per mo. C8

What's New?

"Jewels of My Younger Years"

By: John W. Fields

(Janitown Union Bldg.)

On sale at MSU, Student & Campus book stores. 34.

For Sale

AQUARIUMS ... like new 26 g. Metaframe with stand, full hood, filter, etc. Cost \$75 two months ago. Sacrifice at \$45.5 g. and 2 g. tanks with heaters and filters for \$8 and \$5. Also, Zenith Trans-Oceanic radio 3 weeks old. Cannot meet payments. \$210. Also, Telefunken tape recorder, portable. Like new. Cost \$175. A steal at \$90. Call Tony, 353-3132 day or evening. 3

TAPE RECORDER, Vista Model 510, five transistor portable. Extra equipment. New. \$75. Best offer. ED 2-3846. 3

ACCORDION, DALLATE. 15 treble, 6 base. Wrist shift. Electric hook-up. \$599 or best offer. 372-2907 or TU 2-3715. 3

LONG PLAY 33 1/3 records, books and Mexican-Indian artifacts; Aztec, Zapotec, Totem, etc. 372-0330. 5

STEREO TAPE recorder. Really cheap. ED 2-8369. 5

\$37.77 BUYS a new English 3-speed bicycle. Used bicycles and rentals also available. ACE HARDWARE AND GIFTS, 201 E. Grand River across from the Union. ED 2-3212. C

FREE! A thrilling hour of beauty! For appointment, call 484-4519. MERLE NORMAN COSMETICS STUDIO, 1600 E. Michigan. C3

SKIS with bindings. Laminated wood, plastic bottoms. One year old. \$25. Call John, 355-8786. 3

FIREPLACE WOOD Well seasoned Maple 699-2867 C

CLOTHING. MEN'S (size 42). Women's (size 9-10). Infants and children's. Good quality and condition. ED 7-0127. 3

SKIS, POLES, bindings. 6 ft. 3 in. Ladies Northland. \$7. Call 485-5011 after 5 pm. 5

GIVE AWAY skis. Blizzard, 215 cm. Long thongs and toe plates. Not for beginners. 332-6139. 1

GIRL'S BICYCLE. Used - in good condition. IV 5-1436 after 6. 1

Personal

WORLD'S GREATEST Rock 'n' Roll Band. ED 2-8369. 5

SMART STUDENTS get the most out of your college education. Marry a wealthy eighty year old. Read our Bulletin on the three basic points. The catch, the will, and the kill. Send 50¢ for handling costs to Share the Wealth, PO Box 9343, Lansing, Michigan. 3

FREE, CHARMING, ginger white kitten. 10 weeks. Gorgeous large gray cat. Both male. Call 332-4097. 1

JOHNNY JAMES QUARTET for the finest in dance and party music. 351-5229. 5

NOBODY PRACTICES on you when you're our customer. You'll quickly find that we've proven our ability with your friends and colleagues. Call Bubolz for any insurance. 332-4604. C1

THE KNIGHTS OF HARMONY for the latest and finest in Dance Music 332-2575. 6

NEJAC TV RENTALS, 482-0624 Zenith portables - \$9 per mo. C8

Peanuts Personal

DIED: FREDDIE Phrooth of natural causes over vacation. Buried on family pet plot. Rest in peace. Fred. 1

Real Estate

FOR SALE: Two-bedroom ranch. Attached garage. Near campus. Low down payment. 1251 Lilac Ave. 3

Service

EXPERIENCED MOTHER will care for your pre-school child in my East Lansing home near Frandor. Begin anytime. 332-3485. 3

DIAPER SERVICE, same diapers returned. Either yours or ours. With our service you may include two pounds of baby clothes that do not fade. Diaper pail furnished. 3

AMERICAN DIAPER SERVICE 914 E. Gier St. IV 2-0864 C

ACCIDENT PROBLEM? Call Kalamazoo Street Body Shop. Small dents to large wrecks. American and foreign cars. Guaranteed work. 489-7507. 141 East Kalamazoo. C

NO RAISE IN prices at WENDROW'S ECON-O-WASH. 32 speed clean washers, 20¢ - ten minutes drying, 10¢. 3006 Vine St., 1/2 block west of Frandor. C1

LEARN BASIC fundamentals; hand-writing, analysis. East Lansing. 332-5694. 3

NEJAC TV RENTALS, 482-0624 Zenith portables - \$9 per mo. C8

Service

DIAPER SERVICE, three types of diapers to choose from. Bulk wash for cleaner, whiter diapers. Fluff dried and folded. Use yours or rent ours. Containers furnished. No deposit. 25 years experience. BY-LO DIAPER SERVICE, 1010 E. Michigan. IV 2-0421. C

THESIS PRINTED

Board Approves Personnel Changes

The MSU Board of Trustees gave approval Dec. 17 to 11 appointments, 17 leaves, 9 transfers and miscellaneous changes, 5 resignations and terminations, and 17 retirements.

Jeanette A. Lee, professor of home economics, was appointed dean of MSU's College of Home Economics, effective Dec. 17. Other appointments approved were: Helen J. Fairman, home economics agent, Washtenaw County, Jan. 1; Margaret Ann Ross, home economics agent, Huron County, Jan. 1; Donald Edmund Kawa, instructor, forest products, April 1; Patrick H. Doyle, professor, mathematics, Sept. 1; Jacqueline A. Wright, instructor, nursing, April 1.

Other appointments included: Harold A. Winters, associate professor, geography, Sept. 1, 1965; Ethel M. Des Autels, librarian, library, Nov. 23; Roger C. Gifford, bibliographer, library, Dec. 1; Francis X. Scantrell, divisional librarian, library, Jan. 18; George A. Hay, adviser, Economic Development Institute, Nigeria Program, Jan. 1 to June 30, 1966.

The Board approved the following sabbatical leaves: Lawrence W. Witt, professor, agricultural economics, Jan. 29 to July 28, for study at the University of Arizona; Clifford L. Bedford, professor, horticulture, March 15 to Sept. 14, for research in eastern and southeastern U.S.; and writing in East Lansing; Robert S. Alexander, assistant professor, art, April 1 to June 30, for study and travel in the U.S.

Sabbatical leaves were also approved for: David K. Berio, associate professor and chairman, communication, Jan. 1 to May 15, to study and write a book in East Lansing and Washington; Jean LePere, associate professor, elementary and special education, Sept. 1 to Dec. 31, to write a text on children's literature.

Other sabbatical leaves approved were: Henry G. Blosser, professor, physics and astronomy, June 16 to Sept. 15, 1965, for study in Virginia and environs; Robert Repas, associate professor, labor and industrial relations, Sept. 1, 1965 to Aug. 31, 1966, for study in Great Britain; Lyle Blair, associate professor and director, MSU press, Jan. 1 to March 31, 1965, for travel in Australia and Southeast Asia.

The Board of Trustees also approved leaves for: Munns A. Caldwell, horticultural agent, Berrien County, Dec. 1-6, 1964, to continue work with AID in Nigeria; Eugene F. Dice, agricultural agent, Genesee County, Dec. 1-31, to complete Ph.D. at the University of Michigan; Stanley A. Mahaffy, agricultural agent, Genesee County, Jan. 13 to Feb. 24, to attend extension school at the University of Arizona.

Other leaves approved: Faye Kinder, associate professor, foods and nutrition, April 1 to July 31, to serve as consultant on foods and nutrition in Oklahoma; Alfred Leitner, professor, physics and astronomy, Sept. 1 to Aug. 31, 1966, to work on new curriculum at Harvard University.

Leaves were also approved for: Joseph M. Prochaska, assistant professor, urban planning and landscape architecture, Jan. 1-31, to continue work at Stanford University; Lester F. Wolterink, professor, physiology, Jan. 1 to Dec. 31, to work on the biosatellite project at NASA Ames Research Center, Moffett Field, Calif.

Other leaves included: Irvin J. Lehmann, associate professor, Evaluation Services, Aug. 2-13, to teach at the University of Manitoba; and David Klein, associate professor, social science, Jan. 1 to Aug. 31, to do research and editing for the Association for Crippled Children in New York City.

The Board approved the following transfers: Elizabeth N. McPherson, from 4-H agent, Lenawee County, to home economics editor, radio broadcasting, Dec. 1; Max E. Austin, from horticultural agent, Macomb County, to horticultural agent, East and South Central Districts, Dec. 7; Munns A. Caldwell, from horticultural agent, Berrien County, to horticultural agent, Macomb County, Dec. 7.

A leave for C. C. Sigerfoos, associate professor of Engineering Instructional Services, from Jan. 1, 1965, to March 31, 1966.

S.E.A. To Hoot

There will be an S.E.A. Hoot-nation featuring Linda Vickerman Jan. 6 at 7:30 p.m. in the Erickson Hall faculty lounge

was cancelled because of the revolution in Bolivia and a resultant change in AID plans for that country.

A change in status was approved for Fred K. Hoehner, professor of Labor and Industrial Relations, from full time to half time from Jan. 1 to March 31, to enable him to work for the U.S. Poverty Program on a half-time basis.

The Board of Trustees ap-

proved a title change for Jean W. Busfield, from assistant editor to managing editor of the MSU Press, effective Jan. 1.

J. Colby Lewis III, professor of television and radio, and coordinator of closed circuit television, was also designated manager of television broadcasting for MSU, effective Jan. 1. He has been serving as acting manager since July.

Burton Friedman, assistant

professor of administration and higher education, was designated acting codirector of the Guatemala Project, from Dec. 1-31.

The MSU Board of Trustees approved the following resignations and terminations: Paul Shogren Jr., 4-H agent, Marquette County, Dec. 6; Ali A. Moslemi, instructor, forest products, Dec. 31; James M. Crowner, assistant professor, elementary and special education, Nov. 30; Ar-

chie O. Haller, professor, sociology, June 30; and H. Kelly Crockett, associate professor, American thought and language, Dec. 31.

The following retirements were approved by the MSU governing board (date of first employment by MSU in parentheses): Irene M. Baird, Ogemaw County extension agent, home economics, Dec. 30 (1953); J. Murray Barber, professor of

music, July 1 (1939); Victor C. Beal, cash crops agent, Montcalm, Kent and Ionia Counties, Dec. 30 (1936); and George F. Dieckels, Baraga County extension director, July 1 (1931).

Other retirements approved were: Hubert M. Brown, assistant professor, crop science, July 1 (1921); Lydia I. Lightner, professor, health, physical education and recreation, Sept. 1 (1930); Thelma Porter, dean of home

economics, July 1 (1936); Clarence V. Amiet, utility man, physical plant, May 1 (1928); and Vera Brink, clerk in Union cafeteria, Jan. 15 (1933).

Retirements also included: Frederick Burgess, building maintenance supervisor in Student Field Hall, July 1 (1948); Eugene Chapman, custodian, Mason-Adair Hall, July 1 (1944); Barbara Gehl, food service helper in Union, July 1 (1944); and

reel Hendrickson, foreman in the Dairy Plant, July 1 (1927); Jay McNitt, maintenance man in married housing, Jan. 1 (1947).

The Board also approved retirements for: Carlyle M. Miller, fourth in the Physical Plant, Aug. 1 (1949); George Mitchell, gym store manager in health, physical education and recreation, July 1 (1938); and Dorothy M. Stevenson, executive secretary in Dairy, Jan. 1 (1921).



WIN A WIDE WORLD VACATION

WIN \$100

UP TO 130,000 Winners! 4 Ways to Win!

- 1 WIN \$100 CASH**
Get a Vacation Bingo concealed city ticket every time you visit a Kroger Store. No purchase necessary. Fill just one line vertically, horizontally or diagonally on your Vacation Bingo card and you've won \$100!
- 2 WIN KROGER BRAND FOODS**
If your Vacation Bingo disc shows a picture of a Kroger product, you may turn it in and get the item FREE!
- 3 WIN A WIDE WORLD VACATION FOR TWO**
After you punch out your concealed disc fill out and detach your official entry blank and deposit at your Kroger store to be eligible for weekly drawing of a one-week, expense-paid trip for two to any one of 24 world famous cities!
- 4 WIN TOP VALUE STAMPS**
If you get a Vacation Bingo disc showing a picture of Toppie, you can turn it in and receive 50 Top Value Stamps FREE!

FREE

a 1 1/4 lb. loaf of Sliced

Kroger White Bread

with this coupon and \$2.50 or more purchase.

Free White Bread

with this coupon and \$2.50 or more purchase (excluding beer, wine and tobacco products). Redeem at your favorite East Lansing Kroger store thru Saturday, Jan. 9, 1965.

CHARMIN TOWELS

2 rolls 39¢

BUTTERMILK BREAD

2 20-oz. loaves 39¢

Chuck Roast

37¢ lb.

Charmin Tissue

roll 7¢

4 rolls 28¢ with coupon below & \$5 or more purchase

TEA BAGS

pkg. of 48 49¢

BEEF STEW

24-oz. can 39¢

SPECIAL LABEL PUFFS FACIAL TISSUE

Box of 400 19¢

Campbell's 1-lb. Pork & Beans

7¢

Franco American 15 1/4 oz. Spaghetti

ea. 7¢

EMBASSY SALAD DRESSING

quart jar 29¢

White or Assorted Colors CHARMIN TISSUE

4 roll pack 28¢

CAMPBELL'S PORK & BEANS

1-lb. can 7¢

FRANCO AMERICAN SPAGHETTI

15 1/4-oz. can 7¢

50 EXTRA TOP VALUE STAMPS

with purchase of a Boston Rolled BONELESS POT ROAST

100 EXTRA TOP VALUE STAMPS

with purchase of a 14-oz. jar of SPOTLIGHT INSTANT COFFEE

50 EXTRA TOP VALUE STAMPS

with purchase of a Strawberry or Apricot KING SIZE COFFEE CAKE

EMBASSY SALAD DRESSING

quart jar 29¢

CAMPBELL'S PORK & BEANS

1-lb. can 7¢

FRANCO AMERICAN SPAGHETTI

15 1/4-oz. can 7¢

EMBASSY Salad Dressing

Qt. 29¢

Lettuce

2 for 29¢

Navel Oranges

12 59¢ for



- ... the LARGEST collection of USED books in town
- ... the FASTEST service in town
- ... the PLACE TO SELL used books
- ... the MOST COMPLETE student store in town
- ... the BEST place in town for

BOOKS and SUPPLIES

It's The

CAMPUS BOOK STORE

BUY USED BOOKS

SAVE 25%

East Lansing's Department Store For Students

Where East Lansing And MSU Meet

131 East Grand River Avenue

Across From The Union Building