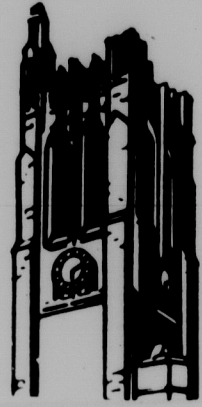


**MICHIGAN
STATE
UNIVERSITY**



STATE NEWS

East Lansing, Michigan

Thursday, April 17, 1969



SPRING FASHIONS '69

Fashions: long, short story

By **BARBARA PARNES**
State News Staff Writer
"You've come a long way, baby" is one cigarette's advertising slogan, and it could also be a description of wo-

men's fashions today. Where once there were specific guidelines about what constituted the proper attire for the "well-dressed" woman, today individual innovation is the

most valued element in fashion.

This year marked the end of the war on pants for women. Trousers have become accepted as appropriate attire for almost every occasion, including the most formal. Consequently they are "starring" in the 1969 fashion "show."

Pants today, as one magazine describes them, are "easy and graceful," ranging from the tapered leg to the very popular elephant bells. They have moved from being worn on the hips up to the waist this year, giving the wearer a longer-legged look.

Pants are most exciting this season when coupled with tunic dresses of crepes and light knits, which are slipped over the wide trouser legs. In fact, the tunic this spring has become one of the most essential items in any woman's wardrobe.

The pants-tunic combination is considered especially appropriate for after-six. Pants for evening wear have turned-up cuffs highlighted by interesting oversteitching, slits and tabs. The tunic can be worn alone as a dress for the woman who still feels a little inhibited about wearing trousers for formal wear.

If you aren't wearing pants this spring, you'll probably find yourself wearing some modification of them, whether it be last year's innovation, the pant dress, or this year's jump suit, described in one advertisement as "the easy uncluttered stand on the newest 1969 look of all."

Pant dresses range from the tapered leg all the way to the old-fashioned bloomer shape. They are especially attractive when worn with matching jackets and appropriate accessories.

The move this spring is downward for jackets and sweaters.

Suit jackets are long and thin, as are the new spring cardigans which are but a few inches short of knee-length.

Pleats are also making news this season. They range in variety from wide-open inverted to full box pleats. Dresses have pleated bottoms and even pleated sleeves which are often cuffed tightly at the wrist. An interesting fashion look is the long, long, suit jacket worn with the pleated skirt-pleats just showing beneath the jacket hem.

The romantic look is still going to be popular this season. Dresses and blouses with long, full sleeves, cuffed or gathered at the wrist, make for the look which is softly feminine. Dresses with empire waists and low-cut necklines also have their place in the romantic look for the brave and daring individual. These items are most effective in voiles, chiffons and other lightweight fabrics which constitute the increasingly popular see-through appearance.

The newest item in the field of accessories is the waist sash. Worn with everything including pants, pant dresses and jump suits, the sash is a take-off from the neck scarf which came into prominence this fall.

Scarves for spring are longer,

fringier and very important in the season's wardrobe. Printed foulards, the heavy silk of a man's muffler and light chiffon are the materials for this accessory.

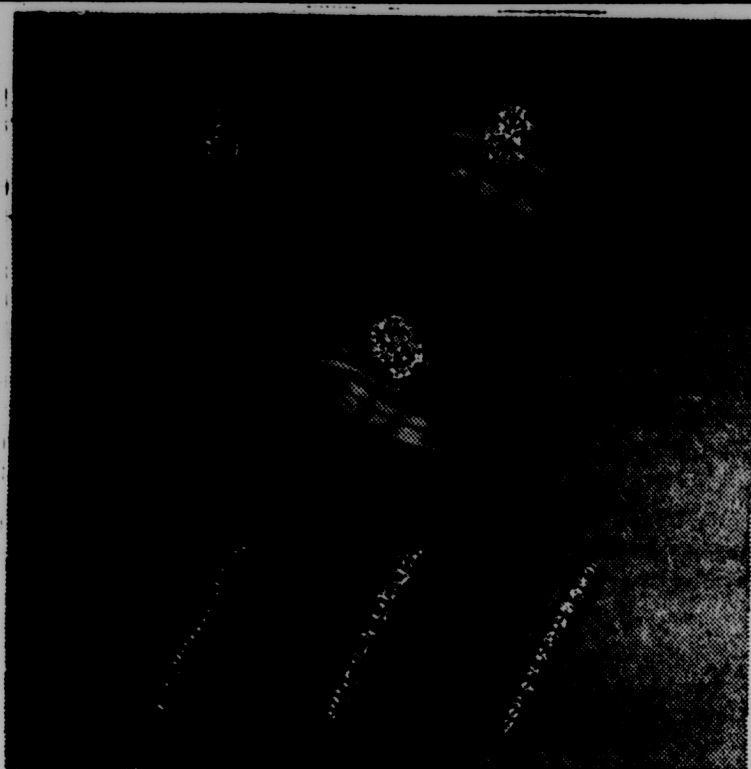
Worn from the shoulders, around heads in bandit fashion, tucked into trenchcoat collars and knotted as a man's tie, scarves are invaluable for transforming an ordinary outfit—especially if it is from last spring—into something very special.

Another accessory which has changed this spring is the belt. Leather has once again largely replaced chains which have been popular for quite a while. If you still want to wear the chain belt, it should be one of gold or silver metal hardened and widened into sculptural constructions.

This spring has marked the return of polka dots in blouses, scarves and sashes. An eye-catching combination is the polka dotted blouse with a polka dotted scarf or sash in the contrasting colors.

Every season the fashion hierarchy proclaims "the" colors for that particular season. This spring the colors to be seen in are whites and creams—including ivory, champagne and chablis.

Other colors for this season include the whole scale of browns and "baby ribbon" pastels as well as the patriotic red, white and blue combinations. Salt white is being used in conjunction with other colors in hats and shoes with contrasting heels. The color can also be seen in sheer white stockings which veil but do not hide the suntanned-leg.



SHE'LL REMEMBER THE DATE

Oval diamonds are skyrocketing in popularity.
Top left: \$425. Right: \$575. Center set: \$750.
Wedding circlets from left: \$825. \$995. \$525.

A Morgan Diamond Is for Now and Forever!

Extended Terms Available, of Course!

MORGAN'S

Jewelers Since 1876
121 S. Washington • Lansing

Brides Showcase

BRIDES ARE OUR FIRST NAME

Brides Showcase specializes in helping brides. We have everything for the bride but the groom. Total assistance with every detail of your perfect wedding.

Our staff of counselors total 30 years experience in 8000 weddings. Let them help smooth your bridal path.

P.S. See our collection of lovely spring prom gowns!

Mon.-Sat.
10:00 a.m.
- 5:30 p.m.

Mon. - Wed eves.
until 9:00 p.m.

Brides Showcase

1047 E. Grand River, E. Lansing PH. 332-5081

Spring

Add romance to your life with charming little curls or a soft, long style.

Wiglets ... from \$7.00
Cascades ... \$12.95
Falls ...from \$25.95
Wigs ... \$29.95

All human hair, hand-tied.

MR. MARTIN'S HAIR FASHIONS

952 Trowbridge In Spartan Shopping Center East Lansing 332-4522

914 Southland St. In Southland Commerce Center Lansing 882-2700

Spring handbags swing in squares

Handbags for 1969 have lost the soft look and have gone square.

Geometric shapes with harsh edges have replaced soft, mushy purses.

Lunch pails, treasure chests, and box styles are made from wood, plastic, and reinforced leather. The handle is tiny and stiff. The boxes are decorated with scrolls and flowers, some painted, others decouped.

Leather purses have taken on the great new sausage shape. These bags are carried on neat short handles and boast the finest soft leather of antique quality.

Other bags are slung on long leather straps or chains which are carried more on the back than from the shoulder.

Hard leather combines with bold cut-away edges to form the Italian look. Leathers are more off-white than pure and light browns will be carried all through the spring season.

Cover credit

This year's spring fashions include brightly colored scarves and hats and low-neckline outfits. State News photo by Bob Ivins was taken at Paraphernalia.

24 HOUR FASHION

Pants revolution strikes nation

By DENISE FORTNER
State News Staff Writer

Ready: Take shirts of sheer voile.

Set: Add matching flared pants.

Go!

It's called the "pants revolution." It works like this. Pants are no longer something you slip into after classes or wear for grubbing down Grand River. They're a 24-hour thing now. Pants-people believe in pants, live in pants, even collect pants.

For that late snack there are frank little polo shirts nipped into bell bottom blue jeans.

For the between-classes-look rumply jeans and tired slacks are out. Only pants with go are in. The smart outdoor-weather pants suit consists of durable cotton or denim pants worn with a matching trench coat complete with military brass.

Tunics popular

Another fashion flash that's sweeping the male and female fashion world is wide-legged pants with a matching long lean tunic. The tunic may be either sleeveless and worn with a fresh sleevy shirt and loops of thin chains around the neck may be bloused and nipped in at the waist by a matching belt.

Fashion 1969 knows no color or pattern clashes. Kick off with elephant-leg pants with a woven plaid, sash or a striped scarf at the waist and finish with a striped voile shirt.

Both sexes are donning flowered ruffled shirts with matching flowered, flared leg pants for a more formal affair. Women leave the men behind though when they go to flowing pant dresses.

Umbrella culottes pleated



Lady Longlegs

Wide bell-bottom pants give this coed a long-legged look. State News photo by Lance Lagoni.

by the mile, float beneath a sheer dotty voile tie-on shirt. These same flowing pants get even more romantic with a switch of the shirt to an airy midriff soft blouse.

Packable pants

Pants are not only some of the most wearable clothing to swing through spring in, they are also the most packable. The soft packables go in and out of a suitcase a dozen times without losing their good looks. One soft packable is a pair of travel pants suited in a neat khaki-colored jacket and slicked with a black patent chain belt. Dacron and cotton make for soft packables for weekends away from school.

Spring pants will have a three-inch waistband with tucked

front and deep cuffs, like the ones Fred Astaire wears on the "Late Show."

Fabrics for the pants revolution are as varied as the styles

of pants. Poplin is one of the favorites this spring—but soft is the important word to remember about pants.

Worn for grubs, campus ca-

rousing or dining and dancing pants have invaded the nation and MSU students can look forward to the pants revolution coming to campus.

FOR THE FASHION CONSCIOUS

Rings
Necklaces
Earrings

"When you think of Cards":

CARD SHOP

Across from Home Ec. Bldg.
309 E. Grand River Ph. 332-6753

1.00
Opaque Knee Socks
69¢
Limit 3
East Lansing Store Only
Expires After 4-19-69

10% off
The Discount Price on ALL SHORT SLEEVE CREW NECK SHIRTS
Limit 1
East Lansing Store Only
Expires After 4-19-69

2.50
Opaque Panty Hose
179
Limit 3
East Lansing Store Only
Expires After 4-19-69

30% Off
The Regular Retail Price On All Polaroid Sunglasses
Limit 1
East Lansing Store Only
Expires After 4-19-69

1.00
Wet Look Thigh Hi Spring Colors
49¢
Limit 3
East Lansing Store Only
Expires After 4-19-69

STATE DISCOUNT
307 East Grand River

Sheer Beauty

Breeze through the summer with black/brown/white print dress with bra to match underneath a sheer bodice. **\$19**

Be as fresh as a spring day in a pastel blue/green/white flower print--feminine softness. **\$23**

Wanda Hancock

203 East Grand River
Open Wednesdays 9:30 to 9

Natural skin 'in' for beauty

By CYNTHIA NEAL
State News Staff Writer

The secret of high fashion beauty in spring 1969 is not to be found in false eyelashes, finger curls or exquisite stage makeup.

The secret is all-encompassing from the woman's hairline to her finger tips to the bottoms of her feet. It focuses on 100 per cent of her body.

This spring the skin is real-

ly the thing. This is not a well hidden secret since today's fashions expose all parts of the body. However, it is no longer important to have that certain nose, or one particular shade of skin or unobtrusive collar bones. The beauty password is a common philosophy, best stated at "Do your own thing."

The woman's individuality is emphasized by make-up combinations selected especially for her, light skin or dark, rosy or tawny. The old fashion cover-up is replaced by the new fashion make-up which enhances the personality, bringing out natural beauty.

Some young women, especially college coeds, tend to avoid make-up because they feel it makes them look unnatural. The unnatural look is usually the result of incompatible make-up and skin combinations, which give the face a caky or flaky

appearance.

Incompatibility can be avoided by carefully selecting personal beauty aids, especially this spring since special formulas for all types of complexions are on the market.

The healthy glow of a sunburned face may enhance the appearance for a few days, but spring break sun worshippers generally agree that the itching, flaking and peeling lasts a lot longer and looks much worse.

Another form of protection is the make-up base which should be used even if the complexion is not blemished to maintain the moisture balance in the skin. A good base often acts as a sun screen and retards burning and drying.

Eye shadow delight

Another painful condition resulting from over-exposure is sunburned eyelids. Falling

asleep on the beach or by the pool exposes this extremely sensitive skin to the rays. The eyelids tend to burn more quickly than other parts of the body. Eye shadow is not only an attractive but a very effective protection for the eyelids and somewhat safer than creams or lotions.

Basically, shades of gray and brown eye shadow are preferred during the day, reserving bright colors for the evening. However, this is not a rule and a colorful personality may call for colorful eyelids anytime of the day. A woman's personality determines appropriate make-up.

Because the shade of the skin tends to change with the seasons, a woman usually needs two make-up bases of slightly different tints for the winter and summer months.

Even the slightest exposure to the sun when it is high in the summer darkens the skin and can make the winter base appear unnatural.

Some women also favor a further distinction between daytime and evening bases. These women use natural tones during the daytime, and lighter, brighter, more silvery tones in the evening.

Spring lipsticks follow the "natural" trend of transparent lip color barely tinting the lips pink, coral, peach, orange, copper or any other shade which accents spring colors. Some lip colors add highlights of silver, pearl or bronze for a more glittery appearance.

Handy beauty

Another point of beauty is the hand whose fashion significance is emphasized this year. Finger jewels, wrist bands and billowy sleeves catch an admirer's eye, but only a soft, smooth well groomed hand will hold his attention. Meticulous care right down to a woman's fingertips says a lot about how she feels about being a woman.

On the market this spring are several hand creams and lotions formulated for particular types of skin. These should be used as often as necessary to avoid any kind of drying or roughness.

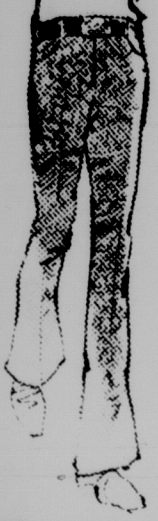
Cuticle creams help soften dry, stubborn cuticles keeping them supple instead of scratchy, while loosening dead skin.

As a final touch to a beautiful hand, nail enamels offer a wide range of high fashion colors. Like lipsticks, these enamels feature a shimmering water-like transparency in shining pastel shades.

Friction creams constitute a large part of "back-stage" beauty aids. These creams are gentle abrasives which can be rubbed into elbows, knees or heels, making dry skin flake away.

The follow-up on this treatment is a softening cream to prevent recurrence of this condition.

Being beautiful this spring is more than having the "right" shade of skin, or the "right" color eyeshadow or the "right" tint of lipstick. It means naturally glowing, healthy skin, uncovered and smooth. It means a very personal combination of make-up which enhances the personality, making a woman truly beautiful.



THE Look IS
Bellbottoms
\$6.00

Campus Western Wear
211 Evergreen -- Behind Gibson's Bookstore



"In Step"
with
Spring's
Newest
Fashions
from
Greens
East Lansing

a. acetate jersey shirt in Navy with wide collar and cuffs 10.00
b. wide-wide flare leg pant, striped with print sash 16.00
c. midriff top and slack set in black and white printed voile 23.00
d. pin striped black and white bolero in stretch knit 12.00
e. matching slacks with slightly flared leg 26.00

FORMAL REVOLUTION

Stylish males don rainbow 'tux'

By RICH BERNARD
State News Staff Writer

If current trends in men's formal wear continue, the era of the beautiful blushing bride with the bridegroom fading into the woodwork may be past.

Whether the occasion is a spring wedding or a formal dinner, the fashion-conscious male may bedeck himself in styles ranging from an imported green Swiss air stroller jacket to the new high collar Edwardian.

Although the time of the year or the weather no longer have much effect on what men choose in formal wear, pastels are more popular in spring. This preference may be attributed to the ease in which men's dinner jackets may be matched with women's dresses.

Double-breasted coats are stronger this year, as is the trend towards ruffled and lace shirts and detachable accessories. Vests often replace the traditional cummerbund in

complimenting the grey-striped trousers of daytime wear or the black trousers with the black satin stripe of evening tuxedos.

Semi-formal wear includes the common fold-down shirt collar, bow or four-in-hand tie and the stroller jacket. Formal wear is differentiated from semi-formal wear by the winged "stand-

up" collar, ascot tie and tails.

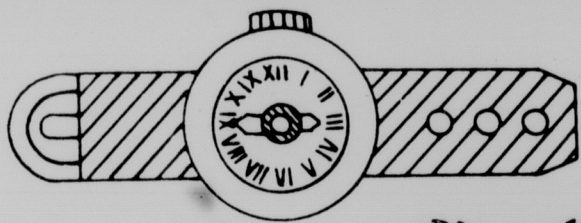
Evening formal wear may be distinguished from the before 6 p.m. styles by the white vest and bow tie and full-dress tails.

Wedding parties often choose to have the bridegroom in a tux of higher style and different color than that of the groomsmen. Dresses of the bridesmaids are sometimes

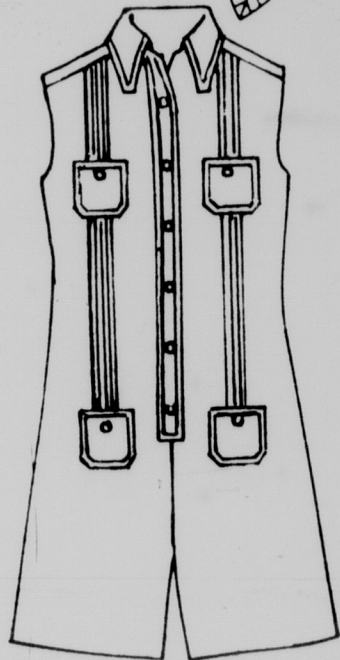
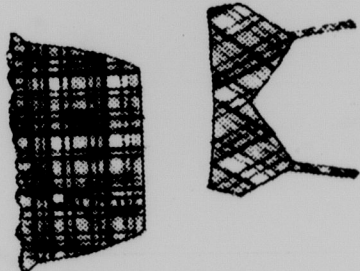
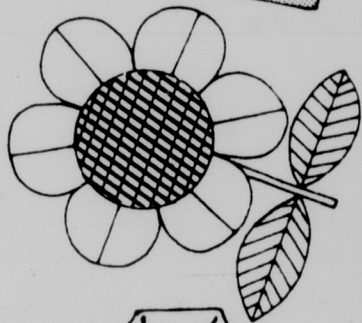
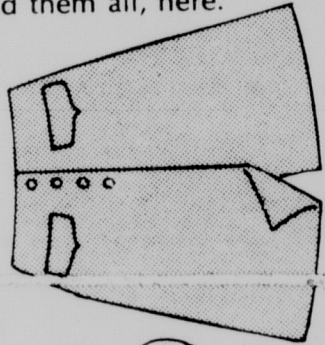
matched or complimented by the bridegroom's jacket choice.

The typical \$10 to \$20 rental spectrum is matched by a style and color rainbow ranging from traditional whites and continental blacks through powder blues, pinstripes and burgundies to the latest and most expensive styles, the Edwardian.

VACATION TIME



Take along swimsuits and dresses and pant dresses and tops and skirts from THE VILLAGER®. You'll find them all, here.



Maurice's
Scotch House

313 E. Grand River
East Lansing

Lett's

for fashions of distinction



Lett's fashions

Corner of
Ottawa and N. Butler

Take the E. Lansing
Bus Straight to Lett's

Have you been
to Lett's?

It's the most
exciting fashion
store in the city.

EMPIRE WAIST TYPICAL

Victorian styles, pastels lead romance to gowns

By **BECKY NIETERT**
State News Staff Writer

Victorian styles, long veils and empire waists are just three characteristics of the "typical" bridal fashions chosen by brides-to-be this spring.

The Victorian -- style wedding gown is characterized by a high collar, long bishop sleeves, empire waist and A-line shape. It gives a soft, romantic image to the wearer. But more traditional styles are still very popular with spring and summer brides.

Pink, blue and yellow trims on wedding gowns have become very popular with today's bride. Usually the trim is colored ribbon and may edge the dress, veil or both.

Wedding gowns in pastel shades have also been popular with brides-to-be. Pink has been the most popular pastel shade sold, but wedding gowns are also available in blue and yellow.

White and candlelight ivory are still the most popular shades for wedding gowns. White is the most often chosen of the two, although candlelight ivory is becoming increasingly popular with this year's bride.

Alencon and Venise lace are the two most popular laces found on wedding gowns and veils. Venise lace is a very heavy lace and comes in many different patterns, including daisies and roses. Alencon lace is a very fine French lace which is re-embroidered around the edges to make it stand out from the dress itself. It is found on the more expensive wedding dresses.

Rose point and Chantilly laces are also used on wedding gowns. Both of these are somewhat like Alencon lace but they are not as fine and are found on less expensive wedding gowns. These laces are also used on bridesmaids' dresses.

Although the elbow-length veil is still the most popular, the floor-length veil is becoming increasingly popular. Often it can double as a train if the bride wishes to use it as one.

Manillas have neither increased nor decreased in popularity over the year. These are worn without any headpiece attached to them and are usually edged with the same lace that is used on the wedding gown. Mantillas are popular in both the elbow length and the floor length.

Both veils and mantillas often are made of lace that makes a silk illusion effect.

Headpieces to which the veils attach vary greatly this year. Some achieve a face framing effect by rimming the face with ribbons or flowers. Other headpieces are worn at the front of the head. Little caps are worn at the back of the head.

Fabrics for spring and sum-

mer wedding gowns include the frequently used silk organza and chiffon. Linen is becoming very popular, especially for garden weddings.

An increasingly popular trend is continuity in the wedding as far as dress is concerned. This means that both the bride's and bridesmaids' dresses are of the same style and cut, with little difference between the two. This helps carry out a fashion theme such as a Victorian theme or gypsy theme.

The average bride chooses pastel colors for her bridesmaids' dresses, with yellow the most popular color.

Dotted swiss is becoming a very popular fabric for bridesmaids' dresses.

Popular headpieces for the bridesmaids' include wide picture hats and open crowns of flowers and ribbons. Ribbons are found on many headpieces this spring.

Many different looks in wedding dress have been designed for this spring to get away from the traditional look in weddings and put some excitement and color into bridal fashions.

A popular trend in wedding fashions this year is the gypsy look.

The bride's dress usually has a long billowy skirt, puffy long sleeves and embroidery around the neck. The neckline and end of the sleeves often close with a drawstring. Other characteristics of the gypsy look include a high neck, bolero jackets, and apron effect and bits of rickrack trim.

Gypsy-style bridesmaids' dresses are styled very much like those of the bride. Colors are very bright. The dresses may be bright flowered prints, checks or plaids. Usually they are sashed at the waist and have long billowy skirts trimmed with rickrack.

Babushkas are popular headpieces and carry out the gypsy theme, as do small caps in

bright colors trimmed with ribbon and small veils.

Another style being shown this spring stems from the movie "Romeo and Juliet." This style is characterized by organza fabric, a tiny bodice and a high dirndl skirt, bit ballon sleeves with long, tight fitting cuffs and a bib effect with the yoke.

Headpieces for this style are often small open pillbox shaped hats, worn far back on the head. The veil is attached either to the hat or through the opening in the hat. This dress and headpiece are designed to achieve the romantic look.

Designers are also featuring tunics plus pants for the bridal costume. They are usually used for informal or garden weddings. The tunics are usually of organza and trimmed with flower embroidery and are empire waisted. Slacks are wide-bottomed and embroidered with flowers.

Spring wedding fashions are diversified to meet each bride's tastes and let her pick her own special look for that very important day in her life.



Here comes the bride. . .

This silk organza gown by Alfred Angelo features an empire waist, short lace sleeves and a detachable train. The dress is trimmed with re-embroid-

State News photo by Bob Ivins

Safaris, capesto set pace in variety of pleasing coats

By **CYNTHIA NEAL**
State News Staff Writer

Spring coats this year are far more imaginative than ever before in fashion history.

Their drab, utilitarian appearance has been replaced by a high fashion look that compliments a spring wardrobe rather than deadening it.

Although the classic trench-coats and belted "spy coats" are all-time favorites, there is a greater trend toward variety in coats for spring '69. A new and most versatile coat has been introduced, the safari coat. This style is belted and has two breast pockets and hip pockets.

In the area of dress coats a vast selection exists this year. Women can choose the style that best suits their spirit or wardrobe.

If a woman is feeling ultra-feminine this spring, she can choose her spring coat from those with a fitted bodice and flared or bell-shaped skirt. While the neutrals, beige and gray, are always good because "they can be worn with anything." Bold colors characterize new spring coats, making them not just a fashion accent but a fashion feature.

A fashion pacesetter may choose one of the new cape styles which range from very narrow to a very full flare. Rain capes made out of plastic are not only practical but also fashionable now.

The double breasted coat and the wrap around look with side buttons are other examples of the variety of styles that are setting the fashion trend this spring.

Fashion fabrics include the traditional flannel and wool, adding a cotton and nylon canvas and the new cire. Cire is a lightweight, all-weather nylon.

Slips go pastel

Lingerie in pastel shades is very popular this spring, with the big news in bra and chemise slips.

The slips come in mini-lengths, with yellow, blue, green and wild colored prints as the most popular color choices.

of dress this year, fashion handbooks do not dictate one special look which is bound to dissatisfy many women. Instead, designers offer a variety of looks one of which is sure to please any woman's taste.

Time to 'watch' shoes, wrist wear

Shape is a key word for today's shoes and watches for men.

The watch for the fashion conscious male is rugged and unique in design. Day-date watches with nylon rope bands are being sported for spring. Calendar watches with a wood-colored dial and mesh bracelet are becoming increasingly popular on college campuses. Durable hand-crafted leather bands are presently the most popular male wrist wear at MSU, however.

Campus shoes are casual and comfortable. The nubby textured leather boot with side strap that has taken the campus by storm since fall will still stay on the campus's Number One list. Take a blunt-round toe shoe in burnt amber and add a dash of brass with a buckle or a strap and you have got the top fashion in casual loafers.

The dress shoe is uniquely 1969. Chunky but light, the dress shoe is coordinated with the entire suit through gold colors.

The quiet step of the "Edwardian" slip on with its subtly squared toe, high ankle and muted color also leads the dress category.

Next-to-nothing bikinis create big splash on girlwatcher's row

Splash into this year's fashion in bathing suits that emphasize the slim figure and narrow waistline.

Most popular among East Lansing stores is the next-to-nothing bikini in vivid colors that command attention.

Ruffles, lace and cotton piping trim these "least you can wear" suits with thin straps and low bodices.

Also fashionable is the ever-popular, brightly-colored scarf tied snugly around the hipline.

New styles in the traditional one-piece swimsuit will please those not-so-daring sunbathers.

Swimknit suits of orlon feature cut-outs on the front and sides. Op-art cut-outs that bare the midriff pose unique ideas in suntanning.

Even more coverage is offered by the swimdress with scoops and scallops at the bodice and hemline. The belted bodice of these floral print cotton suits is eye-catching and comfortable.

A breakthrough in swimsuit style is the leather suit of swimable DuPont nylon. These suits look and feel like leather, but are safe for swimming and dry quickly.

Paris fashion: flair and flow

By SUE REBECK
State News Staff Writer

Curved lines which flair into bouncy hems and wider cuffs accent the Paris fashions 1969.

After 6 p.m. the streets of Paris are filled with young women in silky pants, tunic jackets, harlequin prints and flowing cover-ups.

Suits boast longer jackets with slim, back-vents and the tiniest hint of pleat in the shirt. Pleats are light, flipping or flatbox, flaring and bouncing.

Cardigan necklines accent all styles and buttons are plainer. Pockets are subtle and few, tabs have replaced pockets wherever possible.

Belts connect the body and the skirt with leather thongs

and displaced chains that expand from hip to midriff.

Jewelry is metallic and barbaric with the heavy, forged look. Huge collars top the trimmest dresses with a hint of the slave days.

Hair is worn naturally but new trends top the daring. The "egg-head" pulls the hair tightly back to a coil which doubles at the nape of the neck. Chignons are big in Paris and falls are worn long, longer and longest.

The bird of Paradise will be prominent on the Parisian dance floor as women find that the eloquence and femininity of flowing chiffons offer luxurious freedom. Clinging crepes of inky dark colors will slink in the shadows of Notre Dame, projecting delic-

ious silhouettes by the waters of the Seine.

Silk patchworks and kaleidoscope abstracts will pattern dresses worn in the late evening.

Yves Saint Laurent, known as Y in Parisian circles, accents the young figure with freshness and femininity.

Y's pants, offering wide, three-inch waist bands, tuck in the front and end at the ankle in turned cuffs. Y has designed slinky, undershirt-type dresses that are so light and supple that they are easily rolled into the tiniest package. These slim-line dresses with U-necks are worn with the no-bra look and sometimes cover sleek pants for an eloquent tunic effect.

For evening Y has created long sleek gowns in the most basic black. Usually with long silk ties and fringed ends, Y adds a hint of glimmer with gold coils that combine with the ties. Some gowns include long crepe blazers that give a jacketed effect.

For evening, Dior uses wide wing-sleeves of fine crepe and flowing ribboning. Dior covers most of his dresses with elegant shawls with heavy silken fringes. Underneath, Dior brings out femininity with the most slender satin dress with a halter neck and ribbon bow. Backs are usually bare to the waist.

In coat fashion, Dior has created the belted, double-breasted look that can be slung over sharp culottes and connected with buttons to a ribbed under sweater.

Ricci invented the mammoth coat that uses round curves and huge collars to turn up

and frame the face. A chic belt is used to gather some of the fullness of the coat.

For evening Ricci uses a low waist and large sash that balloons to the floor to give a young, flowing look. A cardigan neck tops off a wide skirt that extends from the top of the hip and ends in inverted pleats and feathery fringe.

Patou, who also excels in evening styles, designed the short evening layers. The ruffles are lifted upward toward the face and end in a large rose.

Givenchy covers a high neck with a pointed scarf jacket that hugs the shoulders and blossoms into row of flowers and feathers at the top of the chest.

Givenchy has gone to the beach with huge bloomers that slink in black. Cover-ups are featured in materials from silk to voile and bell at the sleeves.

Courreges has designed playful jumpsuits that bib at the collar. His clothes bounce and cling and suddenly flair. Topping the noggin, Courreges has designed doll-like wigs in exotic colors of blue, yellow, green, orange and pink.

His zipcoat dresses that boast bold bands of contrasting shades, scoop at the neck and turn baby-doll at the sleeves. Courreges uses button tabs high on pants instead of pockets.

Cardin uses the bias cut to add curve to a long bodice. His skirts bell gently from the belt which ovals around the waist.

Surrealistic in nature, Cardin's evening look expresses



Evening wear

Versatility in evening wear is found in this tun-ic worn over wide-legged pants. State News photo by Norm Payea

itself with the metal trend. Chrome bicycle chains accent white bodices that meet contrasting shirts in crescent or odd shaped curves. Slits reach thigh high and give a more feminine look.

Women snatch male hat styles, don wide-brimmed toppers

Spring hats are being worn with pantsuits and separate slacks.

The modified version of the Dobbs hat for men, made of refined straw and ribbons and worn gently on top of the head, complements the pantsuit.

Another is the wide-brimmed straw or felt hat which also serves as a sun hat.

Scarf hats, tied apache style or as a turban, are holding their traditional appeal for

spring pant fashions.

Day town hats of knit or pique are popular in two styles for spring.

A small beret, made of light felt or straw and set to one side of the head, is appropriate.

The Breton, similar to an old-fashioned sailor hat with a flipped-up brim and accented with flowers and ribbons, is also previewed for spring day town wear.

The crocheted hats of open yarn or ribbon will continue being worn by the younger set with pants and minis. Popular in pastel shades, these hats are worn covering all the hair or in a beret fashion.

Spring swingers don body jewelry

The ancient art of body jewelry as shown on European statues and frescoes of Crete have been adapted and adopted by spring fashion designers.

Chain vests and breast plates, the most unique of the ancient designs, originate out of New York and Detroit and are priced from \$50-70.

Lightweight crystal connected by silver chains is one variation of the breast plate.

The metal, jewel-studded bras can be worn alone with floppy lounging pants or under see-through and waistline-plunge dresses.

The metal vest which generally is styled with an amber or plum stone can double as a cape when certain chains cover the arms.

The most expensive antique wear are large jeweled shields which extend from neckline to waist and sell for \$150.

Giant rings ranging from \$3-4 with antique scrolled motifs and large stones can be matched with head bands worn in Indian maiden fashion.

The slave bracelet, priced at \$12, is a bracelet connected by chains over the hand to three finger rings.

The most recently designed leg bracelets are slung around the hips and run down the leg to fasten above the knee. The antique gold and jeweled leg bracelet is best worn over wide-legged and bell trousers. It sells for \$18.

By CYNTHIA NEAL
State News Staff Writer

"Anything goes" describes the fashion trend of spring evening wear in 1969 where every style from men's pants to gypsy flounces pervade the "after 6" party scene.

The basic black pantsuit is a feminine version of the gentleman's tuxedo. A white ruffled shirt worn with the suit breaks the hard masculine lines and creates a striking contrast for the non-conformist woman.

Other versions of evening pants include flared feminine trousers topped by a belted tunic. Very sheer fabrics make some wide-legged pants hardly distinguishable from long skirts and are most attractive when accompanied by a matching top with shirred neckline and billowing sleeves.

A certain amount of old world influence is evident in formal and semi-formal fashions this spring. The Greek-inspired evening gown brings back the long flowing, flattering lines of the toga, fitted in the bodice by criss-crossing ribbons.

Billowing sleeves gathered at the wrist in long cuffs, and ruffle or lace trimmed gowns are reminiscent of the Victorian era when fashions reached the height of femininity.

The Spanish tradition has in-

filtrated the fashion world this year with the jeweled bolero. This short, unbuttoned Spanish version of the vest can be worn with evening pants, long full skirts and even over gowns.

Some designers have been struck by wild and wandering inclinations which brought gypsy styles to the pages of high fashion magazines. Full, flounced and boldly colored skirts enhance a carefree spirit, while fringed shawls ward off the chills of a spring evening.

The antithesis of Old World fashions is rising in popularity

Men's cosmetics

Although men may not be powdering their wigs today and certainly only a few are using rouge, a boom in grooming products began five years ago.

It is estimated that \$580 million was spent on grooming items for men in 1967. Approximately \$750 million was the projected figure for 1970.

Cornering a larger share of the market of once-frowned-upon male grooming aides are skin creams, tanning gels, hair sprays and lip pomade.

Industrial sources are reportedly confident in their claim that better than 50 percent of the cosmetic customers are men buying for themselves.

this year. Bare backs, bare shoulders, bare midriffs and waist plunging necklines are a bold step in evening fashions. Women who are not quite ready for this daring look can approximate it in gowns with sheer lace panels or chiffon for a slightly modest cover-up.

The spring fashion fabrics

Afro look allows freedom in daishiki, lappas, abas designs

The slogan "black is beautiful" can increasingly be applied to the fashion scene as Afro-American garb comes to campuses across the country.

Both black and white students are beginning to incorporate the African styles into their American dress.

For summer, the daishiki will be a popular item. The daishiki is a long flowing top with a square or V-neck. It features bell sleeves and large, bright prints. The daishiki is usually worn by men but, in modified version, can be worn by women over this spring's popular, wide-legged trousers.

Another item typical of Afro garb is the lappas. This garment is a long, rectangular piece of cloth which is draped

include crepe, printed silk, chiffon, lace and organdy. These are flounced, tiered, gathered, ruffled and even "petaled" on mini-gowns for a full flowered effect.

The fashion key in evening wear this year is individuality and variety. You can "do your own thing" and still be in style.

over one shoulder wrapped around the body and secured. It is designed for maximum freedom in arm movement.

A third item of interest in Afro-American dress is the abas. Made from one piece of material and cut narrow at the bottom and wide at the top, the abas generally comes in prints with geometrical designs.

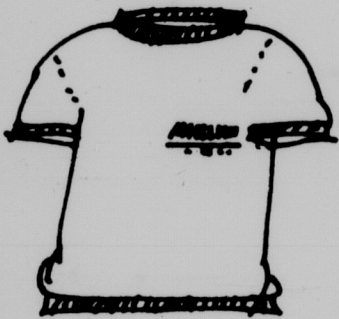
The Afro style is characterized by free flowing material without an excess of seams, darts and hems. Bell sleeves are also common for this style of dress.

Though the clothes are distinctively African, they are not uncommonly combined with such popular American styles as the turtleneck and sandals.

Anything goes for dates

IN THE TRUE FASHION. . .

SPARTAN SPIRIT SHOP



Spring term is fashion term
the better you look, the better
you feel. We have devoted an
entire shop for the purpose of
making you feel better!

Stop in at the Fashion shop
(Spartan Spirit Shop) and start to
feel better. We have MSU Sweat-
shirts, T-shirts, Sweater shirts,
Jackets, Sweaters, MSU jewelry,
and of course, The Official MSU
Class Ring- - a must for every
wardrobe.

Spartan Spirit
Shop Hours
Bookstore Hours
Monday-Friday
8:30 to 5:30

MSU

BOOKSTORE

In The Center For International Programs

Colors, patterns 'in' for men

By DENISE FORTNER
State News Staff Writer

The controversial new trends in men's attire for the upcoming sunny season include voile shirts, bell bottom pants, double-breasted jackets and neck scarves.

Shaped suits and sports jackets will sport a belt in the mid-section. Body contour shirts and pullover sweaters will be belted also. Longer double-breasted, Edwardian-style jackets with winged and wider collars and deep center vents will continue to influence the spring scene. But the new looks, such as a white cardigan, no-button suit or dark two button chalk stripe with angled pockets are coming into full force.

Spring-weight slacks will be worn in a varied array of patterns and hues; bold prints and multicolored stripes and plaids in seersucker will come on strongest but there will be more conservative small patterned gingham and narrow stripes.

Michigan State campus can expect an abundance of bell-bottoms this spring. Styles go from 17 inches at the knee to 21 inches at the ankle.

Fashion leaders are stepping up their appearance in voile, crepe and silk see-through supershirts worn with silk neck scarves. Contrasting styles are replacing coordinating styles this season—for example, a salmon shirt with green pants and a neck square tied at the side. Another example is a rayon crepe supershirt with balloon sleeves that opens at the neck and tucks into herr-

ingbone slacks with flared leg bottoms.

Benjamin Raskind, president of F. Jacobson, the division of Kayser-Roth that makes Ex-cello and Jayson shirts, predicts that the new trend in men's fashion is here to stay.

Raskind said that men are still going to wear traditional styles because they're not going to throw out last year's clothes. But sales reports for this year indicate that the new trend may be more than a passing fad. Eight years ago 90 per cent of the shirt sales were for white and soft blue colors. Last year only one third of the nation's shirt sales were in the white category.

The trend is rapidly evolving from the light colored shirt to the darker, brighter shirt in an array of patterns.

The whole story for the spring and summer shirt is not only in colors and patterns. The shirt style is also going through a "revolutionary change."

It is indeed the longer point collar with the higher band in back, that will be the trend setter. The fashionable collar will be about 3 1/2" long; the best selling collar will be about 1/2" shorter than that.

The bigger collar has been dictated by the bigger tie and neck scarves that are a current fashion.

The button-down collar is no longer popular and is being replaced with a longer collar that comes straight down so it can be worn with or without a collar pin. And French cuffs are coming back.

Other major news in shirts involves neither color nor collar, but contour. The shaped shirt has hit the collage campus. Curved seams run from the shoulder to the bottom, front

and back. These give the man a look of broader shoulders and a slimmer waist.

Bold, daring and dashing styles are 'in' but Rupert Lycett-Green, founder of one

of London's foremost tailoring firms, said, "Clothes should never be overwhelming, they should never be more important than you are. Otherwise you are just a facade."

Spring

is a
mood
at



Paraphernalia[®]

541 EAST GRAND RIVER AVENUE
Hours: Mon.-Fri., 10-9; Sat., 10-6



Color keynote in men's jackets leaves rainbow embarrassed

By RICH BERNARD
State News Staff Writer

"Color" will be the keynote in men's jackets and windbreakers found on golf courses and at baseball season opens this spring.

Newest of the outer garments which make up the recent generation of synthetic fabric offerings is a pull-over nylon outer shirt which is designed to be tucked into the trousers.

Offered in a variety of colors which would leave a rainbow embarrassed, this inexpensive windbreaker-like shirt may be worn as a shirt or as a jacket over turtlenecks or casual shirts.

The less innovative windbreaker of recent years will remain popular in its pull-over or jacket forms, with a variety of options in color, hood or collar choice and golf or hand pocket preference.

A hold-over from a very successful fall debut is the two- or four-pocket bush (or safari) jacket. Corduroy, leather or wool styles offer removable cotton linings, belts and double-breasted collars.

Serving much of the same market is the Norfolk jacket, characterized by sewn over-folds which run parallel to the zipper. This style joins the many traditional offerings of basic spring jackets in blues,

greys, tans, rusts, beiges and whites.

The light-weight tennis jacket in traditional white color with red and blue trim promises to remain popular. Poplin jackets, updated in collar and waist styling, will reappear primarily in pastels.

One last innovation in light jackets is an oyster or tan western jacket. Two high, long pockets and a change from snaps to buttons update this light canvas jacket.

The traditional year-round three-quarter or full length trench coat and topcoat have little new to offer in their frequent double-breasted, six-button stylings. The recent tendency among men to utilize the topcoat as both a carcoat and raincoat seems to be offset by the trend to wardrobe expansion brought on by increased male fashion consciousness.

The one exception to the depth of innovation in the area of coats this season is the 12-button Edwardian. Just introduced in a cornsilk color, this high-collared throwback to an earlier era hangs below the knees.

Other than colored poplin golf hats or plaid or straw sports hats, men's headwear will be scarce, as usual. Although the trend toward wooden handles on umbrellas may make them more attractive, April showers and not style will dictate their appearance.

New as Tomorrow's Bride!

Zales trousseau
of contemporary 14 karat gold bridal rings

\$475

\$325

\$295

\$105 ea.

\$195

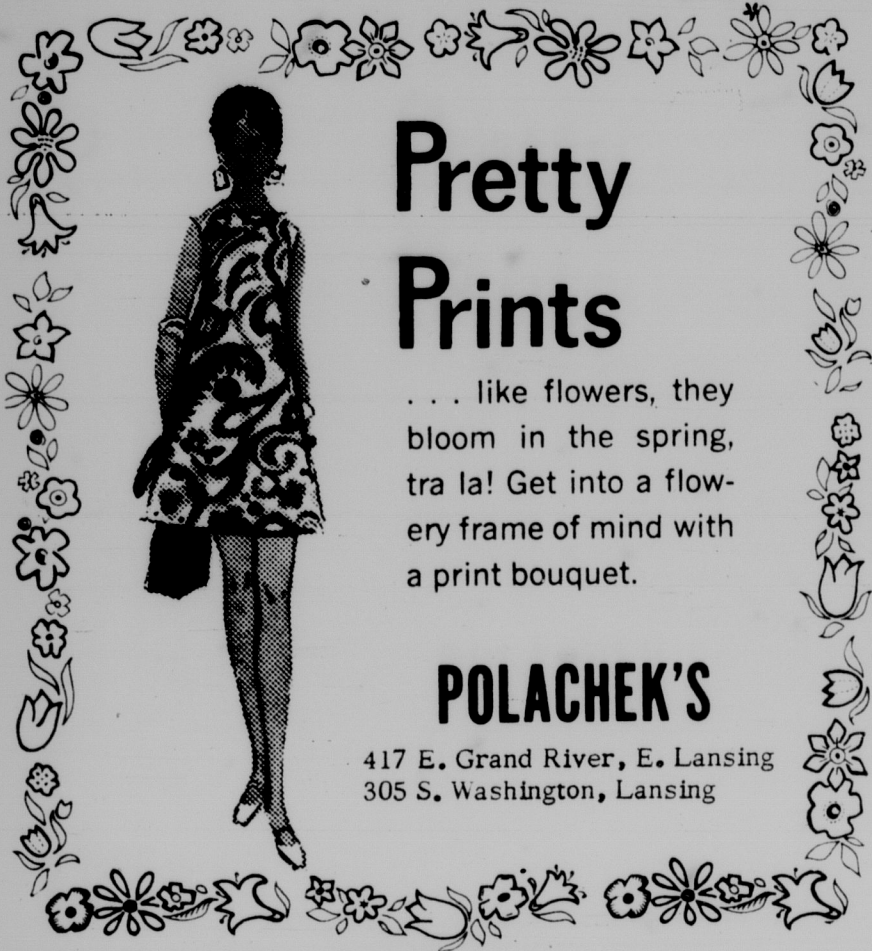
\$225

\$75 ea.

Just say "And charge it, please."

ZALES[®]
JEWELERS

207 S. Washington

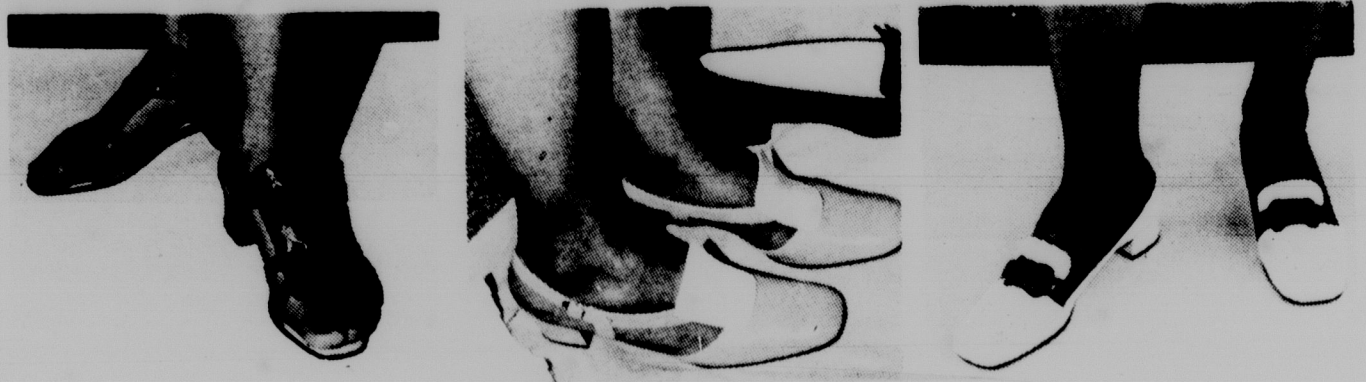


Pretty Prints

... like flowers, they bloom in the spring, tra la! Get into a flowery frame of mind with a print bouquet.

POLACHEK'S

417 E. Grand River, E. Lansing
305 S. Washington, Lansing



Footwear fashion displays leather, hardware effects

By SUE REBECK
State News Staff Writer

Hardware is the word for spring footwear fashion as daytime and evening shoes are adorned with jewelry, burnished brass and chains.

Chains are tiny and twisted, tucked unexpectedly around a stacked heel, always in just the right proportion, or extended across a broad toe.

Leathers have become richly antiqued and are combined with metal frills for an old-fashioned look. Leather combinations are the game for 1969, and contrast is the only rule.

Textured leathers are mixed with shiny patents, and dark colors accent light straps, stitching and edging. These combos include spat-type shoes and the new spectator. Spectators have contrasting sections joined with perforated leather and are usually tied at the toe.

These combos hold double fashion advantage as they may be worn with skirts or pants.

Heels are higher and not so chunky; toes start out square and round-off at the tip. Some spats button up the ankle, and shoes are generally higher on the top of the foot.

Sandals are the thing this year, and not just for the beach. The barest patent sandals accent the dressiest evening gown. Lui Somoza of Brazil has created elegant dress sandals which are more jewelry than shoe.

Thick bracelets cover bare feet with molded bands to give a fettered look. The thong sandal extends up the leg and ends in a wide space-age band.

Somoza creates the sculptured look with winged leg bracelets that incline towards greek mythology. Sandals circle

the big toe and wind up the foot to the ankle.

Evening sandals also feature straw flowers, hardware, chains and dismantines of pearl and rhinestone. Jeweled cords and tassels with flowing foot scarves decorate a plain cork sole.

Also for evening is the white kid or glace which often contrasts the heel and the pointed toe. Heels are high or low, but still more chunky than ever for evening. Satin moccasins are also chic for the 1969 dress season.

The city sandal is chunky, patent-like and usually open at the back to produce a sling effect. Open back clogs are prevalent on the boardwalk this season.

Soft playshoes have evolved from the sneaker type to the classic child's playshoe.

We're "PLUM" Excited About Our New Studio!



MSU Students ONLY
3 Day Special

Thursday - Saturday

Rose Petal Wiglet \$19.95
All Colors

Jenifer and Carol are here to give you the "straight scoop" on wigery—the latest pieces and the wisest buys.

Be sure to ask about a free Ovation Cosmetic "Maker-Over"

Men! We've got mustaches and 'burns.

College Discounts

Elegante Wigery

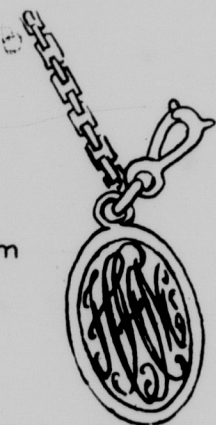
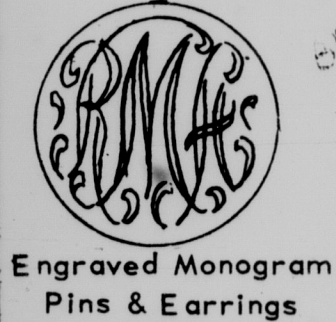


541 E. Grand River Next to Paraphernalia
332-3341

Iron G

Monogram Jewelry Is Always In Fashion

Whether Wearing Them or Giving Them... Monograms Are Truly Individual



Ideal Gifts for The Wedding Party

Iron G

Jewelry and Art Center
319 E. Grand River Ave.
East Lansing



What are the wild waves saying about all the lovely ladies on the beach? Pretty special things, and all complimentary to be sure if you're sun-and-surfing it in any of these new-as-tomorrow swimsuits. We've got styles enough to please the fussiest mermaids and fastest swimmers. You'll find everything from classic one-piecers to little boy two-piecers, all of them sleek and comfortable as a second skin. Come on in, the pickings are dandy and nicely priced.

Gittleman's

WOMEN'S SPORTSWEAR

in frandor shopping center

hours:
mon., thurs., fri. 9:30 - 9:00 p.m.
tues., wed., sat. 9:30 - 5:30 p.m.

CONTRAST LOOK

Italian designers stress tunics

By SUE REBECK
State News Staff Writer

The tunic style--cut in a manner to curve the line of the dress carefully around the body-- is very popular with the major, contemporary Italian designers.

Carosa uses the light, hand-knit look to give contrast to the line which he accents with wide dark bands and belts that rib the outfit.

Mila Schoen stresses lean,

Hosiery ushers in 'big year for legs'

This year can become the "year of the leg" when women begin to don 1969's latest styles in women's hosiery.

Colored stockings are available in the palest of pales with subtle checkers, polka-dots or flowers.

Tights are now being worn with knee-length bermudas offering a variation from the classic knee sock.

For dress, nylons have become amazingly sheer. They are coordinated and matched, but with definite white/black, dark/light contrasts.

White scrolling accents black patent shoes for a fine leg look. Geometric shapes and straight lines have changed the flowing, swirling look of past seasons.

Newest of all are the thin boots that are worn just the same as tights and nylons. These boot styles include detachable leggings and cover the shoe on the outside in a spat-like manner.

narrow lines. His long jackets emphasize bands of white which are doubled or even tripled at the collar. Sleeveless jackets are worn over sleek dresses of contrasting colors.

Biki uses lines in the form of military style stripes which span the front and the sides of the garment. Biki's cuts are narrow, bias type that accentuate the feminine figure.

Patrick de Barentzen uses an extended pant-line in suits covered with long top coats. Notched chevron-type pockets line the boyant overblouse with its gold buttons and shiny belt.

Valentino stresses the straight line that adds a quality of purity to the shape of the wearer. Valentino's sleeveless tunics vary with belts, half belts, beaded sashes and mock pockets. His trademarks being V-shaped darting, Valentino empha-

sizes the line with chevron darts that end in a tangle of pattern.

Irene Galitzina uses the horizontal line to circle the body in a sharp sweep. A tunic with a wide leather belt and mammoth golf buckle decorate the style with tassels and bells.

Elanora Garnett folds the flowing line in a sinuous fashion. Winged capes send the line to the length of the arm which is braceleted at the cuff. The bared back is another Garnett speciality.

Forquet twists the line with a cape that billows from the throat. Contrast is subdued in a ruff style collar that fastens high on the neck with a scarf.

Fabiani uses a longer line that extends clear to the toe. Stripes of vivid color join embroidered appliques, tassels and

ords to add a flowing touch.

Ruffles are big in Spanish fashion. Pertegaz dapples the bikini evening dress with con-

trasting Swiss ruffles and scallops. Sleeves are off-the-shoulder and create the bare evening look.

Simple, straight hairdos 'in' for spring; wigs, falls popular

The in-head for spring is the small head hair that is smooth and rounded whether short or long, with no inflated crowns or elaborate hairdos

Short hair for spring is straight with a rounded crown and edges, often down to the eyebrows in bangs. Short, overcropped side-parted hair with small sideburns and back feathering lower to the nape creates the Eton schoolboy look -- the latest and most popular style from Paris.

The Napoleon look has re-

turned for longer hair. A style inspired by a portrait of your Napoleon, hair is worn chin length and center-parted, with small bangs tossed to both sides.

Long hair continues to stream toward the waist. The harmony of the smooth air rounded look is achieved with long hair pulled back with pig tails looped behind the ear

At least one wig constitutes the minimum ready-to-wear hair collection for spring a summer.



that's spring!

Get into a sunny frame of mind with crisp new colors and fabrics in bright, spring dresses

Marion's Apparel

1331 E. Grand River
Brookfield Plaza 351-7224



Ladybug

Scholasticus Graduatia
Distinguished, honorable and uncomfortable. Not suitable for running on beaches.

Summa Cum Ladybug


AS SOON AS YOU GET OUT OF THAT CAP AND GOWN, SLIP INTO SOMETHING FUN. SOMETHING LADYBUG. SOMETHING COOL AND AIRY AND LIGHT WITH A DAUNTLESS GAILETY OF SPIRIT. WE HAVE THEM ALL... SHIRTS AND SLACKS AND SHORTS AND KNITS, DRESSES AND SUITS AND BLAZERS, SWIMWEAR, AND KNITWEAR AND ALL THE LINGERIE AND ACCESSORIES THEY'LL NEED!

Maurice's Scotch House

313 E. Grand River

Join the MSU Sailing Club

Meeting Tuesday, 7:30 p.m. in the Union



You don't have to be a sailor to join, but a jacket from Campus Book sure helps!

CAMPUS BOOK STORES

"Your Choice"

Across From the Union
City Parking At Rear Door

Across From Berkey Hall
Free Parking at Storeside

*new
ways
with pants*

Catch on to the new way of dressing. Pants-dressing. The long or short of it. The fit or flare of it. Pants, obviously divided or skirtingly united. This totally new spirit of freedom is invading every aspect of a gal's life. It's for day or night, for at home or away. It's for glamour occasions or play. Our new spring collection goes to all lengths in fabrics crisp or clingy, colors pale or pow. Yours to top in any way.



Knapp's Campus Center