

the State News

VOLUME 72 NUMBER 38 MONDAY, FEBRUARY 27, 1978

MICHIGAN STATE UNIVERSITY EAST LANSING, MICHIGAN 48824



It's not exactly "home on the range," but a lone buffalo does stalk the snow-covered land near

here at Fenner Arboretum, perhaps mournful of the recent loss of her mate.

State News Pete Obee

STUDENTS SEEK REFERENDUM ASMSU pay protested

By KAREN SHERIDAN
State News Staff Writer

More than 2,500 students have signed petitions calling for a referendum on a Feb. 9 ASMSU Student Board pay raise. The ASMSU president and representatives gathered to represent about three-fourths the members of the ASMSU constitution to bring the issue to a vote.

Passage by a narrow margin came despite vehement demands by board members that the proposal go before students in a referendum, or be submitted for review in a public hearing.

But while a public hearing on the issue was held by the board last week, students in attendance criticized the board for an "after-the-fact" attempt to obtain input, and unanimously called for a campus-wide vote.

According to Boonstra and East Holden Hall Vice President Valerie LaFrance, the drive was begun not only to protest payment of ASMSU members, but to reinforce students' rights to determine how their tax dollars are spent.

"Contrary to what the ASMSU board members have said, the students are involved and want to voice their opinions," LaFrance said.

"The issue here is who should make the decision — the board members or the people who pay the taxes," Boonstra added.

While Arts and Letters representative Scott Schreiber and University College representative John Furtaw held opposite positions in voting on the bill, both said they support the petition drive.

"I think it's great," commented Schreiber, who voted in favor of the bill.

"It shows that people are taking recourse instead of just sitting back and idly watching what's going on."

Furtaw, who took a stand in opposition to payment, said "If we (board members) get paid, it should be the students who decide."

Israel to continue settling in occupied land

TEL AVIV (AP) — After a long and heated debate, the Israeli Cabinet decided today to stand by its policy of settling in occupied Arab land, a practice criticized by the Carter administration.

territory, cabinet Secretary Aryeh Naor said: "We'll wait and see. There is no change in government policy," he said.

The debate, which stretched over two cabinet sessions, split the 19 ministers between those who sought to placate Washington by halting the settlement program and those who wanted to speed up construction.

In their last debate on the issue seven weeks ago, the ministers adopted a resolution to expand existing settlements in the northeastern Sinai Peninsula without building new ones. The cabinet also has decided to build three new settlements in the occupied West Bank of the Jordan River this year.

The latest decision came as Assistant Secretary of State Alfred Atherton continued his diplomatic shuttle between Egypt and Israel in an effort to revive peace talks.

Foreign Minister Moshe Dayan, who met with Atherton Saturday night, informed the cabinet of Egypt's replies to Israeli proposals for the text of a declaration of

principles to guide peace talks. Atherton said he had brought "concrete Egyptian proposals" from Cairo but he provided no details publicly.

Israel claims Egypt has hardened its position in recent weeks. Dayan said Friday that this was a result of Jordanian King Hussein's refusal to join Israeli-Egyptian

Milliken would welcome power-sharing conference

By United Press International

Gov. William G. Milliken says he would welcome a meeting with other midwest governors to draw up a regional power-sharing plan to use if the nation's coal miners reject a tentative contract agreement.

Milliken, chairperson of the National Governors Association, made the announcement in Washington during a three-day association meeting which will include sessions with President Carter and Energy Secretary James Schlesinger.

"The states have demonstrated their ability to work cooperatively in two energy crises in the past two winters," Milliken said.

"They can continue to do so and should do all they can to avoid federal control over regional energy supplies during this or any future energy shortage."

Representatives from Michigan, Ohio, Indiana and Illinois will meet during the conference to map a plan. Milliken said would "keep the power in the hands of the states."

State officials and utilities have urged Michigan residents to continue their voluntary power conservation at least until the national coal contract agreement is ratified.

"I would urge Michigan residents to continue the voluntary conservation efforts which they have instituted and which have produced a reduction in electrical usage," Milliken said.

"We cannot afford to relax our efforts until the coal supply has been reestablished."

Comments silenced at trustee meeting

By JIM SMITH
State News Staff Writer

In an unprecedented move, the MSU Board of Trustees voted 5-3 in favor of closing the public comment session of its monthly meeting Friday, prompting angry reactions from citizens and individual trustees.

The supporters of Sami Esmail, an MSU graduate student being held in Israel for alleged terrorist activities, were cut off from making their presentation to the board due to the vote.

Another group, the Women's Survival Coalition, was also silenced by the board's action. The group had planned to speak on campus safety related to assaults on women students.

No one opposed the vote more vehemently than Trustee Michael J. Smydra, D-East Lansing, who called the board's decision "a farce, a joke."

Smydra said it was unfair that people who waited two hours to give presentations would be cut off because individual trustees would be unable to attend an afternoon session.

"This is a commentary on public, open speech at Michigan State," Smydra said following the vote.

Trustee John Bruff, D-Fraser, made the motion at 11:30 a.m. because he said he could not attend an unscheduled afternoon session. Three other trustees indicated they also would be unable to attend a later session. The vote then became a choice between public comments and business agenda items because a quorum would be lacking for an afternoon meeting.

John J. Masterson, associate professor of mathematics, was seated and ready to address the board on behalf of Sami Esmail supporters when the board abruptly closed the comment session.

"I'm extremely disappointed with the board," Masterson said. He told the board he had put aside classes and research to attend the meeting which began at 10 a.m.

Outside the board's meeting room Masterson said he had planned to ask the board to approve a motion asking the U.S. State Department to give a waiver of diplomatic immunity to Mark Davidson, an embassy official who witnessed Sami Esmail's condition at the time he was allegedly mistreated by Israeli authorities.

Another scheduled speaker was the imprisoned student's brother, Basim Esmail.

Esmail was prepared to request the trustees to approve a stronger resolution on behalf of his brother. He called the board's resolution passed at its last meeting "weak."

At the last board meeting, trustees called

for a full development of the facts of the Esmail case and a prompt conclusion of it by Israel.

ASMSU Student Board President Kent Barry was ruled out of order later during the business portion of the meeting when he expressed disapproval of the decision to close.

The two Republican members of the board joined Smydra in voting against Bruff's motion.

Aubrey Radcliffe, R-East Lansing, said he was "very upset" about the board's action.

"These poor people came here prepared, gave up their time to talk to us, waited two and a half hours and then they are cut off,"

Radcliffe said. "We are supposed to be the representatives of the people."

Board Chairperson Patricia Carrigan-Strickland, D-Farmington Hills, said she supported Bruff's motion because she felt it was important to complete University business.

"The business part of the meeting was very important to those new employees who wouldn't have gotten paid if we hadn't taken care of the business items," she said.

Bruff suggested a return to Thursday evening public comment sessions.

"I regret as much as anyone not completing the public session. This is the first time we have had to cut people off," he said.

Board decides group make-up

By DAN HILBERT
State News Staff Writer

Further steps to choose the next MSU president were taken Friday by the MSU Board of Trustees.

Despite public outcry over the premature halt of the public comment session, the trustees proceeded with the business portion of their meeting, discussing organization of the presidential search and selection committee.

After a motion that added an agenda item concerning the trustee makeup of the committee, the board voted five to one to appoint Chairperson Patricia Carrigan-Strickland, D-Farmington Hills, and Vice-Chairperson John Bruff, D-Fraser, as the trustee representatives to the committee.

Trustees Michael Smydra, D-East Lansing, and Jack Stack, R-Alma, were absent from the board room when the vote was taken. Both trustees were in the hallway meeting with the press concerning their protests of an abrupt halt of the public comment session.

Aubrey Radcliffe, R-East Lansing, was the sole dissenting vote against the appointment of Carrigan-Strickland and Bruff.

"I don't like the idea of putting an item on the agenda at the last minute, and not allowing time to consider it," Radcliffe said.

He also expressed the opinion that board members should have been considered for the positions. He said he "resented" the fact that the board took the action without the presence of Smydra and Stack.

The board also voted to approve a \$15,000 budget for the search and selection committee for the purpose of secretarial services, out-of-pocket costs and travel spending.

A Dec. 1, 1978, deadline was voted for the search and selection committee concerning the submission of the recommended list of at least five candidates for the new president.

Prior to the business session, Laura Robles and Martin Selley, of Chicano Students for Progressive Action, read a prepared statement to the trustees concerning the decreasing number of Chicanos and other minorities at MSU.

They also addressed the problem of replacement for the fired Chicano counselor Jesse Gonzales in the Office of Supportive Services.

They said a discrepancy exists because the office said Gonzales was fired because his position was being eliminated, but that the University is currently advertising for someone to fill the same job from which Gonzales was fired.

The trustees reaffirmed the commitment they made to the Chicano students at the December 1977 trustees' meeting, when former MSU President Clifton R. Wharton Jr. said that a graduate student counselor would be hired for the Chicano students.

Smydra questioned the board's commitment. "Are these shallow promises?" he asked, referring to the failure to deliver on the board's promise.

Stack said the problem does not lie in the board's policy concerning the Chicano counselor position, because the policy is clearly defined, but in the mechanisms for carrying out the policy.

He faulted "middle-management persons" for the failure and said the board may have gotten to the point where "we may have to knock heads to get things to happen."

James B. Hamilton, assistant provost for special programs, said, "If we are to serve all minority students, we will have to do something very, very different than what we're doing today."

Acting President Edgar L. Harden reiterated the board's policy and said, "we must recognize the commitment we made to the Chicano students."

Coal officials contract

WASHINGTON (AP) — United Mine Workers officials began an extensive campaign Sunday to sell their proposed contract, sending 200,000 copies of the proposal to the coalfields.

The union's public relations campaign is expected to focus on radio and television ads. This year, the union is expected to focus on UMW Districts 29 and 17, in West Virginia, the home of nearly

Ex-student found dead

A 21-year-old former MSU student was found dead from a gunshot wound to the head in his East Lansing home Saturday, East Lansing police reported. Police ruled the death a suicide.

Keith Joseph Greinke, 425 Park Lane, was found dead in his bedroom at about 6:45 p.m. by his roommate Steve Guzorek, officers said.

Guzorek, an MSU junior, told police Greinke returned home from his job at the Meijer warehouse on U.S. 27 at 3 p.m. Saturday and went upstairs to his bedroom. Greinke was not seen again until Guzorek found him over three hours later, police said. Officers believe Guzorek did not hear the gunshot since a stereo was playing and Greinke's door was closed.

Police said they found no suicide note nor any other indication that Greinke would kill himself. Greinke died of a self-inflicted wound from a 12-gauge shotgun, police said, which was found discharged in his bedroom.

Greinke lived at 582 West Akers Hall during the 1976-1977 school year when he was a freshman. Police said Greinke was not a student at the time of his death. Greinke was formerly a resident of Montague, Mich.

monday
bulletin

Women gymnasts almost upset Clarion State of Pennsylvania.
MSU 145 - Clarion 147.

inside

Flying hooves and flashing spurs. See page 9.

weather

A cold grey Monday morning should turn people blue today. White will fill the sky by night. Today's high: low 20s. Tonight's low: low teens.



Gandhi's party wins in southern India

NEW DELHI, India (AP) — Former Prime Minister Indira Gandhi's political fortunes rose Sunday when her new party won a decisive state election victory in southern India.

The government information office said Gandhi's wing of the recently split Congress Party captured 130 of the first 190 seats decided in the Karnataka state assembly, assuring it of a comfortable majority in the 224-member chamber and the right to form the new state government.

Karnataka was the first of five states

and one federal territory to report results from assembly elections Saturday. Counting is scheduled to begin today in the five other areas, with results expected tonight and Tuesday.

Of the 190 Karnataka races decided, Prime Minister Morarji Desai's Janata party elected 49 candidates to the assembly, minor parties and independents a total of seven and the pro-Moscow Communist Party and anti-Gandhi Congress Party two each, the central government said.

Somali forces kill 47 Ethiopians

MOGADISHU, Somalia (AP) — Somali-backed forces in southern Ethiopia killed 47 Ethiopian soldiers last week in "fierce" fighting along the Negele-Addis Ababa highway, Somalia's national news agency said Sunday.

Quoting a battlefield communique from the Somali Abo Liberation Front, it said the clashes occurred at the villages of Adola and Har-Bare and that rebels destroyed seven Ethiopian vehicles and captured large quantities of ammunition.

Additional details of the fighting were not disclosed.

The Soviet news agency Tass quoted an Ethiopian report as saying Ethiopian troops in the region repulsed an attack on the town of Kontman and that 200 enemy soldiers had been killed in fighting in the area in the past week.

Independent confirmation of battle reports by the two sides is generally not obtainable.

Marcos declines to free political opponent

MANILA, Philippines (AP) — The martial law government of President Ferdinand E. Marcos on Sunday refused for the second time to free opposition leader Benigno S. Aquino Jr. from prison long enough to campaign in April's election for an interim National Assembly.

A government statement said Aquino, a longtime Marcos opponent, claimed to be a CIA agent. His release, the statement said, could invite "plots, conspiracies and intrigues" against the security of the Philippines.

During a military trial last November on subversion and other charges, the

government accused Aquino of conspiring with the Soviet Union and China. He was convicted.

Marcos announced Sunday's decision by his National Security Council to delegates from local citizens assemblies who were meeting at the Malacanang presidential palace, the statement said.

It quoted Marcos as saying the council could not order Aquino's release because "it would be the highest form of reckless imprudence . . . as well as an outright danger to the republic" if the 45-year-old former senator were granted provincial liberty.



Park set to appear before Congress

WASHINGTON (AP) — Tongsun Park, vowing to tell the "complete truth" to Congress about alleged South Korean influence buying, arrived in Washington Sunday afternoon after being absent for a year and one-half.

Park, accompanied by Justice Department attorneys and surrounded by 20 U.S. and Korean security agents, arrived in the capital from Seattle. The trip marked the culmination of a painstaking U.S. effort to return the millionaire rice dealer to this country.

He had been scheduled to fly from Honolulu to Chicago and on to Washington. Authorities did not announce the change in flight plans until shortly before he left Honolulu for Seattle.

"I hope as a result of my giving my side of the story as well as I can recollect how things did happen, I hope things will come to a happy ending," Park said when he arrived. He refused to answer specific questions put to him by reporters at Dulles International Airport.

Governors demand strong energy policy

WASHINGTON (AP) — The nation's governors demanded Sunday that a national energy policy be devised to head off crises such as the one brought on by the current coal strike.

"Settlement of the coal strike is only a first step," said Washington Gov. Dixy Lee Ray in a television interview as the governors gathered here for their winter meeting.

"America needs a national energy policy," echoed Gov. Pierre S. dePont of Delaware, another guest on the program. He suggested that the governors

would provide "some prodding" as they opened an energy production conference with administration officials. The governors had been seeking the conference for the past year.

President is scheduled to enter the discussions this week, but other top administration officials, led by Energy Secretary James R. Schlesinger, were on the griddle Sunday. The governors concentrated on energy matters during the first day of their three-day conference.

Consumers need state help, Nader says

WASHINGTON (AP) — Ralph Nader, assessing the consumer movement after a major defeat in Congress, says it needs to turn to state and local solutions to consumer problems.

Nader said the Feb. 8 House vote against legislation to establish a federal consumer agency was only a temporary setback for him and the consumer movement.

Nader has been credited with originating the idea of a federal consumer agency. A coalition of consumer activists

and President Carter joined him in supporting the bill. Although the measure had come close to passing in earlier years, it went down to a 38-vote defeat this year, possibly killing the idea for good.

There have been suggestions from some quarters that the consumer movement and Nader's influence are waning.

"Of 20 major pieces of consumer legislation before Congress in the last 10 years, 16 have gotten through," he said in an interview last week.

Coal pact awaits miners' vote

By The Associated Press
United Mine Workers President Arnold Miller, President Carter and Labor Secretary Ray Marshall remained cautiously optimistic Sunday as a new proposal to end the nation's coal strike was being sent to the miners for ratification.

But a number of union officials in West Virginia, a key state in the ratification process, were not optimistic about the chances for adoption of the contract. Hopes of ending the 83-day-old strike dimmed even more when UMW members rejected a similar contract with the independent Pittsburg & Midway Mining Co. on Saturday.

Miners in four of the five UMW locals affected by the P&M agreement voted 357-to-163 against the proposed contract. Several of the men said they voted against the contract because they wanted to see whether the national agreement was better.

A vote scheduled today at another P&M operation is meaningless because there are only 117 miners there, not enough to change the outcome. Marshall noted Sunday that there are some technical differences between the P&M contract and the one being offered to the rest of the UMW miners, and those differences should make the general contract more attractive.

"I think our members under-

stand that in collective bargaining you don't get everything you want," Miller said. "This is a contract we can live with. It guarantees our health and pension benefits and takes a step toward speeding up the grievance procedure."

The union's 160,000 striking miners won't vote on the contract until early next week. While Miller said he does not plan to go to the coalfields and stump for the pact, hundreds of district and local UMW officials will be attempting to sell the agreement to the miners who will work under its provisions for the next three years.

A bare majority is needed for ratification.

The 130-member Bituminous Coal Operators Association has its own ratification process. Although the BCOA apparently will not announce its vote until the miners have cast their secret ballots, the mine operators are expected to approve the contract.

The contract provides for a 37-percent wage increase over the next three years, with an immediate \$1-an-hour raise. This would leave most miners' salaries at about \$80 a day by 1980, not counting overtime.

"I'm sorry to see it," said Mel Martin, a board member in District 6, which covers northern West Virginia and Ohio. "I'm not sorry to see that it's settled; it's just that we

District 6 officials know what they agreed on, and it's going to be hard to sell it to the membership."

Martin said he has based his opinions on the P&M agree-

ment. The P&M agreement "is a very inadequate contract," Martin said. "I'm not the slightest bit optimistic."

Steve Shapiro, president of a UMW local at Bishop, Va., said

he doesn't believe the proposal will solve the lems in grievance mach that made the 1974 contract unworkable and caused many wildcat strikes.



Nearly 3,000 cross country skiers move up a hill at Mt. Telemark in Cable, Wis., after the start of the American-Birkebeiner VI. The skiers covered the 55-kilometer course from Cable to Hayward.

Derailment kills eight

YOUNGSTOWN, Fla. (AP) — A freight train piled up near this Florida Panhandle community early Sunday and a ruptured tank car, spewing a cloud of deadly chlorine across a busy highway. Authorities said eight persons were killed and at least 67 were hospitalized.

"It was instant death," said Al Smith, an emergency troubleshooter for the Environmental Protection Agency from Atlanta. "The kind of death we're talking about, it literally burns your lungs up."

Automobile engines apparently stalled as the chlorine cut off the oxygen needed for combustion. Cars careened into roadside ditches. Some motorists fled into a swamp near the tracks, only to be enveloped by the searing greenish-yellow cloud.

Some of the victims lived in

nearby homes. About 47 cars and five locomotives of the 140-car freight were derailed, police said.

Russell Gober of the National

Transportation Safety said it appeared the derailment was caused by a broken wheel added that was a tentative conclusion.

Chinese may get ready for takeover of Taiwan

TOKYO (AP) — Standing beneath huge portraits of himself and Mao Tse-tung, Communist Party Chairman Hua Kuo-feng opened China's fifth National People's Congress on Sunday by urging military readiness for a takeover of Taiwan.

Hua said the 3.5 million-member People's Liberation Army "must make all the preparations necessary for the libera-

tion of Taiwan," Peking's official Hsinhua news agency reported.

Hsinhua's excerpts of Hua's three and one-half hour speech did not amplify its reference to Taiwan. He called repeatedly for the "reunification" of the island for the Nationalist Chinese who there after the Communist victory in 1949.

more effective Depa program and an auxiliary to the MSU. Being the public co-trustees also have options request an surveillance at the Stouffer, chairperson presented the concerns of the proposing an increase Stouffer said "sa working with peop community, a stronger tion could be embe movements in the ope expanded DPS ca case officers would Stouffer told the biggest plus to the between DPS and nensed and improve being fighting should

Arrested financial aide tried to help treasurer

MONTGOMERY, Ala. (AP) — The arrest of a financial adviser to state Treasurer Melba Till Allen has added a bizarre link to a chain of woes besetting the beleaguered state official, whose far-flung business dealings are under investigation by a grand jury.

The Montgomery County jury is investigating a report by the State Ethics Commission that there is "probable cause to believe" the 44-year-old treasurer violated Alabama's ethics law in her personal dealings with banks holding state deposits.

Allen decides where state funds are deposited in low interest paying accounts.

The State News is published by the students of Michigan State University every class day, during Fall, Winter and Spring school terms. Monday, Wednesday and Friday Spring Summer terms and a special Welcome Week edition is published in September. Single copies are \$30 per year. Special rates for postage and of East Lansing, Mich. Editorial and business offices at 345 Student Services Bldg., Michigan State University, East Lansing, Mich. 48824. Post Office publication number is 520260. Postmaster: Please send form 35 9 to State News, 345 Student Services Building in care of MSU Messenger Service, East Lansing, Mich. 48823.

GERALD H. COY, GENERAL MANAGER
ROBERT L. BULLARD, SALES MANAGER

PHONES
News Editorial 355-8252
Classified Ads 355-8256
Display Advertising 353-6400
Business Office 355-3447
Photographic 355-8311

CLIP AND SAVE!

Have your auto insurance rates increased?

Sentry has held the line!

CALL JEFF WILLIAMS

332-1838

401 W. Grand River East Lansing

SENTRY INSURANCE

CLIP AND SAVE!

TUESDAYS

Bluegrass Bands & Cheap Beer

AT HOBIE'S

930 Trowbridge

EAST SIDE - WEST SIDE

... WHERE ITALIAN BEEF IS BETTER THAN BURGER

LUNCH SPECIAL THIS WEEK

Italian Beef Sandwich \$1.09 with Salad (Regular 2.75)

EAST SIDE	WEST SIDE
BUONO APPETITO Authentic Italian Sandwiches & Dinners EAT HERE OR TAKEOUT 1045 E. GRAND RIVER at Ganson	Matteo's RESTAURANT ITALIAN-AMERICAN FOOD-CHICKEN (Next to Peoples Church) 136 W. GRAND RIVER

CLOSED FOR INVENTORY TUESDAY, FEBRUARY 28

OPEN AGAIN MARCH 1 Wednesday

Jacobson's

Michigan State
REGINALD TH
State News Staff W
The Black Student
association will elect
spring term.
Michael Hyter
club
also seeking more
from business s
and sophom
not yet declared
are interested in
welcome, he said.
The association was
years ago to help
these students ac
Hyter said. M
each other in
courses to take an
ing.
an active three
organization had
period last year
Since many ass
bers are graduat
the club need
bers to continue
With new offices,
more people to h
later, take ov
Many students dec
ness major when t
Trust
more effective Depa
program and an auxil
to the MSU. Being
the public co
trustees also h
options request an
surveillance at t
Stouffer, chair
person presented
concerns of the
proposing an increa
Stouffer said "sa
working with peop
community, a strong
tion could be embe
movements in the o
expanded DPS ca
case officers would
Stouffer told the
biggest plus to the
between DPS and
nensed and improve
being fighting should
Thomas, member
ance, called for the
balance activities fr
omas urged the boar
balance on this camp
Hallen residents p
a lack of administr
option request w
ancer
The Wash
Lack
from the Prov
in Lansing, will
racer program toni
presentation, en
Cancer Information
by Holden Ha
ide po
Applications for Chic
in 338 Student Se
election procedures fo
and will include int
graduate advisors.
omas students must h
more than 200
Add duties are co
students.
There are now five Ch
will be open next
information on pos
in 339 Student Se
A care
without
What can you do with
Now there is a wa
undergraduate educat
crisis. The Lawyer's
tionally done by lawye
Three months of in
skills — the courses ar
one of the seven cou
which you want to wo
Since 1970, The Ins
more than 2,000
and corporations in ov
If you are a senior o
interested in a career
to meet you.
Contact your placement
representative.
We will v
Tues
Wedne
The I
Parale
235 South 17th Street
Operate

Black business group elects officers

REGINALD THOMAS
State News Staff Writer

The Black Student Business Association will elect executive officers this spring term, current officers Michael Hyter said.

In addition, club members are seeking more involvement from business students, freshmen and sophomores who have not yet declared a major.

Association adviser Clarence Duncan of the MSU Office of Placement Services agreed with Hyter about the "weeding out" of students.

Duncan said about 50 percent of freshmen students change their major before their sophomore year, adding this generally comes from poor planning on their part.

Both Duncan and Hyter said they felt difficult classes such as mathematics, accounting and computer science were reasons for these changes. Hyter added many students leave after taking statistics.

In an attempt to combat this, Hyter says the association is presently organizing a tutorial program. The program, Hyter said, will be in conjunction with

the Office of Developmental Programs.

"We are still in the planning stage but we hope to lay down in writing what this program will be like by spring term," he said.

The tutorial program will put emphasis on courses required for business students. The main emphasis will be on accounting, statistics and economic courses, Hyter said.

Hyter said the group is now laying the ground work for a program designed to attract the attention and contributions of businesses around the state and nation.

The association recently received money from Owens Corning Fiberglass as the Minority Careers Program.

The association sponsors speakers from the business community and takes trips to visit various corporations.

Students interested in working with the Black Student Business Association can contact Hyter in Eppley Center. The association meets every other Wednesday at 6:30 in 113 Eppley Center. The group's next meeting will be Wednesday, March 1.

High schools to use 'U' program

By ANNE MARIE BIONDO
State News Staff Writer

High school students will soon be studying and analyzing current environmental problems as a result of an education project developed by the Math and Science Teaching Center at MSU.

The project, approved by the Tri-County Regional Planning Commission, addresses the environmental and political concerns of Clinton, Eaton and Ingham Counties.

Martin Hetherington, project director, said the purpose of the Environmental Education Project is to introduce regional planning to secondary school teachers in the tri-county area. Ideally, high school students will gain a better understanding of the physical, biological and political effects of certain environmental issues, Hetherington said.

Some of the issues concerning regional planning that will be presented to the 56 teachers involved in the project are land use planning, air and water quality, solid waste management and legislation affecting these issues, Hetherington explained.

Teachers participating in the project have been attending a

series of workshops on campus. Each workshop focuses on a particular topic with a speaker addressing the related issue.

Recently Rep. Lynn Jondahl spoke on the impact lobbyists have on getting environmental protection laws passed.

Phyllis Barnett, an East Lansing High School physical science teacher, said she found the land-use planning workshop informative.

Since modern-day transportation problems are being studied by her students, Barnett said that the issue of land-use planning is especially of interest in her classroom.

Ron Fowler, physical science teacher at Eaton Rapids Intermediate School, said the workshops have "opened his eyes" to the political concerns of these issues.

"We get a lot of viewpoints from Tri-County," Fowler said.

Fowler, an MSU graduate, said the workshops have also motivated him to take a more active role in the policy making on some of these important issues.

In May the final "wrap-up" workshop will be held, Hetherington said.

(continued on page 10)

Trustees hear DPS proposal

The more effective Department of Public Safety crime prevention program and an auxiliary police force for student cadets were presented to the MSU Board of Trustees Friday.

During the public comment session of the board's monthly meeting, trustees also heard Holden Hall residents discuss their options request and a person request board action to ban surveillance at MSU.

Stouffer, chairperson of the ASMSU traffic safety committee, presented the trustees with the DPS proposal outlining main concerns of the committee.

Proposing an increase of two to five crime prevention officials, Stouffer said "safety programs could be kept up to date... working with people and groups from the University community, a stronger, more uniform effort toward crime prevention could be obtained."

Improvements in emergency phones and communications on campus were also recommended by the safety report.

An expanded DPS cadet program using students to assist officers would have many benefits for the University community, Stouffer told the trustees.

The biggest plus to the program is the cooperation which could be between DPS and the students," Stouffer added.

Improved and lighting as well as better maintenance lighting should also be a major board concern, Stouffer said.

The trustees suggested a review of housing option policies and Acting MSU President Edgar L. Harden told the students, "you won't wait another few years for an answer."

ASMSU Board President Kent Barry's presentation on the State News board of directors and his suggested changes were not heard when the board ended the public comment session at 11:30 a.m. so they could complete routine business before noon.

Wanted: writers

True to its eight-year tradition, the Red Cedar Review announced the 9th Annual Creative Writing Contest. Contestants are limited to MSU students—undergrad and grad—in the fields of poetry and fiction; and they may enter as often as they want.

The deadline for all entries is March. Entries postmarked later than March 6 will be returned—unopened.

Winners will be announced April 1 with prizes of \$100, \$50, and \$25 awarded to the 1st, 2nd, and 3rd place winners in each field.

Copies of the contest rules are available in the English Department in Morrill Hall.



"Let me help you find the car you need"

Choose from a full line of new Chevrolets. We have a fine selection and a great service department to back up your purchase. Or choose from a wide variety of reconditioned used cars. I'd like to assist you in your selection.

Sincerely,

Scott R. Smith

Bud Kouts Chevrolet

2801 E. Michigan Phone 374-0900
Two Blocks West of Frandor

Thomas member of the Committee Opposed to Political

Thomas, member of the Committee Opposed to Political Activities, called for the trustees to demand a full accounting of financial activities from the DPS.

Thomas urged the board to adopt "a strong ordinance to prohibit surveillance on this campus."

Holden Hall residents presented the board with their concerns regarding a lack of administrative action regarding their particular options request which would make Holden coed by wing.

Cancer show slated

Wanda Lucker, a cancer specialist from the Provincial Hospital in Lansing, will speak at a cancer program tonight.

The presentation, entitled "Cancer Information," is being held in Holden Hall in cooperation with the Ingham County Unit of the American Cancer Society. The session will begin at 7:30 p.m. in G-8 Lecture Room in Holden Hall.

The free program is open to the public.

Aide positions open

Applications for Chicano aide positions will be accepted through March 5 in 338 Student Services Bldg.

Selection procedures for aides will take place during spring semester and will include interviews with students, administrators and graduate advisors.

Chicano aides must have a 2.0 grade point average, must be MSU students and must remain on the job the entire academic year. Aide duties are counseling and planning activities for Chicano students.

There are now five Chicano aides on campus and all aide positions will be open next year. Current aides may also reapply. Information on positions and application procedures are available in 339 Student Services Bldg.

A career in law—without law school.

What can you do with only a bachelor's degree? Now there is a way to bridge the gap between an undergraduate education and a challenging, responsible career. The Lawyer's Assistant is able to do work traditionally done by lawyers.

Three months of intensive training can give you the skills—the courses are taught by lawyers. You choose one of the seven courses offered—choose the city in which you want to work.

Since 1970, The Institute for Paralegal Training has placed more than 2,000 graduates in law firms, banks, and corporations in over 80 cities.

If you are a senior of high academic standing and are interested in a career as a Lawyer's Assistant, we'd like to meet you.

Contact your placement office for an interview with our representative.

We will visit your campus on:
Tuesday, March 7
Wednesday, March 8

The Institute for Paralegal Training

235 South 17th Street, Philadelphia, Pennsylvania 19103
(215) 732-6600
Operated by Para-Legal, Inc.

Campus Interviews for TI Equipment Group

Match your degree to our multitude of openings.
(U.S. Citizenship required)

Degrees		
Electrical Engineering	Industrial Engineering	Computer Science
Mechanical Engineering	Manufacturing Technology	(Software/Hardware)
Openings		
Engineering/Computer Software/Hardware	Digital & Logic Circuits	Systems Analysis
Radar Design	Stabilization Systems	Display Systems
Antenna Design	Environmental Systems	Manufacturing
Guidance Control Systems	Environmental Design	Project-oriented
Infrared Technology	Airborne Computers	• Manufacturing involving:
Microwave Development	Cryogenics-Heat Transfer	• Coordinating
Analog/Digital Design	Navigation Systems	• Manufacturing
PWB Engineering	Computer-Aided Design	Schedule Commitments
Product Support Engineering	& Manufacturing	• Cost-Control/Budget
Quality and Reliability Assurance	Distributed Computer System Design	Development
Process Engineering	Minicomputer Operating Systems	• Use of Real-Time Computer Systems
Human Factors Engineering	Engineering Applications	Manufacturing Supervision
Signal Processing	• Assembly, Pascal, PL-1	Assembly Methods
Acoustic Systems	Fortran on Minicomputer	Fab Methods
Logic Design	& IBM 370	Tool Design
		NC Programming

Live in Dallas.

The Southwest's largest and liveliest metropolitan area.

Discover all the glitter and glamour, spectacular sport and high fashion Dallas is famous for—yet an economical place to make a home. Cost of living is way below the urban U.S. average. And there's no state income tax. The country's 8th largest city has year-round sunshine plus lots of lakes and facilities to enjoy it. The area has 34 colleges, 102 major medical facilities, and a wealth of major media and entertainment.

Interviewing on Campus
March 6 & 7

If unable to interview at this time, send resume to: Martha Marshall/Texas Instruments/
P. O. Box 6015, M.S. 222/Dallas, Texas 75222.

TEXAS INSTRUMENTS

INCORPORATED

An equal opportunity employer M/F

STATE DISCOUNT

211 E. Grand River Ph. 337-1521
Next to the Sportsmaster

OPEN
MONDAY thru FRIDAY 9-9
SAT 9-6 SUN 12-5

LOOK
WHAT A DOLLAR
BUYS

STATE COUPON
MIX OR MATCH

2/1.00

MEASURING CUP AND SPOON SET
PLASTIC WHISK BROOM
3 PK SUCTION SOAP HOLDERS
PENTEL ROLLING WRITERS
VALUES TO 1.98 EACH

LIMIT 8 EXPIRES 3-5-78

STATE COUPON

3/1.00

WOODEN SALAD BOWLS
PAINT BRUSHES
PLASTIC COATED PLAYING CARDS
AFRIN NASAL SPRAY TRIAL

LIMIT 12 EXPIRES 3-5-78

STATE COUPON

ORLON KNIT

CAPS

2.00 Value 1.00

LIMIT 2 EXPIRES 3-5-78

STATE COUPON

OPAQUE

PANTYHOSE

=0-1 1.50 Value 1.00

LIMIT 4 EXPIRES 3-5-78

STATE COUPON

\$1.00 OFF

THERMAL UNDERWEAR
FLANNEL SHIRTS

LIMIT 6 EXPIRES 3-5-78

STATE COUPON

JERGENS LOTION 1.00

6 oz. 1.29 Value
LIMIT 1 EXPIRES 3-5-78

STATE COUPON

CREST TOOTH PASTE 1.00

7 oz. 1.61 Value
LIMIT 1 EXPIRES 3-5-78

STATE COUPON

REVLON FLEX CREME RINSE 1.00

12 oz. 1.95 Value
LIMIT 1 EXPIRES 3-5-78

STATE COUPON

BAN ROLL ON ANTIPERSPIRANT 1.00

1.3 oz. 1.30 Value
LIMIT 1 EXPIRES 3-5-78

STATE COUPON

Q TIPS 1.00

170's 1.49 Value
LIMIT 2 EXPIRES 3-5-78

STATE COUPON

SUAVE SHAMPOO 1.00

10 oz. 1.50 Value
LIMIT 1 EXPIRES 3-5-78

STATE COUPON

MASKING TAPE 2/1.00

LIMIT 4 EXPIRES 3-5-78

STATE COUPON

FOAM CUPS 2/1.00

LIMIT 2 EXPIRES 3-5-78

STATE COUPON

CIGARETTES

2/1.00

All Tax Included
All Brands

LIMIT 2 EXPIRES 3-5-78

State alcohol law should be revised

Michigan State University's alcohol policy, it has been found, violates state law. The question is: what should be done about it?



Nonnamaker: A question of liability.

sume, exchange or sell liquor in these areas. So MSU's alcohol policy is illegal.

Again: what should be done about it?

A simplistic approach to the problem would be for the University to ban these parties and restrict alcohol use to dormitory rooms, which are considered private property.

A better solution — the one we advocate — would be to change state law.

Until October 1975, the Liquor Control Commission granted 24-hour licenses to universities for alcohol use and distribution.

We advocate an expeditious change in state law. The Liquor Control Act should be amended to provide for a permanent license, subject to yearly renewal, to allow state universities to permit consumption and exchange of alcohol in the public areas of dormitories.

Changing state law might prove distasteful to some, and could be construed as condoning or even encouraging alcohol use or abuse on campus.

The only other alternative would be for MSU to change its

alcohol policy to make it accord with state law. That would be regressive and illusory.

Another gray area which must be addressed is the issue of who is liable for any injuries or damages occurring at these parties.

But this is convoluted reasoning. It can be argued that it is incumbent upon student sponsors to meet requirements of MSU's alcohol policy.

MSU Ordinance 22.05 states that "... the use of alcoholic beverages at student social events, subject to state law, is permitted in areas designated by, and with the approval of, the office of the Vice President for Student Affairs and Services."

The Student Handbook places "responsibility on the Office of the Vice President to insure the social events at which alcohol is consumed meet the conditions set forth by state law and Ordinance 22.05."

But MSU's alcohol policy accords with neither state law nor ordinance 22.05. So it seems that responsibility for any injuries or damages at a dormitory alcohol party — injuries or damages related to the event itself — rests with Vice-president for Student Affairs and Services Eldon Nonnamaker.

Nonnamaker effectively denies this. Assistant Attorney General Solomon Bienenfeld says he is uncertain whether the state would be liable.

If state law were amended to allow for alcohol parties in public areas of dormitories, then the liability would clearly fall on the student sponsors. A good policy might be to have students sign a form accepting that responsibility when they sign their dormitory contracts. However, this should take effect only after a change in state law.

Legally speaking, the current situation would seem to imply that responsibility for any injuries or damages at a dormitory alcohol party lies with MSU — specifically, Nonnamaker — and the state.

Nonnamaker, Acting President Edgar L. Harden and others should lobby the state legislature to amend the Liquor Control Act to allow for licensing of dormitory alcohol parties. Failing that, they should be prepared to accept the responsibility for what happens at these parties which will, state law notwithstanding, continue and grow.

The case against paying the Student Board

By EDWARD P. KARLINSKI

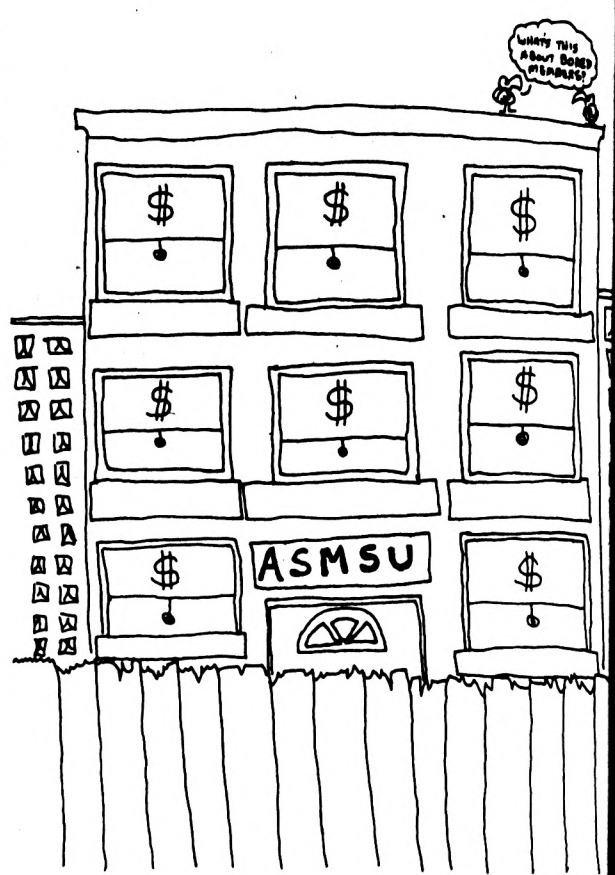
Scott Schrieber's arguments in favor of paying the ASMSU Student Board President and board representatives are among the most ludicrous yet put forth.

board are of value to the individuals involved. In this sense the board members do receive compensation, a compensation for their time and not for some mythical income foregone.

Schrieber's second major premise is that certain economically-deprived students are unable to run for the ASMSU board.

Most students on this campus come from middle and upper-middle class backgrounds. Therefore if the ASMSU board reflects this, is it not accurately reflecting the student population?

As to the argument that economics



CAMPUSWATCH

on personal gain. Therefore, it can not be rationally argued that desirable candidates necessarily require a monetary incentive to run.

The obvious question to be asked at this point is what precisely are these individuals to be compensated for? Compensation implies reimbursement for losses incurred.

Obviously it is very nice to be able to write on a resume that one has served on the student governing board of a major university.

prevent certain students from running it can be countered that the proposed ten dollars per week would in no way enable someone to achieve financial security.

Finally, let us not forget that this money is to be paid at the end of each term of service. As such it does nothing to relieve financial hardship during the term.

In concluding his arguments Schrieber asserted that no public hearing was necessary prior to the board vote since it

was the responsibility of those opposed to the bill to call for one. Are those opposed to the bill so psychically endowed that they are capable of knowing at which meeting so drastic a policy change is to be voted on without prior warning?

The action by the ASMSU board is a perfect example of underhanded politics. Regardless of one's position on the question

of monetary compensation, there can be no doubt that the devious way in which the bill was pushed through leaves much to be desired.

Letters

Fine play

I commend highly the Justin Morrill College Experimental Theater and their presentation of "The Architect and the Emperor of Assyria" by Arrabal.

It was a major feat putting to memory three hours of preposterous dialogue and actions; and unifying the whole into powerful messages, conscious and unconscious.

It is indeed unfortunate that such modern

art does not receive its just due at MSU, witnessed by the lack of a review. One can always go to plenty of plays set in complete realism; they may be superficially entertaining, but because of their reality we readily take them in without thought.

The Justin Morrill Experimental Theater therefore has an important task, and they brought it off outrageously and with vigor.

Bob Baker 518 E. Holmes Hall

There to protect

Once again, Ira Elliott has narrowed the minds of MSU. On Feb. 21, Ira said that law enforcement officers used "vulgar intimidation" to do their job.

But even more obnoxious perhaps is the white spotlight in your rearview mirror. It isn't the mirror it's shined at, however. It is the driver. Imagine yourself on a dark

Saturday night. You're a police officer you're trained in self defense, but your mind keeps flashing back to a State trooper who killed near Alpena on a traffic stop; in Detroit, just out of the hospital, paralyzed for life with a bullet in his shot on a traffic stop.

The methods used by police to protect themselves and the people stop have been forced on them by the percentage who steal cars, molest children, rape women, and shoot at beings. And by a vast majority who help when they can.

Gordon 134 Stoddard East

Instability of Shah's regime shown by killing

By THE IRANIAN STUDENTS ASSOCIATION

According to the New York Times, Feb. 20, 21, 22, a wave of mass demonstrations which shook the city of Tabriz (the second largest city of Iran) for 12 hours ended in a bloodbath.

This massacre comes only a few weeks after another bloodbath in the religious city of Ghom, where more than 70 people were machine-gunned and over 300 people were injured.

In the last few months a series of mass demonstrations unprecedented in the last 10 years, have shaken the major cities of Iran.

The dictatorial regime of the Shah, finding itself unable to provide its people with their most basic needs, resorts to the only means at its disposal to continue its rule and control: The ever-increasing oppressive measures which have always been backed by the U.S. government.

In fact, because of Iran's strategic

WORLDWATCH

location, its vast oil revenues, and the Shah's regional role of gendarming the imperialist interests in the Gulf region, different U.S. administrations have bolstered the Shah's regime through different means to keep this country's investments and markets safe.

These are but a few examples of the crimes of the Shah's regime.

The Shah's repressive measures go even beyond Iran's borders. Right now, with the cooperation of U.S. police and the F.B.I., SAVAK is waging a campaign of terror against Iranian students in the United States.

Nonetheless the struggle of Iranian people — which ranges from worker strikes for better living conditions, peasant up-

risings, student demonstrations both inside and outside the country, to the struggle of the revolutionary organizations and groups against the dictatorship of the Shah — continues and shows ever-increasing growth.

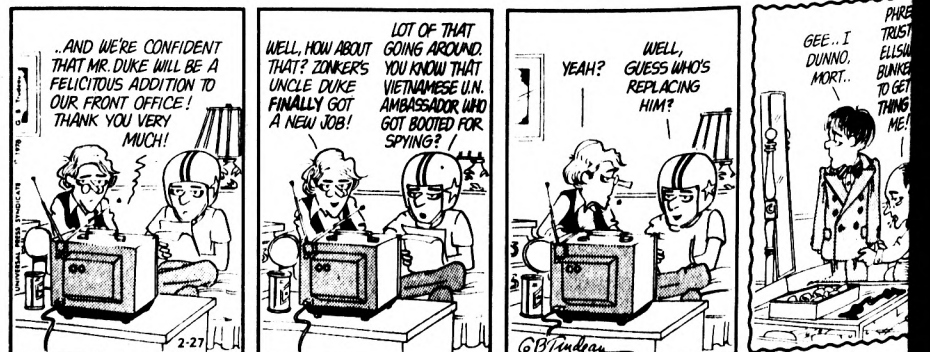
At a time when Iranian people are suffering under the most brutal and are being savagely exploited time when Iranian people are massacred in the streets of Ghom and Tabriz, Iranian students cannot be silent observers.

The ISA in East Lansing is sponsoring a rally and demonstration on March 21 noon in front of the MSU's Int'l Center.

We ask all democratic-minded loving people to support our movement by prompt participation

by Garry Tr...

DOONESBURY



LOOK CO-OP THE FASHIO

James Nixon Optometrist

The State News section containing editorial information, dates (Monday, February 27, 1978), and a list of editorial and advertising staff members.

Duo wins again in MS marathon

"You should be dancing, yeah..."
— *The Bee Gees.*

The young man in the Miller's beer T-shirt and blue gym shorts shuffled his feet from side to side, moving in time with the music.

"I'm out here for MS and that's the only reason I'm out here," he said.

His companion, a brown-haired woman wearing matching T-shirt and shorts, nodded in agreement as she, too, shuffled to the music.

Rick Young and Denise Gazzarari, winners of the MSU Dance For Strength for four years in row, won for the fifth time the 50-hour marathon this weekend at the Meridian Mall.

The two raised \$11,824 — nearly \$6000 more than last year.

And, like the man said, they did it for multiple sclerosis.

The total for the entire marathon was announced as \$35,029.98 — over \$6000 more than last year's.

Multiple sclerosis, a neurological disease afflicting the brain and spinal cord, affects an estimated 500,000 people. For five years, Delta Tau Delta fraternity, 330 N. Harrison Road, has sponsored a dance marathon to raise money to fight MS.

Young, a Sigma Chi fraternity member, and Gazzarari, a graduate student from Wonders Hall, have danced in the marathon every year.

And for Young, the fight against multiple sclerosis doesn't just last a weekend.

"I'm continually thinking about things I can do," he said at the marathon. "Even over the summer.

I'm going to do something until they find a cure."

Sunday night at 7 it was announced that the couple had won the top prize trip to Jamaica, but they won't be going. Every prize Young has won in dance marathons has been sold, with the money going to MS.

His parents, who came from Utica, Michigan, to give their support, said they still have a color TV at home they are trying to sell.

The only prizes the winners said they would keep were two \$500 scholarships to help pay for their graduate studies.

Young's parents said he has raised about \$29,000.

Young and Gazzarari weren't fancy on the dance floor. They rarely participated in the group disco dancing so popular this weekend. They had no gimmicks, except to begin and end the marathon wearing matching tuxedos. As Young said, the two were there to raise money for MS.

"A lot of people think we have a great big secret," Young said. "They think I'm backed by somebody — my fraternity or my family. Anybody who puts their minds to it could do what we've done."

The supplies they brought included extra socks, spare pairs of gym shoes, deodorant, foot pads and extra T-shirts.

After the marathon, the first thing each said they wanted was to sit down to a good meal and then get some sleep.

"We don't recover until about Thursday," Gazzarari said.

Throughout the marathon, the couple

passed out pamphlets about MS. Nearly 80 businesses were advertised in the program.

"We put this together in about two weeks," Young said. "Each gave \$25 and it helps. We raise a lot of money but we try to say thanks to everyone we can."

Though they had been dancing nearly 24 hours, Young and Gazzarari hardly looked tired Saturday night.

Neither did the other 35 couples on the floor.

Most dancers wore T-shirts and gym shorts like Gazzarari and Young — "it's the most comfortable thing to wear," Gazzarari said — and brought along a variety of supplies. However, orange juice and baby powder seemed to be the most predominant items.

Dancing ranged from simply moving back and forth to elaborate, synchronized line dances. Many onlookers recognized one line dance from the movie "Saturday Night Fever."

Many of the marathon participants weren't even dancers. Delta Tau Delta alumnus Tom Somers, who emceed the event last year, came from Oklahoma to serve as master of ceremonies. Greg Plowe, a senior fraternity member, drove from Chicago to help run the marathon.

Other hard workers this year were Dave Murray, who nonchalantly swallowed goldfish for every \$1000 raised, and Tom Kellett, who organized publicity.



Photos by Robert Kozloff

Story by Nancy Rogier

Denise Gazzarari and Rick Young let all emotions go as Master of Ceremonies Tom Somers (left) announces that the couple had collected over \$11,000.



LOOK TOWARD CO-OPTICAL FOR THE FINEST IN FASHION EYEWEAR



James Nixon
Optometrist
351-8330
Mon 8 Thurs 11 AM 4 PM 5 PM 8 30 PM
Tues Wed Fri 9 AM 1 PM 2 5 PM
Sat 9 AM to Noon

Basic Outlines

Your Private Tutor

Summaries of assigned texts for these courses.
Math: 108, 109, 111, 112, 113.
Statistics: 315.
Chem: 130, 131, 141.
Physics: 237, 238, 239, 287, 288, 289.
Soc: 201, 202, 211, 212, 213.
Nat Sci & Hum: All three terms.

SUMMARIES FOR ALL BASIC COLLEGE WAIVER EXAMS

Now Available At **Gibsons Book Store College Book Store Student Book Store**



ARTHUR TREACHER'S
THE ORIGINAL Fish & Chips.

Only on Tuesday.

OUR BUDGET BANQUET
\$1.79 COLE SLAW BEVERAGE
ARTHUR'S FISH & CHIPS, I.

Bring the Family.

EAT HERE
1001 E. GRAND RIVER
@ 48th DURAND
ACROSS FROM CAMPUS
TAKE HOME

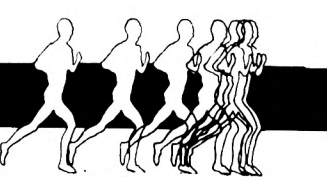


frank shorter sports™

Introducing **STREET FIGHTER.**



Every time your foot hits the hard road you experience forces up to 3 times your body weight. So, obviously the more forces your shoes can absorb, the less you must contend with.
Bring on the street fighter.



frank shorter sports
217 Ann St.

entertainment

Mason band plays prime cuts

By BRUCE BABIARZ
State News Reviewer

A strong updated rendition of "Feelin' Alright" opened up Dave Mason's respectable 10-song set Friday night before the near capacity Lansing Civic Center audience.

While impressive to first-time live Mason viewers, he was not up to par with past performances. Strains in his personal life and in his pocket-book have stifled Mason's creative lyrical and musical abilities.

Balding and sporting a few extra pounds, Mason took his audience for a "blast into the past" — undoubtedly where he would like to be — with the old Traffic tune, "Pearly Queen."

After gaining notoriety with Traffic in the late 60's and early 70's, Mason moved on his own to produce the highly acclaimed solo masterpiece, *Alone Together*.

However, the more than half-dozen albums released since then, haven't come close to matching the all-around lyrical and instrumental genius of the million selling *Alone Together* LP.

Let It Go, Let It Flow, his latest LP, from which he played the title cut, is refreshingly original, yet contains standard stylistic guitar riffs. The new hit single is currently climbing the charts.

The maestro needed a hit to put himself on firm financial ground after he broke with his wife two years ago and transferred to his current Columbia recording label.

The singer guitarist composer's newest music, with the exception of such cuts as, "We

Just Disagree," "Share Your Love," and "Let It Go, Let It Flow," have simple melodies and rhyming lyrics based on the long-established reputation and prowess of Mason's electric guitar work. However, Mason is riding on a fading image.

Mason's current work is unquestionably less artistic and more commercially geared than his earlier works. While trying to retain loyal fans, he is trying to grab an expanse of the large AM audience.

Between touring and trying to live up to his two-album per-annum contract with Columbia, he has had little time to put the quality standard set by his *Alone Together* into recent works. Mason has become the F. Scott Fitzgerald of the music world — he's producing and playing for pay. Bills must be paid.

As Mason said in a Rolling Stone interview a while back, "You can't paint a f---ing Mona Lisa every other day. I can't create something I really want 'cause I don't have the time. . . I can't come up with the output."

A collegiate-looking crowd was captivated by Mason's excellent performance of his classic "Look At You, Look At Me." His mesmerizing electric guitar work sent waves of electricity rushing into the audience.

The dominating six-piece backing band which included Rick Jaeger, drums, Joe Johnson, bass and Tony Dean, guitar, provided a tight back-up if not clearly upholding Mason at times. The guitarist's acid-rockish riffs, while superb, did not fit the traditional clean

electric accompaniment Jim Krueger used to provide Mason with.

During an extended version of the old tune "Give Me Some Loving," Johnson put his heart, soul and a little more into a masterful solo, Jaeger's powerful drum solo was accented by streaming white lights emanating from behind his drum set. Each member did a short solo before they performed a cohesive jam and electric finish to the song.

Mason's coarse vocals and flowing guitar work were strong, yet the 31-year-old guitarist seemed to be over-exerting himself somewhat. His unparalleled "genius" guitar work has not diminished in the least — yet his traditionally personable rapport with the audience was missing.

Also missing from his performance was the mellow amplified acoustic guitar that Mason devotees used to thrive on. He seems to be catering to

the market demand for commercial tunes, and playing strictly electric music.

Mason and his band finished the evening with an encore of "Show Me Some Affection." Mason may be proving the adage "old rock stars never die — they just fade away." But, hope may not be lost. The aging star may yet make a Crosby, Stills & Nash-type comeback, when financial pressures ease, and creative juices flow once more.

Welch, Clover impressive

By DAVE DIMARTINO
State News Reviewer

It isn't often that a concert's two opening acts seem to promise more than the main act can deliver; nevertheless, the appearance of former Fleetwood Mac guitarist Bob Welch and the Marin County-based Clover did just that in the Lansing Civic Center Friday night.

Headliner Dave Mason, who remarkably seems to be retaining a large audience of sorts, unfortunately seems to be an approaching artistic dead end. His recent *Let It Flow* featured a lead guitarist other than Mason, songs not even written by Mason, and even a track upon which he doesn't even sing — all this from a once-great singer/songwriter and lead guitarist.

Yet Welch and his French Kiss LP are anything but stagnant. The LP, aside from

being played continuously on every major FM station in the country — AM stations, too, with the major hits "Sentimental Lady" and now, "Ebony Eyes" — is, in fact, one of the best albums of 1977. Like his former group Fleetwood Mac, Welch is capable of recording music that is both artistically pleasing and commercially successful, which helps explain French Kiss's recently affirmed gold record status.

In concert, Welch has improved considerably since his Fleetwood Mac days. Today, he comes across as a hip musical version of Peter Fonda, and, thankfully, his preoccupation with UFOs, the Bermuda Triangle and other assorted "unexplained mysteries" no longer enters into his music.

Aside from most of the better material on French Kiss, Welch performed "Future Games" and "Hypnotized," perhaps his two best songs while with Fleetwood Mac. Also heard was "Big Town 2061," from the Paris album of the same name, although this was the night's only reference to Welch's embarrassing involvement with that group.

By and large, Welch's band is a good one — with the exception of a percussionist/backing vocalist who just stood on the stage looking rather stupid — and he's found a terrific accompanying lead guitarist. It took a while for the band to warm up Friday night, but eventually a proper sound balance was reached and the band almost precisely duplicated the French Kiss sound, much to their credit. The only failings were in the backing vocals department, simply because Welch sounds best when overdubbing his own.

Otherwise, Welch could easily have been the headliner Friday night. He probably will be, the next time he comes to town.

And as for Clover, the opening band: they didn't go down a storm, but they were appreciated. The band's two recent Mercury LPs have been exceptionally good, and while the group seems slightly anachronistic in many ways, the music Clover produces is as vital in its own way as that of either Welch or Dave Mason.

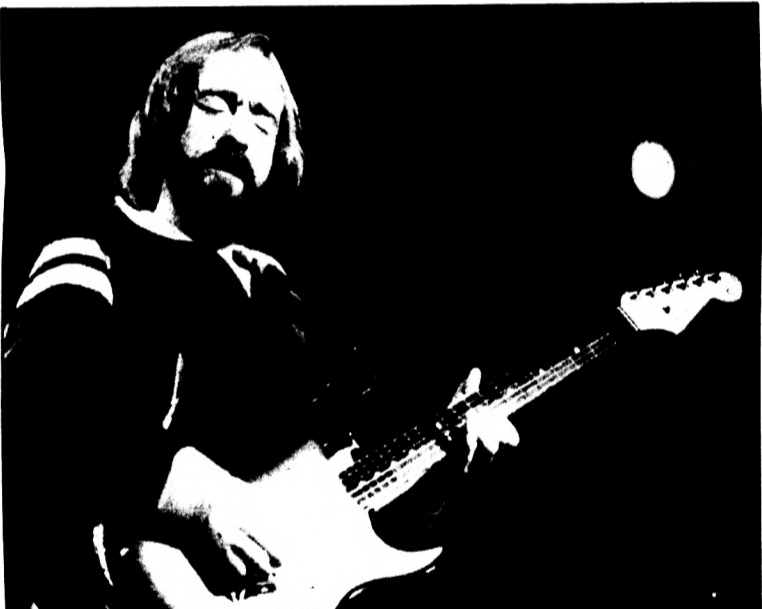
On stage, the band seems a cross of the old Illinois Speed Press — due to the vocals of harp player Huey Louis — and the Grateful Dead, back during their first album. Lead guitarist John McFee was excellent, although he wasn't allowed the time to play his pedal steel guitar, something he does exceptionally well.

Clover is an excellent band, but perhaps they might be enjoyed better in more intimate surroundings than the Civic Center provided. They're certainly much better than a bar band — most of all their music is reminiscent of the British "pub-rock" bands of the early 70s, like Brinsley Schwartz, Bees Make Honey and Help Yourself — and a beer in the hand of every audience member certainly might have livened things up considerably. Nevertheless, it was a very good show.



Bob Welch sings

State News Deborah J. Borin
Bob Welch entertains a receptive audience at Lansing Civic Center Friday night, sharing the bill with Dave Mason and Clover.



State News/Deborah J. Borin
Dave Mason performs a soulful riff before a near-capacity crowd at Lansing Civic Center Friday night.

YEAR-IN-JAPAN

Spend the 1978-1979 Academic Year in Japan

45 total credits

Study at Konan University in Kobe City at the foot of the Rokko mountain chain

live with Japanese families

field trips

cultural activities

previous training in Japanese not required

INFORMATION MEETINGS

TONIGHT FEBRUARY 27 7:30 204 INTERNATIONAL CENTER

TUESDAY FEBRUARY 28 4:00 204 INTERNATIONAL CENTER

FINANCIAL AID AVAILABLE TO QUALIFIED MSU STUDENTS

FOR FURTHER INFORMATION CONTACT

OFFICE OF OVERSEAS STUDY
108 INTERNATIONAL CENTER
353-8920

OR

ASIAN STUDIES
101 INTERNATIONAL CENTER
353-1680

GRADUATING ENGINEERS:

Sign up now for a look at one of the year's best job offers

We offer civilian career opportunities that stress immediate "hands-on" responsibility—your chance for recognition, reward and professional growth right from the start.

Mare Island is an engineer's kind of world. We're the third largest active naval shipyard in the U.S. and the West Coast's oldest and best known naval institution.

And, we're located in one of the world's best places to live and work—the heart of Northern California! San Francisco is just a bay away. . . the famous wine country is right next door. . . and sailing or skiing are as close as next week-end! To get complete information, contact your placement office and sign up now for an interview.

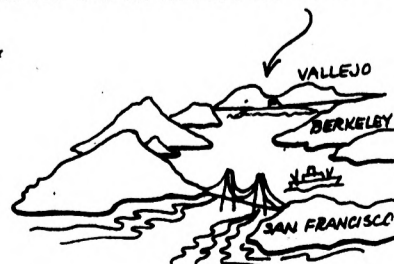
CAMPUS INTERVIEWS

March 2, 1978

MARE ISLAND NAVAL SHIPYARD

Vallejo, California

An Equal Opportunity Employer
U. S. Citizenship Required



Deborah Weber
Time for
Repair
We sell
Big Three
Datsun V
The
1400 E. CAVAN
MONDAY
50¢ off
any sub
with coupon
Galley Sub Shop
2580 E. Grand River
East Lansing
351-0304
after good 2-27-78

WEA
349
Tempe
Comple
Michigan Nation

Rain
BURGE
& BAR
Our new sp
BREW & BAR
5:00 p.m. on
to enjoy one o
pound burgers
for only \$1.00
9:00 p.m. the
will get you int
So on Monday
the Rainbow R
BREW & BAR
hop on over to
admission ever
Rainbow Ranc
2843 E. C
3

Weber and Colours show various hues

By DAVE DIMARTINO
State News Reviewer

Eberhard Weber and Colours performed in Erickson Kiva Friday night, giving a small but appreciative audience a quietly spectacular show much along the lines of the bassist's very tasteful ECM LPs.

The show, sponsored by Showcase Jazz, was an excellent booking, as Weber is probably the best bassist involved with Manfred Eicher's entire ECM record line. Saxophonist Charlie Mariano, an American who's played with Charles Mingus, among others, has enjoyed a highly creative musical association with the German jazz-rock group Embryo, and drummer John Mar-

shall — a real surprise — still maintains his membership in the now legendary British group Soft Machine. Rainer Bruninghaus, a keyboard player who's appeared with Weber on all his ECM recordings, completed the quartet and showed several talents none of his work on Weber's albums has yet revealed.

The name "Colours" is an accurate one. The band was quietly sedate onstage; the only motion by the four seated musicians was to be found in their music. Due to Weber's unusual instrument — what looked like a fretless electric bass standing on its end — and Mariano's electric reed pickup, there is a certain inevitable

tonal homogeneity produced by the two instruments that was broken up Friday night only by Marshall's drums and Bruninghaus' work on the grand piano.

Yet within this framework, both Weber and Mariano drew upon sufficient inspiration to capably work in what could be a confining setting. Mariano's incorporation of the Indian nagaswaram — an instrument that is capable of using several various reed configurations — fit perfectly with Weber's almost trance-inducing music. Weber, occasionally bowing his bass, emphasizes notes much more than tone, and, as a result, tonal variety can only be found elsewhere in the band.

Pianist Bruninghaus clearly

has classical roots, as, in fact, during a particularly precise solo the pianist slid in two or three classical "quotes" that made Mariano's face lighten considerably. But his work on the Oberheim synthesizer toward the concert's end was, to my mind, the best part of the show, particularly with John Marshall's inspiringly "heavy" drum accompaniment.

Marshall himself is thoroughly spectacular. His appearance with Weber might be considered enigmatic to those familiar with his work in Soft Machine, especially since the latter-day version of the band plays at a considerably higher decibel

level than does Weber's. But Marshall's quiet good taste, and some excellent cymbal work, prevailed; he, rather than Jon Christensen — the drummer on Weber's albums — seems the perfect percussionist for the band. When Soft Machine was at its best, during its third and fourth albums, the group played music every much like that of Weber. Though Marshall joined Soft Machine during the recording of the group's fifth LP, his experience with the band involved playing this same, Terry Riley-ish music that influenced Weber's Colours of Chloe and its best cut, "No Motion Picture."

Marshall adds a firmer foundation to Weber's music than does drummer Christensen, who usually seems more concerned with cosmetic, incidental percussion than the pulsating beat most of Weber's music needs.

The night's best composition which featured Bruninghaus' remarkable synthesizer work, was a preview of Weber's forthcoming LP on ECM which, Weber said, is due in the stores in two or three weeks.

Seeing Weber was a delight; much thanks to Showcase Jazz for putting the concert together. Things couldn't have been smoother.



Eberhard Weber in Erickson Kiva Friday night.

Who are you, telling us how to run our business?

It takes a lot of confidence to come fresh out of school and begin telling us how to do things

On the other hand, it takes an unusual company to provide the kind of environment where that can happen, but that is exactly the environment you'll find at Scott Paper.

We constantly search for people who have the ability to respond to challenge and think for themselves, those with the initiative and desire to seek alternatives, the skill and courage to convince others that there are better ways and who aren't afraid to express their ideas.

At Scott, we admire an aggressive stance because we are an aggressive company. You can make your own opportunities with us... and we'll prove it.

Contact your placement office for information

SCOTT

an equal opportunity employer, m/f



Time for Repairs?



We specialize in the Big Three From Across the Sea Datsun Volkswagen Toyota

The Beetle Shop

1400 E. CAVANAUGH Ph. 393-1590

MONDAY SPECIAL

50¢ off any sub with coupon



Valley Sub Shop 2580 E. Grand River East Lansing 351-6304

WEATHER?? Call 349-9560 Temperature and Complete Forecast

Michigan National Bank From WFMK 99

Rainbow Ranch

BURGER & BREW & BARHOPPERS

Our new special is BURGER & BREW & BARHOPPERS. Beginning at 5:00 p.m. on Mondays you'll be able to enjoy one of our delicious quarter-pound burgers and a cold draft beer for only \$1.00 all night! Beginning at 9:00 p.m. the low cover of only 50¢ will get you into the Alley-Ly free too! So on Monday nights stop on out to the Rainbow Ranch for BURGER & BREW & BARHOPPERS, and then hop on over to the Alley-Ly for free admission every Monday, from the Rainbow Ranch and the Alley-Ly.

2843 E. Gd. River, E. Lans. 351-1201

Grand Opening!

NEW LOCATION—213 ANN ST.

TO CELEBRATE, YOU'LL SAVE

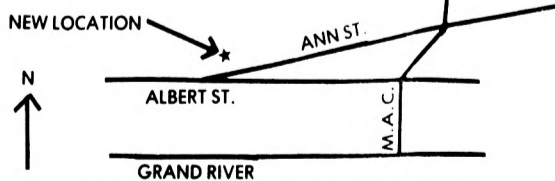
20% OFF EVERYTHING

IN OUR STORE!

TODAY THRU TUESDAY ONLY

SAVE ON ALL FABRICS, NOTIONS, PATTERNS, YARNS, STITCHERY, LATCH HOOK SUPPLIES...

EVERYTHING!



SHOP TODAY & TOMORROW 9:30 A.M. TO 9:00 P.M.

fenstemacher's

213 ANN ST. OPEN DAILY 9:30-9:00 SAT. 9:30-5:30 SUN 12-5

Transmission Maintenance Special



Change transmission fluid. Adjust bands. Clean screen. Replace pan-gasket. Complete road test. \$8.95 plus fluid

6026 S. Cedar 393-7540 (at Miller)

DISCO SKATING

Free Admission

the night your hall is featured

Every Monday

'Super Spartan Nite'

8-11 p.m.

Feb. 27 Akers, Giltner Halls

March 6 All College Appreciation Skate

April 3 Win a free party with the largest dorm turnout.



Just 50¢ with college I.D., General Admission \$1.50 Skate Rental 75¢

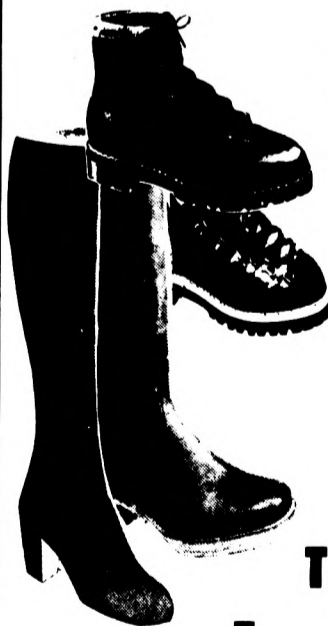


2751 E. Grand River across from Coral Gables

MSU BOOTERY

ALL REMAINING WINTER BOOTS

1/2 OFF



This week only Everything Must Go

Zodiac, Sandler, selected styles of Fryes and even some hiking

225 E. Grand River across from MSU Union Open Thurs. & Fri. until 9 other nights til 6





Dirt flies as a steer (above) is pulled to the ground in the steer wrestling event. Richard Colhoff, Nebraska College of Business, grits

his teeth (left) as he readies himself for a bareback bronc ride.

Ropin', wrestlin', riders race

They're a young team and they know it, but just try to stop anyone on the MSU Rodeo Team from doing their riding. They'd be more than likely to tie you up like a goat and leave you kickin'.

Throughout the weekend, members of the MSU Rodeo Team joined more than 100 team riders from all over the country to ride, rope, wrestle and tie their way through four shows at rodeo team-sponsored rodeo the Livestock Pavilion.

Nine members of the Rodeo Club made up this year's team. Though the team is young — four are freshman — their spirit matches that of even the most experienced riders. For most team members, the rodeo, this weekend was their first.

The team is mostly comprised of women. Only three men competed in the shows, while six women competed in the three women's events. The men's events drew the most "oohs" and "aahs," however. They were bareback bronc-riding, steer-wrestling, saddle bronc-riding, and the most exciting event — bull-riding.

Lowell Weide was one of the freshman team riders to compete in the bull-riding event.

"It's really exciting," he said. "You're so psyched up 'cause you're real, real tense. We always have someone — a good friend, for example — talking to us right before we go so we don't get too nervous."

Weide said an important part of bull-riding is concentration. "If you go out there and don't think about your ride, you're gonna get bucked off," he said.

Though the rider only must stay on a bull or a bronc for eight seconds, it seems like a lifetime during the event.

But in women's events, such as calf-roping or barrel racing, the seconds race by and participants said it seems like there's never enough time.

"When the guys go out, the eight seconds go by so slowly, but when we go out it's eight seconds, 12 seconds, before you know it," Rodeo Queen Diane Efting said.

As Queen, Efting represented the club and made appearances at the beginning of each show. Between each appearance, she changed into a different riding outfit "to keep looking queenly."

"I've been in shows since I was five and collecting costumes since I was five," she said. "I have stacks and stacks of hats."

Efting, a junior majoring in agriculture, also competed in barrel races Saturday afternoon.

Barrel racing, which involves riding around three barrels placed around the arena, is judged on riding speed and skill. All three barrels must be left standing.

Another women's event, goat-tying, tests speed and horsemanship.

"The major percentage of goat-tying is in your horse and the way you ride," Donna Toth, sophomore and rodeo co-chairperson, said.

Toth and Weide both said they are rarely aware of people in the stands when they compete.

MSU rodeo club members — and all rodeo riders in the country — are required to maintain a 2.0 grade point average to compete.

Mike Bauer, a pre-vet freshman from Holmes Hills, said he found the requirement not difficult to keep.

"Working is more of a problem than rodeo," he said. "Rodeo is kind of an incentive to study."

Bauer said the rodeo club played a part in his decision to come to MSU.

Other team riders who competed were freshman Patti Moss, Annette Foland and Pam Smith, sophomore Laura Balay and seniors Sue Wolf and Mike O'Daniel. O'Daniel also was a co-chairperson of the rodeo.



(above) is about to land around the horns of a steer in the women's break-roping event. Garry Campbell, South Dakota State University, ties a roped calf in team roping. Connie Clementson, University of Wisconsin, shows the judges finished (right) in the women's goat tying event.



Photos by Rick Pleus

Story by Nancy Rogier

By REGINALD THOMAS
State News Staff Writer

Native Americans should return to their traditional natural life to continue existing in the United States, Phillip Deere said Friday night.

Deere, a "traditional" Native American from the Muskegee Creek ethnic group, spoke to a small audience in Hubbard Hall. He said changes taking place in American society are making it necessary for Native Americans to return to their original harmonious relationship with nature.

Native Americans followed natural law and established governments long before whites came to the new world, he said.

Return to nature, Indian says

Americans the land guaranteed them by earlier treaties, and said the government will not provide Native Americans with a national land base.

Deere said the government refuses to bring the treaty issue to court. If the boundaries outlined in original treaties are observed, he continued, Native Americans would control five different states. However, he did not name the states.

Deere said if Native Americans are allowed to obtain this land base, they could control the mineral and resource deposits on the reservations.

The original agreement was for whites to occupy one area and Native Americans another, Deere said. The theory was represented in the ceremonial "two-row wampum belt," he explained.

The wampum belt contained two rows of beads representing two separate societies. Like the beads of the wampum belt, the two societies were not made to mix and would exist peacefully if neither interfered with the other, he said.

Deere said whites overstepped their boundaries and disrupted the Native American's natural way of life.

Before whites infused indigenous societies, there were no major problems with crime, Deere said. He added that under the thousand-year-old government of Native Americans, there were no prisons or alcohol abuse.

But because of the Western value system, Native Americans are now suffering from alcohol abuse, drug addiction, poor housing, a split of the family, and a rise in crime, Deere said.

He said more Native Americans are on Welfare than ever before. He said the United States government and Christian organizations have made Native Americans dependent.

"They (Native Americans) may have been poor people but they weren't dependent. They raised their own crops and grew their own chickens. Indians are worse off today than they were 100 years ago. But they say this is a better way of life," he said.

Deere was a delegate to the non-governmental committee on human rights in Geneva, Switzerland last year.

Deere said the federal government is denying Native

'U' program to be implemented in area

(continued from page 3.)

said. Then the project will deal specifically with transforming these issues into classroom lesson plans.

Ten teachers will be selected to work directly with regional planners to design an environmental-related curriculum. The teachers will offer workable lesson plans while the planning commission provides subject content, such as how the tri-county region enforces Environmental Protection Agency regulations of air quality. Hetherington said.

MSU's Math and Science Teaching Center is a coordinated effort between the College of Natural Science and the College of Education, Hetherington explained. The center deals with environmental, energy and science education. He added it teaches science methods courses to prospective science teachers and develops education projects for the classroom.

MSU's Math and Science Teaching Center is a coordinated effort between the College of Natural Science and the College of Education, Hetherington explained. The center deals with environmental, energy and science education. He added it teaches science methods courses to prospective science teachers and develops education projects for the classroom.

RHA 24-hour movie program line
355-0313

MICHIGAN STATE UNIVERSITY

Department of Theatre presents

OH, DAD, POOR DAD,
MAMMA'S HUNG YOU
IN THE CLOSET AND
I'M FEELING SO SAD

Feb. 28-Mar. 4; Mar. 8-11
ARENA THEATRE 8:15 p.m.

BOX OFFICE PHONE
355-0148

PIZZA & BREW & BARHOPPERS

Our new special is PIZZA & BREW & BARHOPPERS. Beginning at 5:00 p.m. on Mondays you'll be able to enjoy one of our super New York Pizzas and a cold draft beer for only \$1.00 all night. Beginning at 9:00 p.m. the low cover of only \$0.50 will get you into the RAINBOW RANCH free too! So on Monday nights stop on down to the Alley for PIZZA & BREW & BARHOPPERS, and then hop on over to the Rainbow Ranch for free admission every Monday from the Alley and the Rainbow Ranch.

Alley Club

TONIGHT

WINNER: BEST FILM OF THE YEAR -

ADULT FILM ASSOCIATION OF AMERICA

"A MONUMENTAL ACHIEVEMENT ON THE HARD CORE CIRCUIT. 'EVERY INCH' is porno of a higher order, it suggests what forms of such films might take in the future."

—Frank Segers, Variety

Now, that's entertainment!

HARRY REEMS
DARBY LLOYD RAINS
in
Every Inch A Lady

A Quality Adult Film
INTRODUCING
INCREDIBLE DR. INFINITY
DOING HIS OWN THING

RATED X

AN AMER BRODS PRODUCTION

TONIGHT

SHOWTIMES: 7:30, 9:00, 10:20

SHOWPLACE: 102 B WELLS

ADMISSION: *2.50 students, *3.50 Faculty & staff

an entertainment service of beal films. Students, faculty & staff welcome. Id's checked.

Steve Goodman



ALSO
KITTY DONOHOE
Fri. & Sat. March 3,4
8pm and 10:30pm
McDonel Kiva

TICKETS: 3.00 ADVANCE/
3.50 AT THE DOOR

Available at MSUnion, Elderly Instruments
and Campus Corners II.

Meridian 8 349-2700 MERIDIAN MALL

Meridian West Across from "The Backstage"

Jane Fonda
Vanessa Redgrave
JULIA

Monday 6:00-8:30 Twilite 5:30-6:00 Adults \$1.50

In 1848 he rode across
the great plains -
GRAY EAGLE

Monday 5:45-8:00 Twilite 5:15-5:45 Adults \$1.50

"ONE OF THE BEST PICTURES
OF THE YEAR"
RICHARD DREYFUSS, MARSHA MASON
THE GOODBYE GIRL

Monday 5:30-6:15-7:45-8:30 Twilite 5:00-5:30-5:45-6:15

HENRY WINKLER
THE ONE AND ONLY

Monday 6:15-8:30 Twilite 5:45-6:15 Adults \$1.50

ANNE BANCROFT SHIRLEY MACLAINE
The Turning Point

Monday 6:00-8:15 Twilite 5:30-6:00 Adults \$1.50

"Oh, God!"
Is it Funny?

Monday 6:00-8:00 Twilite 5:30-6:00 Adults \$1.50

BURT REYNOLDS "SEMI-KRIS KRISTOFFERSON TOUGH"

Monday 5:45-8:00 Twilite 5:15-5:45 Adults \$1.50

THE OTHER SIDE OF THE MOUNTAIN PART 2
A UNIVERSAL PICTURE
M-Th. 7:18
Fri. 7:18, 9:18
Sat. 8:18, 1:18, 3:18, 5:18, 7:18, 9:18

Butterfield Theatres
TONIGHT IS GUEST NIGHT!
You and another Adult admitted for the price of one.
... at these showcase Theatres.

MICHIGAN
Open at 7:00 p.m.
Feature at 7:15-9:20
Outstanding!
HAROLD ROBBINS
The Betsy

GADMER
OPEN AT 7:00 p.m.
FEATURE AT 7:20-9:20
Don't miss it!

FROM THE #1 BEST SELLING SUSPENSE THRILLER
COMA
United Artists

STATE
TONIGHT OPEN 7 p.m.
Shows 7:20-9:20
THE FEVER IS SPREADING
SATURDAY NIGHT FEVER
A Paramount Picture
Catchit

LIVE AT...
DOOLEY'S
TONITE
BILLY COBHAM
MONDAY, FEBRUARY 27- 8:30 & 11:00 pm
TICKETS 5.50 IN ADVANCE

TOM CHAPIN
SUNDAY, MARCH 5 - 8 & 10:30pm
STAR OF "MAKE A WISH" TICKETS 4.50 IN ADVANCE
ADVANCE TICKETS FOR ALL SHOWS AVAILABLE NOW AT
DOOLEY'S
AND AT
RECORDLAND
LANSING AND MERIDIAN MALLS

SHOWCASEJAZZ PRESENTS
JOSEPH JARMAN
ACCOMPANIED BY DANCER EVE JORJORJIAN
Saturday, March 4
8 & 10:30 pm
Tower Room, 4th floor - MSUnion
TICKETS: 3.00 at MSUnion Ticket Office and Wazoo Records
A division of the ASMSU Programming Board. This concert made possible, in part, by a grant from the National Endowment for the Arts, in Washington, D.C., a federal agency. Not accessible.

PHONE
No. Lines Price
3 2.75
4 3.60
5 4.50
6 5.40
7 6.30

EconoLine
3 line
Price
sale p
Peanuts P
75' pe
Rummage
63' pe
Round Tow
63' pe
Lost & Found
per ins

Ad - 2 p.m.
Cancellation
publicat
Once ad is
until aft
There is a
addition
The State N
day's inc
be made
bills are due
paid by
be due.

Automotive

IT IS the policy
News that the las
Advertising must
in advance begin
ay 13, 1978. Brin
347 Student Serv
5:20-3-10(8)

AUSTIN AMER
AM radio, good
son. \$425 or best
2287, 8-3-1(3)

AMC JAVELIN, 15
shift, console, st
tape deck, vinyl r
ulate condition \$17
Saginaw, E. Lan
3210 Evenings a
ends. 8-2-27(7)

ASTRE 1976, ma
proofed, 11,500 mi
393-7821 after
8-2-27(3)

CAPRI 1973, V6, ru
Tape, rear window
11605, Tam 484-93
9048, 8-2-27(3)

CAPRICE 1971, go
portation car. \$595.
2757 after 6 p.m. 8-2-27(3)

CHEVELLE STATIO
1973 Standard tran
radio \$1095 FLUM
STAR CHEVROL
4943, 4-3-1(4)

CUTLASS SUPRE
2 door, buckets, er
collant, body ver
1966, 482-5714 after
3-27(4)

CUTLASS SALON
AM-FM, air, air extr
or best. 882-0727 be
p.m. 5-3-3(3)

DATSUN 1972, Stat
on. New muffler
rebuild carburetor, sn
1700, 353-9400 or 4
2-28(4)

FORD 1974 van, bu
very dependable an
42400. Call 488-6847
5-3-2(3)

FORD ECONOLIN
1972. Half ton, pow
ports and sharp late r
1975, 349-9503, 3-2-27(3)

FORD VAN, 1973, 6
standard transmissio
nomical. 351-6557, 2-27(3)

JAVELIN AMX, 1974
deck AM-FM, \$2175
332-5444, 6-2-28(3)

MAVERICK 1970, t
transportation, runs
snow tires, \$225, 355-
8-27(3)

MUSTANG 1973, E
condition. Very low n
92-0297, 8-3-7(3)

MUSTANG II 1974 M
AM-FM, automatic,
steering, excellent co
348-5817 after 5 p.m. 8-2-27(3)

NEED CASH? We bu
ports and sharp late r
contacts. Call Joh
Young, WILLIAMS
684-1341 or 484-2551.
1-19-2-28(5)

VW BUG 1967, 75,000
needs some work. \$200
81-5706, 2-5-3(3)

policy of the State... the last 4 weeks of Student... Classified... must be paid for... beginning Febru... 78. Bring or mail to... Services.

le to come to your... or super function... anything you have... specials... classes... performances... ROUND TOWN... \$2.50 per day... MARY at 355-8255... (1018)...

PREPAID legal Ser... in new makes legal... available without fee... graduate MSU stu... office open 9 am-12... pm 5 pm, Monday... For information of... ent call 355-8266... (9)...

something for every... Today's Classified Ad... them out for sup... R UNDERGRAD... tions Available... andancy in ANR... Student Senate... Elections... ay thru March... Agriculture H...

REPAIR FOR... • DAT • LSAT •... • OCAT • VAT •... NMB I, II, III... CFMG • FLEX • VOG... L DENTAL BOARD... NURSING BOARDS... sible Programs & Ho... here is a differenc... Stanley KAPLAN... EDUCATIONAL CENTER... repair to stu... with... information... or call: 29226 Orchard... Road Suite 205 Farm... MI 48018 (313) 851-00... (313) 851-00...

1st... Blackwalls... Warranty... \$13.7... 18.7... 19.7... 21.7... 23.7... 26.7... Mile

daily tv highlights

(6)WJIM-TV(CBS) (10)WILX-TV(NBC) (11)WELM-TV(Cable) (12)WJRT-TV(ABC) (23)WKAR-TV(PBS)

MONDAY AFTERNOON 12:00 (12) News (10) To Say the Least (23) Advocates 12:20 (12) Almanac 12:30 (10) Search For Tomorrow (10) Gong Show (10) Ryan's Hope 1:00 (10) Young and Restless (10) For Richer, For Poorer (10) All My Children (10) Gettin' Over 1:30 (10) As the World Turns (10) Days of Our Lives 2:00 (10) One Life to Live (10) Over Easy 2:30 (10) Guiding Light (10) Doctors (10) Cooking with Continental Flavor 3:00 (10) Another World (10) General Hospital (10) Antiques 3:30 (10) All in the Family (10) Villa Alegre 4:00 (10) New Mickey Mouse Club	(10) Green Acres (12) Bonanza (12) Movie (23) Sesame Street 4:30 (6) Doris Day (10) Gilligan's Island 5:00 (6) Gunsmoke (10) Emergency One! (23) Mister Rogers' Neighborhood 5:30 (11) News (23) Electric Company 6:00 (6-10-12) News (11) TNT True Adventure (23) Dick Cavett 6:30 (6-10-12) News (11) The Bible's View (23) Over Easy 7:00 (6) My Three Sons (10) Mary Tyler Moore (11) Past and Present Tense (12) Brady Bunch (23) Spartan Sportlite 7:30 (6) Gong Show (10) Hollywood Squares (11) Handicappers, Unlimited	(12) Mary Tyler Moore (23) MacNeil/Lehrer Report 8:00 (6) New Zealand for the Fun of It (10) Little House on the Prairie (11) MSU Hockey (12) Six Million Dollar Man (23) Dialog 8:30 9:00 (6) M*A*S*H* (10) Loose Change (12) Movie	(23) Great Composers 9:30 (6) One Day at a Time (23) Anyone for Tennyson? 10:00 (6) Lou Grant (23) Onedn Line 11:00 (6-10-12) News (23) Dick Cavett 11:30 (6) Movie (10) Johnny Carson (12) Forever Fernwood (23) ABC News 12:00 (12) Movie
--	--	--	---

MSU SHADOWS

by Gordon Carleton

SPONSORED BY: **PINBALL PETES**
Present this really funny comic for 25¢ worth of free play! (not valid in S. & S. region)

HAVE YOU HEARD ABOUT HALDEMAN'S WATERGATE BOOK?

TO THE BEST OF MY RECOLLECTION, I BELIEVE SUCH A SITUATION WAS POSSIBLE, BUT I WILL HAVE TO CHECK MY NOTES TAKEN AT THE TIME TO CONFIRM IT.

©1978 GORDON CARLETON

ADVERTISE IN THIS SPACE CALL 353-6400

TRAVELS WITH FARLEY

Phil Frank

SPONSORED BY: **Bonda's Little Freeway Service Station**
1301 E. Gr. River
Next to Varsity Inn
We Appreciate Your Business

NOW THEN, HOW MANY OCCUPANTS WILL THERE BE IN THIS DWELLING?

WELL, LET'S SEE... EVERYTHING THAT CREEPETH ON THE EARTH, ALL THE BEASTS OF THE WORLD... TWO EACH OF ALL THE BIRDS... FOR ALL OF THEM?

WELL, THE BUILDING CODE REQUIRES THAT YOU PROVIDE ADEQUATE BATHROOM FACILITIES FOR ALL THE OCCUPANTS

FOR ALL OF THEM?

TUMBLEWEEDS

Tom K. Ryan

SPONSORED BY: **CAMPUS PIZZA** Free Delivery: 337-1377
1312 Mich. Ave.

HAVE YOU SEEN MY FUTURE PROSPECTIVE HUSBY TODAY, PEARIE?

JAIL

IF YOU MEAN TUMBLEWEEDS, HE'S OVER BY THE GENERAL STORE.

ISN'T IT UNCANNY HOW FATE WILL THROW US TOGETHER AGAIN?!

CROSSWORD PUZZLE

ACROSS

29. Grown together
31. Awareness
32. Stamp
33. Girl's name
35. Growth; suffix
37. Russian community
38. Dutch commune
41. Coral reef
43. Embodiment
45. Horab
46. Oil of orange blossoms
47. Panama
48. Elysian

DOWN

1. Asparagus is one
2. Arrow poison
3. Hub
4. Friend in Paris
5. Float in air
6. Select
7. Hebrew dry measure
8. Turkish generals
9. Papal palace
10. Broods
11. Some
18. River to the Rhine
20. Sayings
21. Unsociable
23. Author of "Fables in Slang"
24. Papa
25. Fatuous
26. Windflower
28. Decade
30. Tree
34. Climbing vine
36. Wothound
38. Town on the Thames
39. Precipice
40. "-----" the Red"
41. Kiang
42. Golf term
44. Guido's note

SPONSORED BY: **Shepard's campus**

ZIGGY

A REAL FRIEND IS ONE WHO STANDS BESIDE YOU... ..WHEN YOU'RE BESIDE YOURSELF !!

©1978 Universal Press Syndicate

PROFESSOR PHUMBLE

by Bill Yates

SPONSORED BY: **LOUIS CLEANERS LAUNDRY** 332-3537
627 J. GRAND RIVER EAST LANSING

EXPERT CARE FOR ALL YOUR WEAR

WEATHER

NO WONDER YOUR FORECASTS ARE SCREWED UP, PHUMBLE. YOU'VE BEEN STUDYING THE PART BOARD!

Bill Yates 2-27

PEANUTS

by Schulz

SPONSORED BY: **LOUIS CLEANERS LAUNDRY** 332-3537
627 J. GRAND RIVER EAST LANSING

EXPERT CARE FOR ALL YOUR WEAR

I'M AWAKE, MA'AM... BUT I CAN'T RAISE MY HEAD...

MAYBE YOU COULD DO ME A FAVOR, MA'AM...

MAYBE YOU COULD SEND OUT FOR A NEW NECK!

FRANK & ERNEST

by Bob Thaves

SPONSORED BY: **CHILE RELLENOS**
truly a gourmet treat!
3.50
EL AZTECO RESTAURANT
203 M.A.C. 351-9111

THAT'S THE FIRST DOLLAR I EVER EARNED ... AND THIS IS THE OTHER ONE.

©1978 BY NEA INC. TM REG. US PAT. OFF. THAVES

THE DROPOUTS

by Post

SPONSORED BY: **CAMPUS PIZZA 2** COMING SOON!

IT'S MY SHORTNESS, ALF... IT'S GOT ME DOWN AGAIN... WHAT DO I DO?

THINK OF ALL THE GREAT SHORT PEOPLE, SANDY...

LIKE WHO, ALF? - TELL ME AGAIN.

WELL... NAPOLEON, GANDHI, EINSTEIN, LEONARDO KING, BEETHOVEN... UH...

MORE, ALF...

BENJAMIN FRANKLIN, TOM JEFFERSON... UH... DE GAULLE... WILT CHAMBERLAIN.

B.C.

by Johnny Hart

SPONSORED BY: **PILLOW TALK FURNITURE**
Soft and sexy furniture
E.W. Mall, Frenster Shopping Center
351-1747

WHO'S YOUR FAVORITE AUTHOR?

ERMA WAMBAUGH

WHAT DID SHE WRITE?

"THE GRASS IS ALWAYS GREENER UNDER THE VICE SQUAD."

SAM and SILO

by Jerry Dumas and Mort Walker

SPONSORED BY: **The King's Den**
Hair Styling for Men and Women
Call for appointment today
phone 332-8191
208 M.A.C. below Jones Stationary
Now open Saturdays

WHERE ARE YOU GUYS GOING?

IT'S CAREER DAY AT THE HIGH SCHOOL

WE'RE GOING TO SPEAK TO THE KIDS ABOUT JOBS

HE'S TAKING AN OPPOSING VIEW

WHAT ABOUT FUNNY FLOYD?

BETLE BAILEY

by Mort Walker

SPONSORED BY: **BILLY COBHAM TONIGHT**
8:30 & 11:00 P.M.
AT DOOLEY'S
Tickets \$5.00 in advance

GOOD NEWS, BETLE! NO MORE WORK DETAILS RIGHT AFTER YOU'VE HAD DROPS PUT IN YOUR EYES

STOCKADE

Poisonous plant labeling gets mixed reactions

By MICHELLE CHAMBERS
State News Staff Writer

A Michigan Senate bill introduced by Sen. Gary Corbin, D-Clio, calling for mandatory labeling of all potentially poisonous plants has drawn mixed reaction from local florists.

Mike Seidl, assistant manager of Norm Kesel Florist Inc., on Grand River Avenue, said the labeling will be "another added cost that isn't necessary."

He said there were not many plants on the retail market that could be considered poisonous. "Someone would have to eat a whole plant in order to get poisoned," he said.

Manager Jim Schmidt of the Hyacinth House Greenery in the Frandor Shopping Center, agreed there are not many plants that are considered poisonous, but said he thought mandatory labeling was a "good idea."

"The added cost for a label wouldn't be that much," he said.

He explained that his store currently tries to inform customers if a plant is potentially dangerous, but added labeling would protect the

consumer if his employees neglect this service. "The labeling would make us all safer," he said.

Barb Sinadinous, manager of The Cactus Corner on M.A.C. Ave., said labeling was "probably long overdue," but was in favor of taking some plants off the market, to protect small children and animals.

"Eliminating some plants from the market could be more beneficial than labeling them," she said.

The Michigan Florists' Association is not opposed to the bill, but it has "serious concerns" about the bill as it now stands, Richard Northrup, executive vice-president of the association, said.

"The bill is unworkable in its present state," he said. "The Michigan Department of Agriculture would have to hire at least seven new inspectors and there is no money attached to it (the bill)," he said.

Northrup explained there is also no current research available identifying the possible danger of houseplants.

The bill would take a considerable amount of money, he said, adding that the Dept. of Agriculture cannot find a particular plant that is toxic, but only degrees of individual allergies.

"No one has ever died from plant poisoning," Northrup said.

"When I talked to the senator he wasn't able to cite a significant example of the problem," he added.

The bill is an amendment to Act No. 189 of the Public Acts of 1931 which already calls for labeling of potentially dangerous outdoor plants, a legislative aide to Corbin explained.

"We don't feel that we have to wait for

fatalities," the aide said. "We think the consumer has a right to know."

The National Clearing House for Poison Control Centers, a department of the U.S. Dept. of Health, Education and Welfare, states plant poisoning is second only to soaps and cleaners, the aide said.

"We can't label every plant," the aide said, adding that a "narrow list" of 10 to 20 plants considered potentially dangerous would reduce the risk of poisoning.

The aide said Corbin does not feel there is a need for primary research and the cost of labeling would be insignificant.

Tips on poisoning prevention

The Poison Information Center at St. Lawrence Hospital, which serves the Tri-County area, offers the following suggestions to prevent possible plant poisoning of people and pets.

• Know the names of the plants in your house.

• Know what the common signs of poisoning from plants are.

• Keep a bottle of syrup of ipecac on hand if there are young children around the house. Syrup of ipecac may be purchased at a pharmacy

in a one-ounce container, but should be used only at the suggestion of the Poison Center or a physician.

• Keep a list of emergency phone numbers by the telephone. Make certain the Poison Center number is listed.

• If there is a suspicion of poisoning from any source, call a physician or the Poison Center for instructions.

Louis Edwards

Haircutters

TWO LOCATIONS TO SERVE YOU!

Full Service Salons with 3 Nail Technicians,
14 Stylists and 4 Aestheticians

2225 E. Grand River
(Groesbeck area)
484-8423

1417 1/2 E. Michigan Ave.
(Lansing)
Above Bancroft Flowers
487-6655

Owners:
Carole and Don Satterfield



ANNOUNCEMENT

POSITION OPEN FOR A STUDENT MEDIA
APPROPRIATIONS BOARD APPOINTEE.

APPLY AT ROOM 334 STUDENT SERVICES
BUILDING.

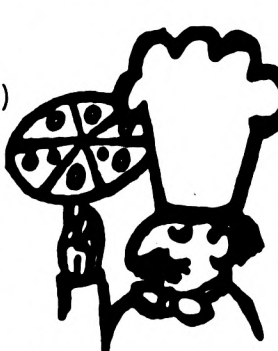
PETITION DEADLINE IS MONDAY,
MARCH 6, 1978 AT 5 P.M.

MONDAY SPECIAL

FREE QT. OF COKE!

with every pizza
(you don't even have to ask!)

CAMPUS PIZZA



1312 Mich. Ave.

FREE DELIVERY: 337-1377

no coupons necessary

<h3>Produce</h3> <table style="width: 100%;"> <tr><td>Head Lettuce - 24 size</td><td style="text-align: right;">33¢ ea.</td></tr> <tr><td>Fresh Avocados - 24 size</td><td style="text-align: right;">39¢ ea.</td></tr> <tr><td>Fresh Pineapple 10 ct. size</td><td style="text-align: right;">77¢</td></tr> </table>	Head Lettuce - 24 size	33¢ ea.	Fresh Avocados - 24 size	39¢ ea.	Fresh Pineapple 10 ct. size	77¢	<h3>In Store Coupons</h3> <table style="width: 100%;"> <tr><td>Ajax Cleanser - 14 oz. Special Label</td><td style="text-align: right;">9¢ Save 18¢</td></tr> <tr><td>Spartan Aluminum Foil - 25' roll</td><td style="text-align: right;">22¢ Save 17¢</td></tr> <tr><td>Country Fresh - 16 oz. carton Cottage Cheese</td><td style="text-align: right;">54¢ Save 27¢</td></tr> <tr><td>3 lb. bag Onion - Yellow</td><td style="text-align: right;">44¢ Save 25¢</td></tr> </table> <p style="text-align: center;">Limit 1 please with \$5.00 Food Purchase.</p>	Ajax Cleanser - 14 oz. Special Label	9¢ Save 18¢	Spartan Aluminum Foil - 25' roll	22¢ Save 17¢	Country Fresh - 16 oz. carton Cottage Cheese	54¢ Save 27¢	3 lb. bag Onion - Yellow	44¢ Save 25¢
Head Lettuce - 24 size	33¢ ea.														
Fresh Avocados - 24 size	39¢ ea.														
Fresh Pineapple 10 ct. size	77¢														
Ajax Cleanser - 14 oz. Special Label	9¢ Save 18¢														
Spartan Aluminum Foil - 25' roll	22¢ Save 17¢														
Country Fresh - 16 oz. carton Cottage Cheese	54¢ Save 27¢														
3 lb. bag Onion - Yellow	44¢ Save 25¢														
<h3>General Merchandise</h3> <table style="width: 100%;"> <tr><td>Festival Plastic Ware</td><td style="text-align: right;">Your choice</td></tr> <tr><td>Trash can</td><td style="text-align: right;">\$3.77</td></tr> <tr><td>Lift Top Wasket Bin</td><td></td></tr> <tr><td>Round Wicker Wastebasket</td><td></td></tr> <tr><td>Floral Laundry Basket</td><td></td></tr> </table>	Festival Plastic Ware	Your choice	Trash can	\$3.77	Lift Top Wasket Bin		Round Wicker Wastebasket		Floral Laundry Basket		<h3>Bakery</h3> <table style="width: 100%;"> <tr><td>Spartan Buns - 8 pk. Hamburg or Hot Dog</td><td style="text-align: right;">32¢</td></tr> <tr><td>Schafer's Hillbilly Bread 1 1/2 lb. loaf</td><td style="text-align: right;">59¢</td></tr> </table> <p style="text-align: center;">Both Goodrich's & Larry's have Package Liquor & full selection of your Favorite Beer & Wine</p>	Spartan Buns - 8 pk. Hamburg or Hot Dog	32¢	Schafer's Hillbilly Bread 1 1/2 lb. loaf	59¢
Festival Plastic Ware	Your choice														
Trash can	\$3.77														
Lift Top Wasket Bin															
Round Wicker Wastebasket															
Floral Laundry Basket															
Spartan Buns - 8 pk. Hamburg or Hot Dog	32¢														
Schafer's Hillbilly Bread 1 1/2 lb. loaf	59¢														
<h3>Grocery</h3> <table style="width: 100%;"> <tr><td>Kleenex Boutique Print Facial Tissue</td><td style="text-align: right;">44¢</td></tr> <tr><td>Dole Pineapple - Sliced-chunk In Natural Juice or crushed</td><td style="text-align: right;">49¢ ea.</td></tr> <tr><td>Fritos Brand Corn Chips - 12 oz. Regular or King Size Bag</td><td style="text-align: right;">69¢</td></tr> <tr><td>Ziploc Bags - Gallon size</td><td style="text-align: right;">69¢ ea.</td></tr> <tr><td>Sunshine Hydrox Cookies - 19 oz. pkg.</td><td style="text-align: right;">99¢</td></tr> </table>	Kleenex Boutique Print Facial Tissue	44¢	Dole Pineapple - Sliced-chunk In Natural Juice or crushed	49¢ ea.	Fritos Brand Corn Chips - 12 oz. Regular or King Size Bag	69¢	Ziploc Bags - Gallon size	69¢ ea.	Sunshine Hydrox Cookies - 19 oz. pkg.	99¢	<h3>10% Off Meat Sale</h3> <p>You - Mrs. Customer - will receive 10% off Regular Price on all Meat Purchases.</p>				
Kleenex Boutique Print Facial Tissue	44¢														
Dole Pineapple - Sliced-chunk In Natural Juice or crushed	49¢ ea.														
Fritos Brand Corn Chips - 12 oz. Regular or King Size Bag	69¢														
Ziploc Bags - Gallon size	69¢ ea.														
Sunshine Hydrox Cookies - 19 oz. pkg.	99¢														
<h3>Frozen & Dairy</h3> <table style="width: 100%;"> <tr><td>Heatherwood Round Natural Ice Cream 1/2 Gallon</td><td style="text-align: right;">1.44</td></tr> <tr><td>Butter Pecan Only</td><td style="text-align: right;">1.64</td></tr> <tr><td>Country Fresh 1/2% Low Fat Chocolate Milk 1/2 Gallon</td><td style="text-align: right;">77¢</td></tr> </table>		Heatherwood Round Natural Ice Cream 1/2 Gallon	1.44	Butter Pecan Only	1.64	Country Fresh 1/2% Low Fat Chocolate Milk 1/2 Gallon	77¢								
Heatherwood Round Natural Ice Cream 1/2 Gallon	1.44														
Butter Pecan Only	1.64														
Country Fresh 1/2% Low Fat Chocolate Milk 1/2 Gallon	77¢														

Shop 'Rite

LARRY'S

On east side of MSU at 1109 East Grand River.
Open Mon.-Thur. 9 am-10 pm
Fri. & Sat. 9 am-10 pm

Meat

10% OFF All Meat Dept.

Items Such as Beef - Pork - Poultry - Lunch Meats - Bacon - Hot Dogs - And all other Meat Items with a Meat Ticket on Product.

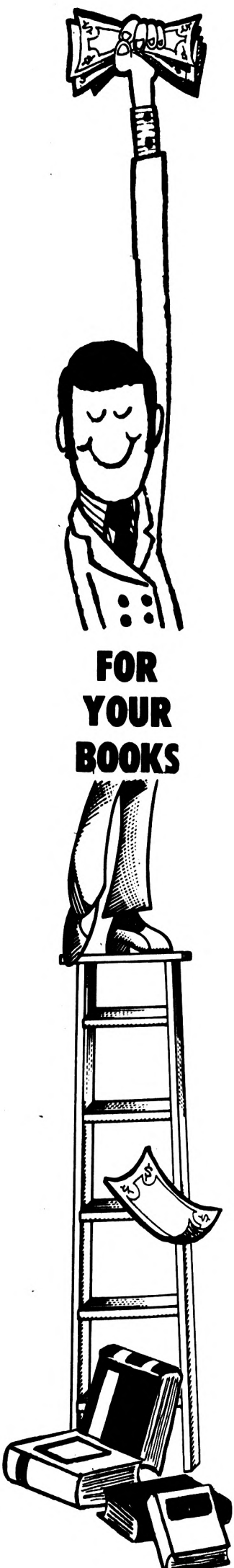
Excluded are Canned Meat Grocery Items, All Wholesale & Freezer Beef.

Shop 'Rite

GOODRICH'S

on west side of MSU at 910 Trowbridge Rd.
Open Monday - Thursday 9 am-9 pm
9 am-10 pm Friday & Saturday
11 am-5 pm Sunday
351-5760

TOP CASH



FOR YOUR BOOKS

WE'RE BUYING YOUR BOOKS BACK TODAY AND EVERYDAY

MONDAY THROUGH SATURDAY, FROM 8:30 to 5:30.

GET THAT EXTRA CASH FOR YOUR SPRING BREAK

SBS

Across from Olin at
421 E. GRAND RIVER 351-42

Former Indian P...
courthouse Mond...
refused to te...
Mrs. Gandh...
ary over the we...
resume leaderhi...

Par

By JIM A...
WASHINGTON (AP...
innocent Mon...
of trying to...
for the Sou...

millionaire ric...
ES District Court h...
Department ha...
Park immunity...
for his testimo...
other defendan...
akesperson for...
said the arraignm...
a legal process req...
and in no way af...
drop the charges.

The 36 counts aga...
arges that he bribed f...
Hanna, D.Calif., co...
sencia and Congre...
ment, made illeg...
essmen as a fore...
sided in mail fraud...
Park was released o...
Hanna goes on

Supre...
ederco

By RICHARD...
WASHINGTON (AP...
denying an appe...
in effect Monday...
ment does not ha...
of court-ordered...
daily desegregated...
The justices rejecte...
by Kentucky Gov...
ing permission to...
ing for busing in...
hundreds of school...
tion carrying out...
The court's action...
hope other state...
acts may have had...
ap.

acial desegregation...
for schools in Louis...
Jefferson County...
necessary the daily bus...
students.

The drain on state...
real and devastatin...

The governor had...
of three feder...
funding of busing...
liberal judge in Louis...
cials court already...
is urging the cour...
ucky's argument, t...
son argued that the...
under no obligati...
regation costs.

Indeed, states may w...

Two t...

Two of the five MSU...
monthly meeting staye...
Patricia Carrigan-Str...
were among the tr...
lay over the protesta...
to cut off the sessi...
commitments at noon.

Carrigan-Strickland...
ach, they would hav...

Servens said he was...
ees who complained...
usually do not show